

BS ISO 3560:2013



BSI Standards Publication

Road vehicles — Frontal fixed barrier or pole impact test procedure

bsi.

...making excellence a habit.™

National foreword

This British Standard is the UK implementation of ISO 3560:2013.

The UK participation in its preparation was entrusted to Technical Committee AUE/15, Safety related to vehicles.

A list of organizations represented on this committee can be obtained on request to its secretary.

This publication does not purport to include all the necessary provisions of a contract. Users are responsible for its correct application.

© The British Standards Institution 2013. Published by BSI Standards Limited 2013

ISBN 978 0 580 70152 8

ICS 43.020

Compliance with a British Standard cannot confer immunity from legal obligations.

This British Standard was published under the authority of the Standards Policy and Strategy Committee on 31 July 2013.

Amendments issued since publication

| Date | Text affected |
|------|---------------|
|------|---------------|

INTERNATIONAL
STANDARD

ISO
3560

Third edition
2013-06-15

**Road vehicles — Frontal fixed barrier
or pole impact test procedure**

*Véhicules routiers — Procédure d'essai de choc frontal contre barrière
fixe ou poteau*



Reference number
ISO 3560:2013(E)

© ISO 2013



COPYRIGHT PROTECTED DOCUMENT

© ISO 2013

All rights reserved. Unless otherwise specified, no part of this publication may be reproduced or utilized otherwise in any form or by any means, electronic or mechanical, including photocopying, or posting on the internet or an intranet, without prior written permission. Permission can be requested from either ISO at the address below or ISO's member body in the country of the requester.

ISO copyright office
Case postale 56 • CH-1211 Geneva 20
Tel. + 41 22 749 01 11
Fax + 41 22 749 09 47
E-mail copyright@iso.org
Web www.iso.org

Published in Switzerland

Contents

Page

| | |
|---|-----------|
| Foreword | iv |
| 1 Scope | 1 |
| 2 Normative references | 1 |
| 3 Terms and definitions | 1 |
| 4 Impact test set-up | 4 |
| 4.1 Test site..... | 4 |
| 4.2 Barrier..... | 4 |
| 4.3 Pole..... | 6 |
| 4.4 Test conditions..... | 6 |
| 5 Test vehicle | 7 |
| 5.1 General state and equipment..... | 7 |
| 5.2 Mass of the test vehicle..... | 7 |
| 5.3 Passenger compartment adjustments..... | 8 |
| 6 Test dummy | 9 |
| 6.1 Type..... | 9 |
| 6.2 Clothing and shoes..... | 10 |
| 6.3 Temperature..... | 10 |
| 7 Test dummy installation | 10 |
| 7.1 General..... | 10 |
| 7.2 Head..... | 10 |
| 7.3 Torso..... | 10 |
| 7.4 H-point of test dummy..... | 11 |
| 7.5 Pelvic angle..... | 11 |
| 7.6 Thighs and legs..... | 11 |
| 7.7 Arms..... | 11 |
| 7.8 Hands..... | 12 |
| 7.9 Feet..... | 12 |
| 8 Impact response measurements | 12 |
| 9 Instrumentation | 13 |
| Bibliography | 14 |

Foreword

ISO (the International Organization for Standardization) is a worldwide federation of national standards bodies (ISO member bodies). The work of preparing International Standards is normally carried out through ISO technical committees. Each member body interested in a subject for which a technical committee has been established has the right to be represented on that committee. International organizations, governmental and non-governmental, in liaison with ISO, also take part in the work. ISO collaborates closely with the International Electrotechnical Commission (IEC) on all matters of electrotechnical standardization.

International Standards are drafted in accordance with the rules given in the ISO/IEC Directives, Part 2.

The main task of technical committees is to prepare International Standards. Draft International Standards adopted by the technical committees are circulated to the member bodies for voting. Publication as an International Standard requires approval by at least 75 % of the member bodies casting a vote.

Attention is drawn to the possibility that some of the elements of this document may be the subject of patent rights. ISO shall not be held responsible for identifying any or all such patent rights.

ISO 3560 was prepared by Technical Committee ISO/TC 22, *Road vehicles*, Subcommittee SC 10, *Impact test procedures*.

This third edition cancels and replaces the second edition (3560:2001), which has been technically revised.

Road vehicles — Frontal fixed barrier or pole impact test procedure

1 Scope

This International Standard specifies a general frontal test procedure for impact on fixed barrier or pole. There are several applicable test configurations, some with specific test procedures. This International Standard describes general testing requirements for conducting accurate and uniform frontal testing.

2 Normative references

The following documents, in whole or in part, are normatively referenced in this document and are indispensable for its application. For dated references, only the edition cited applies. For undated references, the latest edition of the referenced document (including any amendments) applies.

ISO 612, *Road vehicles — Dimensions of motor vehicles and towed vehicles — Terms and definitions*

ISO 1176:1990, *Road vehicles — Masses — Vocabulary and codes*

ISO 3784, *Road vehicles — Measurement of impact velocity in collision tests*

ISO 6487, *Road vehicles — Measurement techniques in impact tests — Instrumentation*

ISO 6549¹⁾, *Road vehicles — Procedure for H- and R-point determination*

FMVSS 208:1997, *Actions to Reduce the Adverse Effects of Air Bags*

3 Terms and definitions

For the purposes of this document, the terms and definitions given in ISO 612 and the following apply.

3.1

impact angle

angle between the longitudinal median plane (of the vehicle) and a vertical plane perpendicular to the contact plane of the barrier face

Note 1 to entry: The longitudinal median plane (of the vehicle) is also called the longitudinal plane of symmetry or zero Y plane (see ISO 4130).

3.2

vehicle width

W

distance between two planes parallel to the longitudinal median plane (of the vehicle) and touching the vehicle on either side of the longitudinal median plane

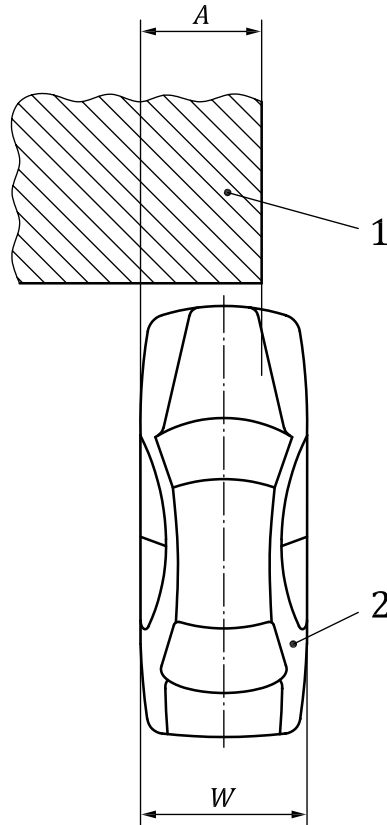
Note 1 to entry: All parts of the vehicle, including any lateral projections of fixed parts (wheels, hubs, door-handles, bumpers, etc.) are contained between these two planes, except for the rear-view mirrors, side marker lamps, tyre pressure indicators, direction indicator lamps, position lights, customs seals, flexible mud-guards, door-edge guards, hinged side windows in the open position, fuel filler flaps in the open position, retractable steps, snow chains and the deflected part of the tyre walls immediately above the point of contact with the ground.

1) Withdrawn.

**3.3
overlap**

percentage of the vehicle width covered by the barrier face (see [Figure 1](#))

Note 1 to entry: The overlap may be left or right. [Figure 1](#) shows a left side overlap.



Key

1 Barrier

2 Vehicle

$$\text{Overlap} = \frac{A}{W} \times 100$$

Figure 1 — Overlap

**3.4
offset**

B
perpendicular distance between the longitudinal median plane (of the vehicle) and the centreline of the pole

Note 1 to entry: The offset may be left or right. [Figure 2](#) shows a left side offset.

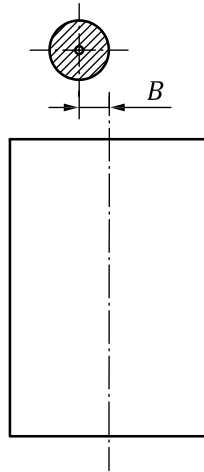


Figure 2 — Offset

3.5

full frontal, 0° angle impact, 100 % overlap

type of impact in which the barrier face is wider than the impacting vehicle and the direction of travel of the vehicle is perpendicular to the barrier face

3.6

frontal, angled impact

type of impact in which the barrier face is wider than the projected width of the impacting vehicle (see [Figure 3](#)) and the angle of impact is other than zero

Note 1 to entry: The barrier face can be angled so that the initial contact is to the right or left of the longitudinal median plane (of the vehicle).

3.7

offset frontal impact

type of impact in which the vehicle impacts a barrier face with an overlap of less than 100 %

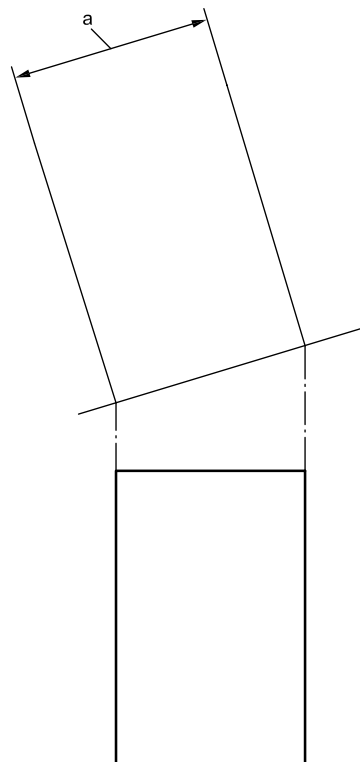
Note 1 to entry: Any angle of impact can be used.

3.8

pole impact

type of impact in which the vehicle impacts a circular pole considerably narrower than the width of the vehicle

Note 1 to entry: The pole can be offset to either side of the longitudinal median plane (of the vehicle).



a Projected width of vehicle.

Figure 3 — Frontal, angled impact

4 Impact test set-up

4.1 Test site

The test area shall be large enough to accommodate the run-up track, barrier and technical installations necessary for the test.

The crash site surface shall be level and rigid for a length of at least 10 m in front of the impact object, at least along the tyre path, and ideally throughout the entire test pad – to account for a potential impact of the vehicle underside structure with the ground. There shall be no more than a 1 % slope measured over any 1 m length for at least the last 10 m.

4.2 Barrier

4.2.1 Fixed barrier

The barrier shall consist of a block made of a relevant material able to resist to impact. No cracks, breakage or plastic deformation should occur to the fixed barrier. The width shall be at least 3 m and the height at least 1,5 m.

The barrier face is secured to a mass not less than 70 000 kg. Its movement at impact shall be restricted to ± 2 mm. The barrier specifications given in [4.2.2](#) may be varied as necessary provided the barrier face is large enough to accommodate the frontal crash area of the test vehicle.

4.2.2 Barrier face

4.2.2.1 General

A variety of barrier faces may be used. Some are specified below.

4.2.2.2 Rigid flat barrier face

The barrier face shall be flat and vertical and shall be covered with fir plywood 18 mm to 26 mm thick.

4.2.2.3 Anti-slide device (ASD) on rigid flat barrier face

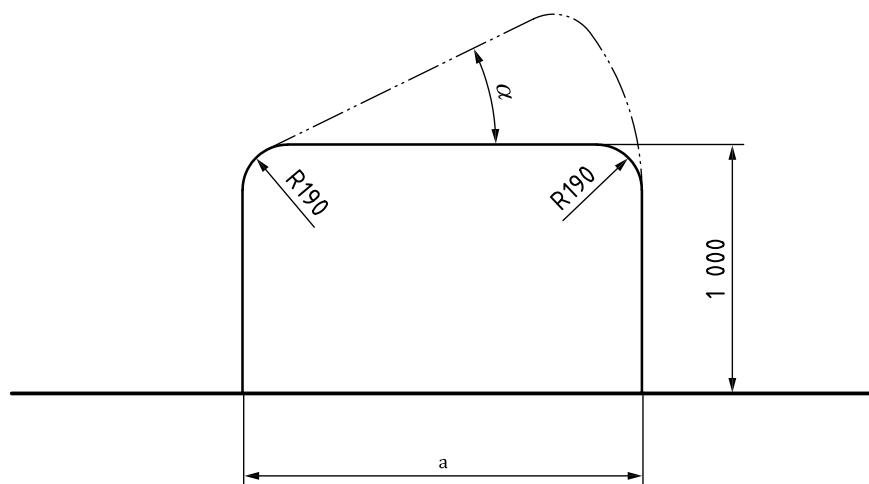
The ASD, which shall be 40 mm thick, 40 mm wide and at least 1 500 mm long, fabricated from steel and positioned to permit $20 \text{ mm} \pm 2 \text{ mm}$ projection in front of the plywood, shall be mounted vertically at a distance of 350 mm left and right of the theoretical (projected) point of impact of the longitudinal median plane (of the vehicle).

4.2.2.4 Deformable barrier face

The deformable barrier face shall be vertical and either flat or with a bumper simulation. It shall have sufficient height, depth and width to allow the desired test to be carried out.

4.2.2.5 Rigid offset barrier face

The offset barrier face shall have a sufficient width to allow the desired overlap, a height of at least 1 500 mm and a depth of at least 1 000 mm. The edge radius on both sides shall be $190 \text{ mm} \pm 2 \text{ mm}$. The face may be set at an angle to the barrier and may include an ASD (see [Figure 4](#)).



a As desired.

Figure 4 — Rigid offset barrier face

In the case of an offset deformable barrier face, the edges of this face shall be in line with the sides of the main offset barrier and fully supported.

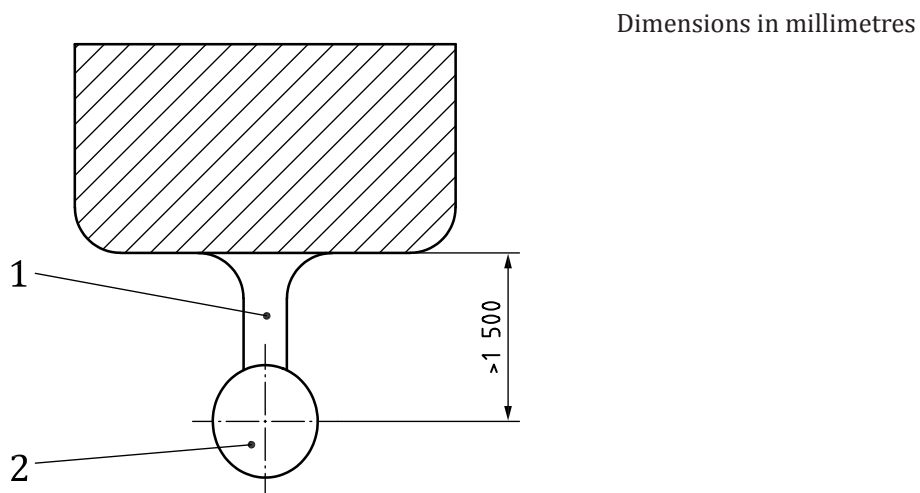
4.2.3 Ground clearance

The ground clearance shall be set according to the test type, and within a tolerance of $\pm 5 \text{ mm}$.

4.3 Pole

The pole, designed as a vertically-oriented, circular, rigid structure, beginning no more than 100 mm above the ground and extending above the roof of the impacting vehicle, should be 254 mm \pm 3 mm in diameter and set off from any vertical mounting surface (such as attachment to a fixed rigid barrier face) by at least 1 500 mm.

The pole support shall not interfere with the crashing vehicle: any secondary impact should be avoided before the rebound phase of the crash.



Key

- 1 Support
- 2 Pole

Figure 5 — Pole

4.4 Test conditions

4.4.1 Propulsion of the test vehicle

The test vehicle shall be propelled to a point no closer than 0,5 m from contact with the barrier face, where it shall be released to travel freely.

The attachment to the vehicle of any external propulsion or guidance system shall not affect the vehicle's structural characteristics.

4.4.2 Alignment of the test vehicle

The test vehicle shall impact the barrier so that its longitudinal axis is within $\pm 2^\circ$ of the intended angle of impact.

The optimal offset value is set within ± 20 mm.

NOTE The offset value should be kept within ± 30 mm for the test to be considered acceptable. However if the offset value is over ± 20 mm, some care should be taken in the interpretation of the results.

4.4.3 Velocity of the test vehicle

The velocity measurement shall be determined within the last 1,5 m of travel, but not less than 300mm prior to the impact, and in any case after the vehicle is released from the tow system.

The measurement shall be done as specified in ISO 3784.

The velocity at the time of impact shall be that specified in the applicable test requirements. The impact velocity tolerance shall be within +/- 0,5 km/h of the desired velocity.

5 Test vehicle

5.1 General state and equipment

The test vehicle shall be representative of the series production, shall include all the equipment normally fitted and shall be in normal running order. Some components may be replaced by equivalent masses where this substitution clearly has no noticeable effect on the measured results.

5.2 Mass of the test vehicle

$$m_t = m_k + m_l + m_d$$

where

m_k is the complete vehicle kerb mass or unloaded vehicle weight (ISO-M06), as defined in ISO 1176:1990, 4.6, in kilograms ;

m_l is the rated cargo and luggage mass in kilograms

The cargo mass is the maximum admissible weight minus the maximum standard occupant mass, or 136 kg, whichever is less (see [5.2.1](#)).

m_d is the mass of the selected test dummy as defined in the user manual of the dummy.

The vehicle shall be ballasted to achieve the test mass to within ± 10 kg. The ballast shall be located and secured to the vehicle so that it does not alter the structural characteristics of the parts of the vehicle expected to deform during the test.

Given that the mass distribution in the vehicle can influence the vehicle response, it is recommended that the wheel mass be documented.

The instrumentation and cameras required for testing should not change the mass distribution between the axles by more than 20 kg.

It is permissible to substitute for the fuel in the fuel tank a preferably non-flammable liquid having a density of from 0,7 kg/dm³ to 1 kg/dm³.

At the time of impact, the vehicle shall be at the normal height and attitude defined by the manufacturer.

5.2.1 Methods for calculating cargo mass (m_l) depending on the information available

The value (m_l) of the cargo mass shall be between 0 and 136 kg.

Method A

$$m_1 = \max\{\min[m_p - (68 \times C_{DS}); 136 \text{ kg}], 0\}$$

where

m_p is the vehicle capacity weight or maximum design pay mass (ISO-M09) as defined in ISO 1176:1990, 4.9, in kilograms;

C_{DS} is the designated seating capacity of test vehicle.

Method B: Published cargo mass

Cargo mass (_____ kg)

Method C: Published vehicle capacity weight (combined weight of cargo and occupants or maximum design pay mass)

A = Vehicle capacity weight = _____ kg

B = () $C_{DS} \times 68$ kg: _____ kg

A (___ kg) - B (_____ kg) = **Cargo mass** (_____ kg)

Method D: Published GVWR

A = GVWR = _____ kg

B = () $C_{DS} \times 68$ kg = _____ kg

C = Unloaded vehicle mass (kerb weight) = _____ kg

A (_____ kg) - B (_____ kg) - C (_____ kg) = **Cargo mass** (_____ kg)

5.3 Passenger compartment adjustments

5.3.1 Steering wheel position

The steering wheel, if adjustable, shall either be placed in the normal position as indicated by the manufacturer or midway between the limits of its range or ranges of adjustment. At the end of propelled travel, the steering wheel shall be left free, with its spoke or spokes in the position which, according to the manufacturer, corresponds to straight-ahead travel of the vehicle.

5.3.2 Glazing

The movable glazing of the vehicle shall be in the closed position. However, for test measurement purposes and in agreement with the manufacturer, it may be lowered, provided that the position of the operating handle corresponds to the closed position.

5.3.3 Gear change lever

The gear-change lever shall be in the neutral position.

5.3.4 Pedals

The pedals shall be in their normal position of rest.

5.3.5 Doors

The doors shall be closed but not locked.

5.3.6 Opening roof

If an opening or removable roof is fitted, it shall be in place and in the closed position. For test measurement purposes and in agreement with the manufacturer, it may be open.

5.3.7 Sun visor

The sun visors shall be in the stowed position.

5.3.8 Rear-view mirror

The interior rear-view mirror shall be in a normal position of use.

5.3.9 Armrests

Armrests at the front and rear, if movable, shall be in the position of use, unless this is prevented by the position of the test dummy or dummies in the vehicles.

5.3.10 Head restraints

If the head restraint position is not stated in the applicable test requirements, or by the manufacturer, it is to be set in its uppermost position.

5.3.11 Seats

5.3.11.1 Position of front seats

When using a midsized adult male dummy, seats adjustable longitudinally shall be placed so that the H-point is in the middle position of travel or in the nearest locking position rearward, and at the height position defined by the manufacturer (if independently adjustable for height).

In the case of a bench seat, the reference shall be to the H-point of the driver's position.

5.3.11.2 Position of front seat-backs

If adjustable, the seat-backs shall be adjusted so that the resulting inclination is as close as possible to that recommended by the manufacturer for normal use or, in the absence of any particular recommendation by the manufacturer, 25° towards the rear from the vertical.

5.3.11.3 Rear seats

If adjustable, the rear seats or rear bench seats shall be placed in the manufacturer design position, or if not specified, in the rearmost position.

6 Test dummy

6.1 Type

The dummies used shall be Hybrid III 50th percentile dummies.^[5]

6.2 Clothing and shoes

The instrumented dummy shall be clothed in formfitting cotton stretch garments with short sleeves and above the knee length trousers as specified in FMVSS 208:1997, drawing 78051-292 and 293, or their equivalent.

A size 11XW shoe, as specified in FMVSS 208:1997, 8.1.8.2 or equivalent, shall be placed on each foot of the test dummy.

6.3 Temperature

The anthropomorphic test device (ATD) temperature shall be kept within the limits indicated in the appropriate ATD procedure, and measured according to ISO 6487.

7 Test dummy installation

7.1 General

Locate the H-point in the vehicle in accordance with ISO 6549. Using the package drawing, correlate the H-point to the seating position used for the test. Locate the lateral centreline of the seating position.

Mark the test dummy for its midsagittal plane, the centre of gravity of the head and the H-point. A hip pivot point will be marked on the dummy, or another mark will be present that approximately coincides with the ISO 6549 manikin H-point. This point should be established and marked clearly on the test dummy. Use instrumentation to measure the test dummy's pelvic angle.

The dummy's upper torso or head may be lightly taped to the seat back so that it does not move relative to the seat during final instrumentation checks, etc. The tape may be left in place for the test providing it will break when subjected to a load not exceeding 50 N.

If the positioned dummy has been placed in the seat for longer than 3 h before a test, check the head centre of gravity vertical position. If the head centre of gravity has changed by more than 6 mm, reposition the dummy.

7.2 Head

The transverse instrumentation platform of the head shall be horizontal to within $\pm 2,5^\circ$. To level the head in vehicles having upright seats with non-adjustable seat backs, adjust the position of the H-point within its limits (see 7.4), making level the instrumentation platform. If the instrumentation platform is still not level, adjust the pelvic angle within its limits (see 7.5). Then, if the instrumentation platform is still not level, adjust the neck bracket of the test dummy by the minimum amount necessary to bring the instrumentation platform within its limits.

7.3 Torso

7.3.1 In driver's position

7.3.1.1 Bench seat

The upper torso of the test dummy rests against the seat back. The midsagittal plane of the test dummy is vertical and parallel to the vehicle's longitudinal centreline, and passes through the centre of the steering wheel rim. If the seat has a contour, the test dummy should be centred in the contour as determined using the ISO 6549 manikin procedure.

7.3.1.2 Bucket or contoured seat

The upper torso of the test dummy rests against the seat back. The midsagittal plane of the test dummy is vertical and coincides with the longitudinal centreline of the bucket or contoured seat.

7.3.2 In front outboard passenger position

7.3.2.1 Bench seat

The upper torso of the test dummy rests against the seat back. The midsagittal plane of the test dummy is vertical and parallel to the vehicle's longitudinal centreline, and the same distance from the vehicle's longitudinal centreline as would be the midsagittal plane of a test dummy positioned in the driver position under [7.3.1](#). If the seat has a contour, the test dummy should be centred in the contour as determined using the ISO 6549 manikin procedure.

7.3.2.2 Bucket or contoured seat

The upper torso of the test dummy rests against the seat back. The midsagittal plane of the test dummy is vertical and parallel to the vehicle's longitudinal centreline, and coincides with the longitudinal centreline of the bucket or contoured seat.

7.4 H-point of test dummy

The H-point of the test dummy is within 13 mm in the vertical dimension and 13 mm in the horizontal dimension with a point 6 mm below the position of the H-point as determined using the equipment and procedure specified in ISO 6549, except that the length of the lower leg and thigh segments of the H-point machine are adjusted to 418 mm and 408 mm, respectively.

7.5 Pelvic angle

Using the pelvic angle gauge (conforming to GM drawing 78051-532, CFR Part 572 of FMVSS 208:1997) inserted into the H-point gauging hole of the dummy, the angle measured from the horizontal on the 76,2 mm flat surface of the gauge shall be $22,5^\circ \pm 2,5^\circ$.

7.6 Thighs and legs

The thighs of the test dummy rest against the seat cushion to the extent permitted by placement of the feet. The initial distance between the outboard knee clevis flange surfaces shall be $270 \text{ mm} \pm 10 \text{ mm}$. To the extent practicable, the left leg of the test dummy in the driver's position and both legs of the test dummy in the outboard passenger position are in vertical longitudinal planes. To the extent practicable, the right leg of the driver dummy shall be in a vertical plane. Final adjustment to accommodate placement of feet in accordance with [7.9](#) for various passenger compartment configurations is permitted.

7.7 Arms

7.7.1 In driver's position

The upper arms shall be adjacent to the torso with the centrelines as close to the vertical plane as possible.

7.7.2 In front outboard passenger position

The upper arms shall be in contact with the seat back and the sides of the torso.

7.8 Hands

7.8.1 In driver's position

The palms shall be in contact with the outer part of the steering wheel rim at the rim's horizontal centreline. The thumbs shall be over the steering wheel rim and shall be lightly taped to the rim, so that if the hand is pushed upward by a force of not less than 9 N and not greater than 22 N, the tape will release the hand from the steering wheel rim.

7.8.2 In front outboard passenger position

The palms shall be in contact with the outside of the thighs. The little finger shall be in contact with the seat cushion.

7.9 Feet

7.9.1 In driver's position

The right foot of the test dummy rests on the undepressed accelerator with the heel resting as far forward as possible on the floorpan. The left foot is set perpendicular to the leg and placed as far forward as possible such that the heel rests on the floorpan.

7.9.2 In front outboard passenger position

The feet of the test dummy are placed on the vehicle's toe board with the heels resting on the floorpan as close as possible to the intersection of the toe board and floorpan. If the feet cannot be placed flat on the toe board, they are set perpendicular to the legs and placed as far forward as possible such that the heels rest on the floorpan.

8 Impact response measurements

The dummy measurements shall be according to [Table 1](#).

NOTE Mandatory measurements are those needed to calculate a criterion or associated to an injury mechanism. Other measurements are optional and can be used to analyse the dummy dynamics and kinematics.

Table 1 — Dummy measurements

| Segment | Measures | Mandatory measurements ^a | Criteria | Optional measurements |
|----------|-----------------------------|-------------------------------------|---------------------------------|------------------------------------|
| Head | CG linear acceleration | a_x, a_y, a_z | Resultant acceleration HIC15 | |
| | Rotational acceleration | | | $\alpha_x, \alpha_y, \alpha_z$ |
| | Rotational velocity | | | $\omega_x, \omega_y, \omega_z$ |
| Neck | OC joint (upper neck) loads | F_x, F_z, M_y | FT, Me, NTE | F_y M_x, M_z |
| | C7/T1 (lower neck) loads | | | F_x, F_y, F_z M_x, M_y, M_z |
| Clavicle | Biaxial Loads | | | F_x, F_z |
| Humerus | Four-Axis Loads | | | F_x, F_y, F_z M_x, M_y, M_z |

^a Mandatory measurements are those needed to calculate a criterion associated to injury risk curves as proposed in ISO/TR 7861.

Table 1 (continued)

| Segment | Measures | Mandatory measurements ^a | Criteria | Optional measurements |
|---------------------|--------------------------|-------------------------------------|--|------------------------------------|
| Thorax | Linear accelerations | | | a_x, a_y, a_z |
| | Deflection | D_x | Deflection Deflection rate VC | |
| Lumbar spine | Lower lumbar spine loads | | | F_x, F_y, F_z M_x, M_y, M_z |
| Pelvis | CG linear accelerations | | | a_x, a_y, a_z |
| | Submarining Load bolts | | | $3 * F_x$ |
| Femur | Loads | F_z | Max F_z | F_x, F_y M_x, M_y, M_z |
| Knee | Displacement | | | D_x |
| Lower leg | Knee clevis load | | | F_z |
| | Upper tibia loads | F_z M_x, M_y | Axial compressive load Bending moment | F_x |
| | Lower tibia loads | F_z M_x, M_y | Axial compressive load Bending moment | F_x |
| Ankle | Loads | | | F_x, F_y, F_z M_x, M_y |
| Foot | Toe loads | | | F_z |
| | Accelerations | | | a_x, a_y |

^a Mandatory measurements are those needed to calculate a criterion associated to injury risk curves as proposed in ISO/TR 7861.

9 Instrumentation

All measurements should be recorded and filtered according to ISO 6487 (or SAE J 211-1 if not specified in ISO 6487). These measurements should be continuous functions of time.

Bibliography

- [1] ISO 4130, *Road vehicles — Three-dimensional reference system and fiducial marks — Definitions*
- [2] ISO 6813, *Road vehicles — Collision classification — Terminology*
- [3] SAE J211-1, *Instrumentation for impact test — Part 1 : Electronic instrumentation*
- [4] ISO/TR 7861, *Road vehicles — Injury risk curves for evaluation of occupant protection in frontal impact*
- [5] 49 CFR, Part 572 E, *Anthropomorphic test devices — Hybrid III test dummy, subpart E*

British Standards Institution (BSI)

BSI is the national body responsible for preparing British Standards and other standards-related publications, information and services.

BSI is incorporated by Royal Charter. British Standards and other standardization products are published by BSI Standards Limited.

About us

We bring together business, industry, government, consumers, innovators and others to shape their combined experience and expertise into standards-based solutions.

The knowledge embodied in our standards has been carefully assembled in a dependable format and refined through our open consultation process. Organizations of all sizes and across all sectors choose standards to help them achieve their goals.

Information on standards

We can provide you with the knowledge that your organization needs to succeed. Find out more about British Standards by visiting our website at bsigroup.com/standards or contacting our Customer Services team or Knowledge Centre.

Buying standards

You can buy and download PDF versions of BSI publications, including British and adopted European and international standards, through our website at bsigroup.com/shop, where hard copies can also be purchased.

If you need international and foreign standards from other Standards Development Organizations, hard copies can be ordered from our Customer Services team.

Subscriptions

Our range of subscription services are designed to make using standards easier for you. For further information on our subscription products go to bsigroup.com/subscriptions.

With **British Standards Online (BSOL)** you'll have instant access to over 55,000 British and adopted European and international standards from your desktop. It's available 24/7 and is refreshed daily so you'll always be up to date.

You can keep in touch with standards developments and receive substantial discounts on the purchase price of standards, both in single copy and subscription format, by becoming a **BSI Subscribing Member**.

PLUS is an updating service exclusive to BSI Subscribing Members. You will automatically receive the latest hard copy of your standards when they're revised or replaced.

To find out more about becoming a BSI Subscribing Member and the benefits of membership, please visit bsigroup.com/shop.

With a **Multi-User Network Licence (MUNL)** you are able to host standards publications on your intranet. Licences can cover as few or as many users as you wish. With updates supplied as soon as they're available, you can be sure your documentation is current. For further information, email bsmusales@bsigroup.com.

BSI Group Headquarters

389 Chiswick High Road London W4 4AL UK

Revisions

Our British Standards and other publications are updated by amendment or revision.

We continually improve the quality of our products and services to benefit your business. If you find an inaccuracy or ambiguity within a British Standard or other BSI publication please inform the Knowledge Centre.

Copyright

All the data, software and documentation set out in all British Standards and other BSI publications are the property of and copyrighted by BSI, or some person or entity that owns copyright in the information used (such as the international standardization bodies) and has formally licensed such information to BSI for commercial publication and use. Except as permitted under the Copyright, Designs and Patents Act 1988 no extract may be reproduced, stored in a retrieval system or transmitted in any form or by any means – electronic, photocopying, recording or otherwise – without prior written permission from BSI. Details and advice can be obtained from the Copyright & Licensing Department.

Useful Contacts:

Customer Services

Tel: +44 845 086 9001

Email (orders): orders@bsigroup.com

Email (enquiries): cservices@bsigroup.com

Subscriptions

Tel: +44 845 086 9001

Email: subscriptions@bsigroup.com

Knowledge Centre

Tel: +44 20 8996 7004

Email: knowledgecentre@bsigroup.com

Copyright & Licensing

Tel: +44 20 8996 7070

Email: copyright@bsigroup.com



...making excellence a habit.™