



BSI Standards Publication

Plain bearings — Wrapped bushes

Part 2: Test data for outside and inside diameters

National foreword

This British Standard is the UK implementation of ISO 3547-2:2017. It supersedes BS ISO 3547-2:2006 which is withdrawn.

The UK participation in its preparation was entrusted to Technical Committee MCE/12, Plain bearings.

A list of organizations represented on this committee can be obtained on request to its secretary.

This publication does not purport to include all the necessary provisions of a contract. Users are responsible for its correct application.

© The British Standards Institution 2017.
Published by BSI Standards Limited 2017

ISBN 978 0 580 94009 5

ICS 21.100.10

Compliance with a British Standard cannot confer immunity from legal obligations.

This British Standard was published under the authority of the Standards Policy and Strategy Committee on 31 March 2017.

Amendments/corrigenda issued since publication

Date	Text affected
------	---------------

INTERNATIONAL
STANDARD

ISO
3547-2

Third edition
2017-02

Plain bearings — Wrapped bushes —

**Part 2:
Test data for outside and inside
diameters**

Paliers lisses — Bagues roulées —

Partie 2: Données d'essai pour le diamètre extérieur et le diamètre intérieur



Reference number
ISO 3547-2:2017(E)

© ISO 2017



COPYRIGHT PROTECTED DOCUMENT

© ISO 2017, Published in Switzerland

All rights reserved. Unless otherwise specified, no part of this publication may be reproduced or utilized otherwise in any form or by any means, electronic or mechanical, including photocopying, or posting on the internet or an intranet, without prior written permission. Permission can be requested from either ISO at the address below or ISO's member body in the country of the requester.

ISO copyright office
Ch. de Blandonnet 8 • CP 401
CH-1214 Vernier, Geneva, Switzerland
Tel. +41 22 749 01 11
Fax +41 22 749 09 47
copyright@iso.org
www.iso.org

Contents

Page

Foreword	iv
1 Scope	1
2 Normative references	1
3 Terms and definitions	1
4 Symbols and units	2
5 Presentation of data on drawing	2
6 Tests	4
6.1 Test A	4
6.2 Test B	4
6.3 Test C	4
6.4 Test D	4
7 Test A	4
7.1 Description	4
7.2 Calculation basis	4
7.2.1 Elastic reduction, v , of outside diameter, D_o	4
7.2.2 Calculation of diameter of checking block, $d_{ch,1}$	5
7.2.3 Effective cross-sectional area, A_{cal}	5
7.2.4 Calculation of checking load, F_{ch}	6
7.2.5 Limits for Δz	7
7.3 Obtaining data — Example	7
7.4 Presentation of data on drawing — Example	8
8 Test B	8
8.1 Description	8
8.2 Obtaining data — Example	9
8.3 Presentation of data on drawing — Example	9
9 Test C	9
9.1 Description	9
9.2 Obtaining data — Example	10
9.3 Presentation of data on drawing — Example	10
10 Test D	11
10.1 Description	11
10.2 Obtaining data — Example	11
10.3 Presentation of data on drawing — Example	11
11 Designation of tests according to this document	12
Bibliography	13

Foreword

ISO (the International Organization for Standardization) is a worldwide federation of national standards bodies (ISO member bodies). The work of preparing International Standards is normally carried out through ISO technical committees. Each member body interested in a subject for which a technical committee has been established has the right to be represented on that committee. International organizations, governmental and non-governmental, in liaison with ISO, also take part in the work. ISO collaborates closely with the International Electrotechnical Commission (IEC) on all matters of electrotechnical standardization.

The procedures used to develop this document and those intended for its further maintenance are described in the ISO/IEC Directives, Part 1. In particular the different approval criteria needed for the different types of ISO documents should be noted. This document was drafted in accordance with the editorial rules of the ISO/IEC Directives, Part 2 (see www.iso.org/directives).

Attention is drawn to the possibility that some of the elements of this document may be the subject of patent rights. ISO shall not be held responsible for identifying any or all such patent rights. Details of any patent rights identified during the development of the document will be in the Introduction and/or on the ISO list of patent declarations received (see www.iso.org/patents).

Any trade name used in this document is information given for the convenience of users and does not constitute an endorsement.

For an explanation on the meaning of ISO specific terms and expressions related to conformity assessment, as well as information about ISO's adherence to the World Trade Organization (WTO) principles in the Technical Barriers to Trade (TBT) see the following URL: www.iso.org/iso/foreword.html.

This document was prepared by Technical Committee ISO/TC 123, *Plain bearings*, Subcommittee SC 3, *Dimensions, tolerances and construction details*.

This third edition cancels and replaces the second edition (ISO 3547-2:2006), which has been technically revised.

A list of all the parts in the ISO 3547 series can be found on the ISO website.

Plain bearings — Wrapped bushes —

Part 2: Test data for outside and inside diameters

1 Scope

This document specifies the test data for outside and inside diameters of wrapped bushes made of mono and multi-layer bearing material for plain bearing applications. It also specifies test designations.

Since the wall thickness of the bush is measured in the free condition, no special test data are required for this on the drawing (see ISO 3547-5 and ISO 3547-6).

NOTE Depending on the manufacturing method, the back of the bushes can show isolated light depressions and, similarly, bushes with lubrication holes, grooves and bore indentations can show distortion. It is therefore suggested to measure the wall thickness away from these areas.

2 Normative references

The following documents are referred to in the text in such a way that some or all of their content constitutes requirements of this document. For dated references, only the edition cited applies. For undated references, the latest edition of the referenced document (including any amendments) applies.

ISO 286-2, *Geometrical product specifications (GPS) — ISO code system for tolerances on linear sizes — Part 2: Tables of standard tolerance classes and limit deviations for holes and shafts*

ISO 3547-1:—¹⁾, *Plain bearings — Wrapped bushes — Part 1: Dimensions*

ISO 3547-4, *Plain bearings — Wrapped bushes — Part 4: Materials*

ISO 3547-5, *Plain bearings — Wrapped bushes — Part 5: Checking the outside diameter*

ISO 4378-1, *Plain bearings — Terms, definitions, classification and symbols — Part 1: Design, bearing materials and their properties*

ISO 4378-4, *Plain bearings — Terms, definitions, classification and symbols — Part 4: Basic symbols*

ISO 12301, *Plain bearings — Quality control techniques and inspection of geometrical and material quality characteristics*

ISO 13715, *Technical drawings — Edges of undefined shape — Vocabulary and indication*

3 Terms and definitions

For the purposes of this document, the terms and definitions given in ISO 4378-1 and ISO 4378-4 apply.

ISO and IEC maintain terminological databases for use in standardization at the following addresses:

- ISO Online browsing platform: available at <http://www.iso.org/obp>
- IEC Electropedia: available at <http://www.electropedia.org/>

1) Under preparation. Stage at the time of publication: ISO/DIS 3547-1:2016.

4 Symbols and units

See [Table 1](#).

Table 1 — Symbols and units

Symbol	Description	Unit
A_{cal}	Reduced area of cross section (calculated value) of the bush	mm ²
B	Width of the bush	mm
C_i	Inside chamfer	mm
C_o	Outside chamfer	mm
D_{fl}	Flange diameter	mm
D_H	Housing bore diameter	mm
D_i	Inside diameter of the bush	mm
$D_{i, ch}$	Inside diameter of the bush in the ring gauge	mm
D_o	Outside diameter of the bush	mm
F_{ch}	Checking load	mm
$d_{ch, 1}$	Diameter of the checking block or ring gauge	mm
$d_{ch, 2}$	Diameter of the setting plug or plug gauge	mm
r	Flange radius	mm
s_1	Thickness of the backing layer ^a	mm
s_2	Thickness of the bearing material layer ^a	mm
s_3	Wall thickness ^a	mm
s_{fl}	Flange thickness	mm
ΔD_o	Tolerance of D_o	mm
v	Elastic reduction of the outside diameter under checking load F_{ch}	mm
z	Distance apart of the halves of the checking block	mm
Δz	Indicator reading	mm
Δz_D	Circumference indicator reading for test D	mm

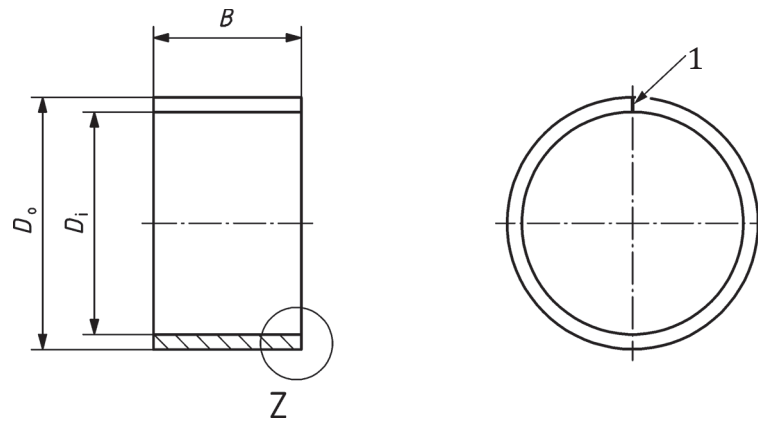
^a For bushes which are made of a single material, $s_1 = s_3$ or $s_2 = s_3$.

5 Presentation of data on drawing

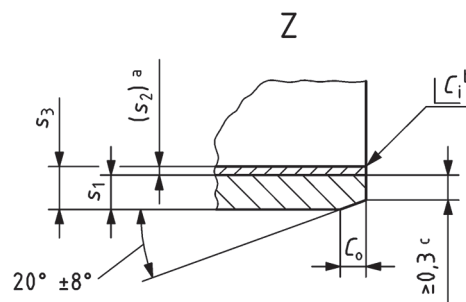
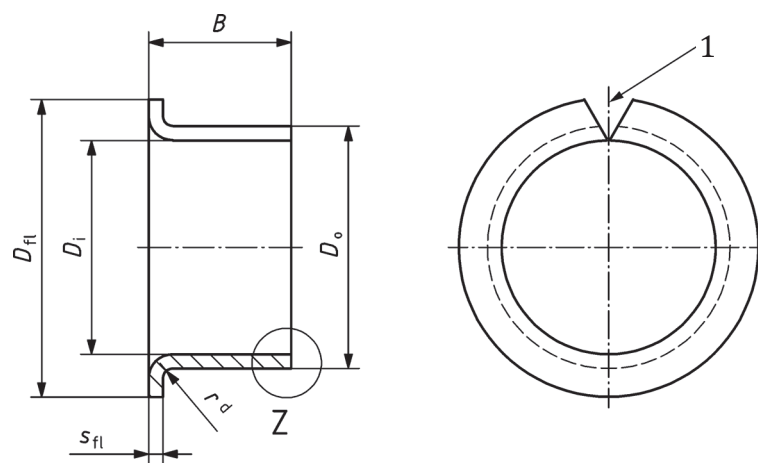
The drawing should show either

- the outside diameter, D_o , and the wall thickness, s_3 , or
- the outside diameter, D_o , and the inside diameter, D_i .

Wall thickness, s_3 , and inside diameter, D_i , shall not be specified together on the same drawing. See [Figure 1](#).



a) Type C cylindrical bush



b) Type F flanged bush

Key

- 1 butt joint
- a Thickness of the bearing material layer: only valid as a basis for calculation in accordance with 7.2.
- b C_i may be a chamfer or break edge, in accordance with ISO 13715.
- c 0,2 mm min. for nominal wall thickness 0,5 mm.
- d $r_{max} = s_3$

Figure 1 — Cylindrical and flanged bush taken from ISO 3547-1

6 Tests

6.1 Test A

Check the outside diameter, D_o , using a checking block in a test rig and setting plug, in accordance with [Clause 7](#).

6.2 Test B

Check the outside diameter, D_o , using two ring gauges, in accordance with [Clause 8](#).

6.3 Test C

Check the inside diameter, D_i , of a bush pressed into a ring gauge, in accordance with [Clause 9](#).

6.4 Test D

Check the outside diameter, D_o , using precision measuring tape, in accordance with [Clause 10](#).

7 Test A

7.1 Description

This test is applicable to D_o up to 180 mm.

The test rig consists of a base on which the two parts of the checking block are mounted (see ISO 3547-5).

A setting plug is inserted in the checking block and the two halves of the checking block are pressed towards one another using the given checking load, F_{ch} , and the indicator reading set.

The setting plug is then removed and replaced by the bush to be checked, and the checking load reapplied.

After the bush has been inserted, the distance, z , between the two halves of the checking block changes under checking load F_{ch} and the distance indicator reading, Δz , is recorded.

From this, D_o can be calculated.

Flanged bushes may be checked either before or after flange forming at the option of the manufacturer.

7.2 Calculation basis

7.2.1 Elastic reduction, v , of outside diameter, D_o

The elastic reduction, v , of the outside diameter, D_o , is the difference between D_o under zero load and the resultant diameter when the checking load, F_{ch} , is applied. Force F_{ch} shall be sufficient to ensure that the bush conforms properly to the surface of the test housing and that the results in the elastic reduction, v , of the outside diameter are in accordance with [Table 2](#).

Table 2 — Elastic reduction, v , of the outside diameter, D_o , under checking load, F_{ch}

Dimensions in millimetres

D_o nominal		v
	≤ 6	0,003
> 6	≤ 12	0,006
> 12	≤ 80	0,013
> 80	≤ 180	0,025

7.2.2 Calculation of diameter of checking block, $d_{ch,1}$

The diameter of the checking block can be calculated from the specified upper limit of the outside diameter, $D_{o,max}$, of the bush from [Formula \(1\)](#):

$$d_{ch,1} = D_{o,max} - v \quad (1)$$

7.2.3 Effective cross-sectional area, A_{cal}

In order to calculate the checking load, F_{ch} , the effective cross-sectional area, A_{cal} , of the bush shall first be determined.

A_{cal} depends on the material type, bush width B , s_1 and s_2 . See [Table 3](#).

Table 3 — Nominal dimensions for wall thickness, s_3 , backing material, s_1 , and bearing layer, s_2

Dimensions in millimetres

Wall thickness (see ISO 3547-1)	Nominal thicknesses	
	Backing material of bushes made from multi-layer materials	Bearing material layer of bushes made from multi-layer materials
s_3	s_1	s_2
0,5	0,3	0,2
0,75	0,53	0,22
1,0	0,68	0,32
1,5	1,1	0,4
2,0	1,55	0,45
2,5	2,05	0,45

The nominal size for B , s_1 and s_2 shall then be substituted into the corresponding equation given in [Table 4](#).

Table 4 — Calculation of effective cross-sectional area, A_{cal}

Material designation key (according to ISO 3547-4)	Calculation of effective cross sectional area A_{cal}
D1, D2, P1, P2, T2, Z1	$A_{cal} = B \times s_1$
B1, B2, D3, W1, W2, Y1, Y2	$A_{cal} = B \times \frac{s_1}{2}$
D4	$A_{cal} = B \times \frac{s_1}{3}$
R1, R2, R3, R4	$A_{cal} = B \times \left(s_1 + \frac{s_2}{3} \right)$
S1, S2, S3, S4, S5, S6	$A_{cal} = B \times \left(s_1 + \frac{s_2}{2} \right)$

7.2.4 Calculation of checking load, F_{ch}

See [Table 5](#).

Table 5 — Formulae for F_{ch}

Dimensions in millimetres

D_o nominal		F_{ch}
	≤ 6	$1\,500 \times \frac{A_{cal}}{d_{ch,1}}$ (rounded up 100 N)
> 6	≤ 12	$3\,000 \times \frac{A_{cal}}{d_{ch,1}}$ (rounded up 250 N)
> 12	≤ 80	$6\,000 \times \frac{A_{cal}}{d_{ch,1}}$ (rounded up 500 N)
> 80	≤ 180	$12\,000 \times \frac{A_{cal}}{d_{ch,1}}$ (rounded up 500 N)

NOTE When calculating F_{ch} , the factor 1 500, 3 000, 6 000 or 12 000 has the unit N/mm.

Lubrication grooves can reduce A_{cal} , depending upon their shape, position and method of manufacture. If the proportion is over 10 %, this shall be considered in the calculation.

For bushes which are not made in accordance with ISO 3547-1, the arithmetic average of the two limiting dimensions rounded up to the nearest 0,1 mm shall be used for B , s_1 and s_2 .

7.2.5 Limits for Δz

Upper limit:	0
Lower limit:	$-\frac{\pi}{2} \times \Delta D_o$ (rounded up to the nearest 0,005 mm)

7.3 Obtaining data — Example

Given:

Bush ISO 3547 — 30A 34 × 30 — S3

Outside diameter:

$$D_o = \left(34 \begin{array}{l} +0,085 \\ +0,045 \end{array} \right) \text{mm}$$

(in accordance with ISO 3547-1:—, Table 7)

Nominal wall thickness: $s_3 = 2 \text{ mm}$

Nominal thickness of the steel backing: $s_1 = 1,55 \text{ mm}$ (see [Table 3](#))

$$\begin{aligned} s_2 &= s_3 - s_1 \\ &= 2 \text{ mm} - 1,55 \text{ mm} \end{aligned}$$

$$s_2 = 0,45 \text{ mm}$$

Nominal width: $B = 30 \text{ mm}$

Material: steel/copper alloy S3 (in accordance with ISO 3547-4)

Results:

From [7.2.2](#):

$$\begin{aligned} d_{ch,1} &= D_{o, \max} - v \\ &= 34,085 \text{ mm} - 0,013 \text{ mm} \\ d_{ch,1} &= 34,072 \text{ mm} \end{aligned}$$

From [7.2.3](#):

$$\begin{aligned} A_{\text{cal}} &= B \times \left(s_1 + \frac{s_2}{2} \right) \\ &= 30 \times \left(1,55 + \frac{0,45}{2} \right) \text{mm}^2 \end{aligned}$$

$$A_{\text{cal}} = 53,25 \text{ mm}^2$$

From 7.2.4:

$$F_{ch} = 6\,000 \times \frac{A_{cal}}{d_{ch,1}}$$

$$= 6\,000 \times \frac{53,25}{34,072} = 9\,377 \text{ N}$$

$$F_{ch} = 9\,500 \text{ N (rounded up to the nearest 500 N)}$$

From 7.2.5:

Upper limit:

$$\Delta z$$

$$0$$

Lower limit:

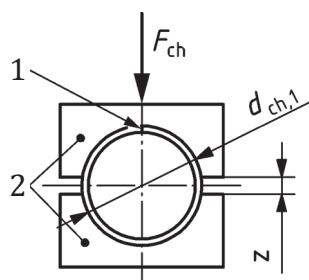
$$-\frac{\pi}{2} \times \Delta D_o$$

$$-\frac{\pi}{2} \times 0,040 \text{ mm} = -0,0628 \text{ mm} = -0,065 \text{ mm}$$

(rounded up to the nearest 0,005 mm)

7.4 Presentation of data on drawing — Example

See Figure 2 for an example of how the data obtained in 7.3 should be presented on the drawing.



Test A to ISO 3547-2

Checking block and setting plug $d_{ch,1} = d_{ch,2} = 34,072 \text{ mm}$

Checking load $F_{ch} = 9\,500 \text{ N}$

Limit for $\Delta z = 0 \text{ and } -0,065 \text{ mm}$

Outside diameter $D_o = 34,045 \text{ to } 34,085 \text{ mm}$

Key

- 1 position of butt joint
- 2 checking block

Figure 2 — Example of presentation of data on drawing

8 Test B

8.1 Description

The test is applicable to D_o up to 180 mm.

The test is carried out with two ring gauges, a GO ring gauge and a NO GO ring gauge.

The gauge diameters are determined empirically, based on the maximum and minimum values of the outside diameter (see ISO 3547-1:—, Table 7) to be checked, and shall be agreed between supplier and user.

It shall be possible to press the bush into the GO ring gauge with hand pressure (maximum force 250 N). However, with the same force it shall not be possible for the bush to enter the NO GO ring gauge (see ISO 3547-5).

NOTE In some cases, the accuracy of the check could be affected, e.g. by the out of roundness of the bush or by butt joints which are not closed. For this reason Test A is preferred.

8.2 Obtaining data — Example

Given:

Bush ISO 3547 — 30A 34 × 30 — S3

Outside diameter:

$$D_o = \left(34 \begin{array}{l} + 0,085 \\ + 0,045 \end{array} \right) \text{mm}$$

Material: steel/copper alloy S3 (in accordance with ISO 3547-4)

GO gauge diameter = 34,085 mm (found empirically)

NO GO gauge diameter = 34,045 mm (found empirically)

8.3 Presentation of data on drawing — Example

The data obtained should be presented on the drawing as in the following example:

Test B to ISO 3547-2

GO gauge diameter = 34,085 mm

NO GO gauge diameter = 34,045 mm

9 Test C

9.1 Description

In order to check the inside diameter, D_i , the bush is pressed into a ring gauge, whose nominal diameter corresponds to the dimension specified in [Table 6](#). Other details of the ring gauge should be according to ISO 3547-6.

The test is applicable to D_o up to 180 mm.

Inside diameter $D_{i,ch}$ shall be measured with a three-point measuring instrument in accordance with ISO 12301, or checked with a GO and NO GO plug gauge.

The plug gauges are calculated from the ring gauge diameter, $d_{ch,1}$, as follows.

GO plug: $d_{ch,1} - 2 \times s_{3,max}$

NO GO plug: $d_{ch,1} - 2 \times s_{3,min}$

The GO plug gauge shall enter the bush with minimum effort; the NO GO plug gauge shall not enter the bush manually (maximum force 250 N).

When the bush is pressed into the ring gauge, it is possible that there will be a permanent reduction in the outside diameter.

In order to enable the supplier and user to compare results, the test method should be agreed between them.

Table 6 — Ring gauge inside diameter, $d_{ch,1}$, for checking bush inside diameter, $D_{i, ch}$

Dimensions in millimetres

D_o nominal		$d_{ch,1}^a$
	≤ 10	$D_o + 0,008$
> 10	≤ 18	$D_o + 0,009$
> 18	≤ 30	$D_o + 0,011$
> 30	≤ 50	$D_o + 0,013$
> 50	≤ 80	$D_o + 0,015$
> 80	≤ 120	$D_o + 0,018$
> 120	≤ 180	$D_o + 0,020$

^a The size of $d_{ch,1}$ is made up of D_o and the rounded average value of the tolerance class H7 in accordance with ISO 286-2.

9.2 Obtaining data — Example

Given:

Bush ISO 3547 — 30B 34 × 30

Material: multilayer material P1 (in accordance with ISO 3547-4)

Ring gauge inside diameter: $d_{ch,1} = 34,013$ mm (in accordance with [Table 6](#))

Wall thickness: $s_3 = \left(\begin{matrix} + 0,005 \\ 2 \\ - 0,030 \end{matrix} \right) \text{mm}$

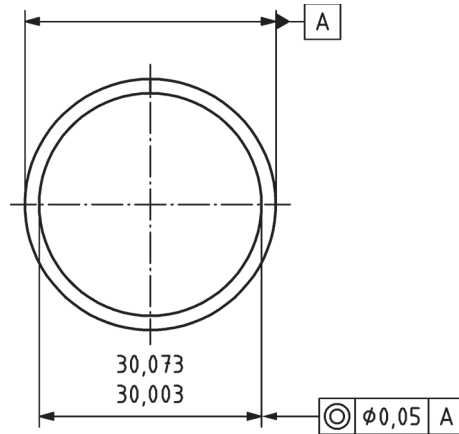
(in accordance with ISO 3547-1:—, Table 5, series B)

GO plug diameter: $d_{ch,2, \min} = d_{ch,1} - 2 \times s_{3, \max}$
 $= 34,013 \text{ mm} - 2 \times 2,005 \text{ mm}$
 $= 30,003 \text{ mm}$

NO GO plug diameter: $d_{ch,2, \max} = d_{ch,1} - 2 \times s_{3, \min}$
 $= 34,013 \text{ mm} - 2 \times 1,97 \text{ mm}$
 $= 30,073 \text{ mm}$

9.3 Presentation of data on drawing — Example

See [Figure 3](#) for an example of how the data obtained in [9.2](#) should be presented on the drawing.



Test C — Gauging — to ISO 3547-2

Key

- ^a With bush pressed into a ring gauge with $d_{ch,1} = 34,013$ mm.

Figure 3 — Example of presentation of data on drawing

10 Test D

10.1 Description

This method is applicable to bushes with D_o above 120 mm.

A precision measuring tape is used to measure the circumference of the bush.

Details of this text shall be agreed between supplier and user.

10.2 Obtaining data — Example

Given:

Bush ISO 3547 — 200A 205 × 100 — S3

Outside diameter:

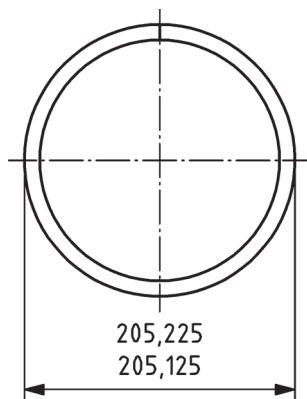
$$D_o = \left(205 \begin{array}{l} + 0,225 \\ + 0,125 \end{array} \right) \text{mm}$$

Material:

steel/copper alloy S3 (in accordance with ISO 3547-4)

10.3 Presentation of data on drawing — Example

See [Figure 4](#) for an example of how the data obtained in [10.2](#) should be presented on the drawing.



Test D to ISO 3547-2

Figure 4 — Example of presentation of data on drawing

11 Designation of tests according to this document

Test A is designated by

Test ISO 3547-2 — A

Test B is designated by

Test ISO 3547-2 — B

Test C is designated by

Test ISO 3547-2 — C

Test D is designated by

Test ISO 3547-2 — D

Bibliography

- [1] ISO 3547-6, *Plain bearings — Wrapped bushes — Part 6: Checking the inside diameter*

British Standards Institution (BSI)

BSI is the national body responsible for preparing British Standards and other standards-related publications, information and services.

BSI is incorporated by Royal Charter. British Standards and other standardization products are published by BSI Standards Limited.

About us

We bring together business, industry, government, consumers, innovators and others to shape their combined experience and expertise into standards-based solutions.

The knowledge embodied in our standards has been carefully assembled in a dependable format and refined through our open consultation process. Organizations of all sizes and across all sectors choose standards to help them achieve their goals.

Information on standards

We can provide you with the knowledge that your organization needs to succeed. Find out more about British Standards by visiting our website at bsigroup.com/standards or contacting our Customer Services team or Knowledge Centre.

Buying standards

You can buy and download PDF versions of BSI publications, including British and adopted European and international standards, through our website at bsigroup.com/shop, where hard copies can also be purchased.

If you need international and foreign standards from other Standards Development Organizations, hard copies can be ordered from our Customer Services team.

Copyright in BSI publications

All the content in BSI publications, including British Standards, is the property of and copyrighted by BSI or some person or entity that owns copyright in the information used (such as the international standardization bodies) and has formally licensed such information to BSI for commercial publication and use.

Save for the provisions below, you may not transfer, share or disseminate any portion of the standard to any other person. You may not adapt, distribute, commercially exploit, or publicly display the standard or any portion thereof in any manner whatsoever without BSI's prior written consent.

Storing and using standards

Standards purchased in soft copy format:

- A British Standard purchased in soft copy format is licensed to a sole named user for personal or internal company use only.
- The standard may be stored on more than 1 device provided that it is accessible by the sole named user only and that only 1 copy is accessed at any one time.
- A single paper copy may be printed for personal or internal company use only.

Standards purchased in hard copy format:

- A British Standard purchased in hard copy format is for personal or internal company use only.
- It may not be further reproduced – in any format – to create an additional copy. This includes scanning of the document.

If you need more than 1 copy of the document, or if you wish to share the document on an internal network, you can save money by choosing a subscription product (see 'Subscriptions').

Reproducing extracts

For permission to reproduce content from BSI publications contact the BSI Copyright & Licensing team.

Subscriptions

Our range of subscription services are designed to make using standards easier for you. For further information on our subscription products go to bsigroup.com/subscriptions.

With **British Standards Online (BSOL)** you'll have instant access to over 55,000 British and adopted European and international standards from your desktop. It's available 24/7 and is refreshed daily so you'll always be up to date.

You can keep in touch with standards developments and receive substantial discounts on the purchase price of standards, both in single copy and subscription format, by becoming a **BSI Subscribing Member**.

PLUS is an updating service exclusive to BSI Subscribing Members. You will automatically receive the latest hard copy of your standards when they're revised or replaced.

To find out more about becoming a BSI Subscribing Member and the benefits of membership, please visit bsigroup.com/shop.

With a **Multi-User Network Licence (MUNL)** you are able to host standards publications on your intranet. Licences can cover as few or as many users as you wish. With updates supplied as soon as they're available, you can be sure your documentation is current. For further information, email subscriptions@bsigroup.com.

Revisions

Our British Standards and other publications are updated by amendment or revision.

We continually improve the quality of our products and services to benefit your business. If you find an inaccuracy or ambiguity within a British Standard or other BSI publication please inform the Knowledge Centre.

Useful Contacts

Customer Services

Tel: +44 345 086 9001

Email (orders): orders@bsigroup.com

Email (enquiries): cservices@bsigroup.com

Subscriptions

Tel: +44 345 086 9001

Email: subscriptions@bsigroup.com

Knowledge Centre

Tel: +44 20 8996 7004

Email: knowledgecentre@bsigroup.com

Copyright & Licensing

Tel: +44 20 8996 7070

Email: copyright@bsigroup.com

BSI Group Headquarters

389 Chiswick High Road London W4 4AL UK