



BSI Standards Publication

**Rubber, vulcanized or
thermoplastic — Determination
of shear modulus and adhesion
to rigid plates — Quadruple-
shear methods**

National foreword

This British Standard is the UK implementation of ISO 1827:2016. It supersedes BS ISO 1827:2011 which is withdrawn.

The UK participation in its preparation was entrusted to Technical Committee PRI/22, Testing and analysis of rubber.

A list of organizations represented on this committee can be obtained on request to its secretary.

This publication does not purport to include all the necessary provisions of a contract. Users are responsible for its correct application.

© The British Standards Institution 2016.
Published by BSI Standards Limited 2016

ISBN 978 0 580 92840 6

ICS 83.060

Compliance with a British Standard cannot confer immunity from legal obligations.

This British Standard was published under the authority of the Standards Policy and Strategy Committee on 30 September 2016.

Amendments/Corrigenda issued since publication

Date	Text affected
------	---------------

**Rubber, vulcanized or
thermoplastic — Determination of
shear modulus and adhesion to rigid
plates — Quadruple-shear methods**

*Caoutchouc vulcanisé ou thermoplastique — Détermination du
module de cisaillement et de la force d'adhérence à des plaques
rigides — Méthodes du quadruple cisaillement*



COPYRIGHT PROTECTED DOCUMENT

© ISO 2016, Published in Switzerland

All rights reserved. Unless otherwise specified, no part of this publication may be reproduced or utilized otherwise in any form or by any means, electronic or mechanical, including photocopying, or posting on the internet or an intranet, without prior written permission. Permission can be requested from either ISO at the address below or ISO's member body in the country of the requester.

ISO copyright office
Ch. de Blandonnet 8 • CP 401
CH-1214 Vernier, Geneva, Switzerland
Tel. +41 22 749 01 11
Fax +41 22 749 09 47
copyright@iso.org
www.iso.org

Contents

Page

Foreword	iv
1 Scope	1
2 Normative references	1
3 Terms and definitions	1
4 Principle	2
4.1 Method A — Determination of the shear modulus.....	2
4.2 Method B — Determination of the adhesion.....	2
5 Apparatus	2
6 Calibration	2
7 Test piece	2
7.1 Shape and dimensions.....	2
7.2 Preparation.....	3
7.2.1 Preparation of rigid plates.....	3
7.2.2 Preparation using un moulded rubber.....	3
7.2.3 Preparation using pre-moulded rubber.....	3
7.3 Number of test pieces.....	4
8 Time interval between vulcanization and testing	4
9 Conditioning	4
10 Temperature of test	4
11 Procedure	4
11.1 Method A.....	4
11.2 Method B.....	5
12 Expression of results	5
12.1 Method A.....	5
12.2 Method B.....	6
13 Test report	6
13.1 For method A.....	6
13.2 For method B.....	7
Annex A (normative) Calibration schedule	8

Foreword

ISO (the International Organization for Standardization) is a worldwide federation of national standards bodies (ISO member bodies). The work of preparing International Standards is normally carried out through ISO technical committees. Each member body interested in a subject for which a technical committee has been established has the right to be represented on that committee. International organizations, governmental and non-governmental, in liaison with ISO, also take part in the work. ISO collaborates closely with the International Electrotechnical Commission (IEC) on all matters of electrotechnical standardization.

The procedures used to develop this document and those intended for its further maintenance are described in the ISO/IEC Directives, Part 1. In particular the different approval criteria needed for the different types of ISO documents should be noted. This document was drafted in accordance with the editorial rules of the ISO/IEC Directives, Part 2 (see www.iso.org/directives).

Attention is drawn to the possibility that some of the elements of this document may be the subject of patent rights. ISO shall not be held responsible for identifying any or all such patent rights. Details of any patent rights identified during the development of the document will be in the Introduction and/or on the ISO list of patent declarations received (see www.iso.org/patents).

Any trade name used in this document is information given for the convenience of users and does not constitute an endorsement.

For an explanation on the meaning of ISO specific terms and expressions related to conformity assessment, as well as information about ISO's adherence to the World Trade Organization (WTO) principles in the Technical Barriers to Trade (TBT) see the following URL: www.iso.org/iso/foreword.html.

The committee responsible for this document is ISO/TC 45, *Rubber and rubber products*, Subcommittee SC 2, *Testing and analysis*.

This fifth edition cancels and replaces the fourth edition (ISO 1827:2011), which has been technically revised by changing symbols in [12.2.2](#).

Rubber, vulcanized or thermoplastic — Determination of shear modulus and adhesion to rigid plates — Quadruple-shear methods

WARNING — Persons using this document should be familiar with normal laboratory practice. This document does not purport to address all of the safety problems, if any, associated with its use. It is the responsibility of the user to establish appropriate safety and health practices and to ensure compliance with any national regulatory conditions.

IMPORTANT — Certain procedures specified in this document might involve the use or generation of substances, or the generation of waste, that could constitute a local environmental hazard. Reference should be made to appropriate documentation on safe handling and disposal after use.

1 Scope

This document specifies methods for the determination of the modulus in shear and the strength of bonds of rubber to metal or other rigid plates, using rubber bonded between four parallel plates.

Method A describes the determination of the modulus in shear.

Method B describes the determination of the strength of the bonds.

The methods are applicable primarily to test pieces prepared in the laboratory under standard conditions, such as can be used to provide data for the development and control of rubber compounds and methods of manufacture of bonded shear units.

2 Normative references

The following documents are referred to in the text in such a way that some or all of their content constitutes requirements of this document. For dated references, only the edition cited applies. For undated references, the latest edition of the referenced document (including any amendments) applies.

ISO 5893:2002, *Rubber and plastics test equipment — Tensile, flexural and compression types (constant rate of traverse) — Specification*

ISO 18899:2013, *Rubber — Guide to the calibration of test equipment*

ISO 23529, *Rubber — General procedures for preparing and conditioning test pieces for physical test methods*

3 Terms and definitions

For the purposes of this document, the following terms and definitions apply.

ISO and IEC maintain terminological databases for use in standardization at the following addresses:

- IEC Electropedia: available at <http://www.electropedia.org/>
- ISO Online browsing platform: available at <http://www.iso.org/obp>

3.1 shear modulus

applied shear stress, calculated with respect to the bonded area of the rubber in a test piece, divided by the resultant shear strain in the direction of application of the stress

Note 1 to entry: The shear strain (γ) is half the measured deformation divided by the thickness of one rubber block or element. The shear stress (τ) is the applied force divided by twice the area of a bonded face of one rubber block or element.

Note 2 to entry: The form of the test piece specified ensures that there is zero applied stress in the direction normal to the bonded surfaces, so that the deformation can be regarded as simple shear.

Note 3 to entry: This definition of shear modulus is sometimes referred to as the secant modulus.

4 Principle

4.1 Method A — Determination of the shear modulus

The force required to obtain a range of predetermined shear strains of a unit of standard dimensions comprising four parallelepipeds of rubber symmetrically disposed and bonded to four parallel rigid plates is measured, the forces being parallel to the bonding surfaces and, as a rule, non-destructive, i.e. of maximum values appreciably lower than the bond strength.

4.2 Method B — Determination of the adhesion

The force required to cause the rupture of a unit as described for method A is measured.

5 Apparatus

5.1 Test machine, complying with the requirements of ISO 5893, capable of measuring force with an accuracy corresponding to class 1, as defined in ISO 5893:2002, and with a rate of traverse of the moving grip of 5 mm/min (method A) or 50 mm/min (method B).

The test machine shall include apparatus to measure the deformation of the rubber of the test piece to an accuracy of 0,02 mm.

5.2 Fixtures, for holding the test pieces in the grips, provided with a universal joint to permit accurate centring of the line of action of the applied force.

5.3 Environmental chamber, suitable for carrying out tests at the temperature chosen or specified (see [Clause 10](#)), conforming to the requirements of ISO 23529.

6 Calibration

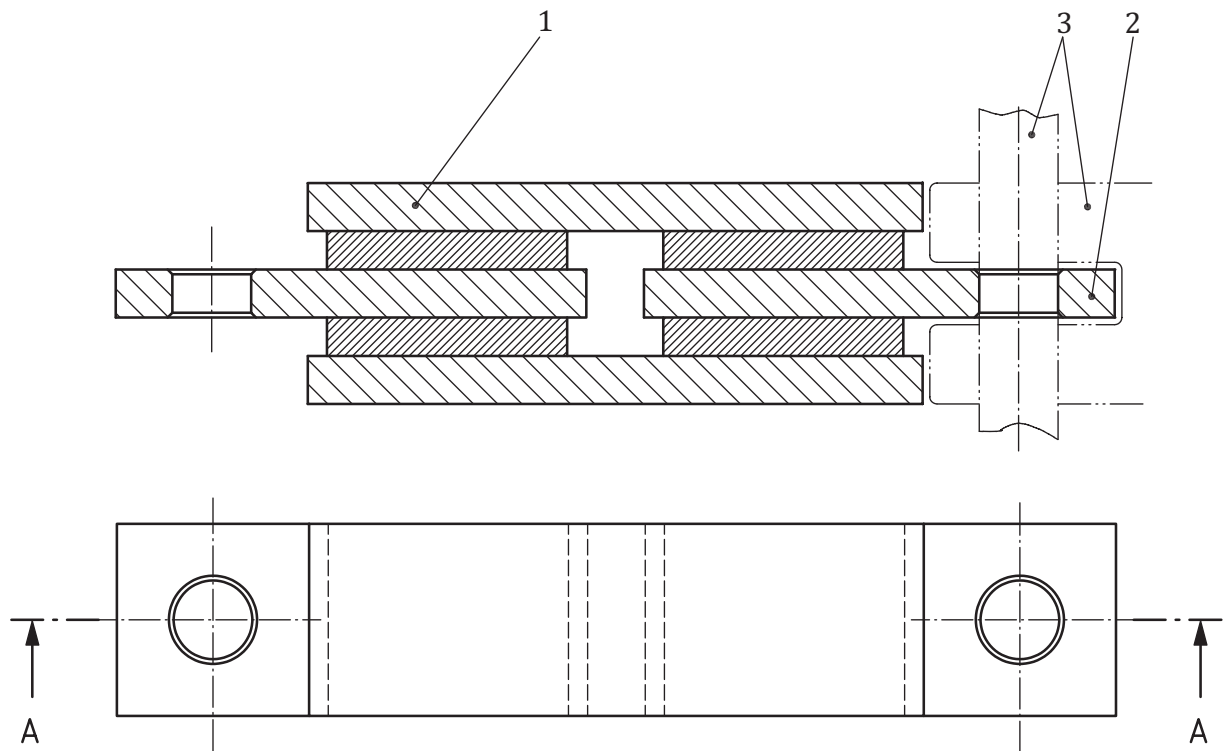
The test apparatus shall be calibrated in accordance with the schedule given in [Annex A](#).

7 Test piece

7.1 Shape and dimensions

The test piece shall consist of four identical parallelepipedic rubber elements 4 mm \pm 1 mm thick, 20 mm \pm 5 mm wide and 25 mm \pm 5 mm long, bonded on each of their two largest opposite faces to the mating faces of four rigid plates of the same width and of appropriate lengths to obtain a symmetrical double-sandwich arrangement, means being provided at the free external end of each central plate to

enable it to be attached to a holding fixture. The rigid plates shall be of sufficient thickness to withstand bending. A typical arrangement is shown in [Figure 1](#).



Key

- 1 two external plates
- 2 two internal plates
- 3 pin and fixture for tensile loading

Figure 1 — Test piece arrangement

7.2 Preparation

7.2.1 Preparation of rigid plates

Rectangular rigid plates of suitable dimensions shall be prepared and treated in accordance with the requirements of a suitable adhesive system.

7.2.2 Preparation using un moulded rubber

Prepared rigid plates and suitably sized rubber blanks shall be moulded either by compression or by transfer methods. The moulding shall be carried out using a time and temperature sequence appropriate to the rubber under test. At the conclusion of moulding, care shall be taken in removing the test pieces from the mould to avoid subjecting the adhered surfaces to undue stress.

7.2.3 Preparation using pre-moulded rubber

The four rubber elements for each test piece may be cut from a pre-moulded sheet of uniform thickness or from a rubber product. In either case, care shall be taken to ensure that all four elements are equal in all their dimensions to within $\pm 0,1$ mm.

The elements shall be bonded to the prepared rigid plates using an adhesive system giving a high-modulus bond.

7.3 Number of test pieces

The test shall be carried out on three (method A) or five (method B) test pieces.

8 Time interval between vulcanization and testing

Unless otherwise specified for technical reasons, the time interval between vulcanization and testing shall be in accordance with ISO 23529.

9 Conditioning

9.1 When a test is made at one of the standard laboratory temperatures specified in ISO 23529, the test piece shall be maintained at that condition for at least 3 h before the test.

9.2 When tests are made at subnormal or elevated temperatures, the test pieces shall be maintained at the conditions of test for a period of time sufficient to reach temperature equilibrium with the test environment, or for the period of time required by the specification covering the material or product being tested.

10 Temperature of test

Carry out the test at one of the temperatures specified in ISO 23529. Unless otherwise specified, one of the standard laboratory temperatures shall be used.

The same temperature shall be used for any series of tests intended to be comparable.

11 Procedure

11.1 Method A

11.1.1 Determine the dimensions of the rubber elements in the test piece. Where applicable, the requirements of ISO 23529 shall be met.

For test pieces prepared by vulcanization in a mould, the mould dimensions may be used to determine the area of each element. The thickness shall be determined, from measurements of the rigid plates and of the moulded test piece, by difference. For test pieces prepared from pre-moulded rubber elements, the dimensions of the elements shall be determined before bonding.

11.1.2 After conditioning as specified in [Clause 9](#), immediately mount the test piece in the test machine, taking care to ensure freedom of longitudinal self-alignment with the direction of force application.

For some applications, a mechanical conditioning procedure could be required. In such cases, apply five successive shear-loading cycles from 0 % to 30 %. During mechanical conditioning and subsequent testing, maintain the test piece at the test temperature.

11.1.3 When the test piece is mounted in the test machine, immediately zero the force-measuring and deformation-measuring apparatus while maintaining a slight traction force; for example, 1 % of the expected maximum force. Immediately apply an increasing traction force at a rate of separation of the jaws of 5 mm/min \pm 1 mm/min until a maximum shear strain of 30 % is reached, and record the force/deformation curve.

11.2 Method B

11.2.1 Determine the dimensions of the rubber elements in the test piece. Where applicable, the requirements of ISO 23529 shall be met.

For test pieces prepared by vulcanization in a mould, the mould dimensions may be used to determine the area of each element. The thickness shall be determined, from measurements of the rigid plates and of the moulded test piece, by difference.

For test pieces prepared from pre-moulded rubber elements, the dimensions of the elements shall be determined before bonding.

11.2.2 After conditioning as specified in [Clause 9](#), immediately mount the test piece in the test machine, taking care to ensure freedom of longitudinal self-alignment with the direction of force application.

Operate the test machine at a rate of separation of the jaws of 50 mm/min ± 5 mm/min until the test piece breaks. Record the maximum force.

Recover the broken pieces and examine the failure surfaces.

12 Expression of results

12.1 Method A

The shear modulus shall be determined at a shear strain of 25 %.

Calculate the shear strain, γ , from [Formula \(1\)](#):

$$\gamma = \frac{d}{2c} \quad (1)$$

where

d is the deformation, in millimetres, of the test piece;

c is the thickness, in millimetres, of one rubber element.

Calculate the deformation corresponding to 25 % shear strain, d_{25} , in millimetres, from [Formula \(2\)](#):

$$d_{25} = 0,25 \times 2c \quad (2)$$

From the force/deformation curve, determine the force needed to give 25 % shear strain, F_{25} .

Calculate the shear stress at 25 % strain, τ_{25} , in newtons per square millimetre, from [Formula \(3\)](#):

$$\tau_{25} = \frac{F_{25}}{2A} \quad (3)$$

where

F is the force, in newtons;

A is the bonded area, in square millimetres, of one face of one rubber element.

Calculate the shear modulus, G , in newtons per square millimetre, from [Formula \(4\)](#):

$$G = \frac{\tau_{25}}{\gamma_{25}} = \frac{\tau_{25}}{0,25} \quad (4)$$

Calculate the mean value of the shear modulus for the three test pieces.

12.2 Method B

12.2.1 Calculate the adhesion value, in pascals, by dividing the maximum force by the total bonded area of one of the double sandwiches on the corresponding rigid plate, as given in [Formula \(5\)](#):

$$\text{i.e. adhesion} = \frac{F_{\max}}{2A} \quad (5)$$

where

F_{\max} is the maximum force, in newtons;

A is the bonded area, in square millimetres, of one face of one bonded rubber block or element.

12.2.2 Use the following symbols to indicate the type of adhesion failure.

- R Failure in the rubber
- RC Failure at the interface between the rubber and the layer of adhesive
- CP Failure at the interface between the layer of adhesive and the primer (if used)
- PS Failure at the interface between the primer (if used) and the substrate
- CS Failure at the interface between the adhesive and the substrate (when no primer is used)
- D Failure at the interface between the rubber and the substrate in the case of direct adhesion, i.e. no adhesive is used
- S Failure in the substrate

13 Test report

13.1 For method A

The test report shall contain the following information:

- a) the reference number of this document, i.e. ISO 1827;
- b) the method used;
- c) test piece details:
 - 1) all details necessary for identification of the rubber compound;
 - 2) the bonding and/or moulding process used (direct vulcanization, adhesive, compression, transfer, casting, etc.);
 - 3) the duration and temperature of vulcanization and/or curing of the adhesive;

- 4) the date of vulcanization and/or curing of the adhesive;
- d) test details:
 - 1) whether or not mechanical conditioning was used;
 - 2) the temperature of the test;
 - 3) details of any procedures not specified in this document;
- e) test results:
 - 1) the individual test results;
 - 2) the mean value of the shear modulus;
- f) the date of the test.

13.2 For method B

The test report shall contain the following information:

- a) the reference number of this document, i.e. ISO 1827;
- b) the method used;
- c) test piece details:
 - 1) all details necessary for identification of the rubber compound;
 - 2) the nature of the rigid plates (material, surface roughness, etc.);
 - 3) a description of the method used to secure adhesion (preparation of surface, adhesive system used, etc.);
 - 4) the bonding and/or moulding process used (direct vulcanization, adhesive, compression, transfer, casting, etc.);
 - 5) the duration and temperature of vulcanization and/or curing of the adhesive;
 - 6) the date of vulcanization and/or curing of the adhesive;
- d) test details:
 - 1) the temperature of the test;
 - 2) details of any procedures not specified in this document;
- e) the results for all five test pieces, calculated in accordance with [12.2.1](#), for the adhesion value;
- f) the date of the test.

Annex A (normative)

Calibration schedule

A.1 Inspection

Before any calibration is undertaken, the condition of the items to be calibrated shall be ascertained by inspection and recorded in any calibration report or certificate. It shall be reported whether calibration is carried out in the “as-received” condition or after rectification of any abnormality or fault.

It shall be ascertained that the apparatus is generally fit for the intended purpose, including any parameters specified as approximate and for which the apparatus does not therefore need to be formally calibrated. If such parameters are liable to change, then the need for periodic checks shall be written into the detailed calibration procedures.

A.2 Schedule

Verification/calibration of the test apparatus is a mandatory part of this document. However, the frequency of calibration and the procedures used are, unless otherwise stated, at the discretion of the individual laboratory, using ISO 18899 for guidance.

The calibration schedule given in [Table A.1](#) has been compiled by listing all of the parameters specified in the test method, together with the specified requirement. A parameter and requirement might relate to the main test apparatus, to part of that apparatus or to an ancillary apparatus necessary for the test.

For each parameter, a calibration procedure is indicated by reference to ISO 18899, to another publication or to a procedure particular to the test method which is detailed (whenever a calibration procedure which is more specific or detailed than that in ISO 18899 is available, it shall be used in preference).

The verification frequency for each parameter is given by a code-letter. The code-letters used in the calibration schedule are as follows:

- C requirement to be confirmed, but no measurement;
- S standard interval as given in ISO 18899;
- U in use.

Table A.1 — Calibration frequency schedule

Parameter	Requirement	Subclause in ISO 18899:2013	Verification frequency guide	Notes
Test machine	Complying with ISO 5893	21.1	S	
Force measurement accuracy	Class 1	21.2	S	
Rate of traverse of moving grip	5 mm/min or 50 mm/min	23.4	S	See ISO 5893 for tolerances
Deformation measurement	Accurate to 0,02 mm	15.4	S	
Fixtures to mount test piece in grips	Provided with universal joint for test piece to self-align with direction of force	C	U	
Environmental chamber	Complying with ISO 23529			See ISO 23529 for details

In addition to the items listed in [Table A.1](#), use of the following is implied, all of which need calibrating in accordance with ISO 18899:

- timer;
- thermometer for monitoring the conditioning and test temperatures;
- instruments for determining the dimensions of the test pieces.

British Standards Institution (BSI)

BSI is the national body responsible for preparing British Standards and other standards-related publications, information and services.

BSI is incorporated by Royal Charter. British Standards and other standardization products are published by BSI Standards Limited.

About us

We bring together business, industry, government, consumers, innovators and others to shape their combined experience and expertise into standards-based solutions.

The knowledge embodied in our standards has been carefully assembled in a dependable format and refined through our open consultation process. Organizations of all sizes and across all sectors choose standards to help them achieve their goals.

Information on standards

We can provide you with the knowledge that your organization needs to succeed. Find out more about British Standards by visiting our website at bsigroup.com/standards or contacting our Customer Services team or Knowledge Centre.

Buying standards

You can buy and download PDF versions of BSI publications, including British and adopted European and international standards, through our website at bsigroup.com/shop, where hard copies can also be purchased.

If you need international and foreign standards from other Standards Development Organizations, hard copies can be ordered from our Customer Services team.

Copyright in BSI publications

All the content in BSI publications, including British Standards, is the property of and copyrighted by BSI or some person or entity that owns copyright in the information used (such as the international standardization bodies) and has formally licensed such information to BSI for commercial publication and use.

Save for the provisions below, you may not transfer, share or disseminate any portion of the standard to any other person. You may not adapt, distribute, commercially exploit, or publicly display the standard or any portion thereof in any manner whatsoever without BSI's prior written consent.

Storing and using standards

Standards purchased in soft copy format:

- A British Standard purchased in soft copy format is licensed to a sole named user for personal or internal company use only.
- The standard may be stored on more than 1 device provided that it is accessible by the sole named user only and that only 1 copy is accessed at any one time.
- A single paper copy may be printed for personal or internal company use only.

Standards purchased in hard copy format:

- A British Standard purchased in hard copy format is for personal or internal company use only.
- It may not be further reproduced – in any format – to create an additional copy. This includes scanning of the document.

If you need more than 1 copy of the document, or if you wish to share the document on an internal network, you can save money by choosing a subscription product (see 'Subscriptions').

Reproducing extracts

For permission to reproduce content from BSI publications contact the BSI Copyright & Licensing team.

Subscriptions

Our range of subscription services are designed to make using standards easier for you. For further information on our subscription products go to bsigroup.com/subscriptions.

With **British Standards Online (BSOL)** you'll have instant access to over 55,000 British and adopted European and international standards from your desktop. It's available 24/7 and is refreshed daily so you'll always be up to date.

You can keep in touch with standards developments and receive substantial discounts on the purchase price of standards, both in single copy and subscription format, by becoming a **BSI Subscribing Member**.

PLUS is an updating service exclusive to BSI Subscribing Members. You will automatically receive the latest hard copy of your standards when they're revised or replaced.

To find out more about becoming a BSI Subscribing Member and the benefits of membership, please visit bsigroup.com/shop.

With a **Multi-User Network Licence (MUNL)** you are able to host standards publications on your intranet. Licences can cover as few or as many users as you wish. With updates supplied as soon as they're available, you can be sure your documentation is current. For further information, email subscriptions@bsigroup.com.

Revisions

Our British Standards and other publications are updated by amendment or revision.

We continually improve the quality of our products and services to benefit your business. If you find an inaccuracy or ambiguity within a British Standard or other BSI publication please inform the Knowledge Centre.

Useful Contacts

Customer Services

Tel: +44 345 086 9001

Email (orders): orders@bsigroup.com

Email (enquiries): cservices@bsigroup.com

Subscriptions

Tel: +44 345 086 9001

Email: subscriptions@bsigroup.com

Knowledge Centre

Tel: +44 20 8996 7004

Email: knowledgecentre@bsigroup.com

Copyright & Licensing

Tel: +44 20 8996 7070

Email: copyright@bsigroup.com

BSI Group Headquarters

389 Chiswick High Road London W4 4AL UK