

Assembly tools for screws and nuts — Drive ends for hand and machine-operated screwdriver bits and connecting parts — Dimensions, torque testing

ICS 25.140.30

NO COPYING WITHOUT BSI PERMISSION EXCEPT AS PERMITTED BY COPYRIGHT LAW



National foreword

This British Standard reproduces verbatim ISO 1173:2001 and implements it as the UK national standard.

The UK participation in its preparation was entrusted to Technical Committee MTE/15/13, Assembly tools for screws and nuts, pliers and nippers, which has the responsibility to:

- aid enquirers to understand the text;
- present to the responsible international/European committee any enquiries on the interpretation, or proposals for change, and keep the UK interests informed;
- monitor related international and European developments and promulgate them in the UK.

A list of organizations represented on this committee can be obtained on request to its secretary.

Cross-references

The British Standards which implement international publications referred to in this document may be found in the BSI Standards Catalogue under the section entitled "International Standards Correspondence Index", or by using the "Find" facility of the BSI Standards Electronic Catalogue.

A British Standard does not purport to include all the necessary provisions of a contract. Users of British Standards are responsible for their correct application.

Compliance with a British Standard does not of itself confer immunity from legal obligations.

Summary of pages

This document comprises a front cover, an inside front cover, the ISO title page, pages ii and iii, a blank page, pages 1 to 8, an inside back cover and a back cover.

The BSI copyright date displayed in this document indicates when the document was last issued.

This British Standard, having been prepared under the direction of the Engineering Sector Committee, was published under the authority of the Standards Committee and comes into effect on 15 July 2001

Amendments issued since publication

Amd. No.	Date	Comments

© BSI 07-2001

ISBN 0 580 37710 5

**Assembly tools for screws and nuts —
Drive ends for hand- and machine-operated
screwdriver bits and connecting parts —
Dimensions, torque testing**

*Outils de manœuvre pour vis et écrous — Entraînements des embouts
tournevis à main et à machine et éléments de connexion — Dimensions,
couple d'essai*



Reference number
ISO 1173:2001(E)

Foreword

ISO (the International Organization for Standardization) is a worldwide federation of national standards bodies (ISO member bodies). The work of preparing International Standards is normally carried out through ISO technical committees. Each member body interested in a subject for which a technical committee has been established has the right to be represented on that committee. International organizations, governmental and non-governmental, in liaison with ISO, also take part in the work. ISO collaborates closely with the International Electrotechnical Commission (IEC) on all matters of electrotechnical standardization.

International Standards are drafted in accordance with the rules given in the ISO/IEC Directives, Part 3.

Draft International Standards adopted by the technical committees are circulated to the member bodies for voting. Publication as an International Standard requires approval by at least 75 % of the member bodies casting a vote.

Attention is drawn to the possibility that some of the elements of this International Standard may be the subject of patent rights. ISO shall not be held responsible for identifying any or all such patent rights.

International Standard ISO 1173 was prepared by Technical Committee ISO/TC 29, *Small tools*, Subcommittee SC 10, *Assembly tools for screws and nuts, pliers and nippers*.

This third edition cancels and replaces the second edition (ISO 1173:1988), which has been technically revised.

Annex A of this International Standard is for information only.

.....

.....

.....

.....

.....

.....

Assembly tools for screws and nuts — Drive ends for hand- and machine-operated screwdriver bits and connecting parts — Dimensions, torque testing

1 Scope

This International Standard specifies the dimensions and torque testing of drive ends for hand- and machine-operated screwdriver bits as well as to driving spindles of screw driving machines.

It ensures the interchangeability of tool bits and tool holders.

This International Standard defines only the distinctive features of individual drive ends. Details of design, e.g. of fixing devices, are left to the user of this International Standard.

2 Dimensions

See Figures 1 to 8 and Tables 1 to 8.

Details not given shall be chosen appropriately.

ISO 1173:2001(E)

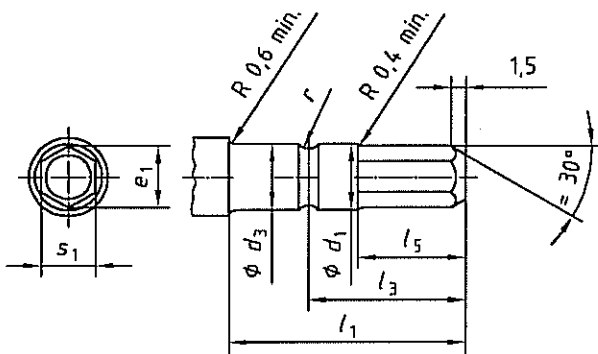
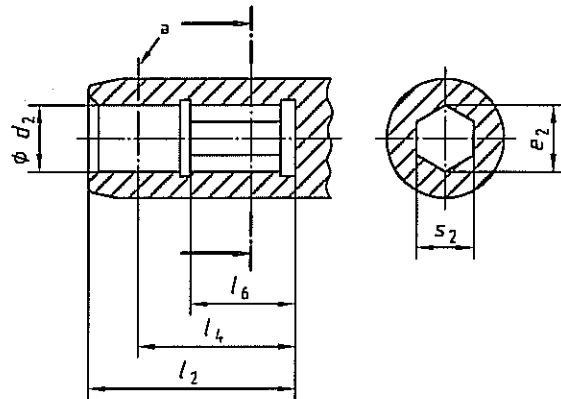


Figure 1 — Male hexagon form A



a Retaining system of the manufacturer's choice

Figure 2 — Female hexagon form B

Table 1 — Male hexagon form A

Dimensions in millimetres

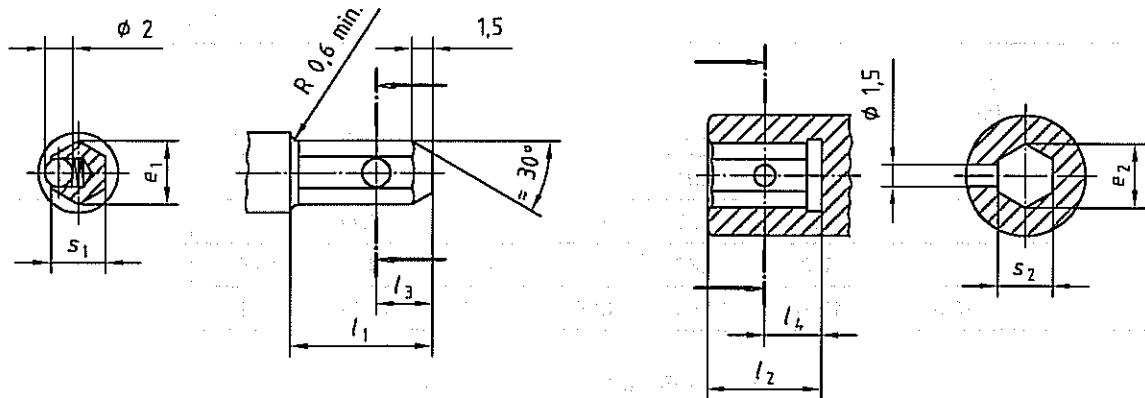
Form	Nominal dimension	s_1		d_1	d_3	e_1		l_1	l_3	l_5	r
		max.	min.	h9	h12	max.	min.	min.	$\begin{matrix} 0 \\ -0,2 \end{matrix}$	$\begin{matrix} +0,4 \\ 0 \end{matrix}$	min.
A	3	3	2,96	3,6	3	3,39	3,34	19,5	11,9	7,4	1
	5,5	5,50	5,45	6,7	5,7	6,21	6,16	24	16	10,9	1,25

Table 2 — Female hexagon form B

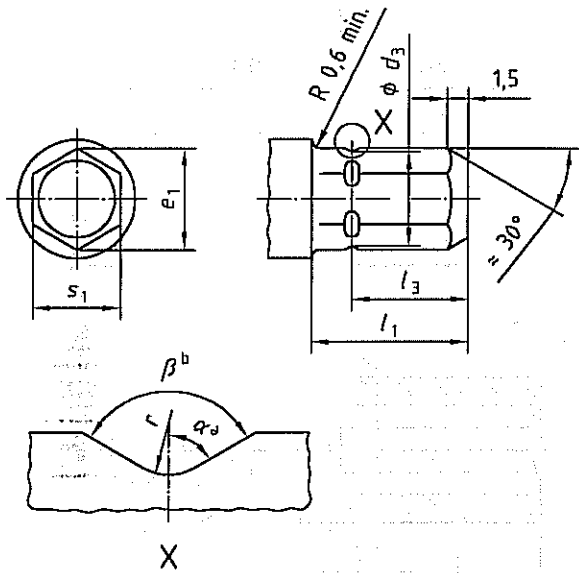
Dimensions in millimetres

Form	Nominal dimension	s_2		d_2	e_2	l_2	l_4	l_6
		max.	min.	D10	min.	$\pm 0,1$	$\begin{matrix} +0,2 \\ 0 \end{matrix}$	$\begin{matrix} 0 \\ -0,4 \end{matrix}$
B	3	3,06	3,02	3,6	3,41	16,5	11,9	7,2
	5,5	5,58	5,53	6,7	6,25	21	16	10,7

Nominal dimension 4

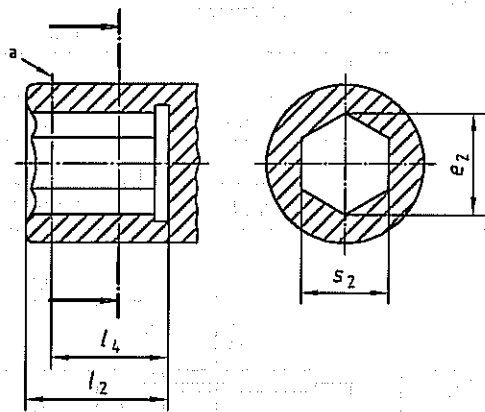


Nominal dimensions 6,3, 8 and 12,5



- a $40^\circ \leq \alpha \leq 60^\circ$
- b $80^\circ \leq \beta \leq 120^\circ$

Figure 3 — Male hexagon form C



- a Retaining system of the manufacturer's choice.

Figure 4 — Female hexagon form D

Table 3 — Male hexagon form C

Dimensions in millimetres

Form	Nominal dimension	s_1		d_3	e_1		l_1	l_3	r
		max.	min.	h12	max.	min.	min.	0 $-0,2$	min.
C	4	3,96	3,91	—	4,48	4,42	9	4	—
	6,3	6,35	6,29	6,7	7,18	7,11	11	8,2	0,3
	8	7,93	7,87	8,2	8,96	8,90	13,5	10,2	
	12,5	12,70	12,63	13,5	14,35	14,27	15,9	12,7	

Table 4 — Female hexagon form D

Dimensions in millimetres

Form	Nominal dimension	s_2		e_2	l_2	l_4
		max.	min.	min.	$\pm 0,1$	$+0,2$ 0
D	4	4,04	3,99	4,51	8	4
	6,3	6,45	6,39	7,22	10	8,2
	8	8,03	7,97	9	12,5	10,2
	12,5	12,80	12,75	14,4	14,9	12,7

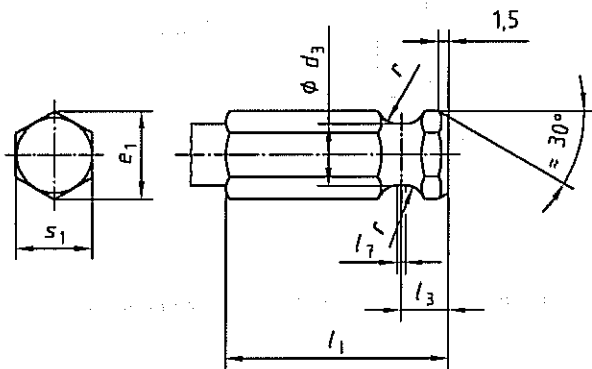
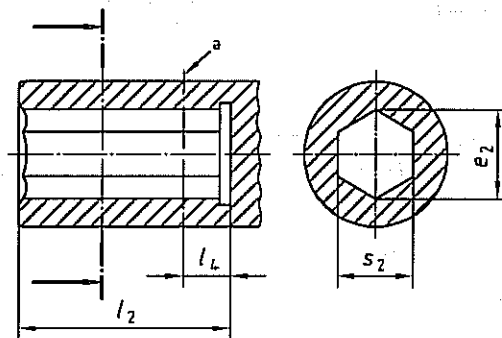


Figure 5 — Male hexagon form E



a Retaining system of the manufacturer's choice.

Figure 6 — Female hexagon form F

Table 5 — Male hexagon form E

Dimensions in millimetres

Form	Nominal dimension	s_1		d_3	e_1		l_1	l_3	l_7	r
		max.	min.	h12	max.	min.	min.	0 $-0,1$	\approx	min.
E	6,3	6,35	6,29	4,7	7,18	7,11	25	9,5	1	2,4
	(8) ^a	7,93	7,87	6,3	8,96	8,90	27	5,4	1,2	2,4
	11,2	11,11	11,04	8,7	12,56	12,48	31,5	6,7	1,2	2,8

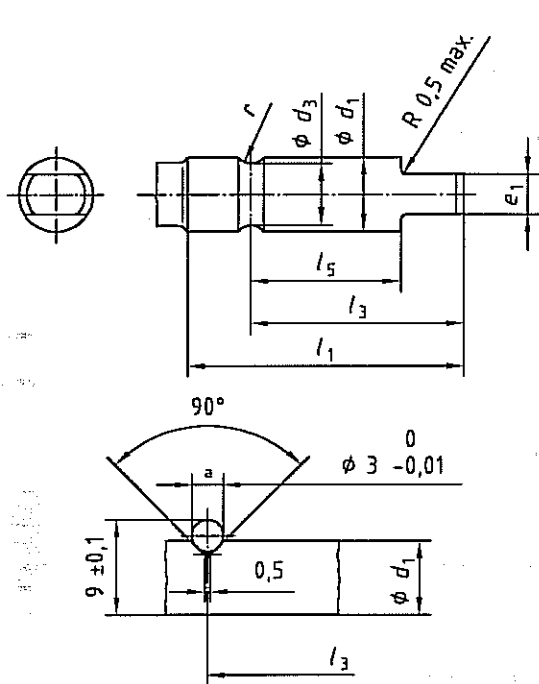
^a Non-preferred dimension.

Table 6 — Female hexagon form F

Dimensions in millimetres

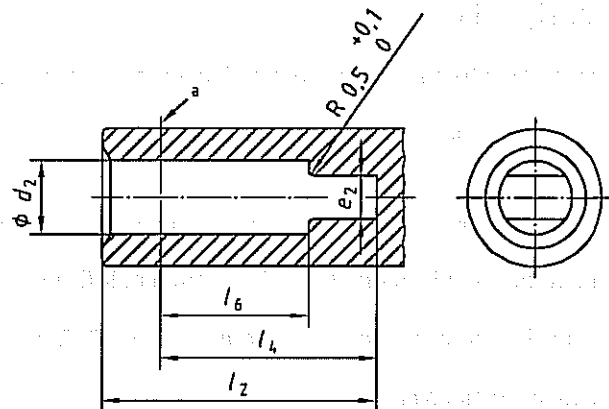
Form	Nominal dimension	e_2		e_2 min.	l_2 max.	l_4 $+0,1$ 0
		max.	min.			
F	6,3	6,45	6,39	7,22	24	9,5
	(8) ^a	8,03	7,97	9	25,5	5,4
	11,2	11,23	11,16	12,61	30	6,7

^a Non-preferred dimension.



^a Arrangement with test role for the determination of the groove depth.

Figure 7 — Male flat end form G



^a Retaining system of the manufacturer's choice.

Figure 8 — Female flat end form H

Table 7 — Male flat end form G

Dimensions in millimetres

Form	Nominal dimension	d_1	d_3	e_1		l_1	l_3	l_5	r
		f8	h12	max.	min.	min.	$\pm 0,2$	$\pm 0,2$	min.
G	7	7	5,8	3,86	3,74	26	20	14	1,5

Table 8 — Female flat end form H

Dimensions in millimetres

Form	Nominal dimension	d_2	e_2	l_2	l_4	l_6
H	7	H10	$+0,1$ 0	max.	min.	$\pm 0,2$
		7	4,1	26	20,5	14

ISO 1173:2001(E)

3 Design

Form D

- Magnetic types for hand-operated screwdriver bits may be manufactured without a bore for a ball or without a groove for a retaining (snap) ring.

Form G

- Male flat ends may also have a V-shaped ring groove instead of a circular arc shape ring groove (of the manufacturer's choice), which shall comply with the pictorial representation.

4 Designation

A drive end conforming to this International Standard shall be designated by

- "Male hexagon" or "Female hexagon" in the case of a design with a male or a female hexagon drive respectively;
- "Male flat end" or "Female flat end" in the case of a design with a male or female flat end respectively;
- reference to this International Standard, i.e. ISO 1173;
- capital letter for the respective form (A, B, C, D, E, F, G or H);
- nominal dimension.

EXAMPLE 1 A male hexagon Form A of nominal dimension 3 is designated as follows:

Male hexagon ISO 1173 - A 3

EXAMPLE 2 A female hexagon Form B of nominal dimension 3 is designated as follows:

Female hexagon ISO 1173 - B 3

EXAMPLE 3 A male hexagon Form C of nominal dimension 8 is designated as follows:

Male hexagon ISO 1173 - C 8

EXAMPLE 4 A female hexagon Form D of nominal dimension 8 is designated as follows:

Female hexagon ISO 1173 - D 8

EXAMPLE 5 A male hexagon Form E of nominal dimension 11,2 is designated as follows:

Male hexagon ISO 1173 - E 11,2

EXAMPLE 6 A female hexagon Form F of nominal dimension 11,2 is designated as follows:

Female hexagon ISO 1173 - F 11,2

EXAMPLE 7 A male flat end Form G of nominal dimension 7 is designated as follows:

Male flat end ISO 1173 - G 7

EXAMPLE 8 A female hexagon Form H of nominal dimension 7 is designated as follows:

Female flat end ISO 1173 - H 7

5 Torque testing

5.1 Test piece

For torque testing, test devices shall be used which correspond in their dimensions to the respective "counterbodies" of the connecting parts to be tested.

The same dimensional specifications apply to the test pieces as to the connection parts, however, they do not have to be equipped with a retaining system.

The torque test device and the test pieces shall have a hardness of at least HRC 62.

5.2 Test values

The test torque values for torque testing are given in Table 9.

Following the application of the test torque the connecting parts shall show no permanent deformation or any other damage, such as e.g. cracks or fractures, which might affect the usability of the tool.

Table 9 — Test torque values

Form	Nominal dimension	Test torque ^a
	mm	min. N·m
A, B	3	7,6
	5,5	47
C, D	4	18
	6,3	71
	8	144
	12,5	478
E, F	6,3	71
	8	144
	11,2	396
G, H	7	25

^a The values for the test torque apply only to connecting parts made of alloyed steel for hardening and tempering or tool steel, heat treated over its whole length, having a hardness of at least HRC 53.

When testing with the test torque it shall be ensured that the connecting parts to be tested are engaged under load over their whole lengths l_1 and l_2 .

The test torque shall be applied smoothly and steadily. Following the application of the minimum test torque, any resulting damage or deformation shall not affect the usability of the tool.

Annex A (informative)

Explanatory notes

In the case of screwdriver bits and driving spindles of electric and pneumatic screwdrivers driving is performed by hexagon connection or a flat end connection. The interchangeability of tool bits and tool holders is ensured by the standardization of the drive ends.

To emphasize the relation between the matching dimensions of male and female hexagons or male and female flat ends respectively, this International Standard has been editorially designed such that dimensional letters for male parts have only uneven subscripts (1, 3, 5 ...) and for female parts even subscripts (2, 4, 6 ...).

In order to coordinate the corner dimensions of the hexagon ends they were calculated according to following formulae:

$$e_{1 \max} = 1,13 s_{1 \max}$$

$$e_{1 \min} = 1,13 s_{1 \min}$$

$$e_{2 \min} = 1,13 s_{2 \min}$$

BSI — British Standards Institution

BSI is the independent national body responsible for preparing British Standards. It presents the UK view on standards in Europe and at the international level. It is incorporated by Royal Charter.

Revisions

British Standards are updated by amendment or revision. Users of British Standards should make sure that they possess the latest amendments or editions.

It is the constant aim of BSI to improve the quality of our products and services. We would be grateful if anyone finding an inaccuracy or ambiguity while using this British Standard would inform the Secretary of the technical committee responsible, the identity of which can be found on the inside front cover. Tel: 020 8996 9000. Fax: 020 8996 7400.

BSI offers members an individual updating service called PLUS which ensures that subscribers automatically receive the latest editions of standards.

Buying standards

Orders for all BSI, international and foreign standards publications should be addressed to Customer Services. Tel: 020 8996 9001. Fax: 020 8996 7001. Standards are also available from the BSI website at <http://www.bsi-global.com>.

In response to orders for international standards, it is BSI policy to supply the BSI implementation of those that have been published as British Standards, unless otherwise requested.

Information on standards

BSI provides a wide range of information on national, European and international standards through its Library and its Technical Help to Exporters Service. Various BSI electronic information services are also available which give details on all its products and services. Contact the Information Centre. Tel: 020 8996 7111. Fax: 020 8996 7048.

Subscribing members of BSI are kept up to date with standards developments and receive substantial discounts on the purchase price of standards. For details of these and other benefits contact Membership Administration. Tel: 020 8996 7002. Fax: 020 8996 7001. Further information about BSI is available on the BSI website at <http://www.bsi-global.com>.

Copyright

Copyright subsists in all BSI publications. BSI also holds the copyright, in the UK, of the publications of the international standardization bodies. Except as permitted under the Copyright, Designs and Patents Act 1988 no extract may be reproduced, stored in a retrieval system or transmitted in any form or by any means – electronic, photocopying, recording or otherwise – without prior written permission from BSI.

This does not preclude the free use, in the course of implementing the standard, of necessary details such as symbols, and size, type or grade designations. If these details are to be used for any other purpose than implementation then the prior written permission of BSI must be obtained.

If permission is granted, the terms may include royalty payments or a licensing agreement. Details and advice can be obtained from the Copyright Manager. Tel: 020 8996 7070.

BSI
389 Chiswick High Road
London
W4 4AL