



BSI Standards Publication

# **Agricultural tractors — Rear-mounted power take-off types 1, 2, 3 and 4**

Part 1: General specifications, safety requirements, dimensions for master shield and clearance zone

**National foreword**

This British Standard is the UK implementation of ISO 500-1:2014. It supersedes BS ISO 500-1:2004 which is withdrawn.

The UK participation in its preparation was entrusted to Technical Committee AGE/6, Agricultural tractors and forestry machinery.

A list of organizations represented on this committee can be obtained on request to its secretary.

This publication does not purport to include all the necessary provisions of a contract. Users are responsible for its correct application.

© The British Standards Institution 2014. Published by BSI Standards Limited 2014

ISBN 978 0 580 74592 8

ICS 65.060.10

**Compliance with a British Standard cannot confer immunity from legal obligations.**

This British Standard was published under the authority of the Standards Policy and Strategy Committee on 30 April 2014.

**Amendments issued since publication**

Date	Text affected
------	---------------

---

INTERNATIONAL  
STANDARD

**ISO**  
**500-1**

Second edition  
2014-04-01

---

---

**Agricultural tractors — Rear-mounted  
power take-off types 1, 2, 3 and 4 —**

Part 1:  
**General specifications, safety  
requirements, dimensions for master  
shield and clearance zone**

*Tracteurs agricoles — Prises de force montées à l'arrière des types 1,  
2, 3 et 4 —*

*Partie 1: Spécifications générales, exigences de sécurité, dimensions  
du bouclier protecteur et de la zone de dégagement*



Reference number  
ISO 500-1:2014(E)

© ISO 2014



**COPYRIGHT PROTECTED DOCUMENT**

© ISO 2014

All rights reserved. Unless otherwise specified, no part of this publication may be reproduced or utilized otherwise in any form or by any means, electronic or mechanical, including photocopying, or posting on the internet or an intranet, without prior written permission. Permission can be requested from either ISO at the address below or ISO's member body in the country of the requester.

ISO copyright office  
Case postale 56 • CH-1211 Geneva 20  
Tel. + 41 22 749 01 11  
Fax + 41 22 749 09 47  
E-mail [copyright@iso.org](mailto:copyright@iso.org)  
Web [www.iso.org](http://www.iso.org)

Published in Switzerland

# Contents

	Page
Foreword .....	iv
<b>1 Scope .....</b>	<b>1</b>
<b>2 Normative references .....</b>	<b>1</b>
<b>3 Terms and definitions .....</b>	<b>1</b>
<b>4 Specifications .....</b>	<b>1</b>
<b>5 PTO-speed requirements for shiftable PTO .....</b>	<b>2</b>
<b>6 Safety requirements .....</b>	<b>2</b>
<b>7 Dimensions for tractor master shield aperture and clearance zone of PTO .....</b>	<b>2</b>
<b>Bibliography .....</b>	<b>5</b>

## Foreword

ISO (the International Organization for Standardization) is a worldwide federation of national standards bodies (ISO member bodies). The work of preparing International Standards is normally carried out through ISO technical committees. Each member body interested in a subject for which a technical committee has been established has the right to be represented on that committee. International organizations, governmental and non-governmental, in liaison with ISO, also take part in the work. ISO collaborates closely with the International Electrotechnical Commission (IEC) on all matters of electrotechnical standardization.

The procedures used to develop this document and those intended for its further maintenance are described in the ISO/IEC Directives, Part 1. In particular the different approval criteria needed for the different types of ISO documents should be noted. This document was drafted in accordance with the editorial rules of the ISO/IEC Directives, Part 2 (see [www.iso.org/directives](http://www.iso.org/directives)).

Attention is drawn to the possibility that some of the elements of this document may be the subject of patent rights. ISO shall not be held responsible for identifying any or all such patent rights. Details of any patent rights identified during the development of the document will be in the Introduction and/or on the ISO list of patent declarations received (see [www.iso.org/patents](http://www.iso.org/patents)).

Any trade name used in this document is information given for the convenience of users and does not constitute an endorsement.

For an explanation on the meaning of ISO specific terms and expressions related to conformity assessment, as well as information about ISO's adherence to the WTO principles in the Technical Barriers to Trade (TBT) see the following URL: [Foreword - Supplementary information](#)

The committee responsible for this document is ISO/TC 23, *Tractors and machinery for agriculture and forestry*, Subcommittee SC 4, *Tractors*.

This second edition cancels and replaces the first edition (ISO 500-1:2004), of which it constitutes a minor revision. It also incorporates the Corrigendum ISO 500-1:2004/Cor. 1:2005.

ISO 500 consists of the following parts, under the general title *Agricultural tractors — Rear-mounted power take-off types 1, 2, 3, and 4*:

- *Part 1: General specifications, safety requirements, dimensions for master shield and clearance zone*
- *Part 2: Narrow-track tractors, dimensions for master shield and clearance zone*
- *Part 3: Main PTO dimensions and spline dimensions, location of PTO*

# Agricultural tractors — Rear-mounted power take-off types 1, 2, 3 and 4 —

## Part 1: General specifications, safety requirements, dimensions for master shield and clearance zone

### 1 Scope

This part of ISO 500 gives general specifications, including speeds, safety requirements, the dimensions for master shield, and clearance zones for rear-mounted power take-offs (PTOs) of types 1, 2, 3, and 4 on agricultural tractors with a track setting of more than 1 150 mm (those with track setting width of 1 150 mm or less are covered in ISO 500-2).

### 2 Normative references

The following documents, in whole or in part, are normatively referenced in this document and are indispensable for its application. For dated references, only the edition cited applies. For undated references, the latest edition of the referenced document (including any amendments) applies.

ISO 5673-2, *Agricultural tractors and machinery — Power take-off drive shafts and power-input connection — Part 2: Specification for use of PTO drive shafts, and position and clearance of PTO drive line and PIC for various attachments*

ISO 6489 (all parts), *Agricultural vehicles — Mechanical connections between towed and towing vehicles*

### 3 Terms and definitions

For the purposes of this document, the following terms and definitions apply.

#### 3.1

**power take-off**

**PTO**

external shaft on the rear of the tractor to provide rotational power to implements

### 4 Specifications

4.1 The tractor rear power take-off (PTO) is classified into four types (see [Table 1](#)).

4.2 The direction of PTO rotation shall be clockwise when viewed from behind the tractor except when a ground-driven PTO is operated with the tractor in reverse direction.

4.3 The nominal PTO rated rotational frequency can be realized by one or more engine speed ranges.

**Table 1 — Characteristics of PTO types**

PTO type	Nominal diameter mm	Number and type of splines	Nominal PTO rated rotational frequency min <sup>-1</sup>	Recommended PTO power at rated engine speed <sup>a</sup> kW
1	35	6 straight splines	540	<65
			1 000 <sup>b</sup>	<110
2	35	21 involute splines	1 000	<130
3	45	20 involute splines	1 000	<300
4	57,5	22 involute splines	1 300	<450

<sup>a</sup> Determined in accordance with ISO 789-1 or OECD code 2.  
<sup>b</sup> This option is not available in North America.

## 5 PTO-speed requirements for shiftable PTO

**5.1** Should more than one ratio between the engine speed and the PTO rotation speed be provided, any change of ratio shall be indicated. In addition, specific design measures shall be taken to ensure that unintentional changes of ratio, particularly in changing to a higher rotational speed, cannot occur. This safety device shall operate each time the PTO is engaged.

**5.2** A means to indicate when the PTO is operating at which nominal speed shall be provided.

## 6 Safety requirements

**6.1** The PTO master shield, as shown in [Figure 1](#) and [Table 2](#), shall be supplied by the tractor manufacturer and shall be fixed to the tractor. If the same degree of safety protection is reached and the clearance zone is respected, equivalent protection devices (e.g. towing hook or clevis supports) can be used instead of the master shield. In this case, provisions shall be made for anchoring the restraining member of the PTO drive shaft guard.

**6.2** If necessary, the PTO master shield or a part of the shield can be movable without detachment from the tractor to facilitate attachment of the PTO drive shaft. The movable portion of the master shield shall be resistant to unintentional movement when in the operating position. The master shield can be made of flexible material.

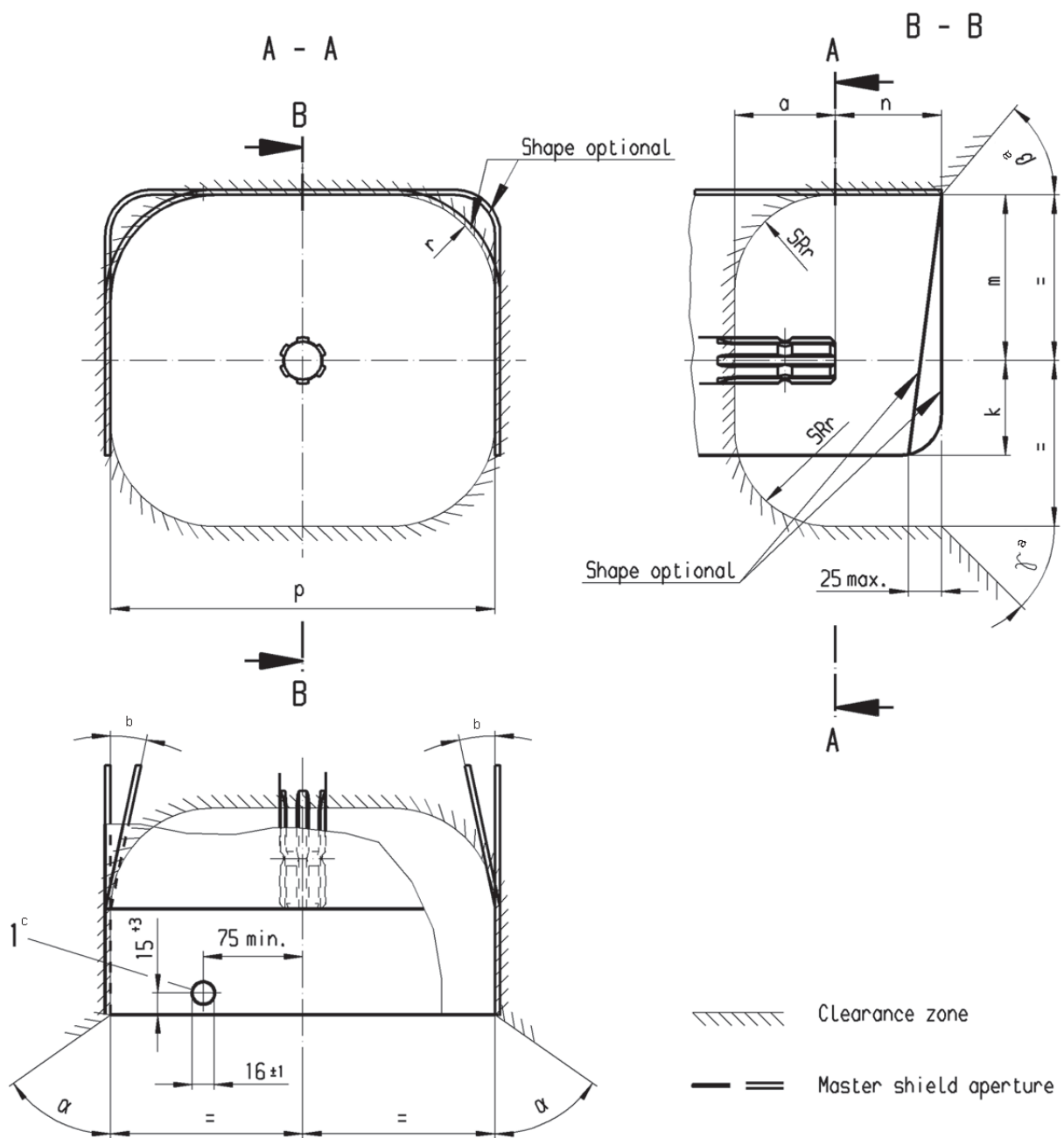
**6.3** If the PTO master shield can be used as a step, it shall withstand a vertical static load of 1 200 N without permanent deformation.

**6.4** An additional non-rotating casing which fully covers the PTO can also be supplied with the tractor to cover the PTO when the PTO is not in use.

## 7 Dimensions for tractor master shield aperture and clearance zone of PTO

The dimensions of the tractor master shield aperture and the clearance zone around the PTO shall be in accordance with [Figure 1](#) and [Table 2](#).





**Key**

- 1 Hole
- a The clearance can be restricted by movable and/or detachable devices. The clearance zone on towing vehicles shall be in accordance with ISO 6489 (all parts) and ISO 5673-2.
- b Angle optional under consideration of clearance zone.
- c For coupling up the restraining member of the PTO drive shaft guard preventing guard rotation.

**Figure 1 — Tractor master shield aperture and clearance zone around PTO**

**Table 2 — Tractor master shield controlling dimensions for aperture and clearance zone dimensions**

Dimension	PTO type			
	1	2	3 <sup>a</sup>	4 <sup>b</sup>
$a_{\min}$	80 mm	80 mm	95 mm	105 mm
$\alpha_{\min}$	60 °	60 °	60 °	60 °
$\beta_{\min}$	50 °	50 °	50 °	50 °
$\gamma_{\min}$	45 °	45 °	45 °	45 °
$SRr_{\max}$	76 mm	76 mm	90 mm	90 mm
$k_{\min}$	70 mm	70 mm	80 mm	80 mm
$m \pm 5$ mm	125 mm	125 mm	150 mm	150 mm
$n \pm 5$ mm	85 mm	85 mm	100 mm	100 mm
$p \pm 10$ mm	290 mm	290 mm	360 mm	360 mm
$r_{\max}$	76 mm	76 mm	90 mm	90 mm

<sup>a</sup> For tractors equipped with the PTO type 3 that can be adapted to also provide a PTO type 1 or 2, the master shield only needs to meet the specifications in [Figure 1](#) and [Table 2](#) for the PTO type 3.

<sup>b</sup> For tractors equipped with the PTO type 4 that can be adapted to also provide a PTO type 1, 2, or 3, the master shield only needs to meet the specifications in [Figure 1](#) and [Table 2](#) for the PTO type 4.

## Bibliography

- [1] ISO 789-1:1990, *Agricultural tractors — Test procedures — Part 1: Power tests for power take-off*
- [2] OECD code 2, *OECD standard code for the official testing of agricultural and forestry tractor performance*





# British Standards Institution (BSI)

BSI is the national body responsible for preparing British Standards and other standards-related publications, information and services.

BSI is incorporated by Royal Charter. British Standards and other standardization products are published by BSI Standards Limited.

## About us

We bring together business, industry, government, consumers, innovators and others to shape their combined experience and expertise into standards-based solutions.

The knowledge embodied in our standards has been carefully assembled in a dependable format and refined through our open consultation process. Organizations of all sizes and across all sectors choose standards to help them achieve their goals.

## Information on standards

We can provide you with the knowledge that your organization needs to succeed. Find out more about British Standards by visiting our website at [bsigroup.com/standards](http://bsigroup.com/standards) or contacting our Customer Services team or Knowledge Centre.

## Buying standards

You can buy and download PDF versions of BSI publications, including British and adopted European and international standards, through our website at [bsigroup.com/shop](http://bsigroup.com/shop), where hard copies can also be purchased.

If you need international and foreign standards from other Standards Development Organizations, hard copies can be ordered from our Customer Services team.

## Subscriptions

Our range of subscription services are designed to make using standards easier for you. For further information on our subscription products go to [bsigroup.com/subscriptions](http://bsigroup.com/subscriptions).

With **British Standards Online (BSOL)** you'll have instant access to over 55,000 British and adopted European and international standards from your desktop. It's available 24/7 and is refreshed daily so you'll always be up to date.

You can keep in touch with standards developments and receive substantial discounts on the purchase price of standards, both in single copy and subscription format, by becoming a **BSI Subscribing Member**.

**PLUS** is an updating service exclusive to BSI Subscribing Members. You will automatically receive the latest hard copy of your standards when they're revised or replaced.

To find out more about becoming a BSI Subscribing Member and the benefits of membership, please visit [bsigroup.com/shop](http://bsigroup.com/shop).

With a **Multi-User Network Licence (MUNL)** you are able to host standards publications on your intranet. Licences can cover as few or as many users as you wish. With updates supplied as soon as they're available, you can be sure your documentation is current. For further information, email [bsmusales@bsigroup.com](mailto:bsmusales@bsigroup.com).

## BSI Group Headquarters

389 Chiswick High Road London W4 4AL UK

## Revisions

Our British Standards and other publications are updated by amendment or revision.

We continually improve the quality of our products and services to benefit your business. If you find an inaccuracy or ambiguity within a British Standard or other BSI publication please inform the Knowledge Centre.

## Copyright

All the data, software and documentation set out in all British Standards and other BSI publications are the property of and copyrighted by BSI, or some person or entity that owns copyright in the information used (such as the international standardization bodies) and has formally licensed such information to BSI for commercial publication and use. Except as permitted under the Copyright, Designs and Patents Act 1988 no extract may be reproduced, stored in a retrieval system or transmitted in any form or by any means – electronic, photocopying, recording or otherwise – without prior written permission from BSI. Details and advice can be obtained from the Copyright & Licensing Department.

## Useful Contacts:

### Customer Services

**Tel:** +44 845 086 9001

**Email (orders):** [orders@bsigroup.com](mailto:orders@bsigroup.com)

**Email (enquiries):** [cservices@bsigroup.com](mailto:cservices@bsigroup.com)

### Subscriptions

**Tel:** +44 845 086 9001

**Email:** [subscriptions@bsigroup.com](mailto:subscriptions@bsigroup.com)

### Knowledge Centre

**Tel:** +44 20 8996 7004

**Email:** [knowledgecentre@bsigroup.com](mailto:knowledgecentre@bsigroup.com)

### Copyright & Licensing

**Tel:** +44 20 8996 7070

**Email:** [copyright@bsigroup.com](mailto:copyright@bsigroup.com)



...making excellence a habit.™