

# Reliability growth — Stress testing for early failures in unique complex systems

ICS 03.120.01; 21.020; 29.020

## National foreword

This British Standard is the UK implementation of EN 62429:2008. It is identical to IEC 62429:2007.

The UK participation in its preparation was entrusted by Technical Committee DS/1, Dependability and terotechnology, to Subcommittee DS/1/1, Dependability.

A list of organizations represented on this committee can be obtained on request to its secretary.

This publication does not purport to include all the necessary provisions of a contract. Users are responsible for its correct application.

**Compliance with a British Standard cannot confer immunity from legal obligations.**

This British Standard was published under the authority of the Standards Policy and Strategy Committee on 31 July 2008

© BSI 2008

ISBN 978 0 580 56825 1

### Amendments/corrigenda issued since publication

Date	Comments

English version

**Reliability growth -  
Stress testing for early failures in unique complex systems  
(IEC 62429:2007)**

Croissance de fiabilité -  
Essais de contraintes pour révéler  
les défaillances précoces  
d'un système complexe et unique  
(CEI 62429:2007)

Zuverlässigkeitswachstum -  
Beanspruchungsprüfung auf Frühausfälle  
in einzelnen komplexen Systemen  
(IEC 62429:2007)

This European Standard was approved by CENELEC on 2008-03-01. CENELEC members are bound to comply with the CEN/CENELEC Internal Regulations which stipulate the conditions for giving this European Standard the status of a national standard without any alteration.

Up-to-date lists and bibliographical references concerning such national standards may be obtained on application to the Central Secretariat or to any CENELEC member.

This European Standard exists in three official versions (English, French, German). A version in any other language made by translation under the responsibility of a CENELEC member into its own language and notified to the Central Secretariat has the same status as the official versions.

CENELEC members are the national electrotechnical committees of Austria, Belgium, Bulgaria, Cyprus, the Czech Republic, Denmark, Estonia, Finland, France, Germany, Greece, Hungary, Iceland, Ireland, Italy, Latvia, Lithuania, Luxembourg, Malta, the Netherlands, Norway, Poland, Portugal, Romania, Slovakia, Slovenia, Spain, Sweden, Switzerland and the United Kingdom.

**CENELEC**

European Committee for Electrotechnical Standardization  
Comité Européen de Normalisation Electrotechnique  
Europäisches Komitee für Elektrotechnische Normung

**Central Secretariat: rue de Stassart 35, B - 1050 Brussels**

## **Foreword**

The text of document 56/1232/FDIS, future edition 1 of IEC 62429, prepared by IEC TC 56, Dependability, was submitted to the IEC-CENELEC parallel vote and was approved by CENELEC as EN 62429 on 2008-03-01.

The following dates were fixed:

- latest date by which the EN has to be implemented  
at national level by publication of an identical  
national standard or by endorsement (dop) 2008-12-01
- latest date by which the national standards conflicting  
with the EN have to be withdrawn (dow) 2011-03-01

Annex ZA has been added by CENELEC.

---

## **Endorsement notice**

The text of the International Standard IEC 62429:2007 was approved by CENELEC as a European Standard without any modification.

---

## CONTENTS

1	Scope .....	4
2	Justification of measurement .....	4
3	Apparatus .....	5
3.1	General .....	5
3.2	Light source .....	5
3.3	Polarizer and analyzer .....	5
3.4	Sample fibre preparation .....	5
3.5	Variable phase compensator .....	5
3.6	Optical intensity detection .....	6
3.7	Data acquisition .....	6
4	Data analysis and formula .....	6
4.1	General .....	6
4.2	1-D stress profile for a fibre with a cylindrically symmetric structure .....	7
4.3	2-D stress profile for a fibre with a cylindrically non-symmetric structure .....	8
5	Measurement procedure .....	11
5.1	Alignment of polarizer and analyzer .....	11
5.2	Fibre mounting .....	11
5.3	Taking transmitted intensity data $I(y, \theta)$ .....	11
5.4	Calculation of 1-D stress profile for a fibre with a cylindrically symmetric structure .....	11
5.5	Calculation of 2-D stress profile for a fibre with a cylindrically non-symmetric structure .....	11
6	Documentation .....	11
6.1	Information to be reported for each measurement .....	11
6.2	Information that should be available upon request .....	12
	Annex ZA (normative) Normative references to international publications with their corresponding European publications .....	15
	Bibliography .....	13
	Figure 1 – Polarisoscopic phase retardation measurement setup for an optical fibre .....	5
	Figure 2 – Measured transmission intensity as a function of fibre radius and external phase .....	6
	Figure 3 – Propagation of laser light across the fibre cross-section .....	7
	Figure 4 – Stress profile for a fibre with depressed inner cladding and jacketed tube .....	8
	Figure 5 – Examples of projected phase retardation measurement $\delta(y)$ for a PM fibre as a function of fibre radius $y$ when the projected angle $\alpha$ is $0^\circ$ , $45^\circ$ , $90^\circ$ , and $135^\circ$ .....	9
	Figure 6 – Measured projected phases $\delta(y, \alpha)$ of a PM fibre for various projected angles as a function of fibre radius .....	10
	Figure 7 – Calculated 2-D stress profile of a PM fibre .....	10

## GUIDANCE FOR RESIDUAL STRESS MEASUREMENT OF OPTICAL FIBRE

### 1 Scope

The measurement of residual stress distribution in an uncoated glass optical fibre is considered to be important as it affects critical fibre parameters such as refractive index, intrinsic polarization mode dispersion, mode field diameter and dispersion. The optical polarimetric method is a well-established technique to measure the residual stress of an optical material. This technical report describes a transverse polarimetric method to measure the residual stress profile of any type of optical fibre.

The principle and detailed procedure for measuring the optical transverse stress profile of a fibre, which is cylindrically symmetric, is described in detail. It is based on a polariscope, which is constructed with a fixed polarizer, a quarter-wave plate and an analyzer. An optical tomographic technique is also described for measuring the stress profile of a fibre with a cylindrically non-symmetric structure.

### 2 Justification of measurement

Residual stress in an optical fibre is induced by the combination of the fibre construction and the drawing process. The stress information is important because it affects many important parameters of an optical fibre due to the following reasons.

- Temperature dependent changes of fibre parameters are larger for a fibre with larger residual stress, and these are responsible for the statistical behaviour of polarization mode dispersion (PMD) changes in deployed fibre links. (See references [10-12].)<sup>1)</sup>
- The variation of important fibre parameters such as chromatic dispersion, mode field diameter, PMD depends on the intrinsic residual stress of an optical fibre. (See references [13-17].)
- The asymmetric residual stress profile of a fibre causes fibre curl, which affects cleaving quality for an optical fibre ribbon.
- The asymmetric residual stress of a fibre is a major cause of the intrinsic PMD of an optical fibre. (See references [18-20].)
- Excessive residual stress can lead to core cracking that might be seen in, for example, the preparation of the ends for connectors.
- The design of polarization retaining fibres normally involves inducing a non-symmetric stress field. This measurement can be used to confirm these designs.

Much progress has been made in measuring the residual stress profile of an optical fibre (see references [1-9]) such that spatial resolution can be as small as 0,6  $\mu$  and accuracy in measuring stress can be as low as 0,4 MPa.

Depending on the application, either one- or two-dimensional stress data may be needed. This document describes methods by measuring the polarization rotation of a transversely exposed laser light across a fibre cross-section using a polarimetric method.

---

<sup>1)</sup> Figures in square brackets refer to the Bibliography.

### 3 Apparatus

#### 3.1 General

An optical transverse phase retardation measurement method is used to determine the residual stresses in a fibre. Figure 1 shows a simple polariscopic phase retardation measurement setup consisting of a polarizer, fibre sample, Babinet variable phase compensator, and an analyzer. Stressed material shows stress-induced birefringence for light propagating through the medium. By measuring the polarization dependent phase retardation of light transmitted through a sample, the stress can be measured.

#### 3.2 Light source

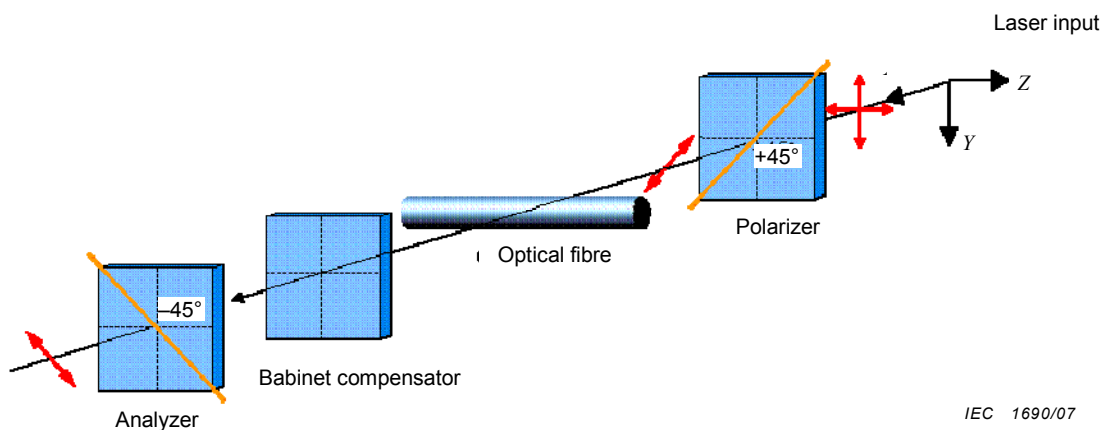
The light source shall be a laser with a specified optical wavelength and narrow optical spectrum bandwidth (maximum 2 nm at FWHM [full width at half maximum]). A collimated laser light source is recommended. When a laser is used, a rotating diffuser is recommended in order to remove coherent interference effects.

#### 3.3 Polarizer and analyzer

The polarizer and the analyzer shall have a minimum polarization dependent transmission contrast of 1:200. The transmission angles of the polarizer and the analyzer are set perpendicular with each other within 0,1-degree accuracy.

#### 3.4 Sample fibre preparation

The fibre sample shall be a few centimetres long. The jacket or plastic coating on the sample shall be removed. The prepared sample is placed between the polarizer and the analyzer. Immerse the sample in an index matching gel or fluid. The refractive index difference between the cladding material of the fibre and the index matching material shall be less than 0,005. The angle between the fibre axis and the polarizer or the analyzer shall be 45° within 0,1-degree accuracy.



**Figure 1 – Polariscopic phase retardation measurement setup for an optical fibre**

For measuring a two-dimensional stress profile, a fixture that holds the fibre on a constant axis at the holding position and allows the fibre to be rotated through 180° is required. The fixture is required in order to be rotated with a motorized stage with an accuracy of 0,1°.

#### 3.5 Variable phase compensator

A Babinet variable phase compensator is placed just after a fibre sample to add an external phase term, which is used for an accurate phase retardation measurement. If the fibre sample has non-zero axial stress components, it acts as a phase retarder due to stress-induced

birefringence. Without a fibre sample and the Babinet phase compensator, no light can pass through the analyzer.

### 3.6 Optical intensity detection

An optical intensity detection system is needed to detect the transmitted light intensity after the optical analyzer shown in Figure 1. Such a device may consist of a single optical detector with a small aperture size in the order of a few microns combined with a motorized linear scanning system. A detector array may be used to provide a more precise location of the deflections than might be obtained by a single detector. Such a system might include a detector array or a CCD with a frame grabber.

### 3.7 Data acquisition

A computer is recommended to provide motion control, acquire data and perform computations.

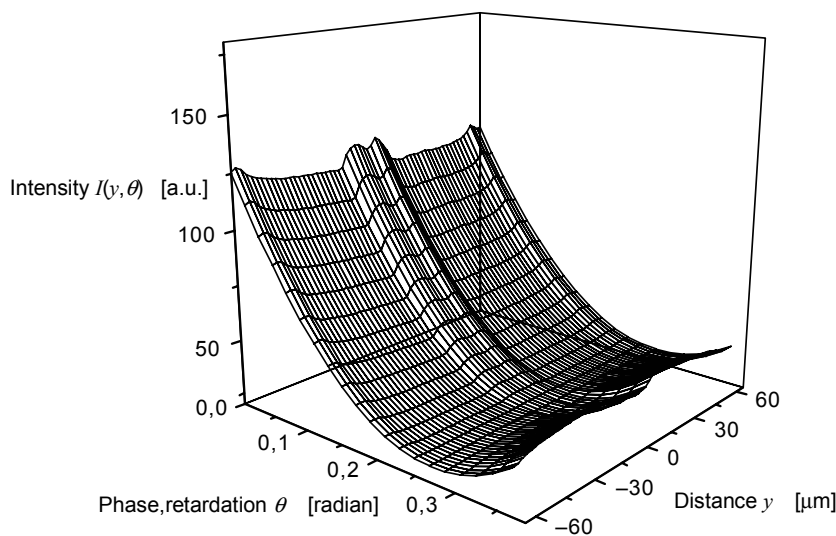
## 4 Data analysis and formula

### 4.1 General

The transmitted optical intensity  $I(y)$  as a function of the transverse distance of a fibre  $y$ , can be written as:

$$I(y, \theta) = I_o \sin^2\{(\delta(y) + \theta)/2\}, \quad (1)$$

where  $I_o$  is background intensity,  $\theta$  is the external phase retardation term from the Babinet compensator and  $\delta(y)$  is the phase shift induced by linear birefringence due to the stress profile of the fibre sample located between the polarizer and the analyzer. Figure 2 shows typical sine square intensity profiles as a function of  $\theta$  for each ray displaced  $y$  value from the centre of the fibre sample.



IEC 1691/07

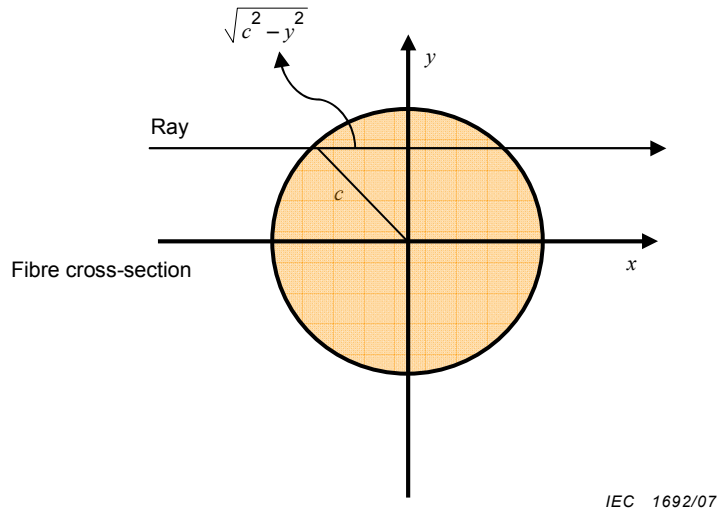
**Figure 2 – Measured transmission intensity as a function of fibre radius and external phase**



As illustrated in Figure 3, laser light passes through the fibre's cross-section along the  $x$  axis and  $c$  is the outer radius of a fibre. For each transversely propagating ray through the cross-section its phase  $\delta(y)$  can be expressed as:

$$\begin{aligned}\delta(y) &= \frac{2\pi}{\lambda} \int_{-\sqrt{c^2-y^2}}^{\sqrt{c^2-y^2}} (n_z - n_y) dx \\ &= \frac{2\pi}{\lambda} \int_{-\sqrt{c^2-y^2}}^{\sqrt{c^2-y^2}} C \sigma_z dx\end{aligned}\quad (2)$$

where  $n_z$  is the refractive index along the fibre axis  $z$ ,  $n_y$  is the refractive index along the transverse axis  $y$ ,  $c$  is the outer radius of a fibre,  $\lambda$  is the wavelength of a light source and  $\sigma_z$  is the axial stress of a fibre. Here,  $C$  is the stress optic coefficient of silica given as  $C = 35,5 \times 10^{-13} \text{ Pa}^{-1}$  [1].



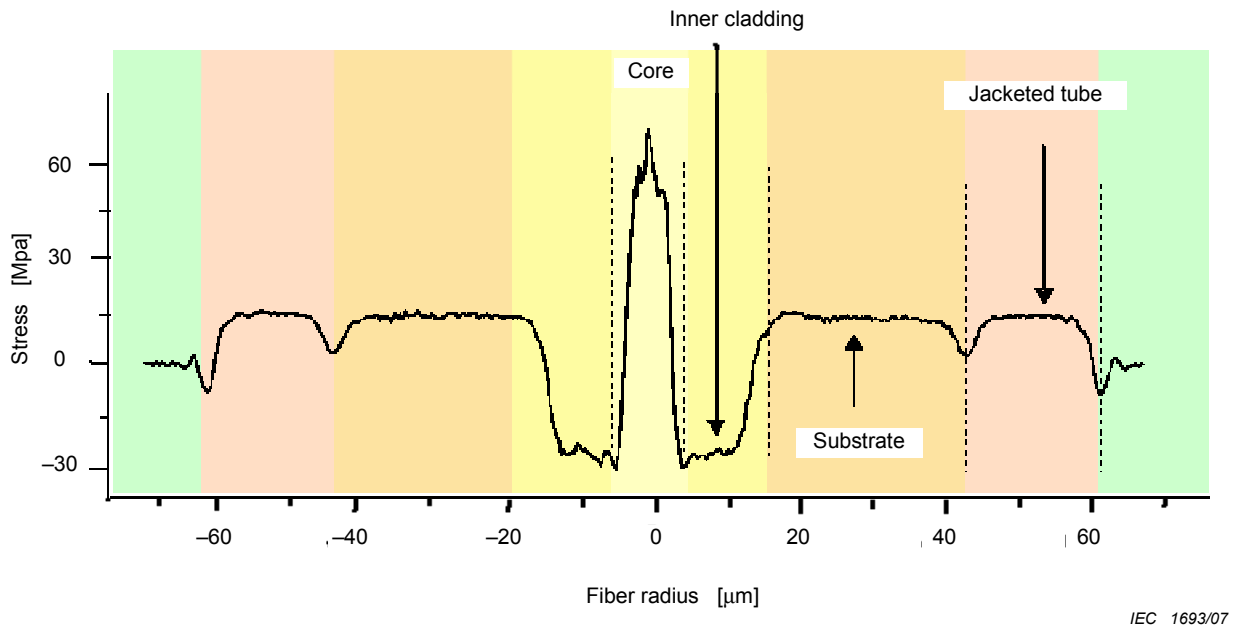
**Figure 3 – Propagation of laser light across the fibre cross-section.**

#### 4.2 1-D stress profile for a fibre with a cylindrically symmetric structure

By using the Abel transformation [1-5], the stress profile  $\sigma_z(r)$  of an axially symmetric fibre can be obtained as:

$$\sigma_z(r) = \frac{-\lambda}{2\pi^2 C} \int_r^c \frac{d\delta(y)/dy}{\sqrt{y^2 - r^2}} dy \quad (3)$$

Figure 4 shows a typical calculated stress profile for a jacketed depressed inner cladding fibre. It shows large stress peaks for the boundary between the substrate and the jacketing tube as well as the boundary between the core and inner cladding.



**Figure 4 – Stress profile for a fibre with depressed inner cladding and jacketed tube**

#### 4.3 2-D stress profile for a fibre with a cylindrically non-symmetric structure

For a fibre with a non-axially symmetric stress distribution such as a polarization maintaining (PM) fibre, a two-dimensional (2-D) cross-sectional stress profile can be determined from one or more projected phase profiles with different projection angles  $\alpha$  between  $0^\circ$  and  $180^\circ$  [6,7].

Figure 5 illustrates an example of the measurement procedure of projected phase retardation measurements for a PM fibre. The PM fibre is rotated along the fibre axis by  $45^\circ$  for each measurement. The phase retardation  $\delta(y, \alpha)$  is measured as a function of the fibre radius  $y$  for each projection angle  $\alpha$ .

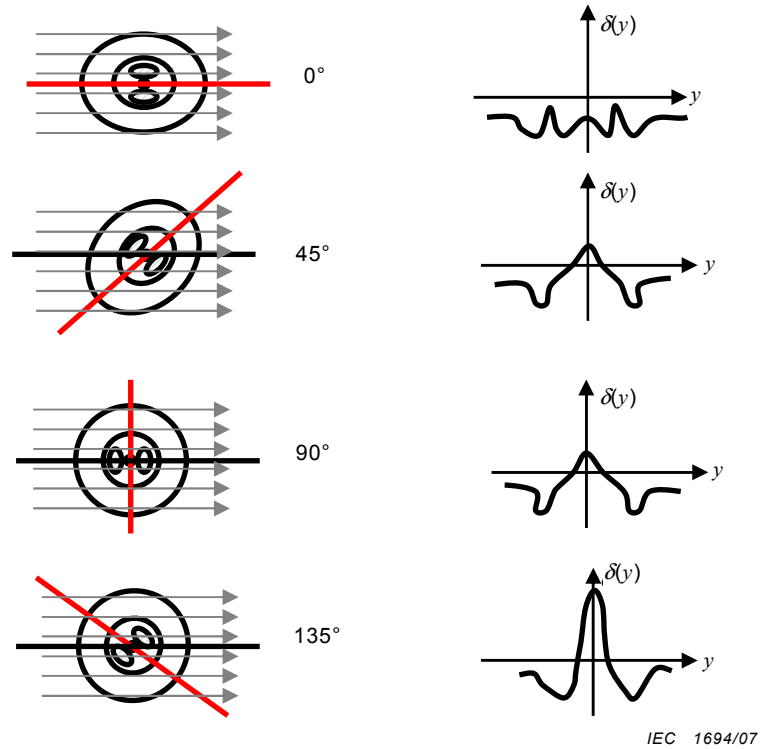
For a certain projection angle  $\alpha$ , the projected phase retardation profile can be written as a line integral:

$$\delta(y, \alpha) = 2\pi/\lambda \int [n_z - n_y] dx \quad (4)$$

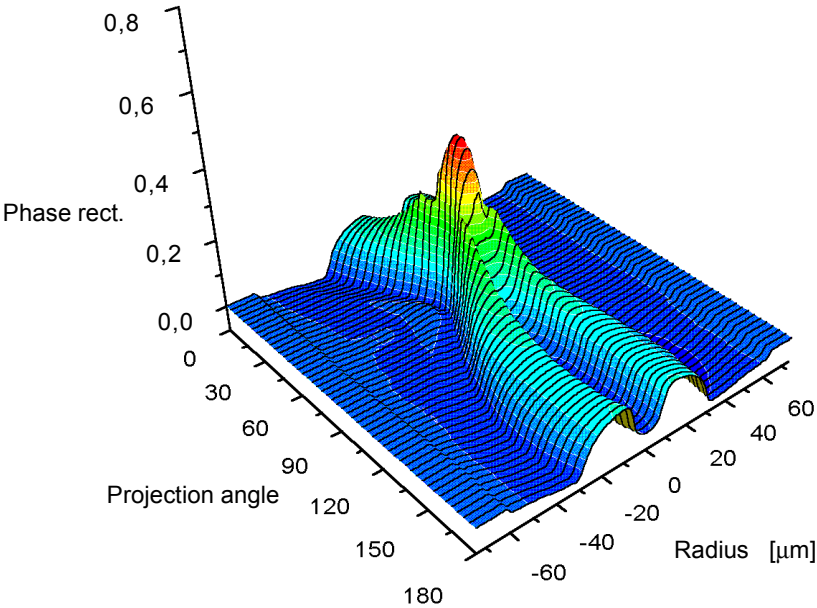
Figure 6 shows projected phases for fifty different projection angles between  $0^\circ$  and  $180^\circ$  for a PM fibre. Such phase retardation profiles with many different projection angles form a 2-D projected phase retardation profile and are used to calculate the 2-D axial stress distribution  $\sigma_{zz}(x, y)$  of a fibre with non-axially symmetric structure by using the inverse Radon transformation [8, 9]:

$$\sigma_{zz}(x, y) = \lambda/2\pi C \cdot \text{iradon}\{\delta(y, \alpha)\} \quad (5)$$

where  $iradon\{\}$  represents the inverse radon transformation. The actual reconstruction of cross-sectional stress data is obtained by using the filtered back-projection algorithm that is explained in [8] and [9]. Figure 7 shows an example of a calculated 2-D stress profile  $\sigma_{zz}(x, y)$  for a PM fibre.

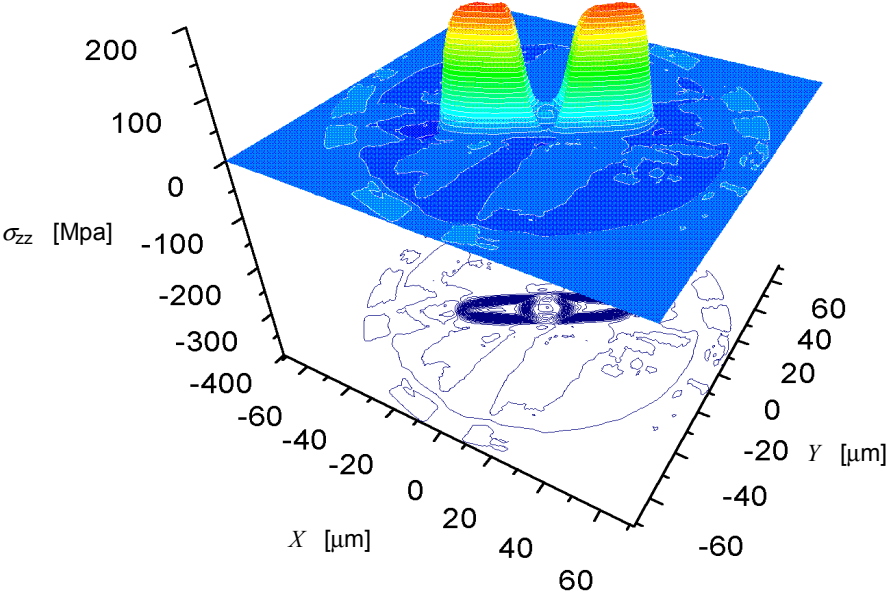


**Figure 5 – Examples of projected phase retardation measurement  $\delta(y)$  for a PM fibre as a function of fibre radius  $y$  when the projected angle  $\alpha$  is  $0^\circ$ ,  $45^\circ$ ,  $90^\circ$ , and  $135^\circ$**



IEC 1695/07

Figure 6 – Measured projected phases  $\delta(y, \alpha)$  of a PM fibre for various projected angles as a function of fibre radius



IEC 1696/07

Figure 7 – Calculated 2-D stress profile of a PM fibre

## 5 Measurement procedure

### 5.1 Alignment of polarizer and analyzer

Without a fibre sample in the setup, rotate the axis of the analyzer in such a way that minimum light can pass through the analyzer. This makes the angle between the polarizer and the analyzer  $90^\circ$ . Place a Babinet compensator between the polarizer and the analyzer. Calibrate the compensating angle  $\theta$  of the Babinet compensator by making the transmitted light a minimum when  $\theta = 0$ .

### 5.2 Fibre mounting

Prepare a fibre sample with a minimum length of 10 mm. Strip the plastic coating with a solvent, note that mechanical stripping or thermal stripping is not recommended because of the stress changes they may cause. Mount the bare fibre in the holding fixture and straighten it without applying any force. Sandwich the fibre between two thin glass plates with an index matching fluid or gel between them, note that the plates must be parallel. Place the sample between the Babinet compensator and the polarizer.

### 5.3 Taking transmitted intensity data $I(y, \theta)$

For a given external phase retardation angle  $\theta$  from the Babinet compensator, obtain a transmitted optical intensity  $I(y, \theta)$  as a function of the transverse distance of a fibre  $y$ , which corresponds to  $I(y, \theta) = I_o \sin^2\{(\delta(y) + \theta)/2\}$ . Repeat this transmitted optical intensity measurement while scanning the external phase retardation angles  $\theta$  such that sine square intensity function  $I(y, \theta)$  can be obtained as a function of  $\theta$  for a given radius position  $y$ . The external phase retardation angle  $\theta$  needs to be scanned at least for  $30^\circ$  with a step size of  $1^\circ$  to reduce errors during the curve fitting process. The scanning range of the external phase retardation  $\theta$  needs to be carefully chosen so that the transmitted intensity data  $I(y, \theta)$  has at least one maximum or minimum point of a sine square function.

### 5.4 Calculation of 1-D stress profile for a fibre with a cylindrically symmetric structure

For each transverse position  $y$ , calculate the phase retardation  $\delta(y)$  by fitting the  $I(y, \theta) = I_o \sin^2\{(\delta(y) + \theta)/2\}$  curve with a sine square function by using a least square curve fitting method. The stress profile of a fibre  $\sigma_z(r)$  can be calculated from  $\delta(y)$  using equation (3).

### 5.5 Calculation of 2-D stress profile for a fibre with a cylindrically non-symmetric structure

For a fibre with a non-axially symmetric stress distribution, measure a series of phase retardations  $\delta(y, \alpha)$  in equation (4) for many different projection angles  $\alpha$  between  $0^\circ$  and  $180^\circ$ . At least 20 different projected phase retardation measurements  $\delta(y, \alpha)$  with regularly spaced projection angle  $\alpha$  need to be measured. A sample fibre should be rotated along the fibre axis with a computer controlled motorized rotating stage. Using equation (5), obtain the 2-D stress profile of the fibre  $\sigma_{zz}(x, y)$ .

## 6 Documentation

### 6.1 Information to be reported for each measurement

- 1) Identification of each test specimen
- 2) Date of the measurement

- 3) Wavelength of the light source
- 4) 1-D fibre stress profile  $\sigma_z(r)$
- 5) Optional 2-D fibre stress profile  $\sigma_{zz}(x, y)$

#### **6.2 Information that should be available upon request**

- 1) Description of the measurement method used
- 2) Description of the measurement equipment, including: light source, polarizer and analyzer, Babinet compensator, imaging lens, detection device
- 3) Spatial resolution and stress resolution of the measurement equipment
- 4) Date and results for the most recent instrument calibration
- 5) Data on measurement reproducibility

## Bibliography

- [1] CHU, P. L. and WHITBREAD, T. Measurement of stresses in optical fibres and preforms. *Appl. Opt.*, 1982, 21, 4241-4245.
- [2] PARK, Y., OH, K., PAEK, U.C., KIM, D.Y., KURKJIAN, C. R. Residual Stresses in a Doubly Clad Fibre with Depressed Inner Cladding (DIC). *J. of Lightwave Technol.*, Oct. 1999, 17(10), 1823-1834.
- [3] PARK, Y., AHN, T.-J., KIM, Y.H., HAN, W.-T, PAEK, U.C., KIM, D.Y. Measurement method for profiling the residual stress and the strain-optic coefficient of an optical fibre. *Appl. Optics*, Jan. 2002, 41(1).
- [4] KIM, B.H., PARK, Y., AHN, T.-J., KIM, D.Y., CHUNG, Y., PAEK, U.C., HAN, W.-T. Residual stress relaxation in the core of optical fibre by CO<sub>2</sub> laser irradiation. *Opt. Lett.*, Nov. 2001, 26(21) pp.1657-1659.
- [5] KIM, B.H., PARK, Y., KIM, D.Y. PAEK, U.C., HAN, W.-T. Observation and analysis of residual stress development due to OH impurity in Optical fibres. *Optics Letters*, May 15, 2002, 27(10).
- [6] PARK, Y., PAEK, U.-C. and KIM, D.Y. Complete determination of the stress tensor of a polarization-maintaining fibre by photoelastic tomography. *Opt. Lett*, July,15, 2002, 27(14), pp.1217-1219.
- [7] PARK, Y., PAEK, U.-C. and KIM, D.Y. Determination of stress-induced intrinsic birefringence in a single mode fibre by measurement of 2-D stress profile. *Opt. Lett*, August 1, 2002, 27(15), pp. 1291-1293,.
- [8] KAK, A. C. and SLANEY, M. *Principles of Computerized Tomographic Imaging*. (The SIAM, Philadelphia, 2001), Chap. 3.
- [9] ABE, T., MITSUNAGA, Y. and KOGA, H. Photoelastic computer tomography: a novel measurement method for axial residual stress profile in optical fibres. *J. Opt. Soc. Am.*, 1986, A 3, pp. 133-138.
- [10] VARNHAM, M. P., POOLE, S. B., PAYNE, D. N. Thermal stress measurements in optical fiber preforms using preform-profiling techniques. *Electronics letters*, December, 1984, Vol. 20, No. 25, pp. 1034-1035.
- [11] PARK, Y., PAEK, U.-C., KIM, D.Y. Determination of stress induced intrinsic birefringence in a single mode fiber by measurement of the two dimensional stress profile. *Optics letters*, Vol. 27, August 2002, No. 15, pp.1291-1293.
- [12] DAHMANI, Faiz, SCHMID, Ansgar W., LAMBROPOULOS, John C., BURNS, Stephen. Dependence of birefringence and residual stress near laser induced cracks in fused silica on laser fluence and on laser pulse number. *Applied Optics*, November 1998, Vol. 37, No. 33, pp. 7772-7784.

- [13] CHAKRAVARTHY, Srinath S., CHIU, Wilson K. S. Failure of optical fibers with thin hard coatings. *Journal of Lightwave Technology*, , March 2006, Vol. 24, No. 3, pp. 1356-1363.
- [14] LI, Ming-Jun, CHEN, Xin, NOLAN, Daniel A. Effects of residual stress on polarization mode dispersion of fibers made with different types of spinning. *Optics letters*, Vol. 29, March 2004, No. 5, pp. 448-450.
- [15] LIGNIE, Marc C. de, NAGEL, Huub G. J., van DEVENTER, M. Oskar. Large polarization mode dispersion in fiber optic cable. *Journal of Lightwave Technology*, August 1994, Vol. 12, No. 8, pp. 1325-1329.
- [16] GALTAROSSA, Andrea, SOMEDA, Carlo G., TOMMASINI, Andrea Stress birefringence in fiber ribbons. *Technical Digest*, 1997, ThF7, OFC.
- [17] NELSON, L. E., JOPSON, R. M., KOGELNIK, H. Polarization Mode Dispersion in optical fibers. *Journal of Lightwave Technology*, October 1996, Vol. 14, No. 10, pp. 214-215.
- [18] URBANCZYK, Waclaw, MARTYNKIEN, Tadeusz, BOCK, Wojtek J. Dispersion effects in elliptical core highly birefringent fibers. *Applied Optics*, April 2001, Vol. 40. No. 12, pp. 1911-1920.
- [19] SHIN, I. H., KIM, B. H., HAN, W.-T., KIM, D. Y. Measurements of non-elastic frozen-in residual stress near the cleaved end of an optical fiber by the inverse linear polarizing method. *Photonics West*, 2006, Vol. 6116, No. 31.
- [20] PARK, Y., PAEK, U.-C., KIM, D. Y. Characterization of a stress-applied polarization maintaining fiber through photoelastic tomography. *Journal of Lightwave Technology*, April 2003, Vol. 21, No. 4, 997-1004.

---

IEC 60300-1	NOTE Harmonized as EN 60300-1:2003 (not modified).
IEC 60300-2	NOTE Harmonized as EN 60300-2:2004 (not modified).
IEC 60300-3-1	NOTE Harmonized as EN 60300-3-1:2004 (not modified).
IEC 60706-5	NOTE Harmonized as EN 60706-5:2007 (not modified).
IEC 60812	NOTE Harmonized as EN 60812:2006 (not modified).
IEC 61014	NOTE Harmonized as EN 61014:2003 (not modified).
IEC 61025	NOTE Harmonized as EN 61025:2007 (not modified).
IEC 61078	NOTE Harmonized as EN 61078:2006 (not modified).
IEC 61160	NOTE Harmonized as EN 61160:2005 (not modified).
ISO 9000	NOTE Harmonized as EN ISO 9000:2005 (not modified).



**Annex ZA**  
(normative)

**Normative references to international publications  
with their corresponding European publications**

The following referenced documents are indispensable for the application of this document. For dated references, only the edition cited applies. For undated references, the latest edition of the referenced document (including any amendments) applies.

NOTE When an international publication has been modified by common modifications, indicated by (mod), the relevant EN/HD applies.

<u>Publication</u>	<u>Year</u>	<u>Title</u>	<u>EN/HD</u>	<u>Year</u>
IEC 60050-191	1990	International Electrotechnical Vocabulary (IEV) - Chapter 191: Dependability and quality of service	-	-
IEC 60300-3-5	- <sup>1)</sup>	Dependability management - Part 3-5: Application guide - Reliability test conditions and statistical test principles	-	-
IEC 60605-2	- <sup>1)</sup>	Equipment reliability testing - Part 2: Design of test cycles	-	-
IEC 61163-1	2006	Reliability stress screening - Part 1: Repairable assemblies manufactured in lots	EN 61163-1	2006
IEC 61163-2	- <sup>1)</sup>	Reliability stress screening - Part 2: Electronic components	-	-
IEC 61164	- <sup>1)</sup>	Reliability growth - Statistical test and estimation methods	EN 61164	2004 <sup>2)</sup>
IEC 61710	- <sup>1)</sup>	Power law model - Goodness-of-fit tests and estimation methods	-	-

---

<sup>1)</sup> Undated reference.

<sup>2)</sup> Valid edition at date of issue.

---

---

## British Standards Institute (BSI)

BSI is the independent national body responsible for preparing British Standards. It presents the UK view on standards in Europe and at the international level. It is incorporated by Royal Charter.

### Revisions

British Standards are updated by amendment or revision. Users of British Standards should make sure that they possess the latest amendments or editions.

It is the constant aim of BSI to improve the quality of our products and services. We would be grateful if anyone finding an inaccuracy or ambiguity while using this British Standard would inform the Secretary of the technical committee responsible, the identity of which can be found on the inside front cover.  
Tel: +44 (0)20 8996 9000 Fax: +44 (0)20 8996 7400

BSI offers members an individual updating service called PLUS which ensures that subscribers automatically receive the latest editions of standards.

### Buying standards

Orders for all BSI, international and foreign standards publications should be addressed to Customer Services.

Tel: +44 (0)20 8996 9001 Fax: +44 (0)20 8996 7001

Email: [orders@bsigroup.com](mailto:orders@bsigroup.com)

You may also buy directly using a debit/credit card from the BSI Shop on the Website <http://www.bsigroup.com/shop>.

In response to orders for international standards, it is BSI policy to supply the BSI implementation of those that have been published as British Standards, unless otherwise requested.

### Information on standards

BSI provides a wide range of information on national, European and international standards through its Library and its Technical Help to Exporters Service. Various BSI electronic information services are also available which give details on all its products and services. Contact the Information Centre.

Tel: +44 (0)20 8996 7111 Fax: +44 (0)20 8996 7048

Email: [info@bsigroup.com](mailto:info@bsigroup.com)

Subscribing members of BSI are kept up to date with standards developments and receive substantial discounts on the purchase price of standards. For details of these and other benefits contact Membership Administration.

Tel: +44 (0)20 8996 7002 Fax: +44 (0)20 8996 7001

Email: [membership@bsigroup.com](mailto:membership@bsigroup.com)

Information regarding online access to British Standards via British Standards Online can be found at <http://www.bsigroup.com/BSOL>.

Further information about BSI is available on the BSI website at <http://www.bsigroup.com>.

### Copyright

Copyright subsists in all BSI publications. BSI also holds the copyright, in the UK, of the publications of the international standardization bodies. Except as permitted under the Copyright, Designs and Patents Act 1988 no extract may be reproduced, stored in a retrieval system or transmitted in any form or by any means – electronic, photocopying, recording or otherwise – without prior written permission from BSI.

This does not preclude the free use, in the course of implementing the standard, of necessary details such as symbols, and size, type or grade designations. If these details are to be used for any other purpose than implementation then the prior written permission of BSI must be obtained.

Details and advice can be obtained from the Copyright & Licensing Manager.

Tel: +44 (0)20 8996 7070 Email: [copyright@bsigroup.com](mailto:copyright@bsigroup.com)