

# Service diagnostic interface for consumer electronics products and networks — Implementation for IEEE 1394

The European Standard EN 62286:2004 has the status of a  
British Standard

ICS 35.200; 35.240.99

## National foreword

This British Standard is the official English language version of EN 62286:2004. It is identical with IEC 62286:2003.

The UK participation in its preparation was entrusted to Technical Committee EPL/100, Audio, video and multimedia systems and equipment, which has the responsibility to:

- aid enquirers to understand the text;
- present to the responsible international/European committee any enquiries on the interpretation, or proposals for change, and keep the UK interests informed;
- monitor related international and European developments and promulgate them in the UK.

A list of organizations represented on this committee can be obtained on request to its secretary.

### Cross-references

The British Standards which implement international or European publications referred to in this document may be found in the *BSI Catalogue* under the section entitled “International Standards Correspondence Index”, or by using the “Search” facility of the *BSI Electronic Catalogue* or of British Standards Online.

This publication does not purport to include all the necessary provisions of a contract. Users are responsible for its correct application.

**Compliance with a British Standard does not of itself confer immunity from legal obligations.**

### Summary of pages

This document comprises a front cover, an inside front cover, the EN title page, pages 2 to 20, an inside back cover and a back cover.

The BSI copyright notice displayed in this document indicates when the document was last issued.

### Amendments issued since publication

Amd. No.	Date	Comments

EUROPEAN STANDARD

**EN 62286**

NORME EUROPÉENNE

EUROPÄISCHE NORM

April 2004

---

ICS 35.200; 35.240.99

English version

**Service diagnostic interface for consumer  
electronics products and networks –  
Implementation for IEEE 1394  
(IEC 62286:2003)**

Interface de diagnostic de service  
pour les produits électroniques  
grand public et les réseaux –  
Mise en oeuvre pour l'IEEE 1394  
(CEI 62286:2003)

Kundendienst-Diagnoseschnittstelle  
für Geräte und Netzwerke  
der Unterhaltungselektronik –  
Anwendung für IEEE 1394  
(IEC 62286:2003)

This European Standard was approved by CENELEC on 2004-03-01. CENELEC members are bound to comply with the CEN/CENELEC Internal Regulations which stipulate the conditions for giving this European Standard the status of a national standard without any alteration.

Up-to-date lists and bibliographical references concerning such national standards may be obtained on application to the Central Secretariat or to any CENELEC member.

This European Standard exists in three official versions (English, French, German). A version in any other language made by translation under the responsibility of a CENELEC member into its own language and notified to the Central Secretariat has the same status as the official versions.

CENELEC members are the national electrotechnical committees of Austria, Belgium, Cyprus, Czech Republic, Denmark, Estonia, Finland, France, Germany, Greece, Hungary, Iceland, Ireland, Italy, Latvia, Lithuania, Luxembourg, Malta, Netherlands, Norway, Poland, Portugal, Slovakia, Slovenia, Spain, Sweden, Switzerland and United Kingdom.

**CENELEC**

European Committee for Electrotechnical Standardization  
Comité Européen de Normalisation Electrotechnique  
Europäisches Komitee für Elektrotechnische Normung

**Central Secretariat: rue de Stassart 35, B - 1050 Brussels**

---

## **Foreword**

The text of the International Standard IEC 62286:2003, prepared by IEC TC 100, Audio, video and multimedia systems and equipment, was submitted to the formal vote and was approved by CENELEC as EN 62286 on 2004-03-01 without any modification.

The following dates were fixed:

- latest date by which the EN has to be implemented  
at national level by publication of an identical  
national standard or by endorsement (dop) 2005-03-01
- latest date by which the national standards conflicting  
with the EN have to be withdrawn (dow) 2007-03-01

Annex ZA has been added by CENELEC

---

## **Endorsement notice**

The text of the International Standard IEC 62286:2003 was approved by CENELEC as a European Standard without any modification.

---

## CONTENTS

INTRODUCTION.....	4
1 Scope.....	5
2 Normative references .....	5
3 Terms, definitions and abbreviations .....	6
3.1 Terms and definitions .....	6
3.2 Abbreviations .....	7
4 Different types of service diagnostics .....	8
4.1 Stand-alone products .....	8
4.2 A/V or multimedia network.....	8
4.3 Remote diagnosis.....	8
5 Specification of the SDI .....	8
5.1 General .....	8
5.2 Hardware .....	8
5.2.1 Tester hardware requirements .....	8
5.2.2 Connection cable.....	8
5.2.3 Device Under Test (DUT) hardware requirements .....	9
5.3 Software.....	9
5.3.1 General .....	9
5.3.2 Tester software requirements .....	9
5.3.3 DUT software requirements for the SDI .....	10
6 Tester software requirements .....	10
6.1 Interface to manufacturer service program .....	10
6.2 Connecting the diagnostic unit.....	10
6.3 Product identification.....	11
6.3.1 General information (company identification) .....	11
6.3.2 Company specific information .....	11
6.3.3 Product-specific information .....	11
7 Control protocol.....	11
7.1 Direct diagnosis .....	11
7.1.1 Configuration ROM directory structure.....	11
7.2 Remote diagnosis.....	16
Annex A (informative) User interface .....	17
Annex ZA (normative) Normative references to international publications with their corresponding European publications .....	20
Figure A.1 – Example of device list.....	18
Figure A.2 – Example of device properties .....	19
Table 1 – Root directory.....	12
Table 2 – Instance directory.....	14
Table 3 – EACEM unit directory .....	14

## INTRODUCTION

Consumer products are often repaired by service workshops who are servicing all kinds of products developed by different manufacturers.

For high complexity products, the fault diagnosis becomes more and more difficult and time consuming. To make diagnosis possible, manufacturers often develop some built-in diagnostic software which can be used for fault finding together with an external diagnostic unit through a Service Diagnostic Interface (SDI).

To avoid the need for a service workshop to purchase several different diagnostic units from different manufacturers for different products, a standardized SDI is proposed for use by all manufacturers and in all products in which such diagnostic interfaces are required. The result will be that only one SDI is needed in the service workshops.

The SDI should also be suitable for diagnosis in a network (A/V or multimedia network) in which different products from different manufacturers are connected together. The interface should also allow for future development.

The standard SDI which has to be specified, should:

- be usable in future products;
- be easily connectable to a product or a network;
- be cheap;
- not limit product design.

## SERVICE DIAGNOSTIC INTERFACE FOR CONSUMER ELECTRONICS PRODUCTS AND NETWORKS – Implementation for IEEE 1394

### 1 Scope

This International Standard specifies the requirements that have to be implemented in future products that incorporate a digital interface, and service diagnostic software developed for these products. The Service Diagnostic Interface (SDI) requires the use of a PC (desktop or laptop) into which service diagnostic software can be loaded. A part of this PC software has to be standardised while another part of this PC software is manufacturer/product related.

To reach a common approach in servicing all products from all manufacturers, it is necessary to standardise specific items in the products (Device Under Test/DUT) as well as in the diagnostic software on the PC.

The Service Diagnostic Interface (SDI) is based on the IEEE 1394:1995 specification because this interface will be used in most future products. The use of this connection and existing communication protocols enable implementation in products at low cost, and gives maximum flexibility and efficiency.

The SDI consists of:

- Specific hardware and software requirements of the DUT.
- Specific requirements of the PC:
  - the Service software,
  - an IEEE 1394 interface (to be built in if not already present).
- The connection between the PC and the DUT.

This specification is a minimal specification necessary to be able to carry out computerised diagnosis and covers the standardised software of the PC as well as the standardised software and provisions in the DUT.

If an IEEE 1394 interface is present on the product, then the requirement for product identification as described in this document (see 6.3) is mandatory. In addition, all communication for any service application should go through the IEEE 1394 interface only, as described in this document (in Clause 7).

### 2 Normative references

The following referenced documents are indispensable for the application of this document. For dated references, only the edition cited applies. For undated references, the latest edition of the referenced document (including any amendments) applies.

IEC 61883-1:2003, *Consumer audio/video equipment – Digital Interface – Part 1: General*

IEEE 1212:2001, *Microprocessor Systems – Control and Status Registers (CSR): Architecture for microcomputer buses*

IEEE 1394:1995, *IEEE Standard for a High Performance Serial Bus – Firewire*

IEEE 1394a:2000, *IEEE Standard for a High Performance Serial Bus – Amendment 1*

### 3 Terms, definitions and abbreviations

#### 3.1 Terms and definitions

For the purposes of this International Standard, the following terms and definitions apply.

##### 3.1.1

###### **configuration ROM**

area of memory within an IEEE 1394-enabled device which holds specific information about the device, as defined in IEEE 1212. Device information is held in a hierarchy of directories within the ROM

##### 3.1.2

###### **EACEM unit directory**

see unit directory

##### 3.1.3

###### **HW\_Version**

hardware version. IEEE 1212 optionally uses this to identify diagnostic software

##### 3.1.4

###### **instance directory**

second level in the directory hierarchy. The instance directories provide a method to group unit architectures (software protocols) to identify shared physical components. This directory contains the offset into memory of various Unit directories, including the EACEM unit directory

##### 3.1.5

###### **IEEE 1394 repeater**

another IEEE 1394 device in the network capable of relaying or repeating data. This device may have more IEEE 1394 sockets and can provide a suitable connection into the system

##### 3.1.6

###### **Key\_ID**

Key Identifier. IEEE 1212 use this to identify the contents of the remaining 3 bytes of a quadlet in a directory. Key\_ID is 6 bits long: the proceeding 2 bits are the type, which identifies whether the data in the following 3 bytes is immediate (i.e. they contain the actual data) or whether the 3 bytes are an offset to another place in memory

##### 3.1.7

###### **minimal ASCII**

IEEE 1212 defines a limited set of Latin characters that can be used for text. The particular set specified in SDI uses the 1 byte coding specified in IEEE 1212

##### 3.1.8

###### **model\_ID**

model Identifier. IEEE 1212 optionally provide this to identify the model. The model should represent a family or class of products and should not be unique to individual devices

##### 3.1.9

###### **multimedia**

products or networks combining audio, video, computer and/or communication data

##### 3.1.10

###### **network**

two or more CE (audio, video or multimedia) products connected together



**3.1.11****quadlet**

group of four bytes (32 bits). IEEE 1394 transmission is based on the transfer of quadlets and all data is quadlet-aligned

**3.1.12****remote diagnosis**

diagnosis of product via telephone, internet, etc.

**3.1.13****root directory**

the top level directory in the hierarchy of directories. This contains some basic information about the device, such as the Vendor\_ID, and also the offset into memory of the Instance directory

**3.1.14****unit directory**

the third and lowest level in the hierarchy of directories. Each unit directory uniquely identifies the software interface (unit architecture) used to control the unit. The EACEM Unit directory provides additional information, either directly or indirectly, needed to specify locations used in the SDI specification

**3.1.15****Vendor\_ID**

vendor Identifier. This is the RID for the vendor

**3.2 Abbreviations**

<b>ASCII-1</b>	American Standard Code for Information Interchange. This defines a set of Latin characters and control codes representing text. See also Minimal ASCII in 3.1.7.
<b>A/V</b>	Audio/Video
<b>AV/C</b>	Audio, Video/Control
<b>AV/C-CTS</b>	Audio, Video/Control – Command and Transaction Set
<b>CE</b>	Consumer Electronics
<b>CSR</b>	Control and Status Register
<b>DUT</b>	Device Under Test
<b>EACEM</b>	European Association of Consumer Electronics Manufacturers
<b>ID</b>	Identifier
<b>IEEE</b>	Institute of Electrical and Electronics Engineers
<b>OEM</b>	Original Equipment Manufacturer
<b>PC</b>	Personal Computer
<b>RID</b>	Registration authority Identifier
<b>ROM</b>	Read Only Memory
<b>SDI</b>	Service Diagnostic Interface

## **4 Different types of service diagnostics**

### **4.1 Stand-alone products**

In this situation, a connection is made between the diagnostic PC and the DUT, where the DUT is from any manufacturer and of any type.

### **4.2 A/V or multimedia network**

In this situation, a connection is made between the diagnostic PC and a network of A/V or multimedia products.

In an A/V or multimedia network, several different products are interconnected and not all of them are necessarily from the same manufacturer.

In this case, the SDI must be able to list the products on the network, detect which product is causing a problem, and diagnose the product concerned.

### **4.3 Remote diagnosis**

In addition to the configurations described above (stand-alone product or network), a link can be made (for example via telephone, Internet, etc.) between the diagnostic PC in the workshop and a DUT/network at the customer's home. Therefore, if a product has both an IEEE 1394 interface and a remote connection capability, this product should be able to transfer the diagnostic data, as described in this document, through the remote connection.

It has to be specified how this type of communication is carried out, and which level of diagnosis will be possible. These items are not in the scope of this document, and will be defined later on.

## **5 Specification of the SDI**

### **5.1 General**

The SDI consists of:

- hardware and software, both in the DUT and in the test equipment ("tester");
- the connection between the tester and the DUT.

The total SDI can be divided into the elements specified in 5.2 and 5.3.

### **5.2 Hardware**

#### **5.2.1 Tester hardware requirements**

This can be a computer (for example desktop or laptop PC, MAC, or workstation) provided with at least one suitable IEEE 1394 interface as specified in IEC 61883-1 and running the necessary diagnostic software. (Minimum specification depends on the respective tester platform).

#### **5.2.2 Connection cable**

One IEEE 1394 connection cable is required. The type of cable depends on the connector (4pin or 6pin) configuration that is used on the DUT and the PC.

For the specification of the cable, please refer to IEC 61883-1, IEEE 1394 and IEEE 1394a.

### **5.2.3 Device Under Test (DUT) hardware requirements**

#### **5.2.3.1 General**

The DUT shall be provided with at least one IEEE 1394 connector (4 or 6 pins) as specified in IEC 61883-1, IEEE 1394 and IEEE 1394a.

#### **5.2.3.2 Stand alone products**

For diagnosis in a stand-alone product, one connector, as specified in 5.2.3.1, is adequate.

#### **5.2.3.3 A/V or multimedia network**

In a network, several products are connected to each other in serial, star or parallel configuration. In this case, most products will be provided with two IEEE 1394 connectors.

For diagnosis on a network, the PC should be connected to any connector that is not in use on one of the products in the network.

If no IEEE 1394 connector is free in the network, there are 3 possibilities:

- 1) Use an IEEE 1394 repeater.
- 2) Disconnect one of the products from the network.
- 3) Use a tester provided with two IEEE 1394 connectors.

### **5.3 Software**

#### **5.3.1 General**

The software for the SDI can be divided into two parts (tester and DUT) of which each part again can be divided into mandatory (SDI common) software and non-mandatory (manufacturer-dependent) software.

The manufacturer dependent software will not be specified in this document.

#### **5.3.2 Tester software requirements**

The software platform of the tester must be able to handle IEEE 1394 communication (for example on a PC implementation, Windows<sup>®</sup> 98 2<sup>nd</sup> edition, Windows<sup>®</sup> 2000 or higher, or an equivalent operating system is required).

The SDI common software on the tester (developed under the responsibility of EACEM) has the following functionalities:

- a) To initiate a Self\_Test as described in this document. (7.1.1.6 and 7.1.1.7).
- b) To read out the Self\_Test response (available in the Test\_Result\_Register) of all products.
- c) To display a list of all products connected to the IEEE 1394 network to which the tester is connected. On the display should be listed:
  - name of the manufacturer,
  - model number of the products,
  - textual description of the products.
- d) To indicate which product has passed its Self\_Test and is found to be "OK" or "Not OK".
- e) To start up all product/manufacturer specific diagnostic software. The start-up mechanism to which the specific diagnostic software shall conform is described in 6.1.

### 5.3.3 DUT software requirements for the SDI

The DUT shall be able to communicate diagnostic information, which is available in the configuration ROM (as specified in 7.1), to the tester via IEEE 1394.

In addition, the SDI common software in the DUT shall be able to:

- a) run a selftest routine;
- b) load information into the Test\_Result\_Register.

## 6 Tester software requirements

### 6.1 Interface to manufacturer service program

The common application, from which a possible example is described in Annex A, is able to launch the manufacturer's service program; the manufacturer's service program shall fulfil the following requirements:

The manufacturer's service program shall be installed in a subdirectory located immediately under the main SDI installation directory. The subdirectory name shall be that of the manufacturer's ID.

The service program is launched with the following command line:

**vvvvv<SEP>SPvvvvv/SDI/GUID:hhhhhhhhIIIIII/CON:z/HWV:wwwww**

- <SEP> is the standard file-system sub-directory separator of the tester platform, for example “\” on Windows®.
- **vvvvv** is the ASCII representation of the Vendor\_ID in hexadecimal.
- **/SDI** informs the service program that it has been started from the common application.
- **/GUID:hhhhhhhhIIIIII**, where "hhhhhhh" is the ASCII representation of the Company\_ID + Chip\_ID\_hi in hexadecimal, and "IIIIII" that for Chip\_ID\_lo, together making the GUID.
- **/CON:z**, where “z” is the ASCII representation of the connection type (“R” = remote, “D” = direct).
- **/HWV:wwwww**, where “wwwww” is the ASCII representation of the hardware version in hexadecimal (if available).

Example:

A company with the Vendor\_ID 00A095<sub>16</sub> must provide a service program called “SP00A095”. When this program is invoked from the SDI application the command line could look like this:

00A095\SP00A095 /SDI /GUID: 00A0950000222222 /CON:D /HWV:000001

### 6.2 Connecting the diagnostic unit

The DUT is connected to the tester using one of the standardised IEEE 1394 cables or one of the adapter cables (4 pins to 6 pins).

## **6.3 Product identification**

The common application is able to retrieve and show following information from the SDI compliant devices.

### **6.3.1 General information (company identification)**

A plain text version of the name of the manufacturer or vendor will be read from the DUT and displayed. This text is always available in “Minimal ASCII” format (see IEEE 1212). Optionally, there is a provision for text in other character sets and languages. The tester should display this information for all devices in the system. Note that the name displayed might not be the same as the name on the physical device.

### **6.3.2 Company specific information**

The model number will be read from the DUT and displayed. This text is always available in “Minimal ASCII” format (see IEEE 1212). Optionally, there is provision for text in other character sets and languages. The tester will display this information for all devices in the system. Note that the model number displayed might not be the same as that of the physical device.

### **6.3.3 Product-specific information**

After startup of the product-specific service software, the hardware version of the product and the test software version should be displayed.

The specific test software for a device can be identified from the combination of `VENDOR_ID` and `MODEL_NUMBER`. However, this can also be specified with `HW_VERSION`, see 7.1.1.2

## **7 Control protocol**

### **7.1 Direct diagnosis**

The protocol makes use of the existing low-level Quadlet read/write protocol, which is used in IEEE 1394. This is defined in Subclause 6.2.2 of IEEE 1394 and also Subclause 10 of IEEE 1394a.

This protocol allows quadlets (32 bits) of data to be read from or written to addresses in the DUT, which are specified in the EACEM Unit Directory (see 7.1.1.2.2).

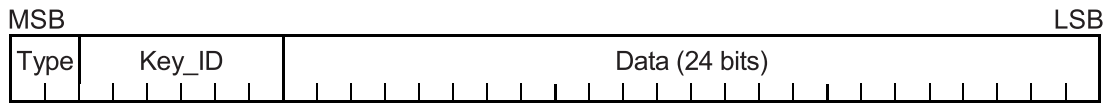
These directories are in the “configuration ROM” memory area inside the register space, as defined by IEEE 1212. The directories contain pointers to addresses in the configuration ROM or the unit memory (also defined in IEEE 1212).

#### **7.1.1 Configuration ROM directory structure**

IEEE 1212 defines a hierarchy of directories that contain specific information about a device. The hierarchy begins at the root directory, which starts at an absolute address (FFFF F000 0414<sub>16</sub>) specified in IEEE 1212. This directory contains a pointer to the address of the instance directory. The instance directory contains a pointer to several unit directories (if the device supports EACEM SDI). One of these unit directories is the EACEM unit directory.

### 7.1.1.1 Configuration ROM data structure

Data relevant to EACEM in the configuration ROM has the following general format:



**Type:** describes whether the data is immediate or an offset (to a location in memory, a leaf or a directory). For full details of *Type* value and the relevant absolute or relative referencing, see IEEE 1212. Note that offsets are specified in quadlets: the actual offset in bytes is 4 times the quadlet value specified in the data field above (see IEEE 1212).

**Key\_ID:** specifies the type of data (for example *Vendor\_ID*) which is contained in the following 24 bits.

The byte order and the addressing order is specified in Subclause 3.2 of IEEE 1212.

### 7.1.1.2 Root directory

The information in the root directory that is relevant to EACEM SDI is shown in Table 1.

**Table 1 – Root directory**

IEEE 1212	EACEM SDI	<i>Type</i>	<i>Key_ID</i>	Root directory
M	M	$00_2$	$03_{16}$	Vendor_ID
O	M	<sup>1)</sup>	$01_{16}$	Vendor_ID_Text_Descriptor
				Optional entries for Vendor Icon(s)
O	M	$00_2$	$17_{16}$	Model_ID
O	M	<sup>1)</sup>	$01_{16}$	Model_ID_Text_Descriptor
				Optional entries for model icon(s)
				Other mandatory entries, for example Node_Capabilities
				...
O	M	$11_2$	$11_{16}$	Unit directory (for example AV/C)
M	M	$11_2$	$18_{16}$	Instance directory
				...
O	O	$00_2$	$04_{16}$	HW_Version
				...
M = Mandatory; O = Optional.				
<sup>1)</sup> These Text Descriptors can be in CSR offset, leaf or leaf directory and use different values of type accordingly – see 7.1.1.2.2.				

Note that Table 1 shows only the information required for EACEM SDI: there will also be other information in the root directory. For details, see IEEE 1212. This latter document also describes the order in which information is stored in the directory.

**Vendor\_ID:** this contains the 24-bit RID (Registration Authority ID) of the manufacturer of the device. In the case of OEM products, this can be either the RID of the manufacturer or vendor of the device.

**Vendor\_ID\_Text\_Descriptor:** this follows immediately after the *Vendor\_ID* entry and points to a text string that contains the manufacturer's name. In the case of OEM products, this can be either the name of the manufacturer or vendor of the device and may differ from the owner of the RID in *Vendor\_ID*. Note that there may be other entries for vendor icons following this entry. For details of text, descriptor entries and structure, see 7.1.1.2.2.

**Model\_ID:** this contains the Identification of the model number.

**Model\_ID\_Text\_Descriptor:** this follows immediately after the *Model\_ID* entry and points to a text string that contains the model name. For details of text, descriptor entries and structure, see 7.1.1.2.2.

**Unit directory:** this contains the offset into CSR memory of the unit directory, relative to the current directory entry. There must be at least one unit directory in every device, corresponding to the control protocol that the device uses. For example, in CE devices, this is often the AV/C-CTS protocol. Note that the AV/C directory is included in the root only for backwards compatibility.

**Instance directory:** this contains the offset into CSR memory to the start of the instance directory, relative to the current directory entry.

**HW\_Version:** this contains an identification number for the test software. See 7.1.1.2.1.

#### 7.1.1.2.1 Identifying the diagnostic software

The combination of *Model\_ID* and *Vendor\_ID* is usually sufficient to identify the necessary test software. However, the *HW\_Version* may optionally specify this. Where *HW\_Version* exists, the combination of *HW\_Version* and *Vendor\_ID* overrides the software specified by the *Model\_ID* and *Vendor\_ID* combination.

#### 7.1.1.2.2 Text\_Descriptors and icons

If only one language is used, then the text pointed to by any of the text descriptors uses the minimal 1-byte ASCII character set, as defined in IEEE 1212. The text can be specified in a CSR offset, leaf or leaf directory. The tester must read and display the minimal 1-byte ASCII string.

Optionally, if more than one language is used, then the text descriptor should point to a leaf directory that contains the text, with the minimal 1-byte ASCII character string as the first entry. The tester need only read the minimal 1-byte ASCII string. Similarly, icons may also be optionally provided for the vendor and model. For further details, see IEEE 1212.

In all cases, the *type* (CSR offset, leaf or leaf directory) must be identified accordingly.

#### 7.1.1.3 Instance directory

The instance directory contains pointers to the unit directories of the DUT. In IEEE 1212 there must be at least one unit directory. For a device that supports EACEM SDI, there must be an EACEM unit directory, which must have a pointer in the instance directory (see Table 2).

**Table 2 – Instance directory**

IEEE 1212	EACEM SDI	Type	Key_ID	Instance directory
M	<b>M</b>	11 <sub>2</sub>	11 <sub>16</sub>	Unit directory (for example AV/C)
O	<b>O</b>	11 <sub>2</sub>	11 <sub>16</sub>	Unit directory
				...
O	<b>M</b>	11 <sub>2</sub>	11 <sub>16</sub>	EACEM unit directory

M = Mandatory; O = Optional.

**Unit directory:** contains the offset into CSR memory of the unit directory. There must be at least one unit directory in every device, corresponding to the control protocol that the device uses. For example, in CE devices, this is often the AV/C-CTS protocol.

**EACEM unit directory:** contains the offset into CSR memory of the EACEM unit directory. This is mandatory for a device that supports EACEM SDI.

**7.1.1.4 EACEM unit directory**

This directory contains information and pointers for the EACEM SDI.

**Table 3 – EACEM unit directory**

IEEE 1212	EACEM SDI	Type	Key_ID	EACEM unit directory
O	<b>M</b>	00 <sub>2</sub>	12 <sub>16</sub>	EACEM_RID <b>00 B0 EC</b> <sub>16</sub>
O	<b>M</b>	00 <sub>2</sub>	13 <sub>16</sub>	Version ( <b>10 00</b> <sub>16</sub> for this version)
O	<b>M</b>	01 <sub>2</sub>	38 <sub>16</sub>	Test_Result_Reg_Offset
O	<b>O</b>	10 <sub>2</sub>	01 <sub>16</sub>	Descriptor Entry
O	<b>M</b>	01 <sub>2</sub>	39 <sub>16</sub>	Test_Start_Offset

M = Mandatory; O = Optional.

**EACEM\_RID:** this identifies this directory as the EACEM unit directory and has the value of the EACEM registration authority ID, 00 B0 EC<sub>16</sub>.

**Version:** this identifies the EACEM specification and its version. The format of this field is:

Type	Key_ID	EACEM_Specification	EACEM_Specification_Version
0 0	13 <sub>16</sub>	_type	10 00 <sub>16</sub> for this version

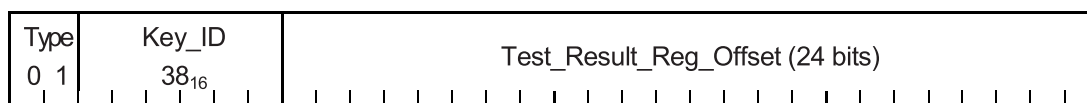


**EACEM\_Specification\_type:** identifies the EACEM specification. For EACEM SDI, this value is  $01_{16}$ . All other values are reserved.

Note that a SDI-compliant device can be identified by the combination of the *EACEM\_RID* with an *EACEM\_Specification\_Type* of  $01_{16}$ .

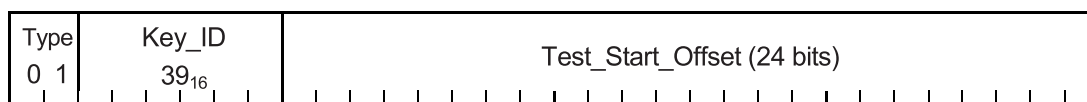
**EACEM\_Specification\_Version:** this identifies the version of the *EACEM\_Specification\_type*, in *major\_version* and *revision* format. For example, the first version of a specification will be version 1.0, giving a *major\_version* of  $01_{16}$  and a *revision* of 0.

**Test\_Result\_Reg\_Offset:** this give a 24-bit offset (relative to  $FFFF\ F000\ 0000_{16}$ ) into unit memory for the *Test\_Result\_Register*. The value of *Key\_ID* for this field is  $38_{16}$ .



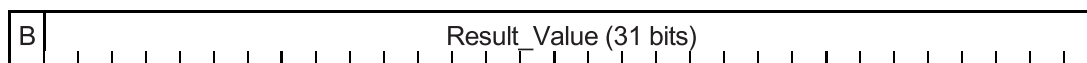
**Descriptor entry:** this gives a 24-bit offset (relative to the current directory entry) for an optional text string which can be used to provide information to the tester. The format is that of a single text descriptor according to IEEE 1212.

**Test\_Start\_Offset:** this give a 24-bit offset (relative to  $FFFF\ F000\ 0000_{16}$ ) into unit memory for the *Test\_Start\_Register*. The value of *Key\_ID* for this field is  $39_{16}$ .



#### 7.1.1.5 Test\_Result\_Register

The *Test\_Result\_Register* is used to provide diagnostic information back to the tester. The *Test\_Result\_Register* returns a 31-bit value in response to a 31-bit *Test\_Command* (see below). The structure of this quadlet is:



**B:** is the *Busy\_Flag*. This value is set to “1” while a test is in progress or the register is being written. When the *Result\_Value* is stable, this value is set to “0”.

**Result\_Value:** this is a 31-bit value which is used to return the result of tests initiated by writes to the *Test\_Start\_Register*. In response to a *Self\_Test* command (see below), the device should return a *Result\_Value* of 0 if no fault is detected. All other values are not defined in this specification and manufacturers are free to define their own values.

#### 7.1.1.6 Test\_Start\_Register

Diagnostic tests can be initiated by writing to the *Test\_Start\_Register*.



**INI:** the transition of this flag from 1 to 0 is an acknowledgement to the tester that the device has received a Test Command and is currently performing the test specified in the *TEST\_COMMAND*.

**TEST\_COMMAND:** this defines the command (test) to be executed. EACEM SDI defines only one command, the *Self\_Test* command. Writing the value 80 00 00 01<sub>16</sub> (including the *INI* flag) to this register should initiate the *Self\_Test* diagnostic routine. All other values, up to 31 bits, are free to be defined by manufacturers.

#### 7.1.1.7 Writing and reading the device registers

The sequence of events for writing to the *Test\_Start\_Register* and reading the result in the *Test\_Result\_Register* should be performed in the following way:

- The tester writes a *Test\_Command* to the *Test\_Start\_Register*, with the *INI* flag set to '1' and then waits for the transaction to be completed.
- When the DUT receives a *Test\_Command* with the *INI* flag set to '1', it:
  - updates the *Test\_Start\_Register* location with the received value of *Test\_Command* and *INI* flag;
  - immediately starts to execute the *Test\_Command*;
  - sets the *Busy\_flag* in the *Test\_Result\_Register* to '1' ; and then
  - resets the *INI* flag to '0'; and
  - continues to execute the *Test\_Command*.
- When the DUT has completed the *Test\_Command* it
  - writes the *Result\_Value* to the *Test\_Result\_Register* ; and
  - resets the *Busy\_flag* to '0'.
- When the tester sees the '1' to '0' transition of the *INI* flag it polls the *Test\_Result\_Register*, using a quadlet read.
- When the tester sees the '1' to '0' transition of the *Busy\_flag* the remaining 31 bits represent the *Result\_Value*.

## 7.2 Remote diagnosis

See 4.3.

## **Annex A** (informative)

### **User interface**

An example of a possible user interface for the SDI is described in this Annex. The performance and appearance of the user interface depends from the software used, the type of tester, etc.

The user interface on the tester includes:

- installation (type of tester, Windows<sup>®</sup> environment, password, etc.),
- start up screen,
- customer identification,
- product identification,
- selection of direct/remote diagnostic,
- diagnostic/set up/etc. selection,
- startup of manufacturer service program.

#### **A.1 Installation procedure**

The installation of the user interface software can be password protected, to prevent unauthorised installation of the program.

The installation program verifies that the tester is capable to run the program (there are minimum requirements to the processing performance/graphic capabilities/etc.; see 5.3.2).

#### **A.2 Startup of the program**

During the startup procedure it is possible (but not required) to select the connection (direct/remote).

#### **A.3 Runtime functions**

##### **A.3.1 Showing network devices**

A list of all present devices, provided with an IEEE 1394 interface, are shown. This list can be shown in different ways, for example sorted by connection.

Examples of this information screen:

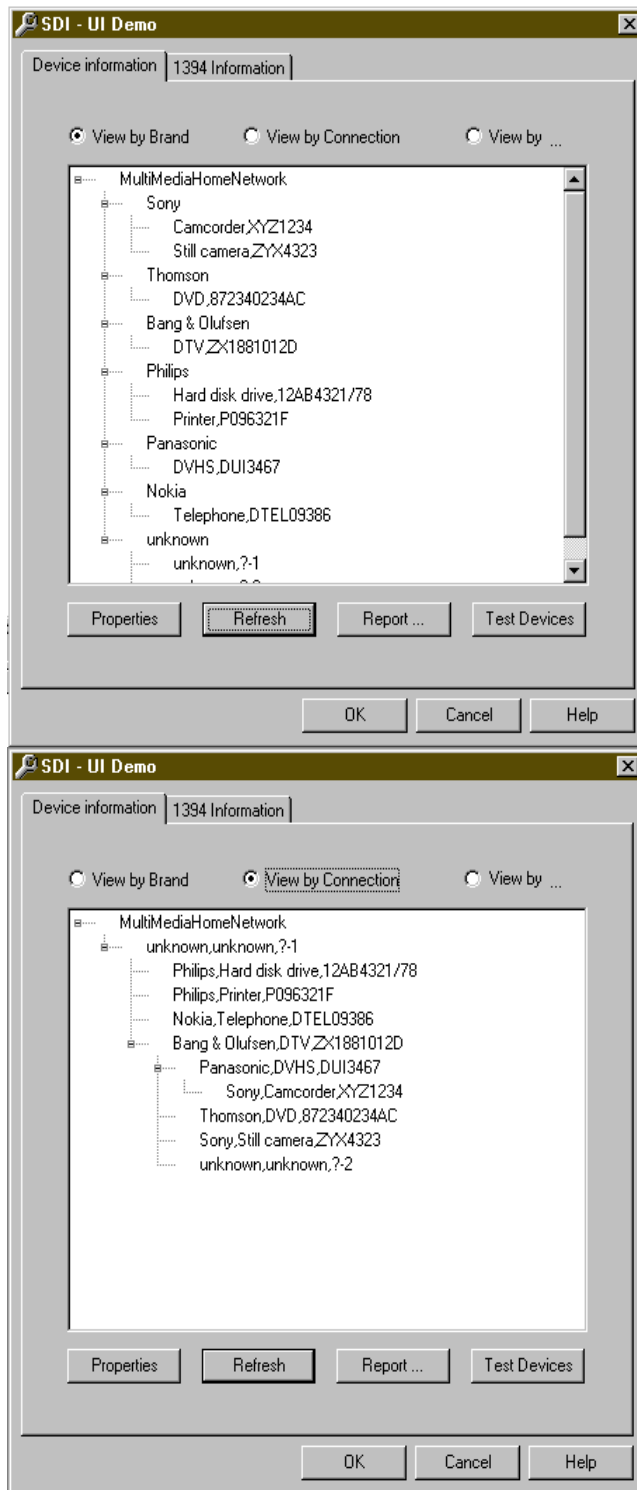


Figure A.1 – Example of device list

### A.3.2 Running device test

It is possible to start a self-test of all SDI-compliant devices.

A device that fails will be marked (in the device list).

### A.3.3 Showing device properties

A properties screen for each SDI-compliant device found in the network can be opened. The properties screen provides all known information about the device, the information described in 6.3 will be shown.

The manufacturers service program can be launched from the properties screen.

An example of this view could be like this:



Figure A.2 – Example of device properties

### A.3.4 Report creation

It is possible to enter user information (name of service technician) and the customer information (optional).

After entering that a report can be created, containing information about:

- user name (service technician),
- customer name,
- current date,
- all found devices in the network with the result of their tests,
- "properties information" (see above).

### A.3.5 Program configuration

Configuration of the program makes it possible to:

- select the connection type from direct to remote and back again,
- Change customer name/user name.

## Annex ZA (normative)

### Normative references to international publications with their corresponding European publications

The following referenced documents are indispensable for the application of this document. For dated references, only the edition cited applies. For undated references, the latest edition of the referenced document (including any amendments) applies.

NOTE Where an international publication has been modified by common modifications, indicated by (mod), the relevant EN/HD applies.

<u>Publication</u>	<u>Year</u>	<u>Title</u>	<u>EN/HD</u>	<u>Year</u>
IEC 61883-1	2003	Consumer audio/video equipment - Digital interface Part 1: General	EN 61883-1	2003
IEEE Std 1212	2001	Microprocessor Systems - Control and Status Registers (CSR) Architecture for Microcomputer Buses	-	-
IEEE Std 1394	1995	IEEE Standard for a High Performance Serial Bus - Firewire	-	-
IEEE Std 1394A	2000	IEEE Standard for a High Performance Serial Bus - Amendment 1	-	-



---

---

## BSI — British Standards Institution

BSI is the independent national body responsible for preparing British Standards. It presents the UK view on standards in Europe and at the international level. It is incorporated by Royal Charter.

### Revisions

British Standards are updated by amendment or revision. Users of British Standards should make sure that they possess the latest amendments or editions.

It is the constant aim of BSI to improve the quality of our products and services. We would be grateful if anyone finding an inaccuracy or ambiguity while using this British Standard would inform the Secretary of the technical committee responsible, the identity of which can be found on the inside front cover. Tel: +44 (0)20 8996 9000. Fax: +44 (0)20 8996 7400.

BSI offers members an individual updating service called PLUS which ensures that subscribers automatically receive the latest editions of standards.

### Buying standards

Orders for all BSI, international and foreign standards publications should be addressed to Customer Services. Tel: +44 (0)20 8996 9001. Fax: +44 (0)20 8996 7001. Email: [orders@bsi-global.com](mailto:orders@bsi-global.com). Standards are also available from the BSI website at <http://www.bsi-global.com>.

In response to orders for international standards, it is BSI policy to supply the BSI implementation of those that have been published as British Standards, unless otherwise requested.

### Information on standards

BSI provides a wide range of information on national, European and international standards through its Library and its Technical Help to Exporters Service. Various BSI electronic information services are also available which give details on all its products and services. Contact the Information Centre. Tel: +44 (0)20 8996 7111. Fax: +44 (0)20 8996 7048. Email: [info@bsi-global.com](mailto:info@bsi-global.com).

Subscribing members of BSI are kept up to date with standards developments and receive substantial discounts on the purchase price of standards. For details of these and other benefits contact Membership Administration. Tel: +44 (0)20 8996 7002. Fax: +44 (0)20 8996 7001. Email: [membership@bsi-global.com](mailto:membership@bsi-global.com).

Information regarding online access to British Standards via British Standards Online can be found at <http://www.bsi-global.com/bsonline>.

Further information about BSI is available on the BSI website at <http://www.bsi-global.com>.

### Copyright

Copyright subsists in all BSI publications. BSI also holds the copyright, in the UK, of the publications of the international standardization bodies. Except as permitted under the Copyright, Designs and Patents Act 1988 no extract may be reproduced, stored in a retrieval system or transmitted in any form or by any means – electronic, photocopying, recording or otherwise – without prior written permission from BSI.

This does not preclude the free use, in the course of implementing the standard, of necessary details such as symbols, and size, type or grade designations. If these details are to be used for any other purpose than implementation then the prior written permission of BSI must be obtained.

Details and advice can be obtained from the Copyright & Licensing Manager. Tel: +44 (0)20 8996 7070. Fax: +44 (0)20 8996 7553. Email: [copyright@bsi-global.com](mailto:copyright@bsi-global.com).