



BSI Standards Publication

Fibre optic active components and devices — Test and measurement procedures

Part 3: Optical power variation induced by mechanical disturbance in optical receptacles and transceiver interfaces

National foreword

This British Standard is the UK implementation of EN 62150-3:2015. It is identical to IEC 62150-3:2015. It supersedes BS EN 62150-3:2012 which is withdrawn.

The UK participation in its preparation was entrusted by Technical Committee GEL/86, Fibre optics, to Subcommittee GEL/86/3, Fibre optic systems and active devices.

A list of organizations represented on this committee can be obtained on request to its secretary.

This publication does not purport to include all the necessary provisions of a contract. Users are responsible for its correct application.

© The British Standards Institution 2015.

Published by BSI Standards Limited 2015

ISBN 978 0 580 83712 8

ICS 33.180.20

Compliance with a British Standard cannot confer immunity from legal obligations.

This British Standard was published under the authority of the Standards Policy and Strategy Committee on 30 September 2015.

Amendments/corrigenda issued since publication

Date	Text affected
-------------	----------------------

EUROPEAN STANDARD

EN 62150-3

NORME EUROPÉENNE

EUROPÄISCHE NORM

August 2015

ICS 33.180.20

Supersedes EN 62150-3:2012

English Version

**Fibre optic active components and devices -
Test and measurement procedures -
Part 3: Optical power variation induced by mechanical
disturbance in optical receptacles and transceiver interfaces
(IEC 62150-3:2015)**

Composants et dispositifs actifs à fibres optiques -
Procédures fondamentales d'essais et de mesures -
Partie 3: Variation de puissance optique induite par des
perturbations mécaniques dans les interfaces d'embases et
d'émetteurs-récepteurs optiques
(IEC 62150-3:2015)

Aktive Lichtwellenleiter-Bauteile und -Bauelemente -
Grundlegende Prüf- und Messverfahren -
Teil 3: Optische Leistungsabweichungen bedingt durch
mechanische Störungen in optischen Kupplungen und
Transceiver-Schnittstellen
(IEC 62150-3:2015)

This European Standard was approved by CENELEC on 2015-06-11. CENELEC members are bound to comply with the CEN/CENELEC Internal Regulations which stipulate the conditions for giving this European Standard the status of a national standard without any alteration.

Up-to-date lists and bibliographical references concerning such national standards may be obtained on application to the CEN-CENELEC Management Centre or to any CENELEC member.

This European Standard exists in three official versions (English, French, German). A version in any other language made by translation under the responsibility of a CENELEC member into its own language and notified to the CEN-CENELEC Management Centre has the same status as the official versions.

CENELEC members are the national electrotechnical committees of Austria, Belgium, Bulgaria, Croatia, Cyprus, the Czech Republic, Denmark, Estonia, Finland, Former Yugoslav Republic of Macedonia, France, Germany, Greece, Hungary, Iceland, Ireland, Italy, Latvia, Lithuania, Luxembourg, Malta, the Netherlands, Norway, Poland, Portugal, Romania, Slovakia, Slovenia, Spain, Sweden, Switzerland, Turkey and the United Kingdom.



European Committee for Electrotechnical Standardization
Comité Européen de Normalisation Electrotechnique
Europäisches Komitee für Elektrotechnische Normung

CEN-CENELEC Management Centre: Avenue Marnix 17, B-1000 Brussels

European foreword

The text of document 86C/1311/FDIS, future edition 2 of IEC 62150-3, prepared by SC 86C "Fibre optic systems and active devices" of IEC/TC 86 "Fibre optics" was submitted to the IEC-CENELEC parallel vote and approved by CENELEC as EN 62150-3:2015.

The following dates are fixed:

- latest date by which the document has to be implemented at national level by publication of an identical national standard or by endorsement (dop) 2016-03-11
- latest date by which the national standards conflicting with the document have to be withdrawn (dow) 2018-06-11

This document supersedes EN 62150-3:2012.

EN 62150-3:2015 includes the following significant technical changes with respect to EN 62150-3:2012:

- extension of application field to SC connector interface transceivers in addition to LC connector interface transceivers specified in the first edition as both transceiver interfaces are very important in the industry;
- addition of a new Annex E dealing with load value difference for connector type in Method A.

Attention is drawn to the possibility that some of the elements of this document may be the subject of patent rights. CENELEC [and/or CEN] shall not be held responsible for identifying any or all such patent rights.

Endorsement notice

The text of the International Standard IEC 62150-3:2015 was approved by CENELEC as a European Standard without any modification.

In the official version, for Bibliography, the following notes have to be added for the standards indicated:

IEC 61300 Series	NOTE	Harmonized as EN 61300 Series.
IEC 61754-4	NOTE	Harmonized as EN 61754-4.
IEC 61754-20	NOTE	Harmonized as EN 61754-20.

Annex ZA
(normative)

**Normative references to international publications
with their corresponding European publications**

The following documents, in whole or in part, are normatively referenced in this document and are indispensable for its application. For dated references, only the edition cited applies. For undated references, the latest edition of the referenced document (including any amendments) applies.

NOTE 1 When an International Publication has been modified by common modifications, indicated by (mod), the relevant EN/HD applies.

NOTE 2 Up-to-date information on the latest versions of the European Standards listed in this annex is available here: www.cenelec.eu

<u>Publication</u>	<u>Year</u>	<u>Title</u>	<u>EN/HD</u>	<u>Year</u>
IEC 61753	Series	Fibre optic interconnecting devices and passive components - Performance standard	EN 61753	Series
IEC 61753-021-6	-	Fibre optic interconnecting devices and passive components performance standard - Part 021-6: Grade B/2 single-mode fibre optic connectors for category O - Uncontrolled environment	EN 61753-021-6	-
IEC 61754	Series	Fibre optic interconnecting devices and passive components - Fibre optic connector interfaces	EN 61754	Series

CONTENTS

FOREWORD	4
1 Scope	6
2 Normative references	6
3 Terms, definitions and abbreviations	6
3.1 Terms and definitions.....	6
3.2 Abbreviations.....	7
4 Measurement consideration.....	7
4.1 Multiple test methods.....	7
4.2 Two wiggle loss mechanisms.....	7
4.2.1 Rationale for two different wiggle loss test methods.....	7
4.2.2 Case A: Point of action for the ferrule.....	7
4.2.3 Case B: Point of action for the plug housing.....	8
5 Test Method A.....	8
5.1 Apparatus.....	8
5.1.1 General.....	8
5.1.2 Test cord.....	8
5.1.3 Power meter.....	8
5.1.4 Test load.....	8
5.2 Test procedures for Tx interfaces.....	9
5.2.1 Test procedures.....	9
5.2.2 Set-up.....	9
5.2.3 Initial measurement.....	9
5.2.4 Apply load and rotate.....	9
5.2.5 Wiggle loss.....	9
5.3 Test procedures for Rx interfaces and optical receptors.....	10
5.3.1 Test procedures.....	10
5.3.2 LOS indicator method.....	10
5.3.3 Receiver optical power monitor method.....	10
6 Test Method B.....	11
6.1 Apparatus.....	11
6.1.1 General.....	11
6.1.2 Test fixture and rotation mechanism.....	11
6.1.3 Test cord.....	11
6.1.4 Power meter.....	12
6.1.5 Test load.....	12
6.2 Test procedures for Tx interfaces.....	12
6.2.1 Test procedures.....	12
6.2.2 Set-up.....	12
6.2.3 Initial measurement.....	12
6.2.4 Apply load.....	12
6.2.5 Measurement.....	12
6.2.6 Wiggle loss.....	12
6.3 Test procedures for Rx interfaces and optical receptors.....	13
6.3.1 Test procedures.....	13
6.3.2 LOS-indicator method.....	13
6.3.3 Receiver optical power monitor method.....	13

7	Test results	14
	Annex A (normative) Load requirements	15
	A.1 Loads for Method A.....	15
	A.2 Loads for Method B.....	15
	Annex B (normative) Summary of test conditions	16
	Annex C (normative) Characteristics of the test cord.....	17
	Annex D (normative) Floating tolerance	20
	Annex E (informative) Load value difference for connector type in Method A	21
	Bibliography.....	22
	Figure 1 – Equipment setup of Method A for Tx interfaces	10
	Figure 2 – Equipment set-up of Method A for Rx interfaces and optical receptors	11
	Figure 3 – Equipment set-up of Method B for Tx interfaces	13
	Figure 4 – Equipment set-up of Method B for Rx interface and optical receptors	14
	Figure C.1 – Wiggle test cord interface (LC connector)	17
	Figure C.2 – Wiggle test cord interface (SC connector).....	18
	Figure D.1 – Floating tolerance.....	20
	Figure E.1 – Floating tolerance	21
	Table 1 – Multiple test methods	7
	Table A.1 – Method A: Loads applied for devices using connector cords with 1,25 mm ferrule and 2,5 mm ferrule.....	15
	Table A.2 – Method B: Loads applied for devices using connector cords with 1,25 mm ferrule and 2,5 mm ferrule.....	15
	Table B.1 – Summary of test conditions for Method A (normative)	16
	Table B.2 – Summary of test conditions for Method B (normative)	16
	Table C.1 – Wiggle test cord specification (LC connector)	17
	Table C.2 – Dimensions of the wiggle test cord interface	18
	Table C.3 – Wiggle test cord specification (SC connector)	18
	Table C.4 – Dimensions of the wiggle test cord interface	19

INTERNATIONAL ELECTROTECHNICAL COMMISSION

**FIBRE OPTIC ACTIVE COMPONENTS AND DEVICES –
TEST AND MEASUREMENT PROCEDURES –****Part 3: Optical power variation induced by mechanical
disturbance in optical receptacles and transceiver interfaces**

FOREWORD

- 1) The International Electrotechnical Commission (IEC) is a worldwide organization for standardization comprising all national electrotechnical committees (IEC National Committees). The object of IEC is to promote international co-operation on all questions concerning standardization in the electrical and electronic fields. To this end and in addition to other activities, IEC publishes International Standards, Technical Specifications, Technical Reports, Publicly Available Specifications (PAS) and Guides (hereafter referred to as "IEC Publication(s)"). Their preparation is entrusted to technical committees; any IEC National Committee interested in the subject dealt with may participate in this preparatory work. International, governmental and non-governmental organizations liaising with the IEC also participate in this preparation. IEC collaborates closely with the International Organization for Standardization (ISO) in accordance with conditions determined by agreement between the two organizations.
- 2) The formal decisions or agreements of IEC on technical matters express, as nearly as possible, an international consensus of opinion on the relevant subjects since each technical committee has representation from all interested IEC National Committees.
- 3) IEC Publications have the form of recommendations for international use and are accepted by IEC National Committees in that sense. While all reasonable efforts are made to ensure that the technical content of IEC Publications is accurate, IEC cannot be held responsible for the way in which they are used or for any misinterpretation by any end user.
- 4) In order to promote international uniformity, IEC National Committees undertake to apply IEC Publications transparently to the maximum extent possible in their national and regional publications. Any divergence between any IEC Publication and the corresponding national or regional publication shall be clearly indicated in the latter.
- 5) IEC itself does not provide any attestation of conformity. Independent certification bodies provide conformity assessment services and, in some areas, access to IEC marks of conformity. IEC is not responsible for any services carried out by independent certification bodies.
- 6) All users should ensure that they have the latest edition of this publication.
- 7) No liability shall attach to IEC or its directors, employees, servants or agents including individual experts and members of its technical committees and IEC National Committees for any personal injury, property damage or other damage of any nature whatsoever, whether direct or indirect, or for costs (including legal fees) and expenses arising out of the publication, use of, or reliance upon, this IEC Publication or any other IEC Publications.
- 8) Attention is drawn to the Normative references cited in this publication. Use of the referenced publications is indispensable for the correct application of this publication.
- 9) Attention is drawn to the possibility that some of the elements of this IEC Publication may be the subject of patent rights. IEC shall not be held responsible for identifying any or all such patent rights.

International Standard IEC 62150-3 has been prepared by subcommittee 86C: Fibre optic systems and active devices, of IEC technical committee 86: Fibre optics.

This second edition cancels and replaces the first edition published in 2012 and constitutes a technical revision.

This edition includes the following significant technical changes with respect to the previous edition:

- extension of application field to SC connector interface transceivers in addition to LC connector interface transceivers specified in the first edition as both transceiver interfaces are very important in the industry;
- addition of a new Annex E dealing with load value difference for connector type in Method A.

The text of this standard is based on the following documents:

FDIS	Report on voting
86C/1311/FDIS	86C/1330/RVD

Full information on the voting for the approval of this standard can be found in the report on voting indicated in the above table.

This publication has been drafted in accordance with the ISO/IEC Directives, Part 2.

A list of all parts in the IEC 62150 series, published under the general title *Fibre optic active components and devices – Test and measurement procedures*, can be found on the IEC website.

The committee has decided that the contents of this publication will remain unchanged until the stability date indicated on the IEC web site under "<http://webstore.iec.ch>" in the data related to the specific publication. At this date, the publication will be

- reconfirmed,
- withdrawn,
- replaced by a revised edition, or
- amended.

A bilingual version of this publication may be issued at a later date.

IMPORTANT – The 'colour inside' logo on the cover page of this publication indicates that it contains colours which are considered to be useful for the correct understanding of its contents. Users should therefore print this document using a colour printer.

FIBRE OPTIC ACTIVE COMPONENTS AND DEVICES – TEST AND MEASUREMENT PROCEDURES –

Part 3: Optical power variation induced by mechanical disturbance in optical receptacles and transceiver interfaces

1 Scope

It has been found that some optical transceivers and receptacles are susceptible to fibre optic cable induced stress when side forces are applied to the mated cable-connector assembly, resulting in variations in the transmitted optical power. The purpose of this part of IEC 62150 is to define physical stress tests to ensure that such optical connections (cable and receptacle) can continue to function within specifications.

This standard specifies the test requirements and procedures for qualifying optical devices for sensitivity to coupled power variations induced by mechanical disturbance at the optical ports of the device.

This standard applies to active devices with optical receptacle interfaces.

This standard describes the testing of transceivers for use with single-mode connectors having either 2,5 mm or 1,25 mm ferrules.

2 Normative references

The following documents, in whole or in part, are normatively referenced in this document and are indispensable for its application. For dated references, only the edition cited applies. For undated references, the latest edition of the referenced document (including any amendments) applies.

IEC 61753 (all parts), *Fibre optic interconnecting devices and passive components performance standard*

IEC 61753-021-6, *Fibre optic interconnecting devices and passive components performance standard – Part 021-6: Grade B/2 single-mode fibre optic connectors for category O – Uncontrolled environment*

IEC 61754 (all parts), *Fibre optic interconnecting devices and passive components – Fibre optic connector interfaces*

3 Terms, definitions and abbreviations

3.1 Terms and definitions

For the purposes of this document, the following terms and definitions apply.

3.1.1 wiggle

mechanical disturbances that induce coupled optical power variation in the optical receptacle and transceiver interface

3.1.2**wiggle loss**

variation in coupled output power (with respect to a no-load, non-rotated measurement) induced in an optical module or receptacle when the mated connector is laterally stressed

3.2 Abbreviations

DUT device under test

LOS loss of signal

Rx receiver

Tx transmitter

4 Measurement consideration**4.1 Multiple test methods**

Since the wiggle loss mechanisms are categorized into two different cases, Case A and B, this standard defines two measurement methods, Method A and B, as shown in Table 1. Method A and B are applicable to the tests for the mechanical endurance of transceivers under wiggle Case A and B, respectively.

Table 1 – Multiple test methods

Test methods	Applicable to	Example of parameters to be included
Method A	Wiggle Case A: test for optical transceivers use with patchcord terminated to connectors which meet interface standards (IEC 61754 series)	Test procedure, test fixture, test jumper, test load
Method B	Wiggle Case B: test for optical transceivers use with patchcord terminated to connectors which meet both interface standards (IEC 61754 series) and performance standards (IEC 61753 series)	Test procedure, test fixture, test jumper, test load

4.2 Two wiggle loss mechanisms**4.2.1 Rationale for two different wiggle loss test methods**

Some optical transceivers and receptacles are susceptible to fibre optic cable induced stress when forces are applied to the mated cable-connector assembly. Depending on the structure of fibre-optic connectors, two different points of action for the receptacle cause two different types of wiggle loss.

The intention of Method A is to help ensure that the transceiver port design is robust enough to work with a variety of cables that meet interface standards available in the field. The intention of Method B is to ensure port designs are robust enough to endure potential side loads during operation and installation with cables of known performance.

To guarantee the mechanical robustness of optical transceivers both Methods A and B or either Method A or B shall be chosen as appropriate.

4.2.2 Case A: Point of action for the ferrule

When the ferrule floating tolerance is insufficient (see Annex D), external side forces applied to the patchcord can cause deformation of the sleeve of the receptacle caused by the ferrule bending moment. This causes variations in the transmitted optical power of transceivers. In this case, the mechanical robustness of transceivers depends on the sleeve, receptacle port,

and optical sub-assembly design. There are also some patchcords which have insufficient ferrule floating tolerance, as this is not specified in interface standards.

4.2.3 Case B: Point of action for the plug housing

When the ferrule floating tolerance is sufficient, external forces applied to the patchcord cause deformation of the receptacle housing caused by the plug bending moment. This causes variations in the transmitted optical power of transceivers. In this case, the mechanical endurance of transceivers depends on the design of the receptacle housings. Sufficient ferrule floating tolerance can be guaranteed by patchcord performance standards as specified in Annex C, Method B.

5 Test Method A

5.1 Apparatus

5.1.1 General

An example of the test apparatus is shown in Figure 1. Details of the elements are given in the following subclauses. Measurement wavelength is in accordance with the wavelength of transceiver specifications, and the test data is obtained at room temperature.

The exact details of the test fixture will depend on the type of DUT. For example, if an optical transceiver is being evaluated, a test board capable of securing and powering up the transceiver may be used. In this case, it is centre-mounted to the spindle of a rotation mechanism so that it can be rotated symmetrically over 360°.

5.1.2 Test cord

In order to simulate the wiggle loss mechanism of Case A, specially designed test patchcords called simulated wiggle test cords are used in Method A. Detail specifications of the simulated wiggle test cord are defined in Annex C.

In Figure 1, the test cord is connected to the transceiver under test. The test jumper has a weight applied to the end of the test cord to stress the connection to the DUT. The test cord is connected to a power meter at the other end to record the transmitted power variations.

5.1.3 Power meter

The power meter is used to measure variations in the coupled power from the DUT. It is set-up to record the maximum peak-to-peak excursions in power level normalized around the initial no-load measurement. In the case of Test Method A, the following measurement set-up is recommended. Both the rotation mechanism (e.g. stepper motor) and power meter are interfaced to a computer for control and data logging purposes. Ideally, the controller software can manipulate the direction of rotation, speed and step increments of the stepper motor. During the 360° continuous rotation, the instrumentation should be capable of collecting at least one data point for every 2,5 degrees of rotation, which equates to a response time of better than 100 ms for the measuring instrumentation.

5.1.4 Test load

The test load or weight should be applied to the end of the test cord. The test load is defined in Annex A.

5.2 Test procedures for Tx interfaces

5.2.1 Test procedures

The test is conducted with a suitable fixture, as illustrated in Figure 1. (Figure 1 is an example of the case using a 1,25 mm ferrule connector.) This example utilizes an optical transceiver (Tx) port or other connectorized optical source. The simulated wiggle test cord (fibre cord and connector) is flexed at the point of entry to the connector on the DUT by applying a load in the form of a weight to the fibre while rotating the test fixture. The test is conducted as follows.

5.2.2 Set-up

Mount the connector/optical assembly as shown in Figure 1 and connect the simulated wiggle test cord from the device output port/Tx port to the power meter. If the DUT contains more than one port (for example a Tx port and an Rx port in the case of a transceiver), only one port should be analysed at a time. Hence, only a single simulated wiggle test cord should be connected to the device at any given time.

5.2.3 Initial measurement

Without applying any load and without rotating the fixture, measure and record the output power of the DUT when mounted in the fixture. The power meter should be reset at this point so that all measurements are normalized around this output level.

5.2.4 Apply load and rotate

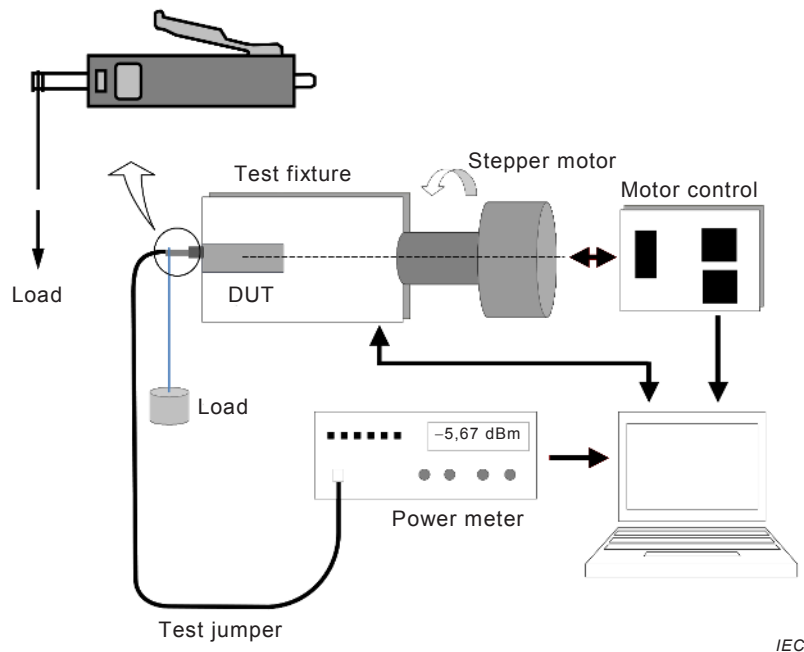
Apply the appropriate load to the simulated wiggle test cord as shown in Figure 1.

The fixture/DUT to which the load is attached shall rotate both clockwise and anticlockwise. Allow for a settling time of 10 s after the load is attached or disturbed and before and after each rotation.

With a 360° rotation at a speed of 4 r/min (or less), record the power meter readings after the clockwise and anticlockwise rotations have completed.

5.2.5 Wiggle loss

The wiggle loss is defined as the maximum peak-to-peak delta of the measured power during the loading process of 5.2.4, including the initial measurement value of 5.2.3.



NOTE The details of the loading point are described in Annex C.

Figure 1 – Equipment setup of Method A for Tx interfaces

5.3 Test procedures for Rx interfaces and optical receptors

5.3.1 Test procedures

In the case of Rx interfaces or optical receptors (for example a transceiver Rx connector test or where the DUT does not contain a light source), the DUT is mounted in a test fixture as shown in Figure 2, with one of the following test methods applied. (Figure 2 is an example of the case using a 1,25 mm ferrule connector.)

5.3.2 LOS indicator method

The procedure is as follows:

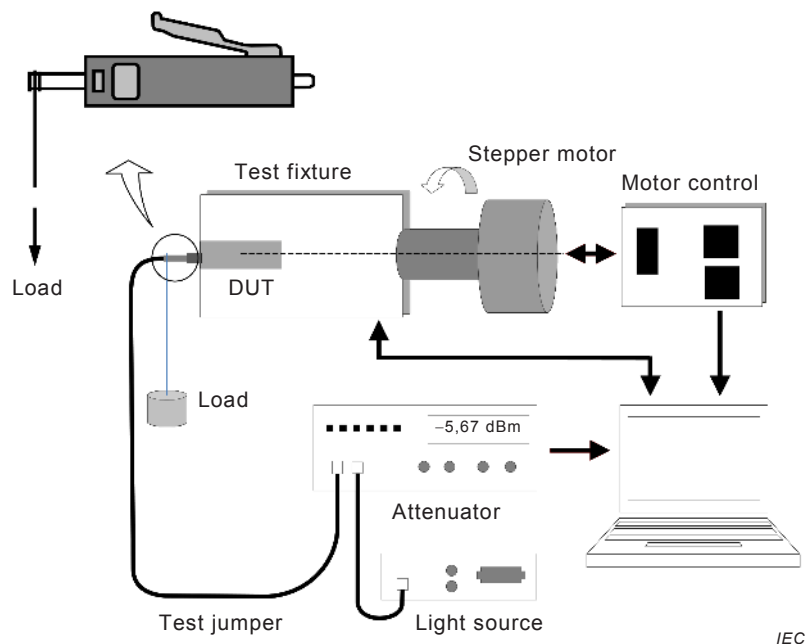
- adjust the input power to the receptacle to find the LOS threshold;
- increase the input power by 1,5 dB;
- apply the relevant load specified in Table A.1 and rotate the test fixture from 0° to 360° with continuous motion in clockwise and anticlockwise directions;
- if LOS is detected, then the device fails the test; if no LOS is detected, the device passes.

5.3.3 Receiver optical power monitor method

The receiver optical power monitor method can be implemented on transceivers or other optical receptors that support digital diagnostic monitoring. The robustness of the optical port to wiggle is determined by monitoring changes in the received optical power reported by the digital diagnostics. The procedure is as follows:

- set the input power to the receiver to a level at which the receiver power monitor is in its most accurate range;
- apply the relevant load specified in Table A.1 and rotate the test fixture from 0° to 360° with continuous motion in clockwise and anticlockwise directions while monitoring the digital diagnostics for receiver optical power;

- c) record the maximum change in receiver optical power in dB; wiggle loss is defined as the maximum peak-to-peak delta of the measured power during the measurement from a) through b).



NOTE The details of the loading point are described in Annex C.

Figure 2 – Equipment set-up of Method A for Rx interfaces and optical receptors

6 Test Method B

6.1 Apparatus

6.1.1 General

An example of the test apparatus is shown in Figure 3. Details of the elements are given in the following subclauses. Measurement wavelength is in accordance with the wavelength of transceiver specifications, and the test data is obtained at room temperature.

6.1.2 Test fixture and rotation mechanism

The exact details of the test fixture will depend on the type of DUT. For example, if an optical transceiver is being evaluated, a test board capable of securing and powering up the transceiver may be used. In this case, it is centre-mounted to the spindle of a rotation mechanism so that it can be rotated symmetrically over 360°. In Test Method B, the rotation function is not absolutely necessary if the test fixture enables measurement at every 90° interval around the spindle (0°, 90°, 180°, 270°).

6.1.3 Test cord

In order to simulate the wiggle loss mechanism of Case B, normal patchcords which satisfy both interface standards (see IEC 61754 series) and performance standards (see IEC 61753 series) are used in Method B.

In Figure 3, the test cord is connected to the transceiver under test. The test jumper has a weight applied to the end of test cord to stress the connection to the DUT. The test cord is connected to a power meter at the other end to record the transmitted power variations.

6.1.4 Power meter

The power meter is used to measure variations in the coupled power from the DUT. It is set-up to record the maximum peak-to-peak excursions in power level normalized around the initial no-load measurement.

6.1.5 Test load

The test load or weight shall be applied to the end of the test cord. The test load is defined in Annex A.

6.2 Test procedures for Tx interfaces

6.2.1 Test procedures

The test is conducted with a suitable fixture, as illustrated in Figure 3 (Figure 3 is an example of the case using a 1,25mm ferrule connector.) This example utilizes an optical transceiver (Tx) port or other connectorized optical source. The standard test cord (fibre cord and connector) is flexed at the point of entry to the connector on the DUT by applying a load in the form of a weight to the fibre while rotating the test fixture. The continuous rotation mechanism is not absolutely necessary if the test fixture enables measurement at each of the 90° directions around the spindle (0°, 90°, 180°, 270°). The test is conducted as follows.

6.2.2 Set-up

Mount the connector/optical assembly as shown in Figure 3 and connect a standard test cord from the device output port/Tx port to the power meter. If the DUT contains more than one port (for example, a Tx port and an Rx port in the case of a transceiver), only one port should be analysed at a time. Hence, only a single standard test cord should be connected to the device at any given time.

6.2.3 Initial measurement

Without applying any load and without rotating the fixture, measure and record the output power of the DUT when mounted in the fixture. The power meter should be reset at this point so that all measurements are normalized around this output level.

6.2.4 Apply load

Apply the appropriate load as specified in Table A.2 to the standard test cord as shown in Figure 3.

6.2.5 Measurement

Record the power meter after the positioning of four angular directions (0°, 90°, 180°, 270°) has completed.

6.2.6 Wiggle loss

The wiggle loss is defined as the maximum peak-to-peak delta of the measured power during the measurement of 6.2.5 including the initial measurement value of 6.2.3.

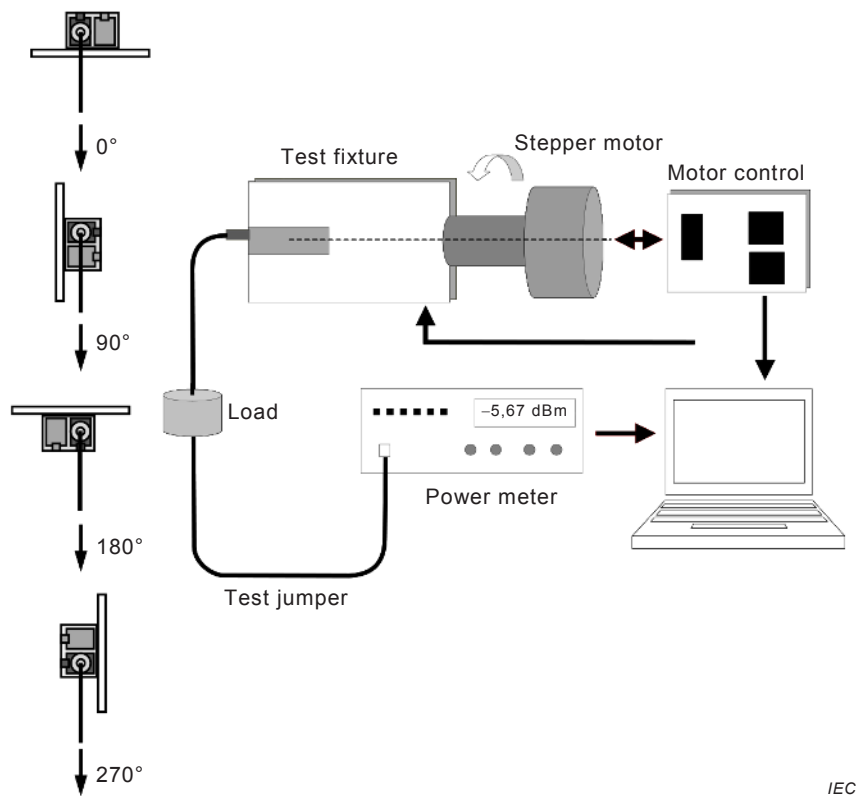


Figure 3 – Equipment set-up of Method B for Tx interfaces

6.3 Test procedures for Rx interfaces and optical receptors

6.3.1 Test procedures

In the case of Rx interfaces or optical receptors (for example, a transceiver Rx connector test or where the DUT does not contain a light source), the DUT is mounted in a test fixture as shown in Figure 4, and one of the following test methods is applied. (Figure 4 is an example of the case using a 1,25 mm ferrule.)

6.3.2 LOS-indicator method

The procedure is as follows:

- adjust the input power to the receptacle to find the LOS threshold;
- increase the input power by 1,5 dB;
- apply the relevant load specified in Table A.2 and rotate the test fixture at angles of 0°, 90°, 180° and 270°;
- if LOS is detected, then the device fails the test. If no LOS is detected, the device passes.

6.3.3 Receiver optical power monitor method

The receiver optical power monitor method can be implemented on transceivers or other optical receptors that support digital diagnostic monitoring. The robustness of the optical port to wiggle is determined by monitoring changes in the received optical power reported by the digital diagnostics.

- set the input power to the receiver to a level at which the receiver power monitor is in its most accurate range;
- apply the relevant load specified in Table A.2 and rotate the test fixture at angles of 0°, 90°, 180° and 270° while monitoring the digital diagnostics for receiver optical power;

- c) record the maximum change in receiver optical power in dB. Wiggle loss is defined as the maximum peak-to-peak delta of the measured power during the measurement from a) to b).

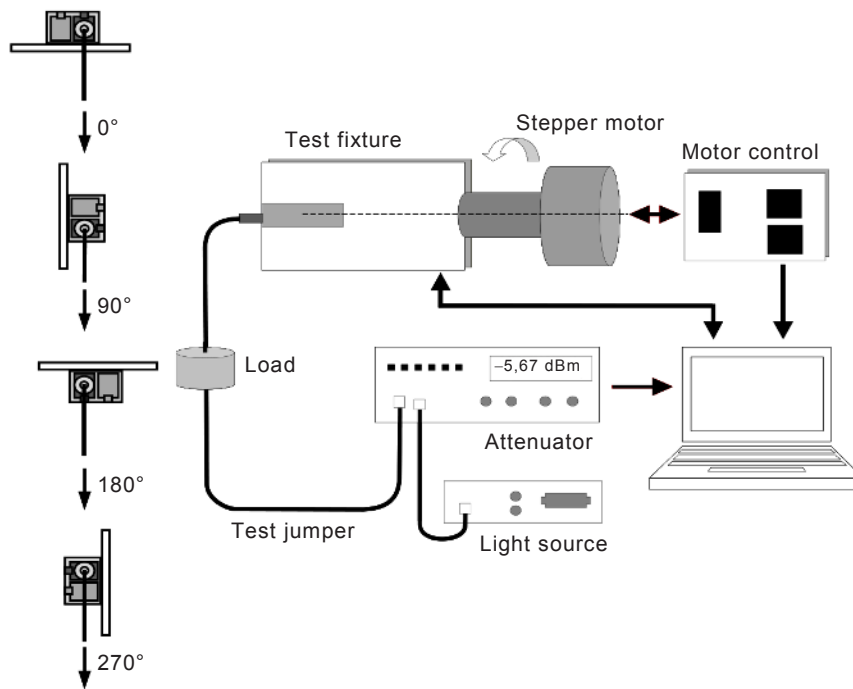


Figure 4 – Equipment set-up of Method B for Rx interface and optical receptors

7 Test results

The test results shall provide the following details:

- a) The method used (Method A and/or Method B)
- b) The load value
- c) Wiggle loss
- d) Pass or fail
- e) Receiver optical power variation
- f) Sample size
- g) Number of cords

Annex A (normative)

Load requirements

See Table A.1 and Table A.2.

A.1 Loads for Method A

Table A.1 – Method A: Loads applied for devices using connector cords with 1,25 mm ferrule and 2,5 mm ferrule

Connector type	Load N	Angles °
LC	1,5	0 to 360
SC	0,5	0 to 360

A.2 Loads for Method B

Table A.2 – Method B: Loads applied for devices using connector cords with 1,25 mm ferrule and 2,5 mm ferrule

Connector type	Load N	Angles °
LC	4,5	0, 90, 180, 270
SC	4,5	0, 90, 180, 270

Annex B (normative)

Summary of test conditions

See Table B.1 and Table B.2.

Table B.1 – Summary of test conditions for Method A (normative)

Connector style	Port (Rx/Tx)	Measurement parameters	Test cord	Load N	Sample size	Number of cords	Failures allowed	Pass/fail criteria
LC (single-mode)	Tx	Tx power	Clause C.1	1,5	11	5	0	Max wiggle loss <1,5 dB
	Rx	LOS power delta or bit errors						Depends on method used: no LOS or received power delta <1,5 dB
SC (single-mode)	Tx	Tx power	Clause C.2	0,5	11	5	0	Max wiggle loss <1,5 dB
	Rx	LOS power delta or bit errors						Depends on method used: no LOS or received power delta <1,5 dB

Table B.2 – Summary of test conditions for Method B (normative)

Connector style	Port (Rx/Tx)	Measurement parameters	Test cord	Load N	Sample size	Number of cords	Failures allowed	Pass/fail criteria
LC (single-mode)	Tx	Tx power	Clause C.1	4,5	11	5	0	Max wiggle loss <1,5 dB
	Rx	LOS, power delta or bit errors						Depends on method used: no LOS or received power delta <1,5 dB
SC (single-mode)	Tx	Tx power	Clause C.2	4,5	11	5	0	Max wiggle loss <1,5 dB
	Rx	LOS power delta or bit errors						Depends on method used: no LOS or received power delta <1,5 dB

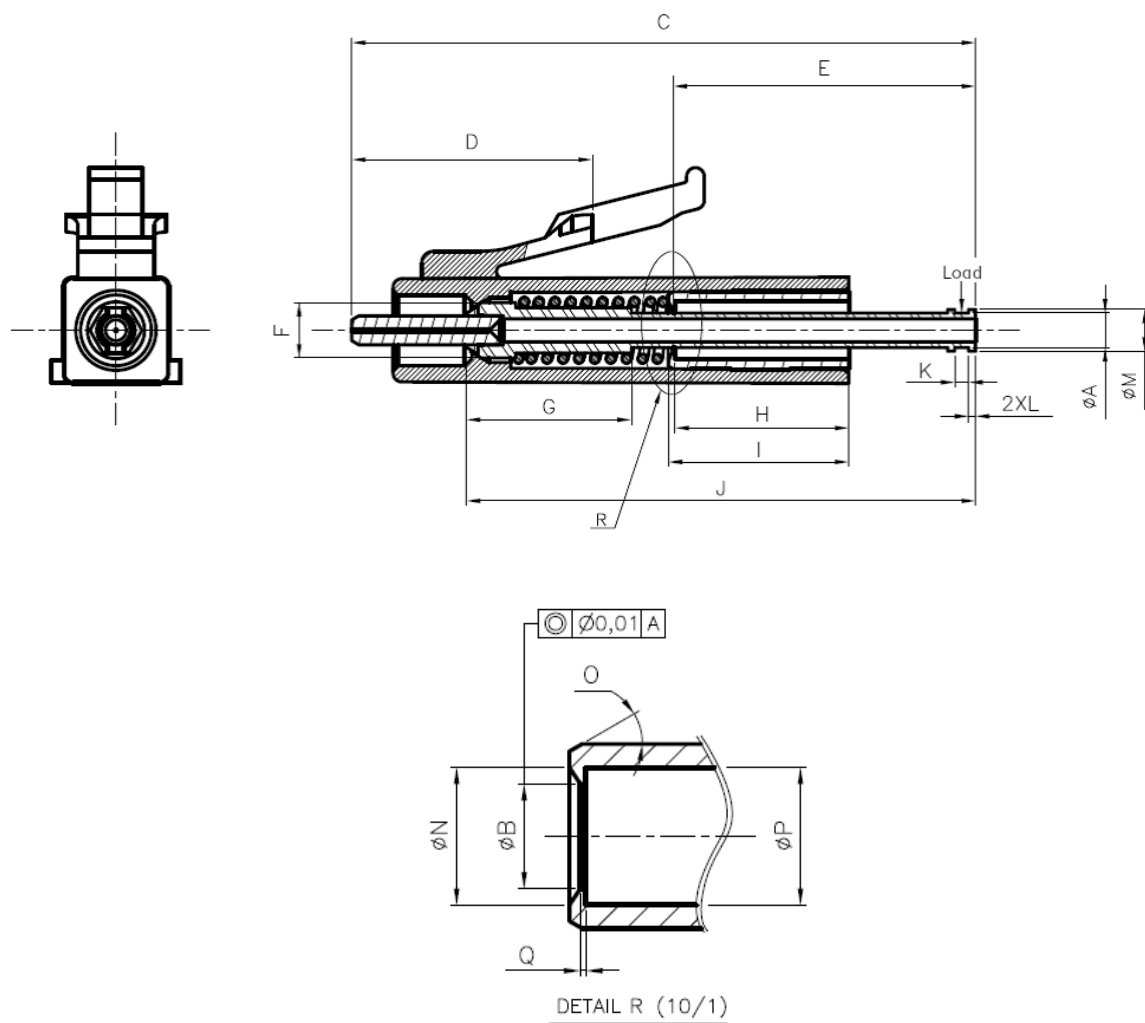
Annex C (normative)

Characteristics of the test cord

See Figure C.1, Figure C.2, Table C.1, Table C.2, Table C.3 and Table C.4.

Table C.1 – Wiggle test cord specification (LC connector)

Test method	Specifications for wiggle test cord
Method A	The details of this test cord are in Figure C.1 and Table C.2
Method B (standard test cord)	IEC 61753-021-6



IEC

Figure C.1 – Wiggle test cord interface (LC connector)

Table C.2 – Dimensions of the wiggle test cord interface

Reference	Dimensions		Notes
	Minimum	Maximum	
A	1,49 mm	1,51 mm	
B	1,89 mm	1,91 mm	
C	26,85 mm	27,05 mm	
D	10,3 mm	10,5 mm	
E	12,97 mm	13,17 mm	
F	2,35 mm	2,45 mm	
G	7,03 mm	7,23 mm	
H	7,46 mm	7,54 mm	
I	7,76 mm	7,84 mm	
J	21,9 mm	22,1 mm	
K	0,5 mm	0,7 mm	
L	0,2 mm	0,4 mm	
M	1,75 mm	1,85 mm	
N	2,46 mm	2,54 mm	
O	25°	35°	Degrees
P	2,46 mm	2,54 mm	
Q	0,06 mm	0,14 mm	

NOTE The interface dimensions other than those specified in Table C.2 are compliant with IEC 61754-20.

Table C.3 – Wiggle test cord specification (SC connector)

Test method	Specifications for wiggle test cord
Method A	The details of this test cord are in Figure C.2 and Table C.4
Method B (standard test cord)	IEC 61753-021-6

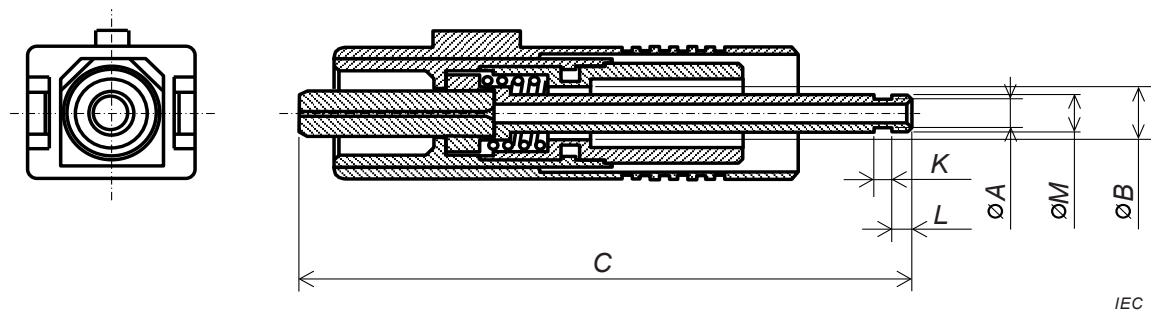
**Figure C.2 – Wiggle test cord interface (SC connector)**

Table C.4 – Dimensions of the wiggle test cord interface

Reference	Dimensions mm		Notes
	Minimum	Maximum	
A	1,49	1,51	
B	2,8	3,0	
C	32,5	33,5	
K	0,5	0,7	
L	0,4	0,8	
M	1,75	1,85	

NOTE The interface dimensions other than those specified in Table C.4 are compliant with IEC 61754-4.

Annex D (normative)

Floating tolerance

In order to control the loss induced by wiggle, it is necessary to keep the accurate relative positioning of the ferrule in the housing. This is true even in the case where external housing deformation is caused by the optical cable bending, as shown in Figure D.1. In this situation, the ferrule floating mechanism called “floating tolerance” is necessary. The precise dimensions of this tolerance are not quantified in this standard as they depend upon the design, construction and materials of both connector and housing.

However, if the floating tolerance is not sufficient, the ferrule comes into contact with housing as the deformation increases causing wiggle loss. Therefore guaranteeing sufficient floating tolerance is required by the detailed design of the housing and/or connector in order to meet the performance requirements of this test method.

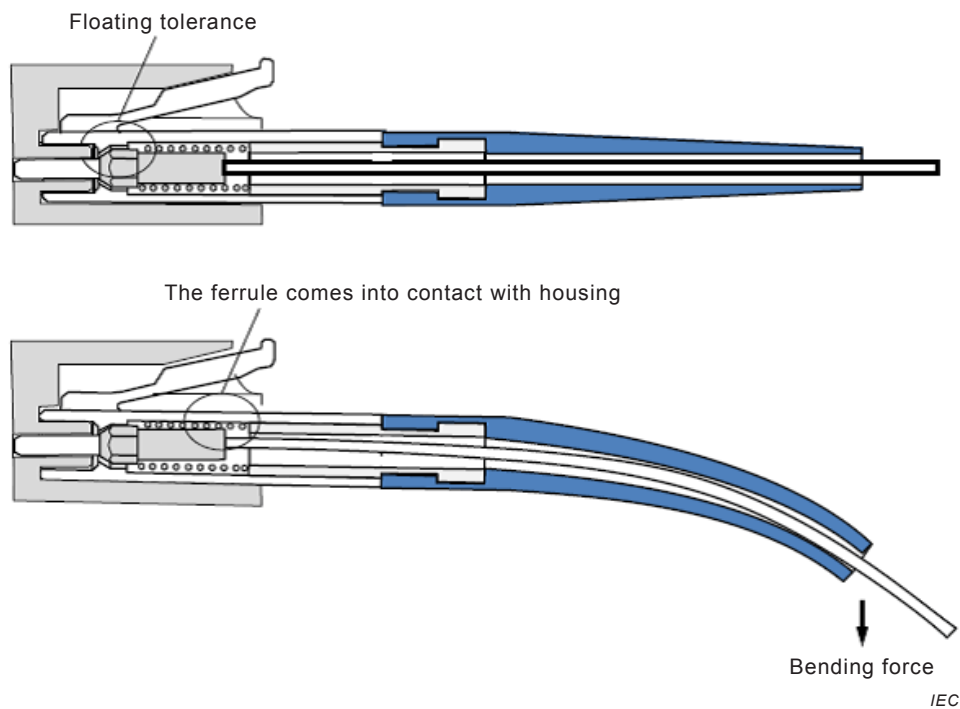


Figure D.1 – Floating tolerance

Annex E (informative)

Load value difference for connector type in Method A

As specified in Table A.1, there is a specified load value difference in test Method A, depending on the type of connector. The reason for this difference comes from the effective torque load difference between the two test cords specified in Figure C.1 and Figure C.2.

In the case of the SC type test cord, the stiffness of the split sleeve is sufficient enough to apply some torque to the test ferrule and the stable measurement can be achievable. However, the stiffness of the $\phi 1,25$ split sleeve is lower than that of the $\phi 2,5$ split sleeve, and it is not sufficient enough to apply some torque to the test ferrule. If the split sleeve of $\phi 1,25$ is applied to the test, the results would be very unstable. To stabilize the wiggle test result for the LC type, a projection at the inside wall of the outer cylindrical pipe (around the R area in Figure E.1 (a)) is needed to relax torque. With this projection (R area), the effective torque length between the load point and the work point will be $S1$ in Figure E.1 (a). On the other hand, in the case of the SC type test cord, there is no projection inside the pipe, and this effective torque length is equivalent to the dimension $S2$ shown in Figure E.1 (b). Dimension $S2$ is three times as long as $S1$, and this leads to the specified load difference between LC and SC.

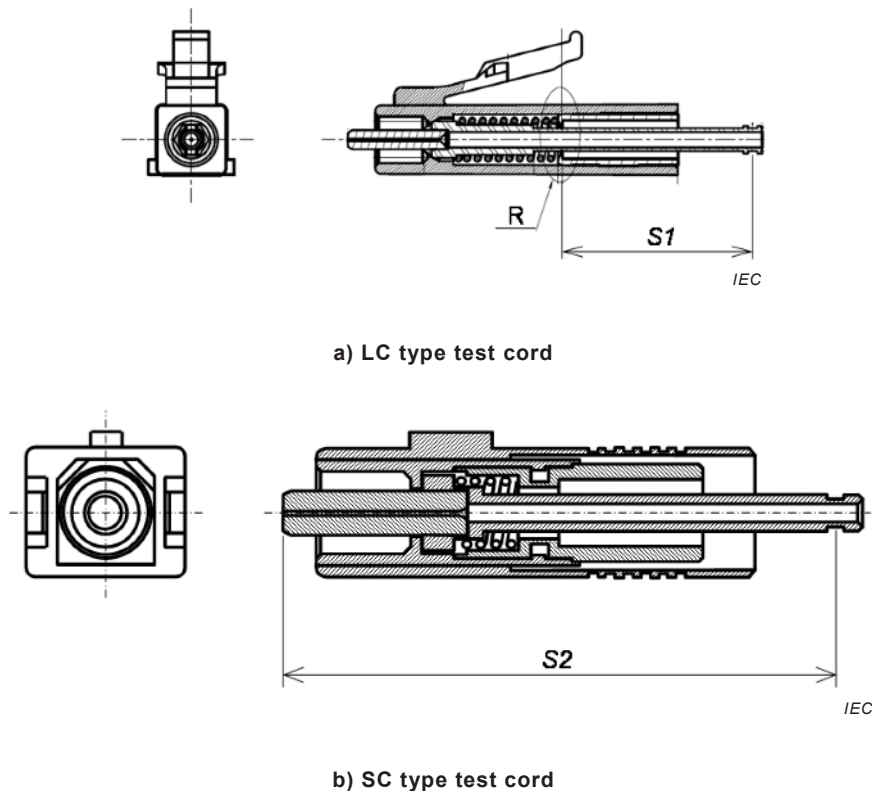


Figure E.1 – Floating tolerance

Bibliography

IEC 61300 (all parts), *Fibre optic interconnecting devices and passive components – Basic test and measurement procedures*

IEC 61754-4, *Fibre optic interconnecting devices and passive components – Fibre optic connector interfaces – Part 4: Type SC connector family*

IEC 61754-20, *Fibre optic interconnecting devices and passive components – Fibre optic connector interfaces – Part 20: Type LC connector family*

IEEE 802.3, Carrier sense multiple access with collision detection (CSMA/CD) access method and physical layer specifications

LC Product Lucent Technologies, 640-252-056 Issue 1 September 05, Specification

Telcordia GR-253, *Synchronous Optical Network (SONET) Transport Systems*

Telcordia GR-326, *Generic Requirements for Single-mode Optical Connectors and Jumper Assemblies*

Telcordia GR-1435, *Generic Requirements for Multi Fiber Optical Connectors*

British Standards Institution (BSI)

BSI is the national body responsible for preparing British Standards and other standards-related publications, information and services.

BSI is incorporated by Royal Charter. British Standards and other standardization products are published by BSI Standards Limited.

About us

We bring together business, industry, government, consumers, innovators and others to shape their combined experience and expertise into standards-based solutions.

The knowledge embodied in our standards has been carefully assembled in a dependable format and refined through our open consultation process. Organizations of all sizes and across all sectors choose standards to help them achieve their goals.

Information on standards

We can provide you with the knowledge that your organization needs to succeed. Find out more about British Standards by visiting our website at bsigroup.com/standards or contacting our Customer Services team or Knowledge Centre.

Buying standards

You can buy and download PDF versions of BSI publications, including British and adopted European and international standards, through our website at bsigroup.com/shop, where hard copies can also be purchased.

If you need international and foreign standards from other Standards Development Organizations, hard copies can be ordered from our Customer Services team.

Subscriptions

Our range of subscription services are designed to make using standards easier for you. For further information on our subscription products go to bsigroup.com/subscriptions.

With **British Standards Online (BSOL)** you'll have instant access to over 55,000 British and adopted European and international standards from your desktop. It's available 24/7 and is refreshed daily so you'll always be up to date.

You can keep in touch with standards developments and receive substantial discounts on the purchase price of standards, both in single copy and subscription format, by becoming a **BSI Subscribing Member**.

PLUS is an updating service exclusive to BSI Subscribing Members. You will automatically receive the latest hard copy of your standards when they're revised or replaced.

To find out more about becoming a BSI Subscribing Member and the benefits of membership, please visit bsigroup.com/shop.

With a **Multi-User Network Licence (MUNL)** you are able to host standards publications on your intranet. Licences can cover as few or as many users as you wish. With updates supplied as soon as they're available, you can be sure your documentation is current. For further information, email bsmusales@bsigroup.com.

BSI Group Headquarters

389 Chiswick High Road London W4 4AL UK

Revisions

Our British Standards and other publications are updated by amendment or revision.

We continually improve the quality of our products and services to benefit your business. If you find an inaccuracy or ambiguity within a British Standard or other BSI publication please inform the Knowledge Centre.

Copyright

All the data, software and documentation set out in all British Standards and other BSI publications are the property of and copyrighted by BSI, or some person or entity that owns copyright in the information used (such as the international standardization bodies) and has formally licensed such information to BSI for commercial publication and use. Except as permitted under the Copyright, Designs and Patents Act 1988 no extract may be reproduced, stored in a retrieval system or transmitted in any form or by any means – electronic, photocopying, recording or otherwise – without prior written permission from BSI. Details and advice can be obtained from the Copyright & Licensing Department.

Useful Contacts:

Customer Services

Tel: +44 845 086 9001

Email (orders): orders@bsigroup.com

Email (enquiries): cservices@bsigroup.com

Subscriptions

Tel: +44 845 086 9001

Email: subscriptions@bsigroup.com

Knowledge Centre

Tel: +44 20 8996 7004

Email: knowledgecentre@bsigroup.com

Copyright & Licensing

Tel: +44 20 8996 7070

Email: copyright@bsigroup.com



...making excellence a habit.™