

BS EN 62087-1:2016



BSI Standards Publication

Audio, video, and related equipment — Determination of power consumption

Part 1: General

bsi.

National foreword

This British Standard is the UK implementation of EN 62087-1:2016. It is identical to IEC 62087-1:2015. Together with BS EN 62087-2, BS EN 62087-3:2016, BS EN 62087-4:2016, BS EN 62087-5:2016 and BS EN 62087-6:2015 it supersedes BS EN 62087:2012 which will be withdrawn on 19 February 2019.

The UK participation in its preparation was entrusted to Technical Committee EPL/100, Audio, video and multimedia systems and equipment.

A list of organizations represented on this committee can be obtained on request to its secretary.

This publication does not purport to include all the necessary provisions of a contract. Users are responsible for its correct application.

© The British Standards Institution 2016.

Published by BSI Standards Limited 2016

ISBN 978 0 580 82953 6

ICS 33.160.10

Compliance with a British Standard cannot confer immunity from legal obligations.

This British Standard was published under the authority of the Standards Policy and Strategy Committee on 30 April 2016.

Amendments/corrigenda issued since publication

Date	Text affected
------	---------------

EUROPEAN STANDARD

EN 62087-1

NORME EUROPÉENNE

EUROPÄISCHE NORM

February 2016

ICS 33.160.10

Supersedes EN 62087:2012 (partially)

English Version

**Audio, video, and related equipment - Determination of power
consumption - Part 1: General
(IEC 62087-1:2015)**

Appareils audio, vidéo et matériel connexe - Détermination
de la consommation de puissance - Partie 1: Généralités
(IEC 62087-1:2015)

Messverfahren für die Leistungsaufnahme von Audio-,
Video- und verwandten Geräten - Teil 1: Allgemeines
(IEC 62087-1:2015)

This European Standard was approved by CENELEC on 2015-07-10. CENELEC members are bound to comply with the CEN/CENELEC Internal Regulations which stipulate the conditions for giving this European Standard the status of a national standard without any alteration.

Up-to-date lists and bibliographical references concerning such national standards may be obtained on application to the CEN-CENELEC Management Centre or to any CENELEC member.

This European Standard exists in three official versions (English, French, German). A version in any other language made by translation under the responsibility of a CENELEC member into its own language and notified to the CEN-CENELEC Management Centre has the same status as the official versions.

CENELEC members are the national electrotechnical committees of Austria, Belgium, Bulgaria, Croatia, Cyprus, the Czech Republic, Denmark, Estonia, Finland, Former Yugoslav Republic of Macedonia, France, Germany, Greece, Hungary, Iceland, Ireland, Italy, Latvia, Lithuania, Luxembourg, Malta, the Netherlands, Norway, Poland, Portugal, Romania, Slovakia, Slovenia, Spain, Sweden, Switzerland, Turkey and the United Kingdom.



European Committee for Electrotechnical Standardization
Comité Européen de Normalisation Electrotechnique
Europäisches Komitee für Elektrotechnische Normung

CEN-CENELEC Management Centre: Avenue Marnix 17, B-1000 Brussels

European foreword

The text of document 100/2466/FDIS, future edition 1 of IEC 62087-1, prepared by Technical Area 12 “AV energy efficiency and smart grid applications” of IEC/TC 100 “Audio, video and multimedia systems and equipment” was submitted to the IEC-CENELEC parallel vote and approved by CENELEC as EN 62087-1:2016.

The following dates are fixed:

- latest date by which the document has to be implemented at national level by publication of an identical national standard or by endorsement (dop) 2016-08-19
- latest date by which the national standards conflicting with the document have to be withdrawn (dow) 2019-02-19

This document supersedes EN 62087:2012 (partially).

Attention is drawn to the possibility that some of the elements of this document may be the subject of patent rights. CENELEC [and/or CEN] shall not be held responsible for identifying any or all such patent rights.

Endorsement notice

The text of the International Standard IEC 62087-1:2015 was approved by CENELEC as a European Standard without any modification.

In the official version, for Bibliography, the following notes have to be added for the standards indicated:

IEC 62087 Series	NOTE	Harmonized as EN 62087 Series.
IEC 62087-2	NOTE	Harmonized as EN 62087-2.
IEC 62087-3	NOTE	Harmonized as EN 62087-3.
IEC 62087-4	NOTE	Harmonized as EN 62087-4.
IEC 62087-5	NOTE	Harmonized as EN 62087-5.
IEC 62087-6	NOTE	Harmonized as EN 62087-6.

Annex ZA (normative)

Normative references to international publications with their corresponding European publications

The following documents, in whole or in part, are normatively referenced in this document and are indispensable for its application. For dated references, only the edition cited applies. For undated references, the latest edition of the referenced document (including any amendments) applies.

NOTE 1 When an International Publication has been modified by common modifications, indicated by (mod), the relevant EN/HD applies.

NOTE 2 Up-to-date information on the latest versions of the European Standards listed in this annex is available here: www.cenelec.eu

<u>Publication</u>	<u>Year</u>	<u>Title</u>	<u>EN/HD</u>	<u>Year</u>
IEC 62301 (mod)	2011	Household electrical appliances - Measurement of standby power	EN 50564	2011
IEC 62542	2013	Environmental standardization for electrical and electronic products and systems - Glossary of terms	EN 62542	2013

CONTENTS

FOREWORD	3
INTRODUCTION	5
1 Scope	6
2 Normative references	6
3 Terms, definitions, and abbreviations	6
3.1 Terms and definitions	6
3.2 Abbreviations	7
4 Specification of operating modes and functions	7
5 General method	8
5.1 General conditions	8
5.1.1 Power source	8
5.1.2 Environmental conditions	9
5.1.3 Adjustment of controls	10
5.1.4 Input signals	10
5.1.5 Power measuring instrument	10
5.1.6 Measurement uncertainty	10
5.1.7 Luminance measuring device	10
5.1.8 Illuminance measuring instrument	11
5.2 General measuring procedure	11
6 Determination of power consumption, Off mode	11
7 Verification procedure	11
Annex A (informative) Verification procedure	12
A.1 General	12
A.2 Verification procedure	12
Annex B (informative) Electricity supplies	13
Bibliography	14
Figure A.1 – Flowchart, verification procedure	12
Table 1 – General operating modes and functions	8
Table B.1 – Typical declared electricity supplies for some regions	13

INTERNATIONAL ELECTROTECHNICAL COMMISSION

**AUDIO, VIDEO, AND RELATED EQUIPMENT –
DETERMINATION OF POWER CONSUMPTION –****Part 1: General**

FOREWORD

- 1) The International Electrotechnical Commission (IEC) is a worldwide organization for standardization comprising all national electrotechnical committees (IEC National Committees). The object of IEC is to promote international co-operation on all questions concerning standardization in the electrical and electronic fields. To this end and in addition to other activities, IEC publishes International Standards, Technical Specifications, Technical Reports, Publicly Available Specifications (PAS) and Guides (hereafter referred to as “IEC Publication(s)”). Their preparation is entrusted to technical committees; any IEC National Committee interested in the subject dealt with may participate in this preparatory work. International, governmental and non-governmental organizations liaising with the IEC also participate in this preparation. IEC collaborates closely with the International Organization for Standardization (ISO) in accordance with conditions determined by agreement between the two organizations.
- 2) The formal decisions or agreements of IEC on technical matters express, as nearly as possible, an international consensus of opinion on the relevant subjects since each technical committee has representation from all interested IEC National Committees.
- 3) IEC Publications have the form of recommendations for international use and are accepted by IEC National Committees in that sense. While all reasonable efforts are made to ensure that the technical content of IEC Publications is accurate, IEC cannot be held responsible for the way in which they are used or for any misinterpretation by any end user.
- 4) In order to promote international uniformity, IEC National Committees undertake to apply IEC Publications transparently to the maximum extent possible in their national and regional publications. Any divergence between any IEC Publication and the corresponding national or regional publication shall be clearly indicated in the latter.
- 5) IEC itself does not provide any attestation of conformity. Independent certification bodies provide conformity assessment services and, in some areas, access to IEC marks of conformity. IEC is not responsible for any services carried out by independent certification bodies.
- 6) All users should ensure that they have the latest edition of this publication.
- 7) No liability shall attach to IEC or its directors, employees, servants or agents including individual experts and members of its technical committees and IEC National Committees for any personal injury, property damage or other damage of any nature whatsoever, whether direct or indirect, or for costs (including legal fees) and expenses arising out of the publication, use of, or reliance upon, this IEC Publication or any other IEC Publications.
- 8) Attention is drawn to the Normative references cited in this publication. Use of the referenced publications is indispensable for the correct application of this publication.
- 9) Attention is drawn to the possibility that some of the elements of this IEC Publication may be the subject of patent rights. IEC shall not be held responsible for identifying any or all such patent rights.

International Standard IEC 62087-1 has been prepared by technical area 12: AV energy efficiency and smart grid applications, of IEC technical committee 100: Audio, video and multimedia systems and equipment.

This first edition of IEC 62087-1 together with IEC 62087-2 to IEC 62087-6 cancels and replaces IEC 62087:2011 in its entirety. This edition constitutes a technical revision.

This edition includes the following significant technical changes with respect to Clauses 1 to 5 of IEC 62087:2011.

- It includes new information about operation modes.
- Equipment that includes removable main batteries are now considered.
- Light measuring equipment is now specified.

The text of this standard is based on the following documents:

FDIS	Report on voting
100/2466/FDIS	100/2496/RVD

Full information on the voting for the approval of this standard can be found in the report on voting indicated in the above table.

A list of all parts in the IEC 62087 series, published under the general title *Audio, video, and related equipment – Determination of power consumption*, can be found on the IEC website.

This publication has been drafted in accordance with the ISO/IEC Directives, Part 2.

The committee has decided that the contents of this publication will remain unchanged until the stability date indicated on the IEC website under "<http://webstore.iec.ch>" in the data related to the specific publication. At this date, the publication will be

- reconfirmed,
- withdrawn,
- replaced by a revised edition, or
- amended.

A bilingual version of this publication may be issued at a later date.

IMPORTANT – The 'colour inside' logo on the cover page of this publication indicates that it contains colours which are considered to be useful for the correct understanding of its contents. Users should therefore print this document using a colour printer.

INTRODUCTION

The IEC 62087 series specifies the general conditions and procedure for determining the power consumption of audio, video and related equipment. The specific conditions and procedures for specific types of equipment are specified in IEC 62087-3 to IEC 62087-6. IEC 62087-2 specifies signals and media that may be required to determine the power consumption of some types of equipment.

IEC 62087:2008¹ added methods for determining the On (average) mode power consumption of televisions, based on three video signal sets. These include static, dynamic broadcast-content, and Internet-content signals.

IEC 62087:2011² revised methods for determining the power consumption of set top boxes.

The IEC 62087 series separates IEC 62087 into parts, including this general part which specifies the common conditions and procedures and adds new information about operating modes.

IEC 62087 has been subdivided and currently consists of the following planned or published parts:

- Part 1: General
- Part 2: Signals and media
- Part 3: Television sets
- Part 4: Video recording equipment
- Part 5: Set top boxes
- Part 6: Audio equipment

¹ IEC 62087:2008, *Methods of measurement for the power consumption of audio, video and related equipment*

² IEC 62087:2011, *Methods of measurement for the power consumption of audio, video and related equipment*

AUDIO, VIDEO, AND RELATED EQUIPMENT – DETERMINATION OF POWER CONSUMPTION –

Part 1: General

1 Scope

This part of IEC 62087 specifies the general requirements for the determination of power consumption of audio, video, and related equipment. Requirements for specific types of equipment are specified in additional parts of this series of standards and may supersede the requirements specified in this standard.

Moreover, this part of IEC 62087 defines the different modes of operation which are relevant for determining power consumption.

This standard is only applicable for equipment which can be powered by an external power source. Equipment that includes a non-removable main battery is not covered by this standard. Equipment may include any number of auxiliary batteries.

In order to assess compliance of a specific model of equipment with the declared value, an example verification procedure is provided.

The measuring conditions in this standard represent the normal use of the equipment and may differ from specific conditions, for example as specified in safety standards.

2 Normative references

The following documents, in whole or in part, are normatively referenced in this document and are indispensable for its application. For dated references, only the edition cited applies. For undated references, the latest edition of the referenced document (including any amendments) applies.

IEC 62301:2011, *Household electrical appliances – Measurement of standby power*

IEC 62542:2013, *Environmental standardization for electrical and electronic products and systems – Glossary of terms*

3 Terms, definitions, and abbreviations

3.1 Terms and definitions

For the purposes of this document, the terms and definitions given in IEC 62542:2013, Clause 5, as well as the following apply.

3.1.1

automatic brightness control

feature that senses ambient light conditions and changes display luminance accordingly, possibly reducing power consumption

3.1.2**auxiliary battery**

power storage device that is not capable of powering equipment such that the equipment can provide its primary functions

Note 1 to entry: Memory retention and remote control batteries are examples of auxiliary batteries.

3.1.3**illuminance**

photometric measure of the total luminous flux incident on a surface, per unit area

Note 1 to entry: Illuminance is expressed in lux (lx).

3.1.4**luminance**

photometric measure of the luminous intensity per unit area of light traveling in a given direction

Note 1 to entry: Luminance is expressed in units of candelas per square meter (cd/m^2).

3.1.5**main battery**

power storage device capable of powering equipment such that the equipment can provide its primary functions

3.1.6**model of equipment**

specific design of a product

3.1.7**type of equipment**

class of equipment providing the same main functions

EXAMPLES TV, STB, video recorder.

3.1.8**unit of equipment**

single instance of a model of equipment

3.1.9**unit under test****UUT**

specific unit of equipment subjected to a test

3.2 Abbreviations

ABC Automatic Brightness Control

LMD Luminance Measuring Device

UUT Unit Under Test

4 Specification of operating modes and functions

Table 1 specifies the general operating modes and functions for equipment covered by this standard. More specific information about modes and functions may exist in the equipment-specific parts of this series of standards.

For all modes, main batteries shall be removed for the duration of the measurement procedure as directed in 5.1.1.1.

Table 1 – General operating modes and functions

Power	Mode	Sub-mode	Function(s)	Functional description
0 W	Disconnected	Disconnected	– Disconnected from external power sources and main batteries	The equipment is disconnected or galvanically isolated from all external power sources and main batteries.
≥0 W	Off	Off	– Off	The equipment is connected to an external power source and provides no functions that depend on an external power source. The equipment cannot be switched into any other mode with the remote control unit, or an external or internal signal. Note that some power may be consumed if an EMC filter or other components exist on the source side of the power switch.
>0 W	Partial On	Standby-passive	– Wake on <ul style="list-style-type: none"> • remote control • internal signal 	The equipment is connected to an external power source and does not provide its primary functions. The equipment can be switched into another mode with the remote control unit or an internal signal, but not with an external signal.
		Standby-active, low	– Wake on <ul style="list-style-type: none"> • remote control • internal signal • external signal 	The equipment is connected to an external power source and does not provide its primary functions. The equipment can be switched into another mode with the remote control unit, an internal signal, or an external signal.
		Standby-active, high	– Wake on <ul style="list-style-type: none"> • remote control • internal signal • external signal – Data communications	The equipment is connected to an external power source and does not provide its primary functions. The equipment can be switched into another mode with the remote control unit, an internal signal, or an external signal. Additionally, the equipment is exchanging/receiving data with/from an external source but not as part of a primary function.
	On	Operation	– Operation	The equipment is connected to an external power source and provides its primary functions.

NOTE The operating modes introduced in Table 1 describe the general framework of operating modes applied in this standard. They may be further differentiated for specific types of equipment in the other parts of IEC 62087. The equipment-specific parts of this series of standards do not necessarily describe determination of power consumption for all modes, sub-modes, and functions shown in Table 1.

5 General method

5.1 General conditions

5.1.1 Power source

5.1.1.1 Main battery connection

If the UUT includes a removable main battery, it shall be disconnected and galvanically isolated for the duration of the measurement procedure, unless directed otherwise by another part of this series of standards.

5.1.1.2 External power supplies

Equipment supplied by the manufacturer with an external power supply shall be connected to that external power supply during the measuring procedures.

5.1.1.3 Mains power

For equipment powered by the mains, the equipment shall be powered using the declared voltage and frequency of the region.

The voltage and frequency of the power source shall be reported.

NOTE Annex B provides additional information regarding electricity supplies.

5.1.1.4 Power from other than the mains

For equipment powered by a means other than the mains, the equipment shall be powered at the voltage and frequency as specified by the manufacturer.

The voltage and frequency of the power source shall be reported.

5.1.1.5 Power source, On mode

In On mode, the following requirements apply:

The fluctuation of the voltage supplied shall not exceed $\pm 2\%$. The frequency fluctuation and the harmonic components of the supplied power shall not exceed $\pm 2\%$ and 5% respectively.

5.1.1.6 Power source, Partial On and Off modes

In the Partial On and Off modes, the following requirements apply:

The test voltage shall be the declared voltage $\pm 1\%$ and the test frequency shall be the rated frequency $\pm 1\%$. Where a number of models of equipment are being tested and compared for use in the same country, the declared voltage $\pm 1\%$ and declared frequency $\pm 1\%$ may be used for all tests. Where the test voltage and frequency are not defined by an external standard, the test voltage and the test frequency shall be the declared voltage and the declared frequency of the country for which the power consumption is being determined $\pm 1\%$.

The total harmonic content of the source voltage when supplying the UUT in the specified mode shall not exceed 2% (up to and including the 13th harmonic); harmonic content is defined as the root-mean-square (r.m.s.) summation of the individual components using the fundamental as 100% .

The ratio of peak value to r.m.s. value of the test voltage (i.e. crest factor) shall be between 1,34 and 1,49.

NOTE 1 Annex B provides additional information regarding electricity supplies.

NOTE 2 A stabilized power supply may be required to meet these requirements.

5.1.2 Environmental conditions

The ambient temperature of the test room shall be $23\text{ °C} \pm 5\text{ °C}$, unless otherwise specified in this series of standards. The ambient temperature shall be reported.

5.1.3 Adjustment of controls

The controls not specifically mentioned in this part or other parts of IEC 62087 shall be in the position adjusted by the manufacturer for shipment to the end user. These controls shall remain in this state for the duration of the test unless otherwise directed.

5.1.4 Input signals

For equipment for which the input signals are not explicitly described in this standard, the signals as specified by the manufacturer shall be applied during the test. The input signals used shall be reported.

5.1.5 Power measuring instrument

The measurement shall be carried out directly by means of a wattmeter, a wattmeter with averaging function, or a watthour meter by dividing the reading by the measuring time. If the power consumption is expected to vary over time, such as in the case of a television set displaying a dynamic signal, a watthour meter or a wattmeter with an averaging function shall be used to carry out the measurement.

The sampling rate of the watthour meter or wattmeter with averaging function shall be high enough to achieve an accurate measurement. The manufacturer's specification shall be used to determine the appropriateness of the meter and suitable sampling rates to perform a measurement with the required accuracy.

The power measuring instrument used shall measure the real power consumed regardless of the power factor of the UUT.

In the case of Partial On mode power measurement, it should be ascertained that the wattmeter or the watthour meter is suitable to measure the power consumption of power supplies working in a burst mode with a low duty cycle and the low power consumption levels in the Partial On mode.

For digital power meters a sampling rate of at least 10 kHz is recommended. ("Sampling rate" in many specifications refers to how often the display is updated, and not the actual sampling frequency of the input waveform.) Most digital power meters are believed to meet this requirement. If it is not listed in the manufacturer's specifications, contact the manufacturer.

5.1.6 Measurement uncertainty

Measurements of power of 0,5 W or greater shall be made with an uncertainty of less than or equal to 2 % at the 95 % confidence level. Measurements of power of less than 0,5 W shall be made with an uncertainty of less than or equal to 0,01 W at the 95 % confidence level. The power measuring instrument shall have a resolution of:

- 0,01 W or better for power measurements of 10 W or less;
- 0,1 W or better for power measurements of greater than 10 W up to 100 W;
- 1 W or better for power measurements of greater than 100 W.

For equipment connected to more than one phase, the power measuring instrument shall be equipped to measure the total power of all phases connected.

NOTE For more information about the determination of uncertainty of measurement, refer to IEC 62301:2011, Annex D.

5.1.7 Luminance measuring device

When directed to measure display luminance a luminance measuring device (LMD), which may be of either the contact or non-contact type, shall be used. The LMD shall have an

acceptance (or measuring) angle in the range of 1° to 3°, inclusive. For contact LMDs, the measuring area shall have a diameter of 25 mm or more.

The LMD shall have an accuracy of $\pm 2\% \pm 2$ digits of the digitally displayed value or better.

5.1.8 Illuminance measuring instrument

When directed to illuminate one or more ABC sensors, an illuminance measuring instrument shall be used to adjust the light level to the specified value.

The illuminance measuring instrument shall have an accuracy of $\pm 2\% \pm 2$ digits or better.

5.2 General measuring procedure

The following measuring procedure shall be used, unless otherwise specified in other parts of this series of standards.

Measure the power consumption of the UUT at a time not less than 15 min after it has been switched into the relevant operating mode.

If the power consumption in a certain operating mode has more than one stable level, the measuring time shall be of an appropriate duration to measure the correct average value.

Some models of equipment switch, after a time delay, from a Partial On mode to a mode with a lower (or zero) power consumption. The power consumption before and after the switching occurs shall be determined.

For types of equipment with less functionality than described in the respective parts of IEC 62087, for example playback tape equipment, only the relevant parts of the measuring conditions have to be considered.

The results that are related to power consumption shall be given in watts (W), with a number of relevant digits in accordance with the accuracy of the measurement.

6 Determination of power consumption, Off mode

Power consumption in the Off mode shall be determined as specified in IEC 62301:2011.

NOTE IEC 62301:2011 cites "Off mode" in clauses 1, 3.5, and 5.2, Clause A.2, Table A.1, and Annex C. Additional clauses of IEC 62301:2011 also apply to determining the power consumption in Off mode.

7 Verification procedure

The verification procedure in Annex A may be used to assess compliance of a specific model of equipment with the declared value.

Annex A (informative)

Verification procedure

A.1 General

Assesses compliance of a specific model of equipment with the declared value.

A.2 Verification procedure

To assess compliance of a specific model of equipment with the declared value, the verification procedure of Figure A.1 may be used.

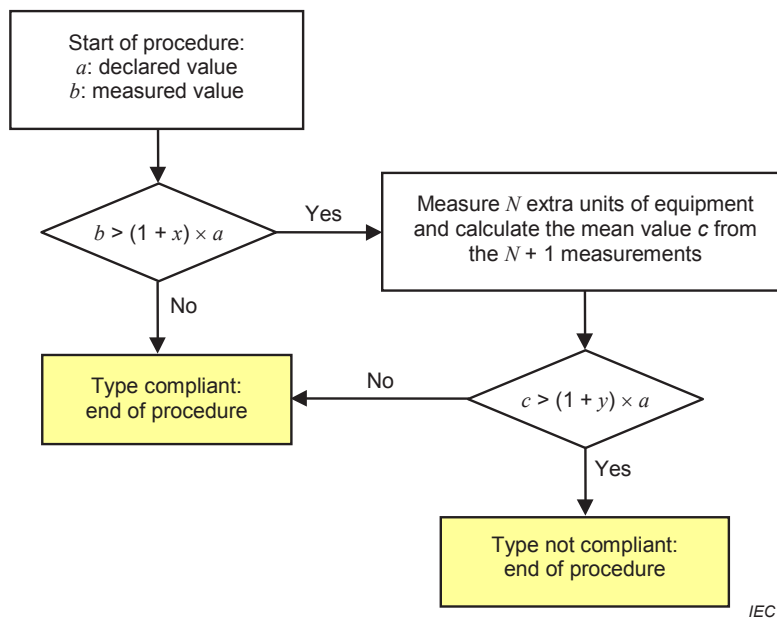


Figure A.1 – Flowchart, verification procedure

The verification procedure is a two-step approach: the measured value of one unit of equipment should not exceed the declared value by x %. If it does, N extra units of equipment are measured and the average value of the $N + 1$ measurements is calculated. This average value should not exceed the declared value by y %.

The average value should be calculated as follows:

$$P_M = 1/(N + 1) \sum_{i=1}^{(N+1)} P_{mi}$$

where

P_{mi} is the power consumption of measurement i ;

P_M is the average power consumption of $N + 1$ measurements.

EXAMPLE Reasonable values for x might be 15 % (0,15), for y might be 10 % (0,10) and for N might be 3.

NOTE Specific or diverging requirements for the verification procedure may be set by local regulations.

Annex B (informative)

Electricity supplies

The electricity supplies for some regions are listed in Table B.1.

Table B.1 – Typical declared electricity supplies for some regions

Country/Region	Declared voltage ^a and frequency
Europe	230 V, 50 Hz
North America	115 V, 60 Hz
Japan ^b	100 V, 50/60 Hz
China	220 V, 50 Hz
Republic of Korea	220 V, 60 Hz
Australia and New Zealand	230 V, 50 Hz
^a Values are for single phase only.	
^b 50 Hz is applicable for the Eastern part; 60 Hz is applicable for the Western part.	

Bibliography

IEC 62087 (all parts), *Audio, video, and related equipment – Determination of power consumption*

IEC 62087-2, *Audio, video, and related equipment – Determination of power consumption – Part 2: Signals and media*

IEC 62087-3, *Audio, video, and related equipment – Determination of power consumption – Part 3: Television sets*

IEC 62087-4, *Audio, video, and related equipment – Determination of power consumption – Part 4: Video recording equipment*

IEC 62087-5, *Audio, video, and related equipment – Determination of power consumption – Part 5: Set top boxes*

IEC 62087-6, *Audio, video, and related equipment – Determination of power consumption – Part 6: Audio equipment*

EN 50564:2011, *Electrical and electronic household and office equipment – Measurement of low power consumption*

British Standards Institution (BSI)

BSI is the national body responsible for preparing British Standards and other standards-related publications, information and services.

BSI is incorporated by Royal Charter. British Standards and other standardization products are published by BSI Standards Limited.

About us

We bring together business, industry, government, consumers, innovators and others to shape their combined experience and expertise into standards-based solutions.

The knowledge embodied in our standards has been carefully assembled in a dependable format and refined through our open consultation process. Organizations of all sizes and across all sectors choose standards to help them achieve their goals.

Information on standards

We can provide you with the knowledge that your organization needs to succeed. Find out more about British Standards by visiting our website at bsigroup.com/standards or contacting our Customer Services team or Knowledge Centre.

Buying standards

You can buy and download PDF versions of BSI publications, including British and adopted European and international standards, through our website at bsigroup.com/shop, where hard copies can also be purchased.

If you need international and foreign standards from other Standards Development Organizations, hard copies can be ordered from our Customer Services team.

Subscriptions

Our range of subscription services are designed to make using standards easier for you. For further information on our subscription products go to bsigroup.com/subscriptions.

With **British Standards Online (BSOL)** you'll have instant access to over 55,000 British and adopted European and international standards from your desktop. It's available 24/7 and is refreshed daily so you'll always be up to date.

You can keep in touch with standards developments and receive substantial discounts on the purchase price of standards, both in single copy and subscription format, by becoming a **BSI Subscribing Member**.

PLUS is an updating service exclusive to BSI Subscribing Members. You will automatically receive the latest hard copy of your standards when they're revised or replaced.

To find out more about becoming a BSI Subscribing Member and the benefits of membership, please visit bsigroup.com/shop.

With a **Multi-User Network Licence (MUNL)** you are able to host standards publications on your intranet. Licences can cover as few or as many users as you wish. With updates supplied as soon as they're available, you can be sure your documentation is current. For further information, email bsmusales@bsigroup.com.

Revisions

Our British Standards and other publications are updated by amendment or revision.

We continually improve the quality of our products and services to benefit your business. If you find an inaccuracy or ambiguity within a British Standard or other BSI publication please inform the Knowledge Centre.

Copyright

All the data, software and documentation set out in all British Standards and other BSI publications are the property of and copyrighted by BSI, or some person or entity that owns copyright in the information used (such as the international standardization bodies) and has formally licensed such information to BSI for commercial publication and use. Except as permitted under the Copyright, Designs and Patents Act 1988 no extract may be reproduced, stored in a retrieval system or transmitted in any form or by any means – electronic, photocopying, recording or otherwise – without prior written permission from BSI. Details and advice can be obtained from the Copyright & Licensing Department.

Useful Contacts:

Customer Services

Tel: +44 845 086 9001

Email (orders): orders@bsigroup.com

Email (enquiries): cservices@bsigroup.com

Subscriptions

Tel: +44 845 086 9001

Email: subscriptions@bsigroup.com

Knowledge Centre

Tel: +44 20 8996 7004

Email: knowledgecentre@bsigroup.com

Copyright & Licensing

Tel: +44 20 8996 7070

Email: copyright@bsigroup.com

BSI Group Headquarters

389 Chiswick High Road London W4 4AL UK

