

BS EN 61466-1:2016



BSI Standards Publication

Composite string insulator units for overhead lines with a nominal voltage greater than 1 000 V

Part 1: Standard strength classes and end fittings

National foreword

This British Standard is the UK implementation of EN 61466-1:2016. It is identical to IEC 61466-1:2016. It supersedes BS EN 61466-1:1997 which is withdrawn.

The UK participation in its preparation was entrusted to Technical Committee PEL/36, Insulators for power systems.

A list of organizations represented on this committee can be obtained on request to its secretary.

This publication does not purport to include all the necessary provisions of a contract. Users are responsible for its correct application.

© The British Standards Institution 2016.

Published by BSI Standards Limited 2016

ISBN 978 0 580 87293 8

ICS 29.080.10

Compliance with a British Standard cannot confer immunity from legal obligations.

This British Standard was published under the authority of the Standards Policy and Strategy Committee on 31 August 2016.

Amendments/corrigenda issued since publication

Date	Text affected
-------------	----------------------

EUROPEAN STANDARD

EN 61466-1

NORME EUROPÉENNE

EUROPÄISCHE NORM

July 2016

ICS 29.080.10; 29.240.20

Supersedes EN 61466-1:1997

English Version

Composite string insulator units for overhead lines with a
nominal voltage greater than 1000 V - Part 1: Standard strength
classes and end fittings
(IEC 61466-1:2016)

Éléments de chaîne d'isolateurs composites pour lignes
aériennes de tension nominale supérieure à 1 000 V -
Partie 1: Classes mécaniques et armatures d'extrémité
normalisées
(IEC 61466-1:2016)

Verbund-Kettenisolatoren für Freileitungen mit einer
Nennspannung über 1000 V - Teil 1: Genormte
Festigkeitsklassen und Endarmaturen
(IEC 61466-1:2016)

This European Standard was approved by CENELEC on 2016-06-22. CENELEC members are bound to comply with the CEN/CENELEC Internal Regulations which stipulate the conditions for giving this European Standard the status of a national standard without any alteration.

Up-to-date lists and bibliographical references concerning such national standards may be obtained on application to the CEN-CENELEC Management Centre or to any CENELEC member.

This European Standard exists in three official versions (English, French, German). A version in any other language made by translation under the responsibility of a CENELEC member into its own language and notified to the CEN-CENELEC Management Centre has the same status as the official versions.

CENELEC members are the national electrotechnical committees of Austria, Belgium, Bulgaria, Croatia, Cyprus, the Czech Republic, Denmark, Estonia, Finland, Former Yugoslav Republic of Macedonia, France, Germany, Greece, Hungary, Iceland, Ireland, Italy, Latvia, Lithuania, Luxembourg, Malta, the Netherlands, Norway, Poland, Portugal, Romania, Slovakia, Slovenia, Spain, Sweden, Switzerland, Turkey and the United Kingdom.



European Committee for Electrotechnical Standardization
Comité Européen de Normalisation Electrotechnique
Europäisches Komitee für Elektrotechnische Normung

CEN-CENELEC Management Centre: Avenue Marnix 17, B-1000 Brussels

European foreword

The text of document 36/378/FDIS, future edition 2 of IEC 61466-1, prepared by IEC/TC 36 "Insulators" was submitted to the IEC-CENELEC parallel vote and approved by CENELEC as EN 61466-1:2016.

The following dates are fixed:

- latest date by which the document has to be implemented at national level by publication of an identical national standard or by endorsement (dop) 2017-03-22
- latest date by which the national standards conflicting with the document have to be withdrawn (dow) 2019-06-22

This document supersedes EN 61466-1:1997.

Attention is drawn to the possibility that some of the elements of this document may be the subject of patent rights. CENELEC [and/or CEN] shall not be held responsible for identifying any or all such patent rights.

Endorsement notice

The text of the International Standard IEC 61466-1:2016 was approved by CENELEC as a European Standard without any modification.

In the official version, for Bibliography, the following note has to be added for the standard indicated :

IEC 61109:2008

NOTE Harmonized as EN 61109:2008.

Annex ZA (normative)

Normative references to international publications with their corresponding European publications

The following documents, in whole or in part, are normatively referenced in this document and are indispensable for its application. For dated references, only the edition cited applies. For undated references, the latest edition of the referenced document (including any amendments) applies.

NOTE 1 When an International Publication has been modified by common modifications, indicated by (mod), the relevant EN/HD applies.

NOTE 2 Up-to-date information on the latest versions of the European Standards listed in this annex is available here: www.cenelec.eu.

<u>Publication</u>	<u>Year</u>	<u>Title</u>	<u>EN/HD</u>	<u>Year</u>
IEC 60120	1984	Dimensions of ball and socket couplings of string insulator units	HD 474 S1	1986
IEC 60471	1977	Dimensions of clevis and tongue couplings of string insulator units		-

CONTENTS

FOREWORD	4
1 Scope	6
2 Normative references	6
3 Mechanical and dimensional characteristics	6
4 Plan of the standard	7
5 Insulator designation	7
6 Marking	7
7 Composite insulator units	7
Annex A (normative) Ball and socket couplings, N series	9
A.1 General	9
A.2 Dimensions	9
A.3 Constructional features of the gauges	9
A.4 Plan of the annex	9
A.5 Designation	9
A.6 Gauges for ball couplings	10
A.7 NOT GO and GO Gauges for socket couplings	14
Annex B (normative) Clevis and tongue couplings, N series	16
B.1 General	16
B.2 Dimensions	16
B.3 Plan of the annex	16
B.4 Designation	16
Annex C (normative) Y-clevis couplings	18
C.1 General	18
C.2 Dimensions	18
C.3 Plan of the annex	18
C.4 Designation	18
Annex D (normative) Eye couplings	20
D.1 General	20
D.2 Dimensions	20
D.3 Plan of the annex	20
D.4 Designation	20
Bibliography	22
Figure 1 – Designation letters of couplings	8
Figure A.1 – Dimensions of NOT GO gauges for ball couplings	10
Figure A.2 – Dimensions of GO gauges for ball couplings	10
Figure A.3 – Dimensions of GO and NOT GO gauges for ball couplings	11
Figure A.4 – Dimensions of NOT GO gauges for ball couplings	12
Figure A.5 – Dimensions of gauges for ball coupling size 16N and 18N	13
Figure A.6 – Dimensions of gauge for ball coupling size 22N	13
Figure A.7 – Dimensions of NOT GO and GO gauges for socket couplings	14
Figure B.1 – Dimensions of clevis and tongue couplings	17
Figure C.1 – Dimensions of Y-clevis gauges	18

Figure C.2 – Dimensions of Y-clevis couplings and gauges 19

Figure D.1 – Dimensions of eye couplings..... 21

Table 1 – Insulator designation 8

Table A.1 – Dimensions of NOT GO gauges for ball couplings..... 10

Table A.2 – Dimensions of GO gauges for ball couplings..... 11

Table A.3 – Dimensions of GO and NOT GO gauges for ball couplings..... 11

Table A.4 – Dimensions of NOT GO gauges for ball couplings..... 12

Table A.5 – Dimensions of gauges for ball couplings..... 13

Table A.6 – Dimensions of NOT GO and GO gauges for socket couplings 15

Table B.1 – Dimensions of clevis and tongue couplings..... 17

Table C.1 – Dimensions of Y-clevis couplings 19

Table D.1 – Dimensions of eye couplings..... 21

INTERNATIONAL ELECTROTECHNICAL COMMISSION

**COMPOSITE STRING INSULATOR UNITS FOR OVERHEAD LINES
WITH A NOMINAL VOLTAGE GREATER THAN 1 000 V –****Part 1: Standard strength classes and end fittings**

FOREWORD

- 1) The International Electrotechnical Commission (IEC) is a worldwide organization for standardization comprising all national electrotechnical committees (IEC National Committees). The object of IEC is to promote international co-operation on all questions concerning standardization in the electrical and electronic fields. To this end and in addition to other activities, IEC publishes International Standards, Technical Specifications, Technical Reports, Publicly Available Specifications (PAS) and Guides (hereafter referred to as "IEC Publication(s)"). Their preparation is entrusted to technical committees; any IEC National Committee interested in the subject dealt with may participate in this preparatory work. International, governmental and non-governmental organizations liaising with the IEC also participate in this preparation. IEC collaborates closely with the International Organization for Standardization (ISO) in accordance with conditions determined by agreement between the two organizations.
- 2) The formal decisions or agreements of IEC on technical matters express, as nearly as possible, an international consensus of opinion on the relevant subjects since each technical committee has representation from all interested IEC National Committees.
- 3) IEC Publications have the form of recommendations for international use and are accepted by IEC National Committees in that sense. While all reasonable efforts are made to ensure that the technical content of IEC Publications is accurate, IEC cannot be held responsible for the way in which they are used or for any misinterpretation by any end user.
- 4) In order to promote international uniformity, IEC National Committees undertake to apply IEC Publications transparently to the maximum extent possible in their national and regional publications. Any divergence between any IEC Publication and the corresponding national or regional publication shall be clearly indicated in the latter.
- 5) IEC itself does not provide any attestation of conformity. Independent certification bodies provide conformity assessment services and, in some areas, access to IEC marks of conformity. IEC is not responsible for any services carried out by independent certification bodies.
- 6) All users should ensure that they have the latest edition of this publication.
- 7) No liability shall attach to IEC or its directors, employees, servants or agents including individual experts and members of its technical committees and IEC National Committees for any personal injury, property damage or other damage of any nature whatsoever, whether direct or indirect, or for costs (including legal fees) and expenses arising out of the publication, use of, or reliance upon, this IEC Publication or any other IEC Publications.
- 8) Attention is drawn to the Normative references cited in this publication. Use of the referenced publications is indispensable for the correct application of this publication.
- 9) Attention is drawn to the possibility that some of the elements of this IEC Publication may be the subject of patent rights. IEC shall not be held responsible for identifying any or all such patent rights.

International Standard IEC 61466-1 has been prepared by IEC technical committee 36: Insulators.

This second edition cancels and replaces the first edition published in 1997. This edition constitutes a technical revision.

This edition includes the following significant technical changes with respect to the previous edition:

- a) Addition of strength classes reflecting UHV practice;
- b) Inclusion of Corrigendum 1:2008 for Y fitting hole dimensions.

The text of this standard is based on the following documents:

FDIS	Report on voting
36/378/FDIS	36/381/RVD

Full information on the voting for the approval of this standard can be found in the report on voting indicated in the above table.

This publication has been drafted in accordance with the ISO/IEC Directives, Part 2.

A list of all parts in the IEC 61466 series, published under the general title *Composite string insulator units for overhead lines with a nominal voltage greater than 1 000 V*, can be found on the IEC website.

The committee has decided that the contents of this publication will remain unchanged until the stability date indicated on the IEC website under "<http://webstore.iec.ch>" in the data related to the specific publication. At this date, the publication will be

- reconfirmed,
- withdrawn,
- replaced by a revised edition, or
- amended.

COMPOSITE STRING INSULATOR UNITS FOR OVERHEAD LINES WITH A NOMINAL VOLTAGE GREATER THAN 1 000 V –

Part 1: Standard strength classes and end fittings

1 Scope

This part of IEC 61466 is applicable to composite string insulator units for a.c. overhead lines with a nominal voltage greater than 1 000 V and a frequency not greater than 100 Hz.

It also applies to insulators of similar design used in substations or on electric traction lines.

This standard applies to string insulator units of composite type with ball, socket, tongue, clevis, Y-clevis or eye couplings, or a combination thereof.

The object of this standard is to prescribe specified values for the mechanical characteristics of the composite string insulator units and define the main dimensions of the couplings to be used on the composite string insulator units in order to permit the assembly of insulators or fittings supplied by different manufacturers and to allow, whenever practical, interchangeability with existing installations.

It also defines a standard designation system for composite string insulator units.

NOTE 1 General definitions and methods of testing are given in IEC 61109.

NOTE 2 Only the dimensions necessary for assembly of the couplings are dealt with in this International Standard. Properties of material and working loads are not specified. The coordination of dimensions of the end-fittings with the strength classes is specified in Clause 7.

2 Normative references

The following documents, in whole or in part, are normatively referenced in this document and are indispensable for its application. For dated references, only the edition cited applies. For undated references, the latest edition of the referenced document (including any amendments) applies.

IEC 60120:1984, *Dimensions of ball and socket couplings of string insulator units*

IEC 60471:1977, *Dimensions of clevis and tongue couplings of string insulator units*

3 Mechanical and dimensional characteristics

Composite string insulator units are standardized by the following specified characteristics:

- specified mechanical load (SML);
- standard couplings.

All dimensions are expressed in millimetres.

The dimensions apply to the finished product after any surface treatment.

4 Plan of the standard

This standard includes eleven standard SML classes designated for use together with 10 different series of couplings as follows.

- Two different standard series of ball couplings, one according to IEC 60120 and one, type N, as shown in Annex A of this standard.
- Two different standard series of socket couplings, one according to IEC 60120 and one, type N, as shown in Annex A of this standard.
- Two different standard series of tongue couplings, one, type L, according to IEC 60471 and one, type N, as shown in Annex B of this standard.
- Two different standard series of clevis couplings, one, type L, according to IEC 60471, and one, type N, as shown in Annex B of this standard
- One standard series of Y clevis couplings, as shown in Annex C of this standard.
- One standard series of eye couplings as shown in Annex D of this standard.

5 Insulator designation

Insulators are designated in Table 1 by letter CS followed by a number indicating the specified mechanical load (SML) in kilonewtons. The letter B, S, T, C, Y or E or a combination thereof which follows specifies a ball, socket, tongue, clevis, Y-clevis or eye coupling, see Figure 1. The following figures specify the size of the coupling. When a combination of couplings are used, the first letter shall always express the coupling on the upper end of the insulator. The upper end of the insulator is defined in relation to the slope of the sheds. In the case of symmetrical profile of the sheds any order of the letters is acceptable.

As examples, possible designations could be:

CS 120 S/B16 indicates a composite insulator having a SML equal to 120 kN, a socket coupling according to IEC 60120, size 16, at the upper end and a ball coupling according to IEC 60120, size 16, at the other end.

CS 120 C/T19N indicates a composite insulator having a SML equal to 120 kN, a clevis coupling according to Annex B, size 19N, at the upper end and a tongue coupling according to Annex B, size 19N, at the other end.

Fittings of the same series conforming to different standards (e.g. IEC 60120 and Annex A of this part of IEC 61466) should be avoided on the same insulator.

6 Marking

Each insulator shall be clearly and indelibly marked with the name or trademark of the manufacturer, the year of manufacture, the specified mechanical load (SML) and a means permitting identification of each of the component parts.

7 Composite insulator units

The values of the specified mechanical loads (SML) for composite string insulators together with corresponding coupling sizes are given in Table 1.

The designation letters of the different designs of couplings which may be used in any combination are shown in Figure 1.

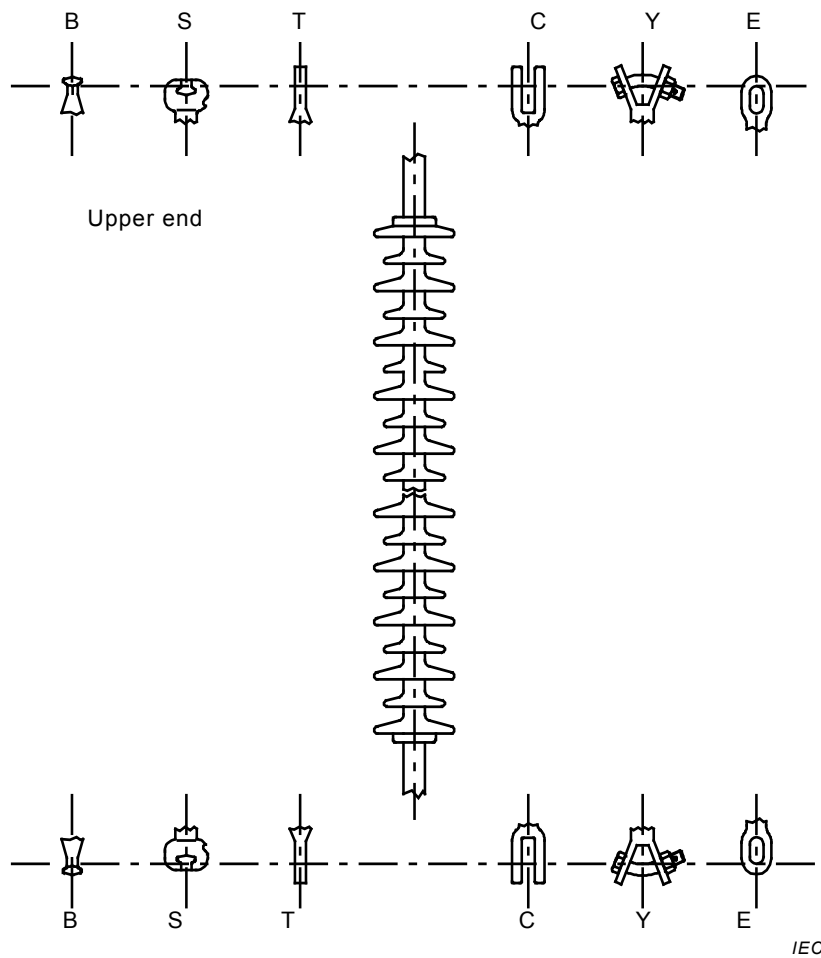


Figure 1 – Designation letters of couplings

Table 1 – Insulator designation

Designation	Specified mechanical load (SML)	Ball and socket		Clevis and tongue		Y-clevis	Eye
		IEC 60120 size	Annex A size	IEC 60471 size	Annex B size	Annex C size	Annex D size
CS 40	40	11	–	–	–	–	–
CS 70	70	16	16N	13L	16N	16 (19)	17 (24)
CS 100	100	16	16N	16L	16N (19N)	19	24
CS 120	120	16	18N	16L	16N (19N)	19	24
CS 160	160	20	22N	19L	19N (22N)	22	25
CS 210	210	20	22N	(19L) 22L	22N	22	25
CS 300	300	24	–	(22L) 25L	–	–	–
CS 400	400	28	–	28L	–	–	–
CS 420	420	28	–	28L	–	–	–
CS 530	530	32	–	32L	–	–	–
CS 550	550	32	–	32L	–	–	–
CS 600	600	–	–	36L	–	–	–

NOTE 1 Non-preferred coupling sizes in brackets.

NOTE 2 Coupling size 36L is not defined in IEC 60471.

Annex A (normative)

Ball and socket couplings, N series

A.1 General

This annex applies to the couplings of composite string insulator units.

This annex defines the dimensions of a standardized series of ball and socket couplings, which permit the replacement of existing insulator sets in accordance with North American practice, and permits the assembly of composite insulator units and fittings supplied by different manufacturers.

A.2 Dimensions

The dimensions for the ball and socket couplings are expressed by dimensions for the GO and NOT GO gauges (see Figures A.1 to A.7).

All dimensions indicated in Tables A.1 to A.6 are given in millimetres and refer to the finished product after surface treatment such as, for instance, hot dip galvanizing.

The outside dimensions of the socket have not been fixed, since they depend on the mechanical characteristics of the material used. Only the dimensions necessary for assembly of the couplings are dealt with in this standard.

In general, the ball is made of forged steel and the socket is made of malleable or ductile cast iron or forged steel. However, other materials may be used if they have mechanical characteristics corresponding to those given in Table 1 of this part of IEC 61466.

NOTE Dimensions are converted from inches.

A.3 Constructional features of the gauges

The choice of material, the hardness, the surface finish, the surface treatment and the method of manufacture are liable to vary from one country to another. Therefore, the following recommendations are given only for general guidance:

- the material shall be non-shrinking, oil-hardening steel;
- the Rockwell hardness number shall be 62 to 63 HRC in order to reduce deformation and wear;
- the surface roughness shall be less than 4 μm ;
- hard chromium plating can, in certain cases, increase resistance to wear.

A.4 Plan of the annex

This annex includes three standard sizes of ball and socket couplings, followed by the letter N, which reflect the North American practice.

A.5 Designation

The ball and socket couplings are designated by the shank diameter, expressed in millimetres, of the ball coupling, followed by the letter N.

A.6 Gauges for ball couplings

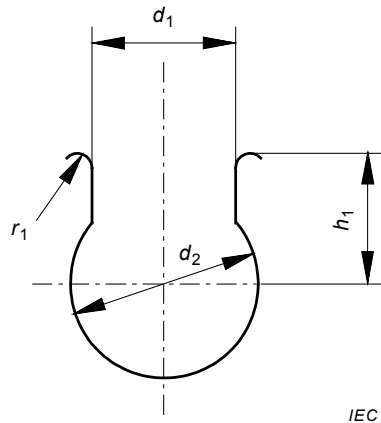


Figure A.1 – Dimensions of NOT GO gauges for ball couplings

Table A.1 – Dimensions of NOT GO gauges for ball couplings

Designated size of ball couplings	Gauge contour	Dimensions according to figure A.1			
		d_1	d_2	h_1	r_1
16N	Min.	15,748	–	–	–
	Nom.	15,748	20,638	14,288	1,588
	Max.	15,753	–	–	–
18N	Min.	17,399	–	–	–
	Nom.	17,399	20,638	14,288	1,588
	Max.	17,404	–	–	–
22N	Min.	21,565	28,448	–	1,473
	Nom.	21,590	28,575	19,050	1,600
	Max.	21,615	28,702	–	1,727

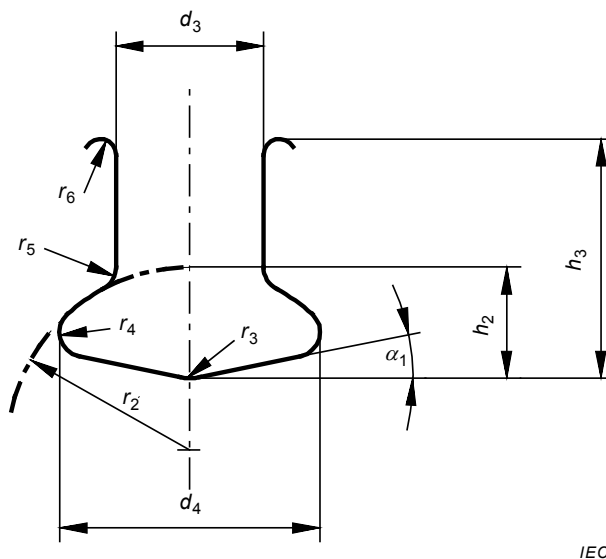
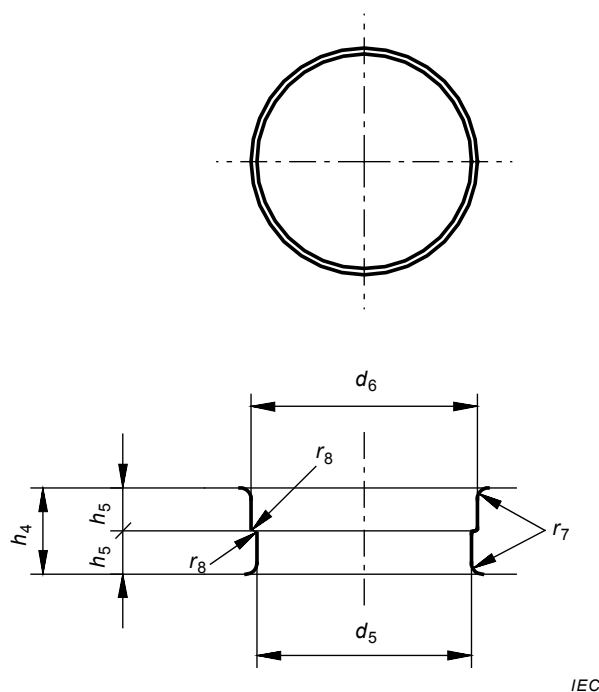


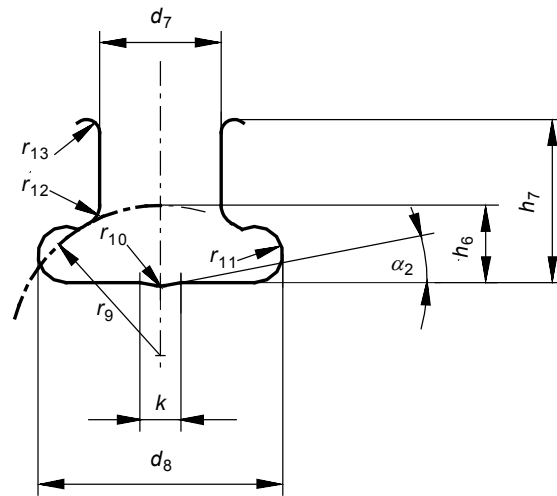
Figure A.2 – Dimensions of GO gauges for ball couplings

Table A.2 – Dimensions of GO gauges for ball couplings

Designated size of ball couplings	Gauge contour	Dimensions according to figure A.2									
		d_3	d_4	h_2	h_3	r_2	r_3	r_4	r_5	r_6	α_1
16N	Min.	18,867	33,325	14,122	30,607	23,241	6,223	2,997	3,048	1,905	–
	Nom.	18,872	33,376	14,224	30,607	23,368	6,350	3,124	3,175	2,032	11,5
	Max.	18,872	33,376	14,224	30,734	23,368	6,477	3,124	3,175	2,159	–
18N	Min.	18,867	33,325	14,122	30,607	23,241	6,223	2,997	3,048	1,905	–
	Nom.	18,872	33,376	14,224	30,607	23,368	6,350	3,124	3,175	2,032	11,5
	Max.	18,872	33,376	14,224	30,734	23,368	6,477	3,124	3,175	2,159	–
22N	Min.	23,647	43,078	18,440	36,525	32,055	3,963	5,004	–	1,905	–
	Nom.	23,673	43,104	18,491	36,576	32,106	4,089	5,055	3,962	2,032	9,5
	Max.	23,698	43,129	18,542	36,627	32,156	4,216	5,105	–	2,159	–

**Figure A.3 – Dimensions of GO and NOT GO gauges for ball couplings****Table A.3 – Dimensions of GO and NOT GO gauges for ball couplings**

Designated size of ball couplings	Gauge contour	Dimensions according to figure A.3					
		d_5	d_6	r_7	r_8	h_4	h_5
16N	Min.	31,598	33,350	–	–	–	–
	Nom.	31,598	33,376	1,588	0,397	12,700	6,350
	Max.	31,623	33,376	–	–	–	–
18N	Min.	31,598	33,350	–	–	–	–
	Nom.	31,598	33,376	1,588	0,397	12,700	6,350
	Max.	31,623	33,376	–	–	–	–
22N	Min.	40,843	43,104	–	–	–	–
	Nom.	40,869	43,129	0,397	0,397	12,700	6,350
	Max.	40,894	43,155	–	–	–	–



IEC

Figure A.4 – Dimensions of NOT GO gauges for ball couplings

Table A.4 – Dimensions of NOT GO gauges for ball couplings

Designated size of ball couplings	Gauge contour	Dimensions according to figure A.4										
		d_7	d_8	h_6	h_7	r_9	r_{10}	r_{11}	r_{12}	r_{13}	k	α_2
16N	Min.	18,923	–	12,573	25,781	23,368	3,175	–	–	1,905	–	–
	Nom.	18,923	38,100	12,573	25,908	23,368	3,302	4,366	3,175	2,032	6,350	11
	Max.	18,928	–	12,675	26,035	23,495	3,429	–	–	2,159	–	–
18N	Min.	18,923	–	12,573	25,781	23,368	3,175	–	–	1,905	–	–
	Nom.	18,923	38,100	12,573	25,908	23,368	3,302	4,366	3,175	2,032	6,350	11
	Max.	18,928	–	12,675	26,035	23,495	3,429	–	–	2,159	–	–
22N	Min.	23,698	47,498	16,713	36,195	32,055	3,175	4,648	–	1,905	–	–
	Nom.	23,724	47,625	16,764	36,322	32,106	3,302	4,775	4,064	2,032	6,350	9,5
	Max.	23,749	47,752	16,815	36,449	32,156	3,429	4,902	–	2,159	–	–

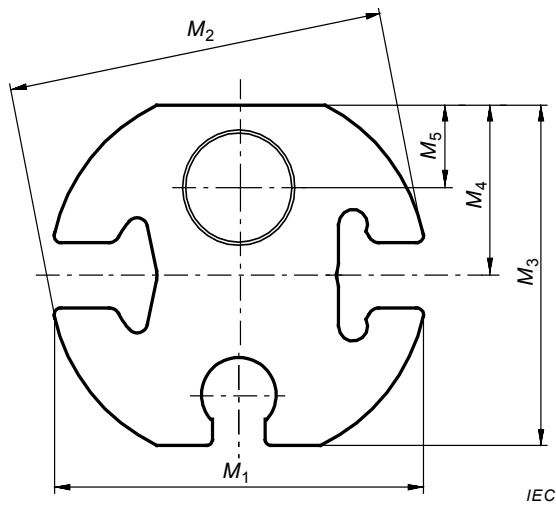


Figure A.5 – Dimensions of gauges for ball coupling size 16N and 18N

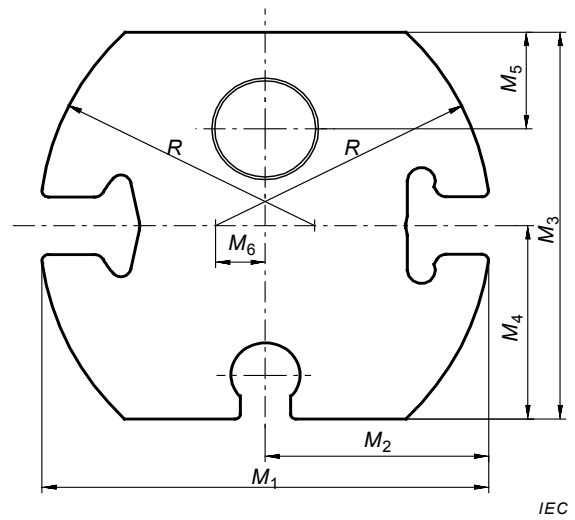


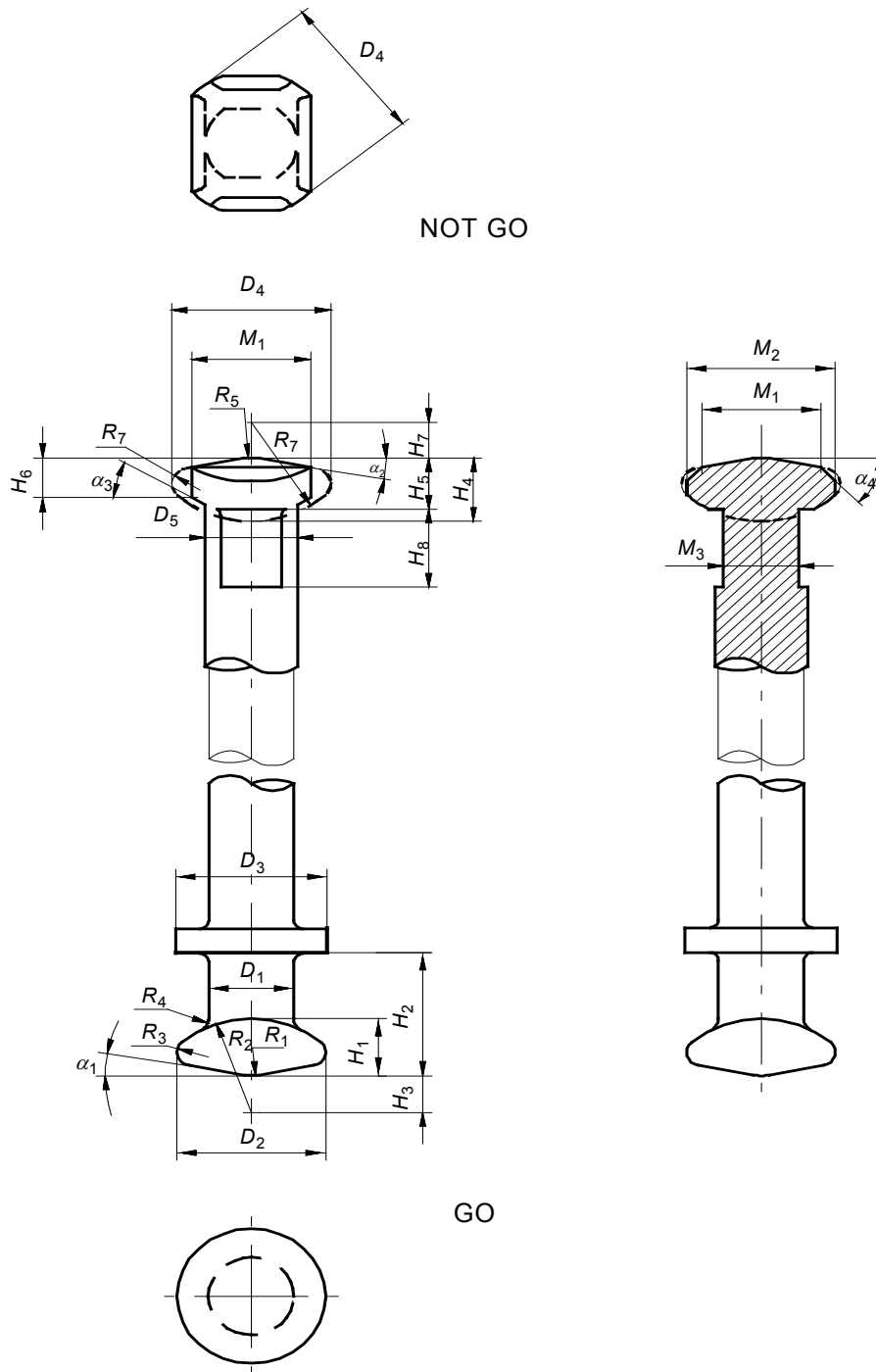
Figure A.6 – Dimensions of gauge for ball coupling size 22N

Table A.5 – Dimensions of gauges for ball couplings

Designated size of ball couplings	Gauge contour	Dimensions according to figures A.5, A.6						
		M_1	M_2	M_3	M_4	M_5	M_6	R
16N	Nom.	110	111	98	49	24	–	–
18N	Nom.	110	113	98	49	24	–	–
22N	Nom.	140	70	127	64	32	15	90

NOTE The thickness of each gauge is 12,7 mm.

A.7 NOT GO and GO Gauges for socket couplings



IEC

Figure A.7 – Dimensions of NOT GO and GO gauges for socket couplings

Table A.6 – Dimensions of NOT GO and GO gauges for socket couplings

Designated size of socket couplings	Gauge contour	Dimensions according to figure A.7																										
		D_1	D_2	D_3	H_1	H_2	H_3	R_1	R_2	R_3	R_4	α_1	D_4	D_5	H_4	H_5	H_6	H_7	H_8	M_1	M_2	M_3	R_5	R_6	R_7	α_2	α_3	α_4
16N	Min.	19,177	33,401	–	14,249	30,556	–	9,525	23,393	3,277	–	35,662	20,803	15,824	–	–	–	–	–	26,797	33,350	16,993	9,500	24,511	3,835	–	–	–
	Nom.	19,177	33,401	34,138	14,249	30,607	9,144	9,525	23,393	3,277	3,175	11	35,712	20,828	15,875	12,700	9,906	8,763	19,447	26,848	33,401	17,018	9,627	24,638	3,937	11	30	45
	Max.	19,202	33,452	–	14,300	30,607	–	9,652	23,520	3,378	–	–	35,712	20,828	15,875	–	–	–	–	–	26,848	33,401	17,018	9,627	24,638	3,937	–	–
18N	Min.	19,177	33,401	–	14,249	30,556	–	9,525	23,393	3,277	–	35,662	20,803	15,824	–	–	–	–	–	26,797	33,350	16,993	9,500	24,511	3,835	–	–	–
	Nom.	19,177	33,401	34,138	14,249	30,607	9,144	9,525	23,393	3,277	3,175	11	35,712	20,828	15,875	12,700	9,906	8,763	19,447	26,848	33,401	17,018	9,627	24,638	3,937	11	30	45
	Max.	19,202	33,452	–	14,300	30,607	–	9,652	23,520	3,378	–	–	35,712	20,828	15,875	–	–	–	–	–	26,848	33,401	17,018	9,627	24,638	3,937	–	–
22N	Min.	24,613	43,155	50,673	18,593	36,449	–	6,299	32,156	5,105	–	46,660	26,899	–	17,729	–	–	–	–	34,671	43,155	22,225	6,350	34,036	5,867	–	–	–
	Nom.	24,638	43,180	50,800	18,618	36,474	13,589	6,350	32,207	5,131	4,064	9,5	46,685	26,924	20,726	17,780	–	13,360	28,575	34,696	43,180	22,352	6,401	34,087	5,918	9,5	–	–
	Max.	24,663	43,205	50,927	18,644	36,500	–	6,401	32,258	5,156	–	46,711	26,949	–	17,831	–	–	–	–	34,722	43,205	22,479	6,452	34,138	5,969	–	–	–

Annex B (normative)

Clevis and tongue couplings, N series

B.1 General

This annex applies to the couplings of composite string insulator units.

This annex defines the dimensions of a series of clevis and tongue couplings, which permit articulation perpendicular to the coupling pin axis to avoid bending forces in the insulator, and permits the assembly of composite insulator units and fittings supplied by different manufacturers.

B.2 Dimensions

All dimensions indicated in Table B.1 are given in millimetres, and refer to the finished articles after surface treatment such as, for instance, hot dip galvanizing.

The outside dimensions of the clevis have not been fixed, since they depend on the mechanical characteristics of the material used. Therefore the length of the coupling pin is not fixed and, unless otherwise agreed, the coupling pin shall be delivered together with the clevis. A locking device, such as a nut or a split pin, shall be placed to hold the pin in its place. Only the dimensions necessary for assembly of the couplings are dealt with in this standard.

In general, the clevis is made of malleable or ductile cast iron or forged steel and the tongue of forged steel. However, other materials may be used if they have mechanical characteristics corresponding to those given in Table 1.

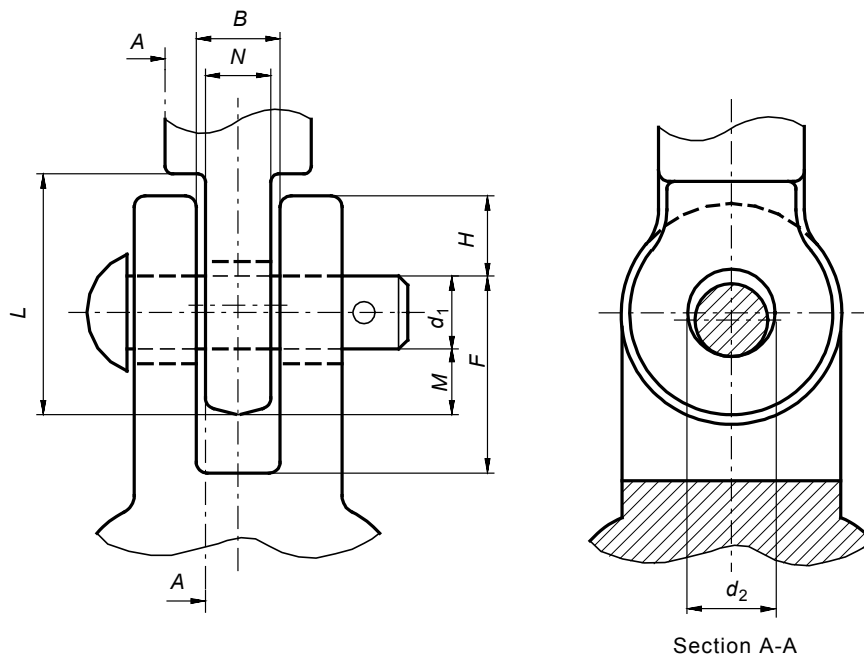
NOTE The dimensions of this series of couplings are based on those of the IEC 60471 C series, except that they allow articulation perpendicular to the coupling pin.

B.3 Plan of the annex

This annex includes three standard sizes of clevis and tongue couplings which reflect the North American practice.

B.4 Designation

The clevis and tongue couplings are designated by the diameter, expressed in millimetres, of the coupling pin which connects the clevis and the tongue, followed by the letter N.



IEC

Figure B.1 – Dimensions of clevis and tongue couplings

Table B.1 – Dimensions of clevis and tongue couplings

Designation		16N			19N			22N		
		Min.	Nom.	Max.	Min.	Nom.	Max.	Min.	Nom.	Max.
Coupling pin diameter	d_1	15,5	16	16,3	18,6	19	19,4	21,8	22	22,6
Hole of clevis and tongue	d_2	16,7	17,5	18,3	19,8	20,6	21,4	23	23,8	24,5
Tongue thickness	N	–	–	14,3	–	–	20,6	–	–	23,8
Clevis opening	B	17,5	–	–	22,2	–	–	25,4	–	–
Tongue	M	–	–	14,3	–	–	14,3	–	–	15,9
Clevis	F	32,9	–	–	36,2	–	–	40,9	–	–
Clevis	H	–	–	16,5	–	–	21	–	–	23
Tongue	L	48	–	–	56	–	–	63	–	–

Annex C (normative)

Y-clevis couplings

C.1 General

This annex applies to the couplings of composite string insulator units.

This annex defines the dimensions of a series of Y-clevis couplings, which permit articulation perpendicular and longitudinal to the coupling pin axis, to avoid bending forces in the insulator, and permits the assembly of composite insulator units and fittings supplied by different manufacturers.

C.2 Dimensions

All dimensions indicated in Table C.1 are given in millimetres, and refer to the finished articles after surface treatment such as, for instance, hot dip galvanizing.

The outside dimensions of the clevis have not been fixed, since they depend on the mechanical characteristics of the material used. Therefore, the length of the coupling pin is not fixed and, unless otherwise agreed, the coupling pin shall be delivered together with the clevis. A locking device, such as a nut or a split pin, shall be placed to hold the pin in its place. Only the dimensions necessary for assembly of the couplings are dealt with in this part of IEC 61466.

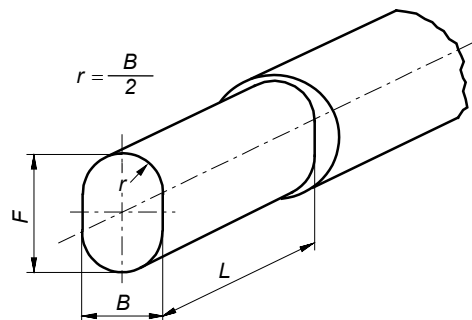
In general, the clevis is made of malleable or ductile cast iron or forged steel. However, other materials may be used if they have mechanical characteristics corresponding to those given in Table 1.

C.3 Plan of the annex

This annex includes three standard sizes of Y-clevis couplings which reflect the North American practice.

C.4 Designation

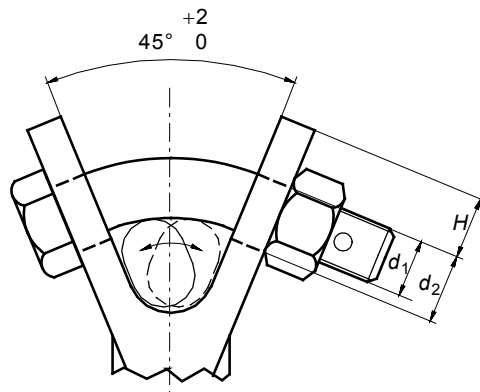
The Y-clevis couplings are designated by diameter, expressed in millimetres, of the coupling pin which connects the clevis to the equipment to which it shall be fitted, as shown in Figure C.1.



IEC

Figure C.1 – Dimensions of Y-clevis gauges

The gauge shall pass as indicated in Figure C.2.



IEC

Figure C.2 – Dimensions of Y-clevis couplings and gauges

Table C.1 – Dimensions of Y-clevis couplings

Designation		16			19			22		
		Min.	Nom.	Max.	Min.	Nom.	Max.	Min.	Nom.	Max.
Coupling pin diameter	d_1	15,5	16	16,3	18,6	19	19,4	21,8	22	22,6
Hole of clevis ^a	d_2	18,5	19	19,3	22,5	23	23,5	26,5	27	27,5
Clevis	H	–	–	16,5	–	–	21	–	–	23
Gauge width	B	15,9	16	16,1	20,9	21	21,1	23,9	24	24,1
Gauge height	F	29,8	30	30,2	31,8	32	32,2	39,8	40	40,2
Gauge length	L	45	–	–	45	–	–	55	–	–

^a In order to allow satisfactory insertion of the coupling pin through the holes in the clevis arms these holes may be elongated rather than round. In this case the dimension d_2 shall be taken as the width of the holes.

Annex D (normative)

Eye couplings

D.1 General

This annex applies to the couplings of composite string insulator units.

This annex defines the dimensions of a series of eye couplings, which permit articulation perpendicular and longitudinal to the coupling, to avoid bending forces in the insulator, and to permit the assembly of composite insulator units and fittings supplied by different manufacturers.

D.2 Dimensions

All dimensions indicated in Table D.1 are given in millimetres, and refer to the finished articles after surface treatment such as, for instance, hot dip galvanizing.

The dimensions of the eye have only been fixed for such dimensions that are important for the connecting parts since all other dimensions depend on the mechanical characteristics of the material used.

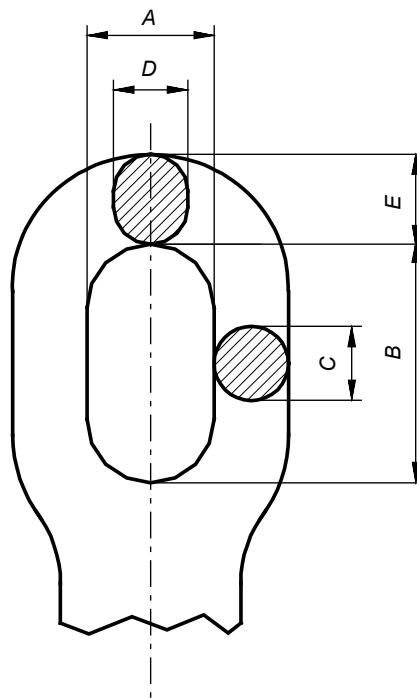
In general, the eye is made of forged steel. However, other materials may be used if they have mechanical characteristics corresponding to those given in Table 1 of this standard.

D.3 Plan of the annex

This annex includes three standard sizes of eye couplings which reflect the North American practice.

D.4 Designation

The eye couplings are designated by the inside width, expressed in millimetres, of the coupling eye, as shown in Figure D.1.



IEC

Figure D.1 – Dimensions of eye couplings

Table D.1 – Dimensions of eye couplings

Designation		17		24		25	
Dimensions mm		Min.	Max.	Min.	Max.	Min.	Max.
Width of eye	A	17	–	24	–	25	–
Length of eye	B	30	–	48	–	50	–
Shank	C	–	15	–	19	–	24
Shoulder	D	–	15	–	19	–	24
Head	E	–	18	–	19	–	26

Bibliography

- [1] IEC 61109:2008, *Insulators for overhead lines – Composite suspension and tension insulators for a.c. systems with a nominal voltage greater than 1 000 V – Definitions, test methods and acceptance criteria*
-

British Standards Institution (BSI)

BSI is the national body responsible for preparing British Standards and other standards-related publications, information and services.

BSI is incorporated by Royal Charter. British Standards and other standardization products are published by BSI Standards Limited.

About us

We bring together business, industry, government, consumers, innovators and others to shape their combined experience and expertise into standards-based solutions.

The knowledge embodied in our standards has been carefully assembled in a dependable format and refined through our open consultation process. Organizations of all sizes and across all sectors choose standards to help them achieve their goals.

Information on standards

We can provide you with the knowledge that your organization needs to succeed. Find out more about British Standards by visiting our website at bsigroup.com/standards or contacting our Customer Services team or Knowledge Centre.

Buying standards

You can buy and download PDF versions of BSI publications, including British and adopted European and international standards, through our website at bsigroup.com/shop, where hard copies can also be purchased.

If you need international and foreign standards from other Standards Development Organizations, hard copies can be ordered from our Customer Services team.

Copyright in BSI publications

All the content in BSI publications, including British Standards, is the property of and copyrighted by BSI or some person or entity that owns copyright in the information used (such as the international standardization bodies) and has formally licensed such information to BSI for commercial publication and use.

Save for the provisions below, you may not transfer, share or disseminate any portion of the standard to any other person. You may not adapt, distribute, commercially exploit, or publicly display the standard or any portion thereof in any manner whatsoever without BSI's prior written consent.

Storing and using standards

Standards purchased in soft copy format:

- A British Standard purchased in soft copy format is licensed to a sole named user for personal or internal company use only.
- The standard may be stored on more than 1 device provided that it is accessible by the sole named user only and that only 1 copy is accessed at any one time.
- A single paper copy may be printed for personal or internal company use only.

Standards purchased in hard copy format:

- A British Standard purchased in hard copy format is for personal or internal company use only.
- It may not be further reproduced – in any format – to create an additional copy. This includes scanning of the document.

If you need more than 1 copy of the document, or if you wish to share the document on an internal network, you can save money by choosing a subscription product (see 'Subscriptions').

Reproducing extracts

For permission to reproduce content from BSI publications contact the BSI Copyright & Licensing team.

Subscriptions

Our range of subscription services are designed to make using standards easier for you. For further information on our subscription products go to bsigroup.com/subscriptions.

With **British Standards Online (BSOL)** you'll have instant access to over 55,000 British and adopted European and international standards from your desktop. It's available 24/7 and is refreshed daily so you'll always be up to date.

You can keep in touch with standards developments and receive substantial discounts on the purchase price of standards, both in single copy and subscription format, by becoming a **BSI Subscribing Member**.

PLUS is an updating service exclusive to BSI Subscribing Members. You will automatically receive the latest hard copy of your standards when they're revised or replaced.

To find out more about becoming a BSI Subscribing Member and the benefits of membership, please visit bsigroup.com/shop.

With a **Multi-User Network Licence (MUNL)** you are able to host standards publications on your intranet. Licences can cover as few or as many users as you wish. With updates supplied as soon as they're available, you can be sure your documentation is current. For further information, email subscriptions@bsigroup.com.

Revisions

Our British Standards and other publications are updated by amendment or revision.

We continually improve the quality of our products and services to benefit your business. If you find an inaccuracy or ambiguity within a British Standard or other BSI publication please inform the Knowledge Centre.

Useful Contacts

Customer Services

Tel: +44 345 086 9001

Email (orders): orders@bsigroup.com

Email (enquiries): cservices@bsigroup.com

Subscriptions

Tel: +44 345 086 9001

Email: subscriptions@bsigroup.com

Knowledge Centre

Tel: +44 20 8996 7004

Email: knowledgecentre@bsigroup.com

Copyright & Licensing

Tel: +44 20 8996 7070

Email: copyright@bsigroup.com

BSI Group Headquarters

389 Chiswick High Road London W4 4AL UK