

BS EN 61439-2:2011



BSI Standards Publication

Low-voltage switchgear and controlgear assemblies

Part 2: Power switchgear and controlgear assemblies

bsi.

...making excellence a habit.™

National foreword

This British Standard is the UK implementation of EN 61439-2:2011. It is identical to IEC 61439-2:2011. It supersedes BS EN 61439-2:2009, which will be withdrawn on 23 September 2014.

The UK participation in its preparation was entrusted by Technical Committee PEL/17, Switchgear, controlgear, and HV-LV co-ordination, to Subcommittee PEL/17/3, Low voltage switchgear and controlgear assemblies.

A list of organizations represented on this subcommittee can be obtained on request to its secretary.

Guidance for users of BS EN 61439-2:2011 for the internal separation of Assemblies, for use in the UK, is included in National Annex NA (informative).

This publication does not purport to include all the necessary provisions of a contract. Users are responsible for its correct application.

© BSI 2011

ISBN 978 0 580 67926 1

ICS 29.130.20

Compliance with a British Standard cannot confer immunity from legal obligations.

This British Standard was published under the authority of the Standards Policy and Strategy Committee on 31 December 2011.

Amendments/corrigenda issued since publication

Date	Text affected
------	---------------

English version

**Low-voltage switchgear and controlgear assemblies -
Part 2: Power switchgear and controlgear assemblies
(IEC 61439-2:2011)**

Ensembles d'appareillage
à basse tension -
Partie 2: Ensembles d'appareillage de
puissance
(CEI 61439-2:2011)

Niederspannungs-
Schaltgerätekombinationen -
Teil 2: Energie-
Schaltgerätekombinationen
(IEC 61439-2:2011)

This European Standard was approved by CENELEC on 2011-09-23. CENELEC members are bound to comply with the CEN/CENELEC Internal Regulations which stipulate the conditions for giving this European Standard the status of a national standard without any alteration.

Up-to-date lists and bibliographical references concerning such national standards may be obtained on application to the CEN-CENELEC Management Centre or to any CENELEC member.

This European Standard exists in three official versions (English, French, German). A version in any other language made by translation under the responsibility of a CENELEC member into its own language and notified to the CEN-CENELEC Management Centre has the same status as the official versions.

CENELEC members are the national electrotechnical committees of Austria, Belgium, Bulgaria, Croatia, Cyprus, the Czech Republic, Denmark, Estonia, Finland, France, Germany, Greece, Hungary, Iceland, Ireland, Italy, Latvia, Lithuania, Luxembourg, Malta, the Netherlands, Norway, Poland, Portugal, Romania, Slovakia, Slovenia, Spain, Sweden, Switzerland and the United Kingdom.

CENELEC

European Committee for Electrotechnical Standardization
Comité Européen de Normalisation Electrotechnique
Europäisches Komitee für Elektrotechnische Normung

Management Centre: Avenue Marnix 17, B - 1000 Brussels

Foreword

The text of document 17D/440/FDIS, future edition 2 of IEC 61439-2, prepared by SC 17D, "Low-voltage switchgear and controlgear assemblies", of IEC/TC 17, "Switchgear and controlgear" was submitted to the IEC-CENELEC parallel vote and approved by CENELEC as EN 61439-2:2011.

The following dates are fixed:

- latest date by which the document has to be implemented at national level by publication of an identical national standard or by endorsement (dop) 2012-06-23
- latest date by which the national standards conflicting with the document have to be withdrawn (dow) 2014-09-23

This document supersedes EN 61439-2:2009.

EN 61439-2:2011 includes the following significant technical changes with respect to EN 61439-2:2009:

- clarification of the scope;
- revision of requirements for withdrawable and removable parts;
- revision of mechanical impact test (10.2.6);
- extension of Table 101;
- review of Table BB.1 to reflect modified requirements and verifications;
- general editorial review.

This standard is to be read in conjunction with EN 61439-1. The provisions of the general rules dealt with in EN 61439-1 (hereinafter referred to as Part 1) are only applicable to this standard insofar as they are specifically cited. When this standard states "addition", "modification" or "replacement", the relevant text in Part 1 is to be adapted accordingly.

Subclauses that are numbered with a 101 (102, 103, etc.) suffix are additional to the same subclause in Part 1.

Tables and figures in this Part 2 that are new are numbered starting with 101.

New annexes in this Part 2 are lettered AA, BB, etc.

In this standard, terms written in small capitals are defined in Clause 3.

NOTE Throughout the EN 61439 series of standards, the term ASSEMBLY (see 3.1.1 of Part 1) is used for a low-voltage switchgear and controlgear assembly.

Attention is drawn to the possibility that some of the elements of this document may be the subject of patent rights. CENELEC [and/or CEN] shall not be held responsible for identifying any or all such patent rights.

This document has been prepared under a mandate given to CENELEC by the European Commission and the European Free Trade Association, and supports essential requirements of EU Directive(s).

For the relationship with EU Directive see informative Annex ZZ, which is an integral part of this document.

Endorsement notice

The text of the International Standard IEC 61439-2:2011 was approved by CENELEC as a European Standard without any modification.

Annex ZA
(normative)

**Normative references to international publications
with their corresponding European publications**

The following referenced documents are indispensable for the application of this document. For dated references, only the edition cited applies. For undated references, the latest edition of the referenced document (including any amendments) applies.

NOTE When an international publication has been modified by common modifications, indicated by (mod), the relevant EN/HD applies.

Addition to Annex ZA of EN 61439-1:

<u>Publication</u>	<u>Year</u>	<u>Title</u>	<u>EN/HD</u>	<u>Year</u>
IEC 60947-3	2008	Low-voltage switchgear and controlgear - Part 3: Switches, disconnectors, switch-disconnectors and fuse-combination units	EN 60947-3	2009
IEC 61140	-	Protection against electric shock - Common aspects for installation and equipment	EN 61140	-
IEC 61439-1	2011	Low-voltage switchgear and controlgear assemblies - Part 1: General rules	EN 61439-1	2011

Annex ZZ
(informative)

Coverage of Essential Requirements of EC Directive 2004/108/EC

This European Standard has been prepared under a mandate given to CENELEC by the European Commission and the European Free Trade Association and within its scope the standard covers all relevant essential requirements as given in Article 1 of Annex I of the EC Directive 2004/108/EC.

Compliance with this standard provides one means of conformity with the specified essential requirements of the Directives concerned.

WARNING: Other requirements and other EC Directives may be applicable to the products falling within the scope of this standard.

CONTENTS

1	Scope.....	5
2	Normative references	5
3	Terms and definitions	6
4	Symbols and abbreviations.....	7
5	Interface characteristics	7
6	Information	8
7	Service conditions	8
8	Constructional requirements.....	8
9	Performance requirements	11
10	Design verification.....	11
11	Routine verification.....	12
	Annex AA (informative) Forms of internal separation (see 8.101).....	16
	Annex BB (informative) Items subject to agreement between the ASSEMBLY manufacturer and the user	19
	Bibliography.....	23
	National Annex NA (informative) Guide to the internal separation of ASSEMBLIES.....	24
	Figure AA.1 – Symbols used in Figures AA.2 and AA.3.....	16
	Figure AA.2 – Forms 1 and 2	17
	Figure AA.3 – Forms 3 and 4	18
	Table 101 – Values of assumed loading.....	12
	Table 102 – Test voltages across the open contacts of equipment suitable for isolation.....	12
	Table 103 – Electrical conditions for the different positions of withdrawable parts	13
	Table 104 – Forms of internal separation	14
	Table BB.1 – Items subject to agreement between the ASSEMBLY manufacturer and the user	19

LOW-VOLTAGE SWITCHGEAR AND CONTROLGEAR ASSEMBLIES –

Part 2: Power switchgear and controlgear assemblies

1 Scope

NOTE 1 Throughout this part, the abbreviation PSC-ASSEMBLY (see 3.1.101) is used for a power switchgear and controlgear ASSEMBLY.

This part of IEC 61439 defines the specific requirements of power switchgear and controlgear assemblies (PSC-ASSEMBLIES) as follows:

- ASSEMBLIES for which the rated voltage does not exceed 1 000 V in case of a.c. or 1 500 V in case of d.c.;
- stationary or movable ASSEMBLIES with or without enclosure;
- ASSEMBLIES intended for use in connection with the generation, transmission, distribution and conversion of electric energy, and for the control of electric energy consuming equipment;
- ASSEMBLIES designed for use under special service conditions, for example in ships and in rail vehicles provided that the other relevant specific requirements are complied with;

NOTE 2 Supplementary requirements for ASSEMBLIES in ships are covered by IEC 60092-302.

- ASSEMBLIES designed for electrical equipment of machines. Supplementary requirements for ASSEMBLIES forming part of a machine are covered by the IEC 60204 series.

This standard applies to all ASSEMBLIES whether they are designed, manufactured and verified on a one-off basis or fully standardised and manufactured in quantity.

The manufacture and/or assembly may be carried out other than by the original manufacturer (see 3.10.1).

This standard does not apply to individual devices and self-contained components, such as motor starters, fuse switches, electronic equipment, etc. which will comply with the relevant product standards. This standard does not apply to the specific types of ASSEMBLIES covered by other parts of IEC 61439. For ASSEMBLIES not covered by other parts this part applies.

2 Normative references

This clause of Part 1 is applicable except as follows.

Addition:

IEC 60947-3:2008, *Low-voltage switchgear and controlgear – Part 3: Switches, disconnectors, switch-disconnectors and fuse-combination units*

IEC 61140, *Protection against electric shock – Common aspects for installation and equipment*

IEC 61439-1:2011, *Low-voltage switchgear and controlgear assemblies – Part 1: General rules*¹

3 Terms and definitions

This clause of Part 1 is applicable except as follows.

3.1 General terms

Additional definitions:

3.1.101

power switchgear and controlgear assembly **PSC-ASSEMBLY**

low-voltage switchgear and controlgear assembly used to distribute and control energy for all types of loads, intended for industrial, commercial and similar applications where operation by ordinary persons is not intended

NOTE It is not excluded for a PSC-ASSEMBLY to be located in an area accessible to ordinary persons.

3.1.102

test situation

condition of a PSC-ASSEMBLY or part of it in which the relevant main circuits are open on its supply side but not necessarily isolated whilst the associated auxiliary circuits are connected, allowing operation tests of the incorporated devices

3.1.103

form of internal separation

classification of physical separation within a PSC-ASSEMBLY

3.2 Constructional units of ASSEMBLIES

Replacement of the title:

3.2 Constructional units of PSC-ASSEMBLIES

Additional definitions:

3.2.101

withdrawable part

removable part intended to be moved from the connected position to the isolated position and to a test position, if any, whilst remaining mechanically attached to the PSC-ASSEMBLY

3.2.102

test position

position of a withdrawable part in which the relevant main circuits are open on its supply side but not necessarily isolated and in which the auxiliary circuits are connected allowing operation tests of the incorporated devices, the withdrawable part remaining mechanically attached to the PSC-ASSEMBLY

NOTE The opening may also be achieved without any mechanical movement of the withdrawable part by operation of a suitable device.

¹ To be published.

3.2.103

isolated position

position of a withdrawable part in which an isolating distance is established in main and auxiliary circuits on its supply side, the withdrawable part remaining mechanically attached to the PSC-ASSEMBLY

NOTE The isolating distance may also be established without any mechanical movement of the withdrawable part by operation of a suitable device.

3.2.104

isolating distance (of a withdrawable part)

clearance between open contacts meeting the safety requirements specified for disconnectors

[IEC 60050-441:1984, 441-17-35, modified]

Addition:

3.101 Electrical connections of functional units

3.101.1

disconnectable connection

connection which is connected or disconnected by manual operation of the connecting means without a tool

3.101.2

withdrawable connection

connection which is connected or disconnected by bringing the functional unit into the connected or isolated position

3.102 Gangways within PSC-ASSEMBLIES

3.102.1

operating gangway within a PSC-ASSEMBLIES

space to be used by the operator for the proper operation and supervision of the PSC-ASSEMBLY

3.102.2

maintenance gangway within a PSC-ASSEMBLIES

space which is accessible to authorized personnel only and primarily intended for use when servicing the installed equipment

4 Symbols and abbreviations

This clause of Part 1 is applicable.

5 Interface characteristics

This clause of Part 1 is applicable except as follows.

5.4 Rated diversity factor (RDF)

Addition:

In the absence of an agreement between the ASSEMBLY manufacturer and user concerning the actual load currents, the assumed loading of the outgoing circuits of the ASSEMBLY or group of outgoing circuits may be based on the values in Table 101.

5.6 Other characteristics

Replacement of item l):

- l) the type of construction – fixed, removable or withdrawable parts (see 8.5.1 and 8.5.2 of Part 1);

Addition:

- m) the form of internal separation (see 8.101);
- n) the types of electrical connections of functional units (see 8.5.101).

6 Information

This clause of Part 1 is applicable except as follows.

6.1 ASSEMBLY designation marking

Replacement of the title and item d):

6.1 PSC-ASSEMBLY designation marking

- d) IEC 61439-2;

7 Service conditions

This clause of Part 1 is applicable.

8 Constructional requirements

This clause of Part 1 is applicable except as follows.

8.2 Degree of protection provided by an ASSEMBLY enclosure

Replacement of the title:

8.2 Degree of protection provided by a PSC-ASSEMBLY enclosure

8.2.1 Protection against mechanical impact

Replacement of text:

Where a degree of protection provided by a PSC-ASSEMBLY enclosure against mechanical impact is declared by the original manufacturer this shall be verified in accordance with IEC 62262 (see 10.2.6).

Additional subclause:

8.2.101 PSC-ASSEMBLY with withdrawable parts

The degree of protection indicated for PSC-ASSEMBLIES normally applies to the connected position (see 3.2.3) of withdrawable parts. The ASSEMBLY manufacturer shall indicate the degree of protection obtained in the other positions and during the transfer between positions.

PSC-ASSEMBLIES with withdrawable parts may be so designed that the degree of protection applying to the connected position is also maintained in the test and isolated positions and during transfer from one position to another.

If, after the removal of a withdrawable part, it is not possible to maintain the original degree of protection e.g. by closing a door, an agreement shall be reached between the ASSEMBLY manufacturer and user as to what measures shall be taken to ensure adequate protection. Information provided by the ASSEMBLY manufacturer may take the place of such an agreement.

8.3.2 Clearances

Addition:

For withdrawable parts, the isolation provided in the isolated position shall at least comply with the requirements in the relevant specification for disconnectors (see IEC 60947-3). This applies with the equipment in new condition, taking account of the manufacturing tolerances and anticipated changes in dimensions due to wear.

The isolating distance between the withdrawable unit main contacts and their associated fixed contacts in the isolated position shall be capable of withstanding the test voltage for the declared impulse withstand voltage as specified in Table 102.

8.4.3.2.2 Requirements for earth continuity providing protection against the consequences of faults within the ASSEMBLY

Replacement of the title:

8.4.3.2.2 Requirements for earth continuity providing protection against the consequences of faults within the PSC-ASSEMBLY

Replacement of last paragraph:

When removable or withdrawable parts are equipped with a metal supporting surface, these surfaces shall be considered sufficient for ensuring earth continuity of protective circuits provided that the pressure exerted on them is sufficiently high. The continuity of the protective circuit of a withdrawable part shall remain effective from the connected position to the isolated position inclusively.

8.4.6.1 Devices to be operated or components to be replaced by ordinary persons

This subclause of Part 1 is not applicable.

8.4.6.2 Requirements related to accessibility in service by authorized persons

Additional subclause:

8.4.6.2.101 Operating and maintenance gangways within a PSC-ASSEMBLY

Operating and maintenance gangways (see 3.102.1 and 3.102.2) within an ASSEMBLY shall comply with the requirements for basic protection as specified in IEC 61140. The design and construction of such gangways shall be agreed upon between ASSEMBLY manufacturer and user.

Recesses within a PSC-ASSEMBLY of limited depth, in the order of 1 m, are not considered to be gangways.

8.5.2 Removable parts

Replacement of the title:

8.5.2 Removable and withdrawable parts

Replacement of text:

The removable and withdrawable parts shall be so constructed that their electrical equipment can be safely removed and/or isolated from or connected to the main circuit whilst this circuit is live. The removable and withdrawable parts may be provided with an insertion interlock (see 3.2.5 of Part 1).

Clearances and creepage distances (see 8.3 of Part 1 and 8.3.2 above) shall be complied with in the different positions as well as during transfer from one position to another.

Additional subclauses:

8.5.2.101 Withdrawable parts

Withdrawable parts shall have in addition an isolated position (see 3.2.103) and may have a test position (see 3.2.102), or a test situation (see 3.1.102). They shall be distinctly located in these positions. These positions shall be clearly discernible.

In PSC-ASSEMBLIES with withdrawable parts all live parts shall be protected in such a manner that they cannot unintentionally be touched when the door, if any, is open and the withdrawable part is withdrawn from the connected position or removed. Where an obstacle or shutter is used they shall meet the requirements of 8.4.6.2.5 of Part 1.

For the electrical conditions associated with the different positions of withdrawable parts, see Table 103.

8.5.2.102 Interlocking and padlocking of removable and withdrawable parts

Unless otherwise specified the removable and withdrawable parts shall be fitted with a device, which ensures that the apparatus can only be removed/withdrawn and/or re-inserted after its main circuit has been interrupted.

In order to prevent unauthorized operation the removable and withdrawable parts or their associated ASSEMBLY location may be provided with a lockable means to secure them in one or more of their positions.

Addition:

8.5.101 Description of the types of electrical connections of functional units

The types of electrical connections of functional units within PSC-ASSEMBLIES or parts of PSC-ASSEMBLIES can be denoted by a three-letter code:

- the first letter denotes the type of electrical connection of the main incoming circuit;
- the second letter denotes the type of electrical connection of the main outgoing circuit;
- the third letter denotes the type of electrical connection of the auxiliary circuits.

The following letters shall be used:

- F for fixed connections (see 3.2.6 of Part 1);
- D for disconnectable connections (see 3.101.1);
- W for withdrawable connections (see 3.101.2).

Addition:

8.101 Internal separation of PSC-ASSEMBLIES

Typical arrangements of internal separation by barriers or partitions are described in Table 104 and are classified as forms (for examples, see Annex AA).

The form of separation and higher degrees of protection shall be the subject of an agreement between ASSEMBLY manufacturer and user.

Internal separation may be used to attain one or more of the following conditions between functional units, separate compartments or enclosed protected spaces:

- protection against contact with hazardous parts. The degree of protection shall be at least IP XXB (see 8.4.2.3);
- protection against the passage of solid foreign bodies. The degree of protection shall be at least IP 2X.

NOTE 1 The degree of protection IP 2X covers the degree of protection IP XXB. Separation may be achieved by means of partitions or barriers (metallic or non-metallic), insulation of live parts or the integral housing of a device e.g. a moulded case circuit breaker.

See 8.4.2.3 of Part 1 with regard to stability and durability of barriers and partitions.

See 8.4.6.2 of Part 1 and above with regard to accessibility for maintenance on isolated functional units.

NOTE 2 The internal separation described is not intended to guarantee the integrity of the ASSEMBLY in the event of an arcing fault.

9 Performance requirements

This clause of Part 1 is applicable.

10 Design verification

This clause of Part 1 is applicable except as follows.

10.2.6 Mechanical impact

Replacement:

When a mechanical impact test is performed, it shall be carried out according to 9.6 of IEC 62208:2002.

10.3 Degree of protection of ASSEMBLIES

Addition:

The degree of protection associated with withdrawable parts as specified in accordance with 8.2.101 and associated with internal separation in accordance with 8.101 shall be verified in accordance with IEC 60529.

10.9.3.2 Impulse withstand voltage test

Addition:

The impulse withstand voltage capability of the isolating distance between the withdrawable units' main contacts and their associated fixed contacts shall be verified to confirm compliance with 8.3.2.

10.13 Mechanical operation

Addition:

In the case of withdrawable parts, the operating cycle includes any physical movements from the connected to the isolated position and back to the connected position.

11 Routine verification

This clause of Part 1 is applicable except as follows.

11.8 Mechanical operation

Replacement:

Verification shall include the checking of interlocking and locking arrangements associated with removable and withdrawable parts.

Table 101 – Values of assumed loading

Type of load	Assumed loading factor
Distribution – 2 and 3 circuits	0,9
Distribution – 4 and 5 circuits	0,8
Distribution – 6 to 9 circuits	0,7
Distribution – 10 or more circuits	0,6
Electric actuator	0,2
Motors ≤ 100 kW	0,8
Motors > 100 kW	1,0

Table 102 – Test voltages across the open contacts of equipment suitable for isolation

Rated impulse withstand voltage U_{imp} kV	Test voltages and corresponding altitudes during test									
	$U_{1,2/50}$, a.c. peak and d.c. kV					a.c. r.m.s. kV				
	Sea level	200 m	500 m	1 000 m	2 000 m	Sea level	200 m	500 m	1 000 m	2 000 m
0,33	1,8	1,7	1,7	1,6	1,5	1,3	1,2	1,2	1,1	1,06
0,5	1,8	1,7	1,7	1,6	1,5	1,3	1,2	1,2	1,1	1,06
0,8	1,8	1,7	1,7	1,6	1,5	1,3	1,2	1,2	1,1	1,06
1,5	2,3	2,3	2,2	2,2	2,0	1,6	1,6	1,55	1,55	1,42
2,5	3,5	3,5	3,4	3,2	3,0	2,47	2,47	2,40	2,26	2,12
4	6,2	6,0	5,8	5,6	5,0	4,38	4,24	4,10	3,96	3,54
6	9,8	9,6	9,3	9,0	8,0	7,00	6,80	6,60	6,40	5,66
8	12,3	12,1	11,7	11,1	10,0	8,70	8,55	8,27	7,85	7,07
12	18,5	18,1	17,5	16,7	15,0	13,10	12,80	12,37	11,80	10,60

Table 103 – Electrical conditions for the different positions of withdrawable parts

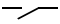


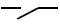





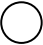



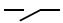
Circuit	Method of connection	Position			
		Connected position (see 3.2.3 of Part 1)	Test situation/position (see 3.1.102/3.2.102)	Isolated position (see 3.2.103)	Removed position (see 3.2.4 of Part 1)
Incoming main circuit	Incoming line plug and socket or other connection facilities				
Outgoing main circuit	Outgoing line plug and socket or other connection facilities		 or 	 or  ^a	
Auxiliary circuit	Plug and socket or similar connection facilities				
Condition of circuits within withdrawable parts		Live	Live Auxiliary circuits ready for operational testing	Dead if no backfeed is present	
Condition of outgoing PSC-ASSEMBLY terminals of main circuits		Live	Live or not disconnected ^b	Dead if no backfeed is present	Dead if no backfeed is present
The requirements of 8.4.5 of Part 1 shall be complied with.					
Earth continuity shall be in accordance with 8.4.3.2.2 and maintained until the isolating distance is established.					
^a Depending on design.					
^b Depending on the terminals being fed from alternative sources of supply such as a standby supply.					
 = connected  = isolated  = open, but not necessarily isolated					

Table 104 – Forms of internal separation

Main criteria	Subcriteria	Form
No internal separation.		Form 1
Separation of busbars from all functional units.	Terminals for external conductors not separated from busbars	Form 2a
	Terminals for external conductors separated from busbars	Form 2b
<ul style="list-style-type: none"> - Separation of busbars from all functional units. - Separation of all functional units from one another. - Separation of terminals for external conductors and the external conductors from the functional units, but not from the terminals of other functional units. 	Terminals for external conductors not separated from busbars	Form 3a
	Terminals for external conductors and external conductors separated from busbars	Form 3b
<ul style="list-style-type: none"> - Separation of busbars from all functional units - Separation of all functional units from one another. - Separation of terminals for external conductors associated with a functional unit from the terminals of any other functional unit and the busbars. - Separation of the external conductors from the busbars. - Separation of the external conductors associated with a functional unit from other functional units and their terminals. - External conductors need not be separated from each other. 	Terminals for external conductors in the same compartment as the associated functional unit	Form 4a
	Terminals for external conductors not in the same compartment as the associated functional unit, but in individual, separate, enclosed protected spaces or compartments	Form 4b

Annexes

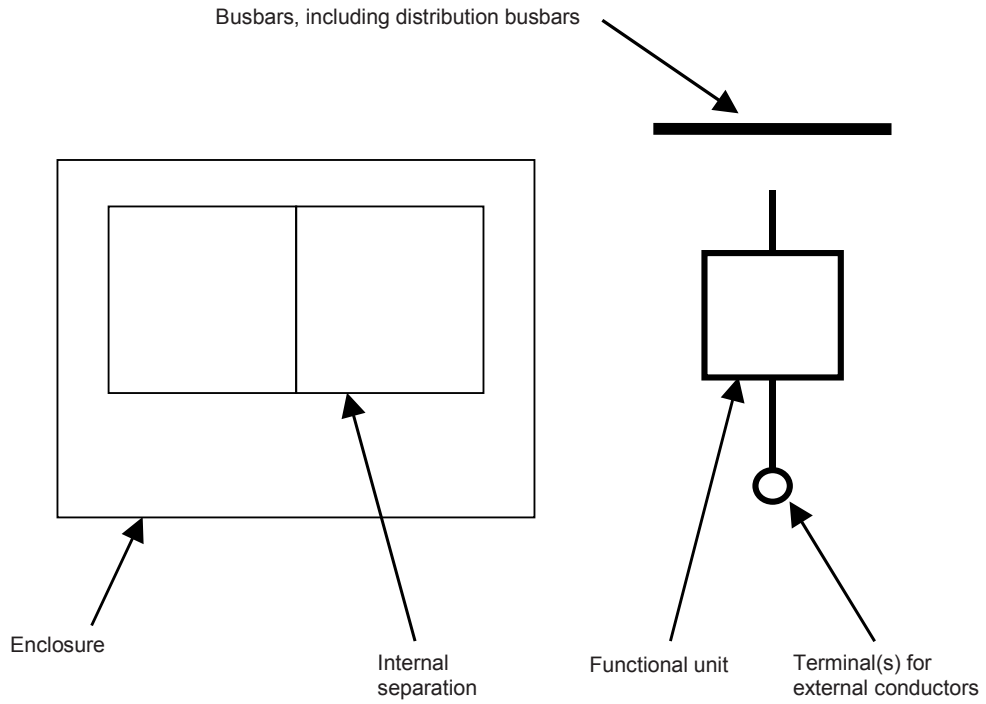
Annexes of Part 1 are applicable except as follows.

Annex C of Part 1 is not applicable.

Additional annexes:

Annex AA
(informative)

Forms of internal separation (see 8.101)

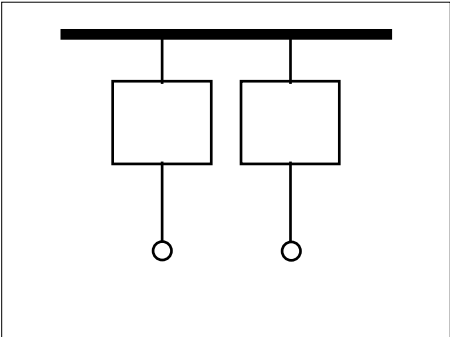


IEC 1711/11

Figure AA.1 – Symbols used in Figures AA.2 and AA.3

Form 1

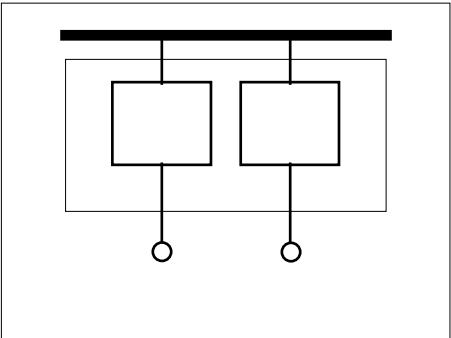
No internal separation



IEC 1712/11

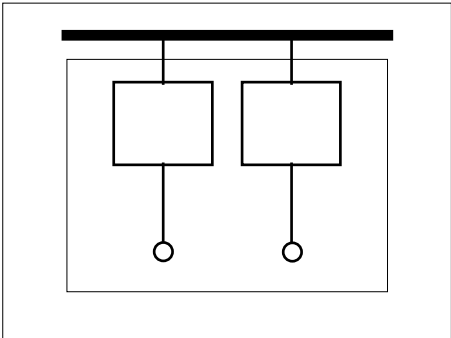
Form 2

Separation of busbars from all functional units



Form 2a:
Terminals not separated from busbars

IEC 1713/11



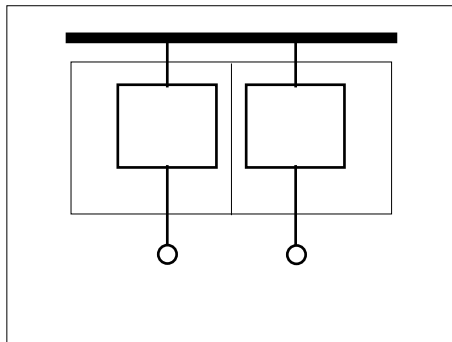
Form 2b:
Terminals separated from busbars

IEC 1714/11

Figure AA.2 – Forms 1 and 2

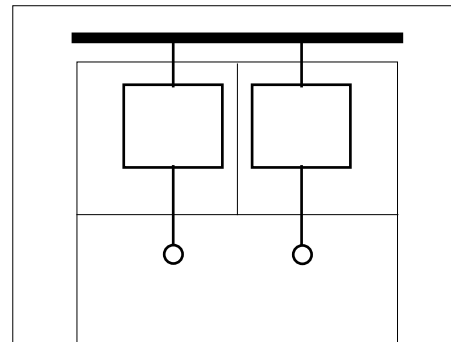
Form 3

Separation of busbars from all functional units
+
Separation of all functional units from one another
+
Separation of terminals for external conductors and external conductors from the functional units, but not from the terminals of other functional units



Form 3a:
Terminals not separated from busbars

IEC 1715/11

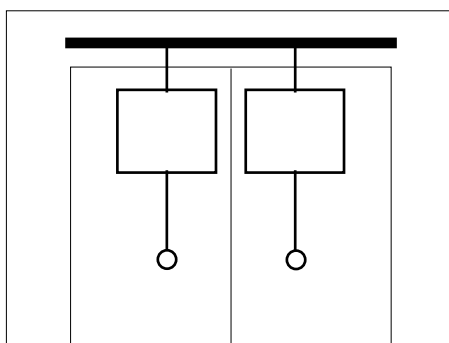


Form 3b:
Terminals and external conductors separated from busbars

IEC 1716/11

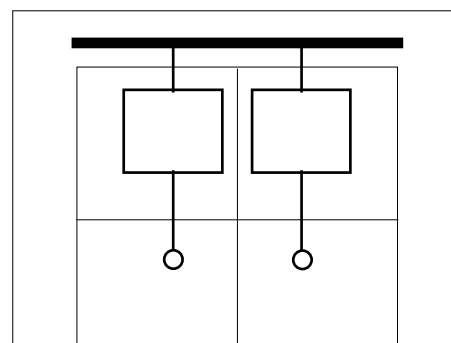
Form 4

Separation of busbars from all functional units
+
Separation of all functional units from one another
+
Separation of terminals for external conductors associated with a functional unit from the terminals of any other functional unit and the busbars
+
Separation of the external conductors from the busbars
+
Separation of the external conductors associated with a functional unit from other functional units and their terminals
+
External conductors need not be separated from each other



Form 4a:
Terminals in same compartment
as associated functional unit

IEC 1717/11



Form 4b:
Terminals not in same compartment
as associated functional unit

IEC 1718/11

Figure AA.3 – Forms 3 and 4

Annex BB
(informative)

**Items subject to agreement between
the ASSEMBLY manufacturer and the user**

The following information is subject to an agreement between the ASSEMBLY manufacturer and the user. In some cases, information declared by the ASSEMBLY manufacturer may take the place of an agreement.

**Table BB.1 – Items subject to agreement between
the ASSEMBLY manufacturer and the user**

Characteristics	Reference clause or subclause	Default arrangement ^b	Options listed in standard	User requirement ^a
Electrical system				
Earthing system	5.6, 8.4.3.1, 8.4.3.2.3, 8.6.2, 10.5, 11.4	Manufacturer's standard, selected to suit local requirements	TT / TN-C / TN-C-S / IT, TN-S	
Nominal voltage (V)	3.8.9.1, 5.2.1, 8.5.3	Local, according to installation conditions	max 1 000 V a.c. or 1 500 V d.c.	
Transient overvoltages	5.2.4, 8.5.3, 9.1, Annex G	Determined by the electrical system	Overvoltage category I / II / III / IV	
Temporary overvoltages	9.1	Nominal system voltage + 1 200 V	None	
Rated frequency f_n (Hz)	3.8.12, 5.5, 8.5.3, 10.10.2.3, 10.11.5.4	According to local installation conditions	d.c./50 Hz/60 Hz	
Additional on site testing requirements: wiring, operational performance and function	11.10	Manufacturer's standard, according to application	None	
Short-circuit withstand capability				
Prospective short-circuit current at supply terminals I_{cp} (kA)	3.8.7	Determined by the electrical system	None	
Prospective short-circuit current in the neutral	10.11.5.3.5	Max. 60 % of phase values	None	
Prospective short-circuit current in the protective circuit	10.11.5.6	Max. 60 % of phase values	None	
SCPD in the incoming functional unit requirement	9.3.2	According to local installation conditions	Yes / No	
Co-ordination of short-circuit protective devices including external short-circuit protective device details	9.3.4	According to local installation conditions	None	
Data associated with loads likely to contribute to the short-circuit current	9.3.2	No loads likely to make a significant contribution allowed for	None	

Characteristics	Reference clause or subclause	Default arrangement ^b	Options listed in standard	User requirement ^a
Protection of persons against electric shock in accordance with IEC 60364-4-41				
Type of protection against electric shock – Basic protection (protection against direct contact)	8.4.2	Basic protection	According to local installation regulations	
Type of protection against electric shock – Fault protection (protection against indirect contact)	8.4.3	According to local installation conditions	Automatic disconnection of supply / Electrical separation / Total insulation	
Installation environment				
Location type	3.5, 8.1.4, 8.2	Manufacturer's standard, according to application	Indoor / outdoor	
Protection against ingress of solid foreign bodies and ingress of water	8.2.2, 8.2.3	Indoor (enclosed): IP 2X Outdoor (min.): IP 23	IP 00, 2X, 3X, 4X, 5X, 6X	
Protection after removal of withdrawable part	8.2.101	Manufacturer's standard	As for connected position / Reduced protection to manufacturer's standard	
External mechanical impact (IK) NOTE IEC 61439-1 does not nominate specific IK codes.	8.2.1, 10.2.6	None	None	
Resistance to UV radiation (applies for outdoor assemblies only unless specified otherwise)	10.2.4	Indoor: Not applicable. Outdoor: Temperate climate	None	
Resistance to corrosion	10.2.2	Normal Indoor/Outdoor arrangements	None	
Ambient air temperature – Lower limit	7.1.1	Indoor: –5 °C Outdoor: –25 °C	None	
Ambient air temperature – Upper limit	7.1.1	40 °C	None	
Ambient air temperature – Daily average maximum	7.1.1, 9.2	35 °C	None	
Maximum relative humidity	7.1.2	Indoor: 50 % at 40 °C Outdoor: 100 % at 25 °C	None	
Pollution degree (of the installation environment)	7.1.3	Industrial: 3	1, 2, 3, 4	
Altitude	7.1.4	≤ 2 000 m	None	
EMC environment (A or B)	9.4, 10.12, Annex J	A/B	A/B	
Special service conditions (e.g. vibration, exceptional condensation, heavy pollution, corrosive environment, strong electric or magnetic fields, fungus, small creatures, explosion hazards, heavy vibration and shocks,	7.2, 8.5.4, 9.3.3 Table 7,	No special service conditions	None	

Characteristics	Reference clause or subclause	Default arrangement ^b	Options listed in standard	User requirement ^a
earthquakes)				
Installation method				
Type	3.3, 5.6	Manufacturer's standard	Various e.g. floor standing / wall mounted	
Stationary/Movable	3.5	Stationary	Stationary / movable	
Maximum overall dimensions and weight	5.6, 6.2.1	Manufacturer's standard, according to application	None	
External conductor type(s)	8.8	Manufacturer's standard	Cable / Busbar Trunking System	
Direction(s) of external conductors	8.8	Manufacturer's standard	None	
External conductor material	8.8	Copper	Copper / aluminium	
External phase conductor, cross sections, and terminations	8.8	As defined within the standard	None	
External PE, N, PEN conductors cross sections, and terminations	8.8	As defined within the standard	None	
Special terminal identification requirements	8.8	Manufacturer's standard	None	
Storage and handling				
Maximum dimensions and weight of transport units	6.2.2, 10.2.5	Manufacturer's standard	None	
Methods of transport (e.g. forklift, crane)	6.2.2, 8.1.6	Manufacturer's standard	None	
Environmental conditions different from the service conditions	7.3	As service conditions	None	
Packing details	6.2.2	Manufacturer's standard	None	
Operating arrangements				
Access to manually operated devices	8.4		Authorized persons / Ordinary persons	
Location of manually operated devices	8.5.5	Easily accessible	None	
Isolation of load installation equipment items	8.4.2, 8.4.3.3, 8.4.6.2	Manufacturer's standard	Individual / groups / all	
Maintenance and upgrade capabilities				
Requirements related to accessibility for inspection and similar operations	8.4.6.2.2	No requirements for accessibility	None	
Requirements related to accessibility for maintenance in service by authorized persons	8.4.6.2.3	No requirements for accessibility	None	
Requirements related to accessibility for extension in service by authorized persons	8.4.6.2.4	No requirements for accessibility	None	
Method of functional units connection	8.5.1, 8.5.2	Manufacturer's standard	None	
Protection against direct contact with hazardous live internal parts during maintenance or upgrade (e.g. functional	8.4	No requirements for protection during	None	

Characteristics	Reference clause or subclause	Default arrangement ^b	Options listed in standard	User requirement ^a
units, main busbars, distribution busbars)		maintenance or upgrade		
Gangways	8.4.6.2.101	Basic protection	None	
Method of functional unit's connection NOTE This refers to the capability of removal and re-insertion of functional units.	8.5.101		F fixed connections D disconnectable connections W withdrawable connections	
Form of separation	8.101		Form 1, 2, 3, 4	
Capability to test individual operation of the auxiliary circuits relating to specified circuits while the functional unit is isolated	3.1.102, 3.2.102, 3.2.103, 8.5.101, Table 103		None	
Current carrying capability				
Rated current of the ASSEMBLY I_{nA} (amps)	3.8.9.1, 5.3, 8.4.3.2.3, 8.5.3, 8.8, 10.10.2, 10.10.3, 10.11.5, Annex E	Manufacturer's standard, according to application	None	
Rated current of circuits I_{nC} (amps)	5.3.2	Manufacturer's standard, according to application	None	
Rated diversity factor	5.4, 10.10.2.3, Annex E	As defined within the standard	RDF for groups of circuits / RDF for whole ASSEMBLY	
Ratio of cross section of the neutral conductor to phase conductors: phase conductors up to and including 16 mm ²	8.6.1	100 %	None	
Ratio of cross section of the neutral conductor to phase conductors: phase conductors above 16 mm ²	8.6.1	50 % (min. 16 mm ²)	None	
^a For exceptionally onerous applications, the user may need to specify more stringent requirements to those in the standard. ^b In some cases information declared by the ASSEMBLY manufacturer may take the place of an agreement.				

Bibliography

The bibliography of Part 1 is applicable.

National Annex NA
(informative)

Guide to the internal separation of ASSEMBLIES

The internal separation of ASSEMBLIES by barriers or partitions is specified in Clause 8.101 and is subject to agreement between the manufacturer and the user.

Table NA.1 gives additional information regarding different types of construction, based on typical practice in the United Kingdom. Other types of construction are not precluded, and it is not essential to adopt any of the listed types in order to comply with the requirements of this British Standard. However, in order to achieve agreement between manufacturers and users, it is recommended to adopt one of the listed types of construction.

Table NA.1 Forms of Separation

Main criteria	Sub-criteria	Form	Type of construction	
No separation		Form 1		
Separation of busbars from the functional units	Terminals for external conductors not separated from busbars	Form 2a		
	Terminals for external conductors separated from busbars	Form 2b	Type 1	Busbar separation is achieved by insulated covering, e.g. sleeving, wrapping or coatings ¹⁾
			Type 2	Busbar separation is by metallic or non-metallic rigid barriers or partitions
Separation of busbars from the functional units and separation of all functional units from one another	Terminals for external conductors not separated from busbars	Form 3a		
Separation of the terminals for external conductors from the functional units, but not from each other	Terminals for external conductors separated from busbars	Form 3b	Type 1	Busbar separation is achieved by insulated covering, e.g. sleeving, wrapping or coatings ¹⁾
			Type 2	Busbar separation is by metallic or non-metallic rigid barriers or partitions
Separation of busbars from the functional units and separation of all functional units from one another, including the terminals for external conductors which are an integral part of the functional unit	Terminals for external conductors in the same compartment as the associated functional unit	Form 4a	Type 1	Busbar separation is achieved by insulated covering, e.g. sleeving, wrapping or coatings ¹⁾ Cables may be glanded elsewhere
			Type 2	Busbar separation is by metallic or non-metallic rigid barriers or partitions Cables may be glanded elsewhere
			Type 3	Busbar separation is by metallic or non-metallic rigid barriers or partitions The termination for each functional unit has its own integral glanding facility
	Terminals for external conductors not in the same compartment as the associated functional unit, but in individual, separate, enclosed protected spaces or compartments	Form 4b	Type 4	Busbar separation is achieved by insulated covering, e.g. sleeving, wrapping or coatings ¹⁾ Cables may be glanded elsewhere
			Type 5	Busbar separation is by metallic or non-metallic rigid barriers or partitions Terminals may be separated by insulated coverings ¹⁾ and glanded in common cabling chamber(s)
			Type 6	All separation requirements are by metallic or non-metallic rigid barriers or partitions Cables are glanded in common cabling chamber(s)
			Type 7	All separation requirements are by metallic or non-metallic rigid barriers or partitions The termination for each functional unit has its own integral glanding facility

¹⁾ See Clause 8.4.2.2 of Part 1 in relation to protection against contact with live parts.

NOTE Conductors which are connected to a functional unit but where they are external to its compartment or enclosed protected space (e.g. control cables connected to a common marshalling compartment) are not considered to form part of the functional unit.

This page deliberately set blank

British Standards Institution (BSI)

BSI is the national body responsible for preparing British Standards and other standards-related publications, information and services.

BSI is incorporated by Royal Charter. British Standards and other standardization products are published by BSI Standards Limited.

About us

We bring together business, industry, government, consumers, innovators and others to shape their combined experience and expertise into standards-based solutions.

The knowledge embodied in our standards has been carefully assembled in a dependable format and refined through our open consultation process. Organizations of all sizes and across all sectors choose standards to help them achieve their goals.

Information on standards

We can provide you with the knowledge that your organization needs to succeed. Find out more about British Standards by visiting our website at bsigroup.com/standards or contacting our Customer Services team or Knowledge Centre.

Buying standards

You can buy and download PDF versions of BSI publications, including British and adopted European and international standards, through our website at bsigroup.com/shop, where hard copies can also be purchased.

If you need international and foreign standards from other Standards Development Organizations, hard copies can be ordered from our Customer Services team.

Subscriptions

Our range of subscription services are designed to make using standards easier for you. For further information on our subscription products go to bsigroup.com/subscriptions.

With **British Standards Online (BSOL)** you'll have instant access to over 55,000 British and adopted European and international standards from your desktop. It's available 24/7 and is refreshed daily so you'll always be up to date.

You can keep in touch with standards developments and receive substantial discounts on the purchase price of standards, both in single copy and subscription format, by becoming a **BSI Subscribing Member**.

PLUS is an updating service exclusive to BSI Subscribing Members. You will automatically receive the latest hard copy of your standards when they're revised or replaced.

To find out more about becoming a BSI Subscribing Member and the benefits of membership, please visit bsigroup.com/shop.

With a **Multi-User Network Licence (MUNL)** you are able to host standards publications on your intranet. Licences can cover as few or as many users as you wish. With updates supplied as soon as they're available, you can be sure your documentation is current. For further information, email bsmusales@bsigroup.com.

BSI Group Headquarters

389 Chiswick High Road London W4 4AL UK

Revisions

Our British Standards and other publications are updated by amendment or revision.

We continually improve the quality of our products and services to benefit your business. If you find an inaccuracy or ambiguity within a British Standard or other BSI publication please inform the Knowledge Centre.

Copyright

All the data, software and documentation set out in all British Standards and other BSI publications are the property of and copyrighted by BSI, or some person or entity that owns copyright in the information used (such as the international standardization bodies) and has formally licensed such information to BSI for commercial publication and use. Except as permitted under the Copyright, Designs and Patents Act 1988 no extract may be reproduced, stored in a retrieval system or transmitted in any form or by any means – electronic, photocopying, recording or otherwise – without prior written permission from BSI. Details and advice can be obtained from the Copyright & Licensing Department.

Useful Contacts:

Customer Services

Tel: +44 845 086 9001

Email (orders): orders@bsigroup.com

Email (enquiries): cservices@bsigroup.com

Subscriptions

Tel: +44 845 086 9001

Email: subscriptions@bsigroup.com

Knowledge Centre

Tel: +44 20 8996 7004

Email: knowledgecentre@bsigroup.com

Copyright & Licensing

Tel: +44 20 8996 7070

Email: copyright@bsigroup.com



...making excellence a habit.™