

BS EN 61347-2-3:2011



BSI Standards Publication

Lamp control gear

Part 2-3: Particular requirements for a.c.
and/or d.c supplied electronic control gear
for fluorescent lamps

bsi.

...making excellence a habit.™

National foreword

This British Standard is the UK implementation of EN 61347-2-3:2011, incorporating corrigendum October 2011. It is identical to IEC 61347-2-3:2011, incorporating corrigendum September 2011. It supersedes BS EN 61347-2-3:2001+A2:2006, BS EN 61347-2-4:2001, BS EN 61347-2-5:2001 and BS EN 61347-2-6:2001, which will be withdrawn on 23 June 2014.

The UK participation in its preparation was entrusted by Technical Committee CPL/34, Lamps and Related Equipment, to Subcommittee CPL/34/3, Auxiliaries for lamps.

A list of organizations represented on this committee can be obtained on request to its secretary.

This publication does not purport to include all the necessary provisions of a contract. Users are responsible for its correct application.

Compliance with a British Standard cannot confer immunity from legal obligations.

© BSI 2011

ISBN 978 0 580 58762 7

ICS 85.040; 85.060

This British Standard was published under the authority of the Standards Policy and Strategy Committee on 31 December 2011.

Amendments and Corrigenda issued since publication

Date	Text affected
------	---------------

English version

**Lamp control gear -
Part 2-3: Particular requirements for a.c. and/or d.c. supplied electronic
control gear for fluorescent lamps
(IEC 61347-2-3:2011)**

Appareillages de lampes -
Partie 2-3: Exigences particulières pour
les appareillages électroniques alimentés
en courant alternatif et/ou en courant
continu pour lampes fluorescentes
(CEI 61347-2-3:2011)

Geräte für Lampen -
Teil 2-3: Besondere Anforderungen an
wechsel- und/oder gleichstromversorgte
elektronische Betriebsgeräte für
Leuchtstofflampen
(IEC 61347-2-3:2011)

This European Standard was approved by CENELEC on 2011-06-23. CENELEC members are bound to comply with the CEN/CENELEC Internal Regulations which stipulate the conditions for giving this European Standard the status of a national standard without any alteration.

Up-to-date lists and bibliographical references concerning such national standards may be obtained on application to the Central Secretariat or to any CENELEC member.

This European Standard exists in three official versions (English, French, German). A version in any other language made by translation under the responsibility of a CENELEC member into its own language and notified to the Central Secretariat has the same status as the official versions.

CENELEC members are the national electrotechnical committees of Austria, Belgium, Bulgaria, Croatia, Cyprus, the Czech Republic, Denmark, Estonia, Finland, France, Germany, Greece, Hungary, Iceland, Ireland, Italy, Latvia, Lithuania, Luxembourg, Malta, the Netherlands, Norway, Poland, Portugal, Romania, Slovakia, Slovenia, Spain, Sweden, Switzerland and the United Kingdom.

CENELEC

European Committee for Electrotechnical Standardization
Comité Européen de Normalisation Electrotechnique
Europäisches Komitee für Elektrotechnische Normung

Management Centre: Avenue Marnix 17, B - 1000 Brussels

Foreword

The text of document 34C/955/FDIS, future edition 2 of IEC 61347-2-3, prepared by SC 34C, Auxiliaries for lamps, of IEC TC 34, Lamps and related equipment, was submitted to the IEC-CENELEC parallel vote and was approved by CENELEC as EN 61347-2-3 on 2011-06-23.

This standard is to be used in conjunction with EN 61347-1:2008 + A1:2011.

This European Standard supersedes EN 61347-2-3:2001 + corrigendum July 2003 + corrigendum December 2010 + A1:2004 + A2:2006, EN 61347-2-4:2001 + corrigendum July 2003 + corrigendum December 2010, EN 61347-2-5:2001 + corrigendum July 2003 + corrigendum December 2010 and EN 61347-2-6:2001 + corrigendum July 2003 + corrigendum December 2010.”

The significant revisions with respect to EN 61347-2-3:2001 are:

- rectifying test conditions when dimming;
- construction requirements;
- measurement circuits and limits for HF leakage currents;
- modification of the structure to become a standard exclusively for a.c. and d.c. central supplied electronic control gear for general lighting and Annex J cover centrally supplied emergency control gear.

This part 2 supplements or modifies the corresponding clauses in EN 61347-1 so as to convert that publication into the European Standard: Particular requirements for a.c. and/or d.c. supplied electronic control gear for fluorescent lamps.

NOTE In this standard, the following print types are used:

- Requirements proper: in roman type.
- *Test specifications: in italic type.*
- Explanatory matter: in smaller roman type.

Attention is drawn to the possibility that some of the elements of this document may be the subject of patent rights. CEN and CENELEC shall not be held responsible for identifying any or all such patent rights.

The following dates were fixed:

- latest date by which the EN has to be implemented at national level by publication of an identical national standard or by endorsement (dop) 2012-03-23
- latest date by which the national standards conflicting with the EN have to be withdrawn (dow) 2014-06-23

Annex ZA has been added by CENELEC.

Endorsement notice

The text of the International Standard IEC 61347-2-3:2011 was approved by CENELEC as a European Standard without any modification.

In the official version, for Bibliography, the following notes have to be added for the standards indicated:

IEC 60598-2-22	NOTE	Harmonized as EN 60598-2-22.
IEC 61195	NOTE	Harmonized as EN 61195.
IEC 61199	NOTE	Harmonized as EN 61199.

Annex ZA (normative)

Normative references to international publications with their corresponding European publications

The following referenced documents are indispensable for the application of this document. For dated references, only the edition cited applies. For undated references, the latest edition of the referenced document (including any amendments) applies.

NOTE When an international publication has been modified by common modifications, indicated by (mod), the relevant EN/HD applies.

<u>Publication</u>	<u>Year</u>	<u>Title</u>	<u>EN/HD</u>	<u>Year</u>
IEC 60929	2011	AC and/or DC-supplied electronic control gear for tubular fluorescent lamps - Performance requirements	EN 60929	201X ¹⁾
IEC 61347-1 (mod) + A1	2007 2010	Lamp controlgear - Part 1: General and safety requirements	EN 61347-1 + A1	2008 2011
IEC 61347-2-7	201X ¹⁾	Lamp controlgear - Part 2-7: Particular requirements for battery supplied electronic controlgear for emergency lighting (self-contained)	EN 61347-2-7	201X ¹⁾
IEC 61547	-	Equipment for general lighting purposes - EMC immunity requirements	EN 61547	-

¹⁾ To be published.



IEC 61347-2-3

Edition 2.0 2011-05

INTERNATIONAL STANDARD

NORME INTERNATIONALE

Lamp control gear –

Part 2-3: Particular requirements for a.c. and/or d.c. supplied electronic control gear for fluorescent lamps

Appareillages de lampes –

Partie 2-3: Exigences particulières pour les appareillages électroniques alimentés en courant alternatif et/ou en courant continu pour lampes fluorescentes

INTERNATIONAL
ELECTROTECHNICAL
COMMISSION

COMMISSION
ELECTROTECHNIQUE
INTERNATIONALE

PRICE CODE
CODE PRIX



ICS 29.140.99

ISBN 978-2-88912-498-5

CONTENTS

FOREWORD.....	4
INTRODUCTION.....	6
1 Scope.....	7
2 Normative references	7
3 Terms and definitions	8
4 General requirements	8
5 General notes on tests	9
6 Classification.....	9
7 Marking	9
8 Protection against accidental contact with live parts	10
9 Terminals	10
10 Provisions for earthing.....	10
11 Moisture resistance and insulation.....	10
12 Electric strength	10
13 Thermal endurance test for windings	10
14 Fault conditions	10
15 Protection of associated components	10
16 Abnormal conditions	11
17 Behaviour of the control gear at end of lamp life.....	12
18 Construction.....	19
19 Creepage distances and clearances	19
20 Screws, current-carrying parts and connections.....	19
21 Resistance to heat, fire and tracking.....	19
22 Resistance to corrosion	19
Annex A (normative) Test to establish whether a conductive part is a live part which may cause an electric shock	24
Annex B (normative) Particular requirements for thermally protected lamp control gear	25
Annex C (normative) Particular requirements for electronic lamp control gear with means of protection against overheating.....	26
Annex D (normative) Requirements for carrying out the heating tests of thermally protected lamp control gear	27
Annex E (normative) Use of constant S other than 4 500 in t_w tests.....	28
Annex F (normative) Draught-proof enclosure.....	29
Annex G (normative) Explanation of the derivation of the values of pulse voltages	30
Annex H (normative) Tests	31
Annex I (normative) Measurement of high-frequency leakage current	32
Annex J (normative) Particular additional safety requirements for a.c., a.c./d.c. or d.c. supplied electronic control gear for emergency lighting	37
Annex K (informative) Components used in the asymmetric pulse test circuit (see Figure 1).....	41
Annex L (normative) Information for control gear design (from Annex E of IEC 61195).....	42
Bibliography.....	43

Figure 1 – Asymmetric pulse test circuit.....	14
Figure 2 – Asymmetric power detection circuit	16
Figure 3 – Open filament test circuits.....	19
Figure 4 – Circuit for testing rectifying effect.....	20
Figure 5 – Nomographs for the capacitive leakage current limits of HF-operated fluorescent lamps	23
Figure I.1 – Leakage current test arrangement for various fluorescent lamps	36
Table 1 – Relation between r.m.s. working voltage and maximum peak voltage	11
Table J.1 – Pulse voltages	40
Table K.1 – Material specification	41
Table K.2 – Transformer specification.....	41

INTERNATIONAL ELECTROTECHNICAL COMMISSION

LAMP CONTROL GEAR –**Part 2-3: Particular requirements for a.c. and/or d.c.
supplied electronic control gear for fluorescent lamps**

FOREWORD

- 1) The International Electrotechnical Commission (IEC) is a worldwide organization for standardization comprising all national electrotechnical committees (IEC National Committees). The object of IEC is to promote international co-operation on all questions concerning standardization in the electrical and electronic fields. To this end and in addition to other activities, IEC publishes International Standards, Technical Specifications, Technical Reports, Publicly Available Specifications (PAS) and Guides (hereafter referred to as "IEC Publication(s)"). Their preparation is entrusted to technical committees; any IEC National Committee interested in the subject dealt with may participate in this preparatory work. International, governmental and non-governmental organizations liaising with the IEC also participate in this preparation. IEC collaborates closely with the International Organization for Standardization (ISO) in accordance with conditions determined by agreement between the two organizations.
- 2) The formal decisions or agreements of IEC on technical matters express, as nearly as possible, an international consensus of opinion on the relevant subjects since each technical committee has representation from all interested IEC National Committees.
- 3) IEC Publications have the form of recommendations for international use and are accepted by IEC National Committees in that sense. While all reasonable efforts are made to ensure that the technical content of IEC Publications is accurate, IEC cannot be held responsible for the way in which they are used or for any misinterpretation by any end user.
- 4) In order to promote international uniformity, IEC National Committees undertake to apply IEC Publications transparently to the maximum extent possible in their national and regional publications. Any divergence between any IEC Publication and the corresponding national or regional publication shall be clearly indicated in the latter.
- 5) IEC itself does not provide any attestation of conformity. Independent certification bodies provide conformity assessment services and, in some areas, access to IEC marks of conformity. IEC is not responsible for any services carried out by independent certification bodies.
- 6) All users should ensure that they have the latest edition of this publication.
- 7) No liability shall attach to IEC or its directors, employees, servants or agents including individual experts and members of its technical committees and IEC National Committees for any personal injury, property damage or other damage of any nature whatsoever, whether direct or indirect, or for costs (including legal fees) and expenses arising out of the publication, use of, or reliance upon, this IEC Publication or any other IEC Publications.
- 8) Attention is drawn to the Normative references cited in this publication. Use of the referenced publications is indispensable for the correct application of this publication.
- 9) Attention is drawn to the possibility that some of the elements of this IEC Publication may be the subject of patent rights. IEC shall not be held responsible for identifying any or all such patent rights.

International Standard IEC 61347-2-3 has been prepared by subcommittee 34C: Auxiliaries for lamps, of IEC technical committee 34: Lamps and related equipment.

This standard shall be used in conjunction with IEC 61347-1 (2007) and its Amendment 1 (2010).

This second edition cancels and replaces the first edition published in 2000, its Amendment 1 (2004) and its Amendment 2 (2006), IEC 61347-2-4 published in 2000, IEC 61347-2-5 published in 2000 and IEC 61347-2-6 published in 2000.

The significant revisions with respect to the first edition are:

- rectifying test conditions when dimming;
- construction requirements;
- measurement circuits and limits for HF leakage currents;
- modification of the structure to become a standard exclusively for a.c. and d.c. centrally supplied electronic control gear for general lighting and Annex J cover centrally-supplied emergency control gear.

The text of this standard is based on the following documents:

FDIS	Report on voting
34C/955/FDIS	34C/968/RVD

Full information on the voting for the approval of this standard can be found in the report on voting indicated in the above table.

This publication has been drafted in accordance with the ISO/IEC Directives, Part 2.

This part 2 supplements or modifies the corresponding clauses in IEC 61347-1 so as to convert that publication into the IEC standard: Particular requirements for a.c. and/or d.c. centrally supplied electronic control gear for fluorescent lamps.

NOTE In this standard, the following print types are used:

- Requirements proper: in roman type.
- *Test specifications: in italic type.*
- Explanatory matter: in smaller roman type.

A list of all parts of the IEC 61347 series, published under the general title: *Lamp control gear*, can be found on the IEC website.

The committee has decided that the contents of this publication will remain unchanged until the stability date indicated on the IEC web site under "<http://webstore.iec.ch>" in the data related to the specific publication. At this date, the publication will be

- reconfirmed,
- withdrawn,
- replaced by a revised edition, or
- amended.

INTRODUCTION

This second edition of IEC 61347-2-3, published in conjunction with IEC 61347-1, represents an review of the first edition of IEC 61347-2-3. The formatting into separately published parts provides for ease of future amendments and revisions. Additional requirements will be added as and when a need for them is recognized.

This standard, and the parts which make up IEC 61347-2, in referring to any of the clauses of IEC 61347-1, specify the extent to which such a clause is applicable and the order in which the tests are to be performed; they also include additional requirements, as necessary. All parts which make up IEC 61347-2 are intended to be self-contained and, therefore, do not include references to each other. However, for the case of emergency lighting lamp control gear, some cross-referencing has been necessary.

Where the requirements of any of the clauses of IEC 61347-1 are referred to in this standard by the phrase "The requirements of clause n of IEC 61347-1 apply", this phrase is interpreted as meaning that all requirements of the clause in question of part 1 apply, except any which are clearly inapplicable to the specific type of lamp control gear covered by this particular part of IEC 61347-2.

LAMP CONTROL GEAR –

Part 2-3: Particular requirements for a.c. and/or d.c. supplied electronic control gear for fluorescent lamps

1 Scope

This part of IEC 61347 specifies particular safety requirements for electronic control gear for use on a.c. and d.c. supplies up to 1 000 V at 50 Hz or 60 Hz with operating frequencies deviating from the supply frequency, associated with fluorescent lamps as specified in IEC 60081 and IEC 60901, and other fluorescent lamps for high-frequency operation.

Performance requirements are the subject of IEC 60929.

Particular requirements for electronic control gear with means protection against overheating are given in Annex C.

For emergency lighting operation, particular requirements for control gear operated from a central supply are given in Annex J. Performance requirements appropriate to the safe operation of emergency lighting are also contained in Annex J.

Requirements for emergency lighting control gear operating from non-centralised power supplies are given in IEC 61347-2-7.

NOTE Performance requirements detailed by Annex J are those considered to be safety-related with respect to reliable emergency operation.

2 Normative references

For the purposes of this document, the normative references given in Clause 2 of IEC 61347-1 which are mentioned in this standard apply, together with the following normative references.

IEC 60929: 2011, *AC and/or DC-supplied electronic control gear for tubular fluorescent lamps – Performance requirements*

IEC 61347-1:2007, *Lamp control gear – Part 1: General and safety requirements* Amendment 1(2010)

IEC 61347-2-7, ___ *Lamp control gear – Part 2-7: Particular requirements for battery supplied electronic control gear for emergency lighting (self-contained)*¹

IEC 61547, *Equipment for general lighting purposes – EMC immunity requirements*

¹ To be published

3 Terms and definitions

For the purposes of this document, the terms and definitions of Clause 3 of IEC 61347-1 apply, together with the following.

3.1

a.c. supplied electronic control gear

mains-supplied a.c. to a.c. inverter including stabilizing elements for starting and operating one or more fluorescent lamps, generally at high frequency

3.2

maximum value of lamp power (of a controllable control gear)

lamp power (light output) which complies with 8.1 of IEC 60929, unless otherwise declared by the manufacturer or responsible vendor

3.3

maximum allowed peak voltage

highest permitted peak voltage across any insulation under open-circuit condition and any normal and abnormal operating conditions

The maximum peak voltage is related to the declared r.m.s. working voltage; see Table 1.

3.4

minimum value of lamp power (of a controllable control gear)

lowest percentage of the lamp power defined in 3.2 declared by the manufacturer or responsible vendor

3.5

a.c./d.c. supplied electronic control gear for maintained emergency lighting

mains/battery-supplied a.c./d.c. to a.c. inverter including stabilizing elements for starting and operating one or more fluorescent lamps, generally at high frequency for emergency lighting

3.6

cathode dummy resistor

cathode substitution resistor as specified on the relevant lamp data sheet of IEC 60081 or IEC 60901 or as declared by the relevant lamp manufacturer or by the responsible vendor

3.7

d.c. supplied electronic control gear

d.c. supplied electronic control gear or inverter includes stabilisation elements for starting and operating one or more tubular fluorescent lamps, generally at high frequency

4 General requirements

The requirements of Clause 4 of IEC 61347-1 apply, together with the following additional requirement:

AC/d.c. electronic control gear for emergency lighting shall comply with the requirements of Annex J.

5 General notes on tests

The requirements of Clause 5 of 61347-1 apply together with the following additional requirement:

The following number of specimens shall be submitted for testing:

- one unit for the tests of Clause 6 to 12 and 15 to 22;
- one unit for the test of Clause 14 (additional units or components, where necessary, may be required in consultation with the manufacturer).

Tests to meet the safety requirements for a.c./d.c. supplied electronic control gear for emergency lighting are made under the conditions specified in Annex J.

6 Classification

The requirements of Clause 6 of IEC 61347-1 apply.

7 Marking

Control gear which forms an integral part of the luminaire need not be marked.

7.1 Mandatory markings

In accordance with the requirements of 7.2 of IEC 61347-1, control gear, other than integral control gear, shall be clearly and durably marked with the following mandatory markings:

- items a), b), c), d), e), k) and l) of 7.1 of IEC 61347-1, together with
- the symbol for earthing, as applicable;
- for controllable control gear, the control terminals shall be identified;
- a declaration of the maximum working voltage (r.m.s.) according to 12.2 between
 - output terminals;
 - any output terminal and earth.

Marking for each of these two values shall be in steps of 10 V when the working voltage is equal to, or less than, 500 V, and in steps of 50 V when the working voltage is higher than 500 V. The marking of maximum working voltage is referenced in two situations, the maximum between output terminals and the maximum between any output terminal and earth. It is acceptable for only the higher of these two voltages to be marked.

Marking shall be U-OUT=...V.

7.2 Information to be provided, if applicable

In addition to the above mandatory markings, the following information, if applicable, shall be given either on the control gear, or be made available in the manufacturer's catalogue or similar:

- items h), i), and j) given in 7.1 of IEC 61347-1;
- information regarding voltage polarity reversal protection for d.c. supplied control gear only.

8 Protection against accidental contact with live parts

The requirements of Clause 10 of IEC 61347-1 apply.

9 Terminals

The requirements of Clause 8 of IEC 61347-1 apply.

10 Provisions for earthing

The requirements of Clause 9 of IEC 61347-1 apply.

11 Moisture resistance and insulation

The requirements of Clause 11 of IEC 61347-1 apply together with the following additional requirements:

The leakage current that may occur from contact with fluorescent lamps operated at high frequency from a.c. supplied electronic control gear shall not exceed the values in Figure 5 when measured in accordance with Annex I. The values are in r.m.s. values.

The limits of leakage current values for frequencies between the values shown in Figure 5 should be obtained by calculation according to the formula in the figure (under consideration).

NOTE Limits of leakage current values for frequencies above 50 kHz are under consideration.

Compliance with these requirements is checked in accordance with Annex I.

12 Electric strength

The requirements of Clause 12 of IEC 61347-1 apply.

13 Thermal endurance test for windings

The requirements of Clause 13 of IEC 61347-1 do not apply.

14 Fault conditions

The requirements of Clause 14 of IEC 61347-1 apply.

An additional fault condition to be applied to d.c. supplied control gear is the supply voltage polarity shall be reversed.

15 Protection of associated components

15.1 Maximum peak voltage under normal operation conditions

Under conditions of normal operation, verified with dummy cathode resistors inserted and conditions of abnormal operation, as specified in Clause 16, the voltage at the output terminals shall at no time exceed the maximum permitted peak value specified in Table 1.

Table 1 – Relation between r.m.s. working voltage and maximum peak voltage

Voltage at output terminals	
RMS working voltage V	Maximum permitted peak voltage V
250	2 200
500	2 900
750	3 100
1 000	3 200
NOTE Linear interpolation between the given voltage steps is allowed.	

15.2 Maximum working voltage under normal and abnormal operating conditions

Under normal operating conditions and abnormal operating conditions as specified in Clause 16, except for the rectifying effect, and from 5 s after the switch on or beginning of the starting process, the voltage at the output terminals shall not exceed the maximum working voltage for which the control gear is declared.

15.3 Maximum working voltage and rectifying effect

In the case of a rectifying effect, i.e. abnormal operating condition according to 16.1 d), the r.m.s. voltage at the output terminal shall not exceed the maximum permitted value for which the control gear is designed for a period longer than 30 s after switch-on, or beginning of the starting process.

For control gear which makes more than one attempt to start a failed lamp, the combined duration of voltages above the maximum working voltage for which the ballast is declared shall not exceed 30 s.

Circuit for testing the rectifying effect and the information regarding the recovery time t_{rr} of the diode are given Figure 4 (4a, 4b and 4c).

15.4 Output voltage and abnormal conditions

For the tests of 15.1 and 15.2, the output voltages measured shall be those between any output terminal and earth. Additionally, voltages that appear between output terminals shall be measured in cases where the voltage is present across insulation barriers within associated components.

15.5 Isolation of input terminals of controllable electronic control gear

For controllable electronic control gear, the control input shall be isolated from the mains circuit by insulation at least equal to basic insulation.

NOTE This requirement does not apply to those control gear where control signals are injected via the supply terminals or where the control signals are completely isolated from the ballast by being transmitted remotely from infra-red or radio wave transmitters.

If SELV is to be used, then double or reinforced insulation is required.

16 Abnormal conditions

16.1 Abnormal conditions for a.c. and d.c. control gears

The control gear shall not impair safety when operated under abnormal conditions at any voltage between 90 % and 110 % of the rated supply voltage.

Compliance is checked by the following test.

Each of the following conditions shall be applied with the control gear operating according to the manufacturer's instructions (including a heat sink, if specified) for 1 h:

- a) the lamp or one of the lamps is not inserted;
- b) the lamp does not start because one of the cathodes is broken;
- c) the lamp does not start although the cathode circuits are intact (de-activated lamp);
- d) the lamp operates, but one of the cathodes is de-activated or broken (rectifying effect);
- e) short circuit of the starter switch, if any.

For the test simulating operation with a de-activated lamp, a resistor is connected in place of each lamp cathode. The resistor value is derived from the value of the nominal running current of the lamp prescribed in the relevant lamp data sheet of IEC 60081 and IEC 60901 and substituted in the following equation:

$$R = \frac{11,0}{2,1 \times I_n} \Omega$$

where

I_n is the rated lamp current of the lamp.

For lamps not covered by IEC 60081 and IEC 60901, the values declared by the lamp manufacturer shall be used.

When testing electronic ballasts for the rectifying effect, the circuit shown in Figure 1 is used. The anode of the rectifier is connected to the midpoints of appropriate equivalent resistors; the cathode of the rectifier is connected to the short circuited lamp electrode. The direction of the rectifying effect is chosen so as to give the most unfavourable conditions. If necessary, the lamp is started using a suitable device.

During and at the end of the tests specified under items a) to e), the control gear shall show no defect impairing safety nor shall any smoke be produced.

16.2 Additional abnormal conditions for d.c. supplied electronic control gear

If the d.c. supplied electronic control gear declared by the manufacturer as a protected control gear against the reversal polarity of the supply voltage, then the following test is applied:

The d.c. supplied electronic control gear shall be connected for 1 h with the reversal supply voltage at the maximum value of the rated voltage with the maximum lamp power declared by the manufacturer.

During and at the end of the test the electronic control gear shall operate the lamp(s) normally without any defects.

17 Behaviour of the control gear at end of lamp life

17.1 End of lamp life effects

At the end of lamp life, the control gear shall behave in such a way that no overheating of lamp cap(s) occurs at any voltage between 90 % and 110 % of the rated supply voltage.

For the test simulating end of lamp life effects, three tests are described:

- a) asymmetric pulse test (described in 17.2);
- b) asymmetric power dissipation test (described in 17.3);
- c) open filament test (described in 17.4).

Any of the three tests may be used to qualify electronic control gear. The control gear manufacturer shall determine which of the three tests will be used to test a given control gear based on the design of that particular control gear circuit. The chosen test method shall be indicated in the control gear manufacturer's literature.

NOTE 1 Checking control gear against their capability to cope with the partial rectifying effect is recommended by IEC 61195, Annex E, and IEC 61199, Annex H.

NOTE 2 In Japan, only the requirements of 17.1 b) are applied for electronic control gear.

Lamps used in the ballast test circuits shall be new lamps seasoned for 100 h.

17.2 Asymmetric pulse test

The ballast shall have adequate protection to prevent lamp cap overheating at the end of the lamp life cycle. Compliance is checked by the following test.

The following values of maximum cathode power P_{\max} apply:

- for 13 mm (T4) lamps, $P_{\max} = 5,0 \text{ W}$;
- for 16 mm (T5) lamps, $P_{\max} = 7,5 \text{ W}$.

(Other diameters are under study.)

Test procedure:

Refer to the schematic diagram in Figure 1.

If only one connection per electrode is available at the control gear and/or lamp, T1 shall be removed and then the control gear shall be connected to J2 and the lamp to J4. The control gear manufacturer should be asked which of the output terminals has to be connected to J4 and, in case two output terminals per electrode exist, whether they can be short-circuited or be bridged with a resistor.

- (1) Close switches S1 and S4, and set switch S2 to position A.
- (2) Turn on the control gear under test and allow lamp(s) to warm up for 5 min.
- (3) Close S3, open S1, and wait for 15 s. Open S4 and wait for 15 s.
- (4) Measure the sum of the average power dissipated in the power resistors, R1A to R1C and R2A and R2B, and the Zener diodes, D5 to D8.

NOTE The power should be measured as the average value of the product of the voltage between terminals J5 and J6 times the current flowing from J8 to J7. The voltage should be measured with a differential voltage probe, and the current should be measured with a d.c. current probe. A digital oscilloscope can be used for the multiplication and averaging functions. If the control gear operates in a cycling mode, the averaging interval should be set to cover an integer number of cycles. (Each cycle is typically greater than 1 s.) The sampling rate and number of samples included in the calculations should be sufficient to avoid aliasing errors.

The power dissipation shall be below P_{\max} .

If the power dissipation is greater than P_{\max} , the control gear has failed and the test is discontinued.

- (5) Close S1 and S4.
- (6) Set S2 to position B.

- (7) Repeat steps (2), (3) and (4).
The control gear shall pass both position "A" and position "B" tests.
- (8) For multi-lamp control gear, repeat steps (1) to (7) for each lamp position.
A multi-lamp control gear shall pass the tests for each lamp position.
- (9) For control gear that operate multiple lamp types (e.g. 26 W, 32 W, 42 W), each lamp type specified shall be tested. Repeat steps (1) to (8) for each lamp type.

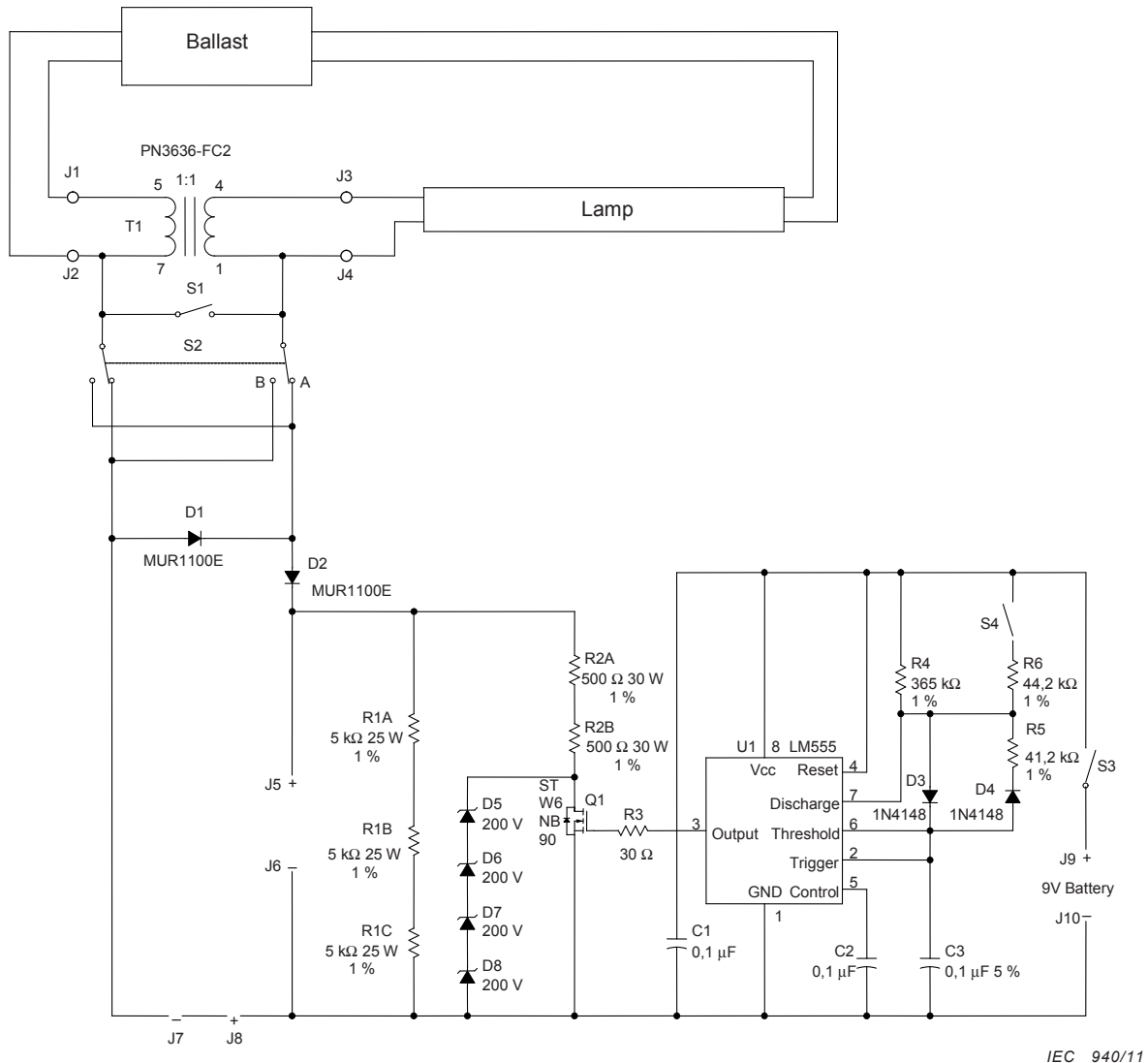


Figure 1 – Asymmetric pulse test circuit

NOTE FET Q1 should be on for 3 ms and off for 3 ms when S4 is closed, and on for 27 ms and off for 3 ms when S4 is open.

A list of material and transformer specifications is given in Annex K. Any other transformer components with the same functionality are permitted.

17.3 Asymmetric power test

The control gear shall have adequate protection to prevent lamp cap overheating at the end of the lamp life cycle. Compliance is checked by the following test.

The following values of maximum cathode power P_{\max} apply:

- for 13 mm (T4) lamps, $P_{\max} = 5,0 \text{ W}$;
- for 16 mm (T5) lamps, $P_{\max} = 7,5 \text{ W}$.

(Other diameters are under study.)

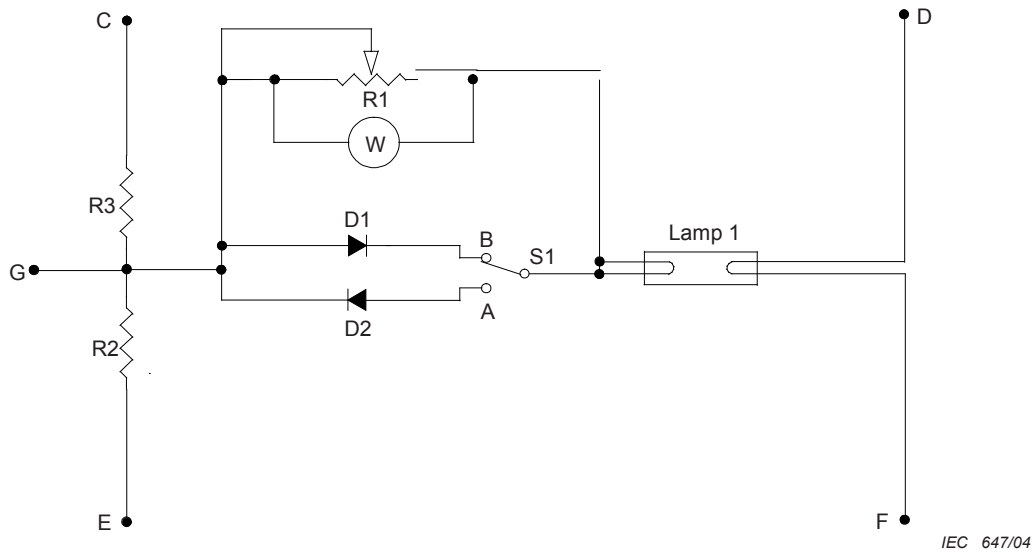
Test procedure:

Refer to the schematic diagram in Figure 2.

- (1) Set switch S1 to position A.
- (2) Set resistance of resistor R1 to 0 (zero) Ω .
- (3) Start lamp(s) by turning on power to control gear under test and allow lamp(s) to warm up for 5 min.
- (4) Increase the resistance of R1 rapidly, (within 15 s) until the power dissipated by resistor R1 equals the test wattage value of 10 W for a T4 lamp or 15 W for a T5 lamp. If the control gear limits the power in R1 to a value less than the test wattage, set R1 at the value which produces the maximum wattage. If the control gear switches off before reaching the test wattage, continue with (5). If the control gear does not switch off and limits the power in R1 to a value less than the test wattage, set R1 at the value which produces the maximum wattage.
- (5) If the test wattage value was reached in step (4), wait for an additional 15 s. If the test wattage value was not reached in step (4), wait for an additional 30 s. Measure the power in R1.

The power dissipation in resistor R1 shall be below or equal to P_{\max} . If the power dissipation in resistor R1 is greater than P_{\max} , The control gear has failed and the test is discontinued.

- (6) Turn off power to control gear. Set switch S1 to position B.
- (7) Repeat test procedure steps (3) to (5) above.
The control gear shall pass both position "A" and position "B" tests.
- (8) For multi-lamp control gear, repeat test procedure steps (1) to (7) for each lamp position.
A multi-lamp control gear shall pass the tests for each lamp position.
- (9) For control gear that operate multiple lamp types (e.g. 26 W, 32 W, 42 W) each lamp type specified shall be tested. Repeat steps (1) to (8) for each lamp type.



NOTE 1 R2 = R3 = $x \Omega$ (this resistance is $\frac{1}{2}$ resistance of hot cathode – refer to lamp data sheet).

NOTE 2 C, D, E and F represent cathode connections for the ballast.

NOTE 3 For instant start control gear, connection G is connected to one and the combined D and F are connected to the other terminal.

Figure 2 – Asymmetric power detection circuit

17.4 Open filament test

17.4.1 Selection

The control gear shall have adequate protection to prevent lamp cap overheating at the end of the lamp life cycle under open filament conditions. Compliance is checked by either test procedure A or B as determined by the value of I_{max} below.

During the test, the following values of maximum lamp current I_{max} apply:

- for 13 mm (T4) lamps, $I_{max} = 1 \text{ mA}$;
- for 16 mm (T5) lamps, $I_{max} = 1,5 \text{ mA}$.

(Other diameters are under study.)

If these current values are exceeded, test procedure B shall be applied; otherwise, test procedure A shall be applied.

17.4.2 Measurements to be carried out prior to test procedure A

Determine the r.m.s. currents, $I_{LL}(1)$, $I_{LH}(1)$, $I_{LL}(2)$, $I_{LH}(2)$, at the control gear output terminals, by using a current probe and mark the terminals respectively, where:

- $I_{LL}(1)$ is the lower of the r.m.s. currents through lead-in wire of electrode 1.
- $I_{LH}(1)$ is the higher of the r.m.s. currents through lead-in wire of electrode 1.
- $I_{LL}(2)$ is the lower of the r.m.s. currents through lead-in wire of electrode 2.
- $I_{LH}(2)$ is the higher of the r.m.s. currents through lead-in wire of electrode 2.

Connect the circuit according to Figure 3a.

17.4.3 Test procedure A

Refer to schematic diagram in Figure 3a.

- (1) Set S to position 1.
- (2) Turn on the ballast under test and allow lamp(s) to warm up for 5 min.
- (3) Set S to position 2 and wait for 30 s.
- (4) Measure the r.m.s. current value of I_{lamp} with the current probe near to the lamp end. If I_{lamp} is pulsing, the r.m.s. value shall be computed over one complete pulse cycle including the off time.

The lamp discharge current I_{lamp} shall not be greater than I_{max} .

If the lamp discharge current is greater than I_{max} , the control gear has failed and the test is discontinued.

Refer to Figure 3b.

- (5) Set S to position 1.
- (6) Turn on the control gear under test and allow lamp(s) to warm up for 5 min.
- (7) Set S to position 2 and wait for 30 s.
- (8) Measure the r.m.s. current value of I_{lamp} with the current probe near to the lamp end. If I_{lamp} is pulsing, the r.m.s. value shall be computed over one complete pulse cycle including the off time.

The lamp discharge current I_{lamp} shall not be greater than I_{max} .

- (9) For multi-lamp control gear, repeat test procedure steps (1) to (8) for each lamp position.

A multi-lamp control gear shall pass the tests for each lamp position to pass the end-of-lamp-life test.

- (10) For control gear that operate multiple lamp types (e.g. 26 W, 32 W, 42 W), each lamp type specified shall be tested. Repeat steps (1) to (9) for each lamp type.

17.4.4 Test procedure B

Connect the lamp as shown in Figures 3a and 3b with the measurement arrangement according to Figure 3c. If the control gear has an isolation transformer, connect the 1 MΩ resistor to the corresponding terminal defined in 17.4.2.

- (1) Set S to position 1.
- (2) Turn on the control gear under test and allow lamp(s) to warm up for 5 min.
- (3) Set S to position 2 wait for 30 s.

Measure the r.m.s. voltage value with the differential probe placed as indicated in Figure 5c. If the voltage is pulsing, the r.m.s. value shall be computed over one complete pulse cycle including the off time.

- (4) The voltage shall not be greater than 25 % of the rated lamp voltage. If the voltage is greater than 25 %, discontinue the test.

Refer to Figure 3b.

- (5) Repeat test procedure steps (1) to (4) above.
- (6) For multi-lamp control gear, repeat test procedure steps (1) to (5) for each lamp position.

A multi-lamp control gear shall pass the test for each lamp position to pass the end-of-lamp life test.

- (7) For control gear which operate multiple lamp types (e.g. 26 W, 32 W, 42 W), each lamp type specified shall be tested.

Repeat steps (1) to (6) for each lamp type. A multiple lamp control gear shall pass the test for each lamp type.

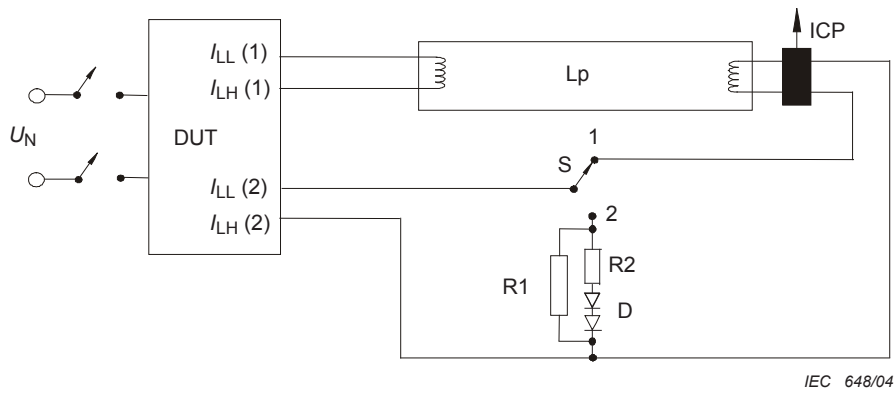


Figure 3a – Open filament test circuit; electrode (1) check

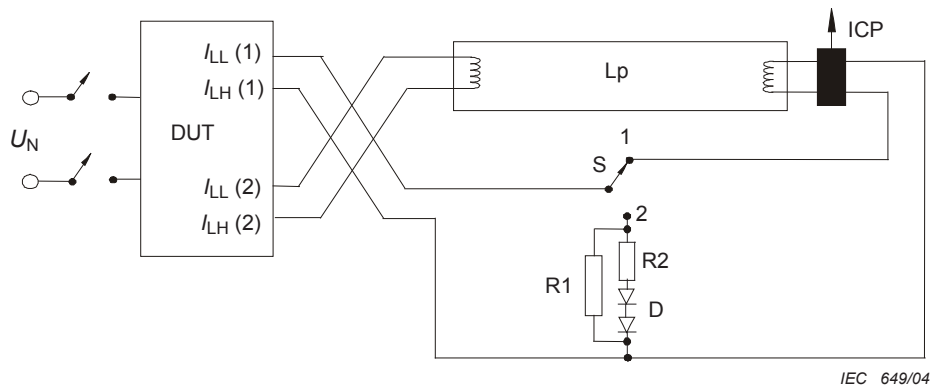
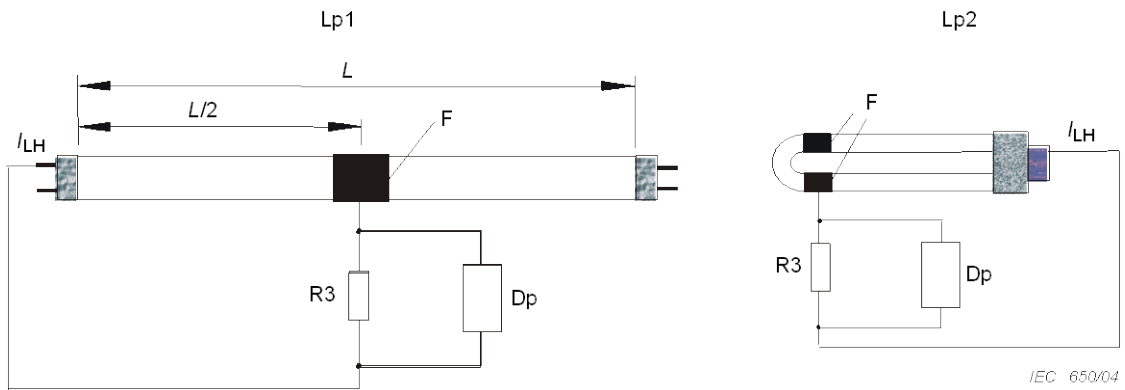


Figure 3b – Open filament test circuit; electrode (2) check



NOTE Use terminal $I_{LH}(2)$ of Figure 3a or $I_{LH}(1)$ of Figure 3b.

Figure 3c – Detection of lamp current

Key to Figures 3a, 3b and 3c

Lp lamp

Lp1 straight lamp; copper foil width 4 cm

Lp2 bended lamp (single capped and circular); copper foil width: twice 2 cm; both foils connected together

U_N supply

F copper foil, width 4 cm and 2 cm × 2 cm

ICP I_{lamp} current probe

R1 = 10 kΩ

R2 = 22 Ω, 7 W

R3 = 1 MΩ

D fast diodes

DUT device (control gear) under test

Dp differential probe < 10 pF

L lamp length

Figure 3 – Open filament test circuits

18 Construction

The requirements of Clause 15 of IEC 61347-1 apply.

19 Creepage distances and clearances

The requirements of Clause 16 of IEC 61347-1 apply.

20 Screws, current-carrying parts and connections

The requirements of Clause 17 of IEC 61347-1 apply.

21 Resistance to heat, fire and tracking

The requirements of Clause 18 of IEC 61347-1 apply.

22 Resistance to corrosion

The requirements of Clause 19 of IEC 61347-1 apply.

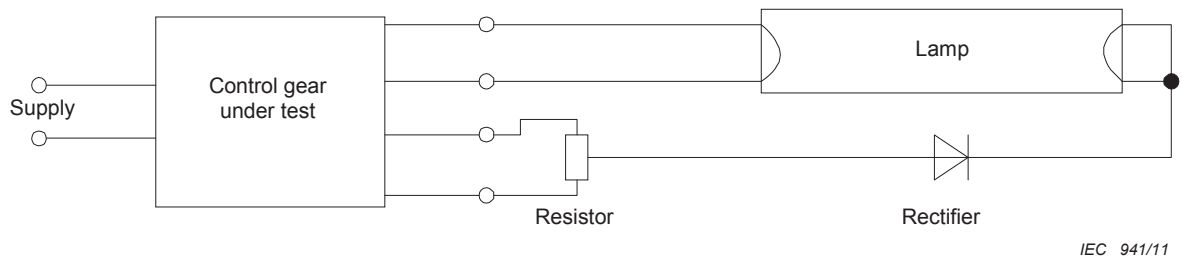


Figure 4a – Testing the first direction of the rectifying effect

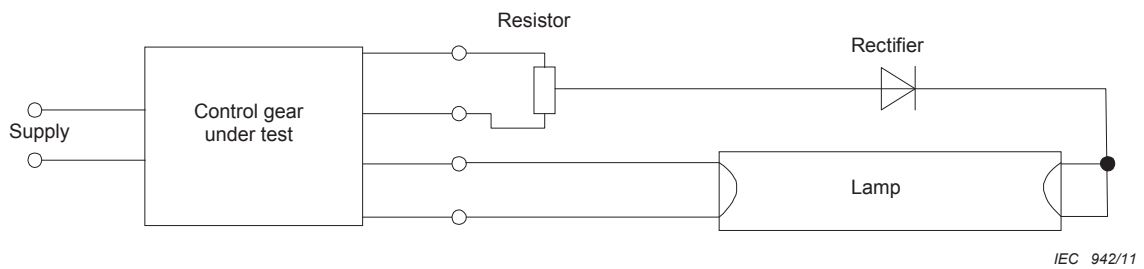


Figure 4b – Testing the opposite direction of the rectifying effect

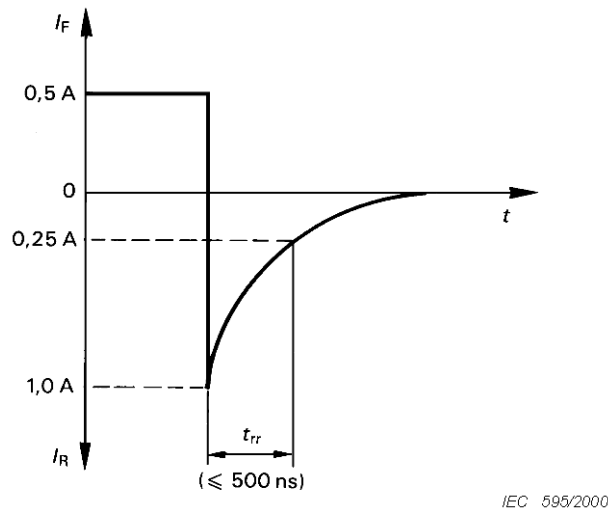


Figure 4c – Recovery time t_{rr} of the diode

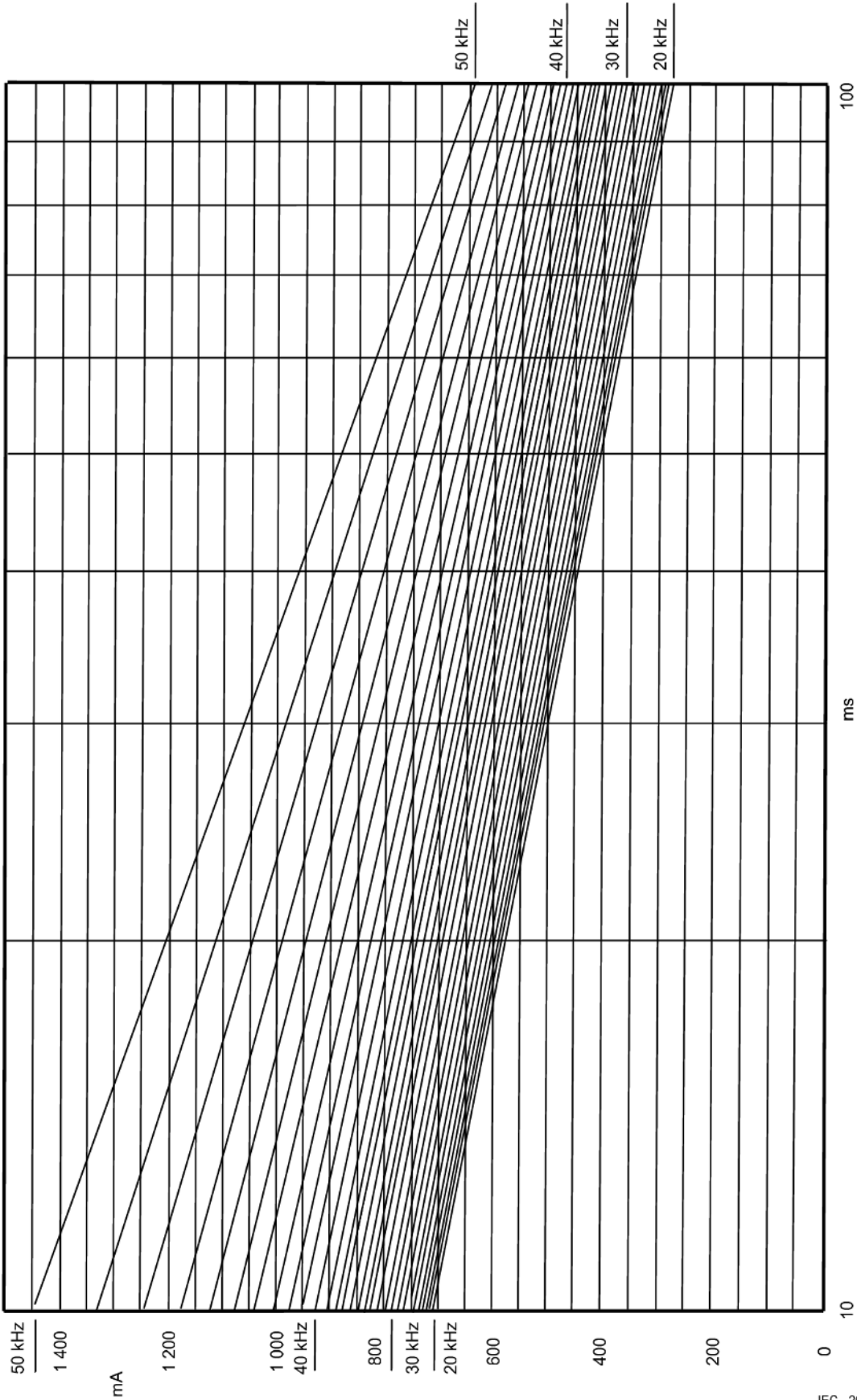
Key to figures 4a, 4b and 4c

The rectifier characteristics shall be:

Peak inverse voltage	U_{RRM}	\geq	3 000 V
Reverse leakage current	I_R	\leq	10 μ A
Forward current	I_F	\geq	three times nominal lamp running current
Reverse recovery time (maximum frequency: 150 kHz)	t_{rr}	\leq	500 ns (measured with $I_F = 0,5$ A and $I_R = 1$ A to $I_R = 0,25$ A)

NOTE The following types of diodes (three diodes in series) are recommended as a suitable rectifier: RGP 30 M, BYM 96 E, BYV 16.

Figure 4 – Circuit for testing rectifying effect



IEC 2624/05

Figure 5a – Limits for capacitive leakage current (in mA_{r.m.s.}) of HF-operated fluorescent lamps – Range 10 ms to 100 ms

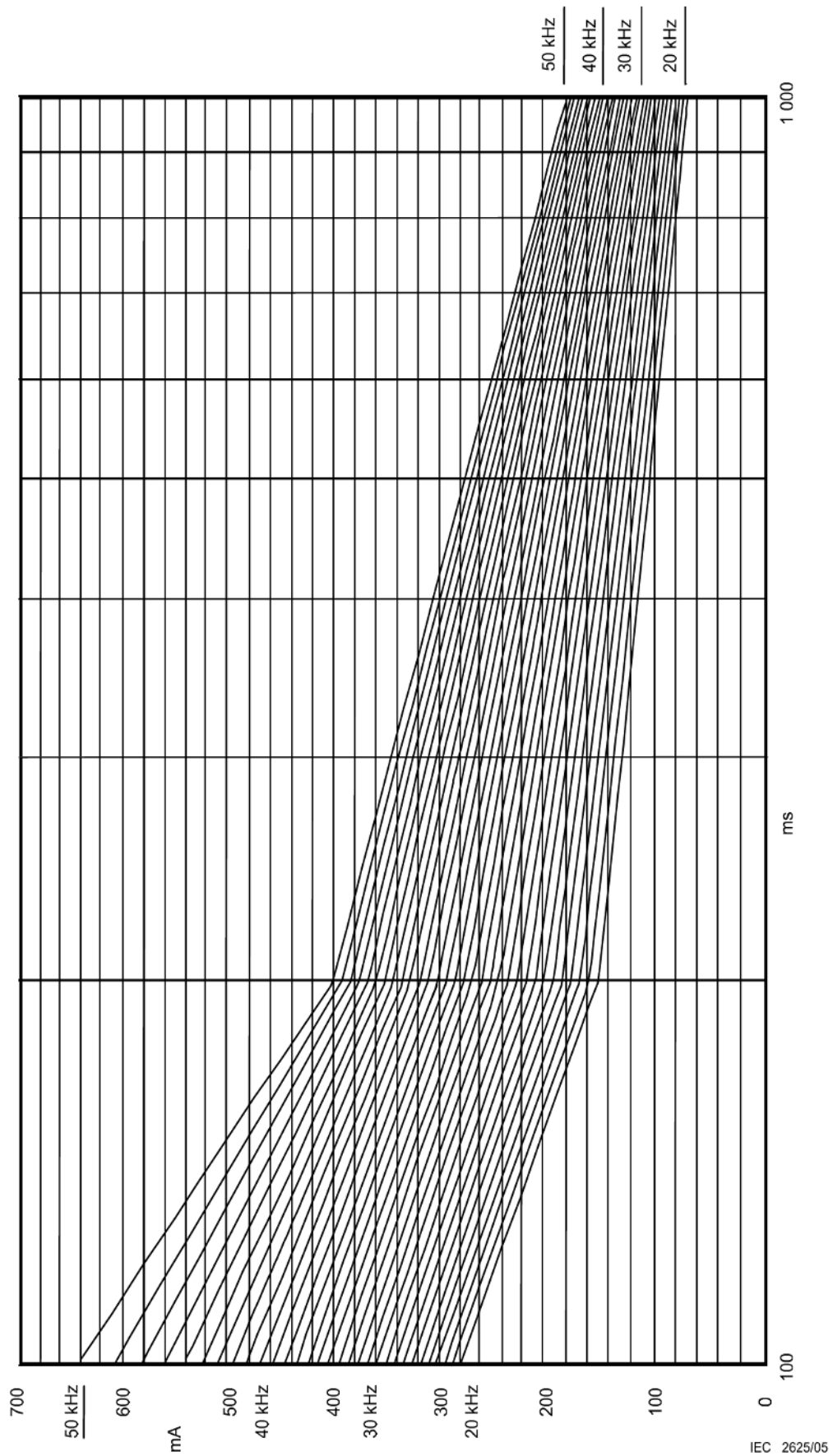
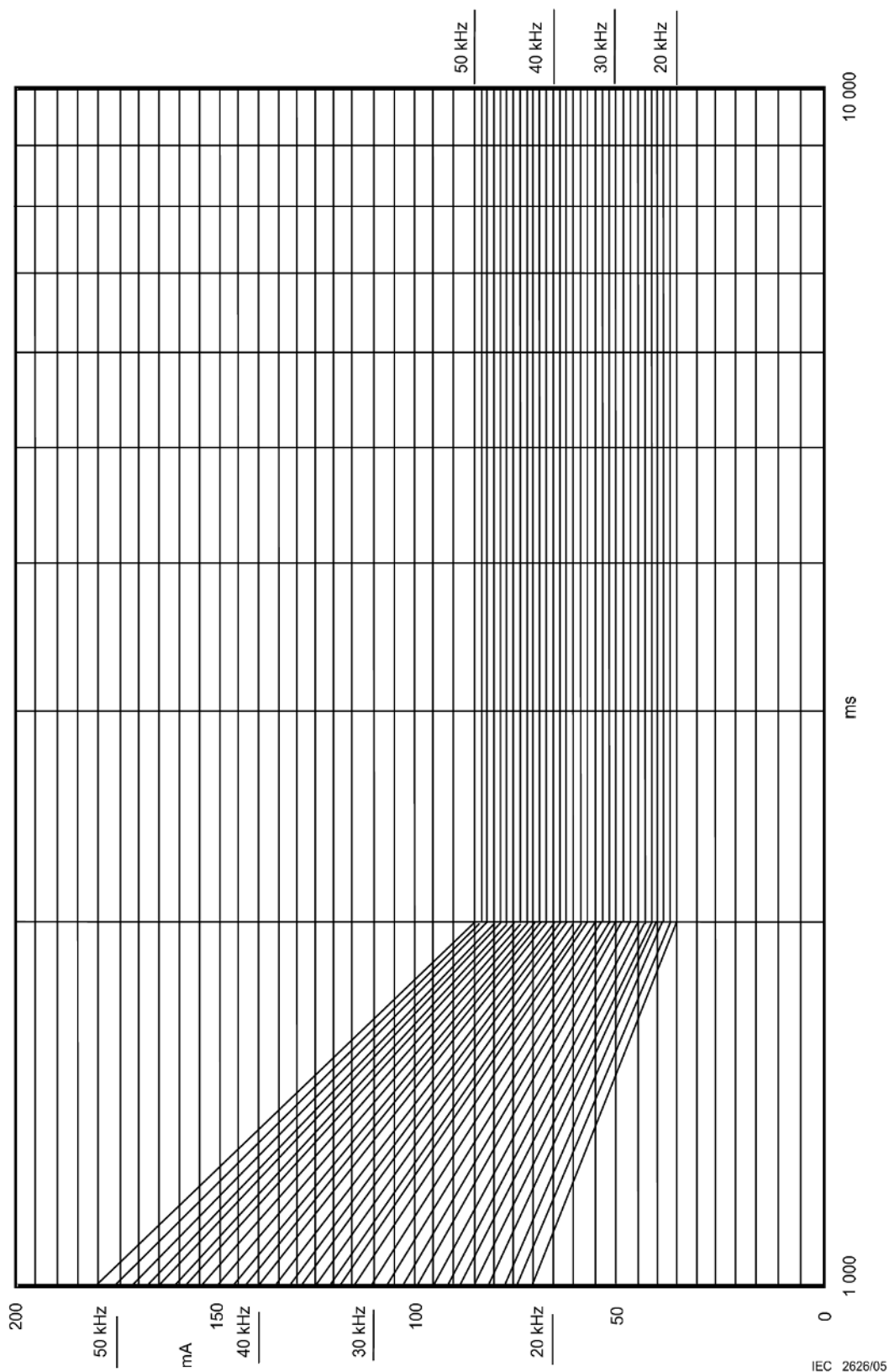


Figure 5b - Limits for capacitive leakage current (in mA_{r.m.s.}) of HF-operated fluorescent lamps - Range 100 ms to 1 000 ms



IEC 2626/05

Figure 5c – Limits for capacitive leakage current (in mA_{r.m.s.}) of HF-operated fluorescent lamps – Range 1 000 ms to 10 000 ms

Figure 5 – Nomographs for the capacitive leakage current limits of HF-operated fluorescent lamps

Annex A
(normative)

**Test to establish whether a conductive part
is a live part which may cause an electric shock**

The requirements of Annex A of IEC 61347-1 apply.

Annex B
(normative)

**Particular requirements for thermally protected
lamp control gear**

The requirements of Annex B of IEC 61347-1 are not applicable.

Annex C
(normative)

**Particular requirements for electronic lamp control gear
with means of protection against overheating**

The requirements of Annex C of IEC 61347-1 apply.

Annex D
(normative)

**Requirements for carrying out the heating tests
of thermally protected lamp control gear**

The requirements of Annex D of IEC 61347-1 apply.

Annex E
(normative)

Use of constant S other than 4 500 in t_w tests

The requirements of Annex E of IEC 61347-1 are not applicable.

Annex F
(normative)

Draught-proof enclosure

The requirements of Annex F of IEC 61347-1 are not applicable.

Annex G
(normative)

Explanation of the derivation of the values of pulse voltages

The requirements of Annex G of IEC 61347-1 are not applicable.

Annex H
(normative)

Tests

The requirements of Annex H of IEC 61347-1 apply.

Annex I (normative)

Measurement of high-frequency leakage current

Electronic control gears are tested for capacitive high-frequency leakage current, as follows.

The ballast is tested in the circuit shown in Figure I.1 with two normal lamps, each being connected to the circuit at only one end ("crossed pair of lamps"). This method would also provide the worst-case leakage to earth.

The glass tube of one of the two lamps, whichever gives the worst value, is wrapped with a 75 mm wide metal foil, together with a non-inductive 2 000 Ω resistor and a measuring device suitable for the test circuit.

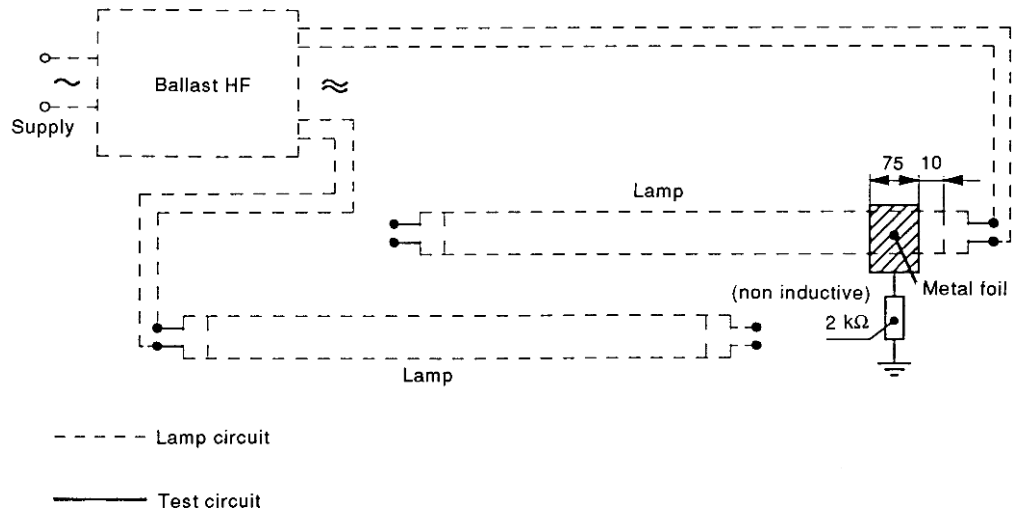
The test shall be conducted with the lamps supported on two 75 mm high wooden blocks and placed on a wooden table, such that no external influence from metallic surfaces is caused.

The leakage current (i.e. the high-frequency current flowing from the metal foil through the 2 000 $\Omega \pm 50 \Omega$ resistor to earth) is measured under the following simulated operating conditions.

- Two normal lamps, each being inserted at only one end into a pair of holders, with the supply voltage switched on.
- In order to take care of the most adverse condition (that is to ensure that the highest leakage current which may occur will be measured) the procedure shall be carried out in such a way that all of the four possible holder contact/cap-pin combinations are covered.
- For control gear with multi-lamp operation, the leakage current from each lamp position is measured separately.
- Where a range of control gear are submitted for test, each ballast type shall be checked, not just the higher or lower power variants.
- Under each of the specified operation conditions, the capacitive leakage current measured shall not exceed the limits specified in Figure 5 (with the time ranges given in 5a, 5b and 5c).

NOTE Leakage currents are derived from IEC 60479-2.

Dimensions in millimeters



IEC 597/2000

Figure I.1a – Test arrangement for bar-shaped tubular fluorescent lamps

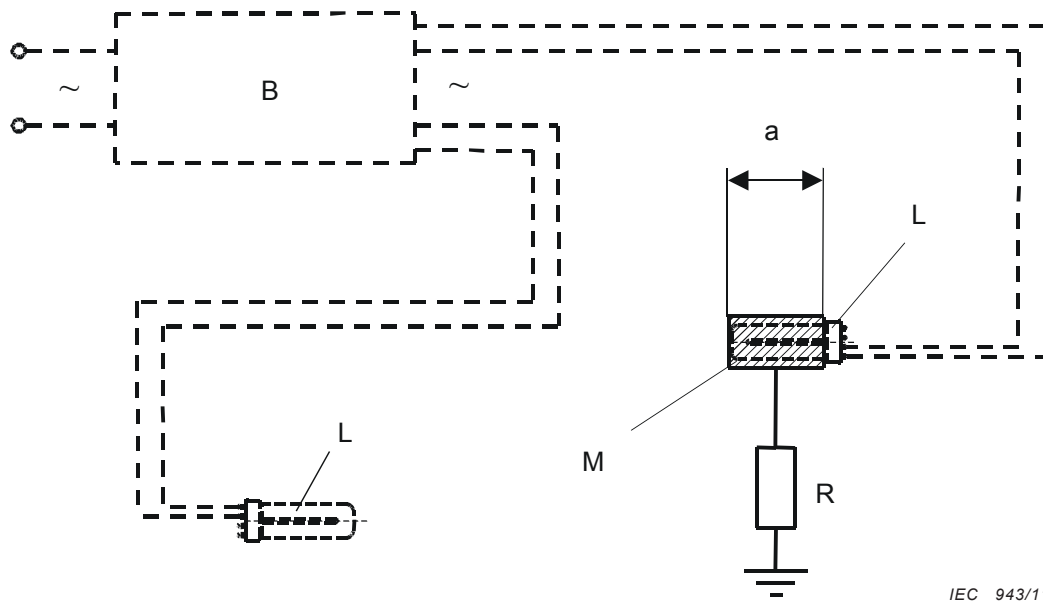


Figure I. 1b – Test arrangement for lamps with ILCOS FSD (H)...

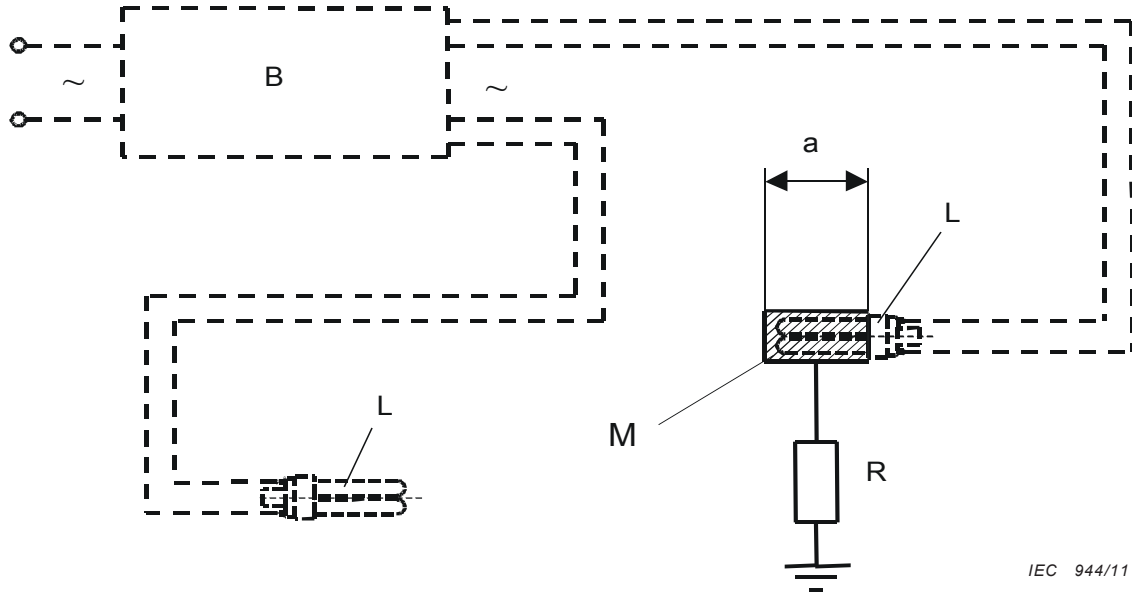


Figure I. 1c- Test arrangement for lamps with ILCOS FSQ...

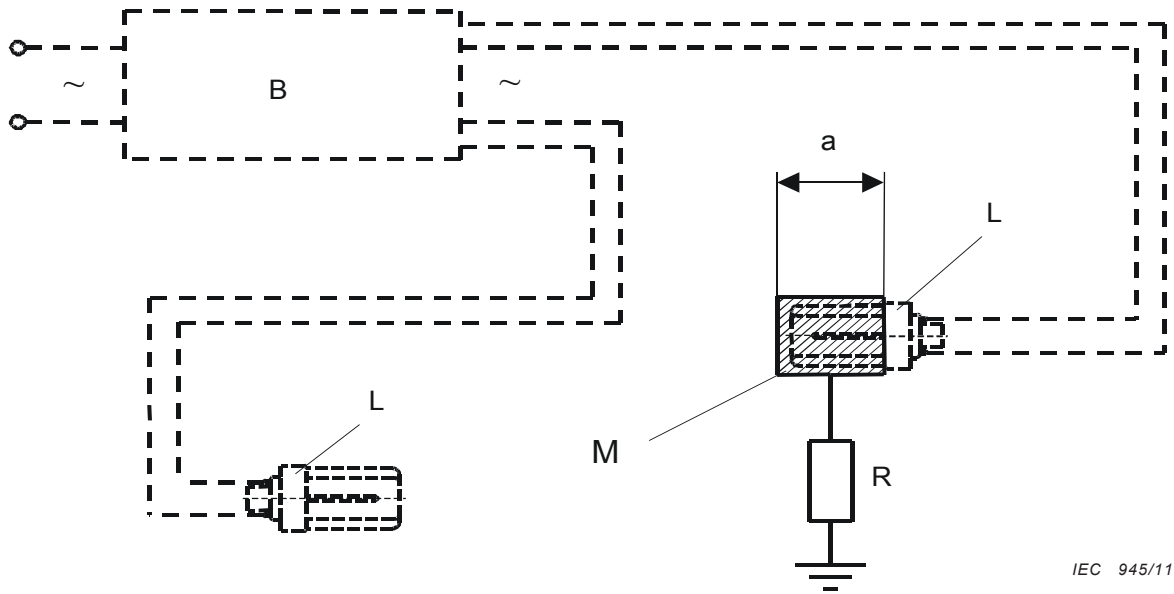


Figure I. 1d - Test arrangement for lamps with ILCOS FSM (H)...

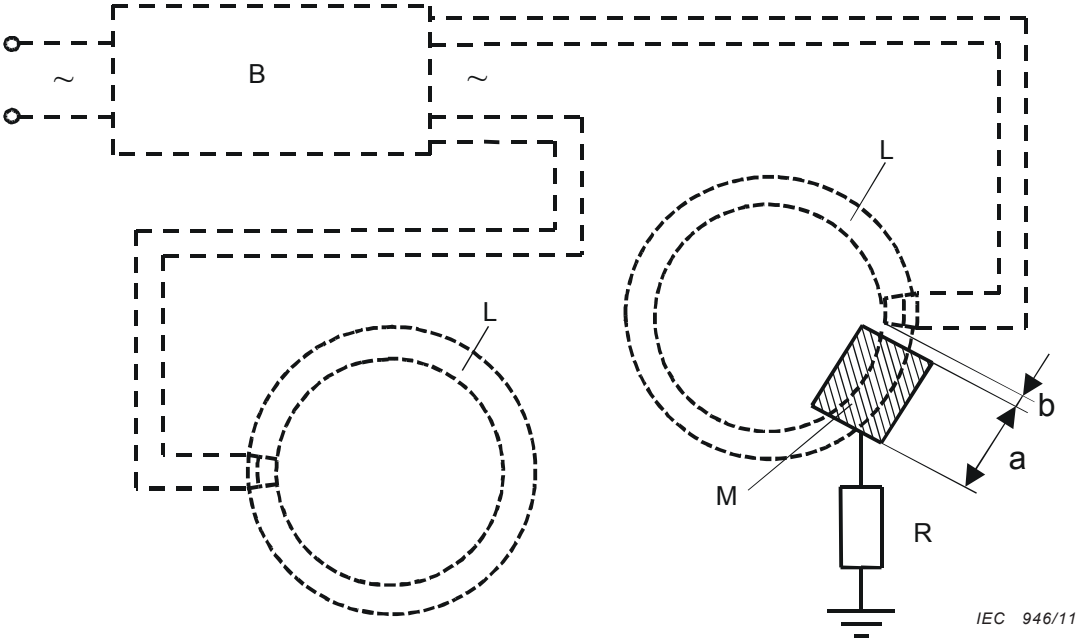


Figure I.1e – Test arrangement for lamps with ILCOS FSC...

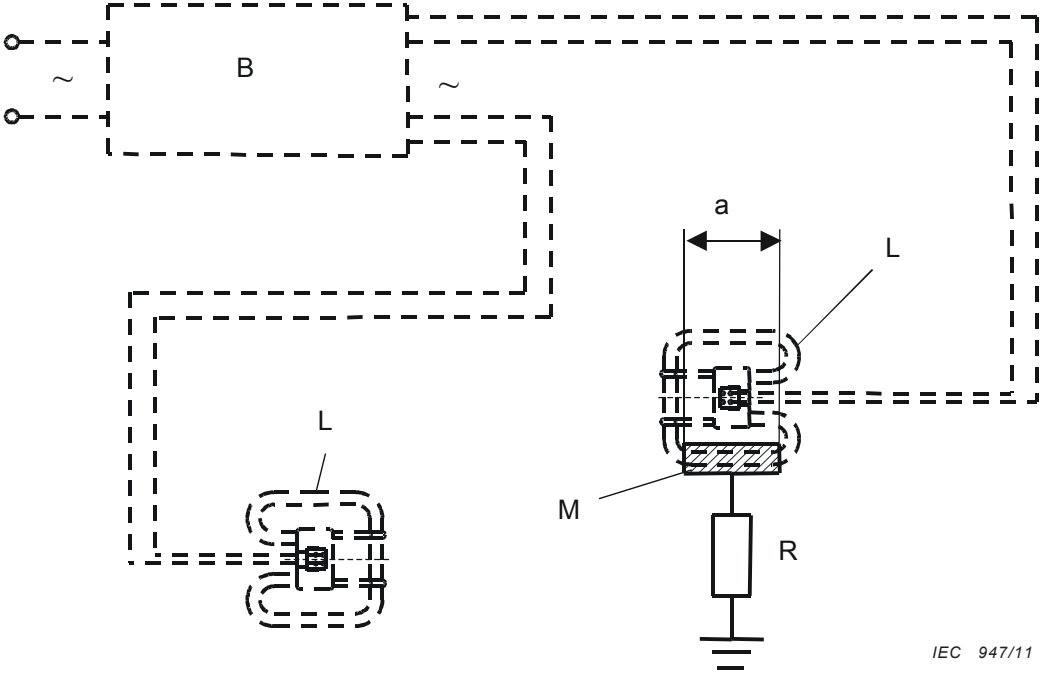


Figure I.1f– Test arrangement for lamps with ILCOS FSS...and GR10q cap

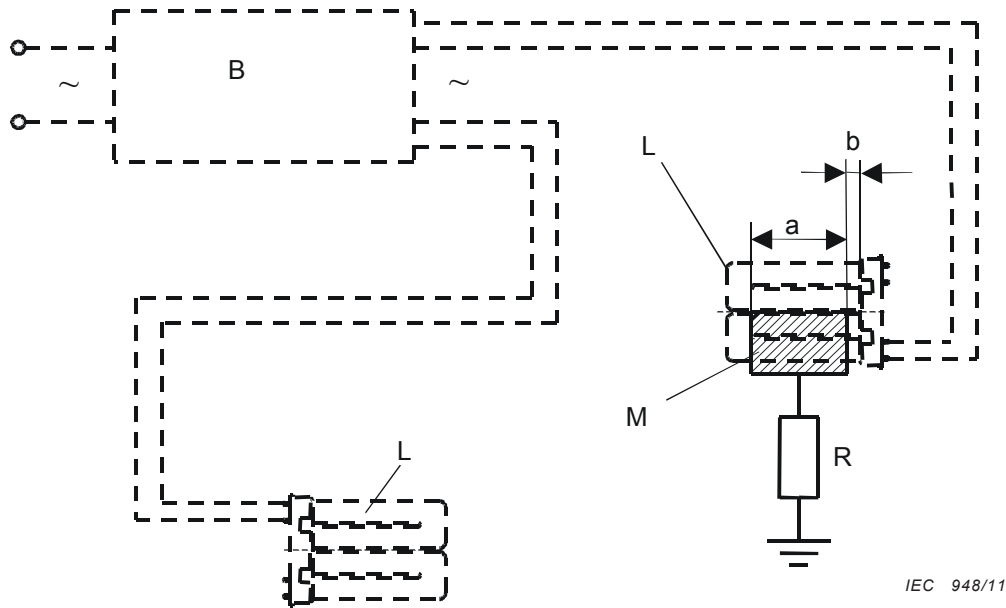


Figure I.1g – Test arrangement for lamps with ILCOS FSS...and 2G10 cap

Key to Figures I.1a to I.1g

- M metal foil
 - L lamp
 - B ballast HF
 - R = 2 kΩ (non inductive)
 - a = length of the metal foil (maximum 75 mm, minimum the length of the lamp)
 - b = 10 mm
- lamp circuit
— test circuit

Figure I.1 – Leakage current test arrangement for various fluorescent lamps

Annex J (normative)

Particular additional safety requirements for a.c., a.c./d.c. or d.c. supplied electronic control gear for emergency lighting

J.1 General

This annex specifies particular safety requirements of a.c., a.c./d.c. or d.c. supplied electronic control gear for emergency lighting purposes intended for connection to a centralised emergency power supply, as, for example, central battery supply system.

It does not apply to electronic control gear used in self-contained emergency lighting luminaires as this is covered by IEC 61347-2-7.

J.2 Terms and definitions

The terms and definitions in Clause 3 apply together with the following.

J.2.1

emergency lighting

lighting provided for use when the supply to the normal lighting fails; it includes escape lighting and standby lighting

J.2.2

rated battery voltage

voltage declared by the battery manufacturer

J.2.3

rated emergency power supply voltage

rated voltage of the emergency power supply claimed by the manufacturer for the information of the installer or user

J.2.4

starting aid

device which facilitates the starting of the lamp

NOTE A conductive strip affixed to the outer surface of the lamp and a conductive plate which is spaced within an appropriate distance from a lamp are examples of starting aids.

J.2.5

ballast lumen factor

ratio of the luminous flux of a reference lamp when the control gear under test is operated at its rated voltage and frequency compared with the luminous flux of the same lamp operated with the appropriate reference ballast supplied at its rated voltage and frequency

J.2.6
emergency ballast lumen factor
EBLF

ratio of the emergency luminous flux of the lamp supplied by the emergency control gear to the luminous flux of the same lamp operated with the appropriate reference ballast at its rated voltage and frequency

The emergency ballast lumen factor is the minimum of the values measured at the appropriate time after failure of the normal supply and continuously.

J.2.7
total circuit power

total power dissipated by ballast and lamp in combination, at rated voltage and frequency of the ballast

J.2.8
preheat starting

type of circuit in which the lamp electrodes are brought to emission temperature before the lamp actually ignites

J.2.9
non-preheat starting

type of circuit which utilizes a high open-circuit voltage causing field emission from electrodes

J.3 Marking

J.3.1 Mandatory markings

Control gear shall, in addition to the requirements of 7.1, be clearly marked with the following mandatory marking:

- a) a.c., a.c./d.c. or d.c. maintained emergency electronic control gear shall be marked with the symbol:



- b) rated emergency power supply voltage and voltage range.

J.3.2 Information to be provided if applicable

In addition to the above mandatory markings and the requirements of 7.2, the following information shall either be given on the control gear or be made available in the manufacturer's catalogue or similar:

- a) a clear indication regarding the type of starting, i.e. preheat or non-preheat;
- b) indication whether a starting aid is needed for the lamp(s);
- c) limits of the ambient temperature range within which an independent control gear will operate satisfactorily at the declared voltage (range);
- d) emergency ballast lumen factor (EBLF).

J.4 General statement

The provisions of Clause 6 of IEC 60929 apply at 90 % and 110 % of the rated emergency power supply voltage.

Furthermore, starting and operation of lamps shall be guaranteed across the widest rated voltage range.

NOTE 1 The electrical characteristics, as given on the lamp data sheets of IEC 60081 and IEC 60901, and applying to operation on a reference ballast at rated voltage with a frequency of 50 Hz or 60 Hz, may deviate when operating on a high-frequency ballast and the conditions of item c) of J.3.2 above.

NOTE 2 A starting aid is only effective when it has an adequate potential difference from one end of the lamp.

J.5 Starting conditions

The provisions of Clause 7 of IEC 60929 apply at 90 % and 110 % of the rated emergency power supply voltage. Where control gear is declared for operation at temperatures lower than 10 °C then the starting condition shall be made at the lowest declared temperature and 90 % of rated voltage.

J.6 Operating conditions

The provisions of Clause 8 of IEC 60929 apply. In addition, tests shall be made with rated d.c. supply voltage.

J.7 Current

At the rated operating voltage, the supply current shall not differ by more than ± 15 % from the declared value when the control gear is operated with a reference lamp.

The supply shall be of low impedance and low inductance.

Compliance is checked by measurement.

J.8 Maximum current in any lead to a cathode

The provisions of Clause 11 of IEC 60929 apply at 90 % and 110 % of the rated emergency power supply voltage.

J.9 Lamp operating current waveform

The provisions of Clause 12 of IEC 60929 apply. In addition, tests shall be made with rated emergency power supply voltage.

J.10 EMC immunity

For emergency supplied electronic control gear, the requirements of IEC 61547 apply.

J.11 Pulse voltage from central battery systems

The d.c. supplied emergency control gear shall withstand, without failure, any pulses caused by switching other equipment in the same circuit.

Compliance is checked by operating the ballast at the maximum voltage of the rated voltage range in association with the appropriate number of lamps and in an ambient temperature of 25 °C. The control gear shall withstand, without failure, the number of pulse voltages given in Table J.1 superimposed, with the same polarity, on the supply voltage.

Table J.1 – Pulse voltages

Number of voltage pulses	Pulse voltage		Period between each pulse
	Peak value V	Pulse width at half peak ms	
3	Equal to design voltage	10	2
NOTE A suitable measuring circuit is shown in Figure G.2 of IEC 61347-1.			

J.12 Tests for abnormal conditions

The provisions of Clause 14 of IEC 60929 apply.

J.13 Temperature cycling test and endurance test

The provisions of Clause 26 of IEC 61347-2-7 apply.

J.14 Functional safety (EBLF)

The appropriate lamp associated to the control gear shall provide the necessary light output after change over to the emergency mode. This is verified if the declared emergency ballast lumen factor (EBLF) is achieved during emergency operation at 25 °C.

Compliance is checked by the following test:

Measurement of EBLF shall be made at 25 °C, using a lamp which has been aged for at least 100 h of the appropriate type and having not been lit for 24 h. The first measurement is made at maximum power supply voltage range after 5 s and 60 s and then in steady conditions at minimum power supply voltage range.

The lowest value of the values measured at 60 s with maximum power supply voltage or in steady conditions at minimum power supply voltage shall be retained and compared with the one measured with the same lamp operating by the appropriate reference ballast. The ratio shall reach at least the declared EBLF.

The value measured at 5 s at maximum power supply voltage shall reach at least 50 % of declared EBLF.

NOTE 1 Replace 60 s by 0,5 s for ballasts declared for use in luminaires for high-risk task area lighting.

NOTE 2 Other methods may apply for determining EBLF, in particular methods which record permanently the luminous flux of the lamp associated to the ballast under test.

Annex K (informative)

Components used in the asymmetric pulse test circuit (see Figure 1)

Table K.1 – Material specification

Reference designation	Description
U1	555 timer ic
T1	1:1 transformer
D1, D2	Ultra fast recovery diode, 1 000 V, 1 A, 75 ns
D3, D4	Signal diode 75 V 200 mA
D5...D8	200 V Zener diode
Q1	Mosfet 900 V 6 A
R1A to R1C	Resistor 5 k Ω 25 W 1 %
R2A and B	Resistor 500 Ω 30 W 1 %
S1, S3, S4	Switch
S2	Switch – double
Battery	Battery 9 V
C1, C2, C3	Capacitor 0,1 μ F 50 V 5 %
R3	Resistor 30 Ω ¼ W 5 %
R4	Resistor 365 k Ω ¼ W 1 %
R5	Resistor 41,2 k Ω ¼ W 1 %
R6	Resistor 44,2 k Ω ¼ W 1 %

Table K.2 – Transformer specification

Component	Description
Core	Two EI187 (E19/8/5), Core area 22,6 mm ² , P material or equivalent
Bobbin	8-pin, horizontal mount
Primary winding	38 turns #26 AWG HN, 19 turns/layer. Start pin 5, finish pin 7
Inter-winding insulation	5 layers 3M #56 3/8" or equivalent
Secondary winding	38 turns #26 AWG HN, 19 turns/layer. Start pin 4, finish pin 1
Wrapper	2 layers 3M #56 3/8" or equivalent
Inter-winding capacitance	Approximately 22 pF
HIPOT	2 500 V _{rms}

Annex L
(normative)

Information for control gear design
(from Annex E of IEC 61195)

L.1 Guideline for safe lamp operation

To ensure safe lamp operation, it is essential to observe Clause L.2

L.2 Limitation of working voltage

For G5-capped lamps with diameter 16 mm, the working voltage between any lamp terminal and earth shall not exceed 430 V r.m.s.

Bibliography

IEC/TS 60479-2, *Effects of currents on human beings and livestock – Part 2: Special aspects*

IEC 60598-2-22, *Luminaires – Part 2-22: Particular requirements – Luminaires for emergency lighting*

IEC 61195, *Double-capped fluorescent lamps – Safety specifications*

IEC 61199, *Single-capped fluorescent lamps – Safety specifications*

INTERNATIONAL
ELECTROTECHNICAL
COMMISSION

3, rue de Varembé
PO Box 131
CH-1211 Geneva 20
Switzerland

Tel: + 41 22 919 02 11
Fax: + 41 22 919 03 00
info@iec.ch
www.iec.ch

British Standards Institution (BSI)

BSI is the national body responsible for preparing British Standards and other standards-related publications, information and services.

BSI is incorporated by Royal Charter. British Standards and other standardization products are published by BSI Standards Limited.

About us

We bring together business, industry, government, consumers, innovators and others to shape their combined experience and expertise into standards-based solutions.

The knowledge embodied in our standards has been carefully assembled in a dependable format and refined through our open consultation process. Organizations of all sizes and across all sectors choose standards to help them achieve their goals.

Information on standards

We can provide you with the knowledge that your organization needs to succeed. Find out more about British Standards by visiting our website at bsigroup.com/standards or contacting our Customer Services team or Knowledge Centre.

Buying standards

You can buy and download PDF versions of BSI publications, including British and adopted European and international standards, through our website at bsigroup.com/shop, where hard copies can also be purchased.

If you need international and foreign standards from other Standards Development Organizations, hard copies can be ordered from our Customer Services team.

Subscriptions

Our range of subscription services are designed to make using standards easier for you. For further information on our subscription products go to bsigroup.com/subscriptions.

With **British Standards Online (BSOL)** you'll have instant access to over 55,000 British and adopted European and international standards from your desktop. It's available 24/7 and is refreshed daily so you'll always be up to date.

You can keep in touch with standards developments and receive substantial discounts on the purchase price of standards, both in single copy and subscription format, by becoming a **BSI Subscribing Member**.

PLUS is an updating service exclusive to BSI Subscribing Members. You will automatically receive the latest hard copy of your standards when they're revised or replaced.

To find out more about becoming a BSI Subscribing Member and the benefits of membership, please visit bsigroup.com/shop.

With a **Multi-User Network Licence (MUNL)** you are able to host standards publications on your intranet. Licences can cover as few or as many users as you wish. With updates supplied as soon as they're available, you can be sure your documentation is current. For further information, email bsmusales@bsigroup.com.

BSI Group Headquarters

389 Chiswick High Road London W4 4AL UK

Revisions

Our British Standards and other publications are updated by amendment or revision.

We continually improve the quality of our products and services to benefit your business. If you find an inaccuracy or ambiguity within a British Standard or other BSI publication please inform the Knowledge Centre.

Copyright

All the data, software and documentation set out in all British Standards and other BSI publications are the property of and copyrighted by BSI, or some person or entity that owns copyright in the information used (such as the international standardization bodies) and has formally licensed such information to BSI for commercial publication and use. Except as permitted under the Copyright, Designs and Patents Act 1988 no extract may be reproduced, stored in a retrieval system or transmitted in any form or by any means – electronic, photocopying, recording or otherwise – without prior written permission from BSI. Details and advice can be obtained from the Copyright & Licensing Department.

Useful Contacts:

Customer Services

Tel: +44 845 086 9001

Email (orders): orders@bsigroup.com

Email (enquiries): cservices@bsigroup.com

Subscriptions

Tel: +44 845 086 9001

Email: subscriptions@bsigroup.com

Knowledge Centre

Tel: +44 20 8996 7004

Email: knowledgecentre@bsigroup.com

Copyright & Licensing

Tel: +44 20 8996 7070

Email: copyright@bsigroup.com



...making excellence a habit.™