

# Household and similar electrical appliances – Safety –

## Part 2-21: Particular requirements for storage water heaters

ICS 91.140.65

## National foreword

This British Standard is the UK implementation of EN 60335-2-21:2003+A2:2008, incorporating corrigenda October 2007 and October 2010. It is identical to IEC 60335-2-21:2002, incorporating amendments 1:2004 and 2:2008 and corrigendum March 2007. It supersedes BS EN 60335-2-21:2003+A1:2005 which is withdrawn.

The start and finish of text introduced or altered by amendment is indicated in the text by tags. Tags indicating changes to IEC text carry the number of the IEC amendment. For example, text altered by IEC amendment 1 is indicated by  $\text{A}_1$   $\text{A}_1$ .

The UK participation in its preparation was entrusted by Technical Committee CPL/61, Safety of household and similar electrical appliances, to Subcommittee CPL/61/7, Safety of electrical appliances - Heated appliance group.

A list of organizations represented on this subcommittee can be obtained on request to its secretary.

This publication does not purport to include all the necessary provisions of a contract. Users are responsible for its correct application.

**Compliance with a British Standard cannot confer immunity from legal obligations.**

### Amendments/corrigenda issued since publication

Amd. No.	Date	Comments
15609	24 May 2005	See national foreword
17192 Corrigendum No. 1	29 June 2007	Changes to <b>3.103</b> Note 1 and <b>3.105</b> Note 1
17503 Corrigendum No. 2	31 January 2008	In the EN foreword the paragraph following Note 2 has been replaced
	30 April 2009	Implementation of IEC amendment 2:2008 with CENELEC endorsement A2:2008
	31 May 2014	Implementation of CENELEC corrigendum October 2010: clause 22.102 added to Annex ZA

This British Standard, was published under the authority of the Standards Policy and Strategy Committee on 14 April 2003

© The British Standards Institution 2014.  
Published by BSI Standards Limited 2014

EUROPEAN STANDARD

**EN 60335-2-21:2003+A2**

NORME EUROPÉENNE

EUROPÄISCHE NORM

November 2008

ICS 91.140.65; 13.120

Incorporating corrigenda October 2007 and October 2010

English version

**Household and similar electrical appliances -  
Safety**  
**Part 2-21: Particular requirements for storage water heaters**  
(IEC 60335-2-21:2002)

Appareils électrodomestiques  
et analogues -  
Sécurité  
Partie 2-21: Règles particulières  
pour les chauffe-eau à accumulation  
(CEI 60335-2-21:2002)

Sicherheit elektrischer Geräte für den  
Hausgebrauch und ähnliche Zwecke  
Teil 2-21: Besondere Anforderungen für  
Wassererwärmer (Warmwasserspeicher und  
Warmwasserboiler)  
(IEC 60335-2-21:2002)

This European Standard was approved by CENELEC on 2003-03-01. CENELEC members are bound to comply with the CEN/CENELEC Internal Regulations which stipulate the conditions for giving this European Standard the status of a national standard without any alteration.

Up-to-date lists and bibliographical references concerning such national standards may be obtained on application to the Central Secretariat or to any CENELEC member.

This European Standard exists in three official versions (English, French, German). A version in any other language made by translation under the responsibility of a CENELEC member into its own language and notified to the Central Secretariat has the same status as the official versions.

CENELEC members are the national electrotechnical committees of Austria, Belgium, Cyprus, Czech Republic, Denmark, Estonia, Finland, France, Germany, Greece, Hungary, Iceland, Ireland, Italy, Latvia, Lithuania, Luxembourg, Malta, Netherlands, Norway, Poland, Portugal, Slovakia, Slovenia, Spain, Sweden, Switzerland and United Kingdom.

**CENELEC**

European Committee for Electrotechnical Standardization  
Comité Européen de Normalisation Electrotechnique  
Europäisches Komitee für Elektrotechnische Normung

**Central Secretariat: rue de Stassart 35, B - 1050 Brussels**

## Foreword

The text of document 61/2135/FDIS, future fifth edition of IEC 60335-2-21, prepared by the IEC Technical Committee 61, was submitted to the IEC-CENELEC parallel vote.

As a result of the Kista meeting of CENELEC TC 61 in May 2002, a draft amendment prAA containing the relevant existing common modifications was submitted to the formal vote.

The texts of the FDIS and the prAA were approved by CENELEC as a new edition of EN 60335-2-21 on 2003-03-01.

This European Standard replaces EN 60335-2-21:1999 + A1:2000 + A11:2002 + A12:2002.

The following dates are applicable:

- latest date by which the EN has to be implemented  
at national level by publication of an identical  
national standard or by endorsement (dop) 2004-03-01
- date on which national standards  
conflicting with the EN have to be withdrawn (dow) 2006-03-01

This part 2 has to be used in conjunction with EN 60335-1, Household and similar electrical appliances – Safety – Part 1: General requirements. It was established on the basis of the 2002 edition of that standard. Amendments and revisions of Part 1 have also to be taken into account and the dates when such changes become applicable will be stated in the relevant amendment or revision of Part 1.

This part 2 supplements or modifies the corresponding clauses of EN 60335-1, so as to convert it into the European Standard: Safety requirements for electric storage water heaters.

When a particular subclause of Part 1 is not mentioned in this part 2, that subclause applies as far as is reasonable. When this standard states "addition", "modification" or "replacement", the relevant text of Part 1 is to be adapted accordingly.

NOTE 1 The following numbering system is used:

- subclauses, tables and figures that are numbered starting from 101 are additional to those in Part 1;
- unless notes are in a new subclause or involve notes in Part 1, they are numbered starting from 101, including those in a replaced clause or subclause;
- additional annexes are lettered AA, BB, etc.;
- subclauses, notes and annexes that are additional to those in the IEC standard are prefixed with the letter Z.

NOTE 2 The following print types are used:

- requirements: in roman type;
- *test specifications: in italic type;*
- notes: in small roman type.

Words in **bold** in the text are defined in Clause 3. When a definition concerns an adjective, the adjective and the associated noun are also in bold.

Special national conditions causing a deviation from this European Standard are listed in Annex ZA and are in addition to those in EN 60335-1.

National deviations from this European Standard are listed in Annex ZB and are in addition to those in EN 60335-1.

---

## Introduction

An investigation by CENELEC TC 61 has shown that all risks from products within the scope of this standard are fully covered by the Low Voltage Directive, 73/23/EEC. For products having mechanical moving parts, a risk assessment in accordance with the Machinery Directive, 98/37/EC, has shown that the risks are mainly of electrical origin and consequently this directive is not applicable. However, the relevant essential safety requirements of the Machinery Directive are covered by this standard together with the principal objectives of the Low Voltage Directive.

---

## Endorsement notice

The text of the International Standard IEC 60335-2-21:2002 was approved by CENELEC as a European Standard with agreed common modifications.

## Foreword to amendment A1

The text of document 61/2683/FDIS, future amendment 1 to IEC 60335-2-21:2002, prepared by the IEC Technical Committee 61, Safety of household and similar electrical appliances, was submitted to the IEC-CENELEC parallel vote and was approved by CENELEC as amendment A1 to EN 60335-2-21:2003 on 2004-11-01.

The following dates are applicable:

- latest date by which the amendment has to be implemented at national level by publication of an identical national standard or by endorsement (dop) 2005-08-01
- date on which national standards conflicting with the amendment have to be withdrawn (dow) 2007-11-01

This amendment supplements or modifies the corresponding clauses of EN 60335-2-21:2003.

As a consequence of endorsing amendment 1:2004 to IEC 60335-2-21:2002, the common modifications in EN 60335-2-21:2003 concerning Subclauses 24.102 and 24.102.2 are replaced by IEC text and therefore withdrawn.

Additional special national conditions are listed in Annex ZA.

There are no national deviations from this amendment.

---

## Endorsement notice

The text of amendment 1:2004 to the International Standard IEC 60335-2-21:2002 was approved by CENELEC as an amendment to the European Standard without any modification.

## Foreword to amendment A2

The text of document 61/3678/FDIS, future amendment 2 to IEC 60335-2-21:2002, prepared by IEC Technical Committee 61, Safety of household and similar electrical appliances, was submitted to the IEC-CENELEC parallel vote and was approved by CENELEC as amendment A2 to EN 60335-2-21:2003 on 2008-10-01.

The following dates are applicable:

- latest date by which the amendment has to be implemented at national level by publication of an identical national standard or by endorsement (dop) 2009-07-01
- date on which national standards conflicting with the amendment have to be withdrawn (dow) 2013-10-01

This amendment supplements or modifies the corresponding clauses of EN 60335-2-21:2003.

There are no special national conditions causing a deviation from this amendment.

There are no national deviations from this amendment.

---

## Endorsement notice

The text of amendment 2:2008 to the International Standard IEC 60335-2-21:2002 was approved by CENELEC as an amendment to the European Standard without any modification.

In the Bibliography, add the following note to the standard mentioned:

ISO 13732-1                      NOTE Harmonized as EN ISO 13732-1:2006 (not modified)

---

## CONTENTS

INTRODUCTION.....	6
1 Scope.....	7
2 Normative references .....	7
3 Definitions .....	7
4 General requirement.....	9
5 General conditions for the tests .....	9
6 Classification.....	9
7 Marking and instructions.....	9
8 Protection against access to live parts.....	10
9 Starting of motor-operated appliances .....	10
10 Power input and current .....	10
11 Heating .....	11
12 Void .....	11
13 Leakage current and electric strength at operating temperature.....	11
14 Transient overvoltages .....	11
15 Moisture resistance .....	11
16 Leakage current and electric strength.....	11
17 Overload protection of transformers and associated circuits .....	11
18 Endurance.....	11
19 Abnormal operation .....	11
20 Stability and mechanical hazards .....	12
21 Mechanical strength .....	13
22 Construction.....	13
23 Internal wiring.....	15
24 Components .....	16
25 Supply connection and external flexible cords .....	17
26 Terminals for external conductors.....	17
27 Provision for earthing .....	17
28 Screws and connections.....	17
29 Clearances, creepage distances and solid insulation .....	17
30 Resistance to heat and fire.....	17
31 Resistance to rusting.....	17
32 Radiation, toxicity and similar hazards.....	17
Annexes .....	20
Annex ZA (normative) Special national conditions .....	22
Annex ZB (informative) A-deviations .....	22
Bibliography.....	21
Figure 101 – Examples of types of storage water heaters .....	18
Figure 102 – Examples of positions of the thermocouples.....	19

## INTRODUCTION

It has been assumed in the drafting of this International Standard that the execution of its provisions is entrusted to appropriately qualified and experienced persons.

This standard recognizes the internationally accepted level of protection against hazards such as electrical, mechanical, thermal, fire and radiation of appliances when operated as in normal use taking into account the manufacturer's instructions. It also covers abnormal situations that can be expected in practice and takes into account the way in which electromagnetic phenomena can affect the safe operation of appliances.

This standard takes into account the requirements of IEC 60364 as far as possible so that there is compatibility with the wiring rules when the appliance is connected to the supply mains. However, national wiring rules may differ.

If an appliance within the scope of this standard also incorporates functions that are covered by another part 2 of IEC 60335, the relevant part 2 is applied to each function separately, as far as is reasonable. If applicable, the influence of one function on the other is taken into account.

When a part 2 standard does not include additional requirements to cover hazards dealt with in Part 1, Part 1 applies.

NOTE 1 This means that the technical committees responsible for the part 2 standards have determined that it is not necessary to specify particular requirements for the appliance in question over and above the general requirements.

This standard is a product family standard dealing with the safety of appliances and takes precedence over horizontal and generic standards covering the same subject.

NOTE 2 Horizontal and generic standards covering a hazard are not applicable since they have been taken into consideration when developing the general and particular requirements for the IEC 60335 series of standards. For example, in the case of temperature requirements for surfaces on many appliances, generic standards, such as ISO 13732-1 for hot surfaces, are not applicable in addition to Part 1 or part 2 standards.

An appliance that complies with the text of this standard will not necessarily be considered to comply with the safety principles of the standard if, when examined and tested, it is found to have other features that impair the level of safety covered by these requirements.

An appliance employing materials or having forms of construction differing from those detailed in the requirements of this standard may be examined and tested according to the intent of the requirements and, if found to be substantially equivalent, may be considered to comply with the standard.



# HOUSEHOLD AND SIMILAR ELECTRICAL APPLIANCES ± SAFETY ±

## Part 2-21: Particular requirements for storage water heaters

### 1 Scope

This clause of Part 1 is replaced by the following.

This International Standard deals with the safety of electric **storage water heaters** for household and similar purposes and intended for heating water below boiling temperature, their **rated voltage** being not more than 250 V for single-phase appliances and 480 V for other appliances.

Appliances not intended for normal household use but which nevertheless may be a source of danger to the public, such as appliances intended to be used by laymen in shops, in light industry and on farms, are within the scope of this standard.

As far as is practicable, this standard deals with the common hazards presented by appliances that are encountered by all persons in and around the home. However, in general, it does not take into account

- Ⓐ<sub>2</sub> – persons (including children) whose
- physical, sensory or mental capabilities; or
  - lack of experience and knowledge
- prevents them from using the appliance safely without supervision or instruction;
- children playing with the appliance.

Ⓐ<sub>2</sub>

NOTE 101 Attention is drawn to the fact that

- for appliances intended to be used at high altitudes, additional requirements may be necessary;
- for appliances intended to be used in vehicles or on board ships or aircraft, additional requirements may be necessary;
- in many countries additional requirements are specified by the national health authorities, the national authorities responsible for the protection of labour and similar authorities;
- in many countries regulations exist for the installation of equipment connected to the water mains.

NOTE 102 This standard does not apply to

- appliances for boiling water (IEC 60335-2-15);
- instantaneous water heaters (IEC 60335-2-35);
- commercial dispensing appliances and vending machines (IEC 60335-2-75);
- appliances intended exclusively for industrial purposes;
- appliances intended to be used in locations where special conditions prevail, such as the presence of a corrosive or explosive atmosphere (dust, vapour or gas).

### 2 Normative references

This clause of Part 1 is applicable.

### 3 Definitions

This clause of Part 1 is applicable except as follows.

### 3.1.9 *Replacement:*

#### **normal operation**

operation of the appliance after installation in accordance with the instructions and filled with cold water

### 3.101

#### **storage water heater**

**stationary appliance** for heating and storing water in a container and incorporating devices to control the water temperature

### 3.102

#### **closed water heater**

unvented **storage water heater** intended to operate at the pressure of the water system, the flow of water being controlled by one or more valves in the outlet system

NOTE 1 A **closed water heater** is shown in Figure 101a.

NOTE 2 The operating pressure may be the output pressure of a reducing or boosting device.

### 3.103

#### **cistern-fed water heater**

**storage water heater** that is vented to atmosphere and intended to be supplied by water under gravity from a separate cistern, the flow of water being controlled by one or more valves in the outlet system

NOTE 1 A **cistern-fed water heater** is shown in Figure 101d.

NOTE 2 The water heater may be installed so that the expanded water returns to the cistern.

NOTE 3 In a **cistern-fed water heater**, the pressure in the container results from the column of water in the cistern.

### 3.104

#### **cistern-type water heater**

**storage water heater** having a container supplied by water under gravity from a cistern incorporated in the appliance. The expanded water can return to the cistern, the flow of water being controlled by one or more valves in the outlet system

NOTE 1 A **cistern-type water heater** is shown in Figure 101c.

NOTE 2 In a **cistern-type water heater**, the surface of the water is always at atmospheric pressure.

### 3.105

#### **open-outlet water heater**

**storage water heater** in which the flow of water is only controlled by a valve in the inlet pipe and in which the expanded or displaced water flows through the outlet

NOTE 1 A **open-outlet water heater** is shown in Figure 101b.

NOTE 2 In an **open-outlet water heater**, the static pressure at the outlet is always at atmospheric pressure.

### 3.106

#### **low-pressure water heater**

**storage water heater** that is vented to atmosphere and intended to be connected to the water mains through a pressure reducing valve, the flow of water being controlled by one or more valves in the outlet system

NOTE A **low-pressure water heater** is shown in Figure 101e.

### 3.107

#### **rated pressure**

water pressure assigned to the appliance by the manufacturer

## 4 General requirement

This clause of Part 1 is applicable.

## 5 General conditions for the tests

This clause of Part 1 is applicable except as follows.

### 5.2 Addition:

NOTE 101 Additional appliances may be required if damage occurs during the tests of 19.2 or 19.3.

### 5.3 Addition:

*When the tests are carried out on a single appliance, the tests of 22.102, 22.103, 22.112 and 24.102 are carried out before the tests of Clause 19.*

## 6 Classification

This clause of Part 1 is applicable except as follows.

### 6.1 Modification:

Water heaters shall be **class I**, **class II** or **class III**.

### 6.2 Addition:

Water heaters for installation outdoors shall be at least IPX4. Other water heaters shall be at least IPX1.

## 7 Marking and instructions

This clause of Part 1 is applicable except as follows.

### 7.1 Addition:

Appliances, other than **cistern-type water heaters**, shall be marked with the **rated pressure** in pascals.

Appliances shall be marked with the rated capacity in litres.

**Closed water heaters** shall be marked with a statement that a pressure-relief device is to be fitted in the installation, unless it is incorporated in the appliance.

**Closed water heaters** having a **rated pressure** less than 0,6 MPa and **low-pressure water heaters** shall be marked with a statement that a pressure reducing valve is to be fitted in the installation.

**Open-outlet water heaters** shall be marked, close to the outlet connection or on a tag attached to the appliance, with the substance of the following:

WARNING: This outlet acts as a vent and must only be connected to a fitting recommended by the manufacturer. It must not be connected to a tap.

**7.12 Addition:**

The instructions for **closed water heaters** shall state the substance of the following:

- the water may drip from the discharge pipe of the pressure-relief device and that this pipe must be left open to the atmosphere;
- the pressure-relief device is to be operated regularly to remove lime deposits and to verify that it is not blocked;
- how the water heater can be drained.

**7.12.1 Addition:**

The installation instructions shall state the substance of the following:

- the type or characteristics of the pressure-relief device and how to connect it, unless it is incorporated in the appliance;
- a discharge pipe connected to the pressure-relief device is to be installed in a continuously downward direction and in a frost-free environment;
- the type or characteristics of a pressure reducing valve and the installation details (for appliances having a **rated pressure** less than 0,6 MPa).

The instructions for **closed water heaters** incorporating a heat exchanger shall give details on the installation of control devices and the temperature settings that are necessary to prevent operation of the **thermal cut-out** caused by the heat from the exchanger.

The instructions for **cistern-fed water heaters** and **low-pressure water heaters** shall contain the substance of the following:

WARNING: Do not connect any pressure-relief device to the vent pipe of this water heater.

**7.101** The water inlet and the water outlet shall be identified. This identification shall not be on **detachable parts**. If colours are used, blue shall be used for the inlet and red for the outlet.

NOTE Identification may be by means of arrows showing the direction of the water flow.

*Compliance is checked by inspection.*

## **8 Protection against access to live parts**

This clause of Part 1 is applicable.

## **9 Starting of motor-operated appliances**

This clause of Part 1 is not applicable.

## **10 Power input and current**

This clause of Part 1 is applicable.

## 11 Heating

This clause of Part 1 is applicable except as follows.

### 11.7 Replacement:

*The appliance is operated until steady conditions are established or until the **thermostat** interrupts the current for the first time after 16 h, whichever is shorter.*

## 12 Void

## 13 Leakage current and electric strength at operating temperature

This clause of Part 1 is applicable.

## 14 Transient overvoltages

This clause of Part 1 is applicable.

## 15 Moisture resistance

This clause of Part 1 is applicable except as follows.

### 15.2 Addition:

*The test is only applicable to **cistern-type water heaters**.*

### 15.3 Addition:

NOTE 101 If the appliance is too large for the humidity cabinet, the test may be carried out on those parts that contain electrical components.

## 16 Leakage current and electric strength

This clause of Part 1 is applicable.

## 17 Overload protection of transformers and associated circuits

This clause of Part 1 is applicable.

## 18 Endurance

This clause of Part 1 is not applicable.

## 19 Abnormal operation

This clause of Part 1 is applicable except as follows.

### 19.1 Modification:

*Instead of the tests specified for appliances incorporating heating elements, the following applies.*

*For closed water heaters, low-pressure water heaters and open-outlet water heaters, compliance is checked by the tests of 19.2, 19.3 and 19.4 if applicable. However, 19.101 applies instead for appliances not liable to be emptied in normal use and having all four of the following features:*

– *an outer enclosure of metal;*

NOTE 101 Non-metallic covers may be used for the supply terminals and controls.

± *non-combustible thermal insulation;*

NOTE 102 Insulation withstanding the needle flame test of Annex E is considered to be non-combustible.

± *a capacity exceeding 30 l;*

± *a rated power input not exceeding 6 kW.*

NOTE 103 Appliances are not considered liable to be emptied in normal use if emptying through the inlet is prevented by a check valve, a pipe interrupter or an air gap. These devices may be fitted in the inlet pipe in accordance with the instructions. Emptying through openings provided for servicing purposes only is not considered to be normal use.

NOTE 104 **Cistern-fed water heaters** and **cistern-type water heaters** are not subjected to the tests.

### 19.2 Addition:

*The appliance is operated empty, any thermal control that operates during the test of Clause 11 being short-circuited.*

NOTE 101 If the appliance is provided with more than one thermal control, these are short-circuited in turn.

### 19.3 Addition:

NOTE 101 If the water heater has been damaged during the previous test, a new appliance is used.

### 19.4 Replacement:

*For open-outlet water heaters, the test of 19.2 is repeated but with the container filled with water to a level at least 10 mm above the highest point of the heating element. The appliance is operated at 1,15 times **rated power input** under **normal operation**.*

NOTE 101 If the water heater has been damaged during previous tests, a new appliance is used.

### 19.13 Addition:

*There shall be no leakage from the container during the tests.*

**19.101** *The appliance is tested for 24 h under the conditions specified in Clause 11 but with the container empty.*

## 20 Stability and mechanical hazards

This clause of Part 1 is applicable.

## 21 Mechanical strength

This clause of Part 1 is applicable.

## 22 Construction

This clause of Part 1 is applicable except as follows.

### 22.6 Addition:

The enclosure shall have a drain hole positioned so that the water can drain without impairing electrical insulation, unless condensed water cannot accumulate within the enclosure in normal use. The hole shall be at least 5 mm in diameter or 20 mm<sup>2</sup> in area with a width of at least 3 mm.

*Compliance is checked by inspection and measurement.*

### 22.20 Addition:

Thermal insulation shall not be used for **basic insulation** of internal wiring.

### 22.47 Replacement:

Appliances shall withstand the water pressure occurring in normal use.

*Compliance is checked by subjecting the appliance to a water pressure of*

*± twice the **rated pressure**, for **closed water heaters**. If the water heater is supplied through a pressure reducing valve, the container is subjected to twice the working pressure instead;*

NOTE 1 The pressure reducing valve may be incorporated in the water-inlet pipe.

NOTE 2 The working pressure is the maximum pressure in the container measured during the test of Clause 11.

*± 1,5 times **rated pressure**, for **cistern-fed water heaters and low-pressure water heaters**;*

*± 0,15 MPa, for **open-outlet water heaters**;*

*± 0,03 MPa, for **cistern-type water heaters**.*

*Pressure-relief devices are rendered inoperative. The pressure is raised at a rate of 0,13 MPa/s to the specified value and is maintained at that value for 15 min.*

*Water shall not leak from the appliance and there shall be no permanent deformation to such an extent that compliance with this standard is impaired.*

NOTE 3 Heat exchangers incorporated in an appliance are subjected to a pressure test based on their working pressure.

NOTE 4 Damage to a protective coating on the inside of containers is not considered to be a hazard.

**22.101** The **rated pressure** of **closed water heaters** intended for direct connection to the water main shall be at least 0,6 MPa.

The **rated pressure** of **closed water heaters** and **low-pressure water heaters**, intended to be supplied by a pressure reducing valve that is not incorporated in the appliance, shall be at least 0,1 MPa.

The **rated pressure** of **cistern-fed water heaters** shall not exceed 0,2 MPa.

NOTE The **rated pressure** of **open-outlet water heaters** is 0 Pa.

*Compliance is checked by inspection.*

 **22.102** "Void" 

**22.103** Pressure-relief devices of **closed water heaters** shall prevent the pressure in the container from exceeding the **rated pressure** by more than 0,1 MPa.

*Compliance is checked by subjecting the container to a slowly increasing water pressure.*

NOTE The pressure-relief device may be fitted during installation.

**22.104** The outlet of **open-outlet water heaters** shall be constructed so that the water flow is not limited to such an extent that the container is subjected to a significant pressure.

NOTE This requirement is considered to be met if the cross-sectional area of the water outlet is not less than that of the inlet.

The vent pipe of **low pressure water heaters** shall have an internal diameter of at least 20 mm.

*Compliance is checked by inspection and measurement.*

**22.105** **Cistern-type water heaters** shall be constructed so that the container is always at atmospheric pressure by means of a vent having an area of at least 30 mm<sup>2</sup> and a minimum dimension of at least 3 mm.

*Compliance is checked by inspection and by measurement.*

**22.106** **Closed water heaters** shall incorporate a **thermal cut-out** providing **all-pole disconnection** and which operates independently from the **thermostat**. However, for appliances intended to be connected to fixed wiring, the neutral conductor need not be disconnected.

*Compliance is checked by inspection.*

**22.107** Heating elements and thermal control sensors in contact with the outer surface of the container shall be held in position securely.

*Compliance is checked by inspection.*

**22.108** Appliances for wall mounting shall have reliable provision for fixing to a wall, independent of the connection to the water mains.

*Compliance is checked by inspection.*



**22.109** Appliances having a capacity of more than 15 l that cannot be emptied through a drain fitted in the water pipes shall incorporate means for draining that requires a **tool** for its operation.

*Compliance is checked by inspection and by manual test.*

NOTE 1 Residual water in the container below the end of the inlet pipe is disregarded.

NOTE 2 The means for draining may be combined with a pressure-relief valve.

**22.110 Open-outlet water heaters** having plastic containers shall be constructed to ensure that the appliance is only likely to be installed in the intended orientation.

NOTE Appliances marked with the mounting position adjacent to the water connections are considered to meet this requirement.

*Compliance is checked by inspection.*

**22.111 Closed water heaters** incorporating a heat exchanger shall be constructed so that during normal use the **thermal cut-out** does not operate due to heat from the exchanger.

Thermostatic valves, by-pass valves and similar controlling devices used for this purpose shall be supplied with the appliance.

*Compliance is checked by inspection.*

**22.112 Closed water heaters** shall be constructed so that repeated drawing off does not cause the water to boil.

*Compliance is checked by the following test.*

*The appliance is operated as specified in Clause 11.*

*When the **thermostat** has operated for the first time, water is drawn off at a rate of approximately 2 l/min or 10 % of the capacity of the appliance per minute, whichever is less, until the **thermostat** switches on again.*

*When the **thermostat** next operates, water is drawn off again at the same rate until the **thermostat** switches on, this sequence being repeated until steady conditions are established.*

*The temperature of the water, measured by means of a thermocouple at the outlet, shall not exceed 98 °C.*

## **23 Internal wiring**

This clause of Part 1 is applicable.

## 24 Components

This clause of Part 1 is applicable except as follows.

### 24.1.4 Addition:

**Thermal cut-outs** incorporated in **closed water heaters** shall comply with the requirements for type 2B controls in Clauses 13, 15, 16 17 and 20 of IEC 60730-1, unless they are tested with the appliance.

**24.101 Thermal cut-outs** shall be non-self-resetting. They shall have a trip-free switching mechanism or be located so that they can only be reset after removal of a **non-detachable cover**.

*Compliance is checked by inspection.*

**24.102** The operating temperature of the **thermal cut-out** of a **closed water heater** shall ensure that the water temperature cannot exceed 99 °C or  $\square_{A1}$  that  $\square_{A1}$  the **thermal cut-out** operates before its temperature exceeds 110 °C.

*Compliance is checked by the test of 24.102.1 for water temperatures not exceeding 99 °C or by the test of 24.102.2 for **thermal cut-outs** having an operating temperature up to 110 °C.*

**24.102.1** *The appliance is operated under the conditions specified in Clause 11 until the **thermostat** operates for the first time. A quantity of water equal to 25 % of the capacity of the container is then drawn off so that it is replaced by cold water.*

*Immediately after the **thermostat** operates for the second time, it is short-circuited. The test is continued until the **thermal cut-out** operates. The outlet valve is then opened and the temperature of the water measured at the outlet.*

*The temperature shall not exceed 99 °C.*

**24.102.2** *The operating temperature of the **thermal cut-out** is measured by means of a thermocouple positioned on its sensing element or as close as possible to it.*

$\square_{A1}$  *The water temperature for appliances having vertically oriented metallic water containers is measured by a thermocouple attached to the outer surface of the upper dome. If the water container is horizontally oriented, two thermocouples are attached to the outer surface. The position of the thermocouple is shown in Figure 102a.*

*The water temperature for appliances having non-metallic water containers is measured by a thermocouple positioned 50 mm below the upper inner surface of the container, as shown in one of the diagrams of Figure 102b. This method may also be used to measure the water temperature of appliances having vertically oriented metallic water containers.*

*The appliance is operated at 1,15 times **rated power** input under **normal operation** with the outlet valve closed and **thermostats** short-circuited. The test is continued until the **thermal cut-out** operates.*

*The **thermal cut-out** shall operate before its temperature exceeds 110 °C. The water temperature shall not exceed 20 K of the maximum permitted operating temperature of the **thermal cut-out**.  $\square_{A1}$*

## 25 Supply connection and external flexible cords

This clause of Part 1 is applicable except as follows.

### 25.1 *Modification:*

Appliances shall not incorporate an appliance inlet.

## 26 Terminals for external conductors

This clause of Part 1 is applicable.

## 27 Provision for earthing

This clause of Part 1 is applicable except as follows.

### 27.1 *Addition:*

For **class I water heaters**, the sheath of the heating element shall be permanently and reliably connected to the earthing terminal unless

- the container is provided with inlet and outlet pipes of metal that are permanently and reliably connected to the earthing terminal, and
- other **accessible metal parts** of the container in contact with the water are permanently and reliably connected to the earthing terminal.

## 28 Screws and connections

This clause of Part 1 is applicable.

## 29 Clearances, creepage distances and solid insulation

This clause of Part 1 is applicable.

## 30 Resistance to heat and fire

This clause of Part 1 is applicable except as follows.

### 30.1 *Addition:*

*The temperature rises occurring during the tests of 19.2, 19.3 and 19.101 are not taken into account.*

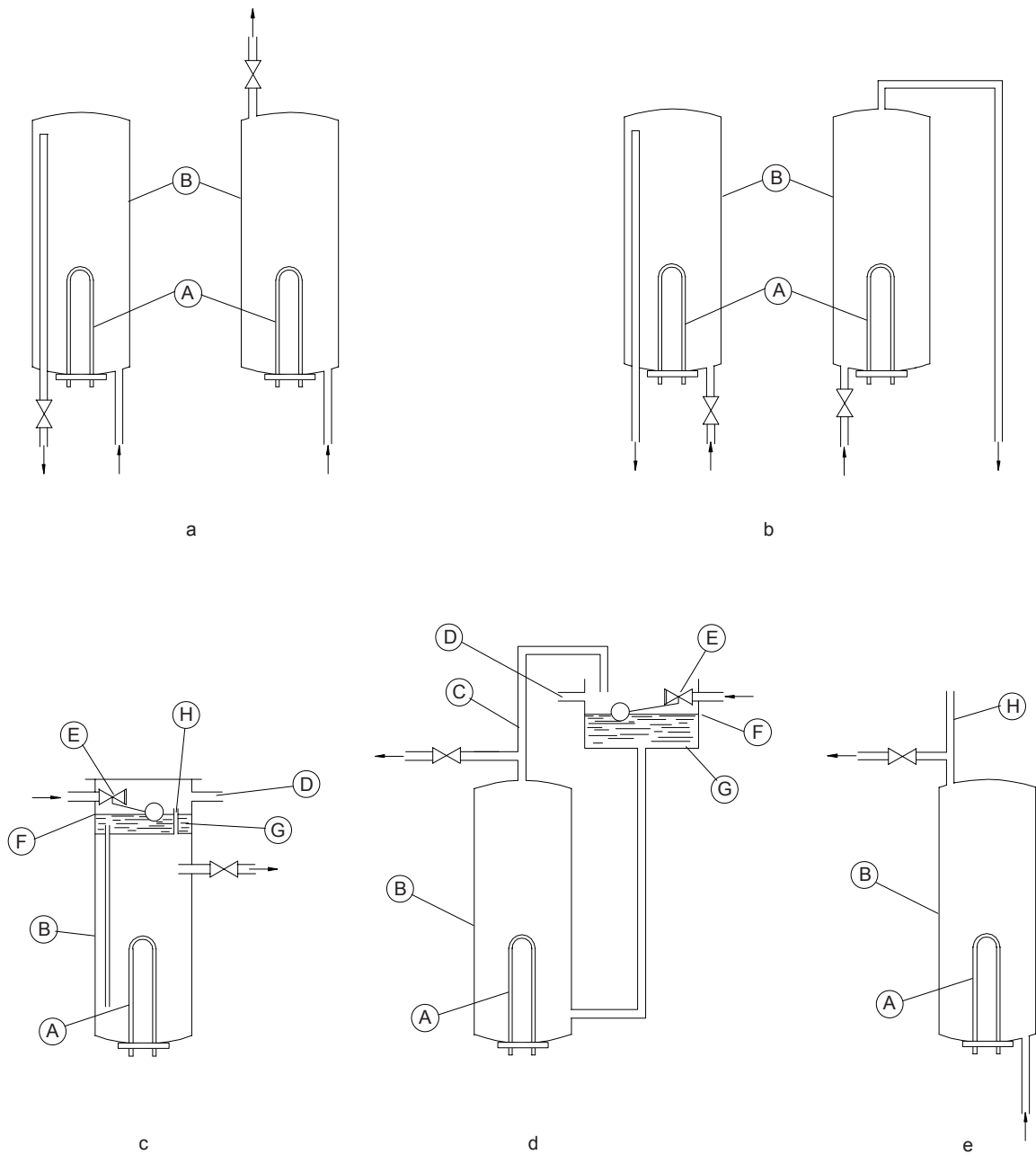
### 30.2.2 Not applicable.

## 31 Resistance to rusting

This clause of Part 1 is applicable.

## 32 Radiation, toxicity and similar hazards

This clause of Part 1 is applicable.



IEC 1269/02

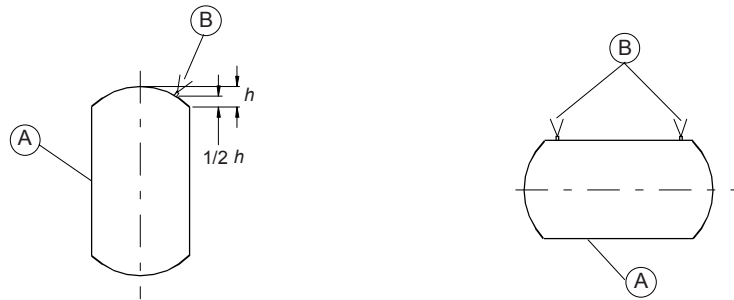
**Key**

- A Heating element
- B Container
- C Expansion pipe
- D Overflow pipe
- E Ball valve
- F Water level
- G Cistern
- H Vent pipe

**Type**

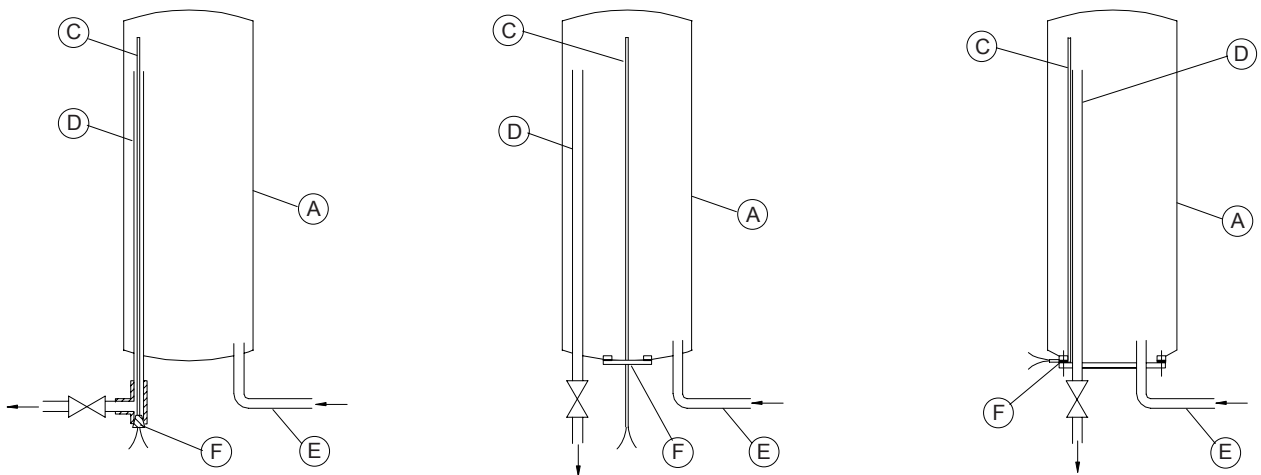
- a Closed water heaters
- b Open-outlet water heaters
- c Cistern-type water heater
- d Cistern-fed water heater
- e Low-pressure water heater

Figure 101 ± Examples of types of storage water heaters



IEC 1270/02

**Figure 102a ± Position of thermocouples for metallic water containers**



IEC 1271/02

The thermocouple in a tube is inserted in the outlet pipe through a sealed entry

The thermocouple in a tube is inserted through a sealed entry

Insulated thermocouple wires are inserted through a sealed entry and attached to the outlet pipe

**Figure 102b ± Position of thermocouples for vertically oriented water containers**

**Key**

- A Container
- B External thermocouple
- C Internal thermocouple
- D Outlet pipe
- E Inlet pipe
- F Sealed entry

**Figure 102 ± Examples of positions of the thermocouples**

## Annexes

The annexes of Part 1 are applicable except as follows.

### Annex A (informative)

#### Routine tests

This annex of Part 1 is applicable except as follows.

##### A.101 Pressure test

*The water container is subjected to a pressure test using a fluid.*

*When a liquid is used, the pressure is*

- ± *for **closed water heaters**, 0,7 MPa for those having a **rated pressure** not greater than 0,6 MPa, and 1,1 times **rated pressure** for others;*
- ± *for **cistern-fed water heaters** and **low-pressure water heaters**, 1,1 times **rated pressure**;*
- ± *for **open-outlet water heaters**, 0,05 MPa;*
- ± *for **cistern-type water heaters**, 0,03 MPa.*

*When gas is used, these pressures may be reduced but are to be sufficient to reveal leakage.*

NOTE Care should be taken when testing **closed water heaters** with gas.

*Leakage of the fluid is not to occur during the test.*

## Bibliography


The bibliography of Part 1 is applicable except as follows.

*Addition:*

IEC 60335-2-15, *Household and similar electrical appliances ± Safety ± Part 2-15: Particular requirements for appliances for heating liquids*

IEC 60335-2-35, *Household and similar electrical appliances ± Safety ± Part 2-35: Particular requirements for instantaneous water heaters*

IEC 60335-2-75, *Household and similar electrical appliances ± Safety ± Part 2-75: Particular requirements for commercial dispensing appliances and vending machines*

 ISO 13732-1, *Ergonomics of the thermal environment ± Methods for the assessment of human responses to contact with surfaces ± Part 1: Hot surfaces*



**Annex ZA**  
(normative)

**Special national conditions**

*Addition:*

Clause      Special national condition

**22.101**      **Denmark, Finland, Norway and Sweden**

For closed water heaters, the minimum rated pressure is 1,0 MPa.

**22.102**      **Denmark** (Instruction AT 2.1.2-4, 1994 and AT Instruction B.4.8)

Cold water inlets on the heated storage water heater, the safety valve and the blow out piping shall have a clear flow diameter of at least Ø 20 mm.

**Annex ZB**  
(informative)

**A-deviations**

*Addition:*

Clause      Deviation

**24.101**      **United Kingdom** (Building Regulation Part G3)

In addition to a non-self-resetting thermal cut-out, any closed water heater having a storage capacity in excess of 15 l shall be fitted with a temperature relief valve according to BS 6283 Part 2 or a combined temperature and pressure relief valve according to BS 6283 Part 3.

**24.102**      **United Kingdom** (Building Regulation Part G3)

The water temperature of the stored water shall not at any time exceed 99 °C in closed water heaters having a storage capacity in excess of 15 l.

**National Annex NA**  
(informative)

**Original IEC text amended by CENELEC common modifications**

*National Annex deleted*





---

---

## British Standards Institution (BSI)

BSI is the independent national body responsible for preparing British Standards. It presents the UK view on standards in Europe and at the international level. It is incorporated by Royal Charter.

### Revisions

British Standards are updated by amendment or revision. Users of British Standards should make sure that they possess the latest amendments or editions.

It is the constant aim of BSI to improve the quality of our products and services. We would be grateful if anyone finding an inaccuracy or ambiguity while using this British Standard would inform the Secretary of the technical committee responsible, the identity of which can be found on the inside front cover.  
Tel: +44 (0)20 8996 9000 Fax: +44 (0)20 8996 7400

BSI offers members an individual updating service called PLUS which ensures that subscribers automatically receive the latest editions of standards.

### Buying standards

Orders for all BSI, international and foreign standards publications should be addressed to Customer Services.

Tel: +44 (0)20 8996 9001 Fax: +44 (0)20 8996 7001

Email: [orders@bsigroup.com](mailto:orders@bsigroup.com)

You may also buy directly using a debit/credit card from the BSI Shop on the Website <http://www.bsigroup.com/shop>.

In response to orders for international standards, it is BSI policy to supply the BSI implementation of those that have been published as British Standards, unless otherwise requested.

### Information on standards

BSI provides a wide range of information on national, European and international standards through its Library and its Technical Help to Exporters Service. Various BSI electronic information services are also available which give details on all its products and services. Contact the Information Centre.

Tel: +44 (0)20 8996 7111 Fax: +44 (0)20 8996 7048

Email: [info@bsigroup.com](mailto:info@bsigroup.com)

Subscribing members of BSI are kept up to date with standards developments and receive substantial discounts on the purchase price of standards. For details of these and other benefits contact Membership Administration.

Tel: +44 (0)20 8996 7002 Fax: +44 (0)20 8996 7001

Email: [membership@bsigroup.com](mailto:membership@bsigroup.com)

Information regarding online access to British Standards via British Standards Online can be found at <http://www.bsigroup.com/BSOL>.

Further information about BSI is available on the BSI website at <http://www.bsigroup.com>.

### Copyright

Copyright subsists in all BSI publications. BSI also holds the copyright, in the UK, of the publications of the international standardization bodies. Except as permitted under the Copyright, Designs and Patents Act 1988 no extract may be reproduced, stored in a retrieval system or transmitted in any form or by any means – electronic, photocopying, recording or otherwise – without prior written permission from BSI.

This does not preclude the free use, in the course of implementing the standard, of necessary details such as symbols, and size, type or grade designations. If these details are to be used for any other purpose than implementation then the prior written permission of BSI must be obtained.

Details and advice can be obtained from the Copyright & Licensing Manager.

Tel: +44 (0)20 8996 7070 Email: [copyright@bsigroup.com](mailto:copyright@bsigroup.com)