

BS EN 16729-1:2016



BSI Standards Publication

Railway applications — Infrastructure — Non- destructive testing on rails in track

Part 1: Requirements for ultrasonic
inspection and evaluation principles

National foreword

This British Standard is the UK implementation of EN 16729-1:2016.

The UK participation in its preparation was entrusted to Technical Committee RAE/2, Railway Applications - Track.

A list of organizations represented on this committee can be obtained on request to its secretary.

This publication does not purport to include all the necessary provisions of a contract. Users are responsible for its correct application.

© The British Standards Institution 2016. Published by BSI Standards Limited 2016

ISBN 978 0 580 80335 2

ICS 93.100

Compliance with a British Standard cannot confer immunity from legal obligations.

This British Standard was published under the authority of the Standards Policy and Strategy Committee on 31 May 2016.

Amendments issued since publication

Date	Text affected
------	---------------

EUROPEAN STANDARD

EN 16729-1

NORME EUROPÉENNE

EUROPÄISCHE NORM

May 2016

ICS 93.100

English Version

Railway applications - Infrastructure - Non-destructive testing on rails in track - Part 1: Requirements for ultrasonic inspection and evaluation principles

Applications ferroviaires - Infrastructure - Essais non destructifs sur les rails de voie - Partie 1: Exigences pour les principes d'évaluation et d'inspection par ultrasons

Bahnanwendungen - Infrastruktur - Zerstörungsfreie Prüfung an Schienen im Gleis - Teil 1: Anforderungen an Ultraschallprüfungen und Bewertungsgrundlagen

This European Standard was approved by CEN on 12 March 2016.

CEN members are bound to comply with the CEN/CENELEC Internal Regulations which stipulate the conditions for giving this European Standard the status of a national standard without any alteration. Up-to-date lists and bibliographical references concerning such national standards may be obtained on application to the CEN-CENELEC Management Centre or to any CEN member.

This European Standard exists in three official versions (English, French, German). A version in any other language made by translation under the responsibility of a CEN member into its own language and notified to the CEN-CENELEC Management Centre has the same status as the official versions.

CEN members are the national standards bodies of Austria, Belgium, Bulgaria, Croatia, Cyprus, Czech Republic, Denmark, Estonia, Finland, Former Yugoslav Republic of Macedonia, France, Germany, Greece, Hungary, Iceland, Ireland, Italy, Latvia, Lithuania, Luxembourg, Malta, Netherlands, Norway, Poland, Portugal, Romania, Slovakia, Slovenia, Spain, Sweden, Switzerland, Turkey and United Kingdom.



EUROPEAN COMMITTEE FOR STANDARDIZATION
COMITÉ EUROPÉEN DE NORMALISATION
EUROPÄISCHES KOMITEE FÜR NORMUNG

CEN-CENELEC Management Centre: Avenue Marnix 17, B-1000 Brussels

Contents	Page
European foreword	3
Introduction	4
1 Scope	5
2 Normative references	5
3 Terms and definitions	5
4 Basics	6
4.1 General	6
4.2 Principle of ultrasonic testing in track	7
4.3 Ultrasonic testing speed and detection of discontinuities	7
4.4 Simulation of internal reflectors in reference rails	7
5 Detection of reference reflectors	10
6 Control of positioning accuracy	13
Annex A (normative) Simulated reflectors in reference rails	14
Annex B (informative) Simulated reflectors in reference rails	33
Annex C (informative) Ultrasonic test areas in rails tested with test vehicles or manually-propelled devices	37
Annex ZA (informative) Relationship between this European standard and the Essential Requirements of EU Directive 2008/57/EC	39
Bibliography	40

European foreword

This document (EN 16729-1:2016) has been prepared by Technical Committee CEN/TC 256 “Railway applications”, the secretariat of which is held by DIN.

This European Standard shall be given the status of a national standard, either by publication of an identical text or by endorsement, at the latest by November 2016, and conflicting national standards shall be withdrawn at the latest by November 2016.

Attention is drawn to the possibility that some of the elements of this document may be the subject of patent rights. CEN shall not be held responsible for identifying any or all such patent rights.

This document has been prepared under a mandate given to CEN by the European Commission and the European Free Trade Association, and supports essential requirements of EU Directive 2008/57/EC.

For relationship with EU Directive 2008/57/EC, see informative Annex ZA, which is an integral part of this document.

This series of European Standards EN 16729, *Railway applications — Infrastructure — Non-destructive testing on rails in track*, consists of:

- *Part 1: Requirements for ultrasonic inspection and evaluation principles;*
- *Part 2: Eddy current testing of rails in track [planned];*
- *Part 3: Requirements for identifying internal and surface rail defects [planned];*
- *Part 4: Qualification of personnel for non-destructive testing on rails [planned].*

According to the CEN-CENELEC Internal Regulations, the national standards organizations of the following countries are bound to implement this European Standard: Austria, Belgium, Bulgaria, Croatia, Cyprus, Czech Republic, Denmark, Estonia, Finland, Former Yugoslav Republic of Macedonia, France, Germany, Greece, Hungary, Iceland, Ireland, Italy, Latvia, Lithuania, Luxembourg, Malta, Netherlands, Norway, Poland, Portugal, Romania, Slovakia, Slovenia, Spain, Sweden, Switzerland, Turkey and the United Kingdom.

Introduction

This European Standard represents the actual state of the art of automated ultrasonic testing of rails in track applied by European railway companies.

1 Scope

This European Standard applies to testing of rails installed in track for detecting internal discontinuities.

This part applies to testing equipment fitted to dedicated test vehicles or manually-propelled devices. This European Standard does not define the requirements for vehicle acceptance. This part of the standard does not apply to ultrasonic testing of rails in a production plant.

The European Standard specifies the requirements for testing principles and systems in order to produce comparable results with regard to location, type and size of discontinuities in rails. This European Standard is not aiming to give any guidelines for managing the result of ultrasonic rail testing.

This European Standard applies only to rail profiles meeting the requirements of EN 13674-1.

2 Normative references

The following documents, in whole or in part, are normatively referenced in this document and are indispensable for its application. For dated references, only the edition cited applies. For undated references, the latest edition of the referenced document (including any amendments) applies.

EN 1330-4, *Non-destructive testing - Terminology - Part 4: Terms used in ultrasonic testing*

EN 13674-1, *Railway applications - Track - Rail - Part 1: Vignole railway rails 46 kg/m and above*

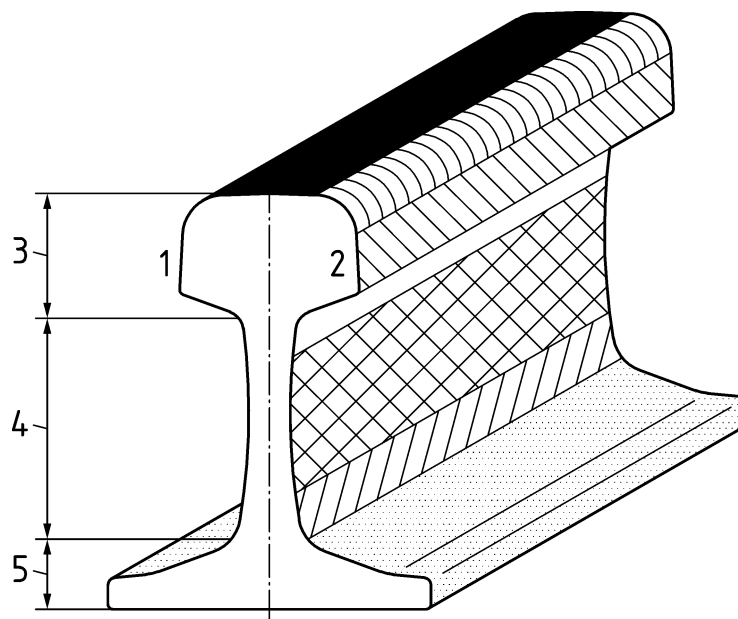
3 Terms and definitions

For the purposes of this document, the terms and definitions given in EN 1330-4 and the following apply.

3.1

parts of the rail

components that constitute the rail itself as shown in Figure 1



Key

- 1 field side
- 2 gauge corner side
- 3 rail head
- 4 rail web
- 5 rail foot
- running surface
- gauge corner area
- rail head side area
- rail head fillet radius area
- rail web area
- rail foot fillet radius area
- rail foot area

Figure 1 — Parts of the rail

3.2

simulated reflector

artificial feature designed to represent a real defect of a known size, orientation and position

3.3

functional reflector

artificial feature designed to dynamically test an ultrasonic system at normal operation speed

4 Basics

4.1 General

In order to verify the performance of the automated ultrasonic systems for rail testing there shall be defined reference reflectors in a test track. These reference reflectors shall be recorded and reported at the normal operational speed of the test vehicle/system.

The reference rail in the test track shall be constructed from new rail to provide the correct head profile and running surface condition. Rails with corrosion on the running surface shall be cleaned to allow the transmission of ultrasound prior to any testing, for example using a powered steel wire brush.

A signal shown on the display of an ultrasonic instrument or system as a result of received ultrasonic pulse is called an indication. Evidence obtained by non-destructive testing.

In test systems according to this standard ultrasound at a frequency range of 2 MHz to 5 MHz is used.

A flat-bottomed hole (FBH) shall be machined using a twist drill at the appropriate diameter followed by a slot drill hole of the same diameter to the required depth to generate the flat end of the hole. Accuracy in diameter and depth shall be within 0,1 mm. Accuracy in angle shall be within 0,1°.

A side drilled hole (SDH) shall be machined using a twist drill at the appropriate diameter. Accuracy in diameter shall be within 0,1 mm. Accuracy in angle shall be within 0,1°.

An electrical discharge machined (EDM) notch shall be machined to the desired shape and orientation with an accuracy of 0,1 mm. Accuracy in angle shall be within 0,1°.

Due to wear of the rail, dimension might vary. If the rail is used for distance and sensitivity setting of Ultrasonic Testing (UT) inspection devices this needs to be taken into account.

4.2 Principle of ultrasonic testing in track

Ultrasonic waves transmitted into the rail will be reflected from the surfaces of the rail body. Fractures and other discontinuities within the rail, as well as the boundary of the rail will act as reflecting surfaces. By receiving, recording and interpreting the returned ultrasonic signals, it is possible to detect discontinuities within a rail installed in track before they present an unacceptable risk to the integrity and strength of the rail. Annex C gives examples of test areas in rails tested with test vehicles or manually propelled devices.

4.3 Ultrasonic testing speed and detection of discontinuities

Ultrasonic beams have a width which is determined by the size of the transducer and the frequency. All reflectors interact with the ultrasonic beam. The beam sweeps across the reflector when the vehicle and / or manually-propelled device travels along the track. Ultrasound will be reflected and detected by the transducer. All ultrasonic systems use a threshold level in a gate and the system will record a response when the reflection is above the threshold level. By controlling the gain in the ultrasonic system and the gate threshold level the number of responses for a given size of reflector can be defined.

A reflector can be sized by setting the system parameters so that a known number of responses are received from a known sized reference reflector. The relationship of the number of responses and the size of the reference reflector is known. This applies to all the reflectors in Annex A.

The maximum testing speed depends upon the rail profile (longitudinal and transverse), reflector size to be detected, the beam width, sampling frequency and the number of responses required for an indication to be recorded.

4.4 Simulation of internal reflectors in reference rails

Reference rails incorporating sets of reference reflectors selected from Annex A shall be created. In addition, reference rails incorporating sets of reference reflectors selected from Annex B may be created. They shall be installed in the left and right rails of a section of track if test vehicles are used. If only trolleys or manually-propelled devices are used the reference rails may be installed out-of-track. The length of the reference rails is not defined by this standard. When in track carrying traffic, the distance between the simulated reflectors and functional reflectors should be assessed by the Infrastructure Manager with consideration to the structural integrity of the rail. Reference reflectors shall be orientated to check probes scanning in both directions.

To prevent the influence of water and dirt on the ultrasonic responses, reference holes and notches shall be plugged with a synthetic compound.

Where the reference rails carry traffic the infrastructure manager shall carry out a risk assessment to determine if reinforcement of the reference reflectors is necessary (fishplates or similar) and determine the maintenance regime of the reference rails.

When several values are given for a certain quantity in Table 1, they are all mandatory. If a range is given for a quantity the user may chose a value within this range.

For example reflector No. 01 consists of three holes in a rail. All holes have a diameter of 6 mm. The distance from the running surface to the centre of the hole is 7 mm for the first hole and 10 mm and 20 mm for the second and third hole respectively. This leads to three holes in a rail for reflector No. 01.

No. 02 consists of four holes in a rail. Two holes for the forward direction and two holes for the backward direction. The distance from the running surface (see Figure A.2) can be chosen within a range of 10 mm to 20 mm. The holes per direction have a diameter of 5 mm and 10 mm respectively. This leads to four holes in a rail for reflector No. 02.

Table 1 — Artificial reflectors in reference rails (normative references)

No.	Figure, shown in Annex A	Type S/F ^a	Description	Dimensions mm
01	Figure A.1	F	Volumetric reflector in rail head	$a = 7; 10; 20$ $d = 6$
02	Figure A.2	S	Central transverse reflector (20°) in rail head	$a = 10 \text{ to } 20$ $d = 5; 10$
03	Figure A.3	S	Gauge transverse reflector (20°) in rail head	$a = 10 \text{ to } 20$ $b = 10 \text{ to } 15$ $d = 5; 10$
04	Figure A.4	S	Full width transverse reflector (20°) in rail head	$a = 20$ $d = 3$ $l = 7$
05	Figure A.5	S	Full width transverse reflector (35°) in rail head	$a = 20$ $d = 3$ $l = 7$
06	Figure A.6	S	Full width transverse reflector (53°) in rail head	$a = 20$ $d = 3$ $l = 7$
07	Figure A.7	F	Volumetric reflector gauge side of rail head	$a = 25$ $b = 20; 25; 30; 36$ $d = 6 \text{ to } 8$
08	Figure A.8	F	Volumetric reflector field side of rail head	$a = 25$ $b = 20; 25; 30; 36$ $d = 6 \text{ to } 8$
09	Figure A.9	S	Horizontal reflector in rail head	$a = 20$ $d = 5; 8; 10$
10	Figure A.10	S	Horizontal bolt hole slot	$l = 5; 10$
11	Figure A.11	S	Bolt hole slot, position A	$l = 5; 10$
12	Figure A.12	S	Bolt hole slot, position B	$l = 5; 10$

No.	Figure, shown in Annex A	Type S/F ^a	Description	Dimensions mm
13	Figure A.13	S	Bolt hole slot, position C	$l = 5; 10$
14	Figure A.14	S	Bolt hole slot, position D	$l = 5; 10$
15	Figure A.15	F	Volumetric reflector at head – web radius	$d = 6$
16	Figure A.16	F	Volumetric reflector mid – web	$d = 6$
17	Figure A.17	F	Volumetric reflector at foot – web radius	$d = 6$
18	Figure A.18	S	Head – web radius transverse reflector (35°)	$d = 3$ $l = 10$
19	Figure A.19	S	Foot – web radius transverse reflector (53°)	$d = 3$ $l = 10$
20	Figure A.20	S	Vertical longitudinal reflector (version 1)	$a = 20$ $h = 10; 15; 20$ $l = 50 \text{ to } 100$
21	Figure A.21	S	Vertical longitudinal reflector (version 2)	$a = 20$ $d = 5$ $l = 50 \text{ to } 100$
22	Figure A.22	S	Change in foot depth	$c_1 = 5$ $c_2 = 10$ $l = 80$ $w = 30$
23	Figure A.23	S	Rail foot notch 5 mm (version 1)	$c = 5$ $r = 17$
24	Figure A.24	S	Rail foot notch 10 mm (version 1)	$c = 10$ $r = 22$
25	Figure A.25	F	Multiple repeated reflector	$a = 25$ $d = 6$ 10 holes within 2 000
26	Figure A.26	F	Resolution check reflector	$a = 25$ $d = 6$ $l_1 = 8$ $l_2 = 9$ $l_3 = 11$ $l_4 = 13$ $l_5 = 16$ $l_6 = 21$ $l_7 = 26$
^a S = simulated reflector, F = functional reflector				

Table 2 — Artificial reflectors in reference rails (informative references)

No.	Figure, shown in Annex B	Type S/F ^a	Description	Dimensions mm
27	Figure B.1	S	Simulated gauge corner reflector	$a = 20$ $b = 20$
28	Figure B.2	S	Horizontal reflector in rail head	$a = 5$ $b = 25$ $l = 25$
29	Figure B.3	S	Horizontal head - web reflector (mid rail)	$l = 5$
30	Figure B.4	S	Horizontal head - web reflector (rail end)	$l = 15$
31	Figure B.5	S	Vertical longitudinal reflector (version 3)	$a = 40$ $l = 75$
32	Figure B.6	S	Rail foot notch 5 mm (version 2)	$c = 5$ $r = 35$
33	Figure B.7	S	Rail foot notch 10 mm (version 2)	$c = 10$ $r = 40$

^a S = simulated reflector, F = functional reflector

5 Detection of reference reflectors

The reference reflectors listed in Table 1 and Table 2 shall be detectable with the mandatory probe angles listed in Table 3 and Table 4.

Where the end of a drill hole is used as a reflector the hole bottom shall be machined flat (FBH – flat bottomed hole).

The ultrasonic probe angles listed in Table 3 and Table 4 are used in most ultrasonic test vehicles or manually propelled devices. The infrastructure manager shall define which probe angles are to be used. This will be dependent on what reflectors are to be detected.

All angled transducers shall be configured to scan in both directions (forward and backward). Reference reflectors shall be orientated to check probe scanning in both directions.

Table 3 — Reference reflectors (Table 1) to be detected with defined probe angles

No.	Reflector	Centreline of the rail head					Parallel within the gauge corner	Squinting in the direction of gauge corner
		0°	35° to 40°	50° to 60°	45° to 55° T ^a	65° to 70°		
01	Volumetric reflector in rail head	M	O	O		M	M	O
02	Central transverse reflector (20°) in rail head					M		
03	Gauge transverse reflector (20°) in rail head					O	M	
04	Full width transverse reflector (20°) in rail head	O	O	O		M	M	
05	Full width transverse reflector (35°) in rail head	O	O	M		M	M	
06	Full width transverse reflector (53°) in rail head	O	M	O				
07	Volumetric reflector gauge side of rail head				O	O	M	
08	Volumetric reflector field side of rail head				O	O	M	
09	Horizontal reflector in rail head (version 1)	M						
10	Horizontal bolt hole slot	M						
11	Bolt hole slot position A	O	M	O		O		
12	Bolt hole slot position B	O	M					
13	Bolt hole slot position C	O	M	O		O		
14	Bolt hole slot position D	O	M					
15	Volumetric reflector at head - web radius	M	M	O				
16	Volumetric reflector mid - web	M	M					
17	Volumetric reflector at foot - web radius	O	M					
18	Head - web radius transverse reflector (35°)	O		M				
19	Foot - web radius transverse reflector (53°)		M					
20	Vertical longitudinal reflector (version 1)	O			M			

No.	Reflector	Centreline of the rail head					Parallel within the gauge corner	Squinting in the direction of gauge corner
		0°	35° to 40°	50° to 60°	45° to 55° T ^a	65° to 70°		
		0°	35° to 40°	50° to 60°	45° to 55° T ^a	65° to 70°	65° to 70°	65° to 70°
21	Vertical longitudinal reflector (version 2)	O			M			
22	Change in foot depth	M						
23	Rail foot notch 5 mm (version 1)		M					
24	Rail foot notch 10 mm (version 1)		M					
25	Multiple repeated reflector	O	O	O		M	O	
26	Resolution check reflectors	O	O	O		M	O	
Key M mandatory O optional NOTE Probe angles defined with respect to the vertical plane.								
^a Probe angle transverse to rail length								

Table 4 — Reference reflectors (Table 2) to be detected with defined probe angles

No.	Reflector	Centerline of the rail head					Parallel within the gauge corner	Squinting in the direction of gauge corner
		0°	35° to 40°	50° to 60°	45° to 55° T ^a	65° to 70°		
		0°	35° to 40°	50° to 60°	45° to 55° T ^a	65° to 70°	65° to 70°	65° to 70°
27	Simulated gauge corner reflector					O	M	M
28	Horizontal reflector in rail head	M						
29	Horizontal head – web reflector (mid rail)	M						
30	Horizontal head – web reflector (rail end)	M	O					
31	Vertical longitudinal reflector (version 3)				M			
32	Rail foot notch 5 mm (version 2)		M					
33	Rail foot notch 10 mm (version 2)		M					
Key M mandatory if Annex B is applied O optional NOTE Probe angles defined with respect to the vertical plane.								
^a Probe angle transverse to rail length.								

6 Control of positioning accuracy

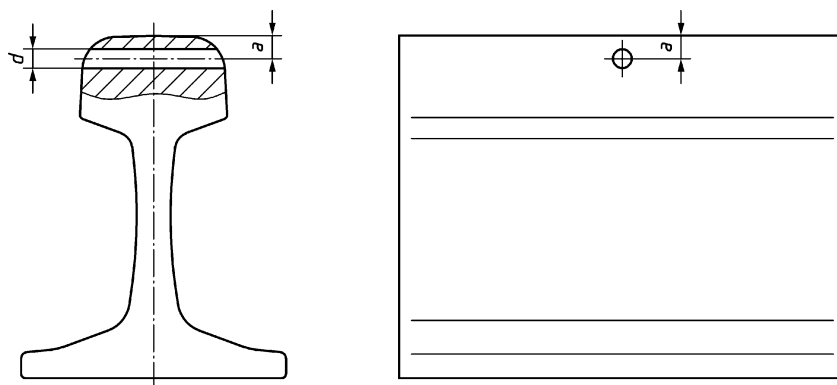
To determine the distance of the defects accurately reference reflectors (e.g. bolt holes) of a known size and separation shall be tested in both directions. See Table 5 as an example.

Table 5 — Permitted tolerances of the positioning accuracy

No. of reflector	Distance to reflector 01 m	Permitted difference mm
01	0	first reflector
02	50	±100
03	100	±200
04	150	±300
05	200	±400
06	250	±500
07	300	±600
08	350	±700
09	400	±800
10	450	±900
11	500	±1 000

Annex A
 (normative)

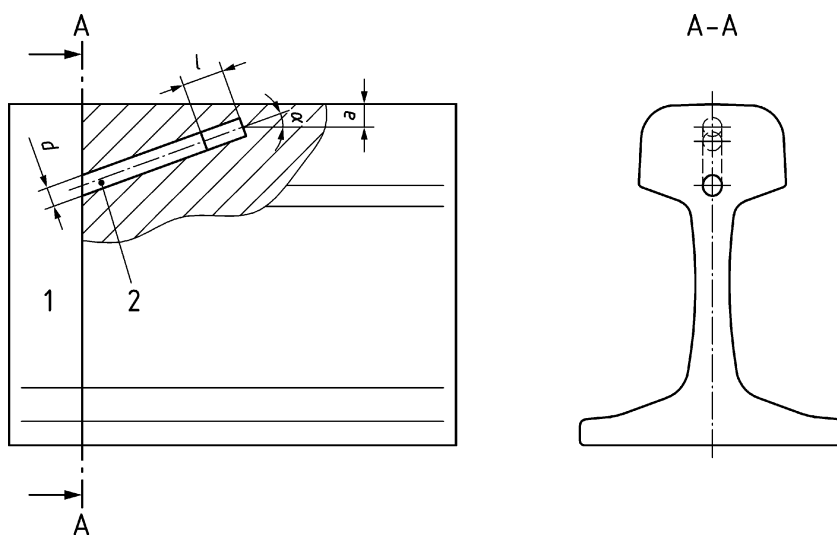
Simulated reflectors in reference rails



Key

- a* see Table 1
- d* see Table 1

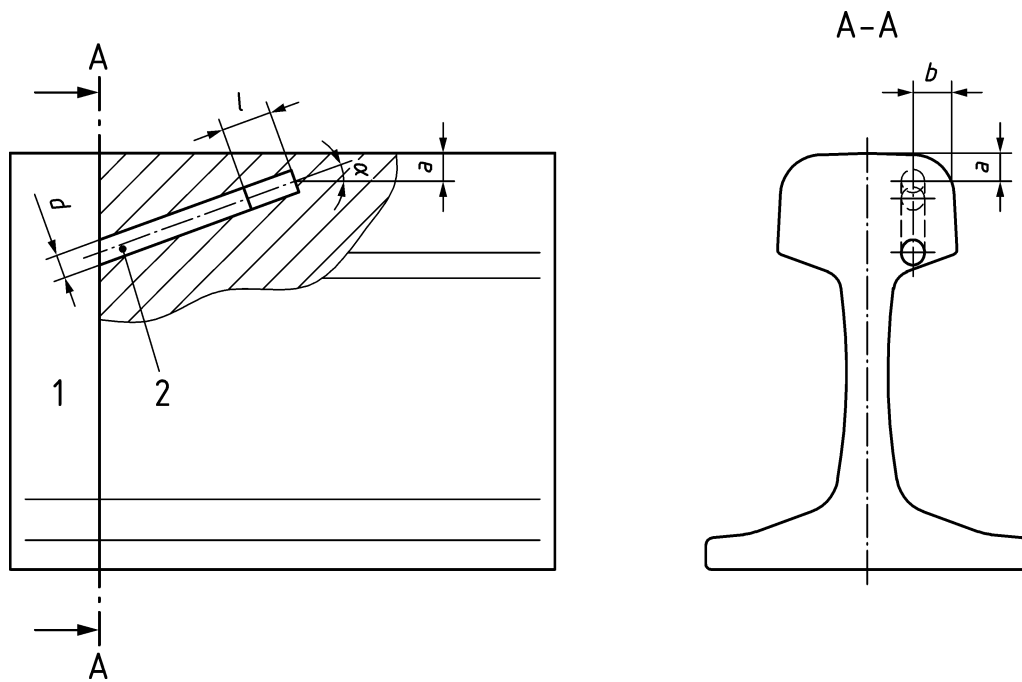
Figure A.1 — Volumetric reflector in rail head



Key

- a* see Table 1
- d* see Table 1
- α 20°
- l* 20 mm
- 1 weld
- 2 plug of rail steel

Figure A.2 — Central transverse reflector (20°) in rail head

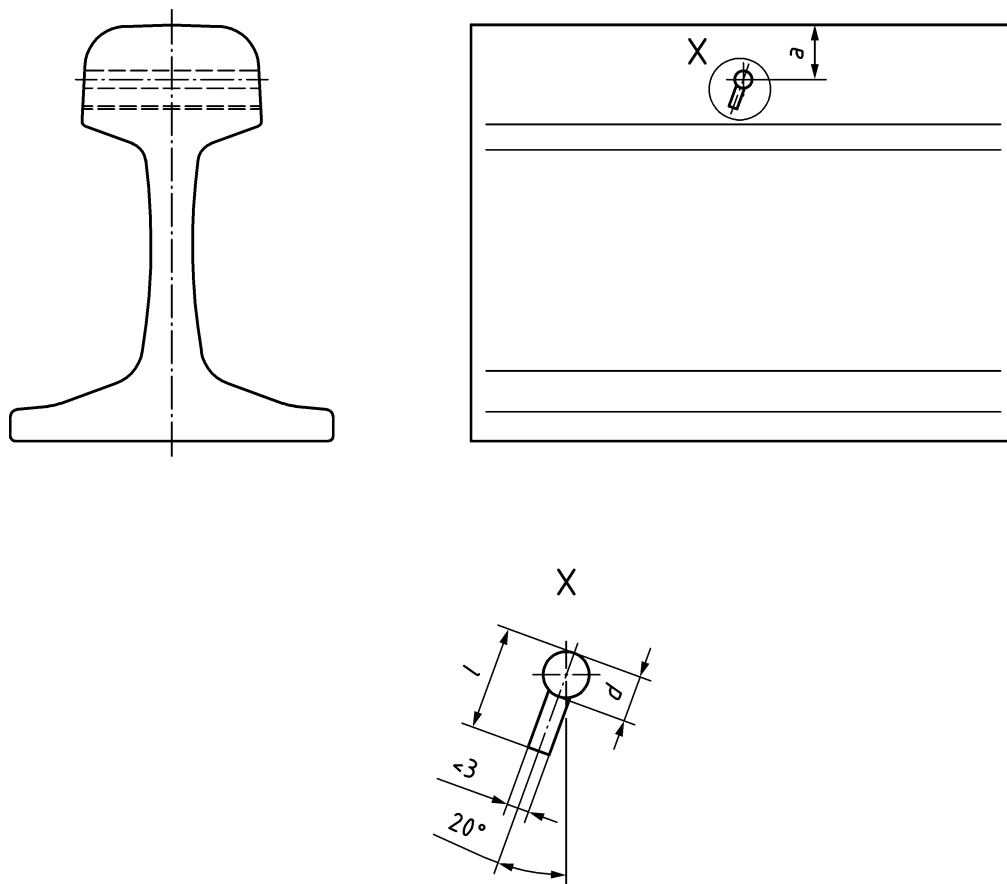


Key

- a see Table 1
- b see Table 1
- d see Table 1
- α 20°
- l 20 mm
- 1 weld
- 2 plug of rail steel

Figure A.3 — Gauge transverse reflector (20°) in rail head

Dimensions in millimetres



Key

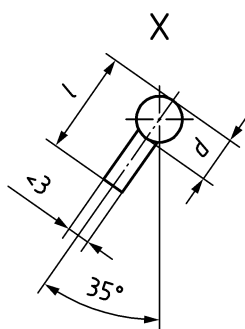
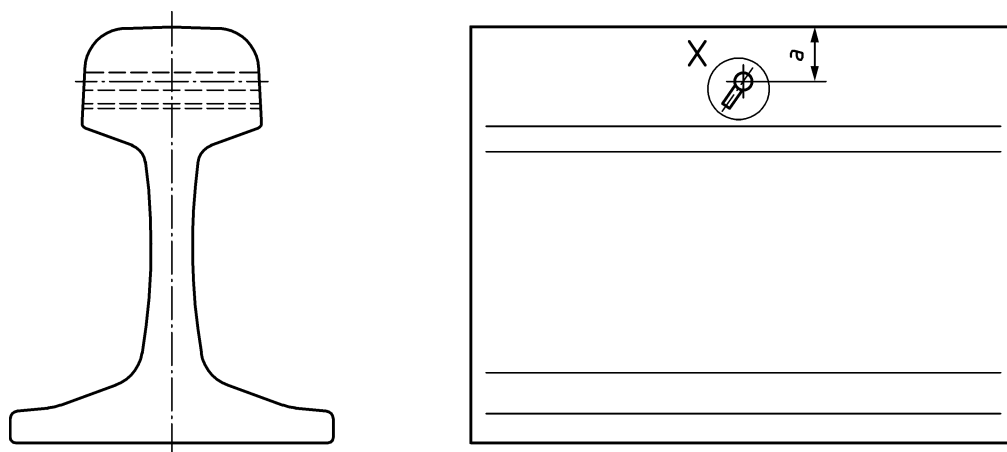
a see Table 1

d see Table 1

l see Table 1

Figure A.4 — Full width transverse reflector (20°) in rail head

Dimensions in millimetres



Key

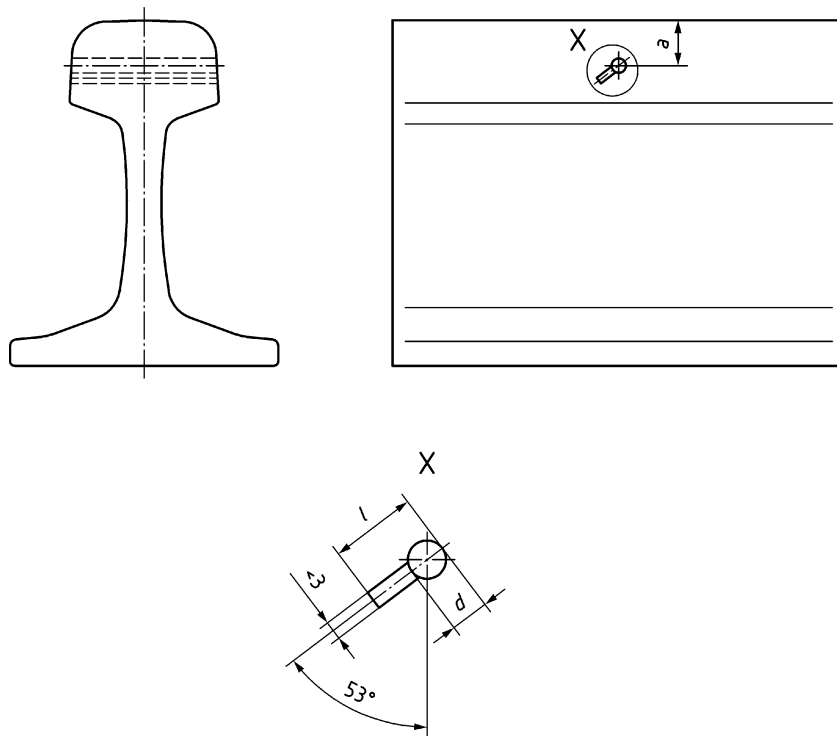
a see Table 1

d see Table 1

l see Table 1

Figure A.5 — Full width transverse reflector (35°) in rail head

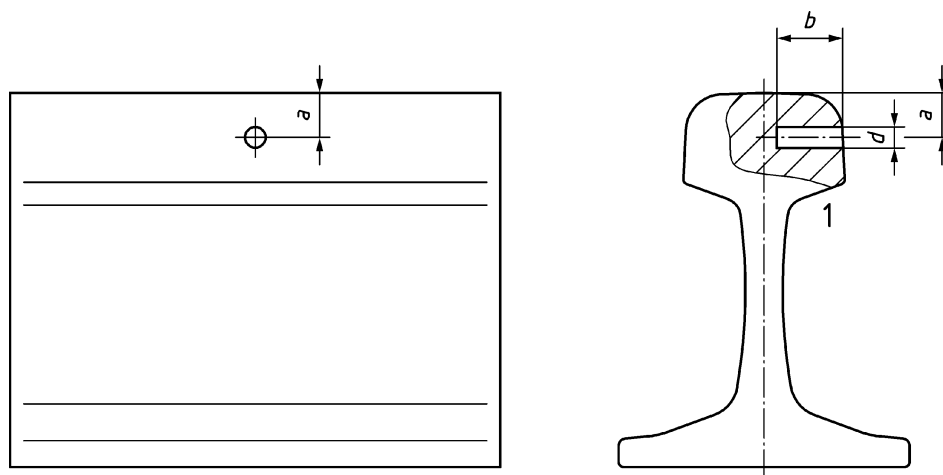
Dimensions in millimetres



Key

- a* see Table 1
- d* see Table 1
- l* see Table 1

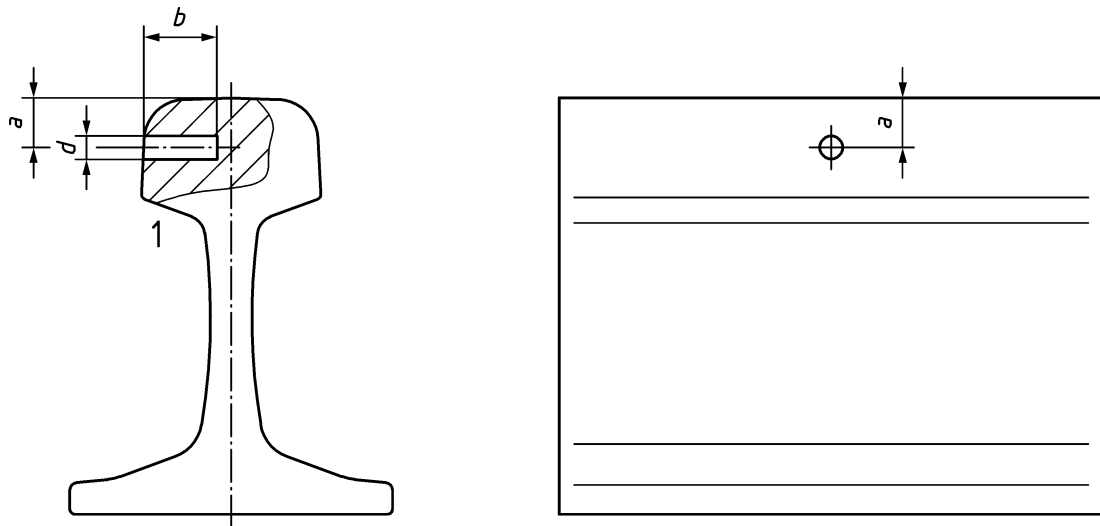
Figure A.6 — Full width transverse reflector (53°) in rail head



Key

- a* see Table 1
- b* see Table 1
- d* see Table 1
- 1 gauge side of rail

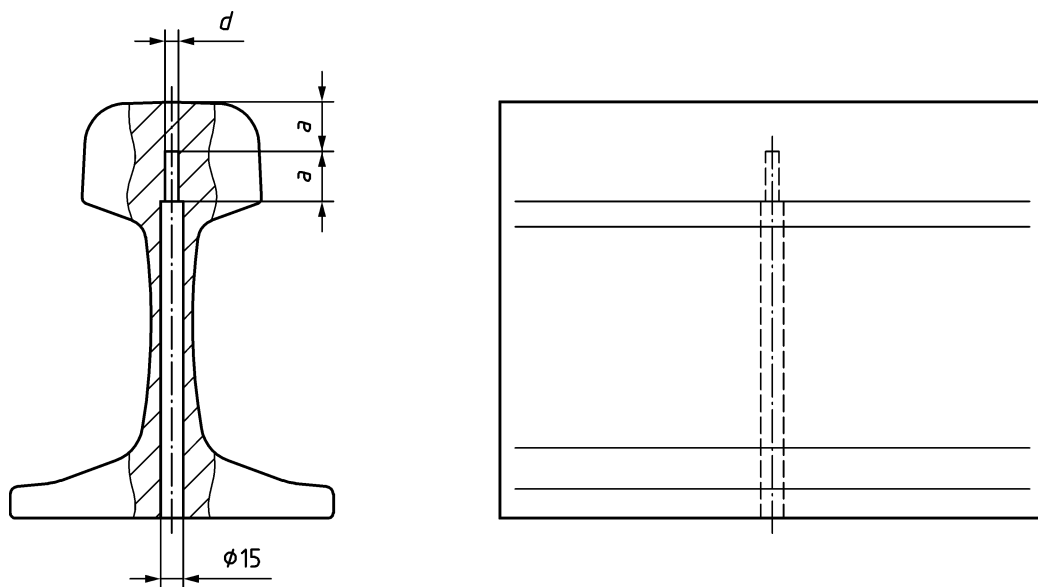
Figure A.7 — Volumetric reflector gauge side of rail head



Key

- a* see Table 1
- b* see Table 1
- d* see Table 1
- 1 field side of rail

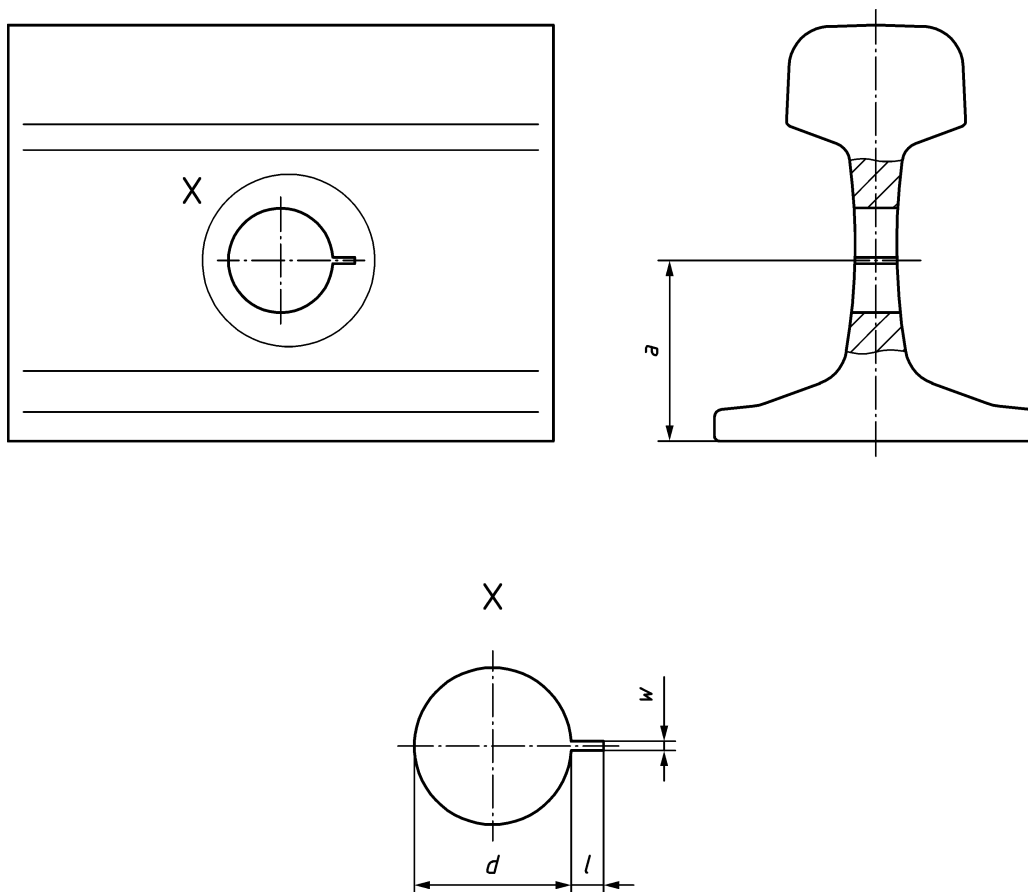
Figure A.8 — Volumetric reflector field side of rail head



Key

- a* see Table 1
- d* see Table 1

Figure A.9 — Horizontal reflector in rail head



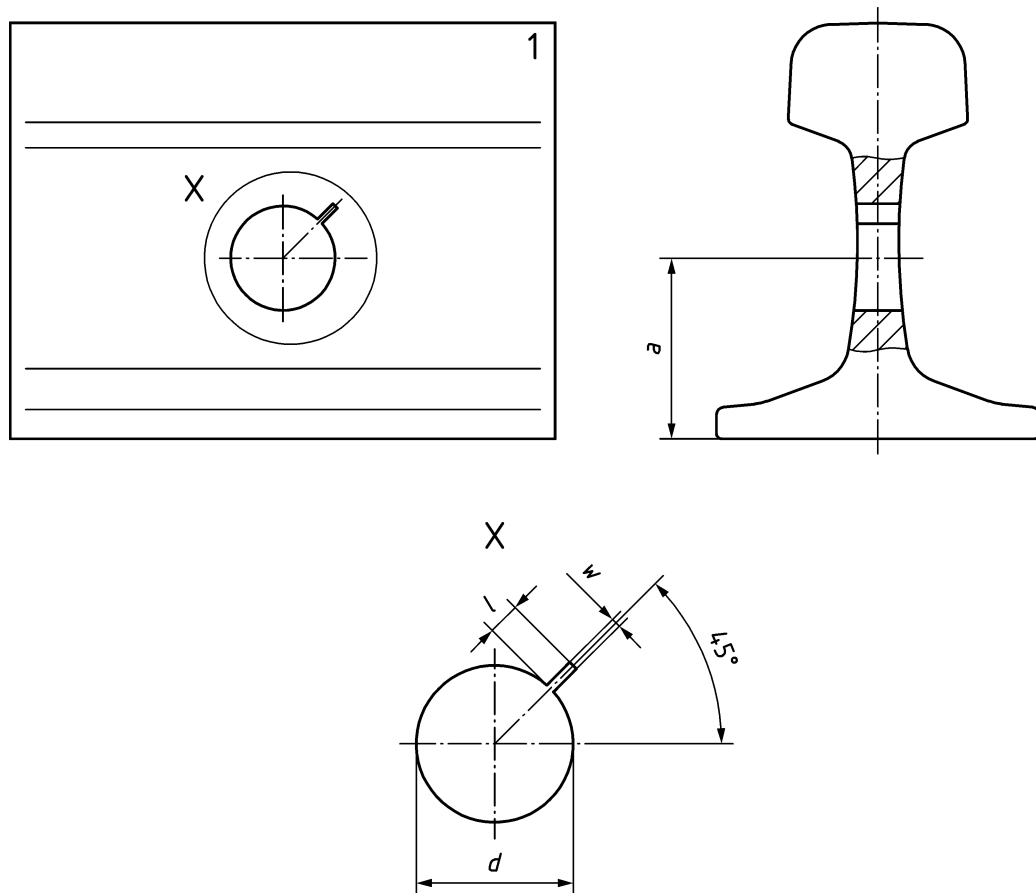
Key

a, d according to the current definition of the infrastructure manager

l see Table 1

$w \leq 3 \text{ mm}$

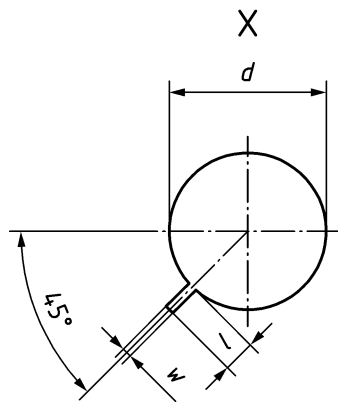
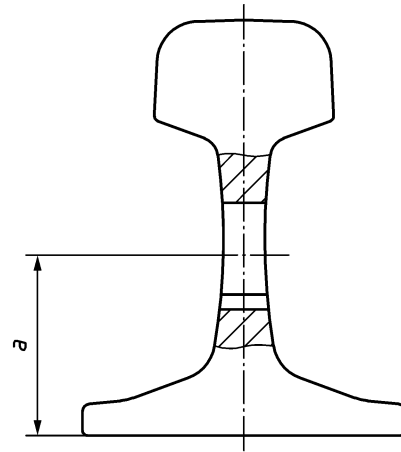
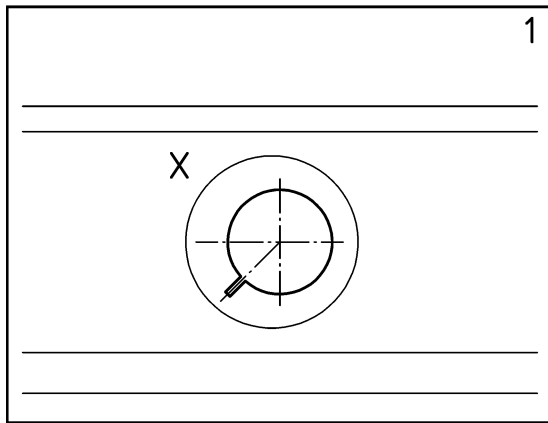
Figure A.10 — Horizontal bolt hole slot



Key

- a, d according to the current definition of the infrastructure manager
- l see Table 1
- w ≤ 3 mm
- 1 rail end

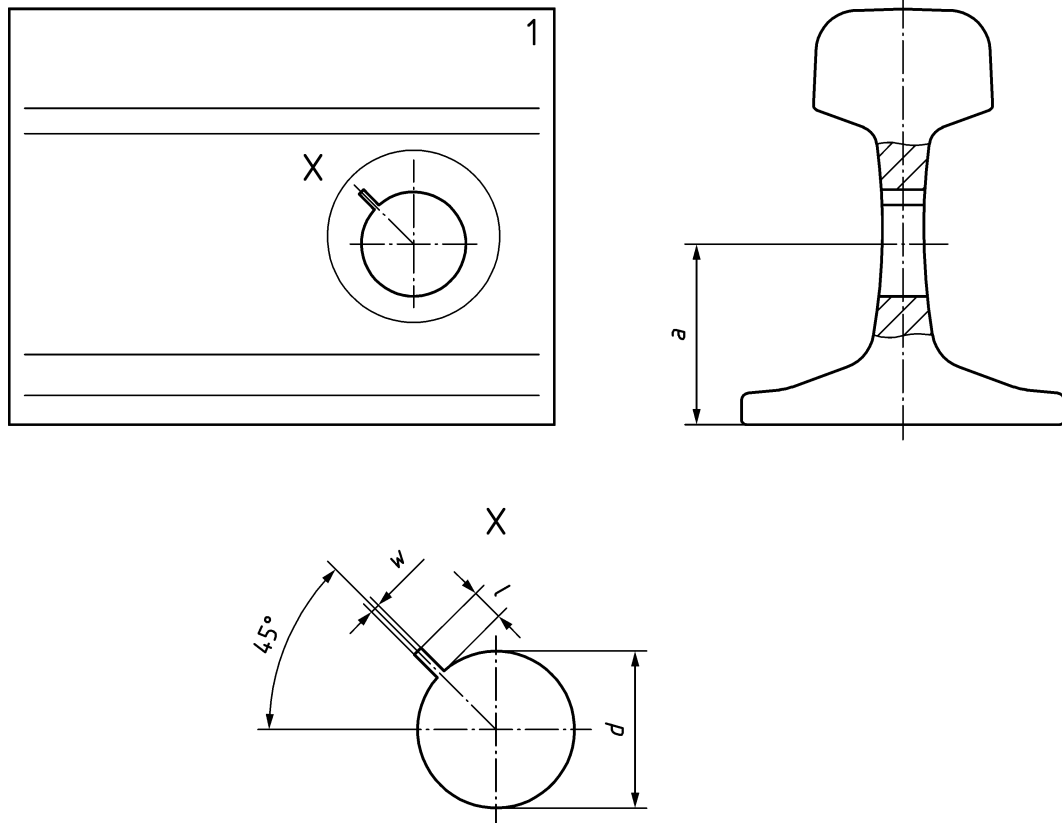
Figure A.11 — Bolt hole slot position A



Key

- a, d* according to the current definition of the infrastructure manager
- l* see Table 1
- w* ≤ 3 mm
- 1** rail end

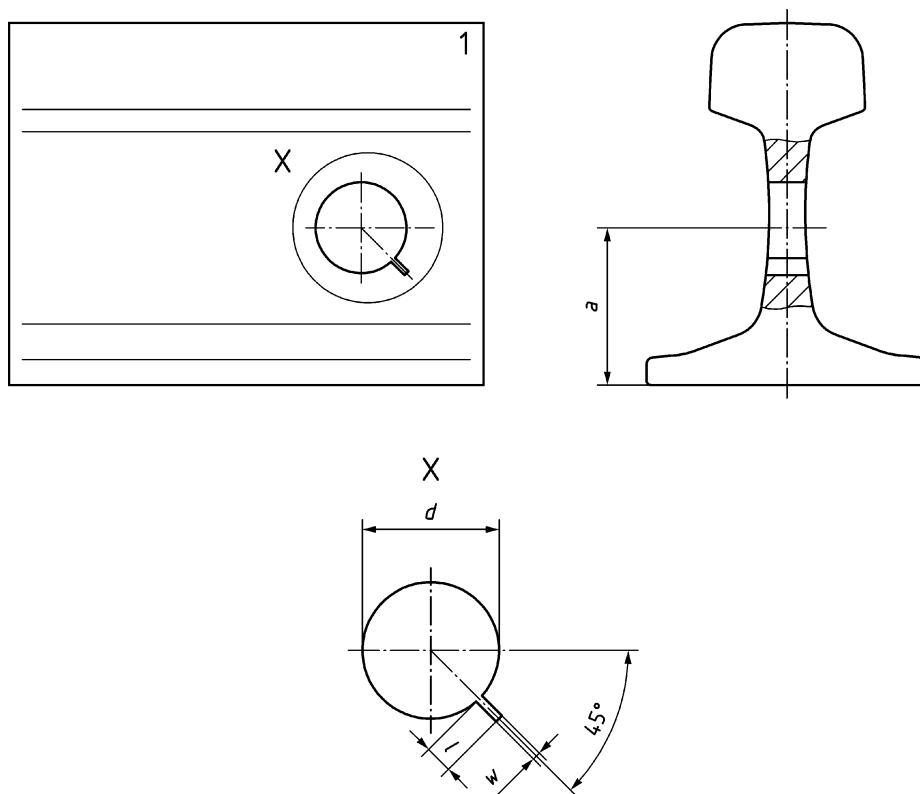
Figure A.12 — Bolt hole slot position B



Key

- a, d according to the current definition of the infrastructure manager
- l see Table 1
- w ≤ 3 mm
- 1 rail end

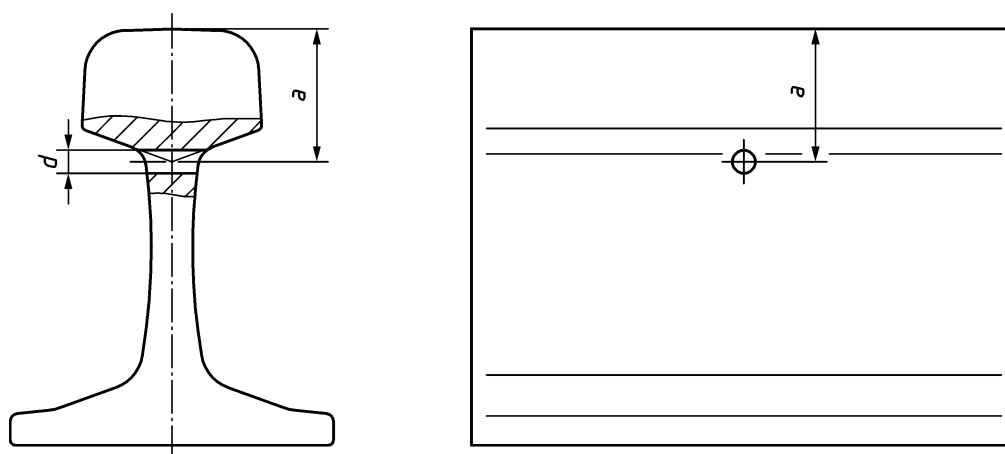
Figure A.13 — Bolt hole slot position C



Key

- a, d according to the current definition of the infrastructure manager
- l see Table 1
- w ≤ 3 mm
- 1 rail end

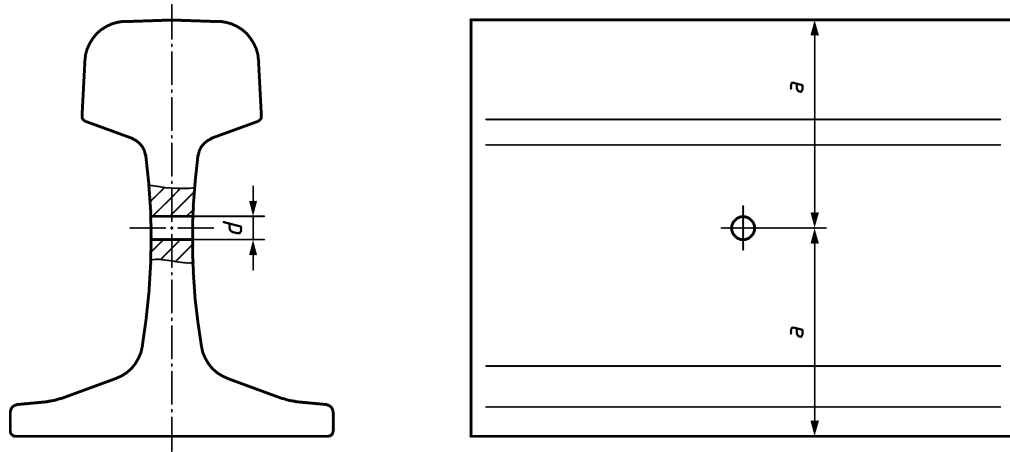
Figure A.14 — Bolt hole slot position D



Key

- a depends on rail head (see EN 13674-1)
- d see Table 1

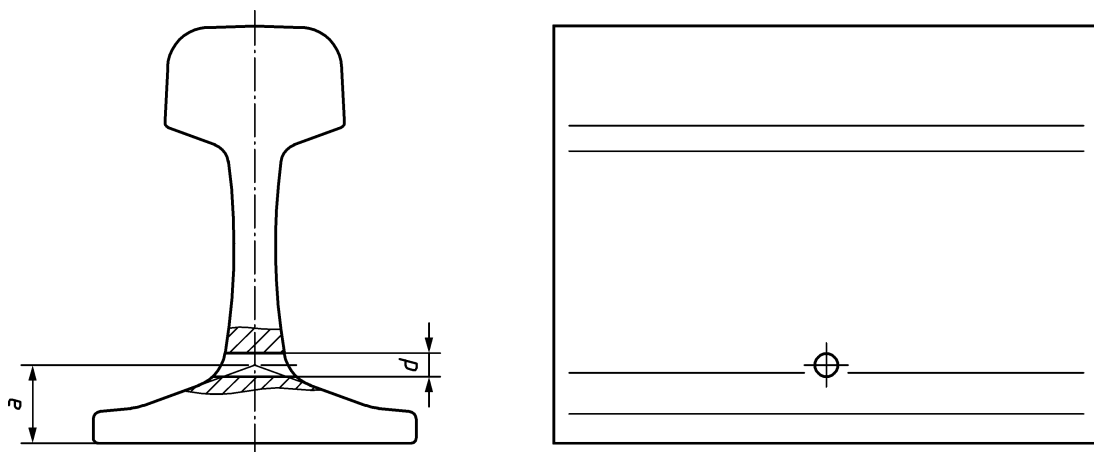
Figure A.15 — Volumetric reflector at head - web radius



Key

- a* depends on rail profile (centre line of profile)
- d* see Table 1

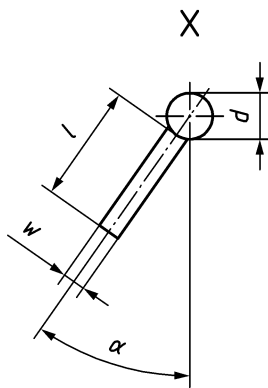
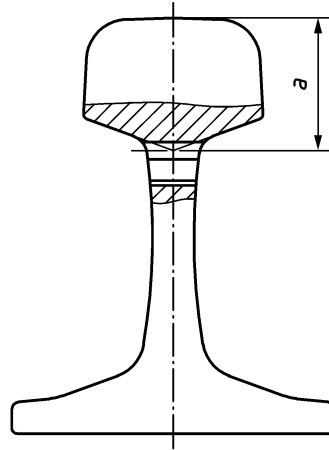
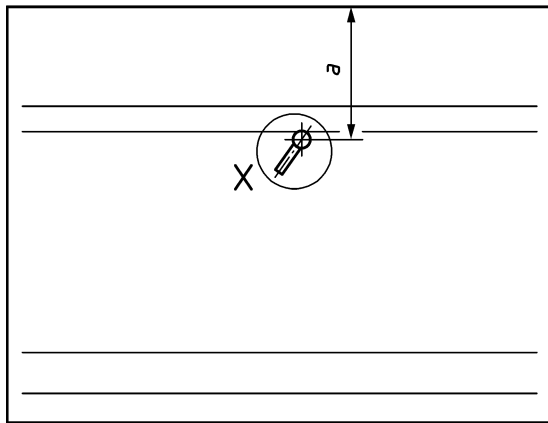
Figure A.16 — Volumetric reflector mid - web



Key

- a* depends on rail profile (see EN 13674-1)
- d* see Table 1

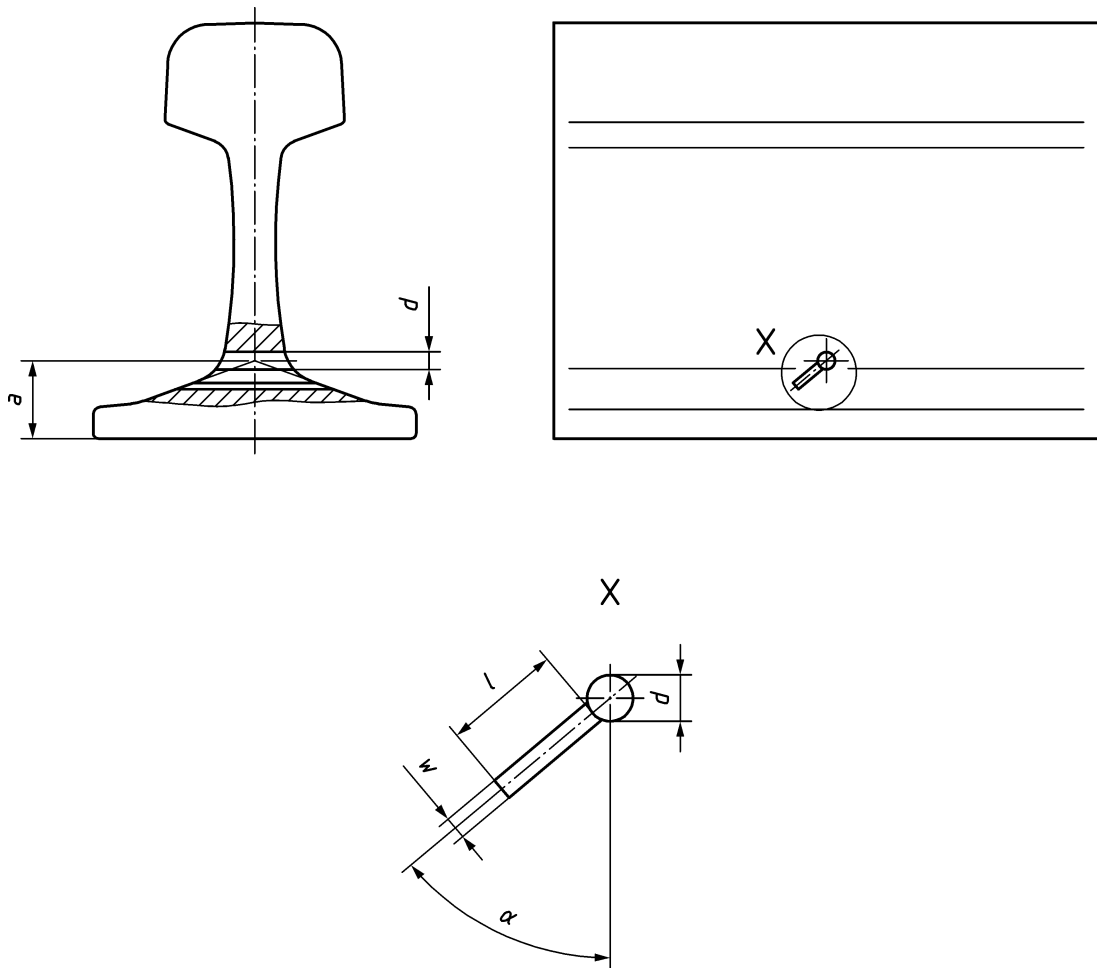
Figure A.17 — Volumetric reflector at foot - web radius



Key

- a depends on rail head (see EN 13674-1)
- d see Table 1
- α 35°
- l see Table 1
- w < 3 mm

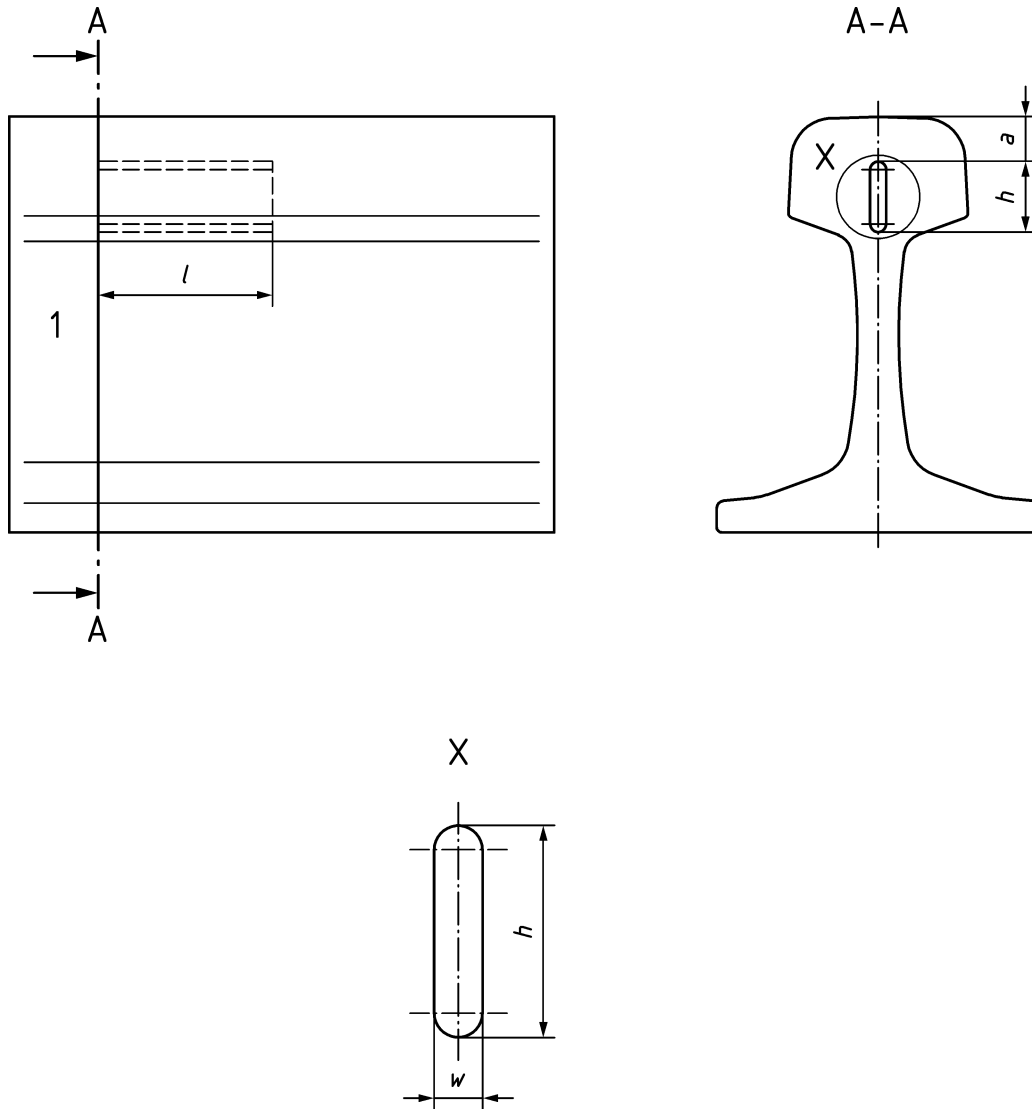
Figure A.18 — Head - web radius transverse reflector (35°)



Key

- a* depends on rail profile (see EN 13674-1)
- d* see Table 1
- α 53°
- l* see Table 1
- w* < 3 mm

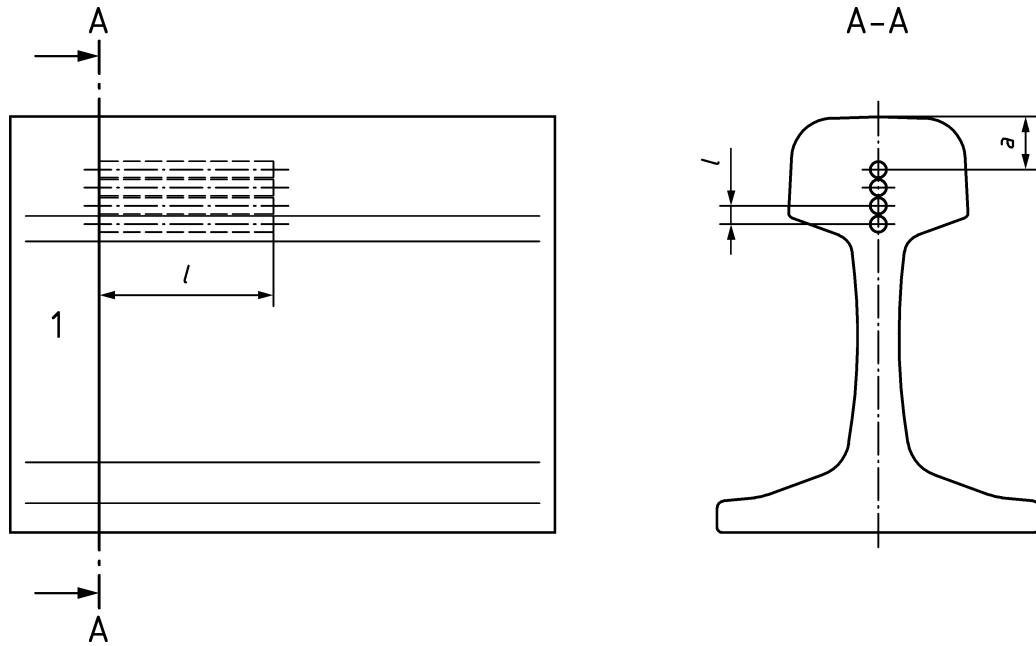
Figure A.19 — Foot - web radius transverse reflector (53°)



Key

- a* see Table 1
- h* see Table 1
- l* see Table 1
- w* 2 mm
- 1 weld

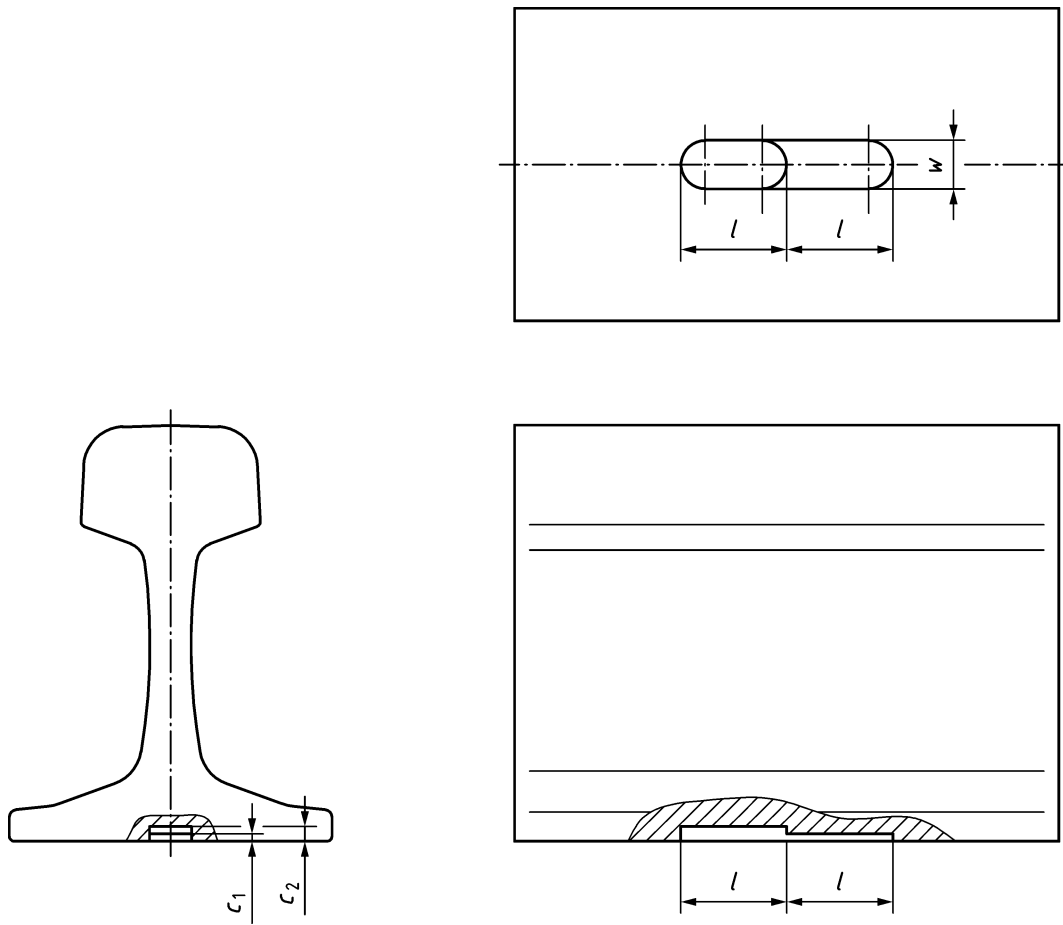
Figure A.20 — Vertical longitudinal reflector (version 1)



Key

- a* see Table 1
- d* see Table 1
- h* 6 mm (minimum 2 drills, maximum 4 drills)
- l* see Table 1
- 1 weld

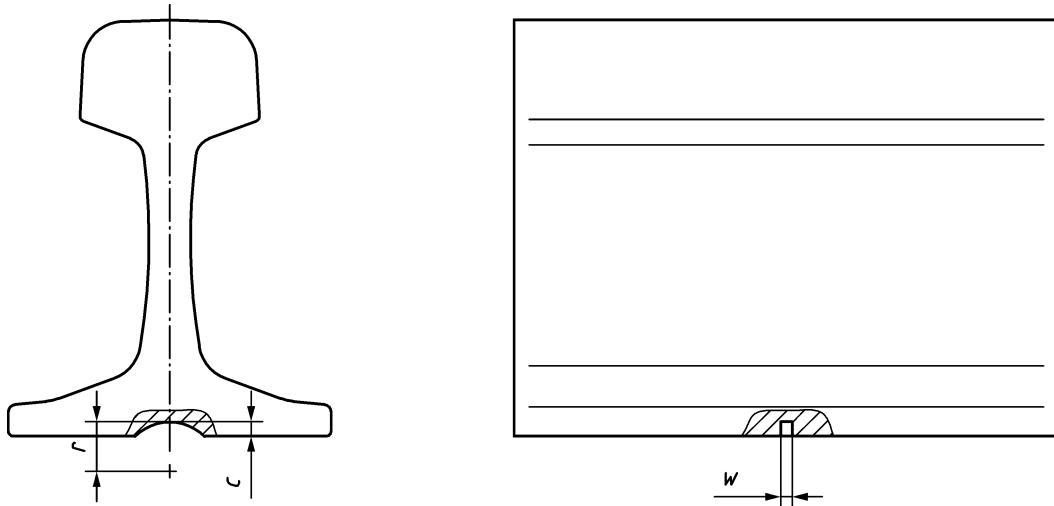
Figure A.21 — Vertical longitudinal reflector (version 2)



Key

- c_1 see Table 1
- c_2 see Table 1
- l see Table 1
- w see Table 1

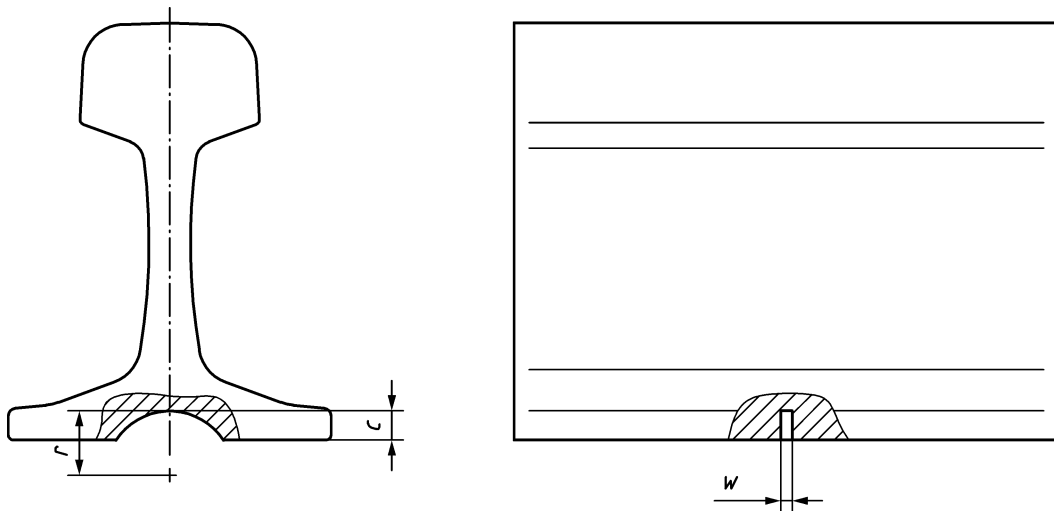
Figure A.22 — Change in rail foot depth



Key

- c* see Table 1
- r* see Table 1
- w* 2 mm

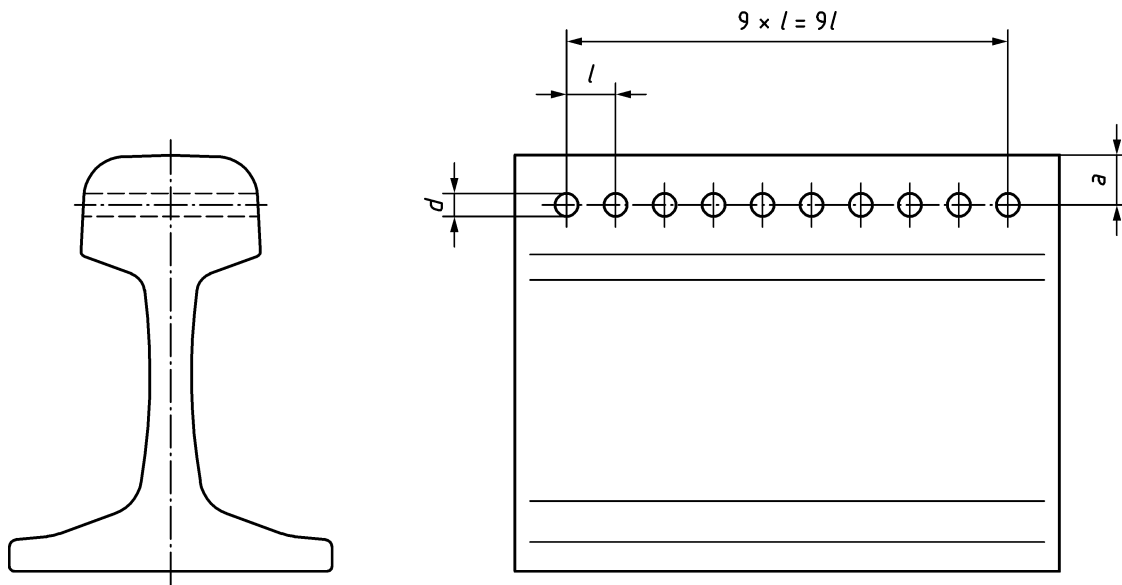
Figure A.23 — Rail foot notch 5 mm (version 1)



Key

- c* see Table 1
- r* see Table 1
- w* 2 mm

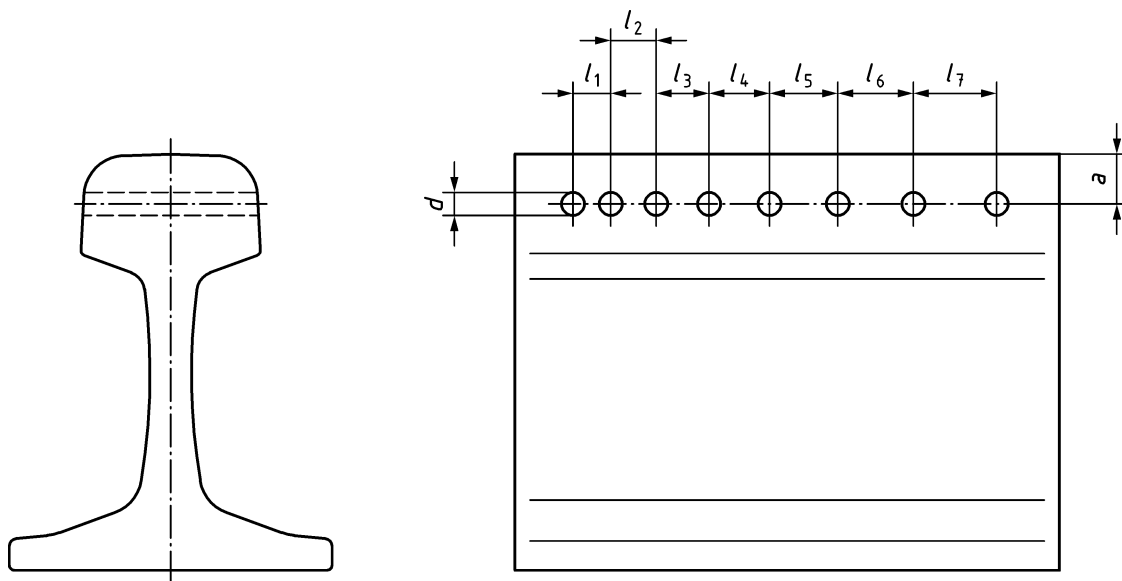
Figure A.24 — Rail foot notch 10 mm (version 1)



Key

- a* see Table 1
- d* see Table 1
- l* 222 mm

Figure A.25 — Multiple repeated reflector



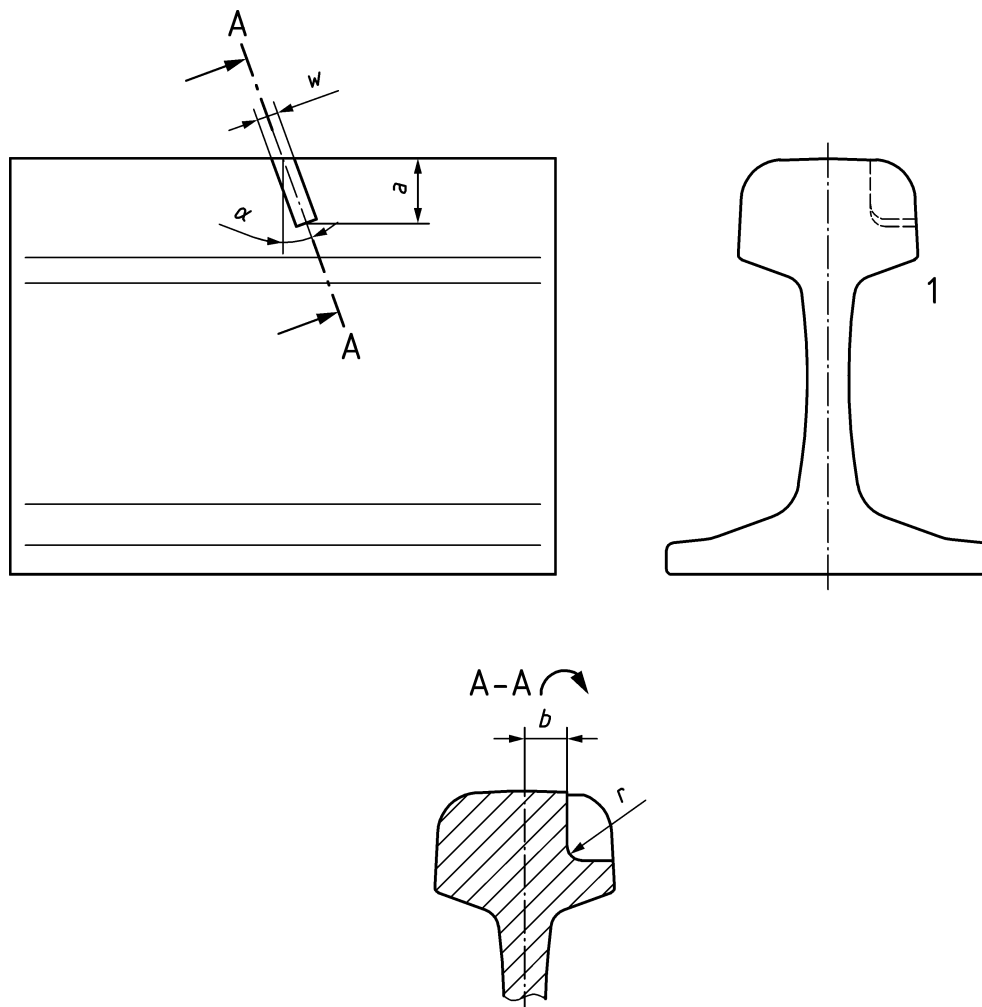
Key

- a* see Table 1
- d* see Table 1
- l₁ to l₇* see Table 1

Figure A.26 — Resolution check reflector

Annex B
(informative)

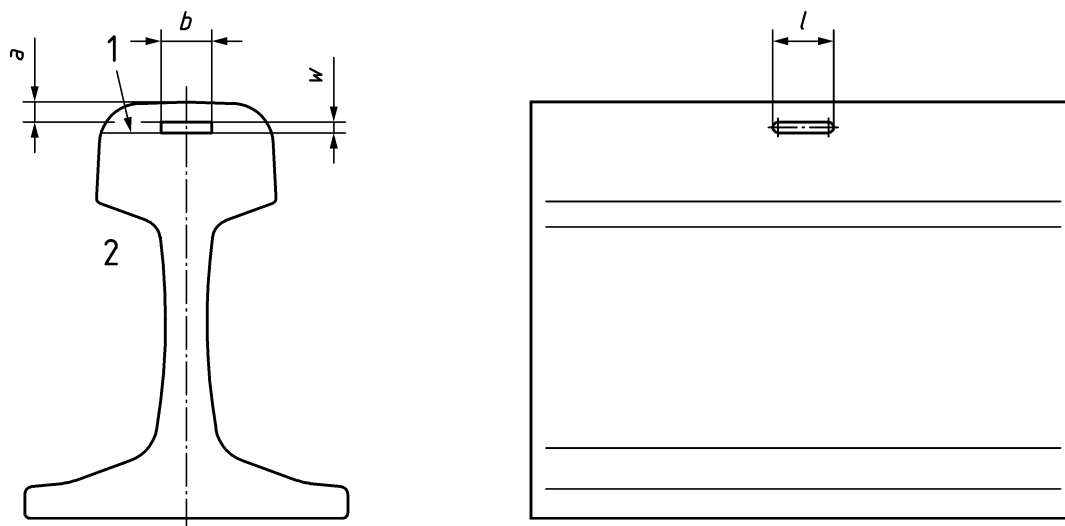
Simulated reflectors in reference rails



Key

- a see Table 2
- b see Table 2
- α 20°
- r 5 mm
- w ≤ 3 mm
- 1 gauge side of rail

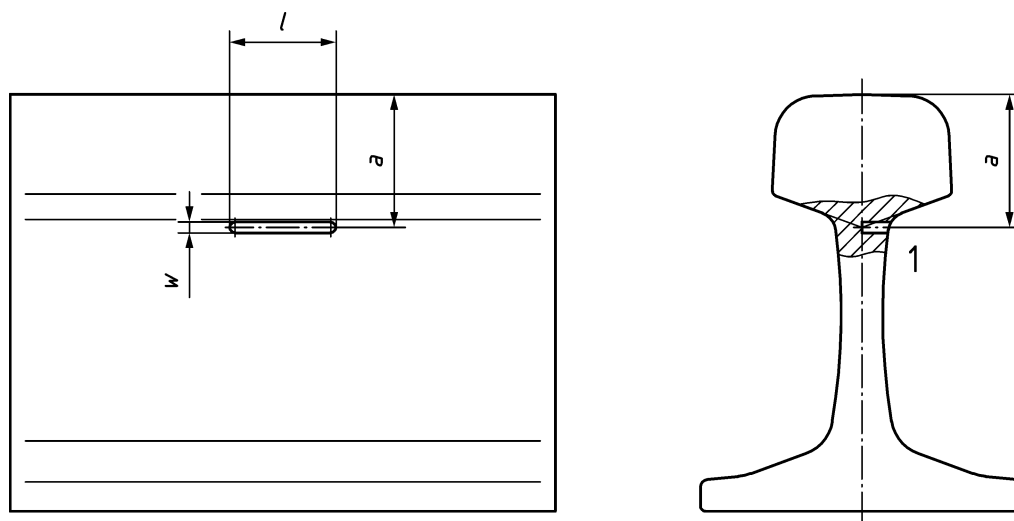
Figure B.1 — Simulated gauge corner reflector



Key

- a* see Table 2
- b* see Table 2
- l* see Table 2
- w* ≤ 3 mm
- 1 void filled with a weld
- 2 field side of rail

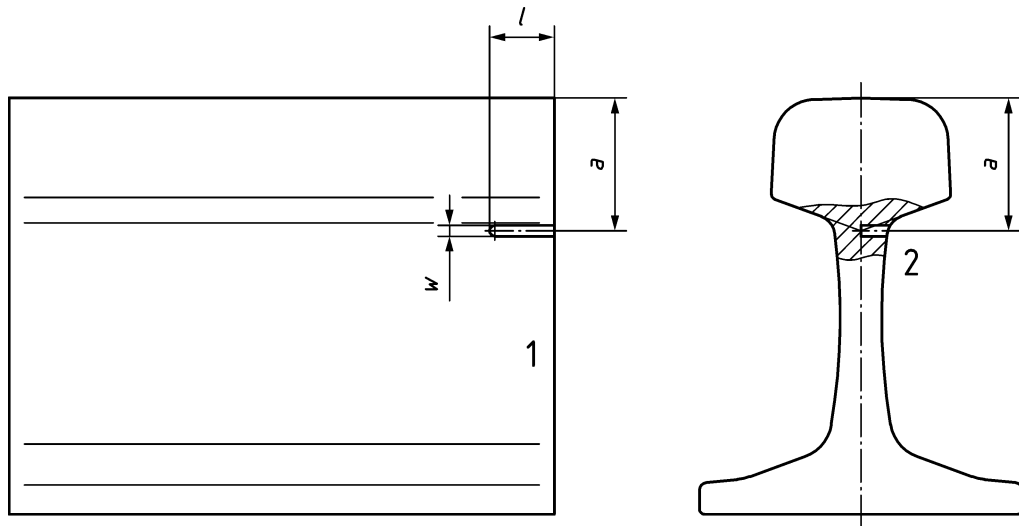
Figure B.2 — Horizontal reflector in rail head



Key

- a* depends on rail profile (see EN 13674-1)
- l* see Table 2
- w* ≤ 3 mm
- 1 either field side or gauge side of rail

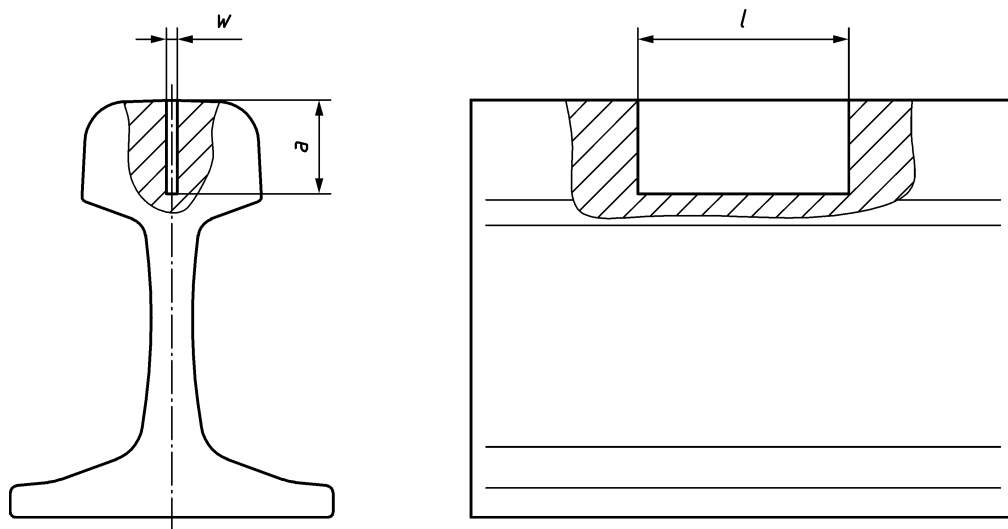
Figure B.3 — Horizontal head-web reflector (mid rail)



Key

- a* depends on rail profile (see EN 13674-1)
- l* see Table 2
- w* ≤ 3 mm
- 1 rail end
- 2 either field side or gauge side

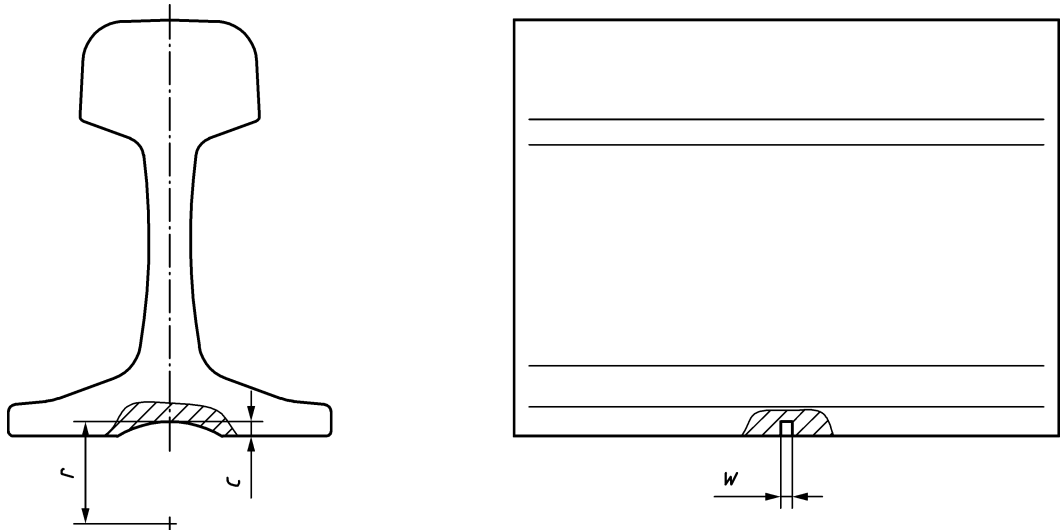
Figure B.4 — Horizontal head-web reflector (rail end)



Key

- a* see Table 2
- l* see Table 2
- w* 2 mm

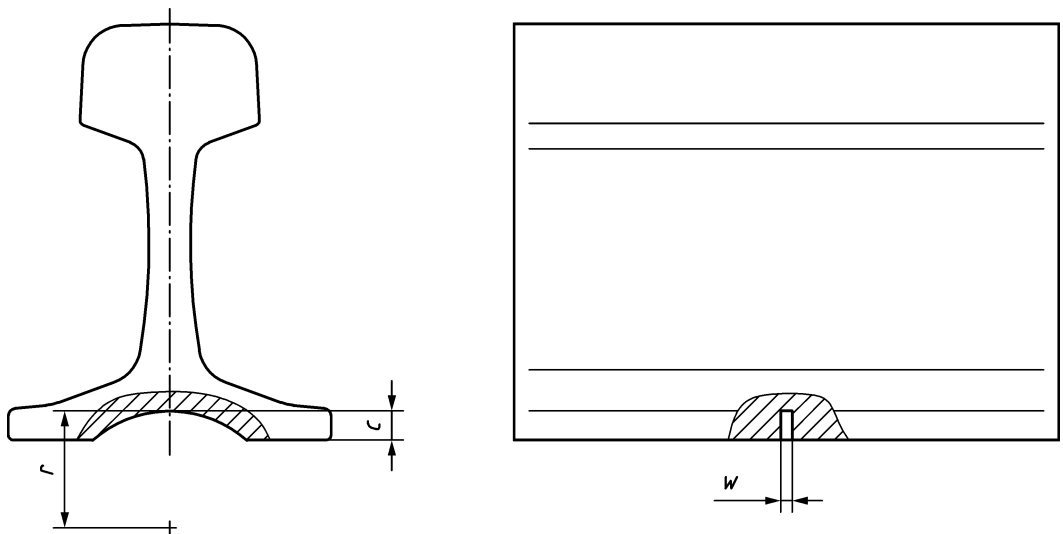
Figure B.5 — Vertical longitudinal reflector (version 3)



Key

- c* see Table 2
- r* see Table 2
- w* 2 mm

Figure B.6 — Rail foot notch 5 mm (version 2)



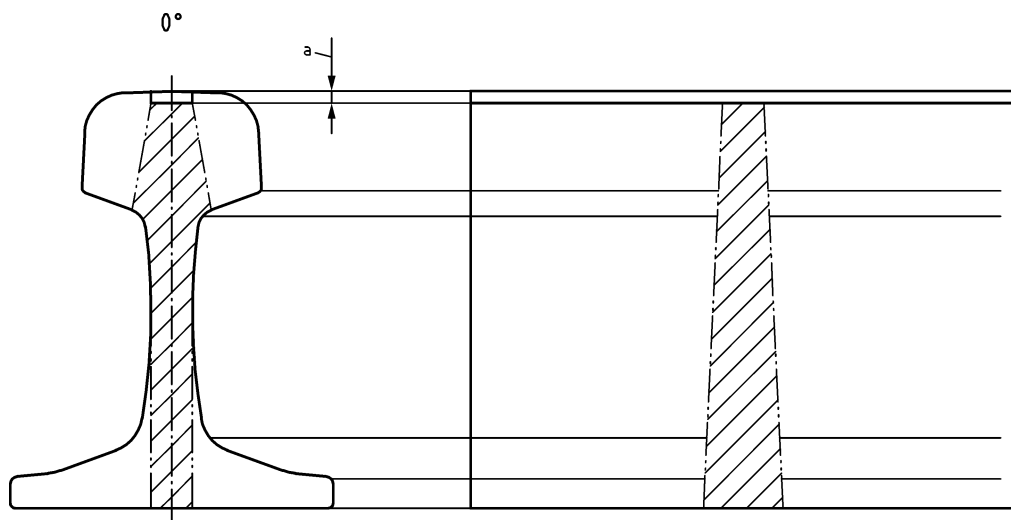
Key

- c* see Table 2
- r* see Table 2
- w* 2 mm

Figure B.7 — Rail foot notch 10 mm (version 2)

Annex C
(informative)

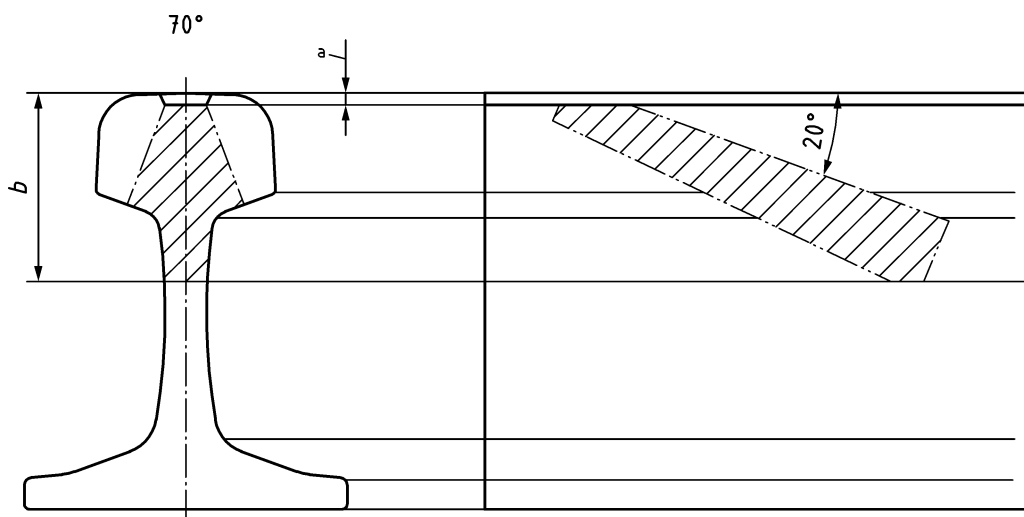
Ultrasonic test areas in rails tested with test vehicles or manually-propelled devices



Key

a non direct tested zone up to 12 mm

Figure C.1 — Ultrasonic test area for a 0° probe

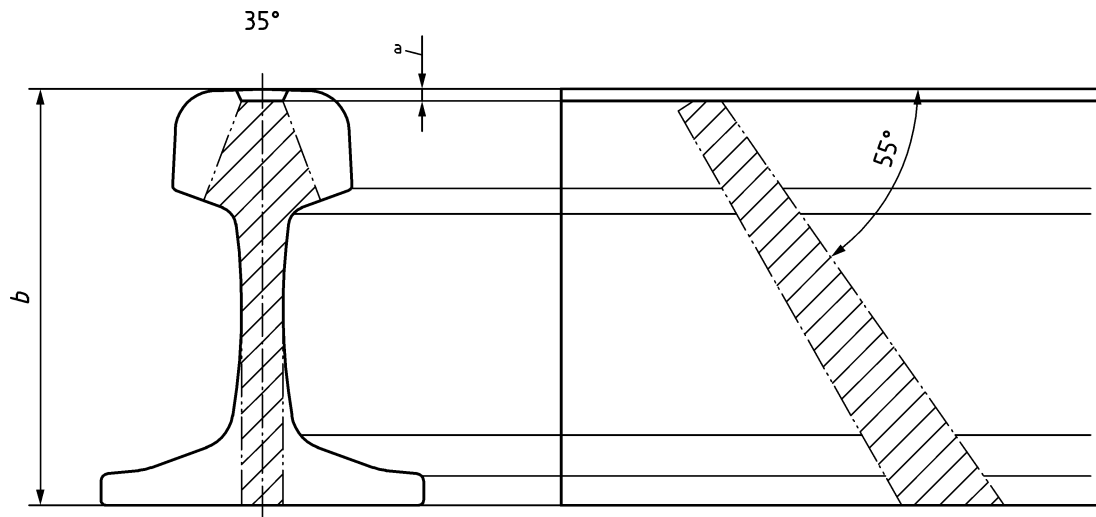


Key

a non direct tested zone 3 mm – 8 mm

b maximum tested zone with 70° probe

Figure C.2 — Ultrasonic test area for a centred 70° probe



Key

- a* non direct tested zone 3 mm– 8 mm
- b* maximum tested zone with 35° probe

Figure C.3 — Ultrasonic test area for a 35° probe

Annex ZA (informative)

Relationship between this European standard and the Essential Requirements of EU Directive 2008/57/EC

This European Standard has been prepared under a mandate given to CEN/CENELEC/ETSI by the European Commission and the European Free Trade Association to provide a means of conforming to Essential Requirements of the Directive 2008/57/EC¹⁾.

Once this standard is cited in the Official Journal of the European Union under that Directive and has been implemented as a national standard in at least one Member State, compliance with the clauses of this standard given in Table ZA confers, within the limits of the scope of this standard, a presumption of conformity with the corresponding Essential Requirements of that Directive and associated EFTA regulations.

Table ZA — Correspondence between this European Standard, Commission Regulation (EU) No 1299/2014 of 18 November 2014 on the technical specifications for interoperability relating to the ‘infrastructure’ subsystem of the rail system in the European Union, and Directive 2008/57/EC

Clause(s)/ sub clause(s) of this European Standard	Chapter/§/annexes of the TSI	Corresponding text, articles/§/annexes of Directive 2008/57/EC	Comments
Clause 4 Basics 4.1 General 4.4 Simulation of internal reflectors in reference rails Clause 5 Detection of reference reflectors Clause 6 Control of positioning accuracy Annex A Annex B	2. Definition and scope of subsystem 2.5 Relation to the safety management system 4. Description of the infrastructure subsystem 4.4. Operating rules 4.5. Maintenance rules 4.5.1. Maintenance file 4.5.2. Maintenance plan 6. Assessment of conformity of interoperability constituents and EC verification of the subsystem 6.4. Assessment of maintenance file	1. General requirements 1.1. Safety 1.1.1, 1.1.2., 1.1.3 1.2 Reliability and availability	

Warning – Other requirements and other EU Directives may be applicable to the product(s) falling within the scope of this standard.

1) This Directive 2008/57/EC adopted on 17th June 2008 is a recast of the previous Directives 96/48/EC ‘Interoperability of the trans-European high-speed rail system’ and 2001/16/EC ‘Interoperability of the trans-European conventional rail system’ and revisions thereof by 2004/50/EC ‘Corrigendum to Directive 2004/50/EC of the European Parliament and of the Council of 29 April 2004 amending Council Directive 96/48/EC on the interoperability of the trans-European high-speed rail system and Directive 2001/16/EC of the European Parliament and of the Council on the interoperability of the trans-European conventional rail system’.

Bibliography

- [1] prEN 16729-3²⁾, *Railway applications — Infrastructure — Non-destructive testing on rails in track— Part 3: Requirements for identifying internal and surface rail defects*

2) Planned.

British Standards Institution (BSI)

BSI is the national body responsible for preparing British Standards and other standards-related publications, information and services.

BSI is incorporated by Royal Charter. British Standards and other standardization products are published by BSI Standards Limited.

About us

We bring together business, industry, government, consumers, innovators and others to shape their combined experience and expertise into standards-based solutions.

The knowledge embodied in our standards has been carefully assembled in a dependable format and refined through our open consultation process. Organizations of all sizes and across all sectors choose standards to help them achieve their goals.

Information on standards

We can provide you with the knowledge that your organization needs to succeed. Find out more about British Standards by visiting our website at bsigroup.com/standards or contacting our Customer Services team or Knowledge Centre.

Buying standards

You can buy and download PDF versions of BSI publications, including British and adopted European and international standards, through our website at bsigroup.com/shop, where hard copies can also be purchased.

If you need international and foreign standards from other Standards Development Organizations, hard copies can be ordered from our Customer Services team.

Copyright in BSI publications

All the content in BSI publications, including British Standards, is the property of and copyrighted by BSI or some person or entity that owns copyright in the information used (such as the international standardization bodies) and has formally licensed such information to BSI for commercial publication and use.

Save for the provisions below, you may not transfer, share or disseminate any portion of the standard to any other person. You may not adapt, distribute, commercially exploit, or publicly display the standard or any portion thereof in any manner whatsoever without BSI's prior written consent.

Storing and using standards

Standards purchased in soft copy format:

- A British Standard purchased in soft copy format is licensed to a sole named user for personal or internal company use only.
- The standard may be stored on more than 1 device provided that it is accessible by the sole named user only and that only 1 copy is accessed at any one time.
- A single paper copy may be printed for personal or internal company use only.

Standards purchased in hard copy format:

- A British Standard purchased in hard copy format is for personal or internal company use only.
- It may not be further reproduced – in any format – to create an additional copy. This includes scanning of the document.

If you need more than 1 copy of the document, or if you wish to share the document on an internal network, you can save money by choosing a subscription product (see 'Subscriptions').

Reproducing extracts

For permission to reproduce content from BSI publications contact the BSI Copyright & Licensing team.

Subscriptions

Our range of subscription services are designed to make using standards easier for you. For further information on our subscription products go to bsigroup.com/subscriptions.

With **British Standards Online (BSOL)** you'll have instant access to over 55,000 British and adopted European and international standards from your desktop. It's available 24/7 and is refreshed daily so you'll always be up to date.

You can keep in touch with standards developments and receive substantial discounts on the purchase price of standards, both in single copy and subscription format, by becoming a **BSI Subscribing Member**.

PLUS is an updating service exclusive to BSI Subscribing Members. You will automatically receive the latest hard copy of your standards when they're revised or replaced.

To find out more about becoming a BSI Subscribing Member and the benefits of membership, please visit bsigroup.com/shop.

With a **Multi-User Network Licence (MUNL)** you are able to host standards publications on your intranet. Licences can cover as few or as many users as you wish. With updates supplied as soon as they're available, you can be sure your documentation is current. For further information, email subscriptions@bsigroup.com.

Revisions

Our British Standards and other publications are updated by amendment or revision.

We continually improve the quality of our products and services to benefit your business. If you find an inaccuracy or ambiguity within a British Standard or other BSI publication please inform the Knowledge Centre.

Useful Contacts

Customer Services

Tel: +44 345 086 9001

Email (orders): orders@bsigroup.com

Email (enquiries): cservices@bsigroup.com

Subscriptions

Tel: +44 345 086 9001

Email: subscriptions@bsigroup.com

Knowledge Centre

Tel: +44 20 8996 7004

Email: knowledgecentre@bsigroup.com

Copyright & Licensing

Tel: +44 20 8996 7070

Email: copyright@bsigroup.com

BSI Group Headquarters

389 Chiswick High Road London W4 4AL UK