

Railway applications — Designation system for railway vehicles —

Part 3: Designation of installation sites and locations

The European Standard EN 15380-3:2006 has the status of a
British Standard

ICS 01 110; 45.060.01

National foreword

This British Standard is the official English language version of EN 15380-3:2006.

The UK participation in its preparation was entrusted to Technical Committee RAE/1, Railway applications, which has the responsibility to:

- aid enquirers to understand the text;
- present to the responsible international/European committee any enquiries on the interpretation, or proposals for change, and keep UK interests informed;
- monitor related international and European developments and promulgate them in the UK.

A list of organizations represented on this committee can be obtained on request to its secretary.

This standard has been produced from Part 4 of the DIN 25002 series of standards under the CEN fast-track procedure. The UK voted against the document in both associated ballots stating that the translation of the documents from German to prepare the English version has resulted in a lack of clarity as to the intent and meaning of some of the terminology used. There is a concern that some of the railway-related terminology used does not correspond to UK usage. Therefore, this standard should be applied with care and consideration in order to avoid misunderstanding.

Cross-references

The British Standards which implement international or European publications referred to in this document may be found in the *BSI Catalogue* under the section entitled “International Standards Correspondence Index”, or by using the “Search” facility of the *BSI Electronic Catalogue* or of British Standards Online.

This publication does not purport to include all the necessary provisions of a contract. Users are responsible for its correct application.

Compliance with a British Standard does not of itself confer immunity from legal obligations.

Summary of pages

This document comprises a front cover, an inside front cover, the EN title page, pages 2 to 12, an inside back cover and a back cover.

The BSI copyright notice displayed in this document indicates when the document was last issued.

This British Standard was published under the authority of the Standards Policy and Strategy Committee on 31 July 2006

© BSI 2006

ISBN 0 580 48946 9

Amendments issued since publication

Amd. No.	Date	Comments

ICS 01.110; 45.060.01

English Version

Railway applications - Designation system for railway vehicles - Part 3: Designation of installation sites and locations

Applications ferroviaires - Système de classification pour
véhicules ferroviaires - Partie 3: Description des positions
d'installation

Bahnanwendungen - Kennzeichnungssystematik für
Schienenfahrzeuge - Teil 3: Kennzeichnung von
Aufstellungs- und Einbauorten

This European Standard was approved by CEN on 6 March 2006.

CEN members are bound to comply with the CEN/CENELEC Internal Regulations which stipulate the conditions for giving this European Standard the status of a national standard without any alteration. Up-to-date lists and bibliographical references concerning such national standards may be obtained on application to the Central Secretariat or to any CEN member.

This European Standard exists in three official versions (English, French, German). A version in any other language made by translation under the responsibility of a CEN member into its own language and notified to the Central Secretariat has the same status as the official versions.

CEN members are the national standards bodies of Austria, Belgium, Cyprus, Czech Republic, Denmark, Estonia, Finland, France, Germany, Greece, Hungary, Iceland, Ireland, Italy, Latvia, Lithuania, Luxembourg, Malta, Netherlands, Norway, Poland, Portugal, Romania, Slovakia, Slovenia, Spain, Sweden, Switzerland and United Kingdom.



EUROPEAN COMMITTEE FOR STANDARDIZATION
COMITÉ EUROPÉEN DE NORMALISATION
EUROPÄISCHES KOMITEE FÜR NORMUNG

Management Centre: rue de Stassart, 36 B-1050 Brussels

Contents

Page

Foreword.....3

Introduction4

1 Scope4

2 Normative references4

3 Terms and definitions4

4 Designation of installation sites.....4

4.1 General.....4

4.2 Designation set5

5 Designation of locations6

5.1 General.....6

5.2 Designation set6

Annex A (informative) Examples of installation site and location designation.....9

Bibliography12

List of Tables

Table 1 — Location subdivision..... 8

List of Figures

Figure 1 — Designation principle..... 5

Figure 2 — Example of installation site vehicle designation 5

Figure 3 — Location designation principle 6

Figure 4 — Example of a location designation 7

Figure 5 — Example of a location designation with product group and location given 7

Figure A.1 — Examples of installation site and location designation 9

Figure A.2 — Designation of locations on a locomotive 10

Figure A.3 — Designation of locations on a 3-compartment suburban vehicle 11

Foreword

This document (EN 15380-3:2006) has been prepared by Technical Committee CEN/TC 256 "Railway applications", the secretariat of which is held by DIN.

This European Standard shall be given the status of a national standard, either by publication of an identical text or by endorsement, at the latest by October 2006, and conflicting national standards shall be withdrawn at the latest by October 2006.

The EN 15380 series of standards, *Railway applications – Designation system for railway vehicles* consists of:

- *Part 1: General principles*
- *Part 2: Product groups*
- *Part 3: Designation of installation sites and locations*

This European Standard is based on Part 4 of the DIN 25002 series of standards. After approval, the text of DIN 25002-4 submitted to the PQ procedure was brought into line with the formal requirements of an EN. The resulting editorial amendments have led to slightly modified wordings but they have no effect on the technical content of this document.

According to the CEN/CENELEC Internal Regulations, the national standards organizations of the following countries are bound to implement this European Standard: Austria, Belgium, Cyprus, Czech Republic, Denmark, Estonia, Finland, France, Germany, Greece, Hungary, Iceland, Ireland, Italy, Latvia, Lithuania, Luxembourg, Malta, Netherlands, Norway, Poland, Portugal, Romania, Slovakia, Slovenia, Spain, Sweden, Switzerland and the United Kingdom.

Introduction

Giving the location designations is necessary in order to systematize installation planning and to provide traceability of vehicle parts, structural units, combined assemblies and objects.

1 Scope

As a railway-specific technical standard, this document gives rules for the designation of installation sites and locations in railway vehicles.

2 Normative references

The following referenced documents are indispensable for the application of this European Standard. For dated references, only the edition cited applies. For undated references, the latest edition of the referenced document (including any amendments) applies.

EN 15380-1:2006, *Railway applications — Designation system for railway vehicles — Part 1: General principles*

EN 15380-2, *Railway applications — Designation system for railway vehicles — Part 2: Product groups*

3 Terms and definitions

For the purposes of this document, the terms given in EN 15380-1:2006 apply.

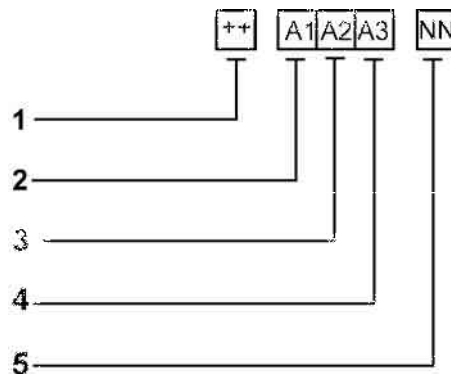
4 Designation of installation sites

4.1 General

This designation gives information concerning the position of a unit, a vehicle or an assembly in a fixed train configuration.

4.2 Designation set

Figure 1 shows the layout of the designation set. It consists of the prefix signs "++" followed by three code letters and two code numbers for the position inside a fixed train configuration.



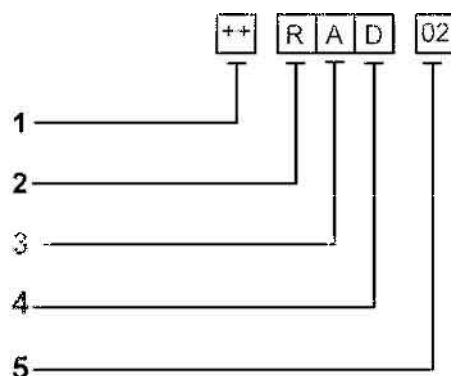
Key

- 1 Installation site prefix sign
- 2 Designation of railway vehicles
- 3 Designation of train (vehicle fleet)
- 4 Designation of vehicle type
- 5 Position within the train (only required if identical vehicles exist within a train)

Figure 1 — Designation principle

Examples of the data positions A1, A2 and A3 are given in Annex A of EN 15380-1:2006.

Figure 2 shows an example of a designation of one of several identical vehicles in a train configuration as indicated in Figure A.1.



Key

- 1 Installation site prefix sign
- 2 "Rolling Stock" vehicle fleet
- 3 High-speed train
- 4 Centre car (vehicle type)
- 5 Vehicle No.02 in the train

Figure 2 — Example of installation site vehicle designation

Annex A gives examples of the numbering system of installation sites and locations.

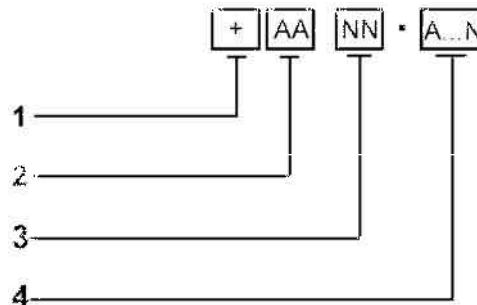
5 Designation of locations

5.1 General

This designation gives information concerning the location of structural units, combined assemblies and objects in vehicles, structural units and assemblies.

5.2 Designation set

Figure 3 shows the layout of the designation set. It consists of the prefix sign "+" followed by two code letters for the product group, two code numbers (location), a classification mark and a further possibility for designating the location. It is not required in every case to indicate the product group. Examples are shown in Figures 4 and 5.

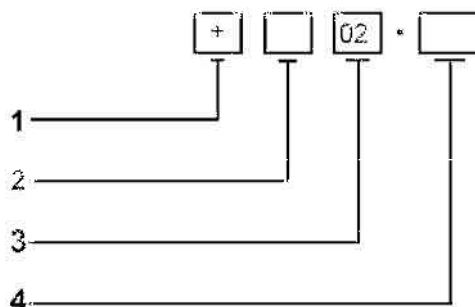


Key

- 1 Location prefix sign
- 2 Product group plan according to EN 15380-2
- 3 Subdivision of the locations in a vehicle (see Table 1)
- 4 Designation of the locations in combined assemblies, structural units and objects (areas and/or co-ordinates) not specified

Figure 3 — Location designation principle

Figure 4 shows an example of the minimum entry for a location designation

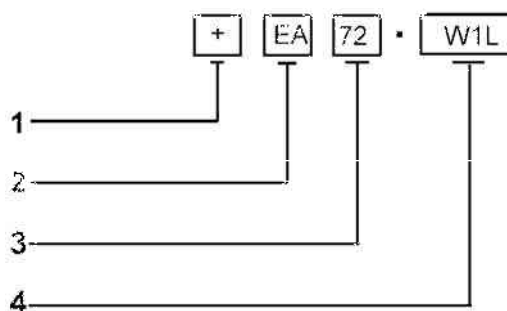


Key

- 1 Location prefix sign
- 2 Pantograph
- 3 Location on the roof (see Table 1)
- 4 Location

Figure 4 — Example of a location designation

Figure 5 shows an example of a complete location designation.



Key

- 1 Location prefix sign
- 2 Running gear from EN 15380-2
- 3 Underframe location (see Table 1)
- 4 Location in running gear (W1L = wheelset shaft 1 left-hand side)

Figure 5 — Example of a location designation with product group and location given

The corresponding numbers for designating the locations are specified in Table 1.

The figures in the Annex are intended to clarify matters for different railway vehicles.

Table 1 — Location subdivision

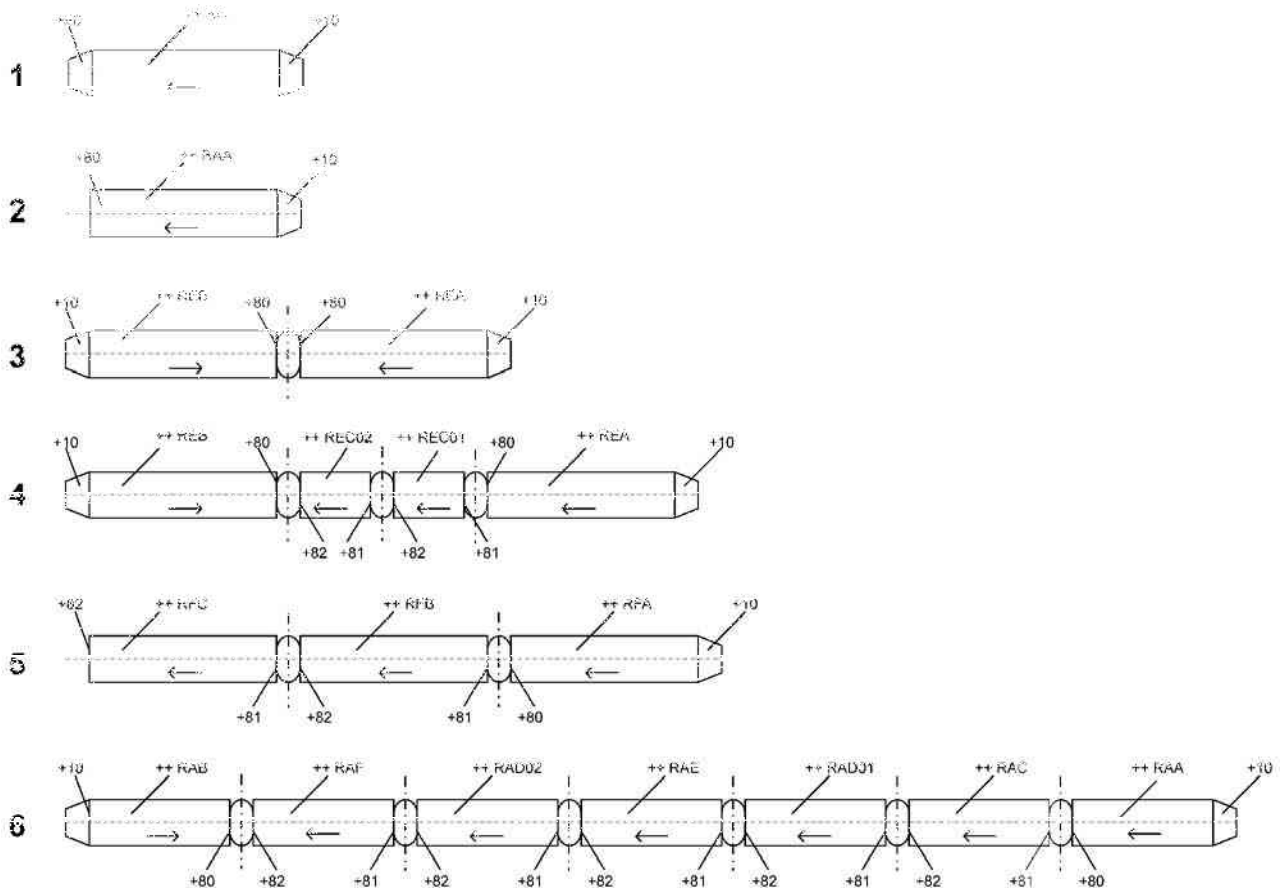
Main group	Subdivision	Name of the location
00		Roof, outside
	01 to 09	Roof, outside; subdivision according to the situation
10		Driver's cab
	11	Driver's desk
	12	Cubicle in the driver's cab, left-hand side
	13	Cubicle in the driver's cab, right-hand side
10	14	Driver's cab, rear wall, left-hand side
	15	Driver's cab, rear wall, right-hand side
	16	Driver's cab, floor
	17	Driver's cab, ceiling
	18	Vehicle head, left-hand side
	19	Vehicle head, right-hand side
20		Side wall, right-hand side (with cove)
	21 to 29	Subdivision according to the situation (e.g. windows)
30		Side wall, left-hand side (with cove)
	31 to 39	Subdivision according to the situation
40		Interior, right-hand side
	41 to 49	Subdivision according to the situation
50		Interior, left-hand side
	51 to 59	Subdivision according to the situation
60		Interior ceiling
	61 to 69	Subdivision according to the situation, e.g. intermediate ceiling in double-decker coaches
70		Underframe (framework of a locomotive)
	71 to 79	Subdivision according to the situation
80		End wall, rear wall, intercommunication gangway, driver's cab 2 of single-unit vehicles (e.g. in locomotives)
	81 to 89	Subdivision according to the situation
90		Reserved

Annex A (informative)

Examples of installation site and location designation

Figure A.1 shows the designation of the installation site and location in various trains.

The direction of travel of the vehicles is shown in accordance with EN 13775-1.



Key

- 1 Locomotive, 2 driver's cabs
- 2 Traction unit head, 1 driver's cab
- 3 Traction unit, 2 driver's cabs
- 4 Traction unit, 4-compartment
- 5 Suburban train, underground train
- 6 High-speed train (ICT)
- ← Direction of counting

Figure A.1 — Examples of installation site and location designation

Other examples of installation site and location designation are given in Figures A.2 and A.3.

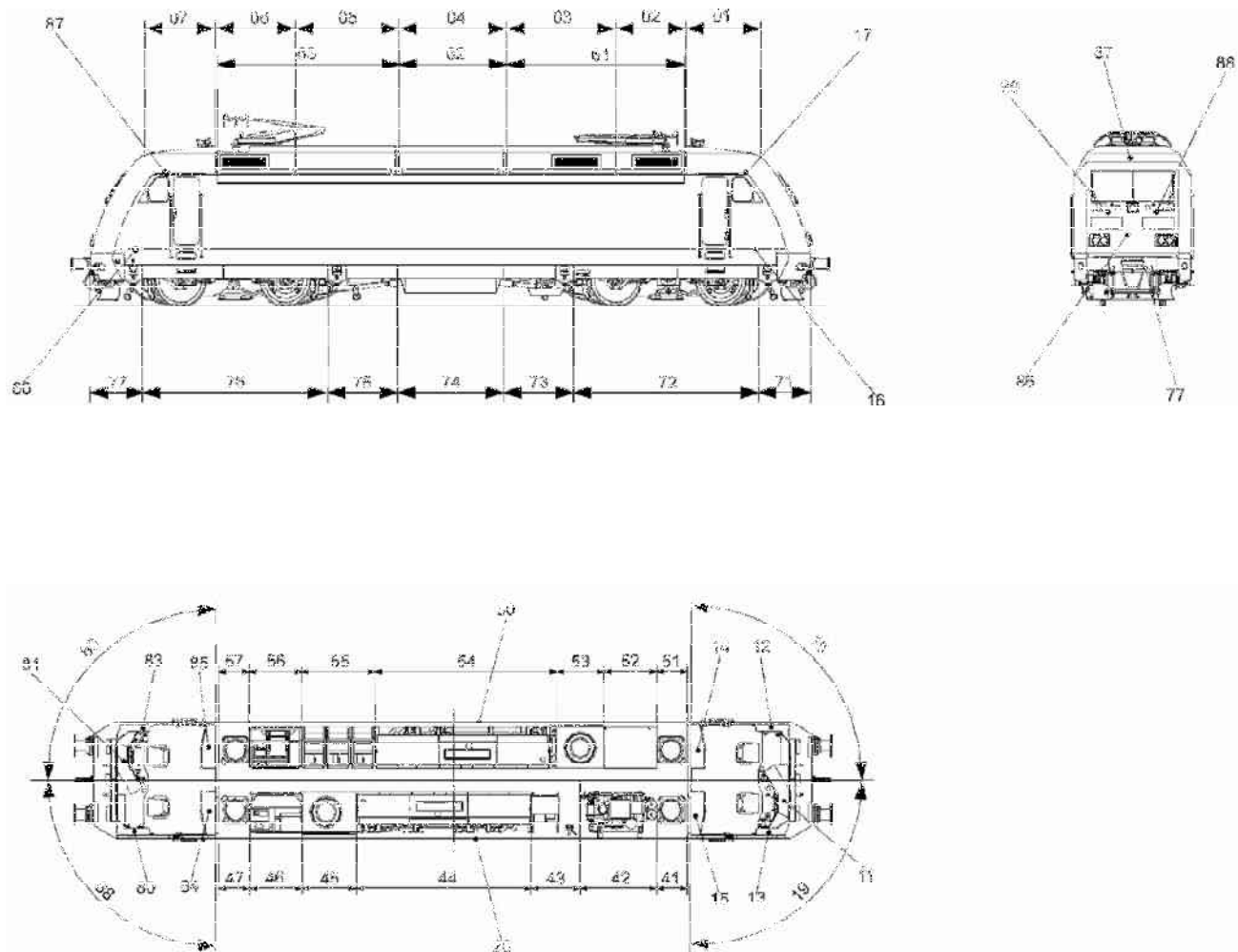


Figure A.2 — Designation of locations on a locomotive

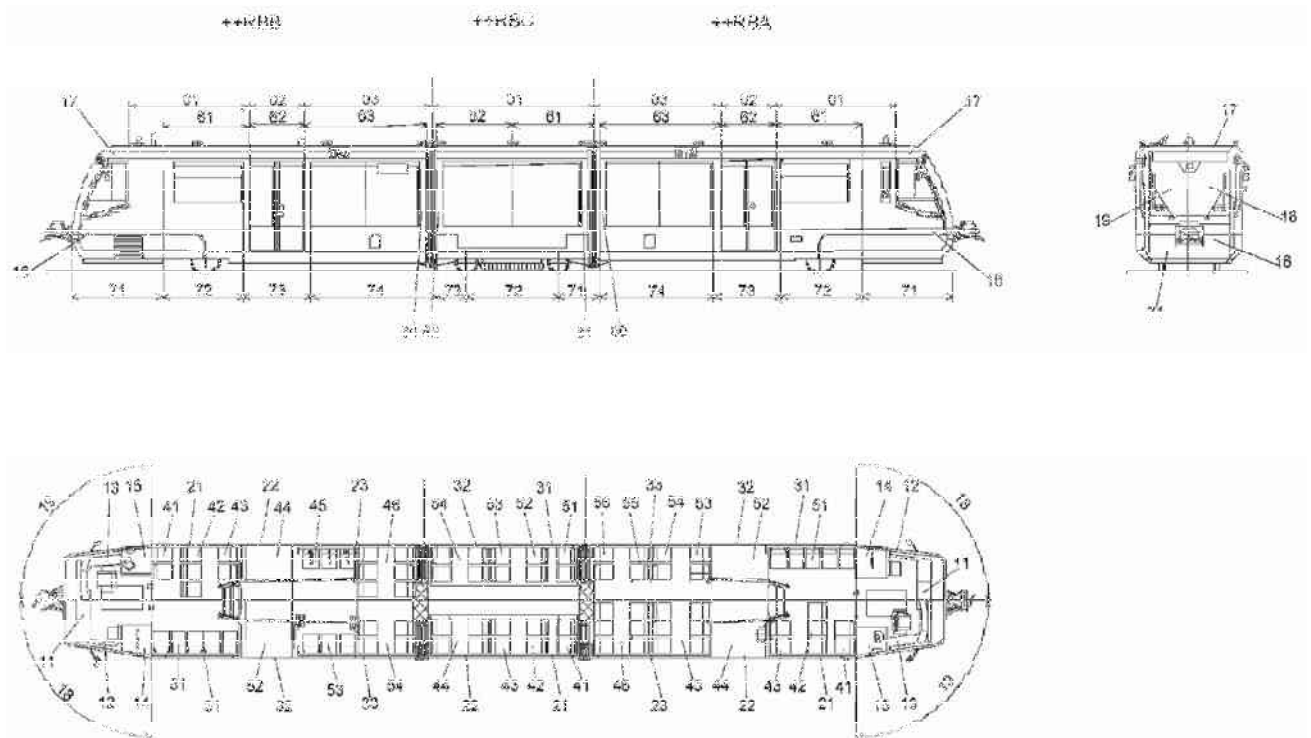


Figure A.3 — Designation of locations on a 3-compartment suburban vehicle

Bibliography

- [1] EN 13775-1, *Railway applications — Measuring of new and modified freight wagons - Part 1: Measuring principles*

BSI — British Standards Institution

BSI is the independent national body responsible for preparing British Standards. It presents the UK view on standards in Europe and at the international level. It is incorporated by Royal Charter.

Revisions

British Standards are updated by amendment or revision. Users of British Standards should make sure that they possess the latest amendments or editions.

It is the constant aim of BSI to improve the quality of our products and services. We would be grateful if anyone finding an inaccuracy or ambiguity while using this British Standard would inform the Secretary of the technical committee responsible, the identity of which can be found on the inside front cover. Tel: +44 (0)20 8996 9000. Fax: +44 (0)20 8996 7400.

BSI offers members an individual updating service called PLUS which ensures that subscribers automatically receive the latest editions of standards.

Buying standards

Orders for all BSI, international and foreign standards publications should be addressed to Customer Services. Tel: +44 (0)20 8996 9001. Fax: +44 (0)20 8996 7001. Email: orders@bsi-global.com. Standards are also available from the BSI website at <http://www.bsi-global.com>.

In response to orders for international standards, it is BSI policy to supply the BSI implementation of those that have been published as British Standards, unless otherwise requested.

Information on standards

BSI provides a wide range of information on national, European and international standards through its Library and its Technical Help to Exporters Service. Various BSI electronic information services are also available which give details on all its products and services. Contact the Information Centre. Tel: +44 (0)20 8996 7111. Fax: +44 (0)20 8996 7048. Email: info@bsi-global.com.

Subscribing members of BSI are kept up to date with standards developments and receive substantial discounts on the purchase price of standards. For details of these and other benefits contact Membership Administration. Tel: +44 (0)20 8996 7002. Fax: +44 (0)20 8996 7001. Email: membership@bsi-global.com.

Information regarding online access to British Standards via British Standards Online can be found at <http://www.bsi-global.com/bsonline>.

Further information about BSI is available on the BSI website at <http://www.bsi-global.com>.

Copyright

Copyright subsists in all BSI publications. BSI also holds the copyright, in the UK, of the publications of the international standardization bodies. Except as permitted under the Copyright, Designs and Patents Act 1988 no extract may be reproduced, stored in a retrieval system or transmitted in any form or by any means – electronic, photocopying, recording or otherwise – without prior written permission from BSI.

This does not preclude the free use, in the course of implementing the standard, of necessary details such as symbols, and size, type or grade designations. If these details are to be used for any other purpose than implementation then the prior written permission of BSI must be obtained.

Details and advice can be obtained from the Copyright & Licensing Manager. Tel: +44 (0)20 8996 7070. Fax: +44 (0)20 8996 7553. Email: copyright@bsi-global.com.