

BS EN 14528:2015



BSI Standards Publication

Bidets — Functional requirements and test methods

bsi.

...making excellence a habit.™

National foreword

This British Standard is the UK implementation of EN 14528:2015. It supersedes BS EN 14528:2007 which is withdrawn.

The UK participation in its preparation was entrusted to Technical Committee B/503, Sanitary appliances.

A list of organizations represented on this committee can be obtained on request to its secretary.

This publication does not purport to include all the necessary provisions of a contract. Users are responsible for its correct application.

© The British Standards Institution 2015. Published by BSI Standards Limited 2015

ISBN 978 0 580 87731 5

ICS 91.140.70

Compliance with a British Standard cannot confer immunity from legal obligations.

This British Standard was published under the authority of the Standards Policy and Strategy Committee on 31 July 2015.

Amendments issued since publication

Date	Text affected
------	---------------

EUROPEAN STANDARD

EN 14528

NORME EUROPÉENNE

EUROPÄISCHE NORM

July 2015

ICS 91.140.70

Supersedes EN 14528:2007

English Version

Bidets - Functional requirements and test methods

Bidets - Exigences fonctionnelles et méthodes d'essai

Sitzwaschbecken - Funktionsanforderungen und
Prüfverfahren

This European Standard was approved by CEN on 19 June 2015.

CEN members are bound to comply with the CEN/CENELEC Internal Regulations which stipulate the conditions for giving this European Standard the status of a national standard without any alteration. Up-to-date lists and bibliographical references concerning such national standards may be obtained on application to the CEN-CENELEC Management Centre or to any CEN member.

This European Standard exists in three official versions (English, French, German). A version in any other language made by translation under the responsibility of a CEN member into its own language and notified to the CEN-CENELEC Management Centre has the same status as the official versions.

CEN members are the national standards bodies of Austria, Belgium, Bulgaria, Croatia, Cyprus, Czech Republic, Denmark, Estonia, Finland, Former Yugoslav Republic of Macedonia, France, Germany, Greece, Hungary, Iceland, Ireland, Italy, Latvia, Lithuania, Luxembourg, Malta, Netherlands, Norway, Poland, Portugal, Romania, Slovakia, Slovenia, Spain, Sweden, Switzerland, Turkey and United Kingdom.



EUROPEAN COMMITTEE FOR STANDARDIZATION
COMITÉ EUROPÉEN DE NORMALISATION
EUROPÄISCHES KOMITEE FÜR NORMUNG

CEN-CENELEC Management Centre: Avenue Marnix 17, B-1000 Brussels

Contents

Page

European foreword	3
1 Scope	4
2 Normative references	4
3 Terms and definitions	4
4 Requirements	5
4.1 Connecting dimensions	5
4.2 Load stability	5
4.3 Cleanability	5
4.4 Protection against overflowing	5
4.4.1 Bidets with overflow	5
4.4.2 Bidets without overflow	6
4.5 Durability	6
5 Test methods	6
5.1 General	6
5.2 Static load test	6
5.3 Cleanability	7
5.4 Determination of flow rate of overflow	8
6 Dangerous substances	8
7 Marking	8
8 Assessment and verification of constancy of performance – AVCP	9
8.1 General	9
8.2 Type testing	10
8.2.1 General	10
8.2.2 Test samples, testing and compliance criteria	10
8.3 Factory production control (FPC)	11
8.3.1 General	11
8.3.2 Equipment	11
8.3.3 Raw materials and components	11
8.3.4 Product testing and assessment	11
8.3.5 Non-complying products	12
8.3.6 Corrective action	12
Annex ZA (informative) Clauses of this European Standard addressing the provisions of the EU Construction Products Regulation	13
ZA.1 Scope and relevant characteristics	13
ZA.2 Procedure for assessment and verification of constancy of performance (AVCP) of bidets.....	14
ZA.2.1 System of AVCP	14
ZA.2.2 Declaration of performance (DoP)	14
ZA.3 CE marking and labelling	19
Bibliography	21

European foreword

This document (EN 14528:2015) has been prepared by Technical Committee CEN/TC 163 “Sanitary appliances”, the secretariat of which is held by UNI.

This European Standard shall be given the status of a national standard, either by publication of an identical text or by endorsement, at the latest by January 2016 and conflicting national standards shall be withdrawn at the latest by April 2017.

Attention is drawn to the possibility that some of the elements of this document may be the subject of patent rights. CEN [and/or CENELEC] shall not be held responsible for identifying any or all such patent rights.

This document supersedes EN 14528:2007.

This document has been prepared under a mandate given to CEN by the European Commission and the European Free Trade Association, and supports essential requirements of the EU Construction Products Regulation.

For relationship with EU Construction Products Regulation, see informative Annex ZA, which is an integral part of this document.

Since the latest edition of EN 14528 the most significant technical changes are the following:

- a) introduction of the term “product type”;
- b) introduction of the clause “Dangerous substances”;
- c) modification of the marking of products;
- d) replacement of the clause “Evaluation of conformity” by “Assessment and verification of constancy of performance – AVCP” and replacement of Annex ZA by a new one in accordance with provisions of Regulation 305/2011/EU.

According to the CEN-CENELEC Internal Regulations, the national standards organizations of the following countries are bound to implement this European Standard: Austria, Belgium, Bulgaria, Croatia, Cyprus, Czech Republic, Denmark, Estonia, Finland, Former Yugoslav Republic of Macedonia, France, Germany, Greece, Hungary, Iceland, Ireland, Italy, Latvia, Lithuania, Luxembourg, Malta, Netherlands, Norway, Poland, Portugal, Romania, Slovakia, Slovenia, Spain, Sweden, Switzerland, Turkey and the United Kingdom.

1 Scope

This European Standard specifies the functional requirements and test methods for bidets used for domestic purposes and made from either ceramics or stainless steel.

All drawings are examples only, other forms are permissible.

NOTE For the purposes of this standard the term 'domestic purposes' includes use in hotels, accommodation for students, hospitals and similar buildings, except when special medical provisions are required.

2 Normative references

The following documents, in whole or in part, are normatively referenced in this document and are indispensable for its application. For dated references, only the edition cited applies. For undated references, the latest edition of the referenced document (including any amendments) applies.

EN 35, *Pedestal and wall-hung bidets with over-rim supply - Connecting dimensions*

3 Terms and definitions

For the purposes of this document, the following terms and definitions apply.

3.1

bidet

sanitary appliance for washing the genital area whilst seated

Note 1 to entry: See Figures 1 and 2.

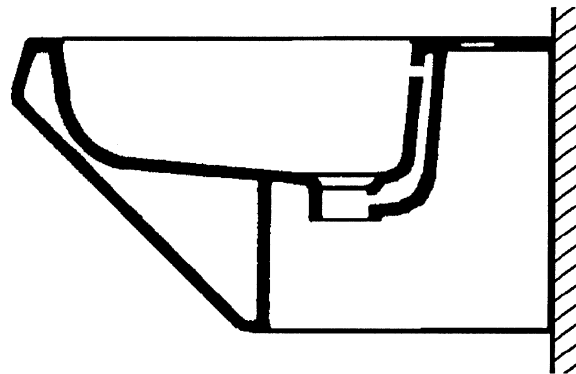


Figure 1 — Wall-hung bidet

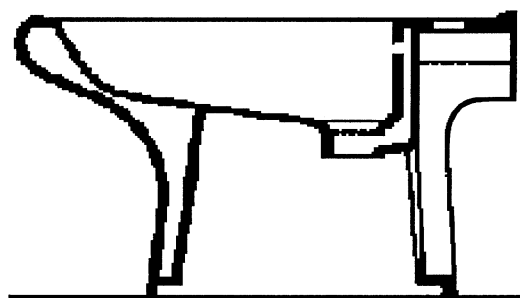


Figure 2 — Pedestal bidet

3.2

cleanability

characteristic which allows surfaces intended to come into contact with water to be visibly smooth, non-absorbent and free from unacceptable internal corners, such that they can be kept visibly free from dirt and/or stains when subject to a regular maintenance regime, which may include, when appropriate, specific instructions for use and care, as specified by the manufacturer

3.3

product type

construction product with a set of representative performance levels or classes in relation to its Essential Characteristics, produced using a given combination of raw materials or other elements in a specific production process

4 Requirements

4.1 Connecting dimensions

The connecting dimensions for the supply and outlet fitting shall conform to EN 35, or the manufacturer shall either supply or recommend appropriate fittings.

4.2 Load stability

When tested in accordance with 5.2, stainless steel and all wall-hung bidets shall withstand a force of $(4,00 \pm 0,1)$ kN without showing any evidence of cracking and/or permanent deformation.

4.3 Cleanability

When tested in accordance with 5.3, bidets shall have smooth and readily cleansed non-absorbent functional surfaces which are free from acute internal corners which would be difficult to clean, i.e. surfaces intended to or likely to come into contact with water during use.

NOTE Functional surfaces do not include inlet and outlet holes, outlet grills, etc.

4.4 Protection against overflowing

4.4.1 Bidets with overflow

Every bidet shall be protected against overflowing.

When tested in accordance with 5.4, the flow rate of the overflow shall not be less than the values given in Table 1.

Table 1 — Flow rates of overflow

Overflow class	Overflow rate l/s
CL 25	0,25
CL 20	0,20
CL 15	0,15
CL 00	See 4.4.2

4.4.2 Bidets without overflow

A bidet with a non-closable outlet or a floor gully may also be used as a protection against overflowing. In this case the bidet is related to Class CL 00.

4.5 Durability

Products conforming to the requirements of 4.2 to 4.4 are deemed to be durable.

5 Test methods

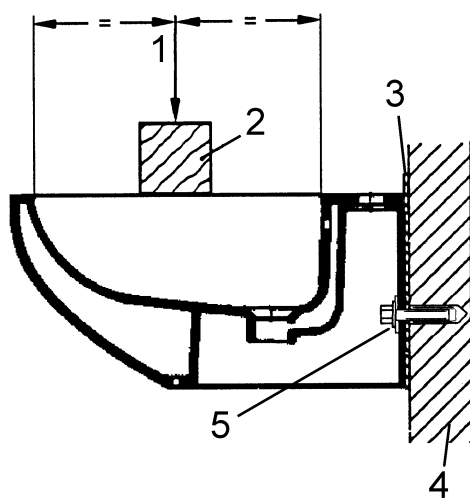
5.1 General

All tests shall be carried out on the same sample bidet.

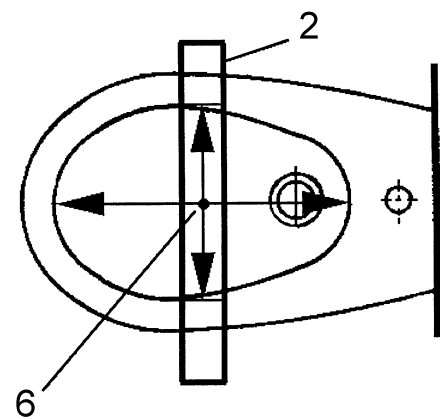
Install the bidet to be tested on a firm flat horizontal or vertical surface as appropriate with a layer of mortar or other material to accommodate any unevenness.

5.2 Static load test

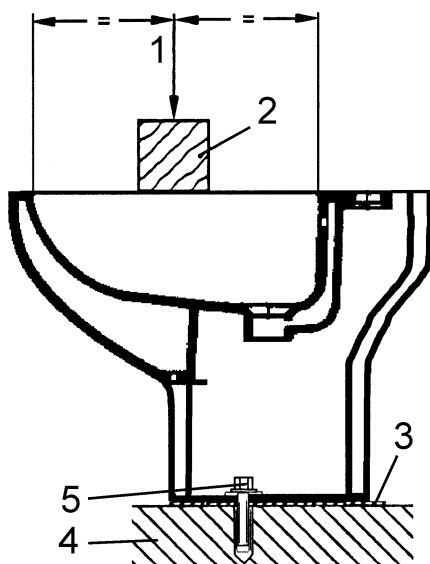
- The bidet shall be fixed in accordance with the manufacturer's instruction onto a smooth surface with a layer of mortar or other facing material used for pointing between the back of the bidet and the smooth surface.
- Gradually apply a force of $(4,00 \pm 0,1)$ kN on top of a wooden beam with a cross section of 100 mm × 100 mm positioned across the geometric centre of the bowl of the bidet parallel to the wall (see Figure 3). Allow the force to remain in position for a period of 1 h.
- Record any failure to comply with 4.2. Any distortion at the points of direct loading shall not constitute a failure.



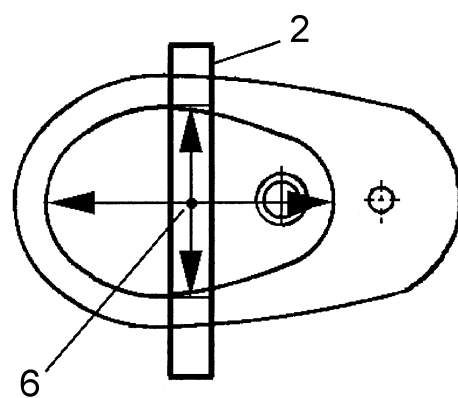
a) Testing the wall-hung bidets – Lateral view



b) Testing the wall-hung bidets – Upper view



c) Testing the pedestal bidets – Lateral view



d) Testing the pedestal bidets – Upper view

Key

- 1 load ($4,0 \pm 0,1$) kN
- 2 wooden beam with cross-section 100 mm x 100 mm of adequate length
- 3 compensation layer
- 4 wall or floor
- 5 threaded rod, nut and flexible washer (maximum torque 5 Nm)
- 6 geometric centre of bowl

Figure 3 — Load test

5.3 Cleanability

- Visually examine the functional surfaces of the bidets using a suitable light source.
- Record any failure to comply with 4.3.

Imperfections that do not affect the functionality of the surface shall not constitute a failure.

5.4 Determination of flow rate of overflow

- The bidet shall be installed horizontally in accordance with the manufacturer's instructions.
- Close the waste-outlet hole(s).
- Introduce the water supply avoiding turbulence by means of a flexible tube with an inner diameter of 20 mm which leads to the bottom of the bowl. Adjust the quantity of water supply in such a way that no water spills over the rim or the tap platform of the bidet, whichever is the lowest.
- Read the water flow rate after a steady-state condition has been established for a period of 60 s by means of a flow-meter fitted into the supply pipe.

6 Dangerous substances

National regulations on dangerous substances may require verification and declaration on release, and sometimes content, when construction products covered by this standard are placed on those markets.

In the absence of European harmonized test methods, verification and declaration on release/content should be done taking into account national provisions in the place of use.

NOTE An informative database covering European and national provisions on dangerous substances is available at the Construction website on EUROPA.

7 Marking

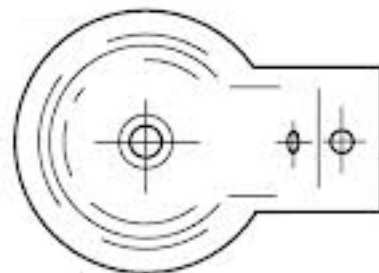
The intended use of bidets is personal hygiene in accordance with the scope of this standard.

NOTE The intended use is also mentioned in Annex ZA, Table ZA.1. The abbreviation "PH" for the intended use personal hygiene might be used for CE marking. A schematic drawing of the product might be used for CE marking.

A schematic drawing of the product may optionally follow the abbreviation for personal hygiene.

EXAMPLE 1 Use of full text: personal hygiene.

EXAMPLE 2 Use of abbreviation: PH.



EXAMPLE 3 Use of abbreviation and the optional schematic drawing: PH

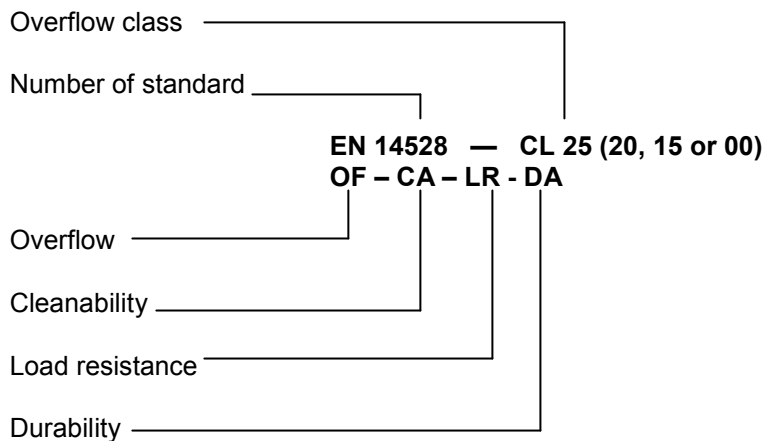
Bidets belong always to one class and type at least. For each class and type a set of requirements to be tested (see 8.2.2) is defined. Due to this, a bidet can be described with a designation code which includes all fulfilled essential requirements.

The relevant product characteristics and the Essential Characteristics for bidets including their abbreviations are given in Table 2.

Table 2 — Characteristics and abbreviations for bidets

Abbreviations	Characteristics
EN 14528	Number of European Standard for bidets for product description
CL (X)	Class of bidet with an integral overflow providing a flow rate (X) with: 25 for $\geq 0,25$ l/s flow rate 20 for $\geq 0,20$ l/s flow rate 15 for $\geq 0,15$ l/s flow rate 00 for without integral overflow
OF	Overflow
CA	Cleanability
LR	Load resistance (for wall-hung wash basins only)
DA	Durability

All bidets shall be designated in accordance with the following system:



The second line of the designation code can be omitted when those characteristics are fulfilled.

EXAMPLE 4 Class 25 bidet, i.e. bidet with an overflow providing a flow rate of 0,25 l/s. All essential characteristics specified for these products in accordance with Annex ZA are satisfied.

EN 14528 — CL 25

8 Assessment and verification of constancy of performance – AVCP

8.1 General

The compliance of bidets with the requirements of this standard and with the performances declared by the manufacturer in the DoP shall be demonstrated by:

- determination of the product type (see 8.2);
- factory production control by the manufacturer (FPC), including product assessment (see 8.3).

The manufacturer shall always retain the overall control and shall have the necessary means to take responsibility for the conformity of the product with its declared performance(s).

8.2 Type testing

8.2.1 General

All performances related to characteristics included in this standard shall be determined when the manufacturer intends to declare the respective performances unless the standard gives provisions for declaring them without performing tests. (e.g. use of previously existing data, CWFT and conventionally accepted performance).

Assessment previously performed in accordance with the provisions of this standard, may be taken into account provided that they were made to the same or a more rigorous test method, under the same AVCP system on the same product or products of similar design, construction and functionality, such that the results are applicable to the product in question.

For the purposes of assessment, the manufacturer's products may be grouped into families, where it is considered that the results for one or more characteristics from any one product within the family are representative for that same characteristics for all products within that same family.

Products may be grouped in different families for different characteristics.

Reference to the assessment method standards should be made to allow the selection of a suitable representative sample.

In addition, the determination of the product type shall be performed for all characteristics included in the standard for which the manufacturer declares the performance:

- at the beginning of the production of a new or modified bidets (unless a member of the same product range), or
- at the beginning of a new or modified method of production (where this may affect the stated properties), or
- they shall be repeated for the appropriate characteristic(s), whenever a change occurs in the modified bidets design, in the raw material or in the supplier of the components, or in the method of production (subject to the definition of a family), which would affect significantly one or more of the characteristics.

Where components are used whose characteristics have already been determined, by the component manufacturer, on the basis of assessment methods of other product standards, these characteristics need not be re-assessed. The specifications of these components shall be documented.

Products bearing regulatory marking in accordance with appropriate harmonized European specifications may be presumed to have the performances declared in the DoP, although this does not replace the responsibility on the bidets manufacturer to ensure that the bidets as a whole are correctly manufactured and its component products have the declared performance values.

8.2.2 Test samples, testing and compliance criteria

The number of samples of bidets to be tested/assessed shall be in accordance with Table 3.

Table 3 — Type testing for bidets

Characteristic to be tested	Assessment method according to clauses of this standard	Number of samples	Requirement and Compliance criteria
Connecting dimensions	4.1	1	4.1
Load resistance	5.2	1	4.2
Cleanability	5.3	1	4.3
Overflow capacity	5.4	1	4.4

8.3 Factory production control (FPC)

8.3.1 General

The manufacturer shall establish, document and maintain an FPC system to ensure that the products placed on the market comply with the declared performance of the essential characteristics.

The FPC system shall consist of procedures, regular inspections and tests and/or assessments and the use of the results to control raw and other incoming materials or components, equipment, the production process and the product.

The results of inspections, tests or assessments requiring action shall be recorded. The action to be taken when control values or criteria are not met shall be recorded.

NOTE Manufacturers having an FPC system, which complies with EN ISO 9001 and which addresses the provisions of the present European standard are considered as satisfying the FPC requirements of the Regulation (EU) No. 305/2011.

8.3.2 Equipment

8.3.2.1 Testing

All weighing, measuring and testing equipment shall be calibrated and regularly inspected in accordance with documented procedures, frequencies and criteria.

8.3.2.2 Manufacturing

All equipment used in the manufacturing process shall be regularly inspected and maintained to ensure use; wear or failure does not cause inconsistency in the manufacturing process. Inspections and maintenance shall be carried out and recorded in accordance with the manufacturer's written procedures and the records retained for the period defined in the manufacturer's FPC procedures.

8.3.3 Raw materials and components

The specifications of all incoming raw materials and components shall be documented, as shall the inspection scheme for ensuring their compliance. In case supplied kit components are used, the constancy of performance system of the component shall be that given in the appropriate harmonized technical specification for that component.

8.3.4 Product testing and assessment

The manufacturer shall establish and document procedures to ensure that the stated values of all of the characteristics are maintained.

8.3.5 Non-complying products

The manufacturer shall have written procedures which specify how non-complying products shall be dealt with. Any such events shall be recorded as they occur and these records shall be kept for the period defined in the manufacturer's written procedures.

Where the product fails to satisfy the acceptance criteria, the provisions for non-complying products shall apply, the necessary corrective action(s) shall immediately be taken and the products or batches not complying shall be isolated and properly identified.

Once the fault has been corrected, the test or verification in question shall be repeated.

The results of controls and tests shall be properly recorded. The product description, date of manufacture, test method adopted, test results and acceptance criteria shall be entered in the records under the signature of the person responsible for the control/test.

With regard to any control result not meeting the requirements of this European Standard, the corrective measures taken to rectify the situation (e.g. a further test carried out, modification of manufacturing process, throwing away or putting right of product) shall be indicated in the records.

8.3.6 Corrective action

The manufacturer shall have documented procedures that instigate action to eliminate the cause of non-conformities in order to prevent recurrence.

Annex ZA (informative)

Clauses of this European Standard addressing the provisions of the EU Construction Products Regulation

ZA.1 Scope and relevant characteristics

This European Standard has been prepared under Mandate M/110 “Sanitary Appliances” as amended by M/139 given to CEN by the European Commission and the European Free Trade Association.

If this European Standard is cited in the Official Journal of the European Union (OJEU), the clauses of this standard, shown in this annex, are considered to meet the provisions of the relevant mandate, under the Regulation (EU) No. 305/2011.

This annex deals with the CE marking of bidets intended for the uses indicated in Table ZA.1 and shows the relevant clauses applicable.

This annex has the same scope as in Clause 1 of this standard related to the aspects covered by the mandate and is defined by Table ZA.1.

Table ZA.1 — Relevant clauses for bidets

Construction Product:	Bidet		
Intended use:	Personal hygiene		
Essential Characteristics	Requirement clauses in this European Standard	Regulatory classes	Notes
Load resistance	4.2	—	Pass/Fail
Cleanability	4.3	—	Pass/Fail
Capacity of overflow	4.4	—	Technical class
Durability	4.5	—	Pass/Fail

The declaration of the product performance related to certain Essential Characteristics is not required in those Member States (MS) where there are no regulatory requirements on these Essential Characteristics for the intended use of the product.

In this case, manufacturers placing their products on the market of these MS are not obliged to determine nor declare the performance of their products with regard to these Essential Characteristics and the option “No performance determined” (NPD) in the information accompanying the CE marking and in the declaration of performance (see ZA.3) may be used for those Essential Characteristics.

ZA.2 Procedure for assessment and verification of constancy of performance (AVCP) of bidets

ZA.2.1 System of AVCP

The AVCP system of bidets indicated in Table ZA.1, established by EC Decision 96/578/EC (OJ L254 of 8.10.1996 p. 49) amended by EC Decision(s) 2001/596/EC (OJ L 209 page 33 of 2.8.2001) and 2002/592/EC (OJ L 192 p. 57 of 20.7.2002) is shown in Table ZA.2 for the indicated intended use(s) and relevant level(s) or class(es) of performance.

Table ZA.2 — System of AVCP

Product	Intended use	Level(s) or class(es)	AVCP system(s)
Bidet	Personal hygiene	—	4
System 4: See Regulation (EU) No. 305/2011 (CPR) Annex V, 1.5			

The AVCP of the bidets in Table ZA.1 shall be according to the AVCP procedures indicated in Table ZA.3 resulting from application of the clauses of this or other European Standard indicated therein. The content of tasks of the notified body shall be limited to those Essential Characteristics as provided for, if any, in Annex III of the relevant mandate and to those that the manufacturer intends to declare.

Table ZA.3 — Assignment of AVCP tasks for bidets used under system 4

Tasks		Content of task	AVCP clauses to apply
Task for the manufacturer	Determination of the product type on the basis of type testing, type calculation, tabulated values or descriptive documentation of the product	Essential Characteristics of relevant Table ZA.1 relevant for the intended use which are declared	8.2
	Factory production control (FPC)	Parameters related to Essential Characteristics of relevant Table ZA.1 relevant for the intended use	8.3

ZA.2.2 Declaration of performance (DoP)

ZA.2.2.1 General

The manufacturer draws up the DoP and affixes the CE marking on the basis of the different AVCP systems set out in Annex V of the Regulation (EU) No. 305/2011:

- the factory production control carried out by the manufacturer;
- the determination by the manufacturer of the product type on the basis of type testing, type calculation, tabulated values or descriptive documentation of the product.

ZA.2.2.2 Content

The model of the DoP is provided in Annex III of the Regulation (EU) No. 305/2011.

In accordance with this Regulation, the DoP shall contain, in particular, the following information:

- the reference of the product type for which the declaration of performance has been drawn up;
- the AVCP system or systems of the construction product, as set out in Annex V of the CPR;
- the reference number and date of issue of the harmonized standard which has been used for the assessment of each Essential Characteristic;
- where applicable, the reference number of the Specific Technical Documentation used and the requirements with which the manufacturer claims the product complies.

The DoP shall in addition contain:

- a) the intended use or uses for the construction product, in accordance with the applicable harmonized technical specification;
- b) the list of Essential Characteristics, as determined in the harmonized technical specification for the declared intended use or uses;
- c) the performance of at least one of the Essential Characteristics of the construction product, relevant for the declared intended use or uses;
- d) where applicable, the performance of the construction product, by levels or classes, or in a description, if necessary based on a calculation in relation to its Essential Characteristics determined in accordance with the Commission determination regarding those Essential Characteristics for which the manufacturer shall declare the performance of the product when it is placed on the market or the Commission determination regarding threshold levels for the performance in relation to the Essential Characteristics to be declared;
- e) the performance of those Essential Characteristics of the construction product which are related to the intended use or uses, taking into consideration the provisions in relation to the intended use or uses where the manufacturer intends the product to be made available on the market;
- f) for the listed Essential Characteristics for which no performance is declared, the letters “NPD” (No Performance Determined).

Regarding the supply of the DoP, Article 7 of the Regulation (EU) No. 305/2011 applies.

The information referred to in Article 31 or, as the case may be, in Article 33 of Regulation (EC) No. 1907/2006 (REACH) shall be provided together with the DoP.

ZA.2.2.3 Examples of DoP

The following gives examples of filled-in DoP for bidets.

EXAMPLE 1 Full-text version of DoP with attached list of product numbers (identification codes) for this DoP:

DECLARATION OF PERFORMANCE

No. ABC1234

1. Unique identification code of the product-type:

For product number(s) see list attached.

2. Type, batch or serial number or any other element allowing identification of the construction product as required under Article 11(4):

Bidets

3. Intended use or uses of the construction product, in accordance with the applicable harmonized technical specification, as foreseen by the manufacturer:

Personal hygiene (PH)

4. Name, registered trade name or registered trade mark and contact address of the manufacturer as required under Article 11(5):

**AnyCo SA,
PO Box 21
B-1050 Brussels, Belgium
Tel. +32987654321
Fax: +32123456789
Email: anyco.sa@provider.be**

5. Where applicable, name and contact address of the authorized representative whose mandate covers the tasks specified in Article 12(2):

**Anyone Ltd
Flower Str. 24
West Hamfordshire
UK-589645 United Kingdom
Tel. +44987654321
Fax: +44123456789
e-mail: anyone.ltd@provider.uk**

6. System or systems of assessment and verification of constancy of performance of the construction product as set out in CPR (305/2011/EU), Annex V:

System 4

7. In case of the declaration of performance concerning a construction product covered by a harmonized standard:

Determination of product type and factory production control by the manufacturer

8. Declared performance

Essential characteristics ^a	Performance	Harmonized technical specification
Load resistance (LR)	Pass	EN 14528:2015
Cleanability (CA)	Pass	
Capacity of overflow (OF)	Pass	
Durability (DA)	Pass	
^a Specific performance of Essential Characteristics are given by the designation code as cited in the attachment.		

9. The performance of the product identified in points 1 and 2 is in conformity with the declared performance in point 8.

This declaration of performance is issued under the sole responsibility of the manufacturer identified in point 4.

Signed for and on behalf of the manufacturer by:

.....

(Name and function)

.....

(place and date of issue)

(signature)

Attachment to Declaration of Performance

No. ABC1234

Product no.	Collection (optional)	Description (optional)	CE marking (optional)	Digits (optional)
6620 01	Amadea	Bidet	EN 14528 — CL 25	11
.....				

.....

(Name and function)

.....

(place and date of issue)

(signature)

(Page/Pages)

EXAMPLE 2 Short-text version of DoP with attached list of product numbers (identification codes) for this DoP:

Declaration of Performance

No. ABC1234

1. For product number (identification code) see list attached.
2. Bidet
3. Personal hygiene (PH)
4. Ceramic sanitary ware Manufacturer

Any Street 1
12345 Example City
Country
Ph.: +49 987-8654-0
Fax: +49 987-8654-1
info@sanitary-plant.com

5. n.a.
6. System 4
7. Determination of product type and factory production control by the manufacturer
- 8.

Essential Characteristics ^a	Performance	Harmonized technical specification
LR	Pass	EN 14528:2015
CA	Pass	
OF	Pass	
DA	Pass	
^a Specific performance of Essential Characteristics are given by the designation code as cited in the attachment.		

9. The performance of the product identified in points 1 and 2 is in conformity with the declared performance in point 8.

This declaration of performance is issued under the sole responsibility of the manufacturer identified in point 4.

Signed for and on behalf of the manufacturer by:

.....
(Name and function)

..... (place and date of issue) (signature)

(Page/Pages)

Attachment to Declaration of Performance

No. ABC1234

Product no.	Collection (optional)	Description (optional)	CE marking (optional)	Digits (optional)
6620 01	Amadea	Bidet	EN 14528 — CL 25	11
.....				

.....
(Name and function)

.....
(place and date of issue)

.....
(signature)

(Page/Pages)

ZA.3 CE marking and labelling

The CE marking symbol shall be in accordance with the general principles set out in Article 30 of Regulation (EC) No. 765/2008 and shall be affixed visibly, legibly and indelibly:

— to the bidet,

or

— to a label attached to it.

Where this is not possible or not warranted on account of the nature of the product, it shall be affixed:

— to the packaging,

or

— to the accompanying documents.

The CE marking shall be followed by:

— the last two digits of the year in which it was first affixed;

— the name and the registered address of the manufacturer, or the identifying mark allowing identification of the name and address of the manufacturer easily and without any ambiguity;

— the unique identification code of the product-type;

— the reference number of the declaration of performance;

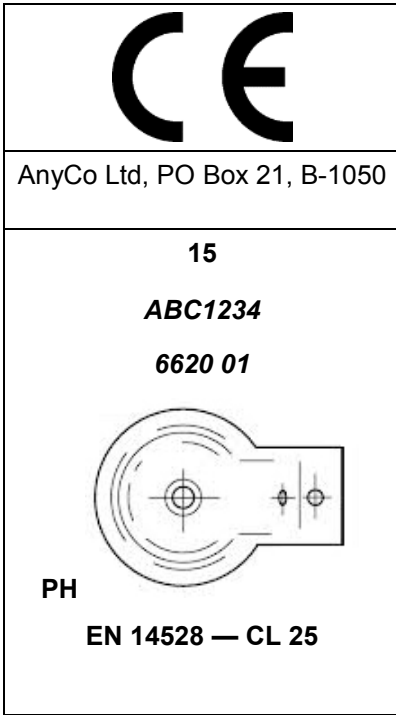
— the level or class of the performance declared;

— the reference to the harmonized technical specification applied;

— the intended use as laid down in the harmonized technical specification applied.

The CE marking shall be affixed before the construction product is placed on the market. It may be followed by a pictogram or any other mark notably indicating a special risk or use.

Figures ZA.1 and ZA.2 give examples of the information related to products subject to AVCP under system 4 to be given on the label.



CE marking, consisting of the “CE”-symbol

Name and the registered address of the manufacturer, or identifying mark

Last two digits of the year in which the marking was first affixed

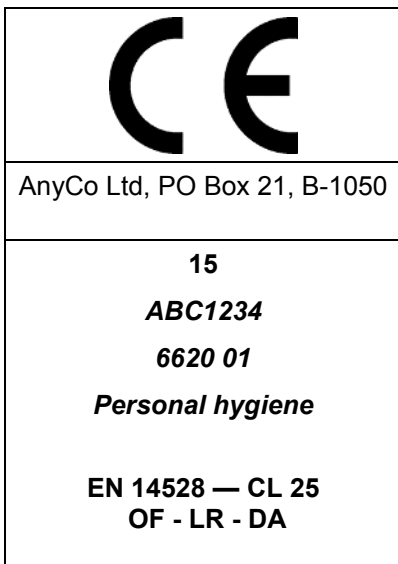
Reference number of the DoP

Unique identification code of the product-type

Intended use of the product as laid down in the European Standard applied

No. of European Standard applied, as referenced in OJEU and level or class of the performance declared

Figure ZA.1 — Example CE marking information of bidet



CE marking, consisting of the “CE”-symbol

Name and the registered address of the manufacturer, or identifying mark

Last two digits of the year in which the marking was first affixed

Reference number of the DoP

Unique identification code of the product-type

Intended use of the product as laid down in the European Standard applied

No. of European Standard applied, as referenced in OJEU and level or class of the performance declared

Figure ZA.2 — Example CE marking information of bidet with limited set of declared characteristics

Bibliography

EN ISO 9001, *Quality management systems - Requirements (ISO 9001)*

British Standards Institution (BSI)

BSI is the national body responsible for preparing British Standards and other standards-related publications, information and services.

BSI is incorporated by Royal Charter. British Standards and other standardization products are published by BSI Standards Limited.

About us

We bring together business, industry, government, consumers, innovators and others to shape their combined experience and expertise into standards-based solutions.

The knowledge embodied in our standards has been carefully assembled in a dependable format and refined through our open consultation process. Organizations of all sizes and across all sectors choose standards to help them achieve their goals.

Information on standards

We can provide you with the knowledge that your organization needs to succeed. Find out more about British Standards by visiting our website at bsigroup.com/standards or contacting our Customer Services team or Knowledge Centre.

Buying standards

You can buy and download PDF versions of BSI publications, including British and adopted European and international standards, through our website at bsigroup.com/shop, where hard copies can also be purchased.

If you need international and foreign standards from other Standards Development Organizations, hard copies can be ordered from our Customer Services team.

Subscriptions

Our range of subscription services are designed to make using standards easier for you. For further information on our subscription products go to bsigroup.com/subscriptions.

With **British Standards Online (BSOL)** you'll have instant access to over 55,000 British and adopted European and international standards from your desktop. It's available 24/7 and is refreshed daily so you'll always be up to date.

You can keep in touch with standards developments and receive substantial discounts on the purchase price of standards, both in single copy and subscription format, by becoming a **BSI Subscribing Member**.

PLUS is an updating service exclusive to BSI Subscribing Members. You will automatically receive the latest hard copy of your standards when they're revised or replaced.

To find out more about becoming a BSI Subscribing Member and the benefits of membership, please visit bsigroup.com/shop.

With a **Multi-User Network Licence (MUNL)** you are able to host standards publications on your intranet. Licences can cover as few or as many users as you wish. With updates supplied as soon as they're available, you can be sure your documentation is current. For further information, email bsmusales@bsigroup.com.

BSI Group Headquarters

389 Chiswick High Road London W4 4AL UK

Revisions

Our British Standards and other publications are updated by amendment or revision.

We continually improve the quality of our products and services to benefit your business. If you find an inaccuracy or ambiguity within a British Standard or other BSI publication please inform the Knowledge Centre.

Copyright

All the data, software and documentation set out in all British Standards and other BSI publications are the property of and copyrighted by BSI, or some person or entity that owns copyright in the information used (such as the international standardization bodies) and has formally licensed such information to BSI for commercial publication and use. Except as permitted under the Copyright, Designs and Patents Act 1988 no extract may be reproduced, stored in a retrieval system or transmitted in any form or by any means – electronic, photocopying, recording or otherwise – without prior written permission from BSI. Details and advice can be obtained from the Copyright & Licensing Department.

Useful Contacts:

Customer Services

Tel: +44 845 086 9001

Email (orders): orders@bsigroup.com

Email (enquiries): cservices@bsigroup.com

Subscriptions

Tel: +44 845 086 9001

Email: subscriptions@bsigroup.com

Knowledge Centre

Tel: +44 20 8996 7004

Email: knowledgecentre@bsigroup.com

Copyright & Licensing

Tel: +44 20 8996 7070

Email: copyright@bsigroup.com



...making excellence a habit.™