

Surface active agents — Determination of foamability and degree of foamability — Circulation test method

The European Standard EN 14371:2004 has the status of a
British Standard

ICS 71.100.40

Confirmed June 2009

National foreword

This British Standard is the official English language version of EN 14371:2004.

The UK participation in its preparation was entrusted to Technical Committee CII/34, Methods of test for surface active agents, which has the responsibility to:

- aid enquirers to understand the text;
- present to the responsible international/European committee any enquiries on the interpretation, or proposals for change, and keep the UK interests informed;
- monitor related international and European developments and promulgate them in the UK.

A list of organizations represented on this committee can be obtained on request to its secretary.

Cross-references

The British Standards which implement international or European publications referred to in this document may be found in the *BSI Catalogue* under the section entitled “International Standards Correspondence Index”, or by using the “Search” facility of the *BSI Electronic Catalogue* or of British Standards Online.

This publication does not purport to include all the necessary provisions of a contract. Users are responsible for its correct application.

Compliance with a British Standard does not of itself confer immunity from legal obligations.

Summary of pages

This document comprises a front cover, an inside front cover, the EN title page, pages 2 to 19 and a back cover.

The BSI copyright notice displayed in this document indicates when the document was last issued.

Amendments issued since publication

Amd. No.	Date	Comments

This British Standard was published under the authority of the Standards Policy and Strategy Committee on 2 December 2004

© BSI 2 December 2004

ISBN 0 580 44936 X

ICS 71.100.40

English version

Surface active agents - Determination of foamability and degree of foamability - Circulation test method

Agents de surface - Détection de l'aptitude au moussage et du taux de moussage - Méthode par circulation

Grenzflächenaktive Stoffe - Bestimmung der Schäumfähigkeit und des Verschäumungsgrades - Zirkulations-Prüfverfahren

This European Standard was approved by CEN on 1 July 2004.

CEN members are bound to comply with the CEN/CENELEC Internal Regulations which stipulate the conditions for giving this European Standard the status of a national standard without any alteration. Up-to-date lists and bibliographical references concerning such national standards may be obtained on application to the Central Secretariat or to any CEN member.

This European Standard exists in three official versions (English, French, German). A version in any other language made by translation under the responsibility of a CEN member into its own language and notified to the Central Secretariat has the same status as the official versions.

CEN members are the national standards bodies of Austria, Belgium, Cyprus, Czech Republic, Denmark, Estonia, Finland, France, Germany, Greece, Hungary, Iceland, Ireland, Italy, Latvia, Lithuania, Luxembourg, Malta, Netherlands, Norway, Poland, Portugal, Slovakia, Slovenia, Spain, Sweden, Switzerland and United Kingdom.



EUROPEAN COMMITTEE FOR STANDARDIZATION
COMITÉ EUROPÉEN DE NORMALISATION
EUROPÄISCHES KOMITEE FÜR NORMUNG

Management Centre: rue de Stassart, 36 B-1050 Brussels

Contents

	page
Foreword.....	3
Introduction	4
1 Scope	5
2 Normative references	5
3 Principle.....	5
4 Reagents.....	6
5 Apparatus	6
6 Test equipment	7
7 Sampling and preparation of the test sample.....	8
8 Procedure	9
9 Expression of results	13
10 Precision	13
11 Test report	13
Annex A (informative) Test equipment.....	14
Annex B (informative) Results of sample A obtained in four laboratories according to M 1 and in three laboratories according to M 2.....	16
Annex C (informative) Ring test results	17
Annex D (informative) Statistical data of the determination of foamability of reference surface active agent RS 1 (0,01 %).....	18
Annex E (informative) Example of foam profiles of surface active agents and detergents	19

Foreword

This document (EN 14371:2004) has been prepared by Technical Committee CEN/TC 276 “Surface active agents”, the secretariat of which is held by AFNOR.

This European Standard shall be given the status of a national standard, either by publication of an identical text or by endorsement, at the latest by March 2005, and conflicting national standards shall be withdrawn at the latest by March 2005.

According to the CEN/CENELEC Internal Regulations, the national standards organizations of the following countries are bound to implement this European Standard: Austria, Belgium, Cyprus, Czech Republic, Denmark, Estonia, Finland, France, Germany, Greece, Hungary, Iceland, Ireland, Italy, Latvia, Lithuania, Luxembourg, Malta, Netherlands, Norway, Poland, Portugal, Slovakia, Slovenia, Spain, Sweden, Switzerland and United Kingdom.

Introduction

The foamability and foamability degree are specified by means of a circulation equipment, whereby the solution of the surface active agent is under fast circulation for 10 min. During this circulation a definite volume of foam is generated which is a typical characteristic for the surface active agent at a certain concentration and temperature. This volume is called "foamability" and is recorded on a 0 ml to 1 500 ml scale and expressed in millilitres.

Additionally the degree of foamability is recorded in parallel on a 0 % to 300 % scale or calculated from the foamability.

A basic objective is to test within a time, a defined circulation speed and a concentration range in which the foam formation comes to a saturation volume. This saturation foam volume nearly represents maximum foamability and is characteristic for any surface active agent.

After the circulation has been stopped, the destabilisation of the foam and the time in which half volume of foam is collapsed are recorded. The half volume collapsing time $t_{V/2}$ indicates the foam stability of the surface active agent.

A foamability profile versus temperature can be achieved by using single isothermal measurements (Method M 1) or by using a new continuous method (Method M 2), where the temperature is changed (increased) during the test. It was been found that the saturated volume quickly follows the temperature changes during circulation.

1 Scope

This document specifies a method for the determination of foamability and degree of foamability of surface active agents by means of a circulation equipment, whereby the solution of the surface active agent is under fast circulation.

The method is applicable to many surface active agents, especially for low and medium foaming surface active agents and products containing surface active agents.

2 Normative references

The following referenced documents are indispensable for the application of this document. For dated references, only the edition cited applies. For undated references, the latest edition of the referenced document (including any amendments) applies.

EN ISO 3696, *Water for analytical laboratory use — Specification and test methods (ISO 3696:1987)*

EN ISO 4788, *Laboratory glassware – Graduated measuring cylinders (ISO/DIS 4788:2003)*

3 Principle

A gear pump recycles 500 g of the test solution, which is carefully controlled concerning the temperature, in a 2 000 ml jacked cylinder and sprays it in a bypass system through a nozzle onto the surface of the liquid. During the test under high flow rate (200 l/h) a characteristic constant "saturated" volume is formed which cannot significantly be increased by any increase of the circulation rate.

The volumes are measured either by visual recording or other equivalent recording auxiliaries like electronic foam height recording systems.

The additionally created foam, starting from a 500 g (ml) volume, is recorded each 30 s. In the time interval between 5,5 min and 10 min where a stable foam phase is observed, the average volume is determined. The foamability at the concentration c and the temperature T , $F_{(c, T)}$, results from it as follows:

$$F_{(c, T)} = \sum V_{s(5,5 \text{ min} \dots 10 \text{ min})} / 10 = 0 \text{ ml} \dots 1\,500 \text{ ml}$$

where

$\sum V_{s(5,5 \text{ min} \dots 10 \text{ min})}$ is the sum of the recorded, saturated volumes at 5,5 min; 6 min; 6,5 min; 7 min; 10 min.

Finally the generated volume (= foam) can be compared with the starting volume and is expressed or recorded at a scale as degree of foamability at the concentration c and the temperature T , $F_{D(c, T)}$:

$$F_{D(c, T)} := F_{(c, T)} / 5 = 0 \% \dots 300 \%$$

Finally, having stopped the circulation the collapsing phase is recorded as the half volume of foam collapsing time $t_{V/2}$ expressed in seconds.

This indicates the stability of the foam and is an optional parameter, which can be measured. This value can be determined by extrapolating from a graph or the collected data values or measured directly.

First such a concentration is chosen, that at 25 °C a volume of foam of about 700 ml to 1 200 ml can be reached under above conditions, so that good foam characteristics with good resolutions of the values can be achieved.

Two equivalent (recording) test methods are available:

— Method M 1: Isothermal measurement

The recording is done at a defined constant temperature, e.g. at 25 °C; other preferred temperatures for recording are 20 °C, 30 °C, 40 °C ... 80 °C. Finally a foamability profile is plotted using the foamability (saturated volume) V_s versus temperature or the degrees of foamability [%] V_s versus temperature. Typically two recordings under identical conditions are made and the average values are taken.

— Method M 2: Continuous measurement

After an isothermal starting phase (5 min at 20 °C) a saturated foam volume is found. Afterward during a continuous temperature increase of 1 °C/min between 20 °C to 80 °C, the foam volumes are recorded. The saturated foam volume quickly follows the temperature changes and the foamability V_s versus temperature can be graphically recorded.

The values shall be recorded at each degree.

4 Reagents

4.1 General

During the test use only reagents of recognized analytical grade and water complying with grade 1 in accordance with EN ISO 3696.

4.2 Laboratory cleaner, e.g. phosphate based surface active agents, with low foaming, for glassware, capable of removing surface active agents.

4.3 Reference surface active agent (RS 1), for calibration.

NOTE If doubts occur about the correct function with a foamability of $F_{(0,01\%, 25\text{ °C})} = (1\ 030 \pm 100)$ ml, see 6.3.

5 Apparatus

5.1 Test equipment, consisting of:

5.1.1 2 l-jacked cylinder, with 3 scales:

Scale 1: 0 ml to 500 ml, for indicating the test volume; 500 ml start level = 0.

Scale 2: 0 ml to 1 500 ml for the generated foam.

Scale 3: 0 % to 300 % degrees of foamability.

Inside dimensions shall be in accordance with ISO 4788. Dimensions of the outlet valve at the bottom are optional.

5.1.2 Gear pump, with a pump head flow rate of 0 l/h to 280 l/h where a rate of 200 l/h shall be adjustable.

5.1.3 Gear pump regulation unit.

5.1.4 Bypass system: Suction tube (8 mm), manometer (0 kPa to 60 kPa), tubes, nozzle (50 mm length, 5 mm diameter).

5.1.5 Electronic temperature sensor, arranged along and behind the suction tube, with a temperature indication either in a digital display or on the display at the thermostatic bath.

5.1.6 Telescopic stand, e.g. H-basement.

5.1.7 Lifiable pump suspension, consisting of a supporting lever, pump on swinging lever and clamps.

5.1.8 Thermostatic bath, consisting either of a common thermostatic bath or a programmable thermostatic bath (preferably used for continuous recording).

5.2 Beaker glass, capacity 800 ml, for preparing the solutions.

5.3 Water jet vacuum pump, recommended for removing test solutions from the cylinder.

5.4 Balance, with an accuracy of 0,1 g.

5.5 Stop watch, with an accuracy of 0,1 s.

6 Test equipment

6.1 Installation of the test equipment

The individual parts (5.1.1 to 5.1.8) shall be assembled according to the supplier's instructions.

Install the telescopic stand, fix the suspension lever with the screw on the telescopic stand, at a height of 688 mm from the desk, fix the gear pump (5.1.2) on the swinging lever and fix the swinging lever above the supporting lever with a clamp (≈ 732 mm); shift both to a position (slight corrections are possible) where the suction tube can be installed on the pump head. The distance between suction tube and bottom of the cylinder shall finally be exactly 10 mm. Fix a clamp (≈ 445 mm) on the lower part of the telescopic stand, so that the whole upper part cannot be shifted lower than to the clamp. Now adjust this 10 mm distance between the suction tube and the bottom. The swinging lever can be moved upward together with the suction tube, if necessary, upward after a slight release at its fixation clamp. Then it is possible to remove the cylinder by lifting and moving the suction tube with the pump slightly to the operator.

Install the bypass with the manometer and the nozzle. The nozzle shall be in a position exactly central above the cylinder. Fix the electronic temperature sensor along and behind the suction tube with small plastic clamps and connect it to the thermostatic bath or to the device which indicates the internal temperature. Connect pump and regulation unit.

The arrangement of the test equipment is shown in Figure A.1.

6.2 Calibration of the pump and circulation flow

To determine the necessary flow rate of 200 l/h, it is helpful to measure the flow rate for at least three different pump settings, e.g. at 40, 60 and 80 intervals by regulating the pump control unit. Usually a setting of about 70 units gives a flow rate of 200 l/h.

Pour approximately 2 l of water into a 2 l calibrated beaker and circulate it at the desired setting. Take the mass of calibrated beaker, fill in during circulation until an amount of approximately 900 g from the water jet is reached. Time with the stopwatch (5.5) to the nearest 0,1 s. Read the mass of water caught in the beaker on the balance (5.4) to the nearest 0.1 g. Use the following short form of equation for the calculation of the flow rate, r_f :

$$r_f = \frac{m \times 3,6}{t} \quad (1)$$

where

m is the mass of the water caught in the beaker, in grams;

t is the time, in seconds.

Using at least three different values, plot the most accurate calibration graph possible for pump delivery [l/h] against scale intervals. Extrapolate this graph to obtain the scale interval necessary for 200 l/h. If required, check the calibration at suitable time intervals.

Under standard conditions the manometer indicates a pressure of about 4 kPa.

If vibrations on the manometer are observed, residues in the pumps could be the reason. In this case clean the pump carefully. Should vibrations remain, exchange the gears for repair set.

6.3 Additional calibration with surface active agent

If there are any doubts about the correct function, the reference surface active agent (RS 1) (4.3) shall be used.

NOTE RS 1 was tested in a ring test at 25 °C and at a concentration of 0,01 % and gave a foamability of F = 1 030 ml, corresponding to a degree of foamability of $F_D = 206$ % (M 1). RS 1 is an EO/PO copolymer surface active agent.

7 Sampling and preparation of the test sample

Liquid samples can be used as delivered. They shall be free of abrasive solid particles to avoid damage to the gear pump.

Samples of solid surface active agents shall be dissolved in water to a 10 % (m/m) stock solution. The final calculation shall be made in respect to the original material.

The optimal concentration of the test solution shall be chosen from Table 1 such that at 25 °C about 700 ml to 1 200 ml foam are generated.

Usually the most suitable concentrations for low and medium foaming surface active agents are 0,05 % and 0,01 %.

Concentration steps given in Table 1 are recommended in order to reach a better reproducibility of the test results between different users and laboratories.

Table 1 — Recommended mass of surface active agent at different concentration steps for start volumes of 500 g each

Concentration range					
Normal range		Preferred range		Limited range	
0,50 %	0,10 %	0,05 %	0,01 %	0,005 %	(0,001 %)
2500 mg	500 mg	250 mg	50 mg	25 mg	5 mg

Weigh the requested amount of surface active agent (= x mg) in a glass beaker, dissolve with distilled water, transfer to a 500 ml volumetric flask and make up to volume.

Licensed copy: Lee Shau Kee Library, HKUST, Version correct as of 03/01/2015, (c) The British Standards Institution 2013

8 Procedure

8.1 Settings of the test equipment

Check the following:

- a) internal temperature of the test solution;
- b) distance of the suction tube to the bottom : 10 mm;
- c) central position of the nozzle above the cylinder;
- d) manometer pressure : about 4 kPa;
- e) nozzle : diameter 5 mm, length 50 mm;
- f) distance nozzle to surface : about 430 mm;
- g) concentration of test solution : see Table 1.

8.2 Cleaning of the test equipment and preparation of the test

Before analysing any new surface active agent, rinse the cylinder (5.1.1) with a cleaner (e.g. at a concentration of 0,5 %) by short circulation. Afterward rinse with water. Determine the foamability of the solution, remove the solution with the water jet vacuum pump (5.3) or via the outlet valve and then rinse with water.

NOTE If a specific surface active agent shows the tendency to be adsorbed to the glass (e.g. quats etc.), first a blank test run should be made with the test solution. However this result is not yet reliable, because some surface active agents with strong adsorbance behaviour are fixed onto the glass and can influence the following measurements. It has been found, that a "natural wetted" glass surface gives more precise values, than glass pre-wetted with the cleaner only.

Rinse shortly with water, empty the cylinder (5.1.1) and proceed with the measurements.

8.3 Determination of foamability as example with "surface active agent A"

8.3.1 General

The following determination is demonstrated with the help of an example that is the "surface active agent A". This sample is a short chain non-ionic silicone surfactant (wetting agent) with high adsorption properties.

If there is not a satisfying congruency between the values measured according to Method M 1 (see 8.3.2) and Method M 2 (see 8.3.3), the values determined according to Method M 1 (isothermal method) shall be preferred due to their longer measuring time.

8.3.2 Isothermal, discontinuous Method M 1

Adjust the thermostatic bath (5.1.8) which is connected with the cylinder (5.1.1) to the preselected temperature, preferably at 25 °C. Pour carefully the externally prepared and pre-heated test solution into the cleaned cylinder and wait until the solution has reached the correct measuring temperature.

Start the gear pump (5.1.2) and record the foam volume in intervals of 30 s. Usually at least after 5 min a relatively saturated constant foam level can be observed. Continue the circulation for 10 min. Then stop the gear pump and record the collapsing behaviour for further 5 min (minimum) to obtain additional information about the foam stability. Determine the mean value of 10 readings recorded between 5,5 min and 10 min and express it as foamability F in millilitres.

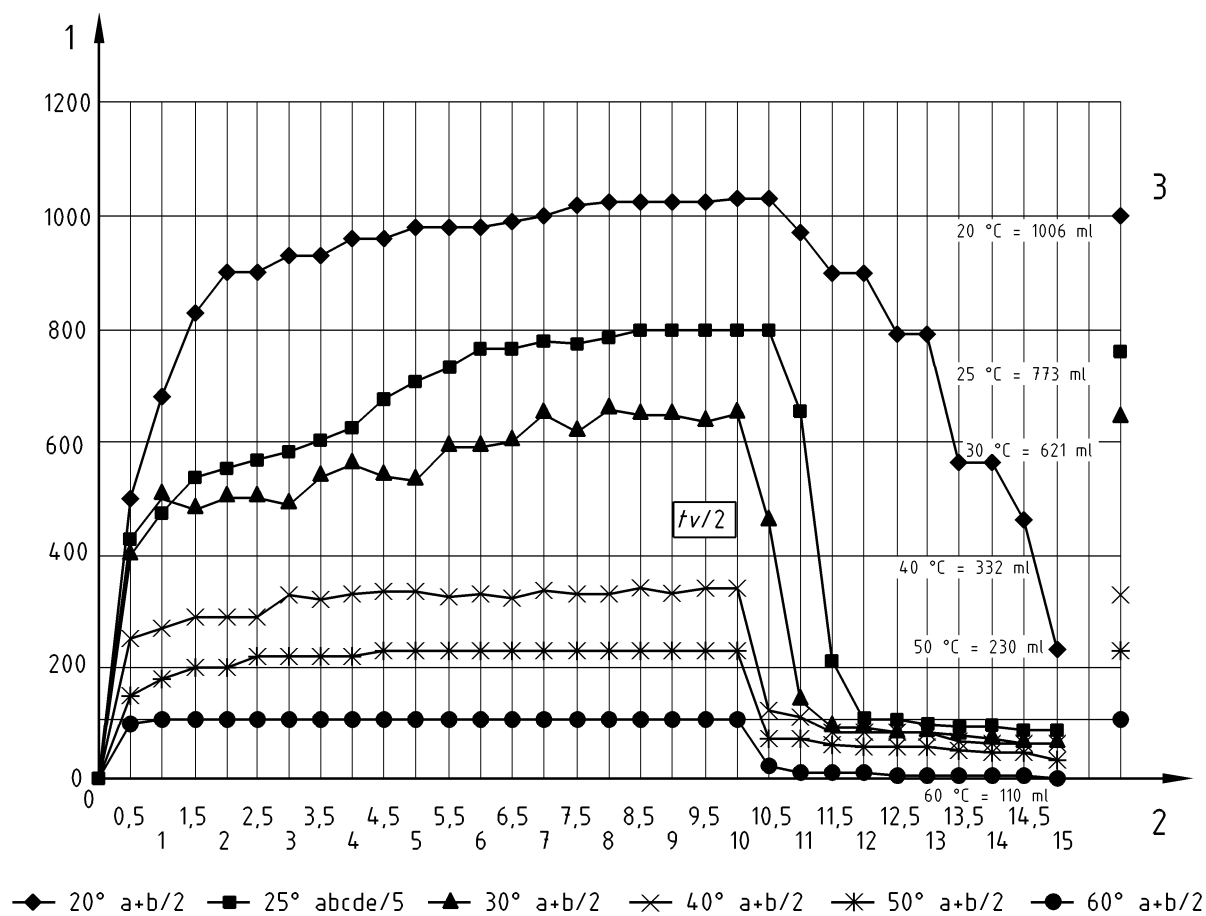
The mean values of foamability F obtained from surface active agent A are given in Table 2.

Table 2 — Foamability as function of time and temperature of surface active agent A with a concentration of 0,01 % determined according to Method M 1

Time in minutes	Foamability, in millilitres at					
	20°C 2 recordings	25°C 5 recordings	30°C 2 recordings	40°C 2 recordings	50°C 2 recordings	60°C 2 recordings
0	0	0	0	0	0	0
0,5	500	408	430	250	150	100
1	680	472	500	270	180	110
1,5	830	536	480	290	200	110
2	900	552	500	290	200	110
2,5	900	568	500	290	220	110
3	930	584	490	330	220	110
3,5	930	604	540	320	220	110
4	960	624	560	330	220	110
4,5	960	676	540	335	230	110
5	980	706	530	335	230	110
5,5	980	732	590	325	230	110
6	980	764	590	330	230	110
6,5	990	764	600	320	230	110
7,5	1 020	776	620	330	230	110
8	1 025	784	660	330	230	110
8,5	1 025	794	650	340	230	110
9	1 025	800	650	330	230	110
9,5	1 025	800	640	340	230	110
10	1 030	800	650	340	230	110
10,5	1 030	796	460	120	70	20
11	970	652	140	110	70	10
11,5	900	214	90	80	60	10
12	900	104	90	80	55	10
12,5	790	102	80	80	55	5
13	790	94	80	80	55	5
13,5	560	92	75	65	50	5
14	560	90	70	60	45	5
14,5	460	86	60	60	45	0
15	230	82	60	60	35	0
F_c (ml)	1 006	773	621	332	230	110

In Figure 1 the foamability values given in Table 2 are plotted against the test time.

F_D at 20 °C = 201 %, at 25 °C = 155 %, at 30 °C = 124 %, at 40 °C = 66 %, at 50 °C = 46 %



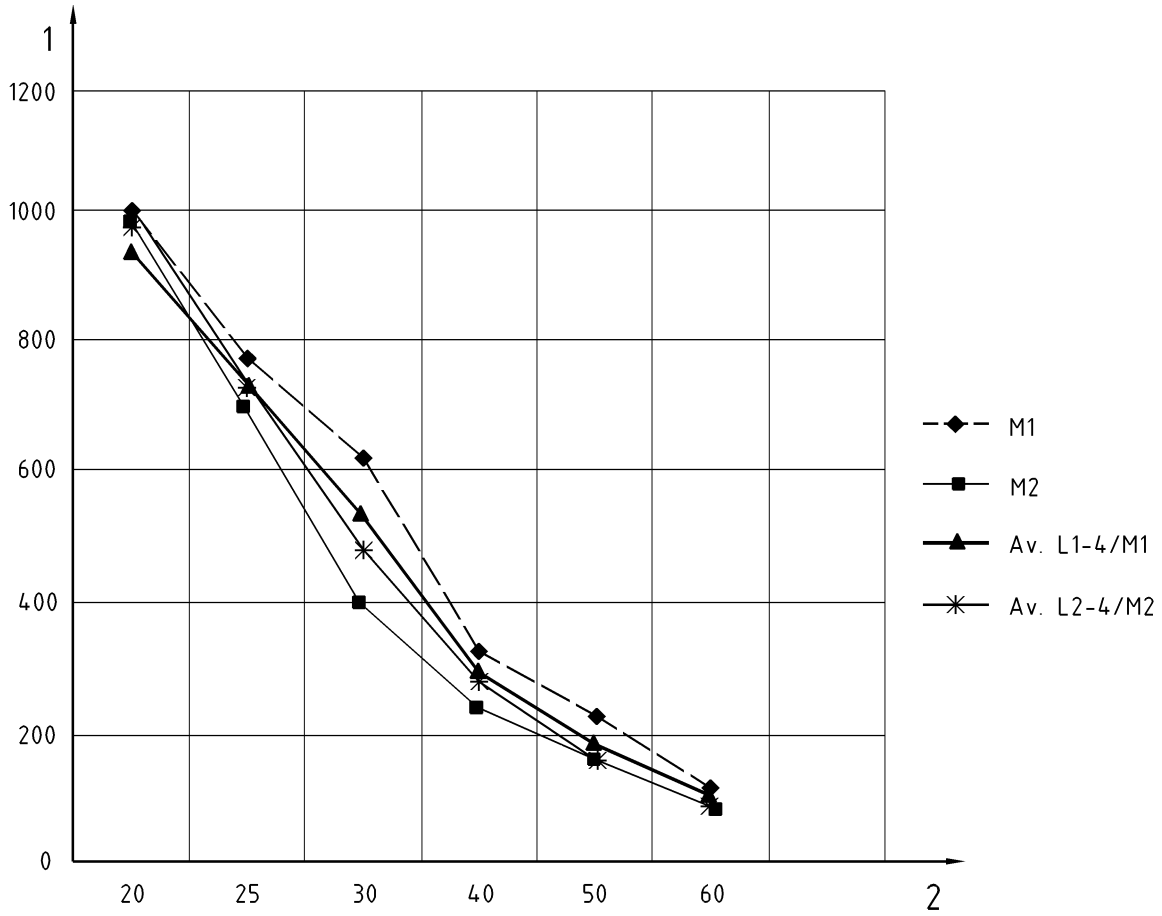
$t_{v/2}$ at 20 °C = 240 s, at 25 °C = 75 s, at 30 °C = 45 s, at 40 °C = 25 s, at 50 °C = 50 s

Key

- 1 Foamability in millilitres
- 2 Time in minutes
- 3 Mean value of 10 readings, see 8.3.2
- F_c Foamability of the surface active agent with the concentration c , in millilitres
- F_D Degree of foamability (= $F_c/5$), in percent
- $t_{v/2}$ Half volume collapsing time, in seconds

Figure 1 — Foamability as function of time at different temperatures for surface active agent A with a concentration of 0,01 % determined according to Method M 1

In Figure 2 foamability is plotted against temperature for surface active agent A where values according to M 1 are compared in four laboratories and those according to M 2 in three laboratories.



Key

- 1 Foamability in millilitres
- 2 Temperatures in °C

Figure 2 —Foamability as function of temperature for surface active agent A according to Method M 1 and Method M 2

Such, single foamability profiles, $F_{(c, T)} = f(t)$, as demonstrated in Figure 1 can be plotted and used to obtain a foamability profile showing the foamability F_c as function of temperature as shown in Figure 2. As an alternative, the continuous measuring Method M 2 according to 8.3.3 leads also to a temperature related to foamability profile F_c against temperature.

8.3.3 Continuous Method M 2

Under the elaborated conditions a saturated foam volume quickly follows any temperature change. Such a foamability profile of a surface active agent can be measured within 1 h after a 5 min isotherm starting period at 20 °C and a measuring period where the temperature is ramped between 20 °C and 80 °C with a gradient of about 1 °C/min.

- a) Using a common thermostatic bath

Measure the prepared test solution at 20 °C over 5 min or until the saturation level is constant. Then elevate the temperature of the common thermostatic bath manually by 1 °C/min during proceeding circulation. Record the foam volume at each full degree of the test solution. Usually, such one value is collected per minute.

Afterwards plot a foamability profile $F_c = f(T)$;

- b) using a programmable thermostatic bath

Preselect a programme on the thermostatic bath to keep the internal measuring temperature 5 min at 20 °C and increase afterwards with a gradient of 1 °C/min from 20 °C up to 80 °C. The volume of foam shall be recorded at each degree.

Afterwards plot a foamability profile $F_c = f(T)$.

9 Expression of results

Give the result as a table and a diagram and calculate the foamability, $F_{(c, T)}$, expressed in millilitres, as mean value from 10 readings of saturated volumes between the 5,5 min and 10 min or give the degree of foamability, $F_{D(c, T)}$, by dividing $F_{(c, T)}$ (mean value) by 5, expressed in percent.

Plot graphs to illustrate the changes of foamability during the time or temperature.

Note the used method (M 1) or (M 2).

Extrapolate the half volume collapsing time, $t_{V/2}$, from the table of collected values or from the graph $F_{(c, T)} = f(t)$.

10 Precision

10.1 Repeatability limit

The absolute difference between two independent single test results, obtained using the same method on identical test material in the same laboratory by the same operator using the same equipment within a short interval of time, will not exceed the repeatability limit, r , in more than 5 % of cases.

The ring test results are shown in Table C.1.

10.2 Reproducibility limit

The absolute difference between two independent single test results, obtained using the same method on identical test material in different laboratories by different operators using different equipment, will not exceed the reproducibility limit, R , in more than 5 % of cases.

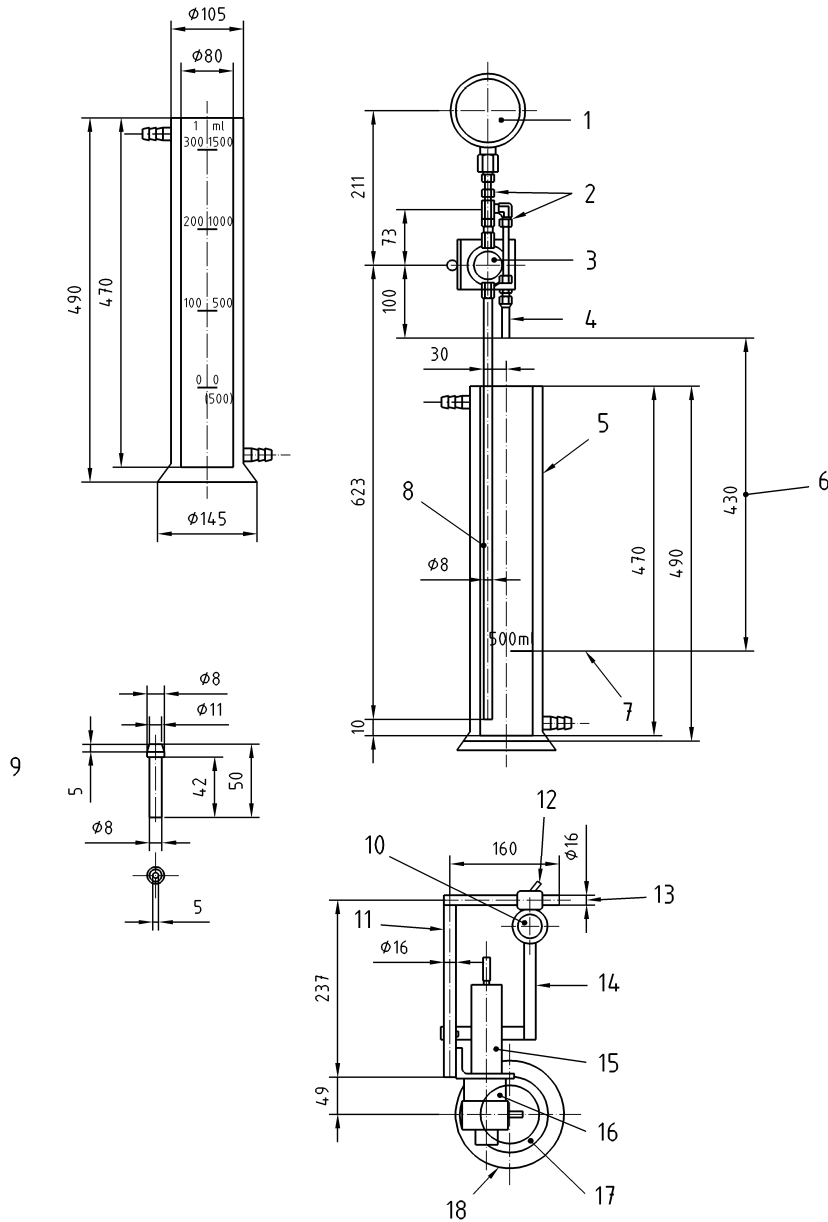
The ring test results are shown in Table C.1.

11 Test report

The test report shall include at least the following information:

- a) all information necessary for the complete identification of the sample;
- b) a reference to this document;
- c) the method used;
- d) the test results (graphs and mean values of foamability, see Clause 9);
- e) any operation not included in this document or regarded as optional, as well as any incidents which may have affected the results.

Annex A (informative) Test equipment



Key

- | | | | |
|---|----------------------------------|----|----------------------------------------------------------|
| 1 | Manometer 0 kPa – 60 kPa | 10 | Static |
| 2 | Screwable joints | 11 | Swinging lever and fixation for pump |
| 3 | Pump – Gear pump, head | 12 | Clumb |
| 4 | Nozzle 5 mm inside | 13 | Fixed on a telescopic stand |
| 5 | 2L/Double-Wall-Cylinder | 14 | Supporting lever |
| 6 | Distance nozzle-Surface = 430 mm | 15 | Engine of pump (connected with separate regulation unit) |
| 7 | Start volume = 500 ml = 0 | 16 | Pump head |
| 8 | Suction pipe | 17 | Cylinder |
| 9 | Nozzle | 18 | Stand of cylinder |

Figure A.1 — Design of test equipment

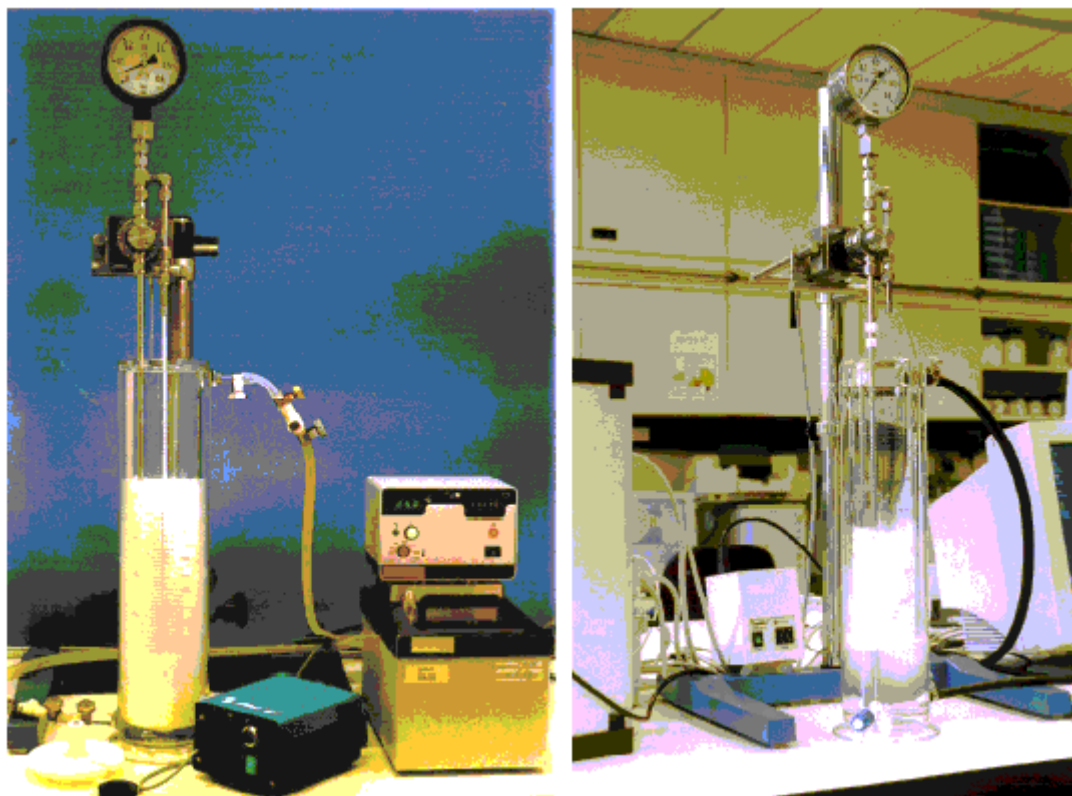


Figure A.2 — General arrangement of test equipment

Annex B (informative)

Results of sample A obtained in four laboratories according to M 1 and in three laboratories according to M 2

Table B.1

Surface active agents	Temperature °C	Foamability ml								
		Method M 1				Method M 2				
		Lab 1	Lab 2	Lab 3	Lab 4	Mean value	Lab 1	Lab 2	Lab 3	Mean value
Sample A 0,01 %	20	855	875	1 006	1 028	941	930	990	1 002	974
	25	628	650	773	894	736	720	700	754	725
	30	480	430	621	615	537	480	405	568	484
	40	311	240	332	313	299	250	240	369	286
	50	205	140	230	171	187	170	155	153	159
	60	129	80	110	77	99	80	90	83	84

Annex C (informative)

Ring test results

The ring tests have been carried out in 1998 by CESIO on samples of surface active agent A (0,01 % at 25 °C) of which foamability has been determined after 5 min to 10 min.

Table C.1

Laboratory	Single values ml	Mean value ml	Standard deviation ml	Variation coefficient %
1	722 713 520 513 675	628	104	16,5
2	627 593 769 578 682	650	77,7	12,0
3	786 776 773 761 769	772	9,19	1,19
4	892 908 894 842 932	894	33,0	3,69

Number of collaborative laboratories:	4
Total number of values:	20
Mean value (m):	737 ml
Repeatability standard deviation, (s_r):	8,35 ml
Repeatability r ($r = 2,8 \times s_r$):	23,4 ml
Variation coefficient of repeatability ($s_r \times 100/m$):	1,13 %
Reproducibility standard deviation (s_R):	123 ml
Reproducibility R ($R = 2,8 \times s_R$):	344 ml
Variation coefficient of reproducibility ($s_R \times 100/m$):	1,66 %

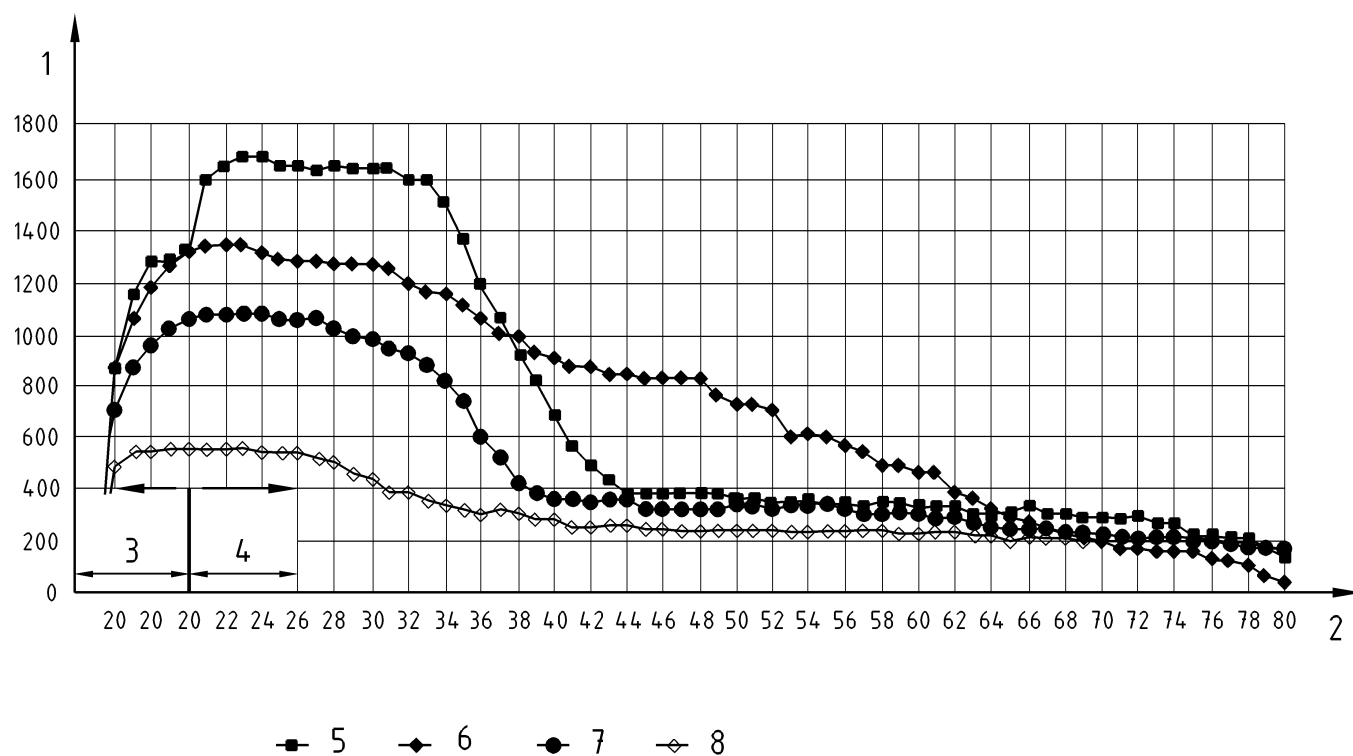
Annex D (informative)

Statistical data of the determination of foamability of reference surface active agent RS 1 (0,01 %)

Temperature	Laboratory 1	Mean value Laboratory 2	Laboratory 3	Laboratory 4	Mean value of laboratories	Standard deviation	Standard deviation of the mean value	Confidence interval of the mean value at a confidence level of 95 %
°C	ml	ml	ml	ml	ml	ml	ml	ml
20	1 073	1 082	1 196	1 186	1 134	65,8	32,9	1 134 ± 104,6
25	1 017	970	1 094	1 030	1 028	51,1	25,6	1 028 ± 81,4
30	925	862	940	892	905	34,8	17,4	905 ± 55,4
40	340	-	335	343	339	4,0	2,3	339 ± 10,0
50	136	-	110	158	135	24,0	13,9	135 ± 59,7

Annex E (informative)

Example of foam profiles of surface active agents and detergents



Key

- 1 Foamability [ml]
- 2 Temperature (°C)
- 3 5 min isotherm startphase
- 4 Measuring phase 20 °C to 80 °C; 1 °C/min
- 5 Nio-Tenside 0,005 %
- 6 LAS 0,005 %
- 7 Detergent 1 (0,010 %)
- 8 Detergent 2 (0,010 %)

Figure E.1 - Test at 5 min isotherm at 20 °C ; 20 °C to 80 °C with temperature increase of 1 °C/min and a flow rate of 200 l/h

BSI — British Standards Institution

BSI is the independent national body responsible for preparing British Standards. It presents the UK view on standards in Europe and at the international level. It is incorporated by Royal Charter.

Revisions

British Standards are updated by amendment or revision. Users of British Standards should make sure that they possess the latest amendments or editions.

It is the constant aim of BSI to improve the quality of our products and services. We would be grateful if anyone finding an inaccuracy or ambiguity while using this British Standard would inform the Secretary of the technical committee responsible, the identity of which can be found on the inside front cover.
Tel: +44 (0)20 8996 9000. Fax: +44 (0)20 8996 7400.

BSI offers members an individual updating service called PLUS which ensures that subscribers automatically receive the latest editions of standards.

Buying standards

Orders for all BSI, international and foreign standards publications should be addressed to Customer Services. Tel: +44 (0)20 8996 9001.
Fax: +44 (0)20 8996 7001. Email: orders@bsi-global.com. Standards are also available from the BSI website at <http://www.bsi-global.com>.

In response to orders for international standards, it is BSI policy to supply the BSI implementation of those that have been published as British Standards, unless otherwise requested.

Information on standards

BSI provides a wide range of information on national, European and international standards through its Library and its Technical Help to Exporters Service. Various BSI electronic information services are also available which give details on all its products and services. Contact the Information Centre.
Tel: +44 (0)20 8996 7111. Fax: +44 (0)20 8996 7048. Email: info@bsi-global.com.

Subscribing members of BSI are kept up to date with standards developments and receive substantial discounts on the purchase price of standards. For details of these and other benefits contact Membership Administration.
Tel: +44 (0)20 8996 7002. Fax: +44 (0)20 8996 7001.
Email: membership@bsi-global.com.

Information regarding online access to British Standards via British Standards Online can be found at <http://www.bsi-global.com/bsonline>.

Further information about BSI is available on the BSI website at <http://www.bsi-global.com>.

Copyright

Copyright subsists in all BSI publications. BSI also holds the copyright, in the UK, of the publications of the international standardization bodies. Except as permitted under the Copyright, Designs and Patents Act 1988 no extract may be reproduced, stored in a retrieval system or transmitted in any form or by any means – electronic, photocopying, recording or otherwise – without prior written permission from BSI.

This does not preclude the free use, in the course of implementing the standard, of necessary details such as symbols, and size, type or grade designations. If these details are to be used for any other purpose than implementation then the prior written permission of BSI must be obtained.

Details and advice can be obtained from the Copyright & Licensing Manager.
Tel: +44 (0)20 8996 7070. Fax: +44 (0)20 8996 7553.
Email: copyright@bsi-global.com.