

Railway applications — Measuring of new and modified freight wagons —

Part 5: Bogies with 3 wheelsets

The European Standard EN 13775-5:2004 has the status of a
British Standard

ICS 45.060.20

National foreword

This British Standard is the official English language version of EN 13775-5:2004.

The UK participation in its preparation was entrusted by Technical Committee RAE/1, Railway applications, to Subcommittee RAE/1/-/9, Wagons (tank/freight), which has the responsibility to:

- aid enquirers to understand the text;
- present to the responsible international/European committee any enquiries on the interpretation, or proposals for change, and keep the UK interests informed;
- monitor related international and European developments and promulgate them in the UK.

A list of organizations represented on this subcommittee can be obtained on request to its secretary.

Cross-references

The British Standards which implement international or European publications referred to in this document may be found in the *BSI Catalogue* under the section entitled “International Standards Correspondence Index”, or by using the “Search” facility of the *BSI Electronic Catalogue* or of British Standards Online.

This publication does not purport to include all the necessary provisions of a contract. Users are responsible for its correct application.

Compliance with a British Standard does not of itself confer immunity from legal obligations.

Summary of pages

This document comprises a front cover, an inside front cover, the EN title page, pages 2 to 21 and a back cover.

The BSI copyright notice displayed in this document indicates when the document was last issued.

Amendments issued since publication

Amd. No.	Date	Comments

This British Standard was published under the authority of the Standards Policy and Strategy Committee on 29 July 2004

© BSI 29 July 2004

ISBN 0 580 44174 1

EUROPEAN STANDARD

EN 13775-5

NORME EUROPÉENNE

EUROPÄISCHE NORM

June 2004

ICS 45.060.20

English version

Railway applications - Measuring of new and modified freight wagons - Part 5: Bogies with 3 wheelsets

Applications ferroviaires - Mesure des wagons lors de leur construction et lors de modifications - Partie 5: Bogies à trois essieux

Bahnanwendungen - Vermessung von Güterwagen beim Neubau und bei Umbauten - Teil 5: Drehgestelle mit 3 Radsätzen

This European Standard was approved by CEN on 1 April 2004.

CEN members are bound to comply with the CEN/CENELEC Internal Regulations which stipulate the conditions for giving this European Standard the status of a national standard without any alteration. Up-to-date lists and bibliographical references concerning such national standards may be obtained on application to the Central Secretariat or to any CEN member.

This European Standard exists in three official versions (English, French, German). A version in any other language made by translation under the responsibility of a CEN member into its own language and notified to the Central Secretariat has the same status as the official versions.

CEN members are the national standards bodies of Austria, Belgium, Cyprus, Czech Republic, Denmark, Estonia, Finland, France, Germany, Greece, Hungary, Iceland, Ireland, Italy, Latvia, Lithuania, Luxembourg, Malta, Netherlands, Norway, Poland, Portugal, Slovakia, Slovenia, Spain, Sweden, Switzerland and United Kingdom.



EUROPEAN COMMITTEE FOR STANDARDIZATION
COMITÉ EUROPÉEN DE NORMALISATION
EUROPÄISCHES KOMITEE FÜR NORMUNG

Management Centre: rue de Stassart, 36 B-1050 Brussels

Contents

Page

Foreword.....	3
Introduction.....	4
1 Scope.....	4
2 Normative references.....	4
3 Terms and definitions.....	4
4 Symbols and abbreviations.....	4
5 Requirements.....	5
5.1 General.....	5
5.2 Precondition.....	5
5.3 Measuring processes.....	5
Annex A (normative) Control sheet.....	15
Annex B (informative) Example of measuring process 1.....	17
Annex C (informative) Terminology.....	20
Bibliography.....	21

Foreword

This document EN 13775-5:2004 has been prepared by Technical Committee CEN/TC 256 "Railway applications", the secretariat of which is held by DIN.

This European Standard shall be given the status of a national standard, either by publication of an identical text or by endorsement, at the latest by December 2004, and conflicting national standards shall be withdrawn at the latest by December 2004.

This European Standard EN 13775 "Railway applications – Measurement of new and modified freight wagons" comprises the following parts:

- Part 1: Measuring principles
- Part 2: Freight wagons with bogies
- Part 3: Freight wagons with 2 wheelsets
- Part 4: Bogies with 2 wheelsets
- Part 5: Bogies with 3 wheelsets
- Part 6: Multiple and articulated freight wagons

Annex A is normative, Annexes B to D are informative.

According to the CEN/CENELEC Internal Regulations, the national standards organizations of the following countries are bound to implement this European Standard: Austria, Belgium, Cyprus, Czech Republic, Denmark, Estonia, Finland, France, Germany, Greece, Hungary, Iceland, Ireland, Italy, Latvia, Lithuania, Luxembourg, Malta, Netherlands, Norway, Poland, Portugal, Slovakia, Slovenia, Spain, Sweden, Switzerland and the United Kingdom.

Introduction

It is normal practice in all European countries to carry out checks and measurements on the major components of new and modified freight wagons and bogies. In view of the importance of uniform criteria for international transport in all European countries, this European Standard has been prepared.

1 Scope

This European Standard specifies principles and requirements for measuring bogies with 3 wheelsets. This ensures that the measuring processes are applied in accordance with uniform criteria. It applies to new and modified bogies with 3 wheelsets.

Provisions going beyond the scope of these requirements are generally agreed between the contracting parties involved.

The measuring processes relate to the bogies with or without add-ons in their entirety or just part of them if the geometrical structure does not permit anything else. Where appropriate, other measuring processes not specified here are necessary and are specified in each individual case.

2 Normative references

This European Standard incorporates by dated or undated reference, provisions from other publications. These normative references are cited at the appropriate places in the text and the publications are listed hereafter. For dated references, subsequent amendments to or revisions of any of these publications apply to this European Standard only when incorporated in it by amendment or revision. For undated references the latest edition of the publication referred to applies (including amendments).

EN 13775-1:2003, *Railway applications — Measuring new and modified freight wagons — Part 1: Measuring principles*.

3 Terms and definitions

For the purposes of this European Standard, the terms and definitions given in EN 13775-1:2003 apply.

4 Symbols and abbreviations

For the purposes of this European Standard, the following symbols and abbreviations apply.

1 Bogie end 1

2 Bogie end 2



Bearing point for suspension compensating beam



Suspension bracket with bushing



Axle-guard with axle-guard cheek

5 Requirements

5.1 General

The limit deviations apply to the finished product in each case.

Deviations from this European Standard are allowed as long as they do not assume proportions that represent an operating hazard. However, they shall be agreed with the contracting party involved and the inspection agency.

5.2 Precondition

The precondition for carrying out the measuring processes as specified in this standard is that the measuring principles laid down in EN 13775-1 are adhered to.

Not all the measuring point dimension designations are listed in the figures in this standard. Unless otherwise indicated, the figures show the normal position.

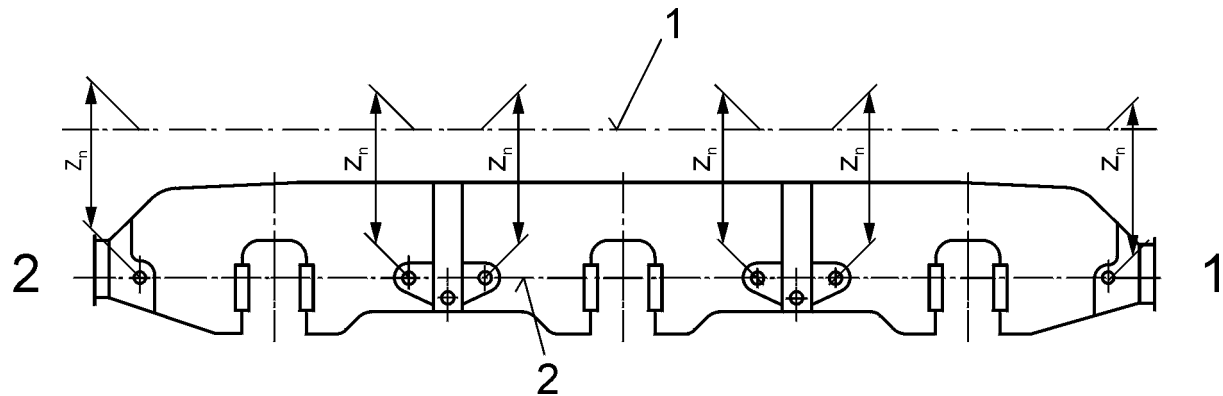
5.3 Measuring processes

A control sheet form for the results of the measuring processes is given in annex A.

Measuring process 1

Position of the suspension bracket holes and position of the holes for the compensating beam.

For the measuring process, the frame is moved into an unrestrained support position.



Key

- 1 Levelling plane
- 2 Theoretical auxiliary plane

Figure 1

The distance from the suspension bracket holes and the suspension compensating beam holes z_n to the levelling plane is measured (see Figure 1). The z_n values shall be averaged for each beam and the mean value shall be adopted for further measurement of both holes.

EN 13775-5:2004 (E)

From the 8 measurements obtained z_n , the distances between the 6 pairs of suspension brackets and the levelling plane shall be determined in the middle of the axle in each case.

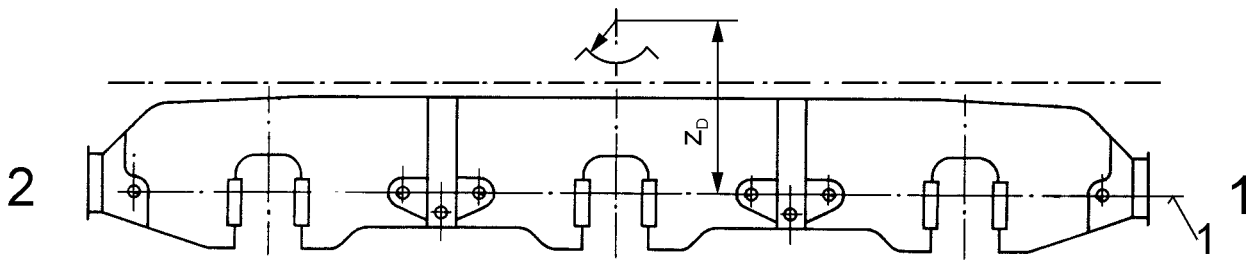
The deviation z_n of the 6 mean values to the levelling plane shall be calculated.

Limit deviations for z_n : ± 3 mm

See annex B.

Measuring process 2

Distance between the theoretical plane of suspension bracket bushing pair and the centre of the bogie pivot.



Key

1 Theoretical plane of suspension bracket bushing pair (auxiliary plane)

Figure 2

The theoretical plane of the suspension bracket bushing pair determined in measuring process 1 is the reference plane for measuring the centre point of the bogie pivot (see Figure 2).

Limit deviations for z_D : ± 2 mm

Measuring process 3

Distance between the outside front faces of the suspension brackets and the bearing points for the suspension compensating beams in the transverse direction of the bogie.

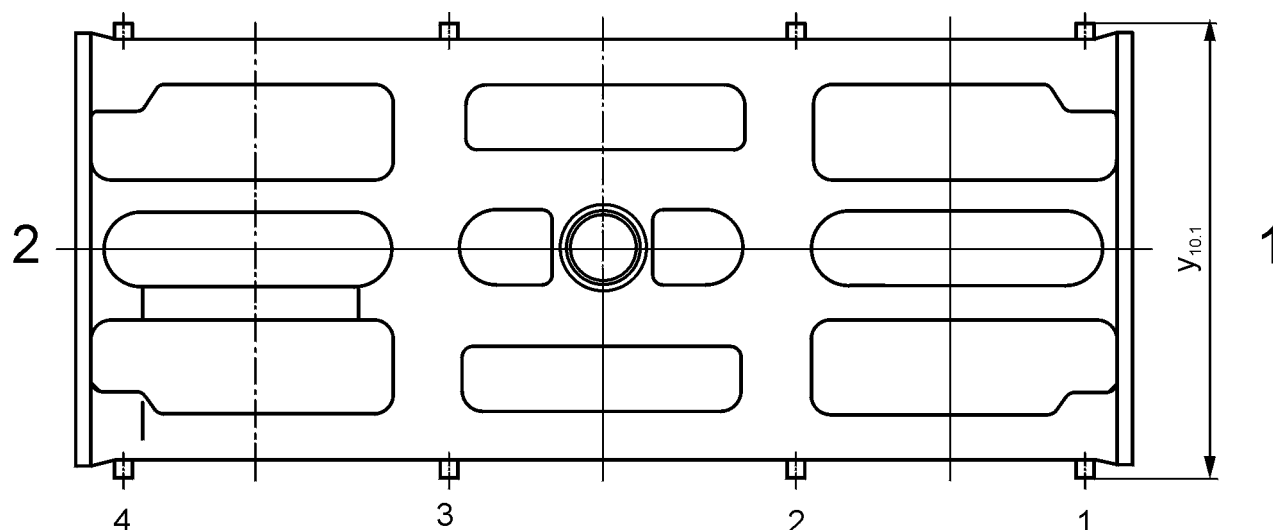


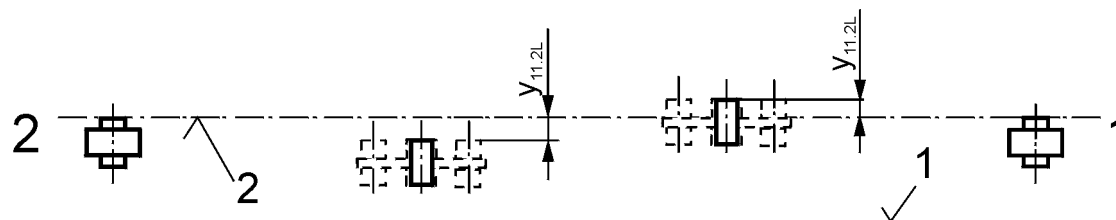
Figure 3

The distance y_{10} between the opposite front faces of the suspension brackets and the bearing points for the suspension compensating beams is measured at measuring points 1, 2, 3, 4 (see Figure 3).

Limit deviation for y_{10} : ± 2 mm

Measuring process 4

Position of the suspension bracket front faces and the bearing points for the compensating beams.



Key

- 1 Centre line of the bogie
- 2 Reference plane

Figure 4

The deviation y_{11} of the four front faces of the compensating beams from the alignment of the front faces of the outer suspension brackets is measured (see Figure 4).

Limit deviations for y_{11} : ± 2 mm

Measuring process 5

Diagonal distance between the centres of pairs of suspension brackets.

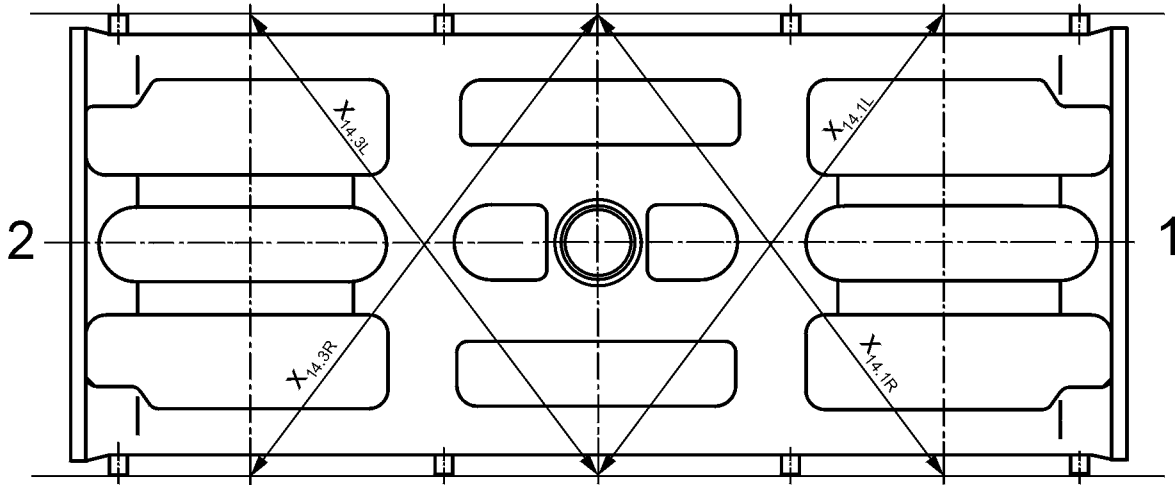


Figure 5

The diagonal distances x_{14} between the centres of the associated pairs of suspension brackets are measured (see Figure 5).

Permissible difference for two diagonally associated x_{14} dimensions: 3 mm

Measuring process 6

Concentricity of the bogie pivot.

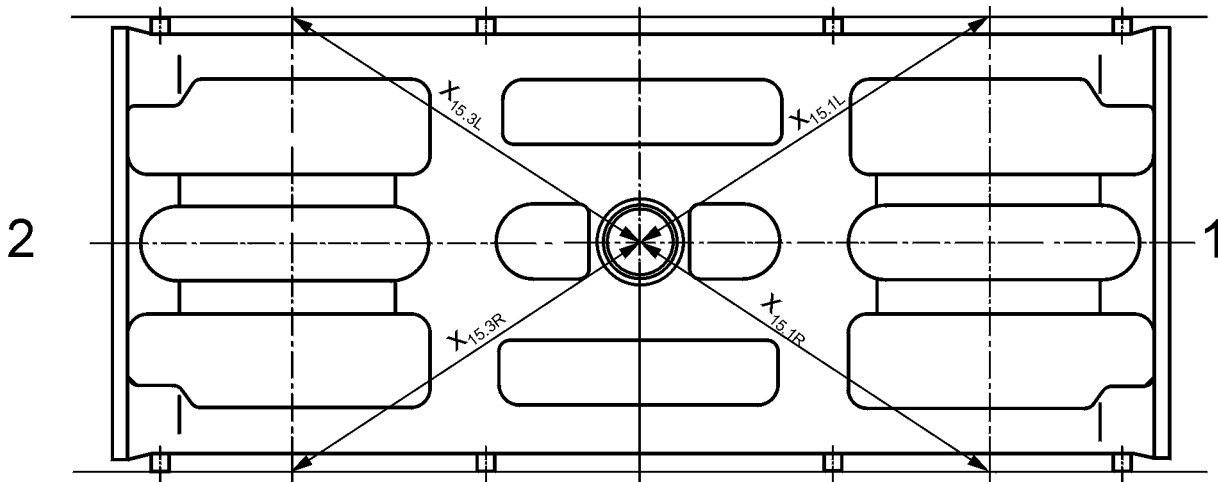


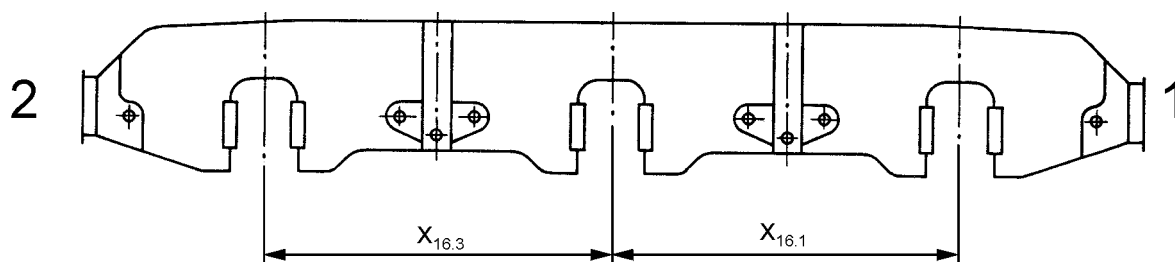
Figure 6

The dimensions $x_{15.1}$ and $x_{15.3}$ are measured on the right-hand and left-hand sides (see Figure 6).

Permissible difference for x_{15} : 4 mm

Measuring process 7

Wheel base

**Figure 7**

The distances between the pairs of suspension brackets are measured at measuring points $x_{16.1}$ and $x_{16.3}$ on the right-hand and left-hand sides (see Figure 7).

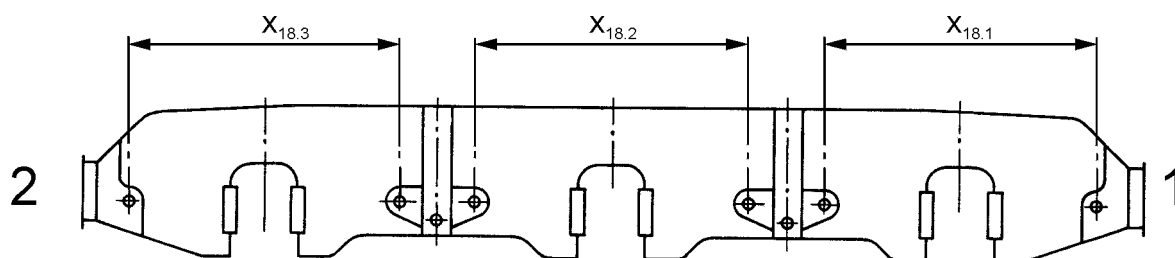
Limit deviations for x_{16} : ± 2 mm

Permissible difference between $x_{16.1 R}$ and $x_{16.1 L}$: 2 mm

and $x_{16.3 R}$ and $x_{16.3 L}$: 2 mm

Measuring process 8

Distance between the suspension bracket holes and/or the compensating beam holes.

**Figure 8**

The dimensions $x_{18.1}$ to $x_{18.3}$ are measured on the right-hand and left-hand sides (see Figure 8).

Limit deviations for x_{18} : ± 2 mm

Measuring process 9

Longitudinal distance between the axle-guard cheeks at the narrowest point relative to the vertical.

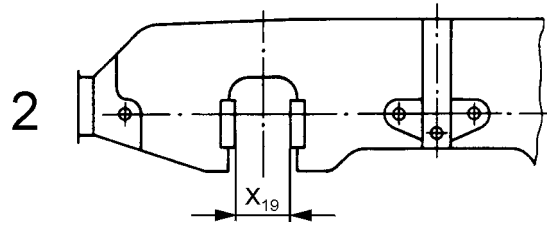


Figure 9

The distance x_{19} between the axle-guard cheeks of a pair of axle-guards is measured (see Figure 9).

Limit deviations for x_{19} : $\pm 1,5$ mm

Measuring process 10

Symmetry of the axle-guard cheeks.

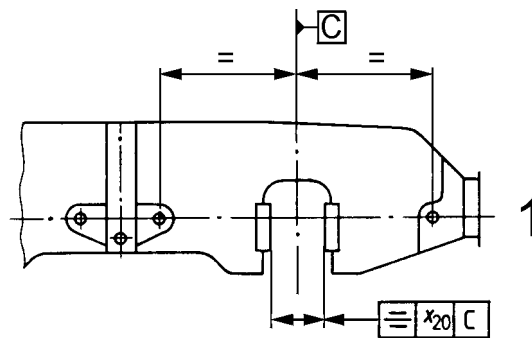


Figure 10

The symmetrical deviation of the axle-guard cheeks relative to the suspension bracket holes or the compensating beam holes is measured (see Figure 10).

Tolerance on symmetry x_{20} : ± 3 mm

Measuring process 11

Rectangularity of the axle-guard cheeks in the longitudinal direction.

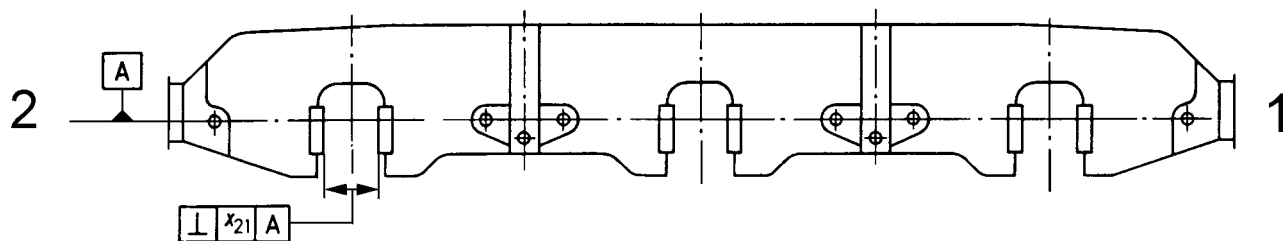


Figure 11

The deviation from rectangularity of the axle-guard cheeks relative to the holes of the suspension brackets or the horizontal compensating beam holes is measured (see Figure 11). The measured length is the length of the axle-guard plates.

Tolerance on rectangularity x_{21} : $\pm 1,5$ mm

Measuring process 12

Distance between the outside faces of the axle-guard cheeks and the outside faces of the suspension bracket bushings.

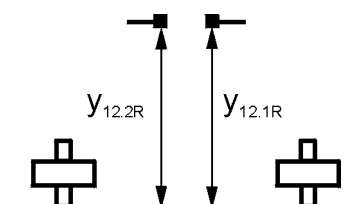


Figure 12

The distance between the outside face of the axle-guard cheeks and the suspension bracket reference axis is measured (see Figure 12).

Limit deviations for y_{12} : ± 2 mm

Measuring process 13

Distance between the pairs of axle-guard cheeks.

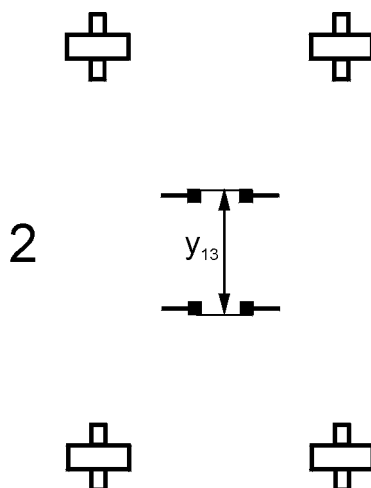


Figure 13

The distance y_{13} between the outside faces of the pairs of axle-guard cheeks is measured (see Figure 13).

Limit deviations for y_{13} : ± 2 mm

Measuring process 14

Rectangularity of the axle-guard cheeks.

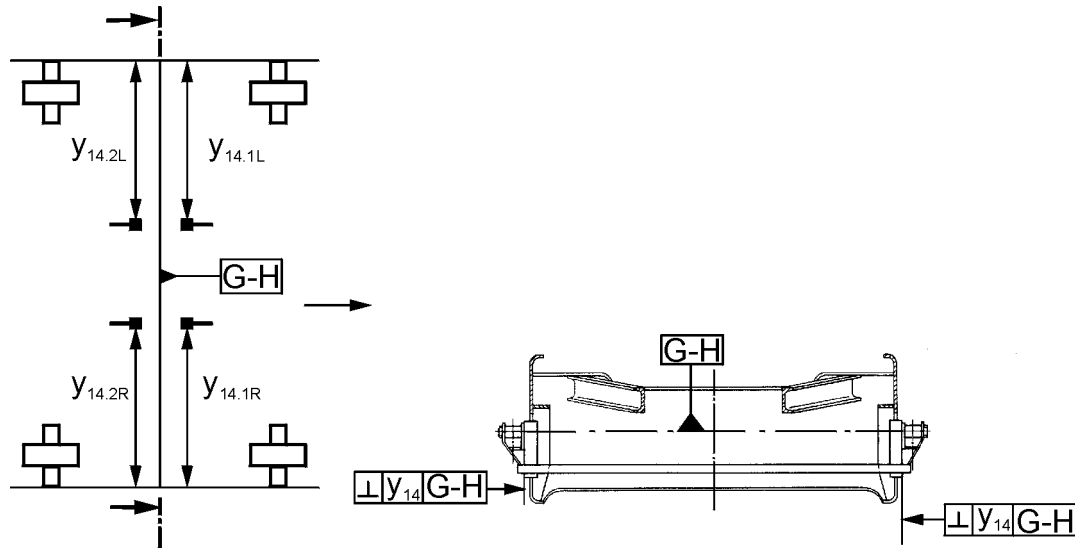


Figure 14

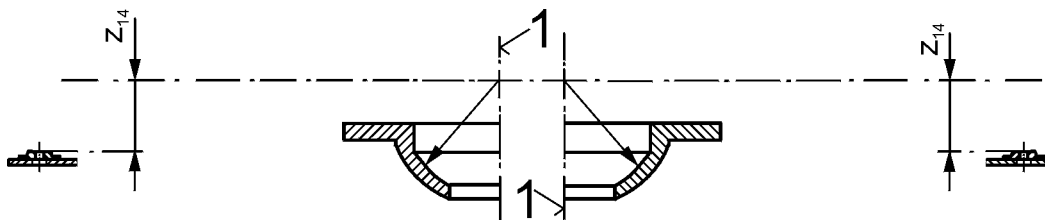
The deviation in rectangularity of the outside faces of the axle-guard cheeks is measured relative to a reference line (G-H) formed by joining up each opposite pair of suspension bracket bushings (see Figure 14).

The measured length is the length of the axle-guard cheeks. The measurement is carried out on every cheek.

Tolerance on rectangularity y_{14} : $\pm 1,5$ mm

Measuring process 15

Distance between the top of the side bearer and the centre of the bogie pivot.



Key

1 Centre of the bogie pivot

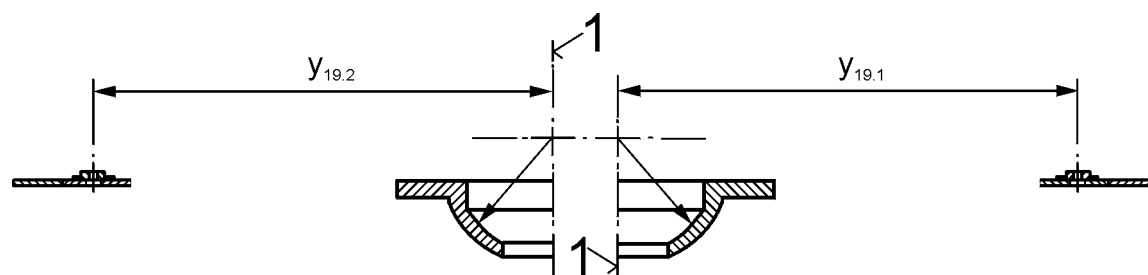
Figure 15

The distances z_{14} between the top of the side bearers and the centre of the bogie pivot with the bogie pivot insert fitted is measured (see Figure 15).

Limit deviations for z_{14} : ± 1 mm

Measuring process 16

Distance between the side bearers and the centre of the bogie pivot.

**Key**

1 Centre of the bogie pivot

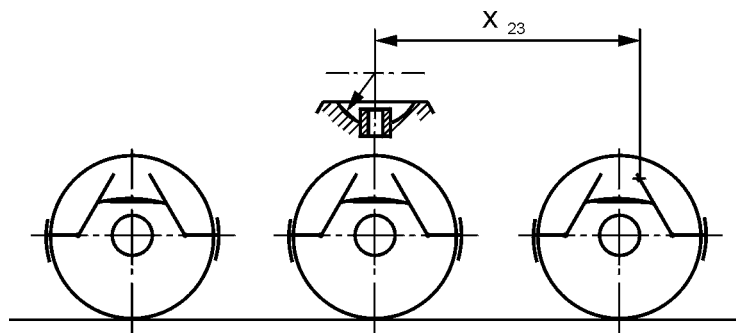
Figure 16

The distance between the centre of the side bearers and the centre of the bogie pivot is measured (see Figure 16).

Limit deviations for y_{19} : ± 2 mm

Measuring process 17

Distance between the brake rigging contact point and the centre of the bogie pivot.

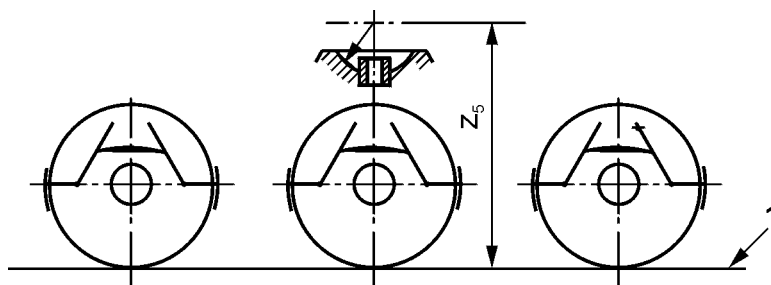
**Figure 17**

The distance x_{23} between the brake rigging contact point and the centre of the bogie pivot is measured (see Figure 17). For this, the brake blocks are resting on the wheel without any pressure applied.

Limit deviations for x_{23} : ± 25 mm

Measuring process 18

Distance between the centre of the bogie pivot and the top of the rail.



Key

1 Top of the rail SO

Figure 18

The distance z_5 between the centre of the bogie pivot and the top of the rail is measured with a vehicle tare weight of 31 t (see Figure 18).

Limit deviation for z_5 : mm

Annex A (normative)

Control sheet

Control sheet form

Annex A contains a control sheet form with the individual measuring processes. The structures of the control sheet are based on practical experience. This form shall be used in principle for documenting the measured results. In Table A.1 "Control sheet form", dotted lines have been provided in the "Measuring point/nominal dimension" column for recording the nominal dimensions of the drawings. In the "Actual limit deviations at the designated measuring points" column, there are spaces for recording the limit deviations or tolerances actually established. This makes statistical assessment possible.

Table A.1 — Control sheet

	Measuring process	Dimensions in mm		Actual limit deviations or tolerances at the designated measuring points						Remark	
		Measuring point nominal dimension	Limit deviation or tolerance		1	2	3	4	5		6
1	Position of the suspension bracket holes and the holes for the suspension compensating beam (see annex B)	z_n	± 3	R							
				L							
2	Distance between the theoretical plane of suspension bracket bushing pair and the centre of the bogie pivot.	z_D	± 2	R							
				L							
3	Distance between the outside front faces of the suspension brackets and the bearing points for the suspension compensating beams in the transverse direction of the bogie	y_{10}	± 2								
4	Position of the suspension bracket front faces and the bearing points for the compensating beam	y_{11}	± 2	R							
				L							
5	Diagonal distance between the centres of pairs of suspension brackets	x_{14}	3	R							
				L							
6	Concentricity of the bogie pivot	x_{15}	4	R							
				L							
7	Wheel base	x_{16}	± 2	R							
				L							
8	Distance between the suspension bracket holes and/or the compensating beam holes	x_{18}	± 2	R							
				L							
9	Longitudinal distance between the axle-guard cheeks at the narrowest point relative to the vertical	x_{19}	$\pm 1,5$	R							
				L							
10	Symmetry of the axle-guard cheeks	x_{20}	± 3	R							
				L							
11	Rectangularity of the axle-guard cheeks in the longitudinal direction	x_{21}	$\pm 1,5$	R							
				L							
12	Distance between the outside faces of the axle-guard cheeks and the outside faces of the suspension bracket bushings	y_{12}	± 2	R							
				L							
13	Distance between the pairs of axle-guard cheeks	y_{13}	± 2								
14	Rectangularity of the axle-guard cheeks	y_{14}	$\pm 1,5$	R							
				L							
15	Distance between the side bearers and the centre of the bogie pivot	z_{14}	± 1	R							
				L							

Table A.1 (concluded)

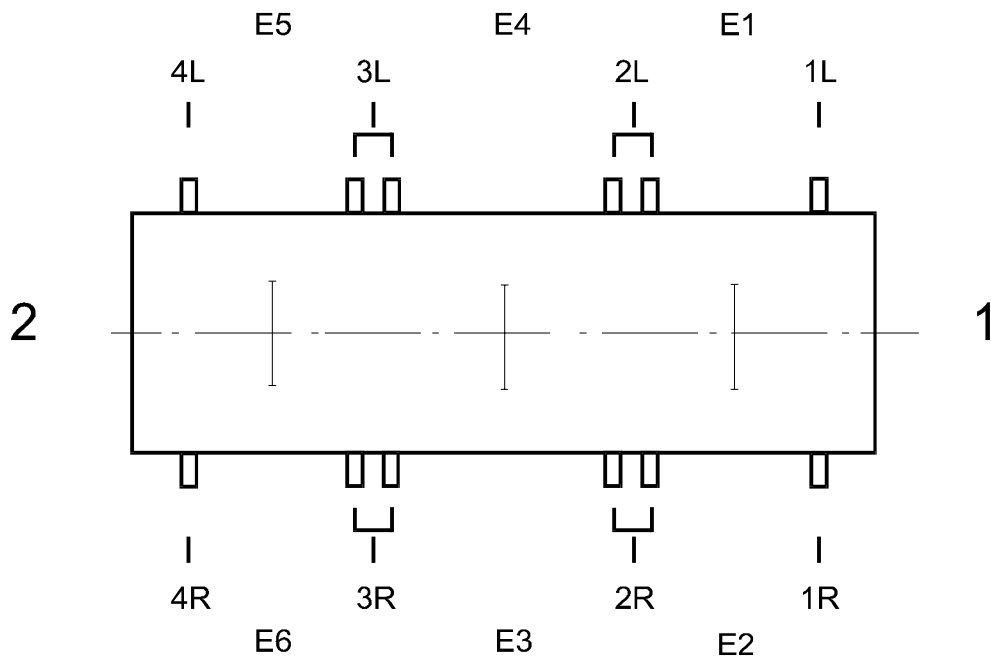
Measuring process		Dimensions in mm		Actual limit deviations or tolerances at the designated measuring points						Remark	
		Measuring point nominal dimension	Limit deviation or tolerance		1	2	3	4	5		6
16	Distance between the side bearers and the centre of the bogie pivot	Y ₁₉	± 2	R							
				L							
17	Distance between the brake rigging contact point and the centre of the bogie pivot	X ₂₃	± 25								
18	Distance between the centre of the bogie pivot and the top of the rail	Z ₅	+3 -5								
Company		Purchaser:		Underframe No.:			Bogie No.:				
				Date:	Name:	Date:	Name:				
		Order No.:		Acceptance:							
Sheet No.:		Drawing No.:		Approval:							

Annex B (informative)

Example of measuring process 1

Position of the suspension bracket holes and position of the holes for the compensating beam

The position of the suspension bracket holes and of the compensating beam holes should theoretically be determined via 12 measuring points. In practice, however, only 8 measuring points are taken into account as the tolerances on the position of the compensating beam holes compared with the fulcrum are negligible.



EN 13775-5:2004 (E)

Suspension bracket measuring point	Measured value [mm]	Mean value	Difference to mean value plane	Plane of suspension bracket pair
1L	144,0	142,0	0	E1
2L	140,0			
1R	143,0	142,5	0,5	E2
2R	142,0			
2R	142,0	141,5	-0,5	E3
3R	141,0			
2L	140,0	141,0	-1	E4
3L	141,5			
3L	141,5	141,5	-0,5	E5
4L	142,0			
3R	141,0	142,0	0	E6
4R	143,0			

The levelling plane is defined by points E1, E2 and E6. The values E3, E4 and E6 lie within the permissible tolerance to the levelling plane.

Bogie frame No.				
1 L				
2 L				
2 L				
3 L				
3 L				
4 L				
1 R				
2 R				
2 R				
3 R				
3 R				
4 R				

Bogie frame No.				
1 L				
2 L				
2 L				
3 L				
3 I				
4 L				
1 R				
2 R				
2 R				
3 R				
3 R				
4 R				

Bogie frame No.				
1 L				
2 L				
2 L				
3 L				
3 L				
4 L				
1 R				
2 R				
2 R				
3 R				
3 R				
4 R				

Bogie frame No.				
1 L				
2 L				
2 L				
3 L				
3 I				
4 L				
1 R				
2 R				
2 R				
3 R				
3 R				
4 R				

Annex C (informative)

Terminology

Terminology

English	French	German
Axle-box guide	glissière de boîte d'essieu	Radsatzlagerführung
Axle-box guide	glissière de boîte d'essieu	Radsatzhaltergleitführung
Axle-guard cheeks	glissières de plaque de garde	Radsatzhaltergleitbacken
Axle-guard pair	paire de plaques de garde	Radsatzhalterpaar
Bogie pivot	crapaudine	Drehpfanne
Bogie pivot centre	centre de la crapaudine	Drehfannemitte
Brake rigging	timonerie de frein	Bremsgestänge
Compensating beam	compensateur	Ausgleichshebel
Elastic side bearer	lisoir élastique	federndes Gleitstück
Front face of suspension bracket	face extrême du support de suspension	Federbockstirnfläche
Rigid side bearer	lisoir fixe	festes Gleitstück
Running gear	organe de roulement	Laufwerk
Side bearer	lisoir	Gleitstück
Support surface of suspension	surface d'appui de la suspension	Federabstützungsfläche
Suspension bracket	support de suspension	Federbock
Suspension bracket hole	alésage du support de suspension	Federbockbohrung
Suspension bracket pair	paire de support de suspension	Federbockpaar
Suspension stop	butée de support	Federfangbock
Suspension bracket bushing	centrage de support suspension	Federbockbuchse
Wheel base	empattement	Radstand

Bibliography

- [1] prEN 1277:1997, *Logistics - Structure, basic terms and definitions in logistics*.
- [2] EN 13775-2, *Railway applications — Measurement of new and modified freight wagons — Part 2: Freight wagons with bogies*.
- [3] EN 13775-3, *Railway applications — Measurement of new and modified freight wagons — Part 3: Freight wagons with 2 wheelsets*.
- [4] EN 13775-4, *Railway applications — Measurement of new and modified freight wagons — Part 5: Bogies with 2 wheelsets*.
- [5] EN 13775-6, *Railway applications — Measurement of new and modified freight wagons — Part 6: Multiple and articulated freight wagons*.

BSI — British Standards Institution

BSI is the independent national body responsible for preparing British Standards. It presents the UK view on standards in Europe and at the international level. It is incorporated by Royal Charter.

Revisions

British Standards are updated by amendment or revision. Users of British Standards should make sure that they possess the latest amendments or editions.

It is the constant aim of BSI to improve the quality of our products and services. We would be grateful if anyone finding an inaccuracy or ambiguity while using this British Standard would inform the Secretary of the technical committee responsible, the identity of which can be found on the inside front cover.
Tel: +44 (0)20 8996 9000. Fax: +44 (0)20 8996 7400.

BSI offers members an individual updating service called PLUS which ensures that subscribers automatically receive the latest editions of standards.

Buying standards

Orders for all BSI, international and foreign standards publications should be addressed to Customer Services. Tel: +44 (0)20 8996 9001.
Fax: +44 (0)20 8996 7001. Email: orders@bsi-global.com. Standards are also available from the BSI website at <http://www.bsi-global.com>.

In response to orders for international standards, it is BSI policy to supply the BSI implementation of those that have been published as British Standards, unless otherwise requested.

Information on standards

BSI provides a wide range of information on national, European and international standards through its Library and its Technical Help to Exporters Service. Various BSI electronic information services are also available which give details on all its products and services. Contact the Information Centre.
Tel: +44 (0)20 8996 7111. Fax: +44 (0)20 8996 7048. Email: info@bsi-global.com.

Subscribing members of BSI are kept up to date with standards developments and receive substantial discounts on the purchase price of standards. For details of these and other benefits contact Membership Administration.
Tel: +44 (0)20 8996 7002. Fax: +44 (0)20 8996 7001.
Email: membership@bsi-global.com.

Information regarding online access to British Standards via British Standards Online can be found at <http://www.bsi-global.com/bsonline>.

Further information about BSI is available on the BSI website at <http://www.bsi-global.com>.

Copyright

Copyright subsists in all BSI publications. BSI also holds the copyright, in the UK, of the publications of the international standardization bodies. Except as permitted under the Copyright, Designs and Patents Act 1988 no extract may be reproduced, stored in a retrieval system or transmitted in any form or by any means – electronic, photocopying, recording or otherwise – without prior written permission from BSI.

This does not preclude the free use, in the course of implementing the standard, of necessary details such as symbols, and size, type or grade designations. If these details are to be used for any other purpose than implementation then the prior written permission of BSI must be obtained.

Details and advice can be obtained from the Copyright & Licensing Manager.
Tel: +44 (0)20 8996 7070. Fax: +44 (0)20 8996 7553.
Email: copyright@bsi-global.com.