

Products and systems for the protection and repair of concrete structures — Test methods — Determination of workability —

Part 2: Test for flow of grout or mortar

The European Standard EN 13395-2:2002 has the status of a
British Standard

ICS 91.080.40; 91.100.10

National foreword

This British Standard is the official English language version of EN 13395-2:2002.

The UK participation in its preparation was entrusted by Technical Committee B/517, Concrete, to Subcommittee B/517/8, Protection and repair of concrete structures, which has the responsibility to:

- aid enquirers to understand the text;
- present to the responsible international/European committee any enquiries on the interpretation, or proposals for change, and keep the UK interests informed;
- monitor related international and European developments and promulgate them in the UK.

A list of organizations represented on this subcommittee can be obtained on request to its secretary.

Cross-references

The British Standards which implement international or European publications referred to in this document may be found in the *BSI Catalogue* under the section entitled “International Standards Correspondence Index”, or by using the “Search” facility of the *BSI Electronic Catalogue* or of British Standards Online.

This publication does not purport to include all the necessary provisions of a contract. Users are responsible for their correct application.

Compliance with a British Standard does not of itself confer immunity from legal obligations.

This British Standard, having been prepared under the direction of the Building and Civil Engineering Sector Policy and Strategy Committee, was published under the authority of the Standards Policy and Strategy Committee on 16 July 2002

Summary of pages

This document comprises a front cover, an inside front cover, the EN title page, pages 2 to 6, an inside back cover and a back cover.

The BSI copyright date displayed in this document indicates when the document was last issued.

Amendments issued since publication

Amd. No.	Date	Comments

© BSI 16 July 2002

ISBN 0 580 40090 5

EUROPEAN STANDARD

EN 13395-2

NORME EUROPÉENNE

EUROPÄISCHE NORM

May 2002

ICS 91.080.40; 91.100.10

English version

Products and systems for the protection and repair of concrete structures - Test methods - Determination of workability - Part 2: Test for flow of grout or mortar

Produits et systèmes de protection et de réparation des structures en béton - Méthodes d'essai - Détermination de l'ouvrabilité - Partie 2: Essai d'écoulement des coulis ou mortiers

Produkte und Systeme für den Schutz und die Instandsetzung von Betontragwerken - Prüfverfahren - Bestimmung der Verarbeitbarkeit - Teil 2: Prüfung des Fließverhaltens von Vergussmörtel, Feinmörtel oder Mörtel

This European Standard was approved by CEN on 4 January 2002.

CEN members are bound to comply with the CEN/CENELEC Internal Regulations which stipulate the conditions for giving this European Standard the status of a national standard without any alteration. Up-to-date lists and bibliographical references concerning such national standards may be obtained on application to the Management Centre or to any CEN member.

This European Standard exists in three official versions (English, French, German). A version in any other language made by translation under the responsibility of a CEN member into its own language and notified to the Management Centre has the same status as the official versions.

CEN members are the national standards bodies of Austria, Belgium, Czech Republic, Denmark, Finland, France, Germany, Greece, Iceland, Ireland, Italy, Luxembourg, Malta, Netherlands, Norway, Portugal, Spain, Sweden, Switzerland and United Kingdom.



EUROPEAN COMMITTEE FOR STANDARDIZATION
COMITÉ EUROPÉEN DE NORMALISATION
EUROPÄISCHES KOMITEE FÜR NORMUNG

Management Centre: rue de Stassart, 36 B-1050 Brussels

Contents

	page
Foreword.....	3
1 Scope	4
2 Normative references	4
3 Terms and definitions.....	4
4 Principle.....	4
5 Equipment	4
6 Preparation	5
7 Test Procedure.....	5
8 Test report	5

Foreword

This document EN 13395-2:2002 has been prepared by Technical Committee CEN/TC 104 "Concrete and related products", the secretariat of which is held by DIN.

This European Standard shall be given the status of a national standard, either by publication of an identical text or by endorsement, at the latest by November 2002, and conflicting national standards shall be withdrawn at the latest by December 2002.

This European Standard is one of a series dealing with products and systems for the protection and repair of concrete structures. It describes a method for determining the flow characteristics of repair grouts and mortars.

It is one of a series of inter-related parts dealing with the workability of repair grouts, mortars and concretes. The other parts are:

prEN 13395-1, *Products and systems for the protection and repair of concrete structures - Test methods - Determination of workability - Part 1: Test for flow of thixotropic mortars.*

EN 13395-3, *Products and systems for the protection and repair of concrete structures - Test methods - Determination of workability - Part 3: Test for flow of repair concrete.*

EN 13395-4, *Products and systems for the protection and repair of concrete structures - Test methods - Determination of workability - Part 4: Application of repair mortar overhead.*

According to the CEN/CENELEC Internal Regulations, the national standards organizations of the following countries are bound to implement this European Standard: Austria, Belgium, Czech Republic, Denmark, Finland, France, Germany, Greece, Iceland, Ireland, Italy, Luxembourg, Malta, Netherlands, Norway, Portugal, Spain, Sweden, Switzerland and the United Kingdom.

1 Scope

This European Standard specifies a method for determining the workability (or consistence) of flowing-grade hydraulic cement mortars CC, polymer modified hydraulic cement mortars PCC and polymer bound mortars PC for the protection and repair of concrete, as defined in EN 1504-1.

The method is suitable for high flow grouts or mortars that have a maximum aggregate size of 4 mm.

2 Normative references

This European Standard incorporates by dated or undated reference, provisions from other publications. These Normative references are cited at the appropriate places in the text, and the publications are listed hereafter. For dated references, subsequent amendments to or revisions of any of these publications apply to this European Standard only when incorporated in it by amendment or revision. For undated references the latest edition of the publication referred to applies (including amendments).

EN 196-1, *Methods of testing cement - Part 1: Determination of strength*.

EN 1504-1, *Products and systems for the protection and repair of concrete structures - Definitions, requirements, quality control and evaluation of conformity - Part 1: Definitions*.

3 Terms and definitions

For the purposes of this European Standard, the terms and definitions contained in EN 1504-1 and the following apply.

3.1 flow value

distance that the grout or mortar has travelled along a trough after 30 s

4 Principle

The principle of this test is to provide a relevant method to evaluate the workability of flowing repair grouts or mortars in the laboratory, which reflects the actual workability requirements for site repair works. The test measures the flow of a fixed quantity of the grout or mortar along a defined trough after 30 s. The distance that the grout or mortar has travelled in that time is the flow value.

NOTE The method of test is sufficiently robust as to be suitable for use as a quality control technique in on-site laboratories.

5 Equipment

5.1 Mixer : Unless stated otherwise by the manufacturer, the equipment to be used for mixing the constituents for the grout shall be the standard type of mixer specified for producing cement mortars in EN 196-1.

5.2 Grout flow trough : A grout flow trough fabricated in accordance with Figure 1.

5.3 Measuring jug : Capable of taking the required one litre of grout used in the grout flow trough.

5.4 Standard laboratory climate of (21 ± 2) °C and (60 ± 10) % RH.

6 Preparation

All materials shall be conditioned in the standard laboratory climate (5.4) for a period of not less than 24 h prior to mixing.

The proportioning and mixing of the repair grout shall be carried out in accordance with the manufacturer's instructions.

The grout flow trough shall be brought into the climatic chamber for a period of 24 h prior to use. The grout flow trough shall be positioned in its final testing position by adjusting the screws until the base is level.

7 Test Procedure

The flow of the grout shall be determined at the standard laboratory temperature (5.4) 5 min, 15 min, 30 min and 60 min after mixing. The mixed mortar shall be agitated in the grout mixer for five seconds prior to testing.

NOTE In addition, the flow value for the mortar may be determined at other temperatures for special applications.

The surfaces of the grout flow trough shall be moistened with a damp cloth within one minute of carrying out the test. A one litre sample of grout shall be poured into the charging hopper of the grout flow trough, ensuring the surface of the grout is even; the surface should be gently rodded to level the surface if required.

The pull-rod shall be pulled upwards gently in a smooth operation after 30 s of charging the hopper, allowing the grout to flow evenly down the trough.

The flow of the grout shall be measured as the horizontal distance from the centre of the discharge outlet to the end of the grout after a period of 30 s (the "flow value"). If the grout is still moving along the grout flow trough, this fact should be noted.

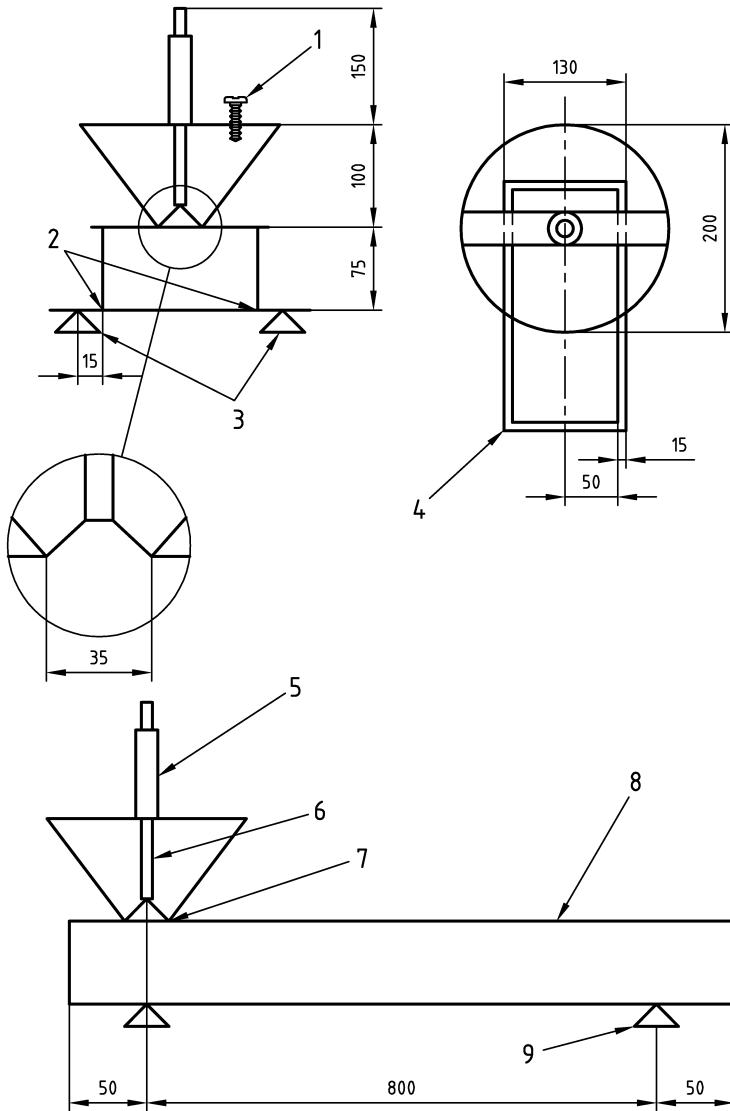
8 Test report

The test report shall include the following information:

- a) a reference to the test method standard;
- b) name and address of the test laboratory;
- c) identification number and date of the test;
- d) name and address of the manufacturer or supplier of the product;
- e) name and identification marks or batch number of the product, including the maximum aggregate size;
- f) date of supply of the product;
- g) date of preparation of the test specimens and any deviation from the prescribed method of preparation;
- h) conditions of storage of prepared specimens prior to test, including the period of delay between completion of mixing and testing and evidence of segregation and bleeding;
- i) date of test and details of the test equipment used, including the make, type and capacity and the calibration details or the identification number of the apparatus;
- j) the test results, including the distance of flow of the grout after 30 s (the "flow value") and whether the grout is still moving;
- k) precision data;

l) date of test report and signature.

Dimensions in millimetres
Tolerances to $\pm 0,5$ mm



Key

- | | | | |
|---|------------------|---|---------------|
| 1 | Adjustable screw | 6 | Pull-rod |
| 2 | 5 mm | 7 | Weld |
| 3 | Adjustable feet | 8 | 2 mm tinplate |
| 4 | Flange | 9 | Fixed foot |
| 5 | Tube | | |

Figure 1 — Grout flow trough apparatus

BSI — British Standards Institution

BSI is the independent national body responsible for preparing British Standards. It presents the UK view on standards in Europe and at the international level. It is incorporated by Royal Charter.

Revisions

British Standards are updated by amendment or revision. Users of British Standards should make sure that they possess the latest amendments or editions.

It is the constant aim of BSI to improve the quality of our products and services. We would be grateful if anyone finding an inaccuracy or ambiguity while using this British Standard would inform the Secretary of the technical committee responsible, the identity of which can be found on the inside front cover.
Tel: +44 (0)20 8996 9000. Fax: +44 (0)20 8996 7400.

BSI offers members an individual updating service called PLUS which ensures that subscribers automatically receive the latest editions of standards.

Buying standards

Orders for all BSI, international and foreign standards publications should be addressed to Customer Services. Tel: +44 (0)20 8996 9001.
Fax: +44 (0)20 8996 7001. Email: orders@bsi-global.com. Standards are also available from the BSI website at <http://www.bsi-global.com>.

In response to orders for international standards, it is BSI policy to supply the BSI implementation of those that have been published as British Standards, unless otherwise requested.

Information on standards

BSI provides a wide range of information on national, European and international standards through its Library and its Technical Help to Exporters Service. Various BSI electronic information services are also available which give details on all its products and services. Contact the Information Centre.
Tel: +44 (0)20 8996 7111. Fax: +44 (0)20 8996 7048. Email: info@bsi-global.com.

Subscribing members of BSI are kept up to date with standards developments and receive substantial discounts on the purchase price of standards. For details of these and other benefits contact Membership Administration.
Tel: +44 (0)20 8996 7002. Fax: +44 (0)20 8996 7001.
Email: membership@bsi-global.com.

Information regarding online access to British Standards via British Standards Online can be found at <http://www.bsi-global.com/bsonline>.

Further information about BSI is available on the BSI website at <http://www.bsi-global.com>.

Copyright

Copyright subsists in all BSI publications. BSI also holds the copyright, in the UK, of the publications of the international standardization bodies. Except as permitted under the Copyright, Designs and Patents Act 1988 no extract may be reproduced, stored in a retrieval system or transmitted in any form or by any means – electronic, photocopying, recording or otherwise – without prior written permission from BSI.

This does not preclude the free use, in the course of implementing the standard, of necessary details such as symbols, and size, type or grade designations. If these details are to be used for any other purpose than implementation then the prior written permission of BSI must be obtained.

Details and advice can be obtained from the Copyright & Licensing Manager.
Tel: +44 (0)20 8996 7070. Fax: +44 (0)20 8996 7553.
Email: copyright@bsi-global.com.