

Plastics piping systems for buried and above-ground pressure systems for water for general purposes, drainage and sewerage — Polyethylene (PE) —

Part 3: Fittings

The European Standard EN 13244-3:2002 has the status of a
British Standard

ICS 23.040.45; 93.030

National foreword

This British Standard is the official English language version of EN 13244-3:2002. No existing British Standard will be superseded by implementation of this part of this European Standard.

NOTE 1 Collectively, EN 13244-1, EN 13244-2 and EN 13244-5 supersede:

— BS 6437:1984, *Specification for polyethylene pipes (type 50) in metric diameters for general purposes*;

which will be declared obsolescent by December 2004.

NOTE 2 The UK water industry has indicated that following the publication of this British Standard, the following Water Industry Specifications will be declared obsolescent by March 2005 and retained for reference where applicable:

— WIS 4-32-14, *Specification for PE 80 and PE 100 electrofusion fittings for nominal sizes up to and including 630 mm¹⁾*;

— WIS 4-32-15, *Specification for PE 80 and PE 100 spigot fittings and drawn bends for nominal sizes up to and including 1 000 mm¹⁾*.

The UK participation in its preparation was entrusted by Technical Committee PRI/88 (previously PRI/61), Plastics piping systems, to Subcommittee PRI/88/2 (previously PRI/61/2), Plastics piping systems for pressure applications, which has the responsibility to:

- aid enquirers to understand the text;
- present to the responsible international/European committee any enquiries on the interpretation, or proposals for change, and keep the UK interests informed;
- monitor related international and European developments and promulgate them in the UK.

A list of organizations represented on this subcommittee can be obtained on request to its secretary.

NOTE 3 It was decided not to proceed with the publication of prEN 13244-6, *Recommended practice for installation* and that existing national practices would be applicable. In the UK, in the absence of a British Standard covering installation, it is the opinion of Technical Committee PRI/88, Plastics piping systems, that reference to the *Polyethylene Pipe Systems Manual*²⁾, a joint publication of WRc and BPF Plastic Pipes Group represents established UK practice.

NOTE 4 Part 7 has been prepared as a CEN/TS, to allow further development. CEN/TS 13244-7 is not mandatory under the Public Procurement Directive.

Attention is drawn to the following statutory regulations:

Health and Safety at Work etc. Act 1974 and subsequent regulations.

Attention is also drawn to any appropriate safety precautions. It is assumed in the drafting of a standard that the execution of its provisions is entrusted to appropriately qualified people.

¹⁾ Published by WRc, Swindon.

²⁾ WRc/BPF PLASTIC PIPES GROUP. *Polyethylene Pipe Systems Manual*. Swindon: WRc, 2002.

Amendments issued since publication

Amd. No.	Date	Comments

This British Standard, was published under the authority of the Standards Policy and Strategy Committee on 11 December 2003

© BSI 11 December 2003

ISBN 0 580 43028 6

The UK National annex NA attached to this standard provides additional information on the selection and installation of piping systems and components in the UK.

Cross-references

The British Standards which implement international or European publications referred to in this document may be found in the *BSI Catalogue* under the section entitled “International Standards Correspondence Index”, or by using the “Search” facility of the *BSI Electronic Catalogue* or of British Standards Online.

This publication does not purport to include all the necessary provisions of a contract. Users are responsible for its correct application.

Compliance with a British Standard does not of itself confer immunity from legal obligations.

Summary of pages

This document comprises a front cover, an inside front cover, pages i and ii, the EN title page, pages 2 to 29 and a back cover.

The BSI copyright notice displayed in this document indicates when the document was last issued.

ICS 23.040.45; 93.030

English version

**Plastics piping systems for buried and above-ground pressure systems for water for general purposes, drainage and sewerage
- Polyethylene (PE) - Part 3: Fittings**

Systèmes de canalisations en plastique pour les applications générales de transport d'eau, de branchement et de collecteurs d'assainissement, enterrés sous pression
- Polyéthylène (PE) - Partie 3: Raccords

Kunststoff-Rohrleitungssysteme für erd- und oberirdisch verlegte Druckrohrleitungen für Brauchwasser, Entwässerung und Abwasser - Polyethylen (PE) - Teil 3: Formstücke

This European Standard was approved by CEN on 16 October 2002.

CEN members are bound to comply with the CEN/CENELEC Internal Regulations which stipulate the conditions for giving this European Standard the status of a national standard without any alteration. Up-to-date lists and bibliographical references concerning such national standards may be obtained on application to the Management Centre or to any CEN member.

This European Standard exists in three official versions (English, French, German). A version in any other language made by translation under the responsibility of a CEN member into its own language and notified to the Management Centre has the same status as the official versions.

CEN members are the national standards bodies of Austria, Belgium, Czech Republic, Denmark, Finland, France, Germany, Greece, Iceland, Ireland, Italy, Luxembourg, Malta, Netherlands, Norway, Portugal, Spain, Sweden, Switzerland and United Kingdom.



EUROPEAN COMMITTEE FOR STANDARDIZATION
COMITÉ EUROPÉEN DE NORMALISATION
EUROPÄISCHES KOMITEE FÜR NORMUNG

Management Centre: rue de Stassart, 36 B-1050 Brussels

Contents

	page
Foreword.....	4
Introduction	6
1 Scope	7
2 Normative references	8
3 Definitions, symbols and abbreviations.....	9
4 Material.....	9
4.1 PE compound.....	9
4.2 Material for non-polyethylene parts.....	10
4.2.1 General.....	10
4.2.2 Metal parts	10
4.2.3 Elastomers.....	10
4.2.4 Other materials.....	10
5 General characteristics	10
5.1 Appearance.....	10
5.2 Design	10
5.3 Colour.....	10
5.4 Electrical characteristics for electrofusion fittings.....	11
5.5 Appearance of factory made joints.....	11
6 Geometrical characteristics.....	11
6.1 Measurement of dimensions	11
6.2 Dimensions of electrofusion sockets	11
6.2.1 Diameters and lengths of electrofusion sockets.....	11
6.2.2 Wall thicknesses	13
6.3 Dimensions of spigotted fittings.....	13
6.4 Dimensions of socket fusion fittings.....	15
6.5 Socketed pipe.....	16
6.5.1 Dimensions and tolerances of the socket and length of spigot end.....	17
6.5.2 Equations for calculating the dimensions of sockets of non-end-load-resistant fittings for use with pipes up to 6 m lengths.....	17
6.6 Dimensions of mechanical fittings.....	17
6.7 Dimensions of loose backing flanges and flange adapters	17
7 Mechanical characteristics	17
7.1 General.....	17
7.2 Conditioning.....	17
7.3 Requirements	17
7.4 Retest in case of failure at 80 °C	18
7.5 Pressure drop.....	19
8 Physical characteristics	19
8.1 Conditioning.....	19
8.2 Requirements	19
9 Chemical characteristics of fittings in contact with chemicals	20
10 Sealing rings.....	20
11 Performance requirements	20
12 Marking	20
12.1 General.....	20

12.2	Minimum required marking of fittings	21
12.3	Minimum required marking on a label	21
12.4	Fusion system recognition	21
13	Packaging	22
Annex A (normative)	Socket fusion fittings	23
Annex B (informative)	Examples of typical terminal connection for electrofusion fittings	25
Bibliography	28

EN 13244-3:2002 (E)

Foreword

This document (EN 13244-3:2002) has been prepared by Technical Committee CEN/TC 155 "Plastics piping systems and ducting systems", the secretariat of which is held by NEN.

This European Standard shall be given the status of a national standard, either by publication of an identical text or by endorsement, at the latest by June 2003, and conflicting national standards shall be withdrawn at the latest by December 2004.

For components which have conformed to the relevant national standard before December 2002, as shown by the manufacturer or by a certification body, the national standard may continue to be applied until December 2004.

It has been prepared in liaison with CEN/TC 165 "*Waste water engineering*".

This European Standard is a Part of a System Standard for plastics piping systems of a particular material for a specified application. There are a number of such System Standards.

System Standards are based on the results of the work being undertaken in ISO/TC 138 "*Plastics pipes, fittings and valves for the transport of fluids*", which is a Technical Committee of the International Organization for Standardization (ISO).

They are supported by separate standards on test methods to which references are made throughout the System Standard.

The System Standards are consistent with standards on general functional requirements and standards on installation practices.

EN 13244 consists of the following Parts, under the general title *Plastics piping systems for buried and above-ground pressure systems for water for general purposes, drainage and sewerage — Polyethylene (PE)*:

- *Part 1: General*
- *Part 2: Pipes*
- *Part 3: Fittings (this standard)*
- *Part 4: Valves*
- *Part 5: Fitness for purpose of the system*
- *Part 7: Guidance for the assessment of conformity (to be published as a CEN/TS)*

NOTE It was decided not to publish a Part 6: Recommended practice for installation. Instead, existing national practices would be applicable.

This Part of EN 13244 includes the following:

- Annex A (normative): Socket fusion fittings;
- Annex B (informative): Examples of typical terminal connection for electrofusion fittings;
- Bibliography.

System Standards for piping systems of other plastics materials used for the conveyance of water, drainage and sewerage include the following:

prEN 14364, *Plastics piping systems for pressure and non-pressure drainage and sewerage — Glass-reinforced thermosetting (GRP) plastics based on polyester resin (UP)*.

EN 1456, *Plastics piping systems for buried and above-ground drainage and sewerage under pressure — Unplasticized poly(vinyl chloride) (PVC-U)*.

According to the CEN/CENELEC Internal Regulations, the national standards organizations of the following countries are bound to implement this European Standard: Austria, Belgium, Czech Republic, Denmark, Finland, France, Germany, Greece, Iceland, Ireland, Italy, Luxembourg, Malta, Netherlands, Norway, Portugal, Spain, Sweden, Switzerland and the United Kingdom.

EN 13244-3:2002 (E)**Introduction**

EN 13244, of which this is Part 3, specifies the requirements for a piping system and its components when made from polyethylene (PE), intended to be used for buried and above-ground pressure systems for water for general purposes, drainage and sewerage, including vacuum systems.

Requirements and test methods for material and components, other than fittings, are specified in EN 13244-1, EN 13244-2 and EN 13244-4. Characteristics for fitness for purpose are covered in EN 13244-5 and prCEN/TS 13244-7 gives guidance for the assessment of conformity.

This Part of EN 13244 covers the characteristics of fittings.

1 Scope

This Part of EN 13244 specifies the characteristics of fittings made from polyethylene (PE) intended for buried and above-ground pressure systems for water for general purposes, drainage and sewerage. It is also applicable for vacuum sewer systems.

NOTE 1 Water for general purposes is not intended for human consumption and components conforming to this standard should not be used in systems conveying water for human consumption. For PE components intended for the conveyance of water intended for human consumption and raw water prior to treatment, see EN 12201.

It also specifies the test parameters for the test methods referred to in this standard.

In conjunction with other Parts of EN 13244 (see Foreword), it is applicable to PE fittings, their joints and to joints with components of PE and other materials intended to be used under the following conditions:

- buried in the ground;
- sea outfalls;
- laid in water;
- above-ground, including pipes suspended below bridges;
- a maximum operating pressure, MOP, up to and including 25 bar ¹⁾;
- an operating temperature of 20 °C as a reference temperature.

NOTE 2 For applications operating at constant temperatures greater than 20 °C and up to 40 °C, see annex A of EN 13244-1:2002.

EN 13244 covers a range of maximum operating pressures and gives requirements concerning colours and additives.

NOTE 3 It is the responsibility of the purchaser or specifier to make the appropriate selections from these aspects, taking into account their particular requirements and any relevant national guidance or regulations and installation practices or codes.

These fittings can be of the following types:

- a) fusion fittings
 - 1) butt fusion fittings;
 - 2) socket fusion fittings;
 - 3) electrofusion fittings.
- b) mechanical fittings
 - 1) compression fittings.
- c) flanged fittings.

1) 1 bar = 10⁵ N/m².

EN 13244-3:2002 (E)**2 Normative references**

This European Standard incorporates by dated or undated reference, provisions from other publications. These normative references are cited at the appropriate places in the text, and the publications are listed hereafter. For dated references, subsequent amendments to or revisions of any of these publications apply to this European Standard only when incorporated in it by amendment or revision. For undated references the latest edition of the publication referred to applies (including amendments).

EN 681-1, *Elastomeric seals — Material requirements for pipe joint seals used in water and drainage applications — Part 1: Vulcanized rubber.*

EN 681-2, *Elastomeric seals — Material requirements for pipe joint seals used in water and drainage applications — Part 2: Thermoplastics elastomers.*

EN 728, *Plastics piping and ducting systems — Polyolefin pipes and fittings — Determination of oxidation induction time.*

EN 921:1994, *Plastics piping systems — Thermoplastics pipes — Determination of resistance to internal pressure at constant temperature.*

EN 13244-1:2002, *Plastics piping systems for buried and above-ground pressure systems for water for general purposes, drainage and sewerage — Polyethylene (PE) — Part 1: General.*

EN 13244-2:2002, *Plastics piping systems for buried and above-ground pressure systems for water for general purposes, drainage and sewerage — Polyethylene (PE) — Part 2: Pipes.*

EN 13244-5:2002, *Plastics piping systems for buried and above-ground pressure systems for water for general purposes, drainage and sewerage — Polyethylene (PE) — Part 5: Fitness for purpose of the system.*

EN ISO 1133:1999, *Plastics — Determination of the melt-mass flow rate (MFR) and the melt-volume flow rate (MVR) of thermoplastics.*

prEN ISO 3126:1999, *Plastics piping systems — Plastics piping components — Measurement and determination of dimensions (revision of prEN 496:1991 and ISO 3126:1974) (ISO/DIS 3126:1999).*

ISO 4059:1978, *Polyethylene (PE) pipes — Pressure drop in mechanical pipe-jointing systems — Method of test and requirements.*

ISO 4433-1:1997, *Thermoplastics pipes — Resistance to liquid chemicals — Classification — Part 1: Immersion test method.*

ISO 4433-2:1997, *Thermoplastics pipes — Resistance to liquid chemicals — Classification — Part 2: Polyolefin pipes.*

ISO 9624, *Thermoplastics pipes for fluids under pressure — Mating dimensions of flange adapters and loose backing flanges.*

ISO 13953:2001, *Polyethylene (PE) pipes and fittings — Determination of the tensile strength and failure mode of test pieces from a butt-fused joint.*

ISO 13954:1997, *Plastics pipes and fittings — Peel decohesion test for polyethylene (PE) electrofusion assemblies of nominal outside diameter greater than or equal to 90 mm.*

ISO 13955:1997, *Plastics pipes and fittings — Crushing decohesion test for polyethylene (PE) electrofusion assemblies.*

3 Definitions, symbols and abbreviations

For the purposes of this European Standard the terms, definitions, symbols and abbreviations given in EN 13244-1 together with the following apply.

3.1

electrofusion socket fitting

polyethylene (PE) fitting which contains one or more integral heating elements, that are capable of transforming electrical energy into heat to realise a fusion joint with a spigot end or a pipe

3.2

spigot end fitting

polyethylene (PE) fitting where the outside diameter of the spigot length is equal to the nominal outside diameter, d_n , of the corresponding pipe

3.3

mechanical fitting

fitting for assembling polyethylene (PE) pipe to an other PE pipe or any other element of the piping system. The mechanical fitting may be supplied for field assembly or pre-assembled by the manufacturer. The fitting generally includes a compression part to provide pressure integrity, leaktightness and resistance to end loads. A support sleeve inserted into the pipe bore provides a permanent support for the PE pipe to prevent creep in the pipe wall under radial compressive forces

NOTE 1 The metallic parts of the fitting can be assembled to metallic pipes by screw threads, compression joints, welded or flanged connections, including PE flanges. The fitting can allow either a dismantable or permanently assembled joint.

NOTE 2 In some cases the supporting ring can also act as a grip ring.

3.4

push-fit fitting

fitting which includes one or more integral sealing rings, located in a groove (or grooves) in a preformed socket, which is assembled by inserting a chamfered and lubricated spigot, in an axial direction, past the sealing ring(s), to a recommended depth. Both end-load-resistant and non-end-load-resistant designs are available

3.5

fabricated fitting

fitting produced from pipe conforming to EN 13244-2 and/or from injection moulded fittings conforming to this standard

3.6

voltage regulation

control of energy supplied, during the fusion process of an electrofusion fitting, by means of the voltage parameter

3.7

intensity regulation

control of energy supplied, during the fusion process of an electrofusion fitting, by means of the current parameter

4 Material

4.1 PE compound

The PE compound from which the fittings are made shall conform to EN 13244-1.

EN 13244-3:2002 (E)

4.2 Material for non-polyethylene parts

4.2.1 General

All components shall conform to the relevant European Standard(s). Alternative standards may be utilised in cases where suitable European Standards do not exist provided a fitness for purpose can be demonstrated.

The materials and constituent elements used in making the fitting (including elastomers, greases, and any metal parts) shall be as resistant to the external and internal environments as the other elements of the piping system and shall have a life expectancy under the following conditions at least equal to that of the PE pipe conforming to EN 13244-2 with which they are intended to be used:

- a) during storage;
- b) under the effect of the fluids being conveyed;
- c) taking account of the service environment and operating conditions.

The requirements for the level of material performance for non-polyethylene parts shall be at least as stringent as that of the PE compound for the piping system.

Fittings material in contact with the PE pipe shall not adversely affect the pipe performance or initiate stress cracking.

4.2.2 Metal parts

All parts susceptible to corrosion shall be adequately protected.

When dissimilar metallic materials are used which may be in contact with moisture, steps shall be taken to avoid galvanic corrosion.

4.2.3 Elastomers

Elastomeric materials used for the manufacture of seals shall conform to EN 681-1 or EN 681-2, as applicable.

4.2.4 Other materials

Greases or lubricants shall not exude on to the fusion areas, and shall not affect the long-term performance of the fitting.

5 General characteristics

5.1 Appearance

When viewed without magnification, the internal and external surfaces of the fitting shall be smooth, clean and free from scoring, cavities and other surface defects to an extent that would prevent conformity of the fitting to this standard.

5.2 Design

The design of the fitting shall be such that, when assembling the fitting onto the pipe or other components, the electrical coils and/or seals are not displaced.

5.3 Colour

Unless other colours are specified by national regulations the colour of the PE fittings shall be black.

NOTE 1 Where national regulations require an alternative colour to black, pipes coloured blue or black with blue stripes should not be used for this application. The blue colour indicates that the components are suitable for the conveyance of water intended for human consumption as specified in EN 12201.

NOTE 2 For above ground installations, fittings manufactured in colours other than black compound conforming to EN 13244-1 should be protected from direct UV light.

5.4 Electrical characteristics for electrofusion fittings

The electrical protection that shall be provided by the system depends on the voltage and the current strength used and on the characteristics of the electricity power.

For voltages greater than 25 V, direct human contact with the energised parts shall not be possible when the fitting is in the fusion cycle during assembly in accordance with the instructions of the manufacturer of the fittings and the assembly equipment, as applicable.

NOTE 1 During the fusion process, this type of fitting is a part of an electrical system as defined in EN 60335-1^[1], IEC 60364-1^[2] and IEC 60449^[3]. A protection against direct contacts with active parts (live conductors) is required in conformity to EN 60529^[4]. This protection is a function of the work site conditions.

NOTE 2 See annex B for examples of typical electrofusion terminal connectors.

The surface finish of the terminal pins shall allow a minimum contact resistance in order to satisfy the resistance tolerance requirements (nominal value $\pm 10\%$).

5.5 Appearance of factory made joints

The internal and external surfaces of the pipe and fitting after fusion jointing, examined visually without magnification, shall be free from melt exudation outside the confines of the fitting, apart from that which may be declared acceptable by the fitting manufacturer or used as a fusion marker.

Any melt exudation shall not cause wire movement in electrofusion fittings such that it leads to short circuiting, when jointed in accordance with the manufacturer's instructions. There shall be no excessive creasing of the internal surfaces of the adjoining pipes.

6 Geometrical characteristics

6.1 Measurement of dimensions

The dimensions of the fittings shall be measured in accordance with prEN ISO 3126. In the case of dispute the measurement of dimensions shall be made not less than 24 h after manufacture after being conditioned for at least 4 h at (23 ± 2) °C.

6.2 Dimensions of electrofusion sockets

6.2.1 Diameters and lengths of electrofusion sockets

When measured in accordance with 6.1 the diameters and lengths of electrofusion sockets (see Figure 1) shall conform to Table 1.

Table 1 — Electrofusion socket dimensions

Dimensions in millimetres

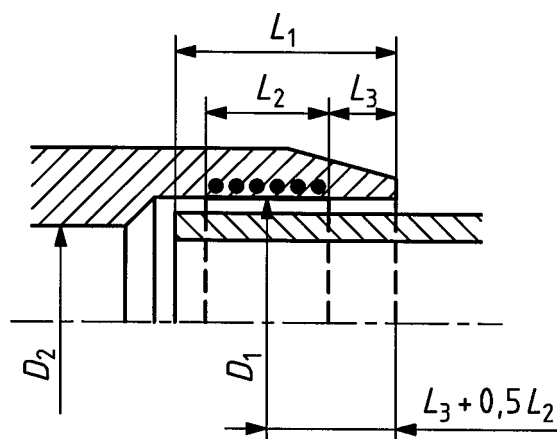
Nominal diameter of the fitting d_n	Design depth			Fusion zone ^a $L_{2,min}$
	$L_{1,min}$		$L_{1,max}$	
	Intensity regulation	Voltage regulation		
20	20	25	41	10
25	20	25	41	10
32	20	25	44	10
40	20	25	49	10
50	20	28	55	10
63	23	31	63	11
75	25	35	70	12
90	28	40	79	13
110	32	53	82	15
125	35	58	87	16
140	38	62	92	18
160	42	68	98	20
180	46	74	105	21
200	50	80	112	23
225	55	88	120	26
250	73	95	129	33
280	81	104	139	35
315	89	115	150	39
355	99	127	164	42
400	110	140	179	47
450	122	155	195	51
500	135	170	212	56
560	147	188	235	61
630	161	209	255	67

^a Increased fusion zone lengths are applicable for fittings rated to higher pressures, in order to meet the performance requirements of this standard.

The mean inside diameter of the fitting in the middle of the fusion zone, D_1 , shall not be less than d_n .

The manufacturer shall declare the actual maximum and minimum values of D_1 and L_1 to determine suitability for clamping and joint assembly.

In the case of a fitting having sockets of differing sizes, each one shall conform to the requirements for the corresponding nominal diameter.

**Key**

D_1 is the "mean inside diameter in the fusion zone" measured in a plane parallel to the plane of the mouth at a distance of $L_3 + 0,5L_2$;

D_2 is the bore which is the minimum diameter of the flow channel through the body of the fitting where $D_2 \geq (d_n - 2e_{\min})$;

L_1 is the "design penetration depth" of the pipe or of the male end of a spigot fitting. In the case of a coupling without a stop, it is not greater than half the total length of the fitting;

L_2 is the heated length within a socket as declared by the manufacturer to be the nominal length of the fusion zone;

L_3 is the distance between the mouth of the fitting and the start of the fusion zone as declared by the manufacturer to be the nominal unheated entrance length of the fitting L_3 shall be ≥ 5 mm.

Figure 1 — Dimensions of electrofusion sockets

6.2.2 Wall thicknesses

The wall thickness of the body of the fitting at any point, E , shall be equal to or greater than e_{\min} for the corresponding pipe for any part of the fitting located at a distance beyond $2L_1/3$ from all entrance faces of the fitting when the fitting and the corresponding pipe are made from a polyethylene with the same designation. If the fitting is produced from a polyethylene with an MRS designation different from that of the corresponding pipe, the preferred relationship between the wall thickness of the fitting, E , and the pipe, e_{\min} , shall conform to Table 2.

Table 2 — Relationship between pipe and fitting wall thicknesses

Material		Relationship between fitting wall thickness, E , and pipe wall thickness, e_{\min}
Pipe	Fitting	
PE 80	PE 100	$E \geq 0,8e_{\min}$
PE 100	PE 80	$E \geq 1,25e_{\min}$

In order to prevent stress concentrations, any changes in wall thickness of the fitting body shall be gradual.

NOTE Fittings conforming to ISO 8085-3 are deemed to satisfy the requirements of this standard.

6.3 Dimensions of spigotted fittings

When measured in accordance with 6.1, the spigot dimensions shall conform Table 3 (see Figure 2).

Table 3 — Spigot dimensions

Dimensions in millimetres

Nominal outside diameter of spigot	Mean outside diameter of the fusion end ^a			For electrofusion				Socket fusion	For butt fusion			
	$D_{1,min}$	Grade A $D_{1,max}$	Grade B $D_{1,max}$	Out-of- round- ness max.	Min. bore D_2	Cut back length $L_{1,min}$	Tubular length ^b $L_{2,min}$	Tubular length $L_{2,min}$	Out-of- round- ness max.	Cut back length $L_{1,min}$	Tubular length Normal ^c $L_{2,min}$	Tubular length Special ^d $L_{2,min}$
32	32,0	—	32,3	0,5	25	25	44	14,6	—	—	—	—
40	40,0	—	40,4	0,6	31	25	49	17	—	—	—	—
50	50,0	—	50,4	0,8	39	25	55	20	—	—	—	—
63	63,0	—	63,4	0,9	49	25	63	24	1,5	5	16	5
75	75,0	—	75,5	1,2	59	25	70	25	1,6	6	19	6
90	90,0	—	90,6	1,4	71	28	79	28	1,8	6	22	6
110	110,0	—	110,6	1,7	87	32	82	32	2,2	8	28	8
125	125,0	—	125,8	1,9	99	35	87	35	2,5	8	32	8
140	140,0	—	140,9	2,1	111	38	92	—	2,8	8	35	8
160	160,0	—	161,0	2,4	127	42	98	—	3,2	8	40	8
180	180,0	—	181,1	2,7	143	46	105	—	3,6	8	45	8
200	200,0	—	201,2	3,0	159	50	112	—	4,0	8	50	8
225	225,0	—	226,4	3,4	179	55	120	—	4,5	10	55	10
250	250,0	—	251,5	3,8	199	60	130	—	5,0	10	60	10
280	280,0	282,6	281,7	4,2	223	75	139	—	9,8	10	70	10
315	315,0	317,9	316,9	4,8	251	75	150	—	11,1	10	80	10
355	355,0	358,2	357,2	5,4	283	75	165	—	12,5	10	90	12
400	400,0	403,3	402,4	6,0	319	75	180	—	14,0	10	95	12
450	450,0	454,1	452,7	6,8	359	100	195	—	15,6	15	60	15
500	500,0	504,5	503,0	7,5	399	100	215	—	17,5	20	60	15
560	560,0	565,0	563,4	8,4	447	100	235	—	19,6	20	60	15
630	630,0	635,0	633,8	9,5	503	100	255	—	22,1	20	60	20

^a Tolerance grades A and B are in accordance with ISO 11922-1^[5].

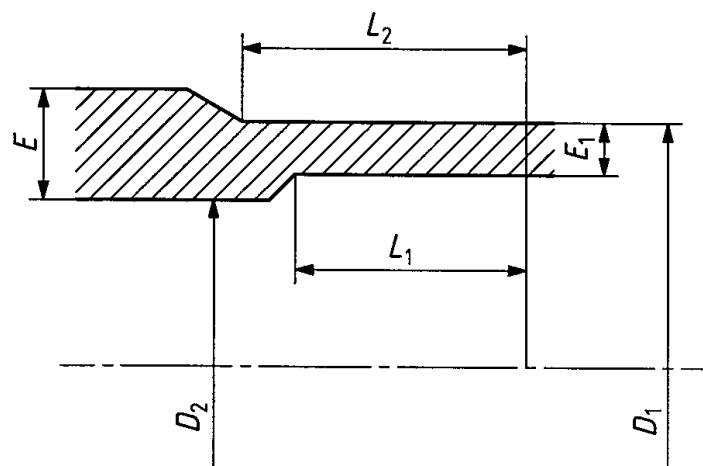
^b The values of L_2 (electrofusion) are based on the following equations:

for $d_n \leq 90$ mm, $L_2 = 0,6d_n + 25$ mm;

for $d_n \geq 110$ mm, $L_2 = d_n/3 + 45$ mm.

^c Used by preference.

^d Used for fittings fabricated in the factory.

**Key**

- D_1 is the "mean outside diameter" of the fusion end piece, measured in any plane parallel to the plane of the entrance face at a distance not greater than L_2 (tubular length) from that plane;
- D_2 is the "minimum bore" which comprises the minimum diameter of the flow channel through the body of the fitting. The measurement of the diameter does not include the fusion pad if any;
- E is the "body wall thickness of the fitting", which comprises the thickness measured at any point of the wall of the fitting;
- E_1 is the "fusion face wall thickness" measured at any point at a maximum distance of L_1 (cut back length) from the entrance face; and shall be equal to the pipe wall thickness and tolerance to which it is intended to be butt fused as specified in Table 2 of EN 13244-2:2002;
- L_1 is the "cut back length" of the fusion end piece, which comprises the initial depth of the spigot end, which is necessary to butt fusion or reweld. This length may be obtained by joining a length of pipe to the spigot end of the fitting provided that the wall thickness of the pipe is equal to E_1 for its whole length;
- L_2 is the "tubular length" of the fusion end piece, which comprises the initial length of the fusion end piece. This tubular length shall allow (in any combination):
- the use of clamps required in the case of butt fusion;
 - the assembly with an electrofusion fitting;
 - the assembly with a socket fusion fitting;
 - the use of mechanical scraper.

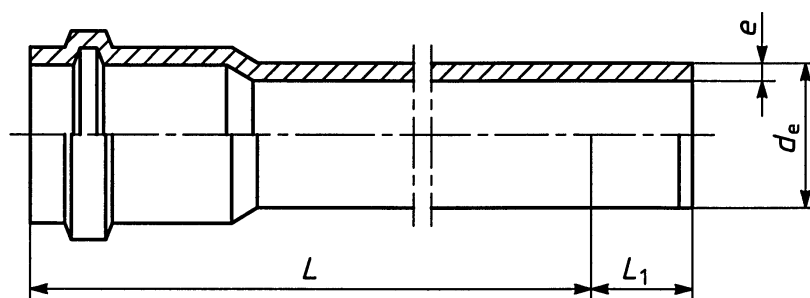
Figure 2 – Dimensions of spigotted fittings

6.4 Dimensions of socket fusion fittings

Where required the description and dimensions of these type of fittings, annex A applies.

EN 13244-3:2002 (E)

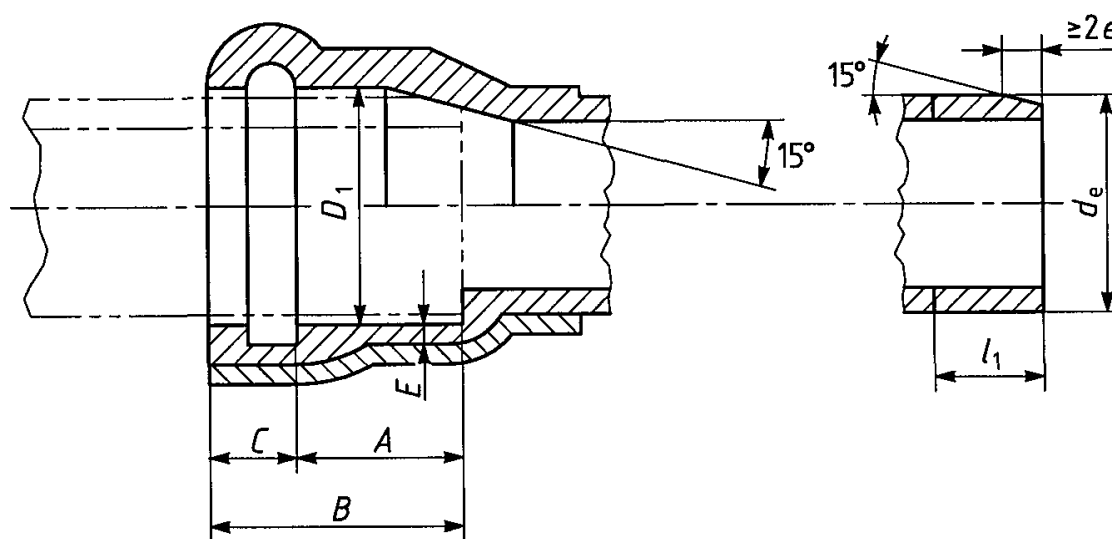
6.5 Socketed pipe



Key

- L_1 is the insertion length of the spigot end
- L is the effective assembly length
- e wall thickness (at any point)
- d_e outside diameter at any point

Figure 3 — Illustration of socketed pipe



Key

- A is the minimum depth of the pipe engagement for sealing function
- B is the overall insertion depth in the socket
- C is the minimum length of the socket mouth
- D_1 is the mean inside diameter of the socket
- E is the minimum wall thickness of the socket
- l_1 is the insertion length of the spigot end
- e is the wall thickness (at any point)

Figure 4 — Socket fitting with rubber sealing ring and spigot end

6.5.1 Dimensions and tolerances of the socket and length of spigot end

When measured in accordance with 6.1 the socket dimensions shall conform to the calculated dimensions according to the equations in 6.5.2.

6.5.2 Equations for calculating the dimensions of sockets of non-end-load-resistant fittings for use with pipes up to 6 m lengths

The following equations for the dimensions of sockets of non-end-bearing loads apply:

$$D_1 \geq (d_n + 0,4) \text{ mm,} \quad \text{where } d_n \leq 32 \text{ mm;}$$

$$D_1 \geq (d_n + 1,009d_n) \text{ mm,} \quad \text{where } d_n \geq 32 \text{ mm;}$$

$$A \geq (0,2d_n + 40) \text{ mm;}$$

$$B = (A + C) \text{ mm,} \quad \text{to be stated in manufacturer's documentation;}$$

$$C \geq (0,15d_n + 5) \text{ mm;}$$

$$E \geq \text{minimum wall thickness, } e_{\min}, \text{ of the pipe, in millimetres;}$$

$$L_1 \geq B \text{ mm (see Figure 4).}$$

6.6 Dimensions of mechanical fittings

Mechanical fittings manufactured substantially from PE and intended for part fusion to PE pipe and part mechanical jointing to other pipe components, e.g. adapters, shall in at least one joint conform to the geometrical characteristics of the PE jointing system to be used.

NOTE Mechanical fittings not manufactured substantially from PE should conform to the requirements specified in the relevant European or International Standard(s).

6.7 Dimensions of loose backing flanges and flange adapters

Dimensions of loose backing flanges and flange adapters shall be in accordance with ISO 9624.

7 Mechanical characteristics

7.1 General

A fitting shall be tested assembled with pipe or as a part of an assembly of more than one fitting fused to pipe conforming to EN 13244-2.

Each assembly shall be prepared from components (pipes and fittings) of the same pressure class and material classification.

7.2 Conditioning

Unless otherwise specified by the applicable test method, the test pieces shall be conditioned at $(23 \pm 2) ^\circ\text{C}$ before testing in accordance with Table 4.

7.3 Requirements

When tested in accordance with the test methods as specified in Table 4 using the parameters given in Table 4, the fitting shall have mechanical characteristics conforming to the requirements given in Table 4.

Table 4 — Mechanical characteristics

Characteristics	Requirements	Test parameters		Test method
		Parameters	Value	
Hydrostatic strength at 20 °C	No failure during test period of any test pieces	End caps Conditioning period Number of test pieces ^b Type of test Test temperature Test period Circumferential (hoop) stress ^c for: PE 63 PE 80 PE 100	Type a) ^a Shall conform to EN 921:1994 3 Water in water 20 °C 100 h 8,0 MPa 10,0 MPa 12,4 MPa	EN 921:1994
Hydrostatic strength at 80 °C	No failure during test period of any test pieces	End caps Conditioning period Number of test pieces ^b Type of test Test temperature Test period Circumferential (hoop) stress ^c for: PE 63 PE 80 PE 100	Type a) ^a Shall conform to EN 921:1994 3 Water-in-water 80 °C 165 h ^d 3,5 MPa 4,5 MPa 5,4 MPa	EN 921:1994
Hydrostatic strength at 80 °C	No failure during test period of any test pieces	End caps Conditioning period Type of test Test temperature Number of test pieces ^b Test period Circumferential (hoop) stress ^c for: PE 63 PE 80 PE 100	Type a) ^a Shall conform to EN 921:1994 Water-in-water 80 °C 3 1 000 h 3,2 MPa 4,0 MPa 5,0 MPa	EN 921:1994

^a Type b) end caps may be used for batch release tests for diameters ≥ 500 mm.

^b The number of test pieces given indicate the quantity required to establish a value for the characteristic described in the Table. The number of test pieces required for factory production control and process control should be listed in the manufacturer's quality plan.(for guidance see prCEN/TS 13244-7^[6])

^c The stress shall be calculated using the dimensions of the pipe used in the test assembly.

^d Premature ductile failures are not taken into account. For retest procedure see 7.4.

7.4 Retest in case of failure at 80 °C

A fracture in a brittle mode in less than 165 h shall constitute a failure, however if a sample in the 165 h test fails in a ductile mode in less than 165 h, a retest shall be performed at a selected lower stress in order to achieve the minimum required time for the selected stress obtained from the line through the stress/time points given in Table 5.

Table 5 — Test parameters for the retest of the hydrostatic strength at 80 °C

PE 63		PE 80		PE 100	
Stress MPa	Test period h	Stress MPa	Test period h	Stress MPa	Test period h
3,5	165	4,5	165	5,4	165
3,4	295				
3,3	538	4,4	233	5,3	256
3,2	1 000	4,3	331	5,2	399
		4,2	474	5,1	629
		4,1	685	5,0	1 000
		4,0	1 000		

7.5 Pressure drop

If required by the purchaser, the manufacturer shall declare the pressure drop of a fitting for sizes ≤ 63 when determined in accordance with ISO 4059.

8 Physical characteristics

8.1 Conditioning

Unless otherwise specified by the applicable test method, the test pieces shall be conditioned at (23 ± 2) °C before testing in accordance with Table 6.

8.2 Requirements

When tested in accordance with the test methods as specified in Table 6 using the indicated parameters, the fittings shall have physical characteristics conforming to the requirements given in Table 6.

EN 13244-3:2002 (E)

Table 6 — Physical characteristics of fittings

Characteristics	Requirements	Test parameters		Test method
		Parameters	Value	
Melt mass-flow rate (MFR) for PE 63, PE 80, and PE 100	Change of MFR by processing less than 20 % ^a	Load Test temperature Test period Number of test pieces ^b	5 kg 190 °C 10 min Shall conform to EN ISO 1133:1999	EN ISO 1133:1999, condition T
Oxidation induction time	≥ 20 min	Test temperature Number of test pieces ^b	200 °C ^c 3	EN 728
Cohesive resistance for electrofusion socket fittings	Length of initiation rupture ≤ $L_2/3$ in brittle failure	Test temperature Number of test pieces ^b	23 °C Shall conform to ISO 13954:1997 or ISO 13955:1997	ISO 13954:1997 or ISO 13955:1997
Tensile strength for butt fusion fittings - spigoted fittings	Test to failure: ductile: pass brittle: fail	Test temperature Number of test pieces ^b	23 °C Shall conform to ISO 13953:2001	ISO 13953:2001

^a Value as measured on the fitting relative to the value measured on the compound used.

^b The number of test pieces given indicate the number required to establish a value for the characteristic described in the table. The number of test pieces required for factory production control and process control should be listed in the manufacturer's quality plan (for guidance see prCEN/TS 13244-7^[6]).

^c Test may be carried out as an indirect test at 210 °C providing that there is clear correlation of the results to those at 200 °C, in cases of dispute the reference temperature shall be 200 °C.

9 Chemical characteristics of fittings in contact with chemicals

If for a particular installation it is necessary to evaluate the chemical resistance of the fittings, then the fitting shall be tested in accordance with ISO 4433-1 and classified in accordance with ISO 4433-2.

NOTE Guidance for the resistance of polyethylene fittings against chemicals is given in ISO/TR 10358^[7].

10 Sealing rings

Sealing rings shall be manufactured from material conforming to EN 681-1 or EN 681-2, as applicable. The sealing ring shall have no detrimental effect on the properties of the fitting and shall not cause the test assembly to fail the functional requirements specified in EN 13244-5.

11 Performance requirements

When fittings conforming to this standard are assembled to each other or to components conforming to other parts of EN 13244, the joints shall conform to the requirements given in EN 13244-5.

12 Marking

12.1 General

12.1.1 All fittings shall be permanently and legibly marked in such a way that the marking does not initiate cracks or other types of failure and that normal storage, weathering, handling, installation and use shall not affect the legibility of the marking.

12.1.2 If printing is used, the colour of the printed information shall differ from the basic colour of the product.

12.1.3 The marking shall be legible without magnification.

NOTE The manufacturer is not responsible for marking that is illegible due to actions during installation and use, such as painting, scratching, covering of components or using detergents, etc. on the components unless agreed by the manufacturer.

12.1.4 There shall be no marking over the minimum spigot length of the fitting.

12.2 Minimum required marking of fittings

The minimum required marking shall conform to Table 7.

NOTE Attention is drawn to the possible need to include CE marking when required for legislative purposes.

Table 7 — Minimum required marking on the fitting

Aspects	Marking or symbol
Manufacturer's name or trade mark	Name or code
Nominal diameter and pipe series/SDR	e.g. d_n 110/S 5 or d_n 110/SDR 11
Material and designation	e.g. PE 80
Manufacturer's information	a
SDR fusion range	e.g. SDR 11 – SDR 26 ^b
<p>^a In clear figures or in code providing traceability to production period within year and month and if the manufacturer is producing at different sites: the production site.</p> <p>^b This information may be printed on a label attached to the fitting or on an individual bag</p>	

12.3 Minimum required marking on a label

The following additional information given in Table 8 may be printed on a label, with one label attached to the fitting or to the individual bag. The label shall be so designed to be intact and legible at the time of installation.

Table 8 — Minimum required marking on the label

Aspects	Marking or symbol
Standard number	EN 13244
Material and designation	e.g. PE 80
Pressure rating in bars	e.g. PN 12,5
Tolerance (only for spigot fittings) $d_n \geq 280$ mm	e.g. Grade A

12.4 Fusion system recognition

Fusion fittings should have a system, either numerical or electromechanical or self regulatory, for recognising the fusion parameters to facilitate the fusion process.

Where bar-codes are used for the numerical recognition, the bar-code label should be able to be stuck to the fitting and should be protected against deterioration.

EN 13244-3:2002 (E)

13 Packaging

The fitting shall be packaged in bulk or individually protected where necessary in order to prevent deterioration and contamination.

The packaging shall have at least one label with the manufacturers name, type and dimensions of the part, number of units and any special storage conditions.

Annex A (normative)

Socket fusion fittings

When applicable the dimensions of socket fusion fittings shall conform to the following tables. The diameter at the root shall not be greater than the diameter at the mouth.

Table A.1 — Socket dimensions for fittings with nominal sizes 16 to 63 inclusive

Dimensions in millimetres

Nom. size DN/OD	Nominal inside diam. of socket	Mean inside diameter of socket				Out-of-roundness max.	Min. bore D_3	Socket reference length L_{min}	Heated socket length ^a		Penetration of pipe into socket ^a	
		Mouth		Root					$L_{2,min}$	$L_{2,max}$	$L_{3,min}$	$L_{3,max}$
		$D_{1,min}$	$D_{1,max}$	$D_{2,min}$	$D_{2,max}$							
32	32	31,1	31,5	30,9	31,3	0,5	25	18,1	15,6	18,1	14,6	17,1
40	40	39,0	39,4	38,8	39,2	0,5	31	20,5	18,0	20,5	17,0	19,5
50	50	48,9	49,4	48,7	49,2	0,6	39	23,5	21,0	23,5	20,0	22,5
63	63	62,0 ^b	62,4 ^b	61,6	62,1	0,6	49	27,4	24,9	27,4	23,9	26,4

^a The values for L_2 and L_3 are calculated from the following equations: $L_{2,max} = L_{min}$; $L_{2,min} = (L_{min} - 2,5)$;

$L_{3,max} = (L_{min} - 1)$ and $L_{3,min} = (L_{min} - 3,5)$.

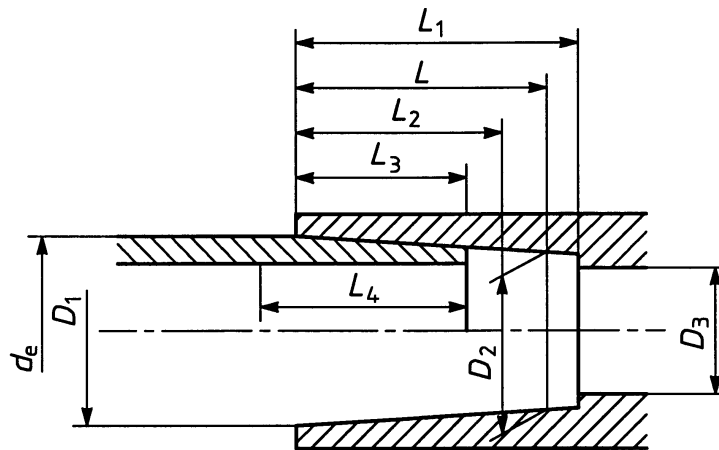
^b Where rerounding clamps are used, the maximum diameter of 62,4 mm may be increased by 0,1 mm to 62,5 mm. Conversely, where a peeling technique is used, the minimum diameter of 62,0 mm may be reduced by 0,1 mm to 61,9 mm.

Table A.2 — Socket dimensions for fittings with nominal sizes 75 to 125 inclusive

Dimensions in millimetres

Nom. size DN/OD	Mean outside diameter of pipe		Nom. inside diam. of socket d_n	Mean inside diameter of socket				Out-of-roundness	Min. bore D_3	Socket ref. length L_{min}	Heated socket length ^a		Penetration of pipe into socket ^a	
	$d_{em,min}$	$d_{em,max}$		Mouth		Root					$L_{2,min}$	$L_{2,max}$	$L_{3,min}$	$L_{3,max}$
				$D_{1,min}$	$D_{1,max}$	$D_{2,min}$	$D_{2,max}$							
75	75,0	75,5	75	74,3	74,8	73,0	73,5	0,7	59	30	26	30	25	29
90	90,0	90,6	90	89,3	89,9	87,9	88,5	1,0	71	33	29	33	28	32
110	110,0	110,6	110	109,4	110,0	107,7	108,3	1,0	87	37	33	37	32	36
125	125,0	125,6	125	124,4	125,0	122,6	123,2	1,0	99	40	36	40	35	39

^a The values for L_2 and L_3 are calculated from the following equations: $L_{2,min} = (L_{min} - 4)$; $L_{2,max} = L_{min}$; $L_{3,min} = (L_{min} - 5)$ and $L_{3,max} = (L_{min} - 1)$.

**Key**

- D_1 is the "mean inside mouth diameter" of the socket, i.e. the mean diameter of the circle at the intersection of the extension of the socket with the plane of the socket mouth;
- D_2 is the "mean inside root diameter" of the socket, i.e. the mean diameter of the circle in a plane parallel to the plane of the mouth and separated from it by a distance of L , which is the reference length of the socket;
- D_3 is the "minimum bore", i.e. the minimum diameter of the flow channel through the body of the fitting;
- L is the "reference socket length" i.e. the theoretical minimum socket length used for the purpose of calculation;
- L_1 is the "actual length of the socket" from mouth to shoulder, if any;
- L_2 is the "heated length of the fitting" i.e. the length of penetration of the heated tool into the socket;
- L_3 is the "insertion depth" i.e. the depth of the heated pipe end into the socket;
- L_4 is the "heated length of pipe" i.e. the depth of penetration of the pipe end into the heated tool.

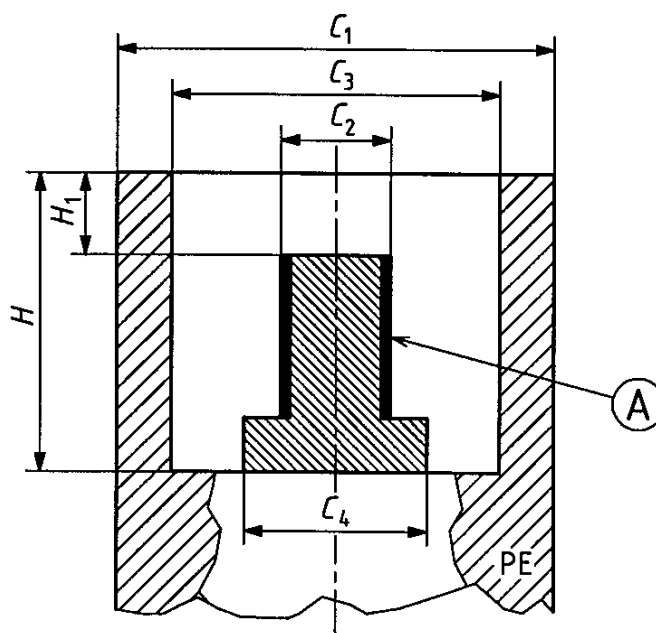
Figure A.1 — Socket and pipe - Symbols for dimensions

Annex B (informative)

Examples of typical terminal connection for electrofusion fittings

Figures B.1 and B.2 illustrate examples of terminal connections suitable for use with voltages less than or equal to 48 volts (types A and B).

Dimensions in millimetres

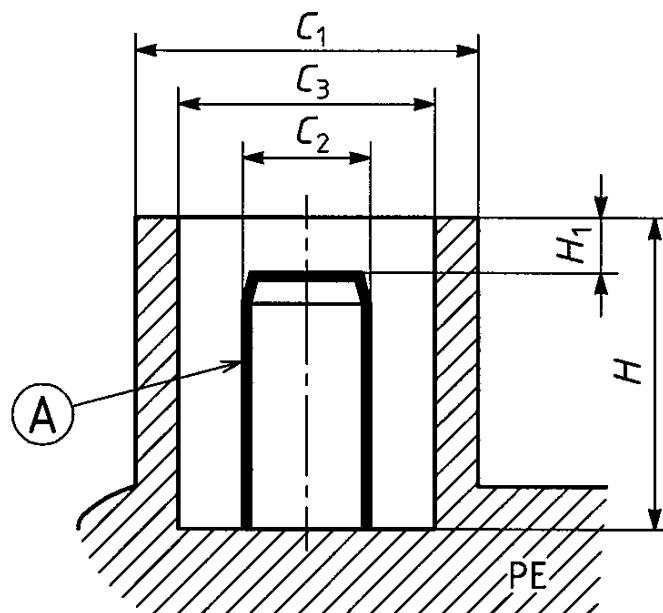


Key

- A is active zone
- C_1 outside diameter of the terminal shroud $C_1 \geq 11,8$
- C_2 diameter of the active part of the terminal $C_2 = 4,0 \pm 0,03$
- C_3 internal diameter of the terminal shroud $C_3 = 9,5 \pm 1,0$
- C_4 maximum overall diameter of the base $C_4 \leq 6,0$
- H internal depth of the terminal shroud $H \geq 12,0$
- H_1 distance between the upper part of the terminal and the active part $H_1 = 3,2 \pm 0,5$

Figure B.1 — Typical type A connection

Dimensions in millimetres

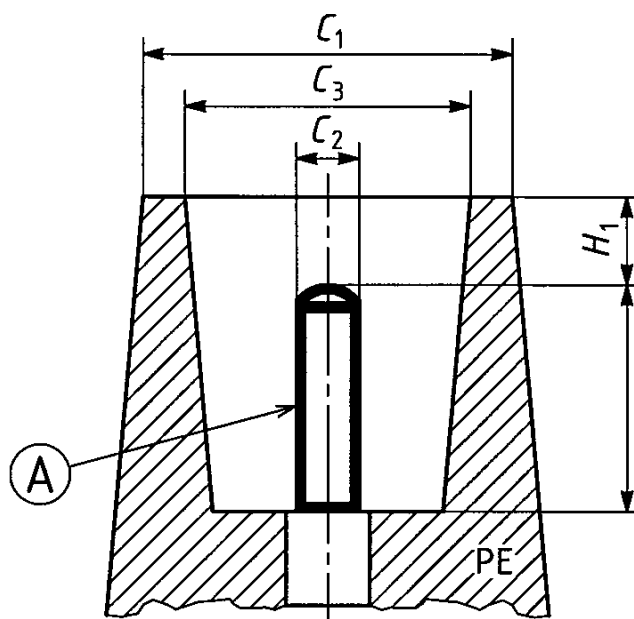
**Key**

A is active zone

 C_1 outside diameter of the terminal shroud $C_1 = 13,0 \pm 0,5$ C_2 diameter of the active part of the terminal $C_2 = 4,7 \pm 0,03$ C_3 internal diameter of the terminal shroud $C_3 = 10,0 \pm 0,50$ H internal depth of the terminal shroud $H \geq 15,5$ H_1 distance between the upper part of the terminal and the active part $H_1 = 4,5 \pm 0,5$ **Figure B.2 — Typical type B connection**

Figure B.3 illustrates an example of a typical electrofusion terminal connection suitable for use with voltages up to 250 V (type C).

Dimensions in millimetres

**Key**

A is active zone

 C_1 outside diameter of the terminal $C_1 \geq C_3 + 2,0$ C_2 diameter of the active part of the terminal $C_2 \geq 2,0$ C_3 internal diameter of the terminal shroud $C_3 \geq C_2 + 4,0$ H_1 distance between the upper part of terminal shroud and the active part defined in EN 60947-1⁽⁸⁾ Sufficient to ensure a degree of protection of IP2X as H_2 depth of the active part of the shroud $H_2 \geq 7,0$ **Figure B.3 — Typical type C connection**

Bibliography

- [1] EN 60335-1, *Safety of household and similar electrical appliances — Part 1: General requirements (IEC 60335-1:1983, modified)*.
- [2] IEC 60364-1, *Electrical installations of buildings — Part 1: Fundamental principles, assessment of general characteristics, definitions*.
- [3] IEC 60449, *Voltage bands for electrical installations of buildings*.
- [4] EN 60529, *Degrees of protection provided by enclosures (IP Code) (IEC 60529:1989)*.
- [5] ISO 11922-1, *Thermoplastics pipes for the conveyance of fluids — Dimensions and tolerances — Part 1: Metric series*.
- [6] prCEN/TS 13244-7, *Plastics piping systems for buried and above-ground pressure systems for water for general purposes, drainage and sewerage — Polyethylene (PE) — Part 7: Guidance for the assessment of conformity*.
- [7] ISO/TR 10358, *Plastics pipes and fittings — Combined chemical-resistance classification table*.
- [8] EN 60947-1, *Low-voltage switchgear and control gear — Part 1: General rules (IEC 60947-1:1999, modified)*.

National annex NA (informative)

Additional information on the selection and installation of piping systems and components in the UK

The responsible UK committee gives the following advice concerning the selection and installation of piping systems and components conforming to this British Standard.

a) Water and water and sewerage undertakings and other entities deemed to be within the scope of the Public Procurement Directive (PPD) are obliged to use EN 13244-1, EN 13244-2, EN 13244-3, EN 13244-4 and EN 13244-5 produced under EC/U mandate, if they wish to purchase PE pipe systems or components within its scope.

b) Where there are options, care should be taken to ensure that agreement is established between suppliers and purchasers, e.g. in terms of colour, size, physical characteristics, effect on water quality and quality assurance.

c) Increased fusion zone lengths are applicable for fittings rated to higher pressures, see Footnote a to Table 1. For applications within the UK water industry suitable minimum fusion lengths are specified in WIS 4-32-14 [1].

d) The use of pipes and components manufactured in PE 63 materials is not established practice in the UK.

e) It has been UK practice to specify a test to guard against leakage or contamination as a result of biodegradation of elastomeric sealing rings or gaskets used in piping systems. This requirement is specifically excluded from the scope of BS EN 681-1. For manufacturers wishing to demonstrate resistance of such products to biodegradation, a test is contained in BS 7874.

f) The minimum lengths of spigots specified in Table 3 do not allow for the use of mechanical scrapers. Spigot lengths which do allow for this are specified in WIS 4-32-15 [2].

g) With reference to 4.2.1, in those cases where there is no relevant European Standard, an appropriate specification for use in the UK for component parts made from thermoplastic materials other than PE is provided in WIS 4-32-11 (Issue 2) [3].

h) The electrical characteristics for electrofusion fittings are loosely specified in 5.4. It is current UK practice to specify 4.7 mm diameter electrofusion terminal pins in association with an applied voltage of 39 V to 40 V and with a maximum power requirement for the 40 V fittings of 2.5 kW (this aligns with WIS 4-32-14 [1]).

National Bibliography

Standards publications

BS 7874:1998, *Method of test for microbiological deterioration of elastomeric seals for joints in pipework and pipelines*.

BS EN 681-1:1996, *Elastomeric seals — Material requirements for pipe joint seals used in water and drainage applications — Part 1: Vulcanized rubber*.

BS EN ISO 13479:1997, *Polyolefin pipes for the conveyance of fluids — Determination of resistance to crack propagation — Test method for slow crack growth on notched pipes (notch test)*.

Other publications

[1] WRc. WIS 4-32-14, *Specification for PE 80 and PE 100 electrofusion fittings for nominal sizes up to and including 630*. Swindon: WRc, 1995.

[2] WRc. WIS 4-32-15, *Specification for PE 80 and PE 100 spigot fittings and drawn bends for nominal sizes up to and including 1 000*. Swindon: WRc, 1995.

[3] WRc. WIS 4-32-11 (Issue 2), *Specification for thermoplastic end-load resistant mechanical joints for polyethylene pipes of nominal size ≤63*. Swindon: WRc, 1999.

BSI — British Standards Institution

BSI is the independent national body responsible for preparing British Standards. It presents the UK view on standards in Europe and at the international level. It is incorporated by Royal Charter.

Revisions

British Standards are updated by amendment or revision. Users of British Standards should make sure that they possess the latest amendments or editions.

It is the constant aim of BSI to improve the quality of our products and services. We would be grateful if anyone finding an inaccuracy or ambiguity while using this British Standard would inform the Secretary of the technical committee responsible, the identity of which can be found on the inside front cover.
Tel: +44 (0)20 8996 9000. Fax: +44 (0)20 8996 7400.

BSI offers members an individual updating service called PLUS which ensures that subscribers automatically receive the latest editions of standards.

Buying standards

Orders for all BSI, international and foreign standards publications should be addressed to Customer Services. Tel: +44 (0)20 8996 9001.
Fax: +44 (0)20 8996 7001. Email: orders@bsi-global.com. Standards are also available from the BSI website at <http://www.bsi-global.com>.

In response to orders for international standards, it is BSI policy to supply the BSI implementation of those that have been published as British Standards, unless otherwise requested.

Information on standards

BSI provides a wide range of information on national, European and international standards through its Library and its Technical Help to Exporters Service. Various BSI electronic information services are also available which give details on all its products and services. Contact the Information Centre.
Tel: +44 (0)20 8996 7111. Fax: +44 (0)20 8996 7048. Email: info@bsi-global.com.

Subscribing members of BSI are kept up to date with standards developments and receive substantial discounts on the purchase price of standards. For details of these and other benefits contact Membership Administration.
Tel: +44 (0)20 8996 7002. Fax: +44 (0)20 8996 7001.
Email: membership@bsi-global.com.

Information regarding online access to British Standards via British Standards Online can be found at <http://www.bsi-global.com/bsonline>.

Further information about BSI is available on the BSI website at <http://www.bsi-global.com>.

Copyright

Copyright subsists in all BSI publications. BSI also holds the copyright, in the UK, of the publications of the international standardization bodies. Except as permitted under the Copyright, Designs and Patents Act 1988 no extract may be reproduced, stored in a retrieval system or transmitted in any form or by any means – electronic, photocopying, recording or otherwise – without prior written permission from BSI.

This does not preclude the free use, in the course of implementing the standard, of necessary details such as symbols, and size, type or grade designations. If these details are to be used for any other purpose than implementation then the prior written permission of BSI must be obtained.

Details and advice can be obtained from the Copyright & Licensing Manager.
Tel: +44 (0)20 8996 7070. Fax: +44 (0)20 8996 7553.
Email: copyright@bsi-global.com.