

BS EN 1766:2017



BSI Standards Publication

**Products and systems for
the protection and repair
of concrete structures —
Test methods — Reference
concretes for testing**

National foreword

This British Standard is the UK implementation of EN 1766:2017. It supersedes BS EN 1766:2000 which is withdrawn.

The UK participation in its preparation was entrusted to Technical Committee B/517/8, Protection and repair of concrete structures.

A list of organizations represented on this committee can be obtained on request to its secretary.

This publication does not purport to include all the necessary provisions of a contract. Users are responsible for its correct application.

© The British Standards Institution 2017.
Published by BSI Standards Limited 2017

ISBN 978 0 580 90284 0

ICS 91.080.40; 91.100.30

Compliance with a British Standard cannot confer immunity from legal obligations.

This British Standard was published under the authority of the Standards Policy and Strategy Committee on 28 February 2017.

Amendments/corrigenda issued since publication

Date	Text affected
------	---------------

EUROPEAN STANDARD

EN 1766

NORME EUROPÉENNE

EUROPÄISCHE NORM

February 2017

ICS 91.080.40

Supersedes EN 1766:2000

English Version

Products and systems for the protection and repair of concrete structures - Test methods - Reference concretes for testing

Produits et systèmes pour la protection et la réparation
des structures en béton - Méthodes d'essais - Bétons de
référence pour essais

Produkte und Systeme für den Schutz und die
Instandsetzung von Betontragwerken - Prüfverfahren -
Referenzbetone für Prüfungen

This European Standard was approved by CEN on 4 December 2016.

CEN members are bound to comply with the CEN/CENELEC Internal Regulations which stipulate the conditions for giving this European Standard the status of a national standard without any alteration. Up-to-date lists and bibliographical references concerning such national standards may be obtained on application to the CEN-CENELEC Management Centre or to any CEN member.

This European Standard exists in three official versions (English, French, German). A version in any other language made by translation under the responsibility of a CEN member into its own language and notified to the CEN-CENELEC Management Centre has the same status as the official versions.

CEN members are the national standards bodies of Austria, Belgium, Bulgaria, Croatia, Cyprus, Czech Republic, Denmark, Estonia, Finland, Former Yugoslav Republic of Macedonia, France, Germany, Greece, Hungary, Iceland, Ireland, Italy, Latvia, Lithuania, Luxembourg, Malta, Netherlands, Norway, Poland, Portugal, Romania, Serbia, Slovakia, Slovenia, Spain, Sweden, Switzerland, Turkey and United Kingdom.



EUROPEAN COMMITTEE FOR STANDARDIZATION
COMITÉ EUROPÉEN DE NORMALISATION
EUROPÄISCHES KOMITEE FÜR NORMUNG

CEN-CENELEC Management Centre: Avenue Marnix 17, B-1000 Brussels

Contents		Page
European foreword		3
1	Scope	4
2	Normative references	4
3	Principle	4
4	Equipment	4
4.1	Concrete mixer (forced action pan mixer).....	4
4.2	Moulds.....	4
4.3	High frequency vibrating table	4
4.4	Grit blasting equipment.....	5
4.5	Surface roughness measuring equipment	5
5	Materials	5
5.1	Aggregates	5
5.2	Mixing water	6
5.3	Cement	6
5.4	Admixtures	6
5.5	Grit for surface preparation by blasting.....	6
5.6	Silica sand for measuring roughness	6
6	Reference concrete mixes	6
6.1	General.....	6
6.2	Reference concrete with 16 mm or 20 mm aggregate.....	6
6.2.1	Compositions and properties (see Table 1)	6
6.3	Reference concrete with 8 mm or 10 mm aggregate.....	7
6.3.1	Compositions and properties (see Table 1)	7
6.4	Specimen preparation.....	10
6.5	Concrete curing and storage	10
7	Surface preparation and roughness index determination	10
7.1	Surface preparation	10
7.2	Measurement of the Roughness index.....	10
8	Report	12
Annex A (informative) Grading curves		13

European foreword

This document (EN 1766:2017) has been prepared by Technical Committee CEN/TC 104 "Concrete and related products", the secretariat of which is held by DIN.

This European Standard shall be given the status of a national standard, either by publication of an identical text or by endorsement, at the latest by August 2017, and conflicting national standards shall be withdrawn at the latest by November 2018.

Attention is drawn to the possibility that some of the elements of this document may be the subject of patent rights. CEN shall not be held responsible for identifying any or all such patent rights.

This document supersedes EN 1766:2000.

The main technical changes that have been made in this new edition are as follows:

- a) Definition of 3 new reference MC concretes;
- b) Definition of thresholds for the tensile bond strength for reference concretes C(0,40); C(0,45); C(0,70) and new MC concretes.

According to the CEN-CENELEC Internal Regulations, the national standards organisations of the following countries are bound to implement this European Standard: Austria, Belgium, Bulgaria, Croatia, Cyprus, Czech Republic, Denmark, Estonia, Finland, Former Yugoslav Republic of Macedonia, France, Germany, Greece, Hungary, Iceland, Ireland, Italy, Latvia, Lithuania, Luxembourg, Malta, Netherlands, Norway, Poland, Portugal, Serbia, Romania, Slovakia, Slovenia, Spain, Sweden, Switzerland, Turkey and the United Kingdom.

1 Scope

This European Standard specifies the composition, characteristics and preparation procedure for reference concrete substrates, which are to be used in the test methods to measure performances of products and systems for the repair and protection of concrete structures.

The provisions of this Standard are applicable to concrete with a maximum aggregate size of 16 mm or 20 mm or with a maximum aggregate size of 8 mm or 10 mm.

2 Normative references

The following documents, in whole or in part, are normatively referenced in this document and are indispensable for its application. For dated references, only the edition cited applies. For undated references, the latest edition of the referenced document (including any amendments) applies.

EN 197-1, *Cement - Part 1: Composition, specifications and conformity criteria for common cements*

EN 206, *Concrete — Specification, performance, production and conformity*

EN 933-2, *Tests for geometrical properties of aggregates - Part 2: Determination of particle size distribution - Test sieves, nominal size of apertures*

EN 934-2, *Admixtures for concrete, mortar and grout — Part 2: Concrete admixtures — Definitions, requirements, conformity, marking and labelling*

EN 1008, *Mixing water for concrete - Specification for sampling, testing and assessing the suitability of water, including water recovered from processes in the concrete industry, as mixing water for concrete*

EN 1542, *Products and systems for the protection and repair of concrete structures - Test methods - Measurement of bond strength by pull-off*

EN 12390-3, *Testing hardened concrete - Part 3: Compressive strength of test specimens*

EN 12620, *Aggregates for concrete*

3 Principle

Reference concrete test specimens with reproducible surface texture and appropriate strength are cast to enable the resistance against physical or chemical exposure of repair materials to be evaluated.

The required surface roughness is obtained by grit blasting the surface of the hardened concrete.

4 Equipment

4.1 Concrete mixer (forced action pan mixer)

4.2 Moulds

Moulds for producing concrete specimens, of non-absorbent, rigid material, not attacked by cement paste, of a size 300 mm × 300 mm × 100 mm or other sizes specified in individual test method standards, corresponding to the property to be tested, shall be used.

4.3 High frequency vibrating table

Or vibration rod suitable for compaction of the concrete in the moulds.

4.4 Grit blasting equipment

It shall comply with the following:

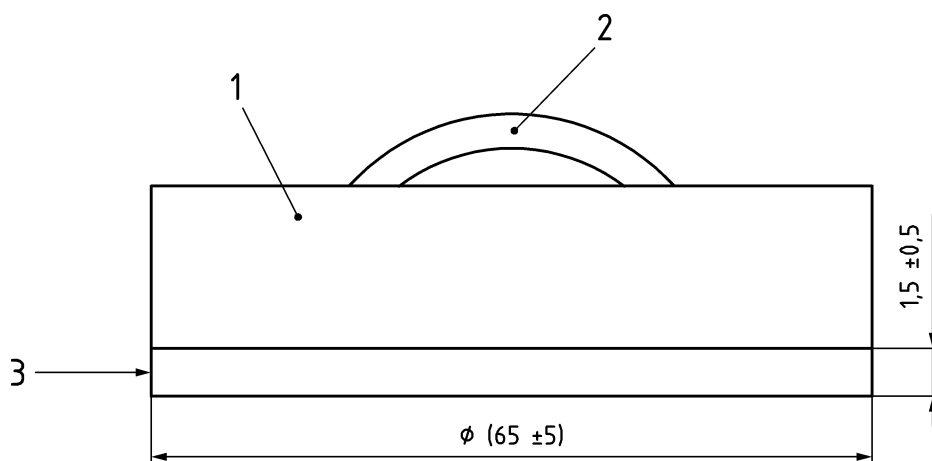
- a) air pressure approximately 0,5 MPa;
- b) nozzle diameter 8 mm to 12 mm;
- c) the spread angle of the nozzle shall be sufficient to prevent the jet from cutting deeply into the concrete surface. This shall be demonstrated by preliminary test.

NOTE As alternative, high pressure water-blasting equipment, capable of operating with or without the addition of grit, can be used subject to preliminary tests to confirm that the required surface texture can be achieved.

4.5 Surface roughness measuring equipment

- a) Measuring cylinder, of (25 ± 1) ml total capacity and 20 mm maximum internal diameter;
- b) disc, comprising a flat wooden disc (65 ± 5) mm in diameter with a hard rubber disc of the same diameter $(1,5 \pm 0,5)$ mm thick stuck to one face, the reverse face being provided with a handle (see Figure 1).

Dimensions in millimetre



Key

- 1 wooden disk
- 2 handle
- 3 rubber disk

Figure 1 — Disk for surface roughness measurement

5 Materials

5.1 Aggregates

Aggregates according to EN 12620 shall be natural and silica-based with low water absorption (less than 2 % by mass). The aggregate grading, measured according to EN 933-2, shall conform to the maximum sizes listed in clause 6.2 and 6.3 and have an appropriate size distribution in order to obtain

the mechanical properties specified for each type, i.e. tensile strength, tensile bond strength and compressive strength. Typical aggregate gradings for this purpose are exemplary, given in Annex A.

5.2 Mixing water

Water according to EN 1008 shall be used.

5.3 Cement

Portland type CEM I 42,5 R according to EN 197-1 shall be used.

5.4 Admixtures

Admixtures according to EN 934-2 shall be used.

5.5 Grit for surface preparation by blasting

Commercial grit for grit-blasting of concrete shall be used, with grain size within the range of 0,25 mm to 1,0 mm. The grit shall not contain ferrous components such as chilled cast iron slag, which are prone to rusting.

5.6 Silica sand for measuring roughness

Silica sand with a grain size of 0,05 mm to 0,1 mm, dried to a constant weight, shall be used.

6 Reference concrete mixes

6.1 General

This standard specifies eight types of reference concrete, defined by the maximum size of the aggregate and mix proportions. The reference concrete is chosen according to the type of product or system for the protection and repair of concrete structures and to the related test methods standards.

NOTE 1 The water taken into account hereafter in the water/cement ratio is the added water plus the water already contained in the admixtures and the additions.

Workability should be appropriate to achieve adequate placing of concrete with freedom from bleeding or segregation. Any special requirements for surface finish of placed specimens for particular test methods using reference concrete samples will be stated in those test methods.

Admixtures conforming to EN 934-2 are permitted to give a workable concrete mix to meet the requirements of Table 1 or to confer adequate freeze–thaw resistance by entrainment of air.

NOTE 2 The application of a suitable plasticizer or super plasticizer conforming to EN 934-2 is likely to be required to achieve optimum compaction, as described in 6.4.

6.2 Reference concrete with 16 mm or 20 mm aggregate

6.2.1 Compositions and properties (see Table 1)

6.2.1.1 Type C (0,40)

The mix shall contain 410/425 kg/m³ cement and have a water/cement ratio of 0,40. Mixes shall have a 28 day mean compressive strength measured according to EN 12390-3 of (60 ± 5) N/mm² for cubes and (50 ± 5) N/mm² for cylinders, a median tensile bond strength by pull off according to EN 1542 greater than 3 N/mm².

6.2.1.2 Type C (0,45)

The mix shall contain 360/375 kg/m³ cement and have a water/cement ratio of 0,45. Mixes shall have a 28 day mean compressive strength measured according to EN 12390-3 of (50 ± 5) N/mm² for cubes and (40 ± 5) N/mm² for cylinders and, when applicable, a median tensile bond strength by pull off according to EN 1542 greater than 2,5 N/mm².

6.2.1.3 Type C (0,70)

The mix shall contain 260/275 kg/m³ cement and a water/cement ratio of 0,70 ± 0,05. Mixes shall have a 28 day mean compressive strength measured according to EN 12390-3 of (30 ± 5) N/mm² for cubes and (25 ± 5) N/mm² for cylinders and, when applicable, a mean bond strength by pull off according to EN 1542 greater than 1,5 N/mm².

6.3 Reference concrete with 8 mm or 10 mm aggregate

6.3.1 Compositions and properties (see Table 1)

6.3.1.1 Type MC (0,40)

The mix shall contain 455/470 kg/m³ cement and have a water/cement ratio of 0,40.

After 28 days the reference concrete shall have an average tensile bond strength determined by pull off according to EN 1542 with a minimum value of 3,0 N/mm², but not for any individual result. The pull off test shall be carried out on the prepared concrete surface immediately before applying the material to be tested, using at least one substrate specimen from each batch of concrete. At least one in every 15 specimens shall be tested.

NOTE The requirements are usually met by a concrete with a compressive strength which satisfies class C50/60, as specified in EN 206.

6.3.1.2 Type MC (0,45)

The mix shall contain 395/410 kg/m³ cement and have a water/cement ratio of 0,45.

After 28 days the reference concrete shall have a median tensile bond strength determined by pull off, according to EN 1542 greater than 2,5 N/mm², but not for any individual result. The pull off test shall be carried out on the prepared concrete surface immediately before applying the material to be tested, using at least one substrate specimen from each batch of concrete. At least one in every 15 specimens shall be tested.

NOTE The requirements are usually met by a concrete with a compressive strength which satisfies class C 40/50, as specified in EN 206.

6.3.1.3 Type MC (0,70)

The mix shall contain 290/305 kg/m³ cement and a water/cement ratio of 0,70 ± 0,05. Mixes shall have a 28 day mean compressive strength measured according to EN 12390-3 of (30 ± 5) N/mm² for cubes and (25 ± 5) N/mm² for cylinders and, when applicable, a median tensile bond strength by pull off according to EN 1542 greater than 1,5 N/mm².

6.3.1.4 Type MC (0,75)

The mix shall contain 235/240 kg/m³ cement (10/8 mm) and a water/cement ratio of 0,75 ± 0,05. Mixes shall have a 28 day mean compressive strength measured according to EN 12390-3 of (25 ± 5) N/mm² for cubes and (20 ± 5) N/mm² for cylinders and, when applicable, a median tensile bond strength by pull off according to EN 1542 greater than 1,2 N/mm².

6.3.1.5 Type MC (0,90)

The mix shall contain 195/210 kg/m³ cement (10/8 mm) and a water/cement ratio of $0,90 \pm 0,05$. Mixes shall have a 28 day mean compressive strength measured according to EN 12390-3 of (15 ± 5) N/mm² for cubes and (12 ± 5) N/mm² for cylinders and, when applicable, a median tensile bond strength by pull off according to EN 1542 greater than 0,8 N/mm².

Table 1 — Specifications for composition and properties

Concrete type	C(0,40)		C(0,45)		C(0,70)		MC(0,40)		MC(0,45)		MC(0,70)		MC(0,75)		MC(0,90)	
Maximum aggregate size, in mm	20	16	20	16	20	16	10	8	10	8	10	8	10	8	10	8
Water/cement ratio	0,40		0,45		0,70 ^a		0,4		0,45		0,70 ^a		0,75		0,90	
Cement content, in kg/m ³	410	425	360	375	260	275	455	470	395	410	290	305	230	245	195	210
28 day mean compressive strength ^b , in N/mm ²																
Cubes	60 ± 5		50 ± 5		30 ± 5		c		d _—		30 ± 5		25 ± 5		15 ± 5	
Cylinder	50 ± 5		40 ± 5		25 ± 5		c		d		25 ± 5		20 ± 5 ^f		12 ± 5 ^g	
Median tensile bond strength ^e , in N/mm ²	3,0		2,5		1,5		3,0		2,5		1,5		1,2		0,8	
Single minimum value tensile bond strength ^e , in N/mm ²	2,5		2,0		1,0		2,5		2,0		1,0		0,8		0,5	

^a The w/c ratio may be allowed to vary by ± 0,05 in order to achieve the required strength.

^b The compressive strength is measured according to EN 12390-3.

^c The requirements are usually met if the compressive strength of the concrete corresponds to the class C 50/60, according to EN 206.

^d The requirements are usually met if the compressive strength of the concrete corresponds to the class C 40/50, according to EN 206.

^e The tensile bond strength is measured according to EN 1542 (measurement of bond strength by pull-off).

^f The requirements are usually met if the compressive strength of the concrete corresponds to class C 25/30, according to EN 206.

^g The requirements are usually met if the compressive strength of the concrete corresponds to class C 16/20, according to EN 206.

6.4 Specimen preparation

The preparation of a reproducible reference concrete shall be done as follows:

- prepare a concrete batch the volume of which shall be of 50 % to 90 % of the mixer capacity;
- pour all dry aggregates into the container of the mixer, add half of the batch water and mix for 2 min;
- carry on the mixing and add the cement and the other half of the batch water containing possible admixtures during the next minute.

The total mixing time shall not be more than 5 min.

The mixed concrete shall be firmly compacted into the moulds using a chosen method to achieve uniform compaction, without segregation or excessive laitance. Any concrete above the upper edge of the mould should be removed using a steel float and the surface levelled flush with the sides of the mould.

6.5 Concrete curing and storage

The concrete specimens shall be cured in the moulds for 24 h after casting at (20 ± 2) °C, either under polyethylene sheeting or at not less than 95 % relative humidity, then demoulded and cured for a further 27 days under water at (20 ± 2) °C.

After the curing period, the specimens shall be either taken for test or stored under normal laboratory conditions of (21 ± 2) °C and (60 ± 10) % relative humidity, until ready for testing.

As required by the manufacturer of the repair product to be assessed, the preparation of the surface of the reference concrete shall be brought to a uniform condition, defined as follows:

- a) wet: immerse for 48 h at (21 ± 2) °C, then remove all surface water by standing the specimens upright for 30 min before using for tests;
- b) dry: condition for seven days at (21 ± 2) °C and at (60 ± 10) % relative humidity.

7 Surface preparation and roughness index determination

7.1 Surface preparation

The bottom face of the concrete specimens cured and stored according to 6.5 for at least 28 days shall be prepared by grit-blasting using a device as in 4.4 and the grit as in 5.5. The surface roughness shall be defined for the product properties to be tested.

Grit blasting shall be carried out with the specimen horizontal. The grit-blasting nozzle shall be held directly over the specimen surface at a distance of about 0,5 m, and slightly moved to achieve a uniform abrasion of the surface until the required roughness is obtained.

NOTE This is obtained when the tips of the largest aggregates are exposed by a significant amount.

7.2 Measurement of the Roughness index

The roughness shall be measured by the sand patch method. Ensure the surface is clean and dry. Fill the cylinder with 25 ml of the sand and, taking care not to compact the sand by any vibration, spread off the sand level with the top of the cylinder. Pour the sand into a heap on the prepared concrete surface and, keeping the face of the disc flat (see 4.5), carefully work the disc in a rotary motion so that the sand is spread into a circular patch, ensuring that all cavities are filled. The procedure is complete when no further distribution of sand outward is achieved. Measure the diameter of the sand patch to the nearest

1 mm at three equally spaced positions around the circumference and calculate the mean diameter, d , to the nearest millimetre. Calculate the roughness index, in millimetres, from the formula:

$$\text{Roughness index} = \frac{31800}{d^2}$$

NOTE Alternatively the volume of measuring cylinder and sand used can be altered, from 25 ml to 5 ml, to suit the area of concrete surface being measured, in which case the roughness index is calculated as follows:

$$\text{Roughness index} = \frac{V}{d^2} \times 1272$$

where

d is the mean diameter of sand patch, in millimetres, expressed to nearest 1 mm;

V is the volume of sand used, in millilitres.

The correspondence between the roughness index and volume of sand used is given in Table 2.

Table 2 — Correspondence between the roughness index and the volume of sand used

V , in ml	Coefficient C ($V \times 1272$)	Roughness index $\left(\frac{C}{d^2}, \text{ in mm} \right)$
5	6 360	$\frac{6360}{d^2}$
10	12 720	$\frac{12720}{d^2}$
15	19 080	$\frac{19080}{d^2}$
20	25 440	$\frac{25440}{d^2}$
25	31 800	$\frac{31800}{d^2}$

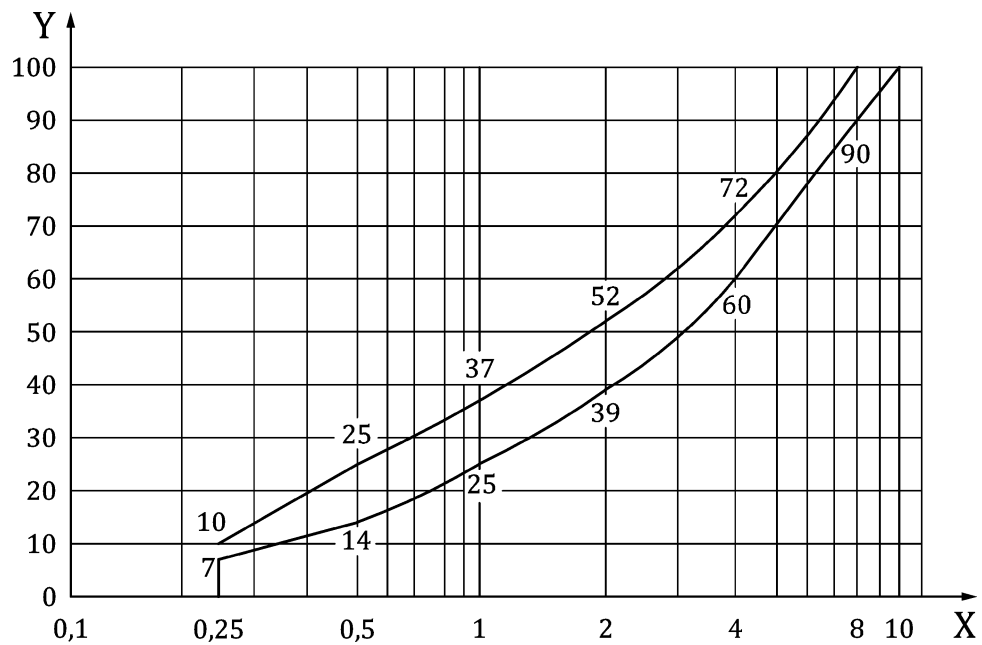
8 Report

The following information shall be recorded for the reference concrete specimens made from one batch:

- a) mix composition (including type of admixtures and additions, if any);
- b) date and time of production;
- c) origin and particle size distribution of the aggregates;
- d) curing and storage conditions (period and surface state);
- e) compressive strength (average and minimum value);
- f) tensile bond strength when required;
- g) roughness index;
- h) reference to this European Standard;
- i) any deviation from this European Standard.

Annex A
(informative)

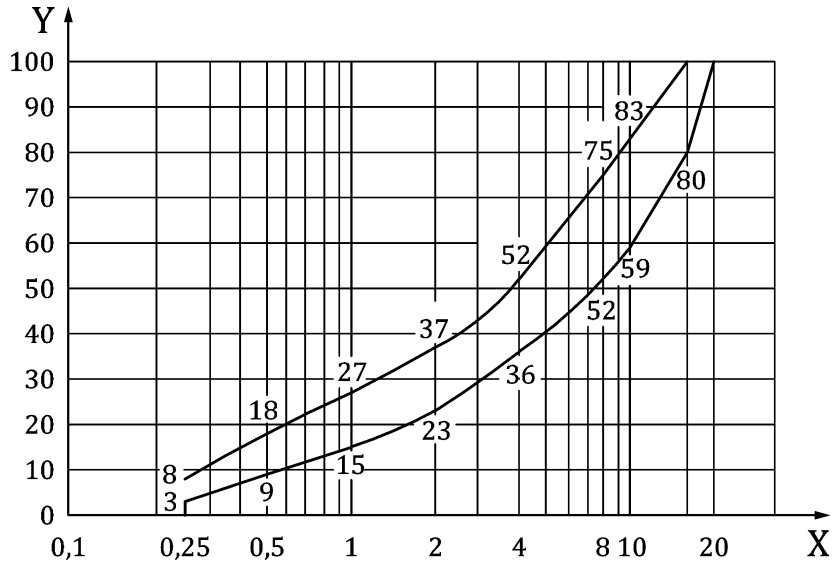
Grading curves



Key

- X grading (mm)
- Y percentage by mass

**Figure A.1 — Aggregate grading for reference concrete
(minimum/maximum lines for aggregate 8 mm/10 mm)**



Key

- X grading (mm)
- Y percentage by mass

**Figure A.2 — Aggregate grading for reference concrete
 (minimum/maximum lines for aggregate 16 mm/20 mm)**

British Standards Institution (BSI)

BSI is the national body responsible for preparing British Standards and other standards-related publications, information and services.

BSI is incorporated by Royal Charter. British Standards and other standardization products are published by BSI Standards Limited.

About us

We bring together business, industry, government, consumers, innovators and others to shape their combined experience and expertise into standards-based solutions.

The knowledge embodied in our standards has been carefully assembled in a dependable format and refined through our open consultation process. Organizations of all sizes and across all sectors choose standards to help them achieve their goals.

Information on standards

We can provide you with the knowledge that your organization needs to succeed. Find out more about British Standards by visiting our website at bsigroup.com/standards or contacting our Customer Services team or Knowledge Centre.

Buying standards

You can buy and download PDF versions of BSI publications, including British and adopted European and international standards, through our website at bsigroup.com/shop, where hard copies can also be purchased.

If you need international and foreign standards from other Standards Development Organizations, hard copies can be ordered from our Customer Services team.

Copyright in BSI publications

All the content in BSI publications, including British Standards, is the property of and copyrighted by BSI or some person or entity that owns copyright in the information used (such as the international standardization bodies) and has formally licensed such information to BSI for commercial publication and use.

Save for the provisions below, you may not transfer, share or disseminate any portion of the standard to any other person. You may not adapt, distribute, commercially exploit, or publicly display the standard or any portion thereof in any manner whatsoever without BSI's prior written consent.

Storing and using standards

Standards purchased in soft copy format:

- A British Standard purchased in soft copy format is licensed to a sole named user for personal or internal company use only.
- The standard may be stored on more than 1 device provided that it is accessible by the sole named user only and that only 1 copy is accessed at any one time.
- A single paper copy may be printed for personal or internal company use only.

Standards purchased in hard copy format:

- A British Standard purchased in hard copy format is for personal or internal company use only.
- It may not be further reproduced – in any format – to create an additional copy. This includes scanning of the document.

If you need more than 1 copy of the document, or if you wish to share the document on an internal network, you can save money by choosing a subscription product (see 'Subscriptions').

Reproducing extracts

For permission to reproduce content from BSI publications contact the BSI Copyright & Licensing team.

Subscriptions

Our range of subscription services are designed to make using standards easier for you. For further information on our subscription products go to bsigroup.com/subscriptions.

With **British Standards Online (BSOL)** you'll have instant access to over 55,000 British and adopted European and international standards from your desktop. It's available 24/7 and is refreshed daily so you'll always be up to date.

You can keep in touch with standards developments and receive substantial discounts on the purchase price of standards, both in single copy and subscription format, by becoming a **BSI Subscribing Member**.

PLUS is an updating service exclusive to BSI Subscribing Members. You will automatically receive the latest hard copy of your standards when they're revised or replaced.

To find out more about becoming a BSI Subscribing Member and the benefits of membership, please visit bsigroup.com/shop.

With a **Multi-User Network Licence (MUNL)** you are able to host standards publications on your intranet. Licences can cover as few or as many users as you wish. With updates supplied as soon as they're available, you can be sure your documentation is current. For further information, email subscriptions@bsigroup.com.

Revisions

Our British Standards and other publications are updated by amendment or revision.

We continually improve the quality of our products and services to benefit your business. If you find an inaccuracy or ambiguity within a British Standard or other BSI publication please inform the Knowledge Centre.

Useful Contacts

Customer Services

Tel: +44 345 086 9001

Email (orders): orders@bsigroup.com

Email (enquiries): cservices@bsigroup.com

Subscriptions

Tel: +44 345 086 9001

Email: subscriptions@bsigroup.com

Knowledge Centre

Tel: +44 20 8996 7004

Email: knowledgecentre@bsigroup.com

Copyright & Licensing

Tel: +44 20 8996 7070

Email: copyright@bsigroup.com

BSI Group Headquarters

389 Chiswick High Road London W4 4AL UK