

Adhesives for tiles — Concrete slabs for tests

The European Standard EN 1323:2007 has the status of a
British Standard

ICS 83.180; 91.100.10; 91.100.30

National foreword

This British Standard is the UK implementation of EN 1323:2007. It supersedes BS EN 1323:1999 which is withdrawn.

The UK participation in its preparation was entrusted to Technical Committee B/539, Ceramic tiles and other rigid tiling.

A list of organizations represented on this committee can be obtained on request to its secretary.

This publication does not purport to include all the necessary provisions of a contract. Users are responsible for its correct application.

Compliance with a British Standard cannot confer immunity from legal obligations.

This British Standard was published under the authority of the Standards Policy and Strategy Committee on 31 December 2007

© BSI 2007

ISBN 978 0 580 57394 1

Amendments issued since publication

Amd. No.	Date	Comments

EUROPEAN STANDARD

EN 1323

NORME EUROPÉENNE

EUROPÄISCHE NORM

August 2007

ICS 83.180; 91.100.10; 91.100.30

Supersedes EN 1323:1996

English Version

Adhesives for tiles - Concrete slabs for tests

Colles à carrelage - Plaques de béton pour essais

Mörtel und Klebstoffe für Fliesen und Platten - Betonplatten
für Prüfungen

This European Standard was approved by CEN on 21 January 2007.

CEN members are bound to comply with the CEN/GENELEC Internal Regulations which stipulate the conditions for giving this European Standard the status of a national standard without any alteration. Up-to-date lists and bibliographical references concerning such national standards may be obtained on application to the CEN Management Centre or to any CEN member.

This European Standard exists in three official versions (English, French, German). A version in any other language made by translation under the responsibility of a CEN member into its own language and notified to the CEN Management Centre has the same status as the official versions.

CEN members are the national standards bodies of Austria, Belgium, Bulgaria, Cyprus, Czech Republic, Denmark, Estonia, Finland, France, Germany, Greece, Hungary, Iceland, Ireland, Italy, Latvia, Lithuania, Luxembourg, Malta, Netherlands, Norway, Poland, Portugal, Romania, Slovakia, Slovenia, Spain, Sweden, Switzerland and United Kingdom.



EUROPEAN COMMITTEE FOR STANDARDIZATION
COMITÉ EUROPÉEN DE NORMALISATION
EUROPÄISCHES KOMITEE FÜR NORMUNG

Management Centre: rue de Stassart, 36 B-1050 Brussels

Contents

Page

Foreword.....	3
1 Scope	4
2 Normative references	4
3 Test conditions	4
4 Apparatus	4
4.1 Pull-head plates	4
4.2 Tensile testing machine	4
4.3 Carsten-Röhrchen flask	4
5 Concrete slab	4
5.1 Specification.....	4
5.2 Manufacture of the concrete slab	5
5.3 Conditioning of the concrete slab.....	5
5.4 Water absorption at the surface.....	5
6 Test report	6

Foreword

This document (EN 1323:2007) has been prepared by Technical Committee CEN/TC 67 “Ceramic tiles”, the secretariat of which is held by UNI.

This European Standard shall be given the status of a national standard, either by publication of an identical text or by endorsement, at the latest by February 2008, and conflicting national standards shall be withdrawn at the latest by February 2008.

This document supersedes EN 1323:1996.

According to the CEN/CENELEC Internal Regulations, the national standards organizations of the following countries are bound to implement this European Standard: Austria, Belgium, Bulgaria, Cyprus, Czech Republic, Denmark, Estonia, Finland, France, Germany, Greece, Hungary, Iceland, Ireland, Italy, Latvia, Lithuania, Luxembourg, Malta, Netherlands, Norway, Poland, Portugal, Romania, Slovakia, Slovenia, Spain, Sweden, Switzerland and United Kingdom.

1 Scope

This European Standard specifies the substrate (concrete slab) to be used for the determination of the properties of adhesives for tiles.

This European Standard does not contain performance requirements or recommendations for the design and installation of ceramic tiles.

NOTE Ceramic tile adhesives can also be used for other types of tiles (natural and agglomerated stones etc), if they do not adversely affect the stones.

2 Normative references

The following referenced documents are indispensable for the application of this document. For dated references, only the edition cited applies. For undated references, the latest edition of the referenced document (including any amendments) applies.

EN 197-1, *Cement — Part 1: Composition, specifications and conformity criteria for common cements*

3 Test conditions

The standard conditions shall be (23 ± 2) °C and (50 ± 5) % relative humidity and the air speed in the working area less than 0,2 m/s.

4 Apparatus

4.1 Pull-head plates

Square metallic (e.g. steel, aluminium) plates, with dimensions of (50 ± 1) mm x (50 ± 1) mm and a minimum thickness of 10 mm with a suitable fitting for connection to the tensile testing machine.

4.2 Tensile testing machine

A tensile testing machine for direct pull tensile force test and with suitable capacity and sensitivity for the test. The machine shall be capable of applying the load to the pull-head plate at the rate of (250 ± 50) N/s, through a suitable fitting that does not exert any bending force.

4.3 Carsten-Röhrchen flask

Carsten-Röhrchen flask or other suitable apparatus for measuring the water absorption at the surface of the concrete slab (see Figure 1).

5 Concrete slab

5.1 Specification

The concrete slab shall be at least 35 mm thick, have a moisture content of less than 3 % by mass (carbide method) and have a water absorption at the surface after 4 h in the range of 0,5 cm³ to 1,5 cm³ measured by the method described in 5.4.

The tensile adhesion strength shall be at least 1,5 N/mm². The tensile adhesion strength shall be determined by bonding at least five pull head plates (see 4.1) directly to the slab, e.g. with an epoxide resin, and determining the tensile adhesion strength by applying a force which increases at a constant rate of (250 ± 50) N/s.

The test surface shall have a finish similar to that obtained by using a wooden float and be clean and dust-free at the time of the test.

5.2 Manufacture of the concrete slab

The specification (see 5.1) can be achieved by using the following procedure to manufacture the concrete slab:

- binder: Portland cement type CEM I 42,5 R in accordance with EN 197-1;
- aggregate: gravel sand, of 0 mm to 8 mm particle size, continuous grading curve between A and B (see Figure 2);
- mix ratio binder and aggregate: 1:5 in proportion by mass;
- ultrafines content per m³ of ready mixed concrete: 500 kg/m³ prepared concrete. The concrete shall contain ultra fines in order to be properly workable and have a closed structure; the ultra fines content consists of cement and aggregate particle size up to 0,125 mm;
- water/cement ratio: 0,5 by mass;
- manufacture: vertically or horizontally in moulds, avoid the use of any mould release agent;
- compaction: 90 s on a vibrating table at 50 Hz.

5.3 Conditioning of the concrete slab

The slabs shall be stored for 24 h under standard conditions, followed by six days water immersion at (20 ± 2) °C.

Before being tested the concrete slabs shall be stored separately, in vertical position, in a dry and ventilated environment, for at least three months and conditioned for 24 h under standard conditions.

5.4 Water absorption at the surface

Water absorption at the surface of the concrete slab shall be determined by the following method.

- a) Bond a graduated glass measuring tube (Carsten-Röhrchen flask) to the concrete slab, by means of a suitable sealant.
- b) After the sealant has cured, fill the measuring tube with water, to the upper level.
- c) Record the water level every 60 min during the 4 h of the test, and draw the absorption as a function of time.
- d) Perform at least 3 tests on a reference concrete slab from each batch.

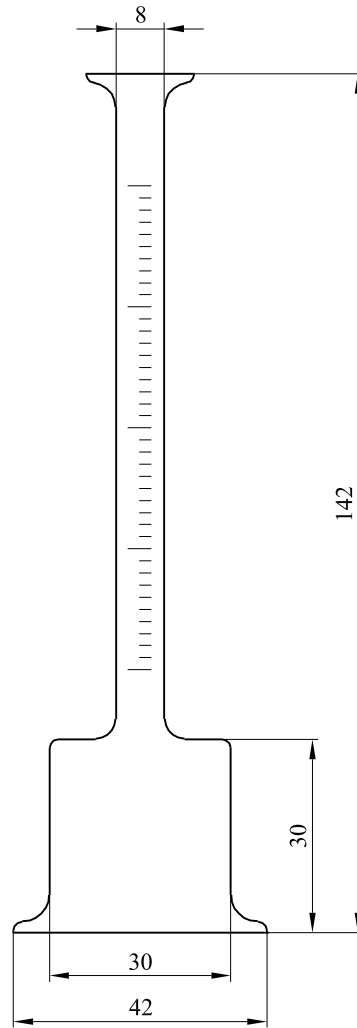
6 Test report

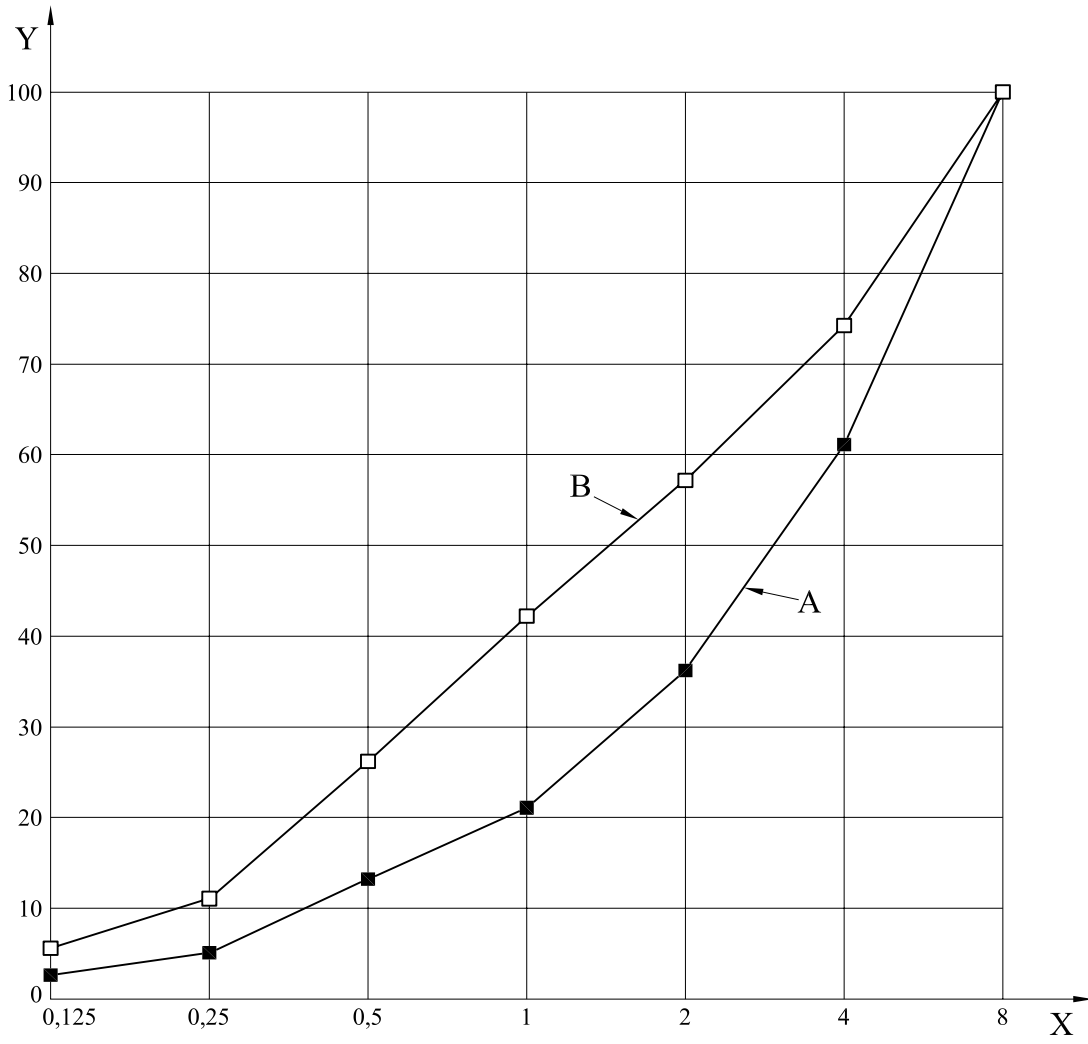
The following items shall be recorded in the test report:

- a) number and year of issue of this European Standard, i.e. EN 1323:2007;
- b) description of the concrete slab and reference to the batch;
- c) handling and storage of concrete slabs before testing;
- d) water absorption of concrete slab, representative of the batch;
- e) moisture content of concrete slabs, representative of the batch;
- f) tensile adhesion strength of concrete slab, representative of the batch;
- g) any other factor that could have influenced the result;
- h) date of the test.

The conformance of the concrete slabs to this European Standard shall be confirmed in the test report.

Dimensions in millimetres

**Figure 1 — Apparatus for evaluating water absorption**



Key

Y undersize as a percentage by mass

X nominal opening size in mm

Figure 2 — Grading curves for 8 mm maximum particle size

BSI — British Standards Institution

BSI is the independent national body responsible for preparing British Standards. It presents the UK view on standards in Europe and at the international level. It is incorporated by Royal Charter.

Revisions

British Standards are updated by amendment or revision. Users of British Standards should make sure that they possess the latest amendments or editions.

It is the constant aim of BSI to improve the quality of our products and services. We would be grateful if anyone finding an inaccuracy or ambiguity while using this British Standard would inform the Secretary of the technical committee responsible, the identity of which can be found on the inside front cover.
Tel: +44 (0)20 8996 9000. Fax: +44 (0)20 8996 7400.

BSI offers members an individual updating service called PLUS which ensures that subscribers automatically receive the latest editions of standards.

Buying standards

Orders for all BSI, international and foreign standards publications should be addressed to Customer Services. Tel: +44 (0)20 8996 9001.
Fax: +44 (0)20 8996 7001. Email: orders@bsi-global.com. Standards are also available from the BSI website at <http://www.bsi-global.com>.

In response to orders for international standards, it is BSI policy to supply the BSI implementation of those that have been published as British Standards, unless otherwise requested.

Information on standards

BSI provides a wide range of information on national, European and international standards through its Library and its Technical Help to Exporters Service. Various BSI electronic information services are also available which give details on all its products and services. Contact the Information Centre.
Tel: +44 (0)20 8996 7111. Fax: +44 (0)20 8996 7048. Email: info@bsi-global.com.

Subscribing members of BSI are kept up to date with standards developments and receive substantial discounts on the purchase price of standards. For details of these and other benefits contact Membership Administration.
Tel: +44 (0)20 8996 7002. Fax: +44 (0)20 8996 7001.
Email: membership@bsi-global.com.

Information regarding online access to British Standards via British Standards Online can be found at <http://www.bsi-global.com/bsonline>.

Further information about BSI is available on the BSI website at <http://www.bsi-global.com>.

Copyright

Copyright subsists in all BSI publications. BSI also holds the copyright, in the UK, of the publications of the international standardization bodies. Except as permitted under the Copyright, Designs and Patents Act 1988 no extract may be reproduced, stored in a retrieval system or transmitted in any form or by any means – electronic, photocopying, recording or otherwise – without prior written permission from BSI.

This does not preclude the free use, in the course of implementing the standard, of necessary details such as symbols, and size, type or grade designations. If these details are to be used for any other purpose than implementation then the prior written permission of BSI must be obtained.

Details and advice can be obtained from the Copyright & Licensing Manager.
Tel: +44 (0)20 8996 7070. Fax: +44 (0)20 8996 7553.
Email: copyright@bsi-global.com.