

BS EN 1026:2016



BSI Standards Publication

Windows and doors — Air permeability — Test method

National foreword

This British Standard is the UK implementation of EN 1026:2016. It supersedes BS EN 1026:2000 which is withdrawn.

The UK participation in its preparation was entrusted to Technical Committee B/538/1, Windows and doors.

A list of organizations represented on this committee can be obtained on request to its secretary.

This publication does not purport to include all the necessary provisions of a contract. Users are responsible for its correct application.

© The British Standards Institution 2016.
Published by BSI Standards Limited 2016

ISBN 978 0 580 82209 4

ICS 91.060.50

Compliance with a British Standard cannot confer immunity from legal obligations.

This British Standard was published under the authority of the Standards Policy and Strategy Committee on 30 June 2016.

Amendments/corrigenda issued since publication

| Date | Text affected |
|------|---------------|
|------|---------------|

EUROPEAN STANDARD

EN 1026

NORME EUROPÉENNE

EUROPÄISCHE NORM

March 2016

ICS 91.060.50

Supersedes EN 1026:2000

English Version

Windows and doors - Air permeability - Test methodFenêtres et portes - Perméabilité à l'air - Méthode
d'essaiFenster und Türen - Luftdurchlässigkeit -
Prüfverfahren

This European Standard was approved by CEN on 9 January 2016.

CEN members are bound to comply with the CEN/CENELEC Internal Regulations which stipulate the conditions for giving this European Standard the status of a national standard without any alteration. Up-to-date lists and bibliographical references concerning such national standards may be obtained on application to the CEN-CENELEC Management Centre or to any CEN member.

This European Standard exists in three official versions (English, French, German). A version in any other language made by translation under the responsibility of a CEN member into its own language and notified to the CEN-CENELEC Management Centre has the same status as the official versions.

CEN members are the national standards bodies of Austria, Belgium, Bulgaria, Croatia, Cyprus, Czech Republic, Denmark, Estonia, Finland, Former Yugoslav Republic of Macedonia, France, Germany, Greece, Hungary, Iceland, Ireland, Italy, Latvia, Lithuania, Luxembourg, Malta, Netherlands, Norway, Poland, Portugal, Romania, Slovakia, Slovenia, Spain, Sweden, Switzerland, Turkey and United Kingdom.

EUROPEAN COMMITTEE FOR STANDARDIZATION
COMITÉ EUROPÉEN DE NORMALISATION
EUROPÄISCHES KOMITEE FÜR NORMUNG**CEN-CENELEC Management Centre: Avenue Marnix 17, B-1000 Brussels**

| Contents | Page |
|--|-------------|
| European foreword | 3 |
| 1 Scope | 5 |
| 2 Normative references | 5 |
| 3 Terms and definitions | 5 |
| 4 Principle of test | 6 |
| 5 Test apparatus | 6 |
| 6 Preparation of test specimen | 7 |
| 7 Test procedure | 7 |
| 7.1 Preliminaries | 7 |
| 7.2 Air permeability of test chamber | 7 |
| 7.2.1 General | 7 |
| 7.2.2 Test chamber with known air permeability | 7 |
| 7.2.3 Test chamber with unknown air permeability | 7 |
| 7.3 Overall air permeability of test specimen and the test chamber – positive pressures | 8 |
| 7.3.1 General | 8 |
| 7.3.2 Measurement of air permeability for windows and external pedestrian doorsets | 8 |
| 7.3.3 Measurement of air permeability for internal pedestrian doorsets | 8 |
| 7.4 Overall air permeability of test specimen and the test chamber – negative pressures | 8 |
| 8 Test result | 8 |
| 9 Test report | 9 |
| Annex A (informative) Test pressure sequences | 16 |
| Bibliography | 17 |

European foreword

This document (EN 1026:2016) has been prepared by Technical Committee CEN/TC 33 “Doors, windows, shutters, building hardware and curtain walling”, the secretariat of which is held by AFNOR.

This European Standard shall be given the status of a national standard, either by publication of an identical text or by endorsement, at the latest by September 2016, and conflicting national standards shall be withdrawn at the latest by September 2016.

Attention is drawn to the possibility that some of the elements of this document may be the subject of patent rights. CEN [and/or CENELEC] shall not be held responsible for identifying any or all such patent rights.

This document supersedes EN 1026:2000.

The revision of this European Standard clarifies the test method and does not affect existing test evidence of EN 1026:2000.

In comparison with EN 1026:2000, the following significant changes were made:

- a) Clause 2: Deletion of "Normative references";
- b) Clause 3: Supplement of definition “closing condition”;
- c) Sub-clause 3.2: Simplification of definition “test pressure”;
- d) Sub-clause 3.4 and 3.5: Revision of definition „opening joint“;
- e) Sub-clause 5.4: Revision of definition „accuracy“;
- f) Sub-clause 7.3: Addition of „closing condition“;
- g) Sub-clause 7.3: Separate test methods for measurement of air permeability for windows and external pedestrian doorsets in 7.3.2 and for internal pedestrian doorsets in 7.3.3;
- h) Clause 9: Supplement of necessary description of test specimen;
- i) Clause 9: Revision of Figures 1 and 2;
- j) Clause 9: Supplement of figures:
 - Figure 3 - Sliding door test specimen;
 - Figure 4 - Single leaf test specimen with fixed glazing;
 - Figure 5 - Single leaf test specimen with fixed glazing, extension profiles and shutter boxes;
 - Figure 6 - External / internal pedestrian doorset;
- k) Revision of Annex A: Separation of figures into Figures A.1 and A.2.

According to the CEN/CENELEC Internal Regulations, the national standards organizations of the following countries are bound to implement this European Standard: Austria, Belgium, Bulgaria,

Croatia, Cyprus, Czech Republic, Denmark, Estonia, Finland, Former Yugoslav Republic of Macedonia, France, Germany, Greece, Hungary, Iceland, Ireland, Italy, Latvia, Lithuania, Luxembourg, Malta, Netherlands, Norway, Poland, Portugal, Romania, Slovakia, Slovenia, Spain, Sweden, Switzerland, Turkey and the United Kingdom.

1 Scope

This European Standard defines the test method to be used to determine the air permeability of completely assembled windows and doorsets of any material, when submitted to positive or negative test pressures. This test method is designed to take account of conditions in use, when the window or doorset is installed in accordance with the manufacturer's specification and the requirements of relevant European Standards and codes of practice.

This European Standard does not apply to the joints between the window or door frame and the building construction.

2 Normative references

Not applicable.

3 Terms and definitions

For the purposes of this document, the following terms and definitions apply.

3.1

closing condition

3.1.1

closed

movable part rest in or at the fixed part in a way in which they may be fastened (latched and/or locked)

3.1.2

fastened

where the movable part is restrained at one or more points and shall be described by at least one of the two as listed below:

3.1.2.1

latched

movable part is returned to its closed position and restrained by either

a) a self - engaging fastener or

b) a roller catch or

c) a latch

3.1.2.2

locked

movable part is further restrained in the closed position by additional operations (of e.g. handle, key, automatic devices or electronic devices) to engage integrated locking devices (e.g. nutbolts or deadbolts) which will affect the product's characteristics

3.1.3

secured

any action(s) which prevent unauthorised release of the fastening device(s) to allow exit or entry (e.g. child safety, burglary)

3.2

test pressure

difference between the static air pressures inside and outside of the test chamber

Note 1 to entry: The test pressure is positive if the static air pressure inside the chamber of the test apparatus is higher than that outside the test chamber.

Note 2 to entry: The test pressure is negative if the static air pressure inside the chamber of the test apparatus is lower than that outside the test chamber.

3.3 air permeability

amount of air passing through all joints between casement or leaf and frame profiles of a test specimen caused by the test pressure

Note 1 to entry: Air permeability should be expressed in cubic metres per hour (m^3/h).

3.4 opening joint

line of discontinuity between either a frame and its matched component or two components which can be opened by means of their building hardware (see Figures 1 to 6)

Note 1 to entry: Conventionally, this discontinuity is as seen from the opening face of the test specimen.

3.5 length of opening joint

length of the line of discontinuity as defined in 3.4 (see Figures 1 to 6)

Note 1 to entry: The length of joint should be expressed in metres (m).

Note 2 to entry: Actual length of gaskets or seals fitted into the underlying profiles of the components or joints of components built into opening parts are not relevant.

3.6 overall area

area of the test specimen measured parallel to the glazing or the leaf (see Figures 1 to 6)

Note 1 to entry: The overall area should be expressed in square metres (m^2).

4 Principle of test

Application of a defined series of test pressures (positive and negative) and at each test pressure measurement of the air permeability with a suitable test device.

5 Test apparatus

5.1 A chamber with an open side to which the test specimen can be fitted. It shall be constructed so as to be able to withstand the test pressures without deflecting to an extent likely to influence the test results.

5.2 Means for applying controlled test pressure to the test specimen.

5.3 Means of producing rapid changes in test pressure, controlled within defined limits.

5.4 Instrument suitable for measuring the quantity of air flow into or out of the chamber with an accuracy of $\pm 5\%$ of the measured value for air flows greater than $1 \text{ m}^3/\text{h}$ and an accuracy of $\pm 0,05 \text{ m}^3/\text{h}$ for air flows equal to or smaller than $1 \text{ m}^3/\text{h}$.

NOTE 1 Accuracy = \pm (the sum of the amount of the error plus the amount of the expanded measurement uncertainty). For values of both error and expanded measurement uncertainty see last calibration certificate of the instrument.

NOTE 2 For vocabulary of metrology see ISO/IEC Guide 99:2007.

5.5 Means of measuring the test pressure applied across the test specimen, within an accuracy of $\pm 5\%$.

5.6 Means of sealing all joints of the test specimen, when required.

6 Preparation of test specimen

The test specimen shall be fixed as intended for use without any twists or bends which may influence the test results. The test specimen shall be fully operable. The test specimen shall be cleaned and surfaces dry. Ventilation devices, if any, shall be taped over, except when it is required to determine the amount of air flow through such devices.

7 Test procedure

7.1 Preliminaries

The ambient temperature and humidity close to the test specimen shall be within the range of 10 °C to 30 °C and 25 % to 75 % RH and the test specimen shall be conditioned thus for at least 4 h immediately before testing.

Temperature shall be measured to within ± 3 °C and relative humidity to within $\pm 5\%$. Atmospheric pressure shall be measured to within ± 1 kPa.

The test pressure shall be applied in steps of 50 Pa up to 300 Pa and from 300 Pa in steps of 150 Pa.

The air permeability result shall be given to an accuracy of $\pm 10\%$. For air permeability under 3,0 m³/h the accuracy shall be $\pm 0,30$ m³/h.

7.2 Air permeability of test chamber

7.2.1 General

Determine the procedure to follow in accordance with what is known about the air permeability of the test chamber.

7.2.2 Test chamber with known air permeability

Assume the air permeability of the test chamber is zero if it is less than 5 % of the maximum air permeability permitted throughout the range of the classification that is attributed to the test specimen.

When this is not so, measure the air permeability of the test chamber as described in 7.2.3 unless it is known and shown to be approximately constant within the limit of accuracy of the measurement recorded by the test laboratory.

In no case shall the air permeability of the test chamber exceed 30 % of the overall air permeability of the test specimen and the test chamber.

7.2.3 Test chamber with unknown air permeability

Seal all joints in the test specimen with adhesive tape or an airtight sheet covering the whole test specimen.

Measure the air permeability of the test chamber with negative test pressures as described in 7.4, but without pressure pulses.

After the determination of the air permeability of the test chamber remove the adhesive tape or airtight sheet covering the test specimen. In no case shall the air permeability of the test chamber exceed 30 % of the overall air permeability of the test specimen and the test chamber.

7.3 Overall air permeability of test specimen and the test chamber – positive pressures

7.3.1 General

All the opening parts of the test specimen shall be opened and closed at least once before the test. After that the test specimen shall be brought into the closing condition in accordance with the manufacturer's requirements.

Measure the air permeability of the test specimen with positive test pressures as described in 7.3.2 or 7.3.3 (see Annex A).

7.3.2 Measurement of air permeability for windows and external pedestrian doorsets

Apply three pressure pulses each 10 % greater than the maximum test pressure to be used in the test or 500 Pa, whichever is greater. The time to reach the maximum test pressure shall be not less than 1 s and the pressure shall be sustained for at least 3 s. Apply positive test pressure steps as specified in 7.1. Measure and record the air permeability at each step. The duration of each step shall be sufficient to allow the test pressure to stabilise before the air permeability is measured.

NOTE This clause may be applicable to internal doorsets alternatively to 7.3.3.

7.3.3 Measurement of air permeability for internal pedestrian doorsets

Apply three pressure pulses each 10 % greater than the maximum test pressure to be used in the test or 150 Pa, whichever is greater. The time to reach the maximum test pressure shall be not less than 1 s and the pressure shall be sustained for at least 3 s. Apply positive test pressure steps as specified in 7.1. Measure and record the air permeability at each step. The duration of each step shall be sufficient to allow the test pressure to stabilise before the air permeability is measured.

7.4 Overall air permeability of test specimen and the test chamber – negative pressures

All the openable parts of the test specimen shall be opened and closed at least once before the test. After that the test specimen shall be brought into the defined closing condition in accordance with the manufacturer's instructions.

Measure the air permeability of the test specimen and test chamber with negative test pressures as described in 7.3.2 for windows and pedestrian external doorsets or 7.3.3 for pedestrian internal doorsets (see Annex A).

8 Test result

8.1 Adjust the result of the air flow measurements of the test specimen (Q_x) at each step, to calculate the air flow (Q_0) at normal conditions ($T_0 = 293$ K, $p_0 = 101,3$ kPa), considering the actual temperature T_x expressing in °C and atmospheric pressure p_x expressed in kPa, during the test.

$$Q_0 = Q_x \cdot \frac{293}{273 + T_x} \cdot \frac{p_x}{101,3} \quad (1)$$

where

Q_0 is the air flow, in cubic metre per hour ($\frac{m^3}{h}$);

Q_x is the air flow measurements of the test specimen, in cubic metre per hour ($\frac{m^3}{h}$);

T_x is the actual temperature, in degree Celsius ($^{\circ}\text{C}$);

p_x is the atmospheric pressure, in kilo Pascal (kPa).

8.2 For a test specimen the air permeability at each step is equal to the overall air permeability adjusted in accordance with 8.1 less the air permeability of the chamber, when not zero, adjusted in accordance with 8.1.

8.3 Using the length of the opening joint as defined in 3.5 and the overall area as defined in 3.6 calculate the air permeability in terms of $m^3 / (h \cdot m)$ and $m^3 / (h \cdot m^2)$ expressing the results to two significant figures.

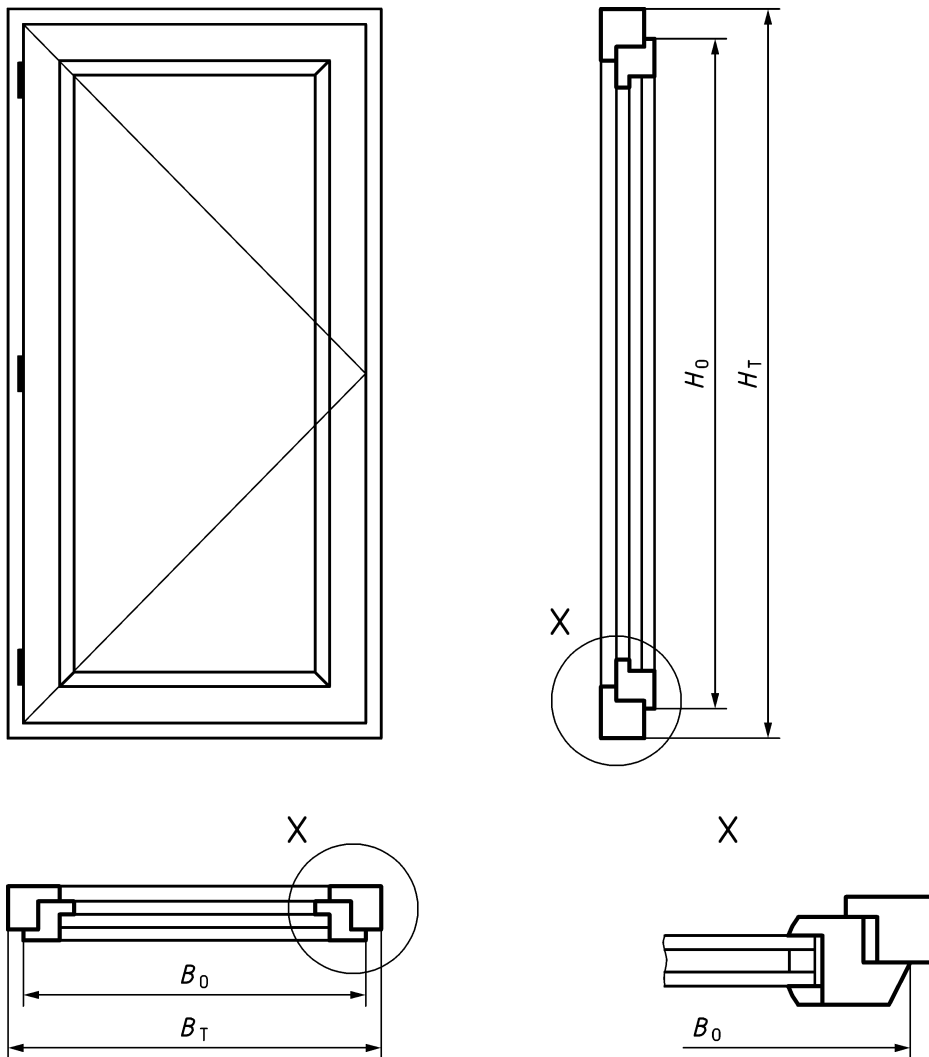
8.4 Record on a graph the air permeability (Q_0) related to the length of joint (Q_L) and the overall area (Q_A), for each pressure step.

9 Test report

The test report shall state the airflow measurement devices used for the test and, if needed, record on a drawing or a photograph of the test specimen, the location of any significant points or air leakage observed. The report shall contain as a minimum the following information:

- a) Reference to this European Standard;
- b) the name of the test institution;
- c) date of the test;
- d) all necessary references to identify the test specimen and the method of sampling;
- e) all relevant details concerning the dimensions of the test specimen, its materials, design, construction and manufacture and its surface finish and fittings, including building hardware, locking points, their position and specific design (e.g. with / without rear-engaging, mushroom cams), relevant gaskets and/or seals with positions of the gaps where they are seated;
- f) exposed face: opening inwards or outwards;
- g) description of the closing conditions, as tested:
 - closed,
 - latched,
 - locked;
- h) dimensioned drawings of all relevant details of the test specimen including cross section; the fixing of the frame strikers (number of screws used for the fixing, and details into which material they were screw-fixed) shall be clearly depicted in these drawings (see e.g. Figures 1 to 6);
- i) presence of ventilation, type and condition (i.e. closed, taped over, etc.);

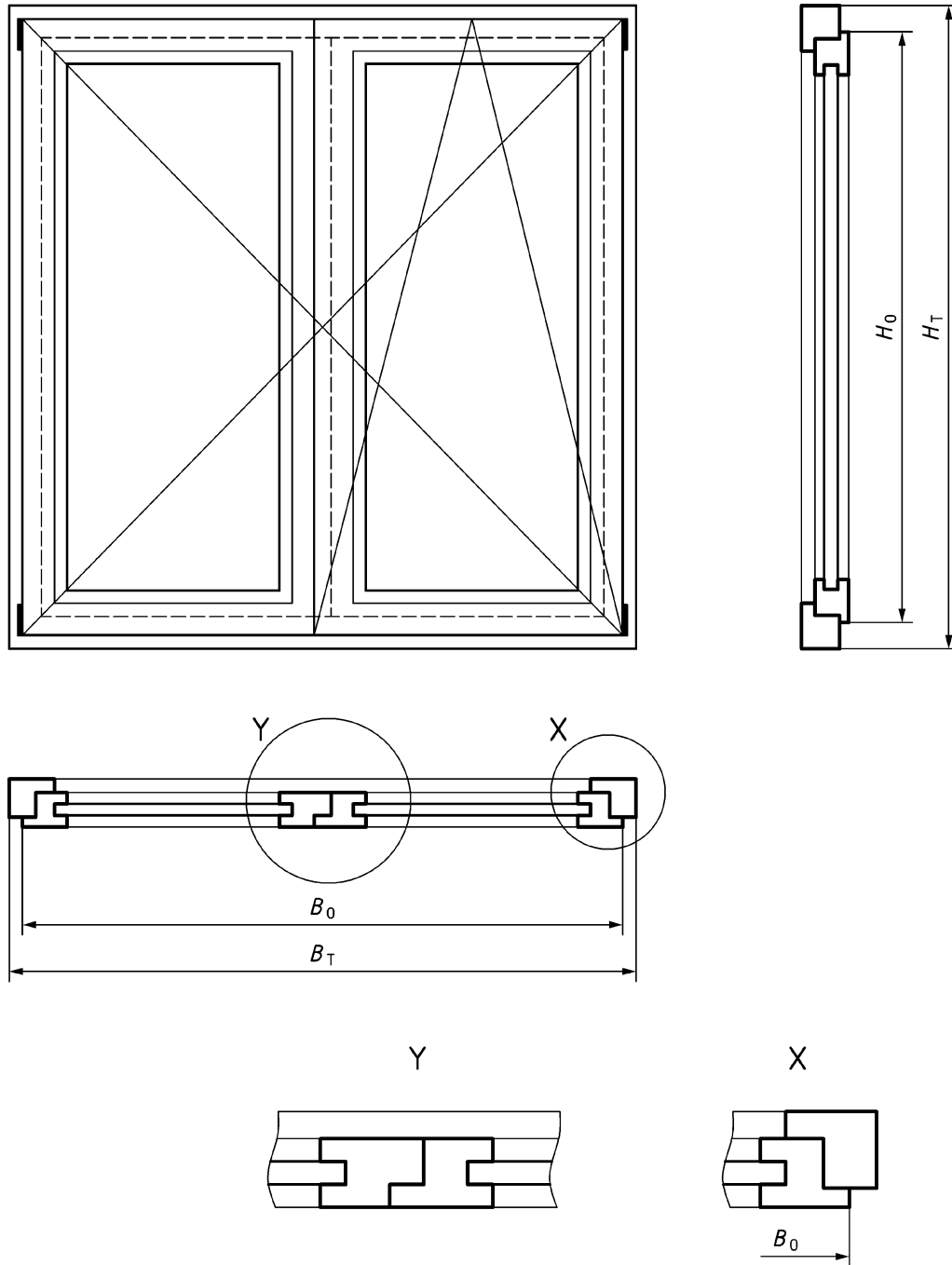
- j) test method;
- k) test procedures, including storage and conditioning prior to test, and mounting the test specimen ready for test; measurement uncertainty;
- l) test climates used;
- m) test result.



Key

| | |
|---------------------------|------------------|
| B_0 | casement width |
| B_T | frame width |
| H_0 | casement height |
| H_T | frame height |
| Length of opening joints: | $2 H_0 + 2 B_0$ |
| Overall area: | $H_T \times B_T$ |

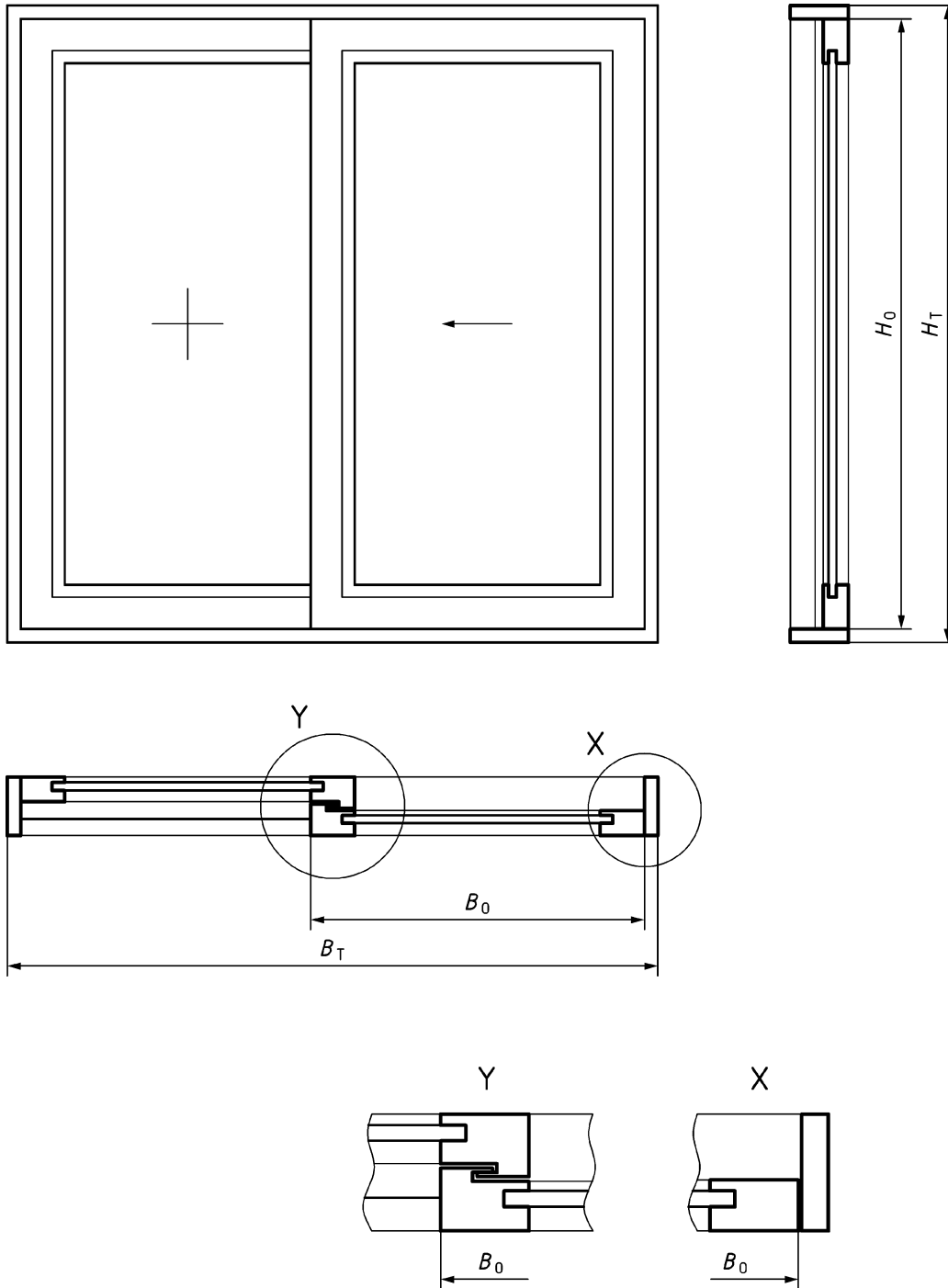
Figure 1 — Single leaf test specimen



Key

| | |
|---------------------------|------------------|
| B_0 | casement width |
| B_T | frame width |
| H_0 | casement height |
| H_T | frame height |
| Length of opening joints: | $3 H_0 + 2 B_0$ |
| Overall area: | $H_T \times B_T$ |

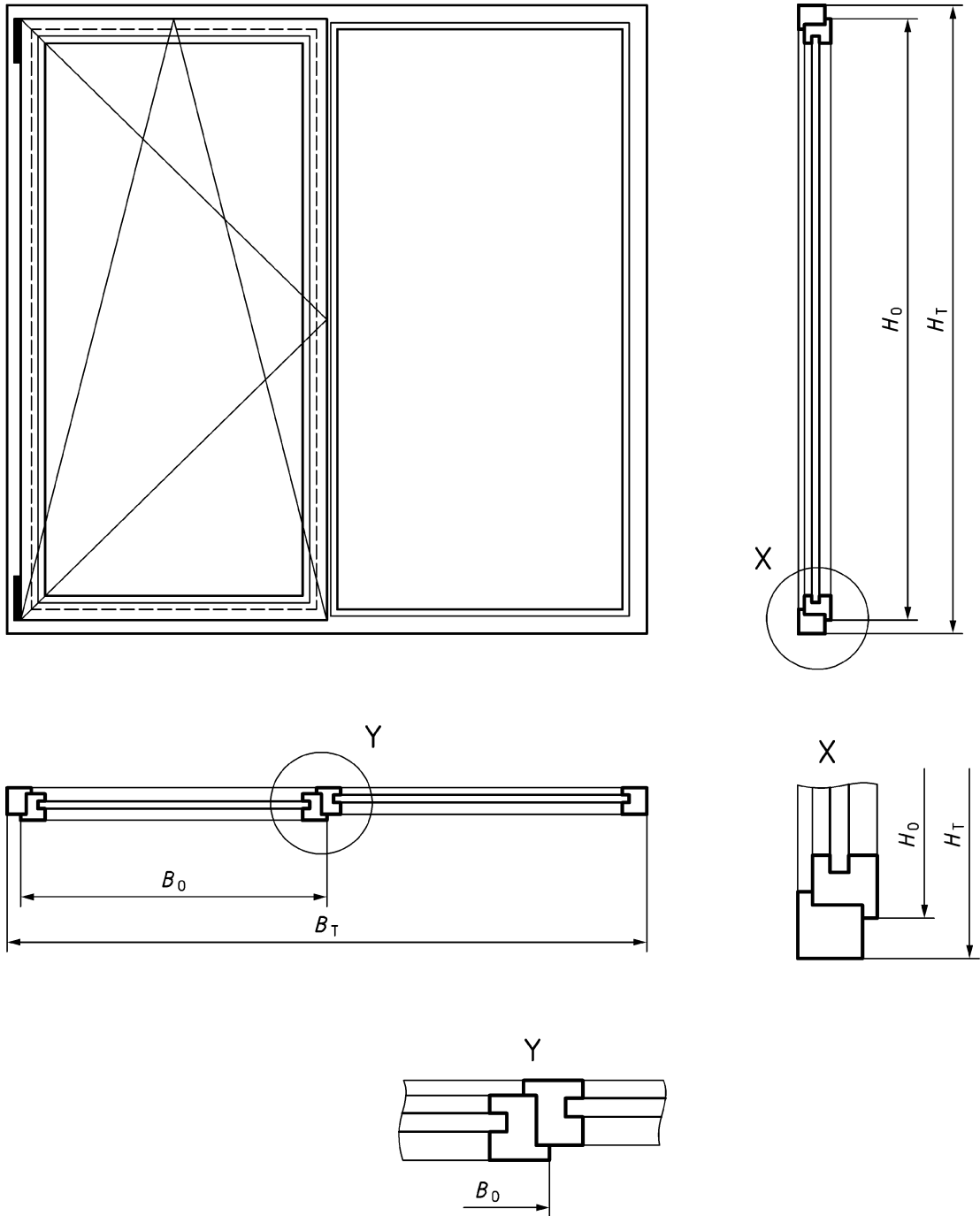
Figure 2 — Double casement



Key

| | |
|---------------------------|------------------|
| B_0 | casement width |
| B_T | frame width |
| H_0 | casement height |
| H_T | frame height |
| Length of opening joints: | $2 H_0 + 2 B_0$ |
| Overall area: | $H_T \times B_T$ |

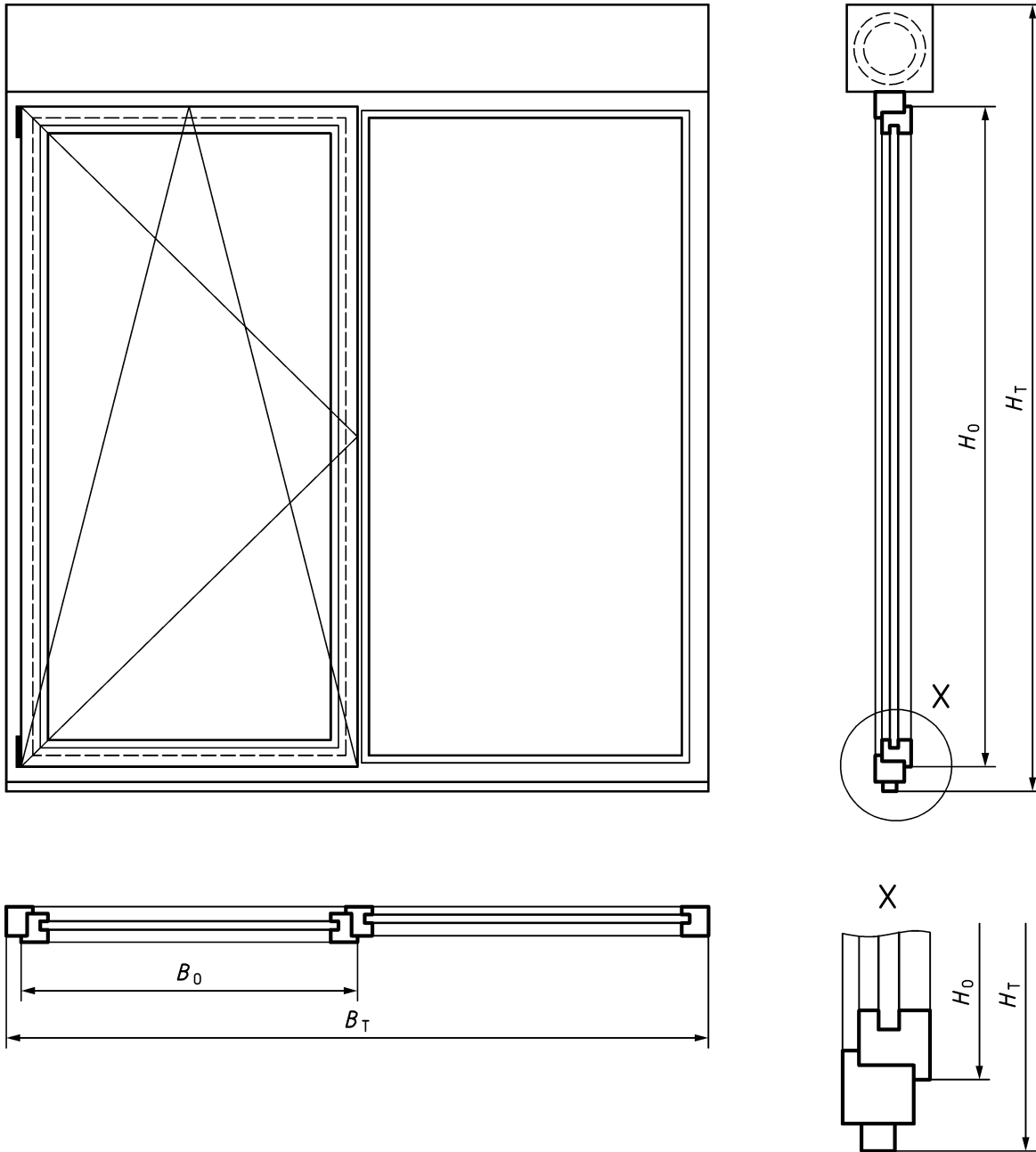
Figure 3 — Sliding doorset test specimen



Key

| | |
|---------------------------|------------------|
| B_0 | casement width |
| B_T | frame width |
| H_0 | casement height |
| H_T | frame height |
| Length of opening joints: | $2 H_0 + 2 B_0$ |
| Overall area: | $H_T \times B_T$ |

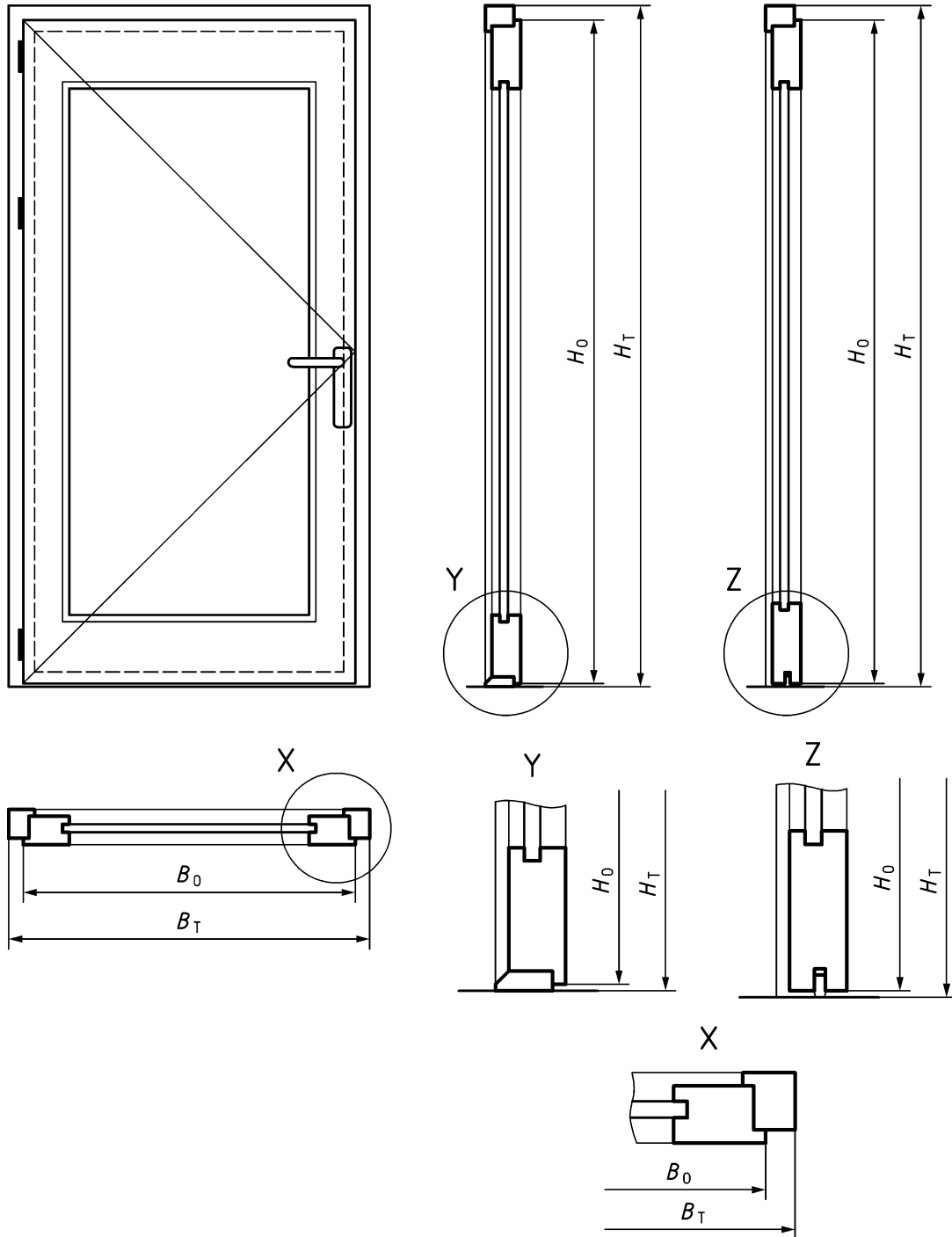
Figure 4 — Single leaf test specimen with fixed glazing



Key

| | |
|---------------------------|------------------|
| B_0 | casement width |
| B_T | frame width |
| H_0 | casement height |
| H_T | frame height |
| Length of opening joints: | $2 H_0 + 2 B_0$ |
| Overall area: | $H_T \times B_T$ |

Figure 5 — Single leaf test specimen with fixed glazing, extension profiles and shutter boxes



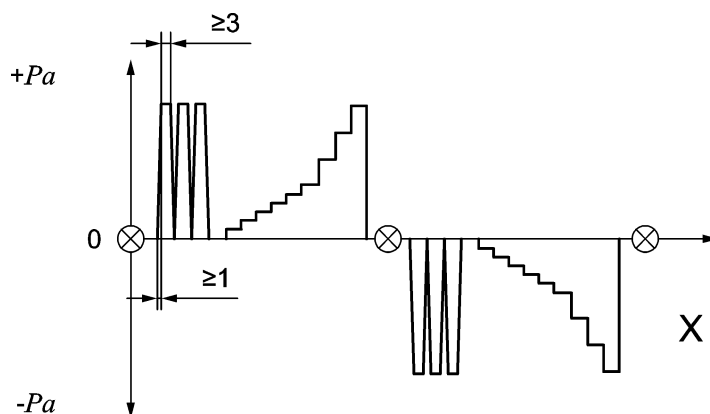
Key

| | |
|---------------------------|------------------|
| B_0 | casement width |
| B_T | frame width |
| H_0 | casement height |
| H_T | frame height |
| Length of opening joints: | $2 H_0 + 2 B_0$ |
| Overall area: | $H_T \times B_T$ |

Figure 6 — Pedestrian external / internal doorset

Annex A (informative)

Test pressure sequences

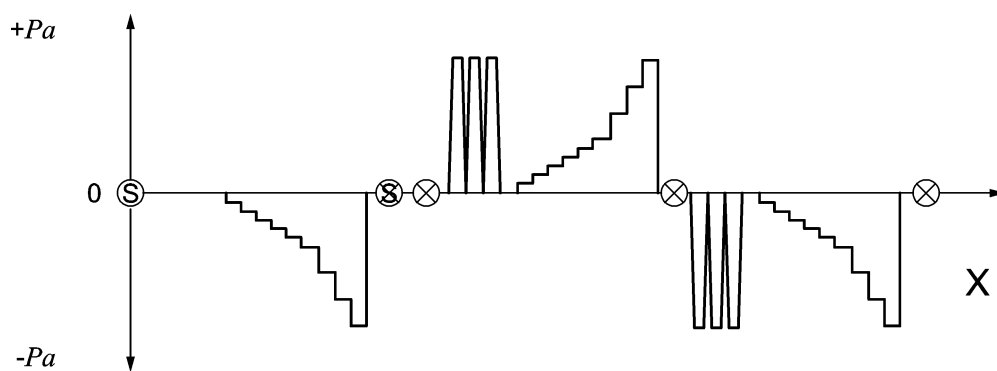


Key

X time, in seconds (s)

⊗ opening and closing operation

Figure A.1 — Test pressure sequence for airtight test chambers



Key

X time

⊗ opening and closing operation

Ⓢ sealing of test specimen joints

⊗ unsealing of test specimen joints

Figure A.2 — Test pressure sequence for non-airtight test chambers

Bibliography

EN 12207, *Windows and doors — Air permeability — Classification*

ISO/IEC Guide 99:2007, *International vocabulary of metrology — Basic and general concepts and associated terms (VIM)*

British Standards Institution (BSI)

BSI is the national body responsible for preparing British Standards and other standards-related publications, information and services.

BSI is incorporated by Royal Charter. British Standards and other standardization products are published by BSI Standards Limited.

About us

We bring together business, industry, government, consumers, innovators and others to shape their combined experience and expertise into standards-based solutions.

The knowledge embodied in our standards has been carefully assembled in a dependable format and refined through our open consultation process. Organizations of all sizes and across all sectors choose standards to help them achieve their goals.

Information on standards

We can provide you with the knowledge that your organization needs to succeed. Find out more about British Standards by visiting our website at bsigroup.com/standards or contacting our Customer Services team or Knowledge Centre.

Buying standards

You can buy and download PDF versions of BSI publications, including British and adopted European and international standards, through our website at bsigroup.com/shop, where hard copies can also be purchased.

If you need international and foreign standards from other Standards Development Organizations, hard copies can be ordered from our Customer Services team.

Copyright in BSI publications

All the content in BSI publications, including British Standards, is the property of and copyrighted by BSI or some person or entity that owns copyright in the information used (such as the international standardization bodies) and has formally licensed such information to BSI for commercial publication and use.

Save for the provisions below, you may not transfer, share or disseminate any portion of the standard to any other person. You may not adapt, distribute, commercially exploit, or publicly display the standard or any portion thereof in any manner whatsoever without BSI's prior written consent.

Storing and using standards

Standards purchased in soft copy format:

- A British Standard purchased in soft copy format is licensed to a sole named user for personal or internal company use only.
- The standard may be stored on more than 1 device provided that it is accessible by the sole named user only and that only 1 copy is accessed at any one time.
- A single paper copy may be printed for personal or internal company use only.

Standards purchased in hard copy format:

- A British Standard purchased in hard copy format is for personal or internal company use only.
- It may not be further reproduced – in any format – to create an additional copy. This includes scanning of the document.

If you need more than 1 copy of the document, or if you wish to share the document on an internal network, you can save money by choosing a subscription product (see 'Subscriptions').

Reproducing extracts

For permission to reproduce content from BSI publications contact the BSI Copyright & Licensing team.

Subscriptions

Our range of subscription services are designed to make using standards easier for you. For further information on our subscription products go to bsigroup.com/subscriptions.

With **British Standards Online (BSOL)** you'll have instant access to over 55,000 British and adopted European and international standards from your desktop. It's available 24/7 and is refreshed daily so you'll always be up to date.

You can keep in touch with standards developments and receive substantial discounts on the purchase price of standards, both in single copy and subscription format, by becoming a **BSI Subscribing Member**.

PLUS is an updating service exclusive to BSI Subscribing Members. You will automatically receive the latest hard copy of your standards when they're revised or replaced.

To find out more about becoming a BSI Subscribing Member and the benefits of membership, please visit bsigroup.com/shop.

With a **Multi-User Network Licence (MUNL)** you are able to host standards publications on your intranet. Licences can cover as few or as many users as you wish. With updates supplied as soon as they're available, you can be sure your documentation is current. For further information, email subscriptions@bsigroup.com.

Revisions

Our British Standards and other publications are updated by amendment or revision.

We continually improve the quality of our products and services to benefit your business. If you find an inaccuracy or ambiguity within a British Standard or other BSI publication please inform the Knowledge Centre.

Useful Contacts

Customer Services

Tel: +44 345 086 9001

Email (orders): orders@bsigroup.com

Email (enquiries): cservices@bsigroup.com

Subscriptions

Tel: +44 345 086 9001

Email: subscriptions@bsigroup.com

Knowledge Centre

Tel: +44 20 8996 7004

Email: knowledgecentre@bsigroup.com

Copyright & Licensing

Tel: +44 20 8996 7070

Email: copyright@bsigroup.com

BSI Group Headquarters

389 Chiswick High Road London W4 4AL UK