

Stationary training equipment —

Part 8: Steppers, stairclimbers and climbers — Additional specific safety requirements and test methods

The European Standard EN 957-8:1998 has the status of a
British Standard

ICS 97.220.30

National foreword

This British Standard is the English language version of EN 957-8:1998.

The UK participation in its preparation was entrusted by Technical Committee SW/136, Sports, playground and other recreational equipment, to Subcommittee SW/136/4, Stationary training equipment, which has the responsibility to:

- aid enquirers to understand the text;
- present to the responsible European committee any enquiries on the interpretation, or proposals for change, and keep the UK interests informed;
- monitor related international and European developments and promulgate them in the UK.

A list of organizations represented on this subcommittee can be obtained on request to its secretary.

Cross-references

The British Standards which implement international or European publications referred to in this document may be found in the BSI Standards Catalogue under the section entitled "International Standards Correspondence Index", or by using the "Find" facility of the BSI Standards Electronic Catalogue.

A British Standard does not purport to include all the necessary provisions of a contract. Users of British Standards are responsible for their correct application.

Compliance with a British Standard does not of itself confer immunity from legal obligations.

Summary of pages

This document comprises a front cover, an inside front cover, the EN title page, pages 2 to 8, an inside back cover and a back cover.

Amendments issued since publication

Amd. No.	Date	Text affected

This British Standard, having been prepared under the direction of the Consumer Products and Services Sector Committee, was published under the authority of the Standards Committee and comes into effect on 15 December 1998

© BSI 1998

ISBN 0 580 30089 7

ICS 97.220.30

Descriptors: sport equipment, gymnastic equipment, fixed equipment, escalators, mountaineering, simulation, specifications, safety, tests, technical notices

English version

Stationary training equipment — Part 8: Steppers, stairclimbers and climbers — Additional specific safety requirements and test methods

Appareils d'entraînement fixes —
Partie 8: Monte-escaliers, escalators et simulateurs
d'escalade – Prescriptions spécifiques de sécurité et
méthodes d'essai supplémentaires

Stationäre Trainingsgeräte —
Teil 8: Stepper, Treppensteigergeräte und Climber —
Zusätzliche besondere sicherheitstechnische
Anforderungen und Prüfverfahren

This European Standard was approved by CEN on 6 June 1998.

CEN members are bound to comply with the CEN/CENELEC Internal Regulations which stipulate the conditions for giving this European Standard the status of a national standard without any alteration. Up-to-date lists and bibliographical references concerning such national standards may be obtained on application to the Central Secretariat or to any CEN member.

This European Standard exists in three official versions (English, French, German). A version in any other language made by translation under the responsibility of a CEN member into its own language and notified to the Central Secretariat has the same status as the official versions.

CEN members are the national standards bodies of Austria, Belgium, Czech Republic, Denmark, Finland, France, Germany, Greece, Iceland, Ireland, Italy, Luxembourg, Netherlands, Norway, Portugal, Spain, Sweden, Switzerland and United Kingdom.

CEN

European Committee for Standardization
Comité Européen de Normalisation
Europäisches Komitee für Normung

Central Secretariat: rue de Stassart 36, B-1050 Brussels

Foreword

This European Standard has been prepared by Technical Committee CEN/TC 136, Sports, playground and other recreational equipment, the Secretariat of which is held by DIN.

This European Standard shall be given the status of a national standard, either by publication of an identical text or by endorsement, at the latest by December 1998, and conflicting national standards shall be withdrawn at the latest by December 1998.

This standard, EN 957 *Stationary training equipment*, consists of the following parts:

Part 1: *General safety requirements and test methods*

Part 2: *Strength training equipment, additional specific safety requirements and test methods*

Part 4: *Strength training benches, additional specific safety requirements and test methods*

Part 5: *Pedal crank training equipment, additional specific safety requirements and test methods*

Part 6: *Treadmills, additional specific safety requirements and test methods*

Part 7: *Rowing machines, additional specific safety requirements and test methods*

Part 8: *Steppers, stairclimbers and climbers, additional specific safety requirements and test methods*

According to the CEN/CENELEC Internal Regulations, the national standards organizations of the following countries are bound to implement this European Standard: Austria, Belgium, Czech Republic, Denmark, Finland, France, Germany, Greece, Iceland, Ireland, Italy, Luxembourg, Netherlands, Norway, Portugal, Spain, Sweden, Switzerland and the United Kingdom.

Contents

	Page
Foreword	2
Introduction	3
1 Scope	3
2 Normative references	3
3 Definitions	3
4 Classification	5
5 Safety requirements	5
6 Test methods	7
7 Additional instructions for use	8

Introduction

This part of EN 957 concerns the safety of steppers, stairclimbers and climbers.

It amends and supplements EN 957-1. The requirements of this specific standard take priority over those in the general standard.

1 Scope

This part of EN 957 specifies safety requirements for stepper, stairclimber and climber machines (hereafter called training equipment) in addition to the general safety requirements of EN 957-1 and should be read in conjunction with it.

This part of EN 957 is applicable to stationary training equipment type stepper, stairclimber and climber training equipment (type 8) within classes S and H, and class A for accuracy.

2 Normative references

This European Standard incorporates, by dated or undated reference, provisions from other publications. These normative references are cited at the appropriate places in the text and the publications are listed hereafter. For dated references, subsequent amendments to or revisions of any of these publications apply to this European Standard only when incorporated in it by amendment or revision. For undated references, the latest edition of the publication referred to applies.

EN 71-1, *Safety of toys — Part 1: Mechanical and physical properties.*

EN 957-1:1996, *Stationary training equipment — Part 1: General safety requirements and test methods.*

ISO 5904, *Gymnastic equipment — Landing mats and surfaces for floor exercises — Determination of resistance to slipping.*

3 Definitions

For the purposes of this standard the definitions of EN 957-1 and the following apply.

3.1

stepper

stationary training equipment where the feet move in a reciprocating motion without the foot having to leave the foot pedal (see Figure 1)

3.2

stairclimber

stationary training equipment similar to a moving mechanical staircase or escalator (see Figure 2)

NOTE Work is carried out by simulating climbing a conventional staircase.

3.3

climber

stationary training equipment that is equipped with feet and hand positions that can be moved in a reciprocating motion (see Figure 3)

3.4

dependent action

movement of each foot pedal linked directly or indirectly

3.5

independent action

movement of each foot pedal not linked

3.6

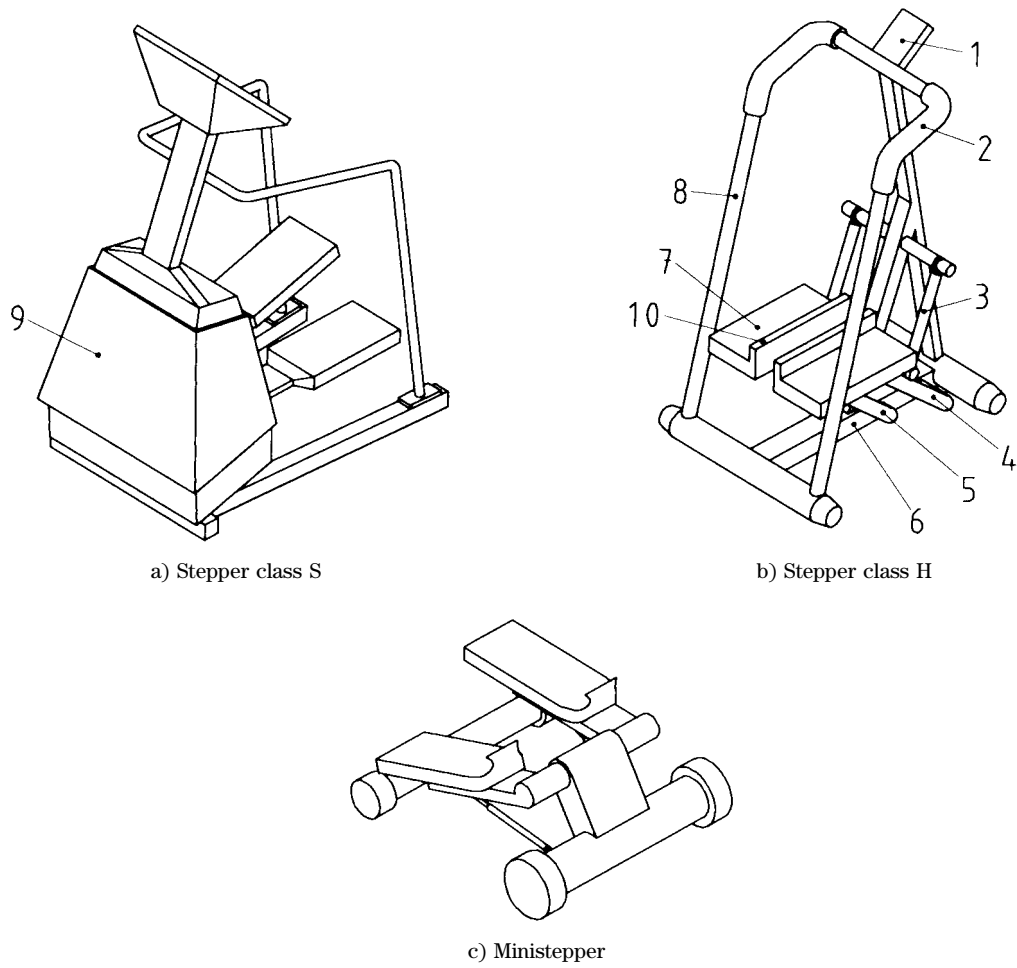
step

downward movement of either foot pedal or stair

3.7

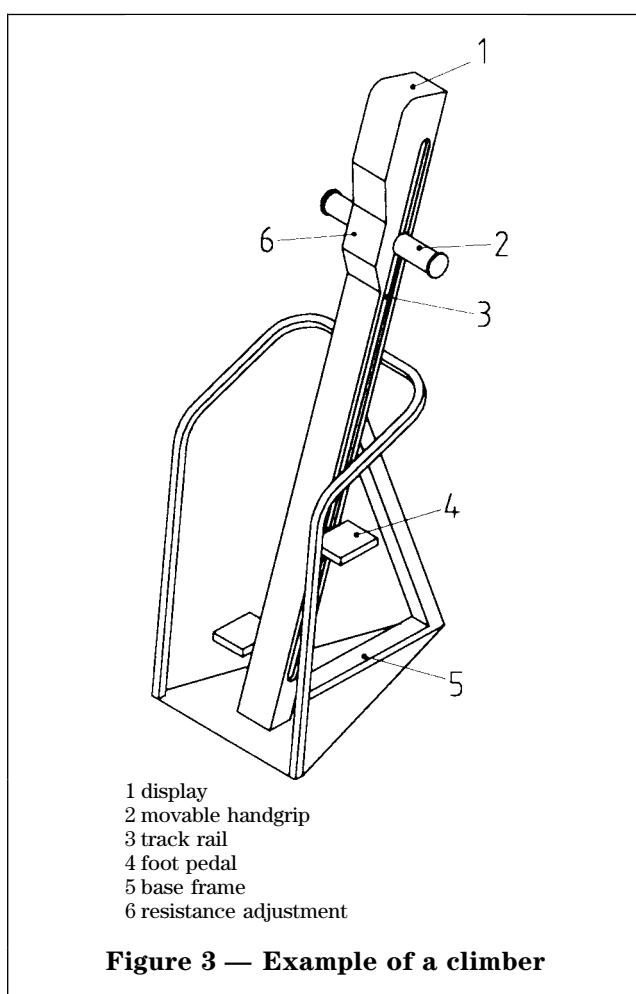
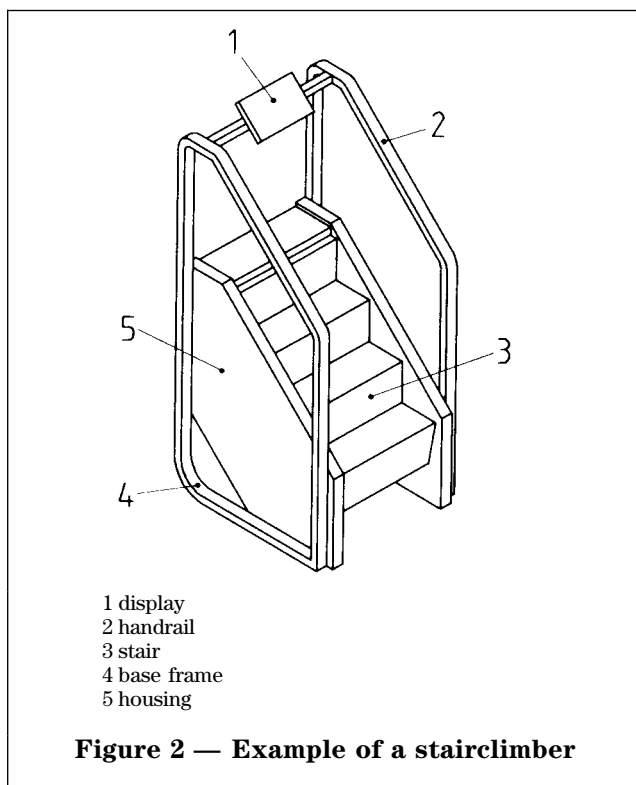
foot guard

a raised edge, see Figures 1 and 5



- | | |
|-------------------------------|----------------------|
| 1 display | 6 base frame |
| 2 hand grip | 7 foot pedal |
| 3 hydraulic piston/resistance | 8 handrail/handlebar |
| 4 lever arm | 9 housing |
| 5 pedal stabilizing arm | 10 foot guard |

Figure 1 — Examples of steppers



4 Classification

Clause 4 of EN 957-1:1996 applies.

5 Safety requirements

5.1 General

Depending on the design of the piece of equipment the requirements of 5.2 to 5.8 shall apply, as appropriate.

5.2 External construction

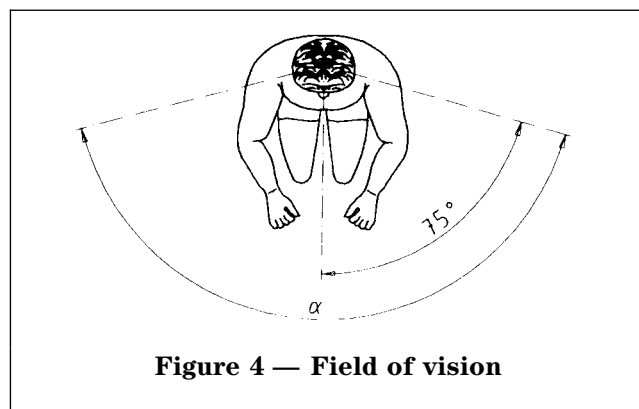
5.2.1 Squeeze, shear and reciprocating parts within the accessible area

The distance between movable parts and adjacent movable or rigid parts shall be at least 25 mm if relevant only for fingers, otherwise it shall be 60 mm.

Required stops are excluded (if the user is not put at risk).

The 25 mm and 60 mm requirements do not apply when the squeeze points remain within the user's field of vision (see Figure 4) over the full range of movement.

When the training machine is not in use the 25 mm requirement applies.



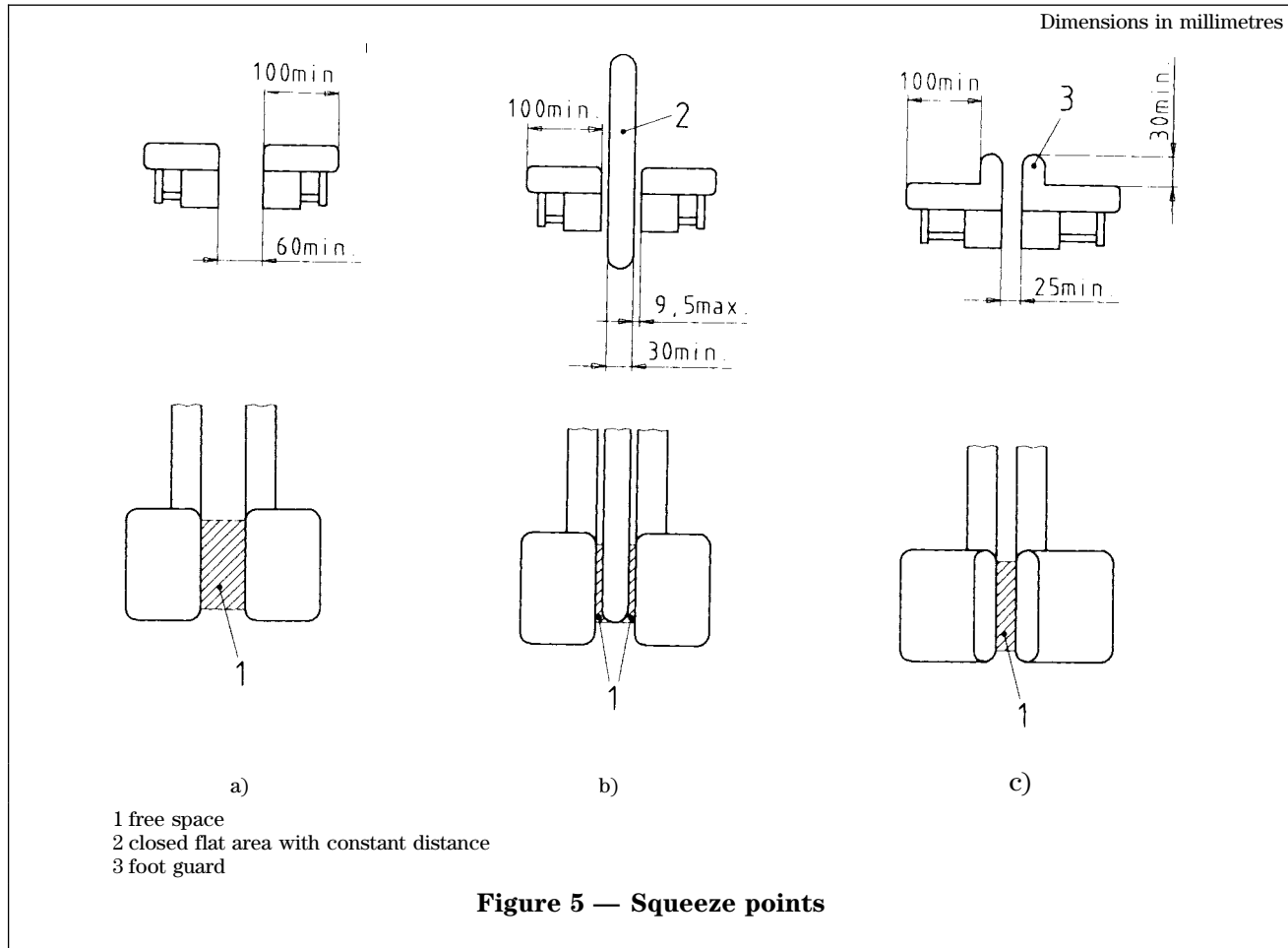
If the distance between the pedals is more than 60 mm no fence is required on the inside of the foot pedals (see Figure 5 a)).

Where the pedals are separated by a fixed part of the machine (e.g. a frame, guard or smooth cover) with a minimum width of 30 mm, there shall be a constant distance of not more than 9,5 mm and no foot guard is required on the inside of the foot pedals (see Figure 5 b)).

Where the inside edge of the foot pedals have a foot guard 30 mm high, the distance between the foot pedals can be a minimum of 25 mm (see Figure 5 c)).

In all three cases there shall be no further projections within the free space, e.g. bolts, beyond the inside edge of the pedals.

If the lever arm or foot pedal is used as an accessible stop this stop shall have a flat contact area with a minimum surface area of 800 mm² and the edges of the stop shall have a minimum radius of 2,5 mm. The maximum stop load shall not exceed the body weight.



The minimum distance between the base of the foot pedal and the floor or base frame shall be not less than 60 mm, excluding accessible stops.

Test in accordance with 6.2.

5.2.2 Transmission elements and rotating parts

All transmission elements, e.g. fans and flywheels, shall be protected so that the user's finger cannot be trapped.

Test in accordance with 6.2.

5.2.3 Temperature rise

Immediately after testing in accordance with 6.3, accessible parts of the equipment shall not exceed a temperature greater than 65 °C.

5.3 Intrinsic loading

5.3.1 Each piece of equipment of class H loaded with the user's body mass shall withstand 2,5 times the body mass (100 kg) without breakage.

Test in accordance with 6.4.

5.3.2 Each piece of equipment of class S loaded with the user's body mass shall withstand two times the body mass (100 kg).

When tested according to 6.4, supports (e.g. load-bearing surfaces) shall not be deformed by more than $f = 1/100$, cantilever supports (cantilever surfaces) by more than $f = 1/150$ and other dimensions by more than 1 %.

The training equipment shall not break when a static load of four times the body mass is applied.

A body mass of 100 kg is taken as the nominal load.

After the test:

- supports (e.g. load-bearing surfaces) shall not be deformed by more than $f = 1/100$;
- cantilever supports (cantilever surfaces) by more than $f = 1/150$;
- other dimensions by more than 1/100.

5.4 Handrails/handlebars

If equipped with handrails or handlebars, these shall show no permanent deformation of more than 3 % when tested in accordance with 6.5.

All accessible edges shall be rounded with a radius of not less than 2,5 mm.

Test in accordance with 6.5.

5.5 Foot pedals and stairs

All accessible edges of foot pedals and stairs shall be rounded with a radius of not less than 2,5 mm.

When tested in accordance with ISO 5904, the friction factor of the pedal/stair surface shall be more than 0,5.

The minimum width of the foot pedals and stairs excluding the foot guards shall be 100 mm.

5.6 Endurance test

When tested in accordance with 6.6, the training equipment shall withstand:

- 12 000 cycles for class H; and
- 100 000 cycles for class S.

After the test the training equipment shall be capable of functioning in accordance with the manufacturer's instructions for the correct use and shall not show any signs of damage, e.g. oil leakage.

5.7 Free wheel

In the case of air fan or flywheel assisted steppers, the transmission assembly should be of a free wheel type.

Test in accordance with 6.1.2 and 6.1.4.

5.8 Additional requirement for class A

The variation of the indicated or determined power P from the power input shall not exceed ± 5 W up to 50 W and ± 10 % over 50 W.

6 Test methods

6.1 General

6.1.1 Dimensional check.

6.1.2 Visual examination.

6.1.3 Tactile examination.

6.1.4 Performance test.

6.2 Testing of squeeze, shear and reciprocation points and of transmission elements and rotating parts

Apparatus:

- test finger probe B in accordance with EN 71-1 for class H; and
- test finger in accordance with 6.5 of EN 957-1:1996 for class S.

Approach the test fingers from all sides to all moving parts.

Determine whether the finger is trapped.

6.3 Testing of temperature rise

Apparatus: contact thermometer with an accuracy of ± 1 °C.

Carry out these tests using (100 ± 5) kg test subjects. Operate the training equipment at 60 steps/min ± 10 % for 20 min.

The step height shall be (180 ± 5) mm when measured at the centre of the foot pedal or the maximum possible step height of the equipment if this is not achievable.

The resistance shall be set at the maximum resistance or reduced until 60 steps/min can be maintained without a pause between steps. Note whether the temperature has exceeded 65 °C.

For speed-dependent training machines carry out the test using a 100 kg load and a paddling speed producing a mechanical power of $180 \text{ W} \pm 10 \%$.

6.4 Testing of intrinsic loading

Set the resistance to a condition which subjects the machine to a maximum stress.

Apply the required test load F for classes H or S without shock for 5 min in the stop position to one pedal over a surface area of $90 \text{ mm} \times 90 \text{ mm}$.

Remove the applied load and measure the deformation.

Repeat for the other pedal.

When more than one function is tested, which involves the use of common components, e.g. ropes, pulleys, these can be replaced before each separate test.

In order to test the whole drive system, e.g. linkages and frame, place the foot pedal at the mid-point of its range of movement and lock it at the fixing point of the resistance mechanism furthest away from the foot pedal (e.g. for a dependent stepper lock the other pedal).

Apply the load F without shock in the most onerous position over a surface area of $90 \text{ mm} \times 90 \text{ mm}$ of the foot pedal or stair so that the whole system is subjected to stress (see Figure 6).

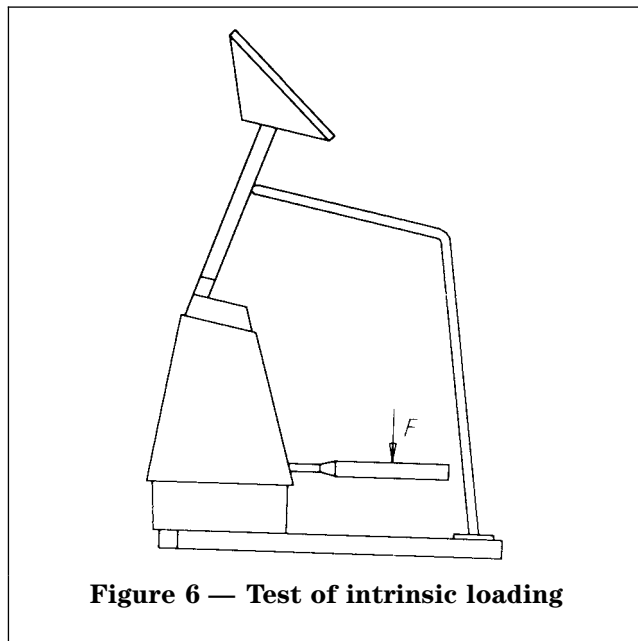


Figure 6 — Test of intrinsic loading

The base frame of the training equipment shall not be fixed to the floor during the test unless instructed otherwise in the instructions for use.

6.5 Testing of handrails/handlebars

Apply a force of 1 000 N vertically in the most onerous position of the handrail or handlebar by means of a belt with a width of (80 ± 5) mm for a period of 5 min.

Next, apply a force of 500 N horizontally using the belt in the same position as in the vertical test but in the most onerous horizontal direction of the handrails or handlebar for a period of 5 min.

Determine the permanent deformation.

6.6 Endurance testing

For speed-independent steppers carry out the test at 60 steps/min $\pm 10\%$ with a step height of 180 mm in the centre of the pedal movement or the maximum possible step height of the equipment if this is not achievable, using a body mass of 100 kg for each foot pedal or stair.

For speed-dependent steppers carry out the test with a step height of (180 ± 5) mm in the centre of the pedal movement or the maximum step height if this is not achievable at a step speed which produces an average of 180 W mechanical power $\pm 10\%$.

Perform the endurance test as follows:

- a) for class H, 12 000 cycles working for 15 min and rest time 15 min and continue the same pattern until complete;
- b) for class S, 100 000 cycles working for 10 h, cool down to room temperature, then continue for further 10 h and continue this method until the test is complete.

Check the training equipment is capable of being used as per the manufacturer's instructions for use.

6.7 Testing of the additional requirement for class A

Compare the mechanical power input to the power display.

Determine the mechanical power input by calculating the input force over distance (range of movement) and time.

The displayed value shall be within $\pm 10\%$ of this measured value in watts using the test parameters of the manufacturer, see clause 7c).

The power input shall be the average of a 10 min test period.

The test apparatus for measuring force, distance and time shall be accurate to $\pm 1\%$ for each of the three variables.

7 Additional instructions for use

In addition to EN 957-1, easy-to-understand instructions for use shall be supplied with each stepper, stairclimber and climber.

The instructions for use shall include information on at least the following points, depending on the class:

- a) information on the braking system (speed-dependent/speed-independent);
- b) information on the stepping action (dependent or independent);
- c) for class A, the testing parameters, including the training speed, resistance setting and range of movement used in the test.

BSI — British Standards Institution

BSI is the independent national body responsible for preparing British Standards. It presents the UK view on standards in Europe and at the international level. It is incorporated by Royal Charter.

Revisions

British Standards are updated by amendment or revision. Users of British Standards should make sure that they possess the latest amendments or editions.

It is the constant aim of BSI to improve the quality of our products and services. We would be grateful if anyone finding an inaccuracy or ambiguity while using this British Standard would inform the Secretary of the technical committee responsible, the identity of which can be found on the inside front cover. Tel: 020 8996 9000. Fax: 020 8996 7400.

BSI offers members an individual updating service called PLUS which ensures that subscribers automatically receive the latest editions of standards.

Buying standards

Orders for all BSI, international and foreign standards publications should be addressed to Customer Services. Tel: 020 8996 9001. Fax: 020 8996 7001.

In response to orders for international standards, it is BSI policy to supply the BSI implementation of those that have been published as British Standards, unless otherwise requested.

Information on standards

BSI provides a wide range of information on national, European and international standards through its Library and its Technical Help to Exporters Service. Various BSI electronic information services are also available which give details on all its products and services. Contact the Information Centre. Tel: 020 8996 7111. Fax: 020 8996 7048.

Subscribing members of BSI are kept up to date with standards developments and receive substantial discounts on the purchase price of standards. For details of these and other benefits contact Membership Administration. Tel: 020 8996 7002. Fax: 020 8996 7001.

Copyright

Copyright subsists in all BSI publications. BSI also holds the copyright, in the UK, of the publications of the international standardization bodies. Except as permitted under the Copyright, Designs and Patents Act 1988 no extract may be reproduced, stored in a retrieval system or transmitted in any form or by any means – electronic, photocopying, recording or otherwise – without prior written permission from BSI.

This does not preclude the free use, in the course of implementing the standard, of necessary details such as symbols, and size, type or grade designations. If these details are to be used for any other purpose than implementation then the prior written permission of BSI must be obtained.

If permission is granted, the terms may include royalty payments or a licensing agreement. Details and advice can be obtained from the Copyright Manager. Tel: 020 8996 7070.