

BS EN 754-8:2016



BSI Standards Publication

Aluminium and aluminium alloys — Cold drawn rod/bar and tube

Part 8: Porthole tubes, tolerances on dimensions and form

National foreword

This British Standard is the UK implementation of EN 754-8:2016. It supersedes BS EN 754-8:2008 which is withdrawn.

The UK participation in its preparation was entrusted to Technical Committee NFE/35, Light metals and their alloys.

A list of organizations represented on this committee can be obtained on request to its secretary.

This publication does not purport to include all the necessary provisions of a contract. Users are responsible for its correct application.

© The British Standards Institution 2016. Published by BSI Standards Limited 2016

ISBN 978 0 580 91007 4

ICS 77.150.10

Compliance with a British Standard cannot confer immunity from legal obligations.

This British Standard was published under the authority of the Standards Policy and Strategy Committee on 30 June 2016.

Amendments issued since publication

Date	Text affected
------	---------------

EUROPEAN STANDARD

EN 754-8

NORME EUROPÉENNE

EUROPÄISCHE NORM

June 2016

ICS 77.150.10

Supersedes EN 754-8:2008

English Version

Aluminium and aluminium alloys - Cold drawn rod/bar and tube - Part 8: Porthole tubes, tolerances on dimensions and form

Aluminium et alliages d'aluminium - Barres et tubes
étirés - Partie 8 : Tubes filés à pont, tolérances sur
dimensions et forme

Aluminium und Aluminiumlegierungen - Gezogene
Stangen und Rohre - Teil 8: Mit Kammerwerkzeug
Stranggepresste Rohre, Grenzabmaße und
Formtoleranzen

This European Standard was approved by CEN on 11 April 2016.

CEN members are bound to comply with the CEN/CENELEC Internal Regulations which stipulate the conditions for giving this European Standard the status of a national standard without any alteration. Up-to-date lists and bibliographical references concerning such national standards may be obtained on application to the CEN-CENELEC Management Centre or to any CEN member.

This European Standard exists in three official versions (English, French, German). A version in any other language made by translation under the responsibility of a CEN member into its own language and notified to the CEN-CENELEC Management Centre has the same status as the official versions.

CEN members are the national standards bodies of Austria, Belgium, Bulgaria, Croatia, Cyprus, Czech Republic, Denmark, Estonia, Finland, Former Yugoslav Republic of Macedonia, France, Germany, Greece, Hungary, Iceland, Ireland, Italy, Latvia, Lithuania, Luxembourg, Malta, Netherlands, Norway, Poland, Portugal, Romania, Slovakia, Slovenia, Spain, Sweden, Switzerland, Turkey and United Kingdom.



EUROPEAN COMMITTEE FOR STANDARDIZATION
COMITÉ EUROPÉEN DE NORMALISATION
EUROPÄISCHES KOMITEE FÜR NORMUNG

CEN-CENELEC Management Centre: Avenue Marnix 17, B-1000 Brussels

Contents	Page
European foreword	3
1 Scope	4
2 Normative references	5
3 Tolerances on dimensions	5
3.1 General.....	5
3.2 Diameter - Round tube.....	5
3.3 Width, depth or width across flats - squares, rectangles, hexagons, octagons.....	6
3.4 Wall thickness variation (eccentricity).....	7
3.5 Length.....	8
3.6 Squareness of cut ends.....	9
4 Tolerances on form	9
4.1 General.....	9
4.2 Straightness.....	9
4.3 Convexity-Concavity.....	10
4.4 Twist.....	11
4.5 Angularity.....	12
4.6 Corner and fillet radii.....	13
4.7 Depth of dents for round tubes.....	13
Annex A (informative) Wall thickness variation (eccentricity)	15
A.1 General.....	15
A.2 Specifying round tube sizes and tolerances.....	15
Bibliography	17

European foreword

This document (EN 754-8:2016) has been prepared by Technical Committee CEN/TC 132 “Aluminium and aluminium alloys”, the secretariat of which is held by AFNOR.

This European Standard shall be given the status of a national standard, either by publication of an identical text or by endorsement, at the latest by December 2016, and conflicting national standards shall be withdrawn at the latest by December 2016.

Attention is drawn to the possibility that some of the elements of this document may be the subject of patent rights. CEN [and/or CENELEC] shall not be held responsible for identifying any or all such patent rights.

This document supersedes EN 754-8:2008.

The following technical modifications have been introduced during the revision:

- Subclause 3.2 Diameter - Round tube.

EN 754 comprises the following parts under the general title *Aluminium and aluminium alloys — Cold drawn rod/bar and tube*:

- *Part 1: Technical conditions for inspection and delivery;*
- *Part 2: Mechanical properties;*
- *Part 3: Round bars, tolerances on dimensions and form;*
- *Part 4: Square bars, tolerances on dimensions and form;*
- *Part 5: Rectangular bars, tolerances on dimensions and form;*
- *Part 6: Hexagonal bars, tolerances on dimensions and form;*
- *Part 7: Seamless tubes, tolerances on dimensions and form;*
- *Part 8: Porthole tubes, tolerances on dimensions and form.*

According to the CEN/CENELEC Internal Regulations, the national standards organizations of the following countries are bound to implement this European Standard: Austria, Belgium, Bulgaria, Croatia, Cyprus, Czech Republic, Denmark, Estonia, Finland, Former Yugoslav Republic of Macedonia, France, Germany, Greece, Hungary, Iceland, Ireland, Italy, Latvia, Lithuania, Luxembourg, Malta, Netherlands, Norway, Poland, Portugal, Romania, Slovakia, Slovenia, Spain, Sweden, Switzerland, Turkey and the United Kingdom.

1 Scope

This European Standard specifies the tolerances on dimensions and form for aluminium and aluminium alloy cold drawn porthole tubes with an outside diameter (*OD*) from 3 mm to 350 mm (round tube, see Figure 1) or with a cross section contained within a circumscribing circle (*CD*) from 8 mm to 300 mm (other than round tube, see Figure 2), supplied in straight lengths.

This document only applies to cold drawn tube for general engineering applications made in the following alloys:

- EN AW-1050A, EN AW-1200;
- EN AW-3003, EN AW-3103;
- EN AW-5005, EN AW-5005A, EN AW-5049, EN AW-5251, EN AW-5052;
- EN AW-6012, EN AW-6060, EN AW-6061, EN AW-6262, EN AW-6262A;
- EN AW-6063, EN AW-6063A, EN AW-6065, EN AW-6082;
- EN AW-7020.

The temper designations used in this part are according to EN 515.

This document only applies to tube produced by the porthole/bridge method of extrusion only (and then cold drawn to the final dimensions).

This document does not apply to:

- cold drawn tubes produced by the seamless, die/mandrel method (EN 754-7),
- tubes delivered in coils (EN 13958),
- coiled tubes cut to length (EN 13958).

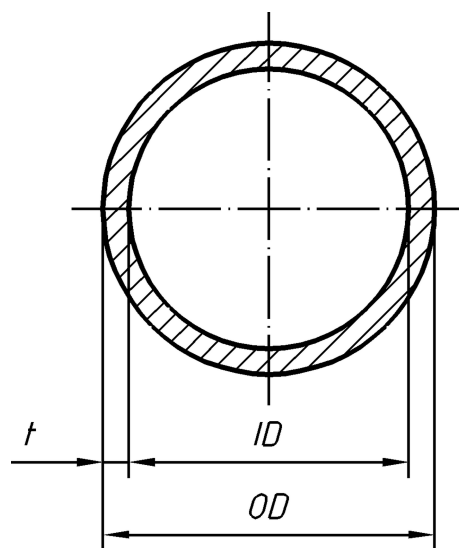


Figure 1 — Round tube

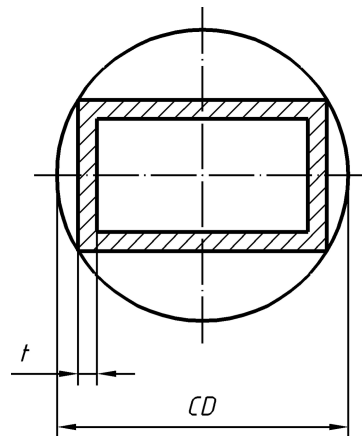


Figure 2 — Circumscribing circle for other than round tube

2 Normative references

The following documents, in whole or in part, are normatively referenced in this document and are indispensable for its application. For dated references, only the edition cited applies. For undated references, the latest edition of the referenced document (including any amendments) applies.

EN 754-1:2016, *Aluminium and aluminium alloys — Cold drawn rod/bar and tube — Part 1: Technical conditions for inspection and delivery*

3 Tolerances on dimensions

3.1 General

When outside diameter OD , inside diameter ID , and wall thickness t , (or their equivalent dimensions in other than round tube) are all specified, standard tolerances shall apply to any two of these dimensions, but not to all three. As a result, the purchaser shall only state two nominal dimensions on any given order.

3.2 Diameter - Round tube

Mean diameter is defined as the average of two diameter measurements taken at right angles to each other at any position along the length.

The maximum allowable deviation at any point from the specified diameter is the maximum difference measured at any point along the length of the tube, i.e. it is inclusive of any ovality in the cross section.

The tolerances on diameter are specified in Table 1.

As detailed in EN 754-1:2016, Clause 4, if the original order does not make clear the nature of the diameter tolerances required, the supplier shall interpret them as inclusive of any ovality (i.e. maximum allowable deviation at any point from the specified diameter in Table 1). However, the diameter tolerances may be expressed as both mean and inclusive of ovality if this is specifically requested by the purchaser.

Table 1 — Tolerances on diameter for round tube

Dimensions in millimetres

Diameter (<i>OD</i> or <i>ID</i>)		Tolerance on diameter			
		Maximum allowable deviation of mean diameter from specified diameter ^e	Maximum allowable deviation of diameter at any point from specified diameter ^a		
Over	Up to and including		Non-annealed and non heat treated tube ^b	Heat treated tube ^c	Tempers O, H111 and Tx510
≥ 3	8	±0,04 ^d	±0,08 ^d	±0,12 ^d	±0,25 ^d
8	18	±0,05	±0,09	±0,15	±0,30
18	30	±0,06	±0,10	±0,20	±0,40
30	50	±0,07	±0,12	±0,25	±0,50
50	80	±0,09	±0,15	±0,35	±0,70
80	120	±0,14	±0,20	±0,60	±1,2
120	200	±0,25	±0,40	±1,2	±2,4
200	350	±0,38	±0,60	±1,7	±3,4

^a Not applicable to tubes having a wall thickness less than 2,5 % of the specified outside diameter. The tolerance for tubes with wall thickness less than 2,5 % of the specified outside diameter shall be determined by multiplying the applicable tolerance as follows:
— wall thickness over 2,0 % up to and including 2,5 % of outside diameter: 1,5 × tolerance;
— wall thickness over 1,5 % up to and including 2,0 % of outside diameter: 2,0 × tolerance;
— wall thickness over 1,0 % up to and including 1,5 % of outside diameter: 3,0 × tolerance;
— wall thickness over 0,5 % up to and including 1,0 % of outside diameter: 4,0 × tolerance.

^b Applies to all alloys in H1x, H2x, H3x tempers, and to alloy EN AW-6063 in the T832 temper.

^c Applies to all alloys in T3, T4, T6, T66, T73, T8, T9 and Tx511 tempers.

^d This tolerance applies for outside diameter only, i.e. tube in this size range can only be specified as “Outside Diameter x Wall Thickness”.

^e Shall not apply to Tx510 or Tx511 tempers.

3.3 Width, depth or width across flats - squares, rectangles, hexagons, octagons

The tolerances on width, depth or width across flats are specified in Table 2.

Table 2 — Tolerances on width, depth or width across flats

Dimensions in millimetres

Width, depth or width across flats		Maximum allowable deviation of width, depth or width across flats at any point from the specified value ^a		
Over	Up to and including	Non-annealed and non heat treated tube ^b	Heat treated tube ^c	Annealed tube ^d
≥ 8	18	±0,20	±0,30	±0,60
18	30	±0,25	±0,40	±0,80
30	50	±0,35	±0,50	±1,0
50	80	±0,50	±0,70	±1,4
80	120	±0,70	±1,0	±2,0
120	200	±1,0	±1,5	±3,0

^a Not applicable to tubes having a wall thickness less than 2,5 % of the specified outside width, depth or width across flats. The tolerance for tubes with wall thickness less than 2,5 % of the specified width, depth or width across flats shall be determined by multiplying the applicable tolerance as follows:
— wall thickness over 2,0 % up to and including 2,5 % of outside parameter: 1,5 × tolerance;
— wall thickness over 1,5 % up to and including 2,0 % of outside parameter: 2,0 × tolerance;
— wall thickness over 1,0 % up to and including 1,5 % of outside parameter: 3,0 × tolerance;
— wall thickness over 0,5 % up to and including 1,0 % of outside parameter: 4,0 × tolerance.

^b Applies to all alloys in F, H1x, H2x, H3x tempers.

^c Applies to all alloys in T3, T4, T6, T66, T73, T8, T9 and Tx511 tempers.

^d Applies to all alloys in O, H111 and Tx510 tempers.

3.4 Wall thickness variation (eccentricity)

The tolerances on wall thickness variation (eccentricity) for round tubes are specified in Table 3. For other than round tubes the wall thickness variation tolerances shall be agreed between supplier and purchaser.

Table 3 — Tolerances on wall thickness variation (eccentricity) for round tubes

Nominal wall thickness t mm		Tolerance on wall thickness variation (eccentricity) %		
Over	Up to and including	For $OD < 150$	For $OD \geq 150$ and < 300	For $OD \geq 300$
0,5	3	± 7	± 9	± 11
3	5	± 6	± 8	± 10
5	-	± 5	± 7	± 9

Round tube dimensions can be expressed in three different ways, i.e. outside diameter (OD) \times wall thickness (t), inside diameter (ID) $\times t$ (where t is the nominal wall thickness) and $OD \times ID$. Depending of the way of ordering the tube the values in Table 3 should be understood as follows (see Annex A for further explanation):

- for tubes specified as $OD \times t$ or $ID \times t$ the values are allowable variation at any point;
- for tubes specified as $OD \times ID$ the above values are allowable variation from the calculated mean wall thickness.

3.5 Length

If fixed lengths are to be supplied, this shall be stated in the order document. The tolerances on fixed length are specified in Table 4.

Table 4 — Tolerances on fixed length

Dimensions in millimetres

Outside diameter or diameter of the circumscribing circle		Tolerances on fixed length				
Over	Up to and including	$L \leq 2\ 000$	$2\ 000 < L \leq 5\ 000$	$5\ 000 < L \leq 10\ 000$	$10\ 000 < L \leq 15\ 000$	$15\ 000 < L \leq 20\ 000$
	100	+5 0	+7 0	+10 0	+16 0	+22 0
100	200	+7 0	+9 0	+12 0	+18 0	+24 0
200	350	+8 0	+11 0	+14 0	+20 0	+28 0

If no fixed length is specified in the order document, porthole tubes may be delivered in random lengths. The length range and the tolerances on the random length shall be subject to agreement between supplier and purchaser.

3.6 Squareness of cut ends

The squareness of cut ends shall be within half of the fixed-length tolerance range specified in Table 4 for both fixed and random lengths, (e.g. for a fixed-length tolerance of $^{+10}_0$ mm the squareness of cut ends shall be within 5 mm).

4 Tolerances on form

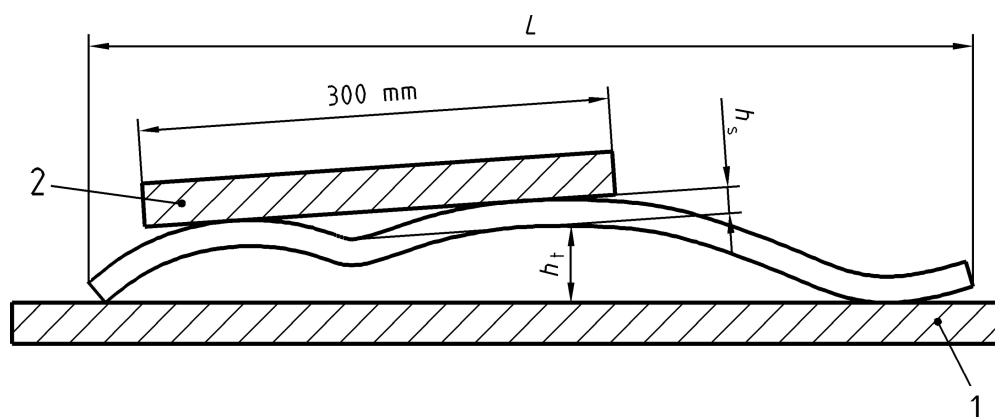
4.1 General

Tolerances on form for O and Tx510 tempers shall be subject to agreement between supplier and purchaser.

4.2 Straightness

Deviations from straightness, h_s and h_t , shall be measured as shown in Figure 3 with the tube placed on a horizontal base plate so that its mass decreases the deviation.

The straightness tolerances are specified in Table 5. (The straightness tolerance h_t applies to the whole length, e.g. for a length of 6 m the maximum deviation from straightness h_t is the value given in the table multiplied by 6 m.)



Key

- 1 base plate
- 2 straight edge

Figure 3 — Measurement of the deviation from straightness

Table 5 — Straightness tolerances

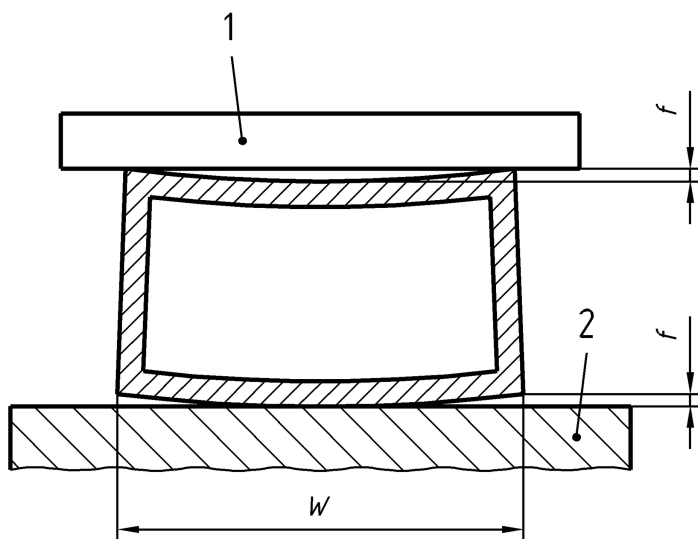
Dimensions in millimetres

Outside diameter or diameter of circumscribing circle		Maximum deviation from straightness per metre length $h_i/length$ mm/m	Maximum localized kink in any 300 mm portion h_s
Over	Up to and including		
≥ 8	100	1,0	0,5
100	150	1,5	0,8
150	250	2,0	1,0
250	350	3,5	1,5

Straightness tolerance for tubes having a wall thickness less than 1,5 % the specified outside diameter shall be subject to agreement between supplier and purchaser.

4.3 Convexity-Concavity

The convexity-concavity shall be measured as shown in Figure 4. The convexity-concavity tolerances are specified in Table 6.



Key

- 1 straight edge
- 2 base plate

Figure 4 — Measurement of convexity - concavity

Table 6 — Convexity - concavity tolerances

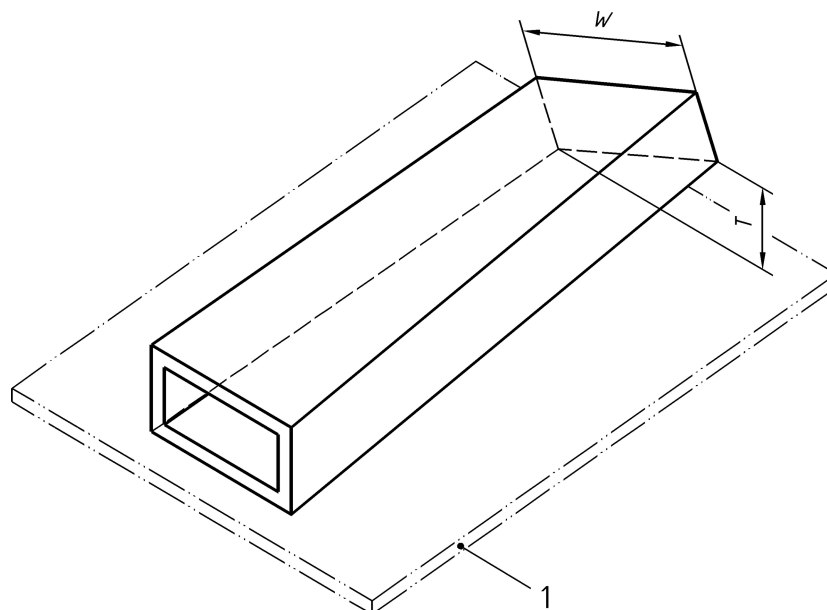
Dimensions in millimetres

Width W		Maximum allowable deviation f	
Over	Up to and including	Wall thickness ≤ 5	Wall thickness > 5
-	30	0,30	0,20
30	60	0,40	0,30
60	100	0,60	0,40
100	150	0,90	0,60
150	200	1,2	0,80

4.4 Twist

Twist T shall be measured as shown in Figure 5 by placing the tube on a flat base plate, the tube resting under its own mass and measuring the maximum distance at any point along the length between the bottom surface of the tube and the base plate surface.

Twist tolerances are specified in Table 7 as a function of the width W and the length L of the tube.



Key

1 base plate

Figure 5 — Measurement of twist

Table 7 — Twist tolerances

Dimensions in millimetres

Width W		Twist tolerance T		
		Per 1 000 mm of length ^a	On total tube length L	
Over	Up to and including		Up to and including 6 000 mm	Over 6 000 mm
-	30	1,2	2,5	3,0
30	50	1,5	3,0	4,0
50	100	2,0	3,5	5,0
100	200	2,5	5,0	7,0

^a Twist tolerances for lengths less than 1 000 mm shall be subject to agreement between supplier and purchaser.

4.5 Angularity

The deviation from square of square and rectangular tubes shall be measured as shown in Figure 6. The maximum allowable deviation from square is specified in Table 8 as a function of tube depth B . In the case of rectangular tubes, the tolerance on squareness shall apply to the shorter side of the tube.

The maximum allowable deviation in an angle other than a right angle (hexagonal tubes, octagonal tubes) shall be included within the width across flats tolerances, see Table 2.

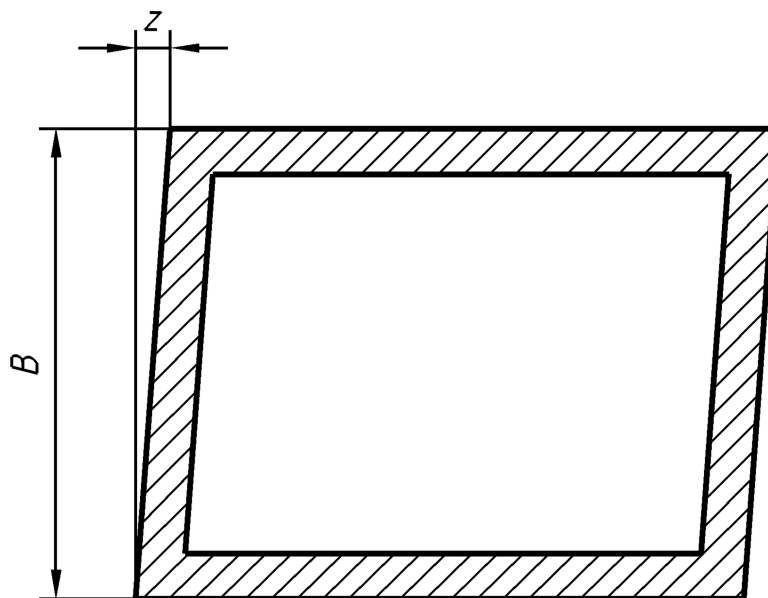


Figure 6 — Measurement of deviation from square

Table 8 — Squareness tolerances for square and rectangular tube

Dimensions in millimetres

Depth <i>B</i>		Maximum allowable deviation <i>Z</i> From right angle
Over	Up to and including	
-	30	0,4
30	50	0,7
50	80	1,0
80	120	1,4
120	200	2,0

4.6 Corner and fillet radii

Sharp corners and fillet radii may be slightly rounded unless otherwise indicated on the drawing. If corner and fillet radii are to be specified, these shall be subject to agreement between supplier and purchaser together with relevant tolerances.

4.7 Depth of dents for round tubes

The tolerances for depth of dents for round tubes are specified in Table 9. The tolerances for other than round tube shall be subject to agreement between supplier and purchaser.

Table 9 — Depth of dents tolerances for round tube

Dimensions in millimetres

Outside or Inside Diameter		Tolerance on depth of dent ^a		
Over	Up to and including	Non-annealed and non heat treated tube ^b	Heat treated tube ^c	Annealed tube ^d
3	8	0,08	0,12	0,25
8	18	0,09	0,15	0,30
18	30	0,10	0,20	0,40
30	50	0,12	0,25	0,50
50	80	0,15	0,35	0,70
80	120	0,20	0,60	1,20
120	200	0,40	1,20	2,40
200	350	0,60	1,70	3,40

^a Depth of dents shall not exceed the tolerances specified in Table 9 at any point from the specified diameter, with the following exception: for tube having a wall thickness less than 2,5 % of the outside diameter, the following multipliers to the above tolerances shall apply:
— wall thickness over 1,5 % up to and including 2,5 % of outside diameter: 1,25 × tolerance;
— wall thickness over 0,5 % up to and including 1,5 % of outside diameter: 1,5 × tolerance.

^b Applies to all alloys in F, H1x, H2x, H3x tempers and to alloy EN AW-6063 in the T832 temper.

^c Applies to all alloys in T3, T4, T6, T66, T73, T8, T9 and Tx511 tempers.

^d Applies to all alloys in O, H111 and Tx510 tempers.

Annex A (informative)

Wall thickness variation (eccentricity)

A.1 General

Wall thickness variation tolerances for round tube can be the source of a lot of confusion. In particular as to whether quoted values are based on the nominal or mean wall thickness. This present section is included in the standard to provide some guidelines as to when each of these possibilities is more appropriate.

A.2 Specifying round tube sizes and tolerances

A.2.1 General

It is evident that round tube dimensions can be expressed in three different ways, i.e. outside diameter (OD) \times wall thickness (t), inside diameter (ID) \times t (where t is the nominal wall thickness) and $OD \times ID$. Since all three dimensions interact in any given size tube, it is only possible to apply tolerances to any two of the parameters depending on which are the most important for the application of the tube in question. The choice of the dimensional parameters has a very significant effect on how the wall thickness variation is expressed.

The method of measuring wall thickness (t) is the same whether the given tube is specified as $OD \times t$, $ID \times t$ or $OD \times ID$ and is shown in Figure A.1. The tube wall thickness is measured around the circumference of the tube and the maximum (t_{\max}) and minimum (t_{\min}) values established.

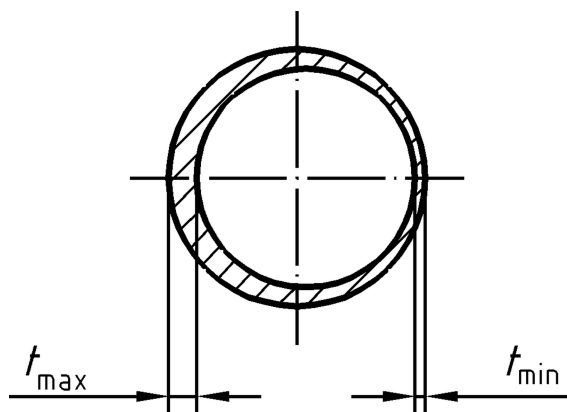


Figure A.1 — Minimum and maximum values of the tube wall thickness

A.2.2 Wall thickness variation for tubes specified as $OD \times t$ or $ID \times t$

For tube that is specified as either $OD \times t$ or $ID \times t$, the nominal wall thickness t can be used as the basis for calculating and expressing the wall thickness variation tolerance. The tolerance can be expressed as the difference (in millimetres) between the maximum and minimum values permissible for the tube, i.e. at any point, maximum wall thickness variation, deviation or concentricity:

$$t_{\max} - t_{\min} \text{ in mm} \quad (\text{A.1})$$

Alternatively, the difference can be expressed as a percentage of the nominal wall thickness which is normally divided by two to give a plus and minus tolerance. This percentage is normally expressed on a \pm basis as follows:

$$\frac{t_{\max} - t_{\min}}{2t} \times 100 \% \quad (\text{A.2})$$

A.2.3 Wall thickness variation for tubes specified as *OD* \times *ID*

In the case of tubes specified as *OD* \times *ID*, there is no nominal wall thickness available to allow the same method of wall thickness variation calculation as that described in A.2.2. As a result, it is necessary to use the measured t_{\max} and t_{\min} values to give a wall thickness difference which is then used to calculate a percentage of the mean wall thickness.

$$\frac{t_{\max} - t_{\min}}{(t_{\max} + t_{\min}) / 2} \times 100 \% \quad (\text{A.3})$$

This value may then be divided by two to give a plus/ minus value for the tolerance.

Bibliography

- [1] EN 515, *Aluminium and aluminium alloys — Wrought products — Temper designations*
- [2] EN 754-7, *Aluminium and aluminium alloys — Cold drawn rod/bar and tube — Part 7: Seamless tubes, tolerances on dimensions and form*
- [3] EN 13958, *Aluminium and aluminium alloys — Cold drawn, round, coiled tube for general applications — Specification*

British Standards Institution (BSI)

BSI is the national body responsible for preparing British Standards and other standards-related publications, information and services.

BSI is incorporated by Royal Charter. British Standards and other standardization products are published by BSI Standards Limited.

About us

We bring together business, industry, government, consumers, innovators and others to shape their combined experience and expertise into standards-based solutions.

The knowledge embodied in our standards has been carefully assembled in a dependable format and refined through our open consultation process. Organizations of all sizes and across all sectors choose standards to help them achieve their goals.

Information on standards

We can provide you with the knowledge that your organization needs to succeed. Find out more about British Standards by visiting our website at bsigroup.com/standards or contacting our Customer Services team or Knowledge Centre.

Buying standards

You can buy and download PDF versions of BSI publications, including British and adopted European and international standards, through our website at bsigroup.com/shop, where hard copies can also be purchased.

If you need international and foreign standards from other Standards Development Organizations, hard copies can be ordered from our Customer Services team.

Copyright in BSI publications

All the content in BSI publications, including British Standards, is the property of and copyrighted by BSI or some person or entity that owns copyright in the information used (such as the international standardization bodies) and has formally licensed such information to BSI for commercial publication and use.

Save for the provisions below, you may not transfer, share or disseminate any portion of the standard to any other person. You may not adapt, distribute, commercially exploit, or publicly display the standard or any portion thereof in any manner whatsoever without BSI's prior written consent.

Storing and using standards

Standards purchased in soft copy format:

- A British Standard purchased in soft copy format is licensed to a sole named user for personal or internal company use only.
- The standard may be stored on more than 1 device provided that it is accessible by the sole named user only and that only 1 copy is accessed at any one time.
- A single paper copy may be printed for personal or internal company use only.

Standards purchased in hard copy format:

- A British Standard purchased in hard copy format is for personal or internal company use only.
- It may not be further reproduced – in any format – to create an additional copy. This includes scanning of the document.

If you need more than 1 copy of the document, or if you wish to share the document on an internal network, you can save money by choosing a subscription product (see 'Subscriptions').

Reproducing extracts

For permission to reproduce content from BSI publications contact the BSI Copyright & Licensing team.

Subscriptions

Our range of subscription services are designed to make using standards easier for you. For further information on our subscription products go to bsigroup.com/subscriptions.

With **British Standards Online (BSOL)** you'll have instant access to over 55,000 British and adopted European and international standards from your desktop. It's available 24/7 and is refreshed daily so you'll always be up to date.

You can keep in touch with standards developments and receive substantial discounts on the purchase price of standards, both in single copy and subscription format, by becoming a **BSI Subscribing Member**.

PLUS is an updating service exclusive to BSI Subscribing Members. You will automatically receive the latest hard copy of your standards when they're revised or replaced.

To find out more about becoming a BSI Subscribing Member and the benefits of membership, please visit bsigroup.com/shop.

With a **Multi-User Network Licence (MUNL)** you are able to host standards publications on your intranet. Licences can cover as few or as many users as you wish. With updates supplied as soon as they're available, you can be sure your documentation is current. For further information, email subscriptions@bsigroup.com.

Revisions

Our British Standards and other publications are updated by amendment or revision.

We continually improve the quality of our products and services to benefit your business. If you find an inaccuracy or ambiguity within a British Standard or other BSI publication please inform the Knowledge Centre.

Useful Contacts

Customer Services

Tel: +44 345 086 9001

Email (orders): orders@bsigroup.com

Email (enquiries): cservices@bsigroup.com

Subscriptions

Tel: +44 345 086 9001

Email: subscriptions@bsigroup.com

Knowledge Centre

Tel: +44 20 8996 7004

Email: knowledgecentre@bsigroup.com

Copyright & Licensing

Tel: +44 20 8996 7070

Email: copyright@bsigroup.com

BSI Group Headquarters

389 Chiswick High Road London W4 4AL UK