

Kitchen sinks — Connecting dimensions

The European Standard EN 695:2005 has the status of a
British Standard

ICS 91.140.70; 97.040.99

National foreword

This British Standard is the official English language version of EN 695:2005. It supersedes BS EN 695:1997 which is withdrawn.

The UK participation in its preparation was entrusted to Technical Committee B/503, Sanitary appliances, which has the responsibility to:

- aid enquirers to understand the text;
- present to the responsible international/European committee any enquiries on the interpretation, or proposals for change, and keep UK interests informed;
- monitor related international and European developments and promulgate them in the UK.

A list of organizations represented on this committee can be obtained on request to its secretary.

Cross-references

The British Standards which implement international or European publications referred to in this document may be found in the *BSI Catalogue* under the section entitled “International Standards Correspondence Index”, or by using the “Search” facility of the *BSI Electronic Catalogue* or of British Standards Online.

This publication does not purport to include all the necessary provisions of a contract. Users are responsible for its correct application.

Compliance with a British Standard does not of itself confer immunity from legal obligations.

Summary of pages

This document comprises a front cover, an inside front cover, the EN title page, pages 2 to 12, an inside back cover and a back cover.

The BSI copyright notice displayed in this document indicates when the document was last issued.

This British Standard was published under the authority of the Standards Policy and Strategy Committee on 13 December 2005

© BSI 13 December 2005

ISBN 0 580 47370 8

Amendments issued since publication

Amd. No.	Date	Comments

English Version

Kitchen sinks - Connecting dimensions

Eviers de cuisine - Cotes de raccordement

Küchenspülen - Anschlussmaße

This European Standard was approved by CEN on 1 July 2005.

CEN members are bound to comply with the CEN/CENELEC Internal Regulations which stipulate the conditions for giving this European Standard the status of a national standard without any alteration. Up-to-date lists and bibliographical references concerning such national standards may be obtained on application to the Central Secretariat or to any CEN member.

This European Standard exists in three official versions (English, French, German). A version in any other language made by translation under the responsibility of a CEN member into its own language and notified to the Central Secretariat has the same status as the official versions.

CEN members are the national standards bodies of Austria, Belgium, Cyprus, Czech Republic, Denmark, Estonia, Finland, France, Germany, Greece, Hungary, Iceland, Ireland, Italy, Latvia, Lithuania, Luxembourg, Malta, Netherlands, Norway, Poland, Portugal, Slovakia, Slovenia, Spain, Sweden, Switzerland and United Kingdom.



EUROPEAN COMMITTEE FOR STANDARDIZATION
COMITÉ EUROPÉEN DE NORMALISATION
EUROPÄISCHES KOMITEE FÜR NORMUNG

Management Centre: rue de Stassart, 36 B-1050 Brussels

Contents

Foreword	3
1 Scope	4
2 Normative references	4
3 Terms and definitions	4
4 Waste outlet holes	4
5 Fitting area for tap holes	7
6 Overflow holes	9
Bibliography	12

Foreword

This European Standard (EN 695:2005) has been prepared by Technical Committee CEN/TC 163 "Sanitary appliances", the secretariat of which is held by UNI.

This European Standard shall be given the status of a national standard, either by publication of an identical text or by endorsement, at the latest by February 2006, and conflicting national standards shall be withdrawn at the latest by February 2006.

This document supersedes EN 695:1997.

According to the CEN/CENELEC Internal Regulations, the national standards organizations of the following countries are bound to implement this European Standard: Austria, Belgium, Cyprus, Czech Republic, Denmark, Estonia, Finland, France, Germany, Greece, Hungary, Iceland, Ireland, Italy, Latvia, Lithuania, Luxembourg, Malta, Netherlands, Norway, Poland, Portugal, Slovakia, Slovenia, Spain, Sweden, Switzerland and United Kingdom.

1 Scope

This European Standard specifies connecting dimensions for kitchen sinks used for domestic purposes, regardless of the material from which they are manufactured.

NOTE 1 For the purposes of this standard the term "domestic purposes" includes use in hotels, accommodation for students, hospitals and similar buildings, except when special medical provisions are required.

NOTE 2 The figures are given by way of example; other designs are possible.

This European Standard does not apply to industrial kitchen sinks.

2 Normative references

The following referenced documents are indispensable for the application of this document. For dated references, only the edition cited applies. For undated references, the latest edition of the referenced document (including any amendments) applies.

EN 13310:2003, *Kitchen sinks – Functional requirements and test methods*

3 Terms and definitions

For the purposes of this European Standard, the terms and definitions given in EN 13310:2003 and the following apply.

3.1

integral overflow

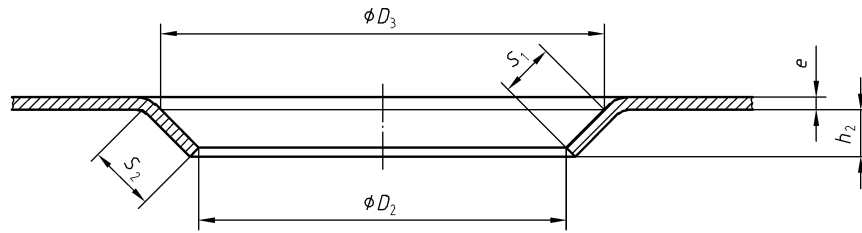
overflow arrangement which is a part of the kitchen sink formed during its manufacture

4 Waste outlet holes

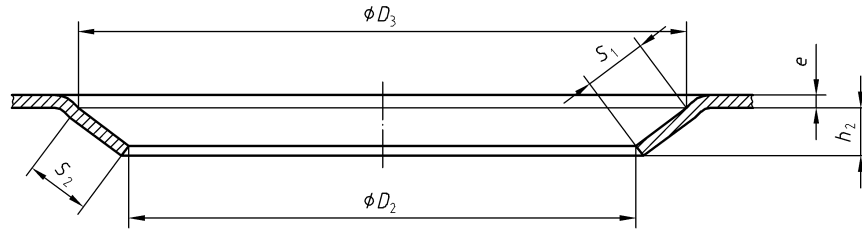
The connecting dimensions for waste outlet holes shall comply with the requirements given in Table 1 except when the waste outlets are supplied by the manufacturer together with the kitchen sink.

Table 1 — Connecting dimensions for waste outlet holes (see Figures 1 and 2)

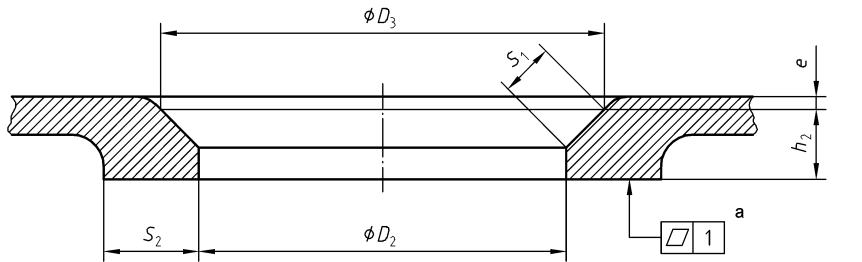
Designation	Symbol	Value mm	Reference diameter D_3^a mm	Remarks
Diameter of waste outlet hole or punched grill	D_2	52^{+3}_{-2}	70	For all kitchen sinks
		60^{+1}_0	70	For kitchen sinks made of stainless steel, enamelled steel and plastics materials
		62^{+3}_{-2}	85	For kitchen sinks made of ceramics and plastics materials
		90^{+3}_{-2}	115	For all kitchen sinks
Distance between the reference diameter of the waste outlet and the underside of the waste outlet hole	h_2	2 to 25	—	For kitchen sinks without integral overflow
		45 to 65	—	For kitchen sinks made of ceramics with an integral overflow
Distance between the bottom of the bowl and the reference diameter of the waste outlet	e	≥ 2	—	—
Waste outlet hole-sealing surface for the upper side	S_1^b	—	—	—
Waste outlet hole-sealing surface for the underside	S_2	≥ 3	—	—
a D_3 is a reference diameter from which e and h_2 are measured (see external flange diameter E in EN 274-1).				
b S_1 is intended to provide proper sealing between the waste outlet and waste outlet hole.				



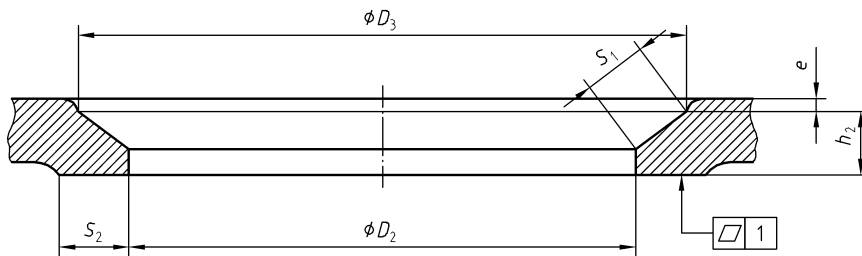
a)



b)



c)



d)

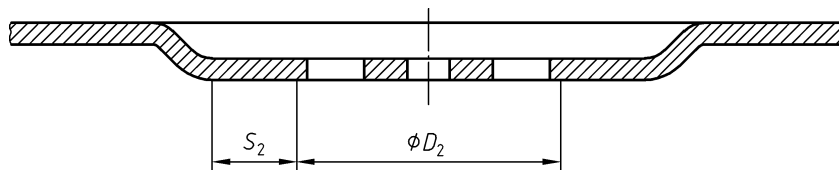
Key

- a) waste outlet hole for kitchen sinks made of stainless steel and enamelled steel
- b) waste outlet hole for kitchen sinks made of stainless steel
- c) waste outlet hole for kitchen sinks made of ceramics and plastics materials
- d) waste outlet hole for kitchen sinks made of plastics materials

NOTE For explanation of symbols see Table 1.

^a The tolerance allowed for the planarity of the surface is 1.

Figure 1 — Shapes for waste outlet holes



NOTE For explanation of symbols see Table 1

Figure 2 — Punched grill

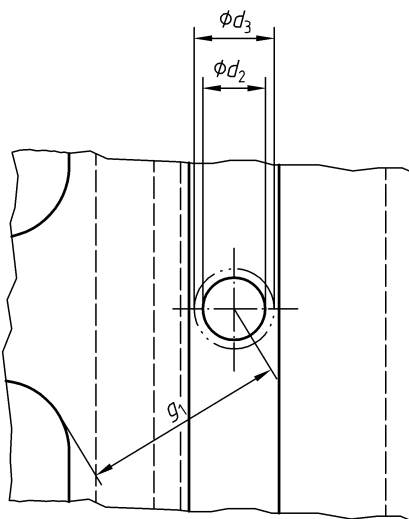
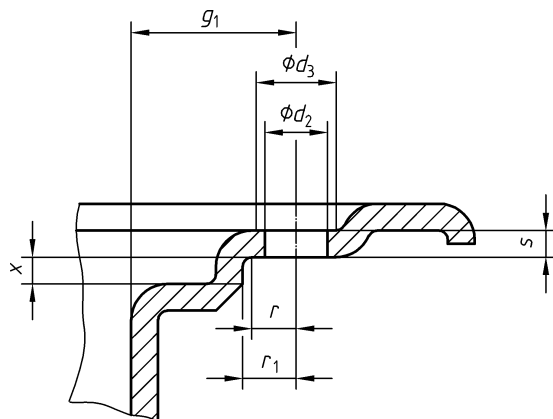
5 Fitting area for tap holes

5.1 Fitting area for a single tap hole

The fitting area for the single tap hole shall comply with the requirements given in Table 2.

Table 2 — Dimensions for the fitting area for the single tap hole (see Figure 3)

Designation	Symbol	Value mm
Diameter of tap hole	d_2	35^{+2}_{-1}
Diameter of the clearance for the tap pedestal	d_3	≥ 64
Thickness of the material in the area of the tap hole	s	≤ 18
Clearance radius of a cylinder having the same centre line as the tap hole of a depth 0 mm to 5 mm from the lower plane of the tap hole	r	≥ 25
Clearance radius of a cylinder having the same centre line as the tap hole of a depth of min. 5 mm from the lower plane of the tap hole	r_1	≥ 30
Difference in level between r and r_1 for tool accessibility	x	≤ 5
Distance between the centre line of the tap hole and the nearest edge of the bowl for choice of tap	g_1	Shall be stated by the manufacturer



NOTE For explanation of symbols see Table 2

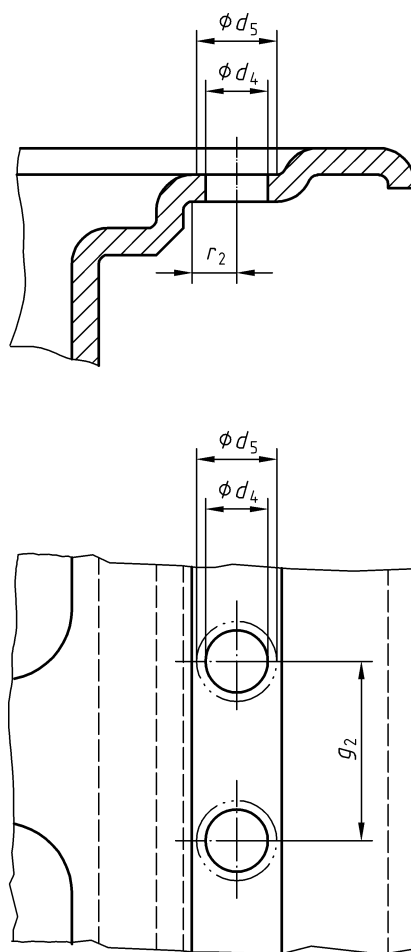
Figure 3 — Fitting area for the single tap hole

5.2 Fitting area for the two-hole mixer tap

The fitting area for the two-hole mixer tap shall comply with the requirement given in Table 3.

Table 3 — Dimensions for the fitting area for two-hole mixer tap (see Figure 4)

Designation	Symbol	Value mm
Diameter of the tap hole	d_4	$32 \begin{smallmatrix} 0 \\ -2 \end{smallmatrix}$
Diameter of the clearance of the tap pedestal	d_5	≥ 64
Distance between the centre lines of the tap hole	g_2	180 ± 5
Radius of the clearance of a cylinder having the same centre line as the tap hole on the underside of the kitchen sink	r_2	≥ 25



NOTE For explanation of symbols see Table 3

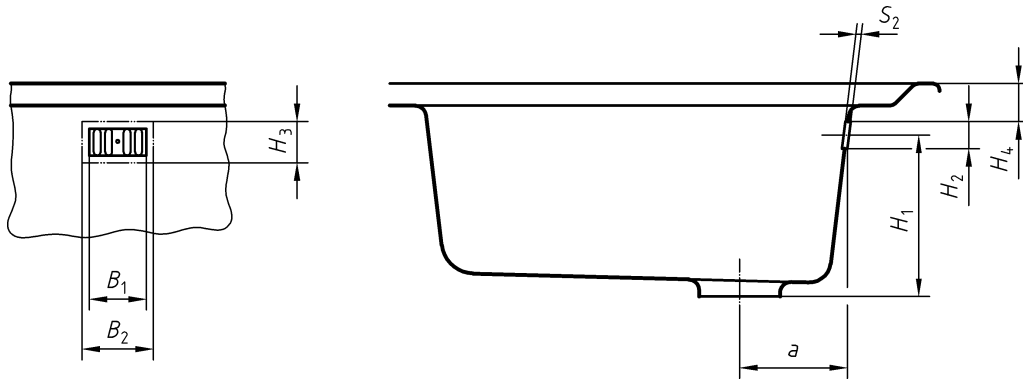
Figure 4 — Fitting area for the two-hole mixer tap

6 Overflow holes

Overflow holes, if provided, shall meet the requirements of Table 4 except when the overflow and its pipework is supplied by the manufacturer together with the kitchen sink or for kitchen sinks with an integral overflow.

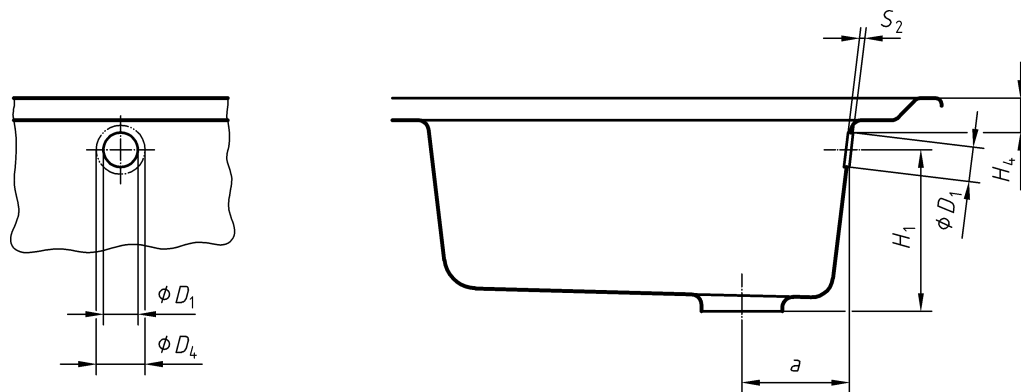
Table 4 — Dimensions for overflow holes (see Figures 5, 6 and 7)

Designation	Symbol	Value mm
Distance from the centre of the waste outlet to a vertical line drawn from the centre of the overflow hole	a	≤ 120
Distance from the horizontal drawn through the centre of the overflow hole and the underside of the waste outlet hole	H_1	110 to 180
Depth of the overflow hole	H_2	25_{-5}^0
Width of the overflow hole	B_1	53_{-5}^0
Width of the clearance of the overflow hole	B_2	≥ 58
Depth of the clearance of the overflow hole	H_3	≥ 30
Distance between spill-over level of the kitchen sink and top of overflow hole	H_4	≥ 15
Diameter of the overflow hole	D_1	32_{-1}^{+2}
Clearance in the area of overflow hole	D_4	≥ 36
Distance between centre lines of waste outlet holes	X	≤ 400
Thickness of the material in the area of the overflow hole	s_2	≤ 25



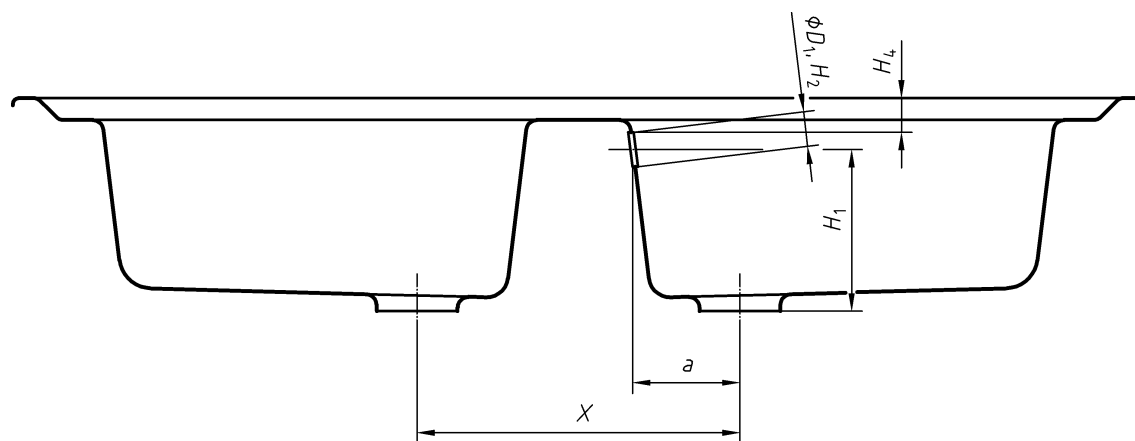
NOTE For explanation of symbols see Table 4

Figure 5 — Overflow hole, rectangular



NOTE For explanation of symbols see Table 4

Figure 6 — Overflow hole, round



NOTE For explanation of symbols see Table 4

Figure 7 — Connecting dimensions for kitchen sinks with two bowls

Bibliography

- [1] EN 274-1, *Waste fittings for sanitary appliances – Part 1: Requirements*

BSI — British Standards Institution

BSI is the independent national body responsible for preparing British Standards. It presents the UK view on standards in Europe and at the international level. It is incorporated by Royal Charter.

Revisions

British Standards are updated by amendment or revision. Users of British Standards should make sure that they possess the latest amendments or editions.

It is the constant aim of BSI to improve the quality of our products and services. We would be grateful if anyone finding an inaccuracy or ambiguity while using this British Standard would inform the Secretary of the technical committee responsible, the identity of which can be found on the inside front cover.
Tel: +44 (0)20 8996 9000. Fax: +44 (0)20 8996 7400.

BSI offers members an individual updating service called PLUS which ensures that subscribers automatically receive the latest editions of standards.

Buying standards

Orders for all BSI, international and foreign standards publications should be addressed to Customer Services. Tel: +44 (0)20 8996 9001.
Fax: +44 (0)20 8996 7001. Email: orders@bsi-global.com. Standards are also available from the BSI website at <http://www.bsi-global.com>.

In response to orders for international standards, it is BSI policy to supply the BSI implementation of those that have been published as British Standards, unless otherwise requested.

Information on standards

BSI provides a wide range of information on national, European and international standards through its Library and its Technical Help to Exporters Service. Various BSI electronic information services are also available which give details on all its products and services. Contact the Information Centre.
Tel: +44 (0)20 8996 7111. Fax: +44 (0)20 8996 7048. Email: info@bsi-global.com.

Subscribing members of BSI are kept up to date with standards developments and receive substantial discounts on the purchase price of standards. For details of these and other benefits contact Membership Administration.
Tel: +44 (0)20 8996 7002. Fax: +44 (0)20 8996 7001.
Email: membership@bsi-global.com.

Information regarding online access to British Standards via British Standards Online can be found at <http://www.bsi-global.com/bsonline>.

Further information about BSI is available on the BSI website at <http://www.bsi-global.com>.

Copyright

Copyright subsists in all BSI publications. BSI also holds the copyright, in the UK, of the publications of the international standardization bodies. Except as permitted under the Copyright, Designs and Patents Act 1988 no extract may be reproduced, stored in a retrieval system or transmitted in any form or by any means – electronic, photocopying, recording or otherwise – without prior written permission from BSI.

This does not preclude the free use, in the course of implementing the standard, of necessary details such as symbols, and size, type or grade designations. If these details are to be used for any other purpose than implementation then the prior written permission of BSI must be obtained.

Details and advice can be obtained from the Copyright & Licensing Manager.
Tel: +44 (0)20 8996 7070. Fax: +44 (0)20 8996 7553.
Email: copyright@bsi-global.com.