

Leather — Physical and mechanical tests — Determination of flex resistance by the vamp flex method (ISO 22288:2006)

ICS 59.140.30

National foreword

This British Standard is the UK implementation of EN ISO 22288:2009. It is identical to ISO 22288:2006. It supersedes BS EN 13335:2002 which is withdrawn.

The UK participation in its preparation was entrusted to Technical Committee TCI/69, Footwear, leather and coated fabrics.

A list of organizations represented on this committee can be obtained on request to its secretary.

This publication does not purport to include all the necessary provisions of a contract. Users are responsible for its correct application.

Compliance with a British Standard cannot confer immunity from legal obligations.

This British Standard was published under the authority of the Standards Policy and Strategy Committee on 28 February 2009

© BSI 2009

ISBN 978 0 580 66888 3

Amendments/corrigenda issued since publication

Date	Comments

English Version

Leather - Physical and mechanical tests - Determination of flex resistance by the vamp flex method (ISO 22288:2006)

Cuir - Essais physiques et mécaniques - Détermination de la résistance à la flexion à l'aide de la méthode de flexion d'empeigne (ISO 22288:2006)

Leder - Physikalische und mechanische Prüfungen - Bestimmung der Dauerbiegefestigkeit nach dem Blattbiege-Verfahren (ISO 22288:2006)

This European Standard was approved by CEN on 1 December 2008.

CEN members are bound to comply with the CEN/CENELEC Internal Regulations which stipulate the conditions for giving this European Standard the status of a national standard without any alteration. Up-to-date lists and bibliographical references concerning such national standards may be obtained on application to the CEN Management Centre or to any CEN member.

This European Standard exists in three official versions (English, French, German). A version in any other language made by translation under the responsibility of a CEN member into its own language and notified to the CEN Management Centre has the same status as the official versions.

CEN members are the national standards bodies of Austria, Belgium, Bulgaria, Cyprus, Czech Republic, Denmark, Estonia, Finland, France, Germany, Greece, Hungary, Iceland, Ireland, Italy, Latvia, Lithuania, Luxembourg, Malta, Netherlands, Norway, Poland, Portugal, Romania, Slovakia, Slovenia, Spain, Sweden, Switzerland and United Kingdom.



EUROPEAN COMMITTEE FOR STANDARDIZATION
 COMITÉ EUROPÉEN DE NORMALISATION
 EUROPÄISCHES KOMITEE FÜR NORMUNG

Management Centre: rue de Stassart, 36 B-1050 Brussels

Foreword

The text of ISO 22288:2006 has been prepared by Technical Committee IULTCS International Union of Leather Technologists and Chemists Societies of the International Organization for Standardization (ISO) and has been taken over as EN ISO 22288:2009 by Technical Committee CEN/TC 289 "Leather" the secretariat of which is held by UNI.

This European Standard shall be given the status of a national standard, either by publication of an identical text or by endorsement, at the latest by July 2009, and conflicting national standards shall be withdrawn at the latest by July 2009.

Attention is drawn to the possibility that some of the elements of this document may be the subject of patent rights. CEN [and/or CENELEC] shall not be held responsible for identifying any or all such patent rights.

This document supersedes EN 13335:2002.

According to the CEN/CENELEC Internal Regulations, the national standards organizations of the following countries are bound to implement this European Standard: Austria, Belgium, Bulgaria, Cyprus, Czech Republic, Denmark, Estonia, Finland, France, Germany, Greece, Hungary, Iceland, Ireland, Italy, Latvia, Lithuania, Luxembourg, Malta, Netherlands, Norway, Poland, Portugal, Romania, Slovakia, Slovenia, Spain, Sweden, Switzerland and the United Kingdom.

Endorsement notice

The text of ISO 22288:2006 has been approved by CEN as a EN ISO 22288:2009 without any modification.

Foreword

ISO (the International Organization for Standardization) is a worldwide federation of national standards bodies (ISO member bodies). The work of preparing International Standards is normally carried out through ISO technical committees. Each member body interested in a subject for which a technical committee has been established has the right to be represented on that committee. International organizations, governmental and non-governmental, in liaison with ISO, also take part in the work. ISO collaborates closely with the International Electrotechnical Commission (IEC) on all matters of electrotechnical standardization.

International Standards are drafted in accordance with the rules given in the ISO/IEC Directives, Part 2.

The main task of technical committees is to prepare International Standards. Draft International Standards adopted by the technical committees are circulated to the member bodies for voting. Publication as an International Standard requires approval by at least 75 % of the member bodies casting a vote.

Attention is drawn to the possibility that some of the elements of this document may be the subject of patent rights. ISO shall not be held responsible for identifying any or all such patent rights.

ISO 22288 was prepared by the Physical Test Commission of the International Union of Leather Technologists and Chemists Societies (IUP Commission, IULTCS) in collaboration with the European Committee for Standardization (CEN) Technical Committee CEN/TC 289 *Leather*, the secretariat of which is held by UNI. It was published as EN 13335. It is based on IUP 39 published in *J. Soc. Leather Tech. Chem.*, **84** (7), p. 381, 2000, and declared an official method of the IULTCS in March 2001.

IULTCS, originally formed in 1897, is a world-wide organization of professional leather societies to further the advancement of leather science and technology. IULTCS has three Commissions, which are responsible for establishing international methods for the sampling and testing of leather. ISO recognizes IULTCS as an international standardizing body for the preparation of test methods for leather.

Leather — Physical and mechanical tests — Determination of flex resistance by the vamp flex method

1 Scope

This International Standard specifies a method for determining the wet or dry flex resistance of leather and finishes applied to leather. It is applicable to all types of leather below 3,0 mm in thickness.

2 Normative references

The following referenced documents are indispensable for the application of this document. For dated references, only the edition cited applies. For undated references, the latest edition of the referenced document (including any amendments) applies.

ISO 2418, *Leather — Chemical, physical and mechanical and fastness tests — Sampling location*

ISO 2419, *Leather — Physical and mechanical tests — Sample preparation and conditioning*

ISO 3696, *Water for analytical laboratory use — Specification and test methods*

3 Principle

A test piece is folded grain outwards over two inverted “V” shaped clamps. Relative movement of the clamps flexes the sample producing one downward crease surrounded by four upward creases. The test piece is examined periodically for damage.

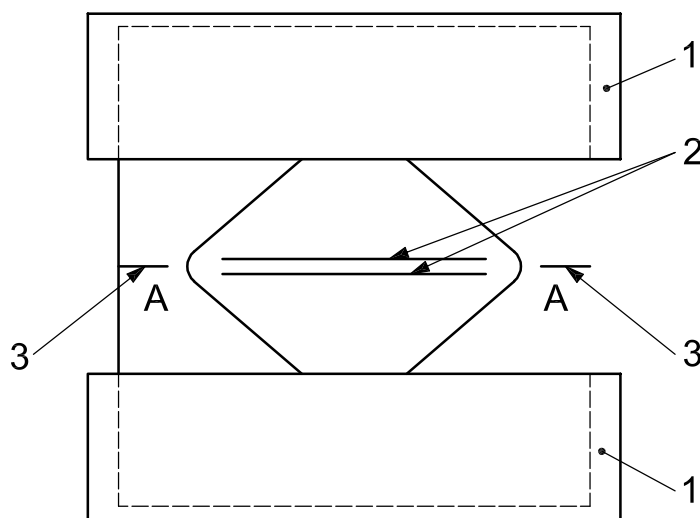
4 Apparatus

4.1 Test machine, including the parts described in 4.1.1 to 4.1.3 and the crease patterns formed by flexing as shown in Figure 1.

4.1.1 A pair of inverted “V” shaped blocks and clamps, with the axis mounted in a straight line with an angle of $40^\circ \pm 1^\circ$ and a tip radius of $6,4 \text{ mm} \pm 0,5 \text{ mm}$ and with a minimum distance between the clamps of $9,5 \text{ mm} \pm 1,0 \text{ mm}$.

4.1.2 A means of applying a simple harmonic reciprocating motion to the clamps, to move them apart by $19,0 \text{ mm} \pm 1,5 \text{ mm}$ and return them to the minimum separation at a rate of oscillation of $300 \text{ cycles/min} \pm 30 \text{ cycles/min}$.

4.1.3 Counter, to indicate the number of cycles.



Key

- 1 clamp
- 2 folds with outer surface inwards
- 3 folds with outer surface outwards

Figure 1 — Plan view — Crease pattern formed by flexing

- 4.2 Press knife**, conforming to the requirements of ISO 2419, the inner wall of which is a square of side 64 mm ± 1 mm.
- 4.3 Magnifier**, with a magnification of 4 to 6 times.
- 4.4 Distilled or deionized water**, conforming to the requirements of grade 3 of ISO 3696.

5 Sampling and sample preparation

5.1 Sample in accordance with ISO 2418. Cut four test pieces parallel to the backbone and four test pieces perpendicular to the backbone by applying the press knife (4.2) to the grain surface. Use two test pieces parallel to and two test pieces perpendicular to the backbone for dry tests, and two test pieces parallel to and two test pieces perpendicular to the backbone for wet tests.

NOTE If there is a requirement for more than two hides or skins to be tested in one batch, then only two samples in each direction need be taken from each hide or skin, giving one sample in each direction for both dry and wet, provided that the overall total is not less than four test pieces in each direction.

- 5.2** For dry flex testing, condition the test pieces in accordance with ISO 2419 and perform the test in the conditioned atmosphere.
- 5.3** For wet flex testing, the test pieces can be wetted by rubbing 1 ml of distilled or deionized water into the flesh surface of the leather. The wetting should be repeated every 25,000 flexes during the test. Carry out wet flexing without delay.

6 Procedure

6.1 Remove the upper parts of the clamps (4.1.1) and adjust the test machine so that the clamps are at their maximum separation.

6.2 Fold the test piece evenly over the “V” shaped clamps and hold in place by replacing the upper parts of the clamps, ensuring that there is no slack in the test piece. Position two test pieces so that the direction of the backbone is along the axis of movement of the clamps and two so that it is perpendicular to the axis.

6.3 Slowly move the clamps together and observe the test pieces to ensure that the centre of each test piece folds downwards. If this is not the case, apply gentle pressure to the centre of the ridge as the clamps move together to make a downward fold form.

6.4 Run the machine for the required number of flex cycles selected from the following list:

- Dry flex: 50 000; 100 000; 250 000; 500 000; 1 000 000 cycles;
- Wet flex: 50 000; 100 000 cycles.

In addition to the above inspection points, remove the wet test pieces from the machine every 25 000 cycles and examine them for spue before re-wetting and replacing in the test machine.

6.5 Stop the test machine and remove the test piece. Examine visually in good light using the naked eye and with the magnifier (4.3). Examine the test piece with it both lying flat and folded. Record any damage in the flexed area, ignoring damage in the clamped area. Cut through the flexed area if required to assist identification of loose leather structure.

NOTE Cutting through the test piece damages it too severely to allow further testing and may only be carried out after the final inspection.

The damage may include the following:

- a) creasing in the central inward fold;
- b) cracking in the central inward fold, (the number of cracks and the depth may be reported if it is feasible);
- c) cracking in the outward folds, (the number of cracks and the depth may be reported if it is feasible);
- d) delamination or flaking of the surface finish;
- e) cracking extending to the edge of the test piece;
- f) salt spue (wet flex only), judging as “light”, “medium” or “heavy” by eye.

6.6 If required, replace the test piece in the clamps using the marks produced by the clamps as a guide to ensure that the test piece is returned to its original position in the clamps.

6.7 Restart the machine and continue to the next required number of cycles. Repeat the inspection given in 6.5.

6.8 Repeat steps 6.6 and 6.7 if required for other numbers of flex cycles.

NOTE The actual number of cycles chosen will depend on the specification, the end use of the leather and the expected performance.

7 Test report

The test report shall include the following:

- a) a reference to this International Standard; i.e. ISO 22288:2006;
- b) whether the leather was tested wet or dry;
- c) the number of flex cycles and damage at each inspection stage;
- d) the standard atmosphere used for conditioning and testing as given in ISO 2419 (i.e. 20 °C/65 % RH or 23 °C/50 % RH);
- e) any deviations from the method specified in this International Standard;
- f) full details for identification of the sample and any deviation from ISO 2418 with respect to sampling.

Annex A (informative)

Sources of apparatus

Examples of suitable products available commercially are given below.

The recommended apparatus is the vamp flexer manufactured, for example, by:

SATRA Footwear Technology Centre ¹⁾, Rockingham Road, Kettering, Northamptonshire, NN16 9JH, United Kingdom.

Muver - Francisco Muñoz Irlés¹⁾, Avda Hispanoamerica 42, E-03610 Petrer (Alicante), Spain.

1) SATRA Footwear Technology Centre and Muver - Francisco Muñoz Irlés are examples of suppliers of suitable products available commercially. This information is given for the convenience of users of this International Standard and does not constitute an endorsement by ISO of their products.

BSI - British Standards Institution

BSI is the independent national body responsible for preparing British Standards. It presents the UK view on standards in Europe and at the international level. It is incorporated by Royal Charter.

Revisions

British Standards are updated by amendment or revision. Users of British Standards should make sure that they possess the latest amendments or editions.

It is the constant aim of BSI to improve the quality of our products and services. We would be grateful if anyone finding an inaccuracy or ambiguity while using this British Standard would inform the Secretary of the technical committee responsible, the identity of which can be found on the inside front cover. Tel: +44 (0)20 8996 9000. Fax: +44 (0)20 8996 7400.

BSI offers members an individual updating service called PLUS which ensures that subscribers automatically receive the latest editions of standards.

Buying standards

Orders for all BSI, international and foreign standards publications should be addressed to Customer Services. Tel: +44 (0)20 8996 9001. Fax: +44 (0)20 8996 7001 Email: orders@bsigroup.com You may also buy directly using a debit/credit card from the BSI Shop on the Website <http://www.bsigroup.com/shop>

In response to orders for international standards, it is BSI policy to supply the BSI implementation of those that have been published as British Standards, unless otherwise requested.

Information on standards

BSI provides a wide range of information on national, European and international standards through its Library and its Technical Help to Exporters Service. Various BSI electronic information services are also available which give details on all its products and services. Contact Information Centre. Tel: +44 (0)20 8996 7111 Fax: +44 (0)20 8996 7048 Email: info@bsigroup.com

Subscribing members of BSI are kept up to date with standards developments and receive substantial discounts on the purchase price of standards. For details of these and other benefits contact Membership Administration. Tel: +44 (0)20 8996 7002 Fax: +44 (0)20 8996 7001 Email: membership@bsigroup.com

Information regarding online access to British Standards via British Standards Online can be found at <http://www.bsigroup.com/BSOL>

Further information about BSI is available on the BSI website at <http://www.bsigroup.com>.

Copyright

Copyright subsists in all BSI publications. BSI also holds the copyright, in the UK, of the publications of the international standardization bodies. Except as permitted under the Copyright, Designs and Patents Act 1988 no extract may be reproduced, stored in a retrieval system or transmitted in any form or by any means – electronic, photocopying, recording or otherwise – without prior written permission from BSI.

This does not preclude the free use, in the course of implementing the standard, of necessary details such as symbols, and size, type or grade designations. If these details are to be used for any other purpose than implementation then the prior written permission of BSI must be obtained.

Details and advice can be obtained from the Copyright and Licensing Manager. Tel: +44 (0)20 8996 7070 Email: copyright@bsigroup.com