

# Binders for paints and varnishes — Gum rosin — Gas- chromatographic analysis

ICS 87.040; 87.060.20

## National foreword

This British Standard is the UK implementation of EN ISO 19334:2011. It is identical to ISO 19334:2010. It supersedes BS ISO 19334:2010, which is withdrawn.

The UK participation in its preparation was entrusted to Technical Committee STI/3, Paints, media and related products.

A list of organizations represented on this committee can be obtained on request to its secretary.

This publication does not purport to include all the necessary provisions of a contract. Users are responsible for its correct application.

**Compliance with a British Standard cannot confer immunity from legal obligations.**

### Amendments/corrigenda issued since publication

Date	Comments
30 June 2011	This corrigendum renumbers BS ISO 19334:2010 as BS EN ISO 19334:2011

This British Standard was published under the authority of the Standards Policy and Strategy Committee on 31 March 2010

© BSI 2011

ISBN 978 0 580 72664 6

---

EUROPEAN STANDARD

EN ISO 19334

NORME EUROPÉENNE

EUROPÄISCHE NORM

April 2011

ICS 87.040; 87.060.20

English Version

## Binders for paints and varnishes - Gum rosin - Gas-chromatographic analysis (ISO 19334:2010)

Liants pour peintures et vernis - Colophane - Analyse par chromatographie en phase gazeuse (ISO 19334:2010)

Bindemittel für Beschichtungsstoffe - Kolophonium - Gaschromatographische Analyse (ISO 19334:2010)

This European Standard was approved by CEN on 17 March 2011.

CEN members are bound to comply with the CEN/CENELEC Internal Regulations which stipulate the conditions for giving this European Standard the status of a national standard without any alteration. Up-to-date lists and bibliographical references concerning such national standards may be obtained on application to the CEN-CENELEC Management Centre or to any CEN member.

This European Standard exists in three official versions (English, French, German). A version in any other language made by translation under the responsibility of a CEN member into its own language and notified to the CEN-CENELEC Management Centre has the same status as the official versions.

CEN members are the national standards bodies of Austria, Belgium, Bulgaria, Croatia, Cyprus, Czech Republic, Denmark, Estonia, Finland, France, Germany, Greece, Hungary, Iceland, Ireland, Italy, Latvia, Lithuania, Luxembourg, Malta, Netherlands, Norway, Poland, Portugal, Romania, Slovakia, Slovenia, Spain, Sweden, Switzerland and United Kingdom.



EUROPEAN COMMITTEE FOR STANDARDIZATION  
COMITÉ EUROPÉEN DE NORMALISATION  
EUROPÄISCHES KOMITEE FÜR NORMUNG

Management Centre: Avenue Marnix 17, B-1000 Brussels



## **Foreword**

The text of ISO 19334:2010 has been prepared by Technical Committee ISO/TC 35 “Paints and varnishes” of the International Organization for Standardization (ISO) and has been taken over as EN ISO 19334:2011 by Technical Committee CEN/TC 139 “Paints and varnishes” the secretariat of which is held by DIN.

This European Standard shall be given the status of a national standard, either by publication of an identical text or by endorsement, at the latest by October 2011, and conflicting national standards shall be withdrawn at the latest by October 2011.

Attention is drawn to the possibility that some of the elements of this document may be the subject of patent rights. CEN [and/or CENELEC] shall not be held responsible for identifying any or all such patent rights.

According to the CEN/CENELEC Internal Regulations, the national standards organizations of the following countries are bound to implement this European Standard: Austria, Belgium, Bulgaria, Croatia, Cyprus, Czech Republic, Denmark, Estonia, Finland, France, Germany, Greece, Hungary, Iceland, Ireland, Italy, Latvia, Lithuania, Luxembourg, Malta, Netherlands, Norway, Poland, Portugal, Romania, Slovakia, Slovenia, Spain, Sweden, Switzerland and the United Kingdom.

### **Endorsement notice**

The text of ISO 19334:2010 has been approved by CEN as a EN ISO 19334:2011 without any modification.

## Introduction

Gum rosins are important commercial materials, primarily composed of rosin acids, but also containing some neutral material. For many applications, it is necessary to know the level of the individual rosin acids present in these products. Gas chromatography has proven to be a useful tool for such determinations (see ASTM D 509), and capillary chromatography, specified in these test methods, is considered to be the most effective gas-chromatographic technique currently available.

Due to hydrogen bonding, unmodified rosin acids cannot be volatilized at atmospheric pressure without undergoing decomposition. So, it is necessary to convert the free acids to more volatile and more stable methyl esters, prior to chromatographic separation.

This International Standard describes one way to prepare methyl esters. The classic method is through the use of diazomethane, but diazomethane is a hazardous and toxic material, and so is no longer the preferred agent.

Trimethylphenylammonium hydroxide (TMPAH) and tetramethylammonium hydroxide (TMAH) are satisfactory methylating agents as both produce results that are very similar to those of diazomethane, but without the hazards that are associated with diazomethane.

*N,N*-dimethylformamide dimethyl acetal (DMF-DMA) gives results comparable to those obtained with TMPAH and TMAH and is easy and safe to use. However, the reagent is moisture-sensitive, requiring samples to be free of any significant levels of water.

This International Standard specifies the method using TMAH.

# Binders for paints and varnishes — Gum rosin — Gas-chromatographic analysis

## 1 Scope

This International Standard specifies a gas-chromatographic method for determining the amounts of certain rosin acids in gum rosin using capillary gas-chromatographic separation of the volatile methyl esters of these acids. It is intended primarily to permit the identification of gum rosin from specific species of pine trees. It is not designed for the quantitative analysis of gum rosin. If such analyses are required, the internal-standard technique specified in ASTM D 5974 should be used.

## 2 Normative references

The following referenced documents are indispensable for the application of this document. For dated references, only the edition cited applies. For undated references, the latest edition of the referenced document (including any amendments) applies.

GB 8145, *Gum rosin — Test methods of rosin*

ASTM D 509, *Standard Test Methods of Sampling and Grading Rosin*

Naval Stores Act of 1923 (42 Stat 1435.7, USC 91-99) as amended in 1951

## 3 Sampling

Take a representative sample following the procedures specified in GB 8145, ASTM D 509 or the Naval Stores Act of 1923 (42 Stat 1435.7, USC 91-99) as amended in 1951.

NOTE Rosin samples need to be freshly broken from a larger mass to ensure the results are not affected by air oxidation of the rosin.

## 4 Apparatus

### 4.1 Gas chromatograph

Use an instrument equipped with a flame-ionization detector (FID) that can be operated under the conditions given in 7.1.

### 4.2 Column

The recommended (referee) column is a fused-silica BDS column 25 m in length, 0,32 mm in internal diameter and with a 0,20  $\mu\text{m}$  film thickness, which gives separation equivalent to or better than that shown in Figures 1 to 3.

If other columns are used, the operating conditions shall be chosen such that the separation obtained is equivalent to or better than that shown in Figures 1 to 3.

## 5 Reagents and materials

Reagent-grade chemicals should preferably be used in all analyses. If other grades are used, it shall be first ascertained that the reagent concerned is of sufficiently high purity to permit its use without lessening the accuracy of the determination.

**5.1 Tetramethylammonium hydroxide (TMAH) solution, 24 % in methanol, CAS No. 75-59-2**

**5.2 Tetramethylammonium hydroxide (TMAH) solution, 6 % in methanol.** Dilute 25 ml of the reagent described in 5.1 with 75 ml of methanol.

**5.3 Phenolphthalein solution, 1 % (mass per volume) in methanol**

**5.4 Methanol, anhydrous**

**5.5 Toluene (optional)**

## 6 Preparation of methyl esters

Weigh approximately 50 mg of the sample into a suitable vial, and dissolve it in 0,5 ml to 3,0 ml of methanol. Add 2 to 3 drops of phenolphthalein indicator solution, and titrate to a pink colour (pH 7,8 to 8,1) with the solution of 6 % solution. When the solution is injected into the heated injection port of the chromatograph, the tetramethylammonium salts are pyrolyzed to methyl esters.

NOTE For solid rosin, 2 to 3 drops of toluene may be added to the vial prior to the addition of TMAH, to assist in dissolving the sample.

## 7 Gas-chromatographic analysis

### 7.1 Set-up of gas chromatograph (GC)

Set the GC conditions so that they are approximately as follows (see also the last paragraph in this subclause):

Column temperature:	195 °C, isothermal
Injection port temperature:	300 °C
Injection port liner:	glass splitter
Detector temperature:	280 °C
Carrier gas:	hydrogen or helium
Linear flow rate:	40 cm/s
Split ratio:	40 to 1
Detector:	FID
	hydrogen: 50 kPa
	air: 100 kPa

These are the typical operating conditions for the instrument using the BDS column. The particular equipment used shall be adjusted in accordance with the manufacturer's instructions to optimize its performance. Ongoing adjustment of operating temperature and flow rate may be necessary to maintain optimum performance of the column due to ageing.

### 7.2 Analysis

Inject 0,5 µl to 1,0 µl of the test sample prepared in Clause 6.

NOTE Dilution of the sample with additional solvent may be necessary to obtain injections that do not overload the column or detector.



### 7.3 Calculation

Sum all the areas of the individual peaks, exclusive of the solvent peak, to obtain the total peak area.

Calculate the relative percentage of each rosin acid methyl ester present, uncorrected for the amount of polymeric materials present, using the equation

$$\text{Rosin acid(\%)} = \frac{A \times 100}{A_{\text{Tot}}}$$

where

$A$  is the peak area for the rosin acid methyl ester being determined;

$A_{\text{Tot}}$  is the sum of the areas of all rosin acid methyl ester peaks.

NOTE See Figures 1 to 3 for typical chromatograms of selected gum rosins and Table 1 for their compositions determined from these and other such chromatograms.

## 8 Test report

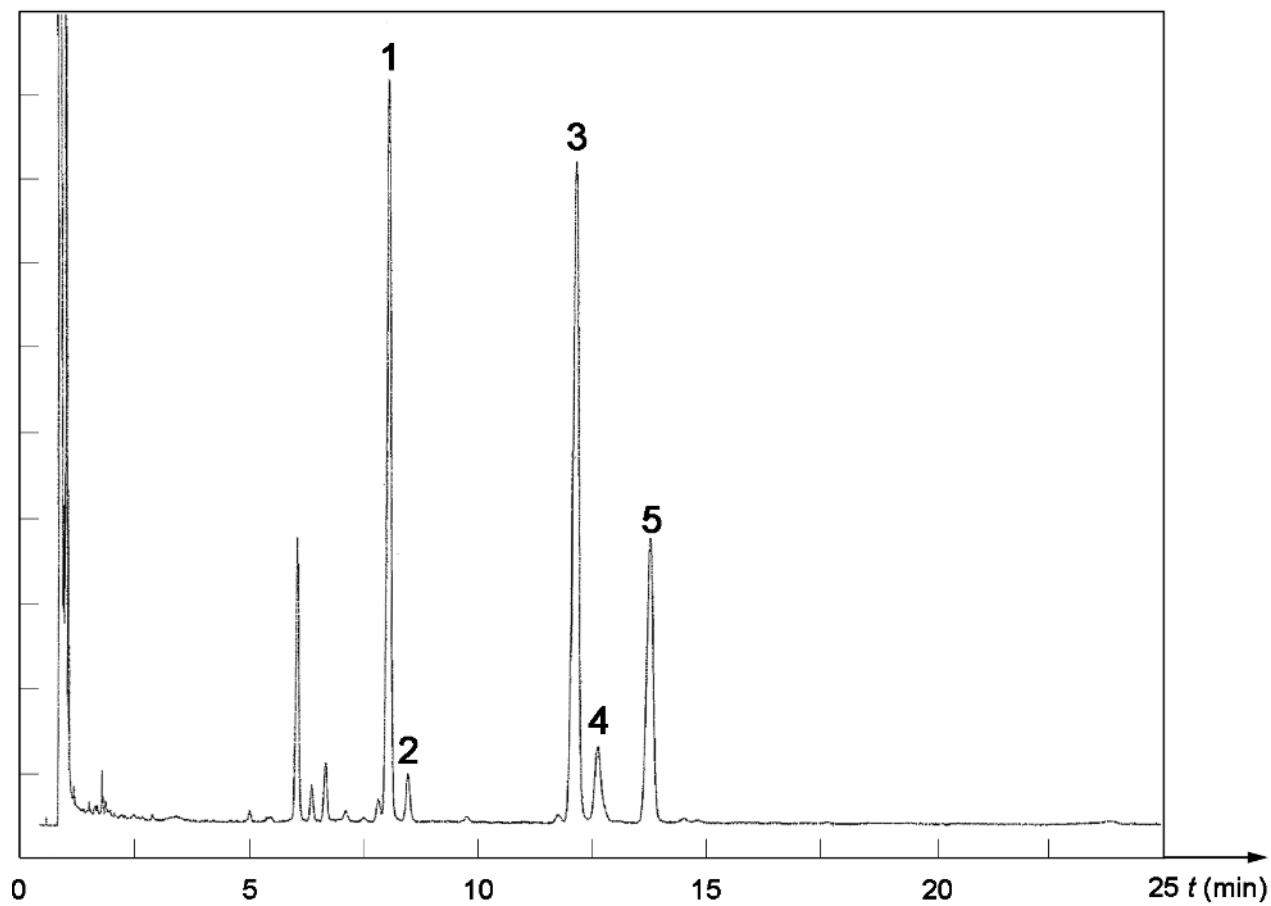
The test report shall contain at least the following information:

- all details to identify the product tested;
- reference to this International Standard (ISO 19334:2010);
- the area percent of individual rosin acids to the nearest 0,1 %;
- by comparison with Table 1 and Figures 1 to 3, the identity of the gum rosin;
- any deviation from the test method specified;
- the date of the test.

**Table 1 — Typical contents of characteristic rosin acids in gum rosins from pine species**  
(determined by the gas-chromatographic method specified in this International Standard)

Rosin acid	<i>Pinus massoniana</i>	<i>Pinus merkusii</i>	<i>Pinus elliottii</i>	<i>Pinus pinaster</i>	<i>Pinus caribaea</i>	<i>Pinus keyisia</i>	<i>Pinus yunnanensis</i>	Relative Retention
	%	%	%	%	%	%	%	
Communic	0	0	5	0	1	0	0	0,588
Palustric	25	20	19	19	22	20	26	0,634
Isopimaric	2	15	17	5	8	4	6	0,664
Abietic	35	35	23	38	35	41	31	0,967
Dehydroabietic	4	5	5	6	7	4	5	1,000
Neoabietic	16	5	20	16	17	18	22	1,092
Mercusic	0	7	0	0	0	0	0	1,514

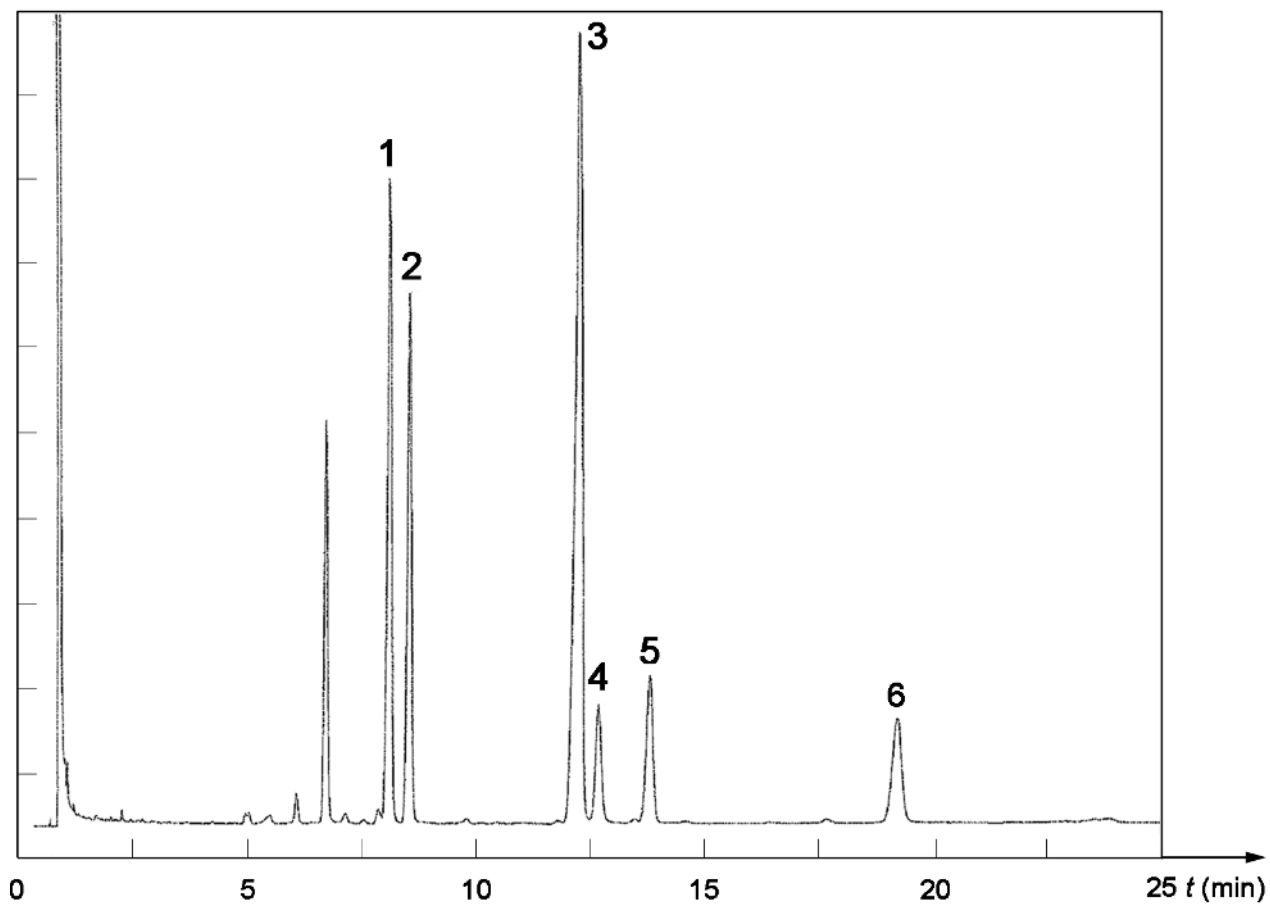
NOTE Capillary gas-liquid chromatography (GLC). Labelled peaks eluated as methyl esters. Conversion of rosin acids to their methyl deviates by means of tetramethylammonium hydroxide (TMAH) procedure. Column: fused silica BDS,  $l = 25$  m,  $d = 0,32$  mm, film thickness =  $0,2$   $\mu\text{m}$ ,  $T = 195$  °C (isothermal), carrier gas  $\text{H}_2$  at 50 kPa.



**Key**

- 1 palustric acid
- 2 isopimaric acid
- 3 abietic acid
- 4 dehydroabietic acid
- 5 neoabietic acid

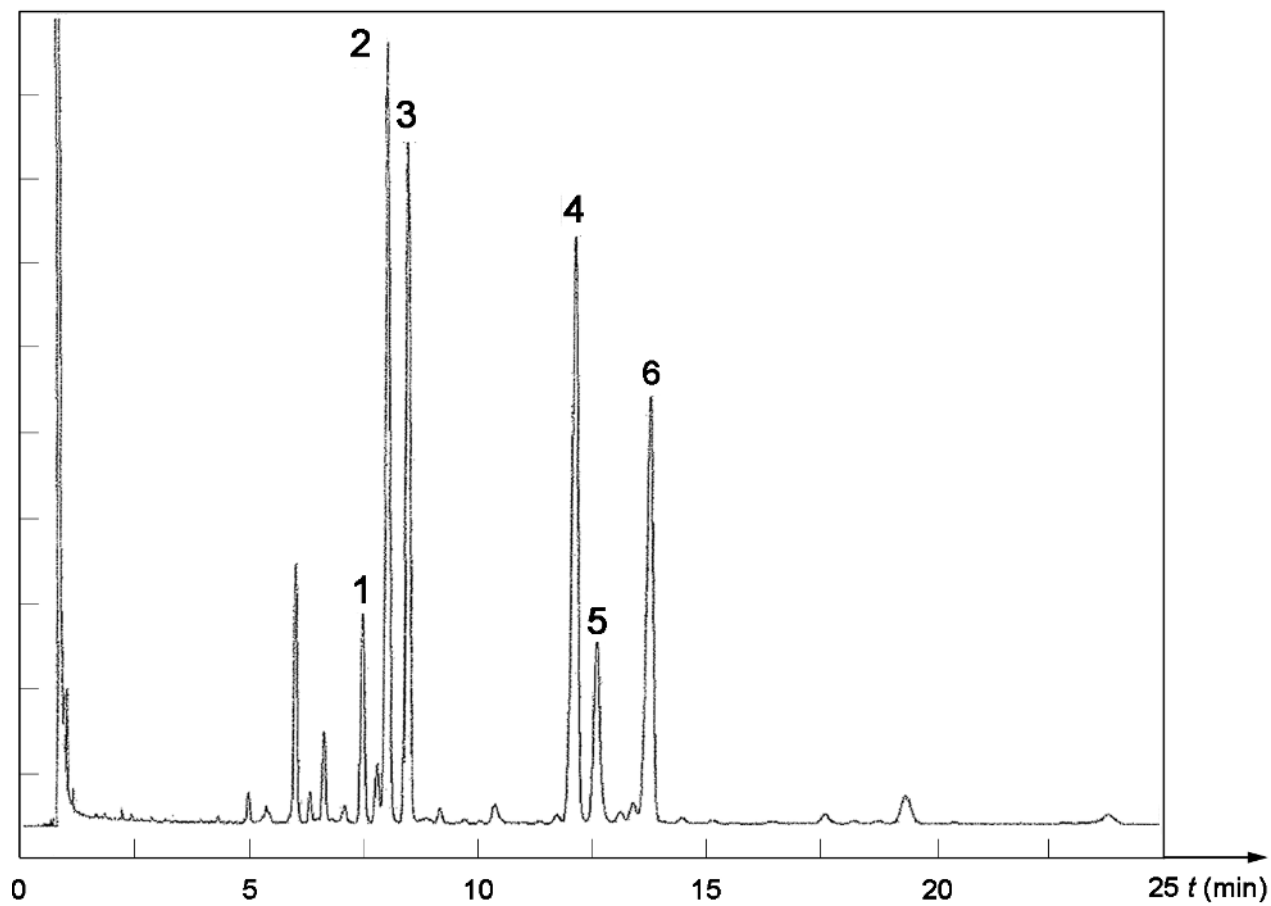
**Figure 1 — Chromatogram of rosin acid methyl esters from *Pinus massoniana* rosin**



**Key**

- 1 palustric acid
- 2 isopimaric acid
- 3 abietic acid
- 4 dehydroabietic acid
- 5 neoabietic acid
- 6 mercusic acid

**Figure 2 — Chromatogram of resin acid methyl esters from *Pinus merkusii* rosin**



**Key**

- 1 communic acid
- 2 palustric acid
- 3 isopimaric acid
- 4 abietic acid
- 5 dehydroabietic acid
- 6 neoabietic acid

**Figure 3 — Chromatogram of resin acid methyl esters from *Pinus elliotii* rosin**

## Bibliography

- [1] ASTM D 5974, *Standard Test Methods for Fatty and Rosin Acids in Tall Oil Fractionation Products by Capillary Gas Chromatography*





---

## BSI - British Standards Institution

BSI is the independent national body responsible for preparing British Standards. It presents the UK view on standards in Europe and at the international level. It is incorporated by Royal Charter.

### Revisions

British Standards are updated by amendment or revision. Users of British Standards should make sure that they possess the latest amendments or editions.

It is the constant aim of BSI to improve the quality of our products and services. We would be grateful if anyone finding an inaccuracy or ambiguity while using this British Standard would inform the Secretary of the technical committee responsible, the identity of which can be found on the inside front cover. Tel: +44 (0)20 8996 9000. Fax: +44 (0)20 8996 7400.

BSI offers members an individual updating service called PLUS which ensures that subscribers automatically receive the latest editions of standards.

### Buying standards

Orders for all BSI, international and foreign standards publications should be addressed to Customer Services. Tel: +44 (0)20 8996 9001. Fax: +44 (0)20 8996 7001 Email: [orders@bsigroup.com](mailto:orders@bsigroup.com) You may also buy directly using a debit/credit card from the BSI Shop on the Website <http://www.bsigroup.com/shop>

In response to orders for international standards, it is BSI policy to supply the BSI implementation of those that have been published as British Standards, unless otherwise requested.

### Information on standards

BSI provides a wide range of information on national, European and international standards through its Library and its Technical Help to Exporters Service. Various BSI electronic information services are also available which give details on all its products and services. Contact Information Centre. Tel: +44 (0)20 8996 7111 Fax: +44 (0)20 8996 7048 Email: [info@bsigroup.com](mailto:info@bsigroup.com)

Subscribing members of BSI are kept up to date with standards developments and receive substantial discounts on the purchase price of standards. For details of these and other benefits contact Membership Administration. Tel: +44 (0)20 8996 7002 Fax: +44 (0)20 8996 7001 Email: [membership@bsigroup.com](mailto:membership@bsigroup.com)

Information regarding online access to British Standards via British Standards Online can be found at <http://www.bsigroup.com/BSOL>

Further information about BSI is available on the BSI website at <http://www.bsigroup.com>

### Copyright

Copyright subsists in all BSI publications. BSI also holds the copyright, in the UK, of the publications of the international standardization bodies. Except as permitted under the Copyright, Designs and Patents Act 1988 no extract may be reproduced, stored in a retrieval system or transmitted in any form or by any means – electronic, photocopying, recording or otherwise – without prior written permission from BSI.

This does not preclude the free use, in the course of implementing the standard, of necessary details such as symbols, and size, type or grade designations. If these details are to be used for any other purpose than implementation then the prior written permission of BSI must be obtained.

Details and advice can be obtained from the Copyright and Licensing Manager. Tel: +44 (0)20 8996 7070 Email: [copyright@bsigroup.com](mailto:copyright@bsigroup.com)