



BSI Standards Publication

**Wholemeal and flour from
wheat (*Triticum aestivum* L.) —
Determination of rheological
behaviour as a function of
mixing and temperature
increase**

National foreword

This British Standard is the UK implementation of EN ISO 17718:2014. It is identical to ISO 17718:2013. It supersedes BS ISO 17718:2013, which is withdrawn.

The UK participation in its preparation was entrusted to Technical Committee AW/4, Cereals and pulses.

A list of organizations represented on this committee can be obtained on request to its secretary.

This publication does not purport to include all the necessary provisions of a contract. Users are responsible for its correct application.

© The British Standards Institution 2015.
Published by BSI Standards Limited 2015

ISBN 978 0 580 86712 5

ICS 67.060

Compliance with a British Standard cannot confer immunity from legal obligations.

This British Standard was published under the authority of the Standards Policy and Strategy Committee on 31 May 2013.

Amendments/corrigenda issued since publication

Date	Text affected
31 January 2015	This corrigendum renumbers BS ISO 17718:2013 as BS EN ISO 17718:2014

ICS 67.060

English Version

Wholemeal and flour from wheat (*Triticum aestivum* L.) -
Determination of rheological behaviour as a function of mixing
and temperature increase (ISO 17718:2013)

Farine et mouture complète de blé tendre (*Triticum
aestivum* L.) - Détermination du comportement rhéologique
des pâtes en fonction du pétrissage et de l'augmentation de
la température (ISO 17718:2013)

Weizenvollkorn- und Weizenmehl (*Triticum aestivum* L.) -
Bestimmung der rheologischen Eigenschaften als Funktion
von Kneten und Temperaturanstieg (ISO 17718:2013)

This European Standard was approved by CEN on 16 December 2014.

CEN members are bound to comply with the CEN/CENELEC Internal Regulations which stipulate the conditions for giving this European Standard the status of a national standard without any alteration. Up-to-date lists and bibliographical references concerning such national standards may be obtained on application to the CEN-CENELEC Management Centre or to any CEN member.

This European Standard exists in three official versions (English, French, German). A version in any other language made by translation under the responsibility of a CEN member into its own language and notified to the CEN-CENELEC Management Centre has the same status as the official versions.

CEN members are the national standards bodies of Austria, Belgium, Bulgaria, Croatia, Cyprus, Czech Republic, Denmark, Estonia, Finland, Former Yugoslav Republic of Macedonia, France, Germany, Greece, Hungary, Iceland, Ireland, Italy, Latvia, Lithuania, Luxembourg, Malta, Netherlands, Norway, Poland, Portugal, Romania, Slovakia, Slovenia, Spain, Sweden, Switzerland, Turkey and United Kingdom.



EUROPEAN COMMITTEE FOR STANDARDIZATION
COMITÉ EUROPÉEN DE NORMALISATION
EUROPÄISCHES KOMITEE FÜR NORMUNG

CEN-CENELEC Management Centre: Avenue Marnix 17, B-1000 Brussels

Foreword

The text of ISO 17718:2013 has been prepared by Technical Committee ISO/TC 34 "Food products" of the International Organization for Standardization (ISO) and has been taken over as EN ISO 17718:2014 by Technical Committee CEN/TC 338 "Cereal and cereal products" the secretariat of which is held by AFNOR.

This European Standard shall be given the status of a national standard, either by publication of an identical text or by endorsement, at the latest by June 2015, and conflicting national standards shall be withdrawn at the latest by June 2015.

Attention is drawn to the possibility that some of the elements of this document may be the subject of patent rights. CEN [and/or CENELEC] shall not be held responsible for identifying any or all such patent rights.

According to the CEN-CENELEC Internal Regulations, the national standards organizations of the following countries are bound to implement this European Standard: Austria, Belgium, Bulgaria, Croatia, Cyprus, Czech Republic, Denmark, Estonia, Finland, Former Yugoslav Republic of Macedonia, France, Germany, Greece, Hungary, Iceland, Ireland, Italy, Latvia, Lithuania, Luxembourg, Malta, Netherlands, Norway, Poland, Portugal, Romania, Slovakia, Slovenia, Spain, Sweden, Switzerland, Turkey and the United Kingdom.

Endorsement notice

The text of ISO 17718:2013 has been approved by CEN as EN ISO 17718:2014 without any modification.

Contents

	Page	
1	Scope	1
2	Normative references	1
3	Terms and definitions	1
4	Principle	1
5	Reagent	2
6	Equipment	2
7	Sampling	3
8	Procedure	3
	8.1 General.....	3
	8.2 Sample milling.....	3
	8.3 Determination of flour moisture content.....	3
	8.4 Preparation of the device.....	3
	8.5 Preparation of the test.....	3
9	Expression of results	5
10	Precision	5
	10.1 Interlaboratory tests.....	5
	10.2 Repeatability limits, <i>r</i>	5
	10.3 Reproducibility limits, <i>R</i>	6
	10.4 Critical difference, <i>d_C</i>	7
	10.5 Uncertainty, <i>u</i>	7
11	Test report	7
	Annex A (informative) Mixolab®¹) parameters location	9
	Annex B (informative) Results of the interlaboratory test on flour and milled wheat samples	12
	Bibliography	36

Wholemeal and flour from wheat (*Triticum aestivum* L.) — Determination of rheological behaviour as a function of mixing and temperature increase

1 Scope

This International Standard specifies the determination of rheological behaviour as a function of mixing and temperature increase. It is applicable to all wholemeal and flour samples from industrial or laboratory milling of wheat (*Triticum aestivum* L.).

NOTE Wheat can be milled in the laboratory according to the methods described in ISO 27971^[5] or in BIPEA guidance document BY.102.D.9302.^[7]

2 Normative references

The following documents, in whole or in part, are normatively referenced in this document and are indispensable for its application. For dated references, only the edition cited applies. For undated references, the latest edition of the referenced document (including any amendments) applies.

ISO 712, *Cereals and cereal products — Determination of moisture content — Reference method*

3 Terms and definitions

For the purposes of this document, the following terms and definitions apply.

3.1

water absorption

volume of water required to obtain a dough with a maximum consistency of $(1,10 \pm 0,05)$ Nm

Note 1 to entry: Water absorption is expressed in millilitres per 100 g of flour with a moisture content of 14 % mass fraction.

3.2

time T1

time required for the dough to reach the target consistency C1 of $(1,10 \pm 0,05)$ Nm

Note 1 to entry: Development time is expressed in minutes.

3.3

stability

calculated time during which the dough achieves a consistency higher than $C1 - 11 \% \times C1$

4 Principle

Dough behaviour is determined as it is subjected to a combined kneading and temperature treatment during a constant temperature phase, followed by a heating phase, then held at high temperature, and subsequently cooled. Water is added to flour to achieve a maximum dough consistency of $(1,10 \pm 0,05)$ Nm during the first constant temperature phase.

The dough is first kneaded between two mixing arms rotating in opposite directions at 80 r/min, at a starting temperature of 30 °C. The torque that the dough creates between the two mixing arms is recorded. Kneading then continues while temperature is increased to 90 °C at a rate of 4 °C/min. The

temperature is then held at a controlled 90 °C for 15 min. The dough mixer is then cooled at a rate of 4 °C/min to a temperature of 50 °C.

Dough consistency, like temperature, is recorded throughout the test. The results provide information on gluten strength, starch gelatinization and retrogradation, enzyme activity, and all the interactions taking place between dough components throughout the process.

5 Reagent

Use only distilled or demineralized water or water of equivalent purity.

6 Equipment

Usual laboratory apparatus and, in particular, the following.

6.1 Chopin Mixolab®¹⁾ including the following components.

6.1.1 Drive motor, capable of delivering a mixing arm rotation speed of 80 r/min.

6.1.2 Water tank, containing water ([Clause 5](#)) thermostatically maintained at 30 °C.

6.1.3 Dough mixer, comprising a bowl, two hub-flanges, and two detachable mixing arms.

6.1.4 Removable cover, for positioning the water injection nozzle.

6.1.5 Water injection nozzle, fitted with four delivery channels.

6.1.6 Software, for programming the test conditions and measuring and recording the test results.

6.2 Laboratory scale, capable of weighing to ±0,1 g.

6.3 Laboratory mill, hammermill model,²⁾

fitted with a 0,8 mm mesh sieve and able to provide a wholemeal flour of specified homogeneous particle size.

Mill performance should be re-checked at regular intervals on a sample of milled grain. The milled sample shall meet the specifications given in [Table 1](#).

Table 1

Sieve mesh size	Proportion of wheat wholemeal passing through the sieve
µm	%
710	100
500	95 to 100
210 to 200	≤80

1) Chopin Mixolab® is the trade name of a product supplied by Chopin Technologies. This information is given for the convenience of users of this document and does not constitute an endorsement by ISO of the product named. Equivalent products may be used if they can be shown to lead to the same results.

2) LM 3100 and LM 120 mills are examples of suitable products available commercially. This information is given for the convenience of users of this document and does not constitute an endorsement by ISO of these products.

7 Sampling

Sampling is not part of the method specified in this International Standard. A recommended sampling method is given in ISO 24333.^[4]

It is important the laboratory receive a truly representative sample which has not been damaged or changed during transport or storage.

8 Procedure

8.1 General

To implement this International Standard on wholemeal flour requires a milling step.

If the sample is delivered as flour, go to [8.3](#).

8.2 Sample milling

Grind [\(6.3\)](#) 200 g to 300 g of cleaned grains as specified in the mill manufacturer's instructions.

8.3 Determination of flour moisture content

Determine the moisture content of flour or milled sample as specified in ISO 712.

8.4 Preparation of the device

Make sure that the water-injection nozzle is set above the water tank.

Power up the Mixolab^{®1)} [\(6.1\)](#) 30 min ahead of the first test.

Use the level gauge to check there is a sufficient quantity of water ([Clause 5](#)) in the tank [\(6.1.2\)](#).

Make sure the bowl, hub flange, and mixing arms assembly is well connected [\(6.1.3\)](#), and install this dough mixer assembly.

Close the removable cover [\(6.1.4\)](#).

8.5 Preparation of the test

8.5.1 General

There are two steps:

- a) determination of the water absorption of flour or wholemeal;
- b) determination of the rheological characteristics of the flour or wholemeal.

8.5.2 Determination of water absorption

8.5.2.1 Use the program menu [\(6.1.6\)](#) to define the protocol to perform test: Chopin+ for flour and Chopin Wheat+ for wholemeal.

8.5.2.2 Use the program menu [\(6.1.6\)](#) to set the test conditions, specifying flour moisture content [\(8.3\)](#) and setting a 55 % hydration (the baseline 14 % is selected automatically).

8.5.2.3 Use the laboratory scale [\(6.2\)](#) to weigh out the quantity of flour stipulated by the device [\(6.1.6\)](#).

8.5.2.4 Boot the test, and introduce the weighed flour into the dough-mixer (6.1.3).

8.5.2.5 Position the water injection nozzle (6.1.5) in its place above the cover. It is important to wait for the software (6.1.6) prompt before positioning the nozzle.

8.5.2.6 When the curve has reached its peak and a downcurve sign is indicated, stop the test and record the C_{\max} read-out value.

If the maximum torque, C_{\max} , reaches $(1,10 \pm 0,05)$ Nm, allow the curve complete development for 45 min.

8.5.2.7 Remove the injection nozzle from the removable cover (6.1.4) and position it above the water tank (6.1.2).

8.5.2.8 Remove the dough-mixer bowl and mixing arms (6.1.3), and clean.

8.5.2.9 Re-assemble the dough-mixer and reposition it on the Mixolab®.1)

8.5.3 Full test

8.5.3.1 Use the program menu (6.1.6) to define the protocol to perform test: Chopin+ for flour and Chopin Wheat+ for wholemeal.

8.5.3.2 Use the program menu (6.1.6) to set the test conditions, specifying the hydration figure used in the previous test (8.5.2), the sample moisture content determined in 8.3, and the C_{\max} torque obtained in the previous test (8.5.2).

8.5.3.3 Use the laboratory scale (6.2) to weigh out the quantity of flour stipulated by the device (6.1.6).

8.5.3.4 Boot the test, and introduce the weighed flour into the dough-mixer (6.1.3).

8.5.3.5 Position the water-injection nozzle (6.1.5) in its place above the cover. It is important to wait for the software (6.1.6) prompt before positioning the nozzle.

8.5.3.6 Monitor the dough behaviour during the first few minutes of the test.

If the maximum torque, C_{\max} , reaches $(1,10 \pm 0,05)$ Nm, allow the curve complete development for 45 min, if C_{\max} does not reach $(1,10 \pm 0,05)$ Nm, stop the test, record the C_{\max} read-out value, and go back to 8.5.2.6.

8.5.3.7 Remove the injection nozzle from the removable cover (6.1.4) and position it above the water tank (6.1.2).

8.5.3.8 Remove the dough-mixer bowl and mixing arms (6.1.3), and clean.

8.5.4 Parameter recordings

8.5.4.1 Measuring points for water absorption

C_1 is the first maximum consistency of the dough and corresponds to the target consistency that needs to be achieved. It shall be in the range 1,05 Nm to 1,15 Nm.

8.5.4.2 Parameters giving information on dough behaviour

C2 is the minimum consistency obtained during curve development and corresponds to the lowest point on the curve after C1, when the temperature applied to the bowl is on the increase.

C3 is the maximum consistency obtained after starch gelatinization and corresponds to the peak consistency value obtained after C2, or consistency value at the end of 90 °C phase if there is no peak. C3 is related to starch granules swelling under the effect of the heat.

C4 is the minimum consistency obtained after starch gelatinization and corresponds to the drop in consistency after C3 during the kneading period at 90 °C. This drop can only be calculated if it reaches 89 % of the C3 value.

C5 is the final consistency of the dough and corresponds to the dough consistency at the end of the test, after the cooling phase.

Stability corresponds to the calculated time during the dough maintains a consistency higher than $C1 - 11 \% \times C1$.

Time T1 which corresponds to the time needed to reach torque C1.

Temperatures D1, D2, D3, D4, and D5, which correspond to an estimation of dough temperatures at test-point characteristics C1, C2, C3, C4, and C5, respectively.

9 Expression of results

Express the results for torque values C1, C2, C3, C4, and C5 to the nearest 0,01 Nm.

Express stability, Ts, and time T1 to the nearest 0,01 min.

Record dough temperature estimations (D1, D2, D3, D4, and D5) to the nearest 0,1 °C.

See [Figures A.1](#) and [A.2](#).

10 Precision

10.1 Interlaboratory tests

See [Annex B](#). The values derived from this interlaboratory test campaign may not be applicable to other Mixolab®¹⁾ parameters, concentration ranges or wholemeals and flours from grains other than wheat (*Triticum aestivum* L.).

10.2 Repeatability limits, *r*

The repeatability limit is the value below which the absolute difference between two single test results obtained under repeatability conditions may be expected to lie with a probability of 95 %.

$$\text{Water absorption, } \mu_{\text{H}_2\text{O}} : r = 0,29 \times 2,8 = 0,8$$

$$\text{C2: } r = 0,013 \times 2,8 = 0,04$$

$$\text{C3: } r = 0,019 \times 2,8 = 0,05$$

$$\text{C4: } r = 0,029 \times 2,8 = 0,08$$

$$\text{C5: } r = 0,078 \times 2,8 = 0,22$$

$$\text{Stability, Ts: } r = (-0,090\ 2 \times \text{Ts} + 1,276\ 2) \times 2,8$$

$$\text{Time T1: } r = (0,081\ 4 \times \text{T1} + 0,125\ 2) \times 2,8$$

$$\text{D1: } r = 0,567 \times 2,8 = 1,6$$

$$\text{D2: } r = 0,651 \times 2,8 = 1,8$$

$$\text{D3: } r = 0,781 \times 2,8 = 2,2$$

$$\text{D4: } r = 0,767 \times 2,8 = 2,1$$

$$\text{D5: } r = 0,741 \times 2,8 = 2,1$$

10.3 Reproducibility limits, *R*

The reproducibility limit is the value below which the absolute difference between two test results obtained under reproducibility conditions may be expected to lie with a probability of 95 %.

$$\text{Water absorption, } \mu_{\text{H}_2\text{O}} : R = 0,75 \times 2,8 = 2,1$$

$$\text{C2: } R = 0,027 \times 2,8 = 0,08$$

$$\text{C3: } R = 0,076 \times 2,8 = 0,21$$

$$\text{C4: } R = 0,090 \times 2,8 = 0,25$$

$$\text{C5: } R = 0,190 \times 2,8 = 0,53$$

$$\text{Stability, Ts: } R = (-0,151\ 3 \times \text{Ts} + 2,201\ 4) \times 2,8$$

$$\text{Time T1: } R = (0,171\ 6 \times \text{T1} + 0,114\ 7) \times 2,8$$

$$\text{D1: } R = 0,970 \times 2,8 = 2,7$$

$$\text{D2: } R = 1,585 \times 2,8 = 4,4$$

$$\text{D3: } R = 1,691 \times 2,8 = 4,7$$

$$\text{D4: } R = (-0,3798 \times \text{D4} + 33,649) \times 2,8$$

$$\text{D5: } R = 2,724 \times 2,8 = 7,6$$

10.4 Critical difference, d_C

10.4.1 General

The critical difference is the deviation between two values obtained from two test results under repeatability conditions.

10.4.2 Comparison of two measurement groups in the same laboratory

The critical difference for comparing two average values obtained from two test results in the same laboratory, under repeatability conditions is given by:

$$d_{C,r} = 2,8 s_r \sqrt{\frac{1}{2n_1} + \frac{1}{2n_2}} = 2,8 s_r \sqrt{\frac{1}{2}} = 1,98 s_r$$

where

s_r is the repeatability standard deviation;

n_1, n_2 are the number of test results for each of the average values — here, n_1 and n_2 equal 2.

10.4.3 Comparison of two measurement groups in two different laboratories

The critical difference for comparing two values obtained from two test results in two different laboratories, under repeatability conditions is given by:

$$d_{C,R} = 2,8 \sqrt{s_R^2 - s_r^2 \left(1 - \frac{1}{2n_1} - \frac{1}{2n_2}\right)} = 2,8 \sqrt{s_R^2 - 0,5 s_r^2}$$

where

s_r is the repeatability standard deviation;

s_R is the reproducibility standard deviation;

n_1, n_2 are the number of test results for each of the average values — here, n_1 and n_2 equal 2.

10.5 Uncertainty, u

Uncertainty, u , is a parameter characterizing the dispersion of values that may reasonably be attributed to the result. The uncertainty figure is established based on a statistical distribution of results derived from the interlaboratory test, and is characterized by the experimental standard deviation.

For each parameter, uncertainty can be considered as $\pm 2s_R$, where s_R is the standard deviation of reproducibility stated in this International Standard.

11 Test report

The test report shall contain at least the following information:

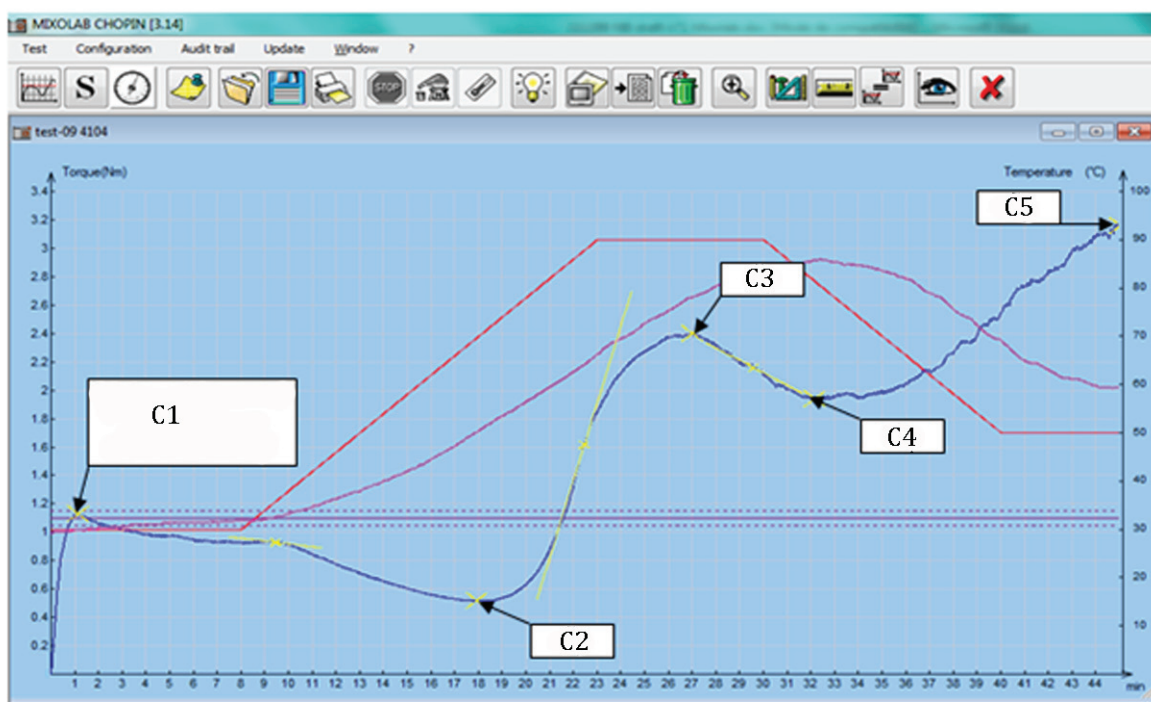
- a) all information necessary for the complete identification of the sample;
- b) the sampling method used, if known;
- c) the test method used, with reference to this International Standard (ISO 17718:2013);

- d) all operating details not specified in this International Standard, or regarded as optional, together with details of any incidents which may have influenced the test result(s);
- e) the test result(s) obtained;
- f) if the repeatability has been checked, the final quoted result obtained.

Annex A (informative)

Mixolab®¹) parameters location

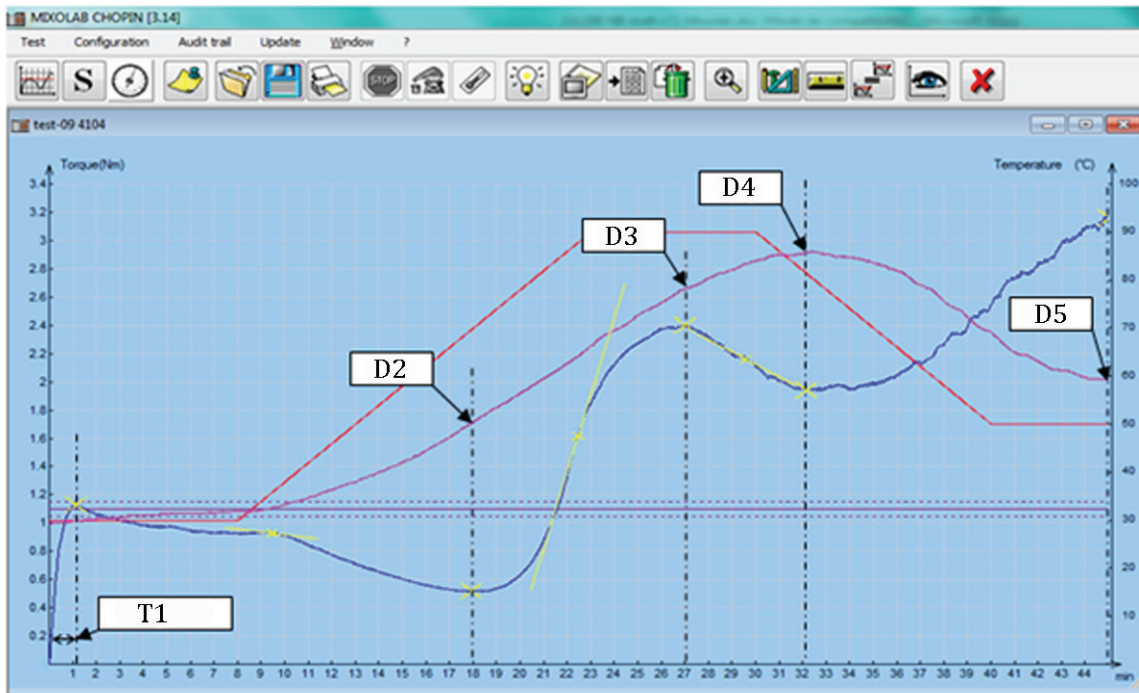
As an example, [Figures A.1](#) to [A.3](#) give information about the location of the Mixolab®¹) parameters measured. At point C1 in [Figures A.1](#) to [A.3](#), the angled (red) line plots the bowl temperature, in degrees Celsius, the ascending sinuous (pink) curve the dough temperature, in degrees Celsius, the descending sinuous (blue) curve the smoothed measured torque, in newton metres. The horizontal (purple) lines indicate the target consistency area ($1,10 \pm 0,05$) Nm, which shall be achieved during the water absorption determination.



Key

- C1 first maximum consistency of the dough (used for water absorption determination)
- C2 minimum consistency obtained during curve development
- C3 maximum consistency obtained after starch gelatinization
- C4 minimum consistency obtained after starch gelatinization
- C5 final consistency of the dough

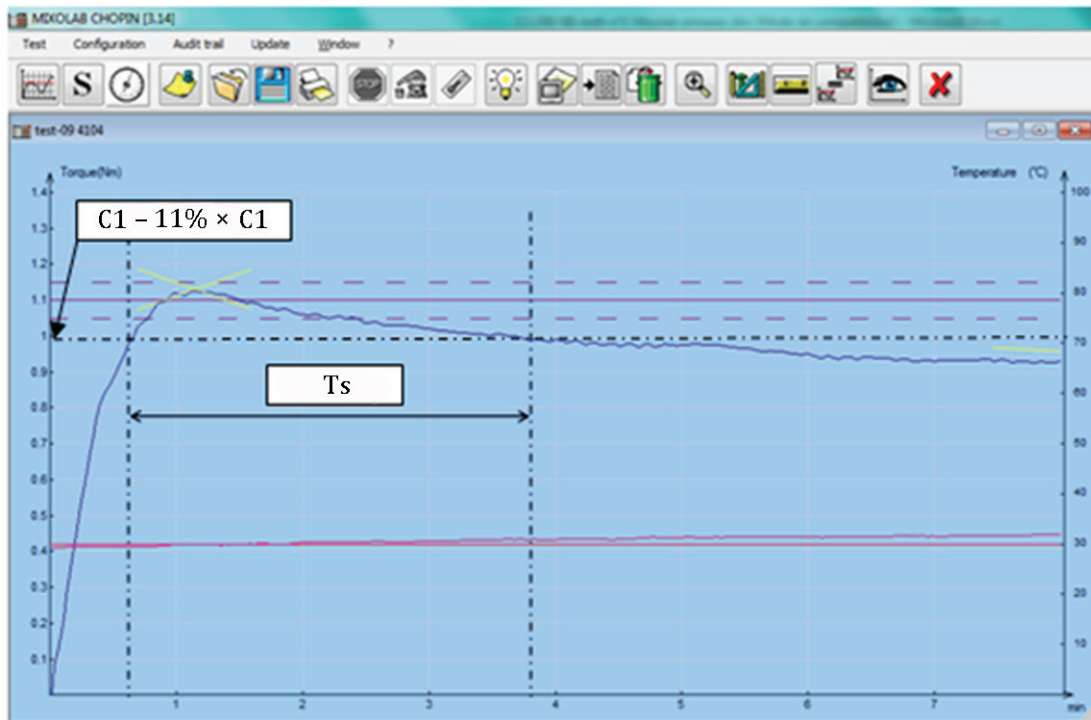
Figure A.1 — Location of torque-related parameters of interest on the Mixolab®¹) curve



Key

- D2 estimation of dough temperature at consistency C2
- D3 estimation of dough temperature at consistency C3
- D4 estimation of dough temperature at consistency C4
- D5 estimation of dough temperature at consistency C5
- T1 time required for the dough to reach the target consistency C1

Figure A.2 — Location of time T1 and dough temperature estimations on the Mixolab®1) curve



Key

C1-11 % × C1 consistency at which stability is reached

Ts time at which stability is reached

Figure A.3 — Location of stability on the Mixolab®¹) curve (expanded view of the first 8 min)

Annex B (informative)

Results of the interlaboratory test on flour and milled wheat samples

The interlaboratory test was organized in 2006-05 by Chopin Technologies and involved 13 internationally recognized laboratories.

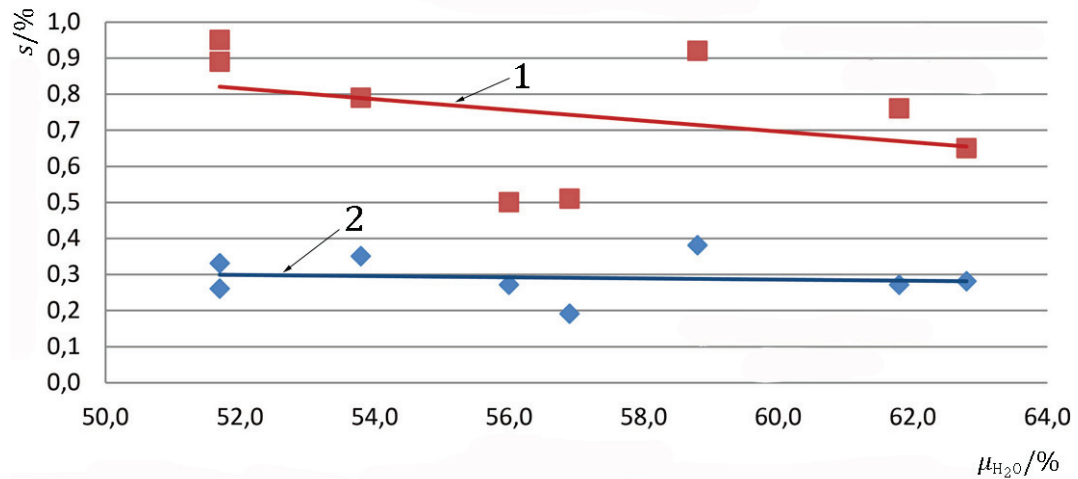
Testing was conducted according to the recommendations set out in ISO 5725-2,^[1] ISO 5725-3,^[2] and ISO 5725-6,^[3] on 12 wheat samples and 10 flour samples selected to cover a broad range of values for each of the test parameters measured. The results of statistical analysis are given in [Tables B.1](#) to [B.12](#) and [Figures B.1](#) to [B.12](#).

Flours produced from the test wheat wholemeal were obtained from a single laboratory. Consequently, milling process variability is not accounted for in the reproducibility calculations. Two of the 12 selected wholewheat samples were double blind: samples B3 and B7, and samples B9 and B12.

All tests were conducted under repeatability conditions, except for water absorption tests which the laboratories conducted according to the operating procedures set out in [8.5.2](#). The precision values for this parameter are taken from NF V03-765^[6] and are given here for illustrative purposes only. See [Table B.1](#) and [Figure B.1](#).

Table B.1 — Statistical results for water absorption

Parameter	Flour							
	G	H	F	D	E	B	C	A
Number of laboratories or tests	12	12	11	10	10	12	11	10
Mean value, μ_{H_2O} , %	51,7	51,7	53,8	56,0	56,9	58,8	61,8	62,8
Repeatability standard deviation, s_r, %	0,26	0,33	0,35	0,27	0,19	0,38	0,27	0,28
Coefficient of variation, $C_{V,r} (s_r / \mu_{H_2O},)$ %	0,5	0,6	0,7	0,5	0,3	0,6	0,4	0,4
Repeatability limit, $r (2,8 \times s_r)$	0,7	0,9	1,0	0,7	0,5	1,1	0,7	0,8
Reproducibility standard deviation, s_R, %	0,89	0,95	0,79	0,5	0,51	0,92	0,76	0,65
Coefficient of variation, $C_{V,R} (s_R / \mu_{H_2O},)$ %	1,7	1,8	1,5	0,9	0,9	1,6	1,2	1,0
Reproducibility limit, $R (2,8 \times s_R)$	2,5	2,6	2,2	1,4	1,4	2,5	2,1	1,8



Key

- | | | | |
|--------------|-----------------------|---|---|
| s | standard deviation | 1 | standard deviation of reproducibility,
$s_R = -0,014\ 9\ \mu_{H_2O}, + 1,593\ 4\ R^2 = 0,128\ 4$ |
| μ_{H_2O} | mean water absorption | 2 | standard deviation of repeatability,
$s_r = -0,001\ 6\ \mu_{H_2O}, + 0,382\ 6\ R^2 = 0,013\ 1$ |

The graph shows that the repeatability and reproducibility standard deviations remain constant, regardless of water absorption.

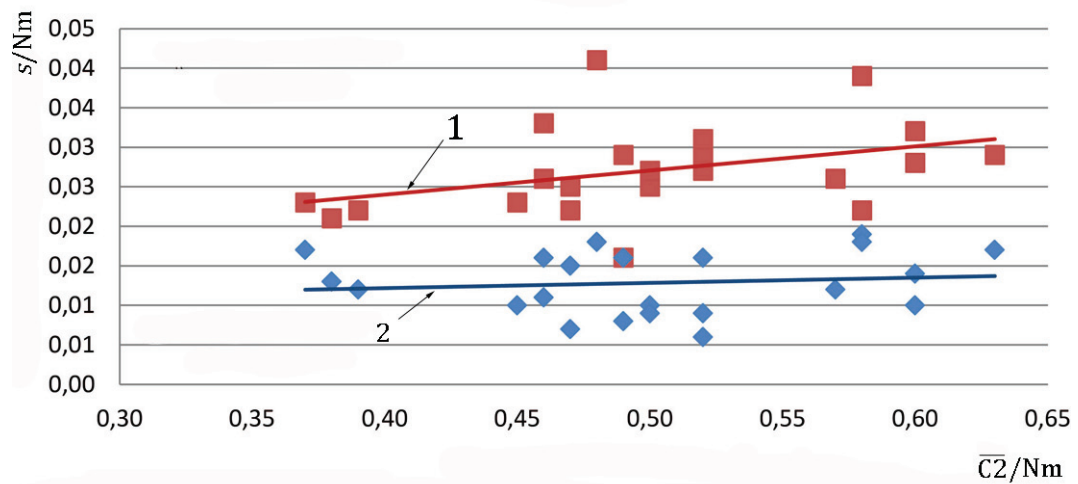
$$r = 0,29 \times 2,8 = 0,8$$

$$R = 0,75 \times 2,8 = 2,1$$

Figure B.1 — Relationship between precision standard deviations and mean water absorption

Table B.2 — Statistical results for C2

Parameter	Common wheat (B) and flour (F) sample										
	F11	F6	F5	B6	B11	B13	F8	B3	B7	F9	B5
Number of laboratories or tests	11	12	12	11	11	11	12	11	11	12	11
Mean value, $\bar{C2}$, Nm	0,37	0,38	0,39	0,45	0,46	0,46	0,47	0,47	0,48	0,49	0,49
Repeatability standard deviation, s_r , Nm	0,017	0,013	0,012	0,01	0,011	0,016	0,007	0,015	0,018	0,008	0,016
Coefficient of variation, $C_{V,r} (s_r/\bar{C2})$ %	5	3	3	2	2	3	1	3	4	2	3
Repeatability limit, $r (2,8 \times s_r)$	0,05	0,04	0,03	0,03	0,03	0,04	0,02	0,04	0,05	0,02	0,04
Reproducibility standard deviation, s_R , Nm	0,023	0,021	0,022	0,023	0,026	0,033	0,022	0,025	0,041	0,016	0,029
Coefficient of variation, $C_{V,R} (s_R/\bar{C2})$ %	6	6	6	5	6	7	5	5	9	3	6
Reproducibility limit, $R (2,8 \times s_R)$	0,06	0,06	0,06	0,06	0,07	0,09	0,06	0,07	0,11	0,04	0,08
Parameter	Common wheat (B) and flour (F) sample										
	F7	F4	B2	F10	B8	F12	F3	B9	B12	B10	B4
Number of laboratories or tests	12	12	11	12	10	12	12	11	11	11	11
Mean value, $\bar{C2}$, Nm	0,50	0,50	0,52	0,52	0,52	0,57	0,58	0,58	0,60	0,60	0,63
Repeatability standard deviation, s_r , Nm	0,009	0,01	0,006	0,009	0,016	0,012	0,018	0,019	0,01	0,014	0,017
Coefficient of variation, $C_{V,r} (s_r/\bar{C2})$ %	2	2	1	2	3	2	3	3	2	2	3
Repeatability limit, $r (2,8 \times s_r)$	0,02	0,03	0,02	0,02	0,04	0,03	0,05	0,05	0,03	0,04	0,05
Reproducibility standard deviation, s_R , Nm	0,027	0,025	0,029	0,027	0,031	0,026	0,022	0,039	0,028	0,032	0,029
Coefficient of variation, $C_{V,R} (s_R/\bar{C2})$ %	5	5	6	5	6	5	4	7	5	5	5
Reproducibility limit, $R (2,8 \times s_R)$	0,07	0,07	0,08	0,07	0,09	0,07	0,06	0,11	0,08	0,09	0,08



Key

s	standard deviation	1	standard deviation of reproducibility, $s_R = 0,030\ 6 \overline{C2} + 0,011\ 8 \quad R^2 = 0,142\ 3$
$\overline{C2}$	mean minimum consistency obtained during curve development	2	standard deviation of repeatability, $s_r = 0,006\ 7 \overline{C2} + 0,009\ 5 \quad R^2 = 0,014\ 6$

The graph shows that the repeatability and reproducibility standard deviations remain constant, regardless of mean C2 level.

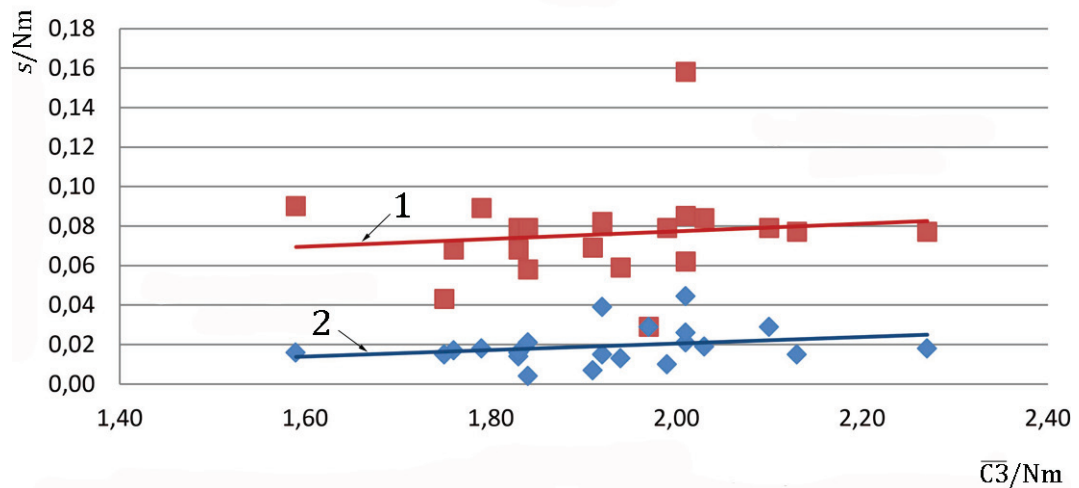
$$r = 0,013 \times 2,8 = 0,04$$

$$R = 0,027 \times 2,8 = 0,08$$

Figure B.2 — Relationship between precision standard deviation and mean C2

Table B.3 — Statistical results for C3

Parameter	Common wheat (B) and flour (F) sample										
	B11	F9	B3	B7	B5	B13	B6	B10	F10	F3	F12
Number of laboratories or tests	11	12	11	11	11	11	11	4	3	6	12
Mean value, $\overline{C3}$, Nm	1,59	1,75	1,76	1,79	1,83	1,84	1,84	1,84	1,91	1,92	1,92
Repeatability standard deviation, s_r , Nm	0,016	0,015	0,017	0,018	0,014	0,016	0,021	0,004	0,007	0,039	0,015
Coefficient of variation, $C_{V,r} (s_r/\overline{C3})$ %	1	1	1	1	1	1	1	0	0	2	1
Repeatability limit, $r (2,8 \times s_r)$	0,04	0,04	0,05	0,05	0,04	0,04	0,06	0,01	0,02	0,11	0,04
Reproducibility standard deviation, s_R , Nm	0,09	0,043	0,068	0,089	0,068	0,079	0,079	0,058	0,069	0,08	0,082
Coefficient of variation, $C_{V,R} (s_R/\overline{C3})$ %	6	2	4	5	4	4	4	3	4	4	4
Reproducibility limit, $R (2,8 \times s_R)$	0,25	0,12	0,19	0,25	0,19	0,22	0,22	0,16	,019	0,22	0,23
Parameter	Common wheat (B) and flour (F) sample										
	F7	F5	B2	B4	B8	F6	F4	B9	B12		
Number of laboratories or tests	11	6	11	10	9	4	12	11	11		
Mean value, $\overline{C3}$, Nm	1,94	1,97	1,99	2,01	2,01	2,01	2,03	2,10	2,13		
Repeatability standard deviation, s_r , Nm	0,013	0,029	0,01	0,045	0,021	0,026	0,019	0,029	0,015		
Coefficient of variation, $C_{V,r} (s_r/\overline{C3})$ %	1	1	1	2	1	1	1	1	1		
Repeatability limit, $r (2,8 \times s_r)$	0,04	0,08	0,03	0,12	0,06	0,07	0,05	0,08	0,04		
Reproducibility standard deviation, s_R , Nm	0,059	0,029	0,079	0,085	0,158	0,062	0,084	0,079	0,077		
Coefficient of variation, $C_{V,R} (s_R/\overline{C3})$ %	3	1	4	4	8	3	4	4	4		
Reproducibility limit, $R (2,8 \times s_R)$	0,16	0,08	0,22	0,24	0,44	0,17	0,23	0,22	0,21		



Key

s standard deviation

1 standard deviation of reproducibility,
 $s_R = 0,019\ 3 \bar{C}_3 + 0,038\ 7 \quad R^2 = 0,014\ 6$

\bar{C}_3 mean maximum consistency obtained after starch2 gelatinization

2 standard deviation of repeatability,
 $s_r = 0,016\ 4 \bar{C}_3 - 0,012\ 3 \quad R^2 = 0,064\ 6$

The graph shows that the repeatability and reproducibility standard deviations remain constant, regardless of mean C3 level.

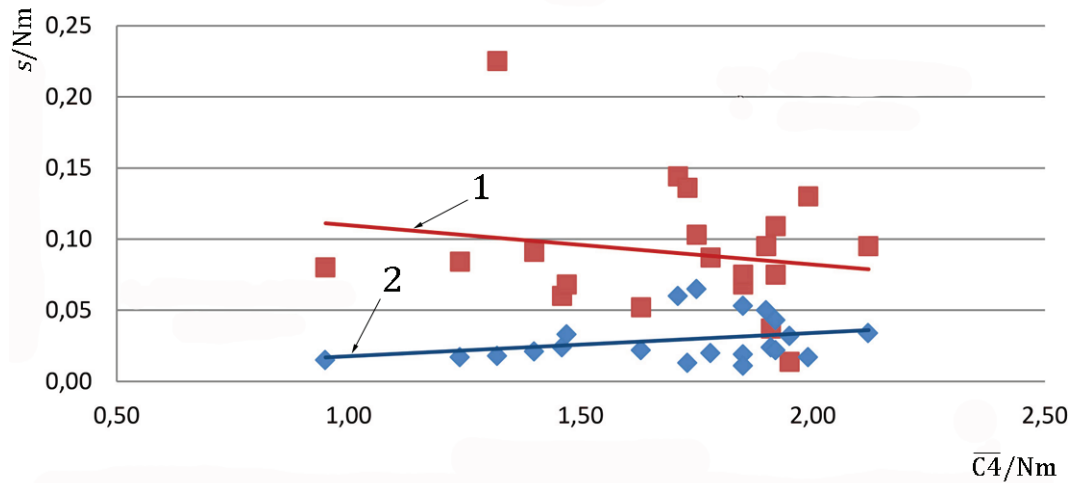
$$r = 0,019 \times 2,8 = 0,05$$

$$R = 0,076 \times 2,8 = 0,21$$

Figure B.3 — Relationship between precision standard deviation and mean C3

Table B.4 — Statistical results for C4

Parameter	Common wheat (B) and flour (F) sample										
	B11	B3	B7	B5	B13	B6	F9	B8	B10	B12	B2
Number of laboratories or tests	11	11	11	11	11	11	12	9	4	12	11
Mean value, $\overline{C4}$, Nm	0,95	1,24	1,32	1,40	1,46	1,47	1,63	1,71	1,73	1,75	1,78
Repeatability standard deviation, s_r , Nm	0,015	0,017	0,018	0,021	0,024	0,033	0,022	0,06	0,013	0,065	0,02
Coefficient of variation, $C_{V,r} (s_r/\overline{C4})$ %	2	1	1	2	2	2	1	4	1	4	1
Repeatability limit, $r (2,8 \times s_r)$	0,04	0,05	0,05	0,06	0,07	0,09	0,06	0,17	0,04	0,18	0,06
Reproducibility standard deviation, s_R , Nm	0,08	0,084	0,225	0,091	0,06	0,068	0,052	0,144	0,136	0,103	0,087
Coefficient of variation, $C_{V,R} (s_R/\overline{C4})$ %	8	7	17	7	4	5	3	8	8	6	5
Reproducibility limit, $R (2,8 \times s_R)$	0,22	0,23	0,62	0,25	0,17	0,19	0,14	0,40	0,38	0,29	0,24
Parameter	Common wheat (B) and flour (F) sample										
	F3	F7	F10	F4	F5	B4	F6	B9	B12		
Number of laboratories or tests	6	11	3	12	6	10	5	11	11		
Mean value, $\overline{C4}$, Nm	1,85	1,85	1,85	1,90	1,91	1,92	1,92	1,95	1,99		
Repeatability standard deviation, s_r , Nm	0,053	0,019	0,011	0,05	0,024	0,043	0,022	0,032	0,017		
Coefficient of variation, $C_{V,r} (s_r/\overline{C4})$ %	3	1	1	3	1	2	1	2	1		
Repeatability limit, $r (2,8 \times s_r)$	0,15	0,05	0,03	0,14	0,07	0,12	0,06	0,09	0,05		
Reproducibility standard deviation, s_R , Nm	0,072	0,068	0,075	0,095	0,037	0,075	0,109	0,014	0,13		
Coefficient of variation, $C_{V,R} (s_R/\overline{C4})$ %	4	4	4	5	2	4	6	1	7		
Reproducibility limit, $R (2,8 \times s_R)$	0,20	0,19	0,21	0,26	0,10	0,21	0,30	0,04	0,36		



Key

s standard deviation

1 standard deviation of reproducibility,
 $s_R = -0,027 6 \bar{C4} + 0,137 3 \quad R^2 = 0,033 8$

$\bar{C4}$ mean minimum consistency obtained after starch 2 gelatinization

2 standard deviation of repeatability,
 $s_r = 0,016 3 \bar{C4} + 0,001 5 \quad R^2 = 0,088 5$

The graph shows that the repeatability and reproducibility standard deviations remain constant, regardless of mean C4 level.

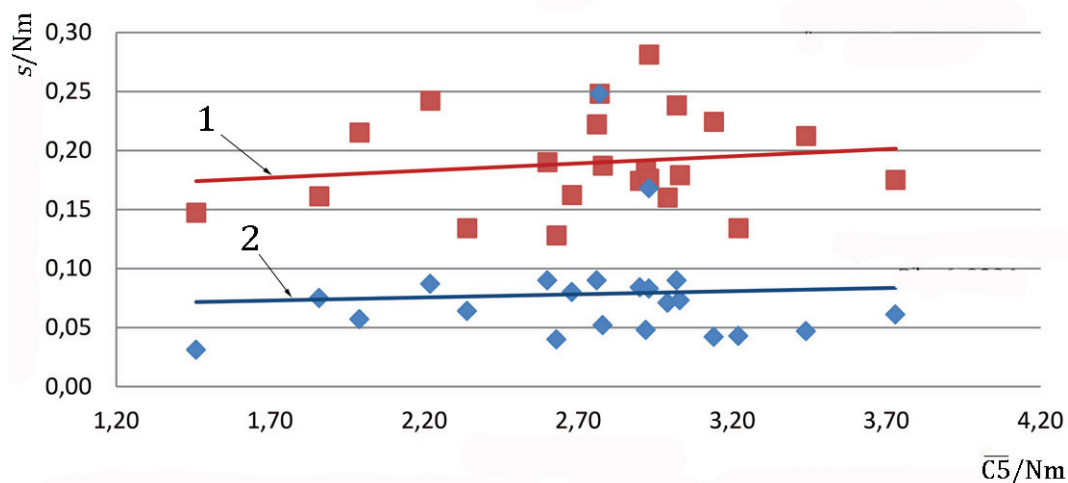
$$r = 0,029 \times 2,8 = 0,08$$

$$R = 0,090 \times 2,8 = 0,25$$

Figure B.4 — Relationship between precision standard deviation and mean C4

Table B.5 — Statistical results for C5

Parameter	Common wheat (B) and flour (F) sample										
	B11	B3	B7	B5	F9	F4	B2	F5	F12	F3	F6
Number of laboratories or tests	11	11	11	11	12	12	11	12	12	12	12
Mean value, $\overline{C5}$, Nm	1,46	1,86	1,99	2,22	2,34	2,60	2,63	2,68	2,76	2,77	2,78
Repeatability standard deviation, s_r , Nm	0,031	0,075	0,057	0,087	0,064	0,09	0,04	0,08	0,09	0,248	0,052
Coefficient of variation, $C_{V,r} (s_r/\overline{C5})$ %	2	4	3	4	3	3	2	3	3	9	2
Repeatability limit, $r (2,8 \times s_r)$	0,09	0,21	0,16	0,24	0,18	0,25	0,11	0,22	0,25	0,69	0,14
Reproducibility standard deviation, s_R , Nm	0,147	0,161	0,215	0,242	0,134	0,19	0,128	0,162	0,222	0,248	0,187
Coefficient of variation, $C_{V,R} (s_R/\overline{C5})$ %	10	9	11	11	6	7	5	6	8	9	7
Reproducibility limit, $R (2,8 \times s_R)$	0,41	0,45	0,60	0,67	0,37	0,53	0,35	0,45	0,61	0,69	0,52
Parameter	Common wheat (B) and flour (F) sample										
	F10	B9	B13	F11	B12	B6	B4	B10	B8	F8	F7
Number of laboratories or tests	12	11	11	11	11	11	11	11	10	12	12
Mean value, $\overline{C5}$, Nm	2,90	2,92	2,93	2,93	2,99	3,02	3,03	3,14	3,22	3,44	3,73
Repeatability standard deviation, s_r , Nm	0,084	0,048	0,17	0,083	0,071	0,09	0,073	0,042	0,043	0,047	0,061
Coefficient of variation, $C_{V,r} (s_r/\overline{C5})$ %	3	2	6	3	2	3	2	1	1	1	2
Repeatability limit, $r (2,8 \times s_r)$	0,23	0,13	0,47	0,23	0,20	0,25	0,20	0,12	0,12	0,13	0,17
Reproducibility standard deviation, s_R , Nm	0,174	0,183	0,28	0,176	0,16	0,238	0,179	0,224	0,134	0,212	0,175
Coefficient of variation, $C_{V,R} (s_R/\overline{C5})$ %	6	6	10	6	5	8	6	7	4	6	5
Reproducibility limit, $R (2,8 \times s_R)$	0,48	0,51	0,78	0,49	0,44	0,66	0,50	0,62	0,37	0,59	0,48



Key

s standard deviation

1 standard deviation of reproducibility,
 $s_R = 0,012\ 2\ \bar{C}_5 + 0,156\ 3\ R^2 = 0,023\ 7$

\bar{C}_5 mean final consistency of the dough

2 standard deviation of repeatability,
 $s_r = 0,005\ 3\ \bar{C}_5 + 0,063\ 7\ R^2 = 0,003\ 4$

The graph shows that the repeatability and reproducibility standard deviations remain constant, regardless of mean C5 level.

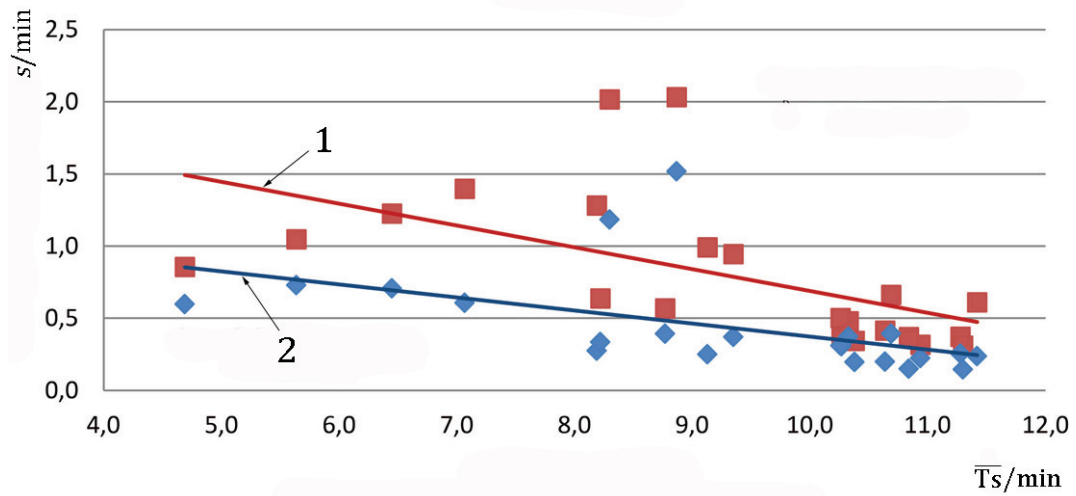
$$r = 0,078 \times 2,8 = 0,22$$

$$R = 0,190 \times 2,8 = 0,53$$

Figure B.5 — Relationship between precision standard deviation and mean C5

Table B.6 — Statistical results for stability

Parameter	Common wheat (B) and flour (F) sample										
	F11	F6	F8	F5	B11	B5	B6	B8	B13	F10	F4
Number of laboratories or tests	11	12	12	12	11	11	11	10	11	12	12
Mean value, $\overline{T_s}$, min	4,69	5,64	6,45	7,07	8,19	8,22	8,30	8,77	8,87	9,13	9,35
Repeatability standard deviation, s_r , min	0,597	0,729	0,708	0,607	0,275	0,334	1,184	0,393	1,519	0,25	0,371
Coefficient of variation, $C_{V,r} (s_r/\overline{T_s})$ %	13	13	11	9	3	4	14	4	17	3	4
Repeatability limit, $r (2,8 \times s_r)$	1,65	2,02	1,96	1,68	0,76	0,93	3,28	1,09	4,21	0,69	1,03
Reproducibility standard deviation, s_R , min	0,854	1,045	1,223	1,396	1,28	0,636	2,015	0,566	2,031	0,991	0,944
Coefficient of variation, $C_{V,R} (s_R/\overline{T_s})$ %	18	19	19	20	16	8	24	6	23	11	10
Reproducibility limit, $R (2,8 \times s_R)$	2,37	2,89	3,39	3,87	3,55	1,76	5,58	1,57	5,63	2,75	2,61
Parameter	Common wheat (B) and flour (F) sample										
	F3	B3	B2	B7	F12	F7	F9	B10	B9	B12	B4
Number of laboratories or tests	12	11	11	11	12	12	12	11	11	11	11
Mean value, $\overline{T_s}$, min	10,26	10,27	10,33	10,38	10,64	10,69	10,84	10,94	11,30	11,30	11,42
Repeatability standard deviation, s_r , min	0,31	0,305	0,372	0,197	0,198	0,393	0,151	0,223	0,25	0,146	0,238
Coefficient of variation, $C_{V,r} (s_r/\overline{T_s})$ %	3	3	4	2	2	4	1	2	2	1	2
Repeatability limit, $r (2,8 \times s_r)$	0,86	0,84	1,03	0,55	0,55	1,09	0,42	0,62	0,70	0,40	0,66
Reproducibility standard deviation, s_R , min	0,5	0,363	0,477	0,342	0,413	0,661	0,369	0,315	0,37	0,309	0,608
Coefficient of variation, $C_{V,R} (s_R/\overline{T_s})$ %	5	4	5	3	4	6	3	3	3	3	5
Reproducibility limit, $R (2,8 \times s_R)$	1,39	1,01	1,32	0,95	1,14	1,83	1,02	0,87	1,02	0,86	1,68



Key

s standard deviation

\bar{T}_s mean stability

1 standard deviation of reproducibility,
 $s_R = -0,151\ 3 \bar{T}_s + 2,201\ 4 \quad R^2 = 0,313\ 8$

2 standard deviation of repeatability,
 $s_r = -0,090\ 2 \bar{T}_s + 1,276\ 2 \quad R^2 = 0,254\ 4$

The graph shows that the repeatability and reproducibility standard deviations are inversely proportional to the mean stability.

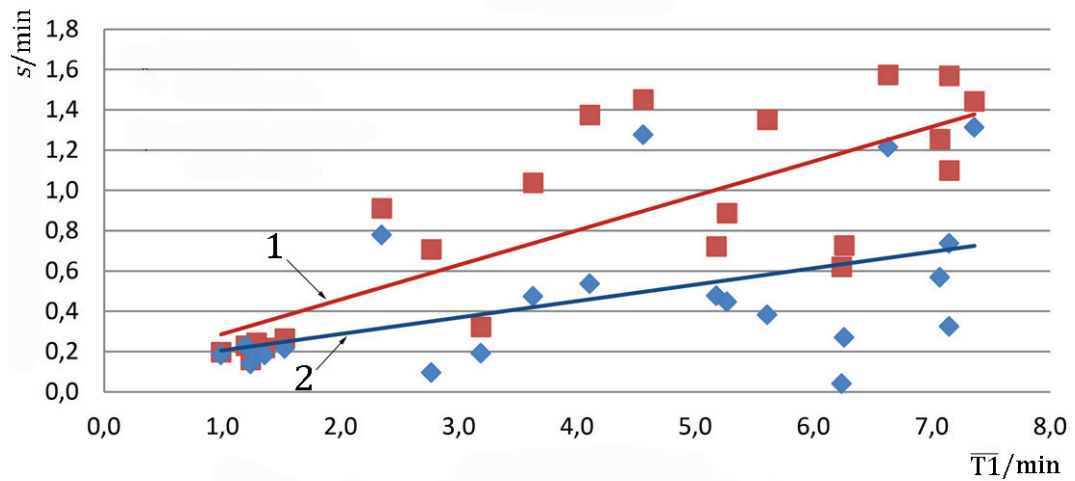
$$r = (-0,090\ 2 \times \bar{T}_s + 1,276\ 2) \times 2,8$$

$$R = (-0,151\ 3 \times \bar{T}_s + 2,201\ 4) \times 2,8$$

Figure B.6 — Relationship between precision standard deviation and mean stability

Table B.7 — Statistical results for time T1

Parameter	Common wheat (B) and flour (F) sample										
	F8	F6	F5	F11	F4	F3	B11	B13	B6	B8	B10
Number of laboratories or tests	12	12	12	11	12	12	11	11	11	10	11
Mean value, $\overline{T1}$, min	0,99	1,20	1,24	1,29	1,36	1,53	2,35	2,77	3,19	3,63	4,11
Repeatability standard deviation, s_r , min	0,184	0,229	0,139	0,177	0,184	0,216	0,778	0,096	0,192	0,474	0,536
Coefficient of variation, $C_{V,r} (s_r/\overline{T1}) \%$	19	19	11	14	14	14	33	3	6	13	13
Repeatability limit, $r (2,8 \times s_r)$	0,51	0,63	0,39	0,49	0,51	0,60	2,16	0,27	0,53	1,31	1,48
Reproducibility standard deviation, s_R , min	0,197	0,229	0,158	0,242	0,217	0,264	0,91	0,706	0,322	1,036	1,374
Coefficient of variation, $C_{V,R} (s_R/\overline{T1}) \%$	20	19	13	19	16	17	39	25	10	29	33
Reproducibility limit, $R (2,8 \times s_R)$	0,55	0,63	0,44	0,67	0,60	0,73	2,52	1,96	0,89	2,87	3,81
Parameter	Common wheat (B) and flour (F) sample										
	B4	B3	B7	B5	B2	F12	F7	F10	B9	B12	F9
Number of laboratories or tests	11	11	11	11	11	12	12	12	11	11	12
Mean value, $\overline{T1}$, min	4,56	5,18	5,27	5,61	6,24	6,26	6,63	7,07	7,15	7,15	7,36
Repeatability standard deviation, s_r , min	1,276	0,48	0,45	0,38	0,04	0,27	1,22	0,57	0,74	0,33	1,31
Coefficient of variation, $C_{V,r} (s_r/\overline{T1}) \%$	28	9	8	7	1	4	18	8	10	5	18
Repeatability limit, $r (2,8 \times s_r)$	3,53	1,32	1,24	1,06	0,11	0,75	3,37	1,58	2,04	0,90	3,63
Reproducibility standard deviation, s_R , min	1,45	0,72	0,89	1,35	0,62	0,73	1,57	1,25	1,1	1,57	1,44
Coefficient of variation, $C_{V,R} (s_R/\overline{T1}) \%$	32	14	17	24	10	12	24	18	15	22	20
Reproducibility limit, $R (2,8 \times s_R)$	4,02	1,99	2,45	3,74	1,72	2,01	4,35	3,47	3,04	4,34	3,99



Key

s standard deviation

1 standard deviation of reproducibility,
 $s_R = 0,171\ 6 \bar{T}_1 + 0,114\ 7 \quad R^2 = 0,624\ 5$

\bar{T}_1 mean time

2 standard deviation of repeatability,
 $s_r = 0,081\ 4 \bar{T}_1 + 0,125\ 2 \quad R^2 = 0,245\ 2$

The graph shows that the repeatability and reproducibility standard deviations are proportional to the mean time, T_1 .

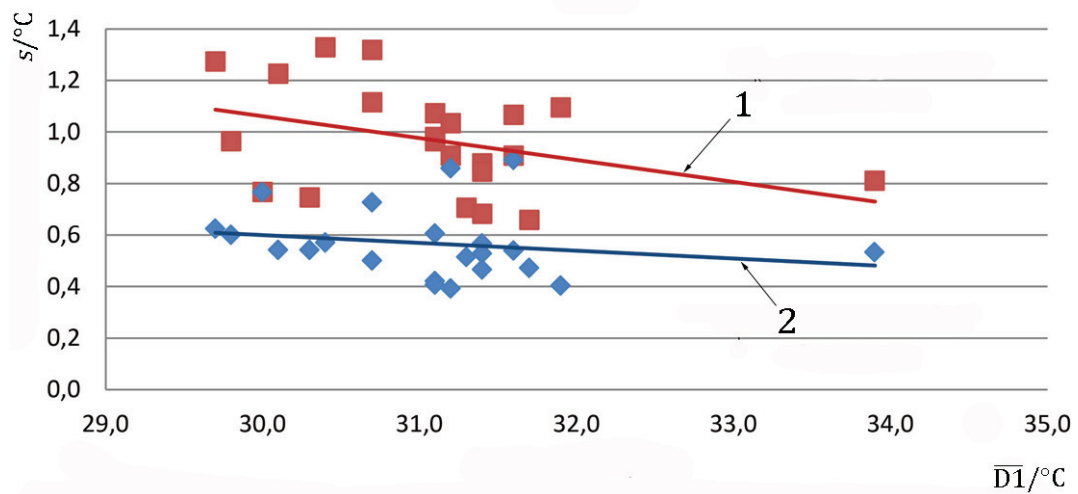
$$r = (0,081\ 4 \times \bar{T}_1 + 0,125\ 2) \times 2,8$$

$$R = (0,171\ 6 \times \bar{T}_1 + 0,114\ 7) \times 2,8$$

Figure B.7 — Relationship between precision standard deviation and mean time, T_1

Table B.8 — Statistical results for D1

Parameter	Common wheat (B) and flour (F) sample										
	F7	F5	F11	F8	F3	F6	B11	F4	B4	B10	B13
Number of laboratories or tests	12	12	11	12	12	12	11	12	11	11	11
Mean value, $\overline{D1}$, °C	29,7	29,8	30,0	30,1	30,3	30,4	30,7	30,7	31,1	31,1	31,1
Repeatability standard deviation, s_r , °C	0,624	0,601	0,766	0,542	0,542	0,571	0,727	0,501	0,421	0,605	0,407
Coefficient of variation, $C_{V,r}$ ($s_r/\overline{D1}$) %	2	2	3	2	2	2	2	2	1	2	1
Repeatability limit, r ($2,8 \times s_r$)	1,73	1,66	2,12	1,50	1,50	1,58	2,01	1,39	1,17	1,68	1,13
Reproducibility standard deviation, s_R , °C	1,273	0,964	0,766	1,225	0,745	1,328	1,318	1,115	0,964	0,98	1,072
Coefficient of variation, $C_{V,R}$ ($s_R/\overline{D1}$) %	4	3	3	4	2	4	4	4	3	3	3
Reproducibility limit, R ($2,8 \times s_R$)	3,53	2,67	2,12	3,39	2,06	3,68	3,65	3,09	3,67	2,71	2,97
Parameter	Common wheat (B) and flour (F) sample										
	B8	F9	B3	B5	B7	F12	B9	B10	B2	B12	B6
Number of laboratories or tests	10	12	11	11	11	12	11	12	11	11	11
Mean value, $\overline{D1}$, °C	31,2	31,2	31,3	31,4	31,4	31,4	31,6	31,6	31,7	31,9	33,9
Repeatability standard deviation, s_r , °C	0,392	0,86	0,51	0,466	0,567	0,528	0,891	0,539	0,472	0,404	0,533
Coefficient of variation, $C_{V,r}$ ($s_r/\overline{D1}$) %	1	3	2	1	2	2	3	2	1	1	2
Repeatability limit, r ($2,8 \times s_r$)	1,09	2,38	1,42	1,29	1,57	1,46	2,47	1,49	1,31	1,12	1,48
Reproducibility standard deviation, s_R , °C	0,908	1,03	0,71	0,878	0,682	0,845	1,066	0,907	0,658	1,094	0,81
Coefficient of variation, $C_{V,R}$ ($s_R/\overline{D1}$) %	3	3	2	3	2	3	3	3	2	3	2
Reproducibility limit, R ($2,8 \times s_R$)	2,52	2,86	1,95	2,43	1,89	2,34	2,95	2,51	1,82	3,03	2,24



Key

s standard deviation

$\overline{D1}$ mean temperature corresponding to C1

1 standard deviation of reproducibility,
 $s_R = -0,084\ 8\ \overline{D1} + 3,605\ 3 \quad R^2 = 0,140\ 8$

2 standard deviation of repeatability,
 $s_r = -0,030\ 3\ \overline{D1} + 1,508\ 1 \quad R^2 = 0,039\ 3$

The graph shows that the repeatability and reproducibility standard deviations remain constant, regardless of mean D1 level.

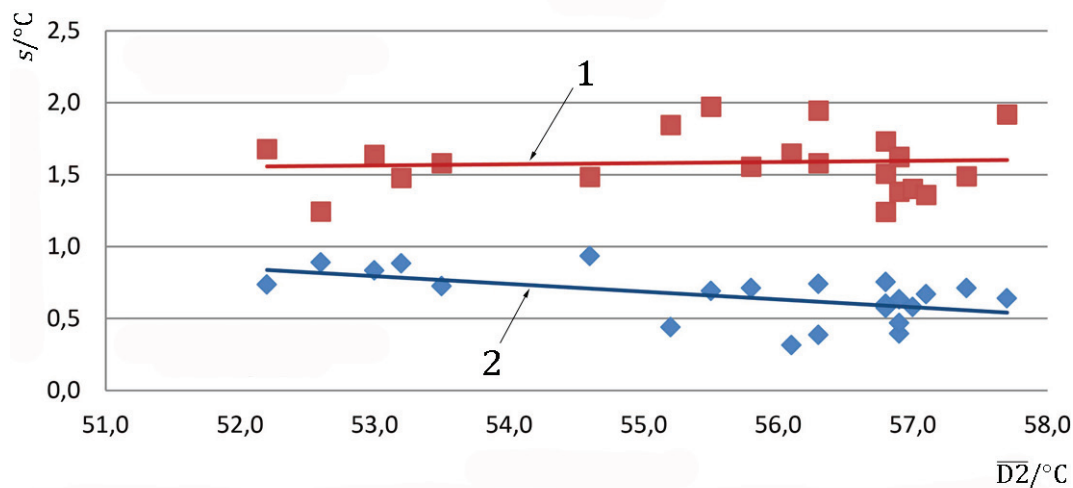
$$r = 0,567 \times 2,8 = 1,6$$

$$R = 0,970 \times 2,8 = 2,7$$

Figure B.8 — Relationship between precision standard deviation and mean D1

Table B.9 — Statistical results for D2

Parameter	Common wheat (B) and flour (F) sample										
	B12	B9	B6	B8	B11	B3	B4	B7	B2	B10	B13
Number of laboratories or tests	11	11	11	10	11	11	11	11	11	11	11
Mean value, $\overline{D2}$, °C	56,1	56,3	56,8	56,8	56,8	56,9	56,9	56,9	57,0	57,1	57,4
Repeatability standard deviation, s_r , °C	0,316	0,74	0,602	0,754	0,574	0,396	0,634	0,469	0,58	0,67	0,711
Coefficient of variation, $C_{V,r}$ ($s_r/\overline{D2}$) %	1	1	1	1	1	1	1	1	1	1	1
Repeatability limit, r ($2,8 \times s_r$)	0,88	2,05	1,67	2,09	1,59	1,10	1,76	1,30	1,61	1,86	1,97
Reproducibility standard deviation, s_R , °C	1,645	1,579	1,239	1,73	1,504	1,379	1,622	1,621	1,399	1,357	1,486
Coefficient of variation, $C_{V,R}$ ($s_R/\overline{D2}$) %	3	3	2	3	3	2	3	3	2	2	3
Reproducibility limit, R ($2,8 \times s_R$)	4,56	4,37	3,43	4,79	4,17	3,82	4,49	4,49	3,88	3,76	4,12
Parameter	Common wheat (B) and flour (F) sample										
	B5	F3	F12	F8	F10	F4	F11	F6	F7	F5	F9
Number of laboratories or tests	11	12	12	12	12	12	11	12	12	12	12
Mean value, $\overline{D2}$, °C	57,7	52,2	52,6	53,0	53,2	53,5	54,6	55,2	55,5	55,8	56,3
Repeatability standard deviation, s_r , °C	0,641	0,737	0,89	0,835	0,884	0,725	0,934	0,439	0,692	0,711	0,387
Coefficient of variation, $C_{V,r}$ ($s_r/\overline{D2}$) %	1	1	2	2	2	1	2	1	1	1	1
Repeatability limit, r ($2,8 \times s_r$)	1,78	2,04	2,47	2,31	2,45	2,01	2,59	1,22	1,92	1,97	1,07
Reproducibility standard deviation, s_R , °C	1,917	1,677	1,241	1,636	1,475	1,578	1,483	1,844	1,97	1,553	1,944
Coefficient of variation, $C_{V,R}$ ($s_R/\overline{D2}$) %	3	3	2	3	3	3	3	3	4	3	3
Reproducibility limit, R ($2,8 \times s_R$)	5,31	4,65	3,44	4,53	4,09	4,37	4,11	5,11	5,46	4,30	5,38



Key

s standard deviation

1 standard deviation of reproducibility,
 $s_R = 0,008\ 2 \overline{D2} + 1,129\ 3 \quad R^2 = 0,004\ 6$

$\overline{D2}$ mean temperature corresponding to C2

2 standard deviation of repeatability,
 $s_r = -0,053\ 8 \overline{D2} + 3,643\ 5 \quad R^2 = 0,292$

The graph shows that the repeatability and reproducibility standard deviations remain constant, regardless of mean D2 level.

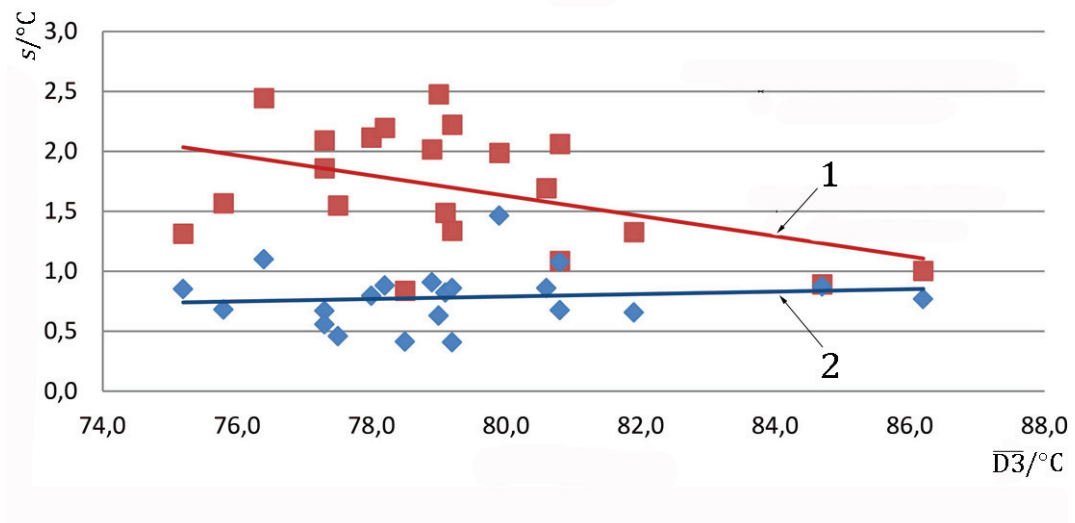
$$r = 0,651 \times 2,8 = 1,8$$

$$R = 1,585 \times 2,8 = 4,4$$

Figure B.9 — Relationship between precision standard deviation and mean D2

Table B.10 — Statistical results for D3

Parameter	Common wheat (B) and flour (F) sample										
	B6	B13	B2	B11	B3	B7	B5	B8	B12	B9	B10
Number of laboratories or tests	11	11	11	11	11	11	11	9	11	11	4
Mean value, $\overline{D3}$, °C	75,2	75,8	77,3	77,3	77,5	78,0	78,2	79,0	79,1	79,2	79,2
Repeatability standard deviation, s_r , °C	0,85	0,679	0,669	0,558	0,458	0,794	0,88	0,628	0,821	0,858	0,408
Coefficient of variation, $C_{V,r}$ ($s_r/\overline{D3}$) %	1	1	1	1	1	1	1	1	1	1	1
Repeatability limit, r ($2,8 \times s_r$)	2,35	1,88	1,85	1,55	1,27	2,20	2,44	1,74	2,27	2,38	1,13
Reproducibility standard deviation, s_R , °C	1,311	1,566	1,856	2,09	1,546	2,113	2,194	2,474	1,485	2,221	1,336
Coefficient of variation, $C_{V,R}$ ($s_R/\overline{D3}$) %	2	2	2	3	2	3	3	3	2	3	2
Reproducibility limit, R ($2,8 \times s_R$)	3,63	4,34	5,14	5,79	4,28	5,85	6,08	6,85	4,11	6,15	3,70
Parameter	Common wheat (B) and flour (F) sample										
	B4	F12	F10	F7	F4	F3	F9	F8	F5	F6	
Number of laboratories or tests	10	12	3	11	12	6	12	8	6		4
Mean value, $\overline{D3}$, °C	79,9	76,4	78,5	78,9	80,6	80,8	80,8	81,9	84,7		86,2
Repeatability standard deviation, s_r , °C	1,464	1,101	0,412	0,907	0,859	1,075	0,675	0,657	0,873		0,767
Coefficient of variation, $C_{V,r}$ ($s_r/\overline{D3}$) %	2	1	1	1	1	1	1	1	1		1
Repeatability limit, r ($2,8 \times s_r$)	4,06	3,05	1,14	2,51	2,38	2,98	1,87	1,82	2,42		2,12
Reproducibility standard deviation, s_R , °C	1,985	2,441	0,835	2,013	1,69	1,084	2,06	1,324	0,889		1,001
Coefficient of variation, $C_{V,R}$ ($s_R/\overline{D3}$) %	2	3	1	3	2	1	3	2	1		1
Reproducibility limit, R ($2,8 \times s_R$)	5,50	6,76	2,31	5,58	4,68	3,00	5,71	3,67	2,46		2,77



Key

s standard deviation

1 standard deviation of reproducibility,
 $s_R = -0,084\ 4 \overline{D3} + 8,378\ 1 \quad R^2 = 0,198\ 8$

$\overline{D3}$ mean temperature corresponding to C3

2 standard deviation of repeatability,
 $s_r = 0,010\ 2 \overline{D3} - 0,027\ 9 \quad R^2 = 0,012\ 3$

The graph shows that the repeatability and reproducibility standard deviations remain constant, regardless of mean D3 level.

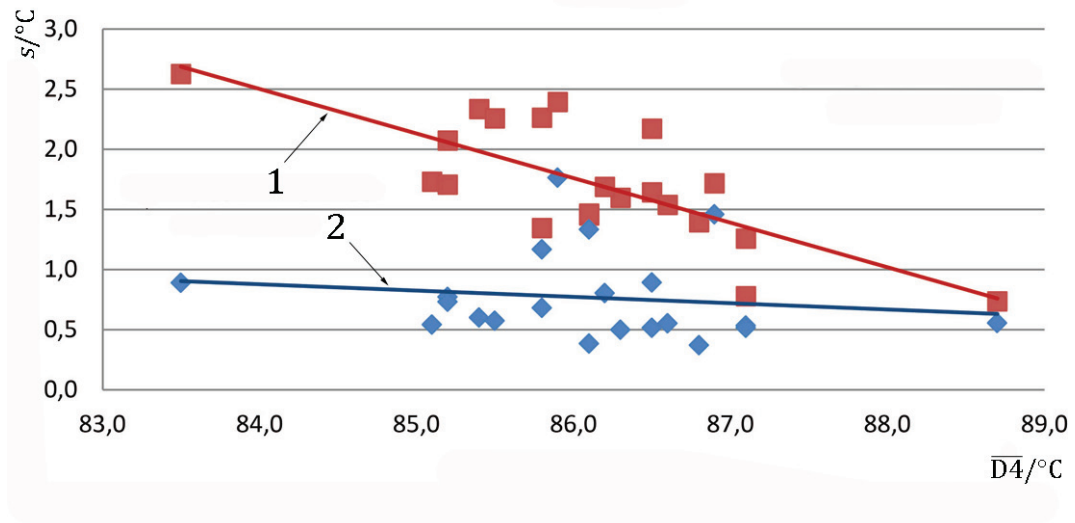
$$r = 0,781 \times 2,8 = 2,2$$

$$R = 1,691 \times 2,8 = 4,7$$

Figure B.10 — Relationship between precision standard deviation and mean D3

Table B.11 — Statistical results for D4

Parameter	Common wheat (B) and flour (F) sample										
	B11	B3	B5	B10	B6	B7	B4	B8	B13	B2	B9
Number of laboratories or tests	11	11	11	4	11	11	10	9	11	11	11
Mean value, $\overline{D4}$, °C	83,5	85,1	85,2	85,4	85,8	85,8	85,9	86,1	86,1	86,3	86,5
Repeatability standard deviation, s_r , °C	0,889	0,541	0,771	0,601	0,679	1,166	1,762	1,332	0,382	0,497	0,514
Coefficient of variation, $C_{V,r} (s_r/\overline{D4})$ %	1	1	1	1	1	1	2	2	0	1	1
Repeatability limit, $r (2,8 \times s_r)$	2,46	1,50	2,14	1,66	1,88	3,23	4,88	3,69	1,06	1,38	1,42
Reproducibility standard deviation, s_R , °C	2,623	1,729	1,705	2,332	1,344	2,261	2,391	1,448	1,462	1,595	1,639
Coefficient of variation, $C_{V,R} (s_R/\overline{D4})$ %	3	2	2	3	2	3	3	2	2	2	2
Reproducibility limit, $R (2,8 \times s_R)$	7,27	4,79	4,72	6,46	3,72	6,26	6,62	4,01	4,05	4,42	4,54
Parameter	Common wheat (B) and flour (F) sample										
	B12	F9	F12	F4	F7	F8	F5	F3	F10	F6	
Number of laboratories or tests	11	12	12	12	11	8	6	6	3	4	
Mean value, $\overline{D4}$ (°C)	86,6	85,2	85,5	86,2	86,5	86,8	86,9	87,1	87,1	88,7	
Repeatability standard deviation, s_r , °C	0,551	0,731	0,574	0,803	0,892	0,369	1,458	0,533	0,515	0,554	
Coefficient of variation, $C_{V,r} (s_r/\overline{D4})$ %	1	1	1	1	1	0	2	1	1	1	
Repeatability limit, $r (2,8 \times s_r)$	1,53	2,02	1,59	2,22	2,47	1,02	4,04	1,48	1,43	1,53	
Reproducibility standard deviation, s_R , °C	1,536	2,07	2,255	1,684	2,168	1,392	1,715	0,776	1,255	0,734	
Coefficient of variation, $C_{V,R} (s_R/\overline{D4})$ %	2	2	3	2	3	2	2	1	1	1	
Reproducibility limit, $R (2,8 \times s_R)$	4,25	5,73	6,25	4,66	6,01	3,86	4,75	2,15	3,48	2,03	



Key

s standard deviation

1 standard deviation of reproducibility,
 $s_R = -0,3708 \bar{D}_4 + 33,649 \quad R^2 = 0,5685$

\bar{D}_4 mean temperature corresponding to C4

2 standard deviation of repeatability,
 $s_r = -0,0524 \bar{D}_4 + 5,2785 \quad R^2 = 0,0209$

The graph shows that the repeatability standard deviations are constant whereas the reproducibility standard deviations are proportional to the mean D4 level.

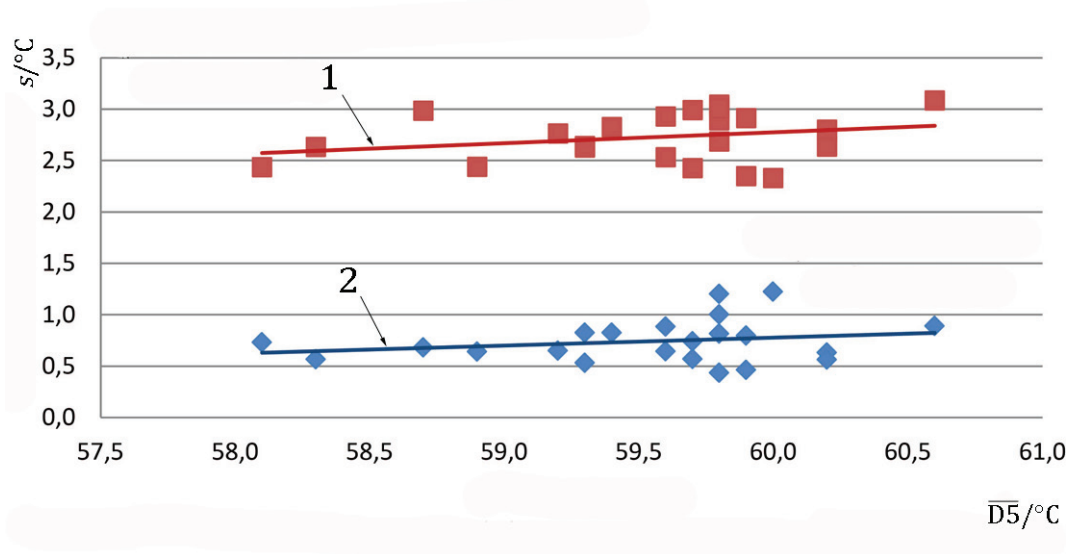
$$r = 0,767 \times 2,8 = 2,1$$

$$R = (-0,3798 \times D4 + 33,649) \times 2,8$$

Figure B.11 — Relationship between precision standard deviation and mean D4

Table B.12 — Statistical results for D₅

Parameter	Common wheat (B) and flour (F) sample										
	B11	B5	B3	B7	B13	B6	B9	B10	B12	B8	B2
Number of laboratories or tests	11	11	11	11	11	11	11	11	11	10	11
Mean value, $\overline{D5}$, °C	58,1	58,3	58,9	59,2	59,3	59,6	59,6	59,7	59,7	59,8	59,9
Repeatability standard deviation, s_r , °C	0,732	0,566	0,642	0,649	0,531	0,643	0,884	0,568	0,74	1,201	0,796
Coefficient of variation, $C_{V,r}$ ($s_r/\overline{D5}$) %	1	1	1	1	1	1	1	1	1	2	1
Repeatability limit, r ($2,8 \times s_r$)	2,03	1,57	1,78	1,80	1,47	1,78	2,45	1,57	2,05	3,33	2,20
Reproducibility standard deviation, s_R , °C	2,433	2,630	2,438	2,762	2,639	2,532	2,928	2,99	2,425	3,043	2,348
Coefficient of variation, $C_{V,R}$ ($s_R/\overline{D5}$) %	4	5	4	5	4	4	5	5	4	5	4
Reproducibility limit, R ($2,8 \times s_R$)	6,74	7,28	6,75	7,65	7,31	7,01	8,11	8,28	6,72	8,43	6,50
Parameter	Common wheat (B) and flour (F) sample										
	B4	F9	F10	F4	F5	F7	F12	F8	F3	F11	F6
Number of laboratories or tests	11	12	12	12	12	12	12	12	12	11	12
Mean value, $\overline{D5}$, °C	60,2	58,7	59,3	59,4	59,8	59,8	59,8	59,9	60,0	60,2	60,6
Repeatability standard deviation, s_r , °C	0,63	0,682	0,826	0,824	0,815	0,435	1,003	0,463	1,224	0,561	0,889
Coefficient of variation, $C_{V,r}$ ($s_r/\overline{D5}$) %	1	1	1	1	1	1	2	1	2	1	1
Repeatability limit, r ($2,8 \times s_r$)	1,75	1,89	2,29	2,28	2,26	1,20	2,78	1,28	3,39	1,55	2,46
Reproducibility standard deviation, s_R , °C	2,633	2,983	2,624	2,823	2,889	3,004	2,684	2,912	2,327	2,798	3,082
Coefficient of variation, $C_{V,R}$ ($s_R/\overline{D5}$) %	4	5	4	5	5	5	4	5	4	5	5
Reproducibility limit, R ($2,8 \times s_R$)	7,29	8,26	7,27	7,82	8,00	8,32	7,43	8,07	6,45	7,75	8,54



Key

s standard deviation

1 standard deviation of reproducibility,
 $s_R = 0,105\ 6\ \overline{D5} - 3,561\ R^2 = 0,072\ 5$

$\overline{D5}$ mean temperature corresponding to C5

2 standard deviation of repeatability,
 $s_r = 0,077\ 4\ \overline{D5} - 3,867\ 5\ R^2 = 0,050\ 1$

The graph shows that the repeatability and reproducibility standard deviations remain constant, regardless of mean D5 level.

$$r = 0,741 \times 2,8 = 2,1$$

$$R = 2,724 \times 2,8 = 7,6$$

Figure B.12 — Relationship between precision standard deviation and mean D5

Bibliography

- [1] ISO 5725-2, *Accuracy (trueness and precision) of measurement methods and results — Part 2: Basic method for the determination of repeatability and reproducibility of a standard measurement method*
- [2] ISO 5725-3, *Accuracy (trueness and precision) of measurement methods and results — Part 3: Intermediate measures of the precision of a standard measurement method*
- [3] ISO 5725-6, *Accuracy (trueness and precision) of measurement methods and results — Part 6: Use in practice of accuracy values*
- [4] ISO 24333, *Cereals and cereal products — Sampling*
- [5] ISO 27971, *Cereals and cereal products — Common wheat (*Triticum aestivum* L.) — Determination of alveograph properties of dough at constant hydration from commercial or test flours and test milling methodology*
- [6] NF V03-765, *Céréales et produits céréaliers — Farines de blé tendres (*T. aestivum*) — Mesure du taux d'absorption d'eau des farines et des caractéristiques rhéologiques de la pâte pendant le pétrissage avec le Mixolab* [Cereal and cereal products — Common wheat (*T. aestivum*) flour — Measure of flour water absorption and rheological behaviour of dough during mixing using the Mixolab]
- [7] Directive BIPEA BY.102.D.9302, *Laboratory experimental milling for common wheat* (<http://www.bipea.org/>)

British Standards Institution (BSI)

BSI is the national body responsible for preparing British Standards and other standards-related publications, information and services.

BSI is incorporated by Royal Charter. British Standards and other standardization products are published by BSI Standards Limited.

About us

We bring together business, industry, government, consumers, innovators and others to shape their combined experience and expertise into standards-based solutions.

The knowledge embodied in our standards has been carefully assembled in a dependable format and refined through our open consultation process. Organizations of all sizes and across all sectors choose standards to help them achieve their goals.

Information on standards

We can provide you with the knowledge that your organization needs to succeed. Find out more about British Standards by visiting our website at bsigroup.com/standards or contacting our Customer Services team or Knowledge Centre.

Buying standards

You can buy and download PDF versions of BSI publications, including British and adopted European and international standards, through our website at bsigroup.com/shop, where hard copies can also be purchased.

If you need international and foreign standards from other Standards Development Organizations, hard copies can be ordered from our Customer Services team.

Subscriptions

Our range of subscription services are designed to make using standards easier for you. For further information on our subscription products go to bsigroup.com/subscriptions.

With **British Standards Online (BSOL)** you'll have instant access to over 55,000 British and adopted European and international standards from your desktop. It's available 24/7 and is refreshed daily so you'll always be up to date.

You can keep in touch with standards developments and receive substantial discounts on the purchase price of standards, both in single copy and subscription format, by becoming a **BSI Subscribing Member**.

PLUS is an updating service exclusive to BSI Subscribing Members. You will automatically receive the latest hard copy of your standards when they're revised or replaced.

To find out more about becoming a BSI Subscribing Member and the benefits of membership, please visit bsigroup.com/shop.

With a **Multi-User Network Licence (MUNL)** you are able to host standards publications on your intranet. Licences can cover as few or as many users as you wish. With updates supplied as soon as they're available, you can be sure your documentation is current. For further information, email bsmusales@bsigroup.com.

BSI Group Headquarters

389 Chiswick High Road London W4 4AL UK

Revisions

Our British Standards and other publications are updated by amendment or revision.

We continually improve the quality of our products and services to benefit your business. If you find an inaccuracy or ambiguity within a British Standard or other BSI publication please inform the Knowledge Centre.

Copyright

All the data, software and documentation set out in all British Standards and other BSI publications are the property of and copyrighted by BSI, or some person or entity that owns copyright in the information used (such as the international standardization bodies) and has formally licensed such information to BSI for commercial publication and use. Except as permitted under the Copyright, Designs and Patents Act 1988 no extract may be reproduced, stored in a retrieval system or transmitted in any form or by any means – electronic, photocopying, recording or otherwise – without prior written permission from BSI. Details and advice can be obtained from the Copyright & Licensing Department.

Useful Contacts:

Customer Services

Tel: +44 845 086 9001

Email (orders): orders@bsigroup.com

Email (enquiries): cservices@bsigroup.com

Subscriptions

Tel: +44 845 086 9001

Email: subscriptions@bsigroup.com

Knowledge Centre

Tel: +44 20 8996 7004

Email: knowledgecentre@bsigroup.com

Copyright & Licensing

Tel: +44 20 8996 7070

Email: copyright@bsigroup.com



...making excellence a habit.™