

BS EN ISO 16484-1:2010



BSI Standards Publication

Building automation and control systems (BACS)

Part 1: Project specification and implementation (ISO 16484-1:2010)

bsi.

...making excellence a habit.™

National foreword

This British Standard is the UK implementation of EN ISO 16484-1:2010.

The UK participation in its preparation was entrusted to Technical Committee RHE/16, Performance requirements for control systems.

A list of organizations represented on this committee can be obtained on request to its secretary.

This publication does not purport to include all the necessary provisions of a contract. Users are responsible for its correct application.

© BSI 2010

ISBN 978 0 580 67627 7

ICS 35.240.99; 91.040.01; 97.120

Compliance with a British Standard cannot confer immunity from legal obligations.

This British Standard was published under the authority of the Standards Policy and Strategy Committee on 31 December 2010.

Amendments issued since publication

Date	Text affected
------	---------------

ICS 91.040.01

English Version

Building automation and control systems (BACS) - Part 1:
Project specification and implementation (ISO 16484-1:2010)

Systèmes d'automatisation et de gestion technique du
bâtiment - Partie 1: Spécification et mise en oeuvre d'un
projet (ISO 16484-1:2010)

Systeme der Gebäudeautomation (GA) - Teil 1:
Projektplanung und -ausführung (ISO 16484-1:2010)

This European Standard was approved by CEN on 30 October 2010.

CEN members are bound to comply with the CEN/CENELEC Internal Regulations which stipulate the conditions for giving this European Standard the status of a national standard without any alteration. Up-to-date lists and bibliographical references concerning such national standards may be obtained on application to the CEN-CENELEC Management Centre or to any CEN member.

This European Standard exists in three official versions (English, French, German). A version in any other language made by translation under the responsibility of a CEN member into its own language and notified to the CEN-CENELEC Management Centre has the same status as the official versions.

CEN members are the national standards bodies of Austria, Belgium, Bulgaria, Croatia, Cyprus, Czech Republic, Denmark, Estonia, Finland, France, Germany, Greece, Hungary, Iceland, Ireland, Italy, Latvia, Lithuania, Luxembourg, Malta, Netherlands, Norway, Poland, Portugal, Romania, Slovakia, Slovenia, Spain, Sweden, Switzerland and United Kingdom.



EUROPEAN COMMITTEE FOR STANDARDIZATION
COMITÉ EUROPÉEN DE NORMALISATION
EUROPÄISCHES KOMITEE FÜR NORMUNG

Management Centre: Avenue Marnix 17, B-1000 Brussels

Foreword

This document (EN ISO 16484-1:2010) has been prepared by Technical Committee CEN/TC 247 "Building Automation, Controls and Building Management", the secretariat of which is held by SNV, in collaboration with Technical Committee ISO/TC 205 "Building environment design".

This European Standard shall be given the status of a national standard, either by publication of an identical text or by endorsement, at the latest by May 2011, and conflicting national standards shall be withdrawn at the latest by May 2011.

Attention is drawn to the possibility that some of the elements of this document may be the subject of patent rights. CEN [and/or CENELEC] shall not be held responsible for identifying any or all such patent rights.

According to the CEN/CENELEC Internal Regulations, the national standards organizations of the following countries are bound to implement this European Standard: Austria, Belgium, Bulgaria, Croatia, Cyprus, Czech Republic, Denmark, Estonia, Finland, France, Germany, Greece, Hungary, Iceland, Ireland, Italy, Latvia, Lithuania, Luxembourg, Malta, Netherlands, Norway, Poland, Portugal, Romania, Slovakia, Slovenia, Spain, Sweden, Switzerland and the United Kingdom.

Contents

Page

Foreword	iv
Introduction.....	v
1 Scope	1
2 Normative references	1
3 Terms and definitions	2
4 Abbreviated terms	3
5 Requirements and recommendations	4
5.1 Overview	4
5.2 Design phase	7
5.3 Engineering phase	13
5.4 Installation phase	17
5.5 Completion phase	20
5.6 Documentation	21
5.7 Training	23
6 Review and improvement of building performance	23
Bibliography	24

Foreword

ISO (the International Organization for Standardization) is a worldwide federation of national standards bodies (ISO member bodies). The work of preparing International Standards is normally carried out through ISO technical committees. Each member body interested in a subject for which a technical committee has been established has the right to be represented on that committee. International organizations, governmental and non-governmental, in liaison with ISO, also take part in the work. ISO collaborates closely with the International Electrotechnical Commission (IEC) on all matters of electrotechnical standardization.

International Standards are drafted in accordance with the rules given in the ISO/IEC Directives, Part 2.

The main task of technical committees is to prepare International Standards. Draft International Standards adopted by the technical committees are circulated to the member bodies for voting. Publication as an International Standard requires approval by at least 75 % of the member bodies casting a vote.

Attention is drawn to the possibility that some of the elements of this document may be the subject of patent rights. ISO shall not be held responsible for identifying any or all such patent rights.

ISO 16484-1 was prepared by the European Committee for Standardization (CEN) Technical Committee CEN/TC 247, *Building automation, controls and building management*, in collaboration with ISO Technical Committee ISO/TC 205, *Building environment design*, in accordance with the Agreement on technical cooperation between ISO and CEN (Vienna Agreement).

ISO 16484 consists of the following parts, under the general title *Building automation and control systems (BACS)*:

- *Part 1: Project specification and implementation*
- *Part 2: Hardware*
- *Part 3: Functions*
- *Part 5: Data communication protocol*
- *Part 6: Data communication conformance testing*

The following part is under preparation:

- *Part 4: Applications*

Introduction

ISO 16484 (all parts) is aimed at the design of new buildings and the retrofitting of existing buildings for an acceptable indoor environment, practical energy conservation, and efficiency.

ISO 16484 (all parts) is applicable to building automation and control systems (BACS), as follows:

- The environmental design for all building types requires complex methods of automation and control. The functional integration of services other than heating, ventilating and air conditioning (HVAC) is a general task for all parties employed to develop an integrated multi-application system. The integration comprises, for example, lighting and electric power distribution control, security control, transportation, maintenance management or facilities management. This system integration allows the user to take advantage of synergies between the different applications. ISO 16484 (all parts) gives guidance to architects, consultants and contractors as well as guidance to users on how to share such resources.
- The innovation cycles between devices, systems and networks vary. In order to make it possible to add and to change existing devices and extend the building automation and control network, several interfaces, both proprietary and standardized, are defined between the BACS network and the other systems. A manufacturer can design a product, both to meet his specific marketing objectives and to give the option to integrate that special device into a multi-application BACS. Interfaces are also defined in appropriate parts of ISO 16484 along with the necessary communications protocol and conformance test required to support the interworking of devices.
- A manufacturer, a systems house, or an electrical or mechanical contractor can assemble the implementation of a building automation and control system.
- The application of ISO 16484 (all parts) is not to standardize the hardware and software design or the architecture of a system, but to define the process for the creation of project specifications, where the functionality and the quality of the solution are clearly defined.

ISO 16484 (all parts) is intended for use by those involved in the design, manufacture, engineering, installation, commissioning, operational maintenance and training of BACS when contracted, i.e.:

- as a guide to the terminology of the building automation and control trade. Unambiguous terminology is required for a complete and accurate conveyance of the intent and details of ISO 16484 (all parts);
- in product development, to avoid unnecessary duplication of function or terminology, but not necessarily placing a restraint on the evolution of new products, systems or applications;
- as a basis for interfacing products and systems. In order to interoperate, the elements of a BACS require a unified data communication protocol and information model;
- as a basis for drawing up a project specification for procurement;
- as a code of practice for expert commissioning;
- by educational establishments wishing to train people in the field of BACS.

Building automation and control systems (BACS) —

Part 1: Project specification and implementation

1 Scope

This International Standard specifies guiding principles for project design and implementation and for the integration of other systems into the building automation and control systems (BACS).

This International Standard specifies the phases required for the BACS project, including:

- design (determination of project requirements and production of design documents including technical specifications),
- engineering (detailed function and hardware design),
- installation (installing and commissioning of the BACS), and
- completion (handover, acceptance and project finalization).

This International Standard also specifies the requirements for as-built documentation and training.

This International Standard is not applicable to operation and maintenance, nor is it applicable to retro or continuous commissioning, including a commissioning authority.

2 Normative references

The following referenced documents are indispensable for the application of this document. For dated references, only the edition cited applies. For undated references, the latest edition of the referenced document (including any amendments) applies.

ISO 16484-2:2004, *Building automation and control systems (BACS) — Part 2: Hardware*

ISO 16484-3, *Building automation and control systems (BACS) — Part 3: Functions*

ISO 16484-5, *Building automation and control systems — Part 5: Data communication protocol*

ISO 16484-6, *Building automation and control systems (BACS) — Part 6: Data communication conformance testing*

IEC 62305-4, *Protection against lightning — Part 4: Electrical and electronic systems within structures*

3 Terms and definitions

For the purposes of this document, the terms and definitions given in ISO 16484-2, ISO 16484-5, ISO 16484-6 and the following apply.

3.1

acceptance

decision and act of signing the handover document during the completion phase

NOTE The transfer of the responsibility for the system(s) from the supplier to the customer or their representative can be a legal act.

3.2

building performance

set of measurable building characteristics

NOTE 1 This includes energy efficiency, indoor air quality, moisture management and thermal comfort.

NOTE 2 This is also influenced by building construction and utilization, installed technical services and their operation.

3.3

building services

BS

utilities and installations supplied and distributed within a building

EXAMPLES Electricity, gas, heating, water and communications.

[Adapted from ISO 16484-2:2004, 3.33]

3.4

BACS commissioning

project and system-specific process of calibrating field devices, testing data points, adjusting parameters, verifying sequences of operation and other functionalities for the various elements of a BACS application

NOTE 1 The BACS commissioning is a part of the engineering services, according to ISO 16484-2:2004, 3.71 and includes commissioning activities at the installation phase.

NOTE 2 Commissioning reports are proof of the completeness of tasks and work.

NOTE 3 There are country variations in the naming of the term "commissioning" and variations in the tasks covered by this term.

3.5

commissioning process

systematic application of processes and procedures designed to ensure that the project objectives are achieved and maintained throughout the building lifetime

NOTE 1 The commissioning process begins at project conception and continues through to the pre-design, design, construction, start-up, turnover and occupancy to the operation phase.

NOTE 2 Details of how to conduct the commissioning process are outside the scope of this International Standard.

3.6

commissioning authority

CxA

entity identified by the owner who leads, plans, schedules, and coordinates the commissioning team to implement the commissioning process

NOTE In some countries there are "certified commissioning authorities".

3.7

completion

project phase where, when handover and finalization are achieved, the implementation of the BACS project can be considered as completed

3.8

engineering

acquiring and applying technical knowledge to design and implement devices, systems and processes that realize the desired objective

NOTE This includes project and system-specific services for planning, configuring and commissioning of the various parts of a BACS.

3.9

finalization

task during the project completion phase where the supplier resolves outstanding items

3.10

functional description

overall description that explains how each part of the system/plant is expected to operate, interact and be interacted with

NOTE The description covers material energy and signal flow of a plant or a system. Functions/operations are described as: storing, transmitting, converting, transforming and interlinking.

3.11

handover

formal process that transfers a system or part of a system usage from the supplier to the customer or their representative

NOTE The transfer of the operational responsibility for the system from the supplier to the customer can be a legal act or be agreed by contract.

3.12

installation instruction

document that explains how to install a technical device

NOTE 1 There can be several installation instructions for a device, e.g. mechanical, electrical.

NOTE 2 Installation instructions can be found from many sources, e.g. directives, standards, guidelines, professional recommendations, manufacturer's instructions for products.

3.13

migrate, verb

modernize the implemented software or the hardware under extensive utilization of the present infrastructure

3.14

system integration

bringing together subsystems into one system to function together as a system

4 Abbreviated terms

For the purposes of this document, the symbols, abbreviations and acronyms given in ISO 16484-2, ISO 16484-5, ISO 16484-6 and the following apply.

BACS Building automation and control system

CxA Commissioning authority

EMC	Electromagnetic compatibility
EMP	Electromagnetic pulse
HVAC	Heating, ventilating and air conditioning
LEMP	Lightning electromagnetic pulse
UPS	Uninterruptible power supply
VPN	Virtual private network

5 Requirements and recommendations

5.1 Overview

5.1.1 General

The BACS project normally commences after the client appoints a BACS consultant or supplier.

The quality of the implementation of a BACS is dependent on the design of building systems and the specification of the commissioning process. The scope of commissioning referred to in this part of ISO 16484 is as defined in ISO 16484-2:2004, 3.42. In order to produce and maintain the required quality of building performance after the implementation has been completed, application of a commissioning process for review and improvement of commissioned values is recommended. Retro or continuous commissioning, including a commissioning authority, is not within the scope of this International Standard.

5.1.2 Phases of the BACS project

This clause specifies the main actions and decisions necessary in order to implement a project in the different phases (see Figure 1). It serves for all the parties involved in the different phases of a project. The phases of a project associated with the implementation of a BACS are as follows.

5.1.2.1 Design phase

The design phase consists of:

- a) the determination of project requirements;
- b) the project planning and organization;
- c) the technical specification;
- d) the establishment of a contract.

5.1.2.2 Engineering phase

The engineering phase consists of:

- a) project planning and coordination;
- b) detailed function and hardware specification design;
- c) engineering design approval;
- d) hardware configuration;

- e) control strategy and processing functions configuration;
- f) management and operator functions configuration;
- g) system testing.

5.1.2.3 Installation phase

The installation phase consists of:

- a) installing;
- b) BACS commissioning.

5.1.2.4 Completion phase

The completion phase consists of:

- a) system demonstration;
- b) operator training;
- c) handover;
- d) acceptance;
- e) finalization;
- f) completion decision.

5.1.3 Documentation

Work done during the engineering, installation and completion phases will serve as a basis for providing as-built documentation, see 5.6.

5.1.4 Training

Work done during the engineering, installation and completion phases will serve as a basis for providing training, see 5.7.

5.1.5 Reviewing and improving building performance

This phase has been included for completeness. It does not form part of a BACS project but, after completion, improved building performance (according to the actual use) can be achieved by the BACS if the commissioned values are reviewed and amended periodically, providing improved energy performance and reduced operating costs. This can be achieved through the commissioning process, which is not covered in this International Standard.

5.1.6 Graphical overview

A possible sequence of the important decisions and activities in each phase is shown in Figure 1. It is not prescriptive; some activities can be carried out earlier or later, depending on the project requirements, e.g. documentation and training.

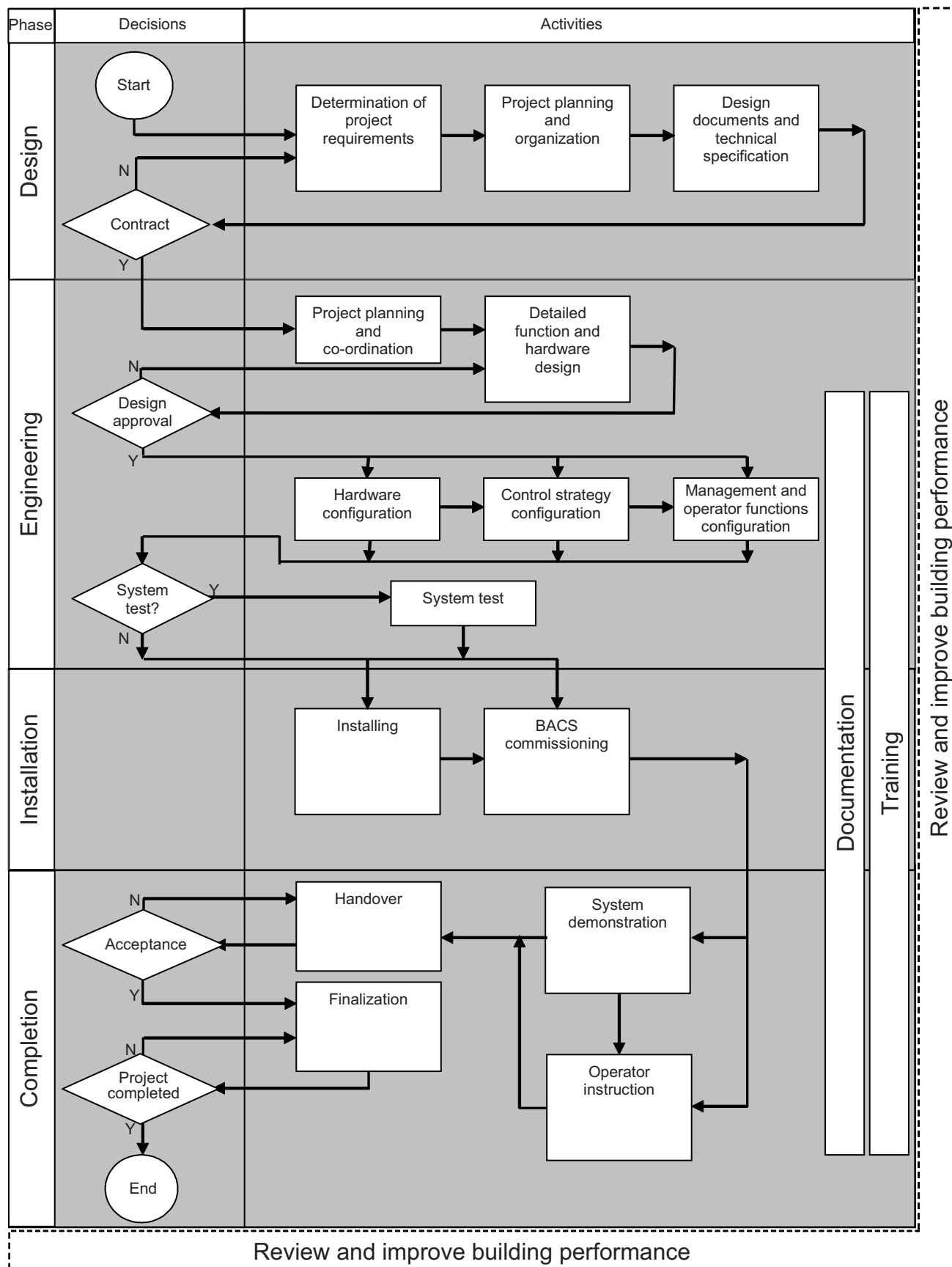


Figure 1 — Process and structure of BACS project implementation

5.2 Design phase

5.2.1 General

This section specifies tasks to be carried out in the design process of the various parts of a BACS. It is assumed that at the start of the design process, the information necessary in order to accommodate a BACS is available. The tasks to perform are project and system-specific.

The design phase covers the following areas:

- a) determination of project requirements;
- b) project planning and organization;
- c) design documents and technical specification;
- d) the contract.

Owners and users of buildings can benefit from the integration of various technical building systems. In cases of system integration, it is important that parties agree on the particular meaning of system integration with respect to the specific project requirements. Project management consideration shall be given to the functional operation responsibility for attached subsystems.

5.2.2 Determination of project requirements

5.2.2.1 Overview

In order to meet the client's requirements, the general project requirements for the BACS should take into account the following:

- a) general considerations;
- b) integration requirements;
- c) physical requirements;
- d) occupational requirements;
- e) system requirements;
- f) site and client-specific requirements.

Attention should also be given to energy performance.

The description of project requirements shall be approved by the client.

5.2.2.2 General considerations

When considering the determination of system requirements, the following factors should be taken into account:

- a) building structure, e.g. metal frame, concrete, size, thermally active building components, historical construction (listed objects);
- b) type of building(s), e.g. high rise, one storey, open campus, tunnel;
- c) building usage type and profile, e.g. hospital, single/multi tenant, industrial, commercial, residential;

- d) space usage profile, e.g. occupation schemes, diverse usage of space, continuous operation;
- e) system integrity including off-site considerations, e.g. communication infrastructure and topology, availability, reliability, response time, safety and security, redundancy;
- f) EMC, EMP and LEMP requirements according to IEC 62305-4;
- g) intended organization of operation and technical services, e.g. third party, caretaker, trade segregation, user account levels;
- h) energy supply requirements, e.g. alternative energy systems, load shedding, energy monitoring;
- i) safety and security systems integration with BACS and mutual interaction, e.g. fire system, access control system, interoperability area and integration depth;
- j) implementation of the project by phases, e.g. timescales for each phase, constraints on plant shutdowns, impact on continuous operation;
- k) budget, e.g. change contingency, overtime work;
- l) future usage, e.g. spare capacity, flexibility, future intended extensions;
- m) application of the commissioning process.

5.2.2.3 Integration requirements

5.2.2.3.1 Overview

This International Standard specifies general considerations for integration that are to be implemented in the following categories:

- a) integration/implementation;
- b) integration/operation;
- c) integration/function;
- d) integration/infrastructure.

5.2.2.3.2 Integration/general considerations

The following requirements for integration should be considered:

- a) the deployment of special system integration consultants;
- b) the allocation of responsibilities, e.g. for subsystem functionality and interfaces, for delivery of integration of subsystems;
- c) vendor and manufacturer independence, e.g. standardized protocols, profiles and interfaces;
- d) enhanced energy performance, e.g. interdisciplinary operations of HVAC, blinds and lighting controls;
- e) compatibility, e.g. software/hardware versions of subsystems, protocol versions, proprietary protocols;
- f) interoperability, e.g. data sharing, event and alarm management, scheduling, trend and event logging, device and network management;
- g) functional interaction, e.g. fans disabled by fire conditions;

- h) single seat operation, e.g. shared computer, consolidated user information and alarms;
- i) infrastructure sharing, e.g. Ethernet structured cabling, shared computer;
- j) commissioning, e.g. availability and interaction of subsystems;
- k) interoperability diagnostics, e.g. event recording, device and object binding integrity, protocol analysing.

5.2.2.3.3 Integration/implementation

The following requirements for the implementation of integration should be considered:

- a) responsibilities, e.g. supplier of subsystems for its functionality and interfaces, party for the delivery of integration of subsystems;
- b) compatibility, e.g. change control, software/hardware versions, protocol versions, proprietary protocol details;
- c) commissioning, e.g. sequence of commissioning from subsystems to primary system.

5.2.2.3.4 Integration/operation

The following requirements for the effective operation of an integrated system should be considered:

- a) the number and types of data points, e.g. values, alarms, point/object names and mnemonics;
- b) the depth of information required, e.g. limits, scheduling, trends;
- c) the human system interface (HSI) requirements, e.g. single computer multi applications, single application, web browser, access rights;
- d) the user actions required, e.g. monitoring, commanding, acknowledgement, local overrides.

Integration can be achieved by multiple applications on a single computer (e.g. a web browser) or a single application that handles all information (e.g. full graphical representation of information). The information can be used for the purpose of monitoring or commanding, or both.

5.2.2.3.5 Integration/function

The following points for the interoperability of integration should be considered:

- a) function types to perform in which systems, e.g. time scheduling, maximum demand and other BACS functions from ISO 16484-3;
- b) interactions, dependencies and priorities, e.g. fire stopping fans, plant activation from access system;
- c) system behaviour in case of abnormality, e.g. default values, partial system/device restart, maintenance shutdown;
- d) number and types of shared data points, e.g. outdoor air temperature, scheduling, trending.

5.2.2.3.6 Integration/infrastructure

Infrastructure includes common physical items that facilitate communication and media sharing. Consideration should be given to the following regarding the infrastructure of integration:

- a) installation requirements, e.g. cabling systems, power over Ethernet, grounding, communication protocols, topology;

- b) network management, e.g. addresses, VPN, firewalls, remote access, access rights, segmentation;
- c) network capacity, e.g. bandwidth, normal and abnormal usage;
- d) availability and reliability, e.g. redundancy, setup and commissioning of integrated, decentralized and autonomous systems.

5.2.2.4 Physical requirements

Building infrastructure and plant equipment influence physical attributes of BACS and should be considered along with the following:

- a) new equipment and its ability to be monitored and controlled, e.g. adding monitoring and control;
- b) existing equipment and its ability to be monitored and controlled, e.g. reuse, adding functionality;
- c) existing controls or BACS, e.g. integrate, migrate, replace;
- d) space, e.g. for cabinets, wall mountings, human system interface (HSI);
- e) human system interface, e.g. local display, operator workstation;
- f) local conditions, e.g. environmental, temperature, humidity, seismic risk, extreme weather;
- g) cabling, e.g. topology, media type, size, rating, environment;
- h) power supply, e.g. frequency, voltage, emergency power supply, UPS.

5.2.2.5 Occupational requirements

The client's requirements will influence the scope and attributes of BACS and should be considered along with the following:

- a) priorities for operation of the building, e.g. emergency situations, normal conditions, overrides;
- b) occupancy profile, e.g. schedules/calendar, setpoints, operating modes, daylight saving, energy use;
- c) energy performance, e.g. energy usage, energy savings;
- d) comfort conditions, e.g. thermal, visual, acoustic, air quality;
- e) human system interfaces, e.g. local override/indication devices, operator and monitoring units or panels, operator work stations including visual display units, internet browser on different types of platforms.

5.2.2.6 System requirements

The client's requirements will influence the design of BACS and should be considered along with the following:

- a) priorities for operation, e.g. safety of personnel, protection of equipment, occupancy profile, comfort, energy savings, cost savings, reliability, indoor air quality;
- b) control strategies (see ISO 16484-3);
- c) management functions (see ISO 16484-3), e.g. data storage, data retrieval;
- d) maintenance management requirements, e.g. condition-based monitoring, local/remote reporting;
- e) energy management requirements;

- f) alarm strategy, e.g. categories, priorities, delivery, routing;
- g) human system interface, e.g. localization, multi language, graphics quality, types, functionality;
- h) system support, e.g. remote access, technical support;
- i) system performance, e.g. accuracy, response time, display response;
- j) system reliability, e.g. availability, redundancy;
- k) documentation, e.g. format and media, content, quantity, compliance certificates.

5.2.2.7 Site and client specific requirements

The site and client requirements influence the documentation and delivery of the BACS and should be considered along with the following:

- a) installation, e.g. electrical, mechanical, controls;
- b) commissioning and handover requirements, e.g. witness testing, process for uncompleted actions, summer/winter operation, phased delivery, documentation of the results;
- c) training, e.g. instructions for use, operation and maintenance, system/product training;
- d) documentation, e.g. language, content, media, certificates, software licences and backup;
- e) post completion, e.g. warranty/guarantee requirements, spare parts requirement, maintenance requirements and software updates;
- f) application of the commissioning process, e.g. required qualification and role of commissioning authority.

5.2.3 Project planning and organization

5.2.3.1 Overview

A clear management and reporting structure shall be described for all parties involved. The process shall allow for resolution of issues raised during the project and include:

- a) project planning;
- b) project organization;
- c) definition of responsibilities;
- d) details of specific constraints;
- e) change management.

5.2.3.2 Project planning

The project plan defines the milestones, tasks and deliverables that will drive the project. It details dependencies on other trades that affect the BACS timetable and identifies who is responsible for doing what, as well as the deadlines. A timetable detailing the BACS design, engineering, installation/commissioning and completion phases shall be provided.

5.2.3.3 Organization

Details of the roles and relationships within the organization required to deliver the project plan shall be provided. Consideration should at least be given to the following and where required it shall be documented:

- a) system integration, e.g. coordination, decision making;
- b) change management, e.g. authorization;
- c) commissioning, e.g. coordination, decision making, authority/agent;
- d) approvals, e.g. design, witness testing, acceptance;
- e) conflict management, e.g. escalation path.

5.2.3.4 Definition of responsibilities

A clear definition of all the roles mentioned in the organization document and their responsibilities shall be provided.

5.2.3.5 Details of specific constraints

All site-specific working requirements shall be detailed. Consideration should be given to the following:

- a) third party equipment, e.g. plant shutdown, clearance, access;
- b) security processes, e.g. personnel, computers, phones, security clearance;
- c) working hours, e.g. night/weekend shifts;
- d) special qualifications, e.g. training records, languages;
- e) environmental restrictions, e.g. clean areas, health and safety, wireless communications.

5.2.3.6 Change management

There shall be a change management process that handles changes based on customer feedback or from deficiencies found in the design specifications. Procedures should be defined to track and deal with:

- a) information exchange, documentation and circulation;
- b) the modifications of the design specifications;
- c) the approval by the involved parties of these design changes as interpreted by the supplier;
- d) the process by which the supplier requests additional data from the customer, e.g. the name of the data points, the setpoint values, the occupancy schedule, specific requirements on graphics;
- e) the agreement of contractual and financial consequences of any change.

5.2.4 Design documents and technical specification

The technical specification shall contain all relevant documents to fully detail the requirements as identified in 5.2.2 and 5.2.3. The detailed engineering works that are required should make use of the BACS function list as defined in ISO 16484-3. The BACS function list provides the correct allocation of engineering works in system integration projects and prevents unnecessary duplication of engineering.

The documents issued for tender should contain:

- a) required standards and regulations;
- b) address and location;
- c) site layout drawing;
- d) contractual requirements;
- e) systems and equipment within the scope of the project;
- f) overall functional description;
- g) project organization and responsibilities;
- h) project milestones and dependencies;
- i) project constraints;
- j) training and documentation requirements;
- k) specification documents for each system comprising:
 - 1) required standards and regulations,
 - 2) physical location of the system items,
 - 3) functional description including the sequence of operation as text or diagram,
 - 4) data points list and BACS function list if required,
 - 5) the principle and structure of point addressing and/or naming,
 - 6) commissioning requirements,
 - 7) system demonstration requirements,
 - 8) mechanical plant schematics and equipment details including sizing information, and
 - 9) spare parts requirement.

5.2.5 Contract

A contract that embodies the technical specification shall be established with participating parties before proceeding to the engineering phase.

5.3 Engineering phase

5.3.1 General

This section specifies tasks carried out in the process of configuring the various parts of a BACS. These tasks are project/system-specific.

The engineering phase covers the following areas:

- a) project planning and coordination details;

- b) detailed hardware and function design;
- c) approval of design submittals;
- d) hardware configuration;
- e) control strategy configuration;
- f) management and operator functions configuration;
- g) system test.

Work done during the engineering phase serves as a basis for providing as-built documentation and training.

5.3.2 Project planning and coordination details

Within the scope of their contract the responsibility for detailed planning, management and coordination lies with the organization that places contracts with others.

Named individuals responsible for interfacing between the customer and their supplier(s) shall be identified. Any changes shall be communicated to all parties involved.

The process for reporting performance against milestones is required to be defined and agreed between the involved parties.

The supplier shall create and maintain a delivery plan for equipment and a schedule, with milestones, to meet the overall project program.

5.3.3 Detailed hardware and function design

5.3.3.1 General

In this section the term "hardware" relates to all the physical devices to be provided by the supplier to the customer, including devices supplied by others but controlled by or that provide data to the BACS.

5.3.3.2 Prerequisites and dependencies

This section identifies tasks that should be carried out after receipt of the contract and in preparation of the submittals. The tasks are as follows:

- a) review technical specification and request clarifications, as appropriate;
- b) identify and communicate necessary dependencies such as, but not limited to:
 - 1) power requirements,
 - 2) network requirements, e.g. topology, IP network access points, remote communication services, and
 - 3) environmental requirements, e.g. temperature, humidity, dust, seismic rating.

5.3.3.3 Preparation of submittals

The submittal shall include the following:

- a) system architecture and system description;
- b) data points list and BACS function list if required;

- c) updated functional description including the sequence of operation as text or diagram;
- d) additional documents as required.

5.3.4 Approval of design submittals

The output from the hardware and function design is submitted to the customer's representative responsible for approval.

Approval is necessary to ensure that the hardware and function design meets the design specification and the results of any clarifications received from the prerequisites. It offers the opportunity for both the customer and the supplier to manage each other's expectations.

A response to the submittals, with any appropriate explanation if required, should be given in a timely manner.

The approved submittals form the basis for proceeding to the configuration tasks.

5.3.5 Hardware configuration

This section documents the minimum expected engineering tasks related to the physical items of plant to facilitate installation and BACS commissioning, and comprises the detailing of:

- a) field wiring, generation of schematics, terminal identification, device/system and plant connectivity, cable types;
- b) input/output allocation;
- c) network, addressing, network setup, existing networks, networking devices;
- d) equipment lists.

If there is to be system testing, a test plan has to be formulated taking the requirements into consideration. BACS commissioning requirements shall be identified and added to the commissioning plan.

During this phase there shall be input into the documentation and training plan.

5.3.6 Control strategy configuration

This section documents the tasks related to the configuration of the control to facilitate operation, as detailed in the specification.

The technical specification and approved functional description are used to create the control software. The software uses the input and output allocation as detailed in the hardware configuration. The items identified in the BACS function list are also implemented in the software.

When creating the software, consideration should be given to the following:

- a) sequence of operation;
- b) user accessible adjustments;
- c) events, alarms and routing requirements;
- d) user levels;
- e) interactions with third parties including data sharing;
- f) logged data;
- g) priorities.

The minimum output from the control strategy configuration comprises the control software and the description of operation.

If there is to be system testing, a test plan shall be formulated. BACS commissioning requirements shall be identified and added to the commissioning plan.

During this phase there shall be input into the documentation and training plan.

5.3.7 Management and operator function configuration

This section documents the tasks related to the configuration of the management and operator functions as detailed in the specification. These functions can be implemented centrally and/or distributed throughout the system.

The technical specification, the approved functional description and the control software are used to create the management and operator functions.

When configuring the management and operator functions consideration should be given to Clause 3 and the following:

- a) data collection: what, where, when (frequency) and how much;
- b) backing up, restoring and archiving data;
- c) interactions with third parties including data sharing.

If there is to be system testing, a test plan shall be formulated. BACS commissioning requirements shall be identified and added to the commissioning plan.

During this phase there shall be input into the documentation and training plan.

5.3.8 System test

This section relates to the system test prior to installation, if required by the contract. The purpose of the testing is to confirm that the system or representative parts of the system meet the functional and operational specifications and work as expected. If the system fails to work as expected, the change management process should be used.

The tests as identified in the configuration sections are executed. These tests can cover, for example, the following:

- a) control strategy and BACS functions;
- b) electrical panels containing controllers;
- c) example installation;
- d) human system interface usability;
- e) interoperability.

Usually the results of these tests are validated by an authorized person.

5.4 Installation phase

5.4.1 General

This section specifies tasks carried out when installing the various parts of a BACS. These tasks are project/system-specific.

Installation phase covers the following areas:

- a) installing;
- b) BACS commissioning.

Work done during the engineering, installation and completion phases serves as a basis for providing documentation and training. On completion of the installation phase, documents should be updated to reflect changes.

5.4.2 Installing

5.4.2.1 General principles

All equipment shall be installed in accordance with the relevant installation instructions. The location for the equipment is to be as defined in the design submittals. Tagging of equipment and cables shall be completed as required by the specification.

The agreed location access requirements need to be coordinated to ensure that a safe working environment and progress to plan can be achieved.

Where common equipment or integration is required, special attention shall be given to coordination with the involved parties.

The installation can be considered completed when the parts and equipment are correctly installed to enable BACS commissioning to commence. Installation may be phased to enable commissioning on parts of the BACS as subsystems become available.

Installing covers the following areas:

- a) field devices;
- b) BACS equipment;
- c) other equipment;
- d) cabling.

5.4.2.2 Field devices

Field devices shall be installed in accordance with the relevant installation instructions. Incorrect installation and location of field devices can lead to poor control performance and increased maintenance efforts. Access to these devices shall be considered for maintenance operations.

Special attention shall be given to items that provide safety or protection, where the placement and mounting of these devices are critical, e.g. high/low limit pressure, high/low limit temperature, smoke detection and control.

5.4.2.3 BACS equipment

BACS equipment shall be installed in accordance with relevant installation instructions. Their access should be possible for maintenance operations.

5.4.2.4 Other equipment

Where required, as part of the contract, other supplied equipment shall be installed according to relevant installation instructions.

5.4.2.5 Cabling

Where required, as part of the contract, cables shall be installed according to regulations. Termination of cables shall be in accordance with installation instructions, e.g. with or without ground protection from electromagnetic interference, maximum length, etc. In general, ISO/IEC TR 14763-2 applies to communication networks.

5.4.3 BACS commissioning

5.4.3.1 General principles

The scope of this section covers the commissioning of the BACS and its interaction with related systems. It is not intended to be a comprehensive description of all aspects of commissioning a building.

In this part of ISO 16484, commissioning of the BACS comprises a series of tasks performed on the installed controls equipment that proves the installation meets the contracted technical specification and enables the BACS to be put into service. The BACS commissioning activities cover the following:

- a) commissioning plan;
- b) commissioning prerequisites;
- c) hardware verification;
- d) control strategy verification;
- e) management and operator functions verification.

5.4.3.2 Commissioning plan

The commissioning plan is defined during the engineering phase taking into account requirements in the technical specification document. It includes the tests and checks to be performed, coordination requirements and the role of each party in their execution, in addition to the procedure for reporting these tests and checks and the phasing of the commissioning.

The commissioning plan should identify requirements such as:

- a) availability of the plant connected to the element to be commissioned;
- b) water and air balancing;
- c) specific climatic conditions;
- d) specific occupation conditions;
- e) availability of required services.

5.4.3.3 Commissioning prerequisites

Before beginning commissioning (or one of its stages) the following are required:

- a) confirmation of safe working conditions for the system;
- b) all variable parameters and switches set to appropriate values and settings;
- c) items associated with the system are available and operational;
- d) access is possible to all associated areas of the building.

5.4.3.4 Hardware verification

The primary task of hardware verification is the confirmation of the following:

- a) installation of items conform to manufacturer's instructions;
- b) items are safe to operate;
- c) items are correctly cabled, tagged and connected;
- d) network communications are installed and operating as specified;
- e) commissioning results are recorded.

5.4.3.5 Control strategy verification

The primary task of control strategy verification is the confirmation of the following:

- a) system being commissioned is safe to operate;
- b) operation of inputs, outputs and processing functions;
- c) static and dynamic behaviour of control loops;
- d) interaction between various control strategies and systems;
- e) time-dependent activities;
- f) event handling, including alarm routing and grouping;
- g) software and configuration files are backed up;
- h) commissioning results are recorded.

5.4.3.6 Management and operator function verification

The primary task of management and operator function verification is the confirmation of the following:

- a) display graphics and print outputs are a representation of the actual installation;
- b) user interface navigation links (buttons, text, icons, etc.) operate as indicated;
- c) data points relate to the intended display items;
- d) recorded data relate to the intended data points;

- e) system access control account management is configured;
- f) calendars and timed events are configured;
- g) alarm handling is configured;
- h) software and configuration files are backed up;
- i) commissioning results are recorded.

5.5 Completion phase

5.5.1 General

This section specifies tasks to be carried out in the completion phase. The completion phase may be split into several parts and covers the following tasks:

- a) system demonstration;
- b) operator instruction;
- c) handover;
- d) acceptance;
- e) finalization;
- f) completion decision.

5.5.2 System demonstration

The scope of the system demonstration will be as defined in the specification or agreed changes. If witness testing is required, the witnessing individuals shall be identified and their contact details provided to the supplier.

The scope of the samples for witness testing will be agreed between the witnessing individuals and the supplier. The tests can include the following, which should be approved:

- a) completeness of systems, including installation and documentation as well as other agreed deliverables;
- b) implementation of the agreed changes;
- c) BACS commissioning records;
- d) operation of selected control functions using live conditions or simulation or forced conditions;
- e) operation of selected interlocks and interactions;
- f) operation of selected features of the human system interfaces;
- g) records of witness testing.

Witness testing can produce a list of changes that require processing via the change management process or a list of corrective actions that can trigger further actions.

5.5.3 Operator training

The intention of the operator training is to inform the customer's representative(s) about the operation of the installed components, features and functions of the BACS and its contribution to achieve energy savings. This is usually performed on site and should be instigated via a formal invitation. The operator instructions should contain the following:

- a) safety instructions;
- b) system operating instructions;
- c) maintenance requirements, e.g. data/system backup;
- d) training requirements identified during instruction;
- e) record of attendance and content of training.

5.5.4 Handover

Handover is a formal process that transfers the BACS from the supplier to the customer or their representative. Either this process has to be agreed by contract or it must be legally defined. As preparation for formal acceptance a document shall be produced that records the following:

- a) effective date and participants;
- b) scope of the handover, e.g. software licences, hardware;
- c) references to supporting documentation, e.g. list of outstanding items.

5.5.5 Acceptance

Acceptance is the decision of accepting handover and the act of signing the handover document. The signatories should be recorded. The customer accepts the system as it is, with or without outstanding items (as indicated in the handover document). The outstanding items are to be resolved by the supplier within agreed timescales.

5.5.6 Finalization

In this task, recorded outstanding items identified at handover are resolved to achieve project completion. Outstanding items that are not BACS based or have dependencies on others should not prevent the completion of the task. In some circumstances they will remain outstanding until the dependency is resolved or an acceptable resolution is agreed.

5.5.7 Completion decision

Project completion is the indication that finalization has been achieved. The project implementation of the BACS can now be considered finished.

5.6 Documentation

5.6.1 General

All documentation that is project specific shall be provided as-built. Unless detailed in the specification, all or part of the documentation may be provided by the BACS itself.

The content of the documentation shall comprise the following items and others required by the specification which should be compiled during the course of the project:

- a) user documents;
- b) datasheets;
- c) operation and maintenance documents.

5.6.2 User documents

A user document shall be provided for each type of user interface supplied within the project.

5.6.3 Datasheets

A datasheet shall be provided for all types of field devices and BACS equipment supplied within the project. Other equipment supplied shall have suitable documents, e.g. wiring diagrams.

5.6.4 Operation and maintenance documents

The purpose of these documents is to provide sufficient information to operate and maintain the BACS safely and as specified.

The documents should include the following items:

- a) system documentation:
 - 1) documentation specific to the application:
 - i) network topology schematics;
 - ii) functional descriptions including the sequence of operation as text or diagram;
 - 2) the state of the system and the condition when handed over which should include:
 - i) details of the final version of software and firmware installed at handover;
 - ii) details of application software configurable settings, e.g. control parameter;
 - iii) points list or BACS function list;
 - iv) commissioned settings, e.g. setpoints;
 - v) network device settings;
 - 3) wiring diagram when electrical panels are supplied under the contract;
 - 4) supplied equipment list;
 - 5) supplied software licences;
 - 6) required certifications;
- b) maintenance documentation:
 - 1) details of agreed maintenance contract;
 - 2) list of suggested spare parts;
 - 3) preventative maintenance schedule;
 - 4) directory of contacts associated with maintenance and support.

5.7 Training

The objective of the training is to give competence to the target group(s) in the day-to-day operation and use of the BACS. The content and timing of the training should be derived during the course of the engineering, installation and completion phases. The delivery of the training shall be provided in accordance with the specification and the offered solution re-evaluated in light of the derived content, the skills of the target group(s) and the on-site organization.

When training is provided, attendees, dates and course content should be recorded.

6 Review and improvement of building performance

The process of reviewing and improving the performance of building automation systems is typically iterative and takes place in all phases of the project implementation. It also continues to take place after project completion and throughout the life cycle of the facility. These performance improvements may include modifications as necessary to maximize the effectiveness of the BACS taking into account changing site conditions and usage; this can provide improved energy performance and reduce operating costs. The specific details on how the review and improvement are carried out are not within the scope of this part of ISO 16484, which does not contain specific details on how the review and improvement are carried out. The details depend on judgment and are specific to the design and usage of the facility.

Bibliography

- [1] ISO/IEC TR 14763-2, *Information technology — Implementation and operation of customer premises cabling — Part 2: Planning and installation of copper cabling*
- [2] EN 15232, *Energy performance of buildings — Impact of building automation, controls and building management*
- [3] IEC 60050-351, *International Electrotechnical Vocabulary — Part 351: Control technology*
- [4] ASHRAE Guideline 0-2005, *The Commissioning Process*
- [5] ASHRAE Guideline 13-2000, *Specifying Direct Digital Control Systems*

British Standards Institution (BSI)

BSI is the national body responsible for preparing British Standards and other standards-related publications, information and services.

BSI is incorporated by Royal Charter. British Standards and other standardization products are published by BSI Standards Limited.

About us

We bring together business, industry, government, consumers, innovators and others to shape their combined experience and expertise into standards-based solutions.

The knowledge embodied in our standards has been carefully assembled in a dependable format and refined through our open consultation process. Organizations of all sizes and across all sectors choose standards to help them achieve their goals.

Information on standards

We can provide you with the knowledge that your organization needs to succeed. Find out more about British Standards by visiting our website at bsigroup.com/standards or contacting our Customer Services team or Knowledge Centre.

Buying standards

You can buy and download PDF versions of BSI publications, including British and adopted European and international standards, through our website at bsigroup.com/shop, where hard copies can also be purchased.

If you need international and foreign standards from other Standards Development Organizations, hard copies can be ordered from our Customer Services team.

Subscriptions

Our range of subscription services are designed to make using standards easier for you. For further information on our subscription products go to bsigroup.com/subscriptions.

With **British Standards Online (BSOL)** you'll have instant access to over 55,000 British and adopted European and international standards from your desktop. It's available 24/7 and is refreshed daily so you'll always be up to date.

You can keep in touch with standards developments and receive substantial discounts on the purchase price of standards, both in single copy and subscription format, by becoming a **BSI Subscribing Member**.

PLUS is an updating service exclusive to BSI Subscribing Members. You will automatically receive the latest hard copy of your standards when they're revised or replaced.

To find out more about becoming a BSI Subscribing Member and the benefits of membership, please visit bsigroup.com/shop.

With a **Multi-User Network Licence (MUNL)** you are able to host standards publications on your intranet. Licences can cover as few or as many users as you wish. With updates supplied as soon as they're available, you can be sure your documentation is current. For further information, email bsmusales@bsigroup.com.

BSI Group Headquarters

389 Chiswick High Road London W4 4AL UK



Revisions

Our British Standards and other publications are updated by amendment or revision.

We continually improve the quality of our products and services to benefit your business. If you find an inaccuracy or ambiguity within a British Standard or other BSI publication please inform the Knowledge Centre.

Copyright

All the data, software and documentation set out in all British Standards and other BSI publications are the property of and copyrighted by BSI, or some person or entity that owns copyright in the information used (such as the international standardization bodies) and has formally licensed such information to BSI for commercial publication and use. Except as permitted under the Copyright, Designs and Patents Act 1988 no extract may be reproduced, stored in a retrieval system or transmitted in any form or by any means – electronic, photocopying, recording or otherwise – without prior written permission from BSI. Details and advice can be obtained from the Copyright & Licensing Department.

Useful Contacts:

Customer Services

Tel: +44 845 086 9001

Email (orders): orders@bsigroup.com

Email (enquiries): cservices@bsigroup.com

Subscriptions

Tel: +44 845 086 9001

Email: subscriptions@bsigroup.com

Knowledge Centre

Tel: +44 20 8996 7004

Email: knowledgecentre@bsigroup.com

Copyright & Licensing

Tel: +44 20 8996 7070

Email: copyright@bsigroup.com

...making excellence a habit.™