

Blind rivets — Mechanical testing

The European Standard EN ISO 14589:2000 has the status of a British Standard

ICS 21.060.40

National foreword

This British Standard is the official English language version of EN ISO 14589:2000. It is identical with ISO 14589:2000. BS EN ISO 14589:2001, together with BS EN ISO 14588:2001, BS EN ISO 15973:2000, BS EN ISO 15974:2001, BS EN ISO 15975:2002, BS EN ISO 15976:2002, BS EN ISO 15977:2002, BS EN ISO 15978:2002 and BS EN ISO 15979:2002, supersedes BS 7349-1:1993 which is withdrawn.

The UK participation in its preparation was entrusted to Technical Committee FME/6, Rivets, which has the responsibility to:

- aid enquirers to understand the text;
- present to the responsible international/European committee any enquiries on the interpretation, or proposals for change, and keep the UK interests informed;
- monitor related international and European developments and promulgate them in the UK.

A list of organizations represented on this committee can be obtained on request to its secretary.

Cross-references

The British Standards which implement international or European publications referred to in this document may be found in the *BSI Catalogue* under the section entitled “International Standards Correspondence Index”, or by using the “Search” facility of the *BSI Electronic Catalogue* or of British Standards Online.

This publication does not purport to include all the necessary provisions of a contract. Users are responsible for its correct application.

Compliance with a British Standard does not of itself confer immunity from legal obligations.

Summary of pages

This document comprises a front cover, an inside front cover, the EN ISO title page, the EN ISO foreword page, the ISO title page, pages ii to iv, pages 1 to 13, the annex ZA page, an inside back cover and a back cover.

The BSI copyright notice displayed in this document indicates when the document was last issued.

This British Standard, having been prepared under the direction of the Engineering Sector Committee, was published under the authority of the Standards Committee and comes into effect on 15 April 2001

© BSI 22 November 2004

Amendments issued since publication

Amd. No.	Date	Comments
15341 Corrigendum No. 1	22 November 2004	Supersession details corrected

ICS 21.060.40

English version

Blind rivets - Mechanical testing (ISO 14589:2000)

Rivets aveugles - Essais mécaniques (ISO 14589:2000)

Blindniete - Mechanische Prüfung (ISO 14589:2000)

This European Standard was approved by CEN on 15 December 2000.

CEN members are bound to comply with the CEN/CENELEC Internal Regulations which stipulate the conditions for giving this European Standard the status of a national standard without any alteration. Up-to-date lists and bibliographical references concerning such national standards may be obtained on application to the Management Centre or to any CEN member.

This European Standard exists in three official versions (English, French, German). A version in any other language made by translation under the responsibility of a CEN member into its own language and notified to the Management Centre has the same status as the official versions.

CEN members are the national standards bodies of Austria, Belgium, Czech Republic, Denmark, Finland, France, Germany, Greece, Iceland, Ireland, Italy, Luxembourg, Netherlands, Norway, Portugal, Spain, Sweden, Switzerland and United Kingdom.



EUROPEAN COMMITTEE FOR STANDARDIZATION
COMITÉ EUROPÉEN DE NORMALISATION
EUROPÄISCHES KOMITEE FÜR NORMUNG

Management Centre: rue de Stassart, 36 B-1050 Brussels

Foreword

The text of the International Standard ISO 14589:2000 has been prepared by Technical Committee ISO/TC 2 "Fasteners" in collaboration with Technical Committee CEN/TC 185 "Threaded and non-threaded mechanical fasteners and accessories", the secretariat of which is held by DIN.

This European Standard shall be given the status of a national standard, either by publication of an identical text or by endorsement, at the latest by June 2001, and conflicting national standards shall be withdrawn at the latest by June 2001.

According to the CEN/CENELEC Internal Regulations, the national standards organizations of the following countries are bound to implement this European Standard: Austria, Belgium, Czech Republic, Denmark, Finland, France, Germany, Greece, Iceland, Ireland, Italy, Luxembourg, Netherlands, Norway, Portugal, Spain, Sweden, Switzerland and the United Kingdom.

Endorsement notice

The text of the International Standard ISO 14589:2000 was approved by CEN as a European Standard without any modification.

NOTE: Normative references to International Standards are listed in annex ZA (normative).

INTERNATIONAL
STANDARD

ISO
14589

First edition
2000-12-15

Blind rivets — Mechanical testing

Rivets aveugles — Essais mécaniques



Reference number
ISO 14589:2000(E)

Contents

Page

Foreword.....	iv
1 Scope	1
2 Normative reference	1
3 Shear and tensile tests.....	1
4 Mandrel head retention capability test	8
5 Mandrel push out resistance test (prior to setting).....	10
6 Mandrel break load test.....	11
Annex A (informative) Example of a suitable test fixture for tensile testing of rivets	13

Foreword

ISO (the International Organization for Standardization) is a worldwide federation of national standards bodies (ISO member bodies). The work of preparing International Standards is normally carried out through ISO technical committees. Each member body interested in a subject for which a technical committee has been established has the right to be represented on that committee. International organizations, governmental and non-governmental, in liaison with ISO, also take part in the work. ISO collaborates closely with the International Electrotechnical Commission (IEC) on all matters of electrotechnical standardization.

International Standards are drafted in accordance with the rules given in the ISO/IEC Directives, Part 3.

Draft International Standards adopted by the technical committees are circulated to the member bodies for voting. Publication as an International Standard requires approval by at least 75 % of the member bodies casting a vote.

Attention is drawn to the possibility that some of the elements of this International Standard may be the subject of patent rights. ISO shall not be held responsible for identifying any or all such patent rights.

International Standard ISO 14589 was prepared by Technical Committee ISO/TC 2, *Fasteners*.

Annex A of this International Standard is for information only.

Blind rivets — Mechanical testing

1 Scope

This International Standard specifies the methods of mechanical testing of blind rivets including:

- shear test (see clause 3),
- tensile test (see clause 3),
- mandrel head retention capability test (see clause 4),
- mandrel push out resistance test (prior to setting) (see clause 5), and
- mandrel break load test (see clause 6),

at an ambient temperature of 10 °C to 35 °C.

It applies to blind rivets with nominal diameters up to and including 6,4 mm.

2 Normative reference

The following normative document contains provisions which, through reference in this text, constitute provisions of this International Standard. For dated references, subsequent amendments to, or revisions of, any of these publications do not apply. However, parties to agreements based on this International Standard are encouraged to investigate the possibility of applying the most recent edition of the normative document indicated below. For undated references, the latest edition of the normative document referred to applies. Members of ISO and IEC maintain registers of currently valid International Standards.

ISO 7500-1:1999, *Metallic materials — Verification of static uniaxial testing machines — Part 1: Tension/compression testing machines — Verification and calibration of the force-measuring system.*

3 Shear and tensile tests

3.1 Principle of shear and tensile tests

The tests consist of straining a blind rivet which is set in a test fixture by a shear load or tensile load to failure.

3.2 Test fixtures for shear and tensile tests

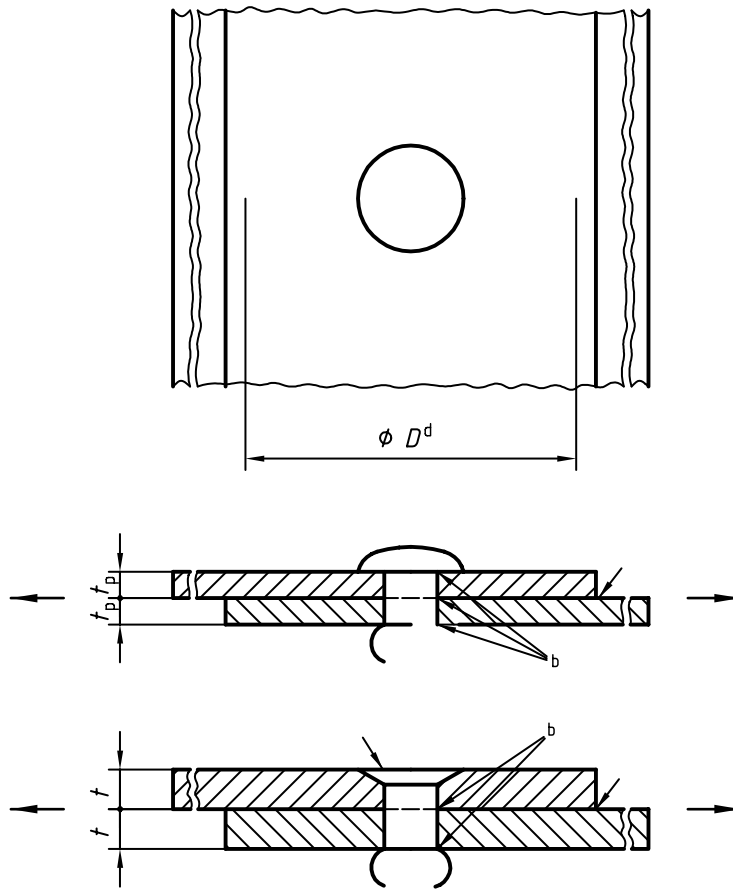
Two test fixtures are specified for each of both test methods. The test fixtures specified in 3.2.1.1 and 3.2.2.1 may be used for routine testing. The test fixtures specified in 3.2.1.2 and 3.2.2.2 may also be used for routine testing but are decisive in the case of dispute and are the referee test fixtures in such cases.

3.2.1 Test fixtures for shear testing

3.2.1.1 Routine shear testing

See Figure 1 for basic dimensions.

Surface roughness in micrometres



- a $Rz4$
- b There shall be no burrs at the corners of the test clearance holes.
- c Countersink angle shall be the nominal angle of the rivet head with the tolerance ${}^0_{-2^\circ}$.
- d Minimum circular plane area around the axis of the specimen with diameter $D = 25$ mm.

Figure 1 — Test fixture for routine shear testing

The test plates shall be made of steel having a hardness of not less than 420 HV30. To minimize the effect of distortion under load, fitted steel bolts should be used for attachment to the testing machine.

Test plates shall be discarded when the test clearance holes to accommodate the test rivet are no longer round, show signs of wear or damage or exceed the maximum diameter specified in Table 2.

For plate thicknesses and test clearance hole diameters see 3.2.3.

3.2.1.2 Referee shear testing

The inserts used in the test fixture according to Figure 3 shall have dimensions and finish as given in Figure 2.

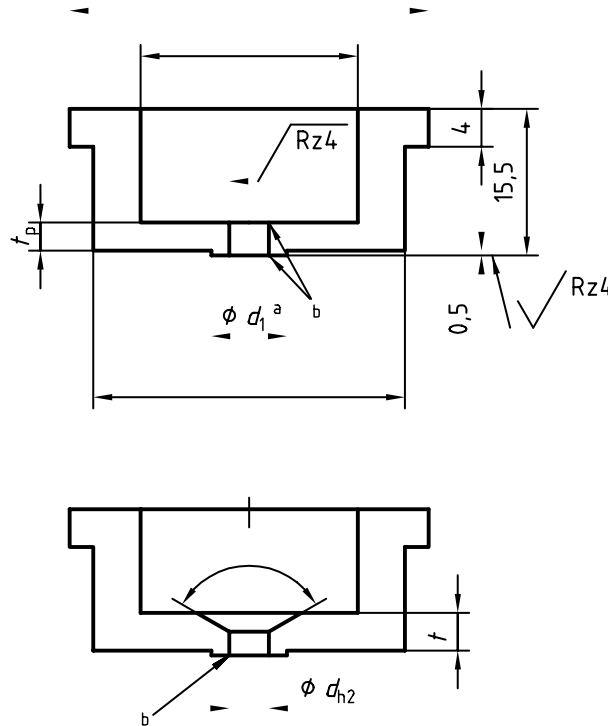
The inserts shall be made of hardened and tempered steel and shall have a hardness of 700 HV30 minimum. The test fixture which accommodates the test inserts shall be self-aligning when mounted in the tensile testing machine.

New inserts shall be used for each referee test programme.

If the test fixture according to Figure 3 is used for routine testing, test inserts shall be discarded when the test clearance holes to accommodate the test rivet are no longer round, show signs of wear or damage or exceed the maximum diameter specified in Table 2.

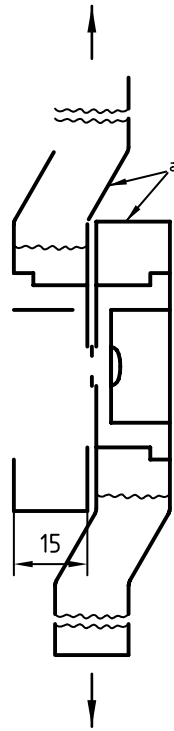
For insert thicknesses and test clearance hole diameters see 3.2.3.

Dimensions in millimetres,
surface roughness in micrometres



- a $d_1 = 2d$, where d is the nominal diameter of the rivet.
- b There shall be no burrs at the corners of the test clearance holes.
- c Countersink angle shall be the nominal angle of the rivet head with the tolerance $\begin{matrix} 0 \\ -2^\circ \end{matrix}$.

Figure 2 — Test inserts for blind rivets with protruding head and with countersunk head



a Width 50 mm

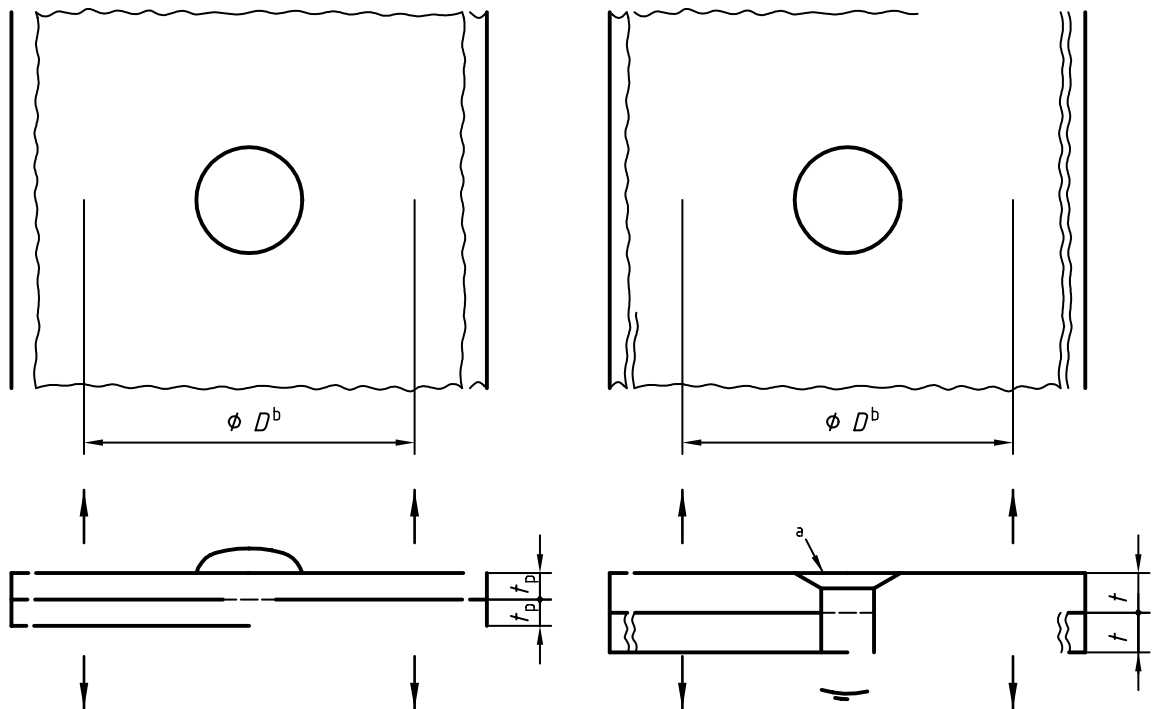
Figure 3 — Test fixture with riveted test assembly for referee shear testing

3.2.2 Test fixtures for tensile testing

3.2.2.1 Routine tensile testing

See Figure 4 for basic dimensions.

NOTE An example of a suitable test fixture is shown in annex A (informative).



- a Countersink angle shall be the nominal angle of the rivet head with the tolerance $_{-2^{\circ}}^0$.
- b Minimum circular plane area around the axis of the specimen with diameter $D = 25$ mm.

Figure 4 — Test fixture for routine tensile testing

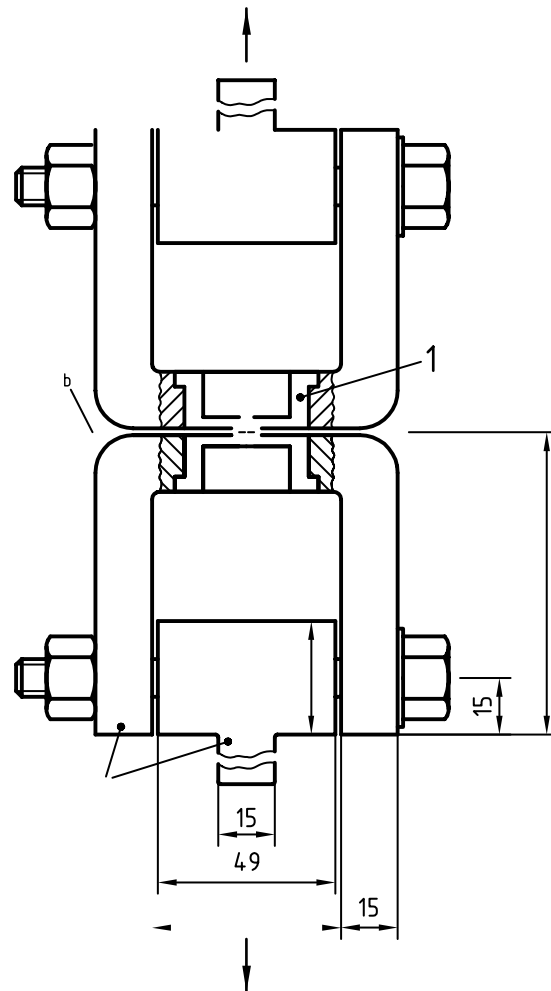
The test plates shall be made of steel having a hardness of not less than 420 HV30. To minimize the effect of distortion under load, fitted steel bolts should be used for attachment to the testing machine.

Test plates shall be discarded when the test clearance holes to accommodate the test rivet are no longer round, show signs of wear or damage or exceed the maximum diameter specified in Table 2.

For plate thicknesses and test clearance hole diameters see 3.2.3.

3.2.2.2 Referee tensile testing

For the inserts used in the test fixture according to Figure 5, the specifications of 3.2.1.2 apply.



Key

- 1 Insert (for details see Figure 2)
- a Width 50 mm
- b A spacer may be inserted to test longer rivets.

Figure 5 — Test fixture with riveted test assembly for referee tensile testing

3.2.3 Thickness of test plates/inserts and diameters of test clearance holes

For all test fixtures, the thicknesses of the test plates or test inserts respectively shall be in accordance with Table 1 and the diameters of the test clearance holes shall be in accordance with Table 2.

Table 1 — Thickness of test plates/inserts in relation to blind rivet types

Blind rivet type	Plate/insert thickness min.	
	t_p	t_c
Pull through mandrel Break pull mandrel (including extended set) Non break pull mandrel	$0,5d$	$0,75d$
Structural flush break self plugging pull mandrel	$0,75d$	$1,0d$
Multi-grip flush break positive lock pull mandrel	$0,65d$	$0,75d$
Drive pin	$0,5d$	$0,75d$
t_p is the thickness for rivets with protruding head. t_c is the thickness for rivets with countersunk head. d is the nominal rivet diameter.		

Table 2 — Diameter of test clearance holes for test plates/inserts

Dimensions in millimetres

d nom.	d_{h2}	
	max.	min.
2,4	2,60	2,55
3	3,20	3,15
3,2	3,40	3,35
4	4,20	4,15
4,8	5,00	4,95
5	5,20	5,15
6	6,20	6,15
6,4	6,60	6,55
d is the nominal rivet diameter. d_{h2} is the diameter of the test clearance hole.		

3.2.4 Forming the test assembly

The two test plates/test inserts which have the same nominal thickness shall be assembled to form a riveted assembly using the blind rivet to be tested. The rivet should be set with a setting tool and nose assembly in accordance with the setting procedure recommended by the blind rivet manufacturer.

The total thickness of the test assembly shall not exceed the maximum grip length specified for the rivet which is to be tested.

3.3 Test procedure for shear and tensile testing

The test assembly shall be mounted in a tensile testing machine which shall comply with ISO 7500-1.

The attachment grips to the tensile testing machine shall be self-aligning and shall guarantee that the load is applied in a straight line along the shear plane of the shear test specimen or in a straight line along the centreline of a tensile test specimen.

The load shall be applied continuously with a speed of testing which shall be not less than 7 mm/min nor greater than 13 mm/min, until the specimen fails.

The maximum load is recorded as the ultimate shear or tensile load of the rivet.

If the rivet fails before the specified minimum shear or tensile load is reached, the rivet has not passed the test.

3.4 Testing of short rivets

For rivets with maximum grip lengths shorter than the relevant $2 t_{p \min}$ or $2 t_{c \min}$ as specified in Table 1, the combined thickness of the test plates or test inserts shall be equal to the specified maximum grip length of the rivets to be tested.

The forming of the test assembly and the test procedure shall be as specified in 3.2. The evaluation of the test is dependent upon whether the test plates/test inserts can sustain the ultimate shear or tensile load of the rivet to be tested. Consequently, test recording for short rivets has the following categories:

- a) If the test plates or test inserts remain intact until the rivet fails, the maximum load recorded is the ultimate shear or tensile load until the rivet fails. If this load is equal to or above the specified minimum shear or tensile load, the rivet has passed the test.
- b) If the rivet remains intact and the test plates or inserts fail at a load equal to or above the minimum specified shear or tensile load, the rivet has passed the test. However, in this case, the ultimate shear or tensile load of the rivet cannot be determined.
- c) If the rivet remains intact and the test plates or test inserts fail at a load less than the minimum specified shear or tensile load, the acceptability of the rivet may be agreed between supplier and user.
- d) If the rivet fails before the specified minimum shear or tensile load is reached, the rivet has not passed the test.

4 Mandrel head retention capability test

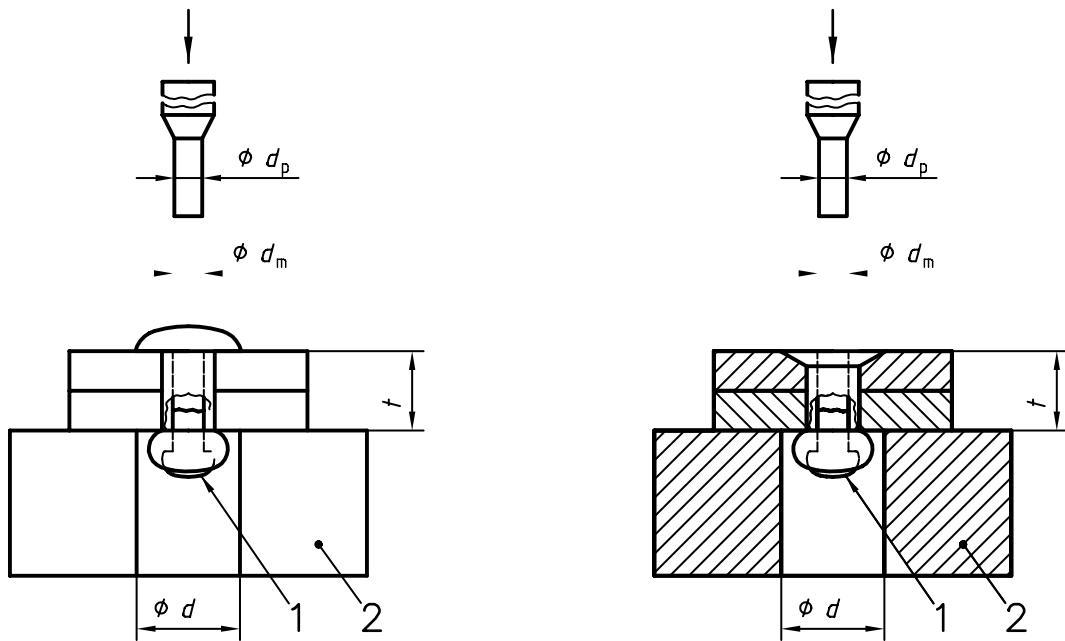
4.1 Principle of head retention capability test

The test consists of loading the mandrel axially, from the head side of a set blind rivet up to the head retention load.

NOTE This test is not applicable to closed end, drive pin, split end and slotted shank blind rivets.

4.2 Test fixture for head retention capability test

See Figure 6.



Key

- 1 Mandrel
- 2 Test block

Figure 6 — Test fixture for mandrel head retention capability test

The test assembly may comprise either one or more steel plates to give a total thickness t_{tot} equal to the specified maximum grip length of the rivet to be tested. No plate shall be less than 1,5 mm thick. The test plates shall have a width which provides a minimum circular plane with the diameter $D = 25$ mm around the axis of the specimen.

The diameter of the test clearance holes (d_{h2}) in the test plates to accommodate the rivet shall be in accordance with Table 2.

The rivet should be set with a setting tool and nose assembly in accordance with the setting procedure recommended by the blind rivet manufacturer.

The diameter of the punch d_p shall be 0,25 mm less than the mandrel diameter d_m .

The hole of the test block, on which the riveted assembly is seated, shall be able to accommodate the blind head but the diameter d_{h3} shall not be more than two times the nominal rivet diameter ($d_{h3} \leq 2 d$).

4.3 Test procedure for head retention capability test

The test fixture shall be mounted in a testing machine which shall comply with ISO 7500-1 and which is equipped with a compression punch as shown in Figure 6.

The load shall be applied to the untrimmed mandrel end, continuously and without impact, directly in line with the axis of the mandrel and shall be continued until the mandrel starts moving in relation to the rivet body. The speed of testing shall be not less than 7 mm/min nor greater than 13 mm/min. The maximum load before moving of the mandrel shall be recorded as the mandrel head retention load of the blind rivet.

5 Mandrel push out resistance test (prior to setting)

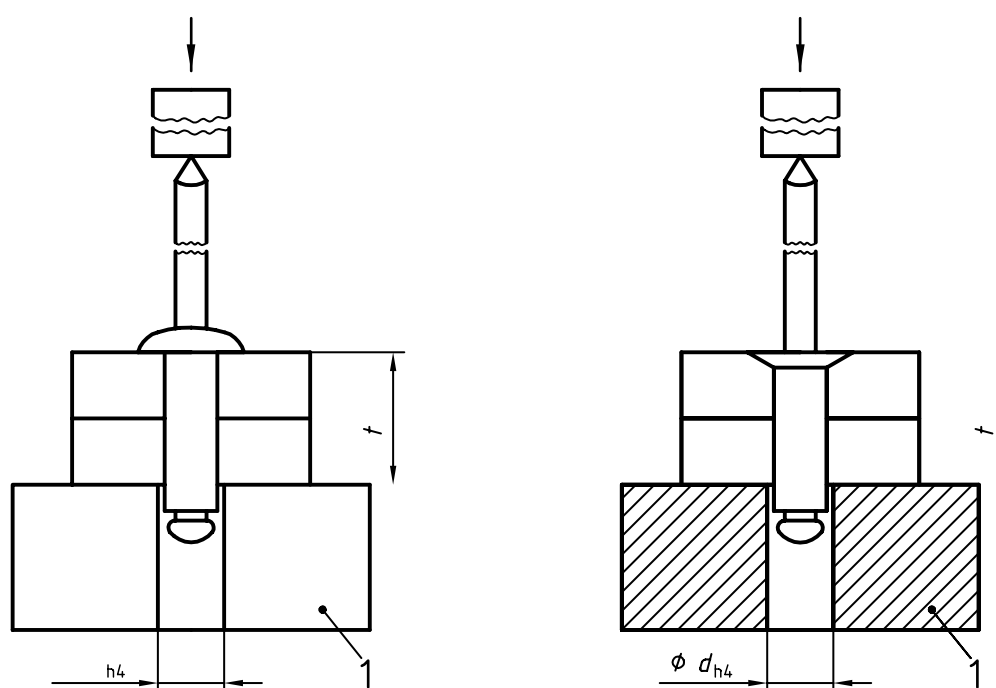
5.1 Principle of mandrel push out resistance test (prior to setting)

The test consists of loading the mandrel axially from the head side of a blind rivet until it is pushed out.

NOTE This test is not applicable to closed end and drive pin blind rivets.

5.2 Test fixture for mandrel push out resistance test (prior to setting)

See Figure 7.



Key

1 Test block

Figure 7 — Test fixture for mandrel push out resistance test

The test assembly may comprise either one or more steel plates to give a total thickness $t_{\text{tot}} \geq 10$ mm. No plate shall be less than 1,5 mm thick. The test plates shall have a width which provides a minimum circular plane with the diameter $D = 25$ mm around the axis of the specimen.

The diameter of the test clearance holes in the test plates to accommodate the rivet shall be in accordance with Table 2.

The diameter of the hole d_{h4} of the test block, on which the test plates with the rivet are seated, shall not be more than 1 mm larger than the maximum rivet shank diameter.

5.3 Test procedure for mandrel push out resistance test (prior to setting)

The test fixture shall be mounted in a testing machine which shall comply with ISO 7500-1 and which is equipped with a compression punch as shown in Figure 7.

The load shall be applied to the mandrel end, continuously and without impact, directly in line with the axis of the mandrel until the mandrel is moving in relation to the rivet body. The speed of testing shall be not less than 7 mm/min nor greater than 13 mm/min. The maximum load shall be recorded as the mandrel push out load of the blind rivet.

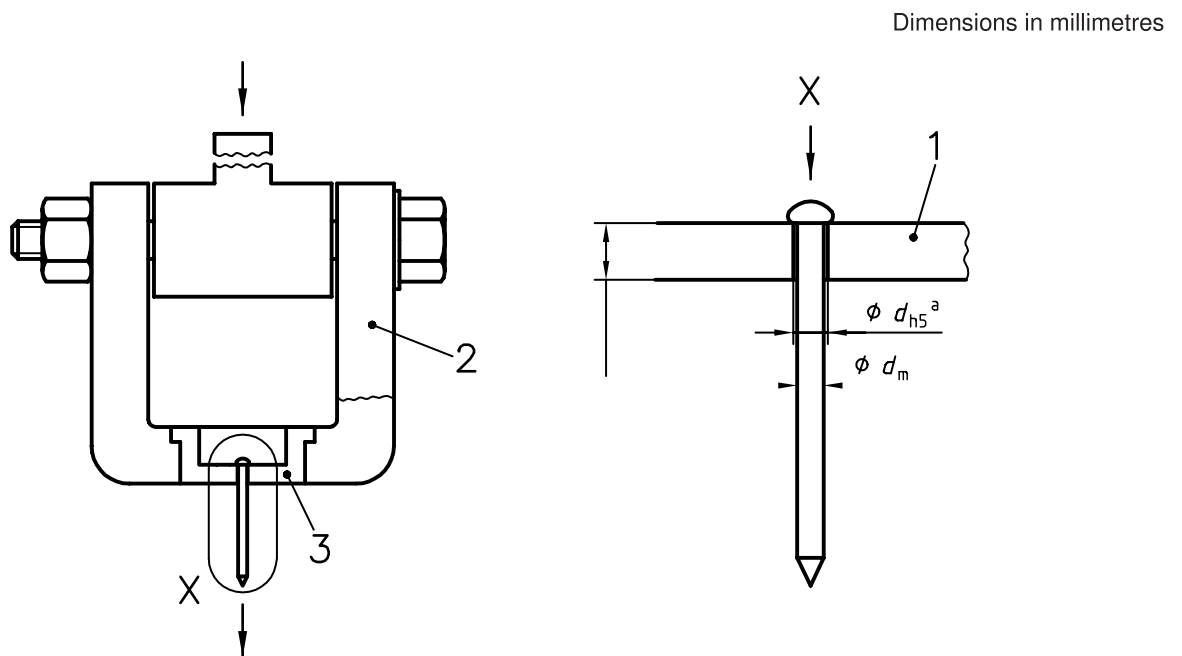
6 Mandrel break load test

6.1 Principle of the mandrel break load test

The test consists of straining the mandrel removed from the rivet body in a test fixture by a tensile load to fracture.

6.2 Test fixture for the mandrel break load test

See Figure 8.



Key

- 1 Test plate
- 2 Test fixture as given in Figure 5 (one part only)
- 3 Test insert

a Hole diameter $d_{h5} = d_m \begin{matrix} +0,4 \\ +0,2 \end{matrix}$ mm

Figure 8 — Test fixture for mandrel break load test

The test fixture shall consist of a steel test plate or test insert with a hardness of 700 HV30 minimum. The hole of the test plate or test insert to accommodate the mandrel shall be equal to the nominal diameter of the mandrel to be tested with the tolerance $\begin{matrix} +0,4 \\ +0,2 \end{matrix}$ mm. The thickness of the test plate or test insert shall be at least 5 mm but shall be sufficient to hold the test load without showing plastic deformation.

6.3 Test procedure

The test fixture shall be mounted in a testing machine which shall comply with ISO 7500-1 and which is equipped with a tool which is able to grip the mandrel.

The tensile load shall be applied to the mandrel, continuously and without impact, directly in line with the axis of the mandrel and shall be continued until the mandrel breaks. The speed of testing shall be not less than 7 mm/min nor greater than 13 mm/min. The maximum applied load shall be recorded as the mandrel break load of the blind rivet.

Annex A (informative)

Example of a suitable test fixture for tensile testing of rivets

Two test plates as shown in Figure A.1, with the plate thickness and the test clearance hole diameter according to 3.2.2, are joined together with the rivet to be tested.

The riveted joint is placed in a test fixture as shown in Figure A.1 and the test fixture placed between the compression heads of a testing machine.

Dimensions in millimetres

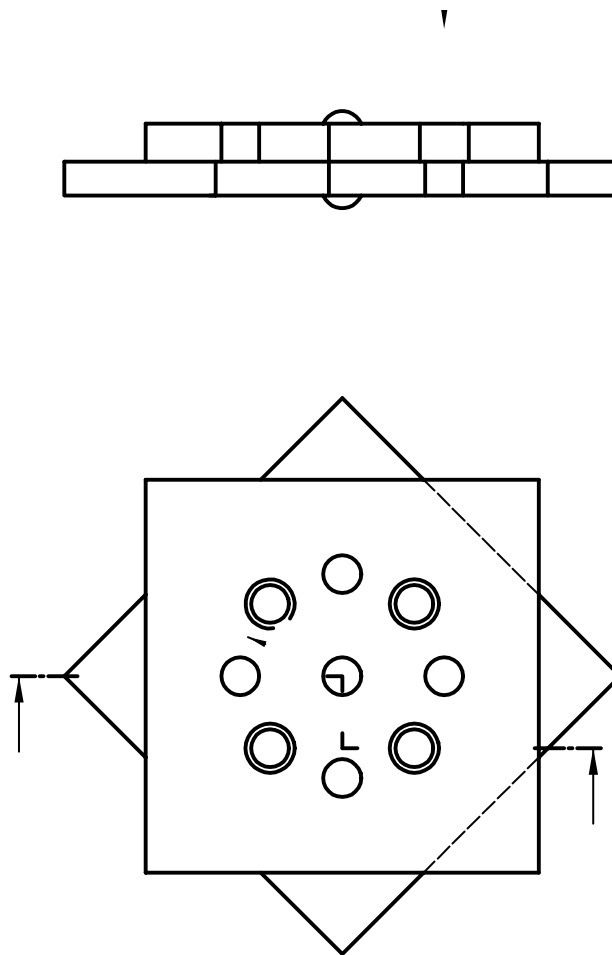


Figure A.1 — Test fixture for tensile testing of rivets

Annex ZA
(normative)

Normative references to international publications with their corresponding European publications

This European Standard incorporates, by dated or undated reference, provisions from other publications. These normative references are cited at the appropriate places in the text, and the publications are listed hereafter. For dated references, subsequent amendments to or revisions of any of these publications apply to this European Standard only when incorporated in it by amendment or revision. For undated references the latest edition of the publication referred to applies (including amendments).

NOTE Where an International Publication has been modified by common modifications, indicated by (mod.), the relevant EN/HD applies.

<u>Publication</u>	<u>Year</u>	<u>Title</u>	<u>EN/HD</u>	<u>Year</u>
ISO 7500-1	1999	Metallic materials - Verification of static uniaxial testing machines - Part 1: Tension/compression testing machines	EN ISO 7500-1	1999

BSI — British Standards Institution

BSI is the independent national body responsible for preparing British Standards. It presents the UK view on standards in Europe and at the international level. It is incorporated by Royal Charter.

Revisions

British Standards are updated by amendment or revision. Users of British Standards should make sure that they possess the latest amendments or editions.

It is the constant aim of BSI to improve the quality of our products and services. We would be grateful if anyone finding an inaccuracy or ambiguity while using this British Standard would inform the Secretary of the technical committee responsible, the identity of which can be found on the inside front cover. Tel: +44 (0)20 8996 9000. Fax: +44 (0)20 8996 7400.

BSI offers members an individual updating service called PLUS which ensures that subscribers automatically receive the latest editions of standards.

Buying standards

Orders for all BSI, international and foreign standards publications should be addressed to Customer Services. Tel: +44 (0)20 8996 9001. Fax: +44 (0)20 8996 7001. Email: orders@bsi-global.com. Standards are also available from the BSI website at <http://www.bsi-global.com>.

In response to orders for international standards, it is BSI policy to supply the BSI implementation of those that have been published as British Standards, unless otherwise requested.

Information on standards

BSI provides a wide range of information on national, European and international standards through its Library and its Technical Help to Exporters Service. Various BSI electronic information services are also available which give details on all its products and services. Contact the Information Centre. Tel: +44 (0)20 8996 7111. Fax: +44 (0)20 8996 7048. Email: info@bsi-global.com.

Subscribing members of BSI are kept up to date with standards developments and receive substantial discounts on the purchase price of standards. For details of these and other benefits contact Membership Administration. Tel: +44 (0)20 8996 7002. Fax: +44 (0)20 8996 7001. Email: membership@bsi-global.com.

Information regarding online access to British Standards via British Standards Online can be found at <http://www.bsi-global.com/bsonline>.

Further information about BSI is available on the BSI website at <http://www.bsi-global.com>.

Copyright

Copyright subsists in all BSI publications. BSI also holds the copyright, in the UK, of the publications of the international standardization bodies. Except as permitted under the Copyright, Designs and Patents Act 1988 no extract may be reproduced, stored in a retrieval system or transmitted in any form or by any means – electronic, photocopying, recording or otherwise – without prior written permission from BSI.

This does not preclude the free use, in the course of implementing the standard, of necessary details such as symbols, and size, type or grade designations. If these details are to be used for any other purpose than implementation then the prior written permission of BSI must be obtained.

Details and advice can be obtained from the Copyright & Licensing Manager. Tel: +44 (0)20 8996 7070. Fax: +44 (0)20 8996 7553. Email: copyright@bsi-global.com.