

**BS EN ISO 12759:2015**



**BSI Standards Publication**

# **Fans — Efficiency classification for fans**

**bsi.**

...making excellence a habit.™

### National foreword

This British Standard is the UK implementation of EN ISO 12759:2015. It is identical to ISO 12759:2010+A1:2013. It supersedes BS ISO 12759:2010+A1:2013, which is withdrawn.

The start and finish of text introduced or altered by amendment is indicated in the text by tags. Tags indicating changes to ISO text carry the number of the ISO amendment. For example, text altered by ISO amendment 1 is indicated by A1 A1.

The UK participation in its preparation was entrusted to Technical Committee MCE/17, Fans.

A list of organizations represented on this committee can be obtained on request to its secretary.

This publication does not purport to include all the necessary provisions of a contract. Users are responsible for its correct application.

© The British Standards Institution 2015.

Published by BSI Standards Limited 2015

ISBN 978 0 580 84235 1

ICS 23.120

### **Compliance with a British Standard cannot confer immunity from legal obligations.**

This British Standard was published under the authority of the Standards Policy and Strategy Committee on 31 May 2013.

### **Amendments/corrigenda issued since publication**

Date	Text affected
31 August 2015	This corrigendum renumbers BS ISO 12759:2010+A1:2013 as BS EN ISO 12759:2015

ICS 23.120

English Version

**Fans - Efficiency classification for fans (ISO 12759:2010,  
including Amd 1:2013)**Ventilateurs - Classification du rendement des ventilateurs  
(ISO 12759:2010, y compris Amd 1:2013)Ventilatoren - Effizienzklassifizierung für Ventilatoren (ISO  
12759:2010, einschließlich Amd 1:2013)

This European Standard was approved by CEN on 16 July 2015.

CEN members are bound to comply with the CEN/CENELEC Internal Regulations which stipulate the conditions for giving this European Standard the status of a national standard without any alteration. Up-to-date lists and bibliographical references concerning such national standards may be obtained on application to the CEN-CENELEC Management Centre or to any CEN member.

This European Standard exists in three official versions (English, French, German). A version in any other language made by translation under the responsibility of a CEN member into its own language and notified to the CEN-CENELEC Management Centre has the same status as the official versions.

CEN members are the national standards bodies of Austria, Belgium, Bulgaria, Croatia, Cyprus, Czech Republic, Denmark, Estonia, Finland, Former Yugoslav Republic of Macedonia, France, Germany, Greece, Hungary, Iceland, Ireland, Italy, Latvia, Lithuania, Luxembourg, Malta, Netherlands, Norway, Poland, Portugal, Romania, Slovakia, Slovenia, Spain, Sweden, Switzerland, Turkey and United Kingdom.

EUROPEAN COMMITTEE FOR STANDARDIZATION  
COMITÉ EUROPÉEN DE NORMALISATION  
EUROPÄISCHES KOMITEE FÜR NORMUNG**CEN-CENELEC Management Centre: Avenue Marnix 17, B-1000 Brussels**

## **European foreword**

The text of ISO 12759:2010, including Amd 1:2013, has been prepared by Technical Committee ISO/TC 117 “Fans” of the International Organization for Standardization (ISO) and has been taken over as EN ISO 12759:2015 by Technical Committee CEN/TC 156 “Ventilation for buildings” the secretariat of which is held by BSI

This European Standard shall be given the status of a national standard, either by publication of an identical text or by endorsement, at the latest by January 2016, and conflicting national standards shall be withdrawn at the latest by January 2016.

Attention is drawn to the possibility that some of the elements of this document may be the subject of patent rights. CEN [and/or CENELEC] shall not be held responsible for identifying any or all such patent rights.

According to the CEN-CENELEC Internal Regulations, the national standards organizations of the following countries are bound to implement this European Standard: Austria, Belgium, Bulgaria, Croatia, Cyprus, Czech Republic, Denmark, Estonia, Finland, Former Yugoslav Republic of Macedonia, France, Germany, Greece, Hungary, Iceland, Ireland, Italy, Latvia, Lithuania, Luxembourg, Malta, Netherlands, Norway, Poland, Portugal, Romania, Slovakia, Slovenia, Spain, Sweden, Switzerland, Turkey and the United Kingdom.

### **Endorsement notice**

The text of ISO 12759:2010, including Amd 1:2013, has been approved by CEN as EN ISO 12759:2015 without any modification.

# Contents

Page

Foreword .....	iv
Introduction.....	v
<b>1 Scope .....</b>	<b>1</b>
<b>2 Normative references .....</b>	<b>1</b>
<b>3 Terms and definitions .....</b>	<b>1</b>
<b>3.1 Fans — General .....</b>	<b>2</b>
<b>3.2 Fan or test installation categories according to the arrangement of ducting .....</b>	<b>3</b>
<b>3.3 Fans — Definitions relating to calculations.....</b>	<b>3</b>
<b>3.4 Definitions relating to fan efficiency .....</b>	<b>5</b>
<b>3.5 Fan efficiency grades .....</b>	<b>6</b>
<b>4 Symbols and units.....</b>	<b>6</b>
<b>5 Fan installation, efficiency and tolerance .....</b>	<b>7</b>
<b>5.1 General .....</b>	<b>7</b>
<b>5.2 Use of installation categories .....</b>	<b>9</b>
<b>5.3 Calculation of efficiency .....</b>	<b>9</b>
<b>5.4 Tolerances.....</b>	<b>10</b>
<b>6 Ratings.....</b>	<b>10</b>
<b>6.1 General .....</b>	<b>10</b>
<b>6.2 Bare shaft fans.....</b>	<b>10</b>
<b>6.3 Driven fans .....</b>	<b>13</b>
<b>Annex A (normative) Energy efficiency grades for bare shaft fans .....</b>	<b>20</b>
<b>Annex B (normative) Calculation method to determine efficiency of component parts .....</b>	<b>21</b>
<b>Annex C (informative) Variation of fan performance between installation categories .....</b>	<b>26</b>
<b>Annex D (informative) Input power calculation for driven fans at design point.....</b>	<b>27</b>
<b>Annex E (informative) Selection of fans for best efficiency .....</b>	<b>35</b>
<b>Annex F (informative) Determination of efficiency grade for a driven fan.....</b>	<b>38</b>
<b>Annex G (informative) Explanatory note .....</b>	<b>40</b>
<b>Bibliography.....</b>	<b>42</b>

## **Foreword**

ISO (the International Organization for Standardization) is a worldwide federation of national standards bodies (ISO member bodies). The work of preparing International Standards is normally carried out through ISO technical committees. Each member body interested in a subject for which a technical committee has been established has the right to be represented on that committee. International organizations, governmental and non-governmental, in liaison with ISO, also take part in the work. ISO collaborates closely with the International Electrotechnical Commission (IEC) on all matters of electrotechnical standardization.

International Standards are drafted in accordance with the rules given in the ISO/IEC Directives, Part 2.

The main task of technical committees is to prepare International Standards. Draft International Standards adopted by the technical committees are circulated to the member bodies for voting. Publication as an International Standard requires approval by at least 75 % of the member bodies casting a vote.

Attention is drawn to the possibility that some of the elements of this document may be the subject of patent rights. ISO shall not be held responsible for identifying any or all such patent rights.

ISO 12759 was prepared by Technical Committee ISO/TC 117, *Fans*.

## Introduction

The last decade has seen not only an escalation in the price, but also an increasing recognition of the finite life of many of the fossil fuels in use. There is also a belief that climatic change is due to an increase in the levels of carbon dioxide in the atmosphere. This has led to many nations reviewing methods of energy generation and usage.

Therefore, there is a need to promote energy efficiency in order to maintain economic growth. This requires better selection of equipment by users and better design of this equipment by manufacturers.

Fans of all types are used for ventilation and air conditioning, process engineering (drying, pneumatic conveying), combustion air supply and agriculture, etc. Indeed, the energy usage by fans has been calculated as nearly 20 % of worldwide demand.

The fan industry is of a global nature, with a considerable degree of exporting and licensing. To ensure that defined fan performance characteristics are common throughout the world, a series of International Standards has been developed. It is the belief of the industry that there is a need for the recognition of minimum efficiency standards. To encourage their implementation, a classification system is proposed which incorporates a series of efficiency bands. With improvements in technology and manufacturing processes, the minimum efficiency levels can be reviewed and increased over time.

This International Standard can be used by legislators or regulatory bodies for defining future energy saving targets.





# Fans — Efficiency classification for fans

## 1 Scope

This International Standard establishes a classification of fan efficiency for all fan types driven by motors with an electrical input power range from 0,125 kW to 500 kW. This International Standard is applicable to bare shaft and driven fans, as well as fans integrated into products. Fans integrated into products are measured as stand-alone fans.

This International Standard is not applicable to:

- a) fans for smoke and emergency smoke extraction;
- b) fans for industrial processes;
- c) fans for automotive application, trains and planes;
- d) fans for potentially explosive atmospheres;
- e) box fans, powered roof ventilators and air curtains;
- f) jet fans for use in car parks and tunnel ventilation.

## 2 Normative references

The following referenced documents are indispensable for the application of this document. For dated references, only the edition cited applies. For undated references, the latest edition of the referenced document (including any amendments) applies.

ISO 5801:2007, *Industrial fans — Performance testing using standardized airways*

ISO 13348:2007, *Industrial fans — Tolerances, methods of conversion and technical data presentation*

ISO 13349:2010, *Fans — Vocabulary and definitions of categories*

IEC 60034-2-1, *Rotating electrical machines — Part 2-1: Standard methods for determining losses and efficiency from tests (excluding machines for traction vehicles)*

IEC 60034-30, *Rotating electrical machines — Part 30: Efficiency classes of single-speed, three-phase, cage-induction motors*

## 3 Terms and definitions

For the purposes of this document, the terms and definitions given in ISO 13349 and the following apply.

NOTE See, in particular, ISO 13349:2010, Tables 4 and 5, as well as the associated equations in Clause 5 of this International Standard and ISO 5801.

### 3.1 Fans — General

#### 3.1.1

##### fan

rotary bladed machine which receives mechanical energy and utilizes it by means of one or more impellers fitted with blades to maintain a continuous flow of air or other gas passing through it and whose work per unit mass does not normally exceed 25 kJ/kg

NOTE 1 Fans are defined according to their installation category, function, fluid path and operating conditions.

NOTE 2 Adapted from ISO 13349:2010, definition 3.1.1.

#### 3.1.2

##### fan size

maximum impeller tip diameter,  $D$ , on which the design of the fan is based

#### 3.1.3

##### drive

(transmission and motor/control system) device used to power the fan, including motor, mechanical transmission and motor/control system

NOTE 1 Examples of mechanical transmission are belt drive and couplings.

NOTE 2 Examples of a motor or control system are variable frequency controller and electronic commutator.

#### 3.1.4

##### bare shaft fan

fan without drives, attachments or accessories (appurtenance)

See Figure 1.

NOTE Adapted from ISO 13349:2010, definition 3.1.2.

#### 3.1.5

##### driven fan

one or more impellers fitted to or connected to a motor, with or without a drive mechanism, a housing and a means of variable speed drive

See Figure 2.

NOTE Adapted from ISO 13349:2010, definition 3.1.3.

#### 3.1.6

##### air

abbreviated term for the expression "air or other gas"

[ISO 13349:2010, definition 3.2]

#### 3.1.7

##### standard air

atmospheric air having a density of exactly 1,2 kg/m<sup>3</sup>

NOTE 1 Atmospheric air at a temperature of 16 °C, a pressure of 100 000 Pa and a relative humidity of 65 %, has a density of 1,2 kg/m<sup>3</sup>, but these conditions do not form part of the definition.

NOTE 2 Adapted from ISO 13349:2010, definition 3.3.

## 3.2 Fan or test installation categories according to the arrangement of ducting

See Figure 3 and ISO 13349.

### 3.2.1

#### installation category A

installation with free inlet and free outlet

### 3.2.2

#### installation category B

installation with free inlet and ducted outlet

### 3.2.3

#### installation category C

installation with ducted inlet and free outlet

### 3.2.4

#### installation category D

installation with ducted inlet and ducted outlet

## 3.3 Fans — Definitions relating to calculations

### 3.3.1

#### average density at fan inlet

$\rho_1$

fluid density calculated from the absolute pressure and the static temperature

### 3.3.2

#### atmospheric pressure

$p_a$

pressure, measured with respect to absolute zero pressure, which is exerted at a point at rest relative to the air around it

### 3.3.3

#### fan pressure

$p_f$

difference between the stagnation pressure at the fan outlet and the stagnation pressure at the fan inlet

### 3.3.4

#### fan static pressure

$p_{sf}$

conventional quantity defined as the fan pressure minus the fan dynamic pressure at the fan outlet corrected by the Mach factor

### 3.3.5

#### absolute stagnation pressure at a point

$p_{sg}$

absolute pressure which would be measured at a point in a flowing gas, if it were brought to rest via an isentropic process

### 3.3.6

#### conventional dynamic pressure at a point

$p_d$

pressure calculated from the velocity and the density of the air at the point

**3.3.7**  
**fan dynamic pressure at the fan outlet**

$p_{d2}$   
conventional dynamic pressure at the fan outlet calculated from the mass flow rate, the average gas density at the outlet and the outlet area

**3.3.8**  
**mass flow rate**

$q_m$   
mean value, over time, of the mass of air which passes through the specified airway cross-section per unit of time

**3.3.9**  
**inlet volume flow rate**

$q_{v1}$   
mass flow rate at the inlet divided by the corresponding mean value, over time, of the average density at the inlet

**3.3.10**  
**fan work per unit mass**

$W_m$   
increase in mechanical energy per unit mass of fluid passing through the fan

**3.3.11**  
**compressibility coefficient**

$k_p$   
ratio of the mechanical work done by the fan on the air to the work that would be done on an incompressible fluid with the same mass flow, inlet density and pressure ratio

**3.3.12**  
**fan air power**

$P_u$   
conventional output power which is the product of the mass flow rate and the fan work per unit mass, or the product of the inlet volume flow rate, the compressibility coefficient and the fan pressure

**3.3.13**  
**fan static air power**

$P_{us}$   
conventional output power which is the product of the mass flow rate and the fan static work per unit mass, or the product of the inlet volume flow rate, the compressibility coefficient and the fan static pressure

**3.3.14**  
**impeller power**

$P_r$   
mechanical power supplied to the fan impeller

NOTE This is applicable to direct driven impellers which are open (as in, for example, a plenum fan) or enclosed in a housing.

**3.3.15**  
**nominal motor power**

$P_N$   
rated output power of an electric motor

**3.3.16**  
**fan shaft power**

$P_a$   
mechanical power supplied to the fan shaft

### 3.3.17

#### motor output power

$P_o$

shaft power output of the motor or other prime mover

### 3.3.18

#### motor input power

$P_e$

electrical power supplied to the fan's motor

### 3.3.19

#### drive/control electrical input power

$P_{ed}$

electrical power supplied to the motor's drive or control

## 3.4 Definitions relating to fan efficiency

### 3.4.1

#### fan impeller efficiency

$\eta_r$

fan air power divided by the impeller power,  $P_r$

### 3.4.2

#### fan shaft efficiency

$\eta_a$

fan air power divided by the fan shaft power,  $P_a$

### 3.4.3

#### overall efficiency

$\eta_e$

fan air power divided by the input power for the fan and motor

### 3.4.4

#### overall static efficiency

$\eta_{es}$

fan static air power divided by the input power for the fan and motor

### 3.4.5

#### overall efficiency drive

$\eta_{ed}$

(transmission and motor/control system) fan air power divided by the input power for the fan and motor combination which include transmission or variable speed controls to take account of all losses within the fan assembly

### 3.4.6

#### overall static efficiency drive

$\eta_{esd}$

(transmission and motor/control system) fan static air power divided by the input power for the fan and motor combination which include transmission or variable speed controls to take account of all losses within the fan assembly

NOTE 1 The efficiency can be referred to the installation category (see Figure 3 and ISO 13349).

NOTE 2 Efficiency can be expressed as a proportion of unity. To obtain a per cent value, multiply the efficiency result by 100.

**3.4.7**  
**optimum efficiency**

$\eta_{\text{opt}}$   
maximum efficiency achieved on the fan air characteristic with all operational parameters, except the air system resistance, being fixed

**3.4.8**  
**compensation factor**

$C_c$   
factor, used in the determination of efficiencies for fans incorporating or fitted with variable speed drives

See Figure 5.

**3.5 Fan efficiency grades**

**3.5.1**  
**fan efficiency grade**

**FEG**  
efficiency grade for a bare shaft fan

NOTE The definitions given in 3.4.1 and 3.4.2 can apply.

**3.5.2**  
**fan motor efficiency grade**

**FMEG**  
efficiency grade for a driven fan

NOTE The definitions given in 3.4.3, 3.4.4, 3.4.5 and 3.4.6 can apply.

**3.5.3**  
**grade number**

$N_G$   
integer of the FMEG

**4 Symbols and units**

For the purposes of this document, the symbols and primary units in Table 1 for the parameters listed apply.

**Table 1 — Symbols and units**

Symbol	Description	Unit
$C_c$	Compensation factor to account for energy savings at part load	—
$C_m$	Compensation factor to account for suboptimal matching of components	—
$D$	Maximum impeller tip diameter (fan size)	mm
$k_p$	Compressibility coefficient	—
$N_G$	Grade number (integer) of the FMEG	—
$P_a$	Fan shaft power	W
$P_b$	Power loss in bearings	W
$P_e$	Motor input power	W
$P_{\text{ed}}$	Drive/control electrical input power	W
$P_N$	Nominal motor power	W
$P_o$	Motor output power	W

Table 1 (continued)

Symbol	Description	Unit
$P_r$	Impeller power	W
$P_{sf}$	Specific fan power	kW/(m <sup>3</sup> /s) or W/(l/s)
$P_u$	Fan air power	W
$P_{us}$	Fan static air power	W
$p_a$	Atmospheric pressure	Pa
$p_d$	Conventional dynamic pressure at a point	Pa
$p_{d2}$	Fan dynamic pressure at the fan outlet	Pa
$p_f$	Fan pressure	Pa
$p_{sf}$	Fan static pressure	Pa
$p_{sg}$	Absolute stagnation pressure at a point	Pa
$q_m$	Mass flow rate	kg/s
$q_{v1}$	Inlet volume flow rate	m <sup>3</sup> /s
$W_m$	Fan work per unit mass	J/kg
$\eta_a$	Fan shaft efficiency	Expressed as a decimal
$\eta_b$	Fan bearing efficiency	Expressed as a decimal
$\eta_c$	Variable speed drive efficiency	Expressed as a decimal
$\eta_e$	Overall efficiency for fans without drives	Expressed as a decimal
$\eta_{ed}$	Overall efficiency for fans with drives	Expressed as a decimal
$\eta_{es}$	Overall static efficiency for fans without drives	Expressed as a decimal
$\eta_{esd}$	Overall static efficiency for fans with drives	Expressed as a decimal
$\eta_m$	Motor efficiency	Expressed as a decimal
$\eta_{opt}$	Optimum efficiency	Expressed as a decimal
$\eta_r$	Fan impeller efficiency	Expressed as a decimal
$\eta_T$	Drive mechanism (transmission efficiency)	Expressed as a decimal
$\rho_1$	Average density at fan inlet	kg/m <sup>3</sup>
NOTE	Efficiency in per cent (%) divided by 100 equals the efficiency, expressed as a decimal.	

## 5 Fan installation, efficiency and tolerance

### 5.1 General

Fans range from the purpose-built single fan to the series-produced certified ranges, which are manufactured in large quantities. A fan can be an impeller on a shaft with no drive mechanism attached (i.e. bare shaft fan) (see Figure 1), or a motor attached to a drive system attached to an impeller within an impeller housing. In that case, it can be supplemented by a volume control, such as a variable speed control or guide vanes (i.e. driven fan) (see Figure 2).

The variation in design has led to efficiency being defined in a number of ways to suit the demands of the fan type and the market.

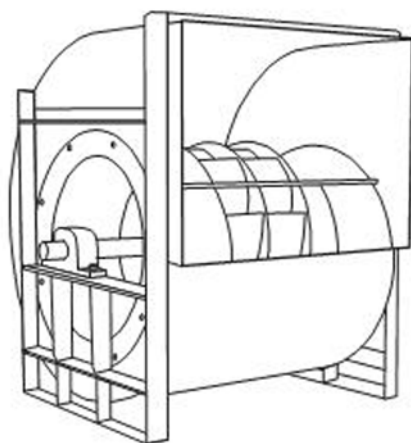
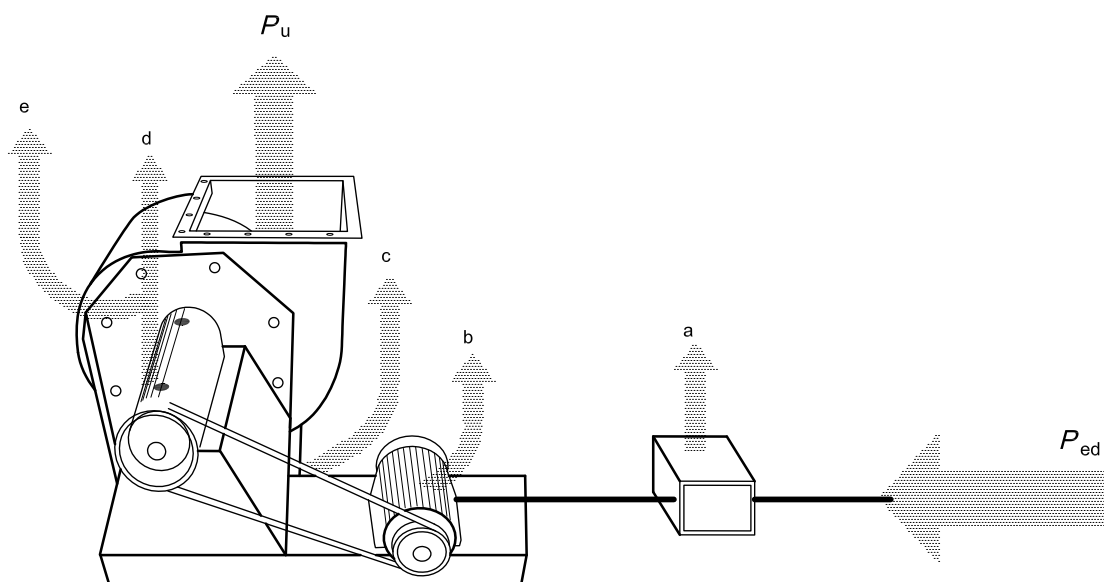


Figure 1 — Example of a bare shaft centrifugal fan



**Key**

$P_u$  fan air power

$P_{ed}$  drive/control electrical input power

- a Variable speed device loss (heat). [The variable speed device can be fitted or not (see Clause 6).]
- b Motor losses (heat).
- c Belt losses (heat).
- d Bearing losses (heat).
- e Impeller and casing aerodynamic losses (heat).

Figure 2 — Example of a driven fan showing power losses



## 5.2 Use of installation categories

Fan efficiency ratings are frequently specific for each standardized test installation category.

If a fan is designed for a single installation category, its rated efficiency grade shall refer to that particular test installation category, and this shall be clearly identified.

If a fan is suitable for use with different installation categories, the fan efficiency grade shall be based on the efficiency ratings referring to the most suitable category, and this shall be clearly identified.

To determine the operating point of the fan, four installation categories shall be considered (see Figure 3). For details of test methods, see the following clauses of ISO 5801:2007:

- a) category A installations — Clause 30;
- b) category B installations — Clause 31;
- c) category C installations — Clause 32;
- d) category D installations — Clause 33.

The standardized installation category used for rating the fan shall be clearly stated (see Annex C).

The motor input power and motor output power may be measured or determined using the methods given in ISO 5801. Installation category E is not included in this International Standard.

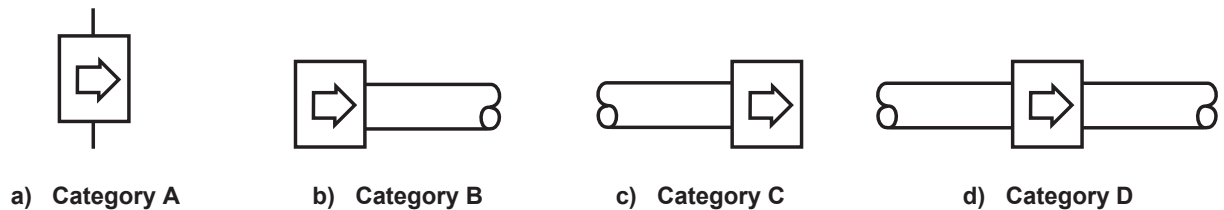


Figure 3 — Installation categories

## 5.3 Calculation of efficiency

**5.3.1** The fan air power and efficiency are calculated from fan work per unit mass in accordance with ISO 5801:2007, 14.8.1.

**5.3.2** For a bare shaft fan where bearing losses are excluded, the efficiency is given by Equation (1):

$$\eta_r = P_u / P_r \quad (1)$$

**5.3.3** For a bare shaft fan where bearing losses are included, the efficiency is given by Equation (2):

$$\eta_a = P_u / P_a \quad (2)$$

**5.3.4** For a driven fan that does not include a variable speed drive, where the input power can be determined, the overall efficiency is given by Equation (3) or (4):

$$\eta_e = P_u / P_e \quad (3)$$

$$\eta_{es} = P_{us} / P_e \quad (4)$$

**5.3.5** For a driven fan that includes a variable speed drive, where the input power can be determined, the overall efficiency is given by Equation (5) or (6):

$$\eta_{ed} = C_c \times P_u / P_{ed} \quad (5)$$

$$\eta_{esd} = C_c \times \frac{P_{us}}{P_{ed}} \quad (6)$$

NOTE The use of fan pressure or fan static pressure determines the appropriate efficiency grade according to the installation category.

## **5.4 Tolerances**

At each stage of the fan design and manufacturing cycle, including conversion from prototype performance data or calculation, fabrication and testing of a purpose-designed fan, finite uncertainties prevail and acceptance tolerances shall be applied.

Any test for fan performance is subject to error, and the range within which these testing errors can be expected to lie is defined numerically as the uncertainty of measurement. In addition, the true performance of the fan (if it can be ascertained) would be found to differ from that of another nominally identical fan, owing to inevitable variations in manufacture. The expected range of this manufacturing variation shall be added to the uncertainty of measurement to determine the minimum tolerance required for a performance specification.

The tolerances given in ISO 13348:2007, Clause 5 (performance tolerances for purpose-designed fans and series-produced non-certified fans), and ISO 13348:2007, Clause 6 (performance tolerances for series-produced fans in certified ratings programmes), shall apply.

## **6 Ratings**

### **6.1 General**

The variation of fan type and drive option leads to efficiency being derived in different ways. For grading purposes, the efficiency has been defined as a function of the size for bare shaft fans and as a function of input power for driven fans. Direct comparison shall not be made between driven fans rating (FMEG) and bare shaft fans rating (FEG).

If the efficiency of the bare shaft fan is required on a driven unit (see 6.2), Figure 4 remains applicable. In this case, the motor efficiency shall be obtained from a dynamometer test or by calibrated motor performance curves, conforming to IEC 60034-2-1.

This clause gives guidance on the optimum efficiency (best efficiency point) levels which are achievable by the fan types addressed in this International Standard. The minimum levels of acceptability are dependent on consultation between regulator and manufacturer's representatives or local legislation, where this exists.

The efficiency grade for a fan is based on its performance characteristics at a speed not higher than the maximum safe operating speed to obtain its best efficiency point.

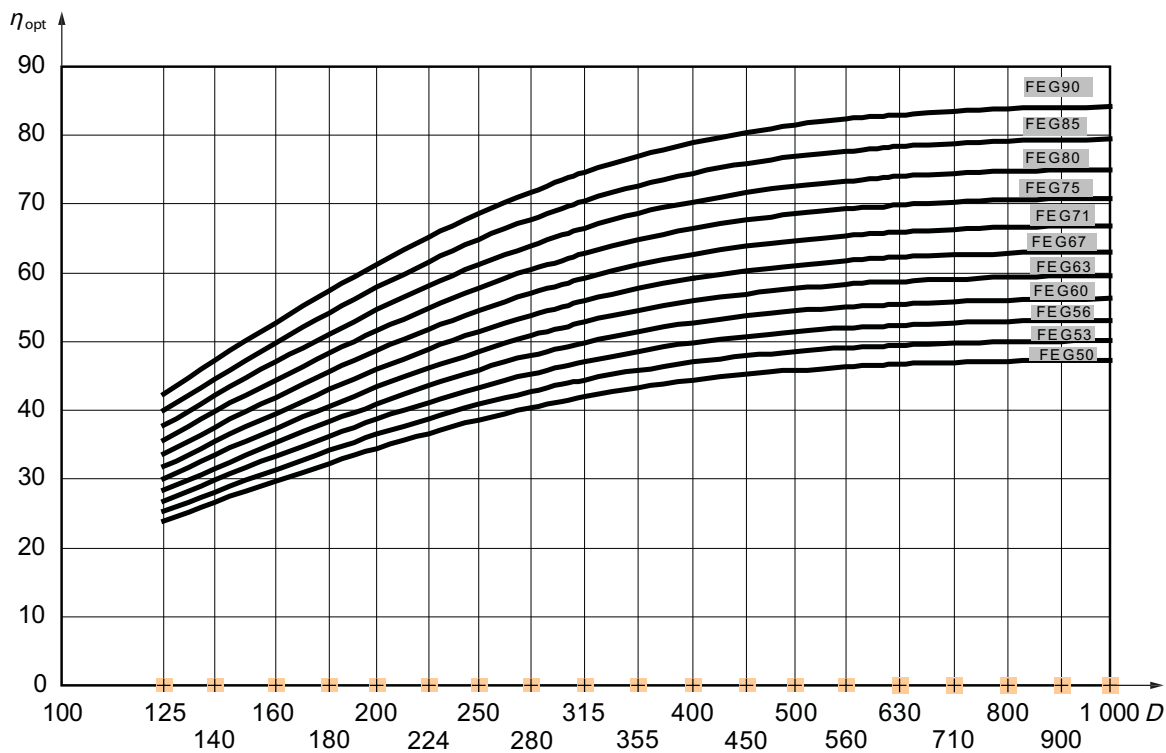
### **6.2 Bare shaft fans**

The relationship between the FEG and fan size is shown in Figure 4. While the fan efficiency is a function of the operating point of the fan, the efficiency grades are based on the optimum (peak) efficiency of the fan as the characteristic of fan energy efficiency.

A fan belongs to an FEG grade (e.g. FEG85), if its efficiency, at best efficiency duty and maximum speed, is higher than the calculated value, at the impeller diameter, along the boundary, calculated in accordance with

Annex A from the level of the immediately lower efficiency grade (e.g. 80 from FEG80), and equal to or lower than the value on the boundary calculated for the nominal efficiency grade (e.g. FEG85).

In simple terms, a fan belongs to an FEG grade (e.g. FEG85) if its efficiency, at best efficiency duty and maximum speed, is below the curve according to its designation, but above the next curve beneath (e.g. FEG80).



**Key**

$D$  fan size (mm)

$\eta_{opt}$  optimum (peak) fan efficiency (%)

**Figure 4 — FEG for bare shaft fans**

The incremental efficiency grades for bare shaft fans are given in Table 2. An explanation of how to determine the FEG is given in the notes to Table 2. The FEG grade for a given fan size is assigned when the fan optimum (peak) efficiency is equal or lower than the value of efficiency in the row for that label and higher than the value of efficiency in the next row down.

Table 2 — Fan efficiency grades (FEG) for bare shaft fans

FEG grade <sup>b,c</sup>	Optimum (peak) fan efficiency <sup>a</sup>												
	%												
	for fan size, $D_r^{d,e}$ (mm) of:												
	125	132	140	150	160	170	180	190	200	212	224	236	250
FEG90	Optimum (peak) fan efficiency above the FEG85 grade												
FEG85	42,5	44,8	47,2	50,1	52,7	55,2	57,4	59,4	61,3	63,3	65,2	66,9	68,6
FEG80	40,1	42,3	44,6	47,3	49,8	52,1	54,2	56,1	57,9	59,8	61,6	63,1	64,8
FEG75	37,8	39,9	42,1	44,7	47,0	49,2	51,1	53,0	54,6	56,5	58,1	59,6	61,2
FEG71	35,7	37,7	39,8	42,2	44,4	46,4	48,3	50,0	51,6	53,3	54,9	56,3	57,8
FEG67	33,7	35,6	37,5	39,8	41,9	43,8	45,6	47,2	48,7	50,3	51,8	53,1	54,5
FEG63	31,8	33,6	35,4	37,6	39,5	41,4	43,0	44,6	46,0	47,5	48,9	50,2	51,5
FEG60	30,1	31,7	33,4	35,5	37,3	39,0	40,6	42,1	43,4	44,8	46,2	47,3	48,6
FEG56	28,4	29,9	31,6	33,5	35,2	36,9	38,3	39,7	41,0	42,3	43,6	44,7	45,9
FEG53	26,8	28,2	29,8	31,6	33,3	34,8	36,2	37,5	38,7	40,0	41,1	42,2	43,3
FEG50	25,3	26,7	28,1	29,8	31,4	32,9	34,2	35,4	36,5	37,7	38,8	39,8	40,9
	23,9	25,2	26,6	28,2	29,7	31,0	32,3	33,4	34,5	35,6	36,7	37,6	38,6
	for fan size, $D_r^{d,e}$ (mm) of:												
	265	280	300	315	335	355	375	400	425	450	475	500	530
FEG90	Optimum (peak) fan efficiency above the FEG85 grade												
FEG85	70,3	71,8	73,5	74,6	75,9	77,0	77,9	78,9	79,7	80,4	81,0	81,5	81,9
FEG80	66,4	67,8	69,4	70,4	71,7	72,7	73,6	74,5	75,3	75,9	76,5	76,9	77,4
FEG75	62,7	64,0	65,5	66,5	67,6	68,6	69,5	70,3	71,1	71,7	72,2	72,6	73,0
FEG71	59,2	60,4	61,8	62,8	63,9	64,8	65,6	66,4	67,1	67,7	68,1	68,5	68,9
FEG67	55,9	57,0	58,4	59,3	60,3	61,2	61,9	62,7	63,3	63,9	64,3	64,7	65,1
FEG63	52,7	53,8	55,1	55,9	56,9	57,7	58,4	59,2	59,8	60,3	60,7	61,1	61,4
FEG60	49,8	50,8	52,0	52,8	53,7	54,5	55,2	55,9	56,5	56,9	57,3	57,7	58,0
FEG56	47,0	48,0	49,1	49,9	50,7	51,5	52,1	52,8	53,3	53,8	54,1	54,5	54,8
FEG53	44,4	45,3	46,4	47,1	47,9	48,6	49,2	49,8	50,3	50,7	51,1	51,4	51,7
FEG50	41,9	42,8	43,8	44,4	45,2	45,9	46,4	47,0	47,5	47,9	48,2	48,5	48,8
	39,5	40,4	41,3	42,0	42,7	43,3	43,8	44,4	44,8	45,2	45,5	45,8	46,1
	for fan size, $D_r^{d,e}$ (mm) of:												
	560	600	630	670	710	750	800	850	900	950	1 000		
FEG90	Optimum (peak) fan efficiency above the FEG85 grade												
FEG85	82,3	82,7	83,0	83,3	83,5	83,7	83,8	84,0	84,1	84,1	84,1		
FEG80	77,7	78,1	78,4	78,6	78,8	79,0	79,1	79,3	79,3	79,4	79,4		
FEG75	73,4	73,8	74,0	74,2	74,4	74,6	74,7	74,8	74,9	75,0	75,0		
FEG71	69,3	69,6	69,8	70,1	70,3	70,4	70,5	70,6	70,7	70,8	70,8		
FEG67	65,4	65,7	65,9	66,1	66,3	66,5	66,6	66,7	66,8	66,8	66,8		
FEG63	61,7	62,1	62,2	62,4	62,6	62,7	62,9	63,0	63,0	63,1	63,1		
FEG60	58,3	58,6	58,8	59,0	59,1	59,2	59,4	59,4	59,5	59,5	59,6		
FEG56	55,0	55,3	55,5	55,7	55,8	55,9	56,0	56,1	56,2	56,2	56,2		
FEG53	51,9	52,2	52,4	52,5	52,7	52,8	52,9	53,0	53,0	53,1	53,1		
FEG50	49,0	49,3	49,4	49,6	49,7	49,8	49,9	50,0	50,1	50,1	50,1		
	46,3	46,5	46,7	46,8	47,0	47,0	47,1	47,2	47,3	47,3	47,3		

The fan sizes in bold print in this table are in the R20 Series of preferred numbers (see ISO 13351). The values of efficiencies are calculated for fan sizes in the preferred numbers in the R40 Series. If this method is used for a direct driven fan not having the shaft and bearings integral to the fan, the fan efficiency is the impeller efficiency.

<sup>a</sup> The optimum (peak) fan efficiency may be calculated from the fan total pressure (see ISO 5801:2007, Annex A).

<sup>b</sup> The FEG grade for a given fan size is assigned when the fan optimum (peak) efficiency is equal to or lower than the value of efficiency in the row for that grade and higher than the value of efficiency in the next row down.

<sup>c</sup> No grade shall be considered for fans with optimum (peak) efficiency below FEG50.

<sup>d</sup> The fan size is the maximum impeller tip diameter,  $D$ , in millimetres.

<sup>e</sup> For any fan size larger than 1 000 mm, the values in the column for the size 1 000 mm apply.

To evaluate the efficiency of a bare shaft fan combined with or fitted to a drive system, the method given in Annex B shall be used. As previously stated, no direct comparison shall be made between this method and that stated in 6.3.

## 6.3 Driven fans

### 6.3.1 General

The efficiency grades for driven fans are shown in Figures 6, 7 and 8; the variation of optimum efficiency and FMEG grade is shown as a function of input power and design.

A fan belongs to a given FMEG grade (e.g. FMEG55) if its best (optimum) efficiency at full speed is equal to or greater than the value calculated according to Annex F (see 6.3.2, 6.3.3 and 6.3.4), for the nominal efficiency grade level, e.g. FMEG55, and relevant input power. Any efficiency line can be interpolated from those shown in Figures 6, 7 and 8.

In cases where a volume control device is necessary, a variable speed drive is the best option, as it is the most efficient method for adjustment to different operating points. Other options for volume control, such as guide vanes and control valves, are less efficient.

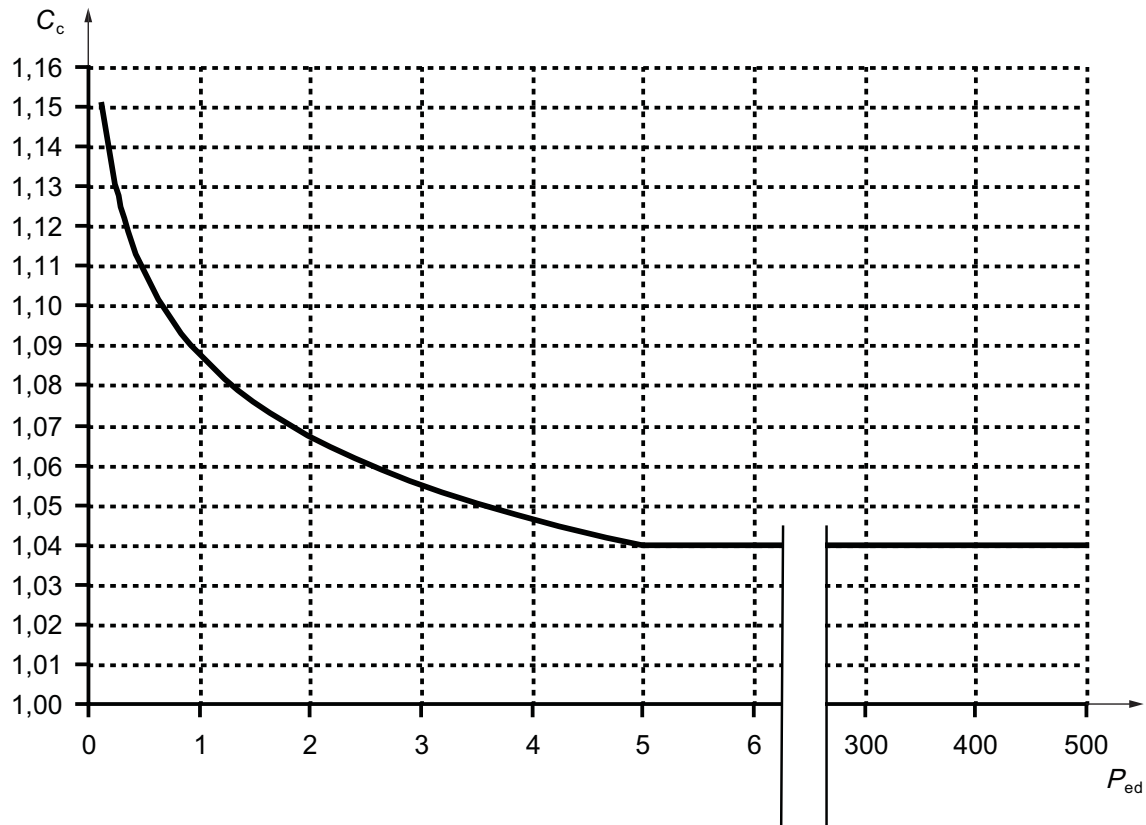
Many fans are required for duties less than their maximum. The most efficient way of achieving this, dependent on the system characteristic, is by speed reduction.

The curves of FMEGs are based on impeller and motor combinations. If a control device is used, the efficiency data can be revised by the correction values, compensation factor, for controls given in Table 3 and Figure 5. This is intended to put systems with variable speed drives on the same level as fixed speed systems because it recognizes that there are energy-saving opportunities.

NOTE Built-in means constructed as a non-detachable part of a larger unit and also being an essential and permanent part of the unit.

**Table 3 — Compensation factor for fans fitted with variable speed drives**

Drive/control electrical input power $P_{ed}$	Compensation factor $C_c$
< 5 kW	$-0,03 \times \ln(P_{ed}) + 1,088$
$\geq 5$ kW	1,04



**Key**

- $P_{ed}$  drive/control electrical input power (kW)
- $C_c$  compensation factor

**Figure 5 — Compensation factor for fans fitted with variable speed drives**

**6.3.2 Axial, forward curved or radial-bladed centrifugal driven fans**

The graph in Figure 6 and Table 4 are generated by Equations (7), (8), (9) and (10).

a) For input power of less than or equal to 10 kW:

- 1) fan and motor

$$\eta_{opt} = 2,74 \times \ln(P_e) - 6,33 + N_G \tag{7}$$

- 2) fan, motor and drives

$$\eta_{opt} = 2,74 \times \ln(P_{ed}) - 6,33 + N_G \tag{8}$$

b) For input power greater than 10 kW:

- 1) fan and motor

$$\eta_{opt} = 0,78 \times \ln(P_e) - 1,88 + N_G \tag{9}$$

- 2) fan, motor and drives

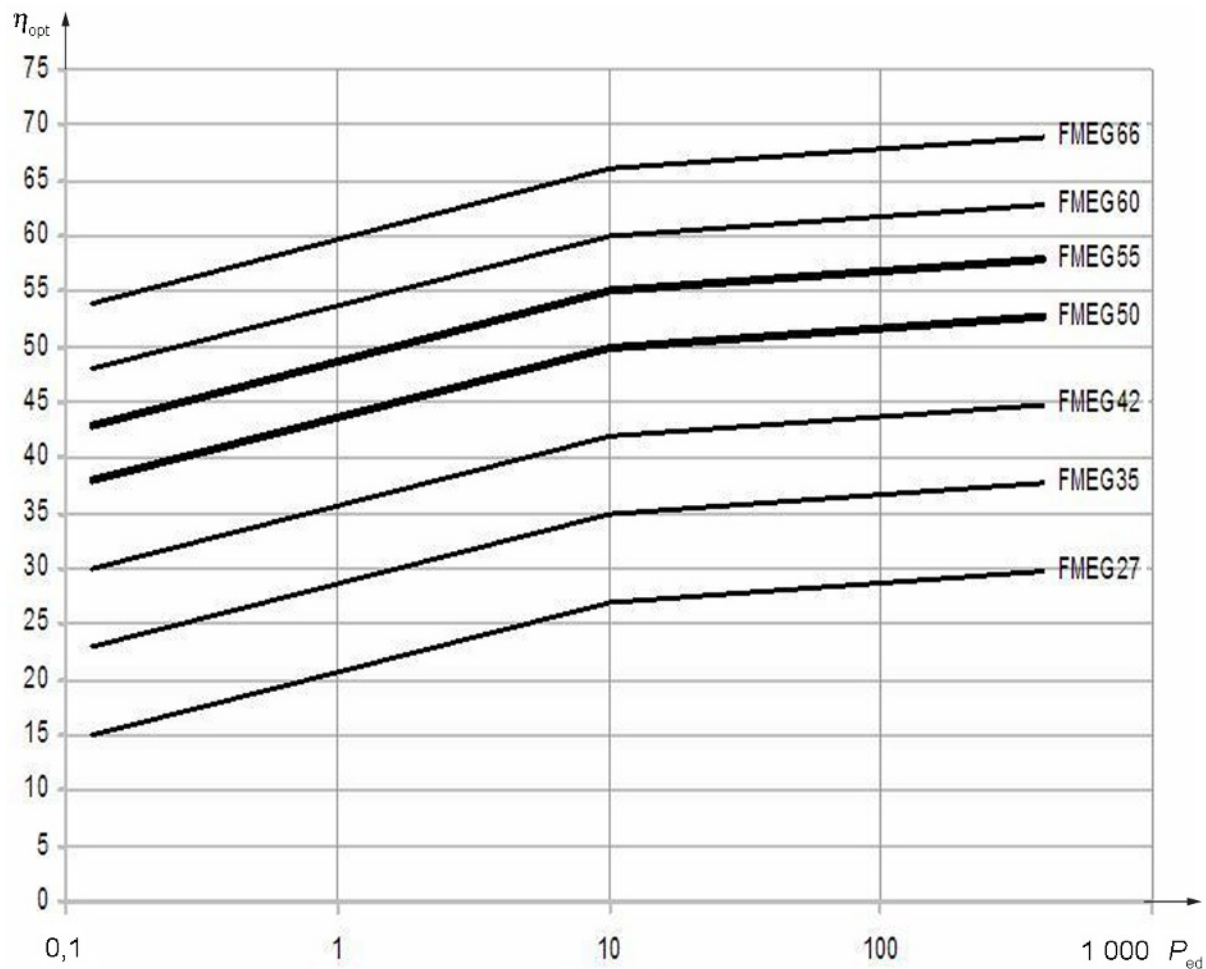
$$\eta_{opt} = 0,78 \times \ln(P_{ed}) - 1,88 + N_G \tag{10}$$

where

$P_e$  is the input power, in kilowatts;

$P_{ed}$  is the drive/control electrical input power, in kilowatts;

$N_G$  is the grade number (integer) of the FMEG, e.g.  $N_G = 40$  for FMEG40.



**Key**

$P_{ed}$  defined input power (kW)

$\eta_{opt}$  optimum efficiency (best efficiency point) (%)

**Figure 6 — Efficiency grades for axial, forward curved or radial-bladed centrifugal driven fans**

Table 4 — Efficiency grades for axial, forward curved or radial-bladed centrifugal driven fans

Input power kW	0,125	0,3	1,0	2,5	5	8	10	20	60	160	300	375	500
Efficiency grade	Optimum efficiency (best efficiency point) %												
FMEG27	15,0	17,4	20,7	23,2	25,1	26,4	27,0	27,5	28,3	29,1	29,6	29,7	30,0
FMEG31	19,0	21,4	24,7	27,2	29,1	30,4	31,0	31,5	32,3	33,1	33,6	33,7	34,0
FMEG35	23,0	25,4	28,7	31,2	33,1	34,4	35,0	35,5	36,3	37,1	37,6	37,7	38,0
FMEG39	27,0	29,4	32,7	35,2	37,1	38,4	39,0	39,5	40,3	41,1	41,6	41,7	42,0
FMEG42	30,0	32,4	35,7	38,2	40,1	41,4	42,0	42,5	43,3	44,1	44,6	44,7	45,0
FMEG46	34,0	36,4	39,7	42,2	44,1	45,4	46,0	46,5	47,3	48,1	48,6	48,7	49,0
FMEG50	38,0	40,4	43,7	46,2	48,1	49,4	50,0	50,5	51,3	52,1	52,6	52,7	53,0
FMEG53	41,0	43,4	46,7	49,2	51,1	52,4	53,0	53,5	54,3	55,1	55,6	55,7	56,0
FMEG55	43,0	45,4	48,7	51,2	53,1	54,4	55,0	55,5	56,3	57,1	57,6	57,7	58,0
FMEG58	46,0	48,4	51,7	54,2	56,1	57,4	58,0	58,5	59,3	60,1	60,6	60,7	61,0
FMEG60	48,0	50,4	53,7	56,2	58,1	59,4	60,0	60,5	61,3	62,1	62,6	62,7	63,0
FMEG62	50,0	52,4	55,7	58,2	60,1	61,4	62,0	62,5	63,3	64,1	64,6	64,7	65,0
FMEG64	52,0	54,4	57,7	60,2	62,1	63,4	64,0	64,5	65,3	66,1	66,6	66,7	67,0
FMEG66	54,0	56,4	59,7	62,2	64,1	65,4	66,0	66,5	67,3	68,1	68,6	68,7	69,0

### 6.3.3 Centrifugal backward-bladed fans (with and without housing) and mixed-flow driven fans

The graph in Figure 7 and Table 5 are generated by Equations (11), (12), (13) and (14):

a) For input power of less than or equal to 10 kW:

1) fan and motor

$$\eta_{\text{opt}} = 4,56 \times \ln(P_e) - 10,5 + N_G \quad (11)$$

2) fan, motor and drives

$$\eta_{\text{opt}} = 4,56 \times \ln(P_{\text{ed}}) - 10,5 + N_G \quad (12)$$

b) For input power greater than 10 kW:

1) fan and motor

$$\eta_{\text{opt}} = 1,1 \times \ln(P_e) - 2,6 + N_G \quad (13)$$

2) fan, motor and drives

$$\eta_{\text{opt}} = 1,1 \times \ln(P_{\text{ed}}) - 2,6 + N_G \quad (14)$$

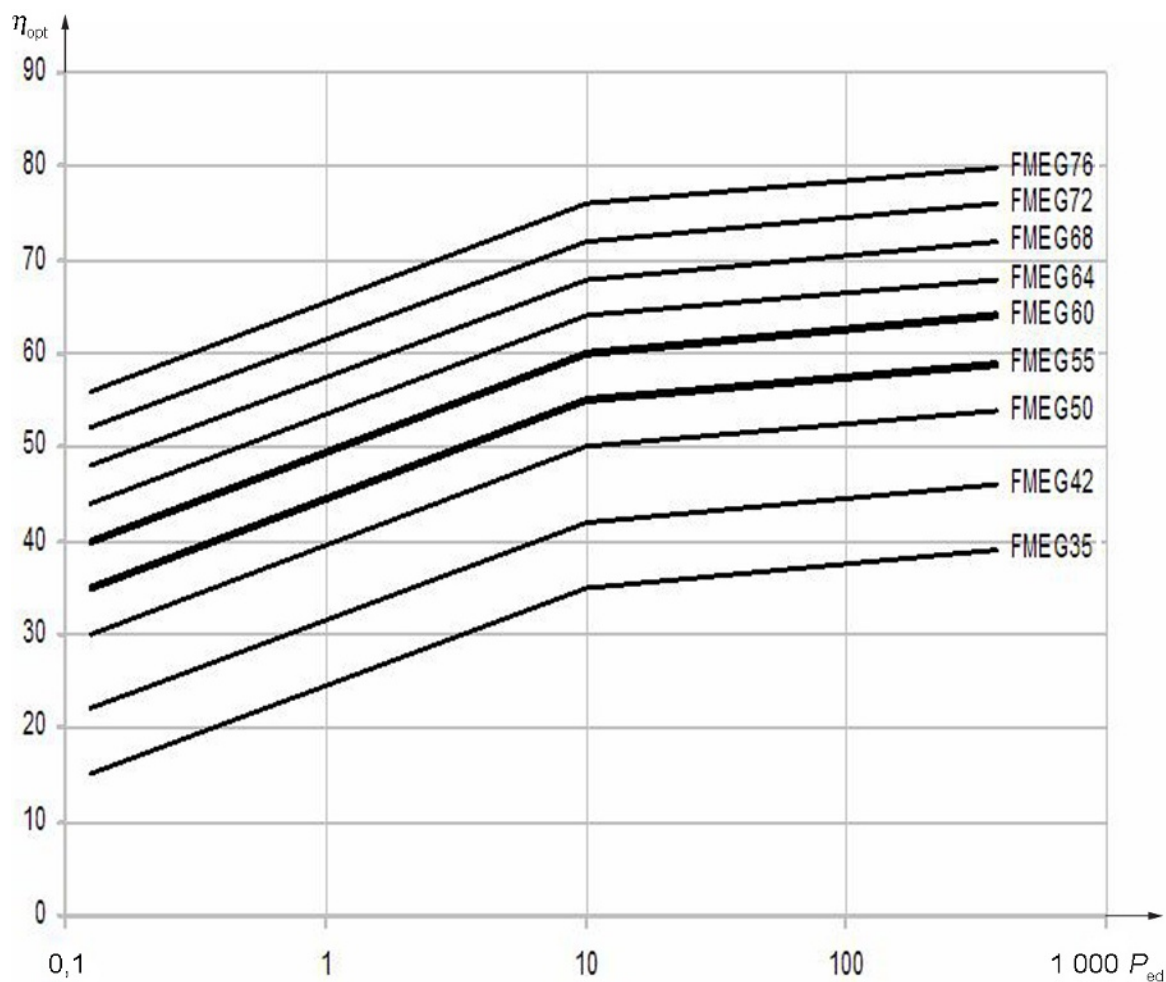
where

$P_e$  is the input power, in kilowatts;

$P_{\text{ed}}$  is the drive/control electrical input power, in kilowatts;

$N_G$  is the grade number (integer) of the FMEG, e.g.  $N_G = 40$  for FMEG40.





**Key**

$P_{ed}$  defined input power (kW)

$\eta_{opt}$  optimum efficiency (best efficiency point) (%)

**Figure 7 — Efficiency grades for centrifugal backward-bladed fans (with and without housing) and mixed-flow driven fans**

Table 5 — Efficiency grades for centrifugal backward-bladed fans (with and without housing) and mixed-flow driven fans

Input power kW	0,125	0,3	1,0	2,5	5	8	10	20	60	160	300	375	500
Efficiency grade	Optimum efficiency (best efficiency point) %												
FMEG35	15,0	19,0	24,5	28,7	31,8	34,0	35,0	35,7	36,9	38,0	38,7	38,9	39,2
FMEG39	19,0	23,0	28,5	32,7	35,8	38,0	39,0	39,7	40,9	42,0	42,7	42,9	43,2
FMEG42	22,0	26,0	31,5	35,7	38,8	41,0	42,0	42,7	43,9	45,0	45,7	45,9	46,2
FMEG46	26,0	30,0	35,5	39,7	42,8	45,0	46,0	46,7	47,9	49,0	49,7	49,9	50,2
FMEG50	30,0	34,0	39,5	43,7	46,8	49,0	50,0	50,7	51,9	53,0	53,7	53,9	54,2
FMEG53	33,0	37,0	42,5	46,7	49,8	52,0	53,0	53,7	54,9	56,0	56,7	56,9	57,2
FMEG55	35,0	39,0	44,5	48,7	51,8	54,0	55,0	55,7	56,9	58,0	58,7	58,9	59,2
FMEG58	38,0	42,0	47,5	51,7	54,8	57,0	58,0	58,7	59,9	61,0	61,7	61,9	62,2
FMEG60	40,0	44,0	49,5	53,7	56,8	59,0	60,0	60,7	61,9	63,0	63,7	63,9	64,2
FMEG62	42,0	46,0	51,5	55,7	58,8	61,0	62,0	62,7	63,9	65,0	65,7	65,9	66,2
FMEG64	44,0	48,0	53,5	57,7	60,8	63,0	64,0	64,7	65,9	67,0	67,7	67,9	68,2
FMEG66	46,0	50,0	55,5	59,7	62,8	65,0	66,0	66,7	67,9	69,0	69,7	69,9	70,2
FMEG68	48,0	52,0	57,5	61,7	64,8	67,0	68,0	68,7	69,9	71,0	71,7	71,9	72,2
FMEG70	50,0	54,0	59,5	63,7	66,8	69,0	70,0	70,7	71,9	73,0	73,7	73,9	74,2
FMEG72	52,0	56,0	61,5	65,7	68,8	71,0	72,0	72,7	73,9	75,0	75,7	75,9	76,2
FMEG74	54,0	58,0	63,5	67,7	70,8	73,0	74,0	74,7	75,9	77,0	77,7	77,9	78,2
FMEG76	56,0	60,0	65,5	69,7	72,8	75,0	76,0	76,7	77,9	79,0	79,7	79,9	80,2

### 6.3.4 Cross-flow driven fans

The graph in Figure 8 and Table 6 are generated by Equations (15), (16) and (17).

a) For input power of less than or equal to 10 kW:

1) fan and motor

$$\eta_{\text{opt}} = 1,14 \times \ln(P_e) - 2,6 + N_G \quad (15)$$

2) fan, motor and drives

$$\eta_{\text{opt}} = 1,14 \times \ln(P_{\text{ed}}) - 2,6 + N_G \quad (16)$$

b) For input power greater than 10 kW: fan and motor, and fan, motor and drives

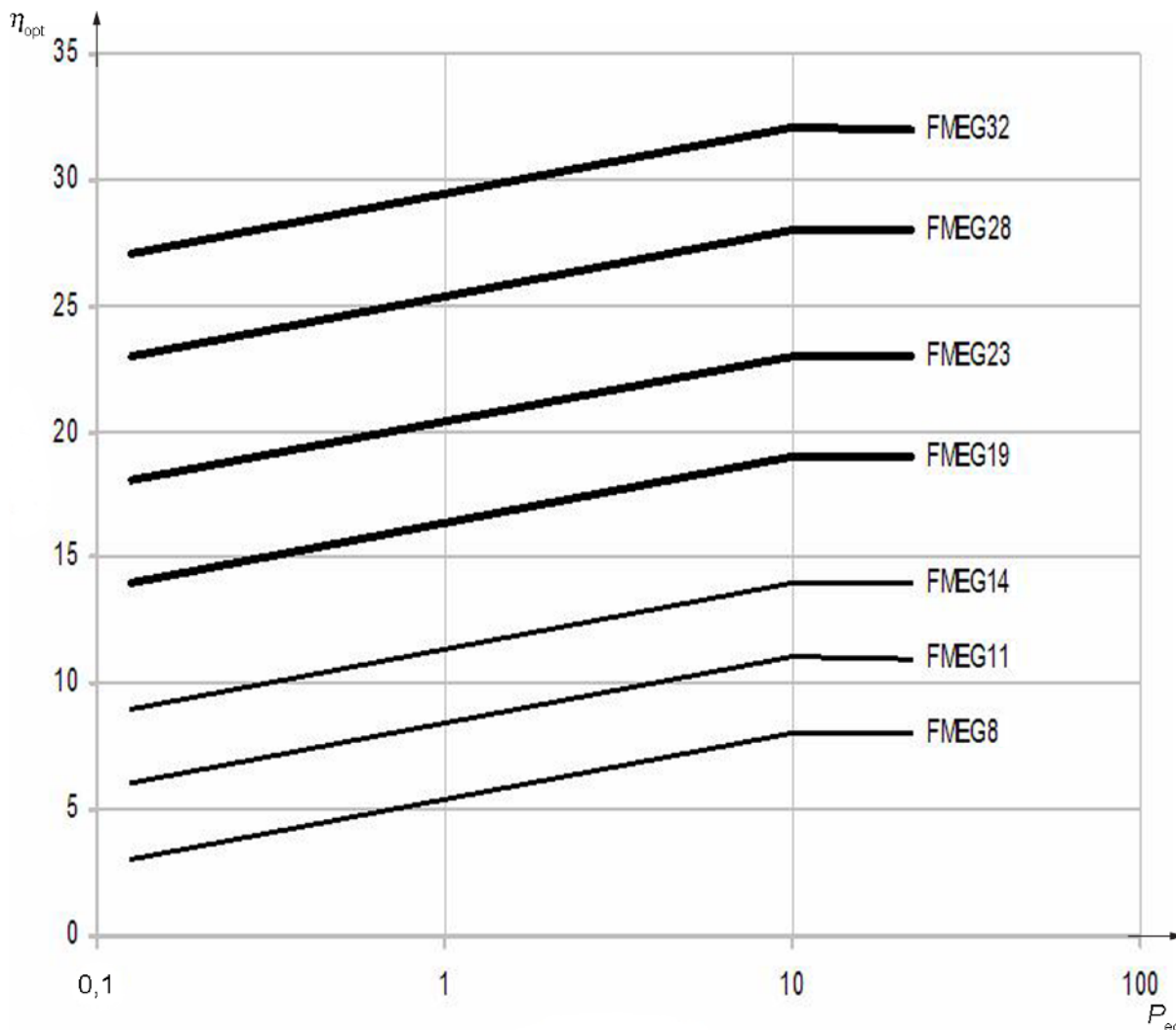
$$\eta_{\text{opt}} = N_G \quad (17)$$

where

$P_e$  is the motor input power, in kilowatts;

$P_{\text{ed}}$  is the drive/control electrical input power, in kilowatts;

$N_G$  is the integer of the FMEG, e.g.  $N_G = 10$  for FMEG10.



**Key**

$P_{ed}$  defined input power (kW)

$\eta_{opt}$  optimum efficiency (best efficiency point) (%)

**Figure 8 — Cross-flow driven fan efficiency grades**

**Table 6 — Cross-flow driven fan efficiency grades**

Input power kW	0,125	0,3	0,50	0,8	1,0	2,0	3,0	4,0	5,0	8,0	10	16	22
Efficiency grade	Optimum efficiency (best efficiency point) %												
FMEG08	3,0	4,0	4,6	5,1	5,4	6,2	6,7	7,0	7,2	7,8	8,0	8,0	8,0
FMEG11	6,0	7,0	7,6	8,1	8,4	9,2	9,7	10,0	10,2	10,8	11,0	11,0	11,0
FMEG14	9,0	10,0	10,6	11,1	11,4	12,2	12,7	13,0	13,2	13,8	14,0	14,0	14,0
FMEG19	14,0	15,0	15,6	16,1	16,4	17,2	17,7	18,0	18,2	18,8	19,0	19,0	19,0
FMEG23	18,0	19,0	19,6	20,1	20,4	21,2	21,7	22,0	22,2	22,8	23,0	23,0	23,0
FMEG28	23,0	24,0	24,6	25,1	25,4	26,2	26,7	27,0	27,2	27,8	28,0	28,0	28,0
FMEG32	27,0	28,0	28,6	29,1	29,4	30,2	30,7	31,0	31,2	31,8	32,0	32,0	32,0

## Annex A (normative)

### Energy efficiency grades for bare shaft fans

Equation (A.1) is used for calculation of the upper limit efficiencies of the grade FEG85 using the fan size,  $D_r$ , as the independent variable:

$$\eta_{\text{opt } 85_D^{\text{upp}}} = k_0 + \left[ 81 + \frac{D}{k_1} - \left( \frac{D}{k_2} \right)^2 \right]^{0,5} - 112 \exp \left( -\frac{D}{k_3} \right) \quad (\text{A.1})$$

where

$\eta_{\text{opt } 85_D^{\text{upp}}}$  is the efficiency value at the upper limit of FEG85 for a given fan size;

$D$  is the fan size (impeller diameter), in millimetres;

$k_0, k_1, k_2, k_3$  are constants (see Table A.1).

**Table A.1 — Constants for defining the upper efficiency limit of FEG85**

Constant	Constant definition
$D_0$	1 016 (exactly)
$k_0$	$10 \left[ 1 + \left( \frac{37}{40} \right) \right] - 15 + 112 \exp \left( -\frac{D_0}{k_3} \right)$ <p>where <math>D_0</math> is the base fan size (impeller diameter), 1 016 mm</p>
$k_1$	$\frac{793,75}{15^2} = 3,5277$
$k_2$	$\frac{1270}{15} = 84,66$
$k_3$	113,92 (exactly)

It is advisable to use the constants as they are defined, rather than using their rounded values.

For a given fan size,  $D_r$ , the FEG<sub>d</sub> upper limits are calculated from the FEG85 $D_r$  upper limit [use Equation (A.1)] as numbers in a geometrical series with a quotient of  $q$ .

$$q = 10^{\left( \frac{1}{40} \right)} = 10^{-0,025} = 0,944\ 060\ 88 \text{ (rounded)} \quad (\text{A.2})$$

For example, the FEG85 upper limit for size 1 000 mm is 84,136 06 and the upper limit of the grade next down, i.e. FEG80, is calculated as  $84,136\ 06 \times q = 79,429\ 56$ . The next grade down is FEG75 and its upper limit is calculated as  $79,429\ 56 \times q = 74,986\ 34$ , etc.

## Annex B (normative)

### Calculation method to determine efficiency of component parts

#### B.1 General

The efficiency of the drive end components, which are not included in the scope of delivery, can only be estimated.

The estimated efficiency values can either be those certified by the manufacturers of suitable and commercially available components or be the default values listed in this annex.

To encourage the improvement of the efficiency of the components offered as a complement to bare shaft fans, actual efficiency values provided by component manufacturers shall preferably be used instead of default values.

If the fan is supplied without a motor that drives it, the fan efficiency shall be calculated at the impeller's optimum efficiency point,  $\eta_{opt}$ , using Equation (B.1):

$$\eta_e = \eta_r \times \eta_m \times \eta_T \times \eta_c \times C_m \times C_c \quad (\text{B.1})$$

where

$\eta_e$  is the overall efficiency;

$\eta_r$  is the optimal fan impeller efficiency according to  $P_{u(s)}/P_a$ , as given in ISO 5801;

$\eta_m$  is the motor efficiency;

$\eta_T$  is the drive mechanism (transmission efficiency);

$\eta_c$  is the variable speed drive efficiency;

$C_m$  is the compensation factor to account for matching of components = 0,9;

$C_c$  is part load compensation factor.

#### B.2 Motor

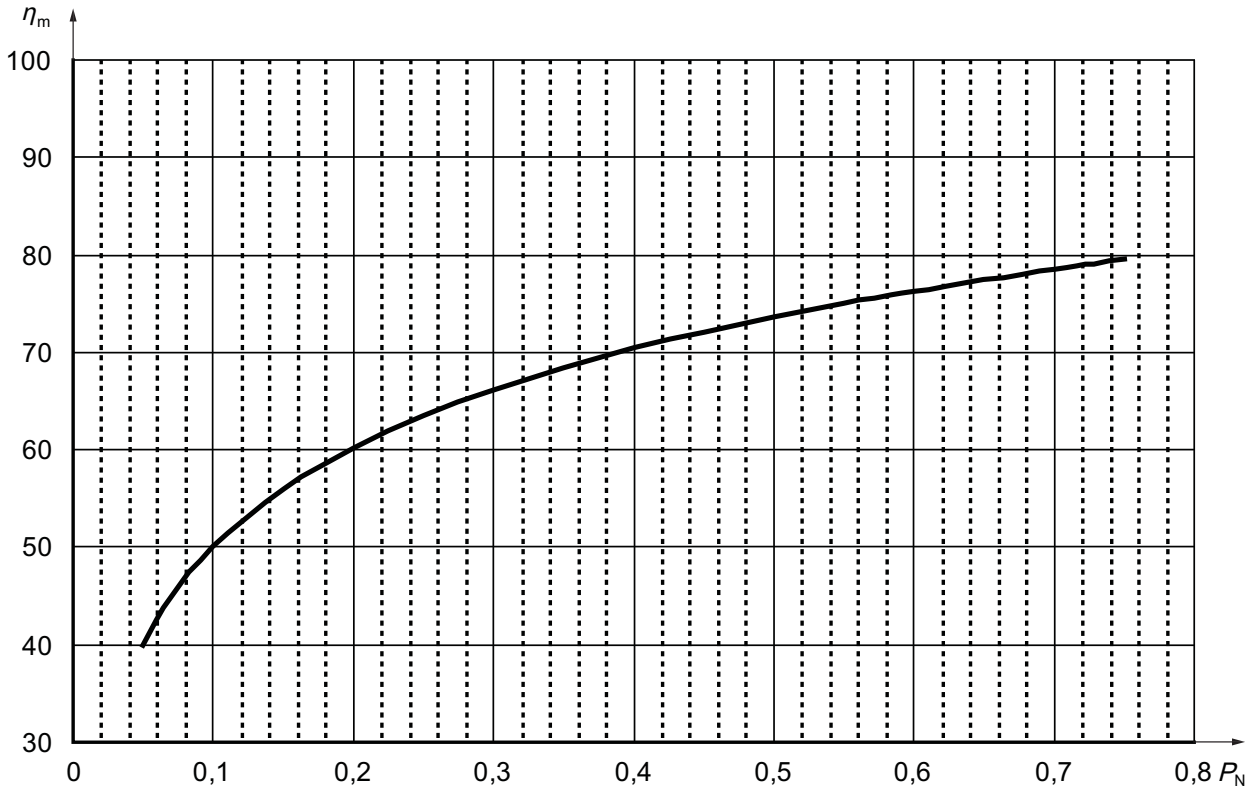
Motor efficiency,  $\eta_m$ , shall be estimated if the motor is not included in the fan product.

The estimated efficiency for three-phase motors shall be the minimum specified by valid legal regulations or if not in existence, the minimum specified for class IE1 in accordance with IEC 60034-30.

The estimated efficiency for all other induction motors, rated below 0,75 kW, shall be calculated using Equation (B.2):

$$\eta_m = 0,146 2 \times \ln(P_N) + 0,838 1 \quad (\text{B.2})$$

where  $P_N$  is the nominal motor power, in kilowatts.



**Key**  
 $P_N$  nominal motor power (kW)  
 $\eta_m$  motor efficiency (%)

**Figure B.1 — Default efficiency values for motors below 0,75 kW**

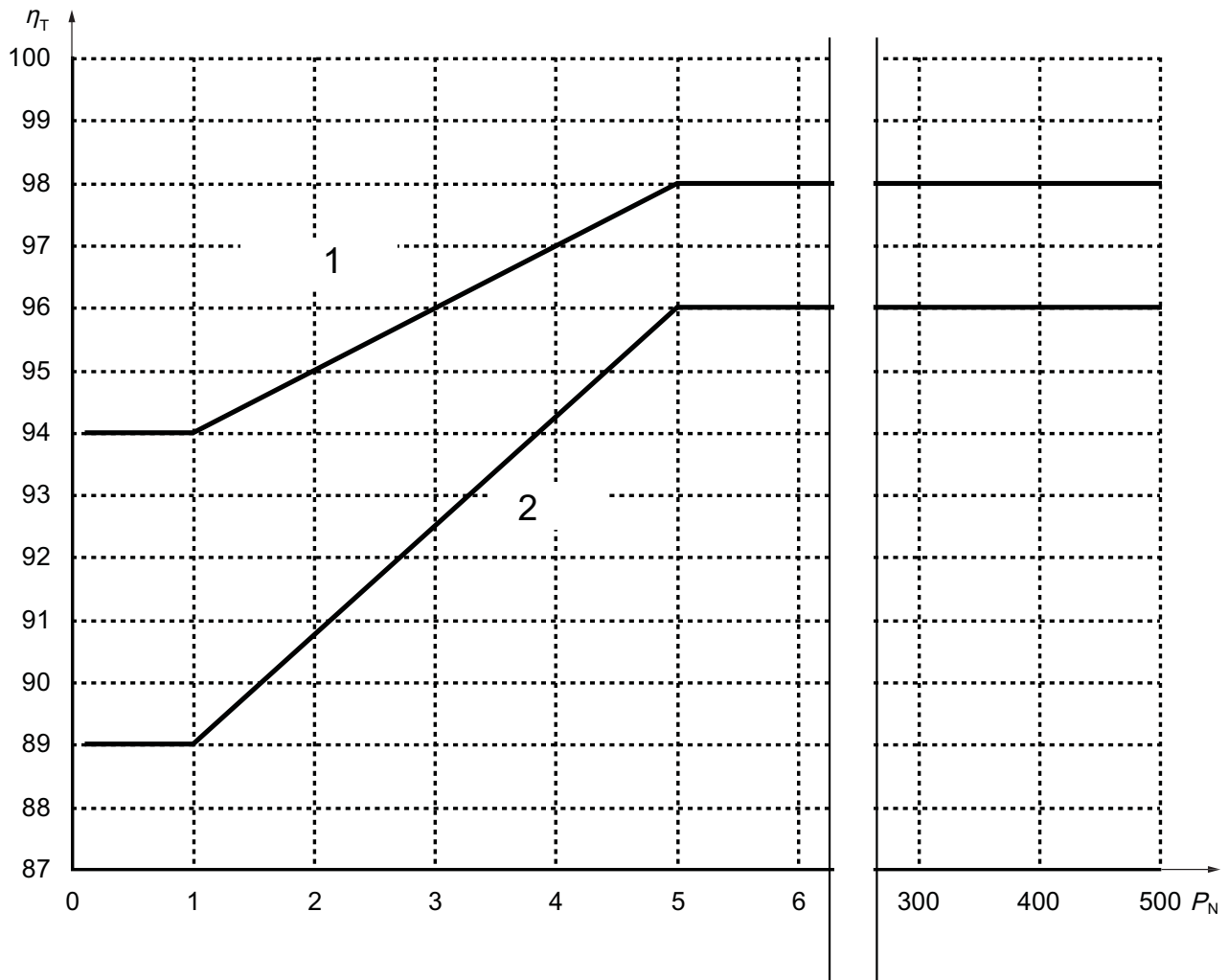
**B.3 Transmission**

If the fan has a direct drive, i.e. the impeller is mounted directly on the motor shaft, a transmission efficiency,  $\eta_T$ , of 100 % shall be assumed. An allowance shall be made for bearing losses, flexible coupling, etc., if these form part of the transmission system; these may be determined using ISO 5801.

If the fan has a belt drive, the default values are given in Table B.1.

**Table B.1 — Default values for belt drive efficiency**

Nominal motor power	$\eta_T$ (V-belts)	$\eta_T$ (flat belts)
$P_N < 1$ kW	0,89	0,94
$1 \text{ kW} < P_N < 5$ kW	$0,0175 \times P_N + 0,8725$	$0,01 \times P_N + 0,93$
$P_N > 5$ kW	0,96	0,98



**Key**

- $P_N$  nominal motor power (kW)
- $\eta_T$  drive mechanism (transmission efficiency) (%)
- 1 flat belt
- 2 V-belt

**Figure B.2 — Default efficiency values for belt drives**

**B.4 Controls**

Variable speed drive (VSD) efficiency,  $\eta_c$ , shall be that declared by the manufacturer. The compensation factor shall only be those given in 6.3. If a VSD is not used,  $\eta_c$  and  $C_c$  shall be removed from Equation (B.1).

**B.5 Worked example for a forward curved centrifugal fan**

Legislation could require a fan to exceed a driven fan efficiency line, for a centrifugal forward curved fan, of FMEG35. The proposed fan has not been measured as a complete assembly and comprises of fan, motor and V-belt drive mechanism. The impeller efficiency,  $\eta_r$ , is 60 %, the fan air power,  $P_U$ , at point of optimum efficiency is 1,125 kW, and has been measured using installation category D. The motor used is a 2,2 kW

4-pole motor of efficiency classification IE2, in accordance with IEC 60034-30. A variable speed drive, with an efficiency of 95 %, is part of the fan.

Using Equation (B.1),  $\eta_e = \eta_r \times \eta_m \times \eta_T \times \eta_c \times C_m \times C_c$

where

$\eta_r$  is 0,60 (60 %);

$\eta_m$  is 0,843 (see B.2, IE2, 84,3 %);

$\eta_T$  is 0,911 (see B.3);

$\eta_c$  is 0,95 (see B.4);

$C_m$  is 0,90 (see B.1);

$C_c$  is 1,064 (see 6.3);

then  $\eta_e = 0,60 \times 0,843 \times 0,911 \times 0,90 \times 0,95 \times 1,064 = 0,418$  (41,8 %)

Using equation  $\eta_e = P_u/P_e$ , then  $P_e = P_u/\eta_e$ . Therefore  $P_e = 1,125/0,418 = 2,69$  kW.

Using the graph in Figure 6 or Table 4, it is found that the optimum efficiency should be 31,4 % or greater for a power input of 2,69 kW. Therefore, the proposed fan meets the minimum criteria for efficiency line FMEG35.

$$\text{FMEG35} = 2,74 \times \ln(P_e) - 6,33 + N_G \quad (\text{B.3})$$

where

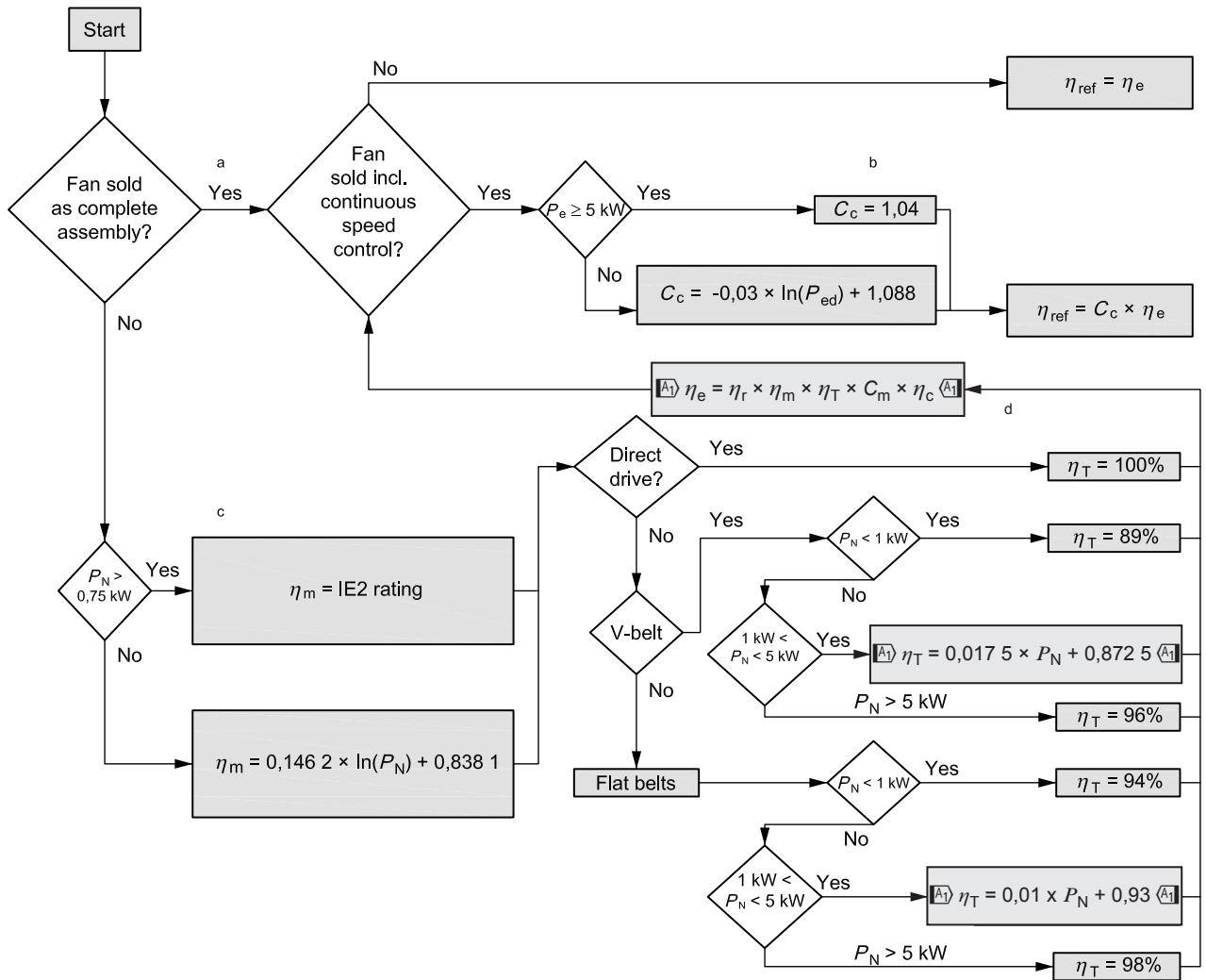
$$N_G = 35$$

$$P_e = 2,69 \text{ kW}$$

then

$$\text{FMEG35} = 2,74 \times \ln(2,69) - 6,33 + 35 = 31,4 \%$$





**Key**

- $C_c$  compensation factor to account for energy savings at part load, if using speed control
- $C_m$  compensation factor to account for suboptimal matching of components, 0,9
- $P_e$  input power to the fan product (kW)
- $P_N$  nominal motor power (kW), i.e. rated power (nameplate)
- $\eta_c$  efficiency of the VSD only (if not integrated within a motor)
- $\eta_e$  efficiency of the complete product, including fan wheel, motor and transmission
- $\eta_m$  efficiency of the motor only (including losses of VSD, if integrated within the motor)
- $\eta_r$  efficiency of the fan wheel only
- $\eta_{ref}$  reference efficiency of the fan product that should be applied in the context of Directive 2009/125/EC
- $\eta_T$  efficiency of the transmission only

- a If a fan is sold as a complete assembly, efficiency,  $\eta_e$ , shall be assessed by direct measurement of  $P_e$  or  $P_{ed}$  and  $P_u$ .
- b To account for energy savings at part load, a compensation factor shall be used.
- c Default values shall be used for calculation, if the fan is not supplied as a complete assembly.
- d To account for the mismatching of components, a compensation factor,  $C_m$ , of 0,9 shall be applied.

**Figure B.3 — Calculation procedure, control compensation factor and components**

## Annex C (informative)

### Variation of fan performance between installation categories

There can be a significant difference in results of performance measurements between the installation categories. It is, therefore, important for the person selecting the fan, the end user or legislator to understand which installation category is being considered. In addition to the installation category, it should be stated whether the FMEG considered is based on overall efficiency or overall static efficiency (see ISO 5801).

The installation categories are devised to give a good indication of how the fan can perform in a particular application. For example, an axial fan on a refrigeration condenser operates in a condition close to free inlet and free outlet conditions and, therefore, installation category A would be appropriate. Installation category D is for applications where there is a duct fitted on the inlet and outlet. This gives an incorrect indication of performance if the fan is applied to a refrigeration condenser.

Another example is a radial (plenum) fan used in an air handling unit (AHU). This operates in close to free inlet and outlet conditions, and measurements taken according to installation category A would be appropriate. If a duct is connected to the inlet inside the AHU, installation category C would be more appropriate.

An axial fan tested according to installation category D gives a higher efficiency value than one measured to installation category A. A plenum fan measured according to category C gives a higher efficiency value than according to category A.

Legislators should use this International Standard by clearly stating the installation category when setting the minimum efficiency levels, for example:

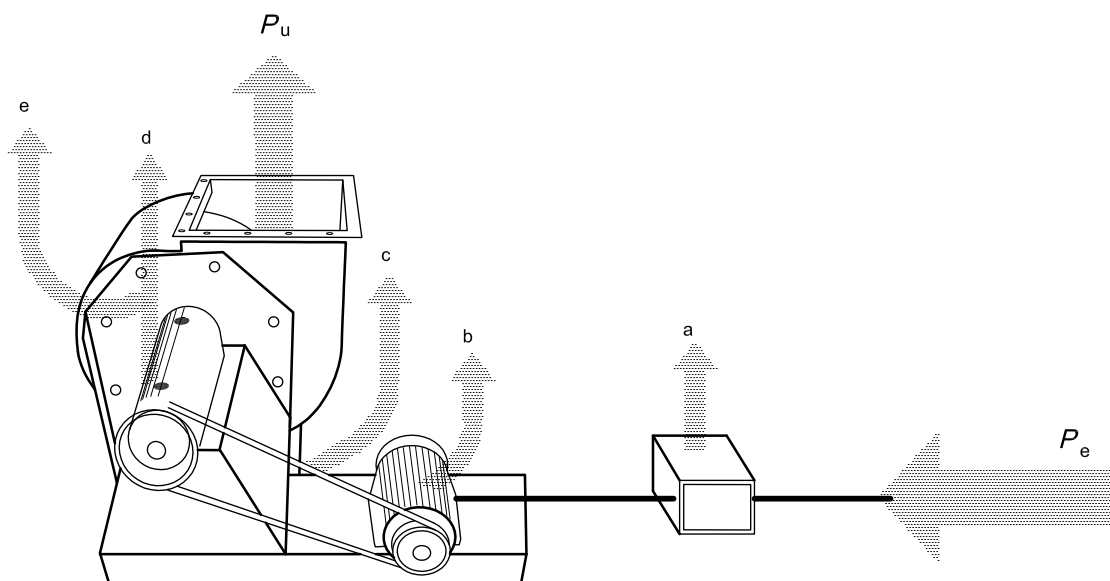
- a) axial fan according to installation category A — minimum efficiency level FMEG<sub>xx</sub>;
- b) axial fan according to installation category B — minimum efficiency level FMEG<sub>xx</sub>;
- c) axial fan according to installation category C — minimum efficiency level FMEG<sub>xx</sub>;
- d) axial fan according to installation category D — minimum efficiency level FMEG<sub>xx</sub>.

## Annex D (informative)

### Input power calculation for driven fans at design point

#### D.1 General

Economic or environmental concerns have resulted in renewed attention being given by many countries to the need for increasing the energy efficiency of all types of fan installations. There is, therefore, a need for an agreed approach to the calculation of the electrical input power,  $P_e$ . Figure D.1 shows a typical V-belt driven fan and the various losses that occur, as shown in Figure 2.



#### Key

$P_e$  electrical input power

$P_u$  volume flow and pressure (air power)

- a Variable speed device loss (heat).
- b Motor losses (heat).
- c Belt losses (heat).
- d Bearing losses (heat).
- e Impeller and casing aerodynamic losses (heat).

Figure D.1 — Typical belt driven fan showing power losses

#### D.2 Power consumption calculations

##### D.2.1 General

The electrical input power consumed by a fan installation is made up of a number of elements. These may be summarized as follows in D.2.2 to D.2.4.

**D.2.2** Impeller power is the mechanical power supplied to the fan impeller in a cased fan. This is denoted as  $P_r$ , and is expressed in watts or kilowatts.  $P_u$  is the fan air power and fan impeller efficiency is:

$$\eta_r = \frac{P_u}{P_r} \quad (\text{D.1})$$

expressed as a decimal.

This is directly applicable to fan arrangements 4, 5, 15 and 16 (see ISO 13349).

**D.2.3** Fan shaft power is the mechanical power supplied to the fan shaft. This is denoted as  $P_a$ , and is expressed in watts or kilowatts.  $P_u$  is the fan air power and fan shaft efficiency is:

$$\eta_a = \frac{P_u}{P_a} \quad (\text{D.2})$$

expressed as a decimal.

This is directly applicable to all other fan arrangements, i.e. 1 to 3, 6 to 14 and 17 to 19 (see ISO 13349).

It differs from the impeller power by the addition of power losses in the fan bearings as a result of friction.

**D.2.4** Bearing frictional power: these losses can be obtained from Equation (D.3):

$$P_b = 0,105 \times M \times N \quad (\text{D.3})$$

where

$P_b$  is the power loss in bearings, in watts;

$M$  is the total frictional moment of the bearings, in newton metres;

$N$  is the impeller/shaft rotational speed, in reciprocal minutes.

The frictional moment for a good quality, correctly lubricated, bearing can be estimated with sufficient accuracy in most cases taking a coefficient of friction,  $\mu$ , as constant, and using Equation (D.4):

$$M = 0,5\mu C_d \quad (\text{D.4})$$

where

$M$  is the total frictional moment of the bearing, in newton metres;

$\mu$  is the coefficient of friction as a constant for the bearings (see Table D.1);

$C_d$  is the equivalent dynamic bearing load, in newtons;

$d$  is the bearing(s) bore diameter(s), in metres.

Table D.1 — Approximate constant coefficients of friction for different bearing types — Unsealed

Type of bearing	Coefficient of friction $\mu$
Deep groove ball	0,001 5
Angular contact ball	
— Single row	0,002
— Double row	0,002 4
Four-point contact ball	0,002 4
Self-aligning ball	0,001 0
Cylindrical roller	
— with cage	0,001 1
— full complement	0,002 0
Needle roller	0,002 5
Taper roller	0,001 8
Spherical roller	0,001 8
Thrust ball	0,001 3
Cylindrical roller thrust	0,005 0
Needle roller thrust	0,005 0
Spherical roller thrust	0,001 8
NOTE For all other types of bearing, see the information supplied by the manufacturer.	

The total resistance to rotation of a bearing comprises the rolling and sliding friction in the rolling contacts, in the contact areas between rolling elements and the cage, the guiding surfaces of the rolling elements or the cage, the friction in the lubricant and the sliding friction of contact seals, if fitted.

If bearings are fitted with contact seals, the frictional losses in these may exceed those generated in the bearings. The frictional moment of seals for bearings that have seals on both sides may be estimated from the empirical Equation (D.5):

$$M_{\text{seal}} = k_1 d_s^a + k_2 \quad (\text{D.5})$$

where

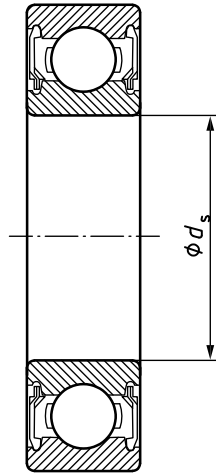
$M_{\text{seal}}$  is frictional moment of seals, in newton metres;

$k_1$  is a constant dependent on bearing type;

$k_2$  is a constant, in newton metres, dependent on bearing type and seal type;

$d_s$  is the shoulder diameter of bearing, in metres (see Figure D.2);

$a$  is a multiplicand dependent on bearing and seal type.



**Key**

$d_s$   $\boxed{A_1}$  bore diameter of bearing  $\boxed{A_1}$

**Figure D.2 — Section through a sealed rolling element bearing**

In Equation (D.5),  $a$  can vary between 0 and 2,3;  $k_1$  can vary between 0 and 0,06 and  $k_2$  can vary between 0 and 50. For confirmation of these values, see the information supplied by the bearing manufacturer, if necessary, noting that different symbols can be used.

As:

$$P_b = P_a - P_r \tag{D.6}$$

the efficiency may be defined as fan bearing efficiency, given in Equation (D.7):

$$\eta_b = \frac{P_r}{P_a} = 1 - \frac{P_b}{P_a} \tag{D.7}$$

and

$$\eta_r \times \eta_b = \eta_a \tag{D.8}$$

In all cases, it is probably better to test the same fan design in arrangements such as 1 and 4 (see ISO 13349), obtaining the bearing losses by subtraction.

NOTE The total moment of the fan bearings is the numerical sum of the individual moments ignoring the sign (the direction of the moments is immaterial).

**D.2.5 Transmission power**

Many fans, especially in the heating, ventilation, air conditioning and refrigeration (HVACR) sector, are driven through pulleys and V-belts. This gives flexibility to fan manufacturers, who can cover a wide duty range with a limited number of models. The system designer can take comfort in the thought that if his or her system resistance calculations prove to be wrong, a simple pulley change can rectify the situation, provided there is sufficient motor capacity.

Care should be taken to neither over, nor under provide in the design of the belt drive. In either case, its efficiency suffers. Whereas a well-designed drive can exceed 95 % in its efficiency, the provision of additional belts for a direct-on-line start can often reduce this considerably. A “soft” start can be part of a better solution.

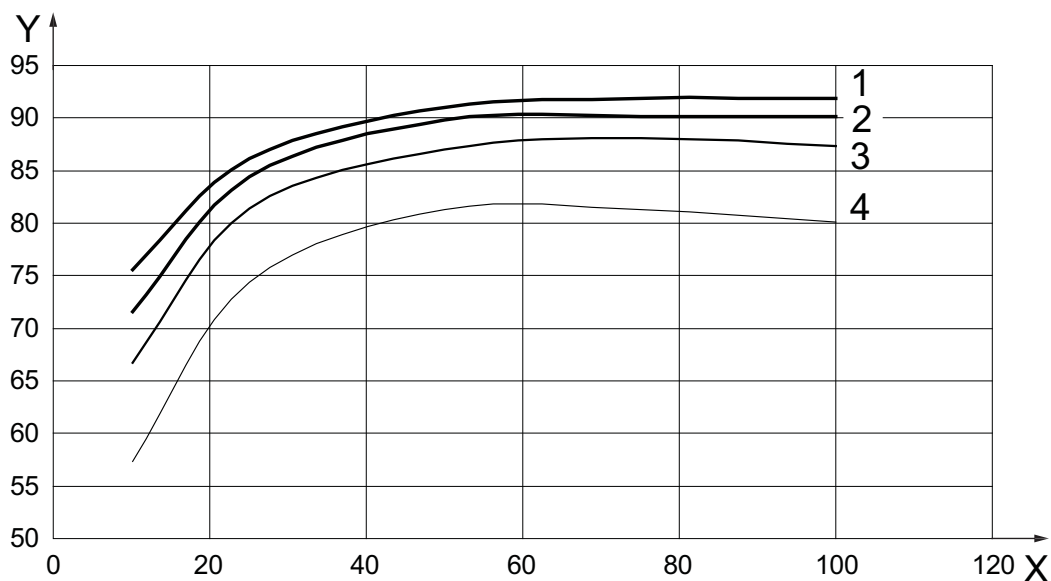
If fans are driven through flexible couplings (see arrangements 7, 8, 9 and 17 in ISO 13349), these are normally assumed to have an efficiency of 97 % unless figures are available from the coupling supplier.

### D.2.5 Motor power

Perhaps the most common type of motor used in fan installations (certainly above an output of 1 kW) is the squirrel cage a.c. induction design. It is robust, reliable, requires minimum maintenance and is relatively inexpensive. There has been a gradual improvement in its efficiency at both full and partial loads. This has been achieved by the inclusion of greater amounts of active material. Three efficiency levels are standardized in IEC 60034-30. The efficiency for actual motors at partial loads (around 75 % of nameplate rating) can sometimes be greater than that at full load. This is contrary to earlier designs. It is important to use the efficiency at the actual absorbed power, which may be calculated using any of the methods described in IEC 60034-2-1.

### D.2.6 Controls/power loss

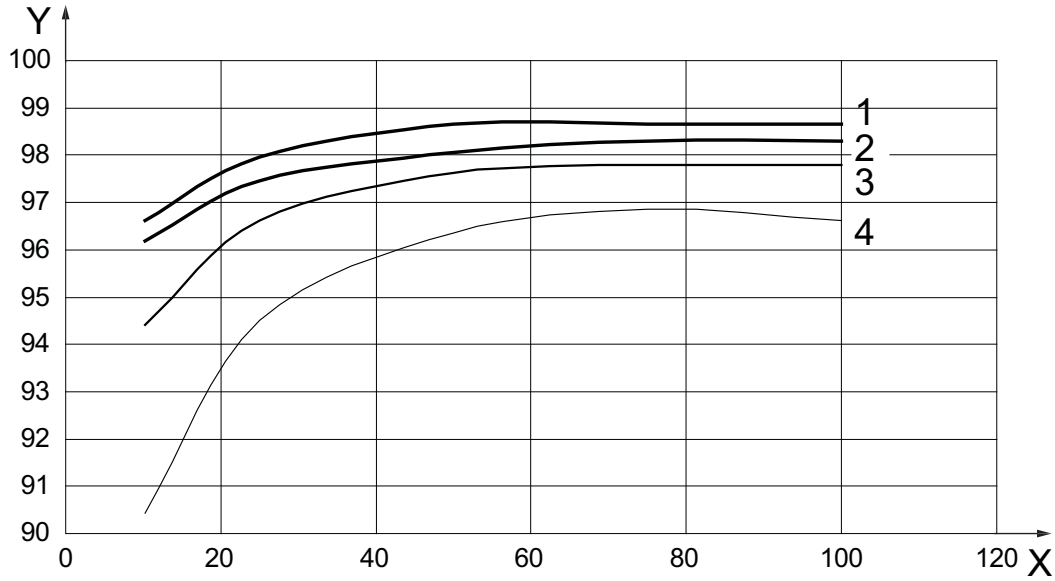
This is often ignored, especially with inverters. The efficiency of controls at high turn-down ratios can be much less than 100 %, although, of course, powers absorbed by the fan are also small. Figures D.3 to D.6 are typical examples of a 30 kW motor.



**Key**

- X nominal torque (%)
- Y efficiency (%)
- 1 100 % speed
- 2 75 % speed
- 3 50 % speed
- 4 25 % speed

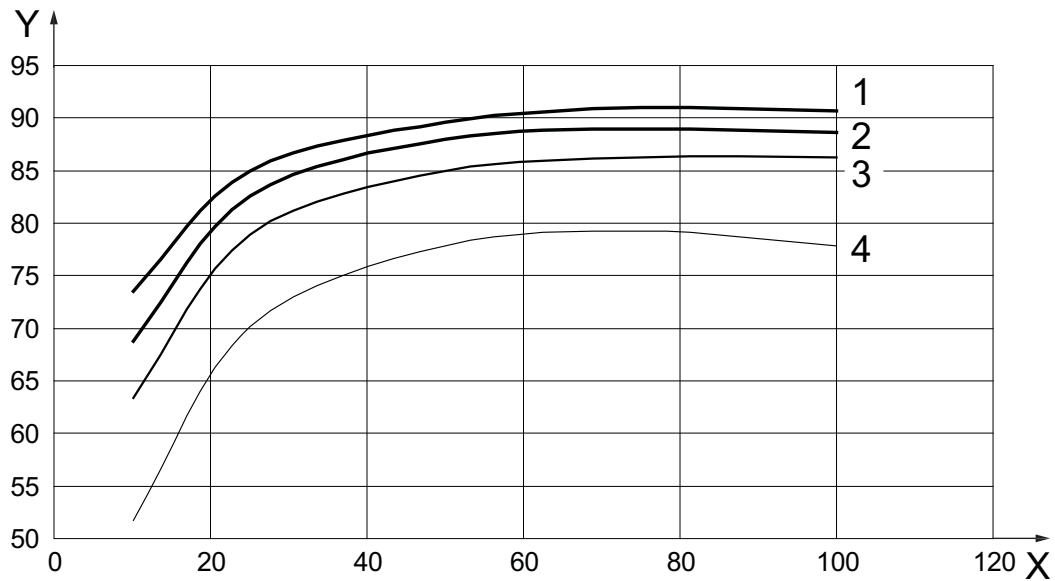
Figure D.3 — Efficiency of a typical motor at various loads



**Key**

X nominal torque (%)	1 100 % speed	3 50 % speed
Y efficiency (%)	2 75 % speed	4 25 % speed

**Figure D.4 — Efficiency of a typical variable frequency drive**



**Key**

X nominal torque (%)	1 100 % speed	3 50 % speed
Y efficiency (%)	2 75 % speed	4 25 % speed

**Figure D.5 — Efficiency of a typical motor and variable frequency drive**



### D.3 Mains power required

The electrical power input abstracted from the mains may be calculated using Equation (D.9):

$$P_e = \frac{q_{vsg1} \times P_f}{\eta_r \times \eta_b \times \eta_T \times \eta_m \times \eta_c} \quad (D.9)$$

where

$P_e$  is the electrical input power, in kilowatts, alternatively in watts;

$q_{vsg1}$  is the flow rate, in cubic metres per second or litres per second ( $m^3/s$  or  $l/s$ );

$P_f$  is the fan pressure, in kilopascals or Pascals;

$\eta_r$  is the fan impeller efficiency, expressed as a decimal;

$\eta_b$  is the fan bearing efficiency, expressed as a decimal;

$\eta_T$  is the transmission efficiency, expressed as a decimal;

$\eta_m$  is the motor efficiency, expressed as a decimal;

$\eta_c$  is the control efficiency, expressed as a decimal.

NOTE 1 If fan pressure is expressed in Pascals,  $P_e$  is in watts, if fan pressure is expressed in kilopascals,  $P_e$  is in kilowatts.

NOTE 2  $\eta_r \times \eta_b = \eta_a$ , where  $\eta_a$  is the fan shaft efficiency.

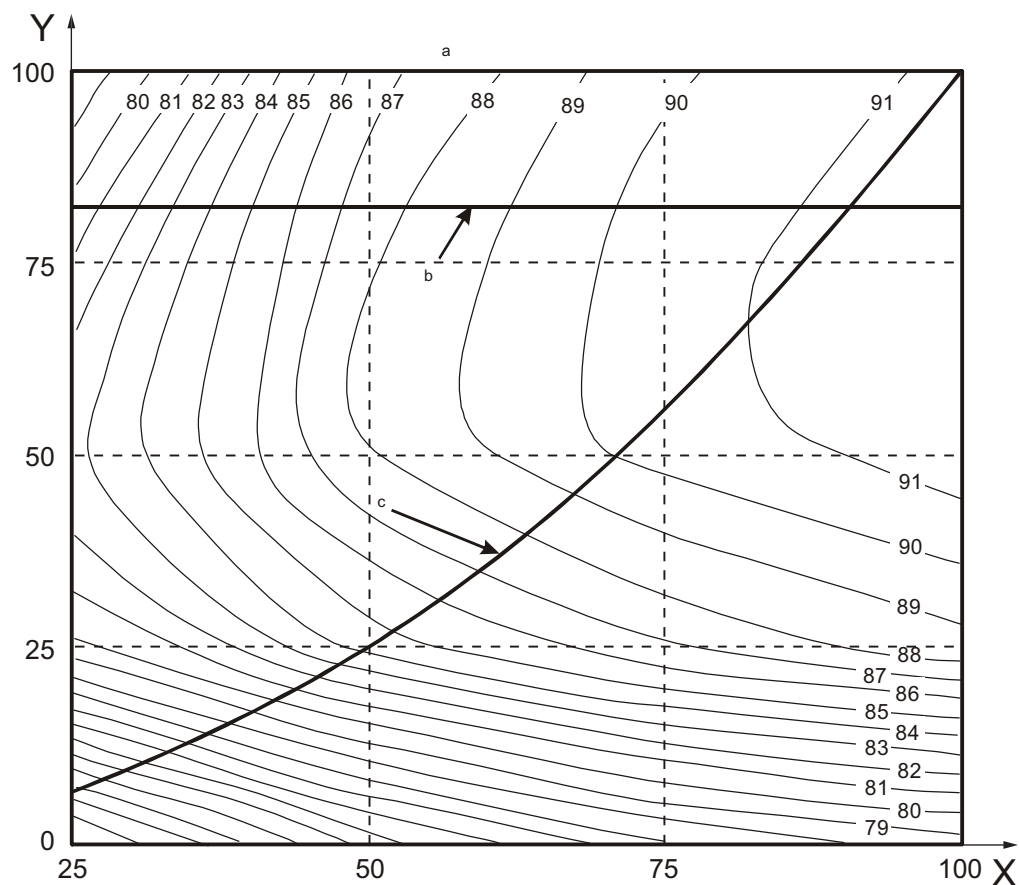
NOTE 3 Fan pressure can also be defined on a static basis provided  $\eta_r$  is also calculated on the same basis. Fan static efficiency is not theoretically correct as it can never be 100 % or 1.

NOTE 4 These calculations are usually conducted at the enquiry stage before an audit can be carried out.

All duties and values should be for the appropriate installation category.

### D.4 Presenting results of a typical induction motor and VFD while driving a fan

The combined efficiency of an induction motor and VFD while driving a fan depends on how the fan pressure varies with flow rate. For many systems  $p_f \propto q_{vsg}^2$  (see Figure D.6). By plotting the torque,  $t_m$ , required from the motor against speed, it is possible to deduce that torque  $t_m \propto \text{speed } n^2$  or  $N^2$ . There are, however, other possibilities, e.g. torque required can be virtually constant, whilst viscosity effects can reduce the speed index to less than 2. It is also possible that there are fixed resistance elements. Provided the variation of motor torque with speed can be deduced, it is possible to calculate how the efficiency varies.



**Key**

X speed (% nominal)  
 Y torque (% nominal)

- a System efficiency.
- b Fixed resistance.
- c  $t_m \propto n^2$ .

**Figure D.6 — Typical efficiency of motor and VFD if applied to a fan  
 (Adapted from Reference [10].)**

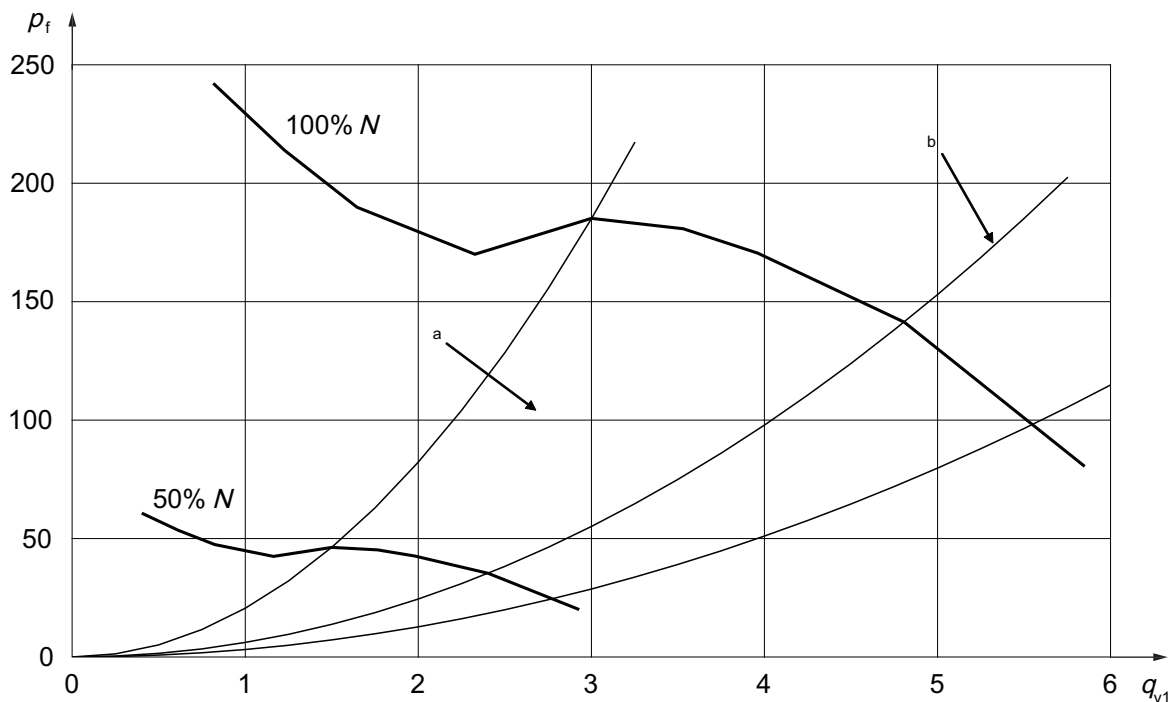
## Annex E (informative)

### Selection of fans for best efficiency

This International Standard addresses the optimum efficiency only. It is, however, possible to select fans for a given duty well away from this point. Such selections can give a smaller fan size with reduced first cost at the expense of increased running costs. It is recommended that the fan supplier and user select over the range of air flows where the efficiency is not less than 85 % of the optimum efficiency. The typical curve shown in Figure E.1 illustrates the range of acceptable air flow rates for a fan.

The fan efficiency is, generally, a function of fan speed and size. Thus, when the fan running speed is lower than the maximum allowed, the actual operational efficiency can be lower than the nominal efficiency used for classification, which is referenced to maximum speed.

NOTE The performance details shown in Figures E.1, E.2 and E.3 are for illustrative purposes only.

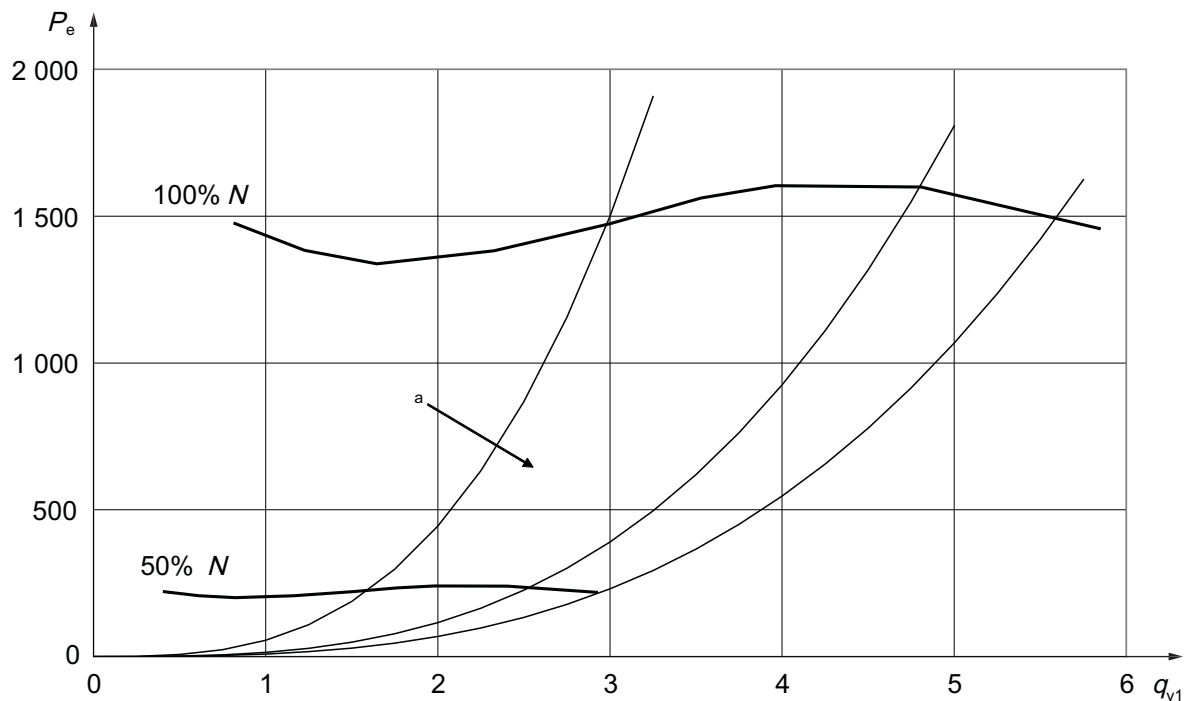


#### Key

- $q_{v1}$  inlet volume flow rate ( $m^3/s$ )
- $p_f$  fan pressure (Pa)
- $N$  rotational speed of impeller

- a Working range.
- b Optimum fan efficiency curve.

Figure E.1 — Fan air performance characteristic



**Key**

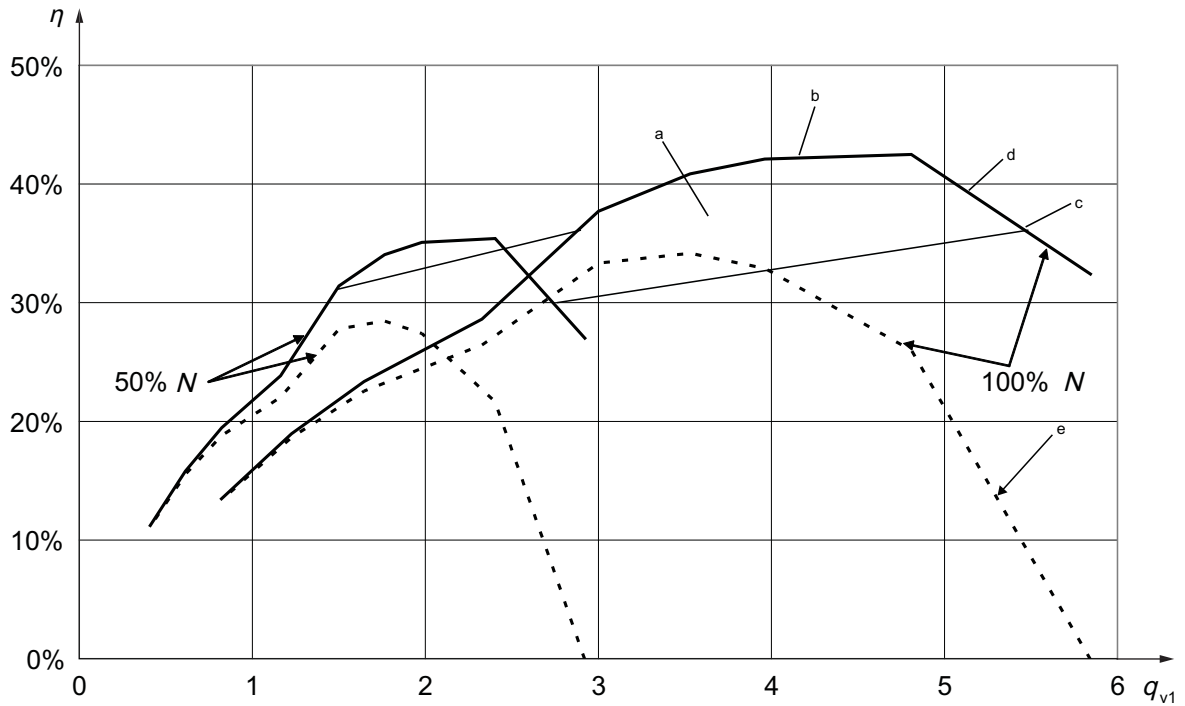
$q_{v1}$  inlet volume flow rate (m<sup>3</sup>/s)

$P_e$  motor input power (W)

$N$  rotational speed of impeller

a Working range.

**Figure E.2 — Fan input power characteristic**



**Key**

- $q_{v1}$  inlet volume flow rate ( $m^3/s$ )
- $\eta$  overall efficiency
- $N$  rotational speed of impeller

- a Working range.
- b Optimum (peak) fan efficiency.
- c 85 % of optimum fan efficiency.
- d Overall efficiency.
- e Overall static efficiency.

**Figure E.3 — Fan efficiency characteristic**

## Annex F (informative)

### Determination of efficiency grade for a driven fan

#### F.1 Calculation

##### F.1.1 Methodology for calculation of efficiency grade, $N_G$

The energy efficiency grade is the energy efficiency formula for a given fan category. The grade is based on the electrical input power,  $P_{ed}$ , across a range of power input from 0,125 kW to 500 kW. The line comprises two slopes, one from 0,125 kW to 10 kW and the other above 10 kW to 500 kW.

The following are three series of grades to reflect the different characteristics of various fan types.

- a) The energy efficiency grade for axial, forward curved or radial-bladed centrifugal driven fans are based on the equations in Table F.1:

**Table F.1 — FMEG formula for axial, forward curved or radial-bladed centrifugal driven fans**

Power range $P_e$ 0,125 kW to 10 kW	Power range $P_e >10$ kW to 500 kW
$\eta_{\text{target}} = 2,74 \times \ln(P_{ed}) - 6,33 + N_G$	$\eta_{\text{target}} = 0,78 \times \ln(P_{ed}) - 1,88 + N_G$
Where $P_{ed}$ is the electrical power input and $N_G$ is the integer of the energy efficiency grade required.	

- b) The energy efficiency grade for centrifugal backward-bladed fans (with and without housing) and mixed-flow driven fans are based on the equations in Table F.2:

**Table F.2 — FMEG formula for centrifugal backward-bladed fans (with and without housing) and mixed-flow driven fans**

Power range $P_e$ 0,125 kW to 10 kW	Power range $P_e >10$ kW to 500 kW
$\eta_{\text{target}} = 4,56 \times \ln(P_{ed}) - 10,5 + N_G$	$\eta_{\text{target}} = 1,1 \times \ln(P_{ed}) - 2,6 + N_G$
Where $P_{ed}$ is the electrical power input and $N_G$ is the integer of the energy efficiency grade chosen.	

- c) The grade for cross-flow fans are based on the equations in Table F.3:

**Table F.3 — FMEG formula for cross-flow driven fans**

Power range $P_e$ 0,125 kW to 10 kW	Power range $P_e >10$ kW to 500 kW
$\eta_{\text{target}} = 1,14 \times \ln(P_{ed}) - 2,6 + N_G$	$\eta_{\text{target}} = N_G$

### F.1.2 Application of the efficiency grade

The efficiency grade defines a minimum efficiency target,  $\eta_{\text{target}}$ , which a fan shall achieve based on its electrical input power at its point of optimum efficiency.  $\eta_{\text{target}}$  is the output value from the appropriate equation in F.1.1, using the applicable integer,  $N_G$ , of the relevant efficiency grade and the electrical power input,  $P_{\text{ed}}$ , of the fan at its point of optimum efficiency.

The fan efficiency,  $\eta_e$ , calculated according to the appropriate method in F.1.1 shall be equal to or greater than the target value,  $\eta_{\text{target}}$ , set by the efficiency grade to meet the minimum efficiency requirements.

If a fan achieves a fan efficiency,  $\eta_e$ , equal to or greater than the target value,  $\eta_{\text{target}}$ , set by the appropriate efficiency grade,  $N_G$ , it can claim to meet the requirements of the efficiency grade,  $N_G$ .

## F.2 Example of calculation of efficiency grades

### F.2.1 Axial fan

A contract requires an axial fan to exceed a driven fan efficiency line, for an axial fan, of FMEG45. The proposed fan has an air power,  $P_U$ , of 0,08 kW, an electrical power input,  $P_e$ , of 0,27 kW at its point of optimum efficiency and has been measured using installation category D.

Using Equation (3),  $\eta_e = (P_U/P_e) = 0,08/0,27 = 0,296$

This gives an overall efficiency of 29,6 %.

Applying  $N_G = 45$  from FMEG45 to the equation in Table F.1, it is found that the optimum efficiency should be 35,1 % or greater, for a power input of 0,27 kW. Therefore, the proposed fan does not meet the minimum criteria for efficiency line FMEG45.

$$\eta_{\text{target}} = 2,74 \times \ln(P_e) - 6,33 + N_G \quad (\text{F.1})$$

$$N_G = 45, P_e = 0,27 \text{ kW}$$

Therefore, the minimum efficiency is:  $2,74 \times \ln(0,27) - 6,33 + 45 = 0,351$  or 35,1 %.

### F.2.2 Centrifugal bladed fan without housing — Plenum fan

Legislation could require a fan to exceed a driven fan efficiency line, for a centrifugal plug fan, of FMEG55. The proposed centrifugal plug fan has an integral variable speed drive and has an air power,  $P_{\text{US}}$ , of 1,133 kW, an electrical power input,  $P_{\text{ed}}$ , of 1,925 kW at its point of optimum efficiency and has been measured using installation category A.

$$\text{Using Equation (6), } \eta_{\text{ed}} = (P_{\text{US}}/P_{\text{ed}}) \times C_c = (1,133/1,925) \times 1,068 = 0,629$$

This gives an overall fan efficiency of 62,9 %.

If using the equation in Table F.2, it is found that the optimum efficiency should be 47,5 % or greater, for a power input of 1,925 kW. Therefore, the proposed fan does meet the minimum criteria for efficiency line FMEG55.

$$\eta_{\text{target}} = 4,56 \times \ln(P_e) - 10,5 + N_G \quad (\text{F.2})$$

$$N_G = 55, P_e = 1,925 \text{ kW.}$$

Therefore, the minimum efficiency is:  $4,56 \times \ln(1,925) - 10,5 + 55 = 0,475$  or 47,5 %.

## Annex G (informative)

### Explanatory note

#### G.1 Specific fan power

Specific fan power (SFP) is not a measurement of a fan, but is used for the combined fan and system. SFP is a term that defines the energy consumption of a system and is the sum of the energy consumed by all fans, drives and controls in an air movement system, divided by the volume flow of that system, either the total supply volume or the total extract volume, whichever is the greater.

It is a useful term to use for a system, as it encourages the reduction of the resistance losses within the system. As the resistance losses are reduced, the necessary fan power to overcome those losses are reduced and, therefore, the energy consumed to provide that fan power is reduced. Some caution should be applied as there are other effective means of reducing energy consumption by recovering energy. There are, for instance, heat exchangers, which improve the energy use of a heating/cooling system, but increase the system losses and hence the SFP value, but can deliver a greater energy saving than is consumed by the increased fan consumption. The overall carbon emissions of a system should be considered.

Although the term SFP includes the word “fan”, it is an ambiguous term to apply to an individual fan within a system. The value of SFP changes depending on the system resistance against which the fan operates and therefore, there is not an optimum SFP for an individual fan.

When developing a ventilation system, it can be a helpful parameter to compare different fans for a particular operating point.

SFP is calculated using Equation (G.1):

$$P_{sf} = \frac{P_{ed}}{q_v} \quad (G.1)$$

where

- $P_{sf}$  is specific fan power, expressed in kilowatts per (cubic metre per second) [kW/(m<sup>3</sup>/s)] or watts per (litre per second) [W/(l/s)], which have the same numerical value;
- $P_{ed}$  is electrical input power of all fans, drives and control equipment within the system, expressed in watts or kilowatts (W or kW);
- $q_v$  is the air volume flow rate of the system, expressed in litres per second or cubic metres per second (l/s or m<sup>3</sup>/s).

For additional explanation of SFP, see ISO 5801:2007, Annex E, and EN 13779.

#### G.2 Box fans and roof fans

The box fan and roof fan types are not within the scope of this International Standard, as these designs are based on enclosing a fan within a restricted space or covering it with a protective cowl. The efficiency of the enclosed fan is, therefore, much lower than the fan on its own. A measurement that may be used to determine the quality of design is SFP. However, if found necessary, this International Standard may be applied using the appropriate grade and graphs (see Figures 6 and 7 and Annex F).

The methods given in Annex B should not be used to determine the efficiency of these fan types.



### **G.3 Air curtains**

Air curtains are not within the scope of this International Standard. The key performance measure for air curtains is energy effectiveness, i.e. how much energy is saved by having an air curtain across a doorway compared to a doorway without an air curtain. An air curtain is an application of a fan whose air performance characteristics are presented in ISO 27327-1.

The preferred measure for grading the quality of fan design should be the specific fan power.

## Bibliography

- [1] ISO 22, *Belt drives — Flat transmission belts and corresponding pulleys — Dimensions and tolerances*
- [2] ISO 5292, *Belt drives — V-belts and V-ribbed belts — Calculation of power ratings*
- [3] ISO 5295, *Synchronous belts — Calculation of power rating and drive centre distances*
- [4] ISO 5802, *Industrial fans — Performance testing in situ*
- [5] ISO 13351, *Fans — Dimensions*
- [6] ISO 27327-1, *Fans — Air curtain units — Part 1: Laboratory methods of testing for aerodynamic performance rating*
- [7] IEC/TS 60034-25, *Rotating electrical machines — Part 25: Guidance for the design and performance of a.c. motors specifically designed for converter supply*
- [8] IEC/TS 60034-31, *Rotating electrical machines — Part 31: Selection of energy-efficient motors including variable speed applications — Application guide*
- [9] EN 13779, *Ventilation for non-residential buildings — Performance requirements for ventilation and room-conditioning systems*
- [10] ANGERS, P. *Defining the efficiency of variable speed drives*. Energy Technology Laboratory, Hydro-Quebec, Motor Energy Performance Standards Australia Conference, February 4-5, 2009
- [11] Directive 2009/125/EC of the European Parliament and of the Council of 21 October 2009 establishing a framework for the setting of ecodesign requirements for energy-related products



---

---

**ICS 23.120**

Price based on 42 pages



# British Standards Institution (BSI)

BSI is the national body responsible for preparing British Standards and other standards-related publications, information and services.

BSI is incorporated by Royal Charter. British Standards and other standardization products are published by BSI Standards Limited.

## About us

We bring together business, industry, government, consumers, innovators and others to shape their combined experience and expertise into standards-based solutions.

The knowledge embodied in our standards has been carefully assembled in a dependable format and refined through our open consultation process. Organizations of all sizes and across all sectors choose standards to help them achieve their goals.

## Information on standards

We can provide you with the knowledge that your organization needs to succeed. Find out more about British Standards by visiting our website at [bsigroup.com/standards](http://bsigroup.com/standards) or contacting our Customer Services team or Knowledge Centre.

## Buying standards

You can buy and download PDF versions of BSI publications, including British and adopted European and international standards, through our website at [bsigroup.com/shop](http://bsigroup.com/shop), where hard copies can also be purchased.

If you need international and foreign standards from other Standards Development Organizations, hard copies can be ordered from our Customer Services team.

## Subscriptions

Our range of subscription services are designed to make using standards easier for you. For further information on our subscription products go to [bsigroup.com/subscriptions](http://bsigroup.com/subscriptions).

With **British Standards Online (BSOL)** you'll have instant access to over 55,000 British and adopted European and international standards from your desktop. It's available 24/7 and is refreshed daily so you'll always be up to date.

You can keep in touch with standards developments and receive substantial discounts on the purchase price of standards, both in single copy and subscription format, by becoming a **BSI Subscribing Member**.

**PLUS** is an updating service exclusive to BSI Subscribing Members. You will automatically receive the latest hard copy of your standards when they're revised or replaced.

To find out more about becoming a BSI Subscribing Member and the benefits of membership, please visit [bsigroup.com/shop](http://bsigroup.com/shop).

With a **Multi-User Network Licence (MUNL)** you are able to host standards publications on your intranet. Licences can cover as few or as many users as you wish. With updates supplied as soon as they're available, you can be sure your documentation is current. For further information, email [bsmusales@bsigroup.com](mailto:bsmusales@bsigroup.com).

## BSI Group Headquarters

389 Chiswick High Road London W4 4AL UK

## Revisions

Our British Standards and other publications are updated by amendment or revision.

We continually improve the quality of our products and services to benefit your business. If you find an inaccuracy or ambiguity within a British Standard or other BSI publication please inform the Knowledge Centre.

## Copyright

All the data, software and documentation set out in all British Standards and other BSI publications are the property of and copyrighted by BSI, or some person or entity that owns copyright in the information used (such as the international standardization bodies) and has formally licensed such information to BSI for commercial publication and use. Except as permitted under the Copyright, Designs and Patents Act 1988 no extract may be reproduced, stored in a retrieval system or transmitted in any form or by any means – electronic, photocopying, recording or otherwise – without prior written permission from BSI. Details and advice can be obtained from the Copyright & Licensing Department.

## Useful Contacts:

### Customer Services

**Tel:** +44 845 086 9001

**Email (orders):** [orders@bsigroup.com](mailto:orders@bsigroup.com)

**Email (enquiries):** [cservices@bsigroup.com](mailto:cservices@bsigroup.com)

### Subscriptions

**Tel:** +44 845 086 9001

**Email:** [subscriptions@bsigroup.com](mailto:subscriptions@bsigroup.com)

### Knowledge Centre

**Tel:** +44 20 8996 7004

**Email:** [knowledgecentre@bsigroup.com](mailto:knowledgecentre@bsigroup.com)

### Copyright & Licensing

**Tel:** +44 20 8996 7070

**Email:** [copyright@bsigroup.com](mailto:copyright@bsigroup.com)



...making excellence a habit.™