

BS EN ISO 10675-2:2013



BSI Standards Publication

Non-destructive testing of welds — Acceptance levels for radiographic testing

Part 2: Aluminium and its alloys

bsi.

...making excellence a habit.™

National foreword

This British Standard is the UK implementation of EN ISO 10675-2:2013. It is identical to ISO 10675-2:2010. It supersedes BS EN 12517-2:2008 which is withdrawn.

The UK participation in its preparation was entrusted to Technical Committee WEE/46, Non-destructive testing.

A list of organizations represented on this committee can be obtained on request to its secretary.

This publication does not purport to include all the necessary provisions of a contract. Users are responsible for its correct application.

© The British Standards Institution 2013. Published by BSI Standards Limited 2013

ISBN 978 0 580 81137 1

ICS 25.160.40

Compliance with a British Standard cannot confer immunity from legal obligations.

This British Standard was published under the authority of the Standards Policy and Strategy Committee on 30 November 2013.

Amendments issued since publication

Date	Text affected
------	---------------

English Version

Non-destructive testing of welds - Acceptance levels for radiographic testing - Part 2: Aluminium and its alloys (ISO 10675-2:2010)

Essais non destructifs des assemblages soudés - Niveaux d'acceptation pour évaluation par radiographie - Partie 2: Aluminium et ses alliages (ISO 10675-2:2010)

Zerstörungsfreie Prüfung von Schweißverbindungen - Zulässigkeitsgrenzen für die Durchstrahlungsprüfung - Teil 2: Aluminium und seine Legierungen (ISO 10675-2:2010)

This European Standard was approved by CEN on 8 August 2013.

CEN members are bound to comply with the CEN/CENELEC Internal Regulations which stipulate the conditions for giving this European Standard the status of a national standard without any alteration. Up-to-date lists and bibliographical references concerning such national standards may be obtained on application to the CEN-CENELEC Management Centre or to any CEN member.

This European Standard exists in three official versions (English, French, German). A version in any other language made by translation under the responsibility of a CEN member into its own language and notified to the CEN-CENELEC Management Centre has the same status as the official versions.

CEN members are the national standards bodies of Austria, Belgium, Bulgaria, Croatia, Cyprus, Czech Republic, Denmark, Estonia, Finland, Former Yugoslav Republic of Macedonia, France, Germany, Greece, Hungary, Iceland, Ireland, Italy, Latvia, Lithuania, Luxembourg, Malta, Netherlands, Norway, Poland, Portugal, Romania, Slovakia, Slovenia, Spain, Sweden, Switzerland, Turkey and United Kingdom.



EUROPEAN COMMITTEE FOR STANDARDIZATION
COMITÉ EUROPÉEN DE NORMALISATION
EUROPÄISCHES KOMITEE FÜR NORMUNG

Management Centre: Avenue Marnix 17, B-1000 Brussels

Foreword

The text of ISO 10675-2:2010 has been prepared by Technical Committee ISO/TC 44 "Welding and allied processes" of the International Organization for Standardization (ISO) and has been taken over as EN ISO 10675-2:2013 by Technical Committee CEN/TC 121 "Welding" the secretariat of which is held by DIN.

This European Standard shall be given the status of a national standard, either by publication of an identical text or by endorsement, at the latest by February 2014, and conflicting national standards shall be withdrawn at the latest by February 2014.

Attention is drawn to the possibility that some of the elements of this document may be the subject of patent rights. CEN [and/or CENELEC] shall not be held responsible for identifying any or all such patent rights.

This document supersedes EN 12517-2:2008.

According to the CEN-CENELEC Internal Regulations, the national standards organizations of the following countries are bound to implement this European Standard: Austria, Belgium, Bulgaria, Croatia, Cyprus, Czech Republic, Denmark, Estonia, Finland, Former Yugoslav Republic of Macedonia, France, Germany, Greece, Hungary, Iceland, Ireland, Italy, Latvia, Lithuania, Luxembourg, Malta, Netherlands, Norway, Poland, Portugal, Romania, Slovakia, Slovenia, Spain, Sweden, Switzerland, Turkey and the United Kingdom.

Endorsement notice

The text of ISO 10675-2:2010 has been approved by CEN as EN ISO 10675-2:2013 without any modification.

Contents

Page

Foreword.....	iv
1 Scope	1
2 Normative references	1
3 Radiographic technique	1
4 General	2
5 Acceptance levels	2
Annex A (informative) Guide to the limitations of radiographic testing)	5
A.1 Volumetric imperfections in butt welds	5
A.2 Cracks in butt welds	5
A.3 Planar imperfections in butt welds	5
Annex B (informative) Examples for determination of percentage (%) of imperfections	6
Annex C (informative) Sum of acceptable areas	8
Bibliography	10

Foreword

ISO (the International Organization for Standardization) is a worldwide federation of national standards bodies (ISO member bodies). The work of preparing International Standards is normally carried out through ISO technical committees. Each member body interested in a subject for which a technical committee has been established has the right to be represented on that committee. International organizations, governmental and non-governmental, in liaison with ISO, also take part in the work. ISO collaborates closely with the International Electrotechnical Commission (IEC) on all matters of electrotechnical standardization.

International Standards are drafted in accordance with the rules given in the ISO/IEC Directives, Part 2.

The main task of technical committees is to prepare International Standards. Draft International Standards adopted by the technical committees are circulated to the member bodies for voting. Publication as an International Standard requires approval by at least 75 % of the member bodies casting a vote.

Attention is drawn to the possibility that some of the elements of this document may be the subject of patent rights. ISO shall not be held responsible for identifying any or all such patent rights.

ISO 10675-2 was prepared by the European Committee for Standardization (as EN 12517-2:2008) and was adopted, under a special "fast-track procedure", by Technical Committee ISO/TC 44, *Welding and allied processes*, Subcommittee SC 5, *Testing and inspection of welds*, in parallel with its approval by the ISO member bodies.

Request for official interpretations of any aspect of this part of ISO 10675 should be directed to the Secretariat of ISO/TC 44/SC 5 via your national standards body. A complete listing of these bodies can be found at www.iso.org.

Non-destructive testing of welds — Acceptance levels for radiographic testing —

Part 2: Aluminium and its alloys

1 Scope

This part of ISO 10675 specifies acceptance levels for indications from imperfections in aluminium butt welds detected by radiographic testing. If agreed, the acceptance levels may be applied to other types of welds or materials.

The acceptance levels may be related to welding standards, application standards, specifications or codes.

This part of ISO 10675 assumes that the radiographic testing has been carried out in accordance with ISO 17636.

When assessing whether a weld meets the requirements specified for a weld quality level, the sizes of imperfections permitted by standards are compared with the dimensions of indications revealed by a radiograph made of the weld.

2 Normative references

The following referenced documents are indispensable for the application of this document. For dated references, only the edition cited applies. For undated references, the latest edition of the referenced document (including any amendments) applies.

ISO 6520-1, *Welding and allied processes — Classification of geometric imperfections in metallic materials — Part 1: Fusion welding*

ISO 10042, *Welding — Arc-welded joints in aluminium and its alloys — Quality levels for imperfections*

ISO 17636, *Non-destructive examination of welds — Radiographic examination of welded joints*

3 Radiographic technique

Depending on the weld quality level, radiographic technique A or B in accordance with ISO 17636 shall be used as shown in Table 1.

Table 1 — Radiographic testing

Quality levels in accordance with ISO 10042	Testing techniques and classes in accordance with ISO 17636	Acceptance levels in accordance with this part of ISO 10675
B	B	1
C	B ^a	2
D	A	3
^a However, the minimum number of exposure for circumferential weld testing may correspond to the requirements of class A of ISO 17636.		

4 General

Welded joints should be visually tested in accordance with ISO 17637 and evaluated before radiographic testing.

The acceptance levels in this part of ISO 10675 are basically valid for evaluation of imperfections which cannot be detected and evaluated by visual testing (Table 2). Surface imperfections (Table 3; such as undercut and excessive penetration, surface damage, weld spatter, etc.) which due to object geometry cannot be evaluated, but where the interpreter suspects the ISO 10042 quality levels are not fulfilled, shall be subject to more specific testing.

When quantification of undercut and/or excessive penetration by radiographic testing is required, specific procedures using test exposures may be applied in order to establish a basis for approximate quantification in accordance with the requirements of ISO 10042. This shall be specified.

5 Acceptance levels

The acceptance levels for indications are shown in Tables 2 and 3. The types of imperfections are selected from ISO 10042 and defined in ISO 6520-1.

The symbols used in Tables 2 and 3 are the following:

A sum of projected areas of indications related to $L \times w_p$ in %;

b width of excess penetration of weld, in millimetres;

d diameter of pore, in millimetres;

d_A diameter of area surrounding a cluster, in millimetres;

h width of indication, the width or height of surface or cross surface imperfection, in millimetres;

l length of indication, in millimetres;

L any 100 mm testing length, in millimetres;

s nominal butt weld thickness, in millimetres;

t material thickness, in millimetres;

w_p width of the weld in millimetres;

Σl summary length of imperfections within *L*.

Any two adjacent imperfections separated by a distance smaller than the major dimension of the smaller imperfection shall be considered as a single imperfection.

Indications shall not be divided into different ranges *L*.

Table 2 — Acceptance levels for indications in butt welds

No	Type of internal imperfections in accordance with ISO 6520-1	Acceptance level 3 ^a	Acceptance level 2 ^a	Acceptance level 1
1	Cracks (100)	Not permitted	Not permitted	Not permitted
2a	Gas pores (2011)	$d \leq 0,4s$, max. 6 mm	$d \leq 0,3s$, max. 5 mm	$d \leq 0,2s$, max. 4 mm
2b	Porosity (2012) material thickness 0,5 mm to 3 mm	$A \leq 6\%$ $L = 100$ mm	$A \leq 2\%$ $L = 100$ mm	$A \leq 1\%$ $L = 100$ mm
2c	Porosity (2012) material thickness > 3 mm to 12 mm	$A \leq 10\%$ $L = 100$ mm	$A \leq 4\%$ $L = 100$ mm	$A \leq 2\%$ $L = 100$ mm
2d	Porosity (2012) material thickness > 12 mm to 30 mm	$A \leq 15\%$ $L = 100$ mm	$A \leq 6\%$ $L = 100$ mm	$A \leq 3\%$ $L = 100$ mm
2e	Porosity (2012) material thickness > 30 mm	$A \leq 20\%$ $L = 100$ mm	$A \leq 8\%$ $L = 100$ mm	$A \leq 4\%$ $L = 100$ mm
3 ^b	Clustered (localized) porosity (2013)	$d_A \leq 25$ mm or $d_{A,max} \leq w_p$	$d_A \leq 20$ mm or $d_{A,max} \leq w_p$	$d_A \leq 15$ mm or $d_{A,max} \leq w_p/2$
4 ^c	Linear porosity (2014)	$l \leq 25$ mm $L = 100$ mm	Not permitted	Not permitted
5 ^d	Elongated cavities (2015) and wormholes (2016)	$l \leq 0,4s$, max. 6 mm	$l < 0,3s$, max. 4 mm	$l < 0,2s$, max. 3 mm
6	Oxide inclusion (303)	$l < s$, max. 10 mm	$l < 0,5s$, max. 5 mm	$l < 0,2s$, max. 3 mm
7	Tungsten inclusions (3041)	$l < 0,4s$, max. 6 mm	$l < 0,3s$, max. 4 mm	$l < 0,2s$, max. 3 mm
8 ^e	Lack of fusion (401)	Permitted, but only intermittently and not breaking the surface $l \leq 25$ mm, $L = 100$ mm	Not permitted	Not permitted
9 ^e	Lack of penetration (402)	$l < 25$ mm, $L = 100$ mm	Permitted provided welded from both sides and not breaking the surface $l \leq 25$ mm, $L = 100$ mm	Not permitted

^a Acceptance levels 3 and 2 may be specified with suffix X which denotes that all indications over 25 mm are unacceptable.

^b See Annex C, Figure C.1 and Figure C.2 (normative).

^c See Annex C, Figure C.3 and Figure C.4 (normative).

^d See Annex C, Figure C.5 and Figure C.6 (normative).

^e If the length of the weld is below 100 mm, the maximum length of indications shall not exceed 25 % of that weld.

Table 3 — Surface imperfections: The acceptance levels are those defined for visual testing. These imperfections are normally evaluated by visual testing

No	Type of surface imperfections in accordance with ISO 6520-1	Acceptance level 3 ^a	Acceptance level 2 ^a	Acceptance level 1
10	Crater cracks (104)	$l \leq 0,4s$	Not permitted	Not permitted
11a	Continuous undercut (5011)	Smooth transition is required $h \leq 0,2t$, max. 1 mm	Smooth transition is required $h \leq 0,1t$, max. 0,5 mm	Not permitted
11b	Intermittent undercut (5012)	Smooth transition is required $h \leq 0,2t$, max. 1,5 mm $l \leq 25$ mm	Smooth transition is required $h \leq 0,1t$, max. 1 mm $l \leq 25$ mm	Smooth transition is required $h \leq 0,1t$, max. 0,5 mm $l \leq 25$ mm
12	Excess penetration (504)	$h \leq 5$ mm	$h \leq 4$ mm	$h \leq 3$ mm
13	Root concavity (515)	$l \leq 25$ mm $h \leq 0,2t$, max. 1,5 mm	$l \leq 25$ mm $h \leq 0,1t$, max. 1 mm	$l \leq 25$ mm $h \leq 0,05t$, max. 0,5 mm
14	Shrinkage groove (5013)	$l \leq 25$ mm $h \leq 0,2t$, max. 1,5 mm	$l \leq 25$ mm $h \leq 0,1t$, max. 1 mm	$l \leq 25$ mm $h \leq 0,05t$, max. 0,5 mm

^a Acceptance levels 3 and 2 may be specified with suffix X which denotes that all indications over 25 mm are unacceptable.

Annex A (informative)

Guide to the limitations of radiographic testing¹⁾

A.1 Volumetric imperfections in butt welds

Porosities and gas pores (2011, 2013, 2015 and 2017)

Wormholes and elongated cavities (2016 and 2015)

Oxide inclusions (303)

Tungsten inclusions (3041)

The above imperfections listed in Table 2 will be readily detected using radiographic technique A or B of ISO 17636 as shown in Table 1 of this part of ISO 10675.

A.2 Cracks in butt welds

Crater cracks (104)

Cracks (100)

The detectability of cracks by radiographic testing depends on the crack height, the ramification (presence of branching parts), opening width, direction of the X-ray beam to crack orientation and radiographic technique parameters.

Reliable detection of all cracks is therefore limited. The use of radiographic technique B or better, as specified in ISO 17636, will provide better crack detectability than radiographic technique A.

A.3 Planar imperfections in butt welds

Lack of fusion (401)

Lack of penetration (402)

The detection of lack of fusion and lack of penetration depends on characteristics of imperfections and radiographic technique parameters.

Lack of side wall fusion will probably not be detected (except it is associated with other imperfections such as slag inclusions) unless it is radiographed in direction of the side wall.

¹⁾ The numbers between brackets conform to those used in ISO 6520-1.

Annex B (informative)

Examples for determination of percentage (%) of imperfections

The following figures give a presentation of different area percentage (%) of imperfections. This should assist the assessment of imperfections on radiographs and fracture surfaces.

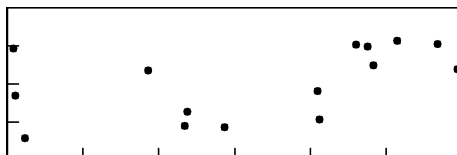


Figure B.1 — 1 %

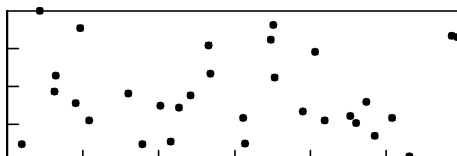


Figure B.2 — 2 %

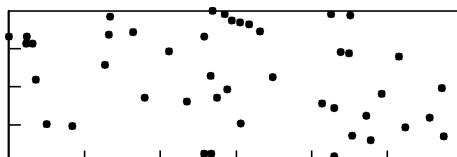


Figure B.3 — 3 %

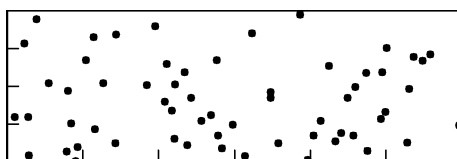


Figure B.4 — 4 %

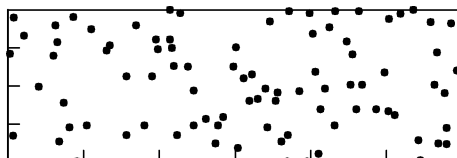


Figure B.5 — 6 %

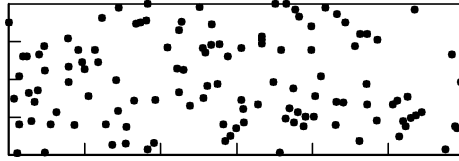


Figure B.6 — 8 %

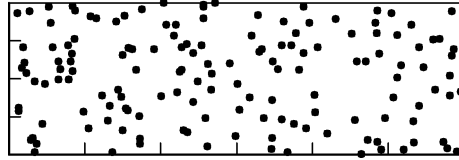


Figure B.7 — 10 %

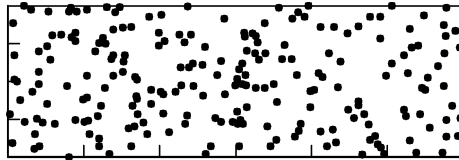


Figure B.8 — 15 %

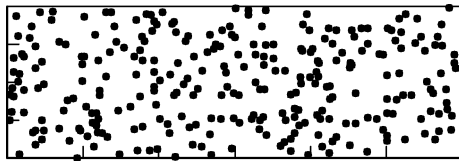


Figure B.9 — 20 %

Annex C (informative)

Sum of acceptable areas

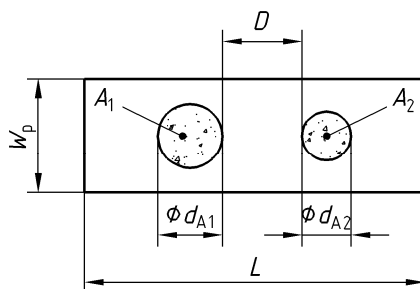


Figure C.1 — Clustered porosity, $D > d_{A2}$

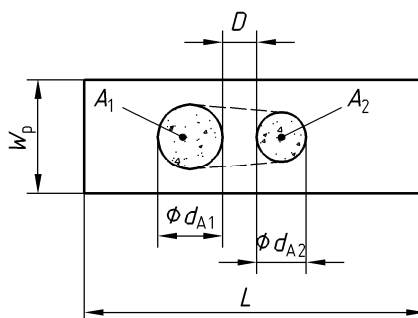


Figure C.2 — Clustered porosity, $D = d_{A2}$

The sum of the different pore areas ($A_1 + A_2 + \dots$) related to the evaluation area $L \times w_p$ (Figure C.1).

If D is less than d_{A1} or d_{A2} , whatever is smaller, an envelope surrounding the porosity area $A_1 + A_2$ shall be considered as one area of imperfection (Figure C.2).

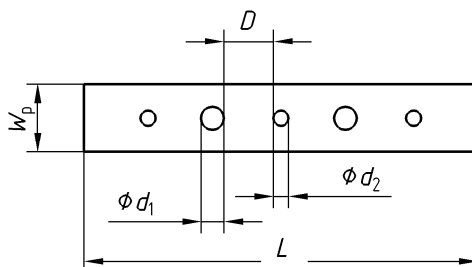


Figure C.3 — Linear porosity, $D > d_2$

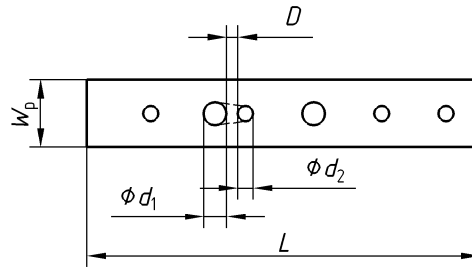


Figure C.4 — Linear porosity, $D = d_2$

The sum of the different pore areas $\left(\frac{d_1^2 \cdot \pi}{4} + \frac{d_2^2 \cdot \pi}{4} + \dots \right)$ related to the evaluation area $L \times w_p$ (Figure C.3).

If D is smaller than the smaller diameter of one of the neighbouring pores, the full connected area of the two pores is to be taken into the sum of imperfections (Figure C.4).

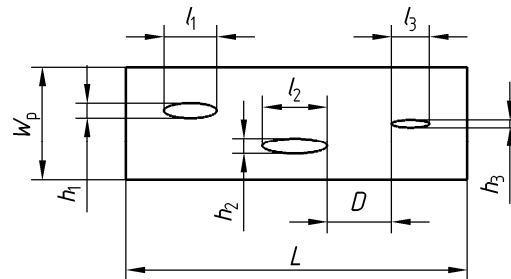


Figure C.5 — Elongated cavities and wormholes, $D > l_3$

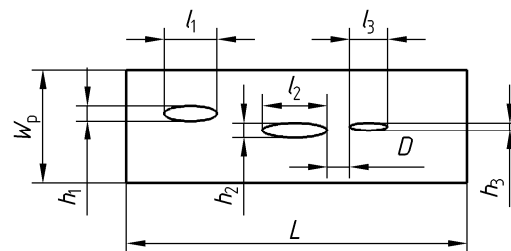


Figure C.6 — Elongated cavities and wormholes, $D = l_3$

The sum of the length of indications Σl shall be determined for each testing length L (Figure C.5).

If D is smaller than the shorter length of one of the neighbouring imperfections, the full connection of the two imperfections is to be taken into the sum of imperfections (Figure C.6).

Bibliography

- [1] ISO 17635, *Non-destructive testing of welds — General rules for metallic materials*
- [2] ISO 17637, *Non-destructive testing of welds — Visual testing of fusion-welded joints*

British Standards Institution (BSI)

BSI is the national body responsible for preparing British Standards and other standards-related publications, information and services.

BSI is incorporated by Royal Charter. British Standards and other standardization products are published by BSI Standards Limited.

About us

We bring together business, industry, government, consumers, innovators and others to shape their combined experience and expertise into standards-based solutions.

The knowledge embodied in our standards has been carefully assembled in a dependable format and refined through our open consultation process. Organizations of all sizes and across all sectors choose standards to help them achieve their goals.

Information on standards

We can provide you with the knowledge that your organization needs to succeed. Find out more about British Standards by visiting our website at bsigroup.com/standards or contacting our Customer Services team or Knowledge Centre.

Buying standards

You can buy and download PDF versions of BSI publications, including British and adopted European and international standards, through our website at bsigroup.com/shop, where hard copies can also be purchased.

If you need international and foreign standards from other Standards Development Organizations, hard copies can be ordered from our Customer Services team.

Subscriptions

Our range of subscription services are designed to make using standards easier for you. For further information on our subscription products go to bsigroup.com/subscriptions.

With **British Standards Online (BSOL)** you'll have instant access to over 55,000 British and adopted European and international standards from your desktop. It's available 24/7 and is refreshed daily so you'll always be up to date.

You can keep in touch with standards developments and receive substantial discounts on the purchase price of standards, both in single copy and subscription format, by becoming a **BSI Subscribing Member**.

PLUS is an updating service exclusive to BSI Subscribing Members. You will automatically receive the latest hard copy of your standards when they're revised or replaced.

To find out more about becoming a BSI Subscribing Member and the benefits of membership, please visit bsigroup.com/shop.

With a **Multi-User Network Licence (MUNL)** you are able to host standards publications on your intranet. Licences can cover as few or as many users as you wish. With updates supplied as soon as they're available, you can be sure your documentation is current. For further information, email bsmusales@bsigroup.com.

BSI Group Headquarters

389 Chiswick High Road London W4 4AL UK

Revisions

Our British Standards and other publications are updated by amendment or revision.

We continually improve the quality of our products and services to benefit your business. If you find an inaccuracy or ambiguity within a British Standard or other BSI publication please inform the Knowledge Centre.

Copyright

All the data, software and documentation set out in all British Standards and other BSI publications are the property of and copyrighted by BSI, or some person or entity that owns copyright in the information used (such as the international standardization bodies) and has formally licensed such information to BSI for commercial publication and use. Except as permitted under the Copyright, Designs and Patents Act 1988 no extract may be reproduced, stored in a retrieval system or transmitted in any form or by any means – electronic, photocopying, recording or otherwise – without prior written permission from BSI. Details and advice can be obtained from the Copyright & Licensing Department.

Useful Contacts:

Customer Services

Tel: +44 845 086 9001

Email (orders): orders@bsigroup.com

Email (enquiries): cservices@bsigroup.com

Subscriptions

Tel: +44 845 086 9001

Email: subscriptions@bsigroup.com

Knowledge Centre

Tel: +44 20 8996 7004

Email: knowledgecentre@bsigroup.com

Copyright & Licensing

Tel: +44 20 8996 7070

Email: copyright@bsigroup.com



...making excellence a habit.™