

Piston-operated volumetric apparatus —

Part 4: Dilutors

ICS 17.060

National foreword

This British Standard is the UK implementation of EN ISO 8655-4:2002. It is identical with ISO 8655-4:2002, incorporating corrigendum December 2008. It, together with Parts 2, 3 and 5 of BS EN ISO 8655:2002, supersedes BS 7653-2:1993 which is withdrawn.

The start and finish of text introduced or altered by corrigendum is indicated in the text by tags. Text altered by ISO corrigendum December 2008 is indicated in the text by **[AC1]** **<AC1**.

The UK participation in its preparation was entrusted by Technical Committee LBI/36, Laboratory glassware and related apparatus, to Subcommittee LBI/36/1, General and volumetric, glass and plastics apparatus.

A list of organizations represented on this committee can be obtained on request to its secretary.

This publication does not purport to include all the necessary provisions of a contract. Users are responsible for its correct application.

Compliance with a British Standard cannot confer immunity from legal obligations.

This British Standard, having been prepared under the direction of the Materials and Chemicals Sector Policy and Strategy Committee, was published under the authority of the Standards Policy and Strategy Committee on 22 October 2002

© BSI 2009

Amendments/corrigenda issued since publication

Date	Comments
30 June 2009	Implementation of ISO corrigendum December 2008

ICS 17.060

English version

**Piston-operated volumetric apparatus - Part 4: Dilutors (ISO
8655-4:2002)**

Appareils volumétriques à piston - Partie 4: Diluteurs (ISO
8655-4:2002)

Volumenmessgeräte mit Hubkolben - Teil 4: Dilutoren (ISO
8655-4:2002)

This European Standard was approved by CEN on 13 July 2002.

CEN members are bound to comply with the CEN/CENELEC Internal Regulations which stipulate the conditions for giving this European Standard the status of a national standard without any alteration. Up-to-date lists and bibliographical references concerning such national standards may be obtained on application to the Management Centre or to any CEN member.

This European Standard exists in three official versions (English, French, German). A version in any other language made by translation under the responsibility of a CEN member into its own language and notified to the Management Centre has the same status as the official versions.

CEN members are the national standards bodies of Austria, Belgium, Czech Republic, Denmark, Finland, France, Germany, Greece, Iceland, Ireland, Italy, Luxembourg, Malta, Netherlands, Norway, Portugal, Spain, Sweden, Switzerland and United Kingdom.



EUROPEAN COMMITTEE FOR STANDARDIZATION
COMITÉ EUROPÉEN DE NORMALISATION
EUROPÄISCHES KOMITEE FÜR NORMUNG

Management Centre: rue de Stassart, 36 B-1050 Brussels

Foreword

This document (ISO 8655-4:2002) has been prepared by Technical Committee ISO/TC 48 "Laboratory glassware and related apparatus" in collaboration with Technical Committee CEN/TC 332 "Laboratory equipment", the secretariat of which is held by DIN.

This European Standard shall be given the status of a national standard, either by publication of an identical text or by endorsement, at the latest by March 2003, and conflicting national standards shall be withdrawn at the latest by March 2003.

According to the CEN/CENELEC Internal Regulations, the national standards organizations of the following countries are bound to implement this European Standard: Austria, Belgium, Czech Republic, Denmark, Finland, France, Germany, Greece, Iceland, Ireland, Italy, Luxembourg, Malta, Netherlands, Norway, Portugal, Spain, Sweden, Switzerland and the United Kingdom.

Endorsement notice

The text of the International Standard ISO 8655-4:2002 has been approved by CEN as a European Standard without any modifications.

NOTE Normative references to International Standards are listed in Annex ZA (normative).

INTERNATIONAL STANDARD

ISO
8655-4

First edition
2002-09-15

Piston-operated volumetric apparatus — Part 4: Dilutors

Appareils volumétriques à piston —

Partie 4: Diluteurs



Reference number
ISO 8655-4:2002(E)

Contents

	Page
1 Scope	1
2 Normative references	1
3 Terms and definitions	1
4 Principle of operation	2
5 Adjustment	2
6 Metrological performance requirements	3
7 User information	4
8 Marking	4
Bibliography.....	6

Foreword

ISO (the International Organization for Standardization) is a worldwide federation of national standards bodies (ISO member bodies). The work of preparing International Standards is normally carried out through ISO technical committees. Each member body interested in a subject for which a technical committee has been established has the right to be represented on that committee. International organizations, governmental and non-governmental, in liaison with ISO, also take part in the work. ISO collaborates closely with the International Electrotechnical Commission (IEC) on all matters of electrotechnical standardization.

International Standards are drafted in accordance with the rules given in the ISO/IEC Directives, Part 3.

Draft International Standards adopted by the technical committees are circulated to the member bodies for voting. Publication as an International Standard requires approval by at least 75 % of the member bodies casting a vote.

Attention is drawn to the possibility that some of the elements of this part of ISO 8655 may be the subject of patent rights. ISO shall not be held responsible for identifying any or all such patent rights.

International Standard ISO 8655-4 was prepared by Technical Committee ISO/TC 48, *Laboratory glassware and related apparatus*, Subcommittee SC 1, *Volumetric instruments*.

ISO 8655 consists of the following parts, under the general title *Piston-operated volumetric apparatus*:

- *Part 1: Terminology, general requirements and user recommendations*
- *Part 2: Piston pipettes*
- *Part 3: Piston burettes*
- *Part 4: Dilutors*
- *Part 5: Dispensers*
- *Part 6: Gravimetric methods for the determination of measurement error*

AC1 — *Part 7: Non-gravimetric methods for the assessment of equipment performance* AC1

Introduction

ISO 8655 addresses the needs of:

- suppliers, as a basis for quality control including, where appropriate, the issuance of supplier's declarations;
- test houses and other bodies, as a basis for independent certification;
- users of the equipment, to enable routine checking of accuracy.

The tests specified should be carried out by trained personnel.

Piston-operated volumetric apparatus —

Part 4: Dilutors

1 Scope

This part of ISO 8655 specifies

- metrological requirements,
- maximum permissible errors,
- requirements for marking and
- information to be provided for users,

for dilutors with a sample uptake capacity (In) from 5 μ l to 10 ml and a diluent capacity (Ex) from 50 μ l to 100 ml. They are designed to deliver the sample and diluent together in measured proportion and measured volume.

NOTE General requirements and definitions of terms of piston-operated volumetric apparatus are given in ISO 8655-1. Conformity testing (type evaluation) of piston-operated volumetric apparatus is given in ISO 8655-6. AC₁ Alternative test methods such as photometric and titrimetric methods are given in ISO 8655-7. AC₁ For all other tests (e.g. quality assurance by the supplier, analytical and measuring equipment quality assurance by the user) see ISO 8655-6 or alternative test methods. For safety requirements of electrically powered piston pipettes, see IEC 61010-1.

2 Normative references

The following normative documents contain provisions which, through reference in this text, constitute provisions of this part of ISO 8655. For dated references, subsequent amendments to, or revisions of, any of these publications do not apply. However, parties to agreements based on this part of ISO 8655 are encouraged to investigate the possibility of applying the most recent editions of the normative documents indicated below. For undated references, the latest edition of the normative document referred to applies. Members of ISO and IEC maintain registers of currently valid International Standards.

ISO 3696, *Water for analytical laboratory use — Specification and test methods*

ISO 8655-1:2002, *Piston-operated volumetric apparatus — Part 1: Terminology, general requirements and user recommendations*

ISO 8655-6:2002, *Piston-operated volumetric apparatus — Part 6: Gravimetric methods for the determination of measurement error*

3 Terms and definitions

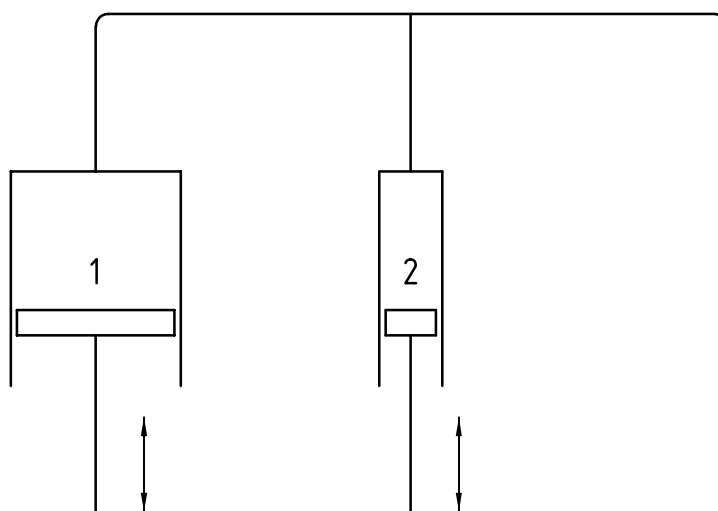
For the purposes of this part of ISO 8655, the terms and definitions given in ISO 8655-1 apply.

4 Principle of operation

A dilutor is designed to aspirate accurately a measured volume of a sample liquid and to deliver it together with an accurately measured volume of diluent. Dilutors may be operated manually, electrically, pneumatically or hydraulically and may be hand-held, bottle-top mounting or free-standing bench-top apparatus. They can also be automated analyser's components. The drive components may be integral with, or manually separable from the volumetric measuring components (change-over units).

Prior to delivery of diluent, the diluent piston system is charged by aspiration of diluent from a reservoir. After air-bubble-free filling of the system, diluent is drawn into the volume measuring cylinder by the diluent piston, either directly, via the uptake and delivery probe, or indirectly, from a reservoir until a volume controlling limit is reached. A measured volume of sample is then aspirated into the uptake and delivery probe.

The uptake of sample may be controlled by a second limit to the movement of the diluent piston, or it may involve a second, dedicated, cylinder and piston with valves. During delivery, the sample volume in the uptake and delivery probe is expelled, followed by the measured quantity of diluent.



Key

- 1 Volume of diluent
- 2 Piston for sample uptake

Figure 1 — Schematic drawing of a dilutor

5 Adjustment

5.1 A dilutor shall be adjusted by its supplier for the uptake and delivery of its stated volumes and for the standard reference temperature of 20 °C, using grade 3 water as specified in ISO 3696.

AC1 When a dilutor is required for use in a country which has adopted a standard reference temperature of 27 °C (the alternative recommended for tropical use), this figure shall be substituted for 20 °C. **AC1**

5.2 If the dilutor is designed to have its factory preset adjustment altered by the user, the design shall prevent unintentional readjustment. If the user readjusts the dilutor, it shall be clearly and unequivocally indicated on the outside of the dilutor that readjustment has been effected, for example by means of a mark, a broken seal, or a label affixed by the user.

5.3 Type testing of the adjustment shall satisfy the performance requirements specified in clause 6 when the dilutor is tested in accordance with ISO 8655-6.

6 Metrological performance requirements

The conformity test (type evaluation) specified in ISO 8655-6 evaluates the total system of the dilutor, comprising the piston units and valves, drive, uptake and delivery probe and tubes and, if applicable, the change-over unit (see clause 4).

The conformity test shall be carried out in accordance with ISO 8655-6 by

- the supplier, prior to the issuance of a supplier's declaration of conformity, or
- a test house or other authorized body, prior to the issuance of a certificate of conformity.

For conformity tests, the maximum permissible errors of Tables 1 and 2 shall apply. If a supplier's declaration or a certificate of conformity is issued, it shall be stated precisely which specific components have been tested. The use of substitute tubing involves alteration of the system type-tested and this may invalidate the supplier's or third party certified volumetric performance.

Table 1 — Maximum permissible errors of sample uptake

Nominal volume μl	Maximum permissible systematic error		Maximum permissible random error	
	$\pm \%$	$\pm \mu\text{l}^{\text{a}}$	$\pm \%^{\text{b}}$	$\pm \mu\text{l}^{\text{c}}$
5	3,0	0,15	2	0,1
10	2,0	0,2	0,8	0,08
20	2,0	0,4	0,8	0,16
50	1,8	0,9	0,4	0,2
100	1,5	1,5	0,2	0,2
200	1,0	2,0	0,2	0,4
500	0,8	4,0	0,2	1,0
1 000	0,6	6,0	0,15	1,5

^a Expressed as the deviation of the mean of a tenfold measurement from the nominal volume or from the selected volume (see ISO 8655-6:2002, 8.4).

^b Expressed as the coefficient of variation of a tenfold measurement (see ISO 8655-6:2002, 8.5)

^c Expressed as the repeatability standard deviation of a tenfold measurement (see ISO 8655-6:2002, 8.5).

Table 2 — Maximum permissible errors of diluent

Nominal volume ml	Maximum permissible systematic error		Maximum permissible random error	
	$\pm \%$	$\pm \mu\text{l}^{\text{a}}$	$\pm \%^{\text{b}}$	$\pm \mu\text{l}^{\text{c}}$
0,05	1,8	0,9	0,6	0,3
0,1	1,5	1,5	0,5	0,5
0,2	1,0	2,0	0,4	0,8
0,5	0,8	4,0	0,2	1,0
1	0,6	6,0	0,2	2,0
2	0,6	12,0	0,2	4,0
5	0,6	30	0,15	7,5
10	0,6	60	0,15	15
25	0,6	150	0,15	37,5
50	0,6	300	0,15	75
100	0,6	600	0,15	150

^a Expressed as the deviation of the mean of a tenfold measurement from the nominal volume or from the selected volume (see ISO 8655-6:2002, 8.4).

^b Expressed as the coefficient of variation of a tenfold measurement (see ISO 8655-6:2002, 8.5).

^c Expressed as the repeatability standard deviation of a tenfold measurement (see ISO 8655-6:2002, 8.5).

For nominal volumes of sample uptake greater than 1 ml, the maximum permissible errors of diluent specified in Table 2 shall apply.

For the maximum permissible errors of dilutors with intermediate nominal volumes between those given in Tables 1 and 2, the absolute values for the next greater nominal volume shall apply. In the conformity test, the maximum permissible errors for the nominal volumes in Tables 1 and 2 apply to every selectable volume throughout the useful volume range of the dilutor; i.e. the maximum permissible systematic errors of the sample uptake of a dilutor with a useful volume range from 10 μl to 100 μl are $\pm 1,5 \mu\text{l}$ and the maximum permissible random errors are $\pm 0,2 \mu\text{l}$ for every selected volume.

If the dilutor is manufactured with a single cylinder or with two identical cylinders alternatively used for sample uptake and/or delivery of diluent, the most stringent maximum permissible errors of Tables 1 and 2 for each volume shall be applied.

7 User information

Each dilutor shall be accompanied by a user information in accordance with ISO 8655-1:2002, clause 6. The instructions for use shall contain information regarding at least the following items:

- a) adjustment of sample and diluent channel (Ex or In) and reference temperature $\overline{AC_1}$ (20 °C or 27 °C) $\overline{AC_1}$;
- b) nominal volumes of sample and diluent channels; where this is not practicable [clause 8, item b)], information shall be provided to enable the nominal volume to be correctly identified from markings on the appropriate unit or module;
- c) smallest sample and diluent volume which can be delivered observing the maximum permissible errors in accordance with clause 6;
- d) correct handling;
- e) information regarding the care, cleaning and maintenance;
- f) advice about air-bubble-free filling;
- g) contents of the apparatus package including accessories.

The following information should preferably also be included:

- h) systematic and random error of measurement with reference to the procedures for their testing by the user in this part of ISO 8655 and in ISO 8655-6 (if included, the systematic and random error of measurement shall be specified at the nominal volume, at 50 % of the nominal volume, and either at 10 % of the nominal volume or at the smallest volume observing the maximum permissible errors specified in this part of ISO 8655).

If applicable, information shall be provided regarding the purpose and procedure for user adjustment. If the dilutor cannot properly be used as delivered, detailed information concerning the required additional parts and a recommendation as to where to acquire them, shall be included.

8 Marking

The following data shall be permanently marked on each dilutor:

- a) nominal volume of sample and diluent channel; where this is not practicable due to a modular design, the volumetric modules shall be marked either with their nominal volumes or information to enable the user to obtain the nominal volume from the user information [see clause 7, item b)];
- b) supplier's name and/or trademark;
- c) supplier's apparatus name;
- d) unit of measurement;
- e) serial number of the dilutor.

The following information should preferably also be permanently marked:

- f) abbreviation for the adjustment and the reference temperature $\langle AC_1 \rangle$ “20 °C” or “27 °C” $\langle AC_1 \rangle$;
- g) reference to this part of ISO 8655, i.e. “ISO 8655-4”.

Where appropriate, a conformity mark may be affixed to the dilutor.

Bibliography

- [1] IEC 61010-1, *Safety requirements for electrical equipment for measurement, control and laboratory use — Part 1: General requirements*

Annex ZA (normative)

Normative references to international publications with their relevant European publications

This European Standard incorporates by dated or undated reference, provisions from other publications. These normative references are cited at the appropriate places in the text and the publications are listed hereafter. For dated references, subsequent amendments to or revisions of any of these publications apply to this European Standard only when incorporated in it by amendment or revision. For undated references the latest edition of the publication referred to applies (including amendments).

NOTE Where an International Publication has been modified by common modifications, indicated by (mod.), the relevant EN/HD applies.

Publication	Year	Title	EN	Year
EN ISO 3696	1995	Water for analytical laboratory use - Specification and test methods	ISO 3696	1987

BSI - British Standards Institution

BSI is the independent national body responsible for preparing British Standards. It presents the UK view on standards in Europe and at the international level. It is incorporated by Royal Charter.

Revisions

British Standards are updated by amendment or revision. Users of British Standards should make sure that they possess the latest amendments or editions.

It is the constant aim of BSI to improve the quality of our products and services. We would be grateful if anyone finding an inaccuracy or ambiguity while using this British Standard would inform the Secretary of the technical committee responsible, the identity of which can be found on the inside front cover. Tel: +44 (0)20 8996 9000. Fax: +44 (0)20 8996 7400.

BSI offers members an individual updating service called PLUS which ensures that subscribers automatically receive the latest editions of standards.

Buying standards

Orders for all BSI, international and foreign standards publications should be addressed to Customer Services. Tel: +44 (0)20 8996 9001. Fax: +44 (0)20 8996 7001 Email: orders@bsigroup.com You may also buy directly using a debit/credit card from the BSI Shop on the Website <http://www.bsigroup.com/shop>

In response to orders for international standards, it is BSI policy to supply the BSI implementation of those that have been published as British Standards, unless otherwise requested.

Information on standards

BSI provides a wide range of information on national, European and international standards through its Library and its Technical Help to Exporters Service. Various BSI electronic information services are also available which give details on all its products and services. Contact Information Centre. Tel: +44 (0)20 8996 7111 Fax: +44 (0)20 8996 7048 Email: info@bsigroup.com

Subscribing members of BSI are kept up to date with standards developments and receive substantial discounts on the purchase price of standards. For details of these and other benefits contact Membership Administration. Tel: +44 (0)20 8996 7002 Fax: +44 (0)20 8996 7001 Email: membership@bsigroup.com

Information regarding online access to British Standards via British Standards Online can be found at <http://www.bsigroup.com/BSOL>

Further information about BSI is available on the BSI website at <http://www.bsigroup.com>

Copyright

Copyright subsists in all BSI publications. BSI also holds the copyright, in the UK, of the publications of the international standardization bodies. Except as permitted under the Copyright, Designs and Patents Act 1988 no extract may be reproduced, stored in a retrieval system or transmitted in any form or by any means – electronic, photocopying, recording or otherwise – without prior written permission from BSI.

This does not preclude the free use, in the course of implementing the standard, of necessary details such as symbols, and size, type or grade designations. If these details are to be used for any other purpose than implementation then the prior written permission of BSI must be obtained.

Details and advice can be obtained from the Copyright and Licensing Manager. Tel: +44 (0)20 8996 7070 Email: copyright@bsigroup.com