

Technical drawings — Construction drawings — General principles of presentation for general arrangement and assembly drawings

The European Standard EN ISO 7519:1996 has the status of a
British Standard

ICS 01.100.30

Committees responsible for this British Standard

The preparation of this British Standard was entrusted to Technical Committee B/212, Tolerances, drawing practice, modular co-ordination, joints, project information and computer modelling, upon which the following bodies were represented:

Architects' and Surveyors' Institute
 Association of County Councils
 British Institute of Architectural Technologists
 Building Employers' Confederation
 Chartered Institute of Building
 Chartered Institution of Building Services Engineers
 Department of the Environment (Building Research Establishment)
 Institution of Civil Engineers
 Institution of Structural Engineers
 Royal Institute of British Architects
 Royal Institution of Chartered Surveyors
 Society of Chief Architects of Local Authorities

The following bodies were also represented in the drafting of the standard, through subcommittees and panels:

Association of Building Engineers
 British Constructional Steelwork Association Ltd
 British Standards Society
 Landscape Institute

This British Standard, having been prepared under the direction of the Sector Board for Building and Civil Engineering, was published under the authority of the Standards Board and comes into effect on 15 October 1997

© BSI 09-1999

The following BSI references relate to the work on this standard:
 Committee reference B/212
 Draft for comment 96/106467 DC

ISBN 0 580 28349 6

Amendments issued since publication

Amd. No.	Date	Comments

Contents

	Page
Committees responsible	Inside front cover
National foreword	ii
Foreword	2
Foreword	iii
Text of ISO 7519	1

National foreword

This British Standard has been prepared by Technical Committee B/212, and is the English language version of EN ISO 7519:1996 *Technical drawings — Construction drawings — General principles of presentation for general arrangement and assembly drawings*, published by the European Committee for Standardization (CEN). It is identical with ISO 7519:1991, published by the International Organization for Standardization (ISO).

A British Standard does not purport to include all the necessary provisions of a contract. Users of British Standards are responsible for their correct application.

Compliance with a British Standard does not of itself confer immunity from legal obligations.

Summary of pages

This document comprises a front cover, an inside front cover, pages i and ii, the EN ISO title page, page 2, the ISO title page, pages ii to iv, pages 1 to 8 and a back cover.

This standard has been updated (see copyright date) and may have had amendments incorporated. This will be indicated in the amendment table on the inside front cover.

ICS 01.100.30

Descriptors: See ISO document

English version

Technical drawings — Construction drawings —
General principles of presentation for general
arrangement and assembly drawings

(ISO 7519:1991)

Dessins techniques — Dessins de
construction — Principes généraux de
présentation pour des dessins d'ensemble et
d'assemblage
(ISO 7519:1991)

Technische Zeichnungen — Zeichnungen für
das Bauwesen — Allgemeine Grundlagen für
Anordnungspläne und
Zusammenbauzeichnungen
(ISO 7519:1991)

This European Standard was approved by CEN on 1996-10-25. CEN members are bound to comply with the CEN/CENELEC Internal Regulations which stipulate the conditions for giving this European Standard the status of a national standard without any alteration.

Up-to-date lists and bibliographical references concerning such national standards may be obtained on application to the Central Secretariat or to any CEN member.

The European Standards exist in three official versions (English, French, German). A version in any other language made by translation under the responsibility of a CEN member into its own language and notified to the Central Secretariat has the same status as the official versions.

CEN members are the national standards bodies of Austria, Belgium, Denmark, Finland, France, Germany, Greece, Iceland, Ireland, Italy, Luxembourg, Netherlands, Norway, Portugal, Spain, Sweden, Switzerland and United Kingdom.

CEN

European Committee for Standardization
Comité Européen de Normalisation
Europäisches Komitee für Normung

Central Secretariat: rue de Stassart 36, B-1050 Brussels

Foreword

The text of the International Standard from Technical Committee ISO/TC 10 “Technical drawings, product definition and related documentation” of the International Organization for Standardization (ISO) has been taken over as an European Standard by CEN/CS.

This European Standard shall be given the status of a national standard, either by publication of an identical text or by endorsement, at the latest by May 1997, and conflicting national standards shall be withdrawn at the latest by May 1997.

According to the CEN/CENELEC Internal Regulations, the national standards organizations of the following countries are bound to implement this European Standard: Austria, Belgium, Denmark, Finland, France, Germany, Greece, Iceland, Ireland, Italy, Luxembourg, Netherlands, Norway, Portugal, Spain, Sweden, Switzerland and the United Kingdom.

Endorsement notice

The text of the International Standard ISO 7519:1991 has been approved by CEN as a European Standard without any modification.

INTERNATIONAL
STANDARD

ISO
7519

First edition
1991-11-15

**Technical drawings — Construction drawings —
General principles of presentation for general
arrangement and assembly drawings**

*Dessins techniques — Dessins de construction — Principes généraux de
présentation pour des dessins d'ensemble et d'assemblage*



Reference number
ISO 7519:1991(E)

Contents

	Page
Foreword	iii
1 Scope	1
2 Normative references	1
3 General	1
4 Lines	1
5 Simplified representation of doors and windows	3
6 Conventional representation	6
7 Arrow symbols	7
Annex A (informative) Bibliography	8
Figure 1 — Examples of outlines of parts in section and in view	2
Figure 2 — Boundaries of different materials	2
Figure 3 — Example showing a sloping floor	2
Figure 4 — Stairs	3
Figure 5 — Ramp	3
Figure 6 — Examples of doors and windows on plan drawings to large scales	4
Figure 7 — Examples of doors and windows on drawings to small scales	6
Figure 8 — Suspended ceiling	6
Figure 9 — Openings and holes	7
Figure 10 — Recesses	7
Figure 11 — Examples of arrow symbols	7

Foreword

ISO (the International Organization for Standardization) is a worldwide federation of national standards bodies (ISO member bodies). The work of preparing International Standards is normally carried out through ISO technical committees. Each member body interested in a subject for which a technical committee has been established has the right to be represented on that committee. International organizations, governmental and non-governmental, in liaison with ISO, also take part in the work. ISO collaborates closely with the International Electrotechnical Commission (IEC) on all matters of electrotechnical standardization.

Draft International Standards adopted by the technical committees are circulated to the member bodies for voting. Publication as an International Standard requires approval by at least 75 % of the member bodies casting a vote.

International Standard ISO 7519 was prepared by Technical Committee ISO/TC 10, *Technical drawings, product definition and related documentation*, Sub-Committee SC 8, *Construction documentation*.

Annex A of this International Standard is for information only.

Descriptors: Drawings, technical drawings, architectural drawings, construction, graphic methods, specifications.

1 Scope

This International Standard is complementary to ISO 128 for construction drawings and establishes general principles of presentation to be applied to construction drawings for general arrangement and assembly, mainly within the field of building and architectural drawings.

2 Normative references

The following standards contain provisions which, through reference in this text, constitute provisions of this International Standard. At the time of publication, the editions indicated were valid. All standards are subject to revision, and parties to agreements based on this International Standard are encouraged to investigate the possibility of applying the most recent editions of the standards indicated below. Members of IEC and ISO maintain registers of currently valid International Standards.

ISO 128:1982, *Technical drawings — General principles of presentation*.

ISO 129:1985, *Technical drawings — Dimensioning — General principles, definitions, methods of execution and special indications*.

ISO 9431:1990, *Construction drawings — Spaces for drawing and for text, and title blocks on drawing sheets*.

3 General

3.1 Building components which are detailed or specified in other documents (e.g. component range drawings, detail drawings and specifications) can be shown in a very simple manner on general arrangement and assembly drawings.

3.2 The degree of simplification depends on the kind of object represented, the scale of the drawing and the purpose of the documentation.

3.3 In a simplified representation only essential features shall be shown, if possible in outline only. The object shall be drawn to scale.

3.4 Figures in a simplified representation may be completed with graphical symbols, designations and text.

3.5 Reference shall be made, normally in the space for text on the drawing sheet, to the specified documentation for manufacturing, construction and assembly (see ISO 9431).

4 Lines

4.1 The types and description of lines shall be in accordance with ISO 128, with the addition of an extra-thick line.

4.2 An extra-thick line shall be used to stress certain parts.

4.3 The following thicknesses of lines shall be used:

thin line — relative thickness 1;

thick line — relative thickness 2;

extra-thick line — relative thickness 4.

4.4 On an individual drawing, two or three different line thicknesses may be used.

4.5 Outlines of parts in section are generally drawn with thicker lines than those in view (see Figure 1). For parts in section, either continuous thick lines (ISO 128, line type A) or continuous extra-thick lines shall be used.

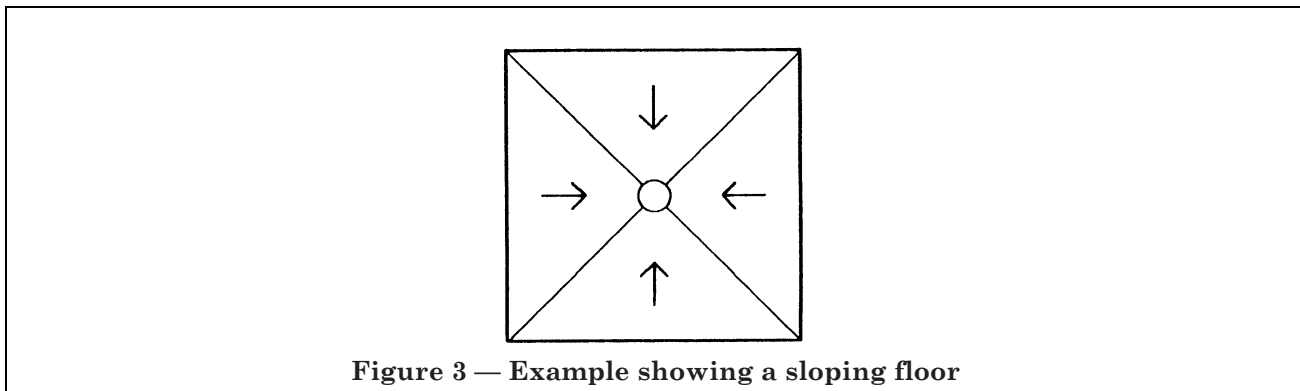
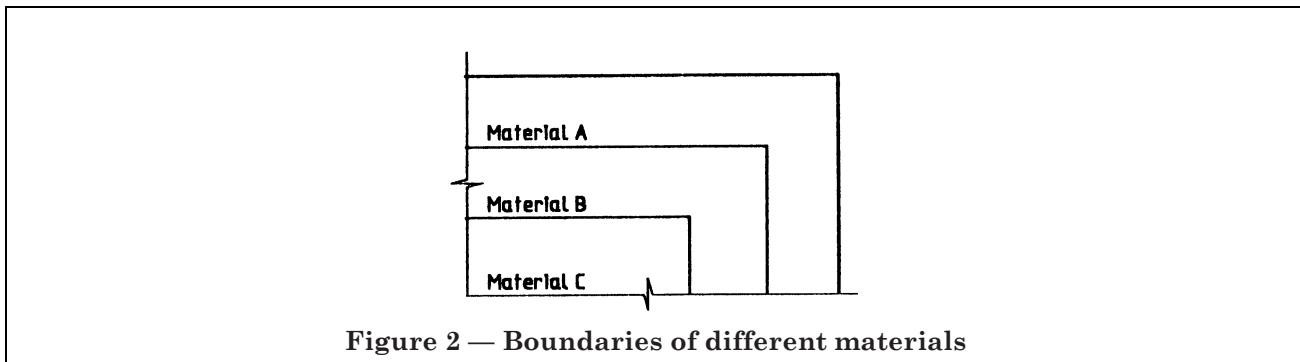
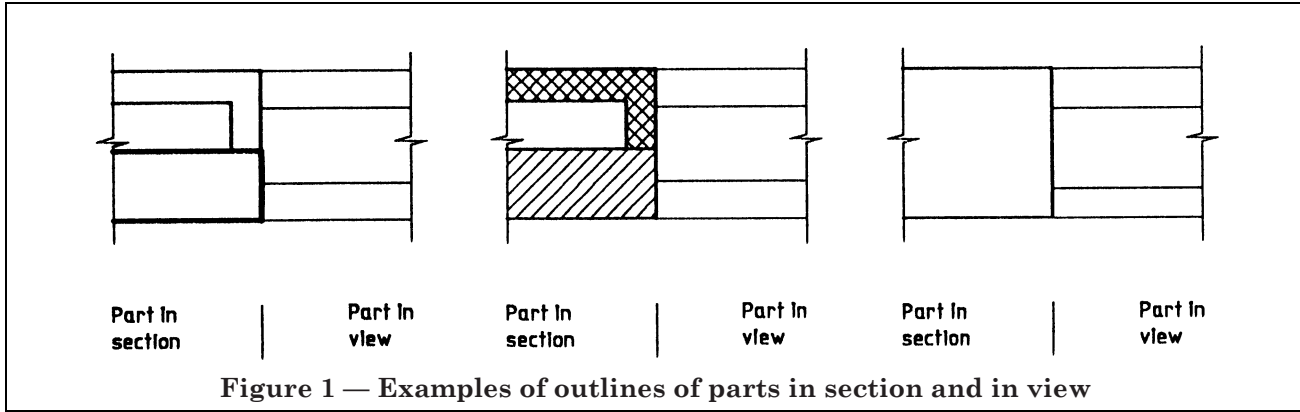
For parts in view, either continuous thick or thin lines (ISO 128, line type A or B) shall be used depending on the line thickness used for sections (the ratio of line thicknesses shall be 1 : 2).

4.6 In order to distinguish parts in section from each other or parts in section from parts in view, different line thicknesses or hatching or shading of areas of parts in section may be used (see Figure 1).

4.7 Boundaries of different materials in view shall be drawn with a continuous thin or thick line (ISO 128, line type B or A) (see Figure 2).

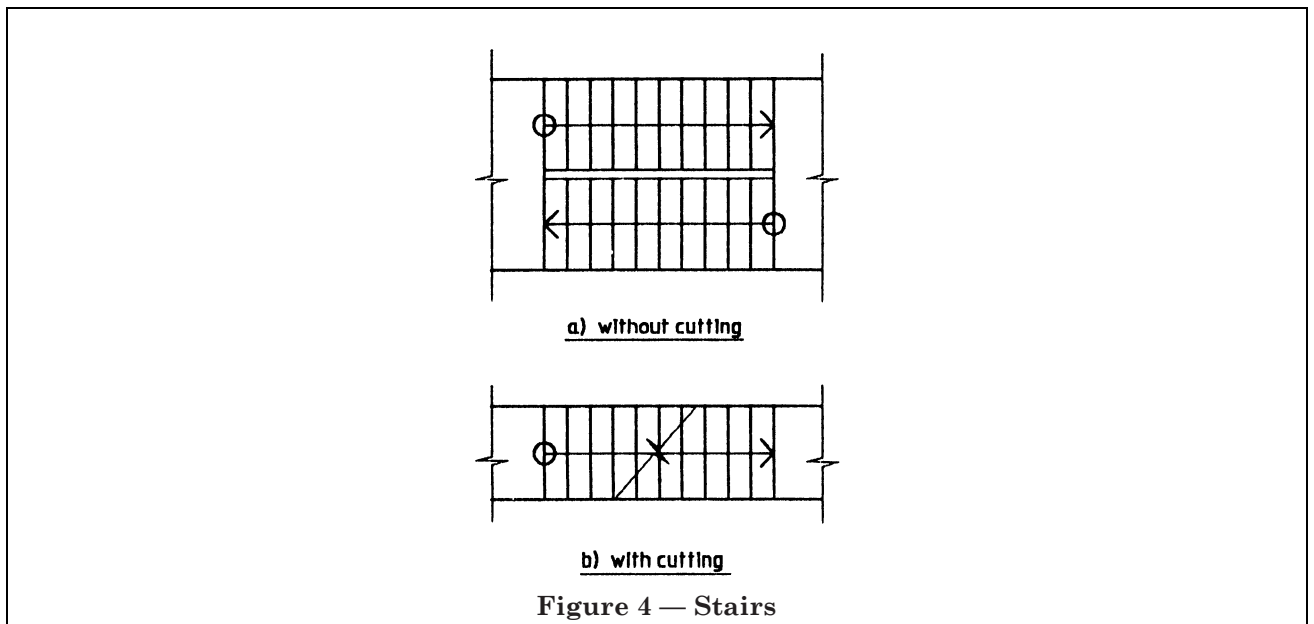
Patterns of materials, e.g. marble and parquet flooring, are not normally shown; if necessary, they should be shown on separate drawings.

4.8 Inclined floors, roofs, etc. shall be drawn on plan drawings with a continuous thin line (ISO 128, line type B). If necessary, levels may be indicated by numerical values in accordance with ISO 129 and the slope may be indicated by an arrow pointing in the direction of fall together with the ratio of inclination (see Figure 3).



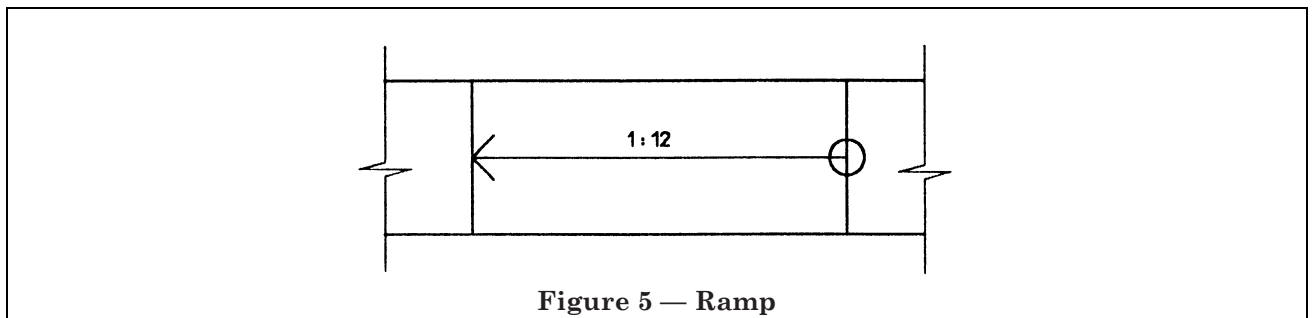
4.9 Stairs shall be shown on plan drawings as follows (see Figure 4).

- a) Stairs shall be drawn with a continuous thin line (ISO 128, line type B).
- b) The direction arrow shall be located on the centre-line of the stairs and shall be drawn with a continuous thin line (ISO 128, line type B), with an open circle indicating the bottom riser and with an open arrowhead indicating the top riser.
- c) The cutting of a flight of stairs shall be shown symbolically by an oblique continuous thin line with zigzags (ISO 128, line type D) [see Figure 4 b)]. In cases where the meaning cannot be misinterpreted, the zigzags may be omitted.
- d) If necessary, levels of landings may be indicated by numerical values and/or the steps may be numbered in the ascending direction, using "1" for the bottom step.



4.10 Ramps shall be shown on plan drawings as follows (see Figure 5).

- a) Ramps shall be drawn with a continuous thin line (ISO 128, line type B).
- b) The direction arrow shall be located on the centre-line of the ramp and shall be drawn with a continuous thin line (ISO 128, line type B), with an open circle indicating the bottom level and with an open arrowhead indicating the top level.
- c) If necessary, the top and bottom levels may be indicated by numerical values in accordance with ISO 129 and/or the slope may be indicated by a ratio of inclination.



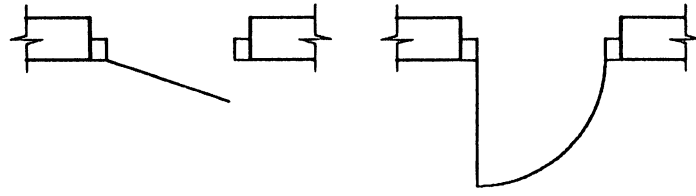
5 Simplified representation of doors and windows

5.1 Doors and windows shall be drawn with a continuous thin or thick line (ISO 128, line type B or A).

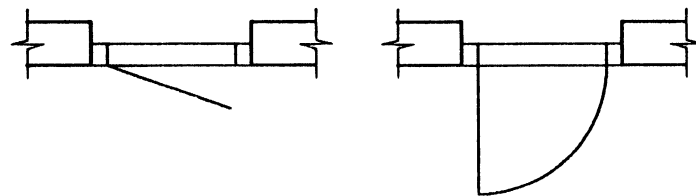
5.2 The openings of doors shall be shown. Openings of side-hung doors shall be shown by drawing the door leaf at an angle of 30° without an arc, or at an angle of 90° with an arc (see Figure 6).

5.3 On drawings to large scales (1 : 50 and larger) doors and windows shall be drawn to show the type, placement, threshold, etc. (see Figure 6).

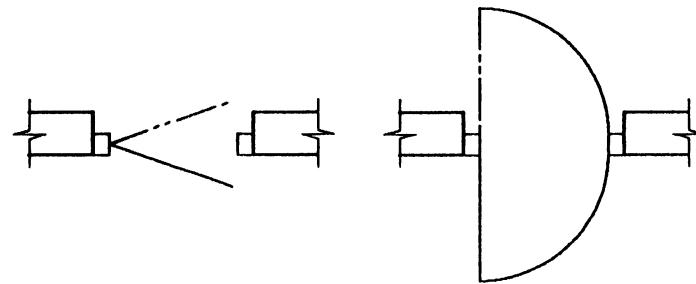
Licensed copy: Lee Shau Kee Library, HKUST, Version correct as of 03/01/2015, (c) The British Standards Institution 2013



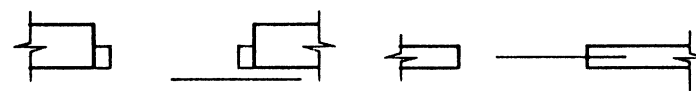
a) Side-hung doors without threshold



b) Side-hung doors with threshold



c) Swing doors

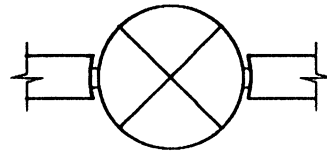
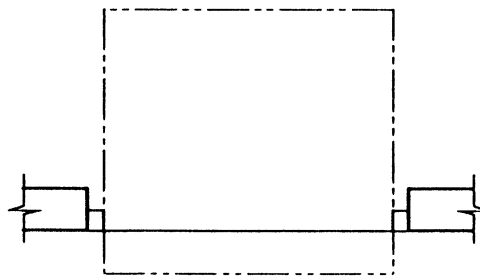
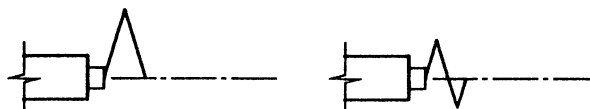
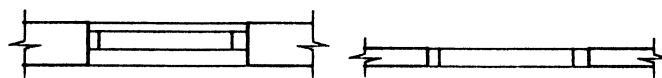


Onface

Sliding door, with recess

d) Sliding doors

Figure 6 — Examples of doors and windows on plan drawings to large scales (continued)

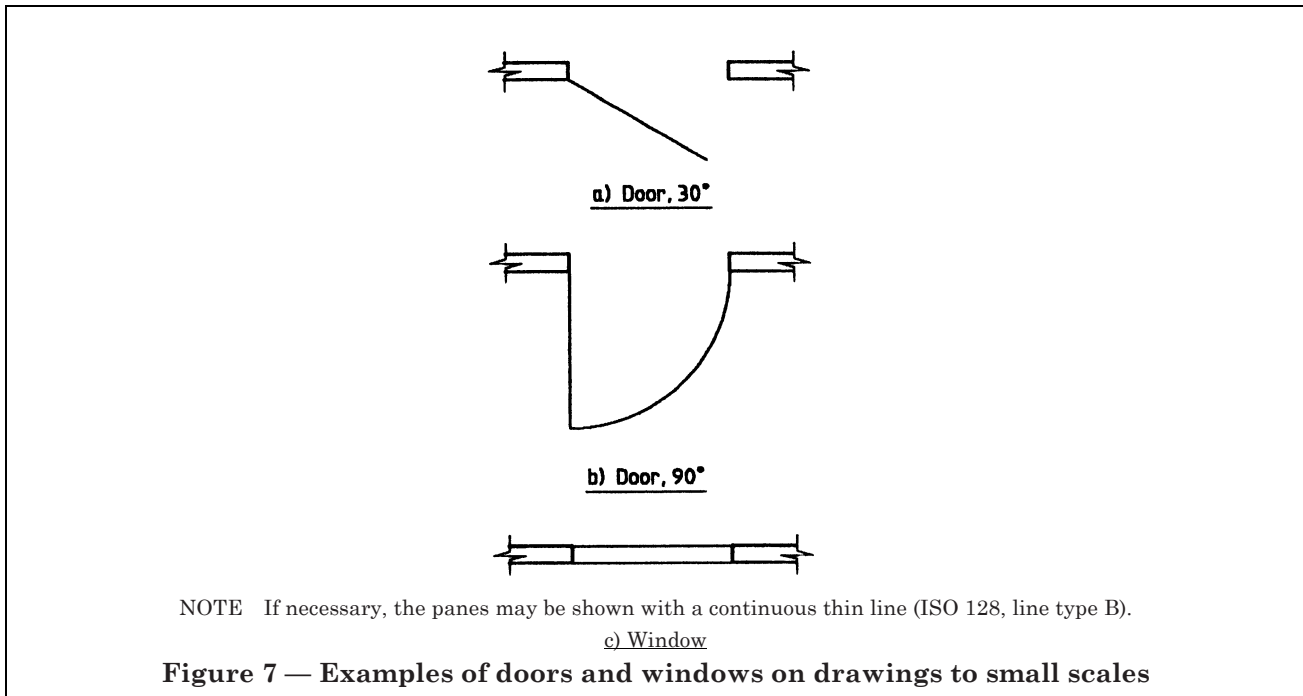
e) Revolving doorf) Overhead doorg) Sliding-folding doors

NOTE If necessary, the panes may be shown with a continuous thin line (ISO 128, line type B).

h) Windows

Figure 6 — Examples of doors and windows on plan drawings to large scales (concluded)

5.4 On drawings to small scales and also on drawings used in early stages of design work, doors and windows may be drawn in a simpler way than indicated in 5.2 and 5.3 (see Figure 7).

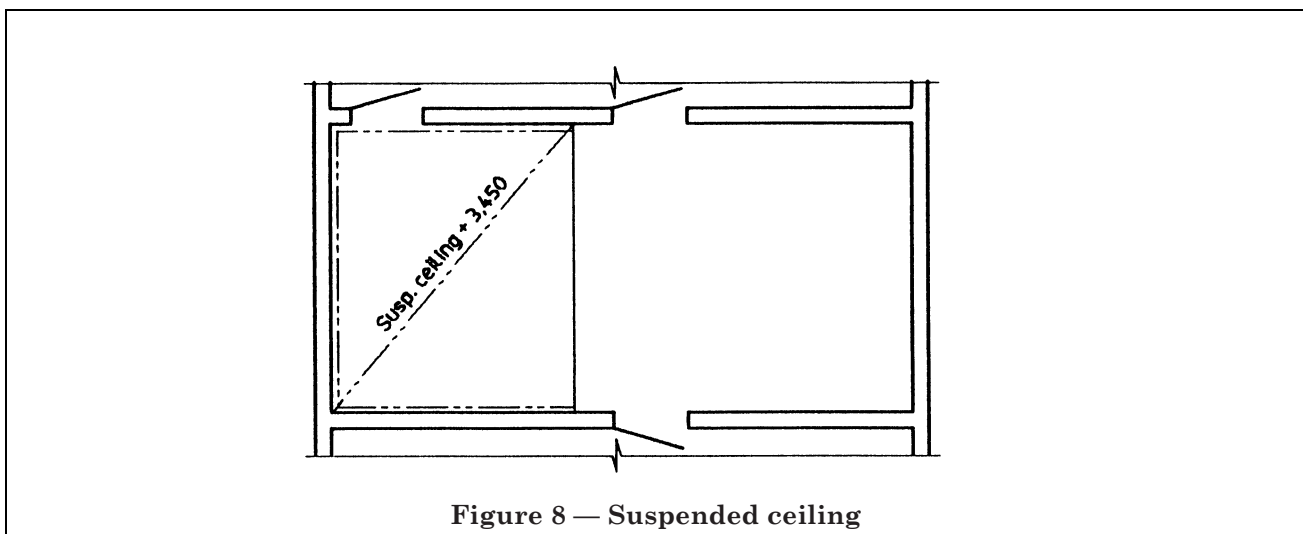


6 Conventional representation

6.1 Suspended ceilings

A suspended ceiling shall be shown on a plan drawing by a diagonal, drawn using a chain thin double-dashed line (ISO 128, line type K). The level of the underside of the suspended ceiling should be indicated by its numerical value or by the room height (see Figure 8).

The outline of a suspended ceiling free from the walls should be drawn with a chain thin double-dashed line (ISO 128, line type K) (see Figure 8).



6.2 Openings, holes and recesses

6.2.1 If necessary, openings and holes in view and in section shall be indicated by two diagonals drawn using a continuous thin line (ISO 128, line type B). The diagonals may be omitted where the meaning of the marking is clear from the context (see Figure 9).

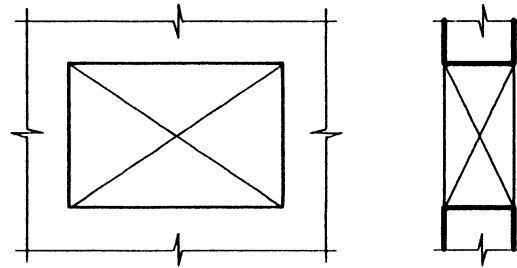


Figure 9 — Openings and holes

6.2.2 If necessary, recesses in view and in section shall be indicated by one diagonal, drawn using a continuous thin line (ISO 128, line type B). The diagonal may be omitted where the meaning of the marking is clear from the context (see Figure 10).

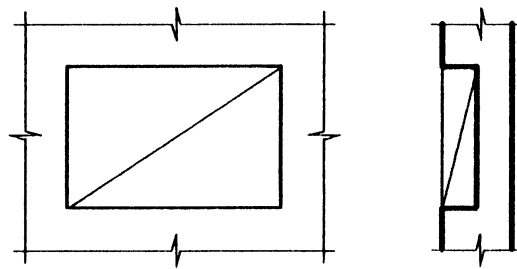


Figure 10 — Recesses

7 Arrow symbols

7.1 Arrow symbols may be used to convey different necessary information.

7.2 Arrow symbols may be drawn using continuous thin, thick or extra-thick lines, depending on the importance of the symbol in its intended usage (see Figure 11).

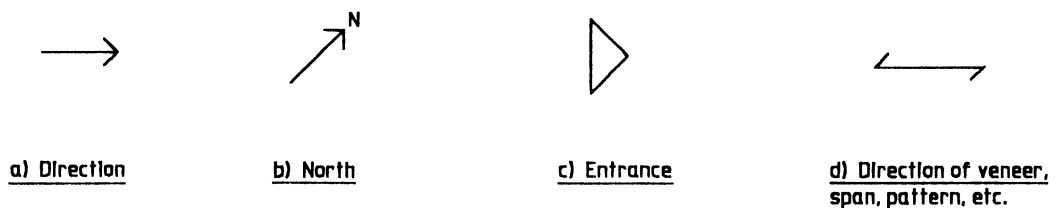


Figure 11 — Examples of arrow symbols

Annex A (informative)

Bibliography

- [1] ISO 4069:1977, *Building and civil engineering drawings — Representation of areas on sections and views — General principles.*
- [2] ISO 4157-1:1980, *Building drawings — Part 1: Designation of buildings and parts of buildings.*
- [3] ISO 5455:1979, *Technical drawings — Scales.*

BSI — British Standards Institution

BSI is the independent national body responsible for preparing British Standards. It presents the UK view on standards in Europe and at the international level. It is incorporated by Royal Charter.

Revisions

British Standards are updated by amendment or revision. Users of British Standards should make sure that they possess the latest amendments or editions.

It is the constant aim of BSI to improve the quality of our products and services. We would be grateful if anyone finding an inaccuracy or ambiguity while using this British Standard would inform the Secretary of the technical committee responsible, the identity of which can be found on the inside front cover.
Tel: 020 8996 9000. Fax: 020 8996 7400.

BSI offers members an individual updating service called PLUS which ensures that subscribers automatically receive the latest editions of standards.

Buying standards

Orders for all BSI, international and foreign standards publications should be addressed to Customer Services. Tel: 020 8996 9001. Fax: 020 8996 7001.

In response to orders for international standards, it is BSI policy to supply the BSI implementation of those that have been published as British Standards, unless otherwise requested.

Information on standards

BSI provides a wide range of information on national, European and international standards through its Library and its Technical Help to Exporters Service. Various BSI electronic information services are also available which give details on all its products and services. Contact the Information Centre.
Tel: 020 8996 7111. Fax: 020 8996 7048.

Subscribing members of BSI are kept up to date with standards developments and receive substantial discounts on the purchase price of standards. For details of these and other benefits contact Membership Administration.
Tel: 020 8996 7002. Fax: 020 8996 7001.

Copyright

Copyright subsists in all BSI publications. BSI also holds the copyright, in the UK, of the publications of the international standardization bodies. Except as permitted under the Copyright, Designs and Patents Act 1988 no extract may be reproduced, stored in a retrieval system or transmitted in any form or by any means – electronic, photocopying, recording or otherwise – without prior written permission from BSI.

This does not preclude the free use, in the course of implementing the standard, of necessary details such as symbols, and size, type or grade designations. If these details are to be used for any other purpose than implementation then the prior written permission of BSI must be obtained.

If permission is granted, the terms may include royalty payments or a licensing agreement. Details and advice can be obtained from the Copyright Manager.
Tel: 020 8996 7070.