

BS EN ISO 4499-4:2016



BSI Standards Publication

# Hardmetals — Metallographic determination of microstructure

Part 4: Characterisation of porosity, carbon defects and eta-phase content

**bsi.**

...making excellence a habit.™

**National foreword**

This British Standard is the UK implementation of EN ISO 4499-4:2016. It supersedes BS EN 24505:1993 which is withdrawn.

The UK participation in its preparation was entrusted to Technical Committee ISE/65, Sintered metal components.

A list of organizations represented on this committee can be obtained on request to its secretary.

This publication does not purport to include all the necessary provisions of a contract. Users are responsible for its correct application.

© The British Standards Institution 2016.  
Published by BSI Standards Limited 2016

ISBN 978 0 580 81470 9

ICS 77.040.99; 77.160

**Compliance with a British Standard cannot confer immunity from legal obligations.**

This British Standard was published under the authority of the Standards Policy and Strategy Committee on 31 March 2016.

**Amendments/corrigenda issued since publication**

Date	Text affected
------	---------------

---

EUROPEAN STANDARD

EN ISO 4499-4

NORME EUROPÉENNE

EUROPÄISCHE NORM

March 2016

ICS 77.040.99; 77.160

Supersedes EN 24505:1993

English Version

## Hardmetals - Metallographic determination of microstructure - Part 4: Characterisation of porosity, carbon defects and eta-phase content (ISO 4499-4:2016)

Métaux-durs - Détermination métallographique de la  
microstructure - Partie 4: Caractérisation de la  
porosité, des défauts carbone et de la teneur en phase  
êta (ISO 4499-4:2016)

Hartmetalle - Metallographische Bestimmung der  
Mikrostruktur - Teil 4: Charakterisierung von  
Porosität, Kohlenstofffehlern und Anteil an Eta-Phase  
(ISO 4499-4:2016)

This European Standard was approved by CEN on 4 February 2016.

CEN members are bound to comply with the CEN/CENELEC Internal Regulations which stipulate the conditions for giving this European Standard the status of a national standard without any alteration. Up-to-date lists and bibliographical references concerning such national standards may be obtained on application to the CEN-CENELEC Management Centre or to any CEN member.

This European Standard exists in three official versions (English, French, German). A version in any other language made by translation under the responsibility of a CEN member into its own language and notified to the CEN-CENELEC Management Centre has the same status as the official versions.

CEN members are the national standards bodies of Austria, Belgium, Bulgaria, Croatia, Cyprus, Czech Republic, Denmark, Estonia, Finland, Former Yugoslav Republic of Macedonia, France, Germany, Greece, Hungary, Iceland, Ireland, Italy, Latvia, Lithuania, Luxembourg, Malta, Netherlands, Norway, Poland, Portugal, Romania, Slovakia, Slovenia, Spain, Sweden, Switzerland, Turkey and United Kingdom.



EUROPEAN COMMITTEE FOR STANDARDIZATION  
COMITÉ EUROPÉEN DE NORMALISATION  
EUROPÄISCHES KOMITEE FÜR NORMUNG

**CEN-CENELEC Management Centre: Avenue Marnix 17, B-1000 Brussels**

## European foreword

This document (EN ISO 4499-4:2016) has been prepared by Technical Committee ISO/TC 119 "Powder metallurgy".

This European Standard shall be given the status of a national standard, either by publication of an identical text or by endorsement, at the latest by September 2016, and conflicting national standards shall be withdrawn at the latest by September 2016.

Attention is drawn to the possibility that some of the elements of this document may be the subject of patent rights. CEN [and/or CENELEC] shall not be held responsible for identifying any or all such patent rights.

This document supersedes EN 24505:1993.

According to the CEN-CENELEC Internal Regulations, the national standards organizations of the following countries are bound to implement this European Standard: Austria, Belgium, Bulgaria, Croatia, Cyprus, Czech Republic, Denmark, Estonia, Finland, Former Yugoslav Republic of Macedonia, France, Germany, Greece, Hungary, Iceland, Ireland, Italy, Latvia, Lithuania, Luxembourg, Malta, Netherlands, Norway, Poland, Portugal, Romania, Slovakia, Slovenia, Spain, Sweden, Switzerland, Turkey and the United Kingdom.

## Endorsement notice

The text of ISO 4499-4:2016 has been approved by CEN as EN ISO 4499-4:2016 without any modification.

# Contents

	Page
<b>Foreword</b> .....	<b>iv</b>
<b>Introduction</b> .....	<b>v</b>
<b>1 Scope</b> .....	<b>1</b>
<b>2 Normative references</b> .....	<b>1</b>
<b>3 Terms and definitions</b> .....	<b>1</b>
<b>4 Symbols and Units</b> .....	<b>1</b>
<b>5 Principle</b> .....	<b>2</b>
<b>6 Apparatus</b> .....	<b>2</b>
<b>7 Calibration of measurement apparatus</b> .....	<b>2</b>
<b>8 Preparation of test samples</b> .....	<b>2</b>
8.1 Methods of preparation.....	2
8.2 Characterisation of porosity and carbon (graphite) defects.....	3
8.3 Characterisation of eta-phase.....	3
<b>9 Procedure</b> .....	<b>3</b>
9.1 General.....	3
9.2 Determination of porosity.....	3
9.3 Determination of carbon defects.....	4
9.4 Determination of the $\eta$ -phase (eta-phase).....	7
<b>10 Uncertainty of measurement</b> .....	<b>9</b>
<b>11 Test report</b> .....	<b>9</b>
<b>Bibliography</b> .....	<b>10</b>

## Foreword

ISO (the International Organization for Standardization) is a worldwide federation of national standards bodies (ISO member bodies). The work of preparing International Standards is normally carried out through ISO technical committees. Each member body interested in a subject for which a technical committee has been established has the right to be represented on that committee. International organizations, governmental and non-governmental, in liaison with ISO, also take part in the work. ISO collaborates closely with the International Electrotechnical Commission (IEC) on all matters of electrotechnical standardization.

The procedures used to develop this document and those intended for its further maintenance are described in the ISO/IEC Directives, Part 1. In particular the different approval criteria needed for the different types of ISO documents should be noted. This document was drafted in accordance with the editorial rules of the ISO/IEC Directives, Part 2 (see [www.iso.org/directives](http://www.iso.org/directives)).

Attention is drawn to the possibility that some of the elements of this document may be the subject of patent rights. ISO shall not be held responsible for identifying any or all such patent rights. Details of any patent rights identified during the development of the document will be in the Introduction and/or on the ISO list of patent declarations received (see [www.iso.org/patents](http://www.iso.org/patents)).

Any trade name used in this document is information given for the convenience of users and does not constitute an endorsement.

For an explanation on the meaning of ISO specific terms and expressions related to conformity assessment, as well as information about ISO's adherence to the WTO principles in the Technical Barriers to Trade (TBT) see the following URL: [Foreword - Supplementary information](#).

The committee responsible for this document is ISO/TC 119, *Powder metallurgy*, Subcommittee SC 4, *Sampling and testing methods for hardmetals*.

This first edition of ISO 4499-4 cancels and replaces ISO 4505:1978, which has been technically revised.

ISO 4499 consists of the following parts, under the general title *Hardmetals — Metallographic determination of microstructure*:

- *Part 1: Photomicrographs and description*
- *Part 2: Measurement of WC grain size*
- *Part 3: Measurement of microstructural features in Ti (C,N) and WC/cubic carbide based hardmetals*
- *Part 4: Characterisation of porosity, carbon defects and eta-phase content*

## Introduction

In standard WC/Co hardmetals, the chemistry, magnetic properties and density are generally controlled so that only two phases WC and Co are present.<sup>[1][2][3]</sup> The Co phase is an alloy and contains some W and C in solid solution. The WC phase is stoichiometric. If the composition is either high or low in total carbon content, then it is possible to see a third phase in the structure. For high C, this is graphite; for low C, it is eta phase ( $\eta$ ); typically, an  $M_6C$  or  $M_{12}C$  carbide where M is  $(Co_xW_y)$ . This part of ISO 4499 is concerned with the detection and measurement of these microstructural features together with the measurement of porosity levels. Porosity is important since these materials are manufactured by a powder metallurgical route and although the technique of liquid phase sintering is used to consolidate the multiphase structure, low levels of porosity can arise in some instances and affect properties such as density and strength.





# Hardmetals — Metallographic determination of microstructure —

## Part 4: Characterisation of porosity, carbon defects and eta-phase content

### 1 Scope

This part of ISO 4499 specifies methods for the metallographic determination of the presence, type, and distribution of porosity, uncombined carbon and eta-phase in hardmetals.

### 2 Normative references

The following documents, in whole or in part, are normatively referenced in this document and are indispensable for its application. For dated references, only the edition cited applies. For undated references, the latest edition of the referenced document (including any amendments) applies.

ISO 4499-2:2008, *Hardmetals — Metallographic determination of microstructure — Part 2: Measurement of WC grain size*

### 3 Terms and definitions

For the purposes of this document, the following terms and definitions apply.

#### 3.1

##### carbon defects

macroscopic precipitates of carbon (graphite) which can be in the form of large angular rosettes or small flakes

#### 3.2

##### eta-phase

##### $\eta$ -phase

cubic carbide based on M<sub>6</sub>C or M<sub>12</sub>C structure where M is a mixture of Co and W usually in equal proportions; and which can be present as large (up to 100  $\mu\text{m}$  diameter) rosettes or small micrometre-sized particles

### 4 Symbols and Units

ECD Equivalent Circle Diameter of a specified phase, in micrometres ( $\mu\text{m}$ )

$L$  total line length in a specified phase, in millimetres (mm)

$l_i$  measured length of individual intercepts in a specified phase, in micrometres ( $\mu\text{m}$ )

$\sum l_i$  sum of the measured length of each individual intercept

$l_x$  arithmetic mean linear intercept in phase  $x$ , in micrometres ( $\mu\text{m}$ )

$N$	number of eta-phase particles intercepted
$m$	magnification
$m_{\max}$	maximum magnification
$m_{\min}$	minimum magnification

## 5 Principle

This part of ISO 4499 handles the following key issues:

- description of methods for sample preparation;
- description of how to identify and measure the relevant feature.

In some cases, the approach adopted in ISO 4499-2 and ISO 4499-3 can be useful, whereby the intercept method is used on microphotographs of the structure for relevant quantification of feature size, such as eta-phase or graphite rosettes.

## 6 Apparatus

**6.1 Metallographic optical microscope**, or other suitable equipment permitting observations and measurements on a screen up to the required magnification.

**6.2 Scanning electron microscope (SEM)**, permitting observations and measurements of features too small to be resolved with an optical microscope.

**6.3 Equipment for preparation of test-piece sections.**

## 7 Calibration of measurement apparatus

For reliable quantitative measurements, images shall be calibrated against a stage micrometre or scale traceable to a National Reference Standard. The most commonly used stage micrometres for SEMs are the SIRA grids. These are ruled lines which form a grid and are available with 19,7 lines/mm and 2 160 lines/mm. However, these shall also be calibrated and certified as being traceable to a National Reference Standard.

For images obtained from an optical microscope, an image of the calibration graticule shall also be obtained using the same objectives (and internal magnification step changers or zoom position) and illuminating technique. The microscope shall be set up for Köhler illumination to obtain the maximum resolution, see Reference [4].

For images obtained from a scanning electron microscope, images of the graticule should be obtained under the same conditions (accelerating kV, working distance, illumination aperture) as those used for the hardmetal.

## 8 Preparation of test samples

### 8.1 Methods of preparation

There are several methods for the preparation of hardmetal surfaces for metallographic examination. For example, a detailed description is given in ISO 4499-1. Firstly, careful coarse grinding is carried out to remove sufficient material to ensure that the true structure is revealed. After grinding with fine diamond grit wheels, polishing is effected by using diamond paste or diamond powders of progressively finer grain size down to 1 µm on rigidly supported laps of, for example, thin plastic, thin felt or paper.

## 8.2 Characterisation of porosity and carbon (graphite) defects

For porosity and carbon defects, the test-piece section shall be prepared as for metallographic examination and the surface to be examined shall be free from grinding and polishing marks. Care shall be taken to avoid tearing out of particles, which can lead to a misleading evaluation of porosity.

## 8.3 Characterisation of eta-phase

Etching is necessary to reveal eta-phase particles (see 9.4). Eta-phase is metal carbide (usually  $M_6C$  or  $M_{12}C$ , where M is a combination of Co and W, for example,  $Co_3W_3C$ ), that forms when the overall carbon content of the hardmetal is relatively low. Generally, it can grow in one of two morphologies, either as large rosettes or as small particles of a similar size to the other hard phases (WC or cubic carbides) present in the hardmetal (see 9.4). The presence of the eta-phase is usually determined after light etching in 10 % Murakami's reagent for a few seconds with immediate water flush following etching (see ISO 4499-1), which works well for identifying large eta-phase rosettes. When the eta-phase is present as smaller particles (see Figure 6), it is recommended to use a 5 % Murakami's solution for 20 min followed by washing the sample with water. In both cases, the surface should be dried carefully with acetone or alcohol without wiping.

# 9 Procedure

## 9.1 General

If the porosity or uncombined carbon is not uniform over the area of the test piece section being examined, the locations on the section to which the evaluation refers shall be identified, for example, as top, bottom, edge, rim (case), core, etc.

It should be noted that the figures given in this Clause are only representing approximately  $\frac{1}{7}$  of the field of view in the microscope.

## 9.2 Determination of porosity

Pore size is defined as the maximum dimension of the pore in the section. Special reference shall be made to the presence of cracks or slits.

**9.2.1** Pores up to 10  $\mu\text{m}$  shall be assessed by scanning the surface of the test-piece section at a magnification of either  $\times 100$  or  $\times 200$ . An area fully representative of the test-piece section shall be examined and compared with the range of photomicrographs shown in Figure 1 or Figure 2, according to the chosen magnification. The porosity level shall be reported by reference to the appropriate photomicrograph and designated as A02, A04, A06 or A08. If the level of A-type pores is less than 50 % of that shown in Figure 1 (A02) or Figure 2 (A02), it shall be designated as A00.

**9.2.2** Pores within the range 10  $\mu\text{m}$  to 25  $\mu\text{m}$  shall be assessed by scanning the surface of the test-piece section at a magnification of  $\times 100$ . An area fully representative of the test-piece section shall be examined and shall be compared with the range of photomicrographs shown in Figure 3. The porosity level shall be reported by reference to the appropriate photomicrograph and designated as B02, B04, B06 or B08.

If the number of B-pores appears to be less than or equal to that represented by B02, the number of B-pores in the representative area ( $\geq 0,25 \text{ cm}^2$ ) shall be counted. This number shall be divided by the area examined to obtain the number of B-pores/ $\text{cm}^2$ .

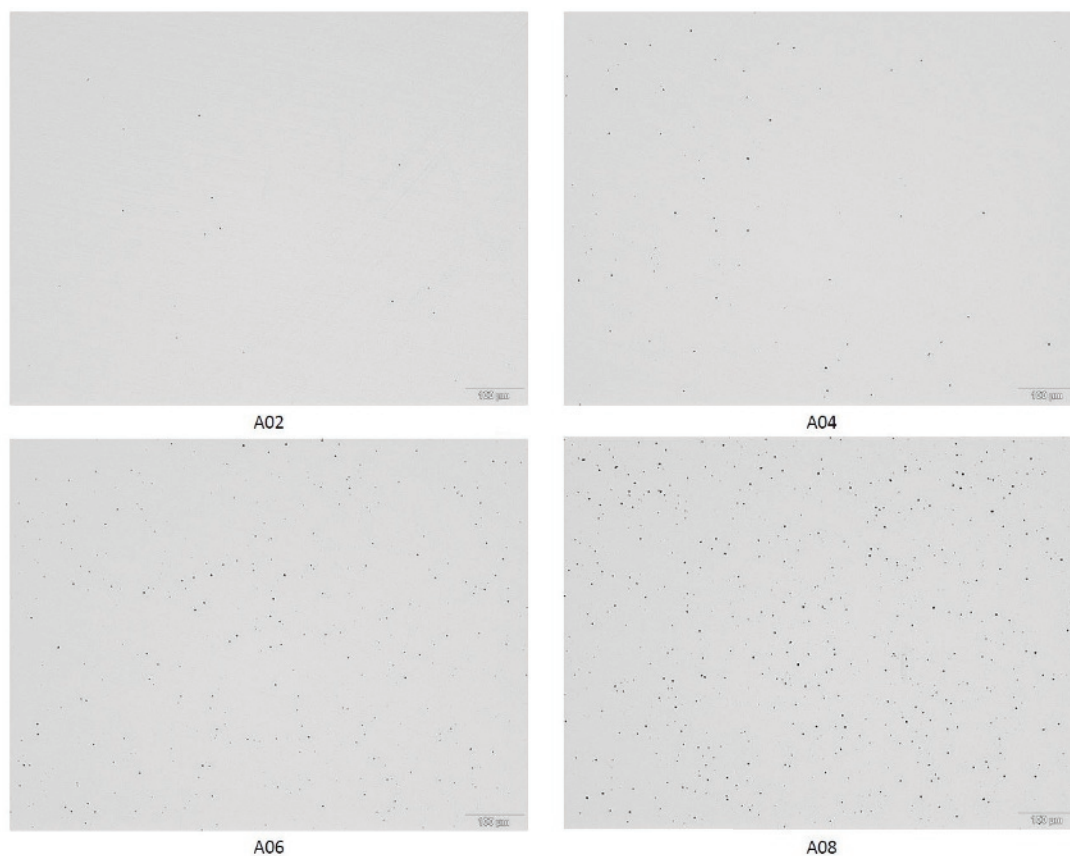
If this number is less than 70 pores/ $\text{cm}^2$ , it shall be designated as B00 - #, where # is the number of B-pores/ $\text{cm}^2$  so obtained. If the number is greater than or equal to 70 pores/ $\text{cm}^2$ , it shall be designated as B02.

**9.2.3** If it is necessary to inspect for pores larger than 25  $\mu\text{m}$ , they shall be examined at a suitable magnification up to  $\times 100$  and shall be counted and reported as the number of pores per unit area. The size ranges shall be chosen as follows: 25  $\mu\text{m}$  to 75  $\mu\text{m}$ , 75  $\mu\text{m}$  to 125  $\mu\text{m}$ , over 125  $\mu\text{m}$ .

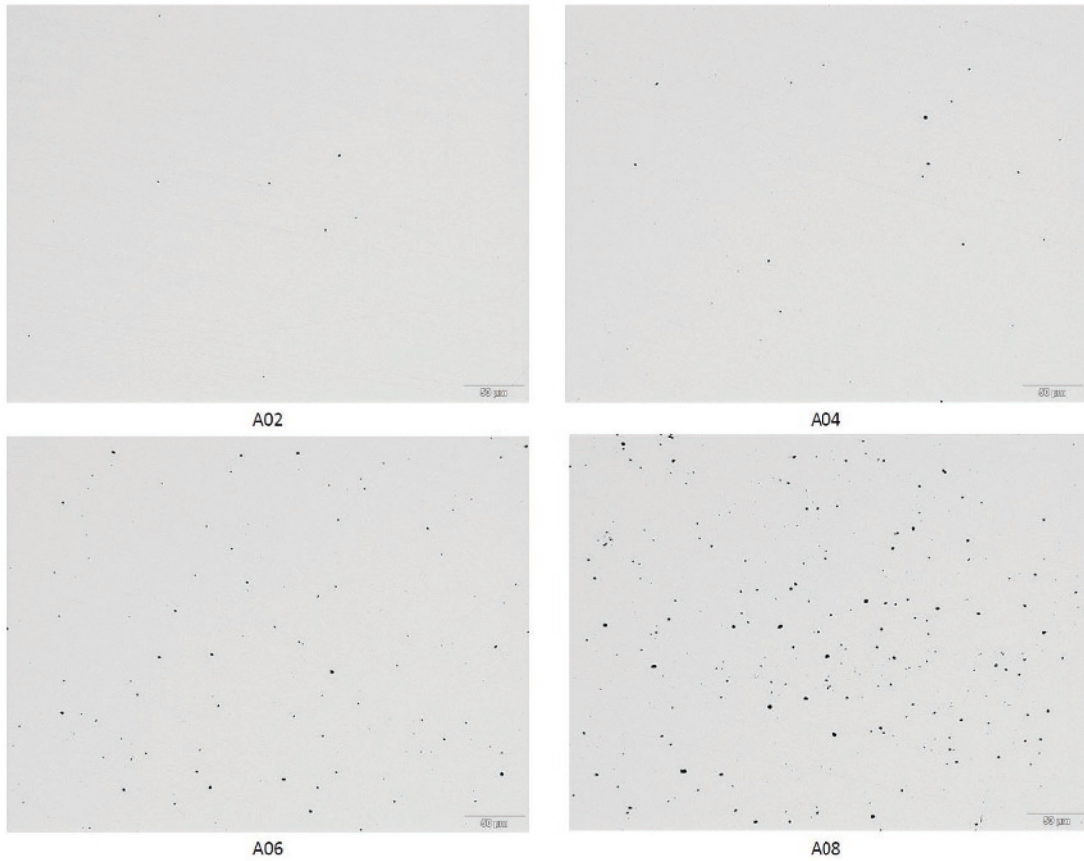
### 9.3 Determination of carbon defects

**9.3.1** Uncombined carbon shall be assessed by scanning the surface of the test-piece section at a magnification of  $\times 100$ . An area fully representative of the test-piece section shall be examined and shall be compared with the range of photomicrographs shown in [Figure 4](#). The level of uncombined carbon shall be reported by reference to the appropriate photomicrographs and designated as C02, C04, C06 or C08.

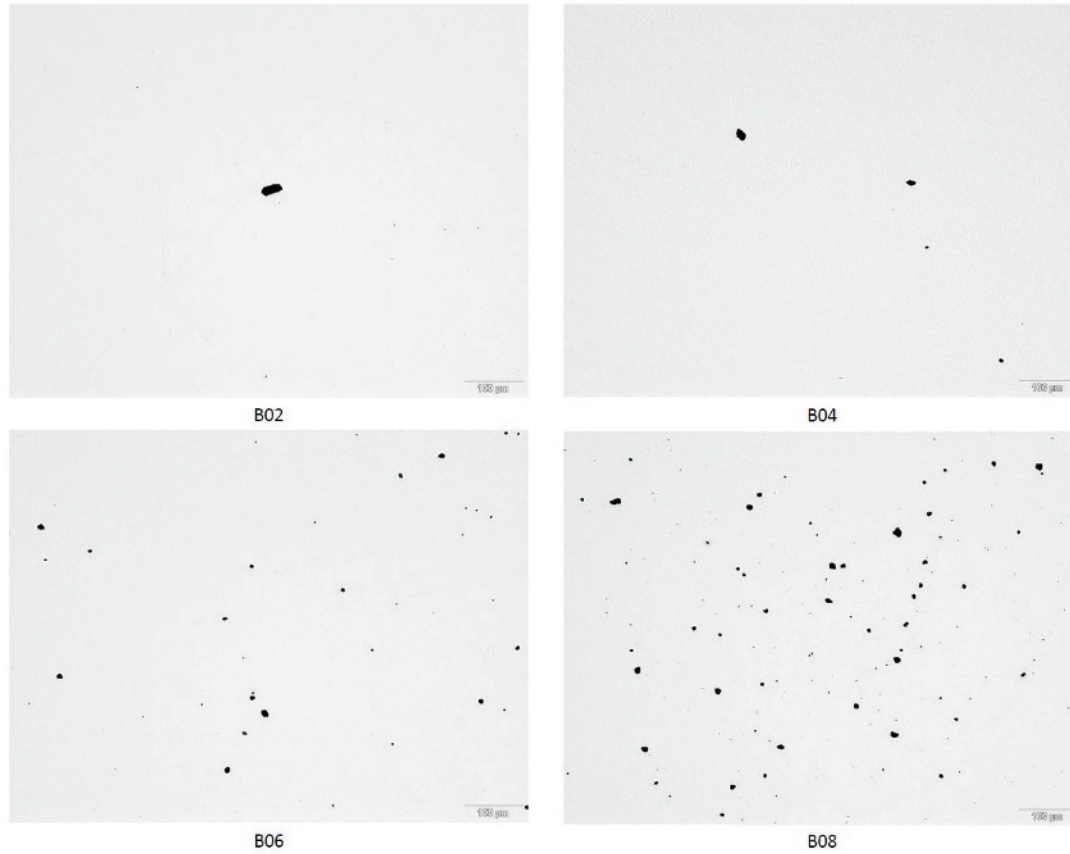
**9.3.2** If A-type or B-type porosity or C-type uncombined carbon is not detected, it shall be reported as A00, B00 or C00, as applicable.



**Figure 1 — A-type porosity classes at  $\times 100$  magnification (optical)**



**Figure 2 — A-type porosity classes at  $\times 200$  magnification (optical)**



**Figure 3 — B-type porosity classes at  $\times 100$  magnification (optical); A-pores ( $< 10 \mu\text{m}$ ) are included**



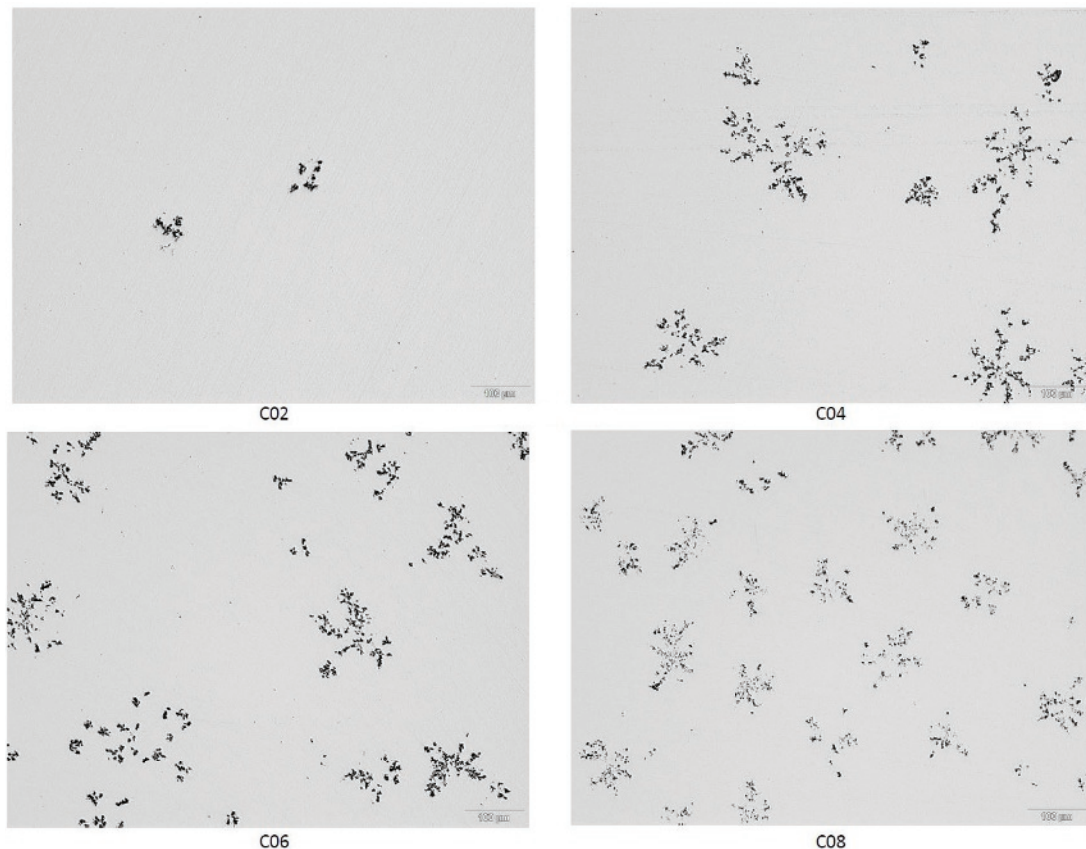
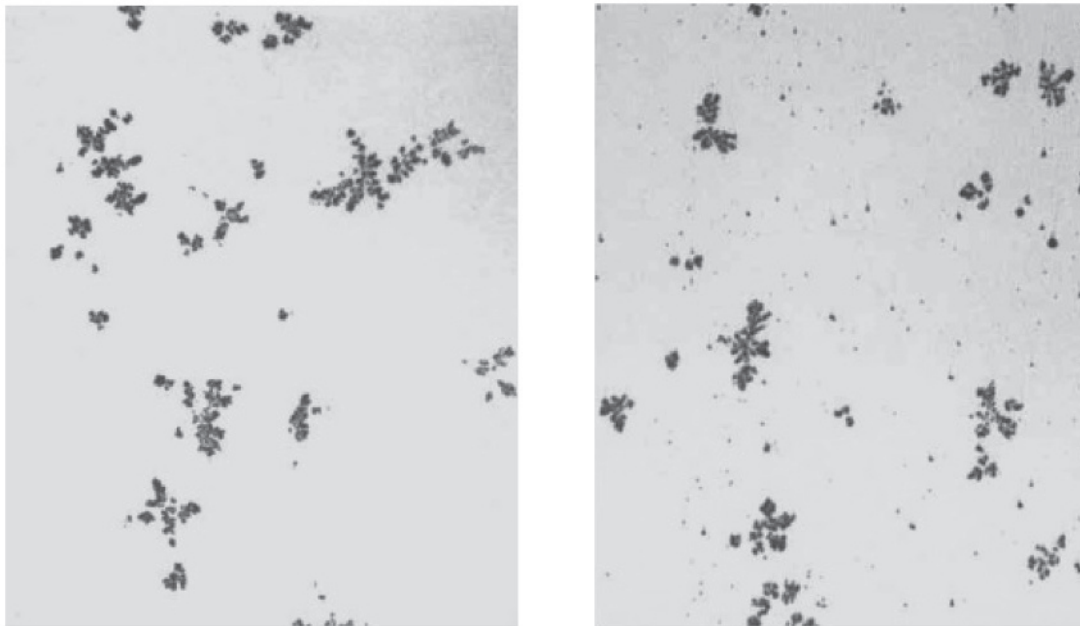


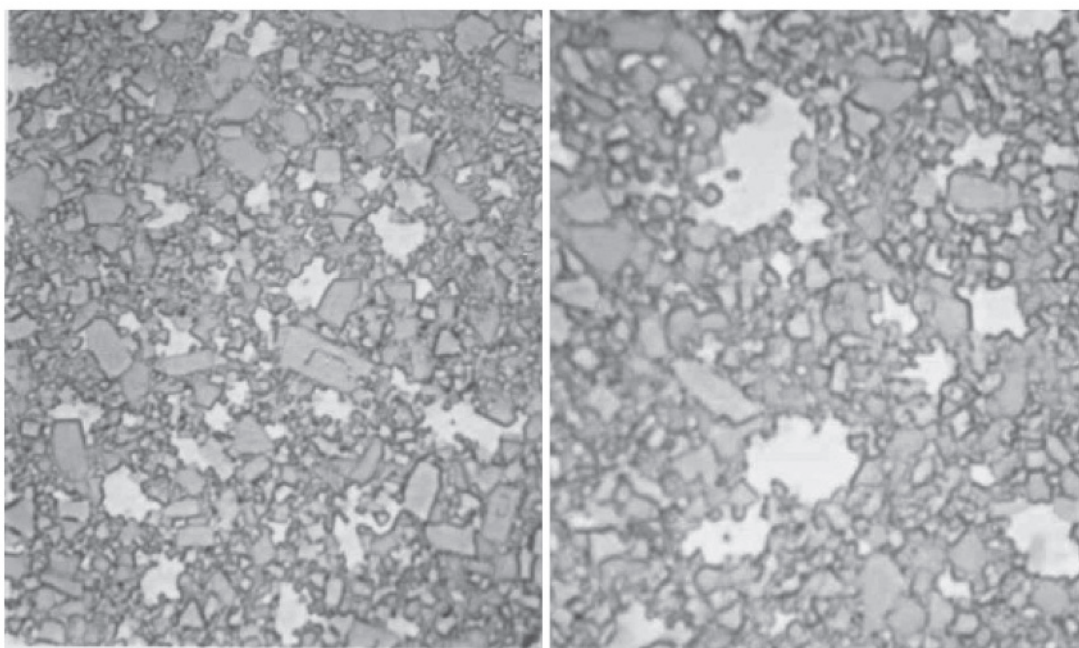
Figure 4 — Carbon porosity at  $\times 100$  magnification (optical)

#### 9.4 Determination of the $\eta$ -phase (eta-phase)

The eta-phase is a metal carbide (usually  $M_6C$  or  $M_{12}C$ , where M is a combination of Co and W, for example,  $Co_3W_3C$ ), that forms when the overall carbon content of the hardmetal is relatively low. Generally, it can grow in one of two morphologies, either as large rosettes (see [Figure 5](#)) or as small particles of a similar size to the other hard phases (WC or cubic carbides) present in the hardmetal (see [Figure 6](#)). Phase of the eta-type appear orange to brown when observed by optical microscopy after light etching in 10 % Murakami's reagent. Examine the whole surface at low magnification to reveal large rosettes (see [Figure 5](#)) and then at progressively higher magnifications to observe smaller particles or grains. When the eta-phase is present as smaller particles, it is recommended to use a 5 % Murakami's solution and the eta-phase is revealed as small white particles that contrast with the grey WC grains (see [Figure 6](#)). A typical micrograph showing these smaller eta-phase particles is given in [Figure 6](#). The commonly used etching methods are listed in [8.3](#). However, smaller particles cannot be identified easily using this method. SEM techniques such as atomic number contrast or Orientation Imaging Microscopy (OIM) using Electron Back Scatter Diffraction techniques (EBSD) are more appropriate.



**Figure 5 — Large eta-phase rosettes (about 100  $\mu\text{m}$  in diameter)**



**Figure 6 — Small eta-phase particles (light grey, about 5  $\mu\text{m}$  in diameter)**

The presence of the eta-phase is usually determined after light etching in 10 % Murakami's reagent for a few seconds with an immediate water flush following etching. The surface should be dried carefully with acetone or alcohol without wiping. Phases of the eta-type appear orange to brown when observed by optical microscopy. Examine the whole surface at low magnification to reveal large rosettes (see [Figure 5](#)) and then at progressively higher magnifications to observe smaller particles or grains. When the eta-phase is present as smaller particles (see [Figure 6](#)), it is recommended to use a 5 % Murakami's solution for 20 min. The eta-phase is revealed as small white particles that contrast with the grey WC grains. A typical micrograph showing these smaller eta-phase particles is given in [Figure 6](#).



## 10 Uncertainty of measurement

Systematic and random measurement errors can have several sources as specified in ISO 4499-2:2008, 7.3.1. Systematic and random measurement errors shall be avoided wherever possible.

## 11 Test report

The test report shall include the following information:

- a) reference to this part of ISO 4499, i.e. ISO 4499-4;
- b) all details necessary for identification of the test sample;
- c) results obtained;
- d) etchant and etching time;
- e) traceability, calibration graticule number and calibration certificate;
- f) imaging technique: optical or SEM techniques;
- g) magnification used: one or more;
- h) number of fields of view measured;
- i) for eta-phase characterisation, total number of intercepts;
- j) arithmetic mean linear intercept size for eta-phase characterisation in micrometres ( $\mu\text{m}$ );
- k) all operations not specified in this part of ISO 4499, or regarded as optional;
- l) details of any occurrence that might have affected the result.

The test report should additionally include the following information:

- identification number of the image or photo micrographs if archived;
- information about the source of the material and the customer requesting the measurement to be made;
- numerical aperture of objective for optical microscopy;
- acceleration voltage, working distance and illuminating aperture for SEM;
- comment on measurement uncertainty.

## Bibliography

- [1] ROEBUCK B., & BENNETT E.G. NPL MATC(MN)03, March 2001. *Ultrafine Grained Hardmetals Grain Size and Distribution*
- [2] BENNETT E.G. L. LEWIS, R. MORRELL and B. ROEBUCK, *Microstructural Measurements on Ceramics and Hardmetals*, NPL Good Practice Guide, No. 21, Revised, November 2007.
- [3] SCHWARZKOPF P., & KIEFFER R. *Cemented Carbides*. MacMillen, New York, 1960
- [4] BRADBURY S. *An Introduction to the Optical Microscope*, Royal Microscopical Society, Oxford Science Publications, p. 20
- [5] ASTM B 657, *Guide for Metallographic Identification of Microstructure in Cemented Carbides*
- [6] ASTM B 665, *Standard Guide for Metallographic Sample Preparation of Cemented Tungsten Carbides*
- [7] ASTM E 112, *Standard Test Methods for Determining Average Grain Size*
- [8] ISO 4499-1, *Hardmetals — Metallographic determination of microstructure — Part 1: Photomicrographs and description*
- [9] ISO 4499-3, *Hardmetals — Metallographic determination of microstructure — Part 3: Measurement of microstructural features in Ti (C, N) and WC/cubic carbide based hardmetals*







# British Standards Institution (BSI)

BSI is the national body responsible for preparing British Standards and other standards-related publications, information and services.

BSI is incorporated by Royal Charter. British Standards and other standardization products are published by BSI Standards Limited.

## About us

We bring together business, industry, government, consumers, innovators and others to shape their combined experience and expertise into standards-based solutions.

The knowledge embodied in our standards has been carefully assembled in a dependable format and refined through our open consultation process. Organizations of all sizes and across all sectors choose standards to help them achieve their goals.

## Information on standards

We can provide you with the knowledge that your organization needs to succeed. Find out more about British Standards by visiting our website at [bsigroup.com/standards](http://bsigroup.com/standards) or contacting our Customer Services team or Knowledge Centre.

## Buying standards

You can buy and download PDF versions of BSI publications, including British and adopted European and international standards, through our website at [bsigroup.com/shop](http://bsigroup.com/shop), where hard copies can also be purchased.

If you need international and foreign standards from other Standards Development Organizations, hard copies can be ordered from our Customer Services team.

## Subscriptions

Our range of subscription services are designed to make using standards easier for you. For further information on our subscription products go to [bsigroup.com/subscriptions](http://bsigroup.com/subscriptions).

With **British Standards Online (BSOL)** you'll have instant access to over 55,000 British and adopted European and international standards from your desktop. It's available 24/7 and is refreshed daily so you'll always be up to date.

You can keep in touch with standards developments and receive substantial discounts on the purchase price of standards, both in single copy and subscription format, by becoming a **BSI Subscribing Member**.

**PLUS** is an updating service exclusive to BSI Subscribing Members. You will automatically receive the latest hard copy of your standards when they're revised or replaced.

To find out more about becoming a BSI Subscribing Member and the benefits of membership, please visit [bsigroup.com/shop](http://bsigroup.com/shop).

With a **Multi-User Network Licence (MUNL)** you are able to host standards publications on your intranet. Licences can cover as few or as many users as you wish. With updates supplied as soon as they're available, you can be sure your documentation is current. For further information, email [bsmusales@bsigroup.com](mailto:bsmusales@bsigroup.com).

## Revisions

Our British Standards and other publications are updated by amendment or revision.

We continually improve the quality of our products and services to benefit your business. If you find an inaccuracy or ambiguity within a British Standard or other BSI publication please inform the Knowledge Centre.

## Copyright

All the data, software and documentation set out in all British Standards and other BSI publications are the property of and copyrighted by BSI, or some person or entity that owns copyright in the information used (such as the international standardization bodies) and has formally licensed such information to BSI for commercial publication and use. Except as permitted under the Copyright, Designs and Patents Act 1988 no extract may be reproduced, stored in a retrieval system or transmitted in any form or by any means – electronic, photocopying, recording or otherwise – without prior written permission from BSI. Details and advice can be obtained from the Copyright & Licensing Department.

## Useful Contacts:

### Customer Services

**Tel:** +44 845 086 9001

**Email (orders):** [orders@bsigroup.com](mailto:orders@bsigroup.com)

**Email (enquiries):** [cservices@bsigroup.com](mailto:cservices@bsigroup.com)

### Subscriptions

**Tel:** +44 845 086 9001

**Email:** [subscriptions@bsigroup.com](mailto:subscriptions@bsigroup.com)

### Knowledge Centre

**Tel:** +44 20 8996 7004

**Email:** [knowledgecentre@bsigroup.com](mailto:knowledgecentre@bsigroup.com)

### Copyright & Licensing

**Tel:** +44 20 8996 7070

**Email:** [copyright@bsigroup.com](mailto:copyright@bsigroup.com)

## BSI Group Headquarters

389 Chiswick High Road London W4 4AL UK

