

BS EN ISO 3376:2011



BSI Standards Publication

**Leather — Physical and  
mechanical tests —  
Determination of tensile  
strength and percentage  
extension (ISO 3376:2011)**

**bsi.**

...making excellence a habit.™

**National foreword**

This British Standard is the UK implementation of EN ISO 3376:2011. It supersedes BS EN ISO 3376:2002 which is withdrawn.

The UK participation in its preparation was entrusted to Technical Committee TCI/69, Footwear, leather and coated fabrics.

A list of organizations represented on this committee can be obtained on request to its secretary.

This publication does not purport to include all the necessary provisions of a contract. Users are responsible for its correct application.

© The British Standards Institution 2012

ISBN 978 0 580 67827 1

ICS 59.140.30

**Compliance with a British Standard cannot confer immunity from legal obligations.**

This British Standard was published under the authority of the Standards Policy and Strategy Committee on 31 January 2012.

**Amendments issued since publication**

Date	Text affected
------	---------------

---

English Version

## Leather - Physical and mechanical tests - Determination of tensile strength and percentage extension (ISO 3376:2011)

Cuir - Essais physiques et mécaniques - Détermination de la résistance à la traction et du pourcentage d'allongement (ISO 3376:2011)

Leder - Physikalische und mechanische Prüfungen - Bestimmung der Zugfestigkeit und der prozentualen Dehnung (ISO 3376:2011)

This European Standard was approved by CEN on 14 December 2011.

CEN members are bound to comply with the CEN/CENELEC Internal Regulations which stipulate the conditions for giving this European Standard the status of a national standard without any alteration. Up-to-date lists and bibliographical references concerning such national standards may be obtained on application to the CEN-CENELEC Management Centre or to any CEN member.

This European Standard exists in three official versions (English, French, German). A version in any other language made by translation under the responsibility of a CEN member into its own language and notified to the CEN-CENELEC Management Centre has the same status as the official versions.

CEN members are the national standards bodies of Austria, Belgium, Bulgaria, Croatia, Cyprus, Czech Republic, Denmark, Estonia, Finland, France, Germany, Greece, Hungary, Iceland, Ireland, Italy, Latvia, Lithuania, Luxembourg, Malta, Netherlands, Norway, Poland, Portugal, Romania, Slovakia, Slovenia, Spain, Sweden, Switzerland and United Kingdom.



EUROPEAN COMMITTEE FOR STANDARDIZATION  
COMITÉ EUROPÉEN DE NORMALISATION  
EUROPÄISCHES KOMITEE FÜR NORMUNG

Management Centre: Avenue Marnix 17, B-1000 Brussels

## Foreword

This document (EN ISO 3376:2011) has been prepared by Technical Committee CEN/TC 289 "Leather", the secretariat of which is held by UNI, in collaboration with the International Union of Leather Technologists and Chemists Societies.

This European Standard shall be given the status of a national standard, either by publication of an identical text or by endorsement, at the latest by June 2012, and conflicting national standards shall be withdrawn at the latest by June 2012.

Attention is drawn to the possibility that some of the elements of this document may be the subject of patent rights. CEN [and/or CENELEC] shall not be held responsible for identifying any or all such patent rights.

This document supersedes EN ISO 3376:2002.

According to the CEN/CENELEC Internal Regulations, the national standards organizations of the following countries are bound to implement this European Standard: Austria, Belgium, Bulgaria, Croatia, Cyprus, Czech Republic, Denmark, Estonia, Finland, France, Germany, Greece, Hungary, Iceland, Ireland, Italy, Latvia, Lithuania, Luxembourg, Malta, Netherlands, Norway, Poland, Portugal, Romania, Slovakia, Slovenia, Spain, Sweden, Switzerland and the United Kingdom.

## Foreword

ISO (the International Organization for Standardization) is a worldwide federation of national standards bodies (ISO member bodies). The work of preparing International Standards is normally carried out through ISO technical committees. Each member body interested in a subject for which a technical committee has been established has the right to be represented on that committee. International organizations, governmental and non-governmental, in liaison with ISO, also take part in the work. ISO collaborates closely with the International Electrotechnical Commission (IEC) on all matters of electrotechnical standardization.

International Standards are drafted in accordance with the rules given in the ISO/IEC Directives, Part 2.

The main task of technical committees is to prepare International Standards. Draft International Standards adopted by the technical committees are circulated to the member bodies for voting. Publication as an International Standard requires approval by at least 75 % of the member bodies casting a vote.

Attention is drawn to the possibility that some of the elements of this document may be the subject of patent rights. ISO shall not be held responsible for identifying any or all such patent rights.

ISO 3376 was prepared by the European Committee for Standardization (CEN) Technical Committee CEN/TC 289, *Leather*, in collaboration with the Physical Test Commission of the International Union of Leather Technologists and Chemists Societies (IUP Commission, IULTCS), in accordance with the Agreement on technical cooperation between ISO and CEN (Vienna Agreement).

IULTCS, originally formed in 1897, is a world-wide organization of professional leather societies to further the advancement of leather science and technology. IULTCS has three Commissions, which are responsible for establishing international methods for the sampling and testing of leather. ISO recognizes IULTCS as an international standardizing body for the preparation of test methods for leather.

This third edition cancels and replaces the second edition (ISO 3376:2002), which has been technically revised in 4.4, 6.2.1, 7.1 and 8.



# Leather — Physical and mechanical tests — Determination of tensile strength and percentage extension

## 1 Scope

This International Standard specifies a method for determining the tensile strength, elongation at a specified load and elongation at break of leather. It is applicable to all types of leather.

## 2 Normative references

The following referenced documents are indispensable for the application of this document. For dated references, only the edition cited applies. For undated references, the latest edition of the referenced document (including any amendments) applies.

ISO 2418, *Leather — Chemical, physical and mechanical and fastness tests — Sampling location*

ISO 2419, *Leather — Physical and mechanical tests — Sample preparation and conditioning*

ISO 2589, *Leather — Physical and mechanical tests — Determination of thickness*

ISO 7500-1:2004, *Metallic materials — Verification of static uniaxial testing machines — Part 1: Tension/compression testing machines — Verification and calibration of the force-measuring system*

## 3 Principle

A test piece is extended at a specified rate until the forces reach a predetermined value or until the test piece breaks.

## 4 Apparatus

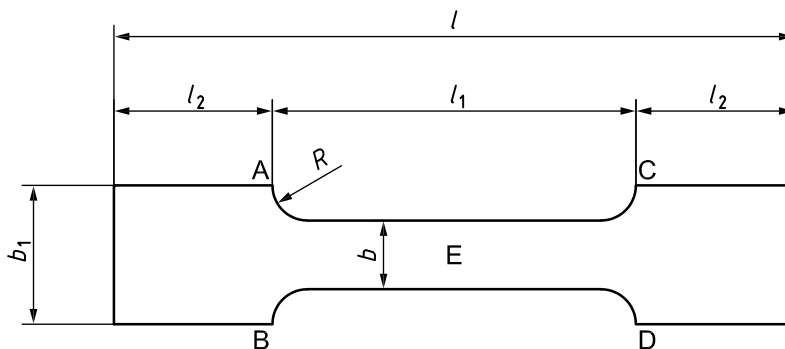
### 4.1 Tensile testing machine, with:

- a force range appropriate to the specimen under test;
- a means of recording the force to an accuracy of at least 2 % as specified by Class 2 of ISO 7500-1;
- a uniform speed of separation of the jaws of 100 mm/min  $\pm$  20 mm/min;
- a means of recording the force, e.g. as an extension curve;
- jaws, minimum length 45 mm in the direction of the applied load, designed to apply constant clamping by mechanical or pneumatic means. The texture and design of the inside faces of the jaws shall be such that, at the maximum load attained in the test, the specimen does not slip in either jaw by an amount exceeding 1 % of the original jaw separation.

**4.2 A means of determining the extension of the test piece**, either by monitoring the separation of the jaws or by sensors which monitor the separation of two fixed points on the test piece.

**4.3 Thickness gauge**, as specified in ISO 2589.

**4.4 Press knives**, as specified in ISO 2419, capable of cutting a test piece as shown in Figure 1 to the dimensions given in Table 1.



**Figure 1 — Shape of test piece**

**Table 1 — Dimensions of test pieces**

Dimensions in millimetres

Designation	$l$	$l_1$	$l_2$	$b$	$b_1$	$R$
Standard	110	50	30	10	20	5
Large	190	100	45	20	40	10

**4.5 Vernier callipers**, reading to 0,1 mm.

## 5 Sampling and sample preparation

**5.1** Sample in accordance with ISO 2418.

**5.2** From the sample, cut six test pieces in accordance with ISO 2419 by applying a press knife (4.4) to the grain surface, three test pieces with the longer sides parallel to the backbone and three test pieces with the longer sides perpendicular to the backbone. If previous testing has shown that there is slippage of the test piece in the jaws, use the large press knife (4.4).

If there is a requirement for more than two hides or skins to be tested in one batch, then only one test piece in each direction need be taken from each hide or skin, provided that the overall total is not less than three test pieces in each direction.

**5.3** Condition the test pieces in accordance with ISO 2419.



## 6 Procedure

### 6.1 Determination of dimensions

**6.1.1** Using vernier callipers (4.5), measure the width of each test piece to the nearest 0,1 mm at three positions on the grain side and three on the flesh side. In each group of three measurements, make one at the mid-point E (as shown in Figure 1) and the other two at positions approximately midway between the mid-point E and the lines AB and CD. Take the arithmetic mean of the six measurements as the width of the test piece,  $w$ . For soft (“flexible”) leather, the width shall be taken as the width of the press knife.

**6.1.2** Measure the thickness of each test piece in accordance with ISO 2589. Make the measurements at three positions, namely the mid-point E and at positions approximately midway between the mid-point E and the lines AB and CD. Take the arithmetic mean of the three measurements as the thickness of the test piece,  $t$ .

### 6.2 Determination of tensile strength

**6.2.1** Set the jaws of the tensile testing apparatus (4.1) 50 mm  $\pm$  1 mm apart if using the standard test piece or 100 mm apart if using the large test piece. Clamp the test piece in the jaws so that the edges of the jaws lie along the lines AB and CD. When the test piece is clamped, ensure its grain surface lies in one plane. The length axis shall be parallel to the traction direction.

**6.2.2** Run the machine until the test piece breaks and record the highest force exerted as the breaking force,  $F$ .

### 6.3 Determination of the percentage elongation caused by a specified load

**6.3.1** Clamp the test piece between the jaws of the apparatus, as described in 6.2.1. Measure the distance between the jaws at least to the nearest 0,5 mm and record this distance,  $L_0$ , as the initial length of the test piece for the purpose of the test.

**6.3.2** Start the test. Unless the apparatus automatically draws a force/extension curve with the necessary accuracy (see 4.2), follow the distance between the pair of jaws or the sensors as the force increases.

**6.3.3** Note the distance, in millimetres, between the pair of jaws or sensors at the instant when the force first reaches the specified value. This distance represents the length of the test piece at this force,  $L_1$ . Do not stop the apparatus if results from the procedures described in 6.2 or 6.4 are also required.

### 6.4 Determination of the percentage elongation at break

**6.4.1** Carry out the steps given in 6.3.1.

**6.4.2** Run the tensile test machine until the test piece breaks.

**6.4.3** Record the distance between the jaws or sensors at the instant when rupture of the test piece occurs.

This distance represents the length of the test piece at break,  $L_2$ .

### 6.5 Slippage

If there is slippage of the test piece in either jaw when tested according to 6.2, 6.3 or 6.4, and the slippage is greater than 1 % of the initial jaw separation, reject the result and repeat the determination with a new test piece cut using the large press knife (4.4).

## 7 Expression of results

### 7.1 Tensile strength

The tensile strength,  $T_n$ , in MPa (or newtons per square millimetre, if required) shall be calculated using the equation:

$$T_n = \frac{F}{\bar{w} \cdot \bar{t}}$$

where

$F$  is the highest force recorded, in newtons;

$\bar{w}$  is the mean width of the test piece, in millimetres;

$\bar{t}$  is the mean thickness of the test piece, in millimetres.

NOTE The relationship between MPa and N/mm<sup>2</sup> is the following: 1 N/mm<sup>2</sup> = 1 MPa.

### 7.2 Percentage elongation caused by a specified load

The percentage elongation caused by a specified load,  $E_1$ , shall be calculated using the equation:

$$E_1 = \frac{L_1 - L_0}{L_0} \times 100$$

where

$L_1$  is the separation of the jaws or sensors at the specified load;

$L_0$  is the initial separation of the jaws or sensors.

### 7.3 Percentage elongation at break

The percentage elongation at break,  $E_b$ , shall be calculated using the equation:

$$E_b = \frac{L_2 - L_0}{L_0} \times 100$$

where

$L_2$  is the separation of the jaws or sensors at break;

$L_0$  is the initial separation of the jaws or sensors.

## 8 Test report

The test report shall include the following:

- a) a reference to this International Standard, i.e. ISO 3376:2011;
- b) the mean tensile strength, in MPa (or newtons per square millimetre), to the nearest 0,1 MPa, for the test pieces with the longer edge cut parallel to the backbone;
- c) the mean tensile strength, in MPa (or newtons per square millimetre), to the nearest 0,1 MPa, for the test pieces with the longer edge cut perpendicular to the backbone;
- d) the mean percentage elongation at break to the nearest 1 %, for the test pieces with the longer edge cut parallel to the backbone;
- e) the mean percentage elongation at break to the nearest 1 %, for the test pieces with the longer edge cut perpendicular to the backbone;
- f) the mean percentage elongation at a specified load to the nearest 1 %, for the test pieces with the longer edge cut parallel to the backbone; if required;
- g) the mean percentage elongation at a specified load to the nearest 1 %, for the test pieces with the longer edge cut perpendicular to the backbone, if required;
- h) the thickness of the sample, in millimetres, in accordance with ISO 2589;
- i) any deviations from the method specified in this International Standard;
- j) full details for identification of the sample and any deviation from ISO 2418 with respect to sampling;
- k) if required by the customer or in specifications, it is permitted to report the results described in 8 l), 8 m) and 8 n) instead of 8 b) to 8 g);
- l) the average tensile strength, in MPa (or newtons per square millimetre), to the nearest 0,1 MPa [i.e. the arithmetic mean of b) and c)];
- m) the average percentage elongation at break to the nearest 1 % [i.e. the arithmetic mean of d) and e)];
- n) the average percentage elongation at a specified load to the nearest 1 % [i.e. the arithmetic mean of f) and g)], if required;
- o) the standard atmosphere used for conditioning and testing, as given in ISO 2419.





# British Standards Institution (BSI)

BSI is the national body responsible for preparing British Standards and other standards-related publications, information and services.

BSI is incorporated by Royal Charter. British Standards and other standardization products are published by BSI Standards Limited.

## About us

We bring together business, industry, government, consumers, innovators and others to shape their combined experience and expertise into standards-based solutions.

The knowledge embodied in our standards has been carefully assembled in a dependable format and refined through our open consultation process. Organizations of all sizes and across all sectors choose standards to help them achieve their goals.

## Information on standards

We can provide you with the knowledge that your organization needs to succeed. Find out more about British Standards by visiting our website at [bsigroup.com/standards](http://bsigroup.com/standards) or contacting our Customer Services team or Knowledge Centre.

## Buying standards

You can buy and download PDF versions of BSI publications, including British and adopted European and international standards, through our website at [bsigroup.com/shop](http://bsigroup.com/shop), where hard copies can also be purchased.

If you need international and foreign standards from other Standards Development Organizations, hard copies can be ordered from our Customer Services team.

## Subscriptions

Our range of subscription services are designed to make using standards easier for you. For further information on our subscription products go to [bsigroup.com/subscriptions](http://bsigroup.com/subscriptions).

With **British Standards Online (BSOL)** you'll have instant access to over 55,000 British and adopted European and international standards from your desktop. It's available 24/7 and is refreshed daily so you'll always be up to date.

You can keep in touch with standards developments and receive substantial discounts on the purchase price of standards, both in single copy and subscription format, by becoming a **BSI Subscribing Member**.

**PLUS** is an updating service exclusive to BSI Subscribing Members. You will automatically receive the latest hard copy of your standards when they're revised or replaced.

To find out more about becoming a BSI Subscribing Member and the benefits of membership, please visit [bsigroup.com/shop](http://bsigroup.com/shop).

With a **Multi-User Network Licence (MUNL)** you are able to host standards publications on your intranet. Licences can cover as few or as many users as you wish. With updates supplied as soon as they're available, you can be sure your documentation is current. For further information, email [bsmusales@bsigroup.com](mailto:bsmusales@bsigroup.com).

## BSI Group Headquarters

389 Chiswick High Road London W4 4AL UK

## Revisions

Our British Standards and other publications are updated by amendment or revision.

We continually improve the quality of our products and services to benefit your business. If you find an inaccuracy or ambiguity within a British Standard or other BSI publication please inform the Knowledge Centre.

## Copyright

All the data, software and documentation set out in all British Standards and other BSI publications are the property of and copyrighted by BSI, or some person or entity that owns copyright in the information used (such as the international standardization bodies) and has formally licensed such information to BSI for commercial publication and use. Except as permitted under the Copyright, Designs and Patents Act 1988 no extract may be reproduced, stored in a retrieval system or transmitted in any form or by any means – electronic, photocopying, recording or otherwise – without prior written permission from BSI. Details and advice can be obtained from the Copyright & Licensing Department.

## Useful Contacts:

### Customer Services

**Tel:** +44 845 086 9001

**Email (orders):** [orders@bsigroup.com](mailto:orders@bsigroup.com)

**Email (enquiries):** [cservices@bsigroup.com](mailto:cservices@bsigroup.com)

### Subscriptions

**Tel:** +44 845 086 9001

**Email:** [subscriptions@bsigroup.com](mailto:subscriptions@bsigroup.com)

### Knowledge Centre

**Tel:** +44 20 8996 7004

**Email:** [knowledgecentre@bsigroup.com](mailto:knowledgecentre@bsigroup.com)

### Copyright & Licensing

**Tel:** +44 20 8996 7070

**Email:** [copyright@bsigroup.com](mailto:copyright@bsigroup.com)



...making excellence a habit.™