

BS EN ISO 643:2012



BSI Standards Publication

Steels — Micrographic determination of the apparent grain size

bsi.

...making excellence a habit.™

National foreword

This British Standard is the UK implementation of EN ISO 643:2012. It supersedes BS EN ISO 643:2003 which is withdrawn.

The UK participation in its preparation was entrusted to Technical Committee ISE/101/7, Methods of physical and metallographic testing.

A list of organizations represented on this committee can be obtained on request to its secretary.

This publication does not purport to include all the necessary provisions of a contract. Users are responsible for its correct application.

© The British Standards Institution 2013.
Published by BSI Standards Limited 2013

ISBN 978 0 580 78671 6

ICS 77.040.99

Compliance with a British Standard cannot confer immunity from legal obligations.

This British Standard was published under the authority of the Standards Policy and Strategy Committee on 31 January 2013.

Amendments issued since publication

Date	Text affected
------	---------------

English Version

**Steels - Micrographic determination of the apparent grain size
(ISO 643:2012)**

Aciers - Détermination micrographique de la grosseur de grain apparente (ISO 643:2012)

Stahl - Mikrophotographische Bestimmung der scheinbaren Korngröße (ISO 643:2012)

This European Standard was approved by CEN on 10 December 2012.

CEN members are bound to comply with the CEN/CENELEC Internal Regulations which stipulate the conditions for giving this European Standard the status of a national standard without any alteration. Up-to-date lists and bibliographical references concerning such national standards may be obtained on application to the CEN-CENELEC Management Centre or to any CEN member.

This European Standard exists in three official versions (English, French, German). A version in any other language made by translation under the responsibility of a CEN member into its own language and notified to the CEN-CENELEC Management Centre has the same status as the official versions.

CEN members are the national standards bodies of Austria, Belgium, Bulgaria, Croatia, Cyprus, Czech Republic, Denmark, Estonia, Finland, Former Yugoslav Republic of Macedonia, France, Germany, Greece, Hungary, Iceland, Ireland, Italy, Latvia, Lithuania, Luxembourg, Malta, Netherlands, Norway, Poland, Portugal, Romania, Slovakia, Slovenia, Spain, Sweden, Switzerland, Turkey and United Kingdom.



EUROPEAN COMMITTEE FOR STANDARDIZATION
COMITÉ EUROPÉEN DE NORMALISATION
EUROPÄISCHES KOMITEE FÜR NORMUNG

Management Centre: Avenue Marnix 17, B-1000 Brussels

Foreword

This document (EN ISO 643:2012) has been prepared by Technical Committee ISO/TC 17 "Steel" in collaboration with Technical Committee ECISS/TC 101 "Test methods for steel (other than chemical analysis)" the secretariat of which is held by AFNOR.

This European Standard shall be given the status of a national standard, either by publication of an identical text or by endorsement, at the latest by June 2013, and conflicting national standards shall be withdrawn at the latest by June 2013.

Attention is drawn to the possibility that some of the elements of this document may be the subject of patent rights. CEN [and/or CENELEC] shall not be held responsible for identifying any or all such patent rights.

This document supersedes EN ISO 643:2003.

According to the CEN/CENELEC Internal Regulations, the national standards organisations of the following countries are bound to implement this European Standard: Austria, Belgium, Bulgaria, Croatia, Cyprus, Czech Republic, Denmark, Estonia, Finland, Former Yugoslav Republic of Macedonia, France, Germany, Greece, Hungary, Iceland, Ireland, Italy, Latvia, Lithuania, Luxembourg, Malta, Netherlands, Norway, Poland, Portugal, Romania, Slovakia, Slovenia, Spain, Sweden, Switzerland, Turkey and the United Kingdom.

Endorsement notice

The text of ISO 643:2012 has been approved by CEN as a EN ISO 643:2012 without any modification.

Contents

Page

Foreword	iv
1 Scope	1
2 Normative references	1
3 Terms and definitions	1
4 Symbols and abbreviated terms	2
5 Principle.....	2
6 Selection and preparation of the specimen.....	4
6.1 Test location	4
6.2 Revealing ferritic grain boundaries	5
6.3 Revealing austenitic and prior-austenitic grain boundaries.....	5
7 Characterization of grain size	9
7.1 Characterization by an index	9
7.2 Characterization by the intercept method	11
8 Test report.....	14
Annex A (informative) Summary of methods for revealing ferritic, austenitic or prior-austenitic grain boundaries in steels	15
Annex B (normative) Determination of grain size — Standard charts taken from ASTM E112.....	16
Annex C (normative) Evaluation method	31

Foreword

ISO (the International Organization for Standardization) is a worldwide federation of national standards bodies (ISO member bodies). The work of preparing International Standards is normally carried out through ISO technical committees. Each member body interested in a subject for which a technical committee has been established has the right to be represented on that committee. International organizations, governmental and non-governmental, in liaison with ISO, also take part in the work. ISO collaborates closely with the International Electrotechnical Commission (IEC) on all matters of electrotechnical standardization.

International Standards are drafted in accordance with the rules given in the ISO/IEC Directives, Part 2.

The main task of technical committees is to prepare International Standards. Draft International Standards adopted by the technical committees are circulated to the member bodies for voting. Publication as an International Standard requires approval by at least 75 % of the member bodies casting a vote.

Attention is drawn to the possibility that some of the elements of this document may be the subject of patent rights. ISO shall not be held responsible for identifying any or all such patent rights.

ISO 643 was prepared by Technical Committee ISO/TC 17, *Steel*, Subcommittee SC 7, *Methods of testing (other than mechanical tests and chemical analysis)*.

This third edition cancels and replaces the second edition (ISO 643:2003), of which it constitutes a minor revision. A note was added after the first paragraph of 7.1.2.

Steels — Micrographic determination of the apparent grain size

1 Scope

This International Standard specifies a micrographic method of determining apparent ferritic or austenitic grain size in steels. It describes the methods of revealing grain boundaries and of estimating the mean grain size of specimens with unimodal size distribution. Although grains are three-dimensional in shape, the metallographic sectioning plane can cut through a grain at any point from a grain corner, to the maximum diameter of the grain, thus producing a range of apparent grain sizes on the two-dimensional plane, even in a sample with a perfectly consistent grain size.

2 Normative references

The following referenced documents are indispensable for the application of this document. For dated references, only the edition cited applies. For undated references, the latest edition of the referenced document (including any amendments) applies.

ISO 3785, *Steel — Designation of test piece axes*

ISO 14250, *Steel — Metallographic characterization of duplex grain size and distributions*

ASTM E112, *Standard Test Methods for Determining Average Grain Size*

3 Terms and definitions

For the purposes of this document, the following terms and definitions apply.

3.1

grain

closed polygonal shape with more or less curved sides, which can be revealed on a flat cross-section through the sample, polished and prepared for micrographic examination

A distinction is made between:

3.1.1

austenitic grain

crystal with a face-centered cubic crystal structure which may, or may not, contain annealing twins

3.1.2

ferritic grain

crystal with a body-centered cubic crystal structure which never contains annealing twins¹⁾

1) Ferritic grain size is generally estimated for non-alloy steels with a carbon content of 0,25 % or less. If pearlite islands of identical dimensions to those of the ferrite grains are present, the islands are then counted as ferrite grains.

3.2 index

positive, zero or possibly negative number G which is derived from the mean number m of grains counted in an area of 1 mm^2 of the section of the specimen

NOTE By definition, $G = 1$ where $m = 16$; the other indices are obtained by the formula

$$m = 8 \times 2^G$$

3.3 intercept

\bar{N}
number of grains intercepted by a test line, either straight or curved

See Figure 1.

NOTE Straight test lines will normally end within a grain. These end segments are counted as 1/2 an interception. \bar{N} is the average of a number of counts of the number of grains intercepted by the test line applied randomly at various locations. \bar{N} is divided by the true line length, L_T , usually measured in millimetres, in order to obtain the number of grains intercepted per unit length, \bar{N}_L .

3.4 intersection

\bar{P}
number of intersection points between grain boundaries and a test line, either straight or curved

See Figure 1.

NOTE \bar{P} is the average of a number of counts of the number of grain boundaries intersected by the test line applied randomly at various locations. \bar{P} is divided by the true line length, L_T , usually measured in millimetres, in order to obtain the number of grain boundary intersections per unit length, \bar{P}_L .

4 Symbols and abbreviated terms

The symbols used are given in Table 1.

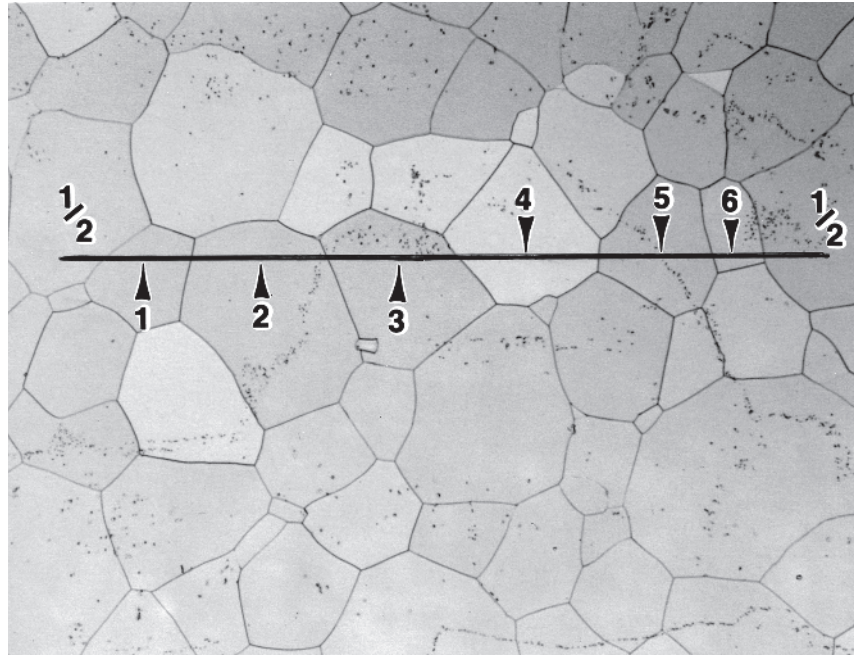
5 Principle

The grain size is revealed by micrographic examination of a polished section of the specimen prepared by an appropriate method for the type of steel and for the information sought.

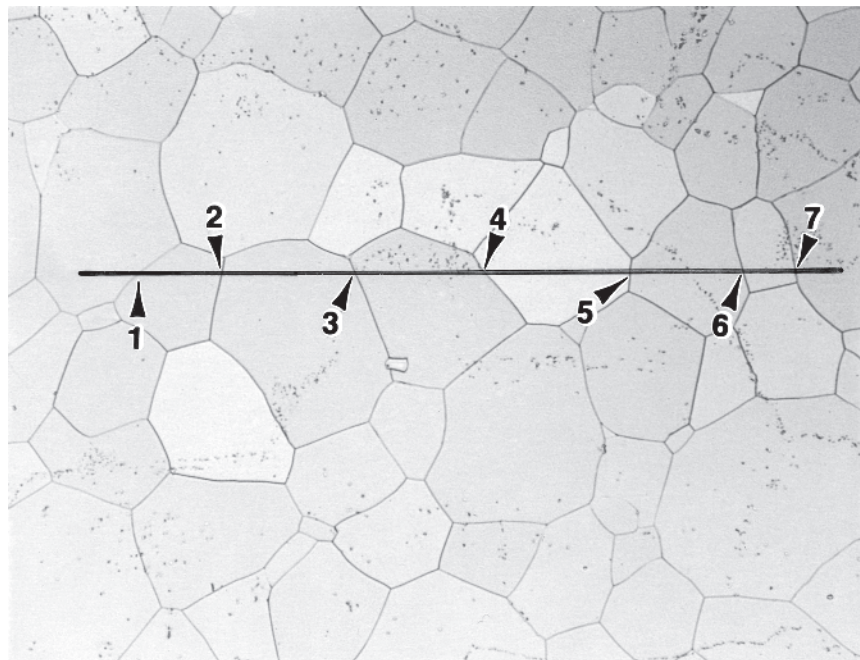
NOTE If the order or the International Standard defining the product does not stipulate the method of revealing the grain, the choice of this method is left to the manufacturer.

This average size is characterized either

- a) by an index obtained
 - usually by comparison with standard charts for the measurement of grain size;
 - or by counting to determine the average number of grains per unit area;
- b) or by the mean value of the intercepted segment.



Interception, N , counts for a straight line on a single-phase grain structure where the arrows point to 6 intercepts and two line segments ending within grain ($2 \times 1/2 = 1 N$) and $N = 7$



Intersection, P , counts for a straight test line placed over a single-phase grain structure where the arrows point to 7 intersection points and $P = 7$

Figure 1 — Examples of intersection, P , and interception, N

Table 1 — Symbols

Symbols	Definition	Value
\bar{a}	Mean area of grain in square millimetres	$\bar{a} = \frac{1}{m}$
A_F	Apparent area of the test figure in square millimetres	—
\bar{d}	Mean grain diameter in millimetres	$\bar{d} = \frac{1}{\sqrt{m}}$
D	Diameter of the circle on the ground glass screen of the microscope or on a photomicrograph enclosing the image of the reference surface of the test piece	79,8 mm (area = 5 000 mm ²)
g	Linear magnification (to be noted as a reference) of the microscopic image	In principle 100
G	Equivalent index of grain size	—
K	Conversion factor from linear magnification $\times g$ to linear magnification $\times 100$	$K = \frac{g}{100}$
l	Mean lineal intercept length, generally expressed in millimetres	$l = 1/\bar{N}_L = 1/\bar{P}_L$
L_T	True length of the test line divided by the magnification, in millimetres	—
m	Number of grains per square millimetre of test piece surface in the area examined	$m = 2 n_{100}$ (magnification $\times 100$) $m = 2 K^2 n_g$ (magnification $\times g$)
M	Number of the closest standard chart picture where g is not 100.	—
n_g	Total equivalent number of grains examined on the image of diameter D (with a magnification $\times g$)	—
n_1	Number of grains completely inside the circle of diameter D	—
n_2	Number of grains intersected by the circle of diameter D	—
n_{100}	Total equivalent number of grains examined on the image of diameter D (with magnification $\times 100$)	$n_{100} = n_1 + \frac{n_2}{2}$
\bar{N}	Mean number of grains intercepted per unit length L	—
\bar{N}_L	Mean number of grains intercepted per unit length of the line	$\bar{N}_L = \bar{N} / L_T$
N_x	Number of intercepts per millimetre in the longitudinal direction ^a	—
N_y	Number of intercepts per millimetre in the transverse direction ^a	—
N_z	Number of intercepts per millimetre in the perpendicular direction ^a	—
\bar{P}	Mean number of counts of the number of grain boundaries intersected by the test line applied randomly at various locations	—
\bar{P}_L	Mean number of grain boundary intersections per unit length of test line	$\bar{P}_L = \bar{P} / L_T$

^a The method for designating the direction conforms to ISO 3785.

6 Selection and preparation of the specimen

6.1 Test location

If the order, or the International Standard defining the product, does not specify the number of specimens and the point at which they are to be taken from the product, these are left to the manufacturer, although it has

been shown that precision of grain size determination increases the higher the number of specimens assessed. Therefore, it is recommended that two or more sections be assessed. Care shall be taken to ensure that the specimens are representative of the bulk of the product (i.e., avoid heavily deformed material such as that found at the extreme end of certain products or where shearing has been used to remove the specimen etc.). The specimens shall be polished in accordance with the usual methods.

Unless otherwise stated by the product standard or by agreement with the customer, the polished face of the specimen shall be longitudinal, i.e., parallel to the principal axis of deformation in wrought products. Measurements of the grain size on a transverse plane will be biased if the grain shape is not equiaxial.

6.2 Revealing ferritic grain boundaries

The ferritic grains shall be revealed by etching with nital (ethanolic 2 % to 3 % nitric acid solution), or with an appropriate reagent.

6.3 Revealing austenitic and prior-austenitic grain boundaries

6.3.1 General

In the case of steels having a single-phase or two-phase austenitic structure (delta ferrite grains in an austenitic matrix) at ambient temperature, the grain shall be revealed by an etching solution. For single phase austenitic stainless steels, the most commonly used chemical etchants are glyceresia, Kalling's reagent (No. 2) and Marble's reagent. The best electrolytic etch for single or two-phase stainless steels is aqueous 60 % nitric acid at 1,4 V d.c. for 60 s to 120 s, as it reveals the grain boundaries but not the twin boundaries. Aqueous 10 % oxalic acid, 6 V d.c., up to 60 s, is commonly used but is less effective than electrolytic 60 % HNO₃.

For other steels, one or other of the methods specified below shall be used depending on the information required.

- "Bechet-Beaujard" method by etching with aqueous saturated picric acid solution (see 6.3.2);
- "Kohn" method by controlled oxidation (see 6.3.3);
- "McQuaid-Ehn" method by carburization (see 6.3.4);
- grain boundary sensitization method (see 6.3.7);
- other methods specially agreed upon when ordering.

NOTE The first three methods are for prior-austenitic grain boundaries while the others are for austenitic Mn or austenitic stainless, see Annex A.

If comparative tests are carried out for the different methods, it is essential to use the same heat treatment conditions. Results may vary considerably from one method to the other.

6.3.2 "Bechet-Beaujard" method by etching with aqueous saturated picric acid solution

6.3.2.1 Field of application

This method reveals austenitic grains formed during heat treatment of the specimen. It is applicable to specimens which have a martensitic or bainitic structure. For this etch to work, there shall be at least 0,005 % P.

6.3.2.2 Preparation

The Bechet-Beaujard etchant is normally used on a heat-treated steel specimen. Normally, no subsequent heat treatment is necessary if the specimen has a martensitic or bainitic structure. If this is not the case, heat treatment is necessary.

If the conditions for treating the test piece are not provided for by the International Standard defining the product and there is no specification to the contrary, the following conditions shall be applied in the case of heat-treated structural carbon steels and low-alloy steels:

- 1,5 h at (850 ± 10) °C for steels whose carbon content is greater than 0,35 %;
- 1,5 h at (880 ± 10) °C for steels whose carbon content is less than or equal to 0,35 %.

After this treatment, the test piece shall be quenched into water or oil.

6.3.2.3 Polishing and etching

A flat specimen surface shall be polished for micrographic examination. It shall be etched for an adequate period of time by means of an aqueous solution saturated with picric acid together with at least 0,5 % sodium alkylsulfonate or another appropriate wetting agent.

NOTE The period of etching may vary from a few minutes to more than one hour. Heating of the solution to 60 °C may improve the etching action and reduce etching time.

Several successive etching and polishing operations are sometimes necessary to ensure a sufficient contrast between the grain boundaries and the general base of the specimen. In the case of through-hardened steel, tempering may be carried out before selecting the specimen.

WARNING: When heating solutions containing picric acid, caution shall be taken to avoid the solution boiling dry as picric acid can become explosive.

6.3.2.4 Result

The prior-austenite grain boundaries shall be immediately apparent on microscopic examination.

6.3.3 “Kohn” method by controlled oxidation

6.3.3.1 Field of application

This method shows up the austenitic grain pattern formed by preferential oxidation of the boundaries during austenization at the temperature of a given heat treatment.

6.3.3.2 Preparation

One surface of the specimen shall be polished. The rest of its surface shall not show any traces of oxide. The specimen shall be placed in a laboratory furnace in which either a vacuum of 1 Pa is attained or an inert gas is circulated (e.g. purified argon). Heat treat the specimen in accordance with the austenitizing procedure specified by the customer, or as defined by the International Standard governing the product.

At the end of this specified heating period, air shall be introduced into the furnace for a period of 10 s to 15 s.

The specimen shall then be water-quenched. The specimen can usually be directly examined using a microscope.

NOTE 1 The oxidation method can be done without the inert atmosphere.

NOTE 2 The oxide adhering to the previously polished surface should be removed by light polishing with a fine abrasive, taking care that the oxide network which has formed on the grain boundaries is retained; then the polishing should be completed by the usual methods. The specimen should then be etched using Vilella's reagent:

— picric acid	1 g
— hydrochloric acid	5 ml
— ethanol	100 ml

6.3.3.3 Result

The preferential oxidation of the boundaries shows up the pattern of austenitic grains.

If the preparation is effected correctly, no oxide globules should appear at the grain boundaries.

In certain cases, it may be necessary to use oblique illumination, or DIC (Differential Interference Contrast) methods, to show up the boundaries in better relief.

6.3.4 “McQuaid-Ehn” method by carburization at 925 °C

6.3.4.1 Field of application

This is a method specifically for carburizing steels and shows up austenitic grain boundaries formed during carburization of these steels. It is not usually suitable for revealing grains actually formed during other heat treatments.

NOTE The “mock carburizing” procedure may also be used. The specimen is subjected to the same thermal treatment but without a carbon-rich atmosphere. It is then heat-treated as the product would be treated. The Bechet-Beaujard reagent is used to reveal the grain boundaries, see 6.3.2.

6.3.4.2 Preparation

The specimens shall be free from any trace of decarburization or of surface oxidation. Any prior treatment, either cold, hot, mechanical, etc., may have an effect on the shape of the grain obtained; the product specification shall state the treatments to be carried out before determination in cases where it is advisable to take into account these considerations.

After carburizing, the specimen must be cooled at a rate slow enough to precipitate cementite at the grain boundaries in the hypereutectoid surface region of the carburized specimen.

Carburization shall be achieved by maintaining the specimen at (925 ± 10) °C for 6 h. This is generally done by keeping the carburizing chamber at (925 ± 10) °C for 8 h, including a pre-heating period. In most cases, a carburized layer of approximately 1 mm is obtained. After carburizing, cool the specimen at a rate slow enough to ensure that the cementite is precipitated at the grain boundaries of the hypereutectoid zone of the carburized layer.

Fresh carburizing compound shall be used each time.

6.3.4.3 Specimen preparation

The carburized specimen shall be sectioned normally to its surface. One of the sections shall be prepared for micrographic examination and etched using either a) or b).

a) “Le Chatelier and Igewski” reagent (alkaline sodium picrate):

— picric acid	2 g
---------------	-----

- sodium hydroxide 25 g
- water 100 ml

Use this reagent by immersion at 100 °C, for at least 1 min, or at room temperature by means of electrolytic etching 6 V d.c. for 60 s.

b) Nital:

- nitric acid 2 ml to 5 ml
- ethanol to make up to 100 ml

Other reagents may be used as long as the same results are obtained.

6.3.4.4 Result

The prior-austenite grain boundaries in the hypereutectoid carburized surface layer will be delineated by proeutectoid cementite.

6.3.5 Proeutectoid ferrite method

NOTE Guidelines for the use of this method depending on the microstructure of the steel product are given in Annex A.

6.3.5.1 Principle

This method is suitable for carbon steel with about 0,25 % to 0,6 % carbon and for low-alloy steels such as manganese-molybdenum, 1 % chromium, 1 % chromium-molybdenum and 1,5 % nickel-chromium. The prior-austenitic grain boundaries are revealed as a network of proeutectoid ferrite.

6.3.5.2 Preparation

Use the austenizing conditions as given in the product standard. In the case of carbon or other low hardenability steel, either air cool, furnace cool or partially transform isothermally the test pieces in such a manner as to outline the austenitic grain boundaries with ferrite.

In the case of alloy steels, after austenitizing, partially transform isothermally the test pieces at an appropriate temperature within the range 650 °C to 720 °C and then water quench.

NOTE 1 The time required for transformation will vary according to the steel, but usually sufficient ferrite has precipitated in 1 min to 5 min, although longer times, up to about 20 min, can sometimes be required.

NOTE 2 For alloy steels, a test piece 12 mm × 6 mm × 3 mm is suitable to obtain uniform transformation during the isothermal treatment.

6.3.5.3 Polishing and etching

Section, polish and etch the test pieces for micrographic examination. Etch the test pieces with a suitable etchant such as hydrochloric acid and picric acid (Vilellas' reagent).

6.3.6 Bainite or gradient-quench method

NOTE Guidelines for the use of this method depending on the microstructure of the steel product are given in Annex A.

6.3.6.1 Principle

This method is suitable for steels of approximately eutectoid composition, i.e., having a carbon content of 0,7 % by mass or higher. The boundaries of the prior-austenitic grains are revealed by a network of fine pearlite or bainite outlining the martensite grains.

6.3.6.2 Preparation

Heat the test piece to a temperature not more than 30 °C above A_{C3} (i.e., the temperature at which ferrite completes its transformation to austenite during heating) to ensure full austenitization.

Cool the specimen at a controlled rate to produce a partially hardened structure of fine pearlite or bainite outlining the martensite grains.

This structure may be produced in one of the following ways:

- a) by completely quenching in water or oil, as appropriate, a bar of cross-sectional dimensions such that it will fully harden at the surface but only partially harden in the centre;
- b) by gradient quenching a length of bar, 12 mm to 25 mm diameter or square, by immersing it in water for a part of the length only.

Then polish and etch.

6.3.7 Sensitization of austenitic stainless and manganese steels

The grain boundaries may be developed through precipitation of carbides by heating within the sensitizing temperature range, 482 °C to 704 °C (900 °F to 1 300 °F). Any suitable carbide-revealing etchant can be used.

NOTE This method should not be used in case of very low carbon contents in austenitic grades.

6.3.8 Other methods for revealing prior-austenitic grain boundaries

For certain steels, after simple heat treatment (annealing or normalizing, quenching and tempering, etc.), the pattern of the austenitic grains may appear in the following forms under micrographic examination: a network of proeutectoid ferrite surrounding pearlite grains, a network of very fine pearlite surrounding martensite grains, etc. The austenitic grain may also be revealed by thermal etching under vacuum (not necessarily followed by oxidation). The product specification shall mention these simplified methods²⁾ in these cases.

7 Characterization of grain size

7.1 Characterization by an index

7.1.1 Formulae

The index is defined in 3.2 by the formula

$$m = 8 \times 2^G \quad (1)$$

This formula may be stated as

2) Amongst these methods are the following:

- precipitation on the grain boundaries during cooling;
- gradient quenching method, etc.

$$G = \frac{\lg m}{\lg 2} - 3 \quad (2a)$$

or

$$G = \frac{\lg m}{0,301} - 3 \quad (2b)$$

7.1.2 Assessment by comparison with standard grain size charts

The image examined on the screen (or on a photomicrograph) is compared with a series of standard charts³⁾ or overlays (eye-piece graticules designed for grain size measurement can be used providing these are traceable to National or International standards). The standard charts at a magnification of $\times 100$ are numbered from 00 to 10 so that their number is equal to the index G .

NOTE All standard charts in Annex B are displayed at a magnification of $\times 100$. The different sizes of circles are used between 00 to 2,5 and 3,0 to 10. The standard chart of 1,0 adopts the same standard chart of 3,0 with $\times 2$ magnification which is in conformity with Formula (1).

The standard chart with the grain size closest to that of the examined fields of the specimen can then be determined. A minimum of three randomly-selected fields shall be assessed on each specimen.

Where the magnification g of the image on the screen or photomicrograph is not $\times 100$, the index G shall be equal to the number M of the closest standard chart, modified as a function of the ratio of the magnifications:

$$G = M + 6,64 \times \lg \frac{g}{100} \quad (3)$$

Table 2 gives the relationship between the indices for the usual magnifications.

Table 2 — Relationship between indices for the usual magnifications

Magnification of the image	Index of metal grain for an image identified on a standard chart No.							
25	- 3	- 2	- 1	0	1	2	3	4
50	- 1	0	1	2	3	4	5	6
100	1	2	3	4	5	6	7	8
200	3	4	5	6	7	8	9	10
400	5	6	7	8	9	10	11	12
500	5,6	6,6	7,6	8,6	9,6	10,6	11,6	12,6
800	7	8	9	10	11	12	13	14

7.1.3 Planimetric method

The evaluation method is defined in Annex C.

7.1.4 Estimation of the index

Whether the estimate is carried out by comparison or by count, the accuracy obtained is rarely greater than a half-unit. The index shown shall be rounded to a whole number.

3) These standard charts are defined in ASTM E112 [(plates IA and IB) (Annex B)]. The standard charts selected should be adhered to throughout the whole of the examination.

7.2 Characterization by the intercept method

Count the number of grains intercepted, N , or the number of grain boundary intersections, P , with a test line of known length on a projection screen, on a reticle, on a television-type monitor or on a photomicrograph of a representative of the bulk of the specimen at a known magnification, g .

The measuring line may be straight or circular. The measuring grid in Figure 2 shows the types of recommended measuring line.

The grid shall be applied only once to the field examined. It is applied at random to an adequate number of fields to have a valid count.

The dimensions in millimetres of the three circles shall be:

Diameter	Circumference
79,58	250,0
53,05	166,7
26,53	83,3
Total	500,0

7.2.1 Linear intercept segment method

7.2.1.1 Figure 2 shows a test pattern that can be used to measure grain size by the intercept method. The three concentric circles have a total line length of 500 mm. A circular test grid averages out variations in the shape of equiaxed grains and avoids the problem of lines ending within grains. Figure 2 also has four straight lines; two oriented diagonally, one vertically and one horizontally. Each diagonal line has a length of 150 mm while the horizontal and vertical lines are each 100 mm long. The straight lines will also average out variations in the shape of equiaxed grains. Alternatively, if the degree of grain elongation is of interest, grain counts can be made using only the vertical and horizontal lines (separately) when they are aligned so that the horizontal line is parallel to the deformation axis (and the vertical line is then perpendicular to the deformation axis) on a longitudinally-oriented polished plane [see 7.2.3, c)].

The magnification shall be selected so that at least 50 intercepts are obtained in any one field. At least five randomly selected fields shall be assessed with a total number of intercepts of at least 250.

NOTE If the grain size of the specimen requires the magnification to be changed in order to achieve the required number of intercepts, the length of the measuring lines can also be varied providing that the orientation of the measuring lines is arranged to take account of the effects of anisotropy.

The following rules apply to interception and intersection counts of single-phase grain structures using straight test lines.

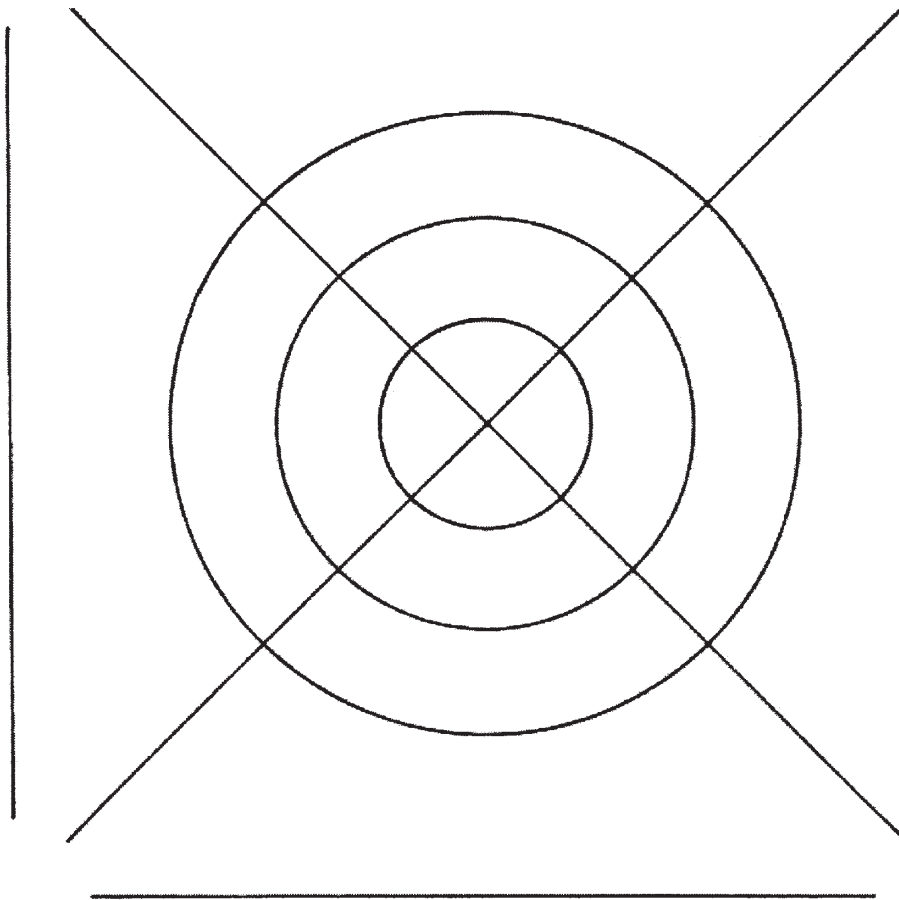


Figure 2 — Recommended measurement grid for the intercept segment method

7.2.1.2 When the number of intercepted grains, N , is counted:

- if a test line goes through a grain, N is 1;
- if a test line terminates within a grain, N is 0,5;
- if a test line is tangential to a grain boundary, N is 0,5.

7.2.1.3 When the number of grain boundary intersections, P , is counted:

- if a test line passes through a grain boundary, P is 1;
- if a test line is tangential to a grain boundary, P is 1;
- if a test line intersects a triple point, P is 1,5

NOTE The “Snyder-Graff” method, described in Annex C, represents a linear intercept method for tool steel (high-speed steels).

7.2.2 Circular intercept segment method

The pattern of circles shown in Figure 2 is recommended.

The measuring line consists either of a set of three concentric circles as shown in Figure 2 or of one single circle.

The total length of the three circles of the recommended grid shown in Figure 2 is 500 mm. The magnification or diameter of the circle shall be selected so that there are 40 to 50 intercepts when the measurement grid is superposed on the field to be examined.

In the case of a single circle, the largest circle with a circumference of 250 mm is used. In this case, the magnification to be used shall enable at least 25 intercepts to be counted.

The circular intercepted segment method tends to give slightly high intercepted segment values and thus a slightly low number of intersections. In order to compensate for this, the intersections caused by a triple point shall be counted as two intersections instead of 1,5 as is the case with the linear intercepted segment method.

7.2.3 Assessment of results

Counts of the number of intercepts, N , or intersections, P , are made on a number of fields selected at random. The mean value of the number of intercepts, \bar{N} , or intersections, \bar{P} , is calculated.

If L_T is the true length of the test line then

$$\bar{N}_L = \bar{N} / L_T \text{ and } \bar{P}_L = \bar{P} / L_T$$

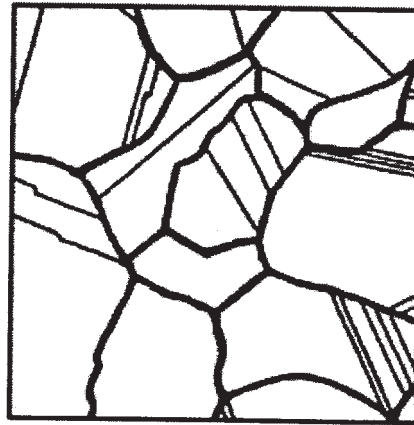
For the case of non-equiaxed grain structures, counts can be made of the number of interceptions, N , or intersections, P , of the grains or grain boundaries, with straight test lines oriented parallel to the three principal directions. These three directions can be found on any two of the three principal test planes (longitudinal, transverse and planar).

The mean number of intercepts per millimetre, \bar{N}_L , or the mean number of intersections per millimetre, \bar{P}_L , is determined from the cube root of the product of the three measurements:

$$\bar{N}_L = (\bar{N}_{L_x} \times \bar{N}_{L_y} \times \bar{N}_{L_z})^{1/3} \text{ and } \bar{P}_L = (\bar{P}_{L_x} \times \bar{P}_{L_y} \times \bar{P}_{L_z})^{1/3}$$

where the bars above the quantities indicate that they are the means (averages) of a number of measurements and x, y, and z indicate the principal directions (longitudinal, transverse and planar).

- a) Grains of different size indices: In certain cases, the specimen examined may include grains belonging to two or more different systems of size indices. This can be recognized by the presence of several grains of greatly differing dimensions from those of the whole, e.g., see ISO 14250.
- b) Twin grains: Unless otherwise specified, these are counted as a single grain, that is, twin boundaries are ignored (see Figure 3).
- c) Non-equiaxed grains: The grain shape can be expressed by dividing the mean lineal intercept length in the deformation direction by the mean lineal intercept length perpendicular to the deformation direction using a longitudinally oriented test specimen. This is referred to as the grain elongation ratio, or the anisotropy index.
- d) Modern methods of grain size measurement: Such as ultrasonic methods, automatic image analysis, etc., can be used to measure grain size of applicable materials providing that the accuracy of the methods has previously been proven by an extensive cross correlation.



— Grain boundaries

Figure 3 — Evaluation of number of grains (twin grains)

8 Test report

The test report shall contain the following information:

- a) grade of the steel examined;
- b) type of grain determined;
- c) method used, operating conditions, method of evaluation (i.e., manual or automatic image analysis);
- d) grain size index or the value of the mean segment.

Annex A (informative)

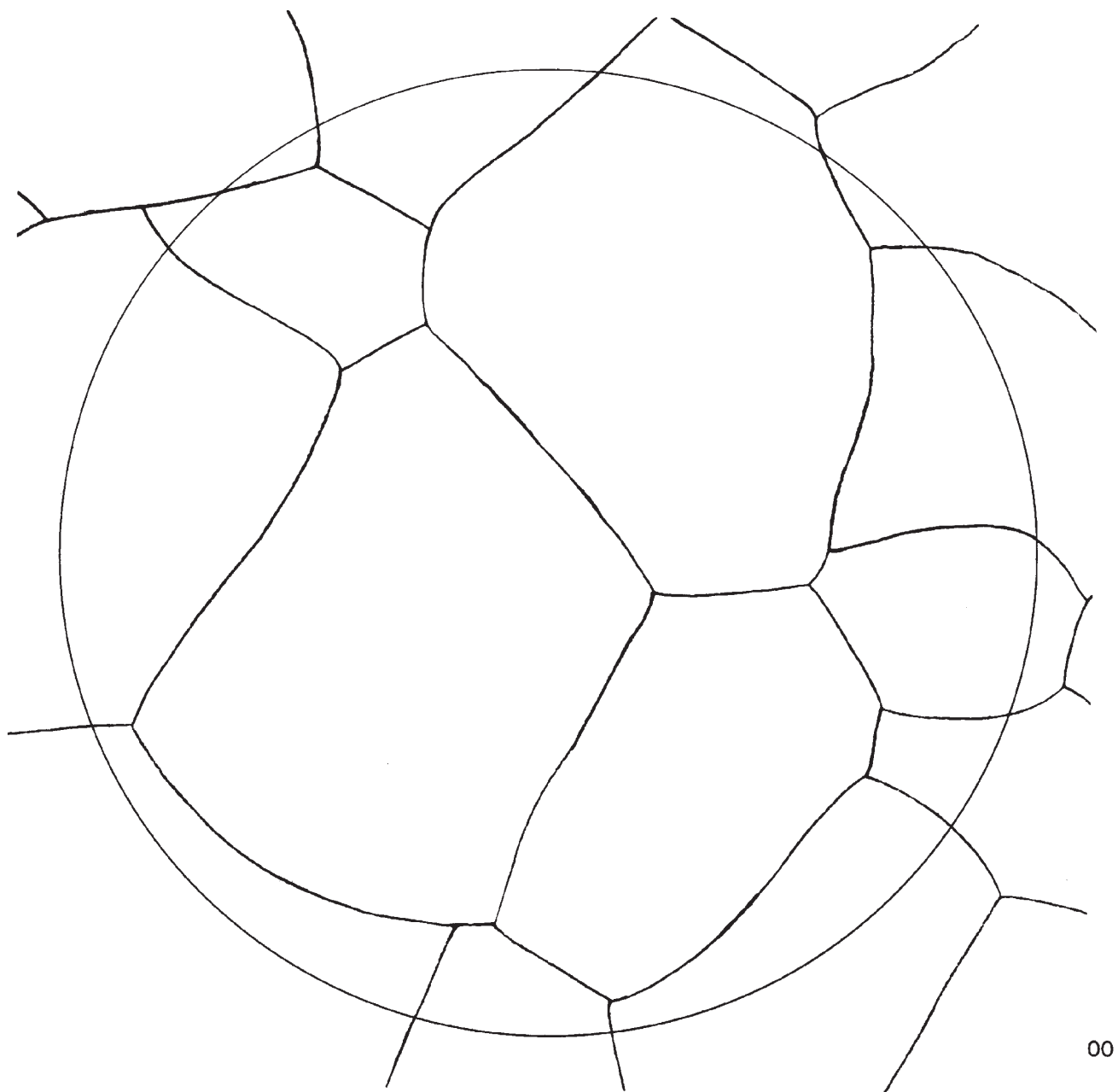
Summary of methods for revealing ferritic, austenitic or prior-austenitic grain boundaries in steels

Method	Applicable steels
The "Bechet-Beaujard" etch method (see 6.3.2)	Steels with martensitic, tempered martensitic or bainitic structures that contain $\geq 0,005$ % phosphorus
The "Kohn" oxidation method (see 6.3.3)	Carbon and low-alloy steels
The "McQuaid-Ehn" carburizing method (see 6.3.4)	Carburizing steels
The mock carburizing method (see 6.3.4)	
The proeutectoid ferrite delineation method (see 6.3.5)	Coarse-grained carbon steels with between 0,26 % and 0,6 % carbon; also low-alloy steels such as Mn-Mo, 1 % Cr, 1 % Cr-Mo and 1,5 % Cr-Ni
The bainite or gradient quench method (see 6.3.6)	Coarse-grained steels of approximately eutectoid carbon content, i.e., 0,7 % to 0,8 % carbon
The grain boundary sensitization method (see 6.3.7)	Unstabilized austenitic or duplex stainless steels with a carbon content $> 0,025$ % ^a
The quenching and tempering method (see 6.3.8)	Carbon steels
Direct etching using a suitable reagent (see 6.2)	All single-phase steels
^a Austenitic Mn steels will precipitate a fine carbide aggregate at the grain boundaries when aged between 550 °C and 600 °C.	

Annex B (normative)

Determination of grain size — Standard charts taken from ASTM E112⁴⁾

Plate 1A — Untwinned grains (flat etch) × 100



4) The charts are reproduced, with permission, from ASTM E112. For a comparison chart showing the grain size, please contact ASTM, 100 Barr Harbor Drive, Philadelphia, PA 19428-3914, USA (refer to adjunct No. ADJ 12-501120-10).

Plate 1A (*continued*) — Untwinned grains (flat etch) $\times 100$

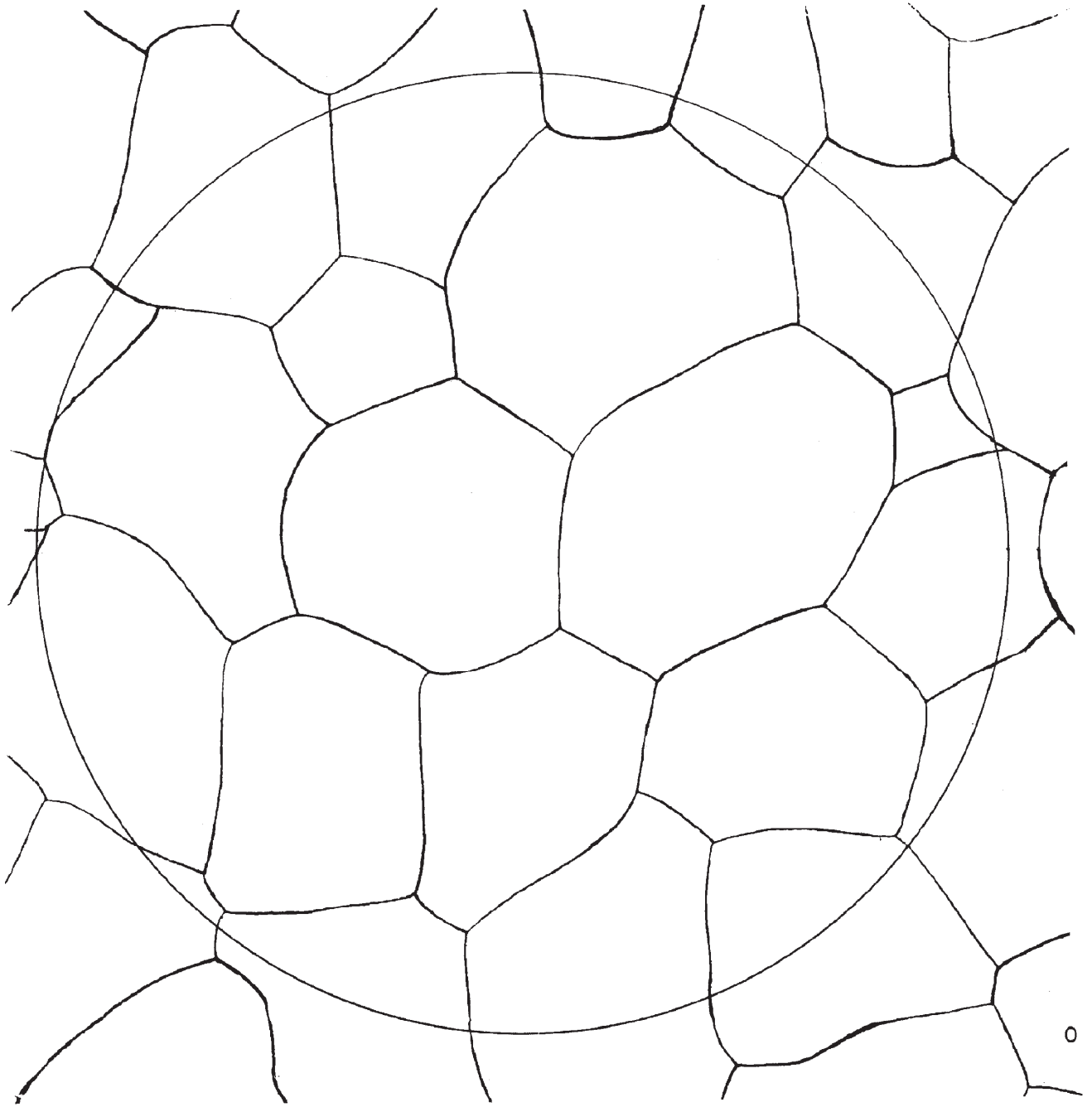
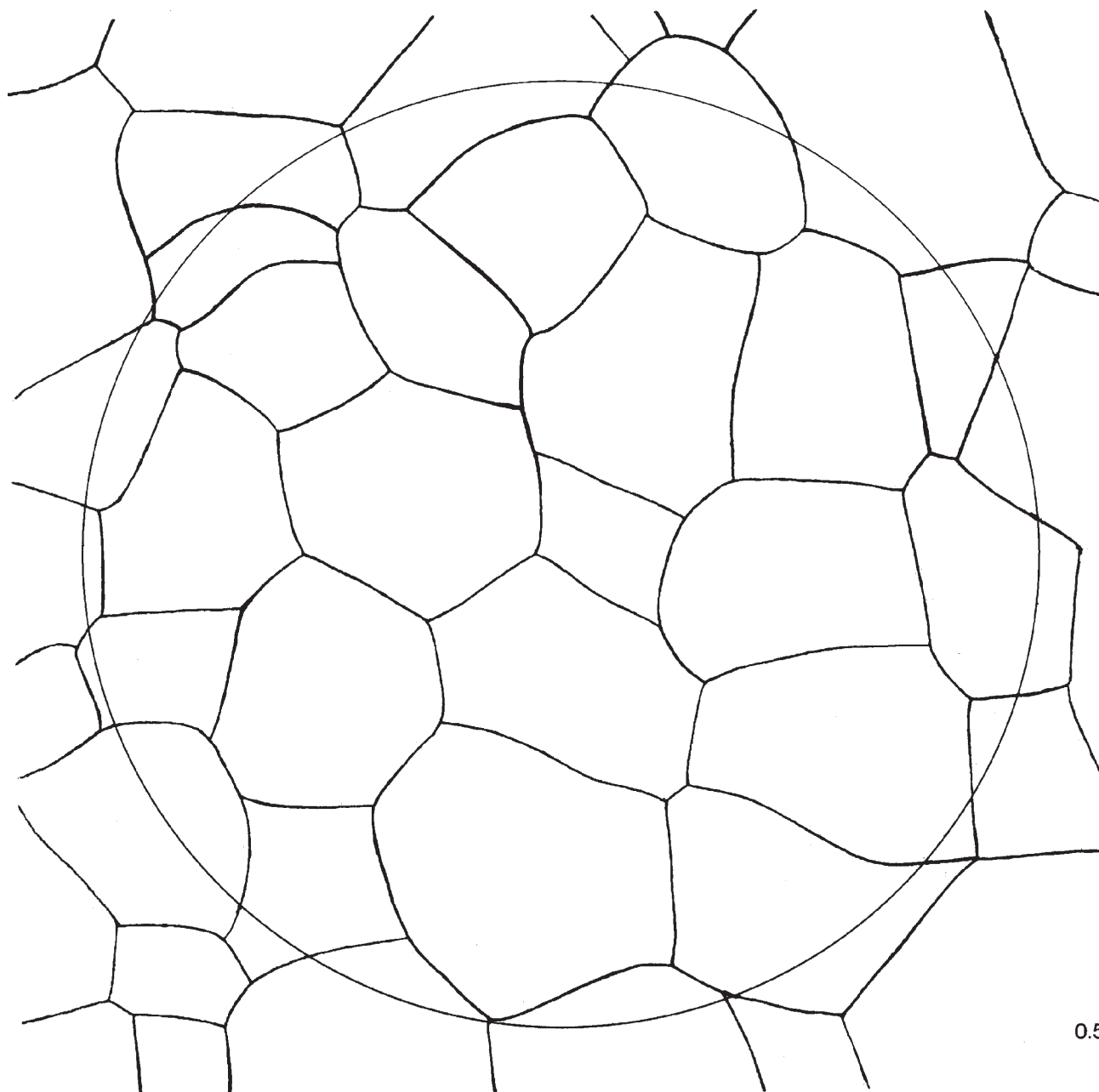


Plate 1A (continued) — Untwinned grains (flat etch) $\times 100$



0.5

Plate 1A (*continued*) — Untwinned grains (flat etch) $\times 100$

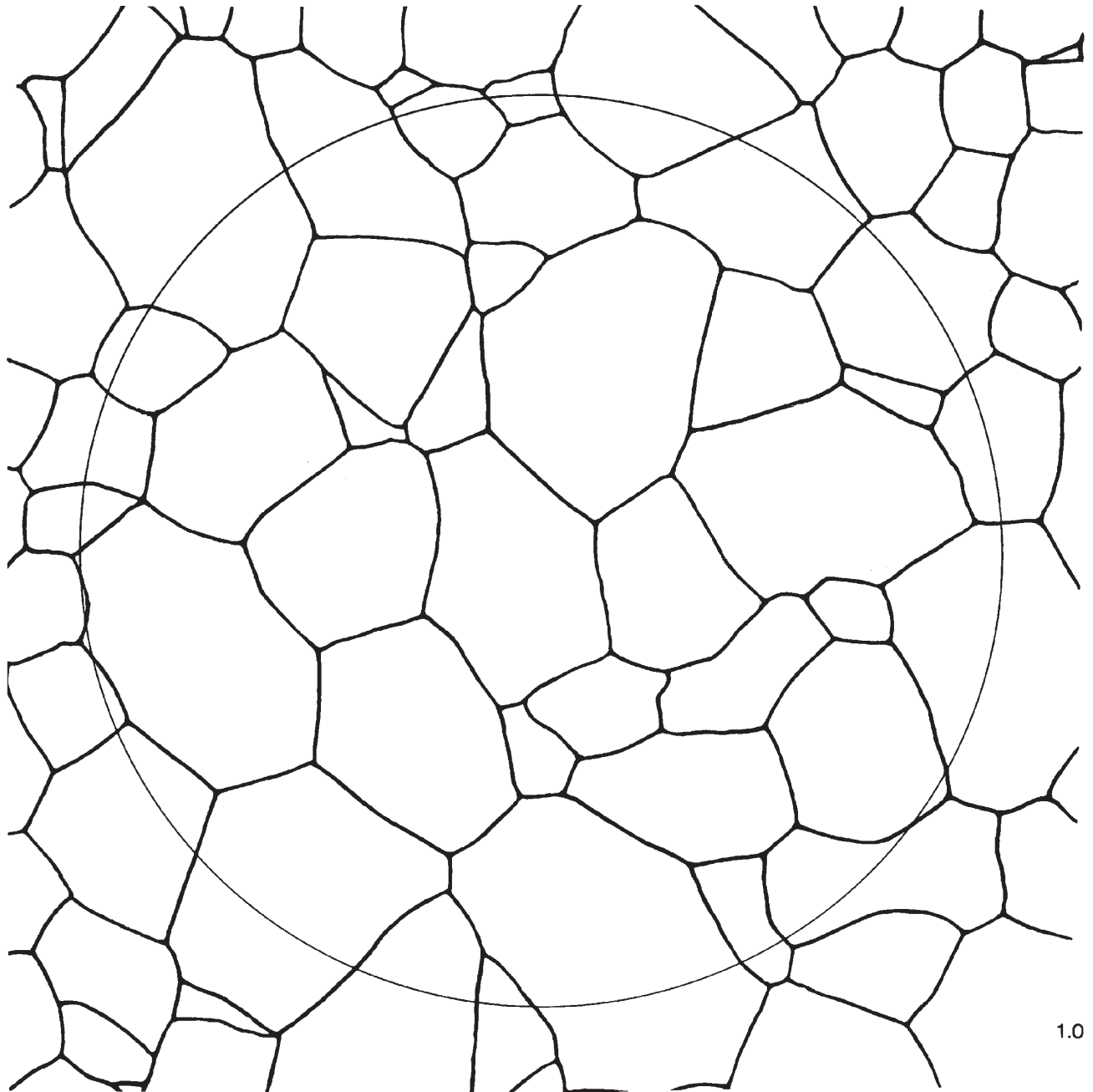


Plate 1A (continued) — Untwinned grains (flat etch) $\times 100$

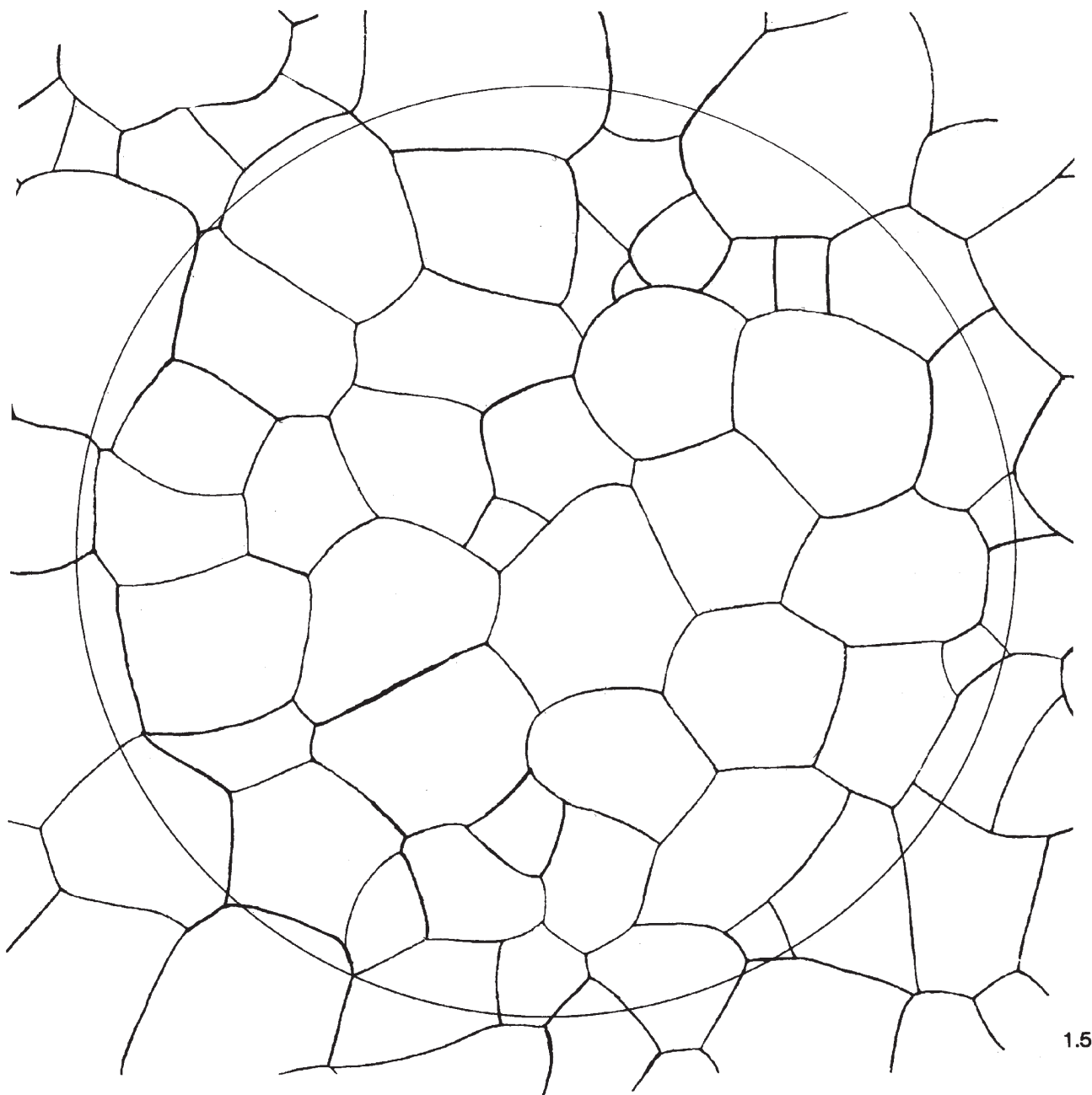
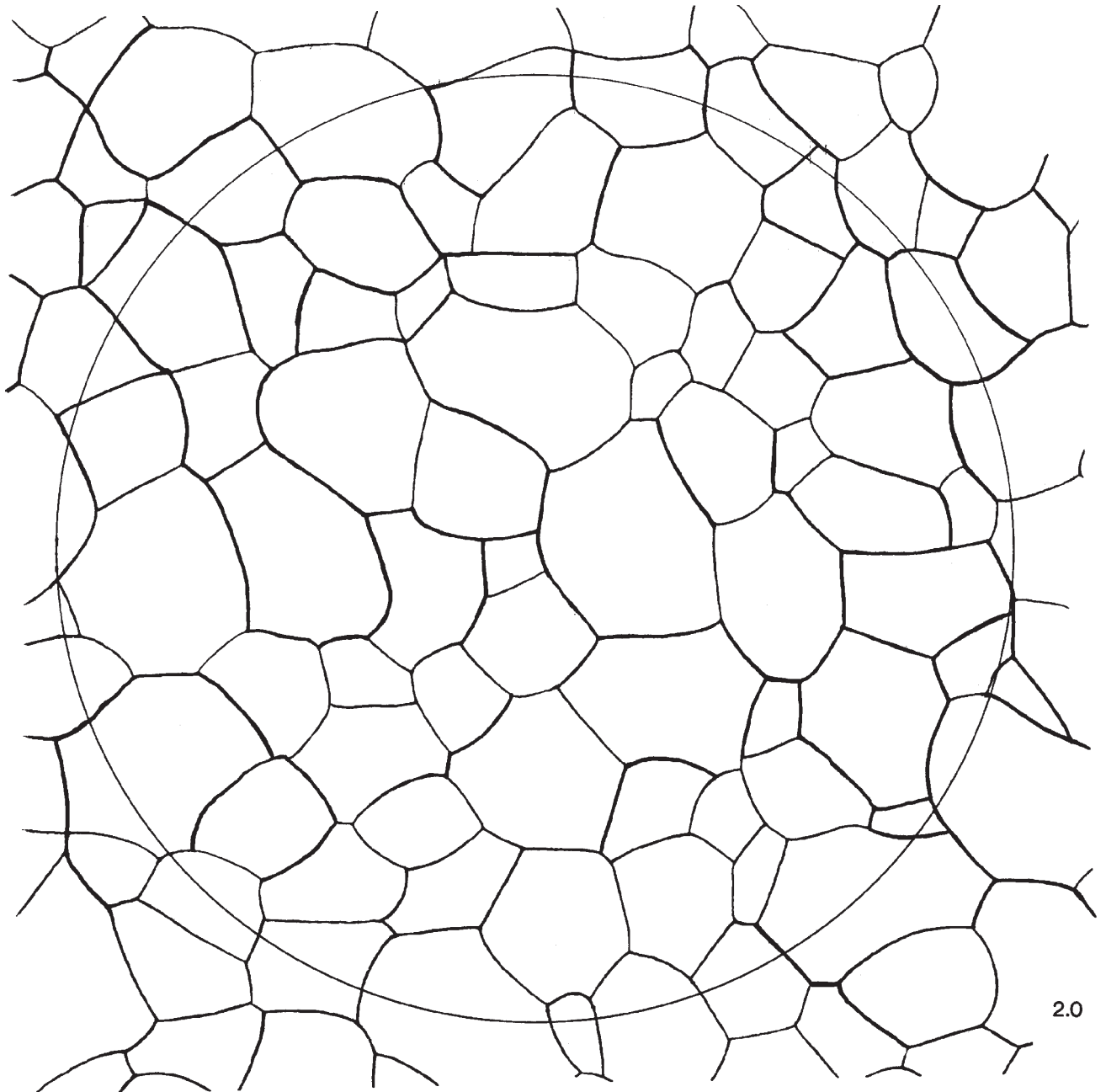
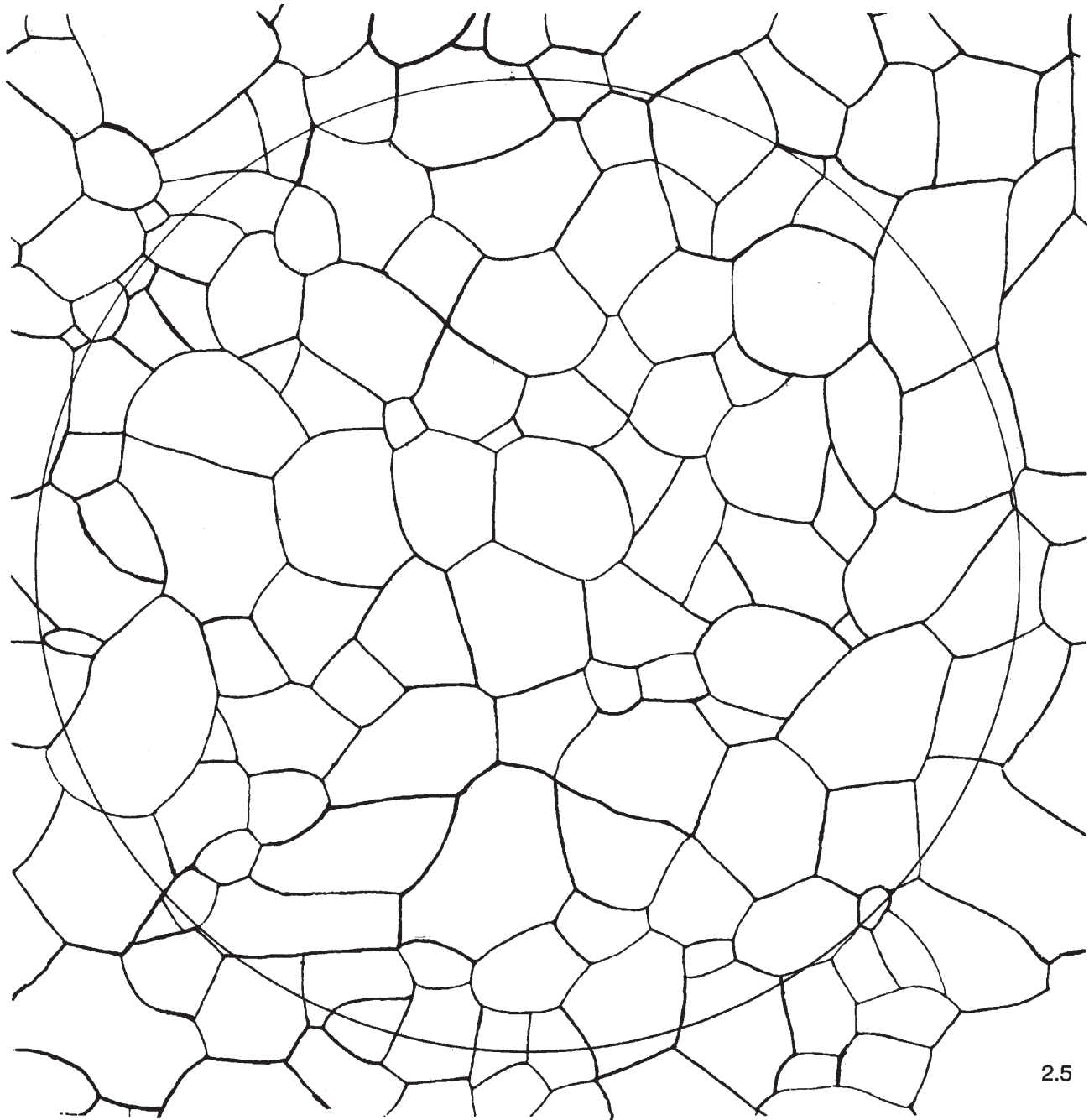


Plate 1A (*continued*) — Untwinned grains (flat etch) $\times 100$



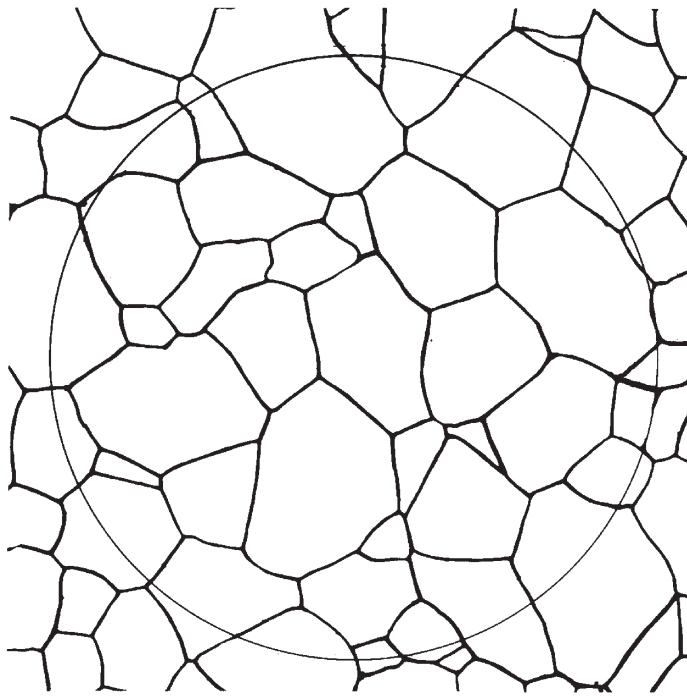
2.0

Plate 1A (continued) — Untwinned grains (flat etch) $\times 100$

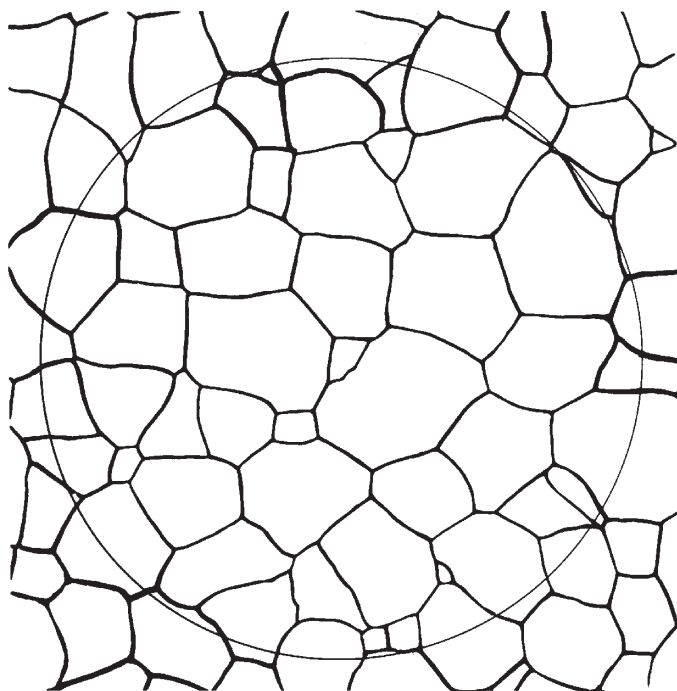


2.5

Plate 1B — Untwinned grains (flat etch) × 100

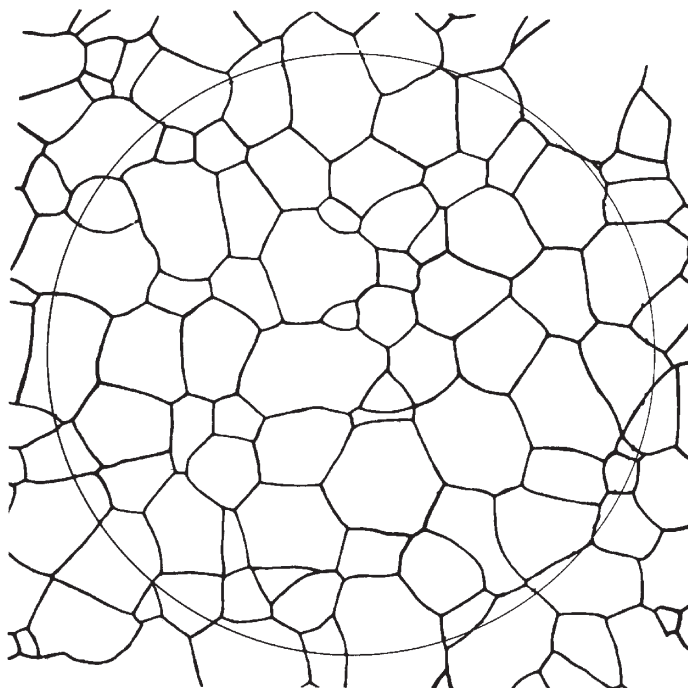


3.0

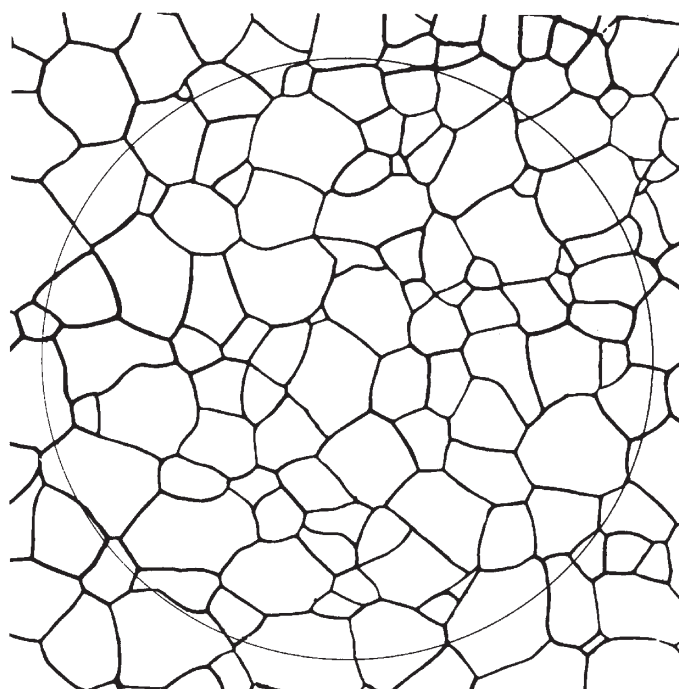


3.5

Plate 1B (*continued*) — Untwinned grains (flat etch) $\times 100$

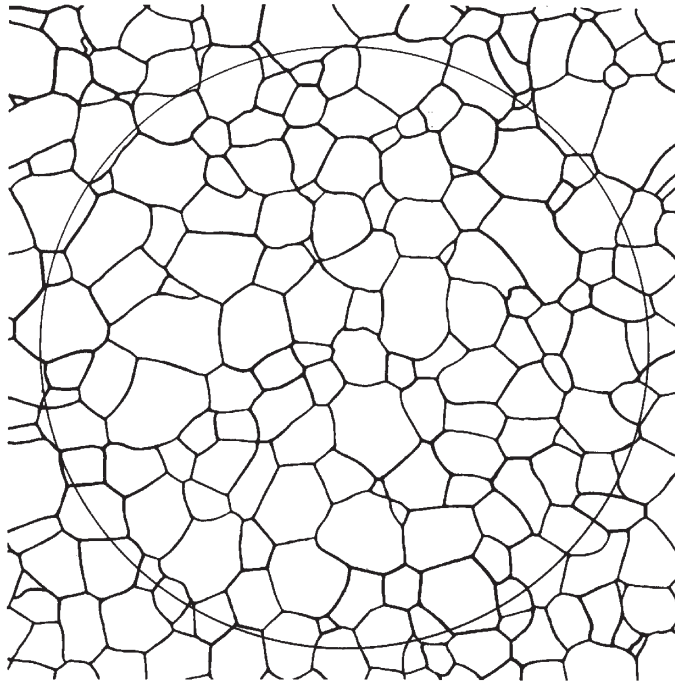


4.0

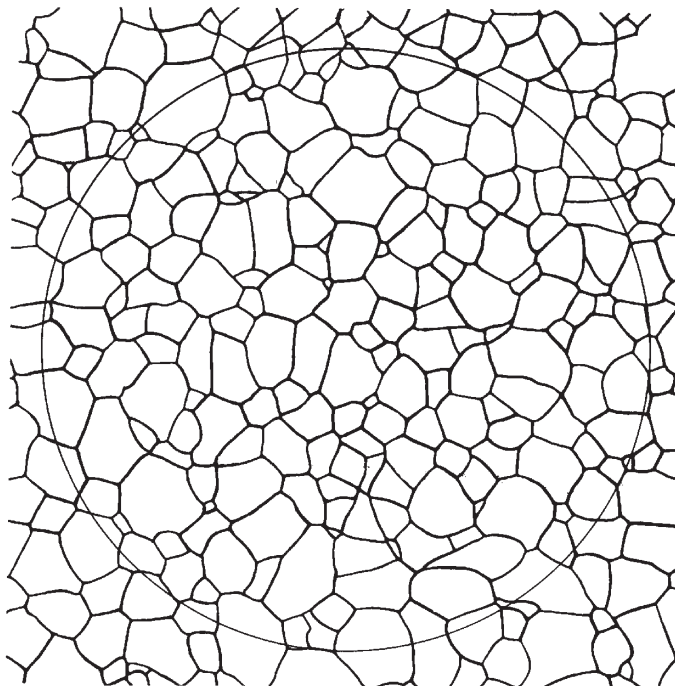


4.5

Plate 1B (*continued*) — Untwinned grains (flat etch) $\times 100$

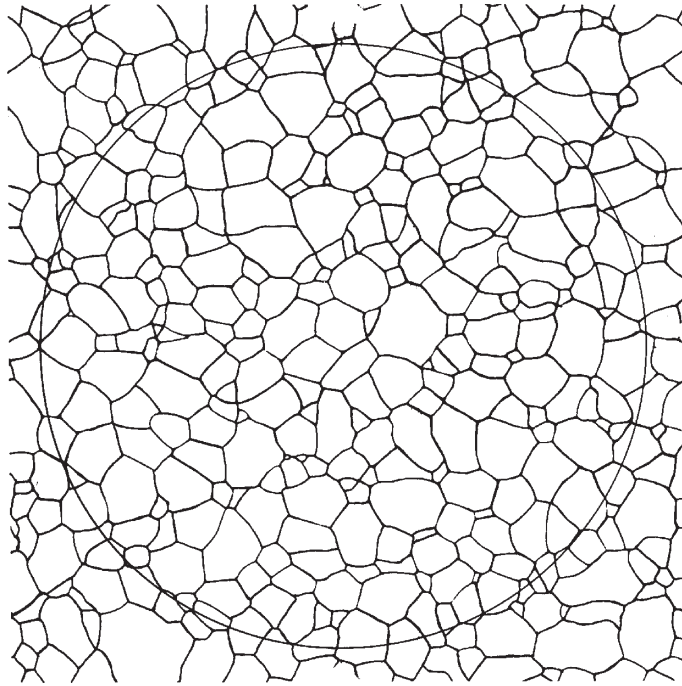


5.0

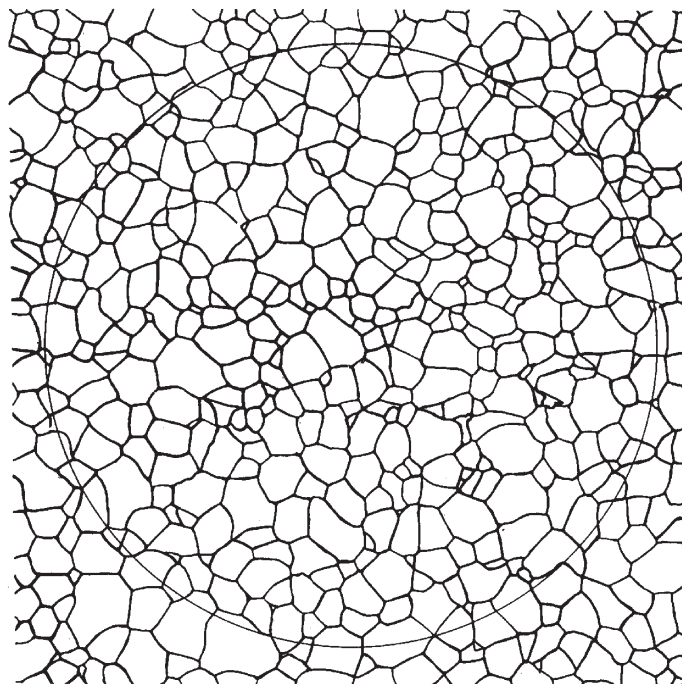


5.5

Plate 1B (*continued*) — Untwinned grains (flat etch) $\times 100$

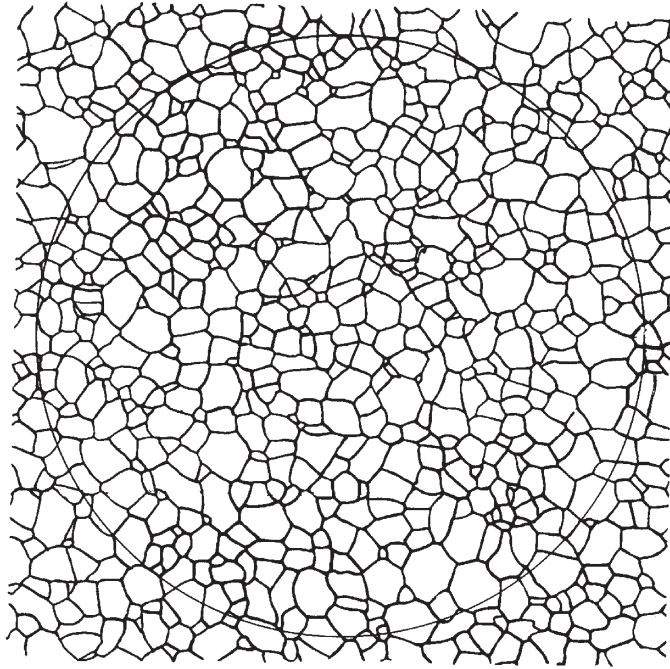


6.0

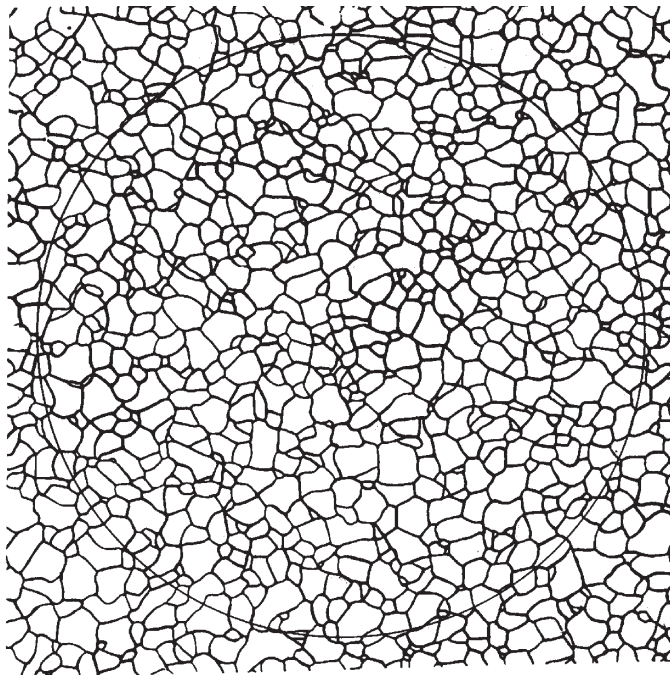


6.5

Plate 1B (*continued*) — Untwinned grains (flat etch) $\times 100$

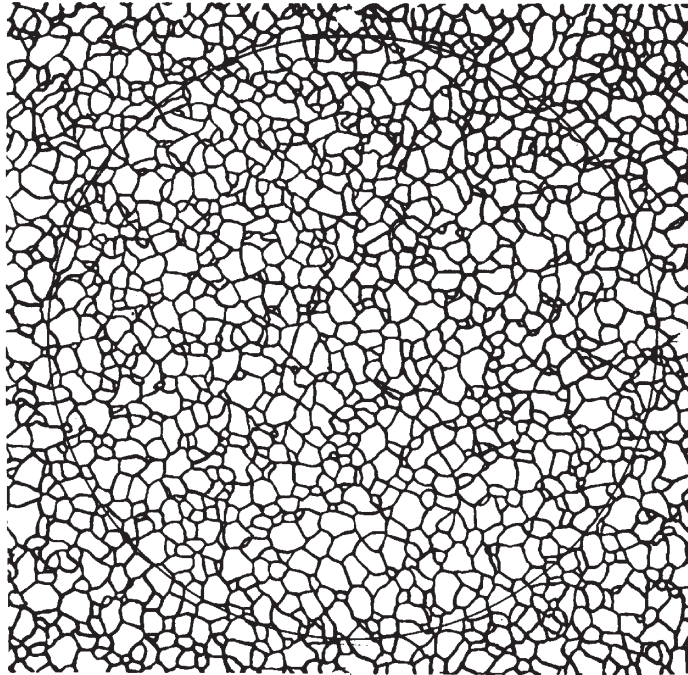


7.0

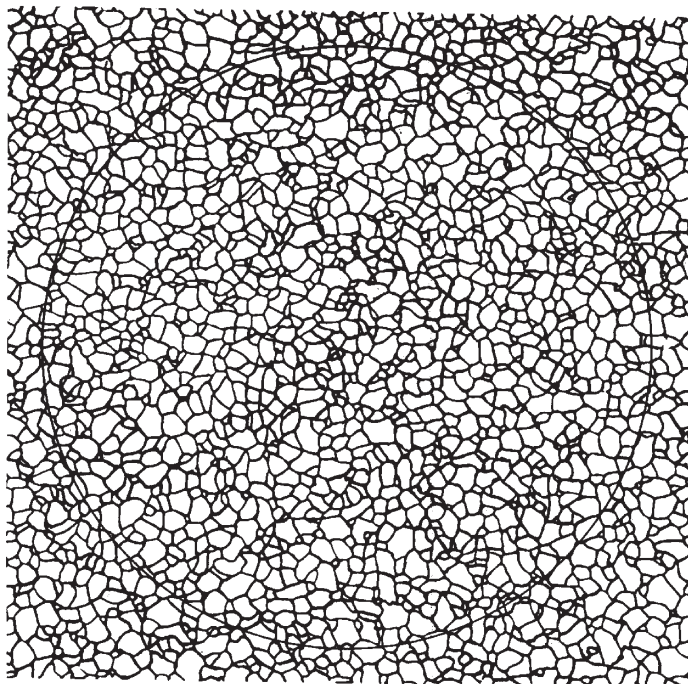


7.5

Plate 1B (*continued*) — Untwinned grains (flat etch) × 100

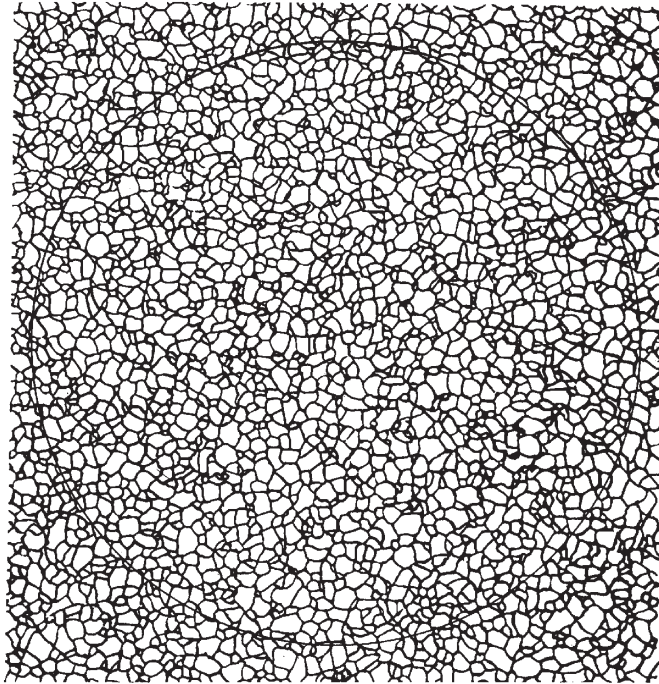


8.0

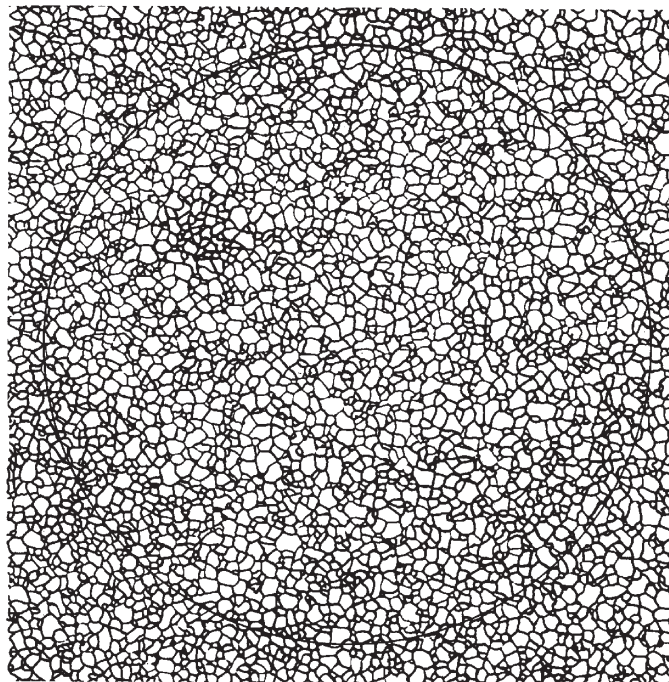


8.5

Plate 1B (*continued*) — Untwinned grains (flat etch) × 100

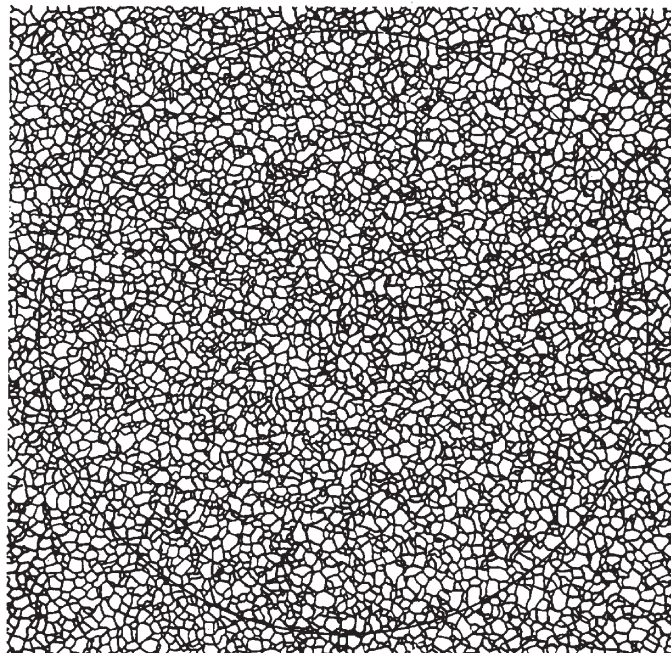


9.0



9.5

Plate 1B (*continued*) — Untwinned grains (flat etch) $\times 100$



10.0

Annex C (normative)

Evaluation method

C.1 Principle of the planimetric method

Historically, a circle measuring 79,8 mm in diameter was drawn on or superimposed over a micrograph or a live image on a ground glass projection screen. The magnification was adjusted so that the circular area contained at least 50 grains. This recommendation was made to minimize the counting error associated with a circular test pattern.

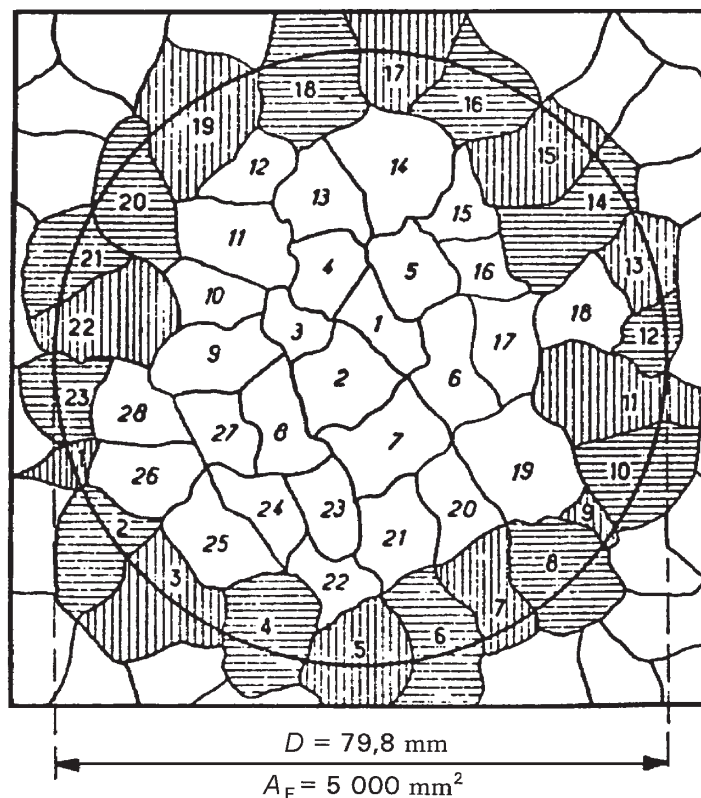


Figure C.1 — Evaluation of number of grains in an area enclosed by a circle

Two counts are made: n_1 is the number of grains completely within the test circle while n_2 is the number of grains intersected by the test circle.

The total number of equivalent grains is

$$n_{100} = n_1 + \frac{n_2}{2} \quad (\text{C.1})$$

The number of grains per mm², m , on the specimen surface is computed from

$$m = 2n_{100} \tag{C.2}$$

or, in the case of any magnification, g

$$m = (g^2/5\ 000)n_g \tag{C.3}$$

where 5 000 is the test circle area in mm².

This approach assumes that, on average, half of the grains intersected by the test circle are within the circle while half are outside the circle. This assumption is valid for a straight line through a grain structure, but not for a curved line. The bias created by this assumption increases as the number of grains inside the test circle decreases. If the number of grains within the test circle is at least 50, the bias is about 2 %.

A simple way to avoid this bias, irrespective of the number of grains within the test figure, is to use a square or rectangle. However, the counting procedure must be modified slightly. First, it is assumed that the grains intersecting each of the four corners are, on average, one fourth within the figure and three-fourths outside. These four corner grains together equal one grain within the test box.

Ignoring the four corner grains, a count is made of n_1 , the grains completely within the box; and, n_2 , the grains intersected by the four sides of the box (see Figure C.1). Equation C.1 now becomes:

$$n_{100} = (n_1 + 0,5n_2 + 1) \tag{C.4}$$

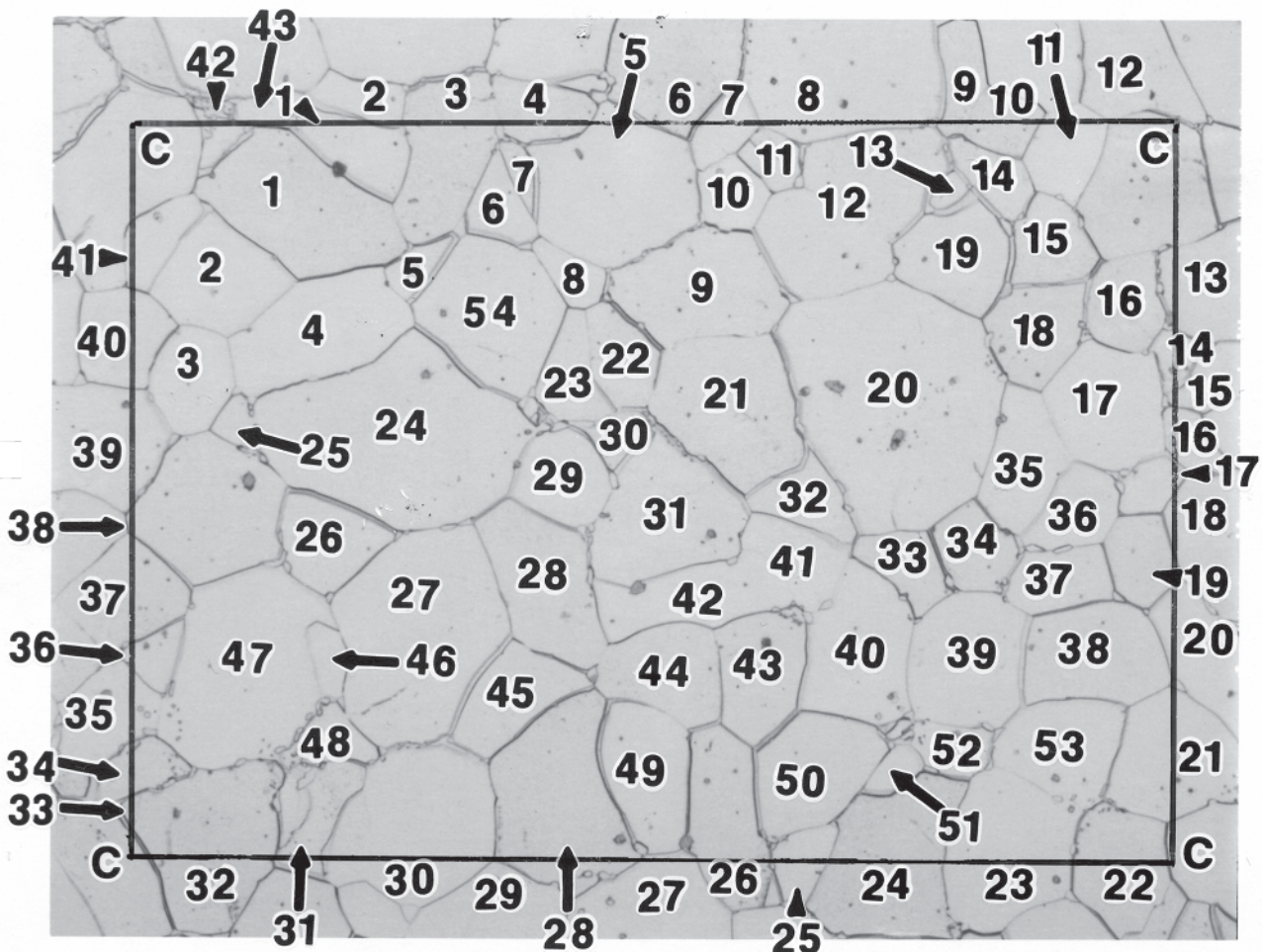


Figure C.2 — Evaluation of the number of intercepts or intersections

The number of grains per square millimetre, m , on the surface of the specimen is

$$m = (g^2/A_F) n_{100} \quad (\text{C.5})$$

where A_F is the apparent area of the test figure used for grain counting in mm^2 .

The mean grain area in square millimetres is calculated from

$$\bar{a} = \frac{1}{m} \quad (\text{C.6})$$

It has been common practice to calculate a mean grain diameter from the following equation, but use of this approach is not recommended as it implies that grains are square in cross section, which they are not.

$$\bar{d} = \bar{a}^{1/2} \quad (\text{C.7})$$

A nominal value of m corresponds to each value of G . The values of m calculated by formula (C.2) or (C.3) within the limits given in Table C.1 are given to a whole value of G .

C.2 “Snyder-Graff” method⁵⁾

C.2.1 Field of application

This method is used for determining the prior-austenitic grain size of hardened and tempered high-speed steels by means of the linear intercept method.

C.2.2 Preparation

The specimen, taken from the product that is usually in the hardened and tempered condition, shall not receive any supplementary heat treatment.

After being polished, the specimen shall be etched using nital containing up to 10 % by volume of nitric acid in ethanol. Etch the specimen long enough to clearly reveal the prior-austenitic grain boundaries. Several successive polish/etch cycles may be necessary. The surface of the specimen is more or less coloured depending on the type of heat treatment undergone by the product.

C.2.3 Measuring

Under a magnification of $\times 1\,000$, the number of grains intercepted by a measuring line 125 mm long shall be counted. Five counts shall be carried out in different directions in fields selected at random.

C.2.4 Result

Unless specified to the contrary, the arithmetic mean of the number of grains intercepted in five counts characterizes the grain size. The mean intercepted segment may be determined from this value.

5) Snyder, R.W. and Graff, H.F., Study of grain size in hardened high-speed steel, *Metal Progress* (1938), April, pp. 377-80.

Table C.1 — Evaluation of number of grains as a function of various parameters

Grain size indices G	Number of grains, per square millimetre m		Mean diameter of grain \bar{d}	Mean area of grain \bar{a}	Mean intersected segment l	Mean number of intercepts on the measuring line, per millimetre
	Nominal value	Limit values from (excl.) to (incl.)	mm	mm ²	mm	
-7	0,062 5	0,046 0,092	4	16	3,577	0,279
-6	0,125	0,092 0,185	2,828	8	2,529	0,395
-5	0,25	0,185 0,37	2	4	1,788	0,559
-4	0,50	0,37 0,75	1,414	2	1,265	0,790
-3	1	0,75 1,5	1	1	0,894	1,118
-2	2	1,5 3	0,707	0,5	0,632	1,582
-1 (00)	4	3 6	0,500	0,25	0,447	2,237
0	8	6 12	0,354	0,125	0,320	3,125
1	16	12 24	0,250	0,062 5	0,226	4,42
2	32	24 48	0,177	0,031 2	0,160	6,25
3	64	48 96	0,125	0,015 6	0,113	8,84
4	128	96 192	0,088 4	0,007 81	0,080	12,5
5	256	192 384	0,062 5	0,003 90	0,056 6	17,7
6	512	384 768	0,044 2	0,001 95	0,040 0	25,0
7	1 024	768 1 536	0,031 2	0,000 98	0,028 3	35,4
8	2 048	1 536 3 072	0,022 1	0,000 49	0,020 0	50,0
9	4 096	3 072 6 144	0,015 6	0,000 244	0,014 1	70,7
10	8 192	6 144 12 288	0,011 0	0,000 122	0,010 0	100
11	16 384	12 288 24 576	0,007 8	0,000 061	0,007 07	141
12	32 768	24 576 49 152	0,005 5	0,000 030	0,005 00	200
13	65 536	49 152 98 304	0,003 9	0,000 015	0,003 54	283
14	131 072	98 304 196 608	0,002 8	0,000 007 5	0,002 50	400
15	262 144	196 608 393 216	0,002 0	0,000 003 7	0,001 70	588
16	524 288	393 216 786 432	0,001 4	0,000 001 9	0,001 20	833
17	1 048 576	786 432 1 572 864	0,001 0	0,000 000 95	0,000 87	1 149

NOTE This table gives the values between the different parameters for equiaxed grains.

C.3 An alternative system of grain size definition

C.3.1 General

In addition to the grain size definition system described in this International Standard, there is one other system, as used in the U.S.A.

This system (see ASTM E112) defines the grain size by an index G , known as the ASTM grain size, as shown in C.3.2 and C.3.3.

C.3.2 Mean intersected segment method

Index G (ASTM) = 0, corresponds to a mean intersected segment of 32,0 mm measured at a magnification of $\times 100$.

The equation giving the other indices as a function of

— the mean intersected segment is

$$G \text{ (ASTM)} = - 3,287 7 - 6,643 9 \lg l \quad (\text{C.8})$$

— the mean number of intercepts per unit length (mm) is

$$G \text{ (ASTM)} = - 3,287 7 + 6,643 9 \lg \bar{N}_L \quad (\text{C.9})$$

C.3.3 Count method

By definition, index G (ASTM) = 1 corresponds to 15,5 grains per unit area (square millimetre).

The equation giving the other indices as a function of the number of grain per unit area (square millimetre) is

$$G \text{ (ASTM)} = - 2,954 2 + 3,321 9 \lg m \quad (\text{C.10})$$

C.3.4 Numerical ratios between the various grain size indices in the case of regular structures

The ASTM index gives a grain size slightly larger than the one defined by this International Standard, but the difference does not reach one twentieth of an index unit. This is negligible, as the estimation of grain size cannot generally be accurate to more than one half a unit under even the most favourable conditions.

Equations (2a) and (2b) given in 7.1 may be written as

$$G = - 3 + 3,321 9 \lg m \quad (\text{C.11})$$

Comparing this formula with formula (C.10) shows that

$$G \text{ (ASTM)} - G = 0,045 8$$

British Standards Institution (BSI)

BSI is the national body responsible for preparing British Standards and other standards-related publications, information and services.

BSI is incorporated by Royal Charter. British Standards and other standardization products are published by BSI Standards Limited.

About us

We bring together business, industry, government, consumers, innovators and others to shape their combined experience and expertise into standards-based solutions.

The knowledge embodied in our standards has been carefully assembled in a dependable format and refined through our open consultation process. Organizations of all sizes and across all sectors choose standards to help them achieve their goals.

Information on standards

We can provide you with the knowledge that your organization needs to succeed. Find out more about British Standards by visiting our website at bsigroup.com/standards or contacting our Customer Services team or Knowledge Centre.

Buying standards

You can buy and download PDF versions of BSI publications, including British and adopted European and international standards, through our website at bsigroup.com/shop, where hard copies can also be purchased.

If you need international and foreign standards from other Standards Development Organizations, hard copies can be ordered from our Customer Services team.

Subscriptions

Our range of subscription services are designed to make using standards easier for you. For further information on our subscription products go to bsigroup.com/subscriptions.

With **British Standards Online (BSOL)** you'll have instant access to over 55,000 British and adopted European and international standards from your desktop. It's available 24/7 and is refreshed daily so you'll always be up to date.

You can keep in touch with standards developments and receive substantial discounts on the purchase price of standards, both in single copy and subscription format, by becoming a **BSI Subscribing Member**.

PLUS is an updating service exclusive to BSI Subscribing Members. You will automatically receive the latest hard copy of your standards when they're revised or replaced.

To find out more about becoming a BSI Subscribing Member and the benefits of membership, please visit bsigroup.com/shop.

With a **Multi-User Network Licence (MUNL)** you are able to host standards publications on your intranet. Licences can cover as few or as many users as you wish. With updates supplied as soon as they're available, you can be sure your documentation is current. For further information, email bsmusales@bsigroup.com.

BSI Group Headquarters

389 Chiswick High Road London W4 4AL UK

Revisions

Our British Standards and other publications are updated by amendment or revision.

We continually improve the quality of our products and services to benefit your business. If you find an inaccuracy or ambiguity within a British Standard or other BSI publication please inform the Knowledge Centre.

Copyright

All the data, software and documentation set out in all British Standards and other BSI publications are the property of and copyrighted by BSI, or some person or entity that owns copyright in the information used (such as the international standardization bodies) and has formally licensed such information to BSI for commercial publication and use. Except as permitted under the Copyright, Designs and Patents Act 1988 no extract may be reproduced, stored in a retrieval system or transmitted in any form or by any means – electronic, photocopying, recording or otherwise – without prior written permission from BSI. Details and advice can be obtained from the Copyright & Licensing Department.

Useful Contacts:

Customer Services

Tel: +44 845 086 9001

Email (orders): orders@bsigroup.com

Email (enquiries): cservices@bsigroup.com

Subscriptions

Tel: +44 845 086 9001

Email: subscriptions@bsigroup.com

Knowledge Centre

Tel: +44 20 8996 7004

Email: knowledgecentre@bsigroup.com

Copyright & Licensing

Tel: +44 20 8996 7070

Email: copyright@bsigroup.com



...making excellence a habit.™