



Standard Specification for Panama Canal Pilot Platform¹

This standard is issued under the fixed designation F985; the number immediately following the designation indicates the year of original adoption or, in the case of revision, the year of last revision. A number in parentheses indicates the year of last reapproval. A superscript epsilon (ϵ) indicates an editorial change since the last revision or reapproval.

1. Scope

1.1 This specification provides design and construction details for Panama Canal pilot platforms.

1.2 Platforms shall be placed aboard the vessel in accordance with the requirements of the Panama Canal Commission and Title 35 of the Code of Federal Regulations.

1.3 The values stated in metric units are to be regarded as the standard.

2. Referenced Documents

2.1 *ASTM Standards*:²

B221 Specification for Aluminum and Aluminum-Alloy Extruded Bars, Rods, Wire, Profiles, and Tubes

2.2 *Federal Standard*:

Code of Federal Regulations, Title 35 Panama Canal Regulations (Parts 1 through 299)³

¹ This specification is under the jurisdiction of ASTM Committee F25 on Ships and Marine Technology and is the direct responsibility of Subcommittee F25.03 on Outfitting and Deck Machinery.

Current edition approved Oct. 1, 2012. Published October 2012. Originally approved in 1986. Last previous edition approved in 2006 as F985 – 00 (2006). DOI: 10.1520/F0985-00R12.

² For referenced ASTM standards, visit the ASTM website, www.astm.org, or contact ASTM Customer Service at service@astm.org. For *Annual Book of ASTM Standards* volume information, refer to the standard's Document Summary page on the ASTM website.

³ Available from U.S. Government Printing Office Superintendent of Documents, 732 N. Capitol St., NW, Mail Stop: SDE, Washington, DC 20401.

3. Ordering Information

3.1 Pilot platforms shall be ordered by this ASTM designation and year of issue.

3.2 Paint finish (if other than standard).

4. Materials and Methods

4.1 Platforms shall be welded-aluminum construction in accordance with Specification B221, Alloy 5086.

4.2 Decking shall be serrated-aluminum grating.

4.3 Canopy shall be of vinyl-nylon construction with sewn seams and metallic grommets.

4.4 Canopy tie-downs shall be 1/8-in. (DN 4-mm) nylon line.

4.5 Paint finish, if required, shall be in accordance with customer specifications.

5. Dimensions, Weight, and Permissible Variations

5.1 Dimensions as indicated in **Figs. 1-7**.

5.2 The approximate unit weight is 1250 N.

5.3 The construction tolerance is 4 mm, except bolt hole location 1 mm.

6. Workmanship, Finish, and Appearance

6.1 Shelters shall be free of weld splatter, sharp edges, and burrs injurious to personnel.

7. Keywords

7.1 Panama Canal; pilot platform

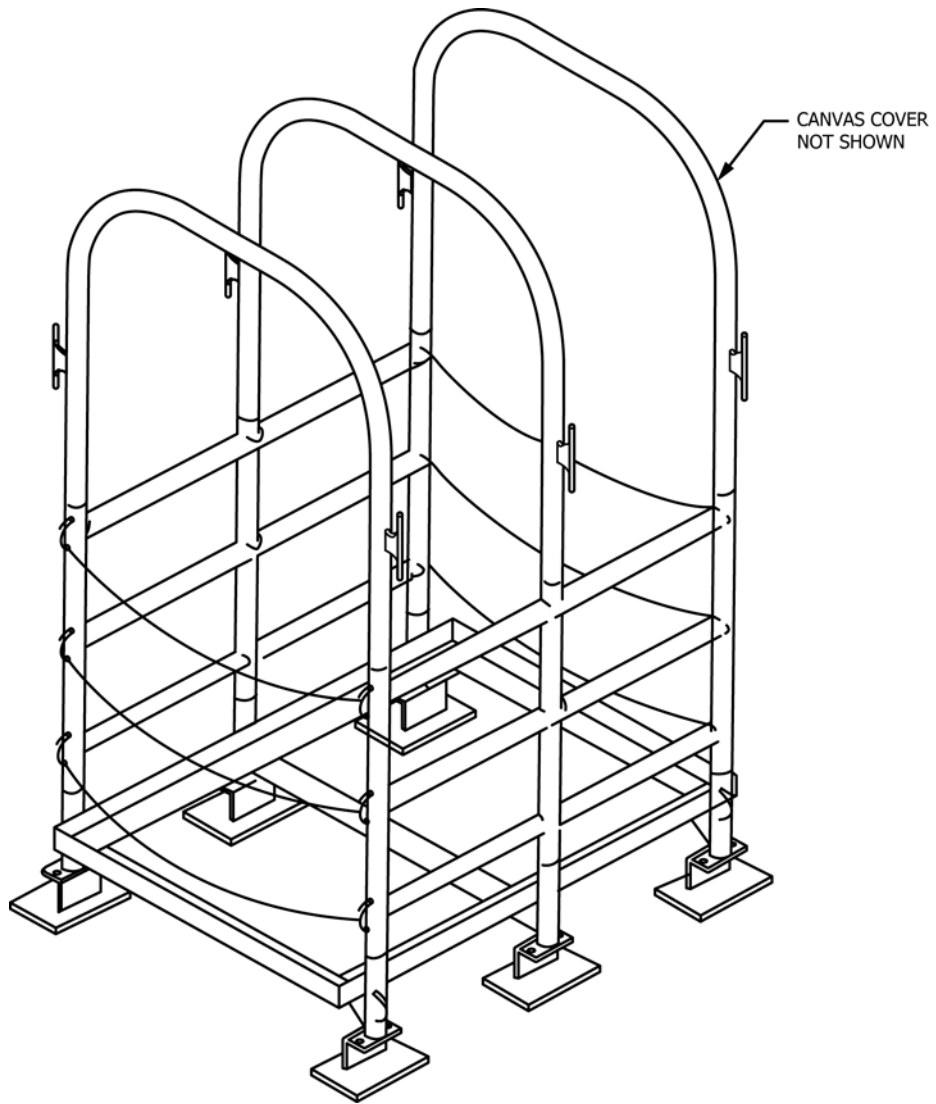
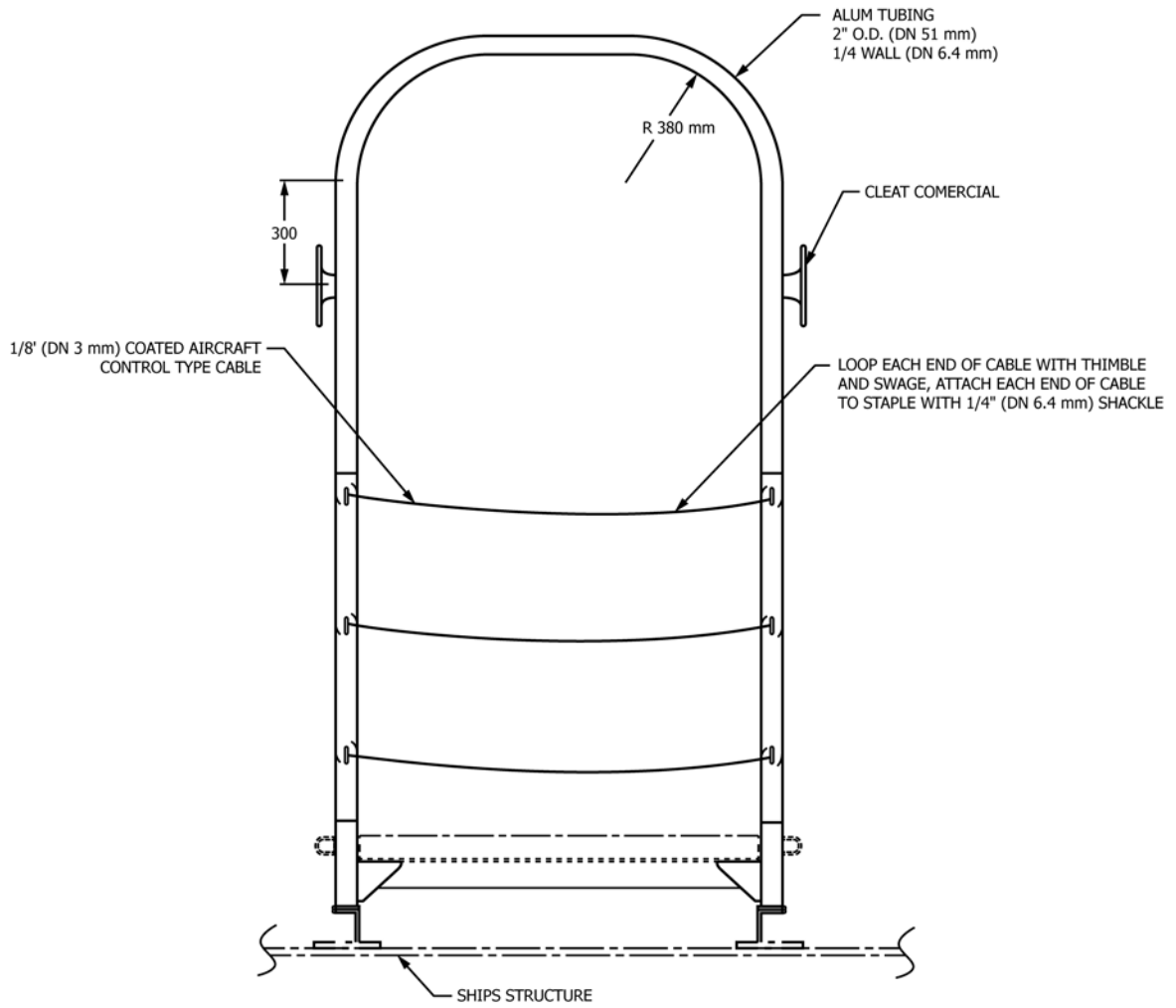


FIG. 1 Pilot Platform



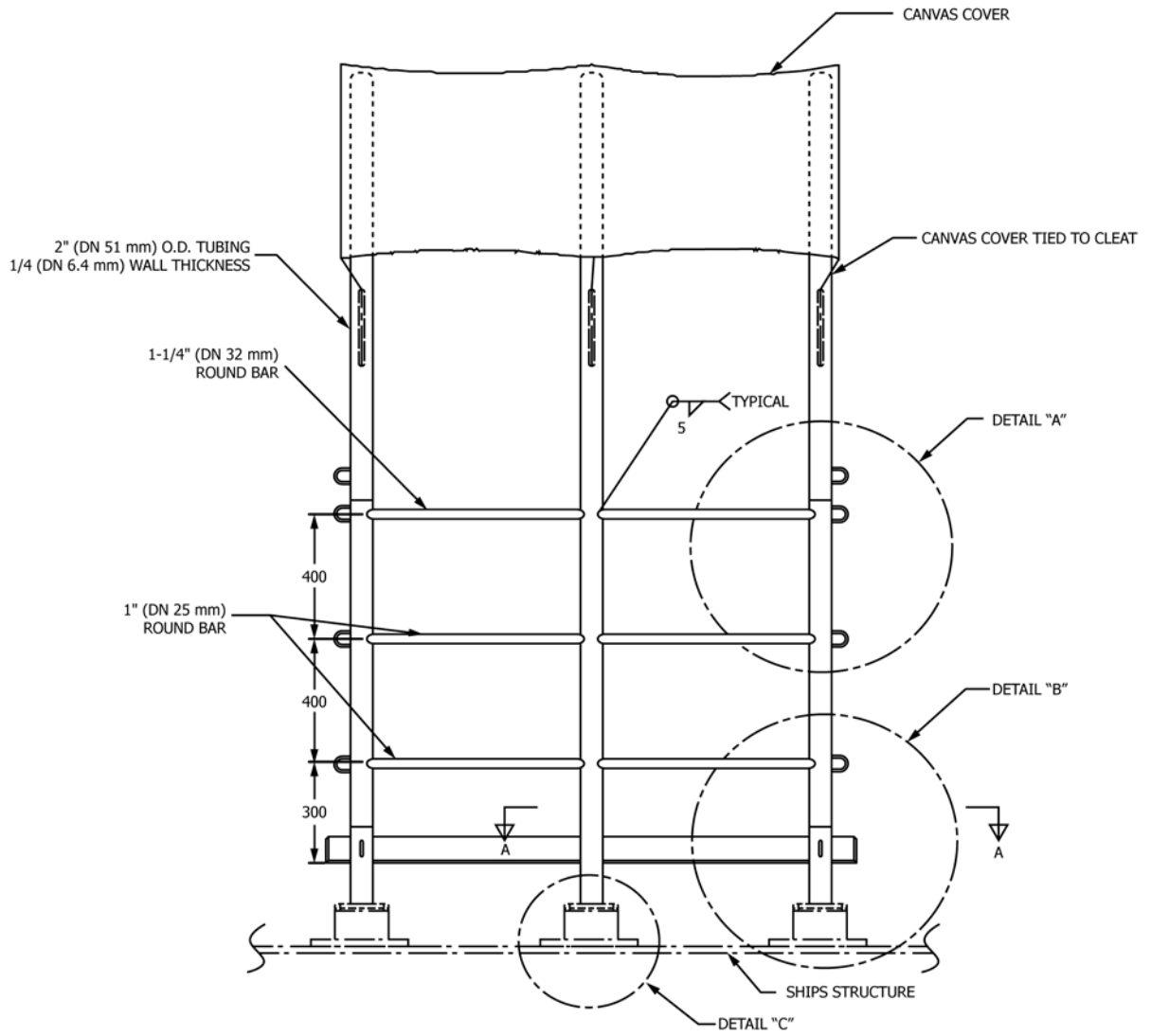


FIG. 3 Side View

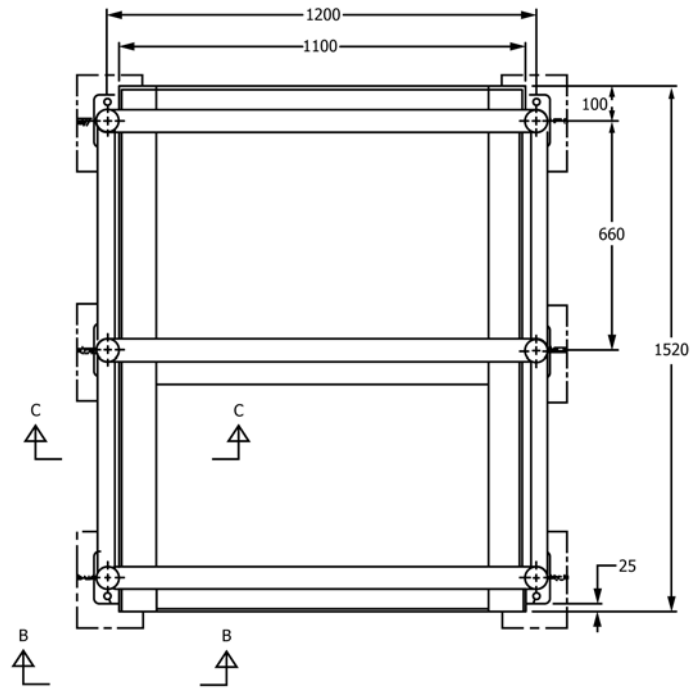
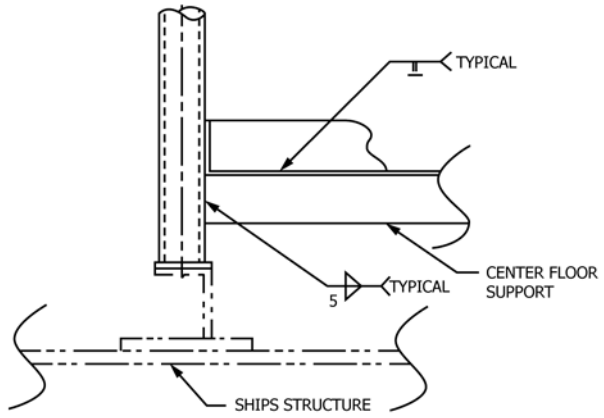
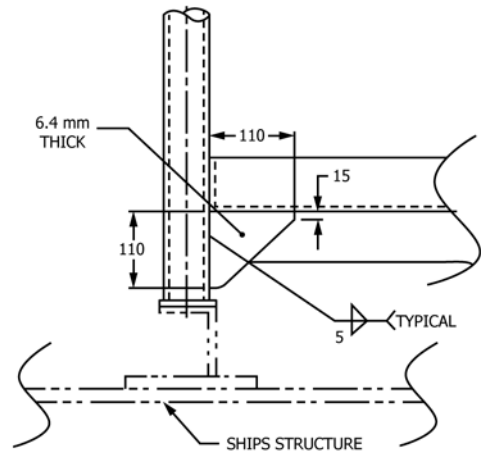


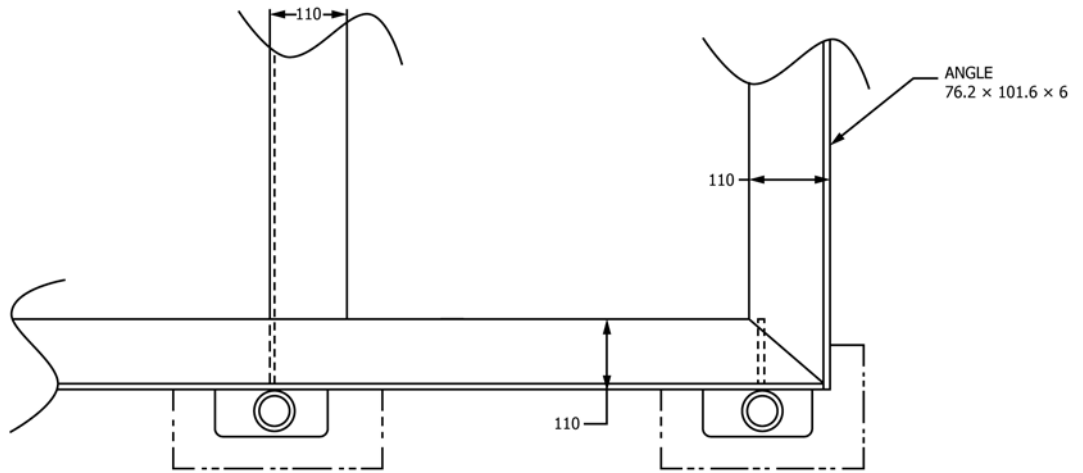
FIG. 4 Top View



SECTION "C-C"

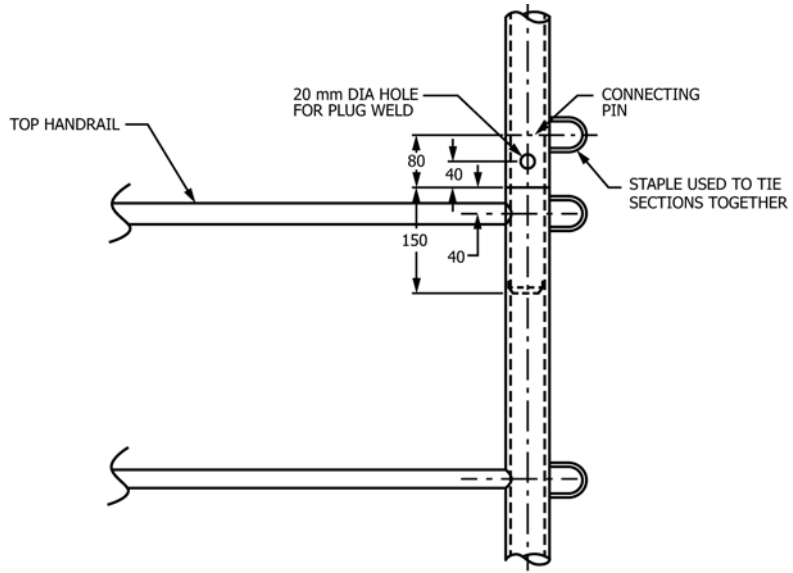


SECTION "B-B"

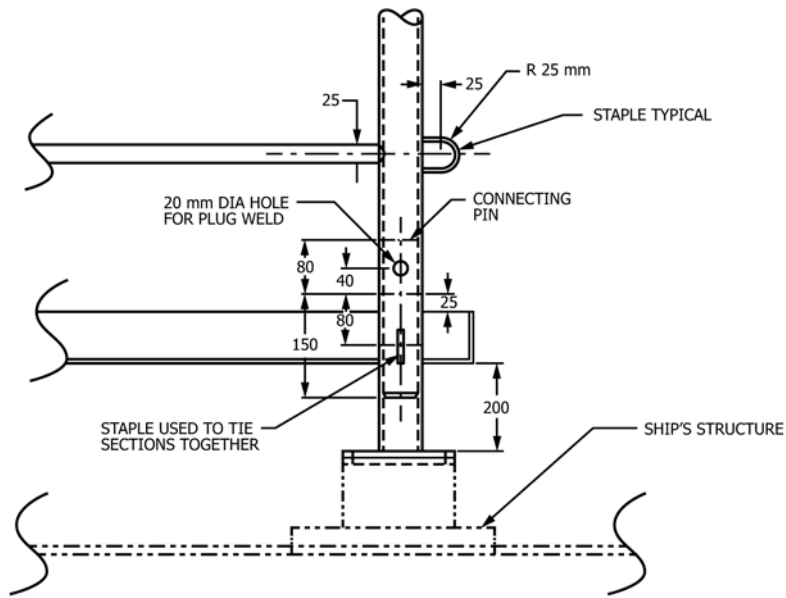


SECTION "A-A"

FIG. 5 Floor Details

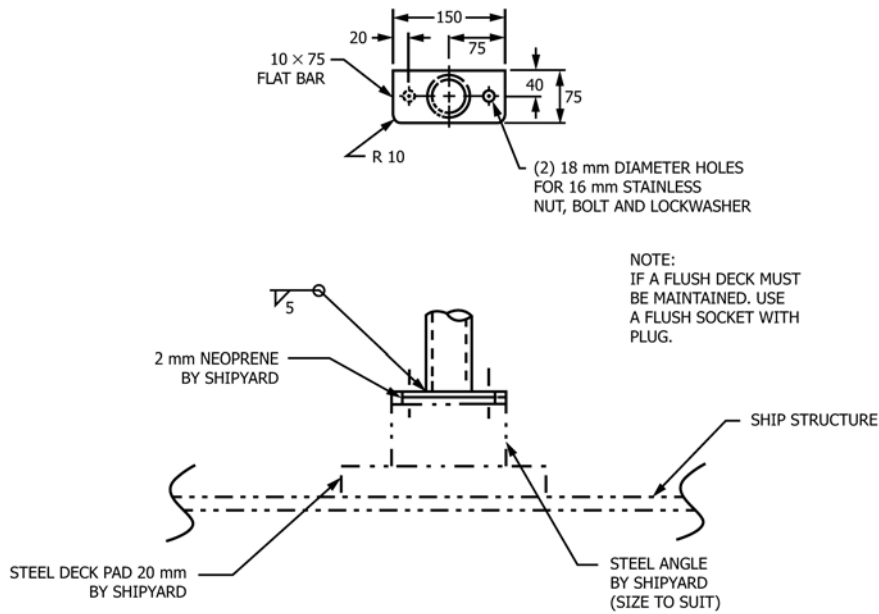


DETAIL "A"



DETAIL "B"

FIG. 6 Section Connecting Pins



DETAIL "C"

FIG. 7 Ship Attachment

ASTM International takes no position respecting the validity of any patent rights asserted in connection with any item mentioned in this standard. Users of this standard are expressly advised that determination of the validity of any such patent rights, and the risk of infringement of such rights, are entirely their own responsibility.

This standard is subject to revision at any time by the responsible technical committee and must be reviewed every five years and if not revised, either reapproved or withdrawn. Your comments are invited either for revision of this standard or for additional standards and should be addressed to ASTM International Headquarters. Your comments will receive careful consideration at a meeting of the responsible technical committee, which you may attend. If you feel that your comments have not received a fair hearing you should make your views known to the ASTM Committee on Standards, at the address shown below.

This standard is copyrighted by ASTM International, 100 Barr Harbor Drive, PO Box C700, West Conshohocken, PA 19428-2959, United States. Individual reprints (single or multiple copies) of this standard may be obtained by contacting ASTM at the above address or at 610-832-9585 (phone), 610-832-9555 (fax), or service@astm.org (e-mail); or through the ASTM website (www.astm.org). Permission rights to photocopy the standard may also be secured from the Copyright Clearance Center, 222 Rosewood Drive, Danvers, MA 01923, Tel: (978) 646-2600; http://www.copyright.com/