



Standard Specification for Envelope Dimensions for Bronze Globe Valves NPS ¼ to 2¹

This standard is issued under the fixed designation F885; the number immediately following the designation indicates the year of original adoption or, in the case of revision, the year of last revision. A number in parentheses indicates the year of last reapproval. A superscript epsilon (ϵ) indicates an editorial change since the last revision or reapproval.

1. Scope

1.1 This specification provides standard dimensions for small bronze globe valves (NPS ¼ to 2) installed in shipboard piping systems.

1.2 This specification covers valves of a nominal pipe size from NPS ¼ to 2 with threaded and brazed end connections. The valves are in accordance with MSS-SP80, Class 200.

1.3 *This international standard was developed in accordance with internationally recognized principles on standardization established in the Decision on Principles for the Development of International Standards, Guides and Recommendations issued by the World Trade Organization Technical Barriers to Trade (TBT) Committee.*

2. Referenced Documents

2.1 *ANSI Standard:*²

B2.1 Pipe Threads (Except Dryseal)

¹ This specification is under the jurisdiction of ASTM Committee F25 on Ships and Marine Technology and is the direct responsibility of Subcommittee F25.11 on Machinery and Piping Systems.

Current edition approved May 1, 2017. Published June 2017. Originally approved in 1984. Last previous edition approved in 2011 as F885 – 84 (2011). DOI: 10.1520/F0885-84R17.

² Available from American National Standards Institute (ANSI), 25 W. 43rd St., 4th Floor, New York, NY 10036, <http://www.ansi.org>.

2.2 *Manufacturer's Standardization Society of the Valve and Fittings Industry Standard:*³

SP80 Bronze Gate, Globe, Angle and Check Valves

3. Materials and Manufacture

3.1 Threaded end connections shall be in accordance with ANSI B2.1. Brazed end connections shall be in accordance with **Table 1**.

4. Dimensions

4.1 Valve dimensions for both threaded- and brazed-type end connections are provided in **Fig. 1**.

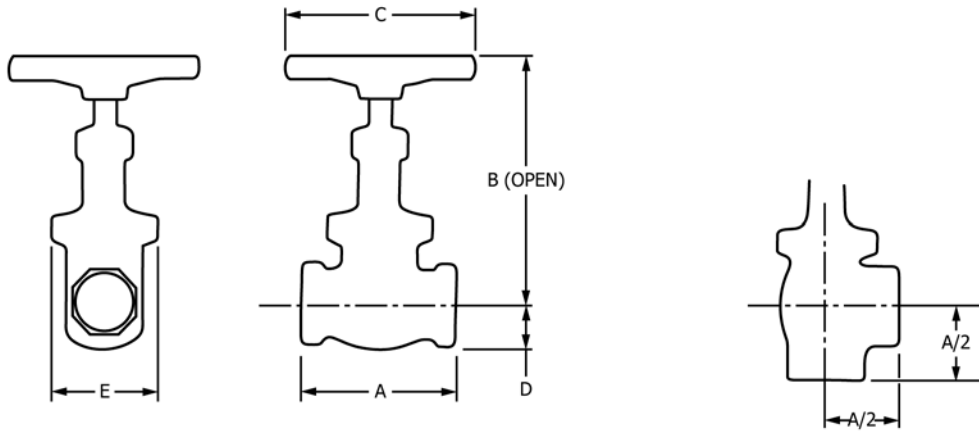
5. Tolerances

5.1 A plus or minus tolerance of 1/32 in. (0.8 mm) shall be allowed on all dimensions that do not have a maximum or minimum specified.

6. Keywords

6.1 brazed connection; bronze globe valve; envelope dimension; globe valve; marine technology; ship

³ Available from Manufacturers Standardization Society of the Valve and Fittings Industry (MSS), 127 Park St., NE, Vienna, VA 22180-4602, <http://www.mss-hq.org>.



Valve Size –NPS	A End to End, in. (mm)	B Pipe Centerline to Valve Top, Maximum, in. (mm)	C Maximum Handwheel Size, in. (mm)	D Pipe Centerline to Valve Bottom, Maximum, in. (mm)	E Maximum Width, in. (mm)	Nominal Weight, lb (kg)
1/4	2 1/4 (57)	4 5/8 (118)	2 1/2 (64)	3/4 (19)	1 1/2 (38)	1 (0.5)
3/8	2 1/4 (57)	4 5/8 (118)	2 1/2 (64)	3/4 (19)	1 1/2 (38)	1 (0.5)
1/2	2 1/2 (64)	5 1/4 (134)	3 1/4 (83)	7/8 (22)	2 (51)	1.5 (0.7)
3/4	3 1/8 (80)	6 1/8 (156)	4 1/2 (114)	1 (25)	2 1/2 (64)	2.5 (1.1)
1	3 3/4 (95)	7 7/16 (189)	4 1/2 (114)	1 1/4 (32)	2 3/4 (70)	4 (1.8)
1 1/4	4 1/4 (108)	8 (203)	5 3/8 (137)	1 1/2 (38)	3 1/4 (83)	6 (2.7)
1 1/2	4 3/4 (121)	8 5/8 (219)	5 3/8 (137)	1 3/4 (44)	3 3/4 (95)	7 (3.2)
2	5 3/4 (146)	10 1/8 (257)	5 3/4 (146)	2 (51)	4 3/4 (121)	12 (5.5)

FIG. 1 Envelope Dimensions—Thread and Braze End Connections

TABLE 1 Brazed End Connection Dimensions

Valve Size – NPS	Depth of Socket, in. (mm)	Diameter of Socket, in. (mm)	
		Minimum	Maximum
1/4	1 7/64 (7)	0.540 (13.72)	0.543 (13.79)
3/8	5/16 (8)	0.675 (17.15)	0.678 (17.22)
1/2	3/8 (10)	0.840 (21.34)	0.843 (21.41)
3/4	13/32 (10)	1.050 (26.67)	1.053 (26.74)
1	7/16 (11)	1.315 (33.40)	1.318 (33.48)
1 1/4	1/2 (13)	1.660 (42.16)	1.663 (42.24)
1 1/2	5/8 (16)	1.900 (48.26)	1.905 (48.39)
2	2 1/32 (17)	2.375 (60.33)	2.380 (60.45)

SUPPLEMENTARY REQUIREMENTS

The following supplementary requirements shall apply only when specified by the purchaser in the inquiry, contract, or order.⁴


⁴ The Supplementary Requirements shall be deleted two years from the approved date of the current edition of this specification.

S1. Permissible Variations

S1.1 The permissible variations in Dimension A of Fig. 1 are shown in Table S1.1. The permissible variations in the centerline to end dimensions for angle valves shall be one half the values specified in Table S1.1. The tolerance specified in 5.1 may be added to or deducted from Dimension ‘A’ after the permissible variation is applied.

TABLE S1.1 Permissible Variation in Dimension ‘A’

Valve Size – NPS	Variation, in. (mm)
1/4 – 3/4	± 3/8 (10)
1 – 1 1/4	± 7/16 (11)
1 1/2	± 9/16 (14)
2	± 3/4 (19)

 **F885 – 84 (2017)**

ASTM International takes no position respecting the validity of any patent rights asserted in connection with any item mentioned in this standard. Users of this standard are expressly advised that determination of the validity of any such patent rights, and the risk of infringement of such rights, are entirely their own responsibility.

This standard is subject to revision at any time by the responsible technical committee and must be reviewed every five years and if not revised, either reapproved or withdrawn. Your comments are invited either for revision of this standard or for additional standards and should be addressed to ASTM International Headquarters. Your comments will receive careful consideration at a meeting of the responsible technical committee, which you may attend. If you feel that your comments have not received a fair hearing you should make your views known to the ASTM Committee on Standards, at the address shown below.

This standard is copyrighted by ASTM International, 100 Barr Harbor Drive, PO Box C700, West Conshohocken, PA 19428-2959, United States. Individual reprints (single or multiple copies) of this standard may be obtained by contacting ASTM at the above address or at 610-832-9585 (phone), 610-832-9555 (fax), or service@astm.org (e-mail); or through the ASTM website (www.astm.org). Permission rights to photocopy the standard may also be secured from the Copyright Clearance Center, 222 Rosewood Drive, Danvers, MA 01923, Tel: (978) 646-2600; <http://www.copyright.com/>