



Standard Test Method for Torsion Characteristic of Alpine Skis¹

This standard is issued under the fixed designation F779; the number immediately following the designation indicates the year of original adoption or, in the case of revision, the year of last revision. A number in parentheses indicates the year of last reappraisal. A superscript epsilon (ϵ) indicates an editorial change since the last revision or reappraisal.

1. Scope

1.1 This test method covers the measurement of ski forebody torsion and ski afterbody torsion of adult Alpine skis.

1.2 No limitation to ski size is proposed. This test method is applicable to all Alpine skis.

1.3 *This standard does not purport to address all of the safety concerns, if any, associated with its use. It is the responsibility of the user of this standard to establish appropriate safety and health practices and determine the applicability of regulatory limitations prior to use.*

2. Terminology

2.1 *Definitions of Terms Specific to This Standard:*

2.1.1 *afterbody torsion angle*, θ_A —that angle, in degrees, to which the running surface is rotated at Point *A* when a moment, M_t , is applied at Point *A* as shown in Fig. 1.

2.1.2 *afterbody torsional spring constant*, C_A —the moment per degree of rotation of the ski afterbody when the ski is clamped in accordance with Fig. 1 and the moment applied in accordance with Fig. 2.

$$C_A (\text{N}\cdot\text{m}/\text{deg}) = \frac{M_t}{\theta_A}$$

2.1.3 *forebody torsion angle*, θ_F —that angle, in degrees, to which the running surface is rotated at Point *F* when a moment, M_t , is applied at Point *F* as shown in Fig. 1.

2.1.4 *forebody torsional spring constant*, C_{TS} —the moment per degree of rotation of the ski forebody when the ski is clamped in accordance with Fig. 1 and the moment applied in accordance with Fig. 2.

$$C_F (\text{N}\cdot\text{m}/\text{deg}) = \frac{M_t}{\theta_F}$$

2.1.5 *moment of torsion*, M_t —the moment in newton-metres applied to rotate the ski about its longitudinal axis when the ski is clamped according to Fig. 1 and the moment is applied according to Fig. 2.

¹ This test method is under the jurisdiction of ASTM Committee F27 on Snow Skiing and is the direct responsibility of F27.30 on Skis and Boots.

Current edition approved March 1, 2012. Published March 2012. Originally approved in 1982. Last previous edition approved in 2006 as F779 – 93 (2006). DOI: 10.1520/F0779-12.

3. Significance and Use

3.1 This test method provides a means for determining the torsional stiffness of Alpine skis. It is not intended to evaluate the data with regard to the quality of the ski.

4. Apparatus

4.1 *Clamping Fixture*, to grip the ski as a vise with a flat, rigid jaw and three clamps with at least 150 +50, –0 mm spacing between them. One clamp is located at each end of the fixture and one in the center as illustrated in Fig. 1. The clamps should be at least 30 mm wide and cover the full width of the ski.

4.2 *Torsion Head*, shown in Fig. 2, with low-friction moment (≤ 0.2 N·m) and quasistatic loading system having a clamping fixture described in 4.1. Common devices for this loading system are a weight on a cable wrapped around the head, or a weight on a lever arm rigidly attached to the head. The torsion head clamping fixture should have a width of 10 ± 1 mm and a length equal to or greater than the width of the ski. The base surface of the torsion head fixture to the ski base should be in the same plane as the clamping fixture (that is, camber forced out of ski in clamped position).

4.3 *Scale*, to measure the torsion angle with an accuracy of 0.5° .

5. Procedure

5.1 Test skis at room temperature ($23 \pm 5^\circ\text{C}$) without specific preconditioning. Torsion head and clamping fixture are adjusted such that the distance between them is $C/2 \pm 2$ mm shown in Fig. 1. If the ski geometry does not allow point *A* or point *F*, or both, to be used as shown in Fig. 1, move the location of point *A* or point *F*, or both, toward the center of the ski; points *A* and *F* should be moved the minimum distance necessary. Mount the ski to the clamping fixture so that the ski forebody or ski afterbody can rotate freely about Point *M*. The torsion head is attached to the ski at Point *A* or *F* ± 2 mm such that the longitudinal axis of the ski is in the center of the torsion head. Apply a moment, M_t , of 20 ± 0.2 N·m. (The moment should be applied quasistatically.) The torsion angle must be read within 2 to 5 s after the torsion moment, M_t , is initially applied.

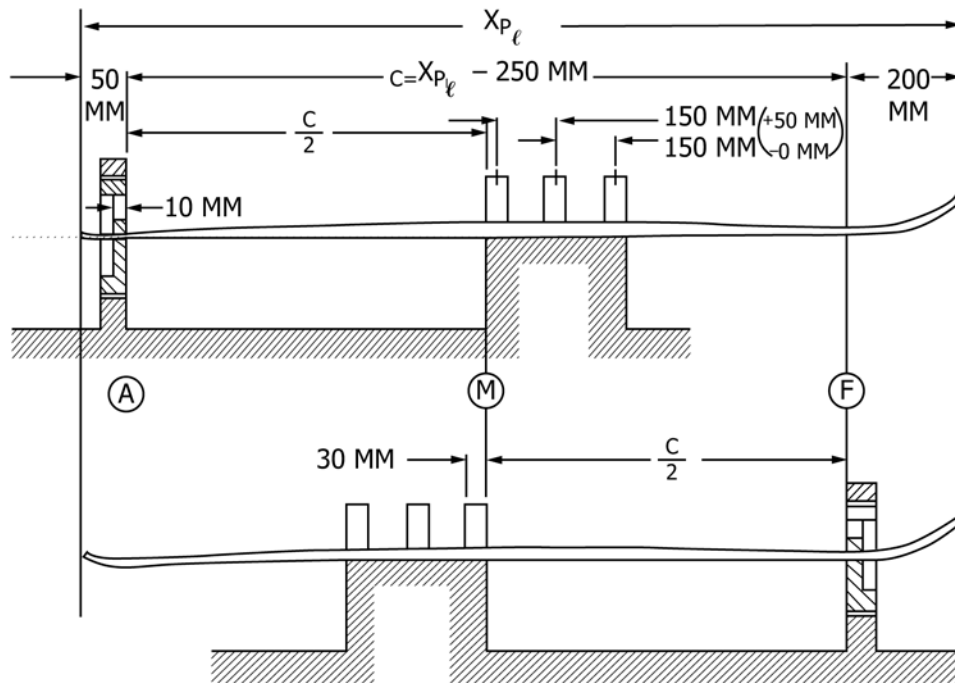


FIG. 1 Clamping Fixture

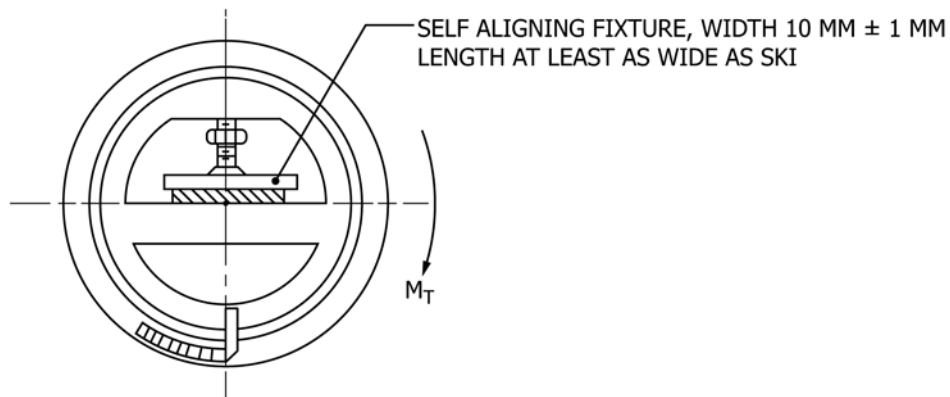


FIG. 2 Torsion Head Fixture

6. Calculation

6.1 Calculate the afterbody torsional spring constant, C_A , in newton-metres per degree, in accordance with the following equation:

$$C_A = \frac{M_t}{\theta_A} \quad (1)$$

6.2 Calculate the forebody torsional spring constant, C_F , in newton-metres per degree, in accordance with the following equation:

$$C_F = \frac{M_t}{\theta_B} \quad (2)$$

7. Report

- 7.1 Report the following information:
 - 7.1.1 ASTM F779,

- 7.1.2 Brand, model designation, manufacturer’s registration number, size of ski, and the locations of points *A* and *F* relative to the tip and tail of the ski, respectively,

- 7.1.3 Afterbody torsional spring constant, forebody torsional spring constant, and

- 7.1.4 Any deviations from this standard with explanations.

8. Precision and Bias

8.1 *Precision*—The precision of this test method is currently being determined.

8.2 *Bias*—The procedure in this test method has no bias because the values for torsion characteristics of Alpine skis are defined only in terms of the test method.

9. Keywords

- 9.1 Alpine skis; torsion characteristics

ASTM International takes no position respecting the validity of any patent rights asserted in connection with any item mentioned in this standard. Users of this standard are expressly advised that determination of the validity of any such patent rights, and the risk of infringement of such rights, are entirely their own responsibility.

This standard is subject to revision at any time by the responsible technical committee and must be reviewed every five years and if not revised, either reapproved or withdrawn. Your comments are invited either for revision of this standard or for additional standards and should be addressed to ASTM International Headquarters. Your comments will receive careful consideration at a meeting of the responsible technical committee, which you may attend. If you feel that your comments have not received a fair hearing you should make your views known to the ASTM Committee on Standards, at the address shown below.

This standard is copyrighted by ASTM International, 100 Barr Harbor Drive, PO Box C700, West Conshohocken, PA 19428-2959, United States. Individual reprints (single or multiple copies) of this standard may be obtained by contacting ASTM at the above address or at 610-832-9585 (phone), 610-832-9555 (fax), or service@astm.org (e-mail); or through the ASTM website (www.astm.org). Permission rights to photocopy the standard may also be secured from the Copyright Clearance Center, 222 Rosewood Drive, Danvers, MA 01923, Tel: (978) 646-2600; <http://www.copyright.com/>