



Standard Specification for Motorized Treadmills¹

This standard is issued under the fixed designation F2115; the number immediately following the designation indicates the year of original adoption or, in the case of revision, the year of last revision. A number in parentheses indicates the year of last reapproval. A superscript epsilon (ϵ) indicates an editorial change since the last revision or reapproval.

INTRODUCTION

The goal of this specification is to promote proper mechanical design and manufacturing practices for motorized treadmills. Through these practices, this specification aims to assist designers and manufacturers in producing functional, safe machines under proper operational conditions. The equipment user must recognize, however, that a standard alone will not necessarily prevent injuries. Like other physical activities, exercise involving treadmills involves the risk of injury, particularly if the equipment is used improperly. The designers and manufacturers of treadmills should also consider other standards including, but not limited to, those listed below. This specification does not apply to treadmills designed for underwater use.

1. Scope

1.1 This specification covers the establishment of parameters for the design and manufacture of motorized treadmills.

1.2 It is intent of this specification to specify products for use by individuals age 13 and above.

1.3 This standard is to be used in conjunction with Specification F2276, Test Methods F2571, and Test Methods F2106.

1.4 This standard takes precedence over Specification F2276 and Test Methods F2571 in areas that are specific to motorized treadmills.

1.5 The values stated in SI units are to be regarded as the standard. The values given in parentheses are for information only.

1.6 *This standard does not purport to address all of the safety concerns, if any, associated with its use. It is the responsibility of the user of this standard to establish appropriate safety and health practices and determine the applicability of regulatory limitations prior to use.*

2. Referenced Documents

2.1 ASTM Standards:²

¹ This specification is under the jurisdiction of ASTM Committee F08 on Sports Equipment, Playing Surfaces, and Facilities and is the direct responsibility of Subcommittee F08.30 on Fitness Products.

Current edition approved March 1, 2012. Published April 2012. Originally approved in 2001. Last previous edition approved in 2005 as F2115 – 05. DOI: 10.1520/F2115-12.

² For referenced ASTM standards, visit the ASTM website, www.astm.org, or contact ASTM Customer Service at service@astm.org. For *Annual Book of ASTM Standards* volume information, refer to the standard's Document Summary page on the ASTM website.

F1749 Specification for Fitness Equipment and Fitness Facility Safety Signage and Labels

F2106 Test Methods for Evaluating Design and Performance Characteristics of Motorized Treadmills

F2276 Specification for Fitness Equipment

F2571 Test Methods for Evaluating Design and Performance Characteristics of Fitness Equipment

2.2 *UL Standards:*³

UL 1647 Motor Operated Massage and Exercise Machines

3. Terminology

3.1 The terms listed below are unique to this specification. For terms not defined below, refer to Specification F2276.

3.2 For treadmill terminology, see Fig. 1.

3.3 *Definitions:*

3.3.1 *adjustable incline system, n*—components that allow the user to vary the angle of the moving surface relative to the floor.

3.3.2 *catch point, n*—location at which edges, protrusions, or surfaces allow a body part to become injured or clothing to be damaged.

3.3.3 *control panel, n*—machine/user interface device for controlling the operation of or displaying information about the operational state of the treadmill.

3.3.4 *cycle, n*—refers to one application of load to specifications required in the standard followed by removal of that load.

3.3.5 *deck, n*—component that supports the moving surface.

³ Available from Underwriters Laboratories (UL), Corporate Progress, 333 Pfingsten Rd., Northbrook, IL 60062.

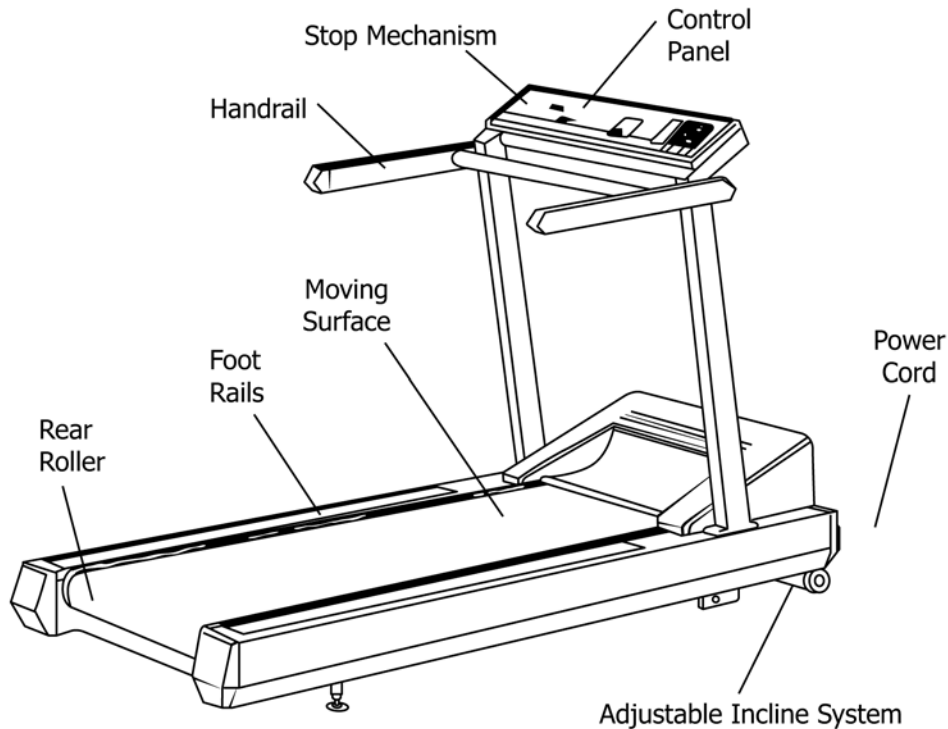


FIG. 1 Treadmill Terminology

3.3.6 *folding treadmill*, *n*—treadmill that is designed with some components that can be moved to allow a more compact, nonusable storage position.

3.3.7 *foot rail*, *n*—area beside the moving surface intended for the user to stand on when mounting or dismounting or during a pause.

3.3.8 *handrail*, *n*—the means that are provided for a user to enhance balance and stability by partially or totally supporting the user’s weight with the user’s arms.

3.3.9 *motorized drive*, *n*—system that causes motion in the moving surface—utilizing a power source other than the user.

3.3.10 *moving surface*, *n*—component(s) on which the user walks or runs.

3.3.11 *roller*, *n*—cylindrical component of the treadmill used to tension or support the moving surface.

3.3.12 *steady state unloaded condition*, *n*—operational state of the treadmill in which no user or other externally applied load has been applied to the treadmill and the moving surface speed has been allowed to stabilize as commanded by the user interface.

3.3.13 *stop mechanism*, *n*—device on the treadmill that, when actuated, removes power from the system that drives the moving surface or initiates a controlled stop.

3.3.14 *treadmill*, *n*—motorized stationary exercise device that allows the user to walk, jog, or run by means of traversing a continuous moving surface.

3.3.15 *usable moving surface*, *n*—area of the moving surface that is clear of any obstructions that would impede normal foot motion including the portion of the stride prior to initial foot fall and therefore accessible for normal use.

3.3.15.1 *Discussion*—Where no obstructions exist, the tangency point of the roller and the belt is considered the end of the usable surface.

3.3.16 *user support means*, *n*—see *handrail*.

4. Design Requirements

4.1 *Stability*—The treadmill shall be stable during intended use. It should be noted that treadmills have unique stability issues beyond those specified in Specification F2276. Refer to Test Methods F2106 for testing guidelines.

4.2 Exterior Design:

4.2.1 The rear roller of the treadmill shall be designed or guarded to reduce the risk of finger entrapment. The guard or design shall function through the full range of inclination possible and through the full range of belt tension adjustment. The guard configurations shown in Fig. 2 are suggestions that may reduce the risks associated with this area. Fig. 2 assumes that the treadmill is maintained and adjusted per manufacturer’s recommendations.

4.2.1.1 The intention of Fig. 2 is to show some possible alternatives that have been used previously on treadmills to guard the rear roller area. This figure is not intended to limit alternatives that may more effectively address the hazard that is present at the rear roller. The function of the guard is to minimize the possibility of finger entrapment between the roller and the moving surface and between the frame and the end of the roller without introducing an undo tripping hazard to the user of the treadmill.

4.2.2 Electrical elements shall be guarded so as to meet or exceed UL 1647.

4.2.3 All treadmills shall be equipped with foot rails to facilitate user mounting and dismounting.

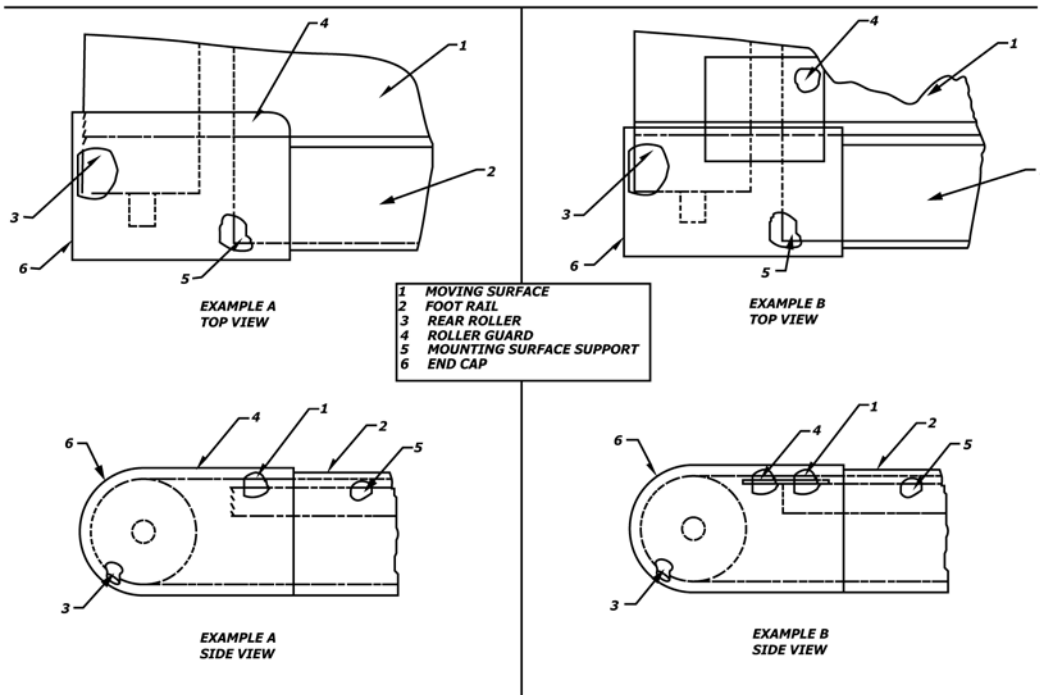


FIG. 2 Examples of Rear Roller Guarding

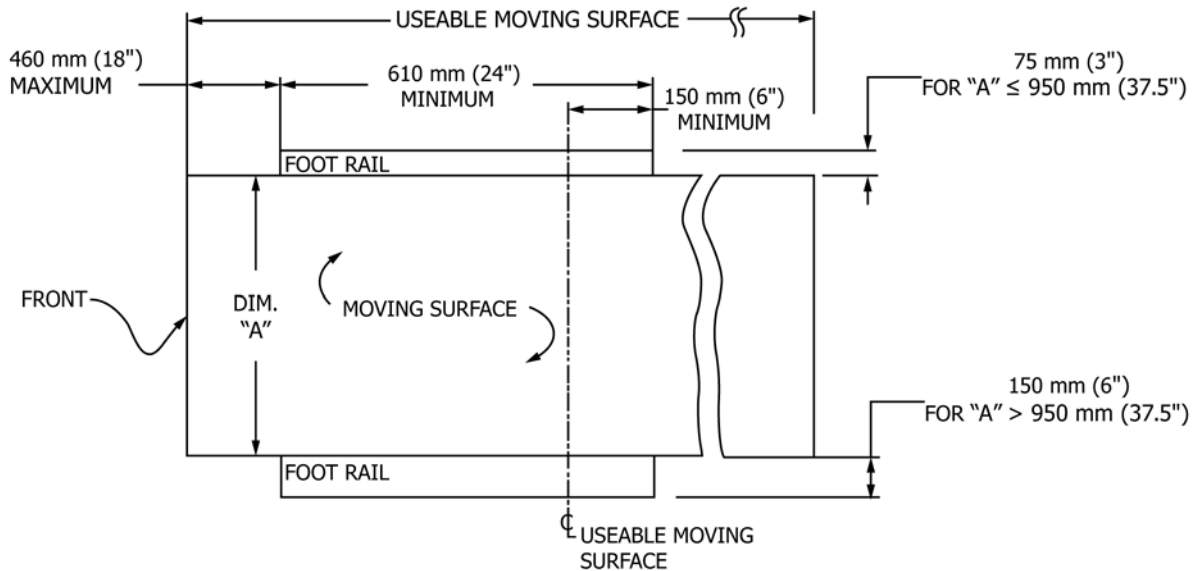


FIG. 3 Top View of Required Foot Rail Dimensions

4.2.3.1 Foot rails shall be a minimum of 610 mm (24 in.) long and adjacent to the moving surface. They shall cover, as a minimum, from within 460 mm (18 in.) of the forward edge of the usable moving surface and at least 150 mm (6 in.) beyond the center of the usable moving surface. See Fig. 3.

4.2.3.2 For foot rail lateral spacing of 950 mm (37.5 in.) or less, the minimum foot rail surface width dimension shall be 75 mm (3 in.). For foot rails spaced greater than 950 mm (37.5 in.), the minimum foot rail surface width dimension shall be 150 mm (6 in.). See Fig. 3.

4.2.4 *Moving Surface:*

4.2.4.1 The moving surface shall be constructed to minimize foot slippage.

4.2.4.2 On institutional treadmills, visual movement markings shall be provided on the moving surface. These markings shall be permanently affixed to, or be part of, the moving surface. These markings shall be of a contrasting color to the rest of the moving surface. A portion of these markings shall always be visible when the moving surface is in operation. The markings shall be a minimum width of 50 mm (1.97 in.) by a minimum 150 mm (5.90 in.) in length. Between two markings a minimum space the size of one marking shall be provided.

4.2.4.3 The minimum dimensions of the usable moving surface shall meet the following requirements.

For institutional treadmills:

Maximum Speed	Minimum Width	Minimum Length
0 to 9.7 kph (0 to 6 mph)	400 mm (15.75 in.)	815 mm (32 in.)
>9.7 to 13 kph (>6 to 8 mph)	400 mm (15.75 in.)	965 mm (38 in.)
>13 to 16 kph (>8 to 10 mph)	400 mm (15.75 in.)	1090 mm (43 in.)
>16 kph (>10 mph)	400 mm (15.75 in.)	1270 mm (50 in.)

For consumer treadmills:

Maximum Speed	Minimum Width	Minimum Length
0 to 9.7 kph (0 to 6 mph)	325 mm (12.75 in.)	815 mm (32 in.)
>9.7 to 13 kph (>6 to 8 mph)	350 mm (13.75 in.)	965 mm (38 in.)
>13 to 16 kph (>8 to 10 mph)	350 mm (13.75 in.)	1090 mm (43 in.)
>16 kph (>10 mph)	400 mm (15.75 in.)	1270 mm (50 in.)

4.2.5 All treadmills shall be equipped with a handrail for user support during use and to assist in dismount. The handrail shall have a total grip length of at least 405 mm (16 in.), and at least one segment shall be a minimum of 200 mm (8 in.) long.

4.2.5.1 If the treadmill is not equipped with a front handrail, side handrails shall be included on both sides and have a maximum width of 965 mm (38 in.) measured centerline to centerline.

4.2.5.2 All handrails shall be a minimum of 800 mm (31.5 in.) and a maximum of 1170 mm (46 in.) above the moving surface.

4.3 Endurance Loading:

4.3.1 Treadmills shall function per manufacturer's specifications after enduring a minimum of 375 000 cycles (= 2 cycles/s × 3600 s/h × 1 h usage/week × 52 weeks) at a load equal to 1.5 times maximum specified user weight for consumer treadmills or 2 620 000 cycles (= 2 cycles/s × 3600 s/h × 7 h/week usage × 52 weeks) at a load equal to 1.5 times maximum specified user weight for institutional treadmills applied to the stationary moving surface.

4.3.2 Switches and switch actuation mechanisms for controlling the stop, pause, or end functions shall function properly as follows:

4.3.2.1 *Consumer Treadmills*—3 times/h × 5 h/week × 52 weeks/year × a safety factor of 2 = 1560 actuations.

4.3.2.2 *Institutional Treadmills*—3 times/h × 50 h/week × 52 weeks/year × 3 years × a safety factor of 2 = 46 800 actuations.

4.4 Static Loading:

4.4.1 The moving surface and deck (if present) shall withstand a load equal to 4 times maximum specified user weight for institutional treadmills and 2.5 times maximum specified user weight for consumer treadmills without breakage. The foot rails shall withstand a load equal to 2 times the maximum specified user weight without breakage.

4.4.2 The handrails shall meet the loading parameters defined for handlebars in Specification [F2276](#).

4.5 *Adjustable Incline System*—The adjustable incline system, if the treadmill is so equipped, shall not move in excess of 25 mm/s (1 in./s) measured at any pinch or shear point created by the movement of the incline system.

4.6 Control Panel:

4.6.1 The control panel for the operation of the treadmill shall be readily accessible by the user.

4.6.2 The controls for a motorized treadmill shall incorporate a prominently labeled and user accessible stop switch that is red in color. The stop switch causes the moving surface to decelerate and stop and stops the motion of any power-driven incline system. Stop mechanisms may include a push-button stop switch, a pull cord stop switch, an infrared beam switch, or other suitable means.

4.6.3 If the motorized treadmill is equipped with a speed display, it shall reflect the true moving surface speed to within ±1.6 kph (1.0 mph) while in a steady state unloaded condition.

4.7 Motorized Drive System:

4.7.1 The initial starting speed of the moving surface shall not exceed 2.4 kph (1.5 mph). The acceleration of the moving surface, with the treadmill in an unloaded condition, shall not exceed 3.2 kph/s (2.0 mph/s).

4.7.2 The maximum deceleration shall not exceed 9.7 kph/s (6.0 mph/s) with the treadmill stopping with a load equivalent to a 90 kg (200 lb) or maximum specified user weight, whichever is less. This maximum deceleration rate shall apply on activation of the stop switch or removal of power by any means.

4.7.3 Treadmills shall be equipped with an immobilization method to prevent unauthorized operation by third parties. Examples of acceptable means include, but are not limited to, key, pull-out switch, combination lock, a power cord that is removable from the treadmill, or by software disabling.

4.8 *Folding Treadmills*—Treadmills that fold into a storing position may have the moving surface fold up or the handrail/console assembly fold down.

4.8.1 The upright/handrail structure of folding treadmills shall be sufficiently stable such that it will not fold down with a load of 180 N (40 lb) applied horizontally to the topmost handrail position.

4.8.2 Folding treadmills shall be equipped with a locking system to keep the treadmill in a folded position when intended to be stored.

4.8.3 For treadmills which have a deck and moving surface that fold up for storage the treadmill shall be equipped with a locking mechanism to secure the deck and moving surface in the storage position. For treadmills that have uprights and handrails that fold down for storage, the treadmill shall be equipped with a locking mechanism that secures the handrails and uprights in the use position.

4.8.4 The folding portion of the treadmill shall not reach its equilibrium or balance position before being locked.

5. Warnings/Warning Labels

5.1 Adequate warnings alerting users, third parties, and service personnel to hazards associated with treadmills shall be provided.

5.2 These warnings labels shall be designed in accordance with Specification [F1749](#).

5.3 *General Warning Label*—The general warning label for treadmills shall be permanently affixed to the machine in an area encountered by the user prior to each use of the machine.

The general warning label must meet the requirements of Specification **F1749** as a minimum and include the following.

5.3.1 Since reading and understanding all warnings and instructions contained in the owner's manual is essential to safe operation, consumer treadmills shall be labeled with a statement advising the user to obtain, read, and understand the owner's manual prior to use.

5.4 Site-specific labels shall follow guidelines set forth in Specification **F1749**.

6. Documentation

6.1 *Owner's/User's Manuals*—Every treadmill shall be accompanied by an owner's/user's manual.

6.1.1 The first topic in these manuals will be a comprehensive listing of safety precautions. Illustrations shall be incorporated to assist in the user's understanding of any procedures not readily describable with text.

6.1.2 The warnings in the manual shall include as a minimum the following:

6.1.2.1 Obtain a medical exam before beginning any exercise program. If at any time during exercise you feel faint, dizzy, or experience pain, stop and consult your physician.

6.1.2.2 Keep children away.

6.1.2.3 If the treadmill is intended for consumer use only, the manual shall state so.

6.1.2.4 Read, understand, and carefully follow all warnings, instructions, and procedures on the treadmill and in the owners/users manual before using the treadmill.

6.1.2.5 Inspect the treadmill for incorrect, worn, or loose components and then correct, replace, or tighten prior to use.

6.1.2.6 Do not wear loose or dangling clothing while using the treadmill.

6.1.2.7 Care should be used when mounting or dismounting the treadmill.

6.1.2.8 Disconnect all power before servicing the treadmill.

6.1.2.9 Read, understand, and test the emergency stop procedures before use.

6.1.2.10 Do not operate electrically powered treadmills in damp or wet locations.

6.1.2.11 The recommended minimum clearance required around each treadmill for access to, passage around, and emergency dismount shall be stated. The minimum dimensions are to be: 0.5 m (19.7 in.) on each side of the treadmill, and 2 m (78 in.) behind the machine.

6.1.2.12 A review of all warning labels and how to obtain replacements shall be explained.

6.1.2.13 Requirements to keep the top side of the moving surface clean and dry.

6.1.2.14 Do not exceed maximum specified user weight. Manufacturer to state value of maximum user weight in this warning.

6.1.3 A parts list and descriptions or, if illustrated, a parts list with key numbers, shall be provided to assist in part identification.

6.2 *Assembly Instructions*—If the treadmill requires assembly, the assembly instructions or owner's/user's manual or both shall provide the following information.

6.2.1 The first section in the assembly instructions shall be a listing of all warnings related to correct and safe assembly of the treadmill.

6.2.2 A review of all warning labels that relate to correct and safe assembly and how to obtain replacements shall be provided.

6.2.3 The information shall include clear, detailed assembly instructions.

6.2.4 A list of tools required for assembly of the treadmill, even if the manufacturer supplies the tools.

6.2.5 The requirement that a complete visual inspection, and test of the features and functions of the assembled treadmill be made prior to use.

6.3 *Maintenance Instructions*—If the treadmill requires user maintenance, the maintenance instructions or owner's/user's manual or both shall provide clear, detailed instructions and shall include the following.

6.3.1 The first section of the maintenance instructions shall be a listing of all warnings related to correct and safe performance of the maintenance procedures.

6.3.2 A review of all warning labels that relate to correct and safe maintenance of the treadmill and how to obtain replacements.

6.3.3 The safety and integrity designed into the machine can only be maintained when the treadmill is regularly examined for damage and repaired. It is the sole responsibility of the user/owner or facility operator to ensure that regular maintenance is performed. Worn or damaged components shall be replaced immediately or the treadmill removed from service until the repair is made. Only manufacturer-supplied or -approved components shall be used to maintain and repair the treadmill. The maintenance instructions shall call the reader's attention to these facts.

6.4 *Operational Instructions*—Each function of the machine shall be explained in the operation instructions or owner's/user's manual or both including the following topics.

6.4.1 Maximum user weight.

6.4.2 The function of the immobilization method.

6.4.3 Function of the emergency stop method.

6.4.4 Operation of all controls on the control panel.

6.5 *Installation Instructions*—If the treadmill requires installation instructions, the installation instructions or owner's/user's manual or both shall include the following:

6.5.1 The first section in the installation instructions shall be a listing of all warnings related to correct and safe installation of the treadmill.

6.5.2 A review of all warning labels that relate to the correct and safe installation and how to obtain replacements shall be made.

6.5.3 Installation of power supply shall comply with local building codes.

6.5.4 Procedures for proper storage, movement, and placement shall be indicated.

6.5.5 Set up and operate the treadmill on a solid level surface.

6.5.6 The recommended minimum clearance required around each treadmill for access to, passage around, and

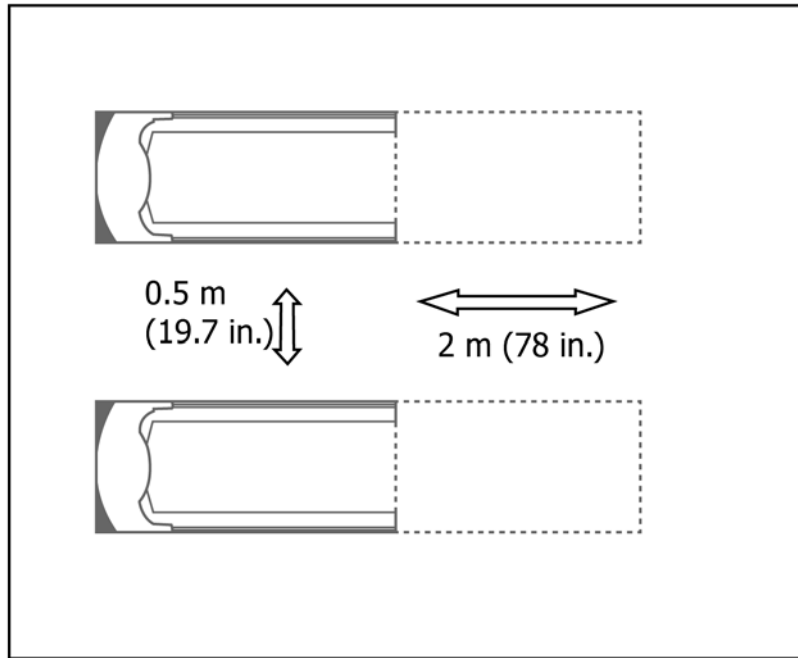


FIG. 4 Minimum Clearance for Emergency Dismount

emergency dismount shall be stated. The minimum dimensions are to be: 0.5 m (19.7 in.) on each side of the treadmill and 2 m (78 in.) behind. See Fig. 4.

6.6 *Marking*—Treadmills shall have identification affixed to the machine indicating the following.

6.6.1 The name, address, and telephone numbers of the manufacturer or distributor or both.

6.6.2 Serial and model numbers.

6.6.3 Date of manufacture or code number that indicates the approximate date of manufacture.

6.6.4 A notification if the treadmill is for consumer use only.

6.6.5 On institutional treadmills designed for a maximum user weight of less than 135 kg (300 lb), the maximum user weight shall be affixed to the machine in a location where the user can easily read the statement prior to use.

7. Keywords

7.1 acceleration; handrails; moving surface; safe zone; treadmill

APPENDIX

(Nonmandatory Information)

X1. Additional Readings

X1.1 The following documents were used in the development of this specification:

X1.1.1 UL 961 Electric Hobby and Sports Equipment³

X1.1.2 UL 1439 Test for Sharpness of Edges on Equipment³

X1.1.3 UL 2111 Thermal Protectors for Motors³

X1.1.4 EN 957-1 Stationary Training Equipment—Part 1: General Safety Requirements and Test Methods⁴

X1.1.5 EN 957-6 Stationary Training Equipment—Part 6: Treadmills, Additional Specific Safety Requirements and Test Methods⁴

⁴ Available from CEN Management Centre, 36 rue de Stassart, B-1050, Brussels, Belgium.

ASTM International takes no position respecting the validity of any patent rights asserted in connection with any item mentioned in this standard. Users of this standard are expressly advised that determination of the validity of any such patent rights, and the risk of infringement of such rights, are entirely their own responsibility.

This standard is subject to revision at any time by the responsible technical committee and must be reviewed every five years and if not revised, either reapproved or withdrawn. Your comments are invited either for revision of this standard or for additional standards and should be addressed to ASTM International Headquarters. Your comments will receive careful consideration at a meeting of the responsible technical committee, which you may attend. If you feel that your comments have not received a fair hearing you should make your views known to the ASTM Committee on Standards, at the address shown below.

This standard is copyrighted by ASTM International, 100 Barr Harbor Drive, PO Box C700, West Conshohocken, PA 19428-2959, United States. Individual reprints (single or multiple copies) of this standard may be obtained by contacting ASTM at the above address or at 610-832-9585 (phone), 610-832-9555 (fax), or service@astm.org (e-mail); or through the ASTM website (www.astm.org). Permission rights to photocopy the standard may also be secured from the Copyright Clearance Center, 222 Rosewood Drive, Danvers, MA 01923, Tel: (978) 646-2600; <http://www.copyright.com/>