



# Standard Specification for Expanded-Metal Doors<sup>1</sup>

This standard is issued under the fixed designation F1072; the number immediately following the designation indicates the year of original adoption or, in the case of revision, the year of last revision. A number in parentheses indicates the year of last reapproval. A superscript epsilon ( $\epsilon$ ) indicates an editorial change since the last revision or reapproval.

## 1. Scope

1.1 This specification covers steel expanded-metal doors suitable for installation in expanded-metal bulkheads, structural bulkheads, and structural arches.

1.2 The values stated in inch-pound units are to be regarded as the standard. The values given in parentheses are for information only.

## 2. Referenced Documents

### 2.1 ASTM Standards:<sup>2</sup>

- A36/A36M Specification for Carbon Structural Steel
- A167 Specification for Stainless and Heat-Resisting Chromium-Nickel Steel Plate, Sheet, and Strip
- D3951 Practice for Commercial Packaging
- F783 Specification for Staple, Handgrab, Handle, and Stirrup Rung

### 2.2 Other Documents:

- ABS Rules for Building and Classing Steel Vessels<sup>3</sup>
- AWS D1.1 Structural Welding Code<sup>4</sup>

## 3. Classification

3.1 Expanded-metal doors are furnished in four types (see Detail “J”) as follows:

- 3.1.1 Type I—Right hand (RH).
- 3.1.2 Type II—Left hand (LH).
- 3.1.3 Type III—Right hand reverse (RHR).
- 3.1.4 Type IV—Left hand reverse (LHR).

## 4. Ordering Information

4.1 Orders for doors under this specification shall include this specification number and type.

<sup>1</sup> This specification is under the jurisdiction of ASTM Committee F25 on Ships and Marine Technology and is the direct responsibility of Subcommittee F25.03 on Outfitting and Deck Machinery.

Current edition approved June 1, 2012. Published October 2012. Originally approved in 1987. Last previous edition approved in 2006 as F1072 – 94 (2006). DOI: 10.1520/F1072-94R12.

<sup>2</sup> For referenced ASTM standards, visit the ASTM website, www.astm.org, or contact ASTM Customer Service at service@astm.org. For *Annual Book of ASTM Standards* volume information, refer to the standard’s Document Summary page on the ASTM website.

<sup>3</sup> Available from American Bureau of Shipping, ABS Plaza 16855 Northchase Dr., Houston, TX 77060.

<sup>4</sup> Available from American Welding Society, 550 N.W. Le Jeune Rd., Miami, FL 33126.

## 5. Materials and Manufacture

5.1 *Materials*—See [Table 1](#).

5.2 *Manufacture*:

5.2.1 Doors shall be furnished with the vertical support channels and top angle in place. A temporary brace shall be included at the frame bottom to prevent racking.

5.2.2 Welding shall be in accordance with AWS D1.1 Structural Welding Code or ABS Rules for Building and Classing Steel Vessels.

## 6. Installation Requirements

6.1 Doors shall be fitted with rubber-tipped bumpers and a manually operated catch for holding doors in an open position. These shall be furnished and installed by others.

6.2 Provision shall be made for the installation of a rim latch set operated by knobs on both sides. This hardware shall be furnished and installed by others.

6.3 Padlocks shall be furnished by others.

6.4 Any holes needed in the frame for installation in expanded-metal or other types of bulkheads shall be made at installation by others.

## 7. Dimensions and Tolerances

7.1 Dimensions are as indicated in [Figs. 1-8](#) and [Table 1](#).

7.2 *Tolerance*— $\pm 1/16$  in. (1.5 mm).

## 8. Workmanship, Finish, and Appearance

8.1 Doors and frames shall be free from all cracks, burrs, sharp edges, and other defects.

8.2 The door manufacturer shall apply a nonhazardous corrosion-inhibiting primer coating to all door assemblies.

## 9. Packaging and Package Marking

9.1 Each expanded-metal door shall be individually packed for shipment and storage in accordance with Practice [D3951](#).

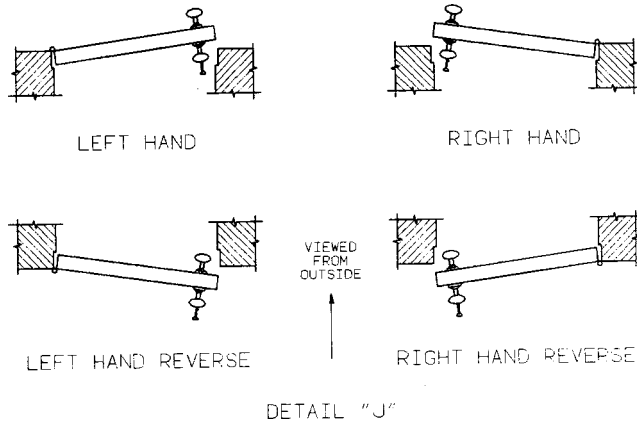
9.2 In addition to any special marking required by the contract or purchase order, each expanded-metal door shall be marked in accordance with Practice [D3951](#).

## 10. Keywords

10.1 expanded-metal doors; expanded-metal bulkheads; metal doors; structural arches; structural bulkheads

TABLE 1 Expanded-Metal Door Materials

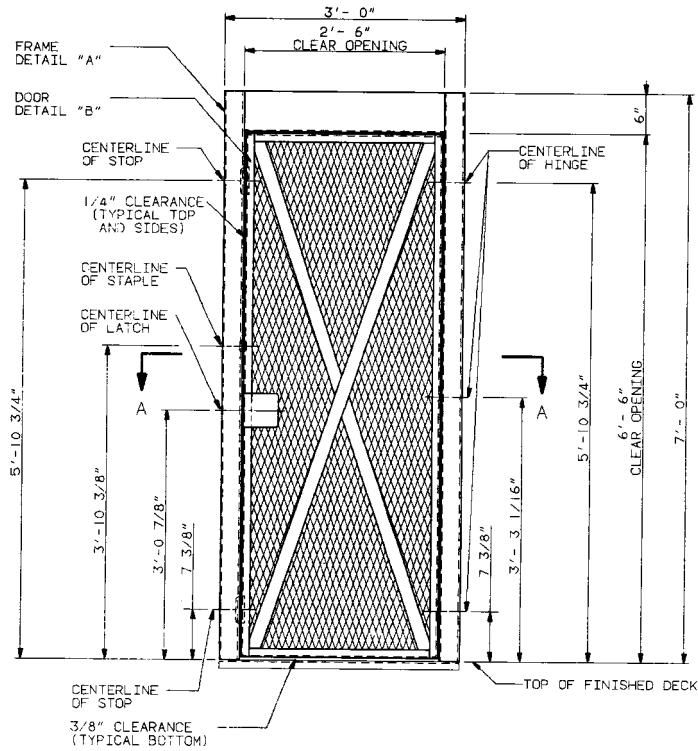
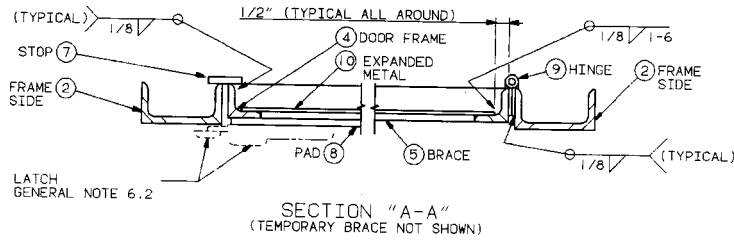
NOTE 1—1 in. = 25.4 mm.



DETAIL "J"

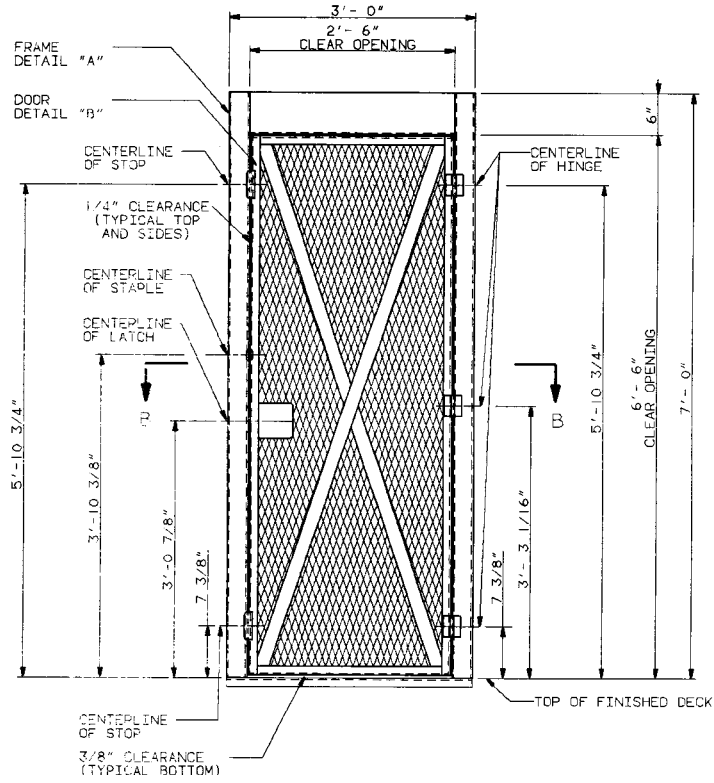
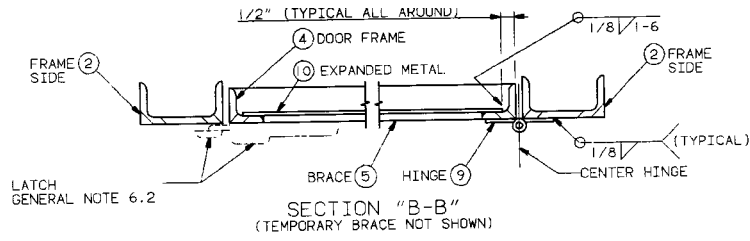
Item Number	Description
1	Frame Top—Angle, 6 x 3½ x 5/16 in., Specification A36/A36M.
2	Frame Side—Channel, C3 x 5.0, Specification A36/A36M.
3	Staple—Round bar, Specification F783.
4	Door Frame—Angle, 1¼ x 1¼ x ¼ in., Specification A36/A36M.
5	Brace—Flat bar, 2 x ¼ in., Specification A36/A36M.
6	Cross Brace—Flat bar, 2 x ¼ in., Specification A36/A36M.
7	Stop—Flat bar, 4 x ¼ in., Specification A36/A36M.
8	Pad—Flat bar, 4 x ¼ in., Specification A36/A36M.
9	Hinge—Swaged butt, plain, fixed pin, 3- x 2½-in. Type 316 stainless steel, Specification A167.
10	Expanded Metal—13-gage x ½-in. flat pattern, Specification A36/A36M.
11	Temporary Brace—Angle 1¼ x 1¼ x ¼ in., Specification A36/A36M. (See 5.2.1.)

**ASTM F1072 - 94 (2012)**



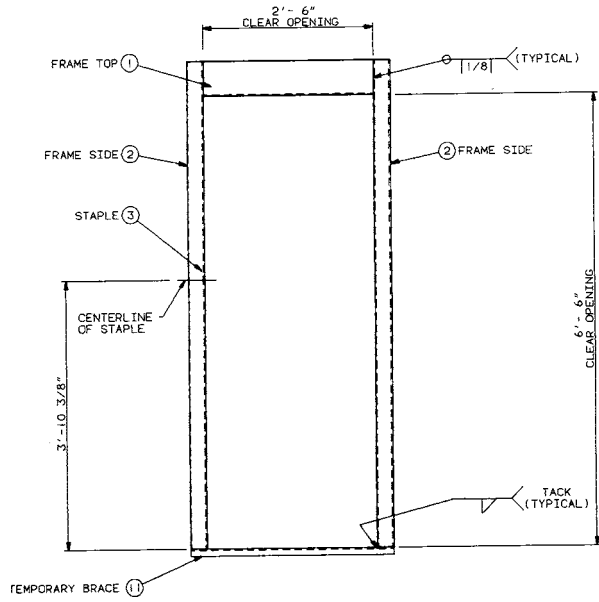
**FIG. 1 Right-Hand Door and Frame Assembly—Type I (Left Hand, Type II Not Shown)**

ASTM F1072 - 94 (2012)



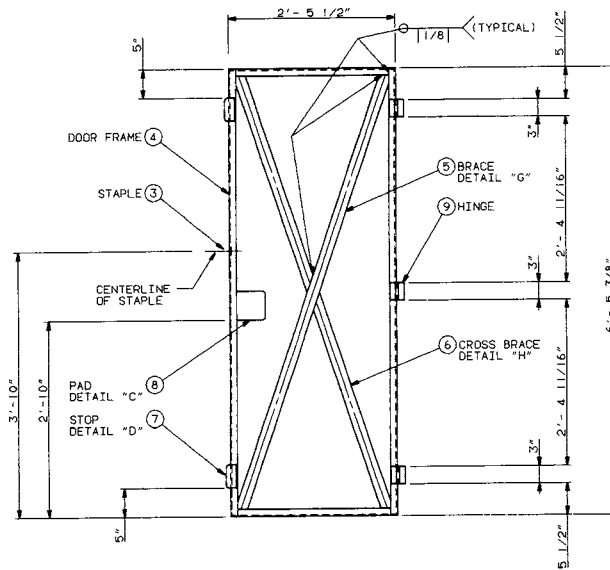
NOTE 1—1 in. = 25.4 mm.

FIG. 2 Right-Hand Reverse Door and Frame Assembly—Type III (Left Hand, Type IV Not Shown)



NOTE 1—1 in. = 25.4 mm.

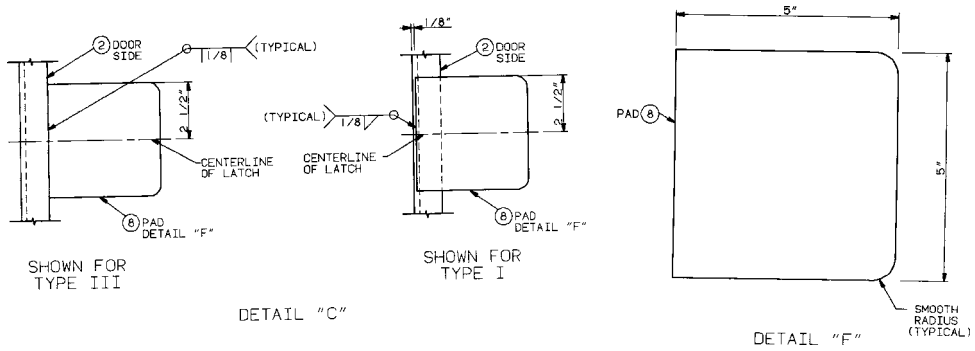
FIG. 3 Frame



DETAIL "B"  
(TYPE III SHOWN)  
(ALL OTHER TYPES SIMILAR)  
(SEE STOP AND PAD DETAILS)

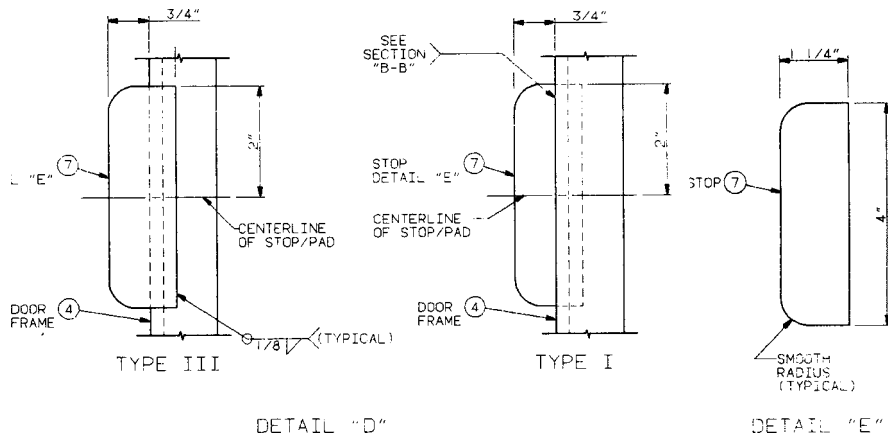
NOTE 1—1 in. = 25.4 mm.

FIG. 4 Door



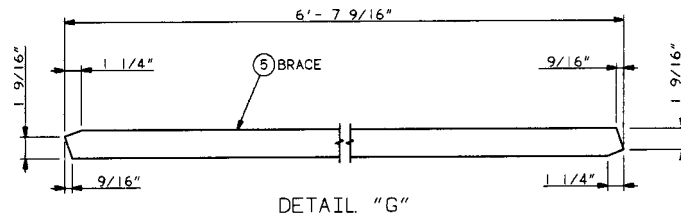
NOTE 1—1 in. = 25.4 mm.

FIG. 5 Pad

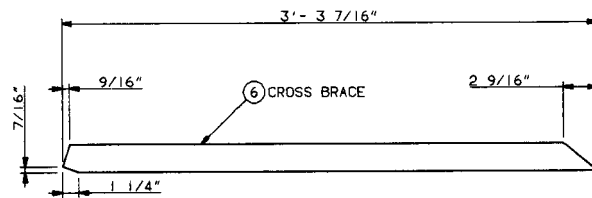


NOTE 1—1 in. = 25.4 mm.

FIG. 6 Stop



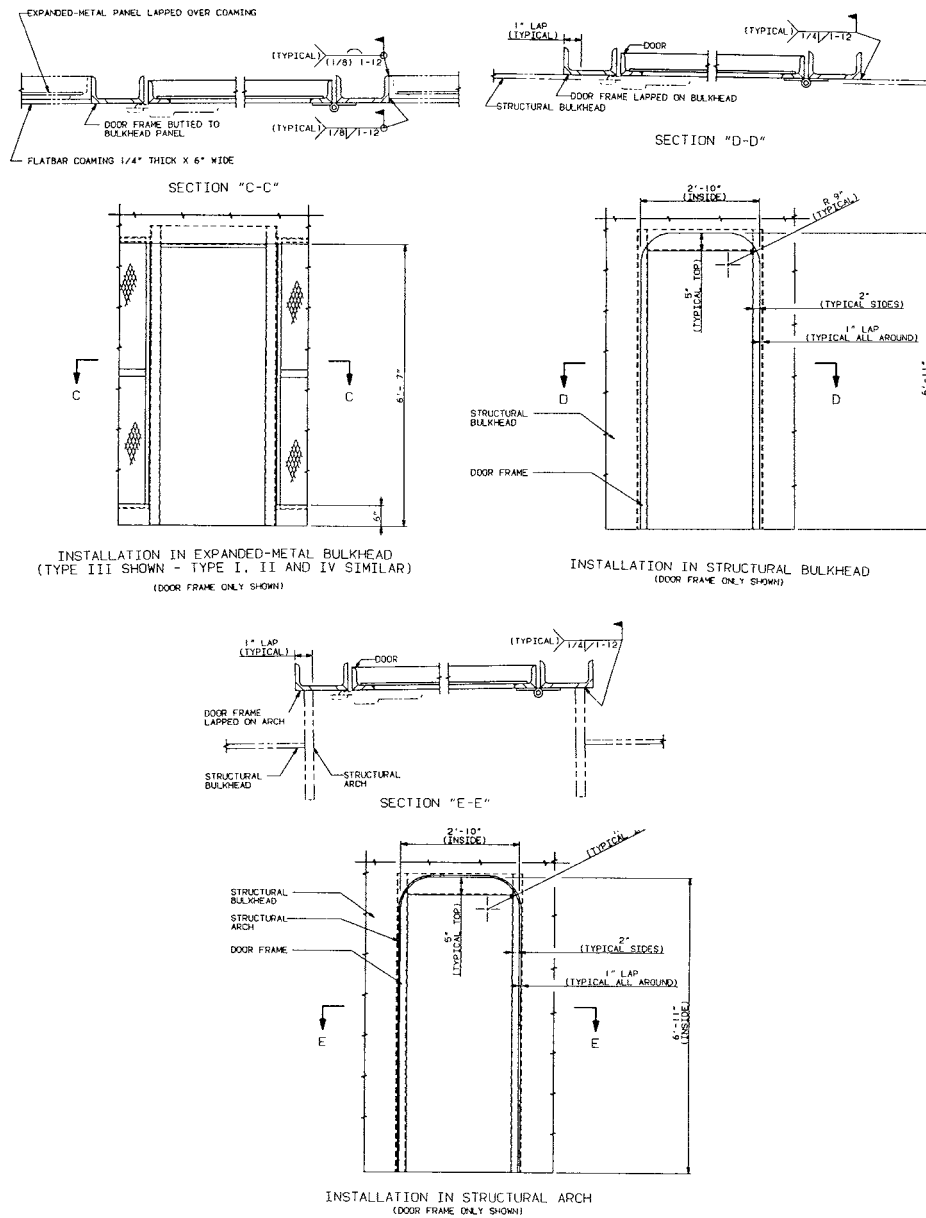
DETAIL "G"



DETAIL "H"

NOTE 1—1 in. = 25.4 mm.

FIG. 7 Brace and Cross Brace



NOTE 1—1 in. = 25.4 mm.

**FIG. 8 Installation Details**

ASTM International takes no position respecting the validity of any patent rights asserted in connection with any item mentioned in this standard. Users of this standard are expressly advised that determination of the validity of any such patent rights, and the risk of infringement of such rights, are entirely their own responsibility.

This standard is subject to revision at any time by the responsible technical committee and must be reviewed every five years and if not revised, either reapproved or withdrawn. Your comments are invited either for revision of this standard or for additional standards and should be addressed to ASTM International Headquarters. Your comments will receive careful consideration at a meeting of the responsible technical committee, which you may attend. If you feel that your comments have not received a fair hearing you should make your views known to the ASTM Committee on Standards, at the address shown below.

This standard is copyrighted by ASTM International, 100 Barr Harbor Drive, PO Box C700, West Conshohocken, PA 19428-2959, United States. Individual reprints (single or multiple copies) of this standard may be obtained by contacting ASTM at the above address or at 610-832-9585 (phone), 610-832-9555 (fax), or service@astm.org (e-mail); or through the ASTM website (www.astm.org). Permission rights to photocopy the standard may also be secured from the ASTM website (www.astm.org/COPYRIGHT/).