



Designation: F1057 – 17

Standard Practice for Estimating the Quality of Extruded Poly (Vinyl Chloride) (PVC) Pipe by the Heat Reversion Technique¹

This standard is issued under the fixed designation F1057; the number immediately following the designation indicates the year of original adoption or, in the case of revision, the year of last revision. A number in parentheses indicates the year of last reapproval. A superscript epsilon (ϵ) indicates an editorial change since the last revision or reapproval.

1. Scope*

1.1 This practice covers a procedure for estimating the quality of extruded poly (vinyl chloride) (PVC) plastic pipes by observing the reaction of pipe specimens after exposure to hot air in the oven at $180 \pm 5^\circ\text{C}$ for 30 min duration.

1.2 *This standard does not purport to address all of the safety problems, if any, associated with its use. It is the responsibility of the user of this standard to establish appropriate safety and health practices and determine the applicability of regulatory limitations prior to use.*

1.3 *This international standard was developed in accordance with internationally recognized principles on standardization established in the Decision on Principles for the Development of International Standards, Guides and Recommendations issued by the World Trade Organization Technical Barriers to Trade (TBT) Committee.*

2. Significance and Use

2.1 This practice is applicable to distinguish between properly and improperly extruded PVC plastic pipe. It can be used to:

2.1.1 Reveal incomplete exsiccation of compound before or during extrusion ([Note 1](#)),

2.1.2 Determine the presence of stress in the pipe wall produced by the extrusion process ([Note 2](#)),

2.1.3 Determine whether unfused areas are present, and

2.1.4 Reveal contamination.

NOTE 1—Residual moisture in the compound vaporizes at extrusion temperatures and is normally evacuated as it forms vapor. Pockets of moisture trapped in the pipe wall result from incomplete exsiccation of the compound, and may reduce the physical properties of the pipe.

NOTE 2—Minor residual stress in the pipe will not impair field performance and handleability. High-residual stress has no proven effect on performance, but may impair handleability during installation.

¹ This practice is under the jurisdiction of ASTM Committee F17 on Plastic Piping Systems and is the direct responsibility of Subcommittee F17.40 on Test Methods.

Current edition approved Feb. 15, 2017. Published April 2017. Originally approved in 1987. Last previous edition approved in 2010 as F1057–10. DOI: 10.1520/F1057-17.

3. Apparatus

3.1 *Air Circulating Oven*, thermostatically controlled, capable of operating at $180 \pm 5^\circ\text{C}$ ($356 \pm 9^\circ\text{F}$) and capable of meeting the recovery requirement of [4.3](#). Additionally, the oven must have heat generation (power) capacity such that the recovery achieved while at a constant oven set point. The air temperature with the oven (that is, the test temperature) is to be monitored within 3 in. from the outer edge of the test specimen; make assurances that the temperature does not contact the test specimen.

NOTE 3—The oven should be vented to the outside of the building.

NOTE 4—Monitoring of the test temperature within the oven may require a secondary temperature monitoring device in addition to the temperature monitoring device within the oven control system.

4. Procedure

4.1 Prepare specimens of pipe 150 mm (6 in.) long or longer with ends cut square so that they stand perpendicular on end when placed in the oven.

4.1.1 Cut staves from pipes whose size prevents insertion of full round specimens in the oven. Prepare large-diameter pipe staves so that their lengths parallel to the pipe axis are 150 mm (6 in.) or longer.

4.2 Examine the specimens and note any unusual features such as discoloration, inclusions, or pinholes in the cut edge.

4.3 Place the specimens of whole pipe in the preheated oven so that each specimen stands on end with sufficient separation between them so that hot air can flow freely between the pipes. Place specimens of pipe staves on the floor of the preheated oven so that they rest on their longitudinal edges and so that hot air can flow freely around them. Record the time when the air in the oven directly adjacent to the test specimen recovers to 180°C (356°F). Recovery must occur within 15 min or less. After an additional 30 min of exposure within the test temperature tolerance of $180 \pm 5^\circ\text{C}$, remove the specimens, taking care not to alter any heat effects.

4.4 Examine the specimens within 3 min after removal from the oven, while still hot. With a sharp knife, cut whole pipe specimens lengthwise at approximately 60° circumferential intervals, resulting in six pipe staves of approximately equal

*A Summary of Changes section appears at the end of this standard

widths. Cut specimens being tested in the form of staves into three roughly equal segments. Note the following for the report:

- 4.4.1 The shape of the pipe ends and the pipe barrel,
- 4.4.2 The condition and appearance of both the inner and outer surfaces of the material, and
- 4.4.3 The condition and appearance of the cut edges of the material.

NOTE 5—Care should be exercised when removing samples from the oven, as pipe with thinner walls may have degraded during conditioning.

5. Interpretation

5.1 A suggested interpretation of the results observed is given in [Appendix X1](#).

6. Report

- 6.1 Report the following information, where applicable:
 - 6.1.1 Information given by the pipe marking, including the nominal size of pipe, the type of pipe, and the date code;

- 6.1.2 Form in which the pipe was tested;
- 6.1.3 Date of the test and test temperature;
- 6.1.4 Extent and nature of any distortion at the ends or in the barrel of the specimen;
- 6.1.5 Condition and appearance of the outer surface;
- 6.1.6 Condition and appearance of the inner surface;
- 6.1.7 Appearance of the cut edges, and
- 6.1.8 Any other changes attributable to the test.
- 6.1.9 Evidence of any of the conditions listed in [2.1](#): incomplete exsiccation of compound, stress in the pipe wall, unfused areas, and contamination.

7. Precision and Bias

7.1 No statement is made about either the precision or bias of Practice F1057 for estimating the quality of PVC pipe, since the result merely states whether there is conformance to the criteria for acceptability suggested by the interpretation.

8. Keywords

- 8.1 heat reversion; PVC pipe

APPENDIX

(Nonmandatory Information)

X1. SUGGESTED INTERPRETATION OF RESULTS

X1.1 The specimens should be deemed to be satisfactory if none of the following effects are reported:

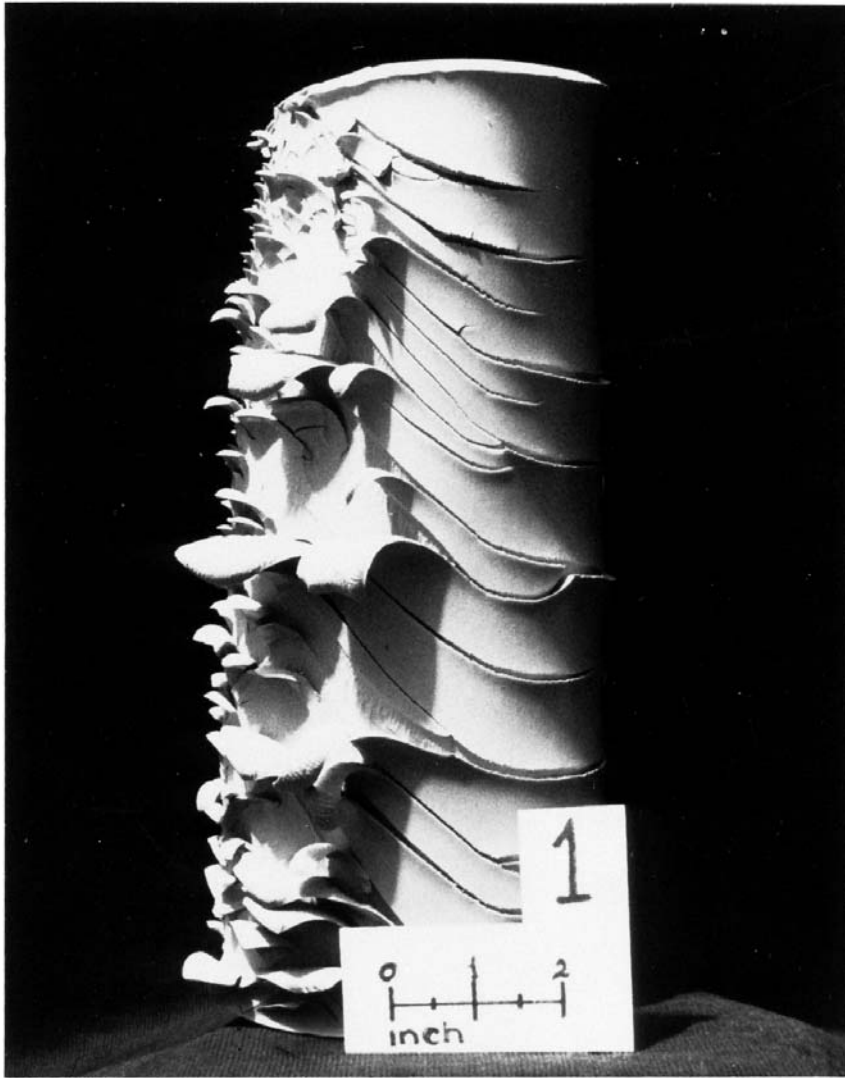
X1.1.1 Evidence of the presence of stress in the pipe wall, commonly appearing as fish-scaling of any severity (see [Fig. X1.1](#)) for an illustration of fish-scaling);

X1.1.2 Evidence of the incomplete exsiccation of compound before or during extrusion, appearing as wall separation (see [Fig. X1.2](#) and [Fig. X1.3](#) for illustrations of wall separation);

X1.1.3 Evidence of incomplete exsiccation of compound or contamination, or both, appearing as blisters on the outer or inner surface (see [Fig. X1.4](#) and [Fig. X1.5](#) for illustrations of blistering);

X1.1.4 Contamination made evident by the test (see [Fig. X1.4](#) for an illustration of contamination); and

X1.1.5 Evidence of contamination, appearing as wall separation caused by pockets of granular material composed of unfused compound or foreign material. ([Fig. X1.3](#) illustrates the general appearance, except that the voids will be filled with a granular material and may appear at any point in the wall.)



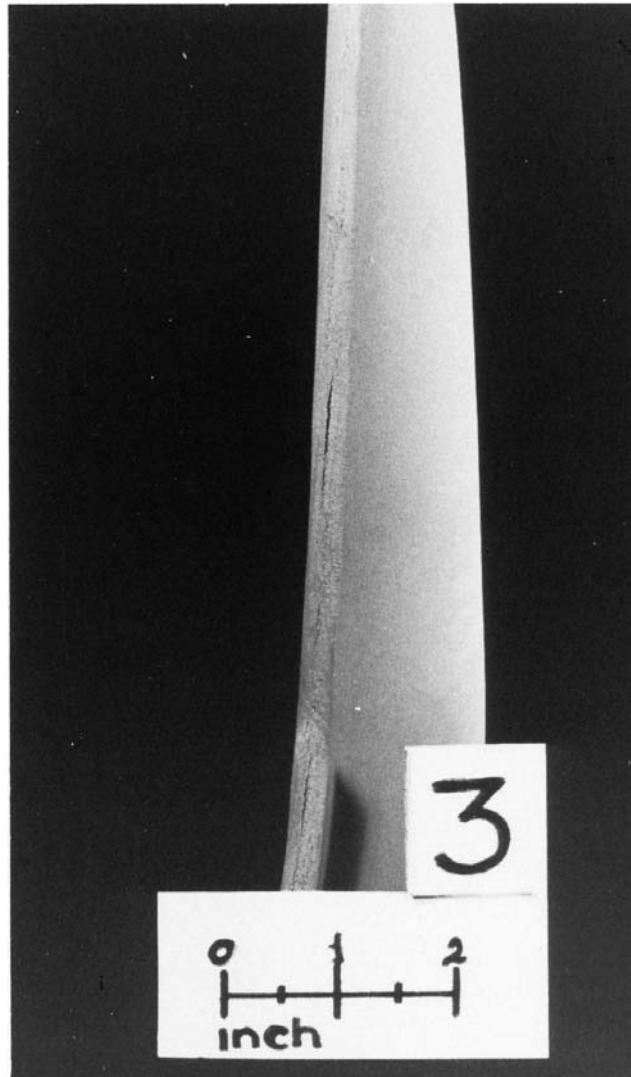
NOTE 1—Severe fish-scaling indicates uneven cooling in the sizing sleeve during extrusion. Resulting wall stresses are released by the heat reversion test. Note the flared end, another indication of this effect.

FIG. X1.1 Severe Fish Scaling



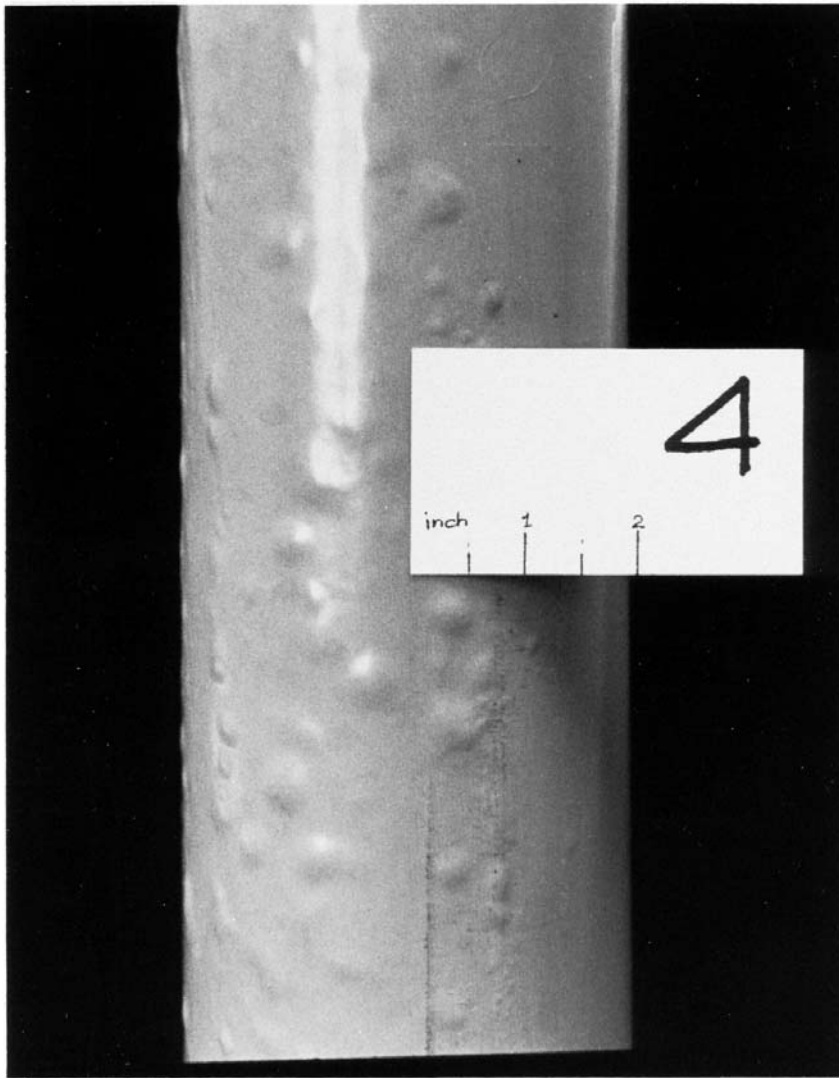
NOTE 1—Severe wall separation reveals the presence of moisture in the extrudate. This usually indicates plugged or inadequate vacuum control.

FIG. X1.2 Severe Wall Separation



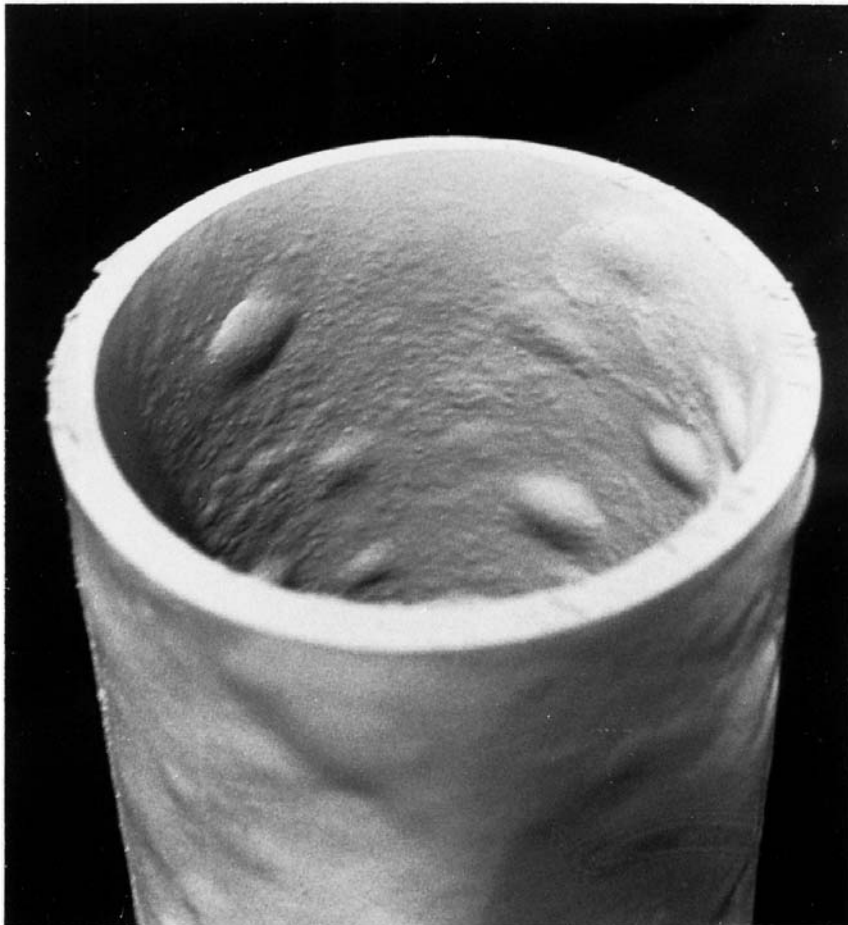
NOTE 1—Less severe wall separation shows the presence of moisture in the extrudate. Poor vacuum control is indicated. Surface blistering may not be present.

FIG. X1.3 Less Severe Wall Separation



NOTE 1—External blistering is pronounced in this case and shows the presence of moisture in the extrudate. Less severe blistering requires careful examination. Dark axial lines below the number tag are signs of contamination by burnt PVC compound picked up inside the extruder head.

FIG. X1.4 External Blistering



NOTE 1—Internal blistering will usually accompany pronounced external blistering and severe wall separation as an indication of gross vacuum control problems.

FIG. X1.5 Internal Blistering

SUMMARY OF CHANGES

Committee F17 has identified the location of selected changes to this standard since the last issue (F1057–10) that may impact the use of this standard.

- (1) Section 6 revised to include reporting of evidence of any of the conditions noted in 2.1 and the test temperature.
- (2) Clarified the oven as an “Air Circulating Oven,” and added the word “circulating”.

- (3) Added language from 2.1 to figure descriptions in Appendix X1.

ASTM International takes no position respecting the validity of any patent rights asserted in connection with any item mentioned in this standard. Users of this standard are expressly advised that determination of the validity of any such patent rights, and the risk of infringement of such rights, are entirely their own responsibility.

This standard is subject to revision at any time by the responsible technical committee and must be reviewed every five years and if not revised, either reapproved or withdrawn. Your comments are invited either for revision of this standard or for additional standards and should be addressed to ASTM International Headquarters. Your comments will receive careful consideration at a meeting of the responsible technical committee, which you may attend. If you feel that your comments have not received a fair hearing you should make your views known to the ASTM Committee on Standards, at the address shown below.

This standard is copyrighted by ASTM International, 100 Barr Harbor Drive, PO Box C700, West Conshohocken, PA 19428-2959, United States. Individual reprints (single or multiple copies) of this standard may be obtained by contacting ASTM at the above address or at 610-832-9585 (phone), 610-832-9555 (fax), or service@astm.org (e-mail); or through the ASTM website (www.astm.org). Permission rights to photocopy the standard may also be secured from the Copyright Clearance Center, 222 Rosewood Drive, Danvers, MA 01923, Tel: (978) 646-2600; <http://www.copyright.com/>