



Designation: E2110 – 17

Standard Terminology for Exterior Insulation and Finish Systems (EIFS)¹

This standard is issued under the fixed designation E2110; the number immediately following the designation indicates the year of original adoption or, in the case of revision, the year of last revision. A number in parentheses indicates the year of last reapproval. A superscript epsilon (ϵ) indicates an editorial change since the last revision or reapproval.

1. Scope

1.1 This terminology covers terms and definitions pertaining to materials and processes used in the design and application of exterior insulation and finish systems (EIFS).

2. Referenced Documents

2.1 *ASTM Standards*:²

E2112 Practice for Installation of Exterior Windows, Doors and Skylights

3. Terminology

3.1 *Definitions*:

accessories, *n*—preformed metal, fiberglass, or plastic members for use to form corners, edges, control joints, or decorative effects.

aesthetic joint, *n*—a deprecated term. See **aesthetic reveal**.

aesthetic reveal, *n*—a groove cut into the insulation board which serves the function of decoration or to provide a starting or stopping point for finish-coat application, or both.

back wrap, *n*—a means of terminating an EIFS by continuing the reinforced base coat from the exterior side of the insulation board around its edge to the substrate. In the process of back wrapping, the reinforcing mesh is mechanically or adhesively secured to the substrate prior to installation of the insulation board. (See Fig. 1.)

DISCUSSION—As an alternative method, back wrapping is achieved by wrapping the edge, back, and exterior side of the insulation board with reinforced base coat prior to fastening the insulation board to the substrate. This is referred to as prewrap.

base coat, *n*—the initial wet-state material, either factory or field-mixed, used to encapsulate the nonmetallic reinforcing mesh or fasten the insulation to the substrate.

¹ This terminology is under the jurisdiction of ASTM Committee E06 on Performance of Buildings and is the direct responsibility of Subcommittee E06.58 on Exterior Insulation and Finish Systems (EIFS).

Current edition approved Jan. 15, 2017. Published January 2017. Originally approved in 2000. Last previous edition approved in 2011 as E2110 – 11. DOI: 10.1520/E2110-17.

² For referenced ASTM standards, visit the ASTM website, www.astm.org, or contact ASTM Customer Service at service@astm.org. For *Annual Book of ASTM Standards* volume information, refer to the standard's Document Summary page on the ASTM website.

cold joint, *n*—the visible junction in a finish coat.

cure, *v*—to develop the ultimate properties of a wet-state material by a chemical process.

drainage mat, *n*—component used in some EIFS-clad drainage wall assemblies, a corrosion resistive material used as a spacer to provide a drainage path between the EIFS and the weather resistive barrier.

dry, *v*—to develop the ultimate properties of a wet-state material solely by evaporation of volatile ingredients.

durability, *n*—the capability of a building assembly, component, product, or construction to maintain serviceability over not less than a specified time.

edge wrap, *n*—the condition of the perimeter at the EIFS where the reinforced base coat is terminated by wrapping the reinforced base coat onto the edge of the substrate. (See Fig. 2.)

EIFS, *n*—see **exterior insulation and finish system (EIFS)**.

EIFS-clad barrier wall assembly, *n*—a wall assembly for which the EIFS cladding provides weather resistance for the EIFS clad portion of the assembly.

EIFS-clad drainage wall assembly, *n*—a wall assembly incorporating a means of drainage between the EIFS and a weather resistive barrier, for incidental moisture resulting from a breach in the EIFS, to the exterior of the EIFS clad portion of the assembly.

embed, *v*—to encapsulate the nonmetallic reinforcing mesh in the base coat.

expansion joint, *n*—a structural separation between building elements that allow independent movement without damage to the assembly.

exterior insulation and finish system (EIFS), *n*—nonload bearing, exterior wall cladding system that consists of an insulation board attached either adhesively or mechanically, or both, to the substrate; an integrally reinforced base coat; and a textured protective finish coat.

factory mix, *n*—a material that is prepared at the point of manufacture and is ready to use without the addition of other materials, except possibly water to adjust consistency.

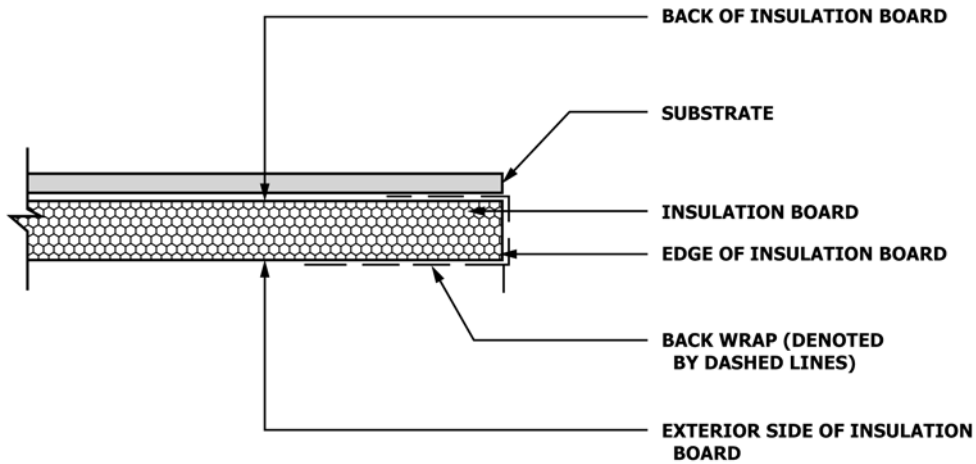
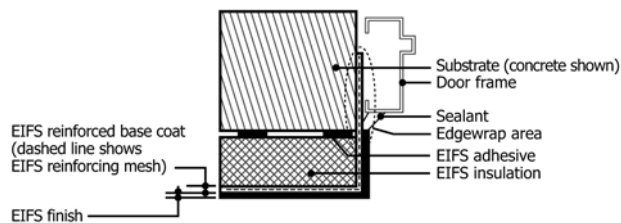


FIG. 1 Example of Back Wrap



NOTE 1—Not to scale.

FIG. 2 Example of Edge Wrap (at Door Jamb)

flash set (quick set), *n*—the early hardening or stiffness in the working characteristics of Portland-cement paste, mortar, or concrete, usually with the evolution of considerable heat. Stiffness cannot be dispelled nor the plasticity regained by further mixing without addition of water; also known as quick set.

field mix, *n*—a material that is mixed in the field with other components or water, or both.

finish coat, *n*—the final wet-state material, which provides color and texture, applied over the reinforced base coat.

framing member, *n*—studs, joists, runners (tracks), bridging, bracing, and related accessories manufactured or supplied in wood for hot- or cold-formed steel.

initial grab, *n*—the ability of a wet-state material to remain in place initially after it has been applied.

initial set, *n*—a time-related set caused by the hydration process.

integrally reinforced base coat, *n*—base coat that has been reinforced with the nonmetallic reinforcing mesh and that maintains its shape and attachment in its dry state by its bond to the insulation board.

lamina, *n*—composite of the base coat, reinforcement, and finish coat.

mechanical fastener, *n*—a corrosion-resistant component used to attach the insulation board to the substrate or framing member.

nonmetallic reinforcing mesh, *n*—a fiberglass component of the EIFS encapsulated in the base coat to strengthen the system.

DISCUSSION—Nonmetallic reinforcing mesh is available in various weights to achieve different levels of impact resistance.

pot life, *n*—the duration of time that the wet-state remains workable after it has been mixed.

primers, *n*—liquid coatings applied to improve the adhesion of the EIFS to the substrate or of the finish to the base coat.

DISCUSSION—Primers are sometimes applied to improve the water resistance of cementitious base coats.

running bond, *n*—pattern used when installing the thermal insulation board, to offset the vertical insulation board joints from joints in previous rows of insulation board.

substrate, *n*—surface to which the EIFS is applied.

surface sealer, *n*—material used to enhance weather resistance.

temper, *v*—to bring to a workable state by adding water.

texture, *n*—any surface appearance as contrasted to a smooth surface.

thermal insulation board, *n*—a system component of a specific type and density that functions to reduce heat flow through the wall and serves as the surface to receive the base coat.

weather-resistive barrier, *n*—a material conforming to Practice E2112, located behind the EIFS.

wet edge, *n*—the leading edge of a continuously applied wet-state material.

wet-state materials, *n*—the adhesive, base coat, and finish coat applied in liquid or semiliquid state.

4. Keywords

4.1 base coat; definitions; EIFS; exterior insulation and finish system; finish; insulation; mechanical fastener; reinforcing mesh; synthetic stucco; terminology

This standard is subject to revision at any time by the responsible technical committee and must be reviewed every five years and if not revised, either reapproved or withdrawn. Your comments are invited either for revision of this standard or for additional standards and should be addressed to ASTM International Headquarters. Your comments will receive careful consideration at a meeting of the responsible technical committee, which you may attend. If you feel that your comments have not received a fair hearing you should make your views known to the ASTM Committee on Standards, at the address shown below.

This standard is copyrighted by ASTM International, 100 Barr Harbor Drive, PO Box C700, West Conshohocken, PA 19428-2959, United States. Individual reprints (single or multiple copies) of this standard may be obtained by contacting ASTM at the above address or at 610-832-9585 (phone), 610-832-9555 (fax), or service@astm.org (e-mail); or through the ASTM website (www.astm.org). Permission rights to photocopy the standard may also be secured from the Copyright Clearance Center, 222 Rosewood Drive, Danvers, MA 01923, Tel: (978) 646-2600; <http://www.copyright.com/>