



Standard Test Method for Comparing the Brightness of Fluorescent Penetrants¹

This standard is issued under the fixed designation E1135; the number immediately following the designation indicates the year of original adoption or, in the case of revision, the year of last revision. A number in parentheses indicates the year of last reapproval. A superscript epsilon (ϵ) indicates an editorial change since the last revision or reapproval.

1. Scope*

1.1 This test method describes the techniques for comparing the brightness of the penetrants used in the fluorescent dye penetrant process. This comparison is performed under controlled conditions which eliminate most of the variables present in actual penetrant examination. Thus, the brightness factor is isolated and is measured independently of the other factors which affect the performance of a penetrant system.

1.2 The brightness of a penetrant indication is dependent on the developer with which it is used. This test method however, measures the brightness of a penetrant on a convenient filter paper substrate which serves as a substitute for the developer.

1.3 The brightness measurement obtained is color-corrected to approximate the color response of the average human eye. Since most examination is done by human eyes, this number has more practical value than a measurement in units of energy emitted. Also, the comparisons are expressed as a percentage of some chosen standard penetrant because no absolute system of measurement exists at this time.

1.4 *This standard does not purport to address all of the safety concerns, if any, associated with its use. It is the responsibility of the user of this standard to establish appropriate safety and health practices and determine the applicability of regulatory limitations prior to use.*

2. Referenced Documents

2.1 *ASTM Standards:*²

- E691 Practice for Conducting an Interlaboratory Study to Determine the Precision of a Test Method
- E1316 Terminology for Nondestructive Examinations

3. Terminology

3.1 *Definitions:*

¹ This test method is under the jurisdiction of ASTM Committee E07 on Nondestructive Testing and is the direct responsibility of Subcommittee E07.03 on Liquid Penetrant and Magnetic Particle Methods.

Current edition approved June 15, 2012. Published July 2012. Originally approved in 1986. Last previous edition approved in 2008 as E1135 – 97 (2008) ^{ϵ 1}. DOI: 10.1520/E1135-12.

² For referenced ASTM standards, visit the ASTM website, www.astm.org, or contact ASTM Customer Service at service@astm.org. For *Annual Book of ASTM Standards* volume information, refer to the standard's Document Summary page on the ASTM website.

3.1.1 Definitions of terms applicable to this test method may be found in Terminology E1316.

4. Summary of Test Method

4.1 Simulated indications are prepared by impregnating filter paper with a specified quantity of the penetrant under test. The samples and similarly prepared standards are then measured in a fluorometer equipped to excite the penetrant with near ultraviolet (black) light and respond to color approximately as does the human eye under the conditions encountered during a normal examination. The fluorometer must be equipped with a special sample holder to accept the samples employed.

4.2 The sample preparation is not indicative of the total system performance but is convenient as a lot acceptance test. A known amount of penetrant is diluted with a specified amount of a volatile solvent, pieces of filter paper are soaked in the mixture, the paper is dried under specified conditions at room temperature, placed in the sample holder, and measured with the fluorometer.

5. Significance and Use

5.1 The penetrant is one of the major components of the fluorescent penetrant process, and very influential in the degree of performance attained by a given system or group of materials. The penetrant must enter the discontinuity, be removed from the part surface but not from the discontinuity, be brought out of the discontinuity by the developer, and finally viewed and detected by the inspector. If all processing parameters are optimized for the parts being examined and the examination materials in use, the intrinsic brightness of the penetrant becomes the factor which governs the sensitivity of the system.

5.2 Because the eye responds logarithmically rather than linearly to changes of brightness, differences in brightness must be fairly large to be significant. Differences of 25 % are obvious, 12 % noticeable, and 6 % detectable by the eye. Experts may sometimes detect 3 % differences, but these are not usually significant to the average observer.

5.3 The significance of the results also depends on the deviation between readings on the same material sample. Different samples, even when prepared out of the same initial quantity of penetrant will not exactly reproduce readings.

*A Summary of Changes section appears at the end of this standard



FIG. 1 Turner Fluorometer, with Door Open Showing Sample Holder and Filters in Place

These differences occur because of paper differences and penetrant migration on the paper samples.

5.4 To determine the confidence limits for the test results, it is necessary to perform certain statistical calculations. The confidence limits are determined by the equation:

$$CL = \bar{X} \pm ts / \sqrt{n} \quad (1)$$

where:

CL = the limits within which we can be confident the value lies,

\bar{X} = the average of all readings,

t = "student's *t*" (values of which are given by statistical manuals),

n = the number of readings used,

s = the standard deviation determined by the equation:

$$s = \sqrt{\frac{\sum (X - \bar{X})^2}{n - 1}} \quad (2)$$

where:

X = the individual readings.

In this use, the 95 % confidence level (the value will lie within the limits 95 % of the time) is sufficient. At this level, *t* for 4 samples is 3.182.

5.4.1 If the confidence limits of two material samples overlap, the materials must be considered equal even though the measured average values are different.

6. Apparatus

6.1 *Filter Paper*, a good quality Chromatography paper such as Whatman #3 mm Chromatography paper or Whatman #4.

6.2 *Pipets*, 1-mL capacity.

6.3 *Volumetric Flasks*, with stopper, 25-mL.

6.4 *Paper Drying Holders*—"Crocodile" type battery clips 2 in. long with ½ in. opening have been found satisfactory. Set up holders to allow drying inside desiccator.

6.5 *Methylene Chloride or Acetone*, technical grade.

6.6 *Desiccator*, 250-mm diameter or larger.

6.7 *Silica Gel*, for use as desiccant.

7. Sample Preparation

7.1 *Sample Preparation*—Normally a set of samples of a standard material must be prepared along with any test samples.

7.1.1 Pipet 1.0 mL of chosen penetrant into a 25-mL stoppered volumetric flask.

7.1.2 Fill flask to line with methylene chloride or acetone, stopper and mix. (If penetrant is not soluble in methylene chloride, use acetone.)

7.1.3 Pour 10 to 20 mL of mixture into a 50-mL beaker.

7.1.4 Using forceps, dip 4 papers (cut to size for sample holder in use), one at a time, into beaker, withdraw by drawing across the lip of the beaker to remove excess liquid, and clip into paper drying holder. Holder shall cover as small an area of paper as possible.

7.1.5 Hang papers in a vertical position inside desiccator until dry. This will require approximately 5 min at room temperature.

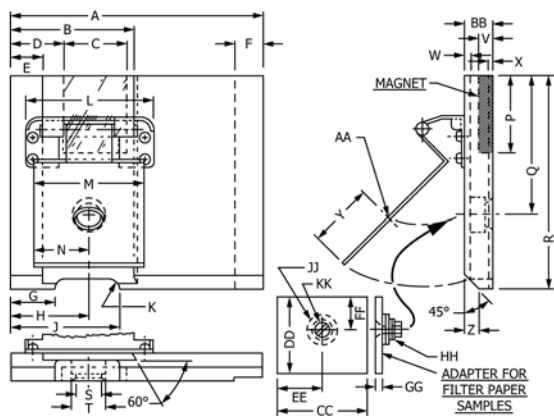
8. Procedure for Turner Fluorometer

NOTE 1—This instrument is no longer in production and can not be purchased from Turner.

NOTE 2—All available apparatus may not be suitable for these applications.

8.1 *Sample Holder*, designed for the fluorometer in use.

8.1.1 The sample holder for the Turner Fluorometers (see Fig. 1) is detailed in Fig. 2. It is designed for use in the standard



Dimensions

| | in. | mm |
|----|--|--------|
| A | 4.5 | 114.3 |
| B | 2.186 | 55.52 |
| C | 1.125 | 28.575 |
| D | 0.875 | 22.225 |
| E | 0.563 | 14.30 |
| F | 0.50 | 12.70 |
| G | 0.813 | 20.65 |
| H | 1.375 | 34.925 |
| J | 1.938 | 49.225 |
| K | 0.188 radius (2) | 4.775 |
| L | 2.25 | 57.15 |
| M | 2.00 | 50.80 |
| N | 1.00 | 25.40 |
| P | 1.375 | 34.925 |
| Q | 2.50 | 63.50 |
| R | 3.813 | 96.85 |
| S | 0.438 diameter drill thru | 11.125 |
| T | 0.625 diameter counterbore 0.25 deep | 15.875 |
| V | 0.25 | 6.35 |
| W | 0.125 | 3.175 |
| X | 0.063 | 1.60 |
| Y | 1.125 | 28.575 |
| Z | 0.25 | 6.35 |
| AA | 0.50 drill thru & chamfer | 12.70 |
| BB | 0.50 | 12.70 |
| CC | 1.594 | 40.489 |
| DD | 1.375 | 34.925 |
| EE | 0.797 | 20.244 |
| FF | 0.625 | 15.875 |
| GG | 0.125 | 3.175 |
| HH | (2) No. 6 flat washers | |
| JJ | (2) 3/16 in. (4.76 mm) flat washers | |
| KK | (1) No. 6 (0.138) flat head machine screw 1/2 in. (12.7 mm) long & hex nut | |

FIG. 2 Sample Holder for the Turner Fluorometer

door from which the spring clip and the interior portion of the tube holder have been removed.

8.2 *Primary Light Filter*—The primary (light source) filter for the Turner fluorometers is a Corning-Kopp CS 7-37 2-in. square^{3,4} glass filter.

³ If you are aware of alternative suppliers, please provide this information to ASTM Headquarters. Your comments will receive careful consideration at a meeting of the responsible technical committee,¹ which you may attend.

⁴ The sole source of supply known to the committee at this time is Kopp Glass Inc., P.O. Box 8255, Pittsburgh, PA 15218.

8.3 *Secondary Light Filters*—The secondary (detector) filter system consists of a Corning-Kopp 3-77 and Kodak #2A, 86A and CC40Y.^{3,5} The Turner fluorometer requires 2 in. square filters.

8.4 *Neutral Density Intensity Reducing Filters*—An assortment of photographic type filters is required. These should be the same size as the secondary filters (8.3) and the filters chosen for any measurement should be mounted with the secondary filters.

8.5 Place the primary filter in the right filter holder and the secondary filters in the left filter holder.

8.6 Insert neutral density filters in secondary filter position and set sensitivity control (under primary filter) to “1”.

8.7 Turn on instrument and allow 15 min warm up before use.

8.8 Place a prepared sample of the brightest material to be measured in the sample holder.

8.9 Place holder in instrument door, close door, and note reading. Open door and insert proper neutral density filters to bring reading on scale, preferably in the 70 to 90 scale division range.

8.10 Open door, remove sample holder, remove sample, and replace with an untreated filter paper.

8.11 Place sample holder in door, close door, and set reading to zero with “blank” control.

8.12 Remove blank paper and insert prepared samples for measurement. Alternate samples of unknown and standard material to minimize affect of any instrument drift which might occur.

9. Procedure for Coleman Fluorometer

NOTE 3—This instrument is no longer in production and can not be purchased from Coleman.

9.1 *Sample Holder*—The sample holder for the Coleman Fluorometer (see Fig. 3) is detailed in Fig. 4. It is designed for insertion into the sample port in the top of the instrument. Stops to control its rotation may be installed on the instrument case and the sample holder.

9.2 *Primary Light Filter*—The primary (light source) filter for the Coleman 12C is the Coleman B-1 or B-1-S filter.

9.3 *Secondary Light Filter*—The secondary (Detector) filter system consists of a Corning-Kopp 3-77 and Kodak #2A, 86A, and CC40Y. The filter size 1 5/8 in. by 1 5/8 in. These must be mounted in an empty filter frame to be inserted in the fluorometer.

9.4 *Neutral Density Intensity Reducing Filters*—An assortment of photographic type filters are required and should be mounted with the secondary filters.

9.5 Insert a Coleman B-1 or B-1-S filter (in Coleman filter frame) into primary filter position (horizontal position behind sensitivity control lever) and a package of filters consisting of

⁵ The sole source of supply of the Kodak 2A, 86A, and CC40Y known to the committee at this time is Eastman Kodak, Inc., Rochester, NY 14650.



FIG. 3 Coleman Photofluorometer with Sample Holder

a Corning CS 3-77, Kodak Wratten 2A, 86A and CC4OY, and a 2.0 neutral density mounted in a Coleman filter frame, glass filter facing right, into the secondary filter position (vertical to left of the sample hole).

9.6 Turn on instrument and allow 15 to 30 min warm up.

9.7 Compare prepared papers under black light and choose one of the brightest group to set the instrument.

9.8 Place chosen prepared paper in sample holder, lock into place, and insert holder into sample port of fluorometer. Sample window should face away from operator at approximately a 45° angle to the left.

9.9 Set “Std” control and all blank controls in the middle of their adjustment ranges. (Do not force “Std” control or release notch stop under it since this will shut instrument off.)

9.10 Move sensitivity control full right, depress shutter button, and move sensitivity control gently left until meter reads near top of scale.

9.11 Remove sample holder, replace fluorescent paper with an untreated blank paper and reinsert in instrument.

9.12 Depress shutter button and rotate sample holder until highest reading is obtained. If reading goes off scale, move sensitivity control right until it is on scale.

9.13 With shutter button depressed, turn coarse blank control until meter reads approximately zero. Adjust to exactly zero with fine blank control.

9.14 Remove blank paper and insert brightest treated paper.

9.15 Depress shutter control and rotate sample until highest reading is obtained, then adjust “Std” control until meter reads approximately 90.

9.16 If desired adjustment cannot be attained, adjust sensitivity control, then repeat 9.11 – 9.15 until proper adjustment is obtained.

9.17 Measure papers, alternating standard and test samples to minimize the effect of instrument drift, should it occur.

10. Procedure For the Model S291^{3,6}

10.1 *Sample Holder*—The sample holder is pictured in Fig. 5. It is designed for insertion in the sample slot on the front of the photofluorometer. The sample holder comes with the instrument.

10.2 *Primary Light Filter*—The primary (Light source) filter for the S291 photofluorometer is an integrally filtered long-wave 4-W lamp.

10.3 *Secondary Light Filters*—The Model S291 photofluorometer uses a OGR^{3,7} green and OB14 blue^{3,6} glass filter that are preinstalled.

10.4 All filters are installed by the manufacturer and the instrument is ready for use.

10.5 Turn on the instrument and allow a 10 to 15 min warm up.

10.6 Compare the prepared papers under the black light and choose one of the brightest papers to set the instrument.

10.7 Place the chosen paper in the sample holder, and insert the holder into the sample port of the photofluorometer.

10.8 Adjust the meter response to 80 by turning the “CAL” adjustment knob.

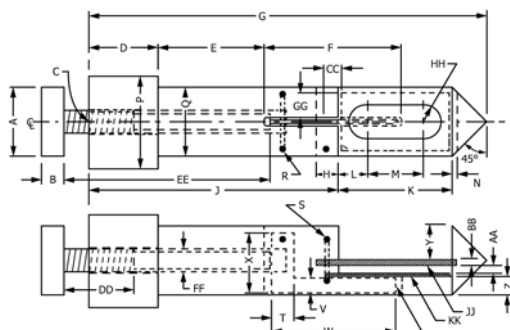
10.9 Remove the sample holder, and replace the fluorescent paper with an untreated blank paper and re-insert into the instrument.

10.10 Adjust the meter response to 00 by turning the “Zero” adjustment knob.

10.11 Remove the blank paper and insert the prepared sample for measurement. Alternate samples of test and standard material to minimize effect of any instrument drift that might occur.

⁶ The sole source of supply of the Model S291 known to the committee at this time is NDT I Taliana SAS of Viale Monza, Italy.

⁷ The sole source of supply of the OGR green and OB14 blue glass filter known to the committee at this time is Chance Pilkington, London, Great Britain.



Dimensions

| | in. | mm |
|----|---|--------|
| A | 0.75 diameter | 19.05 |
| B | 0.25 | 6.35 |
| C | #21 (.159 in.) diameter drill × 2.125 deep and 10-32 thread × 0.75 deep | 53.975 |
| D | 0.75 | 19.05 |
| E | 1.125 | 28.58 |
| F | 0.125 Slot × 1.5 long | 3.18 |
| G | 4.313 | 109.55 |
| H | 0.25 | 6.35 |
| J | 2.688 | 68.28 |
| K | 1.25 | 31.75 |
| L | 0.313 | 7.95 |
| M | 0.625 | 15.88 |
| N | 0.047 | 1.19 |
| P | 1.00 diameter | 25.40 |
| Q | 0.75 diameter | 19.05 |
| R | Drive pin for Lifter Arm | |
| S | Drive pin for Face Plate | |
| T | 0.25 | 6.35 |
| V | 0.344 | 8.74 |
| W | 1.344 | 34.14 |
| X | 0.656 | 16.66 |
| Y | 0.375 | 9.53 |
| Z | 0.190 | 4.826 |
| AA | 0.100 | 2.54 |
| BB | 0.063 | 1.60 |
| CC | 0.188 | 4.775 |
| DD | 10-32 thread × 0.75 long | 19.05 |
| EE | 3.5 | 88.9 |
| FF | 0.125 diameter | 3.175 |
| GG | 0.281 | 7.137 |
| HH | 0.186 radius (2) | 4.72 |
| JJ | Face Plate made of #16 gage (.0598 in.) sheet × .75 × 1.5 | 1.519 |
| KK | Lifter Plate made of #22 gage (.029 in.) sheet × 0.625 × 1.375 | 19.05 |
| LL | Lifter Arm made of 0.063 plate | 38.1 |
| | | 0.737 |
| | | 15.875 |
| | | 34.925 |
| | | 1.60 |

FIG. 4 Sample Holder for the Coleman 12C

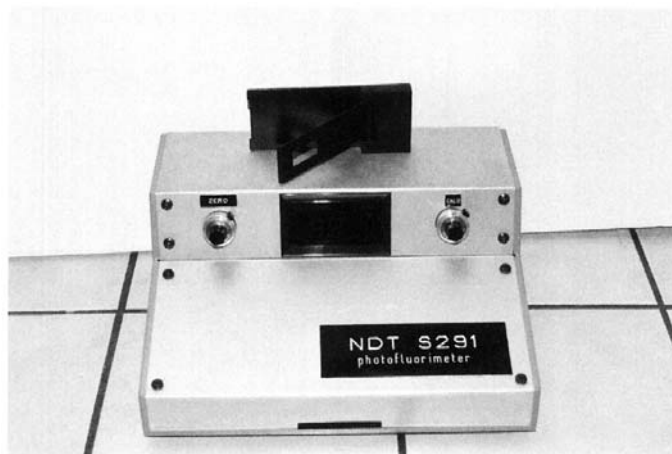


FIG. 5 Sample Holder

11. Calculation

11.1 Calculate the fluorescence of the test material as a percentage of that of the standard material by the formula

$$\bar{X}/\bar{S} \times 100 \quad (3)$$

where:

\bar{X} = the average of the test material reading, and
 \bar{S} = the average of the standard material reading.

12. Precision and Bias

12.1 The results for the Turner Fluorometers and the Coleman 12C small duplicate tests should not be considered suspect unless they differ by more than:

- 3.9 % repeatability (within the same laboratory)
- 14.0 % reproducibility (between different laboratories)

as determined in accordance with Practice E691.

12.2 No information can be presented on the bias of the procedure of Fluorescent Brightness Measurement using the Model S291 because there are not enough instruments in use to perform a study.

13. Keywords

13.1 brightness of dye penetrants; dye penetrants; fluorescent penetrants

SUMMARY OF CHANGES

Committee E07 has identified the location of selected changes to this standard since the last issue (E1135 – 97 (2008)^{E1}) that may impact the use of this standard. (June 15, 2012)

(1) Revised **6.1** and **7.1.2**.

ASTM International takes no position respecting the validity of any patent rights asserted in connection with any item mentioned in this standard. Users of this standard are expressly advised that determination of the validity of any such patent rights, and the risk of infringement of such rights, are entirely their own responsibility.

This standard is subject to revision at any time by the responsible technical committee and must be reviewed every five years and if not revised, either reapproved or withdrawn. Your comments are invited either for revision of this standard or for additional standards and should be addressed to ASTM International Headquarters. Your comments will receive careful consideration at a meeting of the responsible technical committee, which you may attend. If you feel that your comments have not received a fair hearing you should make your views known to the ASTM Committee on Standards, at the address shown below.

This standard is copyrighted by ASTM International, 100 Barr Harbor Drive, PO Box C700, West Conshohocken, PA 19428-2959, United States. Individual reprints (single or multiple copies) of this standard may be obtained by contacting ASTM at the above address or at 610-832-9585 (phone), 610-832-9555 (fax), or service@astm.org (e-mail); or through the ASTM website (www.astm.org). Permission rights to photocopy the standard may also be secured from the Copyright Clearance Center, 222 Rosewood Drive, Danvers, MA 01923, Tel: (978) 646-2600; <http://www.copyright.com/>