



Standard Test Method for Determination of 4-Carboxybenzaldehyde and *p*-Toluic Acid in Purified Terephthalic Acid by Reverse Phase High Performance Liquid Chromatography¹

This standard is issued under the fixed designation D7884; the number immediately following the designation indicates the year of original adoption or, in the case of revision, the year of last revision. A number in parentheses indicates the year of last reapproval. A superscript epsilon (ϵ) indicates an editorial change since the last revision or reapproval.

1. Scope

1.1 This test method covers the determination of the 4-Carboxybenzaldehyde (4-CBA) and *p*-Toluic acid (*p*-TOL) in purified terephthalic acid (PTA) by reverse phase high performance liquid chromatography (HPLC). This method is applicable for 4-CBA from 2 to 500 mg/kg and for *p*-TOL from 10 to 500 mg/kg, respectively.

1.2 In determining the conformance of the test results using this method to applicable specification, results shall be rounded off in accordance with the rounding-off method of Practice E29.

1.3 The values stated in SI units are to be regarded as standard. No other units of measurement are included in this standard.

1.4 *This standard does not purport to address all of the safety concerns, if any, associated with its use. It is the responsibility of the user of this standard to establish appropriate safety and health practices and determine the applicability of regulatory limitations prior to use.*

2. Referenced Documents

2.1 *ASTM Standards:*²

D1193 Specification for Reagent Water

D4790 Terminology of Aromatic Hydrocarbons and Related Chemicals

D6809 Guide for Quality Control and Quality Assurance Procedures for Aromatic Hydrocarbons and Related Materials

E29 Practice for Using Significant Digits in Test Data to Determine Conformance with Specifications

E177 Practice for Use of the Terms Precision and Bias in

ASTM Test Methods

E682 Practice for Liquid Chromatography Terms and Relationships

E691 Practice for Conducting an Interlaboratory Study to Determine the Precision of a Test Method

2.2 *ISO Document:*³

EN ISO 8213 Chemical products for industrial use—Sampling techniques—Solid chemical products in the form of particles varying from powders to coarse lumps

2.3 *Other Document:*⁴

OSHA Regulations, 29 CFR paragraphs 1910.1000 and 1910.1200

3. Summary of Test Method

3.1 *Reverse Phase HPLC Method*—PTA sample is dissolved in ammonium hydroxide solution, and a fixed volume of this solution is injected into a high performance liquid chromatograph equipped with a UV detector. A C18 chemically bonded column is used to separate the impurities 4-CBA and *p*-TOL from PTA. The external standard calibration is used for quantification.

4. Significance and Use

4.1 The presence of 4-CBA and *p*-TOL in PTA used for the production of polyester is undesirable because they can slow down the polymerization process and 4-CBA imparts coloration to the polymer due to thermal instability.

4.2 Determining the amount of 4-CBA and *p*-TOL remaining from the manufacture of PTA is often required. This test method is suitable for setting specifications and for use as an internal quality control tool where these products are produced or are used.

5. Apparatus

5.1 *High Performance Liquid Chromatograph (HPLC)*—any HPLC capable of pumping the mobile phase at flow rates

¹ This test method is under the jurisdiction of ASTM Committee D16 on Aromatic Hydrocarbons and Related Chemicals and is the direct responsibility of Subcommittee D16.02 on Oxygenated Aromatics.

Current edition approved Aug. 1, 2013. Published October 2013. DOI: 10.1520/D7884-13.

² For referenced ASTM standards, visit the ASTM website, www.astm.org, or contact ASTM Customer Service at service@astm.org. For *Annual Book of ASTM Standards* volume information, refer to the standard's Document Summary page on the ASTM website.

³ Available from American National Standards Institute (ANSI), 25 W. 43rd St., 4th Floor, New York, NY 10036, http://www.ansi.org.

⁴ Available from U.S. Government Printing Office Superintendent of Documents, 732 N. Capitol St., NW, Mail Stop: SDE, Washington, DC 20401, http://www.access.gpo.gov.

TABLE 1 Recommended Operating Conditions

Column	C18
Stationary phase	Octadecylsilane chemically bonded silica
Particle size	5 μm
Material of column	stainless steel
Length of column	150 mm
Inner diameter	4–5 mm
Mobile phase	0.06 % H_3PO_4 solution: acetonitrile = 82:18
Flow rate	1.0 mL/min
UV detector	254 nm for 4-CBA 240 nm for <i>p</i> -TOL
Injection amount	20 μL
Column temperature	40°C

between 0.1 and 2.0 mL/min, with a pressure between 0 and 40 MPa and a pulsation of less than 1 % full scale deflection under the test conditions described in **Table 1**. The S/N (signal to noise) ratio should be 3:1 or greater for 2 mg/kg 4-CBA and 10 mg/kg *p*-TOL.

5.2 *Sample Injection System*—capable of injecting 1 to 25 μL , using either partial or full loop mode, with a repeatability of ± 1 %.

5.3 *Detector—Variable Wavelength Ultraviolet Photometric Detector (VWD), Multi-wavelength Detector, or Photometric Diode Array Detector (PDA)*—capable of operating at 240 and 254 nm.

5.4 *Column Oven*—any suitable HPLC column oven (block heating or air circulating) capable of maintaining a constant temperature of $\pm 1^\circ\text{C}$ within the range of 20 to 70°C.

5.5 *Chromatography Data System*.

5.6 *HPLC Columns*:

5.6.1 A stainless steel HPLC column packed with an octadecylsilane (C18) chemically bonded silica stationary phase is suitable. See **Table 1** for recommended operating conditions.

5.6.2 A C18 column with different dimensions (inner diameter, length, particle size, etc.) that provides adequate resolution to quantitate 4-CBA and *p*-TOL in a PTA sample can also be used.

5.7 *Analytical Balance*—readable to ± 0.0001 g.

5.8 *Sample Filter*—A disposable syringe filter made of cellulose acetate, with a pore size between 0.22 and 0.45 μm , and is chemically inert to aqueous solutions, is recommended for the removal of particulate matter from the sample solution.

6. Reagents and Materials

6.1 *Purity of Reagents*—Unless otherwise indicated, it is intended that all reagents shall conform to the reagent grade specification for analytical reagents of the American Chemical Society, where such specifications are available.⁵ Other grades may be used, provided it is first ascertained that the reagent is

⁵ *Reagent Chemicals, American Chemical Society Specifications*, American Chemical Society, Washington, DC. For suggestions on the testing of reagents not listed by the American Chemical Society, see *Analar Standards for Laboratory Chemicals*, BDH Ltd., Poole, Dorset, U.K., and the United States *Pharmacopeia and National Formulary*, U.S. Pharmacopeial Convention, Inc. (USPC), Rockville, MD.

of sufficiently high purity to permit its use without lessening the performance or accuracy of the determination. Reagent chemicals shall be used for all tests.

NOTE 1—Calibration and detection limits of this test method can be biased by the purity of the reagents.

6.2 *Ammonium Hydroxide*—25 to 28 %.

6.3 *Phosphoric Acid*—HPLC grade.

6.4 *Acetonitrile*—HPLC grade. (**Warning**—Acetonitrile is flammable and hazardous in case of skin or eye contact, ingestion, or inhalation.)

6.5 *Water*—HPLC grade.

6.6 *Ammonium Hydroxide Solution*—ammonium hydroxide mixed with water as 1:1 (V:V).

6.7 *PTA Standard for Calibration*—A certified PTA calibration standard with known amounts of 4-CBA and *p*-TOL is required. If it is not commercially available, please refer to **Annex A1** for determining the concentrations of 4-CBA and *p*-TOL in a PTA sample. The calibrated PTA sample can be served as a PTA calibration standard.

6.8 *Mobile Phase*:

6.8.1 *0.06 % H_3PO_4 Solution:Acetonitrile = 82:18*—Pipette 0.6 mL H_3PO_4 into a 1000 mL volumetric flask with 900 mL of water and make up to the mark with water to give 0.06 % H_3PO_4 solution. Mix 820 mL of H_3PO_4 solution and 180 mL of acetonitrile. Methanol could be used as an alternative to acetonitrile in the mobile phase.

NOTE 2—It is recommended to degas and filter the mobile phase before use; degassing can be done conveniently, on-line or off-line by helium sparging, vacuum degassing or ultrasonic agitation.

7. Hazards

7.1 Consult current federal regulations, supplier's Material Safety Data Sheets, and local regulations for all materials used in this test method.

8. Sampling, Test Specimens, and Test Units

8.1 Use only representative samples obtained as described in EN ISO 8213, unless otherwise specified.

9. Preparation of Apparatus

9.1 Set up the pump, sample injection system, column, oven, detector, and chromatography data system in accordance with the manufacturer's instructions. Adjust the instrument to the recommended conditions described in **Table 1**, allowing sufficient time for the equipment to reach equilibrium which is indicated by a stable horizontal baseline. For a new column, 4 to 6 hours of equilibration time may be required.

NOTE 3—Separation between peaks of 4-CBA and PTA can be optimized by carefully varying the aqueous-organic ratio and flow rate.

NOTE 4—It has been found for a reverse-phase HPLC, separation between 4-CBA and PTA can be improved by adding a certain amount of trifluoroacetic acid (TFA) in acetonitrile water solution as a mobile phase.

NOTE 5—A gradient mobile phase can also be used for improving chromatograph.

10. Calibration

10.1 Weigh, to the nearest 0.0001 g, about 0.5 g of PTA standard in a 25 mL beaker, add 3 mL of ammonium hydroxide

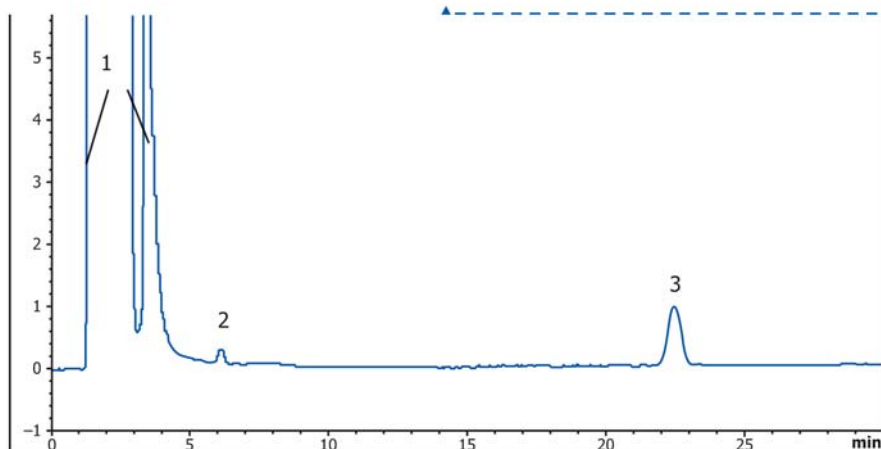


FIG. 1 Chromatogram of a PTA Sample (Reverse Phase HPLC)
1—PTA, 2—4-CBA, 3—*p*-TOL

solution, and 7 mL water to dissolve PTA completely. Then accurately transfer the resulting solution to a 250 mL volumetric flask, and dilute with water to the mark. Inject 20 μ L of the calibration standard solution into chromatograph for analysis. Record chromatogram and peak area values for 4-CBA and *p*-TOL respectively with data system.

NOTE 6—It is recommended that a calibration standard be run after every ten samples to check the stability of the chromatograph system.

11. Procedure

11.1 Weigh, to the nearest 0.0001 g, about 0.5 g of PTA sample, repeat the remaining steps in 10.1, and record peak area values of 4-CBA and *p*-TOL respectively. After each analysis, rinse the column with mobile phase until the baseline is stabilized for the next run. The representative chromatograms of a PTA sample is shown in Fig. 1.

12. Calculation

12.1 Calculate the concentration of 4-CBA or *p*-TOL in mg/kg, using the following equation:

$$X = \frac{m_s \cdot A \cdot C_s}{m \cdot A_s} \quad (1)$$

where:

X = concentration of 4-CBA or *p*-TOL in the PTA sample, mg/kg,

A = peak area of 4-CBA or *p*-TOL in the PTA sample,

m = weight of the PTA sample, g,

A_s = peak area of 4-CBA or *p*-TOL in the PTA standard,

C_s = concentration of 4-CBA or *p*-TOL in the PTA standard, mg/kg,

m_s = weight of the PTA standard, g.

13. Report

13.1 Report the value of 4-CBA or *p*-TOL content in mg/kg, to the nearest 1.0 mg/kg.

13.2 Report the following information in the report:

13.2.1 The complete identification of the sample tested.

13.2.2 Any deviation from the procedure specified (for example, detailed description of column and operating conditions).

13.2.3 Results of the test.

13.2.4 Any abnormal situations observed during the test.

14. Precision and Bias⁶

14.1 The precision of this test method is based on an intralaboratory study of Test Method D7884 conducted in 2012. One laboratory tested one PTA sample and one qualified terephthalic acid (QTA) sample for 4-CBA and *p*-TOL. Every test result represents an individual determination. The laboratory reported 20 replicate results for each analysis/material combination in order to estimate the repeatability limits of the standard. Practice E691 was followed for the design and analysis of the repeatability data; the details are given in Research Report RR:D16-1048.

14.1.1 *Repeatability Limit (r)*—Two test results obtained within one laboratory shall be judged not equivalent if they differ by more than the “*r*” value for that material; “*r*” is the interval representing the critical difference between the two test results for the same material, obtained by the same operator using the same equipment on the same day in the same laboratory.

14.1.1.1 Repeatability limits are listed in Table 2.

14.1.2 *Bias*—At the time of the study, the test specimens chosen for analysis were not accepted reference materials suitable for determining the bias for the test method, therefore no statement on bias is being made.

15. Quality Guidelines

15.1 Laboratories shall have a quality control system in place.

⁶ Supporting data have been filed at ASTM International Headquarters and may be obtained by requesting Research Report RR:D16-1048. Contact ASTM Customer Service at service@astm.org.

TABLE 2 Repeatability Limits

Sample	Analyte	Average (wt. mg/kg)	Repeatability S_r	Repeatability Limit r
PTA	4-CBA	8.6	0.14	0.41
	<i>p</i> -TOL	135.1	1.72	4.86
QTA	4-CBA	231.2	1.42	4.02
	<i>p</i> -TOL	23.1	0.68	1.92

15.1.1 Confirm the performance of the test instrument or test method by analyzing a quality control sample following the guidelines of standard statistical quality control practices.

15.1.2 A quality control sample is a stable material isolated from the production process and representative of the sample being analyzed.

15.1.3 When QA/QC protocols are already established in the testing facility, these protocols are acceptable when they confirm the validity of test results.

15.1.4 When there are no QA/QC protocols established in the testing facility, use the guidelines described in Guide **D6809** or similar statistical quality control practices.

16. Keywords

16.1 purified terephthalic acid; 4-Carboxybenzaldehyde; *p*-Toluic acid; high performance liquid chromatograph; reverse-phase HPLC

ANNEX

(Mandatory Information)

A1. RECOMMENDED PROCEDURE FOR CALIBRATION OF PTA SAMPLE

When a PTA standard with known amounts of 4-CBA and *p*-TOL is not available, a PTA sample with granularity of 80 to 160 μm , containing 4-CBA and *p*-TOL at concentrations of 10 to 25 mg/kg and 100 to 200 mg/kg, respectively, may be analyzed to determine the concentrations of 4-CBA and *p*-TOL by using the following standard addition method. This PTA sample with calibrated concentrations of 4-CBA and *p*-TOL can be used as the PTA standard for sample analysis.

A1.1 Reagents and Materials

A1.1.1 4-CBA—Purity >98.0 %.

A1.1.2 *P*-TOL—Purity >98.0 %.

A1.2 Calibration Solutions

A1.2.1 *Calibration Standard 4-CBA (10 $\mu\text{g/mL}$)*—Weigh, to the nearest 0.0001 g, about 0.0250 g of 4-CBA in a 25 mL beaker, add some water and a few drops of ammonium hydroxide solution, and stir until 4-CBA is completely dissolved. Adjust the pH value of the solution to 6–7 by using phosphoric acid solution. Then accurately transfer the resulting solution to a 50 mL volumetric flask and dilute with water to the mark to give a 500 $\mu\text{g/mL}$ 4-CBA stock solution. Then dilute with water 50 times to 10 $\mu\text{g/mL}$.

NOTE A1.1—Care must be taken to ensure a quantitative transfer of the solution from the beaker, and also any material that is removed by the pH probe, into the 50 mL volumetric flask.

A1.2.2 *Calibration Standard p-TOL (80 $\mu\text{g/mL}$)*—Weigh, to the nearest 0.0001 g, about 0.0200 g of *p*-TOL, following steps in **A1.2.1** to give a 400 $\mu\text{g/mL}$ *p*-TOL stock solution. Then dilute with water five times to 80 $\mu\text{g/mL}$.

A1.2.3 *PTA Spiked Solutions*—Accurately weigh 0.500 \pm 0.001 g of PTA in five 25 mL beakers each and follow steps in **10.1** to dissolve PTA samples. Then accurately transfer the solutions to five 250 mL volumetric flasks. Add 0.00, 0.50, 1.00, 1.50, and 2.00 mL of calibration standard 4-CBA and

calibration standard *p*-TOL to the above flasks and dilute with water to the mark. The concentrations of 4-CBA and *p*-TOL added in these PTA solutions are as follows:

4-CBA (mg/kg): 0.0, 10.0*K, 20.0*K, 30.0*K, and 40.0*K

where:

K = weight of 4-CBA from **A1.2.1**/0.0250

p-TOL (mg/kg): 0.0, 80.0*J, 160.0*J, 240.0*J, and 320.0*J

where:

J = weight of *p*-TOL from **A1.2.2**/0.0200

A1.3 Procedure

A1.3.1 Follow steps in **10.1** to analyze the series PTA spiked solutions and record the peak area values of 4-CBA and *p*-TOL respectively. Each sample should be run in duplicate to obtain an average value of peak area.

A1.4 Calculation

A1.4.1 Construct a calibration curve (see **Fig. A1.1**) by plotting the spiked concentration on the X-axis and the average peak area on the Y-axis based on the theory of least square linear regression. A linear calibration curve is required with a correlation coefficient (r^2) greater or equal to 0.99, otherwise the whole procedure should be repeated. A computer or data system may be used to interpret the calibration.

A1.4.1.1 The linear equation is as follows:

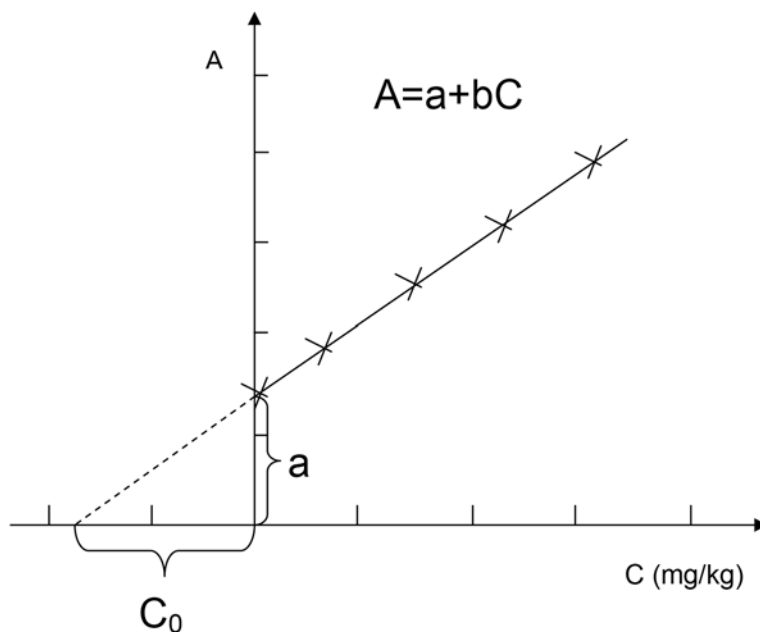


FIG. A1.1 Standard Addition Method for Calibration of 4-CBA or *p*-TOL in PTA
C = concentration of added 4-CBA or *p*-TOL in the PTA sample, mg/kg
A = average peak area of 4-CBA or *p*-TOL in the PTA sample

$$A = a + bC \quad (A1.1)$$

$$C_0 = \frac{a}{b} \quad (A1.2)$$

where:

- C = spiked concentration of 4-CBA or *p*-TOL in the PTA sample, mg/kg,
- A = average peak area of 4-CBA or *p*-TOL in the PTA sample,
- b = slope obtained from Eq A1.1,
- a = intercept obtained from Eq A1.1.

where:

- C_0 = concentration of 4-CBA or *p*-TOL in the PTA sample, mg/kg,
- b = slope obtained from Eq A1.1,
- a = intercept obtained from Eq A1.1.

A1.4.1.2 Calculate the concentrations of 4-CBA and *p*-TOL in this PTA sample using the following equation:

ASTM International takes no position respecting the validity of any patent rights asserted in connection with any item mentioned in this standard. Users of this standard are expressly advised that determination of the validity of any such patent rights, and the risk of infringement of such rights, are entirely their own responsibility.

This standard is subject to revision at any time by the responsible technical committee and must be reviewed every five years and if not revised, either reapproved or withdrawn. Your comments are invited either for revision of this standard or for additional standards and should be addressed to ASTM International Headquarters. Your comments will receive careful consideration at a meeting of the responsible technical committee, which you may attend. If you feel that your comments have not received a fair hearing you should make your views known to the ASTM Committee on Standards, at the address shown below.

This standard is copyrighted by ASTM International, 100 Barr Harbor Drive, PO Box C700, West Conshohocken, PA 19428-2959, United States. Individual reprints (single or multiple copies) of this standard may be obtained by contacting ASTM at the above address or at 610-832-9585 (phone), 610-832-9555 (fax), or service@astm.org (e-mail); or through the ASTM website (www.astm.org). Permission rights to photocopy the standard may also be secured from the Copyright Clearance Center, 222 Rosewood Drive, Danvers, MA 01923, Tel: (978) 646-2600; http://www.copyright.com/