



# Standard Test Method for Oxidation Stability of Middle Distillate Fuels—Rapid Small Scale Oxidation Test (RSSOT)<sup>1</sup>

This standard is issued under the fixed designation D7545; the number immediately following the designation indicates the year of original adoption or, in the case of revision, the year of last revision. A number in parentheses indicates the year of last reappraisal. A superscript epsilon ( $\epsilon$ ) indicates an editorial change since the last revision or reappraisal.

## 1. Scope\*

1.1 This laboratory test method covers a quantitative determination of the stability of middle distillate fuels such as diesel fuels and heating oils, with up to 100% biodiesel, under accelerated oxidation conditions, by an automatic instrument.

NOTE 1—This test method is technically equivalent to test method EN 16091

1.2 This test method is designed for products complying with Specification [D975](#) on Diesel Fuel, Grades No. 1D and 2D; Specification [D396](#) on Burner Fuel, Grades No. 1 and No. 2; Specification [D6751](#) on Biodiesel, B100, and Specification [D7467](#) on Diesel Fuel Oil, B6 to B20.

1.3 This test method measures the induction period, under specified conditions, which can be used as an indication of the oxidation and storage stability of middle distillate fuels.

1.4 The values stated in SI units are to be regarded as standard. No other units of measurement are included in this standard.

1.5 *This standard does not purport to address all of the safety concerns, if any, associated with its use. It is the responsibility of the user of this standard to establish appropriate safety and health practices and determine the applicability of regulatory limitations prior to use.*

## 2. Referenced Documents

2.1 *ASTM Standards:*<sup>2</sup>

[D396](#) Specification for Fuel Oils

[D975](#) Specification for Diesel Fuel Oils

[D4057](#) Practice for Manual Sampling of Petroleum and Petroleum Products

[D4177](#) Practice for Automatic Sampling of Petroleum and Petroleum Products

<sup>1</sup> This test method is under the jurisdiction of ASTM Committee D02 on Petroleum Products, Liquid Fuels, and Lubricants and is the direct responsibility of Subcommittee D02.14 on Stability and Cleanliness of Liquid Fuels.

Current edition approved Jan. 1, 2014. Published January 2014. Originally approved in 2009. Last previous edition approved in 2013 as D7545 – 13. DOI: 10.1520/D7545-14.

<sup>2</sup> For referenced ASTM standards, visit the ASTM website, [www.astm.org](http://www.astm.org), or contact ASTM Customer Service at [service@astm.org](mailto:service@astm.org). For *Annual Book of ASTM Standards* volume information, refer to the standard's Document Summary page on the ASTM website.

[D6751](#) Specification for Biodiesel Fuel Blend Stock (B100) for Middle Distillate Fuels

[D7467](#) Specification for Diesel Fuel Oil, Biodiesel Blend (B6 to B20)

2.2 *Other Standards:*

[CEN/TR 16366:2012](#) Liquid Petroleum Products—Middle Distillates and Fatty Acid Methyl Ester (FAME) Fuels and Blends—Round Robin Report on Applicability of Rapid Small Scale Oxidation Test Method<sup>3</sup>

[EN 590](#) Automotive Fuels—Diesel—Requirements and Test Methods<sup>3</sup>

[EN 16091](#) Liquid Petroleum Products—Middle Distillates and Fatty Acid Methyl Ester (FAME) Fuels and Blends—Determination of Oxidation Stability by Rapid Small Scale Oxidation Method<sup>3</sup>

[ISO 4259](#) Petroleum Products—Determination and Application of Precision Data in Relation to Methods of Test<sup>4</sup>

## 3. Terminology

3.1 *Definitions of Terms Specific to This Standard:*

3.1.1 *break point, n*—pressure in the test apparatus which is 10 % below the maximum pressure of the actual test run.

3.1.2 *induction period, n*—time elapsed between starting the heating procedure of the sample vessel and the break point, measured in minutes.

## 4. Summary of Test Method

4.1 A 5 mL sample is introduced into a pressure vessel which is then charged with oxygen to 700 kPa at ambient temperature. The test is initiated by starting the heater and heating the pressure vessel to a temperature of 140°C.

4.2 The pressure is recorded continuously until the break-point is reached. Alternatively, the test may be terminated when a minimum specification requirement is reached.

## 5. Significance and Use

5.1 The induction period may be used as an indication of the oxidation and storage stability of middle distillate fuel.

<sup>3</sup> Available from European Committee for Standardization (CEN), Avenue Marnix 17, B-1000, Brussels, Belgium, <http://www.cen.eu>.

<sup>4</sup> Available from International Organization for Standardization (ISO), 1, ch. de la Voie-Creuse, CP 56, CH-1211 Geneva 20, Switzerland, <http://www.iso.org>.

\*A Summary of Changes section appears at the end of this standard

5.2 Compared to some other oxidation and storage stability test methods, this method uses a small sample and gives a result in a short time period.

## 6. Apparatus

6.1 *General*—This test method uses an automatically controlled oxidation tester<sup>5</sup> (see Fig. 1) comprising an oxidation pressure vessel containing a test sample cup capable of being rapidly heated, fitted with a pressure sensor capable of measuring pressures up to 2000 kPa and a temperature sensor capable of reading to 0.1°C.

6.1.1 Pressure and temperature in the oxidation vessel are recorded continuously during the test. The oxidation pressure vessel is fitted with filling and relief-valves and a means of automatically releasing the pressure. The integrated cooling fan cools the pressure vessel from the test temperature to ambient temperature by a flow of air. See Annex A1 for detailed information.

6.2 *Volumetric Device*—Clean and free from contaminations of previous samples, capable of delivering  $5.0 \pm 0.1$  mL.

6.3 *Temperature Calibration Equipment*—Comprising a cover and a temperature calibration sensor (Fig. 2). The temperature calibration sensor is fixed to a depth of  $15 \pm 0.5$  mm. The temperature calibration sensor, calibrated to the nearest 0.1°C, is calibrated by an approved calibration service, such as one that is traceable to the National Institute of Standards and Technology (NIST) or to a national authority in the country in which the equipment is used or manufactured.

6.4 *Pressure Calibration Equipment*—Comprising a pressure calibration sensor (Fig. 3). The pressure calibration sensor is calibrated to the nearest 10 kPa by an approved calibration service, such as one that is traceable to the National Institute of Standards and Technology (NIST) or to a national authority in the country in which the equipment is used or manufactured.

## 7. Reagents and Materials

7.1 Solvent for the removal of oxidation residues from the test vessel. The solvent shall be of suitable purity to leave no residue on the apparatus. Ethanol of 94% minimum purity has been found to be suitable. Other solvents, such as a mixture of equal volumes of toluene and acetone, may be used if shown to meet the requirements for the removal of oxidation residues from the test vessel without leaving any residue in the sample test cup.

7.2 *Oxygen*—Commercially available extra-dry oxygen of not less than 99.6% purity.

7.3 *Lint-free Cleaning Tissue*—For sensitive surfaces and that will not scratch the surface.

7.4 “O -ring” Seal—See A1.2.

<sup>5</sup> The sole source of supply of the apparatus known to the committee at this time is Anton Paar’s PetroOxy apparatus, available from Anton Paar ProveTec GmbH, Ludwig-Erhard-Ring 13,15827 Dahlewitz, Germany. If you are aware of alternative suppliers, please provide this information to ASTM International Headquarters. Your comments will receive careful consideration at a meeting of the responsible technical committee,<sup>1</sup> which you may attend.

7.5 *Temperature Calibration Fluid*—Stable middle distillate liquid with a flash point above +60°C and a boiling point above +150°C.

## 8. Hazards

8.1 (**Warning**—To provide protection against possible explosive rupture of the pressure vessel and hazards relating to hot and flammable fuels, the apparatus shall be operated behind an appropriate safety shield.)

## 9. Sampling

9.1 Sample in accordance with Practice D4057 or D4177.

## 10. Preparation of Apparatus

10.1 Remove the previous sample by means of a pipette or similar device.

10.2 Remove the used “O-ring” seal and discard.

NOTE 2—To avoid contamination of the new test, it is necessary to discard the used “O-ring” seal, because it might be soaked with oxidation products from the previous test.

10.3 Wipe the test sample cup, the seal groove and the cover of the test vessel with lint-free cleaning tissue (7.3) soaked with solvent until free of gum or other oxidation residues.

10.4 Allow the test sample cup and cover to dry in air and visually inspect for cleanliness.

NOTE 3—Compressed air is generally unsuitable to speed up evaporation of solvent because it can contain traces of oil that could contaminate the next test.

10.5 Insert a new “O-ring” seal.

## 11. Calibration

11.1 Recalibrate the tester every 12 months for correct temperature and pressure detection.

11.2 *Calibration of Temperature Indicator*—Calibrate the temperature sensor (A1.6) to the nearest 0.1°C using the temperature calibration equipment (6.3) according to A2.1.

11.3 *Calibration of Pressure Detector*—Calibrate the pressure sensor (A1.5) to the nearest 10 kPa, using the pressure calibration equipment (6.4) according to A2.2.

11.4 Verify, at least every 3 months, that the heater is operating properly and the pressure vessel is reaching  $140 \pm 0.5$ °C within 5 min.

## 12. Procedure

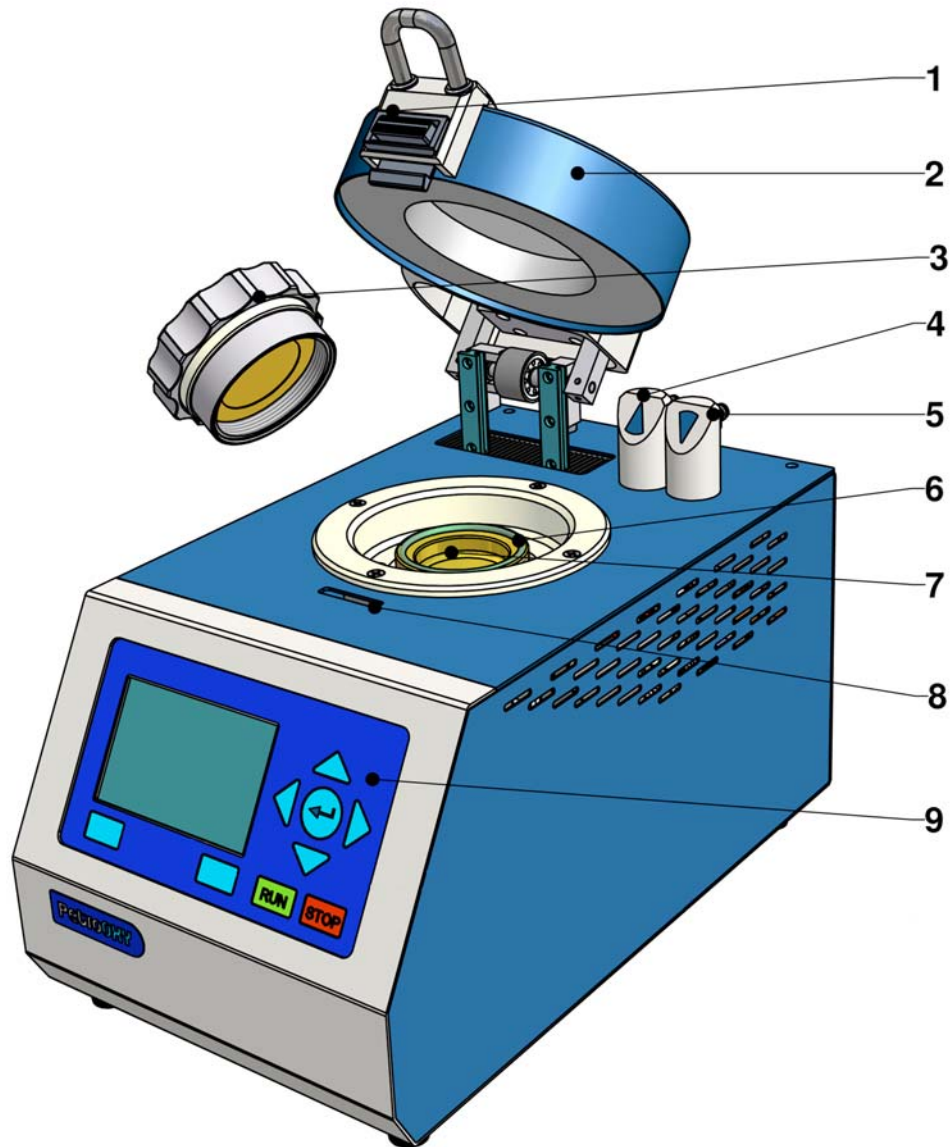
12.1 Switch the apparatus on. Bring the pressure vessel and the fuel specimen to be tested to a temperature of 15 to 25°C.

12.2 Using a volumetric device (6.2), place  $5 \pm 0.1$  mL of the sample into the test sample cup (Fig. 1, item 7).

12.3 Cover the test sample cup with the screw-cap (Fig. 1, item 3) and close the pressure vessel.

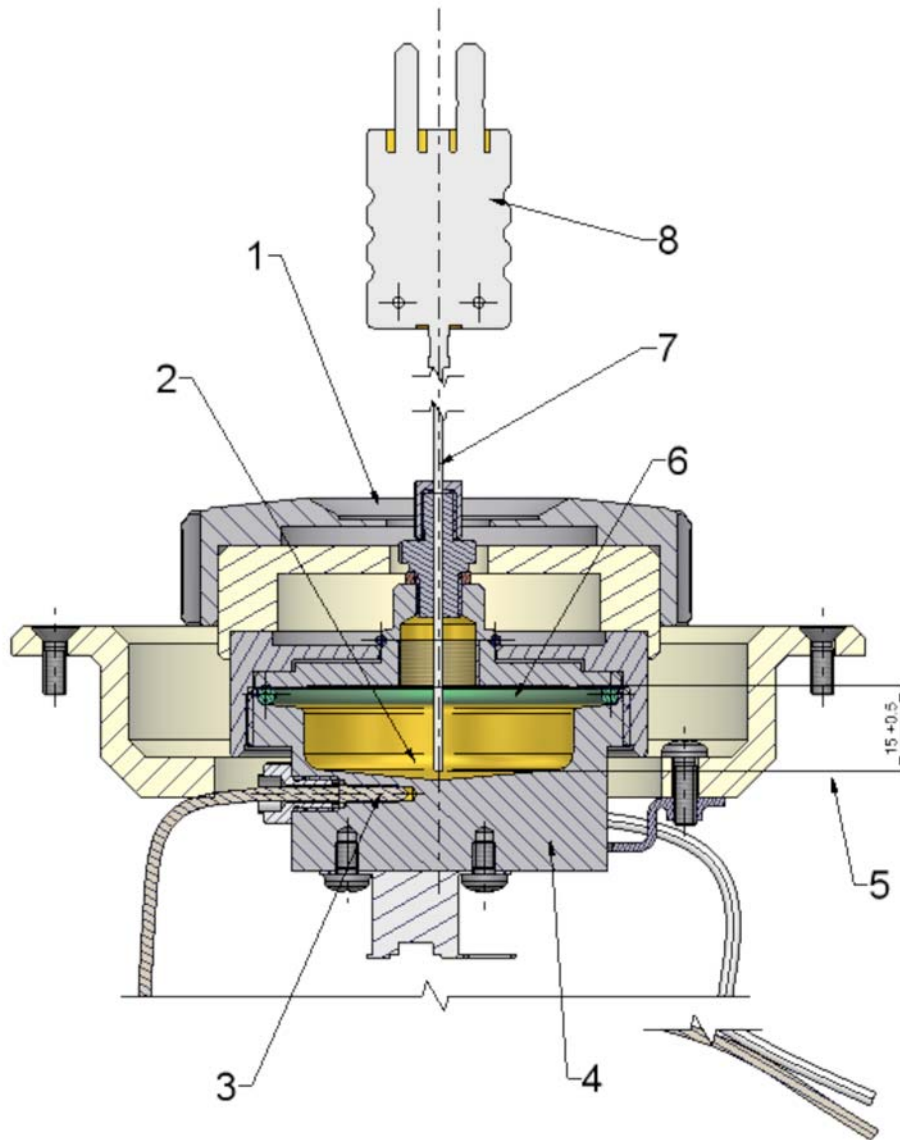
12.4 Introduce oxygen (7.2) into the pressure vessel until a pressure of  $700 \pm 5$  kPa is attained and stabilized over 20 s.

12.5 Start the heater with no delay between charging with oxygen and starting the test. The apparatus automatically starts the timer.



1. Unlocking mechanism for insulating hood
2. Safety and insulating hood
3. Screw cap for closing the test container
4. Oxygen outlet
5. Oxygen inlet
6. "O-ring" seal for test sample cup
7. Test sample cup
8. Locking mechanism for insulating hood
9. Operating panel with display

**FIG. 1 Schematic of Apparatus for Rapid Small Scale Oxidation Test**



1. Calibration cover with duct for temperature calibration sensor
2. Calibration fluid
3. Temperature sensor for block temperature
4. Heating block
5. Immersion depth of temperature calibration sensor and bottom of calibration cover
6. Seal
7. Temperature calibration sensor
8. Connector plug to measuring device

**FIG. 2 Temperature Calibration Equipment**

12.6 The apparatus brings the oxidation pressure vessel and test specimen to  $140 \pm 0.5^\circ\text{C}$  within 5 min.

12.7 If, during the initial 5 min of the test, a steady drop in pressure is observed, discontinue the test and discard the test specimen.

12.7.1 Under no circumstances may the leakage rate exceed a value of 2 kPa/h. If the leakage rate shows an increase, check the following components: O-ring for damage or residues of samples; surface of the sample cup for damage; sample cup for sample residues.

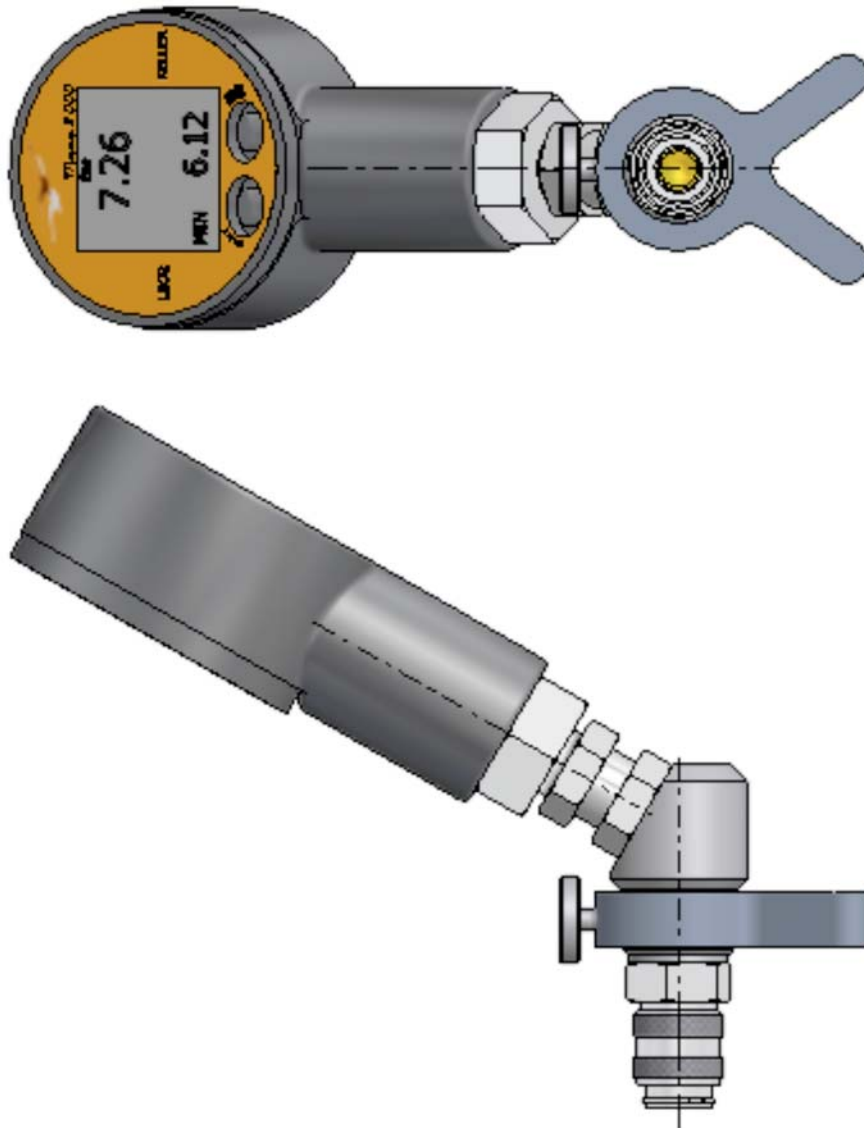


FIG. 3 Pressure Calibration Equipment

12.7.2 Contact the manufacturer to resolve leakage problems from other parts of the instrument.

12.8 The apparatus automatically records the temperature (to the nearest 0.1°C) and pressure (to the nearest 1 kPa) of the oxidation vessel continuously.

12.9 The test apparatus will automatically terminate the test when the pressure readings show a 10% drop from the maximum observed pressure. This is the breakpoint.

12.10 Record the induction period to the nearest 1 min.

12.11 Alternatively, terminate the test when the test time exceeds a predetermined minimum requirement.

NOTE 4—The apparatus will automatically switch on the fan to cool the pressure vessel to approximately room temperature. When the apparatus

has cooled sufficiently, the apparatus automatically releases the pressure slowly from the pressure vessel through the valve at a rate not exceeding 345 kPa/min. When the pressure release process has finished, open the apparatus and clean according Section 10.

### 13. Report

13.1 Report the induction period to the nearest whole minute, and reference this test method. If the test was stopped (12.11) prior to observing the pressure drop required in 12.9, report induction period (referencing this test method) as greater than N minutes, where N is the predetermined minimum time within the induction period.

### 14. Precision and Bias

14.1 *Precision:*



14.1.1 The precision statements below were developed from data for EN 16091, which is technically identical to this test method.

14.1.2 The data were developed in round robin tests in 2008 and 2009 supervised by the technical committee CEN/TC19/JWG1 and in accordance with ISO 4259. Samples in the round robins included B100 (FAME), B0, B5, B7, B10 and B30 samples. The induction periods measured were between 22 min to 215 min.

14.1.3 The samples had been prepared by blending of B0 which meets the requirements of the EN 590 with a sulfur contents below 15 mg/kg only with other fuels such that the resulting final blends for B5 and B7 also met the requirements of EN 590. Other samples all contained less than 15 mg/kg sulfur. Since Specifications **D396** and **D975** both include grades with sulfur above 15 mg/kg, these precision statements are not based on samples with sulfur contents in the range of all specification grades. The effect of sulfur contents or other associated differences in fuels will have on the precision of this test method is unknown.

14.1.4 *Repeatability*—The difference between successive test results, obtained by the same operator using the same apparatus under constant operating conditions on identical test material, would in the long run, in the normal and correct operation of this test method, exceed the following only in one case in twenty.

$$r = 0.0288X + 0.4965 \quad (1)$$

where:

$X$  = the mean of the two test results expressed in minutes, rounded to the nearest 0.01 min.

14.1.5 *Reproducibility*—The difference between two single and independent test results obtained by different operators working in different laboratories, on identical material, would in long run, in the normal and correct operation of this test method, exceed the following only in one case in twenty.

$$R = 0.0863X + 1.3772 \quad (2)$$

where:

$X$  = the mean of the two test results expressed in minutes, rounded to the nearest 0.01 min.

NOTE 5—The precision statements are from an approved technical report CEN/TR 16366:2012 and can be obtained from CEN (European Committee for Standardization).

14.2 *Bias*—Since the value of oxidation stability measured by this test method is defined solely by this test method, no statement of bias can be made.

## 15. Keywords

15.1 breakpoint; diesel fuel; biodiesel; induction period; middle distillate fuels; oxidation stability; oxygen uptake

## ANNEXES

### (Mandatory Information)

#### A1. AUTOMATICALLY CONTROLLED OXIDATION TESTER

##### A1.1 Pressure Vessel and Closure

A1.1.1 Internal volume without sample: 20 mL. Inner diameter:  $47 \pm 0.15$  mm.

A1.1.2 Made of corrosion-resistant material and constructed to withstand a working pressure of 1800 kPa.

A1.1.3 Interior surfaces: smooth (polished), chemically inert surface to facilitate cleaning and prevent corrosion.

##### A1.2 “O-ring”

A1.2.1 Seal for test sample cup.

A1.2.2 Made of material being resistant to oxygen, middle distillate fuel components and heat, typically fluoro-elastomer FPM/FKM (commonly known as Viton<sup>6</sup>), coated with PTFE.

##### A1.3 Heating

A1.3.1 Installed power rating: 500 W. Typically electric heating, near the bottom of the pressure vessel, facilitates best heat transfer to the sample.

A1.3.2 The heater control shall be capable of maintaining the test cup temperature within  $\pm 0.5^\circ\text{C}$  at the test temperatures of  $140^\circ\text{C}$ .

##### A1.4 Valves

A1.4.1 Solenoid valves with small dead volume and orifice sizes and short cycling rates

##### A1.5 Pressure Sensor

A1.5.1 Absolute or relative pressure transducer.

A1.5.2 Pressure range: 0 to 2000 kPa (min). Accuracy  $\pm 3\%$  full scale span. Typical sensitivity: 1 to 25 mV/kPa.

<sup>6</sup>Registered trademark of DuPont Performance Elastomers, 300 Bellevue Parkway, Suite 300, Wilmington, DE 19809.

### **A1.6 Temperature Sensor**

A1.6.1 Platinum resistance thermometer, accuracy  $\pm(0.1 + 0.0017 \times (t))$ , where (t) is the actual temperature in °C, range up to 200°C.

### **A1.7 Connecting Pipes**

A1.7.1 Small orifices, typical inner diameter: 0.5 to 1.0 mm.

### **A1.8 Cooling Fan**

A1.8.1 Capable of cooling the pressure vessel from the test temperature to ambient temperature by applying a stream of air to the outside of the pressure vessel.

### **A1.9 General Requirements**

A1.9.1 All equipment in contact with the sample and oxygen shall be made of corrosion-resistant materials.

A1.9.2 The pressure vessel shall have an over-temperature safeguard.

A1.9.3 A cooling device for rapid cooling is recommended.

A1.9.4 A safety and isolation hood above the pressure vessel closure is recommended (see Fig. 1).

## **A2. INSTRUMENT CALIBRATION**

### **A2.1 Temperature Calibration**

A2.1.1 Calibrate temperature sensor (A1.6) at ambient and at 140°C concerning offset and gain, in accordance with the manufacturer's manual.

A2.1.2 Fill the cup with  $10 \pm 0.1$  mL of the calibration fluid (7.5).

A2.1.3 Ensure that the temperature calibration sensor's depth is fixed at  $15 \pm 0.5$  mm (Fig. 2, item 5).

A2.1.4 Cover the test sample cup with the temperature calibration equipment (6.3) (Fig. 2).

A2.1.5 When the temperature is stabilized, record the temperatures indicated by the temperature sensor (A1.6) and the temperature calibration sensor.

A2.1.6 Calculate offset and gain according to manufacturer's manual and change, if required, according to manufacturer's manual.

### **A2.2 Pressure Calibration**

A2.2.1 Calibrate the pressure sensor (A1.5) at two pressures.

A2.2.2 Cover the empty sample cup with the screw-cap (Fig. 1, item 3).

A2.2.3 Connect the oxygen filling line to the instrument and pressurize the test cell to 700 kPa.

A2.2.4 Close the filling valve, remove the oxygen filling line and replace it by the calibration equipment (Fig. 3) (6.4).

A2.2.5 Start the calibration procedure in accordance with the manufacturer's manual.

A2.2.6 Open the valve to the pressure calibration sensor. Pressure will slightly drop.

A2.2.7 Record the pressures indicated by the pressure sensor (A1.5) and the pressure calibration sensor.

A2.2.8 Close the valve to the pressure calibration equipment (6.4).

A2.2.9 Reduce the pressure in the test cell to approximately 20 kPa, and open the valve to the calibration equipment. Pressure will slightly increase to 90 to 100 kPa.

A2.2.10 Record the pressures indicated by the pressure sensor (A1.5) and the pressure calibration sensor.

A2.2.11 Release the pressure.

A2.2.12 Calculate offset and gain according to the manufacturer's manual and change if required according to manufacturer's manual.

**SUMMARY OF CHANGES**

Subcommittee D02.14 has identified the location of selected changes to this standard since the last issue (D7545 – 13) that may impact the use of this standard. (Approved Jan. 1, 2014.)

(1) Added new **Note 1**.

Subcommittee D02.14 has identified the location of selected changes to this standard since the last issue (D7545 – 09) that may impact the use of this standard. (Approved Oct. 1, 2013.)

(1) Added new **14.1.1 – 14.1.5**.

(2) Added new **Note 5** following **14.1.5**.

(3) Added CEN/TR 16366:2012, EN 16091, ISO 4259, and EN 590 to Section **2**, Referenced Documents.

*ASTM International takes no position respecting the validity of any patent rights asserted in connection with any item mentioned in this standard. Users of this standard are expressly advised that determination of the validity of any such patent rights, and the risk of infringement of such rights, are entirely their own responsibility.*

*This standard is subject to revision at any time by the responsible technical committee and must be reviewed every five years and if not revised, either reapproved or withdrawn. Your comments are invited either for revision of this standard or for additional standards and should be addressed to ASTM International Headquarters. Your comments will receive careful consideration at a meeting of the responsible technical committee, which you may attend. If you feel that your comments have not received a fair hearing you should make your views known to the ASTM Committee on Standards, at the address shown below.*

*This standard is copyrighted by ASTM International, 100 Barr Harbor Drive, PO Box C700, West Conshohocken, PA 19428-2959, United States. Individual reprints (single or multiple copies) of this standard may be obtained by contacting ASTM at the above address or at 610-832-9585 (phone), 610-832-9555 (fax), or service@astm.org (e-mail); or through the ASTM website (www.astm.org). Permission rights to photocopy the standard may also be secured from the ASTM website (www.astm.org/COPYRIGHT/).*