



Standard Test Methods for Determining Dispersive Characteristics of Clayey Soils by the Crumb Test¹

This standard is issued under the fixed designation D6572; the number immediately following the designation indicates the year of original adoption or, in the case of revision, the year of last revision. A number in parentheses indicates the year of last reapproval. A superscript epsilon (ϵ) indicates an editorial change since the last revision or reapproval.

^{ε1} NOTE—Editorial corrections made throughout in February 2014.

^{ε2} NOTE—Editorially corrected Footnote 1 in April 2016.

1. Scope*

1.1 Two test methods are provided to give a qualitative indication of the natural dispersive characteristics of clayey soils: Method A and Method B.

1.1.1 *Method A*—Procedure for Natural Soil Crumbs described in 10.2.

1.1.2 *Method B*—Procedure for Remolded Soil Crumbs described in 10.3.

1.2 The crumb test, while a good, quick indication of dispersive soil, should usually be run in conjunction with a pinhole test and a double hydrometer test, Test Methods D4647 and D4221, respectively.

1.3 The crumb test has some limitations in its usefulness as an indicator of dispersive soil. A dispersive soil may sometimes give a non-dispersive reaction in the crumb test. Soils containing kaolinite with known field dispersion problems, have shown non-dispersive reactions in the crumb test (1).² However, if the crumb test indicates dispersion, the soil is probably dispersive.

1.4 These test methods are not applicable for soils with 12 % or less of the particles passing 0.005 mm and having a plasticity index less than or equal to 8, as determined by Test Method D4318.

1.5 Oven-dried soil should not be used to prepare crumb test specimens, as irreversible changes could occur to the soil pore-water physicochemical properties responsible for dispersion (2).

NOTE 1—In some cases, the results of the pinhole, crumb, and double-hydrometer test methods may disagree. The crumb test is a better indicator of dispersive soils than of non-dispersive soils (3).

¹ These test methods are under the jurisdiction of ASTM Committee D18 on Soil and Rock and are the direct responsibility of Subcommittee D18.06 on Physical-Chemical Interactions of Soil and Rock

Current edition approved Nov. 1, 2013. Published November 2013. Originally approved in 2000. Last previous edition approved in 2012 as D6572 – 12. DOI: 10.1520/D6572-13E02.

² The boldface numbers in parentheses refer to the list of references at the end of this standard.

1.6 All observed and calculated values shall conform to the guidelines for significant digits and rounding established in Practice D6026.

1.6.1 The procedures used to specify how data are collected/recorded or calculated in this standard are regarded as the industry standard. In addition, they are representative of the significant digits that generally should be retained. The procedures used do not consider material variation, purpose for obtaining the data, special purpose studies, or any considerations for the user's objectives; and it is common practice to increase or reduce significant digits of reported data to be commensurate with these considerations. It is beyond the scope of this standard to consider significant digits used in analytical methods for engineering design.

1.7 *Units*—The values stated in SI units are to be regarded as standard. No other units of measurement are included in this standard.

1.8 *This standard does not purport to address all of the safety concerns, if any, associated with its use. It is the responsibility of the user of this standard to establish appropriate safety and health practices and determine the applicability of regulatory limitations prior to use.*

2. Referenced Documents

2.1 *ASTM Standards*:³

D653 Terminology Relating to Soil, Rock, and Contained Fluids

D1193 Specification for Reagent Water

D2216 Test Methods for Laboratory Determination of Water (Moisture) Content of Soil and Rock by Mass

D3740 Practice for Minimum Requirements for Agencies Engaged in Testing and/or Inspection of Soil and Rock as Used in Engineering Design and Construction

D4221 Test Method for Dispersive Characteristics of Clay Soil by Double Hydrometer

³ For referenced ASTM standards, visit the ASTM website, www.astm.org, or contact ASTM Customer Service at service@astm.org. For *Annual Book of ASTM Standards* volume information, refer to the standard's Document Summary page on the ASTM website.

*A Summary of Changes section appears at the end of this standard

- D4318 Test Methods for Liquid Limit, Plastic Limit, and Plasticity Index of Soils
- D4647 Test Method for Identification and Classification of Dispersive Clay Soils by the Pinhole Test
- D6026 Practice for Using Significant Digits in Geotechnical Data
- E1 Specification for ASTM Liquid-in-Glass Thermometers
- E11 Specification for Woven Wire Test Sieve Cloth and Test Sieves
- E2251 Specification for Liquid-in-Glass ASTM Thermometers with Low-Hazard Precision Liquids

indicator of the presence of dispersive properties in a soil. The crumb test, however, is not a completely reliable negative indicator that soils are not dispersive. The crumb test can seldom be relied upon as a sole test method for determining the presence of dispersive clays. The double-hydrometer test (Test Method D4221) and pinhole test (Test Method D4647) are test methods that provide valuable additional insight into the probable dispersive behavior of clay soils.

NOTE 2—The quality of the result produced by these test methods is dependent on the competence of the personnel performing it, and the suitability of the equipment and facilities used. Agencies that meet the criteria of Practice D3740 are generally considered capable of competent and objective testing. Users of these test methods are cautioned that compliance with Practice D3740 does not in itself ensure reliable results. Reliable results depends on several factors; Practice D3740 provides a means of evaluating some of those factors.

3. Terminology

3.1 Definitions:

3.1.1 For definitions of common technical terms in this standard, refer to Terminology D653.

3.2 Definitions of Terms Specific to This Standard:

3.2.1 *dispersive clays*—a type of soil that disaggregates easily and rapidly, without significant mechanical assistance, in water of low-salt concentration.

3.2.1.1 *Discussion*—Such soils usually have a high proportion of their adsorptive capacity saturated with sodium cations although adsorbed lithium and magnesium may also play a role (4). Such soils also generally have a high shrink-swell potential, have low resistance to erosion, and have low permeability in an intact state.

4. Summary of Test Method

4.1 A cube of remolded soil with approximately 15 ± 5 mm on each side (about the size of a single die in a pair of dice) or a natural soil crumb of approximately similar volume is placed on the bottom of a 300-mL container containing 250 mL of Type IV water.

4.2 The temperature of the water is recorded and visual determinations of the dispersion grade are made and recorded at $2 \text{ min} \pm 15 \text{ s}$, $1 \text{ h} \pm 8 \text{ min}$, and $6 \text{ h} \pm 45 \text{ min}$. Determination of grade is based on the formation, extent, and turbidity of a dense “cloud” or halo of colloidal-sized particles extending from the soil crumb.

4.3 Determinations consist of: Grade 1 (Non-Dispersive), Grade 2 (Intermediate), Grade 3 (Dispersive), and Grade 4 (Highly Dispersive).

5. Significance and Use

5.1 The crumb test provides a simple, quick method for field or laboratory identification of a dispersive clayey soil. The internal erosion failures of a number of homogeneous earth dams, erosion along channel or canal banks, and rainfall erosion of earthen structures have been attributed to colloidal erosion along cracks or other flow channels formed in masses of dispersive clay (5).

5.2 The crumb test, as originally developed by Emerson (6), was called the aggregate coherence test and had seven different categories of soil-water reactions. Sherard (5) later simplified the test by combining some soil-water reactions so that only four categories, or grades, of soil dispersion are observed during the test. The crumb test is a relatively accurate positive

6. Interferences

6.1 Oven-dried soil shall not be used in performing the crumb test as irreversible changes could occur to the soil pore-water physicochemical properties responsible for dispersion (2).

6.2 The use of water other than Type IV in accordance with Specification D1193, can interfere with dispersion of the colloidal clay particles.

6.3 The cube or crumb shall be carefully placed directly on the bottom of the dish when submerging the crumb. Dropping the crumb from the water surface can cause excessive slaking and may result in erroneous interpretation of the dispersion grade.

6.4 Jarring or moving the soil specimen or container once the test method has begun can cause excessive turbidity and may result in erroneous interpretation of the dispersion grade.

6.5 The use of a single, natural, irregular-shaped soil crumb may result in a specimen that is not representative of the total sample. Therefore, several crumb test specimens should be selected to make sure that representative test results are obtained. The total number of test specimens should be determined during the test program and will depend on the degree of agreement of individual test results.

6.6 These test methods are not applicable to soils with 12 % or less of the particles passing 0.005 mm and having a plasticity index less than or equal to 8, as determined by Test Method D4318.

7. Apparatus

7.1 *Specimen Container*—A white or clear, non-porous, glass or equivalent inert container with a minimum capacity of 300 mL and having a flat bottom of at least 85-mm across. The container shall be large enough to allow for the specimen to be fully immersed when placed in the container.

7.2 *Thermometer*—0 to 50°C range, 0.1°C divisions, conforming to the requirements of Specification E1. Temperature measuring devices, such as RTDs, thermistors, or liquid-in-glass thermometers (for example, Specification E2251) conforming to Specification E1 and the temperature range and accuracy, may be used.

7.3 *Sieve(s)*, 4.75-mm (No. 4) and 2-mm (No. 10) sieve, in accordance with Specification E11.

7.4 *Timing Device*—A clock, stopwatch, digital timer, or alike readable to 1 second or better.

8. Reagents and Materials

8.1 *Purity of Water*—Type IV water in accordance with Specification D1193 or distilled water with a pH between 5.5 and 7.0 should be used for conducting the test methods and preparing remolded specimens. Distilled water is preferred.

9. Sampling

9.1 *Sampling*—Obtain a representative, homogenous soil sample passing the 4.75-mm (No. 4) sieve. Depending on the percentage of coarse sand in the material, approximately 25 to 75 g of material is needed to perform a crumb test. If using Method A, more material may be needed in order to make sure representative test results are obtained. Material for the crumb test should be selected as soon as possible after obtaining the representative sample as discussed in 10.1.

NOTE 3—Approximately 400 to 500 g of material is needed to perform the crumb, pinhole, and double hydrometer tests.

9.1.1 Determine the water content of the sample prior to specimen(s) preparation according to Test Method D2216 and record to the nearest 0.1 %. Record the qualitative state used in the determination such as, in situ, as-received or air-dried.

10. Test Specimen(s)

10.1 Preserve the test specimen(s) at the in situ or as-received water content, if possible, or allowed to air-dry. Do not oven dry the test specimen(s).

10.2 Method A—Natural Soil Crumbs:

10.2.1 Select one or more natural, irregularly shaped, soil crumbs from the sample obtained in Section 9 with an abundance of aggregated soil lumps suitable for crumb test specimens. This soil crumb should be approximately the same volume as a cube with 15 ± 5 mm on each side (about the size of a single die or a pair of dice). If no one crumb is equivalent to this size cube, a series of smaller cubes can be used. The crumb volume should not be less than equivalent to a cube with 7 ± 3 mm on each side. Record the test specimen identification information and begin the test as soon as practicable after obtaining the test specimen(s).

10.2.2 Use of natural soil crumbs may result in a specimen that is not representative of the total sample; therefore, it is recommended that several crumb specimens be tested to make sure the total sample is represented. The number chosen is dependent on the homogeneity of the total sample.

10.3 Test Method B—Remolded Soil Crumbs:

10.3.1 Process the sample over a 2-mm (No. 10) sieve and retain the material passing the 2-mm (No. 10) sieve.

10.3.2 Prepare a test specimen from the material passing the 2-mm (No. 10) sieve by lightly compressing a moist soil sample into a cube approximately 15 ± 5 mm on each side. Use the thumbs and index finger to gently form the cube.

Record the test specimen identification information and begin the test as soon as practicable after obtaining the test specimen(s).

10.4 If the crumb test is performed in conjunction with the pinhole test (Test Method D4647), the cube can be prepared from material cured to the moisture content desired for compacting the pinhole specimen. Alternatively, air-dried soil or soil at the natural moisture can be passed through a 2-mm (No. 10) sieve and formed into the cube. If additional moisture is needed to form the cube, Type IV or distilled water can be added until the cube can be formed.

11. Procedure

11.1 For either Method, place the specimen container described in 7.1 on a horizontal working surface, which will be relatively free of vibration for the next $6 \text{ h} \pm 45 \text{ min}$.

11.2 Pour approximately 250-mL of Type IV or distilled water into the container and allow the water temperature to equalize to $21 \pm 6^\circ\text{C}$. This temperature shall be maintained throughout the test.

11.3 Verify the water temperature has equalized prior to placing the specimen in the water. Record the temperature to the nearest 0.1°C .

11.4 Record the specimen container identification along with the test specimen that is placed in that container.

NOTE 4—Placing the container(s) on the top edge of the test form facilitates easy identification of a number of specimens and reduces the potential for misidentification.

11.5 Carefully place the specimen in the water and gently release it only after placing it directly on the bottom of the container. Do not move or vibrate the container or stir the water from specimen placement until the end of this test.

11.6 Record the time of specimen placement and start the timing device.

11.7 As the soil crumb begins to absorb water, observe the tendency for colloidal-sized particles to deflocculate and go into suspension.

NOTE 5—The colloidal-sized particles are visible in the form of a dense “cloud” or halo that extends from the soil crumb. The extent and turbidity of the suspended clay particle “cloud” is visually interpreted. The colloidal “cloud” is influenced by soil color; that is, dark soils produce a darker, more distinctly visible “cloud.”

11.8 Determine and record the dispersion grade, in accordance with the following criteria (Fig. 1), and temperature at $2 \text{ min} \pm 15 \text{ s}$, $1 \text{ hour} \pm 8 \text{ min}$, and $6 \text{ hours} \pm 45 \text{ min}$. Be careful to submerge the thermometer bulb without touching or disturbing the test specimen.

11.9 Carefully place the specimen in the water and gently release it only after placing it directly on the bottom of the dish. Do not move or vibrate the dish or stir the water from specimen placement until the end of this test method.

11.9.1 *Grade 1 (Non-dispersive)*—No reaction; the soil may crumble, slake, diffuse, and spread out, but there is no turbid water created by colloids suspended in the water. All particles settle during the first hour.

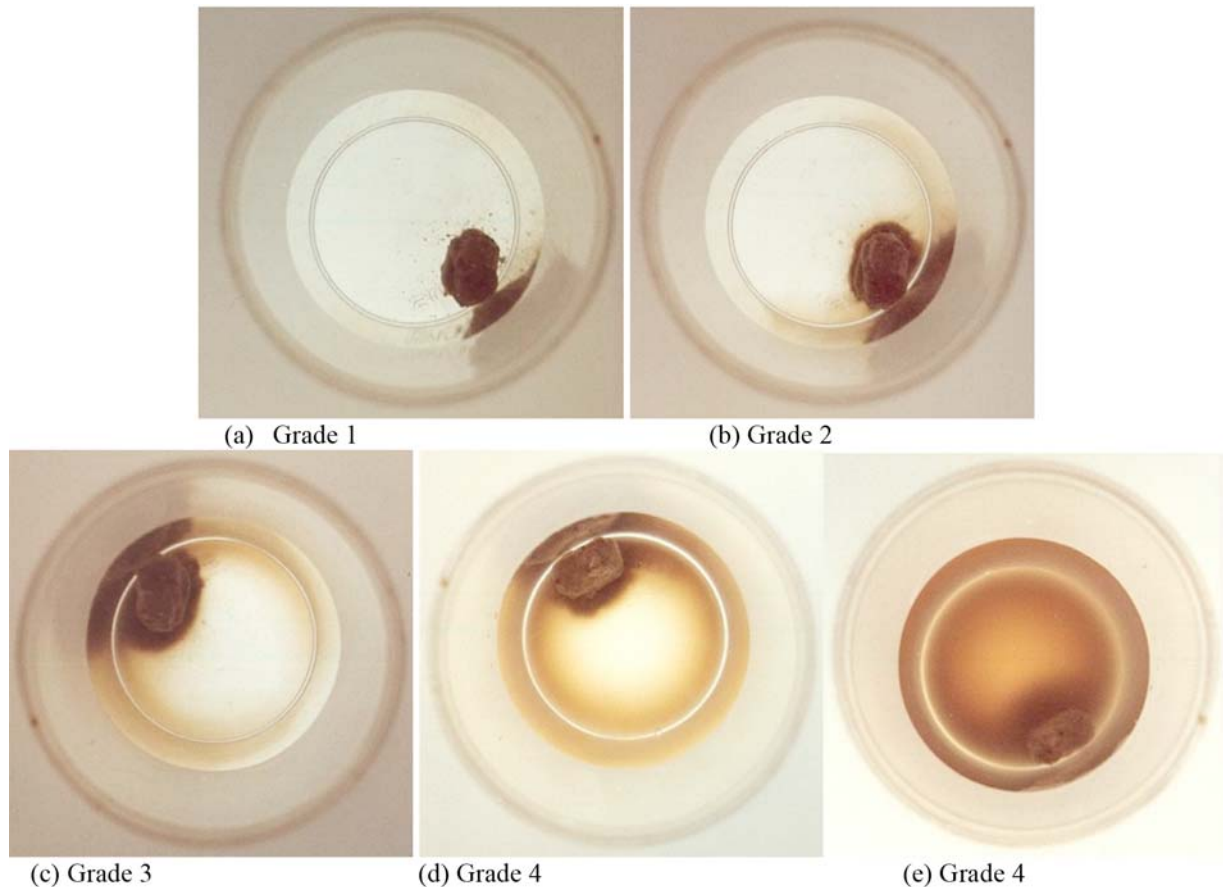


FIG. 1 Soil Crumb Specimens and Assigned Dispersion Grades (7)

11.9.2 *Grade 2 (Intermediate)*—Slight reaction; Grade 2 is the transition grade. A faint, barely visible colloidal suspension causes turbid water near portions of the soil crumb surface. If the cloud is easily visible, assign Grade 3. If the cloud is faintly seen in only one small area, assign Grade 1.

11.9.3 *Grade 3 (Dispersive)*—Moderate reaction; an easily visible cloud of suspended clay colloids is seen around the outside of the soil crumb surface. The cloud may extend up to 10 mm away from the soil crumb mass along the bottom of the dish.

11.9.4 *Grade 4 (Highly Dispersive)*—Strong reaction; a dense, profuse cloud of suspended clay colloids is seen around the entire bottom of the dish. Occasionally, the soil crumb dispersion is so extensive that it is difficult to determine the interface of the original soil crumb and the colloidal suspension. Often, the colloidal suspension is easily visible on the sides of the dish.

11.10 If a permanent record is desired, photograph the test specimen after the 6 hours \pm 45 min reading.

12. Interpretation of Results

12.1 Use the following criteria to classify crumb test results:

- 12.1.1 *Grade 1*—Nondispersive.
- 12.1.2 *Grade 2*—Intermediate.
- 12.1.3 *Grade 3*—Dispersive.
- 12.1.4 *Grade 4*—Highly Dispersive.

12.2 If the dispersive grade changed during the test, the 1 hour \pm 8 min reading is normally used for the overall test evaluation. However, if the grade changes from 2 to 3 or from 3 to 4 between the 1 hour \pm 8 min and 6 hours \pm 45 min readings, use the 6 hours \pm 45 min reading.

13. Report: Test Data Sheet(s)/Form(s)

13.1 The methodology used to specify how data are recorded on the test data sheet(s)/form(s) as given below, is covered in 1.6 and Practice D6026.

13.2 Record as a minimum the following general information (data):

- 13.2.1 Project name and, if known, the location of project.
- 13.2.2 Boring number, sample number, depth, color, and visual estimated classification of the material type.
- 13.2.3 Name or initials of the person performing the test and date of testing.

13.3 Record as a minimum the following test specimen data:

- 13.3.1 Method used, A or B.
- 13.3.2 Water content of the sample in % and the qualitative state (in situ, as-received, or air-dried).
- 13.3.3 If any additional water was added to form the cube as described in Method B.
- 13.3.4 Test Specimen identification.

- 13.3.5 Specimen container identification, if any.
- 13.3.6 Type of water used for testing: distilled or Type IV.
- 13.3.7 Initial temperature of the water.
- 13.3.8 Start time of the test (hh:mm:ss).
- 13.3.9 Grade number, temperature, and time readings.
- 13.3.10 Dispersive classification of the test specimen(s) as: nondispersive, intermediate, dispersive, or highly dispersive.

13.3.11 If desired, photographs of the test specimen(s) taken at the different time readings or just at the 6 hours \pm 45 min reading.

14. Precision and Bias

14.1 *Precision*—Test data on precision is not presented due to the nature of the soil materials tested by this test method. It is either not feasible or too costly at this time to have ten or

more laboratories participate in a round-robin testing program. Also, it is either not feasible or too costly to produce multiple specimens that have uniform physical properties. Any variation observed in the data is just as likely to be due to specimen variation as to operator or laboratory testing variation.

14.1.1 Subcommittee D18.06 is seeking any data from the users of this test method that might be used to make a limited statement on precision.

14.2 *Bias*—There is no accepted reference value for this test method, therefore, bias cannot be determined.

15. Keywords

15.1 clay (dispersive); colloidal erodibility; crumb test; dispersibility; dispersion; dispersive clays; erosion

APPENDIX

(Nonmandatory Information)

X1. EXAMPLE TEST DATA SHEET/FORM

X1.1 *General*—Two example data sheets are presented. Fig. X1.1 presents a blank data sheet that may be used to record the crumb test data. This data sheet was designed to accommodate one sample with multiple specimens; therefore there is only one water content value representing the single sample. In

some instances it may be necessary or reasonable to take additional water content determinations. Those additional water content values should also be recorded. Fig. X1.2 presents a completed example test data sheet.

CRUMB TEST (ASTM D6572)																																															
Project No.: _____				Project Name: _____				Location: _____																																							
Boring No.: _____				Sample No.: _____				Depth: _____ <input type="checkbox"/> ft <input type="checkbox"/> m																																							
Visual Classification: _____						Color: _____																																									
<table border="1" style="width: 100%; border-collapse: collapse;"> <thead> <tr> <th colspan="3">Moisture Content of Sample:</th> <th colspan="3">as-received</th> <th colspan="3">in situ</th> <th colspan="3">air-dried</th> </tr> <tr> <th>Tare Number</th> <th>Wet Mass + Tare (g)</th> <th>Dry Mass + Tare (g)</th> <th>Tare Mass (g)</th> <th>Water Content (%)</th> <th></th> <th></th> <th></th> <th></th> <th></th> <th></th> <th></th> </tr> </thead> <tbody> <tr> <td> </td> <td> </td> <td> </td> <td> </td> <td> </td> <td> </td> <td> </td> <td> </td> <td> </td> <td> </td> <td> </td> <td> </td> </tr> </tbody> </table>												Moisture Content of Sample:			as-received			in situ			air-dried			Tare Number	Wet Mass + Tare (g)	Dry Mass + Tare (g)	Tare Mass (g)	Water Content (%)																			
Moisture Content of Sample:			as-received			in situ			air-dried																																						
Tare Number	Wet Mass + Tare (g)	Dry Mass + Tare (g)	Tare Mass (g)	Water Content (%)																																											
Specimen Identification: _____			Specimen Identification: _____			Specimen Identification: _____			Specimen Identification: _____																																						
Spec. Container Identification: _____			Spec. Container Identification: _____			Spec. Container Identification: _____			Spec. Container Identification: _____																																						
Method: <input type="checkbox"/> A (Natural) <input type="checkbox"/> B (Remolded)		Method: <input type="checkbox"/> A (Natural) <input type="checkbox"/> B (Remolded)		Method: <input type="checkbox"/> A (Natural) <input type="checkbox"/> B (Remolded)		Method: <input type="checkbox"/> A (Natural) <input type="checkbox"/> B (Remolded)		Method: <input type="checkbox"/> A (Natural) <input type="checkbox"/> B (Remolded)		Method: <input type="checkbox"/> A (Natural) <input type="checkbox"/> B (Remolded)																																					
Water Type: <input type="checkbox"/> Distilled <input type="checkbox"/> Type IV		Water Type: <input type="checkbox"/> Distilled <input type="checkbox"/> Type IV		Water Type: <input type="checkbox"/> Distilled <input type="checkbox"/> Type IV		Water Type: <input type="checkbox"/> Distilled <input type="checkbox"/> Type IV		Water Type: <input type="checkbox"/> Distilled <input type="checkbox"/> Type IV		Water Type: <input type="checkbox"/> Distilled <input type="checkbox"/> Type IV																																					
Initial Water Temp. (°C): _____				Initial Water Temp. (°C): _____				Initial Water Temp. (°C): _____																																							
Start Time (hh:mm:ss): _____				Start Time (hh:mm:ss): _____				Start Time (hh:mm:ss): _____																																							
Target Reading	Time Taken	Grade	Temp. (°C)	Target Reading	Time Taken	Grade	Temp. (°C)	Target Reading	Time Taken	Grade	Temp. (°C)																																				
2 min ± 15 s				2 min ± 15 s				2 min ± 15 s																																							
1 h ± 8 min				1 h ± 8 min				1 h ± 8 min																																							
6 h ± 45 min				6 h ± 45 min				6 h ± 45 min																																							
Dispersive Classification: _____			Dispersive Classification: _____			Dispersive Classification: _____			Dispersive Classification: _____																																						
Additional water added to remold the specimen (Method B): <input type="checkbox"/> Y <input type="checkbox"/> N				Additional water added to remold the specimen (Method B): <input type="checkbox"/> Y <input type="checkbox"/> N				Additional water added to remold the specimen (Method B): <input type="checkbox"/> Y <input type="checkbox"/> N																																							
Remarks: _____																																															
Prepared By: _____			Tested By: _____			Input By: _____			Reviewed By: _____																																						
Date: _____			Date: _____			Date: _____			Date: _____																																						

FIG. X1.1 Example of a Crumb Test Data Sheet

CRUMB TEST (ASTM D6572)																										
Project No.: <u>0401-1320</u>			Project Name: <u>Example</u>			Location: <u>East Side Borrow</u>																				
Boring No.: <u>Pit E1</u>			Sample No.: <u>10</u>			Depth: <u>2-3.5</u> <input checked="" type="checkbox"/> ft <input type="checkbox"/> m																				
Visual Classification: <u>fat clay</u>						Color: <u>red to reddish-brown</u>																				
<table border="1" style="width: 100%; border-collapse: collapse;"> <thead> <tr> <th colspan="2">Moisture Content of Sample:</th> <th><input checked="" type="checkbox"/> as-received</th> <th><input type="checkbox"/> in situ</th> <th><input type="checkbox"/> air-dried</th> </tr> <tr> <th>Tare Number</th> <th>Wet Mass + Tare (g)</th> <th>Dry Mass + Tare (g)</th> <th>Tare Mass (g)</th> <th>Water Content (%)</th> </tr> </thead> <tbody> <tr> <td style="text-align: center;">K-33</td> <td style="text-align: center;">127.05</td> <td style="text-align: center;">103.17</td> <td style="text-align: center;">10.17</td> <td style="text-align: center;">25.7</td> </tr> </tbody> </table>												Moisture Content of Sample:		<input checked="" type="checkbox"/> as-received	<input type="checkbox"/> in situ	<input type="checkbox"/> air-dried	Tare Number	Wet Mass + Tare (g)	Dry Mass + Tare (g)	Tare Mass (g)	Water Content (%)	K-33	127.05	103.17	10.17	25.7
Moisture Content of Sample:		<input checked="" type="checkbox"/> as-received	<input type="checkbox"/> in situ	<input type="checkbox"/> air-dried																						
Tare Number	Wet Mass + Tare (g)	Dry Mass + Tare (g)	Tare Mass (g)	Water Content (%)																						
K-33	127.05	103.17	10.17	25.7																						
Specimen Identification: <u>10 #1</u>		Specimen Identification: <u>10 #2</u>		Specimen Identification: <u>10 #3</u>																						
Spec. Container Identification: <u>MEL-2</u>		Spec. Container Identification: <u>EKG-3</u>		Spec. Container Identification: <u>GPF-1</u>																						
Method: <input checked="" type="checkbox"/> A (Natural)				Method: <input checked="" type="checkbox"/> A (Natural)				Method: <input checked="" type="checkbox"/> A (Natural)																		
<input type="checkbox"/> B (Remolded)				<input type="checkbox"/> B (Remolded)				<input type="checkbox"/> B (Remolded)																		
Water Type: <input checked="" type="checkbox"/> Distilled				Water Type: <input checked="" type="checkbox"/> Distilled				Water Type: <input checked="" type="checkbox"/> Distilled																		
<input type="checkbox"/> Type IV				<input type="checkbox"/> Type IV				<input type="checkbox"/> Type IV																		
Initial Water Temp. (°C): <u>23.2</u>			Initial Water Temp. (°C): <u>22.9</u>			Initial Water Temp. (°C): <u>23.3</u>																				
Start Time (hh:mm:ss): <u>10:30:00 AM</u>			Start Time (hh:mm:ss): <u>10:35:00 AM</u>			Start Time (hh:mm:ss): <u>10:40:00 AM</u>																				
Target Reading	Time Taken	Grade	Temp. (°C)	Target Reading	Time Taken	Grade	Temp. (°C)	Target Reading	Time Taken	Grade	Temp. (°C)															
2 min ± 15 s	10:32:00	2	23.2	2 min ± 15 s	10:37:00	3	22.8	2 min ± 15 s	10:40:00	2	23.3															
1 h ± 8 min	11:31 AM	2	22.9	1 h ± 8 min	11:33 AM	4	22.7	1 h ± 8 min	11:42 AM	3	23.0															
6 h ± 45 min	4:15 PM	3	21.6	6 h ± 45 min	4:20 PM	4	22.5	6 h ± 45 min	4:25 PM	3	22.9															
Dispersive Classification: <u>Dispersive</u>		Dispersive Classification: <u>Highly dispersive</u>		Dispersive Classification: <u>Dispersive</u>																						
Additional water added to remold the specimen (Method B): <input type="checkbox"/> Y <input type="checkbox"/> N			Additional water added to remold the specimen (Method B): <input type="checkbox"/> Y <input type="checkbox"/> N			Additional water added to remold the specimen (Method B): <input type="checkbox"/> Y <input checked="" type="checkbox"/> N																				
Remarks: <u>Photographs taken at the 6 hour reading for all 3 specimens.</u>																										
Prepared By: <u>RSL</u>			Tested By: <u>GLA</u>			Input By: <u>KJH</u>			Reviewed By: <u>KSA</u>																	
Date: <u>11/15/12</u>			Date: <u>11/15/12</u>			Date: <u>11/16/12</u>			Date: <u>11/16/12</u>																	

FIG. X1.2 Example of a Completed Crumb Test Data Sheet

REFERENCES

- (1) Kinney, James L., “Laboratory Procedures for Determining the Dispersibility of Clayey Soils,” Bureau of Reclamation Report No. REC-EERC 70-10, 1979, 20 pp.
- (2) Holgren, G.C.S., and Flanagan, C. P., “Factors Affecting Spontaneous Dispersion of Soil Materials As Evidenced by the Crumb Test,” *ASTM Proceeding son Symposium on Dispersive Clays, STP 623*, Chicago, IL, 1976, pp. 218–239.
- (3) Acciardi, Raymond, “Pinhole Test Equipment Design and Test Result Evaluation,” Bureau of Reclamation, *Report No. REC-ERC-85-3*, 1985, 76 pp.
- (4) Bell, F.G., and Maud, R. R., “Dispersive Soils: A review from a South Africa Perspective,” *Quarterly Journal of Engineering Geology*, Vol 27, 1994, pp. 195–210.
- (5) Sherard, J.L., et al., “Identification and Nature of Dispersive Soils,” *Journal of Geotechnical Engineering Division*, ASCE, Vol 102, No. GT-4, 1976, pp. 287–301.
- (6) Emerson, W.W., “A Classification of Soil Aggregates Based on Their Coherence in Water,” *Australian Journal of Soil Research*, Vol 2, 1964, pp. 211–217.
- (7) Bureau of Reclamation, “Procedure for Determining Dispersibility of Clayey Soils by the Crumb Test Method,” United States Department of Interior, Part 2, 1990, pp. 414–418.

SUMMARY OF CHANGES

Committee D18 has identified the location of selected changes to this standard since the last issue (D4186 – 12) that may impact the use of this standard. (Approved Nov. 1, 2013.)

- (1) Added Section 1.
- (2) Revised units statement in 1.7 and units throughout.
- (3) Revised Section 3 to conform to D18 policy.
- (4) Rewrote Sections 9, 11, and 13.
- (5) Added Section 10 and Appendix X1.

ASTM International takes no position respecting the validity of any patent rights asserted in connection with any item mentioned in this standard. Users of this standard are expressly advised that determination of the validity of any such patent rights, and the risk of infringement of such rights, are entirely their own responsibility.

This standard is subject to revision at any time by the responsible technical committee and must be reviewed every five years and if not revised, either reapproved or withdrawn. Your comments are invited either for revision of this standard or for additional standards and should be addressed to ASTM International Headquarters. Your comments will receive careful consideration at a meeting of the responsible technical committee, which you may attend. If you feel that your comments have not received a fair hearing you should make your views known to the ASTM Committee on Standards, at the address shown below.

This standard is copyrighted by ASTM International, 100 Barr Harbor Drive, PO Box C700, West Conshohocken, PA 19428-2959, United States. Individual reprints (single or multiple copies) of this standard may be obtained by contacting ASTM at the above address or at 610-832-9585 (phone), 610-832-9555 (fax), or service@astm.org (e-mail); or through the ASTM website (www.astm.org). Permission rights to photocopy the standard may also be secured from the Copyright Clearance Center, 222 Rosewood Drive, Danvers, MA 01923, Tel: (978) 646-2600; <http://www.copyright.com/>