



Standard Test Method for Trace Benzene in Hydrocarbon Solvents by Capillary Gas Chromatography¹

This standard is issued under the fixed designation D6229; the number immediately following the designation indicates the year of original adoption or, in the case of revision, the year of last revision. A number in parentheses indicates the year of last reapproval. A superscript epsilon (ϵ) indicates an editorial change since the last revision or reapproval.

1. Scope*

1.1 This test method covers the determination by capillary gas chromatography of trace benzene in hydrocarbon solvents at levels from 1.0 to 2400 vppm.

NOTE 1—Lower levels of benzene may be determined by this test method. However the gas chromatography (GC) will have to be modified from those specified in this test method. The precision of the method may not apply to these lower benzene levels.

1.2 For hazard information and guidance, see the supplier's Material Safety Data Sheet.

1.3 The values stated in SI units are to be regarded as the statement. The values in parenthesis are given for information only and are not necessarily the exact equivalent of the SI unit values.

1.4 For purposes of determining conformance of an observed or a calculated value using this test method to relevant specifications, test result(s) shall be rounded off "to the nearest unit" in the last right-hand digit used in expressing the specification limit, in accordance with Practice E29.

1.5 *This standard does not purport to address all of the safety concerns, if any, associated with its use. It is the responsibility of the user of this standard to establish appropriate safety and health practices and determine the applicability of regulatory limitations prior to use.*

2. Referenced Documents

2.1 ASTM Standards:²

- D4367 Test Method for Benzene in Hydrocarbon Solvents by Gas Chromatography
- E29 Practice for Using Significant Digits in Test Data to Determine Conformance with Specifications
- E300 Practice for Sampling Industrial Chemicals

¹ This test method is under the jurisdiction of ASTM Committee D01 on Paint and Related Coatings, Materials, and Applications and is the direct responsibility of Subcommittee D01.35 on Solvents, Plasticizers, and Chemical Intermediates

Current edition approved Dec. 1, 2010. Published December 2010. Originally approved in 1998. Last previous edition approved in 2006 as D6229 – 06. DOI: 10.1520/D6229-06R10.

² For referenced ASTM standards, visit the ASTM website, www.astm.org, or contact ASTM Customer Service at service@astm.org. For *Annual Book of ASTM Standards* volume information, refer to the standard's Document Summary page on the ASTM website.

2.2 ASTM Adjuncts:

D2PP Determination of Precision and Bias Data³

3. Summary of Test Method

3.1 A given volume of the sample is introduced into a gas chromatograph equipped with two capillary columns connected in series by switching valve. The specimen passes first through a short capillary column with a bounded nonpolar phase where the components are separated by boiling point. After octane has eluted from the first column, the components heavier than octane are back-flushed to vent. The octane and lighter components then pass through a second capillary column with bounded polar phase where the aromatic and nonaromatic components are separated. The eluted components are detected by a flame ionization detector, and the peak areas are integrated electronically. The concentration of benzene is calculated by a data processor using a response factor determined by external standard technique.

4. Significance and Use

4.1 This test method is similar to Test Method D4367 with the exception that capillary columns are used and intended for trace level of benzene in hydrocarbon solvents. The need for trace benzene analysis in hydrocarbon solvents arose because of the increase of more stringent regulation of benzene level in these materials.

5. Apparatus

5.1 *Chromatograph*—Any gas chromatographic instrument that has a backflush system operated by a switching valve automatically, flame ionization detector, and can be operated at the conditions given in Table 1.

5.2 *Detector*—The flame ionization detector shall have sufficient sensitivity to detect 0.1 vppm of benzene at a peak height of 3 times the noise level.

5.3 *Columns*—one 2-m (6.5-ft), 0.53 mm inside diameter fused silica capillary with 5- μ m thick bounded methyl silicone

³ Available from ASTM International Headquarters. Order Adjunct No. ADJD6300.

*A Summary of Changes section appears at the end of this standard

TABLE 1 Instrument Conditions Found Satisfactory for Measuring Trace Concentrations of Benzene in Hydrocarbon Solvents

GC Parameter	Values
Detector	Flame ionization detector (FID)
Columns:	
Length, m	(A) 2; (B) 30
Inside diameter, mm	(A) 0.53; (B) 0.53
Liquid phase, bonded	(A) methyl silicone; (B) polyethylene glycol
Liquid phase thickness	(A) 5 μm ; (B) 0.5 μm
Switching valve temperature	150°C (302°F)
Temperature programme:	
Initial temperature	40°C (104°F)
Initial time hold	8 min
Ramp rate	20°C (68°F)/min
Final temperature	200°C (392°F)
Final time hold	5 min
Sample size	1 μL
Split ratio	1:10
Column flow (He carrier gas)	5.0 mL/min
Backflush to vent activation time	3.0 min

column and one 30-m (98.5-ft), 0.53-mm inside diameter fused silica capillary with 0.5- μm thick bounded polyethylene glycol column.

5.4 Switching Valve—A 6-port switching valve 175°C (347 °F) maximum temperature, housed in a separate, temperature-controlled oven, that can be activated automatically by the gas chromatograph.

5.5 Sample Inlet System—The sample inlet system shall be capable of split injection typically at a 1:10 split ratio.

NOTE 2—An auto injector was used in the generation of the repeatability value of this test method, and is recommended. Manual injection with a syringe is acceptable; however, the observed precision may not apply.

5.6 Data Acquisition System:

5.6.1 Recorder—A 0 to 1 mv range recorder or equivalent, with a full-scale response time of 2 s shall be used.

5.6.2 Integrator—Means shall be provided for determining the area of the benzene peak. This can be done by means of an electronic integrator or a computer based chromatography data system. The integrator/computer system shall have standard chromatographic software for determining the retention times and areas of eluting peaks.

5.7 Microsyringe—5 μL capacity.

5.8 Pipets—measuring 1 and 2 mL, graduated in 0.01 mL: 5, 10, and 20 mL capacity.

5.9 Pipets—delivery 0.5, 1, 2, 5, 10, 25 mL capacity.

5.10 Flasks—volumetric, 25, 50, 100, and 500 mL capacity.

6. Reagents

6.1 Purity of Reagents—All reagents shall be reagent grade chemicals with a minimum purity of 99 + mol %.

6.1.1 *Benzene*.

6.1.2 *n-Hexane*, benzene-free.

6.1.3 *n-Octane*, benzene-free.

6.1.4 *n-Nonane*, benzene-free.

7. Sampling

7.1 Take samples of solvents to be analyzed by this test method using the procedures described in Practice E300.

8. Preparation and Conditioning of Capillary Columns

8.1 Both columns prescribed by this procedure shall be obtained ready to use from reputable chromatographic suppliers.

8.2 Columns shall be conditioned following column supplier recommended procedures before use.

9. Preparation of Gas Chromatograph

9.1 Connect columns A and B to the 6-port switching valve by referring to Fig. 1.

9.1.1 Adjust the operating conditions to those listed in Table 1, but do not turn on the detector. Check the system for leaks.

9.2 Adjust the column flow rate as follows:

9.2.1 Set the switching valve in the *forward flow* mode (Fig. 2 (a)) and adjust the flow controller to give the required column flow rate.

9.2.2 Set the switching valve in the *backflush* mode (Fig. 2 (b)) and check that the column flow is as required.

9.2.3 Turn on the detector. Change the switching from the *forward flow* to the *backflush* mode several times and observe the baseline. There shall be no baseline shift resulting from the pressure surge when the switching valves are changed. (A persistent drift indicates leaks somewhere in the system).

9.3 Determine the backflush activation time. The backflush activation time varies for each column system and shall be determined experimentally as follows:

9.3.1 Prepare a solution of 0.1 v % *n*-octane and 0.1 v % *n*-nonane in benzene-free *n*-hexane. With the system in the *forward flow* mode, introduce 1 μL of the *n*-octane/*n*-nonane in *n*-hexane mixture. Allow the chromatogram to run until the *n*-nonane has eluted from the second column and the chromatographic trace has returned to baseline. Measure the time in minutes from the injection until the signal goes back to baseline after the *n*-octane peak. At this point all of the *n*-octane but essentially none of the *n*-nonane shall have eluted. One half of the measured time approximates the time to backflush (see 9.3.3).

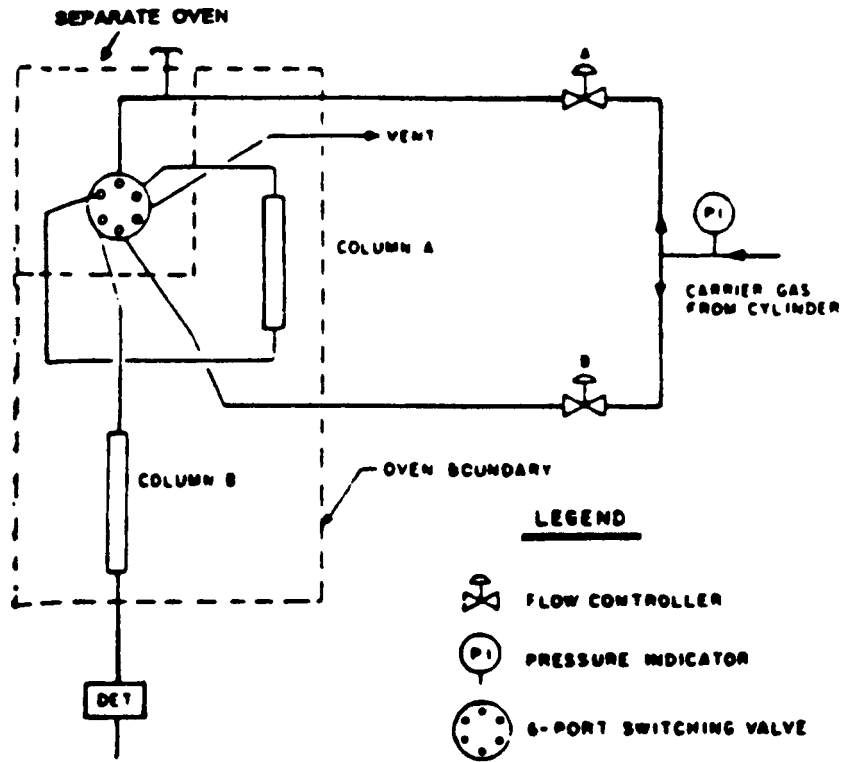
NOTE 3—Some minor adjustment of the backflush activation time may be necessary for some samples.

9.3.2 Repeat the run, including the injection of the *n*-octane/*n*-nonane in a *n*-hexane mixture, but switching the system to the *backflush* mode at the determined backflush activation time. This should result in a chromatogram showing only *n*-hexane and *n*-octane, with little or no *n*-nonane evident.

9.3.3 If necessary, make additional runs, adjusting the backflush activation time until a chromatogram of all the *n*-octane (evidenced by a repeatable and constant area count) and little or none of the *n*-nonane is obtained. The established backflush activation time for a particular type of sample shall be used in all subsequent calibration and analysis.

10. Calibration and Standardization

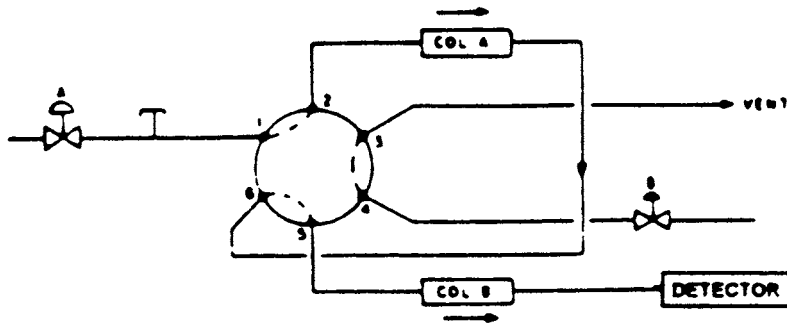
10.1 5000 vppm Stock Solution—Prepare a 5000-vppm benzene in *n*-hexane stock solution by accurately delivering 0.50 mL of 99+ % purity benzene into a 100-mL volumetric flask by means of a delivery pipet. Dilute to the mark with *n*-hexane.



T INJECTION PORT

FIG. 1 Columns Connections to Switching Valve

(a) Forward Flow



(b) Backflush

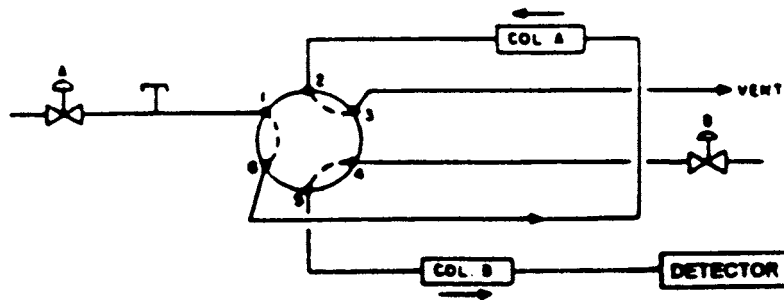


FIG. 2 Flow Switching System

This stock solution can be used to prepare various levels of benzene in *n*-hexane by accurately diluting the required volume of this solution with *n*-hexane in a volumetric flask.

10.2 Calibration Standard Solution—Prepare a 10.0 vppm benzene in *n*-hexane calibration standard solution by accurately delivering 1.0 mL of the 5000 vppm stock solution into a 500-mL volumetric flask. Dilute to the mark with *n*-hexane. This calibration standard can be used to calibrate the procedure by external standard technique.

10.3 Calibration—If the system has not been used for at least 12 h, condition the system by running the GC method once without injecting any sample. After conditioning, introduce 1 µL of the 10 vppm benzene in *n*-hexane calibration standard by the recommended injection technique and allow the run to be completed. Determine the response factor for the benzene peak by means of the integrator/data system. The response factor can also be calculated manually by using the following equation:

$$R_f = C_b/A_b \quad (1)$$

where:

R_f = the response factor for benzene in vppm per unit area,
 C_b = the concentration of benzene in the calibration standard in vppm, and
 A_b = the area of the benzene peak in the calibration standard.

10.4 Adjust the detector sensitivity in such a way that 3 times the noise level is equivalent to a benzene concentration of at least 0.1 vppm.

NOTE 4—The repeatability reported for this test method was determined from data generated by a single point, external standard calibration with a 10 vppm benzene in *n*-hexane standard solution. If so desired, multipoint calibration can be done by preparing various levels of benzene in *n*-hexane and the data can be used to generate a calibration curve.

NOTE 5—Linearity of the benzene response has been confirmed from 1 vppm to 2400 vppm.

11. Procedure

11.1 If the system has not been used for at least 12 h, condition the system by running the GC method once without injecting any sample. After conditioning, introduce 1 µL of the 0.1 v % *n*-octane and 0.1 v % *n*-nonane in *n*-hexane mixture (9.3.1) or any sample that requires analysis of trace level benzene. Identify the retention time for benzene in the chromatogram, and determine the area of the benzene peak using an electronic integrator/data system. A typical chromatogram of a sample containing non-aromatics, benzene, and toluene is shown in Fig. 3.

TABLE 2 Calculated Precision for Various Benzene Level

Benzene (vppm)	Repeatability (r)	Reproducibility (R)
5	0.4	1.5
10	0.5	2.1
20	0.8	3.3
50	1.8	7.7
100	3.9	16.6
200	9.0	38.2
500	28.6	121.8

12. Calculation

12.1 Using the software of the data system and the response factor obtained in 10.3 calculate the benzene concentration (in vppm) in the sample corresponding to the peak area determined in 11.1. Manual calculation can be done by using the following equation:

$$C_x = R_f \times A_x \quad (2)$$

where:

C_x = the benzene concentration in the sample in vppm,
 R_f = the response factor determined in 10.3, and
 A_x = the area of the benzene peak in the sample.

12.2 If the results are desired on a weight basis, convert vppm to wppm as follows:

$$\text{Benzene, wppm} = (C_x/D) \times 0.8844 \quad (3)$$

where:

C_x = the benzene concentration in the sample in vppm,
 D = the relative density of the sample at 15.6/15.6°C (60/60°F), and
 0.8844 = the relative density of benzene at 15.6/15.6°C (60/60°F).

13. Report

13.1 Report the concentration of benzene in the sample to the nearest 0.1 vppm. or 0.1 wppm.

14. Precision and Bias⁴

14.1 Precision—The following criteria should be used to judge the acceptability (95 % confidence level) of the results obtained by this test method. The criteria were derived from an interlaboratory study involving six samples having benzene levels from 1 to >500 vppm, run in duplicate in three laboratories. The data were statistically evaluated by the D2PP software³ used by D02 Committee.

14.1.1 Repeatability—The repeatability of this test method is dependent on the benzene level, and is given by the equation:

$$\text{Repeatability } (r) = 0.0076(X + 13.30)^{1.32} \text{ vppm} \quad (4)$$

where X is the benzene level.

14.1.2 Reproducibility—The reproducibility of this test method is dependent on the benzene level, and is given by the equation:

$$\text{Reproducibility } (R) = 0.032(X + 13.30)^{1.32} \text{ vppm} \quad (5)$$

where X is the benzene level.

14.2 Table 2 gives examples of calculated repeatability and reproducibility for various levels of benzene, using Eq 4 and Eq 5.

14.3 Bias—Bias cannot be determined for this test method because there is no available material having an accepted reference value.

⁴ Supporting data have been filed at ASTM International Headquarters and may be obtained by requesting Research Report RR:D01-1122.

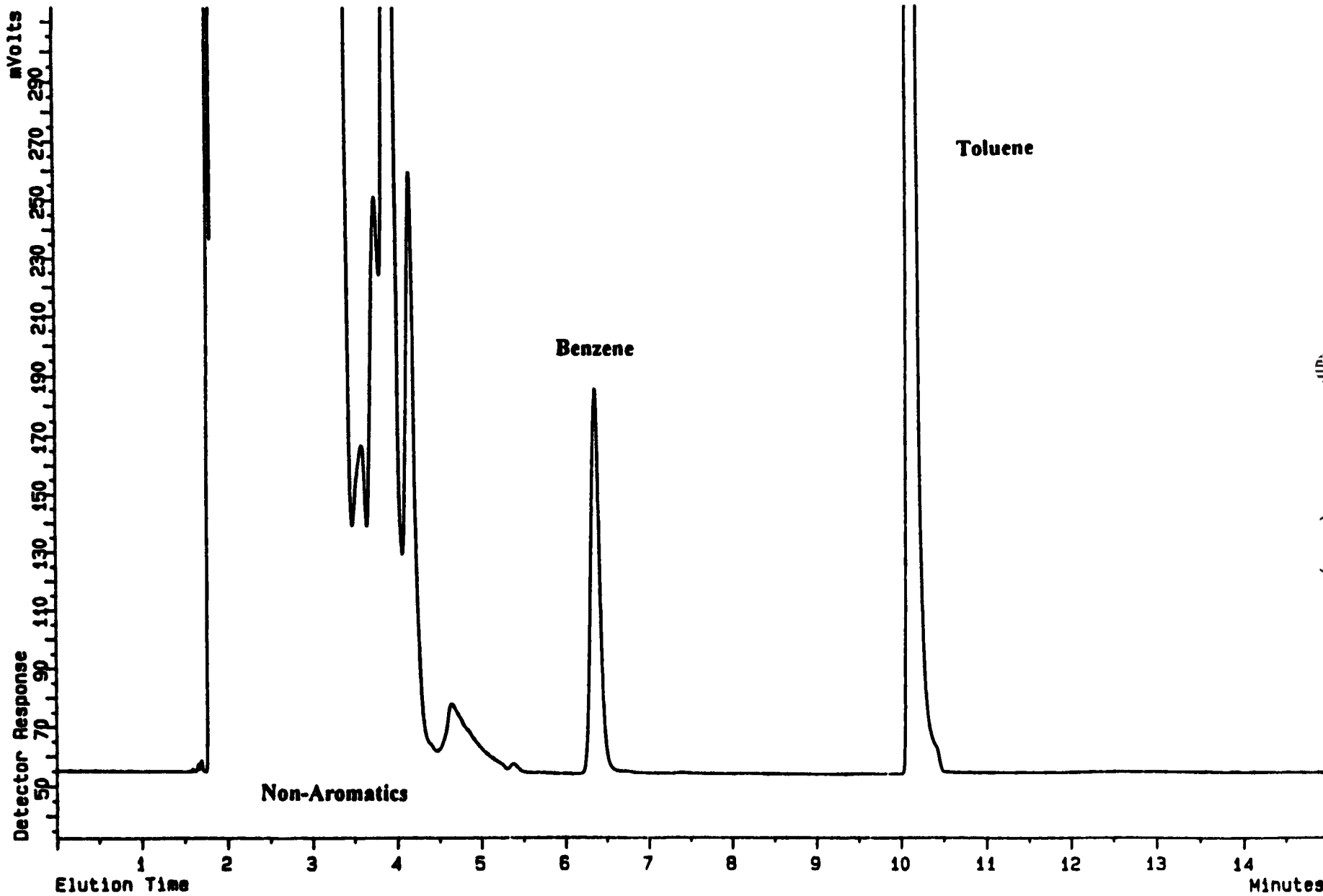


FIG. 3 Typical Chromatogram



15. Keywords

15.1 benzene content; capillary GC; gas chromatography;
hydrocarbon solvents

SUMMARY OF CHANGES

Committee D01.35 has identified the location of selected changes to this standard since the last issue (D6229 – 01) that may impact the use of this standard. (Approved April 1, 2006.)

- (1) Added reference to Practice **E29** in the scope section. (2) Added Practice **E29** to list of Referenced Standards.

ASTM International takes no position respecting the validity of any patent rights asserted in connection with any item mentioned in this standard. Users of this standard are expressly advised that determination of the validity of any such patent rights, and the risk of infringement of such rights, are entirely their own responsibility.

This standard is subject to revision at any time by the responsible technical committee and must be reviewed every five years and if not revised, either reapproved or withdrawn. Your comments are invited either for revision of this standard or for additional standards and should be addressed to ASTM International Headquarters. Your comments will receive careful consideration at a meeting of the responsible technical committee, which you may attend. If you feel that your comments have not received a fair hearing you should make your views known to the ASTM Committee on Standards, at the address shown below.

This standard is copyrighted by ASTM International, 100 Barr Harbor Drive, PO Box C700, West Conshohocken, PA 19428-2959, United States. Individual reprints (single or multiple copies) of this standard may be obtained by contacting ASTM at the above address or at 610-832-9585 (phone), 610-832-9555 (fax), or service@astm.org (e-mail); or through the ASTM website (www.astm.org). Permission rights to photocopy the standard may also be secured from the ASTM website (www.astm.org/COPYRIGHT).